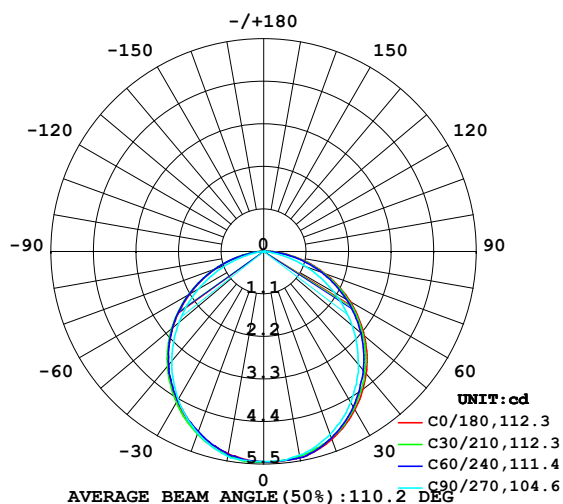


LUMINAIRE PHOTOMETRIC TEST REPORT

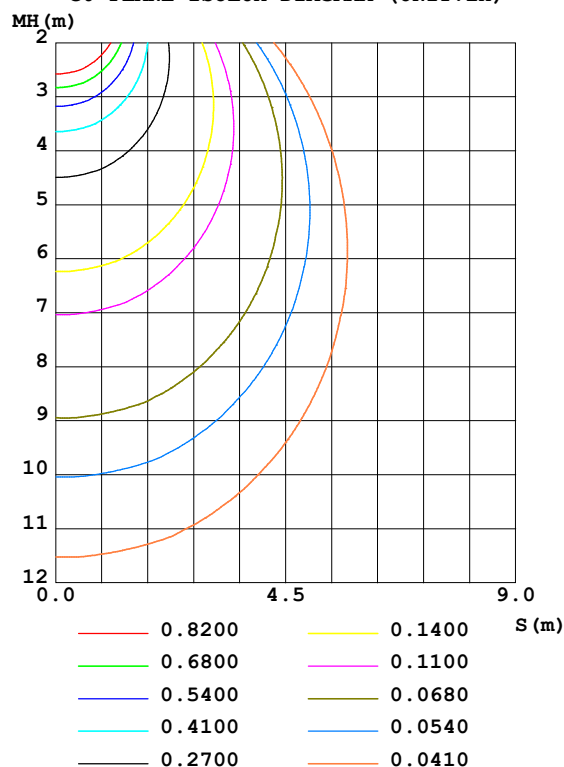
Test:U:24.00V I:0.1909A P:4.582W PF:1.000 Freq:50.00Hz Lamp Flux:15.3136x1 lm		
NAME: SF15-24V-5050-56-DMX4SM-RGBW(4000)-B	TYPE: 硅胶	WEIGHT:
SPEC.:	DIM.: 21mm*11.5mm	SERIAL No.:2021123018
MFR.: OLYMPIA	SUR.:1*0.0115	Shielding Angle:

DATA OF LAMP		PHOTOMETRIC DATA				Eff: 3.34 lm/W
MODEL	5050	I _{max} (cd)	5.468	S/MH(C0/180)	1.23	
NOMINAL POWER(W)	3.75	LOR(%)	100.0	S/MH(C90/270)	1.21	
RATED VOLTAGE(V)	24	TOTAL FLUX(lm)	15.314	η UP,DN(C0-180)	0.3,50.8	
NOMINAL FLUX(lm)	15.3136	CIE CLASS	DIRECT	η UP,DN(C180-360)	0.0,48.9	
LAMPS INSIDE	1	η up(%)	0.3	CIBSE SHR NOM	1.25	
TEST VOLTAGE(V)	24	η down(%)	99.7	CIBSE SHR MAX	1.35	

LUMINOUS INTENSITY DISTRIBUTION DIAGRAM



C0 PLANE ISOLUX DIAGRAM (UNIT:lx)



C Range: 0 - 360DEG
 C Interval: 30.0DEG
 Test Speed: HIGH
 Temperature: 25.3DEG
 Operators: LPC
 Test Date: 2021-12-30

γ Range: 0 - 120DEG
 γ Interval: 1.0DEG
 Test System: EVERFINE GO-2000B_V1 SYSTEM V2.0.362
 Humidity: 65.0%
 Test Distance: 9.200m [K=1.0000]
 Remarks:

ZONAL FLUX DIAGRAM

ZONAL FLUX DIAGRAM:

γ	C0	C45	C90	C135	C180	C225	C270	C315	γ	Φ zone	Φ total	%lum, lamp
10	5.418	5.394	5.347	5.342	5.307	5.345	5.378	5.395	0- 10	0.5164	0.5164	3.37,3.37
20	5.172	5.129	5.030	5.026	4.975	4.988	4.996	5.078	10- 20	1.477	1.993	13,13
30	4.725	4.661	4.508	4.538	4.477	4.486	4.418	4.586	20- 30	2.222	4.215	27.5,27.5
40	4.127	4.041	3.809	3.895	3.834	3.852	3.700	3.998	30- 40	2.659	6.874	44.9,44.9
50	3.398	3.317	2.999	3.114	3.080	3.096	2.866	3.279	40- 50	2.742	9.615	62.8,62.8
60	2.579	2.500	2.095	2.272	2.210	2.241	1.956	2.470	50- 60	2.457	12.07	78.8,78.8
70	1.695	1.623	1.165	1.385	1.321	1.349	1.051	1.598	60- 70	1.854	13.93	90.9,90.9
80	0.8301	0.7564	0.2908	0.5328	0.4919	0.4975	0.2117	0.7362	70- 80	1.048	14.97	97.8,97.8
90	0.1964	0.1081	0.0050	0.0528	0.0449	0.0303	0	0.0980	80- 90	0.2921	15.27	99.7,99.7
100	0.0101	0.0226	0.0101	0.0352	0	0.0025	0	0	90-100	0.0282	15.29	99.9,99.9
110	0.0101	0.0176	0.0101	0.0251	0	0	0	0	100-110	0.0104	15.30	99.9,99.9
120	0.0050	0.0151	0.0101	0.0226	0	0	0	0	110-120	0.0085	15.31	100,100
130	0	0	0	0	0	0	0	0	120-130	0.0004	15.31	100,100
140	0	0	0	0	0	0	0	0	130-140	0	15.31	100,100
150	0	0	0	0	0	0	0	0	140-150	0	15.31	100,100
160	0	0	0	0	0	0	0	0	150-160	0	15.31	100,100
170	0	0	0	0	0	0	0	0	160-170	0	15.31	100,100
180	0	0	0	0	0	0	0	0	170-180	0	15.31	100,100
DEG	LUMINOUS INTENSITY:cd									UNIT:lm		

Conical surface Flux(90deg): 8.2577 lm

%lum = 53.9%

%lamp = 53.9%

Conical surface Flux(120deg): 12.072 lm

%lum = 78.8%

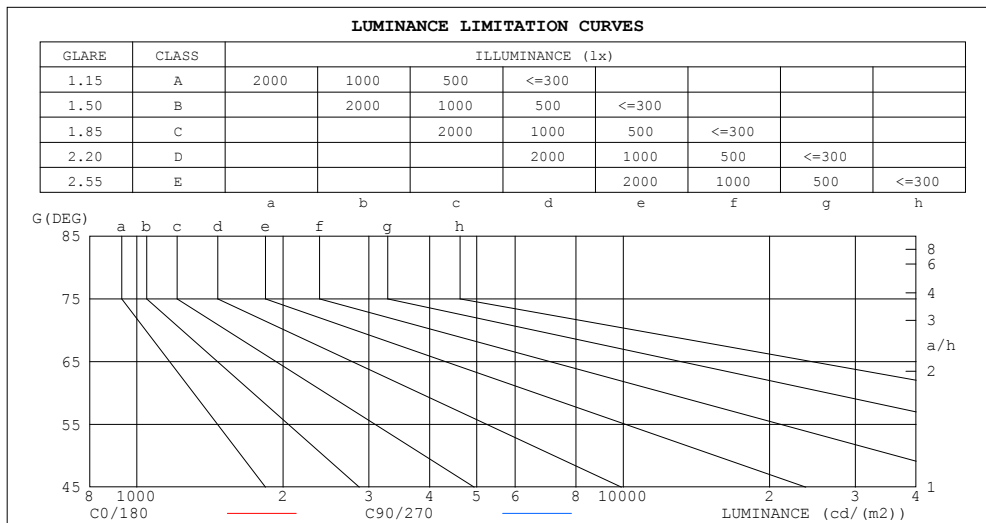
%lamp = 78.8%

C Range: 0 - 360DEG
 C Interval: 30.0DEG
 Test Speed: HIGH
 Temperature:25.3DEG
 Operators:LPC
 Test Date:2021-12-30

γ Range: 0 - 120DEG
 γ Interval: 1.0DEG
 Test System:EVERFINE GO-2000B_V1 SYSTEM V2.0.362
 Humidity:65.0%
 Test Distance:9.200m [K=1.0000]
 Remarks:

LUMINANCE LIMITATION CURVES

Test:U:24.00V I:0.1909A P:4.582W PF:1.000 Freq:50.00Hz Lamp Flux:15.3136x1 lm		
NAME: SF15-24V-5050-56-DMX4SM-RGBW(4000)-B	TYPE: 硅胶	WEIGHT:
SPEC.:	DIM.: 21mm*11.5mm	SERIAL No.:2021123018
MFR.: OLYMPIA	SUR.:1*0.0115	Shielding Angle:



LUMINANCE cd/(m2)		
G (DEG)	C0/180	C90/270
85	447	10
80	416	146
75	424	243
70	431	296
65	441	339
60	449	364
55	454	385
50	460	406
45	465	419

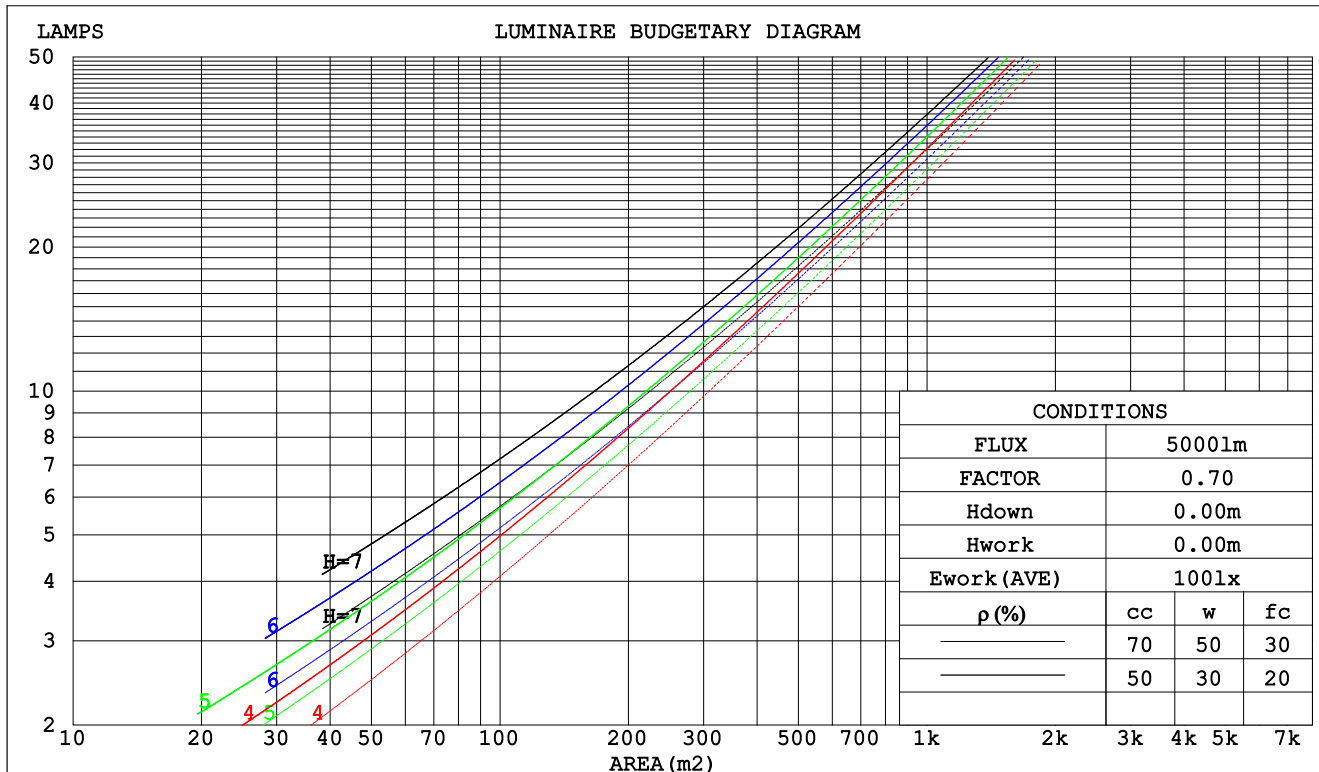
C Range: 0 - 360DEG
C Interval: 30.0DEG
Test Speed: HIGH
Temperature:25.3DEG
Operators:LPC
Test Date:2021-12-30

γ Range: 0 - 120DEG
 γ Interval: 1.0DEG
Test System:EVERFINE GO-2000B_V1 SYSTEM V2.0.362
Humidity:65.0%
Test Distance:9.200m [K=1.0000]
Remarks:

CU AND LUMINAIRE BUDGETARY ESTIMATE DIAGRAM

Test:U:24.00V I:0.1909A P:4.582W PF:1.000 Freq:50.00Hz Lamp Flux:15.3136x1 lm		
NAME: SF15-24V-5050-56-DMX4SM-RGBW(4000)-B	TYPE: 硅胶	WEIGHT:
SPEC.:	DIM.: 21mm*11.5mm	SERIAL No.:2021123018
MFR.: OLYMPIA	SUR.:1*0.0115	Shielding Angle:

pcc	80%			70%			50%			30%			10%			0
pw	50%	30%	10%	50%	30%	10%	50%	30%	10%	50%	30%	10%	50%	30%	10%	0
pfc	20%			20%			20%			20%			20%			0
RCR	Coefficients of Utilization(CU)															
0.0	1.19	1.19	1.19	1.16	1.16	1.16	1.11	1.11	1.11	1.06	1.06	1.06	1.02	1.02	1.02	.00
1.0	1.04	.00	.96	1.02	.98	.94	.97	.94	.91	.93	.91	.88	.90	.88	.86	.83
2.0	.91	.84	.78	.89	.82	.77	.85	.80	.75	.82	.77	.73	.79	.75	.72	.69
3.0	.79	.71	.65	.78	.70	.64	.75	.68	.63	.72	.66	.62	.69	.65	.61	.59
4.0	.70	.62	.55	.69	.61	.54	.66	.59	.54	.64	.58	.53	.62	.57	.52	.50
5.0	.63	.54	.47	.62	.53	.47	.60	.52	.46	.58	.51	.46	.56	.50	.45	.43
6.0	.57	.48	.41	.56	.47	.41	.54	.46	.41	.52	.45	.40	.50	.45	.40	.38
7.0	.51	.43	.36	.51	.42	.36	.49	.41	.36	.47	.41	.36	.46	.40	.35	.33
8.0	.47	.38	.32	.46	.38	.32	.45	.37	.32	.44	.37	.32	.42	.36	.32	.30
9.0	.43	.35	.29	.42	.35	.29	.41	.34	.29	.40	.34	.29	.39	.33	.29	.27
10.0	.40	.32	.26	.39	.32	.26	.38	.31	.26	.37	.31	.26	.36	.30	.26	.24



C Range: 0 - 360DEG
 C Interval: 30.0DEG
 Test Speed: HIGH
 Temperature:25.3DEG
 Operators:LPC
 Test Date:2021-12-30

γ Range: 0 - 120DEG
 γ Interval: 1.0DEG
 Test System:EVERFINE GO-2000B_V1 SYSTEM V2.0.362
 Humidity:65.0%
 Test Distance:9.200m [K=1.0000]
 Remarks:

WEC AND CCEC

Test:U:24.00V I:0.1909A P:4.582W PF:1.000 Freq:50.00Hz Lamp Flux:15.3136x1 lm		
NAME: SF15-24V-5050-56-DMX4SM-RGBW(4000)-B	TYPE: 硅胶	WEIGHT:
SPEC.:	DIM.: 21mm*11.5mm	SERIAL No.:2021123018
MFR.: OLYMPIA	SUR.:1*0.0115	Shielding Angle:

pcc	80%			70%			50%			30%			10%			0	
pw	50%	30%	10%	50%	30%	10%	50%	30%	10%	50%	30%	10%	50%	30%	10%	0	
pfc	20%			20%			20%			20%			20%			0	
RCR	RCR:Room Cavity Ratio						Wall Exitance Coefficients(WEC)										
0.0																	
1.0	.308	.175	.056	.301	.172	.055	.288	.165	.053	.276	.159	.051	.264	.153	.049		
2.0	.290	.159	.049	.284	.156	.048	.272	.151	.047	.261	.147	.046	.251	.142	.045		
3.0	.269	.143	.043	.263	.141	.042	.253	.137	.042	.243	.133	.041	.234	.130	.040		
4.0	.248	.129	.038	.243	.127	.038	.234	.124	.037	.225	.121	.036	.217	.118	.036		
5.0	.229	.117	.034	.225	.116	.034	.217	.113	.033	.209	.110	.033	.202	.108	.032		
6.0	.213	.107	.031	.209	.106	.030	.202	.103	.030	.195	.101	.030	.188	.099	.029		
7.0	.198	.098	.028	.195	.097	.028	.188	.095	.027	.182	.093	.027	.176	.092	.027		
8.0	.185	.090	.025	.182	.090	.025	.176	.088	.025	.171	.086	.025	.165	.085	.025		
9.0	.174	.084	.023	.171	.083	.023	.165	.082	.023	.160	.080	.023	.156	.079	.023		
10.0	.163	.078	.022	.161	.078	.022	.156	.076	.022	.151	.075	.021	.147	.074	.021		

pcc	80%			70%			50%			30%			10%			0
pw	50%	30%	10%	50%	30%	10%	50%	30%	10%	50%	30%	10%	50%	30%	10%	0
pfc	20%			20%			20%			20%			20%			0
RCR	RCR:Room Cavity Ratio						Ceiling Cavity Exitance Coefficients(CCEC)									
0.0	.193	.193	.193	.165	.165	.165	.112	.112	.112	.065	.065	.065	.021	.021	.021	
1.0	.183	.159	.137	.156	.136	.118	.107	.094	.081	.062	.054	.047	.020	.017	.015	
2.0	.174	.134	.101	.149	.116	.087	.102	.080	.061	.059	.047	.036	.019	.015	.012	
3.0	.167	.117	.077	.143	.101	.067	.098	.070	.047	.057	.041	.028	.018	.013	.009	
4.0	.159	.103	.061	.136	.089	.053	.094	.062	.037	.054	.036	.022	.017	.012	.007	
5.0	.152	.093	.050	.130	.080	.043	.090	.056	.031	.052	.033	.018	.017	.011	.006	
6.0	.144	.085	.042	.124	.073	.036	.086	.051	.026	.050	.030	.015	.016	.010	.005	
7.0	.138	.078	.036	.118	.067	.031	.082	.047	.022	.048	.028	.013	.015	.009	.004	
8.0	.131	.072	.031	.113	.062	.027	.078	.044	.019	.045	.026	.012	.015	.008	.004	
9.0	.125	.067	.028	.108	.058	.024	.075	.041	.017	.043	.024	.010	.014	.008	.003	
10.0	.119	.063	.025	.103	.054	.022	.071	.038	.015	.042	.023	.009	.014	.007	.003	

C Range: 0 - 360DEG
C Interval: 30.0DEG
Test Speed: HIGH
Temperature:25.3DEG
Operators:LPC
Test Date:2021-12-30

γ Range: 0 - 120DEG
γ Interval: 1.0DEG
Test System:EVERFINE GO-2000B_V1 SYSTEM V2.0.362
Humidity:65.0%
Test Distance:9.200m [K=1.0000]
Remarks:

UGR(Unified Glare Rating) Table

Test:U:24.00V I:0.1909A P:4.582W PF:1.000 Freq:50.00Hz Lamp Flux:15.3136x1 lm											
NAME: SF15-24V-5050-56-DMX4SM-RGBW(4000)-B						TYPE:硅胶		WEIGHT:			
SPEC.:						DIM.: 21mm*11.5mm		SERIAL No.:2021123018			
MFR.: OLYMPIA						SUR.:1*0.0115		Shielding Angle:			
ceiling/cavity	0.7	0.7	0.5	0.5	0.3	0.7	0.7	0.5	0.5	0.3	
walls	0.5	0.3	0.5	0.3	0.3	0.5	0.3	0.5	0.3	0.3	
working plane	0.2	0.2	0.2	0.2	0.2	0.2	0.2	0.2	0.2	0.2	
Room dimensions	Viewed crosswise					Viewed endwise					
x = 2H y = 2H	24.9	26.4	25.2	26.6	26.8	24.3	25.8	24.6	26.0	26.2	
	26.6	28.0	26.9	28.2	28.4	25.6	27.0	25.9	27.3	27.5	
	27.3	28.6	27.6	28.9	29.1	26.1	27.4	26.4	27.7	27.9	
	27.9	29.1	28.2	29.4	29.7	26.3	27.5	26.6	27.8	28.1	
	28.1	29.3	28.4	29.6	29.9	26.3	27.5	26.6	27.8	28.1	
	28.3	29.4	28.6	29.7	30.0	26.2	27.4	26.6	27.7	28.0	
4H	2H	25.5	26.8	25.8	27.1	27.3	25.1	26.4	25.4	26.6	26.9
	3H	27.4	28.5	27.7	28.8	29.1	26.7	27.8	27.0	28.1	28.4
	4H	28.2	29.3	28.6	29.6	30.0	27.3	28.3	27.6	28.7	29.0
	6H	29.0	29.9	29.4	30.3	30.6	27.6	28.5	28.0	28.9	29.3
	8H	29.2	30.1	29.7	30.5	30.9	27.6	28.5	28.1	28.9	29.3
	12H	29.5	30.3	29.9	30.7	31.1	27.6	28.4	28.1	28.8	29.2
8H	4H	28.5	29.4	28.9	29.8	30.2	27.7	28.6	28.1	28.9	29.3
	6H	29.4	30.2	29.9	30.6	31.0	28.2	29.0	28.7	29.4	29.8
	8H	29.8	30.5	30.3	30.9	31.3	28.4	29.0	28.9	29.5	29.9
	12H	30.2	30.7	30.6	31.2	31.7	28.4	29.0	28.9	29.5	29.9
12H	4H	28.5	29.3	29.0	29.7	30.1	27.7	28.5	28.2	28.9	29.3
	6H	29.5	30.1	29.9	30.6	31.0	28.4	29.0	28.8	29.4	29.9
	8H	29.9	30.5	30.4	30.9	31.4	28.6	29.1	29.1	29.6	30.1
Variations with the observer position at spacings:											
S = 1.0H	+ 0.1 / - 0.2					+ 0.2 / - 0.2					
1.5H	+ 0.2 / - 0.3					+ 0.3 / - 0.4					
2.0H	+ 0.1 / - 0.3					+ 0.2 / - 0.5					

CIE Pub.117, 15.31 lm Total Lamp Luminous Flux Correct (8log(F/F0) = -14.5)

C Range: 0 - 360DEG
C Interval: 30.0DEG
Test Speed: HIGH
Temperature:25.3DEG
Operators:LPC
Test Date:2021-12-30

γ Range: 0 - 120DEG
γ Interval: 1.0DEG
Test System:EVERFINE GO-2000B_V1 SYSTEM V2.0.362
Humidity:65.0%
Test Distance:9.200m [K=1.0000]
Remarks:

UTILIZATION FACTORS TABLE

Test:U:24.00V I:0.1909A P:4.582W PF:1.000 Freq:50.00Hz Lamp Flux:15.3136x1 lm		
NAME: SF15-24V-5050-56-DMX4SM-RGBW(4000)-B	TYPE: 硅胶	WEIGHT:
SPEC.:	DIM.: 21mm*11.5mm	SERIAL No.:2021123018
MFR.: OLYMPIA	SUR.:1*0.0115	Shielding Angle:

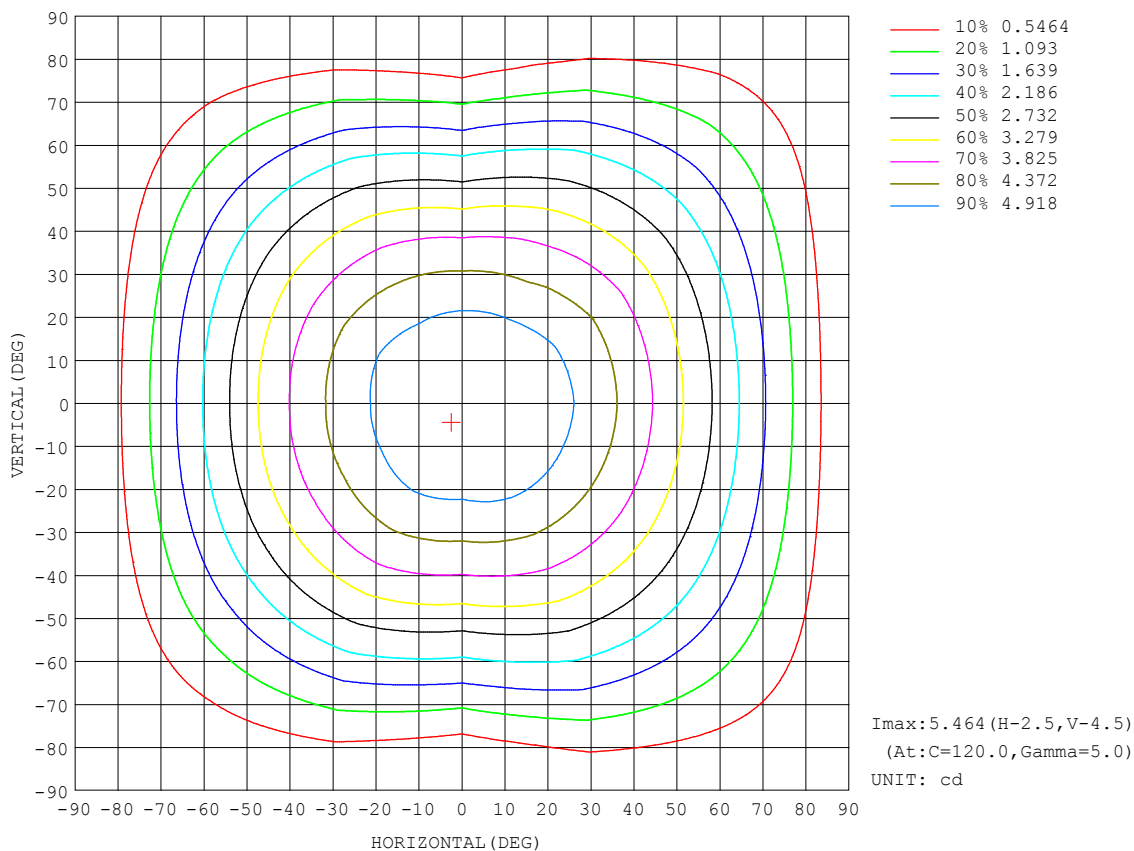
REFLECTANCE										
Ceiling	0.8	0.8	0.8	0.7	0.7	0.7	0.5	0.5	0.5	0
Walls	0.7	0.5	0.3	0.7	0.5	0.3	0.7	0.5	0.3	0
Working plane	0.2	0.2	0.2	0.2	0.2	0.2	0.2	0.2	0.2	0
ROOM INDEX	UTILIZATION FACTORS (PERCENT) $k(RI) \times RCR = 5$									
$k = 0.60$	58	46	39	57	46	39	56	45	39	32
0.80	68	56	49	67	56	49	65	55	48	41
1.00	76	65	58	75	64	57	73	66	57	50
1.25	83	73	66	82	72	65	79	71	64	57
1.50	88	78	71	86	77	71	83	76	70	62
2.00	95	86	80	93	85	79	90	83	78	70
2.50	99	91	85	97	90	84	93	87	82	74
3.00	102	95	90	100	94	89	96	91	87	78
4.00	106	101	96	104	99	94	100	95	92	83
5.00	109	104	100	106	102	98	102	98	95	86
ROOM INDEX	UF(total)									Direct
According to DIN EN 13032-2 2004			Suspended					SHRNM = 1.25		

C Range: 0 - 360DEG
 C Interval: 30.0DEG
 Test Speed: HIGH
 Temperature:25.3DEG
 Operators:LPC
 Test Date:2021-12-30

γ Range: 0 - 120DEG
 γ Interval: 1.0DEG
 Test System:EVERFINE GO-2000B_V1 SYSTEM V2.0.362
 Humidity:65.0%
 Test Distance:9.200m [K=1.0000]
 Remarks:

ISOCANDELA DIAGRAM

Test:U:24.00V I:0.1909A P:4.582W PF:1.000 Freq:50.00Hz Lamp Flux:15.3136x1 lm		
NAME: SF15-24V-5050-56-DMX4SM-RGBW(4000)-B	TYPE: 硅胶	WEIGHT:
SPEC.:	DIM.: 21mm*11.5mm	SERIAL No.:2021123018
MFR.: OLYMPIA	SUR.:1*0.0115	Shielding Angle:

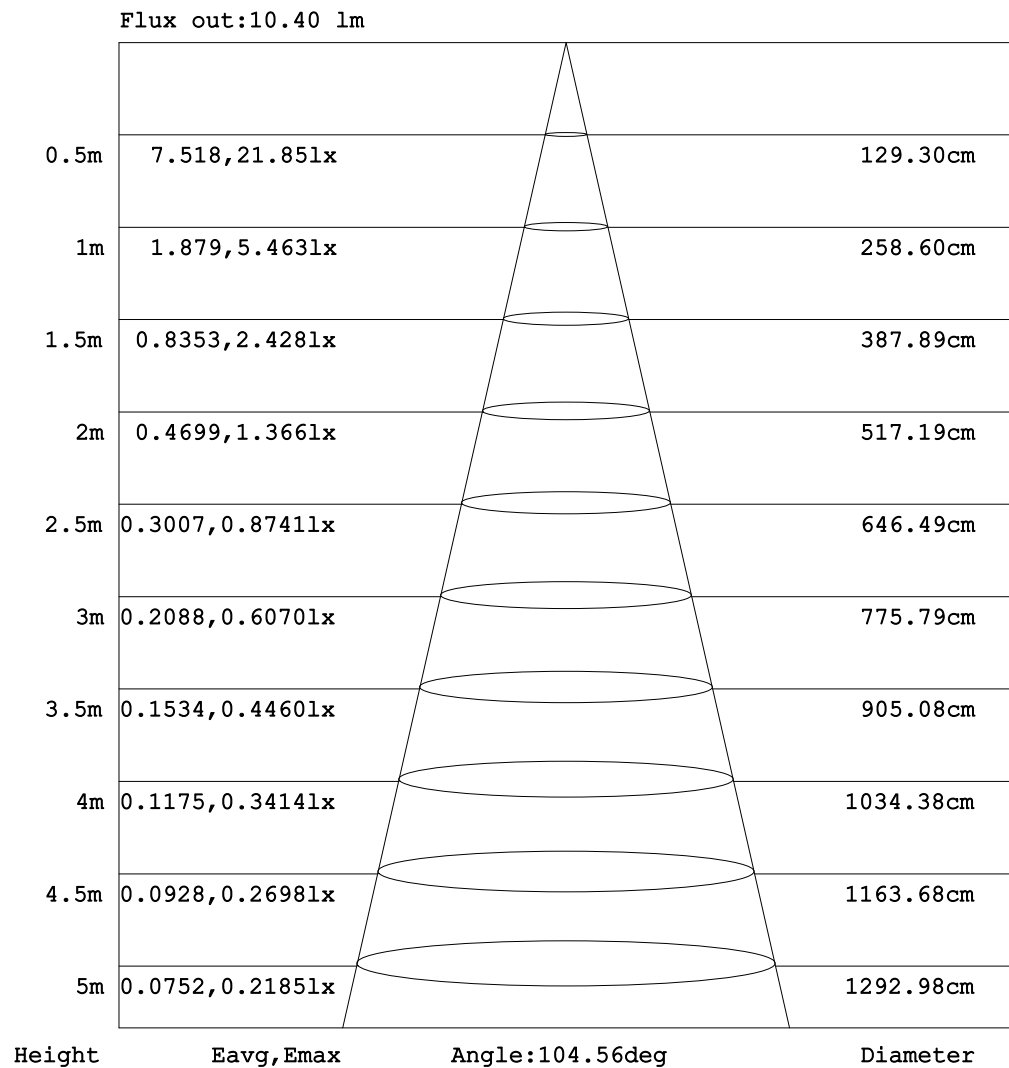


C Range: 0 - 360DEG
C Interval: 30.0DEG
Test Speed: HIGH
Temperature: 25.3DEG
Operators: LPC
Test Date: 2021-12-30

γ Range: 0 - 120DEG
 γ Interval: 1.0DEG
Test System: EVERFINE GO-2000B_V1 SYSTEM V2.0.362
Humidity: 65.0%
Test Distance: 9.200m [K=1.0000]
Remarks:

AAI Figure

Test:U:24.00V I:0.1909A P:4.582W PF:1.000 Freq:50.00Hz Lamp Flux:15.3136x1 lm		
NAME: SF15-24V-5050-56-DMX4SM-RGBW(4000)-B	TYPE: 硅胶	WEIGHT:
SPEC.:	DIM.: 21mm*11.5mm	SERIAL No.:2021123018
MFR.: OLYMPIA	SUR.:1*0.0115	Shielding Angle:



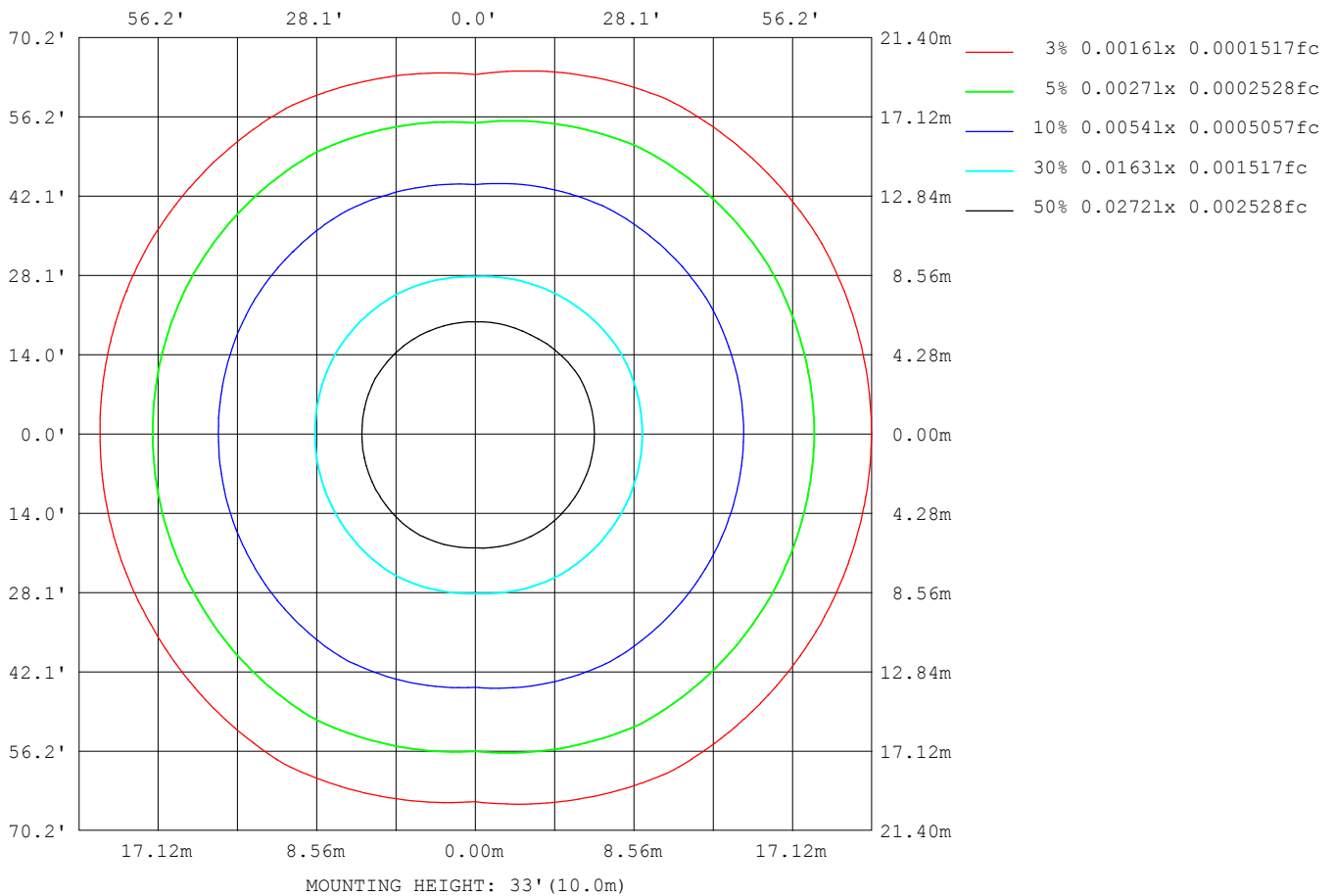
Note: The Curves indicate the illuminated area and the average illumination when the luminaire is at different distance.

C Range: 0 - 360DEG
 C Interval: 30.0DEG
 Test Speed: HIGH
 Temperature: 25.3DEG
 Operators: LPC
 Test Date: 2021-12-30

γ Range: 0 - 120DEG
 γ Interval: 1.0DEG
 Test System: EVERFINE GO-2000B_V1 SYSTEM V2.0.362
 Humidity: 65.0%
 Test Distance: 9.200m [K=1.0000]
 Remarks:

ISOLUX DIAGRAM

Test:U:24.00V I:0.1909A P:4.582W PF:1.000 Freq:50.00Hz Lamp Flux:15.3136x1 lm		
NAME: SF15-24V-5050-56-DMX4SM-RGBW(4000)-B	TYPE: 硅胶	WEIGHT:
SPEC.:	DIM.: 21mm*11.5mm	SERIAL No.:2021123018
MFR.: OLYMPIA	SUR.:1*0.0115	Shielding Angle:



C Range: 0 - 360DEG
C Interval: 30.0DEG
Test Speed: HIGH
Temperature:25.3DEG
Operators:LPC
Test Date:2021-12-30

γ Range: 0 - 120DEG
 γ Interval: 1.0DEG
Test System:EVERFINE GO-2000B_V1 SYSTEM V2.0.362
Humidity:65.0%
Test Distance:9.200m [K=1.0000]
Remarks:

LED Avg.L Report

Test:U:24.00V I:0.1909A P:4.582W PF:1.000 Freq:50.00Hz Lamp Flux:15.3136x1 lm		
NAME: SF15-24V-5050-56-DMX4SM-RGBW(4000)-B	TYPE:硅胶	WEIGHT:
SPEC.:	DIM.: 21mm*11.5mm	SERIAL No.:2021123018
MFR.: OLYMPIA	SUR.:1*0.0115	Shielding Angle:

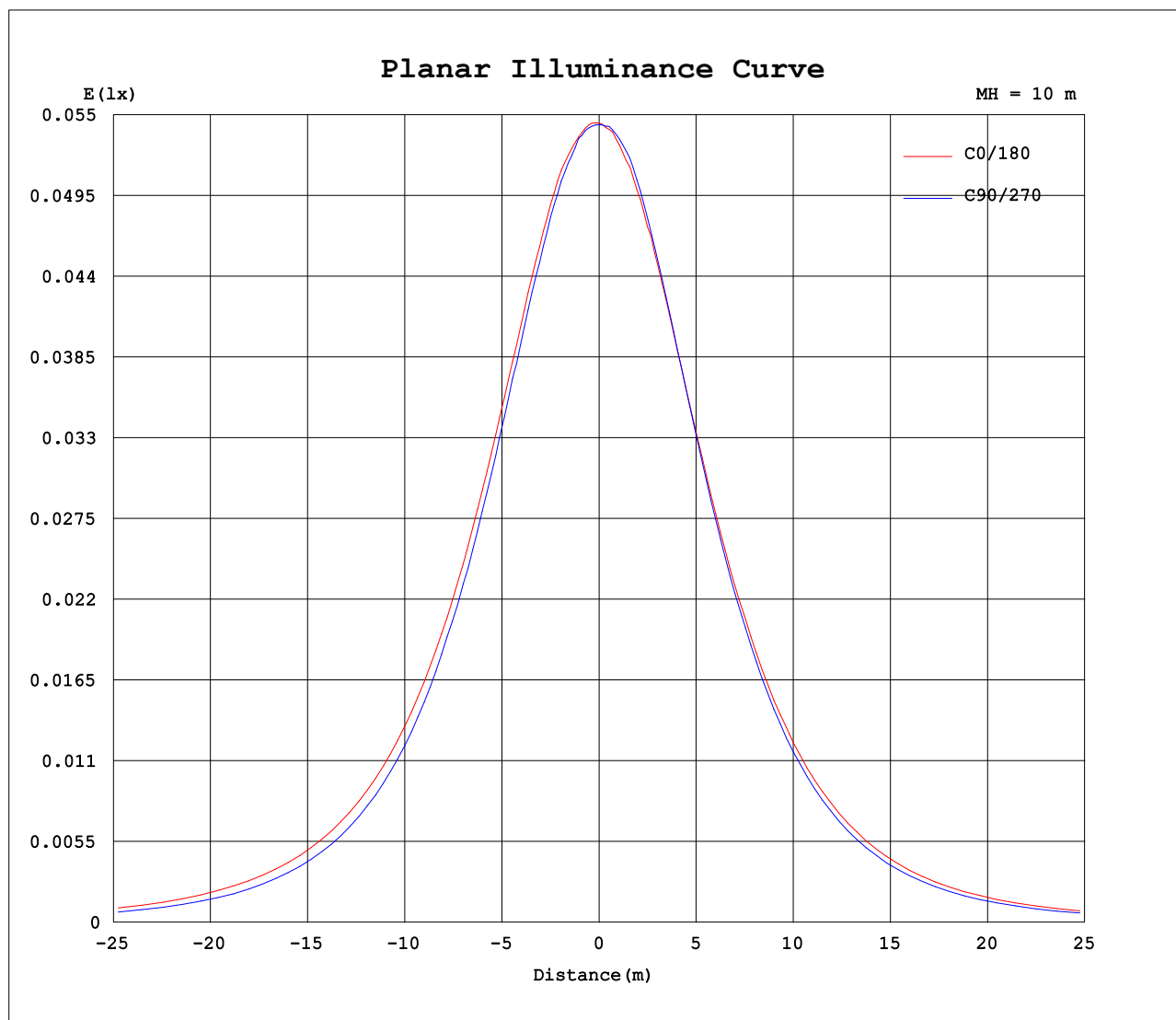
AvgL	cd/m2
L_0~180(65)av	402
L_0~180(75)av	361
L_0~180(85)av	321
L_90~270(65)av	323
L_90~270(75)av	221
L_90~270(85)av	5
L_45(65)av	402
L_45(75)av	360
L_45(85)av	292

Standard: GB/T 29293-2012

C Range: 0 - 360DEG
C Interval: 30.0DEG
Test Speed: HIGH
Temperature:25.3DEG
Operators:LPC
Test Date:2021-12-30

γ Range: 0 - 120DEG
γ Interval: 1.0DEG
Test System:EVERFINE GO-2000B_V1 SYSTEM V2.0.362
Humidity:65.0%
Test Distance:9.200m [K=1.0000]
Remarks:

Planar Illuminance Curve



C Range: 0 - 360DEG
C Interval: 30.0DEG
Test Speed: HIGH
Temperature: 25.3DEG
Operators: LPC
Test Date: 2021-12-30

γ Range: 0 - 120DEG
 γ Interval: 1.0DEG
Test System: EVERFINE GO-2000B_V1 SYSTEM V2.0.362
Humidity: 65.0%
Test Distance: 9.200m [K=1.0000]
Remarks:

LUMINOUS DISTRIBUTION INTENSITY DATA

Test:U:24.00V I:0.1909A P:4.582W PF:1.000 Freq:50.00Hz Lamp Flux:15.3136x1 lm		
NAME: SF15-24V-5050-56-DMX4SM-RGBW(4000)-B	TYPE: 硅胶	WEIGHT:
SPEC.:	DIM.: 21mm*11.5mm	SERIAL No.:2021123018
MFR.: OLYMPIA	SUR.:1*0.0115	Shielding Angle:

Table--1

UNIT: cd

C (DEG) γ (DEG)	0	30	60	90	120	150	180	210	240	270	300	330						
0	5.44	5.44	5.44	5.43	5.46	5.46	5.44	5.44	5.44	5.43	5.46	5.46						
5	5.44	5.43	5.43	5.42	5.47	5.41	5.40	5.45	5.42	5.43	5.43	5.46						
10	5.42	5.37	5.42	5.35	5.38	5.30	5.31	5.36	5.33	5.38	5.35	5.44						
15	5.32	5.27	5.31	5.22	5.24	5.18	5.19	5.21	5.17	5.22	5.21	5.32						
20	5.17	5.13	5.13	5.03	5.06	4.99	4.98	5.02	4.95	5.00	5.02	5.14						
25	4.97	4.94	4.91	4.79	4.83	4.78	4.74	4.78	4.72	4.73	4.77	4.93						
30	4.72	4.69	4.63	4.51	4.56	4.51	4.48	4.51	4.46	4.42	4.48	4.69						
35	4.44	4.39	4.33	4.19	4.26	4.19	4.17	4.21	4.16	4.08	4.17	4.41						
40	4.13	4.08	4.01	3.81	3.94	3.85	3.83	3.87	3.83	3.70	3.89	4.10						
45	3.78	3.73	3.65	3.41	3.56	3.49	3.47	3.50	3.47	3.29	3.56	3.75						
50	3.40	3.35	3.28	3.00	3.14	3.09	3.08	3.11	3.08	2.87	3.18	3.38						
55	3.00	2.95	2.88	2.54	2.75	2.68	2.65	2.69	2.67	2.42	2.79	2.99						
60	2.58	2.53	2.47	2.09	2.32	2.23	2.21	2.25	2.24	1.96	2.38	2.56						
65	2.14	2.10	2.03	1.65	1.88	1.78	1.76	1.79	1.79	1.49	1.95	2.12						
70	1.69	1.65	1.59	1.17	1.43	1.34	1.32	1.35	1.35	1.05	1.52	1.67						
75	1.26	1.22	1.16	0.72	0.99	0.89	0.88	0.90	0.91	0.59	1.09	1.24						
80	0.83	0.78	0.73	0.29	0.56	0.50	0.49	0.52	0.48	0.21	0.66	0.81						
85	0.45	0.39	0.35	0.01	0.23	0.20	0.20	0.23	0.14	0.00	0.28	0.42						
90	0.20	0.12	0.10	0.01	0.07	0.04	0.04	0.06	0.00	0.00	0.04	0.16						
95	0.06	0.02	0.03	0.01	0.05	0.03	0.00	0.01	0.00	0.00	0.00	0.04						
100	0.01	0.02	0.03	0.01	0.04	0.03	0.00	0.01	0.00	0.00	0.00	0.00						
105	0.01	0.02	0.02	0.01	0.02	0.03	0.00	0.01	0.00	0.00	0.00	0.00						
110	0.01	0.02	0.02	0.01	0.02	0.03	0.00	0.00	0.00	0.00	0.00	0.00						
115	0.01	0.02	0.02	0.01	0.02	0.03	0.00	0.00	0.00	0.00	0.00	0.00						
120	0.01	0.01	0.02	0.01	0.02	0.03	0.00	0.00	0.00	0.00	0.00	0.00						
125	0.00	0.00	0.00	0.00	0.00	0.00	0.00	0.00	0.00	0.00	0.00	0.00						
130	0.00	0.00	0.00	0.00	0.00	0.00	0.00	0.00	0.00	0.00	0.00	0.00						
135	0.00	0.00	0.00	0.00	0.00	0.00	0.00	0.00	0.00	0.00	0.00	0.00						
140	0.00	0.00	0.00	0.00	0.00	0.00	0.00	0.00	0.00	0.00	0.00	0.00						
145	0.00	0.00	0.00	0.00	0.00	0.00	0.00	0.00	0.00	0.00	0.00	0.00						
150	0.00	0.00	0.00	0.00	0.00	0.00	0.00	0.00	0.00	0.00	0.00	0.00						
155	0.00	0.00	0.00	0.00	0.00	0.00	0.00	0.00	0.00	0.00	0.00	0.00						
160	0.00	0.00	0.00	0.00	0.00	0.00	0.00	0.00	0.00	0.00	0.00	0.00						
165	0.00	0.00	0.00	0.00	0.00	0.00	0.00	0.00	0.00	0.00	0.00	0.00						
170	0.00	0.00	0.00	0.00	0.00	0.00	0.00	0.00	0.00	0.00	0.00	0.00						
175	0.00	0.00	0.00	0.00	0.00	0.00	0.00	0.00	0.00	0.00	0.00	0.00						
180	0.00	0.00	0.00	0.00	0.00	0.00	0.00	0.00	0.00	0.00	0.00	0.00						

C Range: 0 - 360DEG
C Interval: 30.0DEG
Test Speed: HIGH
Temperature:25.3DEG
Operators:LPC
Test Date:2021-12-30

γ Range: 0 - 120DEG
γ Interval: 1.0DEG
Test System:EVERFINE GO-2000B_V1 SYSTEM V2.0.362
Humidity:65.0%
Test Distance:9.200m [K=1.0000]
Remarks:

Photometric Data Table [cd]

G/C	0.0	30.0	60.0	90.0	120.0	150.0	180.0	210.0	240.0	270.0
0.0	5.443	5.443	5.438	5.433	5.463	5.458	5.443	5.443	5.438	5.433
3.0	5.453	5.438	5.438	5.433	5.463	5.423	5.423	5.453	5.418	5.443
6.0	5.438	5.423	5.428	5.427	5.453	5.382	5.382	5.433	5.392	5.423
9.0	5.423	5.392	5.419	5.367	5.408	5.337	5.342	5.378	5.347	5.403
12.0	5.398	5.342	5.393	5.302	5.333	5.257	5.262	5.307	5.257	5.322
15.0	5.323	5.272	5.307	5.216	5.242	5.176	5.186	5.207	5.166	5.217
18.0	5.237	5.196	5.207	5.111	5.142	5.066	5.055	5.107	5.040	5.092
21.0	5.127	5.091	5.082	4.985	5.021	4.945	4.930	4.971	4.915	4.946
24.0	5.011	4.970	4.951	4.859	4.880	4.814	4.789	4.840	4.779	4.790
27.0	4.875	4.824	4.800	4.688	4.730	4.658	4.638	4.685	4.613	4.609
30.0	4.725	4.688	4.634	4.508	4.564	4.513	4.477	4.514	4.457	4.418
33.0	4.559	4.508	4.453	4.306	4.388	4.317	4.296	4.343	4.296	4.217
36.0	4.378	4.332	4.262	4.095	4.197	4.126	4.105	4.147	4.090	4.006
39.0	4.192	4.136	4.077	3.894	4.001	3.924	3.904	3.946	3.894	3.780
42.0	3.991	3.945	3.871	3.653	3.785	3.733	3.688	3.735	3.683	3.544
45.0	3.780	3.733	3.654	3.407	3.564	3.487	3.467	3.504	3.467	3.288
48.0	3.554	3.507	3.433	3.165	3.328	3.251	3.231	3.272	3.236	3.036
51.0	3.323	3.271	3.202	2.899	3.086	3.010	2.994	3.026	3.004	2.775
54.0	3.077	3.035	2.961	2.633	2.840	2.763	2.733	2.780	2.753	2.509
57.0	2.830	2.788	2.720	2.371	2.584	2.492	2.477	2.519	2.497	2.227
60.0	2.579	2.532	2.468	2.095	2.318	2.226	2.210	2.247	2.235	1.956
63.0	2.318	2.286	2.207	1.813	2.052	1.959	1.954	1.991	1.969	1.669
66.0	2.056	2.005	1.946	1.532	1.785	1.688	1.678	1.700	1.703	1.393
69.0	1.785	1.743	1.679	1.261	1.524	1.421	1.436	1.453	1.441	1.132
72.0	1.534	1.487	1.433	0.9892	1.252	1.155	1.150	1.177	1.165	0.8603
75.0	1.262	1.216	1.162	0.7229	0.9860	0.8889	0.8837	0.9007	0.9138	0.5939
78.0	1.001	0.9491	0.9005	0.4566	0.7246	0.6426	0.6425	0.6691	0.6424	0.3526
81.0	0.7446	0.6928	0.6491	0.2205	0.4832	0.4315	0.4364	0.4479	0.4014	0.1513
84.0	0.5134	0.4616	0.4180	0.0399	0.2871	0.2607	0.2606	0.2770	0.2003	0.0003
87.0	0.3273	0.2759	0.2218	0.0050	0.1461	0.1203	0.1102	0.1411	0.0501	0
90.0	0.1964	0.1204	0.0958	0.0050	0.0705	0.0351	0.0449	0.0605	0	0
93.0	0.0908	0.0350	0.0454	0.0050	0.0453	0.0302	0	0.0201	0	0
96.0	0.0404	0.0151	0.0302	0.0050	0.0452	0.0302	0	0.0101	0	0
99.0	0.0151	0.0151	0.0302	0.0051	0.0403	0.0302	0	0.0101	0	0
102.0	0.0101	0.0151	0.0302	0.0101	0.0352	0.0302	0	0.0050	0	0
105.0	0.0101	0.0151	0.0201	0.0101	0.0201	0.0302	0	0.0050	0	0
108.0	0.0101	0.0151	0.0201	0.0101	0.0201	0.0302	0	0	0	0
111.0	0.0101	0.0151	0.0201	0.0101	0.0201	0.0302	0	0	0	0
114.0	0.0101	0.0151	0.0201	0.0101	0.0201	0.0302	0	0	0	0
117.0	0.0101	0.0150	0.0201	0.0101	0.0201	0.0302	0	0	0	0
120.0	0.0050	0.0101	0.0201	0.0101	0.0201	0.0251	0	0	0	0
G/C	300.0	330.0								
0.0	5.463	5.458								
3.0	5.438	5.458								
6.0	5.433	5.455								
9.0	5.372	5.453								
12.0	5.307	5.393								
15.0	5.206	5.317								
18.0	5.101	5.212								
21.0	4.965	5.092								
24.0	4.819	4.966								
27.0	4.653	4.835								
30.0	4.482	4.690								
33.0	4.306	4.524								
36.0	4.115	4.353								
39.0	3.935	4.162								
42.0	3.749	3.961								
45.0	3.557	3.755								
48.0	3.341	3.524								
51.0	3.115	3.293								
54.0	2.869	3.056								
57.0	2.628	2.805								
60.0	2.376	2.564								
63.0	2.120	2.308								
66.0	1.869	2.031								
69.0	1.602	1.770								
72.0	1.351	1.524								
75.0	1.090	1.242								
78.0	0.8286	0.9809								
81.0	0.5772	0.7294								
84.0	0.3360	0.4883								
87.0	0.1403	0.3020								
90.0	0.0398	0.1561								

C Range: 0 - 360DEG
 C Interval: 30.0DEG
 Test Speed: HIGH
 Temperature: 25.3DEG
 Operators: LPC
 Test Date: 2021-12-30

γ Range: 0 - 120DEG
 γ Interval: 1.0DEG
 Test System: EVERFINE GO-2000B_V1 SYSTEM V2.0.362
 Humidity: 65.0%
 Test Distance: 9.200m [K=1.0000]
 Remarks:

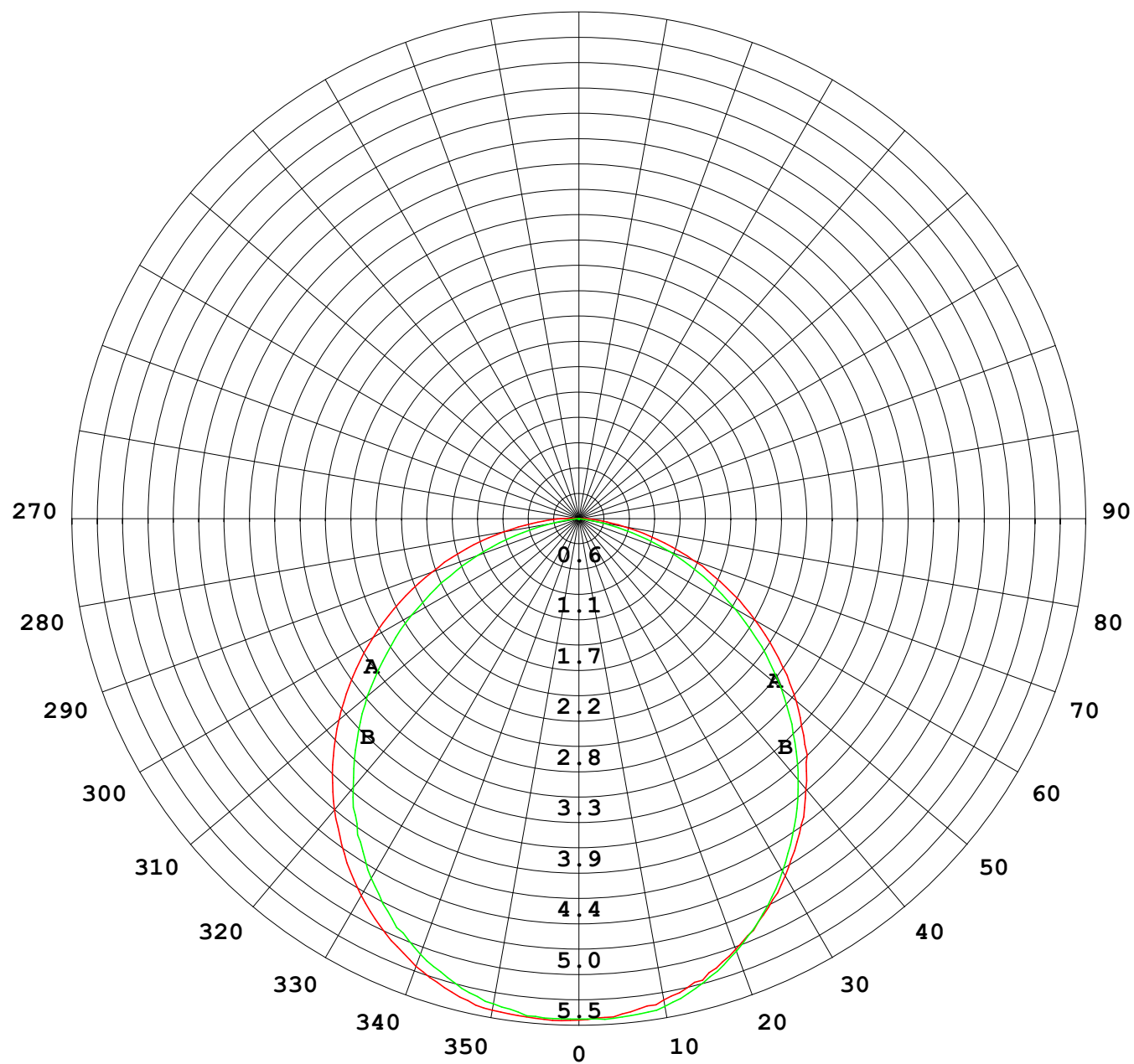
Photometric Data Table [cd]

93.0	0	0.0756
96.0	0	0.0252
99.0	0	0.0001
102.0	0	0
105.0	0	0
108.0	0	0
111.0	0	0
114.0	0	0
117.0	0	0
120.0	0	0

C Range: 0 - 360DEG
C Interval: 30.0DEG
Test Speed: HIGH
Temperature: 25.3DEG
Operators: LPC
Test Date: 2021-12-30

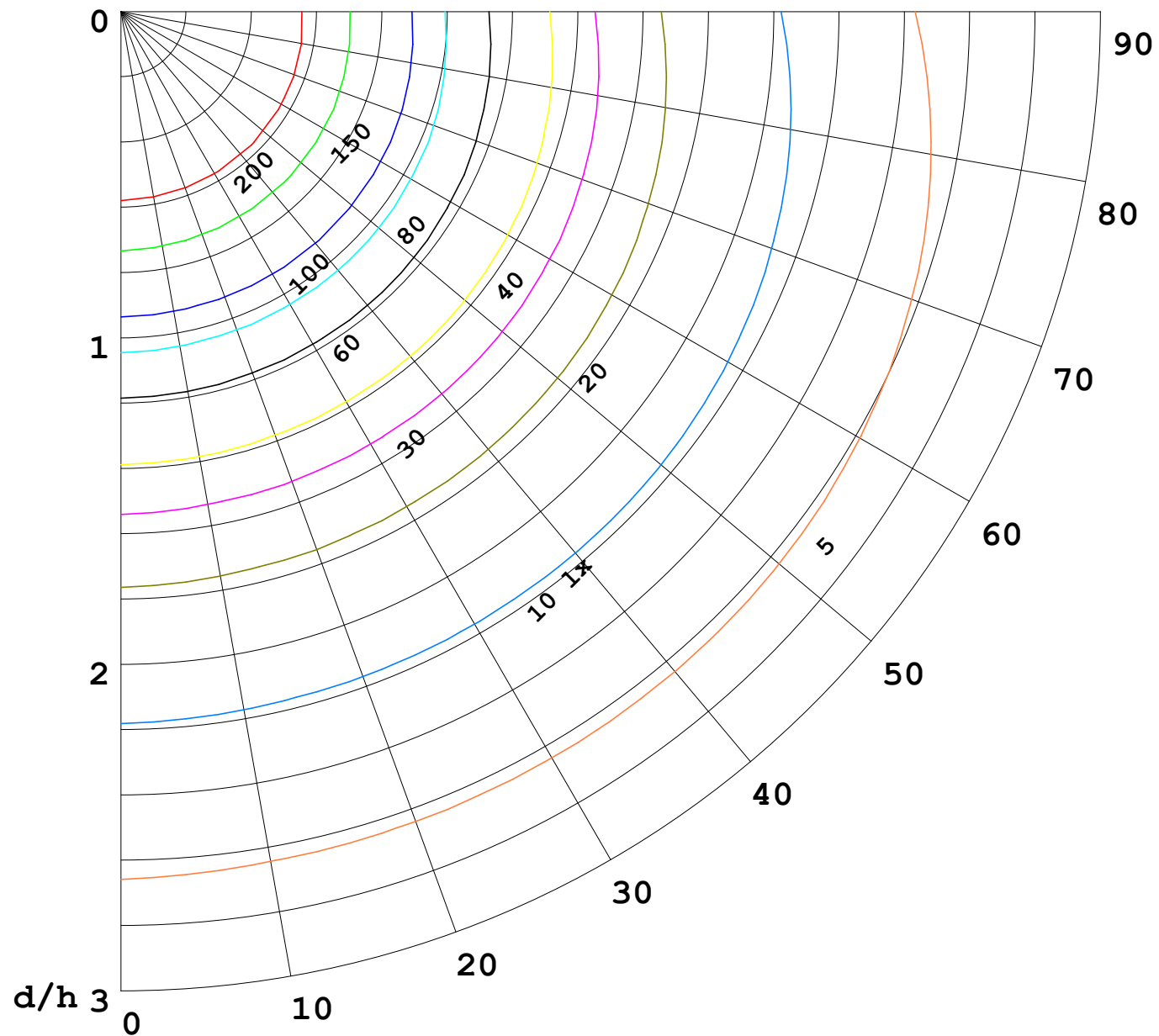
γ Range: 0 - 120DEG
γ Interval: 1.0DEG
Test System: EVERFINE GO-2000B_V1 SYSTEM V2.0.362
Humidity: 65.0%
Test Distance: 9.200m [K=1.0000]
Remarks:

I (cd)



1000 lm

$\kappa = 1$



F = 5000 lm
 K = 0.7
 Hcc = 0.0 m
 Hfc = 0.0 m
 Eave = 100 lx

	Pcc	Pw	Pfc
—	70	50	30
—	50	30	20

