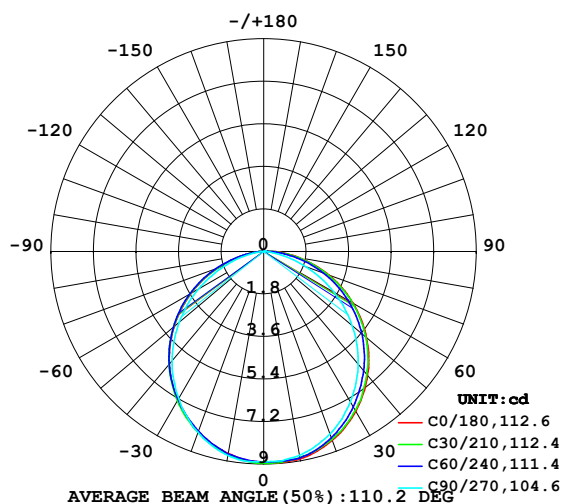


LUMINAIRE PHOTOMETRIC TEST REPORT

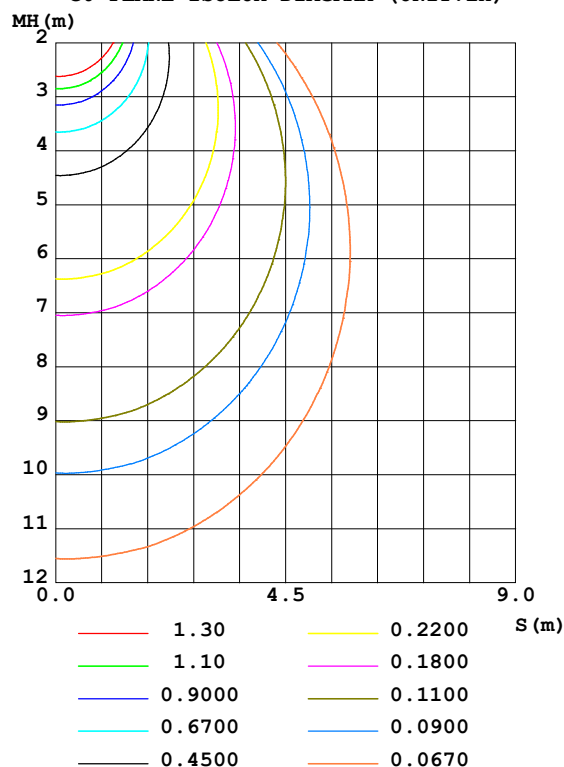
Test:U:24.00V I:0.1909A P:4.582W PF:1.000 Freq:50.00Hz Lamp Flux:25.296x1 lm		
NAME: SF15-24V-5050-56-DMX4SM-RGBW(4000)-R	TYPE: 硅胶	WEIGHT:
SPEC.:	DIM.: 21mm*11.5mm	SERIAL No.: 2021123016
MFR.: OLYMPIA	SUR.: 1*0.0115	Shielding Angle:

DATA OF LAMP		PHOTOMETRIC DATA				Eff: 5.52 lm/W
MODEL	5050	I _{max} (cd)	8.971	S/MH (C0/180)	1.22	
NOMINAL POWER (W)	3.75	LOR (%)	100.0	S/MH (C90/270)	1.21	
RATED VOLTAGE (V)	24	TOTAL FLUX (lm)	25.296	η UP, DN (C0-180)	0.5, 50.6	
NOMINAL FLUX (lm)	25.296	CIE CLASS	DIRECT	η UP, DN (C180-360)	0.3, 48.6	
LAMPS INSIDE	1	η up (%)	0.8	CIBSE SHR NOM	1.25	
TEST VOLTAGE (V)	24	η down (%)	99.2	CIBSE SHR MAX	1.35	

LUMINOUS INTENSITY DISTRIBUTION DIAGRAM



C0 PLANE ISOLUX DIAGRAM (UNIT: lx)



C Range: 0 - 360DEG
 C Interval: 30.0DEG
 Test Speed: HIGH
 Temperature: 25.3DEG
 Operators: LPC
 Test Date: 2021-12-30

γ Range: 0 - 120DEG
 γ Interval: 1.0DEG
 Test System: EVERFINE GO-2000B_V1 SYSTEM V2.0.362
 Humidity: 65.0%
 Test Distance: 9.200m [K=1.0000]
 Remarks:

ZONAL FLUX DIAGRAM

ZONAL FLUX DIAGRAM:

γ	C0	C45	C90	C135	C180	C225	C270	C315	γ	Φ zone	Φ total	%lum, lamp
10	8.911	8.860	8.755	8.685	8.684	8.715	8.765	8.825	0- 10	0.8445	0.8445	3.34,3.34
20	8.499	8.426	8.217	8.129	8.111	8.117	8.142	8.318	10- 20	2.412	3.256	12.9,12.9
30	7.801	7.669	7.352	7.302	7.276	7.275	7.198	7.551	20- 30	3.628	6.884	27.2,27.2
40	6.836	6.687	6.226	6.249	6.216	6.232	6.032	6.599	30- 40	4.343	11.23	44.4,44.4
50	5.686	5.538	4.889	5.001	4.944	4.985	4.680	5.480	40- 50	4.485	15.71	62.1,62.1
60	4.364	4.217	3.426	3.611	3.557	3.608	3.203	4.176	50- 60	4.032	19.74	78.1,78.1
70	2.946	2.802	1.903	2.141	2.079	2.133	1.680	2.779	60- 70	3.058	22.80	90.1,90.1
80	1.524	1.385	0.5065	0.7967	0.7678	0.7789	0.3729	1.364	70- 80	1.745	24.55	97,97
90	0.4129	0.2840	0.0251	0.1206	0.0652	0.0705	0	0.2514	80- 90	0.5373	25.09	99.2,99.2
100	0.0654	0.0729	0.0453	0.0930	0.0553	0.0477	0	0.0327	90-100	0.0959	25.18	99.5,99.5
110	0.0552	0.0653	0.0553	0.0829	0.0553	0.0553	0	0.0427	100-110	0.0564	25.24	99.8,99.8
120	0.0704	0.0628	0.0603	0.0804	0.0503	0.0603	0.0050	0.0427	110-120	0.0558	25.29	100,100
130	0	0	0	0	0	0	0	0	120-130	0.0027	25.30	100,100
140	0	0	0	0	0	0	0	0	130-140	0	25.30	100,100
150	0	0	0	0	0	0	0	0	140-150	0	25.30	100,100
160	0	0	0	0	0	0	0	0	150-160	0	25.30	100,100
170	0	0	0	0	0	0	0	0	160-170	0	25.30	100,100
180	0	0	0	0	0	0	0	0	170-180	0	25.30	100,100
DEG	LUMINOUS INTENSITY:cd									UNIT:lm		

Conical surface Flux(90deg): 13.491 lm

%lum = 53.3%

%lamp = 53.3%

Conical surface Flux(120deg): 19.745 lm

%lum = 78.1%

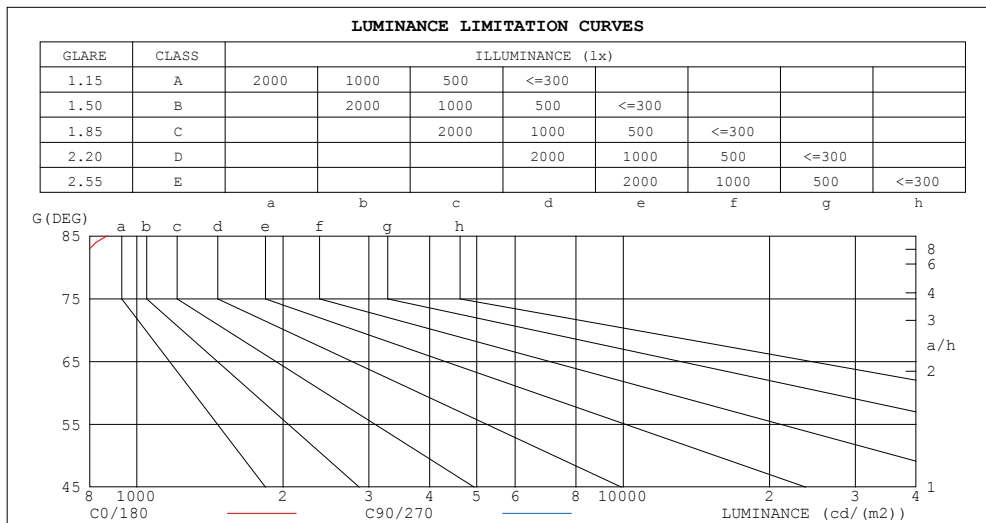
%lamp = 78.1%

C Range: 0 - 360DEG
 C Interval: 30.0DEG
 Test Speed: HIGH
 Temperature:25.3DEG
 Operators:LPC
 Test Date:2021-12-30

γ Range: 0 - 120DEG
 γ Interval: 1.0DEG
 Test System:EVERFINE GO-2000B_V1 SYSTEM V2.0.362
 Humidity:65.0%
 Test Distance:9.200m [K=1.0000]
 Remarks:

LUMINANCE LIMITATION CURVES

Test:U:24.00V I:0.1909A P:4.582W PF:1.000 Freq:50.00Hz Lamp Flux:25.296x1 lm		
NAME: SF15-24V-5050-56-DMX4SM-RGBW(4000)-R	TYPE: 硅胶	WEIGHT:
SPEC.:	DIM.: 21mm*11.5mm	SERIAL No.:2021123016
MFR.: OLYMPIA	SUR.:1*0.0115	Shielding Angle:



LUMINANCE cd/(m2)		
G (DEG)	C0/180	C90/270
85	869	30
80	763	254
75	747	396
70	749	484
65	754	550
60	759	596
55	764	632
50	769	661
45	774	686

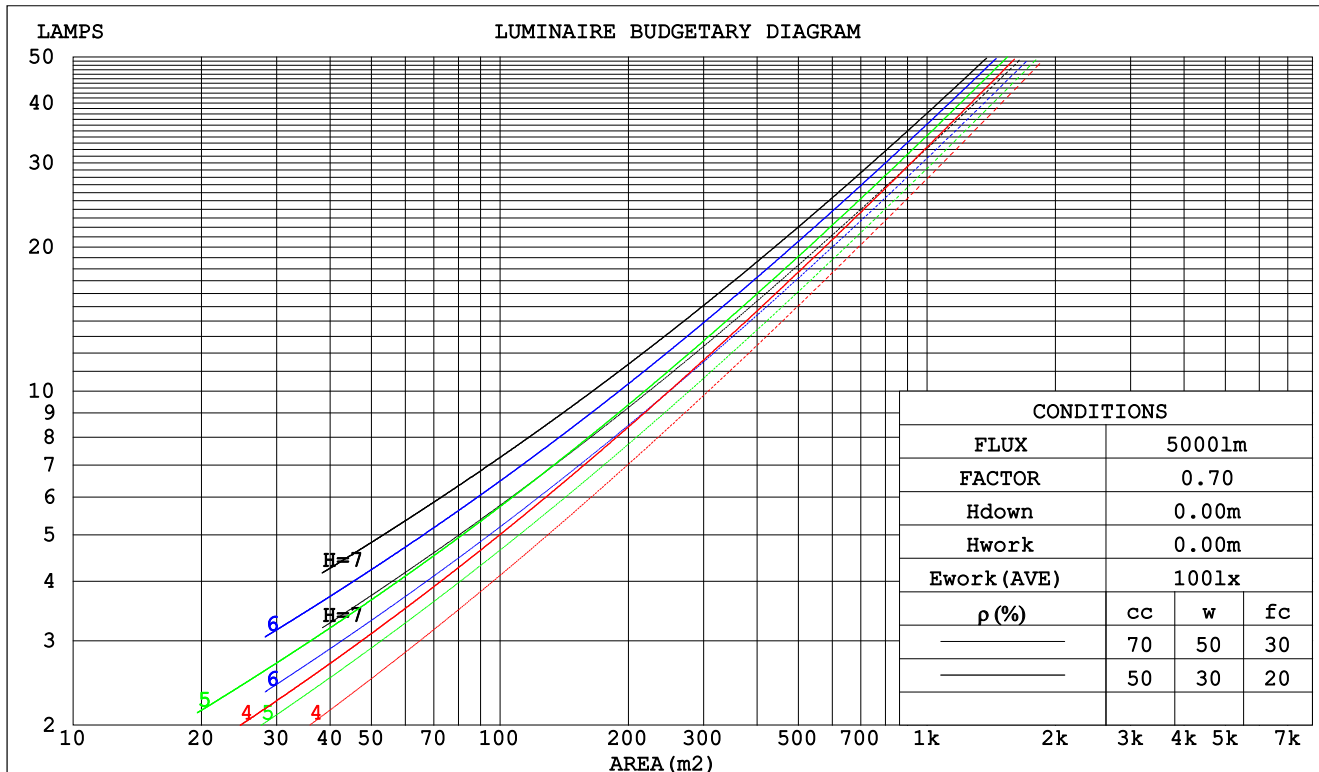
C Range: 0 - 360DEG
C Interval: 30.0DEG
Test Speed: HIGH
Temperature:25.3DEG
Operators:LPC
Test Date:2021-12-30

γ Range: 0 - 120DEG
γ Interval: 1.0DEG
Test System:EVERFINE GO-2000B_V1 SYSTEM V2.0.362
Humidity:65.0%
Test Distance:9.200m [K=1.0000]
Remarks:

CU AND LUMINAIRE BUDGETARY ESTIMATE DIAGRAM

Test:U:24.00V I:0.1909A P:4.582W PF:1.000 Freq:50.00Hz Lamp Flux:25.296x1 lm		
NAME: SF15-24V-5050-56-DMX4SM-RGBW(4000)-R	TYPE: 硅胶	WEIGHT:
SPEC.:	DIM.: 21mm*11.5mm	SERIAL No.:2021123016
MFR.: OLYMPIA	SUR.:1*0.0115	Shielding Angle:

pcc	80%			70%			50%			30%			10%			0
pw	50%	30%	10%	50%	30%	10%	50%	30%	10%	50%	30%	10%	50%	30%	10%	0
pfc	20%			20%			20%			20%			20%			0
RCR	RCR:Room Cavity Ratio						Coefficients of Utilization(CU)									
0.0	1.19	1.19	1.19	1.16	1.16	1.16	1.11	1.11	1.11	1.06	1.06	1.06	1.01	1.01	1.01	.99
1.0	1.04	.99	.95	1.01	.97	.94	.97	.94	.91	.93	.90	.88	.89	.87	.85	.83
2.0	.90	.83	.78	.88	.82	.77	.85	.79	.75	.81	.77	.73	.78	.74	.71	.69
3.0	.79	.71	.64	.78	.70	.64	.74	.68	.63	.72	.66	.61	.69	.64	.60	.58
4.0	.70	.61	.55	.69	.61	.54	.66	.59	.53	.64	.57	.52	.61	.56	.52	.49
5.0	.63	.54	.47	.61	.53	.47	.59	.52	.46	.57	.51	.45	.55	.50	.45	.43
6.0	.56	.47	.41	.55	.47	.41	.54	.46	.40	.52	.45	.40	.50	.44	.39	.37
7.0	.51	.42	.36	.50	.42	.36	.49	.41	.36	.47	.40	.35	.46	.40	.35	.33
8.0	.47	.38	.32	.46	.38	.32	.45	.37	.32	.43	.37	.32	.42	.36	.31	.29
9.0	.43	.35	.29	.42	.34	.29	.41	.34	.29	.40	.33	.29	.39	.33	.28	.26
10.0	.40	.32	.26	.39	.31	.26	.38	.31	.26	.37	.30	.26	.36	.30	.26	.24



C Range: 0 - 360DEG
 C Interval: 30.0DEG
 Test Speed: HIGH
 Temperature:25.3DEG
 Operators:LPC
 Test Date:2021-12-30

γ Range: 0 - 120DEG
 γ Interval: 1.0DEG
 Test System:EVERFINE GO-2000B_V1 SYSTEM V2.0.362
 Humidity:65.0%
 Test Distance:9.200m [K=1.0000]
 Remarks:

WEC AND CCEC

Test:U:24.00V I:0.1909A P:4.582W PF:1.000 Freq:50.00Hz Lamp Flux:25.296x1 lm		
NAME: SF15-24V-5050-56-DMX4SM-RGBW(4000)-R	TYPE: 硅胶	WEIGHT:
SPEC.:	DIM.: 21mm*11.5mm	SERIAL No.:2021123016
MFR.: OLYMPIA	SUR.:1*0.0115	Shielding Angle:

pcc	80%			70%			50%			30%			10%			0	
pw	50%	30%	10%	50%	30%	10%	50%	30%	10%	50%	30%	10%	50%	30%	10%	0	
pfc	20%			20%			20%			20%			20%			0	
RCR	RCR:Room Cavity Ratio						Wall Exitance Coefficients(WEC)										
0.0																	
1.0	.311	.177	.056	.304	.173	.055	.290	.166	.053	.277	.160	.051	.266	.154	.050		
2.0	.292	.160	.049	.285	.157	.048	.273	.152	.047	.262	.147	.046	.252	.142	.045		
3.0	.270	.144	.043	.264	.141	.043	.253	.137	.042	.243	.133	.041	.234	.130	.040		
4.0	.249	.129	.038	.244	.128	.038	.234	.124	.037	.225	.121	.036	.217	.118	.036		
5.0	.230	.117	.034	.225	.116	.034	.217	.113	.033	.209	.110	.033	.202	.108	.032		
6.0	.213	.107	.031	.209	.106	.030	.202	.103	.030	.195	.101	.030	.188	.099	.029		
7.0	.198	.098	.028	.195	.097	.028	.188	.095	.027	.182	.093	.027	.176	.091	.027		
8.0	.185	.091	.025	.182	.090	.025	.176	.088	.025	.170	.086	.025	.165	.085	.025		
9.0	.174	.084	.023	.171	.083	.023	.165	.082	.023	.160	.080	.023	.155	.079	.023		
10.0	.163	.078	.022	.161	.078	.022	.156	.076	.021	.151	.075	.021	.147	.074	.021		

pcc	80%			70%			50%			30%			10%			0
pw	50%	30%	10%	50%	30%	10%	50%	30%	10%	50%	30%	10%	50%	30%	10%	0
pfc	20%			20%			20%			20%			20%			0
RCR	RCR:Room Cavity Ratio						Ceiling Cavity Exitance Coefficients(CCEC)									
0.0	.197	.197	.197	.168	.168	.168	.115	.115	.115	.066	.066	.066	.021	.021	.021	
1.0	.187	.163	.141	.160	.139	.121	.109	.096	.084	.063	.056	.049	.020	.018	.016	
2.0	.179	.138	.104	.153	.119	.090	.105	.082	.063	.060	.048	.037	.019	.016	.012	
3.0	.171	.121	.081	.147	.104	.070	.101	.072	.049	.058	.042	.029	.019	.014	.009	
4.0	.163	.107	.065	.140	.093	.056	.096	.065	.040	.056	.038	.023	.018	.012	.008	
5.0	.156	.097	.054	.134	.084	.047	.092	.059	.033	.053	.034	.020	.017	.011	.006	
6.0	.149	.089	.046	.128	.077	.040	.088	.054	.028	.051	.032	.017	.017	.010	.006	
7.0	.142	.082	.040	.122	.071	.035	.084	.050	.025	.049	.029	.015	.016	.010	.005	
8.0	.135	.076	.035	.117	.066	.031	.081	.046	.022	.047	.027	.013	.015	.009	.004	
9.0	.129	.071	.032	.111	.062	.028	.077	.043	.020	.045	.026	.012	.015	.008	.004	
10.0	.124	.067	.029	.107	.058	.025	.074	.041	.018	.043	.024	.011	.014	.008	.004	

C Range: 0 - 360DEG
C Interval: 30.0DEG
Test Speed: HIGH
Temperature:25.3DEG
Operators:LPC
Test Date:2021-12-30

γ Range: 0 - 120DEG
γ Interval: 1.0DEG
Test System:EVERFINE GO-2000B_V1 SYSTEM V2.0.362
Humidity:65.0%
Test Distance:9.200m [K=1.0000]
Remarks:

UGR(Unified Glare Rating) Table

Test:U:24.00V I:0.1909A P:4.582W PF:1.000 Freq:50.00Hz Lamp Flux:25.296x1 lm											
NAME: SF15-24V-5050-56-DMX4SM-RGBW(4000)-R						TYPE:硅胶			WEIGHT:		
SPEC.:						DIM.: 21mm*11.5mm			SERIAL No.:2021123016		
MFR.: OLYMPIA						SUR.:1*0.0115			Shielding Angle:		
ceiling/cavity	0.7	0.7	0.5	0.5	0.3	0.7	0.7	0.5	0.5	0.3	
walls	0.5	0.3	0.5	0.3	0.3	0.5	0.3	0.5	0.3	0.3	
working plane	0.2	0.2	0.2	0.2	0.2	0.2	0.2	0.2	0.2	0.2	
Room dimensions	Viewed crosswise					Viewed endwise					
x = 2H y = 2H	25.0	26.5	25.3	26.8	27.0	24.3	25.8	24.6	26.0	26.2	
	3H	26.8	28.2	27.1	28.4	28.7	25.6	27.0	25.9	27.3	27.5
	4H	27.5	28.9	27.9	29.1	29.4	26.1	27.4	26.4	27.7	27.9
	6H	28.2	29.4	28.5	29.7	30.0	26.3	27.5	26.6	27.8	28.1
	8H	28.5	29.7	28.8	30.0	30.3	26.3	27.5	26.6	27.8	28.1
	12H	28.7	29.9	29.1	30.2	30.5	26.2	27.4	26.6	27.7	28.0
4H	2H	25.7	27.0	26.0	27.2	27.5	25.1	26.4	25.4	26.7	27.0
	3H	27.6	28.8	28.0	29.1	29.4	26.7	27.9	27.1	28.2	28.5
	4H	28.5	29.6	28.9	29.9	30.3	27.3	28.4	27.7	28.7	29.1
	6H	29.3	30.3	29.7	30.6	31.0	27.7	28.6	28.1	29.0	29.4
	8H	29.7	30.5	30.1	30.9	31.3	27.7	28.6	28.2	29.0	29.4
	12H	30.0	30.8	30.4	31.2	31.6	27.7	28.5	28.2	28.9	29.4
8H	4H	28.8	29.7	29.2	30.1	30.5	27.8	28.7	28.2	29.0	29.5
	6H	29.8	30.5	30.3	31.0	31.4	28.4	29.1	28.8	29.5	30.0
	8H	30.3	30.9	30.8	31.4	31.8	28.6	29.2	29.0	29.7	30.1
	12H	30.7	31.3	31.2	31.7	32.2	28.6	29.2	29.1	29.7	30.1
12H	4H	28.8	29.6	29.3	30.0	30.5	27.8	28.7	28.3	29.1	29.5
	6H	29.9	30.5	30.4	31.0	31.5	28.5	29.2	29.0	29.6	30.1
	8H	30.4	31.0	30.9	31.4	31.9	28.8	29.4	29.3	29.8	30.3
Variations with the observer position at spacings:											
S = 1.0H	+ 0.1 / - 0.2					+ 0.2 / - 0.2					
1.5H	+ 0.2 / - 0.3					+ 0.2 / - 0.4					
2.0H	+ 0.1 / - 0.3					+ 0.2 / - 0.5					

CIE Pub.117, 25.30 lm Total Lamp Luminous Flux Correct (8log(F/F0) = -12.8)

C Range: 0 - 360DEG
C Interval: 30.0DEG
Test Speed: HIGH
Temperature:25.3DEG
Operators:LPC
Test Date:2021-12-30

γ Range: 0 - 120DEG
γ Interval: 1.0DEG
Test System:EVERFINE GO-2000B_V1 SYSTEM V2.0.362
Humidity:65.0%
Test Distance:9.200m [K=1.0000]
Remarks:

UTILIZATION FACTORS TABLE

Test:U:24.00V I:0.1909A P:4.582W PF:1.000 Freq:50.00Hz Lamp Flux:25.296x1 lm		
NAME: SF15-24V-5050-56-DMX4SM-RGBW(4000)-R	TYPE: 硅胶	WEIGHT:
SPEC.:	DIM.: 21mm*11.5mm	SERIAL No.:2021123016
MFR.: OLYMPIA	SUR.:1*0.0115	Shielding Angle:

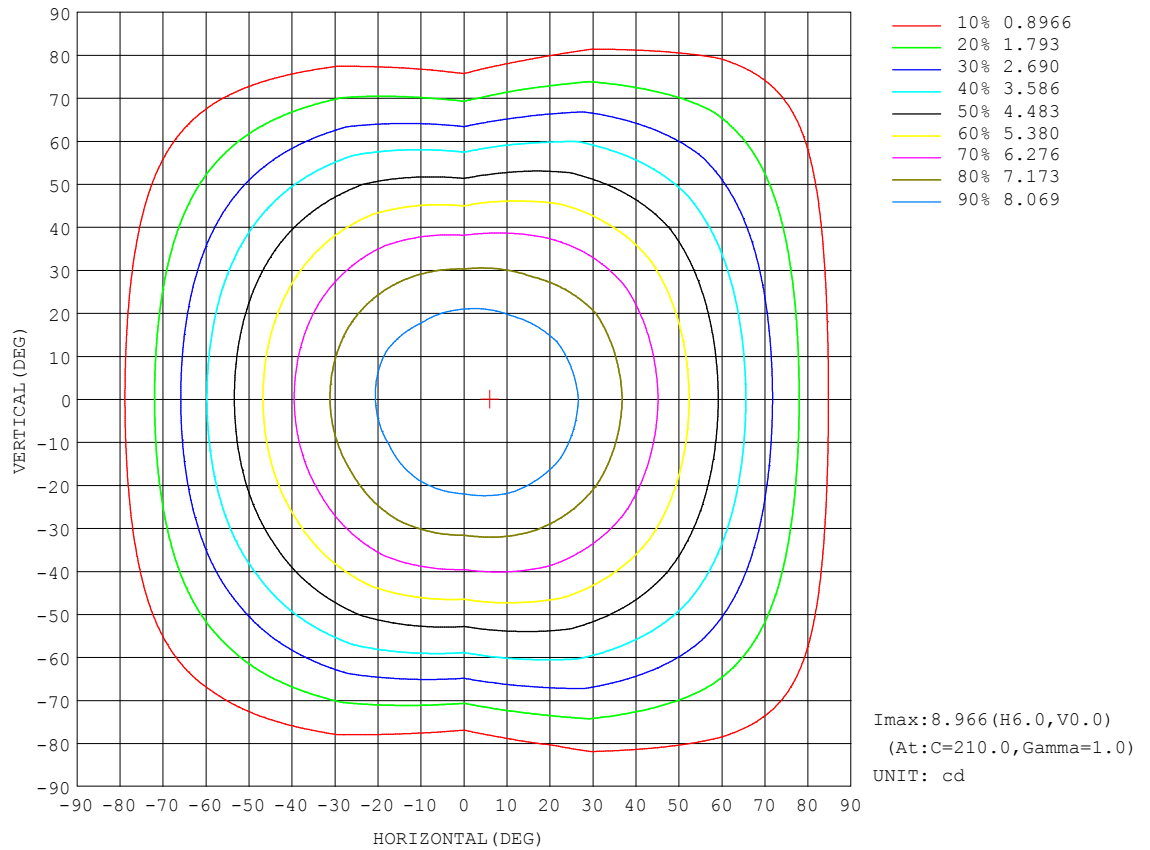
REFLECTANCE										
Ceiling	0.8	0.8	0.8	0.7	0.7	0.7	0.5	0.5	0.5	0
Walls	0.7	0.5	0.3	0.7	0.5	0.3	0.7	0.5	0.3	0
Working plane	0.2	0.2	0.2	0.2	0.2	0.2	0.2	0.2	0.2	0
ROOM INDEX	UTILIZATION FACTORS (PERCENT) $k(RI) \times RCR = 5$									
$k = 0.60$	57	46	39	57	45	39	55	45	38	32
0.80	67	56	48	66	55	48	64	54	48	41
1.00	76	65	57	74	64	57	72	65	56	49
1.25	83	72	65	81	71	65	79	70	64	56
1.50	88	78	71	86	77	70	83	75	69	62
2.00	95	86	79	93	85	79	89	82	77	69
2.50	99	91	85	96	89	84	92	87	82	73
3.00	102	95	89	100	93	88	96	90	86	77
4.00	106	100	95	103	98	94	99	95	91	82
5.00	108	103	99	106	101	98	101	98	95	85
ROOM INDEX	UF(total)									Direct
According to DIN EN 13032-2 2004			Suspended					SHRNM = 1.25		

C Range: 0 - 360DEG
 C Interval: 30.0DEG
 Test Speed: HIGH
 Temperature:25.3DEG
 Operators:LPC
 Test Date:2021-12-30

γ Range: 0 - 120DEG
 γ Interval: 1.0DEG
 Test System:EVERFINE GO-2000B_V1 SYSTEM V2.0.362
 Humidity:65.0%
 Test Distance:9.200m [K=1.0000]
 Remarks:

ISOCANDELA DIAGRAM

Test:U:24.00V I:0.1909A P:4.582W PF:1.000 Freq:50.00Hz Lamp Flux:25.296x1 lm		
NAME: SF15-24V-5050-56-DMX4SM-RGBW(4000)-R	TYPE: 硅胶	WEIGHT:
SPEC.:	DIM.: 21mm*11.5mm	SERIAL No.:2021123016
MFR.: OLYMPIA	SUR.:1*0.0115	Shielding Angle:

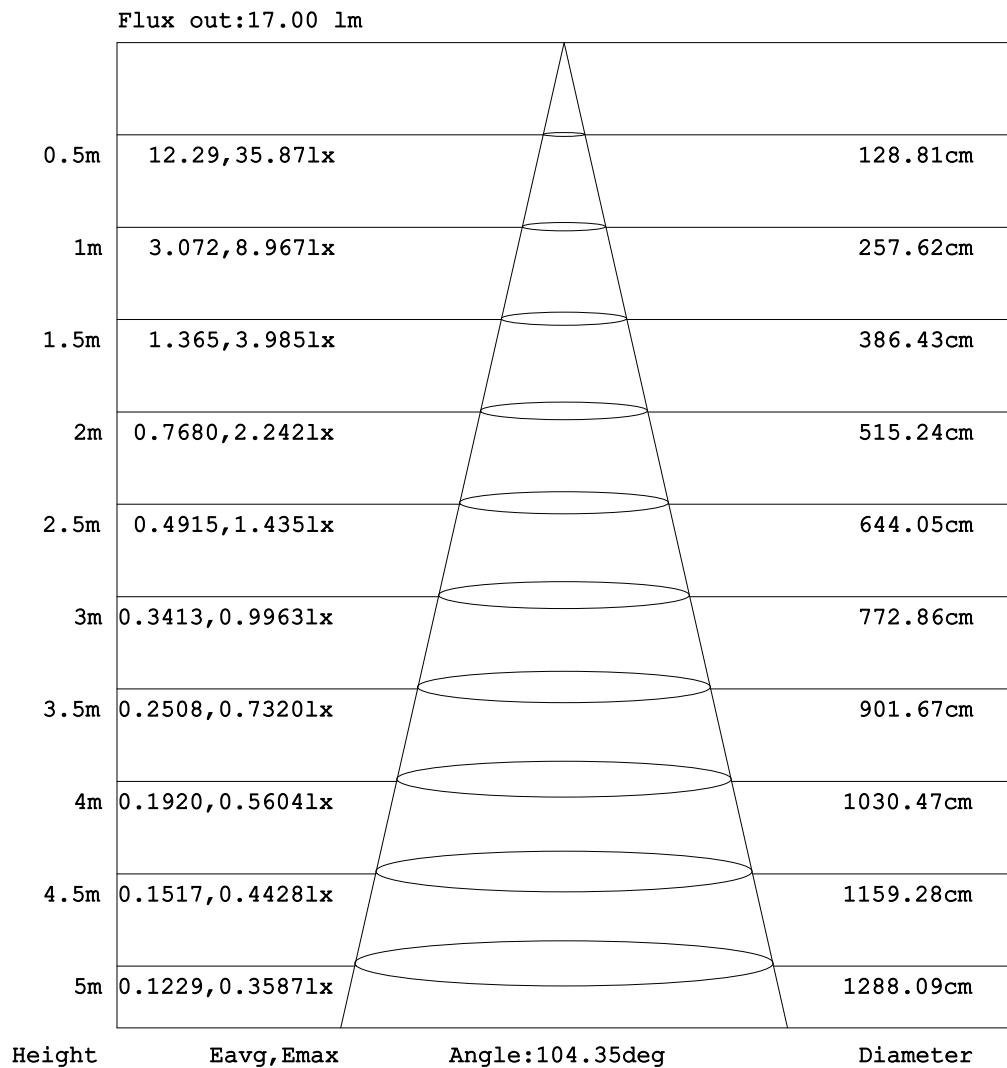


C Range: 0 - 360DEG
C Interval: 30.0DEG
Test Speed: HIGH
Temperature:25.3DEG
Operators:LPC
Test Date:2021-12-30

γ Range: 0 - 120DEG
 γ Interval: 1.0DEG
Test System:EVERFINE GO-2000B_V1 SYSTEM V2.0.362
Humidity:65.0%
Test Distance:9.200m [K=1.0000]
Remarks:

AAI Figure

Test:U:24.00V I:0.1909A P:4.582W PF:1.000 Freq:50.00Hz Lamp Flux:25.296x1 lm		
NAME: SF15-24V-5050-56-DMX4SM-RGBW(4000)-R	TYPE: 硅胶	WEIGHT:
SPEC.:	DIM.: 21mm*11.5mm	SERIAL No.:2021123016
MFR.: OLYMPIA	SUR.:1*0.0115	Shielding Angle:



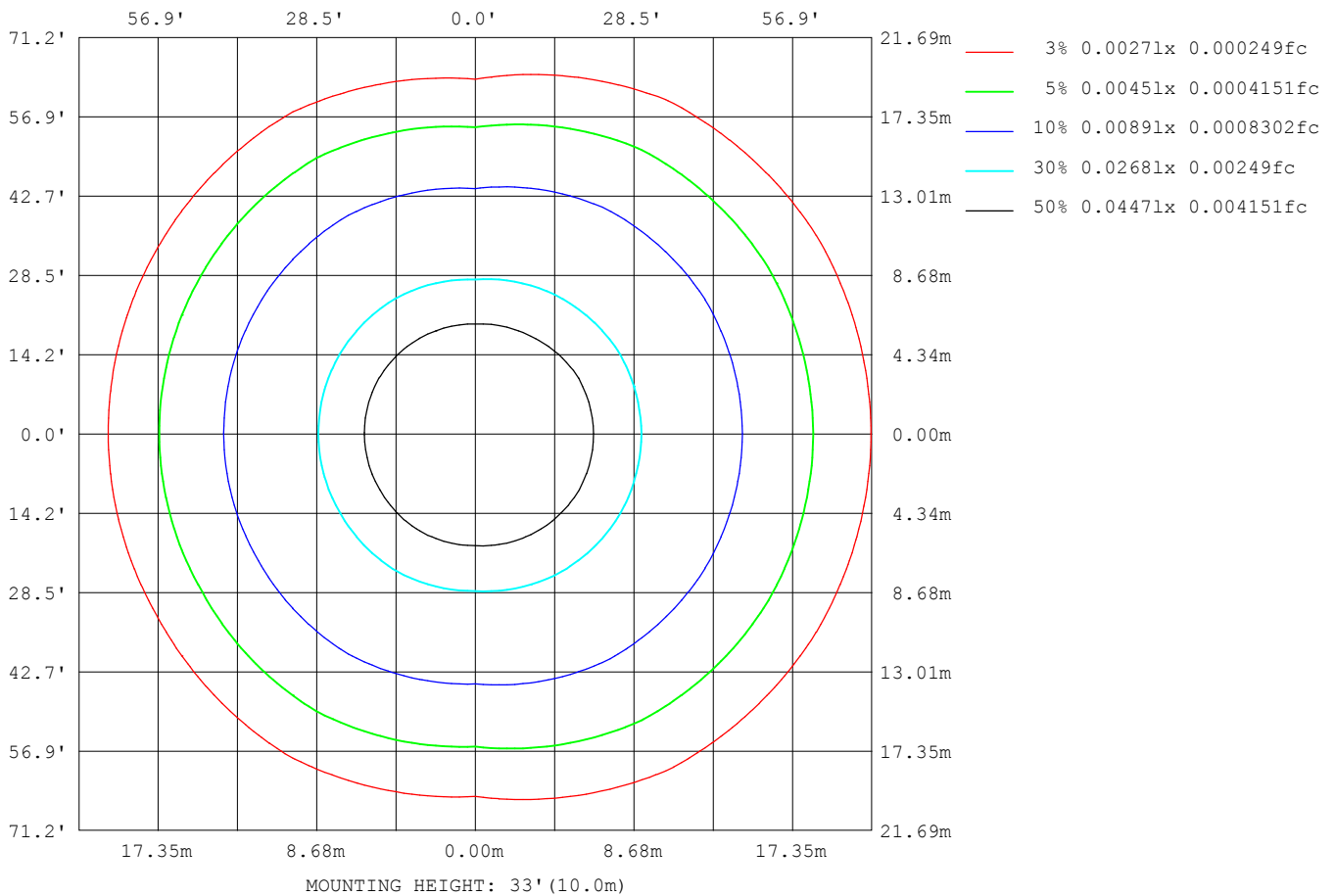
Note: The Curves indicate the illuminated area and the average illumination when the luminaire is at different distance.

C Range: 0 - 360DEG
C Interval: 30.0DEG
Test Speed: HIGH
Temperature:25.3DEG
Operators:LPC
Test Date:2021-12-30

γ Range: 0 - 120DEG
γ Interval: 1.0DEG
Test System:EVERFINE GO-2000B_V1 SYSTEM V2.0.362
Humidity:65.0%
Test Distance:9.200m [K=1.0000]
Remarks:

ISOLUX DIAGRAM

Test:U:24.00V I:0.1909A P:4.582W PF:1.000 Freq:50.00Hz Lamp Flux:25.296x1 lm		
NAME: SF15-24V-5050-56-DMX4SM-RGBW(4000)-R	TYPE: 硅胶	WEIGHT:
SPEC.:	DIM.: 21mm*11.5mm	SERIAL No.:2021123016
MFR.: OLYMPIA	SUR.:1*0.0115	Shielding Angle:



C Range: 0 - 360DEG
C Interval: 30.0DEG
Test Speed: HIGH
Temperature:25.3DEG
Operators:LPC
Test Date:2021-12-30

γ Range: 0 - 120DEG
 γ Interval: 1.0DEG
Test System:EVERFINE GO-2000B_V1 SYSTEM V2.0.362
Humidity:65.0%
Test Distance:9.200m [K=1.0000]
Remarks:

LED Avg.L Report

Test:U:24.00V I:0.1909A P:4.582W PF:1.000 Freq:50.00Hz Lamp Flux:25.296x1 lm		
NAME: SF15-24V-5050-56-DMX4SM-RGBW(4000)-R	TYPE:硅胶	WEIGHT:
SPEC.:	DIM.: 21mm*11.5mm	SERIAL No.:2021123016
MFR.: OLYMPIA	SUR.:1*0.0115	Shielding Angle:

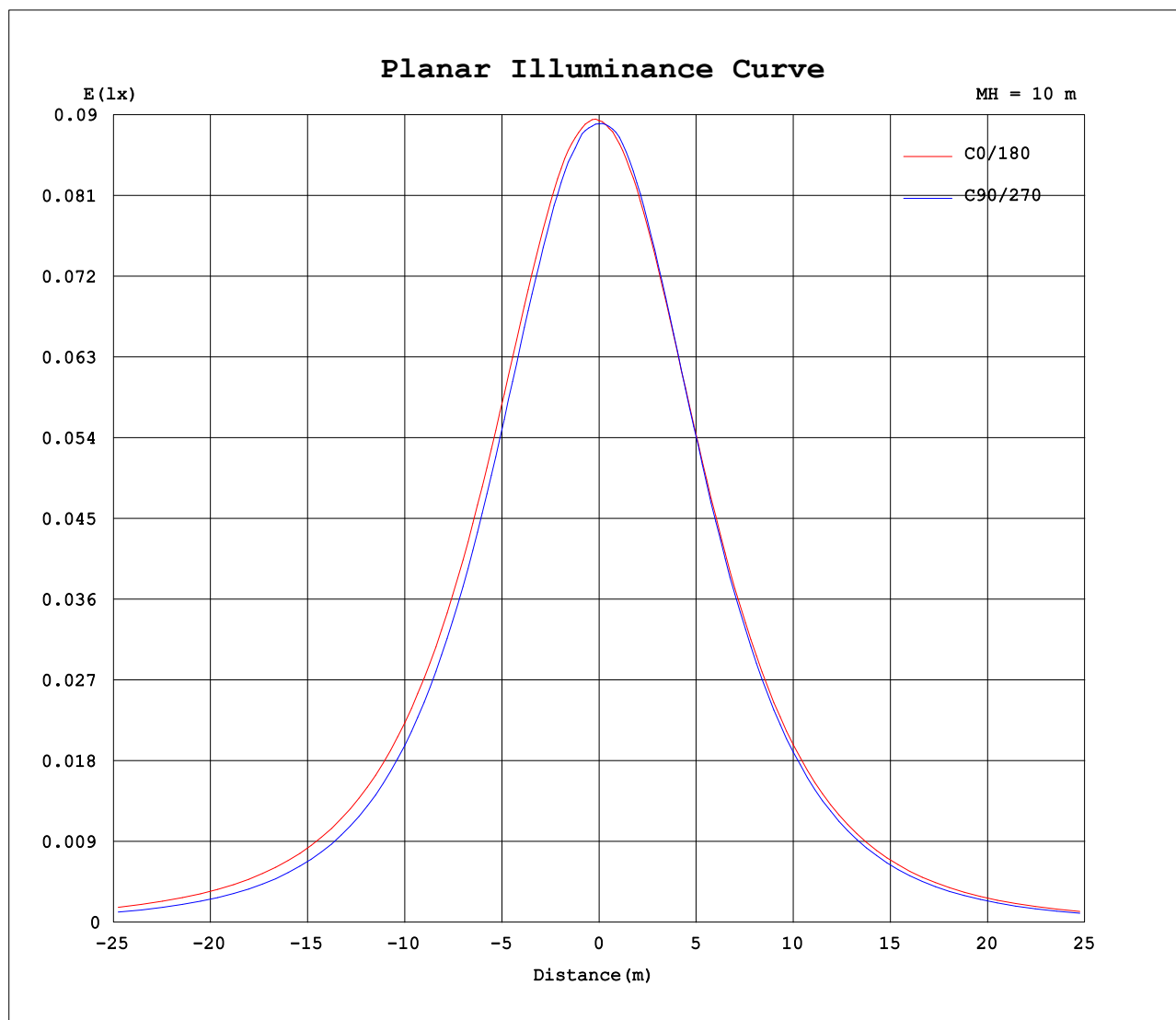
AvgL	cd/m2
L_0~180(65)av	666
L_0~180(75)av	606
L_0~180(85)av	594
L_90~270(65)av	525
L_90~270(75)av	364
L_90~270(85)av	23
L_45(65)av	664
L_45(75)av	600
L_45(85)av	544

Standard: GB/T 29293-2012

C Range: 0 - 360DEG
C Interval: 30.0DEG
Test Speed: HIGH
Temperature:25.3DEG
Operators:LPC
Test Date:2021-12-30

γ Range: 0 - 120DEG
γ Interval: 1.0DEG
Test System:EVERFINE GO-2000B_V1 SYSTEM V2.0.362
Humidity:65.0%
Test Distance:9.200m [K=1.0000]
Remarks:

Planar Illuminance Curve



C Range: 0 - 360DEG
C Interval: 30.0DEG
Test Speed: HIGH
Temperature: 25.3DEG
Operators: LPC
Test Date: 2021-12-30

γ Range: 0 - 120DEG
 γ Interval: 1.0DEG
Test System: EVERFINE GO-2000B_V1 SYSTEM V2.0.362
Humidity: 65.0%
Test Distance: 9.200m [K=1.0000]
Remarks:

LUMINOUS DISTRIBUTION INTENSITY DATA

Test:U:24.00V I:0.1909A P:4.582W PF:1.000 Freq:50.00Hz Lamp Flux:25.296x1 lm		
NAME: SF15-24V-5050-56-DMX4SM-RGBW(4000)-R	TYPE: 硅胶	WEIGHT:
SPEC.:	DIM.: 21mm*11.5mm	SERIAL No.:2021123016
MFR.: OLYMPIA	SUR.:1*0.0115	Shielding Angle:

Table--1

UNIT: cd

C (DEG) γ (DEG)	0	30	60	90	120	150	180	210	240	270	300	330						
0	8.94	8.97	8.91	8.90	8.90	8.89	8.94	8.97	8.91	8.90	8.90	8.89						
5	8.95	8.94	8.90	8.89	8.88	8.81	8.85	8.89	8.83	8.91	8.88	8.89						
10	8.91	8.86	8.87	8.75	8.73	8.64	8.68	8.72	8.71	8.77	8.78	8.87						
15	8.75	8.69	8.67	8.52	8.50	8.40	8.44	8.47	8.42	8.50	8.54	8.69						
20	8.50	8.47	8.38	8.22	8.17	8.09	8.11	8.15	8.09	8.14	8.23	8.41						
25	8.19	8.15	8.02	7.83	7.78	7.71	7.73	7.76	7.70	7.70	7.84	8.09						
30	7.80	7.75	7.58	7.35	7.34	7.26	7.28	7.30	7.25	7.20	7.39	7.72						
35	7.35	7.30	7.10	6.81	6.84	6.75	6.76	6.79	6.75	6.65	6.89	7.27						
40	6.84	6.78	6.59	6.23	6.30	6.20	6.22	6.24	6.23	6.03	6.43	6.77						
45	6.29	6.24	6.03	5.58	5.71	5.58	5.60	5.63	5.63	5.37	5.91	6.23						
50	5.69	5.65	5.42	4.89	5.07	4.93	4.94	4.97	5.00	4.68	5.32	5.65						
55	5.04	5.00	4.78	4.17	4.38	4.24	4.26	4.28	4.33	3.96	4.69	5.00						
60	4.36	4.32	4.11	3.43	3.69	3.54	3.56	3.58	3.64	3.20	4.03	4.32						
65	3.67	3.63	3.42	2.67	2.95	2.80	2.81	2.84	2.90	2.43	3.34	3.64						
70	2.95	2.90	2.70	1.90	2.22	2.06	2.08	2.10	2.16	1.68	2.64	2.92						
75	2.22	2.18	1.98	1.18	1.50	1.37	1.39	1.40	1.45	0.99	1.92	2.19						
80	1.52	1.48	1.29	0.51	0.84	0.75	0.77	0.78	0.78	0.37	1.23	1.49						
85	0.87	0.81	0.66	0.03	0.34	0.32	0.32	0.34	0.26	0.02	0.59	0.84						
90	0.41	0.35	0.22	0.03	0.13	0.12	0.07	0.11	0.04	0.00	0.14	0.37						
95	0.17	0.13	0.10	0.04	0.11	0.09	0.06	0.07	0.04	0.00	0.03	0.14						
100	0.07	0.06	0.09	0.05	0.10	0.09	0.06	0.06	0.04	0.00	0.03	0.04						
105	0.05	0.06	0.08	0.05	0.08	0.09	0.06	0.06	0.04	0.00	0.03	0.04						
110	0.06	0.06	0.08	0.06	0.08	0.09	0.06	0.06	0.05	0.00	0.05	0.04						
115	0.06	0.06	0.08	0.06	0.08	0.09	0.06	0.06	0.06	0.00	0.04	0.04						
120	0.07	0.05	0.08	0.06	0.08	0.09	0.05	0.06	0.06	0.01	0.03	0.06						
125	0.00	0.00	0.00	0.00	0.00	0.00	0.00	0.00	0.00	0.00	0.00	0.00						
130	0.00	0.00	0.00	0.00	0.00	0.00	0.00	0.00	0.00	0.00	0.00	0.00						
135	0.00	0.00	0.00	0.00	0.00	0.00	0.00	0.00	0.00	0.00	0.00	0.00						
140	0.00	0.00	0.00	0.00	0.00	0.00	0.00	0.00	0.00	0.00	0.00	0.00						
145	0.00	0.00	0.00	0.00	0.00	0.00	0.00	0.00	0.00	0.00	0.00	0.00						
150	0.00	0.00	0.00	0.00	0.00	0.00	0.00	0.00	0.00	0.00	0.00	0.00						
155	0.00	0.00	0.00	0.00	0.00	0.00	0.00	0.00	0.00	0.00	0.00	0.00						
160	0.00	0.00	0.00	0.00	0.00	0.00	0.00	0.00	0.00	0.00	0.00	0.00						
165	0.00	0.00	0.00	0.00	0.00	0.00	0.00	0.00	0.00	0.00	0.00	0.00						
170	0.00	0.00	0.00	0.00	0.00	0.00	0.00	0.00	0.00	0.00	0.00	0.00						
175	0.00	0.00	0.00	0.00	0.00	0.00	0.00	0.00	0.00	0.00	0.00	0.00						
180	0.00	0.00	0.00	0.00	0.00	0.00	0.00	0.00	0.00	0.00	0.00	0.00						

C Range: 0 - 360DEG
C Interval: 30.0DEG
Test Speed: HIGH
Temperature:25.3DEG
Operators:LPC
Test Date:2021-12-30

γ Range: 0 - 120DEG
γ Interval: 1.0DEG
Test System:EVERFINE GO-2000B_V1 SYSTEM V2.0.362
Humidity:65.0%
Test Distance:9.200m [K=1.0000]
Remarks:

Photometric Data Table [cd]

G/C	0.0	30.0	60.0	90.0	120.0	150.0	180.0	210.0	240.0	270.0
0.0	8.936	8.966	8.906	8.901	8.896	8.890	8.936	8.966	8.906	8.901
3.0	8.961	8.956	8.911	8.891	8.896	8.845	8.885	8.936	8.880	8.906
6.0	8.949	8.916	8.901	8.855	8.856	8.804	8.820	8.866	8.810	8.896
9.0	8.931	8.880	8.891	8.795	8.770	8.684	8.714	8.755	8.720	8.805
12.0	8.856	8.805	8.805	8.669	8.655	8.558	8.589	8.630	8.588	8.675
15.0	8.745	8.689	8.675	8.523	8.499	8.402	8.443	8.474	8.422	8.499
18.0	8.605	8.558	8.509	8.347	8.308	8.226	8.247	8.288	8.236	8.298
21.0	8.444	8.403	8.318	8.151	8.102	8.020	8.041	8.077	8.010	8.062
24.0	8.258	8.221	8.097	7.905	7.871	7.789	7.819	7.831	7.779	7.796
27.0	8.042	8.000	7.856	7.628	7.620	7.533	7.553	7.580	7.518	7.525
30.0	7.801	7.754	7.585	7.352	7.344	7.261	7.276	7.303	7.246	7.198
33.0	7.540	7.523	7.303	7.030	7.052	6.955	6.980	7.002	6.960	6.871
36.0	7.253	7.191	7.002	6.693	6.735	6.648	6.663	6.690	6.663	6.534
39.0	6.952	6.899	6.700	6.356	6.414	6.311	6.331	6.354	6.341	6.153
42.0	6.640	6.588	6.369	5.980	6.062	5.959	5.974	5.997	5.990	5.776
45.0	6.293	6.236	6.027	5.577	5.710	5.577	5.602	5.630	5.628	5.369
48.0	5.931	5.889	5.670	5.180	5.323	5.200	5.210	5.238	5.260	4.947
51.0	5.560	5.512	5.299	4.748	4.932	4.798	4.813	4.836	4.863	4.530
54.0	5.173	5.135	4.911	4.316	4.520	4.386	4.401	4.434	4.457	4.097
57.0	4.771	4.733	4.514	3.883	4.122	3.974	3.984	4.012	4.064	3.650
60.0	4.364	4.321	4.112	3.426	3.685	3.537	3.557	3.579	3.637	3.203
63.0	3.952	3.913	3.695	2.974	3.253	3.094	3.104	3.138	3.190	2.746
66.0	3.525	3.487	3.278	2.517	2.806	2.657	2.672	2.695	2.758	2.278
69.0	3.092	3.044	2.846	2.054	2.359	2.210	2.225	2.243	2.315	1.831
72.0	2.655	2.607	2.419	1.602	1.927	1.788	1.787	1.816	1.878	1.419
75.0	2.223	2.175	1.982	1.180	1.504	1.371	1.386	1.399	1.451	0.9865
78.0	1.791	1.738	1.569	0.7577	1.092	0.9789	0.9940	1.006	1.034	0.6143
81.0	1.383	1.326	1.127	0.3909	0.7248	0.6424	0.6624	0.6744	0.6571	0.2673
84.0	0.9916	0.9286	0.7704	0.1048	0.4132	0.3862	0.4011	0.4079	0.3457	0.0258
87.0	0.6645	0.5922	0.4434	0.0251	0.2167	0.1957	0.1906	0.2216	0.1201	0.0000
90.0	0.4129	0.3462	0.2217	0.0251	0.1258	0.1154	0.0652	0.1058	0.0352	0
93.0	0.2517	0.1856	0.1209	0.0302	0.1157	0.0905	0.0553	0.0704	0.0352	0
96.0	0.1411	0.0752	0.0905	0.0352	0.1057	0.0905	0.0553	0.0653	0.0352	0
99.0	0.0756	0.0553	0.0905	0.0402	0.0956	0.0905	0.0553	0.0603	0.0352	0
102.0	0.0503	0.0553	0.0954	0.0452	0.0955	0.0905	0.0553	0.0603	0.0352	0
105.0	0.0503	0.0553	0.0754	0.0452	0.0805	0.0905	0.0553	0.0603	0.0402	0
108.0	0.0503	0.0553	0.0754	0.0553	0.0754	0.0905	0.0553	0.0603	0.0453	0
111.0	0.0553	0.0553	0.0754	0.0553	0.0754	0.0905	0.0553	0.0603	0.0553	0
114.0	0.0553	0.0553	0.0754	0.0603	0.0754	0.0905	0.0553	0.0603	0.0603	0
117.0	0.0603	0.0553	0.0754	0.0703	0.0754	0.0905	0.0553	0.0553	0.0603	0
120.0	0.0704	0.0503	0.0754	0.0603	0.0754	0.0854	0.0503	0.0603	0.0603	0.0050
G/C	300.0	330.0								
0.0	8.896	8.890								
3.0	8.895	8.901								
6.0	8.880	8.888								
9.0	8.800	8.875								
12.0	8.689	8.815								
15.0	8.538	8.695								
18.0	8.362	8.544								
21.0	8.161	8.348								
24.0	7.925	8.157								
27.0	7.663	7.951								
30.0	7.387	7.715								
33.0	7.090	7.464								
36.0	6.799	7.178								
39.0	6.532	6.876								
42.0	6.226	6.570								
45.0	5.909	6.233								
48.0	5.557	5.876								
51.0	5.190	5.510								
54.0	4.818	5.138								
57.0	4.421	4.735								
60.0	4.029	4.323								
63.0	3.632	3.926								
66.0	3.200	3.489								
69.0	2.778	3.077								
72.0	2.350	2.640								
75.0	1.919	2.193								
78.0	1.506	1.785								
81.0	1.094	1.363								
84.0	0.7073	0.9664								
87.0	0.3660	0.6292								
90.0	0.1353	0.3676								

C Range: 0 - 360DEG
 C Interval: 30.0DEG
 Test Speed: HIGH
 Temperature: 25.3DEG
 Operators: LPC
 Test Date: 2021-12-30

γ Range: 0 - 120DEG
 γ Interval: 1.0DEG
 Test System: EVERFINE GO-2000B_V1 SYSTEM V2.0.362
 Humidity: 65.0%
 Test Distance: 9.200m [K=1.0000]
 Remarks:

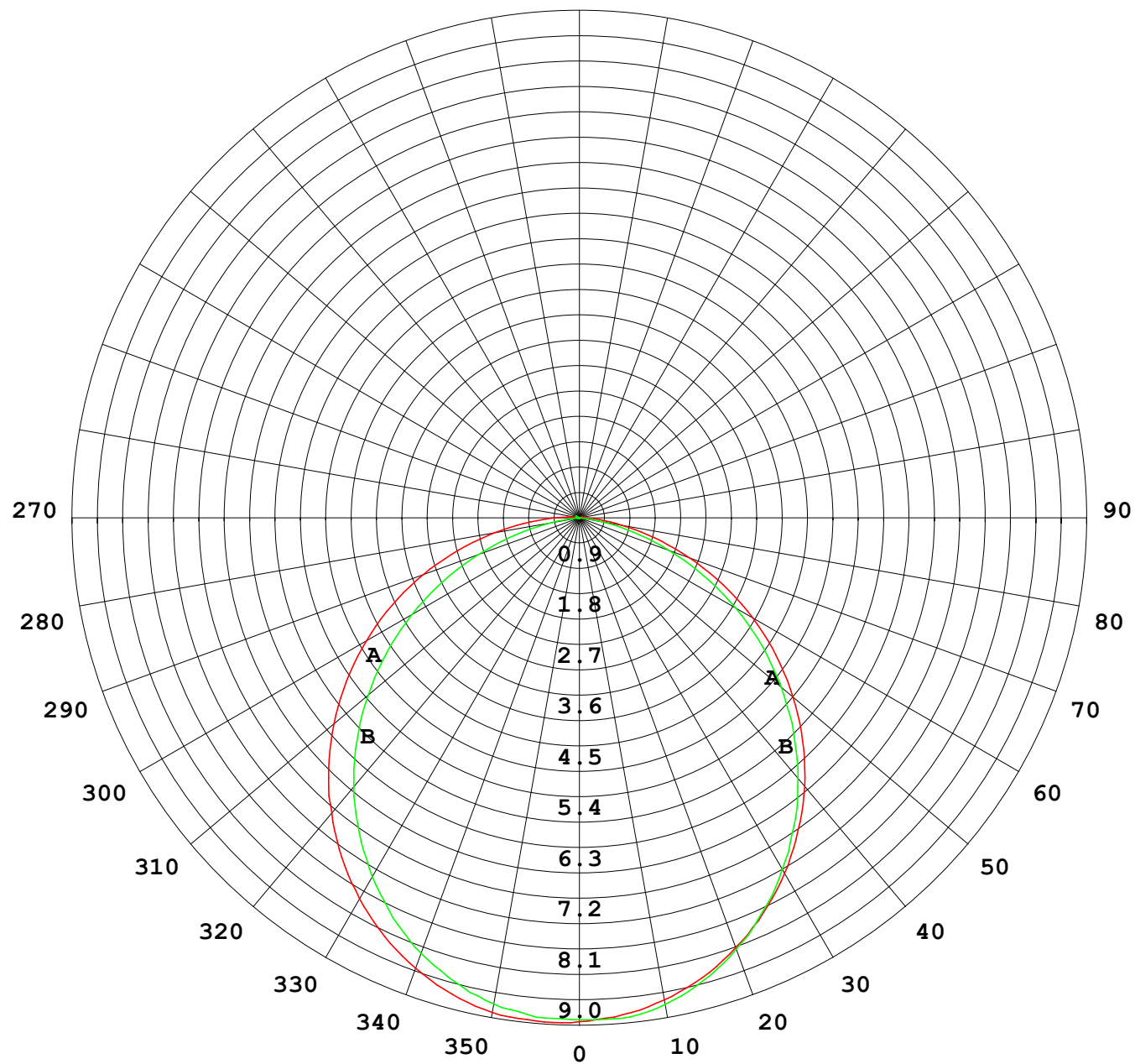
Photometric Data Table [cd]

93.0	0.0650	0.2014
96.0	0.0251	0.1059
99.0	0.0251	0.0504
102.0	0.0251	0.0402
105.0	0.0302	0.0402
108.0	0.0352	0.0402
111.0	0.0503	0.0402
114.0	0.0551	0.0402
117.0	0.0302	0.0503
120.0	0.0251	0.0603

C Range: 0 - 360DEG
C Interval: 30.0DEG
Test Speed: HIGH
Temperature: 25.3DEG
Operators: LPC
Test Date: 2021-12-30

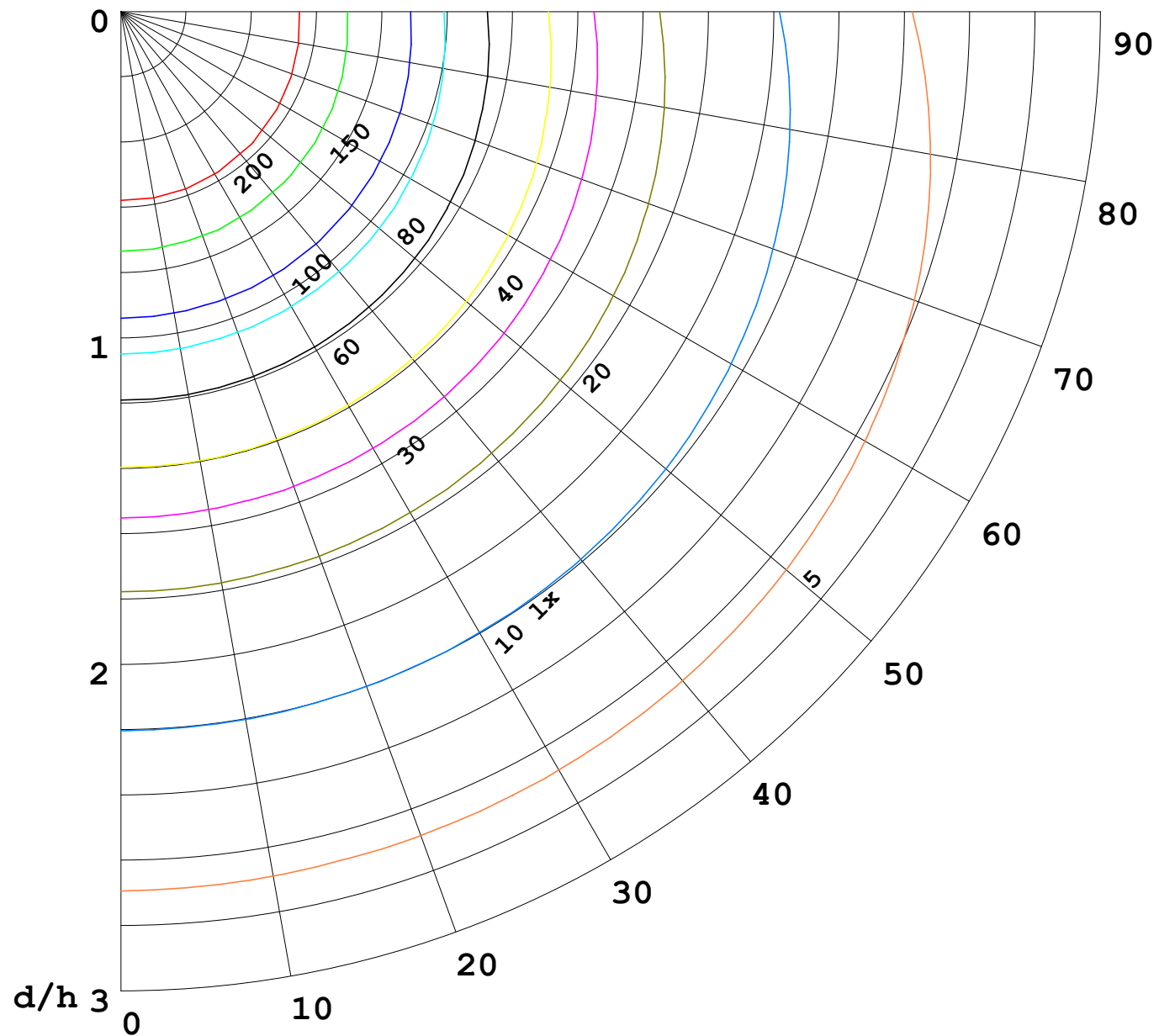
γ Range: 0 - 120DEG
γ Interval: 1.0DEG
Test System: EVERFINE GO-2000B_V1 SYSTEM V2.0.362
Humidity: 65.0%
Test Distance: 9.200m [K=1.0000]
Remarks:

I (cd)



1000 lm

$\kappa = 1$



F = 5000 lm
 K = 0.7
 Hcc = 0.0 m
 Hfc = 0.0 m
 Eave = 100 lx

	Pcc	Pw	Pfc
—	70	50	30
—	50	30	20

