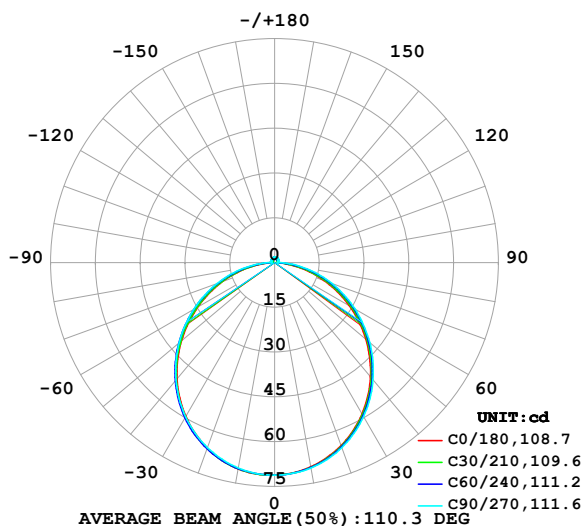


LUMINAIRE PHOTOMETRIC TEST REPORT

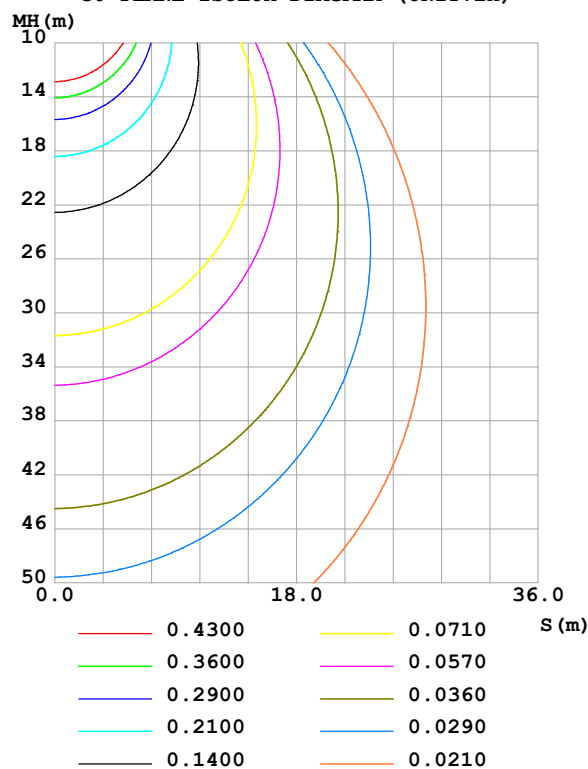
Test:U:24.00V I:0.2409A P:5.782W PF:1.000 Freq:0Hz Lamp Flux:208.902x1 lm		
NAME: SF15-24V-5050-70-DMX-4000K(3)	TYPE:	WEIGHT:
SPEC.:	DIM.: Length=1m	SERIAL No.:
MFR.: OLympia lighting	SUR.:	Shielding Angle:

DATA OF LAMP		PHOTOMETRIC DATA Eff: 36.13 lm/W			
MODEL	5050	Imax (cd)	71.21	S/MH(C0/180)	1.24
NOMINAL POWER(W)		LOR(%)	100.0	S/MH(C90/270)	1.25
RATED VOLTAGE(V)	24	TOTAL FLUX(lm)	208.90	η UP,DN(C0-180)	2.0,47.8
NOMINAL FLUX(lm)	208.902	CIE CLASS	DIRECT	η UP,DN(C180-360)	2.0,48.2
LAMPS INSIDE	1	η up (%)	4.0	CIBSE SHR NOM	1.25
TEST VOLTAGE(V)		η down (%)	96.0	CIBSE SHR MAX	1.35

LUMINOUS INTENSITY DISTRIBUTION DIAGRAM



C0 PLANE ISOLUX DIAGRAM (UNIT:lx)



C Range: 0 - 360DEG
C Interval: 30.0DEG
Test Speed: HIGH
Temperature:25.3℃
Operators:
Test Date:2025-03-05

γ Range: 0 - 180DEG
 γ Interval: 1.0DEG
Test System:EVERFINE GO-2000B_V1 SYSTEM V2.00.488
Humidity:65.0%
Test Distance:6.360m [K=1.0000]
Remarks:

ZONAL FLUX DIAGRAM

ZONAL FLUX DIAGRAM:

γ	C0	C45	C90	C135	C180	C225	C270	C315	γ	Φ zone	Φ total	%lum, lamp
10	69.50	69.69	69.88	70.11	70.18	70.14	69.87	69.68	0- 10	6.734	6.734	3.22,3.22
20	65.18	65.56	65.95	66.19	66.11	66.29	65.92	65.56	10- 20	19.24	25.98	12.4,12.4
30	58.57	59.06	59.61	59.75	59.49	59.91	59.65	59.08	20- 30	28.98	54.96	26.3,26.3
40	49.96	50.63	51.31	51.23	50.86	51.48	51.39	50.68	30- 40	34.65	89.61	42.9,42.9
50	39.87	40.79	41.59	41.19	40.73	41.51	41.75	40.85	40- 50	35.60	125.2	59.9,59.9
60	28.89	30.11	31.05	30.26	29.72	30.63	31.27	30.15	50- 60	31.94	157.1	75.2,75.2
70	17.59	19.10	20.34	19.14	18.47	19.46	20.52	19.11	60- 70	24.48	181.6	86.9,86.9
80	6.801	8.347	10.00	8.488	7.707	8.722	10.09	8.360	70- 80	14.57	196.2	93.9,93.9
90	1.101	1.177	1.019	1.080	0.9278	1.201	1.225	1.219	80- 90	4.386	200.6	96,96
100	1.078	1.144	1.095	1.044	0.9137	1.126	1.236	1.125	90-100	1.195	201.8	96.6,96.6
110	1.167	1.173	1.245	1.174	1.000	1.205	1.331	1.185	100-110	1.205	203.0	97.2,97.2
120	1.282	1.230	1.378	1.315	1.121	1.309	1.409	1.250	110-120	1.225	204.2	97.8,97.8
130	1.392	1.336	1.493	1.435	1.248	1.400	1.467	1.344	120-130	1.197	205.4	98.3,98.3
140	1.473	1.465	1.591	1.543	1.372	1.492	1.525	1.399	130-140	1.108	206.5	98.9,98.9
150	1.513	1.608	1.710	1.650	1.513	1.593	1.620	1.499	140-150	0.9623	207.5	99.3,99.3
160	1.692	1.719	1.799	1.748	1.663	1.701	1.715	1.639	150-160	0.7623	208.2	99.7,99.7
170	1.732	1.814	1.845	1.828	1.712	1.801	1.802	1.786	160-170	0.4958	208.7	99.9,99.9
180	1.764	1.853	1.868	1.861	1.761	1.853	1.868	1.859	170-180	0.1734	208.9	100,100
DEG	LUMINOUS INTENSITY:cd									UNIT:lm		

Conical surface Flux(90deg): 107.59 lm

%lum = 51.5%

%lamp = 51.5%

Conical surface Flux(130deg): 170.51 lm

%lum = 81.6%

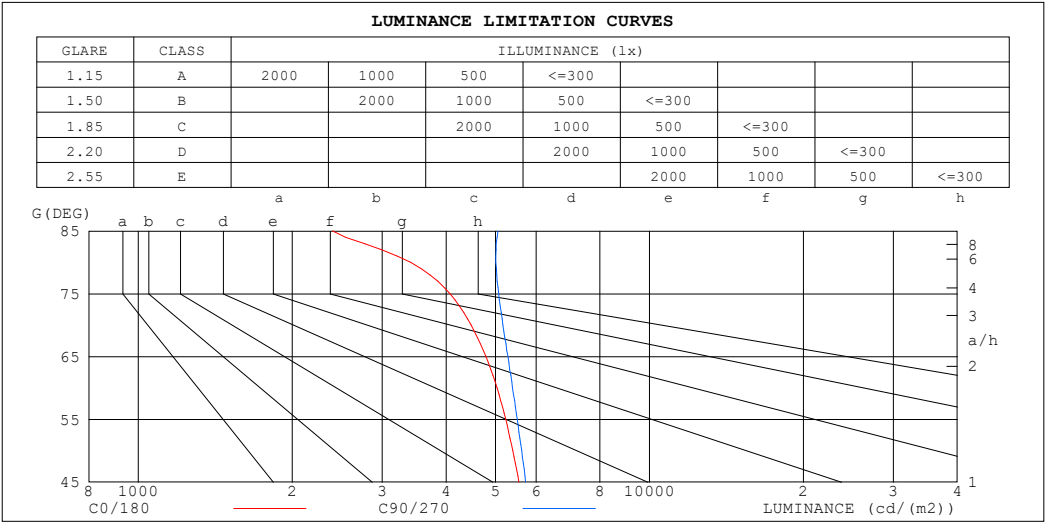
%lamp = 81.6%

C Range: 0 - 360DEG
 C Interval: 30.0DEG
 Test Speed: HIGH
 Temperature:25.3℃
 Operators:
 Test Date:2025-03-05

γ Range: 0 - 180DEG
 γ Interval: 1.0DEG
 Test System:EVERFINE GO-2000B_V1 SYSTEM V2.00.488
 Humidity:65.0%
 Test Distance:6.360m [K=1.0000]
 Remarks:

LUMINANCE LIMITATION CURVES

Test:U:24.00V I:0.2409A P:5.782W PF:1.000 Freq:0Hz Lamp Flux:208.902x1 lm		
NAME: SF15-24V-5050-70-DMX-4000K(3)	TYPE:	WEIGHT:
SPEC.:	DIM.: Length=1m	SERIAL No.:
MFR.: OLympia lighting	SUR.:	Shielding Angle:



LUMINANCE cd/(m2)		
G (DEG)	C0/180	C90/270
85	2398	5056
80	3411	5007
75	4072	5072
70	4478	5169
65	4786	5282
60	5032	5398
55	5231	5509
50	5402	5623
45	5551	5725

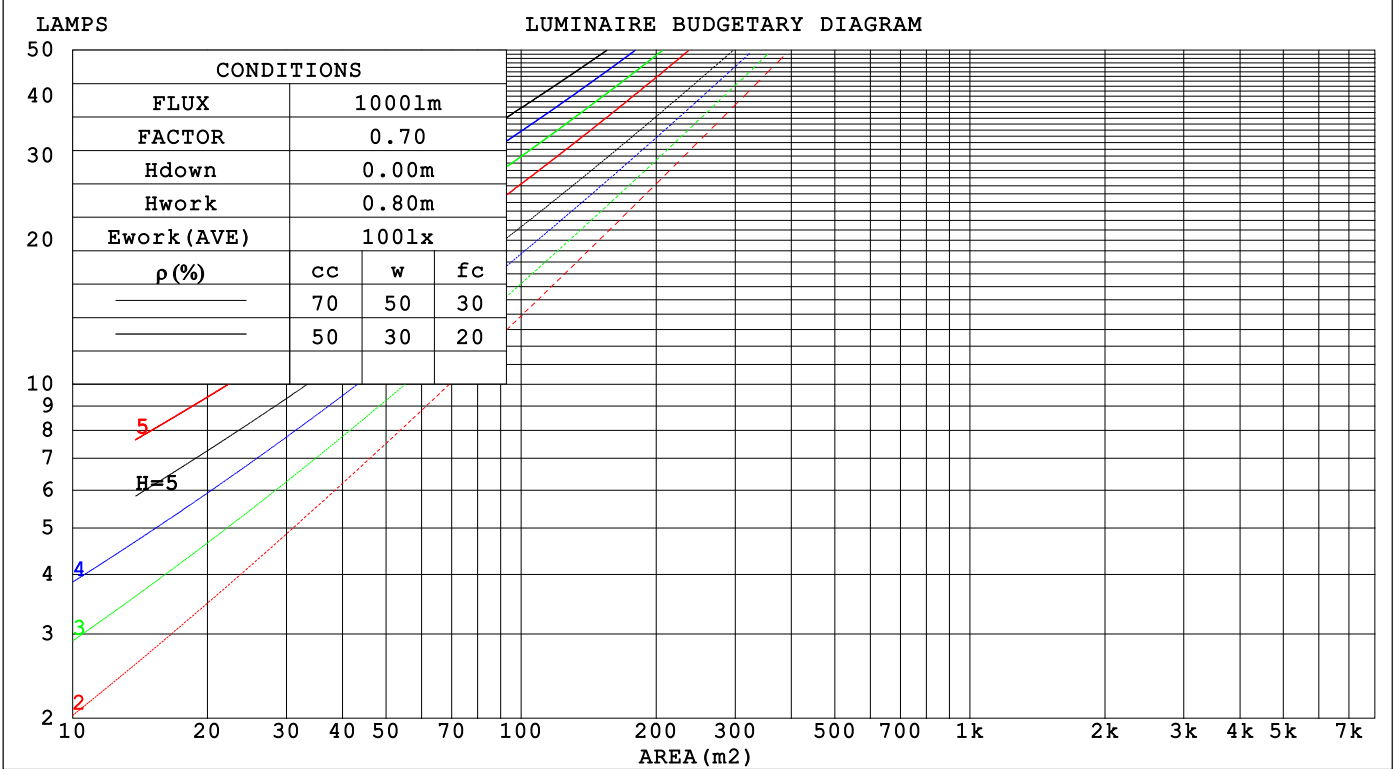
C Range: 0 - 360DEG
C Interval: 30.0DEG
Test Speed: HIGH
Temperature:25.3℃
Operators:
Test Date:2025-03-05

γ Range: 0 - 180DEG
γ Interval: 1.0DEG
Test System:EVERFINE GO-2000B_V1 SYSTEM V2.00.488
Humidity:65.0%
Test Distance:6.360m [K=1.0000]
Remarks:

CU AND LUMINAIRE BUDGETARY ESTIMATE DIAGRAM

Test:U:24.00V I:0.2409A P:5.782W PF:1.000 Freq:0Hz		
Lamp Flux:208.902x1 lm		
NAME: SF15-24V-5050-70-DMX-4000K(3)	TYPE:	WEIGHT:
SPEC.:	DIM.: Length=1m	SERIAL No.:
MFR.: OLYMPIA lighting	SUR.:	Shielding Angle:

pcc	80%			70%			50%			30%			10%			0
pw	50%	30%	10%	50%	30%	10%	50%	30%	10%	50%	30%	10%	50%	30%	10%	0
pfc	20%			20%			20%			20%			20%			0
RCR	RCR:Room Cavity Ratio															
	Coefficients of Utilization(CU)															
0.0	1.18	1.18	1.18	1.15	1.15	1.15	1.09	1.09	1.09	1.03	1.03	1.03	.98	.98	.98	.96
1.0	1.03	.99	.95	1.00	.96	.93	.95	.92	.89	.91	.88	.86	.86	.84	.82	.80
2.0	.90	.83	.77	.87	.81	.76	.83	.78	.73	.79	.75	.71	.76	.72	.69	.66
3.0	.79	.70	.64	.77	.69	.63	.73	.67	.61	.70	.64	.60	.67	.62	.58	.56
4.0	.70	.61	.54	.68	.60	.53	.65	.58	.52	.62	.56	.51	.60	.54	.50	.48
5.0	.62	.53	.46	.61	.52	.46	.58	.51	.45	.56	.49	.44	.54	.48	.43	.41
6.0	.56	.47	.41	.55	.46	.40	.53	.45	.40	.50	.44	.39	.49	.43	.38	.36
7.0	.51	.42	.36	.50	.41	.36	.48	.40	.35	.46	.39	.34	.44	.38	.34	.32
8.0	.46	.38	.32	.45	.37	.32	.44	.36	.31	.42	.36	.31	.41	.35	.30	.28
9.0	.42	.34	.29	.42	.34	.28	.40	.33	.28	.39	.32	.28	.38	.32	.27	.26
10.0	.39	.31	.26	.38	.31	.26	.37	.30	.26	.36	.30	.25	.35	.29	.25	.23



C Range: 0 - 360DEG
C Interval: 30.0DEG
Test Speed: HIGH
Temperature:25.3℃
Operators:
Test Date:2025-03-05

γ Range: 0 - 180DEG
γ Interval: 1.0DEG
Test System:EVERFINE GO-2000B_V1 SYSTEM V2.00.488
Humidity:65.0%
Test Distance:6.360m [K=1.0000]
Remarks:

WEC AND CCEC

Test:U:24.00V I:0.2409A P:5.782W PF:1.000 Freq:0Hz Lamp Flux:208.902x1 lm		
NAME: SF15-24V-5050-70-DMX-4000K(3)	TYPE:	WEIGHT:
SPEC.:	DIM.: Length=1m	SERIAL No.:
MFR.: OLympia lighting	SUR.:	Shielding Angle:

pcc	80%			70%			50%			30%			10%			0														
pw	50%	30%	10%	50%	30%	10%	50%	30%	10%	50%	30%	10%	50%	30%	10%	0														
pfc	20%			20%			20%			20%			20%			0														
RCR	RCR:Room Cavity Ratio															Wall Exitance Coefficients(WEC)														
0.0																														
1.0	.311	.177	.056	.303	.173	.055	.287	.165	.053	.273	.158	.051	.260	.151	.049															
2.0	.291	.160	.049	.284	.156	.048	.270	.150	.047	.257	.144	.045	.246	.139	.044															
3.0	.269	.143	.043	.262	.141	.042	.250	.136	.041	.239	.131	.040	.228	.126	.039															
4.0	.248	.129	.038	.242	.127	.037	.231	.123	.037	.221	.119	.036	.211	.115	.035															
5.0	.229	.117	.034	.224	.115	.033	.214	.111	.033	.205	.108	.032	.196	.105	.032															
6.0	.212	.106	.030	.208	.105	.030	.199	.102	.030	.191	.099	.029	.183	.096	.029															
7.0	.198	.098	.028	.193	.096	.027	.185	.094	.027	.178	.091	.027	.171	.089	.026															
8.0	.184	.090	.025	.181	.089	.025	.173	.087	.025	.167	.084	.024	.160	.082	.024															
9.0	.173	.084	.023	.169	.083	.023	.163	.081	.023	.157	.079	.022	.151	.077	.022															
10.0	.162	.078	.022	.159	.077	.021	.153	.075	.021	.148	.073	.021	.143	.072	.021															

pcc	80%			70%			50%			30%			10%			0
pw	50%	30%	10%	50%	30%	10%	50%	30%	10%	50%	30%	10%	50%	30%	10%	0
pfc	20%			20%			20%			20%			20%			0
RCR	RCR:Room Cavity Ratio						Ceiling Cavity Exitance Coefficients (CCEC)									
0.0	.221	.221	.221	.189	.189	.189	.129	.129	.129	.074	.074	.074	.024	.024	.024	
1.0	.211	.187	.165	.181	.160	.142	.123	.110	.098	.071	.064	.057	.023	.021	.018	
2.0	.203	.163	.129	.174	.140	.111	.119	.097	.078	.069	.056	.046	.022	.018	.015	
3.0	.195	.145	.105	.167	.125	.091	.115	.087	.064	.066	.051	.038	.021	.017	.012	
4.0	.188	.132	.090	.161	.114	.078	.111	.080	.055	.064	.047	.032	.021	.015	.011	
5.0	.180	.122	.079	.155	.105	.068	.107	.074	.048	.062	.043	.029	.020	.014	.009	
6.0	.173	.113	.071	.149	.098	.062	.103	.069	.044	.060	.040	.026	.019	.013	.009	
7.0	.166	.107	.065	.143	.092	.056	.099	.065	.040	.057	.038	.024	.019	.012	.008	
8.0	.160	.101	.060	.138	.087	.053	.095	.061	.037	.055	.036	.022	.018	.012	.007	
9.0	.154	.096	.057	.133	.083	.050	.092	.059	.035	.053	.035	.021	.017	.011	.007	
10.0	.148	.092	.054	.128	.080	.047	.089	.056	.034	.052	.033	.020	.017	.011	.007	

C Range: 0 - 360DEG
C Interval: 30.0DEG
Test Speed: HIGH
Temperature:25.3℃
Operators:
Test Date:2025-03-05

γ Range: 0 - 180DEG
γ Interval: 1.0DEG
Test System:EVERFINE GO-2000B_V1 SYSTEM V2.00.488
Humidity:65.0%
Test Distance:6.360m [K=1.0000]
Remarks:

UGR(Unified Glare Rating) Table

Test:U:24.00V I:0.2409A P:5.782W PF:1.000 Freq:0Hz Lamp Flux:208.902x1 lm										
NAME: SF15-24V-5050-70-DMX-4000K(3)					TYPE:			WEIGHT:		
SPEC.:					DIM.: Length=1m			SERIAL No.:		
MFR.: OLympia lighting					SUR.:			Shielding Angle:		
ceiling/cavity	0.7	0.7	0.5	0.5	0.3	0.7	0.7	0.5	0.5	0.3
walls	0.5	0.3	0.5	0.3	0.3	0.5	0.3	0.5	0.3	0.3
working plane	0.2	0.2	0.2	0.2	0.2	0.2	0.2	0.2	0.2	0.2
Room dimensions	Viewed crosswise					Viewed endwise				
x = 2H y = 2H	23.6	25.1	23.9	25.3	25.6	23.9	25.3	24.2	25.6	25.9
3H	25.0	26.4	25.4	26.7	27.0	25.5	26.8	25.8	27.1	27.4
4H	25.6	26.9	26.0	27.2	27.5	26.2	27.5	26.5	27.8	28.1
6H	26.0	27.2	26.3	27.5	27.9	26.7	28.0	27.1	28.3	28.7
8H	26.0	27.2	26.4	27.6	27.9	27.0	28.1	27.4	28.5	28.9
12H	26.1	27.2	26.5	27.5	27.9	27.1	28.2	27.5	28.6	29.0
4H 2H	24.2	25.5	24.6	25.8	26.2	24.4	25.7	24.8	26.0	26.4
3H	25.9	27.0	26.3	27.3	27.7	26.2	27.4	26.7	27.7	28.1
4H	26.5	27.6	27.0	27.9	28.4	27.1	28.1	27.5	28.5	28.9
6H	27.0	27.9	27.5	28.3	28.8	27.8	28.7	28.2	29.1	29.6
8H	27.1	28.0	27.6	28.4	28.9	28.1	28.9	28.5	29.3	29.8
12H	27.2	28.0	27.7	28.4	28.9	28.3	29.1	28.8	29.5	30.0
8H 4H	26.8	27.7	27.3	28.1	28.6	27.3	28.2	27.8	28.6	29.1
6H	27.5	28.2	28.0	28.6	29.1	28.2	28.9	28.7	29.4	29.9
8H	27.7	28.3	28.2	28.8	29.3	28.6	29.2	29.1	29.7	30.2
12H	27.8	28.3	28.3	28.8	29.4	28.9	29.4	29.4	29.9	30.5
12H 4H	26.9	27.6	27.3	28.1	28.6	27.3	28.1	27.8	28.5	29.0
6H	27.5	28.2	28.1	28.6	29.2	28.2	28.9	28.8	29.3	29.9
8H	27.8	28.3	28.3	28.8	29.4	28.6	29.2	29.2	29.7	30.3
Variations with the observer position at spacings(CIE Pub.117):										
S = 1.0H	+ 0.2 / - 0.2					+ 0.1 / - 0.2				
1.5H	+ 0.2 / - 0.3					+ 0.2 / - 0.3				
2.0H	+ 0.2 / - 0.3					+ 0.1 / - 0.2				

CIE Pub.117, 208.9 lm Total Lamp Luminous Flux Correct (8log(F/F0) = -5.4)
Area: 0.0115 m2

C Range: 0 - 360DEG
C Interval: 30.0DEG
Test Speed: HIGH
Temperature:25.3℃
Operators:
Test Date:2025-03-05

γ Range: 0 - 180DEG
γ Interval: 1.0DEG
Test System:EVERFINE GO-2000B_V1 SYSTEM V2.00.488
Humidity:65.0%
Test Distance:6.360m [K=1.0000]
Remarks:

UTILIZATION FACTORS TABLE

Test:U:24.00V I:0.2409A P:5.782W PF:1.000 Freq:0Hz Lamp Flux:208.902x1 lm		
NAME: SF15-24V-5050-70-DMX-4000K(3)	TYPE:	WEIGHT:
SPEC.:	DIM.: Length=1m	SERIAL No.:
MFR.: OLympia lighting	SUR.:	Shielding Angle:

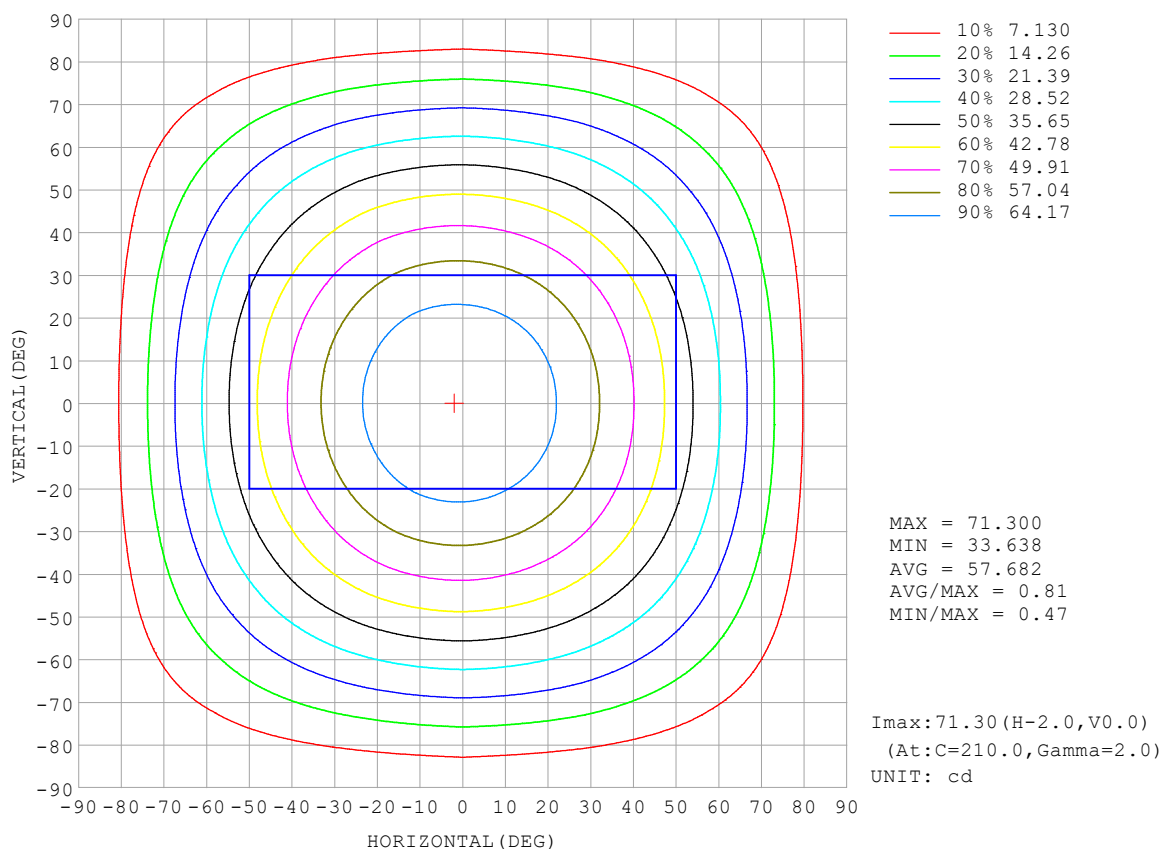
REFLECTANCE										
Ceiling	0.8	0.8	0.8	0.7	0.7	0.7	0.5	0.5	0.5	0
Walls	0.7	0.5	0.3	0.7	0.5	0.3	0.7	0.5	0.3	0
Working plane	0.2	0.2	0.2	0.2	0.2	0.2	0.2	0.2	0.2	0
ROOM INDEX	UTILIZATION FACTORS (PERCENT) $k(RI) \times RCR = 5$									
$k = 0.60$	56	45	38	56	45	38	54	44	38	31
0.80	66	55	47	65	54	47	63	53	47	39
1.00	75	63	56	73	63	56	71	64	55	48
1.25	82	71	64	80	70	63	77	68	62	54
1.50	87	77	70	85	76	69	81	73	68	59
2.00	94	85	78	91	83	77	87	81	75	67
2.50	98	90	83	95	88	82	91	85	80	71
3.00	101	94	88	98	92	87	94	89	84	75
4.00	105	99	94	102	97	93	97	93	89	79
5.00	107	102	98	105	100	96	99	96	93	82
ROOM INDEX	UF (total)									Direct
According to DIN EN 13032-2 2004			Suspended					SHRNOM = 1.25		

C Range: 0 - 360DEG
 C Interval: 30.0DEG
 Test Speed: HIGH
 Temperature: 25.3 °C
 Operators:
 Test Date: 2025-03-05

γ Range: 0 - 180DEG
 γ Interval: 1.0DEG
 Test System: EVERFINE GO-2000B_V1 SYSTEM V2.00.488
 Humidity: 65.0%
 Test Distance: 6.360m [K=1.0000]
 Remarks:

ISOCANDELA DIAGRAM

Test:U:24.00V I:0.2409A P:5.782W PF:1.000 Freq:0Hz Lamp Flux:208.902x1 lm		
NAME: SF15-24V-5050-70-DMX-4000K(3)	TYPE:	WEIGHT:
SPEC.:	DIM.: Length=1m	SERIAL No.:
MFR.: OLympia lighting	SUR.:	Shielding Angle:

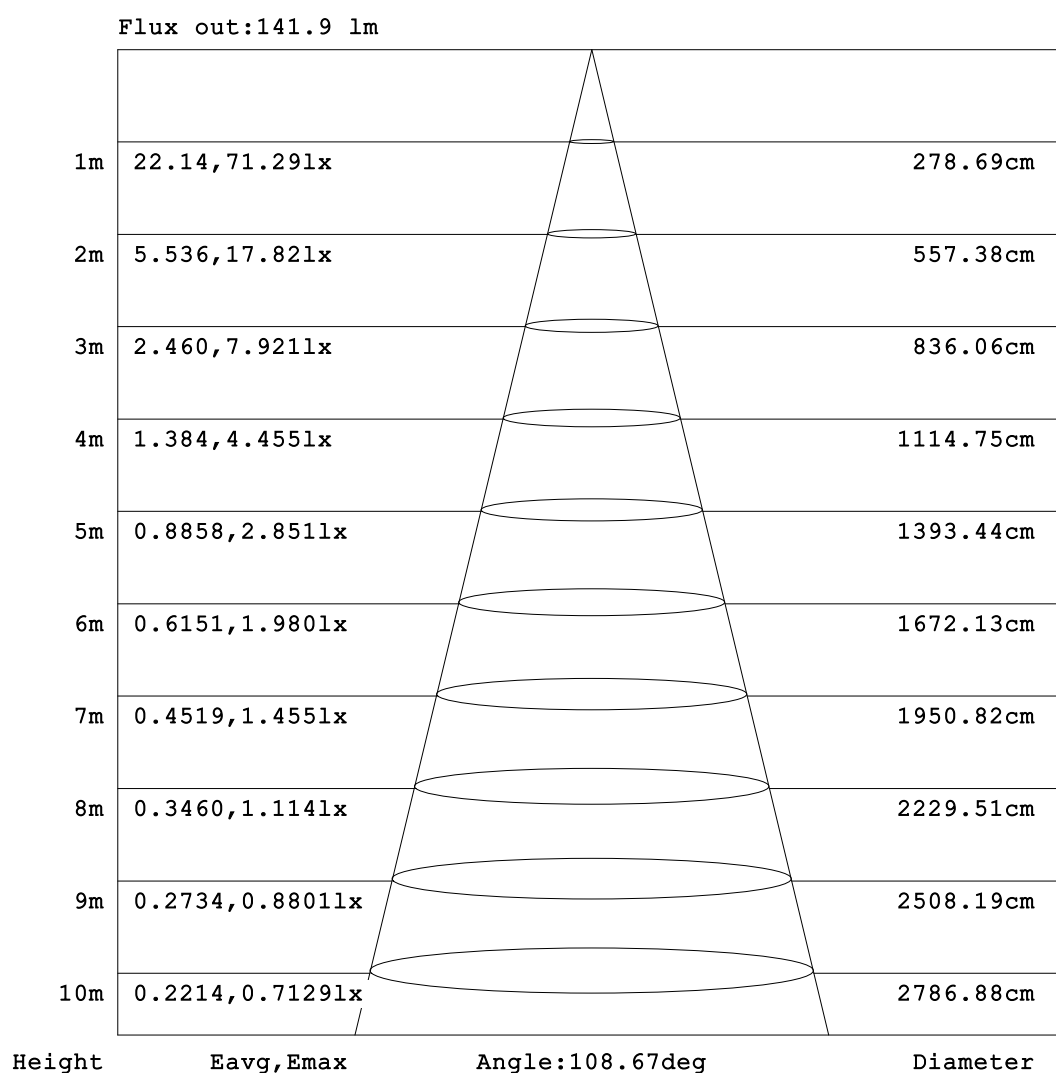


C Range: 0 - 360DEG
C Interval: 30.0DEG
Test Speed: HIGH
Temperature: 25.3°C
Operators:
Test Date: 2025-03-05

γ Range: 0 - 180DEG
γ Interval: 1.0DEG
Test System: EVERFINE GO-2000B_V1 SYSTEM V2.00.488
Humidity: 65.0%
Test Distance: 6.360m [K=1.0000]
Remarks:

AAI Figure

Test:U:24.00V I:0.2409A P:5.782W PF:1.000 Freq:0Hz Lamp Flux:208.902x1 lm		
NAME: SF15-24V-5050-70-DMX-4000K(3)	TYPE:	WEIGHT:
SPEC.:	DIM.: Length=1m	SERIAL No.:
MFR.: OLympia lighting	SUR.:	Shielding Angle:



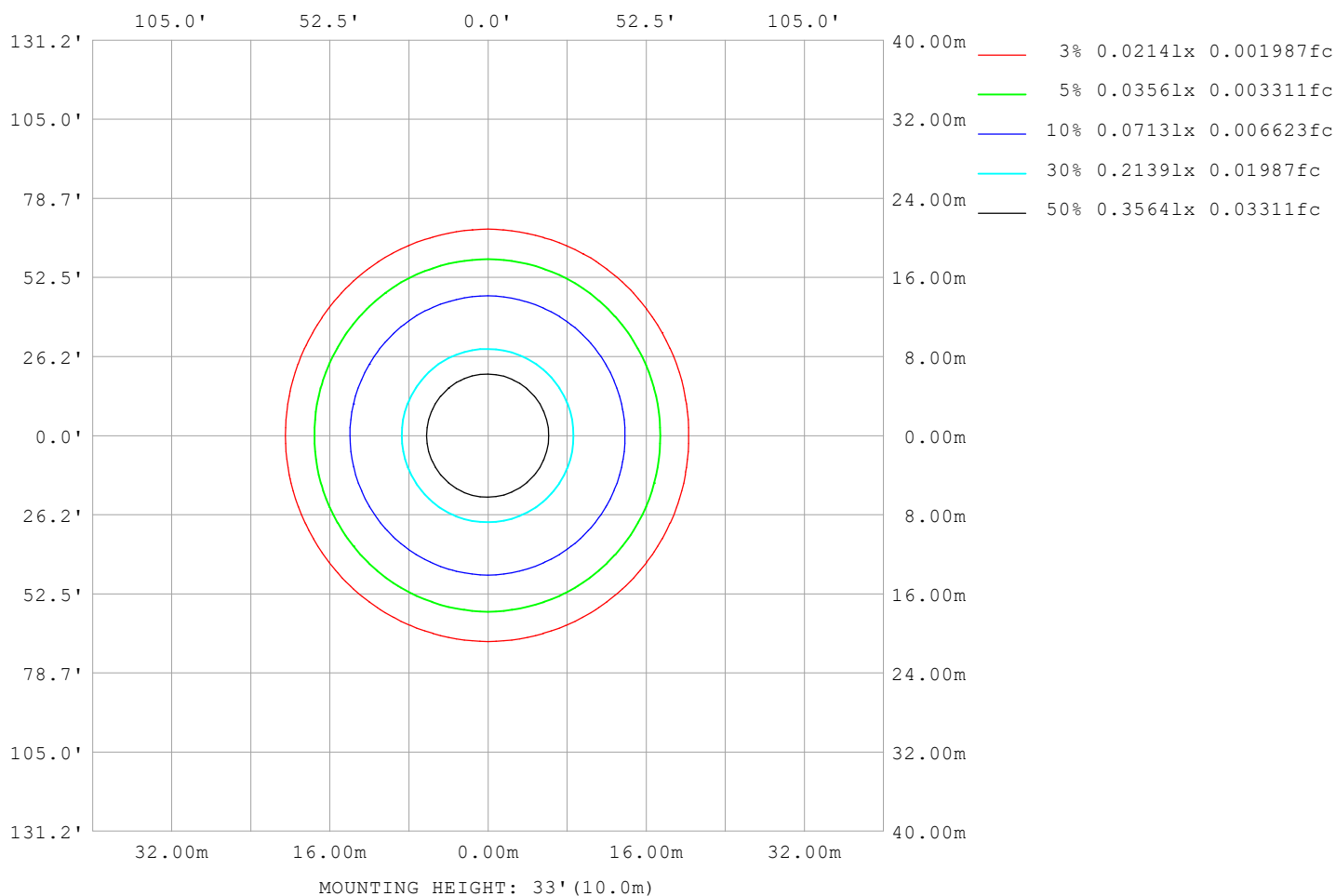
Note:The Curves indicate the illuminated area and the average illumination when the luminaire is at different distance.

C Range: 0 - 360DEG
C Interval: 30.0DEG
Test Speed: HIGH
Temperature:25.3℃
Operators:
Test Date:2025-03-05

γ Range: 0 - 180DEG
γ Interval: 1.0DEG
Test System:EVERFINE GO-2000B_V1 SYSTEM V2.00.488
Humidity:65.0%
Test Distance:6.360m [K=1.0000]
Remarks:

ISOLUX DIAGRAM

Test:U:24.00V I:0.2409A P:5.782W PF:1.000 Freq:0Hz Lamp Flux:208.902x1 lm		
NAME: SF15-24V-5050-70-DMX-4000K(3)	TYPE:	WEIGHT:
SPEC.:	DIM.: Length=1m	SERIAL No.:
MFR.: OLympia lighting	SUR.:	Shielding Angle:



C Range: 0 - 360DEG
C Interval: 30.0DEG
Test Speed: HIGH
Temperature: 25.3°C
Operators:
Test Date: 2025-03-05

γ Range: 0 - 180DEG
γ Interval: 1.0DEG
Test System: EVERFINE GO-2000B_V1 SYSTEM V2.00.488
Humidity: 65.0%
Test Distance: 6.360m [K=1.0000]
Remarks:

LED Avg.L Report

Test:U:24.00V I:0.2409A P:5.782W PF:1.000 Freq:0Hz Lamp Flux:208.902x1 lm		
NAME: SF15-24V-5050-70-DMX-4000K(3)	TYPE:	WEIGHT:
SPEC.:	DIM.: Length=1m	SERIAL No.:
MFR.: OLympia lighting	SUR.:	Shielding Angle:

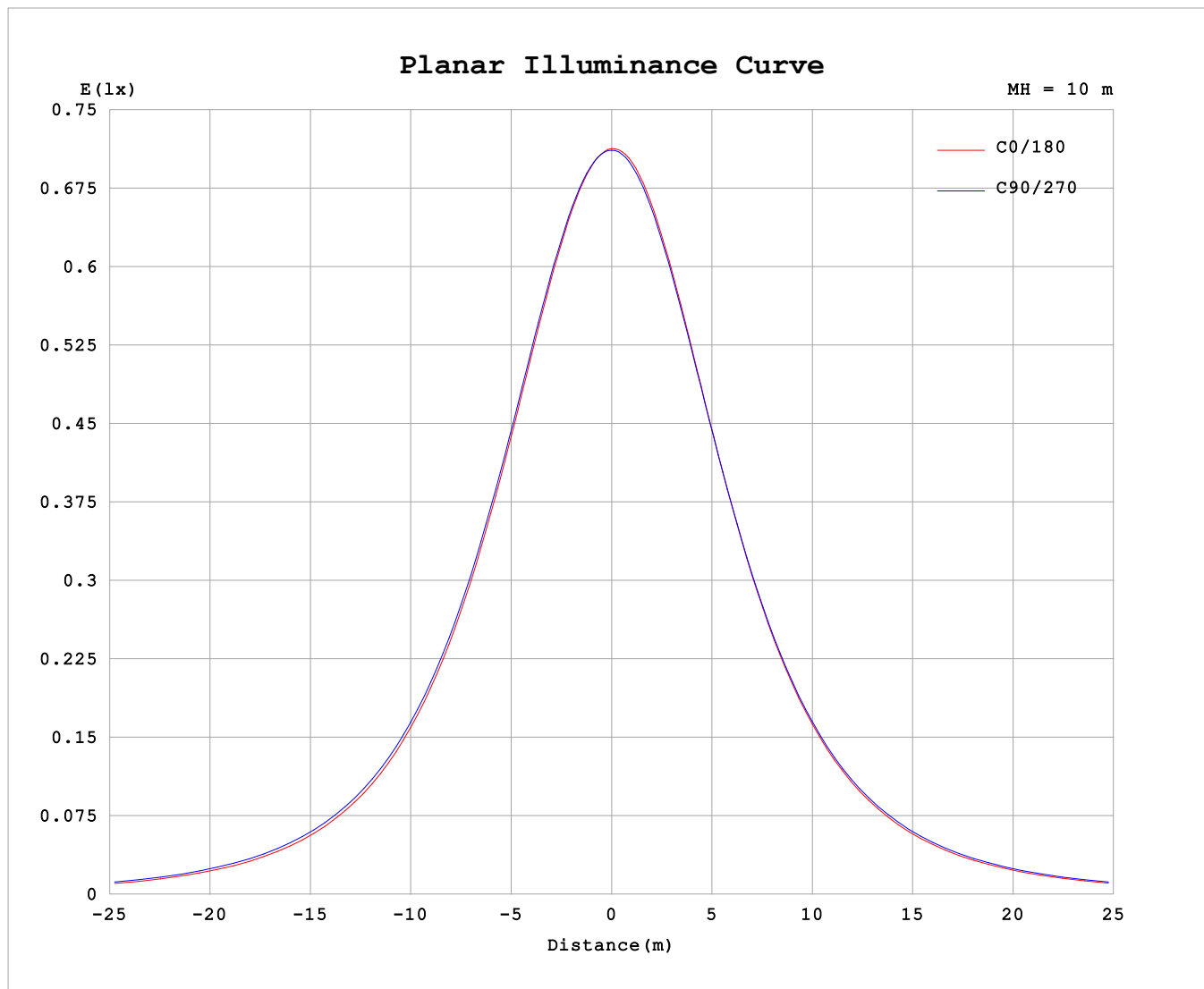
AvgL	cd/m2
L_0~180 (65) av	4867
L_0~180 (75) av	4213
L_0~180 (85) av	2594
L_90~270 (65) av	5305
L_90~270 (75) av	5097
L_90~270 (85) av	5094
L_45 (65) av	5093
L_45 (75) av	4617
L_45 (85) av	3483

Standard: GB/T 29293-2012

C Range: 0 - 360DEG
C Interval: 30.0DEG
Test Speed: HIGH
Temperature:25.3℃
Operators:
Test Date:2025-03-05

γ Range: 0 - 180DEG
γ Interval: 1.0DEG
Test System:EVERFINE GO-2000B_V1 SYSTEM V2.00.488
Humidity:65.0%
Test Distance:6.360m [K=1.0000]
Remarks:

Planar Illuminance Curve



C Range: 0 - 360DEG
C Interval: 30.0DEG
Test Speed: HIGH
Temperature: 25.3 °C
Operators:
Test Date: 2025-03-05

γ Range: 0 - 180DEG
 γ Interval: 1.0DEG
Test System: EVERFINE GO-2000B_V1 SYSTEM V2.00.488
Humidity: 65.0%
Test Distance: 6.360m [K=1.0000]
Remarks:

LUMINOUS DISTRIBUTION INTENSITY DATA

Test:U:24.00V I:0.2409A P:5.782W PF:1.000 Freq:0Hz Lamp Flux:208.902x1 lm		
NAME: SF15-24V-5050-70-DMX-4000K(3)	TYPE:	WEIGHT:
SPEC.:	DIM.: Length=1m	SERIAL No.:
MFR.: Olym pia lighting	SUR.:	Shielding Angle:

Table--1

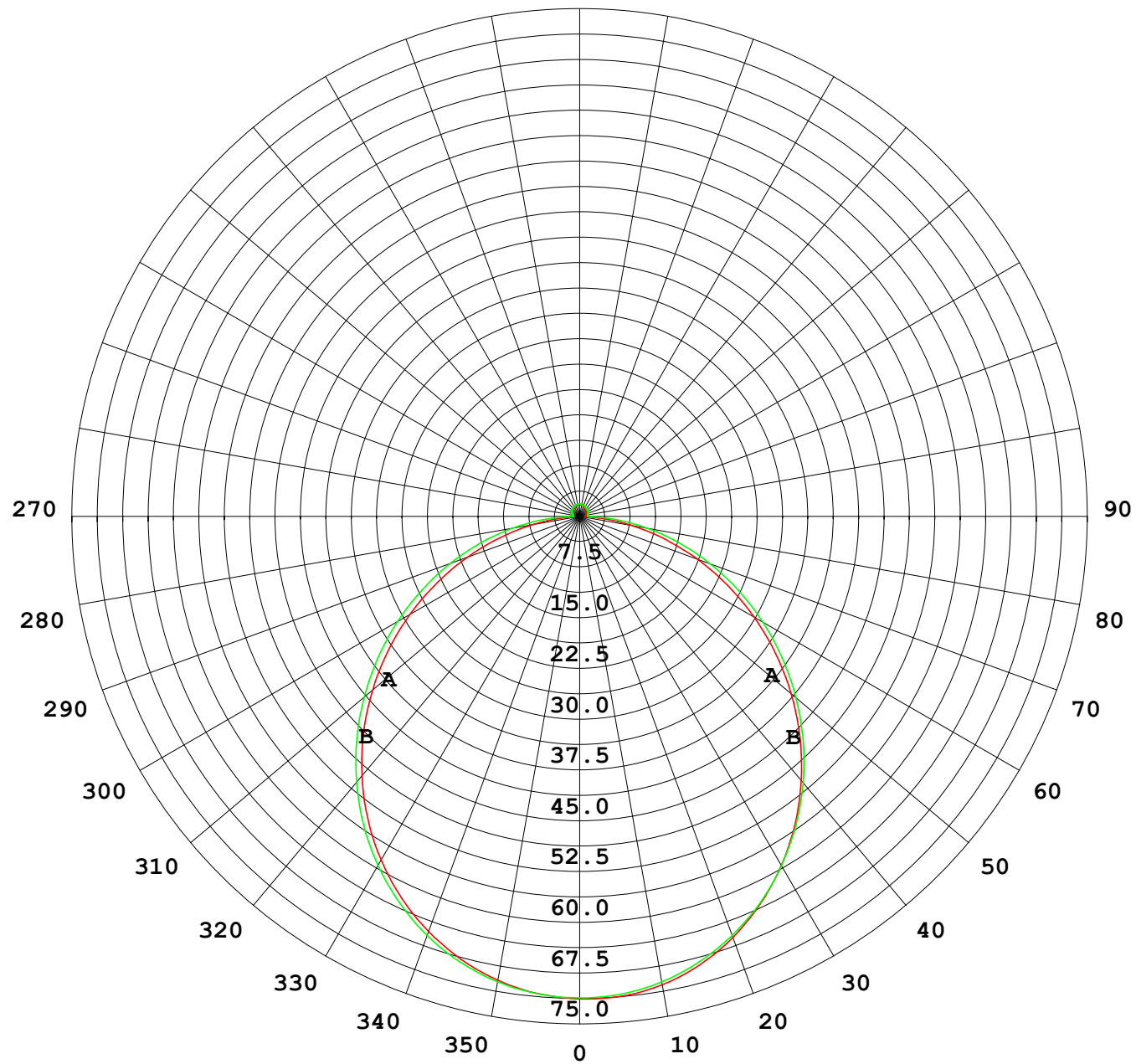
UNIT: cd

C (DEG) γ (DEG)	0	30	60	90	120	150	180	210	240	270	300	330							
0	71.2	71.2	71.2	71.2	71.2	71.2	71.2	71.2	71.2	71.2	71.2	71.2							
5	70.7	70.7	70.8	70.9	71.0	71.0	71.1	71.1	71.0	70.9	70.8	70.7							
10	69.5	69.7	69.7	69.9	70.1	70.1	70.2	70.2	70.1	69.9	69.7	69.6							
15	67.7	67.9	68.0	68.2	68.5	68.5	68.5	68.6	68.6	68.2	68.0	67.8							
20	65.2	65.5	65.7	65.9	66.2	66.2	66.1	66.2	66.3	65.9	65.7	65.4							
25	62.2	62.4	62.7	63.0	63.4	63.2	63.1	63.3	63.5	63.1	62.8	62.4							
30	58.6	58.9	59.2	59.6	59.9	59.6	59.5	59.7	60.1	59.7	59.3	58.9							
35	54.5	54.9	55.3	55.7	55.9	55.5	55.4	55.7	56.2	55.7	55.3	54.8							
40	50.0	50.4	50.9	51.3	51.5	51.0	50.9	51.2	51.8	51.4	51.0	50.4							
45	45.1	45.6	46.1	46.6	46.6	46.1	46.0	46.3	47.0	46.7	46.3	45.5							
50	39.9	40.5	41.1	41.6	41.5	40.9	40.7	41.1	41.9	41.7	41.3	40.4							
55	34.5	35.1	35.9	36.4	36.2	35.4	35.3	35.7	36.6	36.6	36.1	35.1							
60	28.9	29.7	30.6	31.1	30.7	29.9	29.7	30.1	31.1	31.3	30.7	29.6							
65	23.2	24.1	25.2	25.7	25.1	24.2	24.1	24.5	25.6	25.9	25.3	24.0							
70	17.6	18.4	19.8	20.3	19.6	18.7	18.5	18.9	20.1	20.5	19.9	18.4							
75	12.1	12.9	14.4	15.1	14.2	13.2	13.0	13.4	14.6	15.2	14.5	12.9							
80	6.80	7.61	9.09	10.00	9.01	7.97	7.71	8.08	9.36	10.1	9.15	7.57							
85	2.40	2.80	4.01	5.07	4.04	3.07	2.80	3.13	4.34	5.14	4.07	2.79							
90	1.10	1.12	1.23	1.02	1.12	1.04	0.93	1.11	1.29	1.22	1.30	1.14							
95	1.08	1.12	1.15	1.04	1.04	1.01	0.89	1.03	1.21	1.19	1.18	1.08							
100	1.08	1.14	1.15	1.09	1.05	1.04	0.91	1.02	1.23	1.24	1.18	1.07							
105	1.12	1.15	1.17	1.17	1.12	1.09	0.95	1.05	1.27	1.30	1.22	1.07							
110	1.17	1.15	1.20	1.24	1.19	1.15	1.00	1.10	1.31	1.33	1.26	1.11							
115	1.22	1.16	1.22	1.31	1.27	1.22	1.06	1.16	1.36	1.38	1.31	1.15							
120	1.28	1.20	1.26	1.38	1.34	1.29	1.12	1.21	1.40	1.41	1.33	1.17							
125	1.34	1.26	1.31	1.44	1.40	1.35	1.18	1.26	1.44	1.44	1.36	1.24							
130	1.39	1.30	1.37	1.49	1.46	1.41	1.25	1.32	1.48	1.47	1.40	1.29							
135	1.44	1.34	1.44	1.55	1.51	1.47	1.31	1.38	1.52	1.50	1.43	1.28							
140	1.47	1.41	1.52	1.59	1.57	1.52	1.37	1.43	1.55	1.52	1.47	1.33							
145	1.49	1.48	1.59	1.65	1.62	1.58	1.44	1.49	1.59	1.56	1.51	1.39							
150	1.51	1.57	1.65	1.71	1.67	1.63	1.51	1.55	1.64	1.62	1.55	1.45							
155	1.62	1.64	1.71	1.76	1.70	1.69	1.59	1.61	1.69	1.67	1.65	1.51							
160	1.69	1.69	1.75	1.80	1.74	1.75	1.66	1.67	1.73	1.72	1.71	1.57							
165	1.75	1.73	1.78	1.83	1.79	1.80	1.71	1.73	1.78	1.76	1.76	1.63							
170	1.73	1.82	1.81	1.85	1.82	1.83	1.71	1.78	1.82	1.80	1.81	1.77							
175	1.75	1.84	1.84	1.87	1.85	1.86	1.75	1.82	1.86	1.84	1.85	1.81							
180	1.76	1.84	1.86	1.87	1.86	1.86	1.76	1.84	1.86	1.87	1.87	1.85							

C Range: 0 - 360DEG
C Interval: 30.0DEG
Test Speed: HIGH
Temperature:25.3℃
Operators:
Test Date:2025-03-05

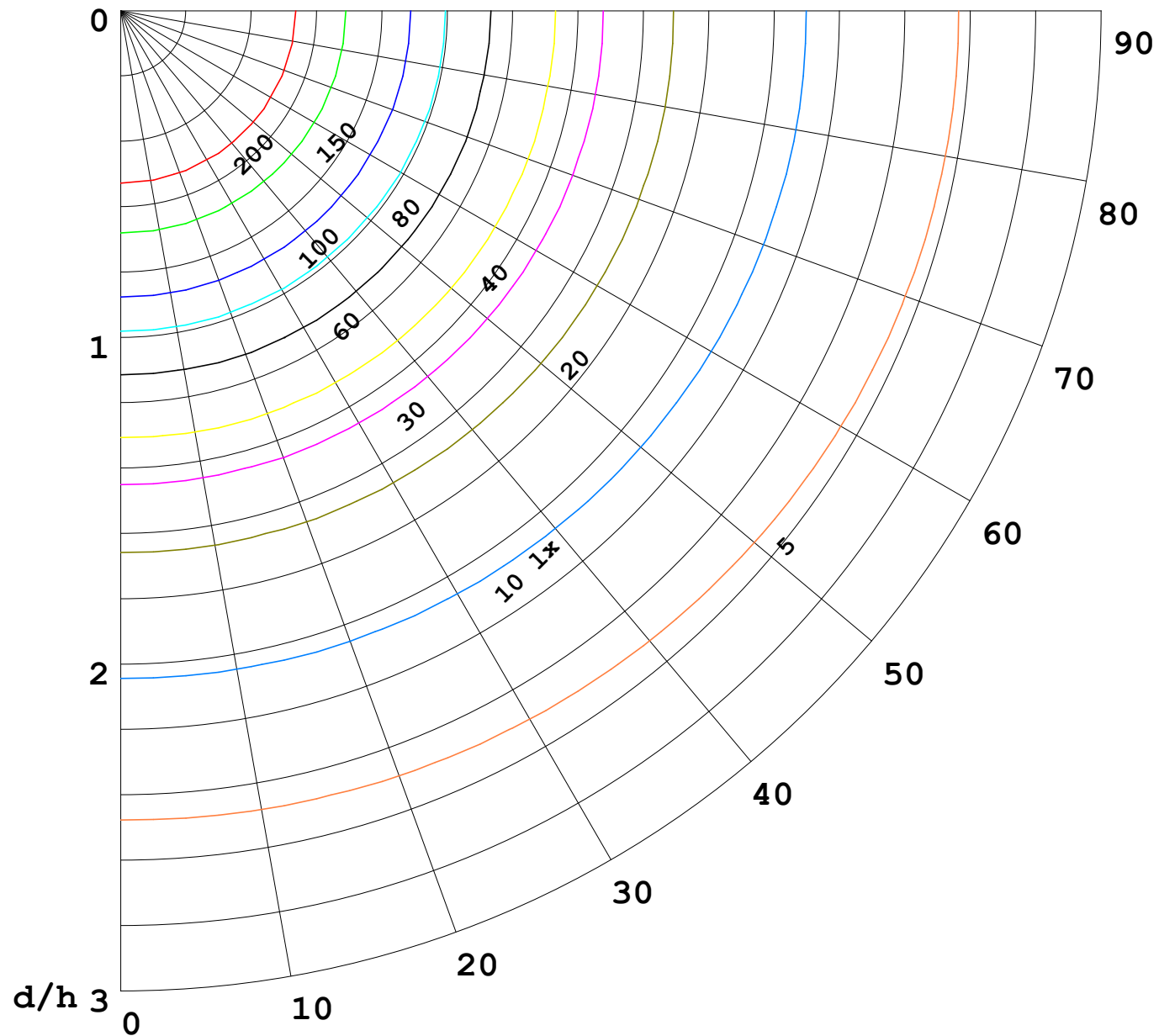
γ Range: 0 - 180DEG
γ Interval: 1.0DEG
Test System:EVERFINE GO-2000B_V1 SYSTEM V2.00.488
Humidity:65.0%
Test Distance:6.360m [K=1.0000]
Remarks:

I (cd)



1000 lm

$\kappa = 1$



F = 1000 lm
 K = 0.7
 Hcc = 0.8 m
 Hfc = 0.0 m
 Eave = 100 lx

	Pcc	Pw	Pfc
—————	70	50	30
—————	50	30	20

