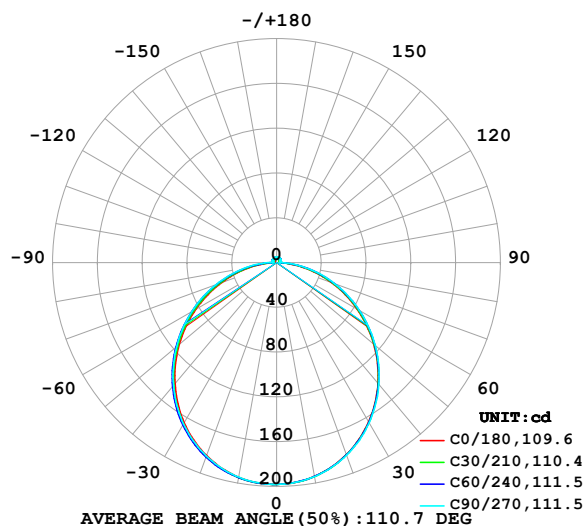


LUMINAIRE PHOTOMETRIC TEST REPORT

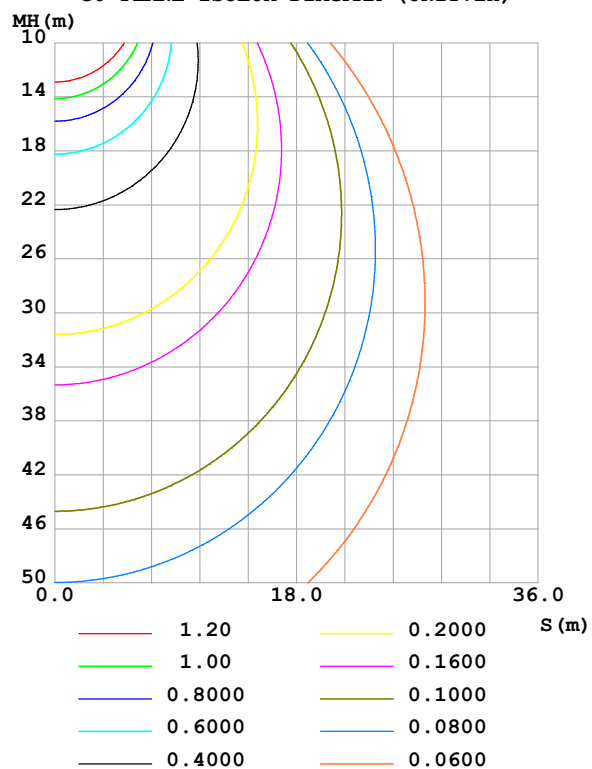
Test:U:24.00V I:0.5852A P:14.04W PF:1.000 Freq:0Hz Lamp Flux:587.737x1 lm		
NAME: SF15-24V-5050-70-DMX-3000K-ALL	TYPE:	WEIGHT:
SPEC.:	DIM.: Length=1m	SERIAL No.:
MFR.: OLympia lighting	SUR.:	Shielding Angle:

DATA OF LAMP		PHOTOMETRIC DATA Eff: 41.85 lm/W			
MODEL	5050	I _{max} (cd)	198.1	S/MH(C0/180)	1.24
NOMINAL POWER(W)	13	LOR(%)	100.0	S/MH(C90/270)	1.25
RATED VOLTAGE(V)	24	TOTAL FLUX(lm)	587.74	η UP,DN(C0-180)	2.0,47.6
NOMINAL FLUX(lm)	587.737	CIE CLASS	DIRECT	η UP,DN(C180-360)	2.1,48.3
LAMPS INSIDE	1	η up (%)	4.1	CIBSE SHR NOM	1.25
TEST VOLTAGE(V)		η down (%)	95.9	CIBSE SHR MAX	1.35

LUMINOUS INTENSITY DISTRIBUTION DIAGRAM



C0 PLANE ISOLUX DIAGRAM (UNIT:lx)



C Range: 0 - 360DEG
C Interval: 30.0DEG
Test Speed: HIGH
Temperature: 25.3 °C
Operators:
Test Date: 2025-03-05

γ Range: 0 - 180DEG
γ Interval: 1.0DEG
Test System: EVERFINE GO-2000B_V1 SYSTEM V2.00.488
Humidity: 65.0%
Test Distance: 6.360m [K=1.0000]
Remarks:

ZONAL FLUX DIAGRAM

ZONAL FLUX DIAGRAM:

γ	C0	C45	C90	C135	C180	C225	C270	C315	γ	Φ zone	Φ total	%lum, lamp
10	194.0	194.0	194.1	194.7	194.7	195.1	194.6	194.4	0- 10	18.74	18.74	3.19,3.19
20	182.5	182.7	183.0	183.7	183.3	184.5	183.8	183.4	10- 20	53.57	72.31	12.3,12.3
30	164.4	164.8	165.3	165.9	165.2	167.0	166.4	165.8	20- 30	80.80	153.1	26,26.1
40	140.9	141.5	142.1	142.4	141.3	143.8	143.5	142.7	30- 40	96.71	249.8	42.5,42.5
50	113.2	114.2	115.0	114.6	113.4	116.2	116.6	115.6	40- 50	99.55	349.4	59.4,59.4
60	83.07	84.45	85.45	84.43	83.18	86.24	87.50	86.04	50- 60	89.58	438.9	74.7,74.7
70	52.28	54.02	55.29	53.48	52.25	55.51	57.74	55.76	60- 70	69.12	508.1	86.4,86.4
80	22.59	24.63	26.33	23.90	22.81	26.11	29.21	26.37	70- 80	41.92	550.0	93.6,93.6
90	3.457	3.607	2.780	3.105	2.951	3.924	3.887	3.849	80- 90	13.60	563.6	95.9,95.9
100	3.228	3.156	3.041	3.011	2.727	3.737	3.935	3.402	90-100	3.609	567.2	96.5,96.5
110	3.388	3.107	3.414	3.307	2.919	3.915	4.218	3.505	100-110	3.560	570.8	97.1,97.1
120	3.662	3.470	3.736	3.643	3.208	4.119	4.429	3.704	110-120	3.573	574.3	97.7,97.7
130	3.917	3.912	4.080	3.945	3.531	4.272	4.589	3.939	120-130	3.478	577.8	98.3,98.3
140	3.954	4.305	4.372	4.218	3.875	4.430	4.702	4.093	130-140	3.195	581.0	98.9,98.9
150	4.380	4.535	4.664	4.510	4.227	4.590	4.829	4.319	140-150	2.742	583.7	99.3,99.3
160	4.738	4.766	4.904	4.807	4.596	4.779	4.898	4.621	150-160	2.141	585.9	99.7,99.7
170	4.796	4.995	5.066	5.043	4.736	4.995	5.034	4.953	160-170	1.377	587.3	99.9,99.9
180	4.896	5.127	5.188	5.148	4.910	5.133	5.179	5.145	170-180	0.4797	587.7	100,100
DEG	LUMINOUS INTENSITY:cd									UNIT:lm		

Conical surface Flux(90deg): 300.06 lm

%lum = 51.1%

%lamp = 51.1%

Conical surface Flux(130deg): 476.59 lm

%lum = 81.1%

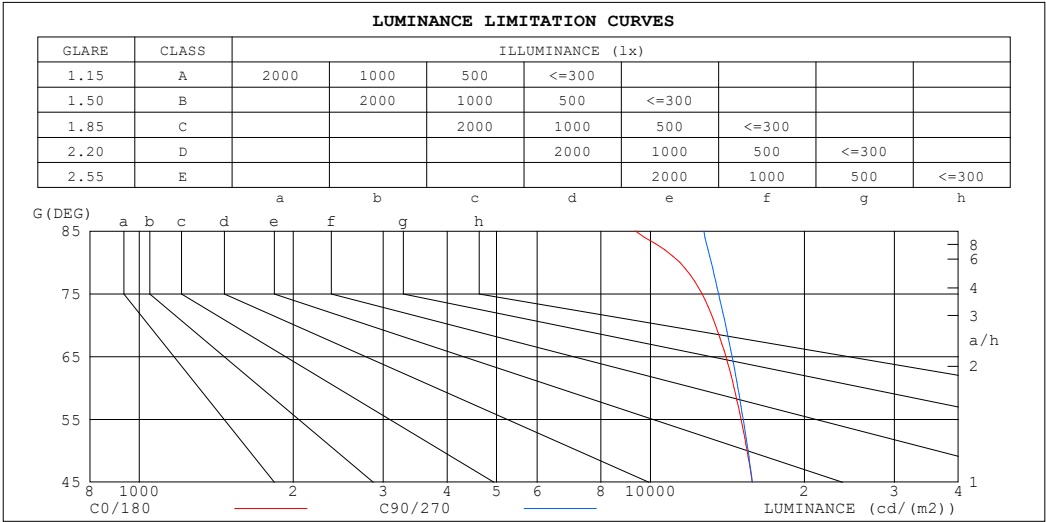
%lamp = 81.1%

C Range: 0 - 360DEG
 C Interval: 30.0DEG
 Test Speed: HIGH
 Temperature:25.3℃
 Operators:
 Test Date:2025-03-05

γ Range: 0 - 180DEG
 γ Interval: 1.0DEG
 Test System:EVERFINE GO-2000B_V1 SYSTEM V2.00.488
 Humidity:65.0%
 Test Distance:6.360m [K=1.0000]
 Remarks:

LUMINANCE LIMITATION CURVES

Test:U:24.00V I:0.5852A P:14.04W PF:1.000 Freq:0Hz Lamp Flux:587.737x1 lm		
NAME: SF15-24V-5050-70-DMX-3000K-ALL	TYPE:	WEIGHT:
SPEC.:	DIM.: Length=1m	SERIAL No.:
MFR.: OLympia lighting	SUR.:	Shielding Angle:



LUMINANCE cd/(m2)		
G (DEG)	C0/180	C90/270
85	9344	12717
80	11409	13153
75	12607	13595
70	13407	14024
65	14043	14443
60	14572	14824
55	15034	15181
50	15450	15516
45	15812	15819

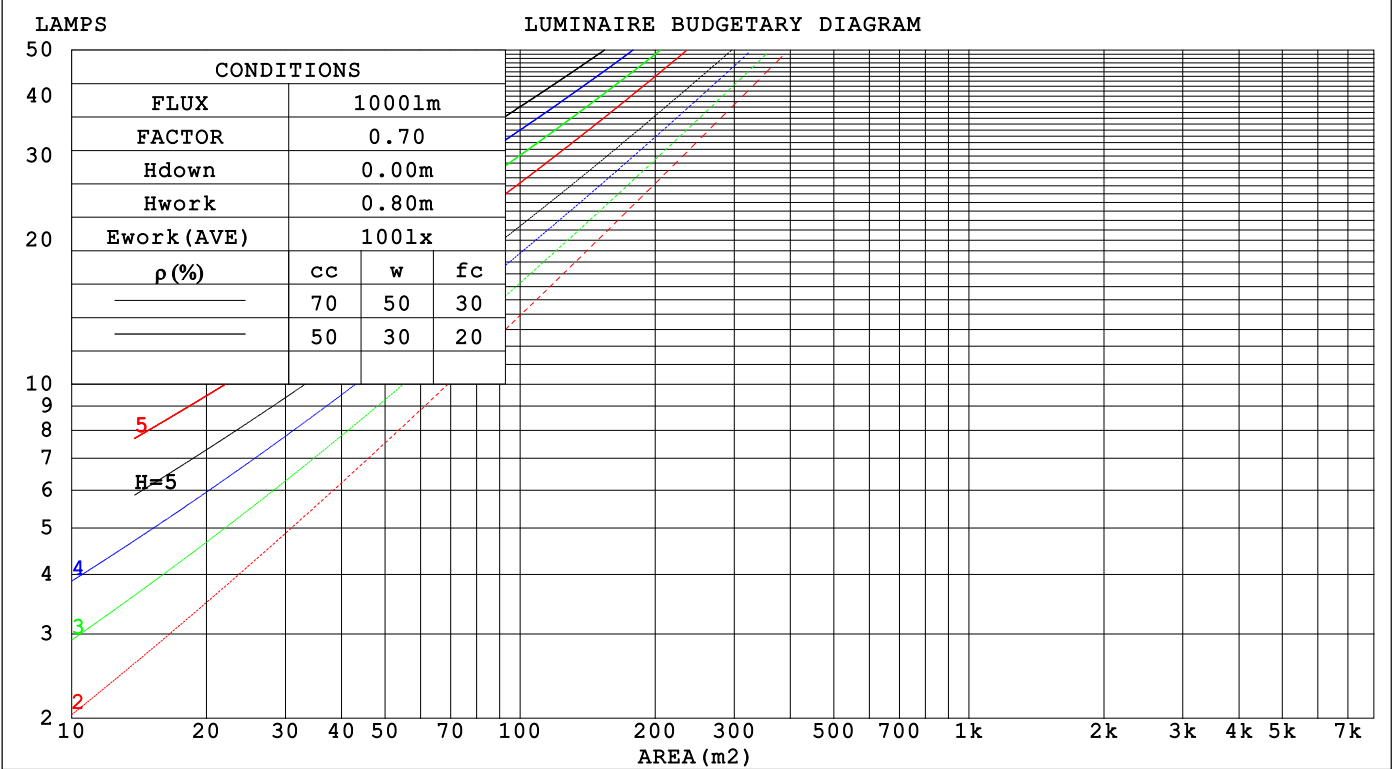
C Range: 0 - 360DEG
C Interval: 30.0DEG
Test Speed: HIGH
Temperature:25.3℃
Operators:
Test Date:2025-03-05

γ Range: 0 - 180DEG
γ Interval: 1.0DEG
Test System:EVERFINE GO-2000B_V1 SYSTEM V2.00.488
Humidity:65.0%
Test Distance:6.360m [K=1.0000]
Remarks:

CU AND LUMINAIRE BUDGETARY ESTIMATE DIAGRAM

Test:U:24.00V I:0.5852A P:14.04W PF:1.000 Freq:0Hz		
Lamp Flux:587.737x1 lm		
NAME: SF15-24V-5050-70-DMX-3000K-ALL	TYPE:	WEIGHT:
SPEC.:	DIM.: Length=1m	SERIAL No.:
MFR.: OLYMPIA lighting	SUR.:	Shielding Angle:

pcc	80%			70%			50%			30%			10%			0
pw	50%	30%	10%	50%	30%	10%	50%	30%	10%	50%	30%	10%	50%	30%	10%	0
pfc	20%			20%			20%			20%			20%			0
RCR	RCR:Room Cavity Ratio															



C Range: 0 - 360DEG
C Interval: 30.0DEG
Test Speed: HIGH
Temperature:25.3℃
Operators:
Test Date:2025-03-05

γ Range: 0 - 180DEG
γ Interval: 1.0DEG
Test System:EVERFINE GO-2000B_V1 SYSTEM V2.00.488
Humidity:65.0%
Test Distance:6.360m [K=1.0000]
Remarks:

WEC AND CCEC

Test:U:24.00V I:0.5852A P:14.04W PF:1.000 Freq:0Hz Lamp Flux:587.737x1 lm		
NAME: SF15-24V-5050-70-DMX-3000K-ALL	TYPE:	WEIGHT:
SPEC.:	DIM.: Length=1m	SERIAL No.:
MFR.: OLympia lighting	SUR.:	Shielding Angle:

pcc	80%			70%			50%			30%			10%			0														
pw	50%	30%	10%	50%	30%	10%	50%	30%	10%	50%	30%	10%	50%	30%	10%	0														
pfc	20%			20%			20%			20%			20%			0														
RCR	RCR:Room Cavity Ratio															Wall Exitance Coefficients(WEC)														
0.0																														
1.0	.314	.179	.057	.306	.175	.055	.291	.167	.053	.276	.159	.051	.263	.152	.049															
2.0	.293	.161	.049	.286	.157	.049	.272	.151	.047	.259	.145	.046	.247	.140	.044															
3.0	.270	.144	.043	.264	.141	.043	.251	.136	.041	.240	.131	.040	.229	.127	.039															
4.0	.249	.129	.038	.243	.127	.038	.232	.123	.037	.222	.119	.036	.212	.115	.035															
5.0	.230	.117	.034	.225	.115	.034	.215	.112	.033	.205	.108	.032	.197	.105	.032															
6.0	.213	.107	.031	.208	.105	.030	.199	.102	.030	.191	.099	.029	.183	.096	.029															
7.0	.198	.098	.028	.194	.097	.028	.186	.094	.027	.178	.091	.027	.171	.089	.026															
8.0	.185	.090	.025	.181	.089	.025	.174	.087	.025	.167	.085	.024	.161	.082	.024															
9.0	.173	.084	.023	.170	.083	.023	.163	.081	.023	.157	.079	.023	.151	.077	.022															
10.0	.163	.078	.022	.160	.077	.022	.154	.075	.021	.148	.073	.021	.143	.072	.021															

pcc	80%			70%			50%			30%			10%			0
pw	50%	30%	10%	50%	30%	10%	50%	30%	10%	50%	30%	10%	50%	30%	10%	0
pfc	20%			20%			20%			20%			20%			0
RCR	RCR:Room Cavity Ratio						Ceiling Cavity Exitance Coefficients (CCEC)									
0.0	.222	.222	.222	.190	.190	.190	.129	.129	.129	.074	.074	.074	.024	.024	.024	
1.0	.212	.188	.166	.182	.161	.142	.124	.111	.099	.071	.064	.057	.023	.021	.019	
2.0	.204	.164	.130	.175	.141	.112	.120	.097	.078	.069	.057	.046	.022	.018	.015	
3.0	.197	.146	.106	.168	.126	.092	.116	.088	.065	.067	.051	.038	.021	.017	.012	
4.0	.189	.133	.090	.162	.115	.079	.111	.080	.055	.064	.047	.033	.021	.015	.011	
5.0	.181	.123	.079	.156	.106	.069	.107	.074	.049	.062	.044	.029	.020	.014	.010	
6.0	.174	.114	.072	.150	.099	.062	.103	.069	.044	.060	.041	.026	.019	.013	.009	
7.0	.167	.108	.066	.144	.093	.057	.100	.065	.041	.058	.039	.024	.019	.013	.008	
8.0	.161	.102	.061	.139	.088	.053	.096	.062	.038	.056	.037	.023	.018	.012	.007	
9.0	.155	.097	.058	.134	.084	.050	.093	.059	.036	.054	.035	.021	.017	.011	.007	
10.0	.149	.093	.055	.129	.081	.048	.089	.057	.034	.052	.033	.020	.017	.011	.007	

C Range: 0 - 360DEG
C Interval: 30.0DEG
Test Speed: HIGH
Temperature:25.3℃
Operators:
Test Date:2025-03-05

γ Range: 0 - 180DEG
γ Interval: 1.0DEG
Test System:EVERFINE GO-2000B_V1 SYSTEM V2.00.488
Humidity:65.0%
Test Distance:6.360m [K=1.0000]
Remarks:

UGR(Unified Glare Rating) Table

Test:U:24.00V I:0.5852A P:14.04W PF:1.000 Freq:0Hz Lamp Flux:587.737x1 lm											
NAME: SF15-24V-5050-70-DMX-3000K-ALL						TYPE:		WEIGHT:			
SPEC.:						DIM.: Length=1m		SERIAL No.:			
MFR.: OLympia lighting						SUR.:		Shielding Angle:			
ceiling/cavity	0.7	0.7	0.5	0.5	0.3	0.7	0.7	0.5	0.5	0.3	
walls	0.5	0.3	0.5	0.3	0.3	0.5	0.3	0.5	0.3	0.3	
working plane	0.2	0.2	0.2	0.2	0.2	0.2	0.2	0.2	0.2	0.2	
Room dimensions		Viewed crosswise					Viewed endwise				
x = 2H y = 2H	2H	23.7	25.2	24.0	25.4	25.7	23.8	25.2	24.1	25.5	25.8
	3H	25.2	26.6	25.6	26.9	27.2	25.3	26.7	25.7	27.0	27.3
	4H	25.8	27.1	26.2	27.4	27.8	26.0	27.3	26.4	27.6	28.0
	6H	26.3	27.5	26.7	27.8	28.2	26.6	27.8	26.9	28.1	28.5
	8H	26.4	27.6	26.8	27.9	28.3	26.7	27.9	27.2	28.3	28.7
	12H	26.5	27.6	26.9	28.0	28.4	26.9	28.0	27.3	28.4	28.8
4H	2H	24.3	25.6	24.7	25.9	26.2	24.3	25.6	24.7	26.0	26.3
	3H	26.0	27.1	26.4	27.5	27.9	26.1	27.3	26.5	27.6	28.0
	4H	26.8	27.8	27.2	28.2	28.6	26.9	28.0	27.4	28.4	28.8
	6H	27.3	28.2	27.8	28.7	29.1	27.6	28.5	28.1	28.9	29.4
	8H	27.5	28.4	28.0	28.8	29.3	27.9	28.7	28.3	29.2	29.6
	12H	27.6	28.4	28.1	28.9	29.4	28.1	28.8	28.6	29.3	29.8
8H	4H	27.0	27.9	27.5	28.3	28.8	27.2	28.1	27.7	28.5	29.0
	6H	27.8	28.5	28.3	29.0	29.5	28.1	28.8	28.6	29.2	29.8
	8H	28.1	28.7	28.6	29.2	29.7	28.4	29.0	28.9	29.5	30.1
	12H	28.3	28.8	28.8	29.3	29.9	28.7	29.2	29.2	29.8	30.3
12H	4H	27.1	27.8	27.6	28.3	28.8	27.2	28.0	27.7	28.5	29.0
	6H	27.9	28.5	28.4	29.0	29.5	28.1	28.7	28.6	29.2	29.8
	8H	28.2	28.7	28.7	29.2	29.8	28.5	29.1	29.1	29.6	30.1
Variations with the observer position at spacings(CIE Pub.117):											
S = 1.0H		+ 0.1 / - 0.2					+ 0.1 / - 0.2				
1.5H		+ 0.2 / - 0.3					+ 0.2 / - 0.3				
2.0H		+ 0.2 / - 0.3					+ 0.1 / - 0.3				

CIE Pub.117, 587.7 lm Total Lamp Luminous Flux Correct (8log(F/F0) = -1.8)
Area: 0.0115 m2

C Range: 0 - 360DEG
C Interval: 30.0DEG
Test Speed: HIGH
Temperature:25.3℃
Operators:
Test Date:2025-03-05

γ Range: 0 - 180DEG
γ Interval: 1.0DEG
Test System:EVERFINE GO-2000B_V1 SYSTEM V2.00.488
Humidity:65.0%
Test Distance:6.360m [K=1.0000]
Remarks:

UTILIZATION FACTORS TABLE

Test:U:24.00V I:0.5852A P:14.04W PF:1.000 Freq:0Hz Lamp Flux:587.737x1 lm		
NAME: SF15-24V-5050-70-DMX-3000K-ALL	TYPE:	WEIGHT:
SPEC.:	DIM.: Length=1m	SERIAL No.:
MFR.: OLympia lighting	SUR.:	Shielding Angle:

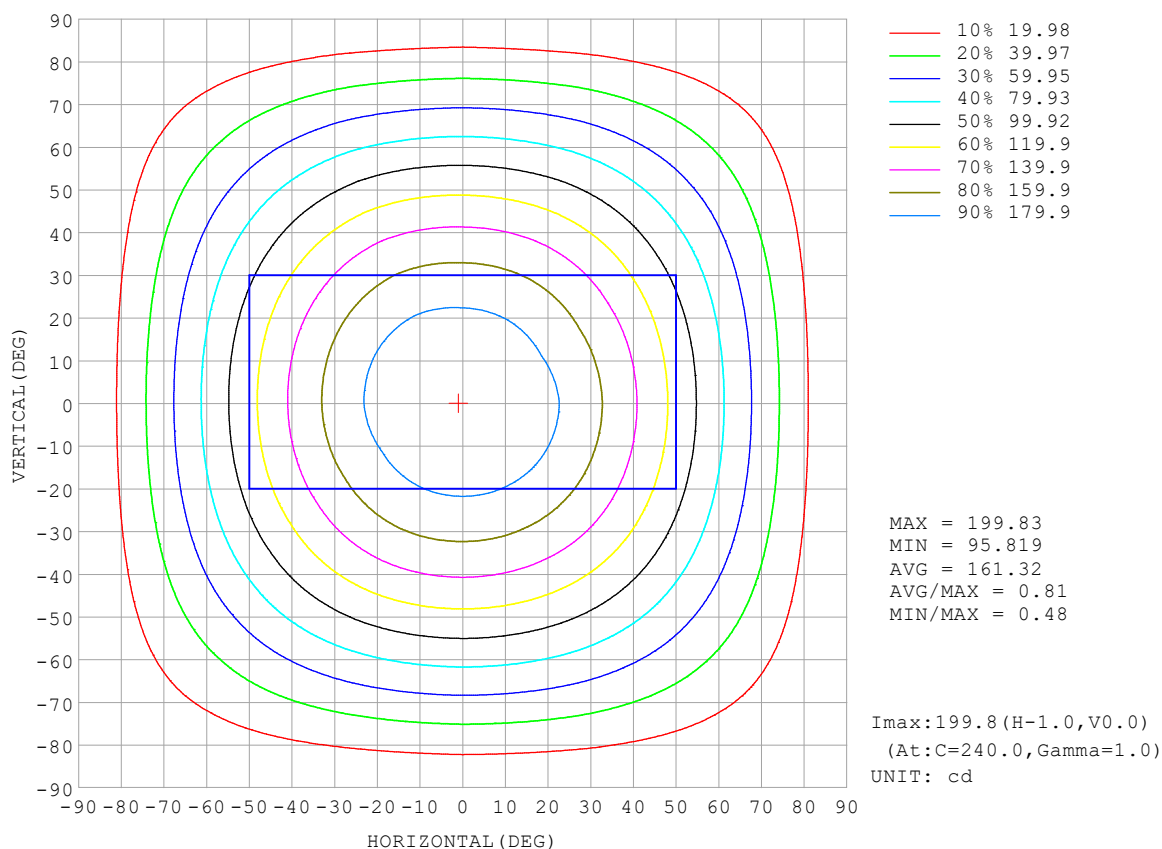
REFLECTANCE										
Ceiling	0.8	0.8	0.8	0.7	0.7	0.7	0.5	0.5	0.5	0
Walls	0.7	0.5	0.3	0.7	0.5	0.3	0.7	0.5	0.3	0
Working plane	0.2	0.2	0.2	0.2	0.2	0.2	0.2	0.2	0.2	0
ROOM INDEX	UTILIZATION FACTORS (PERCENT) $k(RI) \times RCR = 5$									
$k = 0.60$	56	45	38	55	44	38	54	44	37	31
0.80	66	54	47	65	54	47	63	53	46	39
1.00	74	63	56	73	62	55	70	63	55	47
1.25	81	71	63	80	70	63	77	68	62	54
1.50	86	76	69	85	75	69	81	73	67	59
2.00	93	85	78	91	83	77	87	80	75	66
2.50	97	89	83	95	88	82	91	84	80	70
3.00	101	94	88	98	92	87	94	88	84	74
4.00	105	99	94	102	97	92	97	93	89	79
5.00	107	102	98	104	100	96	99	96	92	82
ROOM INDEX	UF (total)									Direct
According to DIN EN 13032-2 2004			Suspended					SHRNOM = 1.25		

C Range: 0 - 360DEG
 C Interval: 30.0DEG
 Test Speed: HIGH
 Temperature: 25.3 °C
 Operators:
 Test Date: 2025-03-05

γ Range: 0 - 180DEG
 γ Interval: 1.0DEG
 Test System: EVERFINE GO-2000B_V1 SYSTEM V2.00.488
 Humidity: 65.0%
 Test Distance: 6.360m [K=1.0000]
 Remarks:

ISOCANDELA DIAGRAM

Test:U:24.00V I:0.5852A P:14.04W PF:1.000 Freq:0Hz Lamp Flux:587.737x1 lm		
NAME: SF15-24V-5050-70-DMX-3000K-ALL	TYPE:	WEIGHT:
SPEC.:	DIM.: Length=1m	SERIAL No.:
MFR.: OLympia lighting	SUR.:	Shielding Angle:

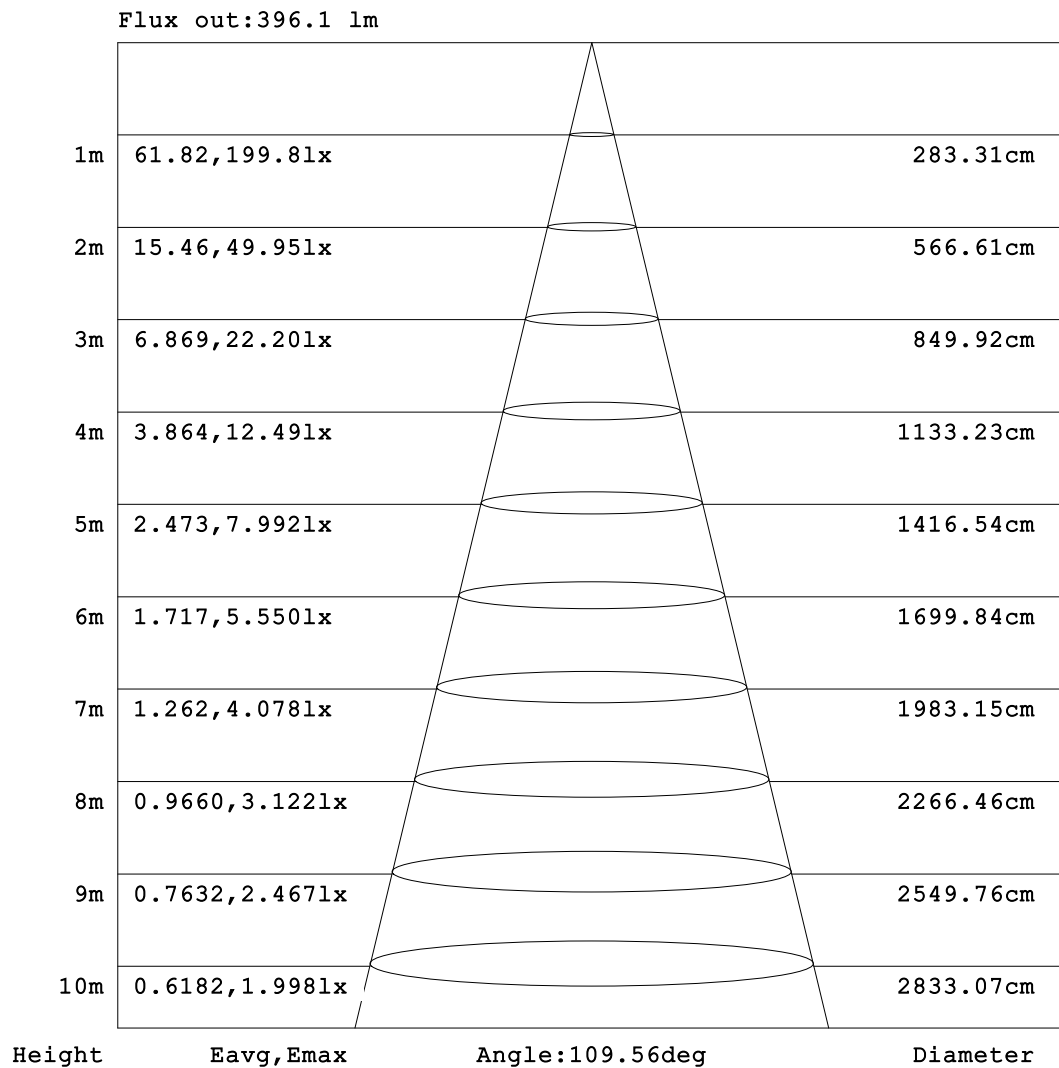


C Range: 0 - 360DEG
C Interval: 30.0DEG
Test Speed: HIGH
Temperature:25.3℃
Operators:
Test Date:2025-03-05

γ Range: 0 - 180DEG
γ Interval: 1.0DEG
Test System:EVERFINE GO-2000B_V1 SYSTEM V2.00.488
Humidity:65.0%
Test Distance:6.360m [K=1.0000]
Remarks:

AAI Figure

Test:U:24.00V I:0.5852A P:14.04W PF:1.000 Freq:0Hz Lamp Flux:587.737x1 lm		
NAME: SF15-24V-5050-70-DMX-3000K-ALL	TYPE:	WEIGHT:
SPEC.:	DIM.: Length=1m	SERIAL No.:
MFR.: OLympia lighting	SUR.:	Shielding Angle:



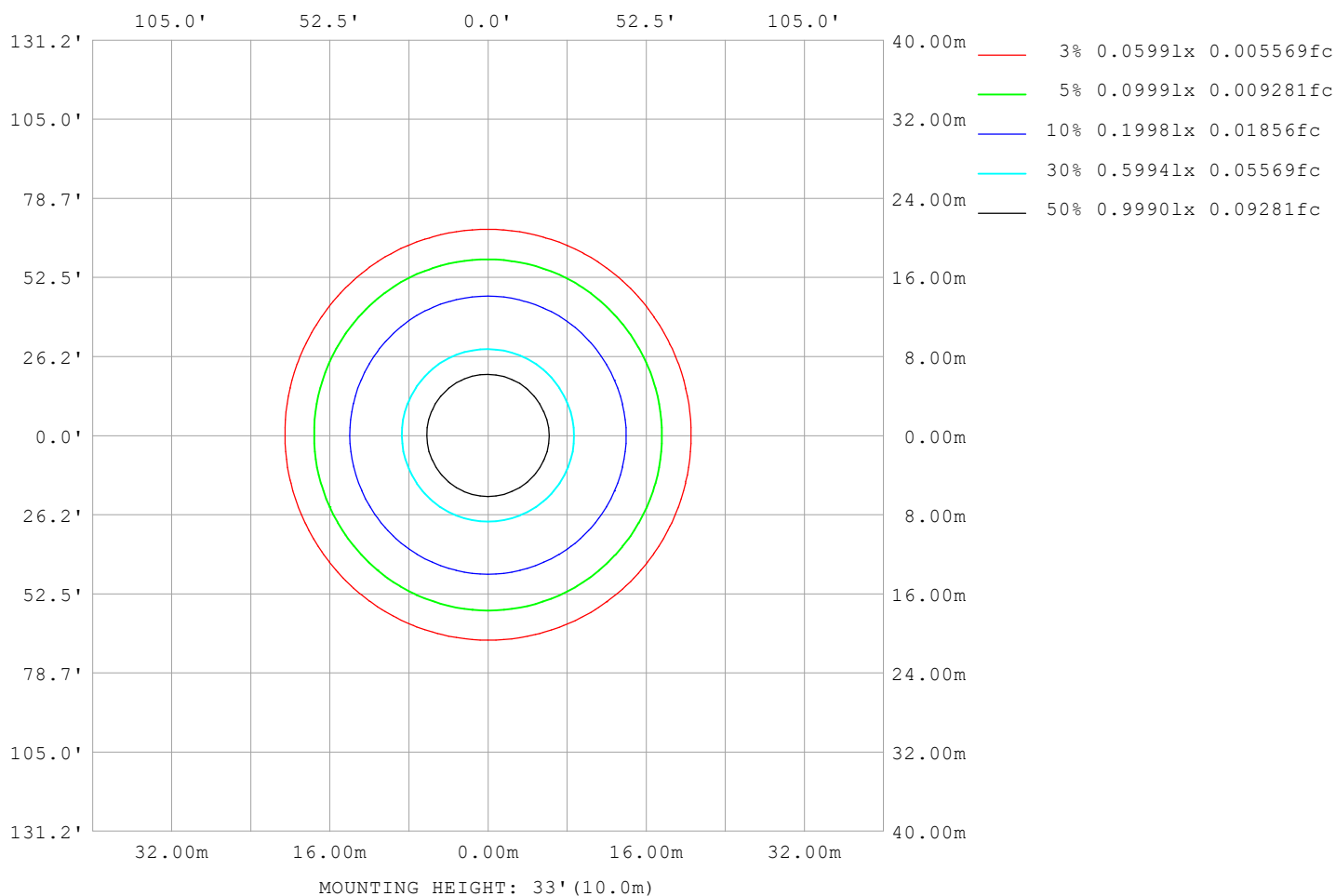
Note:The Curves indicate the illuminated area and the average illumination when the luminaire is at different distance.

C Range: 0 - 360DEG
C Interval: 30.0DEG
Test Speed: HIGH
Temperature:25.3℃
Operators:
Test Date:2025-03-05

γ Range: 0 - 180DEG
γ Interval: 1.0DEG
Test System:EVERFINE GO-2000B_V1 SYSTEM V2.00.488
Humidity:65.0%
Test Distance:6.360m [K=1.0000]
Remarks:

ISOLUX DIAGRAM

Test:U:24.00V I:0.5852A P:14.04W PF:1.000 Freq:0Hz Lamp Flux:587.737x1 lm		
NAME: SF15-24V-5050-70-DMX-3000K-ALL	TYPE:	WEIGHT:
SPEC.:	DIM.: Length=1m	SERIAL No.:
MFR.: OLympia lighting	SUR.:	Shielding Angle:



C Range: 0 - 360DEG
C Interval: 30.0DEG
Test Speed: HIGH
Temperature: 25.3°C
Operators:
Test Date: 2025-03-05

γ Range: 0 - 180DEG
γ Interval: 1.0DEG
Test System: EVERFINE GO-2000B_V1 SYSTEM V2.00.488
Humidity: 65.0%
Test Distance: 6.360m [K=1.0000]
Remarks:

LED Avg.L Report

Test:U:24.00V I:0.5852A P:14.04W PF:1.000 Freq:0Hz Lamp Flux:587.737x1 lm		
NAME: SF15-24V-5050-70-DMX-3000K-ALL	TYPE:	WEIGHT:
SPEC.:	DIM.: Length=1m	SERIAL No.:
MFR.: OLympia lighting	SUR.:	Shielding Angle:

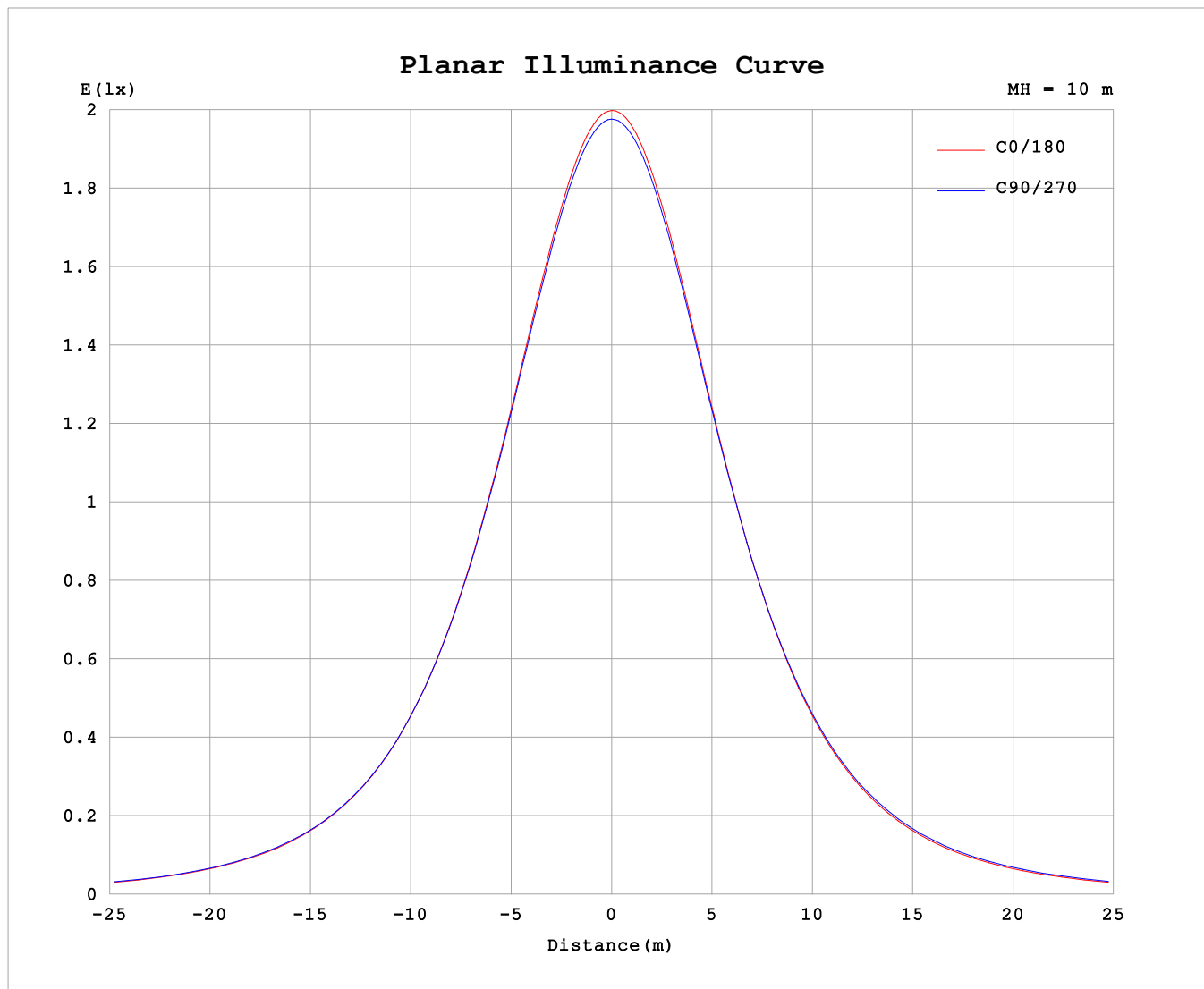
AvgL	cd/m2
L_0~180 (65) av	13925
L_0~180 (75) av	12496
L_0~180 (85) av	9313
L_90~270 (65) av	14706
L_90~270 (75) av	14071
L_90~270 (85) av	14272
L_45 (65) av	14409
L_45 (75) av	13354
L_45 (85) av	11562

Standard: GB/T 29293-2012

C Range: 0 - 360DEG
C Interval: 30.0DEG
Test Speed: HIGH
Temperature:25.3℃
Operators:
Test Date:2025-03-05

γ Range: 0 - 180DEG
γ Interval: 1.0DEG
Test System:EVERFINE GO-2000B_V1 SYSTEM V2.00.488
Humidity:65.0%
Test Distance:6.360m [K=1.0000]
Remarks:

Planar Illuminance Curve



C Range: 0 - 360DEG
C Interval: 30.0DEG
Test Speed: HIGH
Temperature: 25.3 °C
Operators:
Test Date: 2025-03-05

γ Range: 0 - 180DEG
 γ Interval: 1.0DEG
Test System: EVERFINE GO-2000B_V1 SYSTEM V2.00.488
Humidity: 65.0%
Test Distance: 6.360m [K=1.0000]
Remarks:

LUMINOUS DISTRIBUTION INTENSITY DATA

Test:U:24.00V I:0.5852A P:14.04W PF:1.000 Freq:0Hz Lamp Flux:587.737x1 lm																	
NAME: SF15-24V-5050-70-DMX-3000K-ALL									TYPE:						WEIGHT:		
SPEC.:									DIM.: Length=1m						SERIAL No.:		
MFR.: OLYMPIA lighting									SUR.:						Shielding Angle:		

Table--1

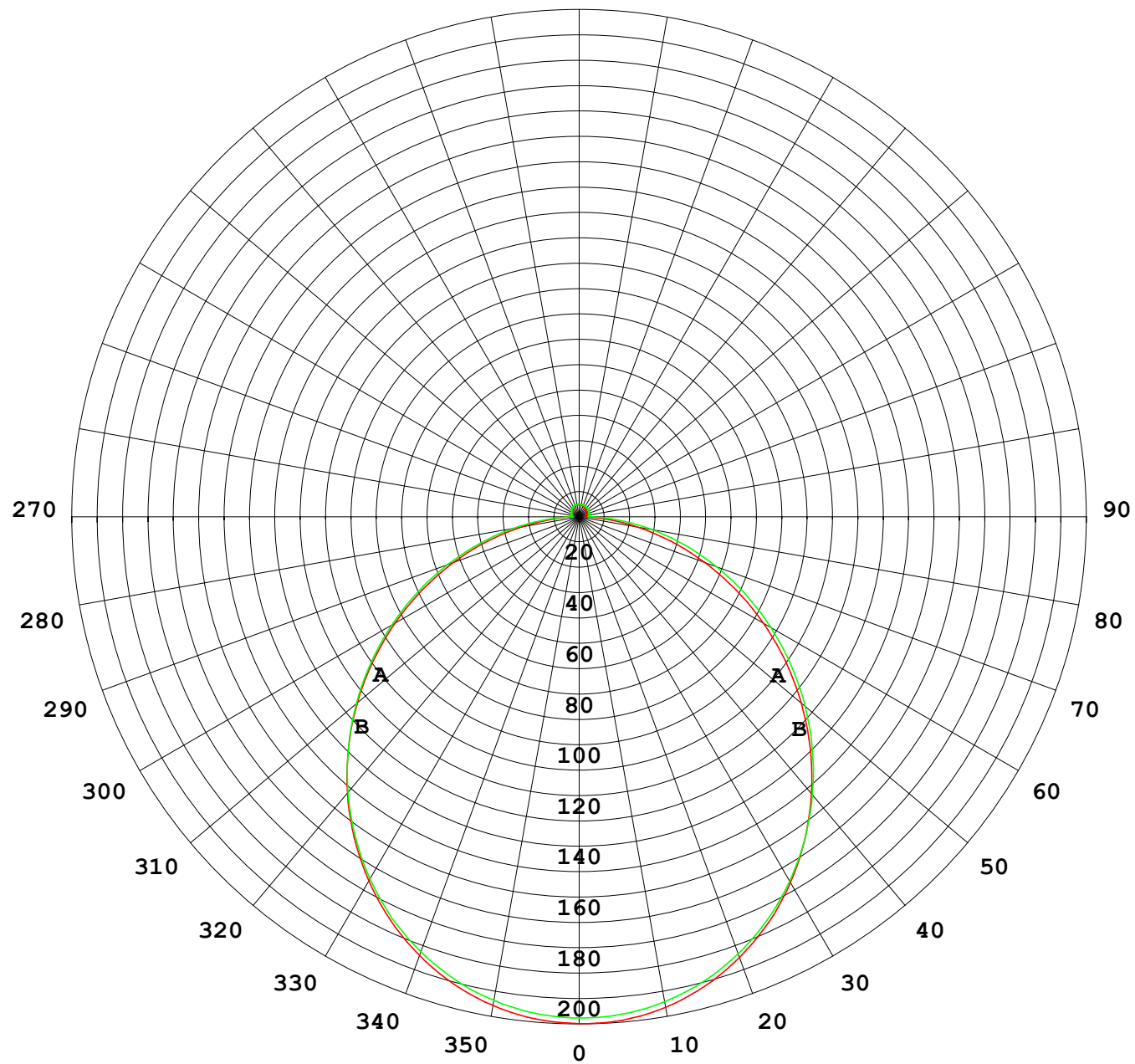
UNIT: cd

C (DEG) γ (DEG)	0	30	60	90	120	150	180	210	240	270	300	330						
0	198	198	198	198	198	198	198	198	198	198	198	198						
5	197	197	197	197	197	197	197	197	198	197	197	197						
10	194	194	194	194	194	195	195	195	195	195	195	195						
15	189	189	189	189	190	190	190	191	191	190	190	190						
20	182	183	183	183	184	184	183	184	185	184	184	183						
25	174	175	175	175	176	176	175	176	177	176	176	175						
30	164	165	165	165	166	166	165	167	168	166	166	165						
35	153	154	154	154	155	155	154	155	157	156	155	154						
40	141	141	142	142	143	142	141	143	145	143	143	142						
45	127	128	128	129	129	129	128	129	131	130	130	129						
50	113	114	115	115	115	114	113	115	117	117	116	115						
55	98.3	99.0	99.9	100	100	99.2	98.5	100	103	102	102	100						
60	83.1	83.8	85.1	85.4	85.0	83.8	83.2	84.9	87.5	87.5	87.1	85.0						
65	67.7	68.5	70.0	70.4	69.6	68.3	67.7	69.5	72.2	72.6	72.1	69.7						
70	52.3	53.2	54.8	55.3	54.2	52.7	52.3	54.0	57.0	57.7	57.0	54.5						
75	37.2	38.2	40.0	40.6	39.2	37.6	37.2	39.0	42.1	43.2	42.3	39.4						
80	22.6	23.7	25.6	26.3	24.7	23.1	22.8	24.5	27.7	29.2	27.9	24.8						
85	9.28	10.2	11.8	12.8	11.1	9.70	9.38	10.9	14.0	15.8	14.1	11.1						
90	3.46	3.64	3.57	2.78	3.13	3.08	2.95	3.50	4.35	3.89	4.18	3.52						
95	3.23	3.33	3.27	2.84	2.97	2.95	2.72	3.27	4.21	3.78	3.71	3.14						
100	3.23	3.14	3.17	3.04	3.01	3.01	2.73	3.27	4.20	3.93	3.67	3.13						
105	3.28	2.95	3.17	3.23	3.16	3.11	2.80	3.32	4.30	4.09	3.71	3.13						
110	3.39	2.93	3.28	3.41	3.35	3.27	2.92	3.43	4.40	4.22	3.79	3.22						
115	3.52	3.06	3.48	3.56	3.52	3.43	3.06	3.56	4.49	4.33	3.89	3.34						
120	3.66	3.26	3.68	3.74	3.69	3.59	3.21	3.68	4.56	4.43	3.94	3.47						
125	3.81	3.47	3.87	3.92	3.85	3.76	3.36	3.79	4.61	4.51	4.04	3.60						
130	3.92	3.72	4.10	4.08	3.98	3.91	3.53	3.89	4.66	4.59	4.13	3.75						
135	3.92	3.94	4.27	4.23	4.11	4.04	3.70	4.00	4.71	4.65	4.23	3.73						
140	3.95	4.22	4.39	4.37	4.25	4.18	3.87	4.12	4.74	4.70	4.33	3.86						
145	4.12	4.38	4.49	4.52	4.39	4.33	4.05	4.24	4.77	4.74	4.42	3.99						
150	4.38	4.48	4.59	4.66	4.54	4.48	4.23	4.38	4.80	4.83	4.50	4.14						
155	4.59	4.60	4.74	4.80	4.69	4.63	4.41	4.52	4.84	4.86	4.68	4.29						
160	4.74	4.70	4.83	4.90	4.82	4.79	4.60	4.67	4.89	4.90	4.79	4.45						
165	4.85	4.79	4.92	5.00	4.94	4.94	4.74	4.81	4.96	4.96	4.90	4.60						
170	4.80	4.99	5.00	5.07	5.03	5.06	4.74	4.94	5.05	5.03	4.99	4.91						
175	4.85	5.07	5.08	5.14	5.12	5.13	4.85	5.05	5.14	5.11	5.10	5.03						
180	4.90	5.10	5.15	5.19	5.15	5.14	4.91	5.10	5.17	5.18	5.17	5.12						

C Range: 0 - 360DEG
C Interval: 30.0DEG
Test Speed: HIGH
Temperature:25.3℃
Operators:
Test Date:2025-03-05

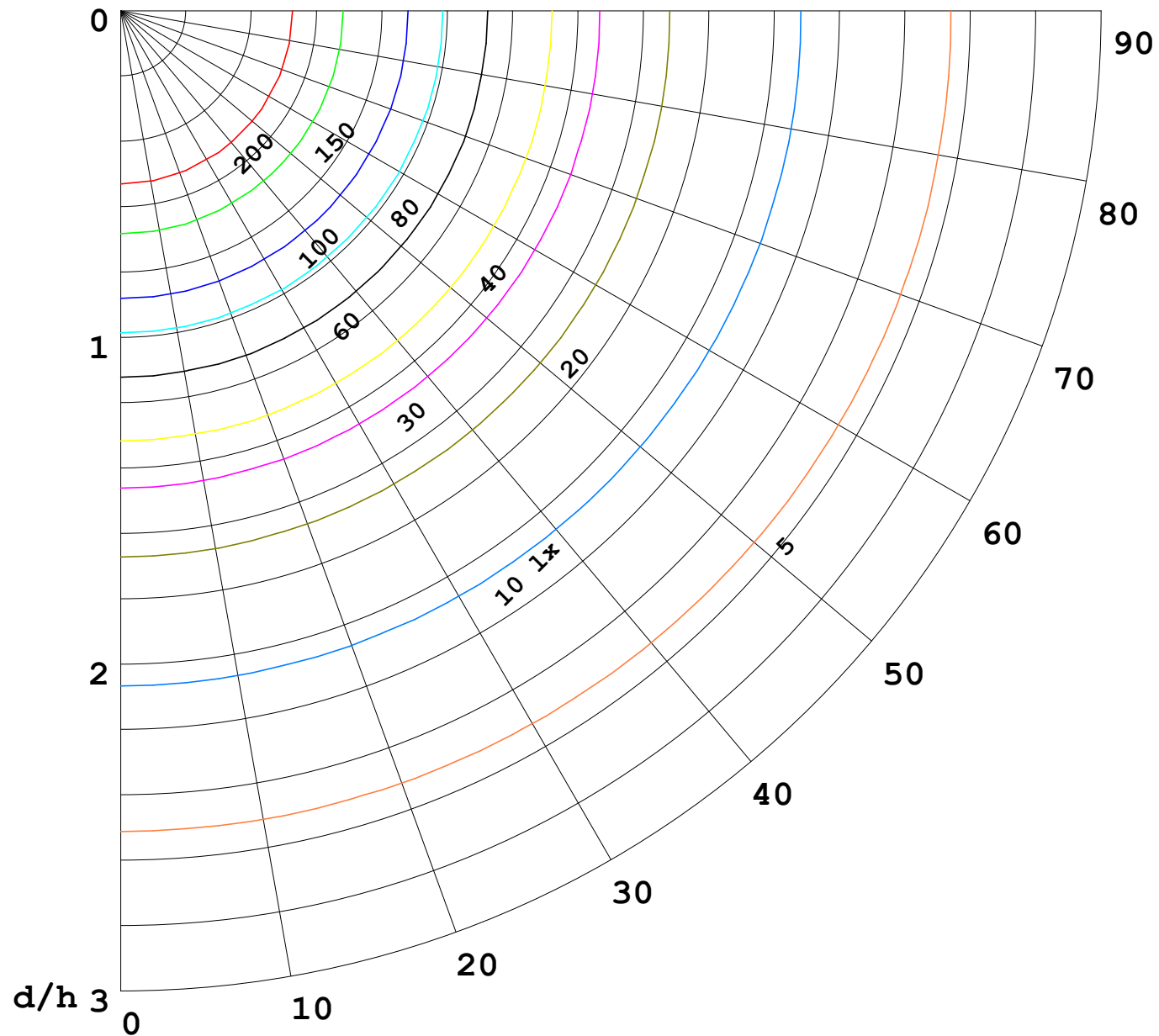
γ Range: 0 - 180DEG
γ Interval: 1.0DEG
Test System:EVERFINE GO-2000B_V1 SYSTEM V2.00.488
Humidity:65.0%
Test Distance:6.360m [K=1.0000]
Remarks:

I (cd)



1000 lm

$\kappa = 1$



F = 1000 lm
 K = 0.7
 Hcc = 0.8 m
 Hfc = 0.0 m
 Eave = 100 lx

	Pcc	Pw	Pfc
—————	70	50	30
—————	50	30	20

