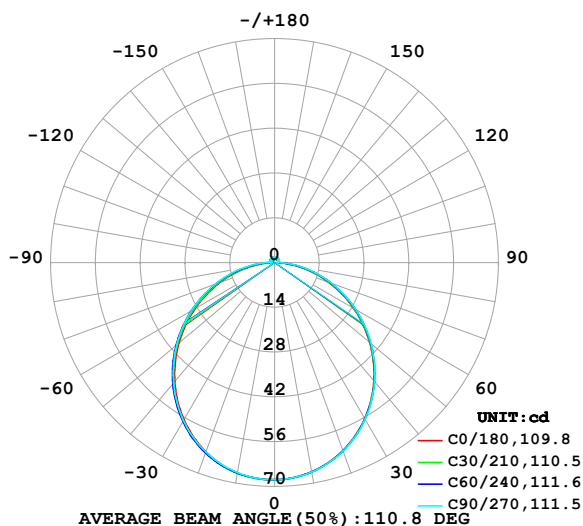


LUMINAIRE PHOTOMETRIC TEST REPORT

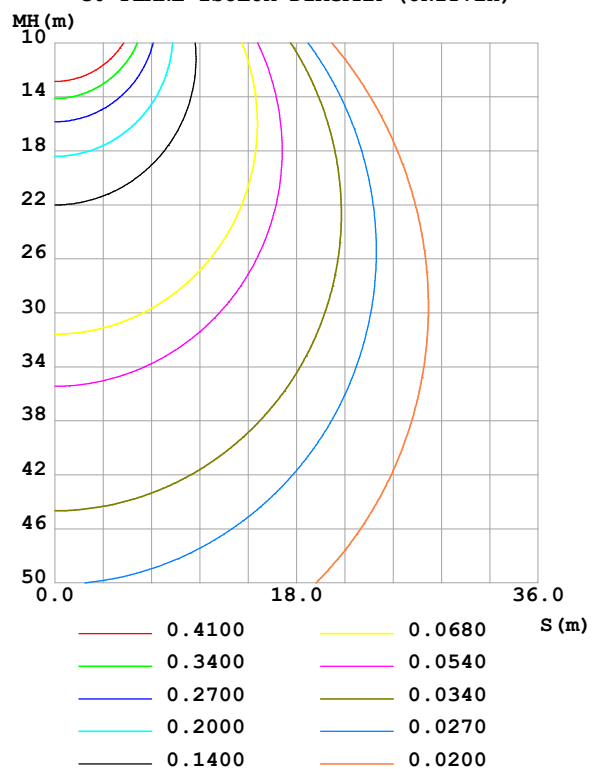
Test:U:24.00V I:0.4658A P:11.18W PF:1.000 Freq:0Hz Lamp Flux:201.648x1 lm		
NAME: SF15-24V-5050-70-DMX-3000K(1)	TYPE:	WEIGHT:
SPEC.:	DIM.: Length=1m	SERIAL No.:
MFR.: OLympia lighting	SUR.:	Shielding Angle:

DATA OF LAMP		PHOTOMETRIC DATA Eff: 18.04 lm/W			
MODEL	5050	Imax (cd)	67.87	S/MH(C0/180)	1.24
NOMINAL POWER(W)		LOR(%)	100.0	S/MH(C90/270)	1.25
RATED VOLTAGE(V)	24	TOTAL FLUX(lm)	201.65	η UP,DN(C0-180)	2.0,47.5
NOMINAL FLUX(lm)	201.648	CIE CLASS	DIRECT	η UP,DN(C180-360)	2.1,48.3
LAMPS INSIDE	1	η up (%)	4.1	CIBSE SHR NOM	1.25
TEST VOLTAGE(V)		η down (%)	95.9	CIBSE SHR MAX	1.35

LUMINOUS INTENSITY DISTRIBUTION DIAGRAM



C0 PLANE ISOLUX DIAGRAM (UNIT:lx)



C Range: 0 - 360DEG
C Interval: 30.0DEG
Test Speed: HIGH
Temperature: 25.3 °C
Operators:
Test Date: 2025-03-05

γ Range: 0 - 180DEG
 γ Interval: 1.0DEG
Test System: EVERFINE GO-2000B_V1 SYSTEM V2.00.488
Humidity: 65.0%
Test Distance: 6.360m [K=1.0000]
Remarks:

ZONAL FLUX DIAGRAM

ZONAL FLUX DIAGRAM:

γ	C0	C45	C90	C135	C180	C225	C270	C315	γ	Φ zone	Φ total	%lum, lamp
10	66.45	66.49	66.49	66.70	66.79	66.86	66.70	66.64	0- 10	6.421	6.421	3.18,3.18
20	62.50	62.61	62.67	62.96	62.95	63.27	62.99	62.87	10- 20	18.36	24.78	12.3,12.3
30	56.35	56.47	56.58	56.86	56.73	57.29	57.05	56.82	20- 30	27.69	52.47	26,26
40	48.29	48.47	48.63	48.78	48.59	49.33	49.19	48.91	30- 40	33.15	85.62	42.5,42.5
50	38.78	39.13	39.35	39.28	39.06	39.91	39.97	39.61	40- 50	34.13	119.8	59.4,59.4
60	28.46	28.95	29.27	28.91	28.70	29.63	29.98	29.51	50- 60	30.72	150.5	74.6,74.6
70	17.95	18.54	18.96	18.32	18.10	19.10	19.78	19.13	60- 70	23.72	174.2	86.4,86.4
80	7.841	8.506	9.065	8.189	7.993	9.001	10.01	9.059	70- 80	14.41	188.6	93.5,93.5
90	1.226	1.256	0.9927	1.069	1.030	1.365	1.336	1.337	80- 90	4.710	193.3	95.9,95.9
100	1.106	1.145	1.056	1.031	0.9388	1.288	1.348	1.169	90-100	1.249	194.6	96.5,96.5
110	1.144	1.180	1.189	1.129	1.002	1.350	1.446	1.208	100-110	1.239	195.8	97.1,97.1
120	1.196	1.254	1.287	1.248	1.106	1.417	1.527	1.276	110-120	1.242	197.1	97.7,97.7
130	1.233	1.321	1.397	1.355	1.219	1.472	1.576	1.356	120-130	1.194	198.2	98.3,98.3
140	1.337	1.412	1.504	1.450	1.337	1.522	1.610	1.407	130-140	1.089	199.3	98.9,98.9
150	1.456	1.540	1.622	1.548	1.459	1.580	1.662	1.485	140-150	0.9366	200.3	99.3,99.3
160	1.620	1.642	1.708	1.653	1.586	1.643	1.682	1.594	150-160	0.7353	201.0	99.7,99.7
170	1.655	1.721	1.746	1.736	1.632	1.719	1.729	1.707	160-170	0.4740	201.5	99.9,99.9
180	1.681	1.762	1.778	1.770	1.678	1.762	1.775	1.770	170-180	0.1650	201.6	100,100
DEG	LUMINOUS INTENSITY:cd									UNIT:lm		

Conical surface Flux(90deg): 102.85 lm

%lum = 51.0%

%lamp = 51.0%

Conical surface Flux(130deg): 163.39 lm

%lum = 81.0%

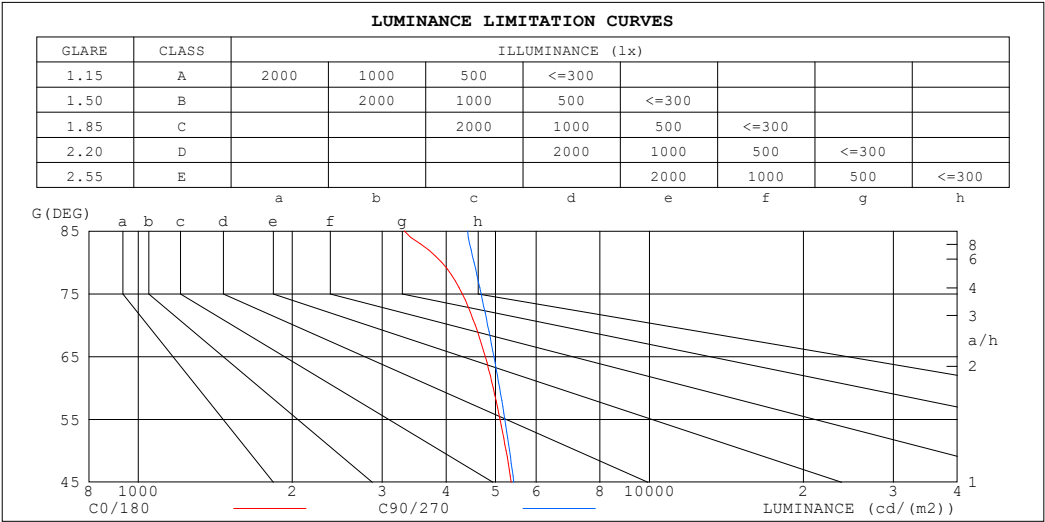
%lamp = 81.0%

C Range: 0 - 360DEG
 C Interval: 30.0DEG
 Test Speed: HIGH
 Temperature:25.3℃
 Operators:
 Test Date:2025-03-05

γ Range: 0 - 180DEG
 γ Interval: 1.0DEG
 Test System:EVERFINE GO-2000B_V1 SYSTEM V2.00.488
 Humidity:65.0%
 Test Distance:6.360m [K=1.0000]
 Remarks:

LUMINANCE LIMITATION CURVES

Test:U:24.00V I:0.4658A P:11.18W PF:1.000 Freq:0Hz Lamp Flux:201.648x1 lm		
NAME: SF15-24V-5050-70-DMX-3000K(1)	TYPE:	WEIGHT:
SPEC.:	DIM.: Length=1m	SERIAL No.:
MFR.: OLympia lighting	SUR.:	Shielding Angle:



LUMINANCE cd/(m2)		
G (DEG)	C0/180	C90/270
85	3315	4406
80	3923	4540
75	4300	4685
70	4561	4821
65	4770	4961
60	4946	5091
55	5101	5211
50	5242	5324
45	5367	5427

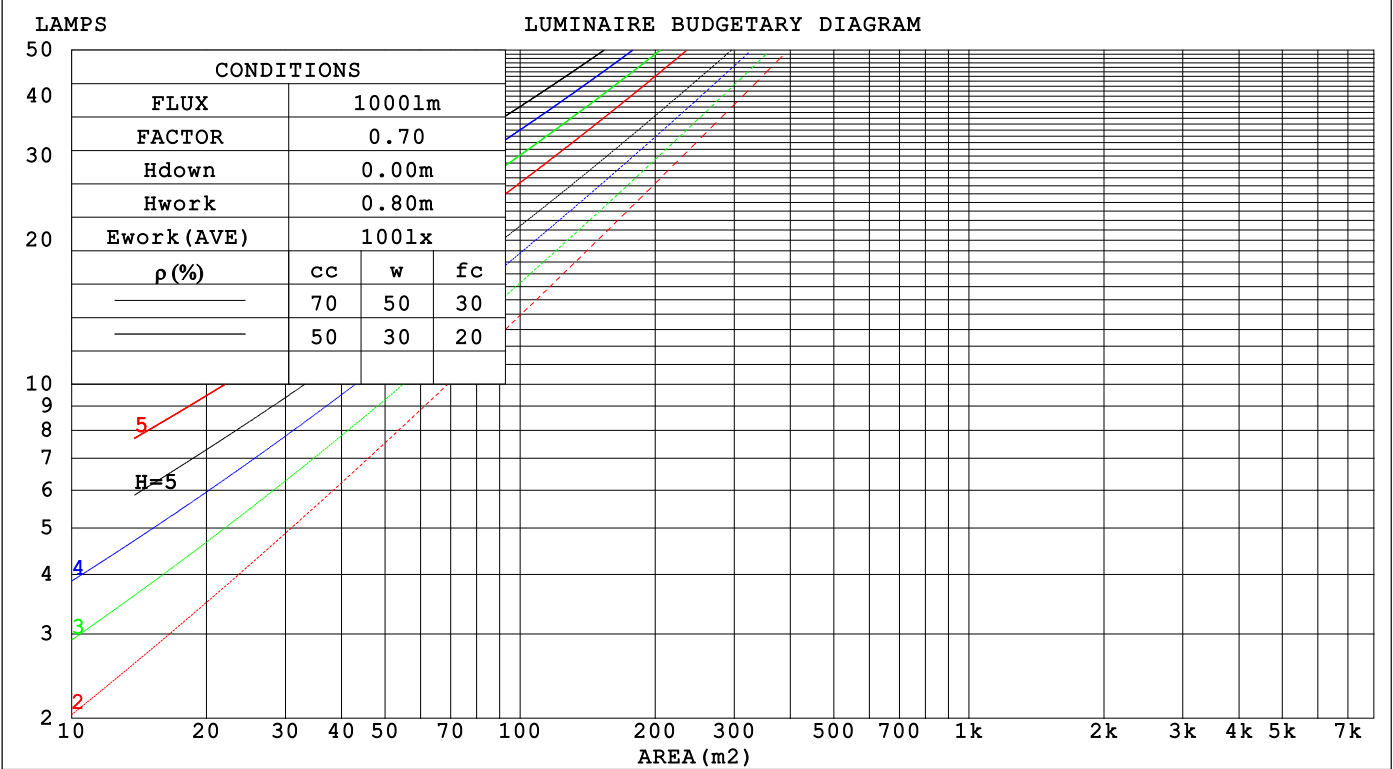
C Range: 0 - 360DEG
C Interval: 30.0DEG
Test Speed: HIGH
Temperature:25.3℃
Operators:
Test Date:2025-03-05

γ Range: 0 - 180DEG
γ Interval: 1.0DEG
Test System:EVERFINE GO-2000B_V1 SYSTEM V2.00.488
Humidity:65.0%
Test Distance:6.360m [K=1.0000]
Remarks:

CU AND LUMINAIRE BUDGETARY ESTIMATE DIAGRAM

Test:U:24.00V I:0.4658A P:11.18W PF:1.000 Freq:0Hz Lamp Flux:201.648x1 lm		
NAME: SF15-24V-5050-70-DMX-3000K(1)	TYPE:	WEIGHT:
SPEC.:	DIM.: Length=1m	SERIAL No.:
MFR.: OLYMPIA lighting	SUR.:	Shielding Angle:

pcc	80%			70%			50%			30%			10%			0
pw	50%	30%	10%	50%	30%	10%	50%	30%	10%	50%	30%	10%	50%	30%	10%	0
pfc	20%			20%			20%			20%			20%			0
RCR	RCR:Room Cavity Ratio															



C Range: 0 - 360DEG
C Interval: 30.0DEG
Test Speed: HIGH
Temperature:25.3℃
Operators:
Test Date:2025-03-05

γ Range: 0 - 180DEG
γ Interval: 1.0DEG
Test System:EVERFINE GO-2000B_V1 SYSTEM V2.00.488
Humidity:65.0%
Test Distance:6.360m [K=1.0000]
Remarks:

WEC AND CCEC

Test:U:24.00V I:0.4658A P:11.18W PF:1.000 Freq:0Hz Lamp Flux:201.648x1 lm		
NAME: SF15-24V-5050-70-DMX-3000K(1)	TYPE:	WEIGHT:
SPEC.:	DIM.: Length=1m	SERIAL No.:
MFR.: OLympia lighting	SUR.:	Shielding Angle:

pcc	80%			70%			50%			30%			10%			0														
pw	50%	30%	10%	50%	30%	10%	50%	30%	10%	50%	30%	10%	50%	30%	10%	0														
pfc	20%			20%			20%			20%			20%			0														
RCR	RCR:Room Cavity Ratio															Wall Exitance Coefficients(WEC)														
0.0																														
1.0	.315	.179	.057	.306	.175	.056	.291	.167	.053	.276	.159	.051	.263	.153	.049															
2.0	.293	.161	.049	.286	.158	.049	.272	.151	.047	.259	.146	.046	.248	.140	.044															
3.0	.270	.144	.043	.264	.141	.043	.251	.136	.041	.240	.132	.040	.229	.127	.039															
4.0	.249	.129	.038	.243	.127	.038	.232	.123	.037	.222	.119	.036	.212	.115	.035															
5.0	.230	.117	.034	.225	.115	.034	.215	.112	.033	.205	.108	.032	.197	.105	.032															
6.0	.213	.107	.031	.208	.105	.030	.199	.102	.030	.191	.099	.029	.183	.096	.029															
7.0	.198	.098	.028	.194	.097	.028	.186	.094	.027	.178	.091	.027	.171	.089	.026															
8.0	.185	.090	.025	.181	.089	.025	.174	.087	.025	.167	.085	.024	.161	.082	.024															
9.0	.173	.084	.023	.170	.083	.023	.163	.081	.023	.157	.079	.023	.151	.077	.022															
10.0	.163	.078	.022	.160	.077	.022	.154	.075	.021	.148	.073	.021	.143	.072	.021															

pcc	80%			70%			50%			30%			10%			0
pw	50%	30%	10%	50%	30%	10%	50%	30%	10%	50%	30%	10%	50%	30%	10%	0
pfc	20%			20%			20%			20%			20%			0
RCR	RCR:Room Cavity Ratio						Ceiling Cavity Exitance Coefficients (CCEC)									
0.0	.222	.222	.222	.190	.190	.190	.129	.129	.129	.074	.074	.074	.024	.024	.024	
1.0	.212	.188	.166	.182	.161	.143	.124	.111	.099	.072	.064	.057	.023	.021	.019	
2.0	.204	.164	.130	.175	.141	.112	.120	.098	.078	.069	.057	.046	.022	.018	.015	
3.0	.197	.146	.106	.169	.126	.092	.116	.088	.065	.067	.051	.038	.021	.017	.012	
4.0	.189	.133	.091	.162	.115	.079	.112	.080	.055	.065	.047	.033	.021	.015	.011	
5.0	.182	.123	.080	.156	.106	.069	.107	.074	.049	.062	.044	.029	.020	.014	.010	
6.0	.174	.115	.072	.150	.099	.062	.103	.069	.044	.060	.041	.026	.019	.013	.009	
7.0	.168	.108	.066	.144	.093	.057	.100	.066	.041	.058	.039	.024	.019	.013	.008	
8.0	.161	.102	.061	.139	.089	.054	.096	.062	.038	.056	.037	.023	.018	.012	.007	
9.0	.155	.097	.058	.134	.084	.051	.093	.059	.036	.054	.035	.021	.017	.011	.007	
10.0	.149	.093	.055	.129	.081	.048	.089	.057	.034	.052	.034	.020	.017	.011	.007	

C Range: 0 - 360DEG
C Interval: 30.0DEG
Test Speed: HIGH
Temperature:25.3℃
Operators:
Test Date:2025-03-05

γ Range: 0 - 180DEG
γ Interval: 1.0DEG
Test System:EVERFINE GO-2000B_V1 SYSTEM V2.00.488
Humidity:65.0%
Test Distance:6.360m [K=1.0000]
Remarks:

UGR(Unified Glare Rating) Table

Test:U:24.00V I:0.4658A P:11.18W PF:1.000 Freq:0Hz Lamp Flux:201.648x1 lm											
NAME: SF15-24V-5050-70-DMX-3000K(1)					TYPE:			WEIGHT:			
SPEC.:					DIM.: Length=1m			SERIAL No.:			
MFR.: OLympia lighting					SUR.:			Shielding Angle:			
ceiling/cavity	0.7	0.7	0.5	0.5	0.3	0.7	0.7	0.5	0.5	0.3	
walls	0.5	0.3	0.5	0.3	0.3	0.5	0.3	0.5	0.3	0.3	
working plane	0.2	0.2	0.2	0.2	0.2	0.2	0.2	0.2	0.2	0.2	
Room dimensions		Viewed crosswise					Viewed endwise				
x = 2H y = 2H	23.6	25.1	24.0	25.4	25.7	23.7	25.2	24.1	25.5	25.8	
	3H	25.2	26.5	25.5	26.8	27.1	25.3	26.7	25.7	27.0	27.3
	4H	25.8	27.1	26.2	27.4	27.7	26.0	27.3	26.4	27.6	28.0
	6H	26.2	27.4	26.6	27.8	28.2	26.6	27.8	27.0	28.1	28.5
	8H	26.4	27.5	26.8	27.9	28.3	26.8	27.9	27.2	28.3	28.7
	12H	26.5	27.6	26.9	27.9	28.3	26.9	28.0	27.3	28.4	28.8
4H	2H	24.3	25.5	24.6	25.9	26.2	24.3	25.6	24.7	25.9	26.3
	3H	26.0	27.1	26.4	27.5	27.8	26.1	27.2	26.5	27.6	28.0
	4H	26.7	27.7	27.2	28.1	28.6	26.9	28.0	27.4	28.4	28.8
	6H	27.3	28.2	27.8	28.6	29.1	27.6	28.5	28.1	29.0	29.4
	8H	27.5	28.3	28.0	28.8	29.3	27.9	28.7	28.4	29.2	29.6
	12H	27.6	28.4	28.1	28.9	29.4	28.1	28.9	28.6	29.3	29.8
8H	4H	27.0	27.9	27.5	28.3	28.8	27.2	28.1	27.7	28.5	29.0
	6H	27.8	28.5	28.3	28.9	29.5	28.1	28.8	28.6	29.2	29.8
	8H	28.0	28.7	28.6	29.2	29.7	28.4	29.0	28.9	29.5	30.1
	12H	28.2	28.8	28.8	29.3	29.9	28.7	29.3	29.3	29.8	30.3
12H	4H	27.0	27.8	27.5	28.3	28.8	27.2	28.0	27.7	28.5	29.0
	6H	27.8	28.5	28.4	29.0	29.5	28.1	28.7	28.6	29.2	29.8
	8H	28.2	28.7	28.7	29.2	29.8	28.5	29.1	29.1	29.6	30.2
Variations with the observer position at spacings(CIE Pub.117):											
S = 1.0H	+ 0.1 / - 0.2					+ 0.1 / - 0.2					
1.5H	+ 0.2 / - 0.3					+ 0.2 / - 0.3					
2.0H	+ 0.1 / - 0.3					+ 0.1 / - 0.3					

CIE Pub.117, 201.6 lm Total Lamp Luminous Flux Correct (8log(F/F0) = -5.6)
Area: 0.0115 m2

C Range: 0 - 360DEG
C Interval: 30.0DEG
Test Speed: HIGH
Temperature:25.3℃
Operators:
Test Date:2025-03-05

γ Range: 0 - 180DEG
γ Interval: 1.0DEG
Test System:EVERFINE GO-2000B_V1 SYSTEM V2.00.488
Humidity:65.0%
Test Distance:6.360m [K=1.0000]
Remarks:

UTILIZATION FACTORS TABLE

Test:U:24.00V I:0.4658A P:11.18W PF:1.000 Freq:0Hz Lamp Flux:201.648x1 lm		
NAME: SF15-24V-5050-70-DMX-3000K(1)	TYPE:	WEIGHT:
SPEC.:	DIM.: Length=1m	SERIAL No.:
MFR.: OLympia lighting	SUR.:	Shielding Angle:

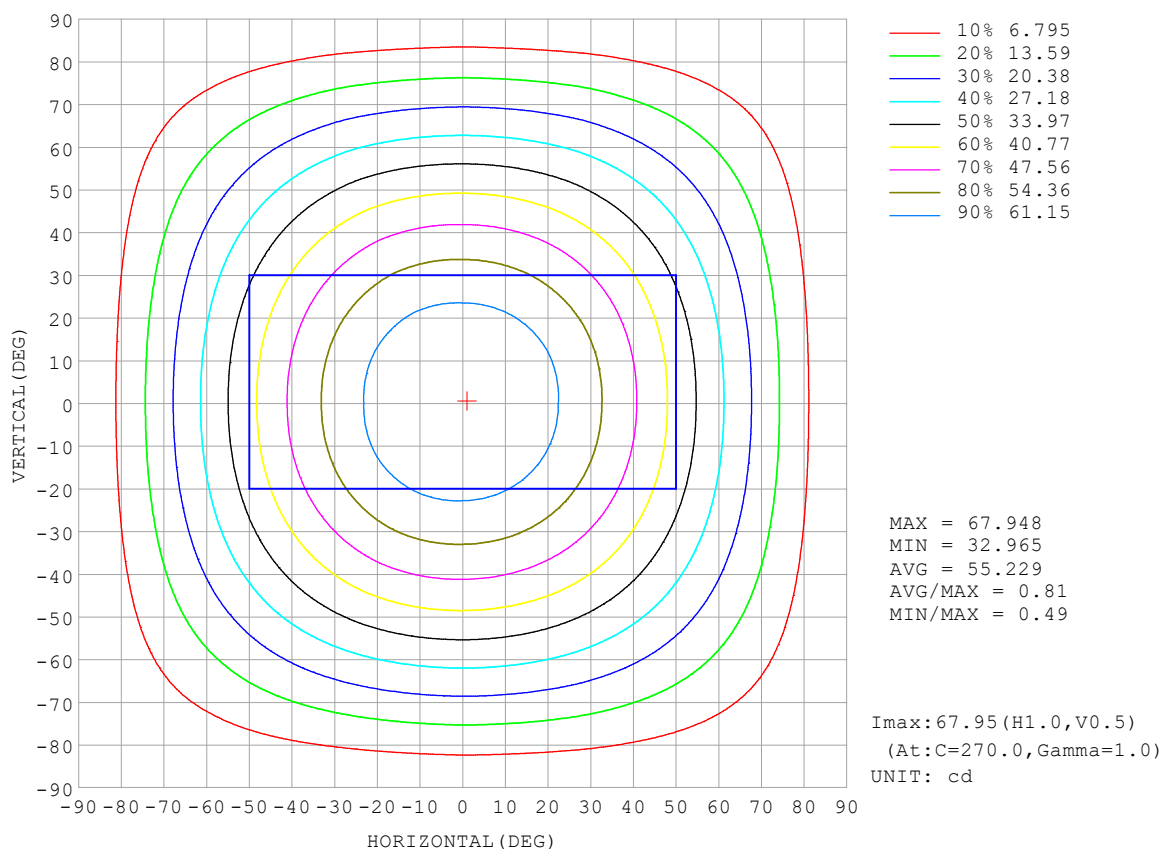
REFLECTANCE										
Ceiling	0.8	0.8	0.8	0.7	0.7	0.7	0.5	0.5	0.5	0
Walls	0.7	0.5	0.3	0.7	0.5	0.3	0.7	0.5	0.3	0
Working plane	0.2	0.2	0.2	0.2	0.2	0.2	0.2	0.2	0.2	0
ROOM INDEX	UTILIZATION FACTORS (PERCENT) $k(RI) \times RCR = 5$									
$k = 0.60$	56	45	38	55	44	37	54	44	37	31
0.80	66	54	47	65	54	47	63	53	46	39
1.00	74	63	56	73	62	55	70	63	55	47
1.25	81	71	63	80	70	63	77	68	62	54
1.50	86	76	69	84	75	68	81	73	67	59
2.00	93	84	78	91	83	77	87	80	75	66
2.50	97	89	83	95	88	82	90	84	80	70
3.00	101	94	88	98	92	86	93	88	84	74
4.00	105	99	94	102	97	92	97	93	89	79
5.00	107	102	98	104	100	96	99	96	92	82
ROOM INDEX	UF (total)									Direct
According to DIN EN 13032-2 2004			Suspended					SHRNOM = 1.25		

C Range: 0 - 360DEG
 C Interval: 30.0DEG
 Test Speed: HIGH
 Temperature: 25.3 °C
 Operators:
 Test Date: 2025-03-05

γ Range: 0 - 180DEG
 γ Interval: 1.0DEG
 Test System: EVERFINE GO-2000B_V1 SYSTEM V2.00.488
 Humidity: 65.0%
 Test Distance: 6.360m [K=1.0000]
 Remarks:

ISOCANDELA DIAGRAM

Test:U:24.00V I:0.4658A P:11.18W PF:1.000 Freq:0Hz Lamp Flux:201.648x1 lm		
NAME: SF15-24V-5050-70-DMX-3000K(1)	TYPE:	WEIGHT:
SPEC.:	DIM.: Length=1m	SERIAL No.:
MFR.: OLympia lighting	SUR.:	Shielding Angle:

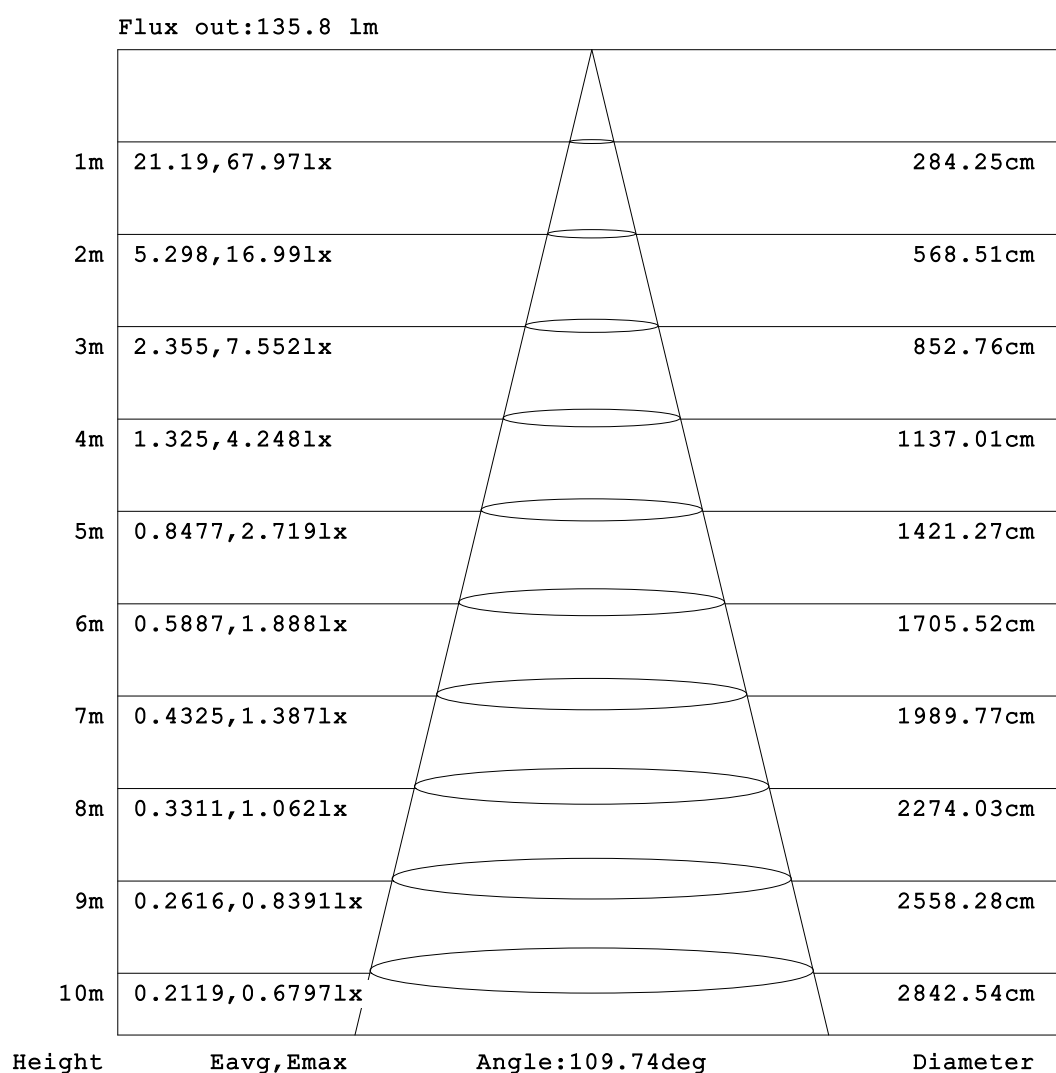


C Range: 0 - 360DEG
C Interval: 30.0DEG
Test Speed: HIGH
Temperature: 25.3°C
Operators:
Test Date: 2025-03-05

γ Range: 0 - 180DEG
γ Interval: 1.0DEG
Test System: EVERFINE GO-2000B_V1 SYSTEM V2.00.488
Humidity: 65.0%
Test Distance: 6.360m [K=1.0000]
Remarks:

AAI Figure

Test:U:24.00V I:0.4658A P:11.18W PF:1.000 Freq:0Hz Lamp Flux:201.648x1 lm		
NAME: SF15-24V-5050-70-DMX-3000K(1)	TYPE:	WEIGHT:
SPEC.:	DIM.: Length=1m	SERIAL No.:
MFR.: OLympia lighting	SUR.:	Shielding Angle:



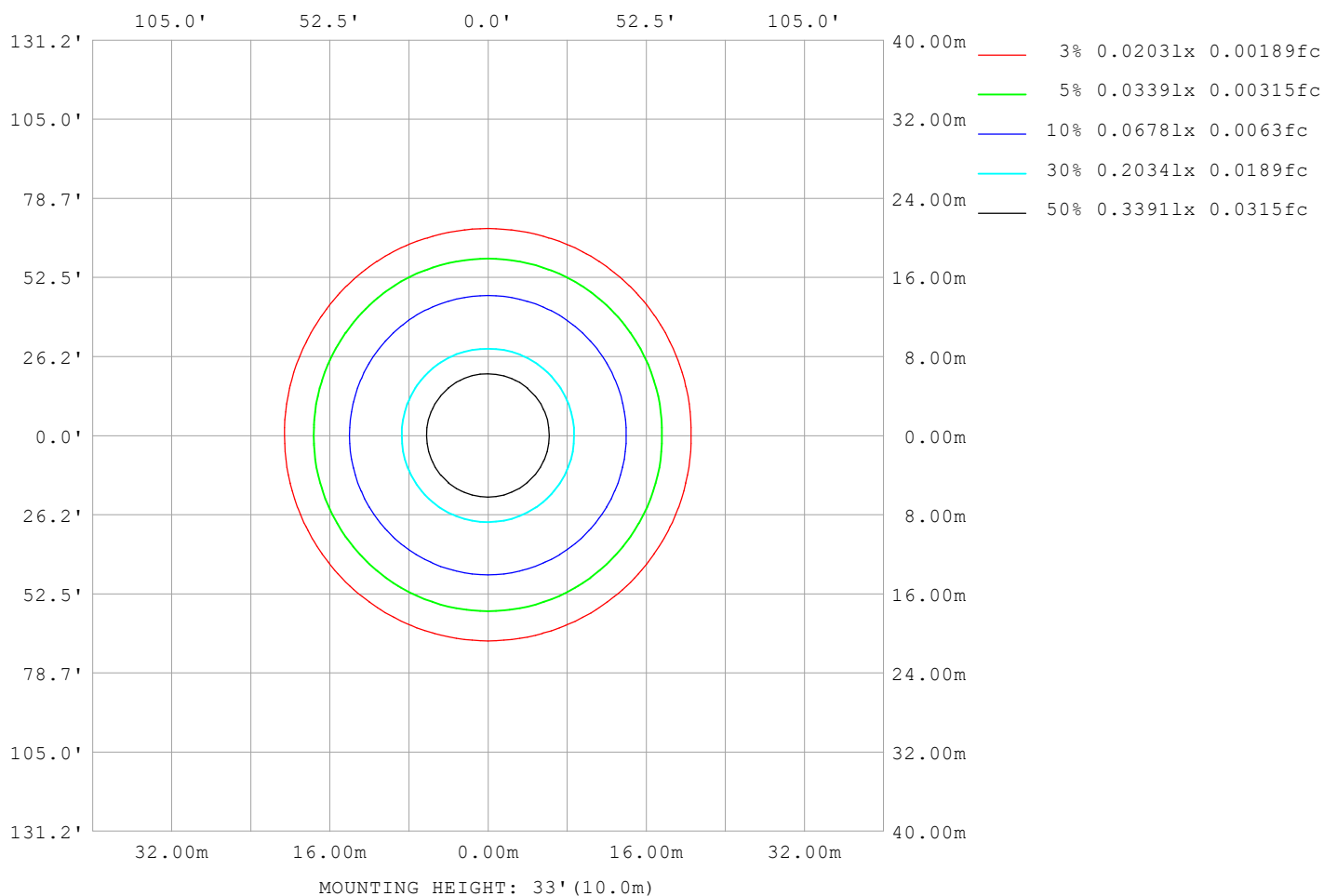
Note:The Curves indicate the illuminated area and the average illumination when the luminaire is at different distance.

C Range: 0 - 360DEG
C Interval: 30.0DEG
Test Speed: HIGH
Temperature:25.3℃
Operators:
Test Date:2025-03-05

γ Range: 0 - 180DEG
γ Interval: 1.0DEG
Test System:EVERFINE GO-2000B_V1 SYSTEM V2.00.488
Humidity:65.0%
Test Distance:6.360m [K=1.0000]
Remarks:

ISOLUX DIAGRAM

Test:U:24.00V I:0.4658A P:11.18W PF:1.000 Freq:0Hz Lamp Flux:201.648x1 lm		
NAME: SF15-24V-5050-70-DMX-3000K(1)	TYPE:	WEIGHT:
SPEC.:	DIM.: Length=1m	SERIAL No.:
MFR.: OLympia lighting	SUR.:	Shielding Angle:



C Range: 0 - 360DEG
C Interval: 30.0DEG
Test Speed: HIGH
Temperature:25.3℃
Operators:
Test Date:2025-03-05

γ Range: 0 - 180DEG
γ Interval: 1.0DEG
Test System:EVERFINE GO-2000B_V1 SYSTEM V2.00.488
Humidity:65.0%
Test Distance:6.360m [K=1.0000]
Remarks:

LED Avg.L Report

Test:U:24.00V I:0.4658A P:11.18W PF:1.000 Freq:0Hz Lamp Flux:201.648x1 lm		
NAME: SF15-24V-5050-70-DMX-3000K(1)	TYPE:	WEIGHT:
SPEC.:	DIM.: Length=1m	SERIAL No.:
MFR.: OLympia lighting	SUR.:	Shielding Angle:

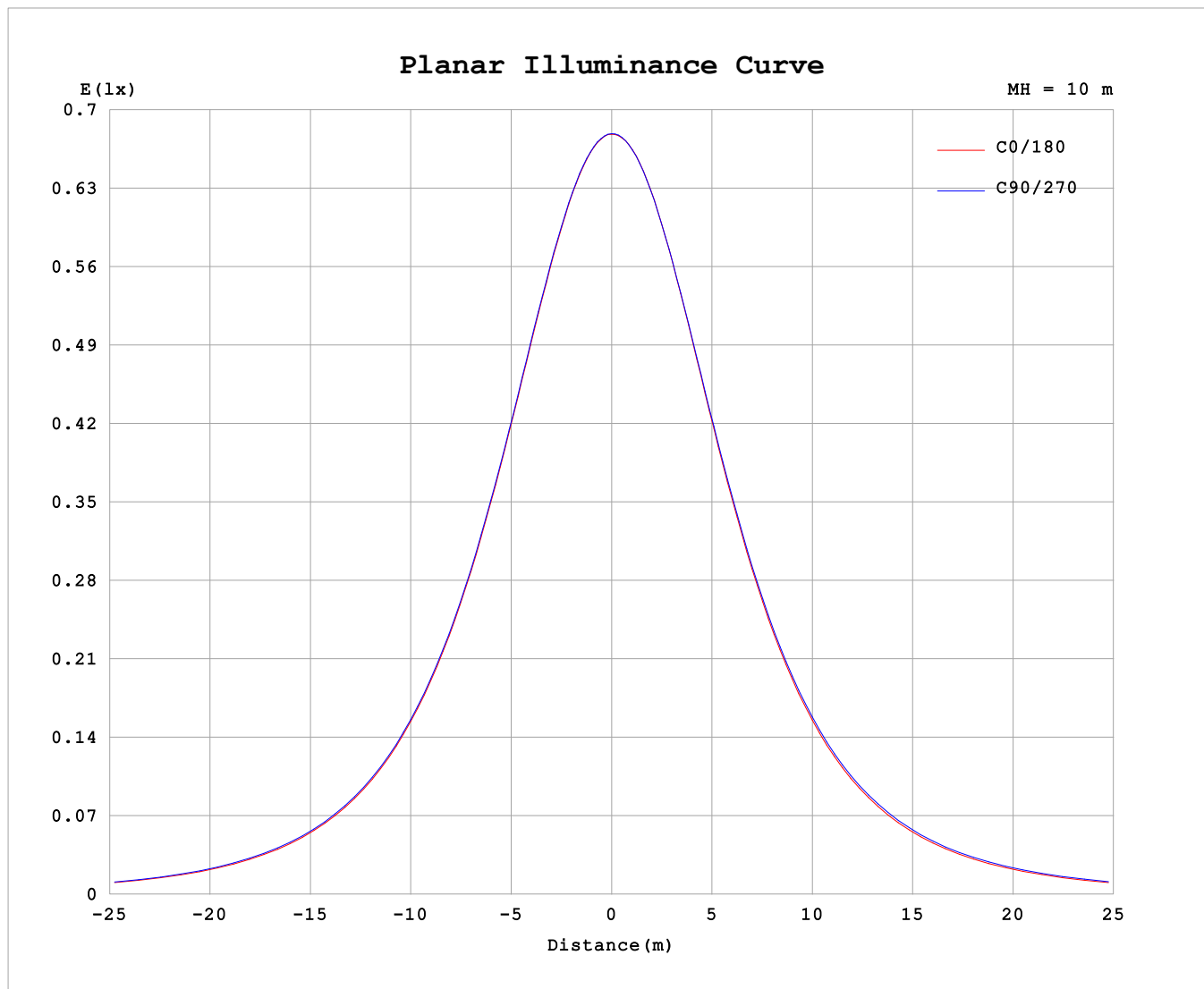
AvgL	cd/m2
L_0~180 (65) av	4793
L_0~180 (75) av	4324
L_0~180 (85) av	3341
L_90~270 (65) av	5037
L_90~270 (75) av	4828
L_90~270 (85) av	4908
L_45 (65) av	4942
L_45 (75) av	4584
L_45 (85) av	3986

Standard: GB/T 29293-2012

C Range: 0 - 360DEG
C Interval: 30.0DEG
Test Speed: HIGH
Temperature:25.3℃
Operators:
Test Date:2025-03-05

γ Range: 0 - 180DEG
γ Interval: 1.0DEG
Test System:EVERFINE GO-2000B_V1 SYSTEM V2.00.488
Humidity:65.0%
Test Distance:6.360m [K=1.0000]
Remarks:

Planar Illuminance Curve



C Range: 0 - 360DEG
C Interval: 30.0DEG
Test Speed: HIGH
Temperature: 25.3 °C
Operators:
Test Date: 2025-03-05

γ Range: 0 - 180DEG
 γ Interval: 1.0DEG
Test System: EVERFINE GO-2000B_V1 SYSTEM V2.00.488
Humidity: 65.0%
Test Distance: 6.360m [K=1.0000]
Remarks:

LUMINOUS DISTRIBUTION INTENSITY DATA

Test:U:24.00V I:0.4658A P:11.18W PF:1.000 Freq:0Hz Lamp Flux:201.648x1 lm																	
NAME: SF15-24V-5050-70-DMX-3000K(1)									TYPE:						WEIGHT:		
SPEC.:									DIM.: Length=1m						SERIAL No.:		
MFR.: OLYMPIA lighting									SUR.:						Shielding Angle:		

Table--1

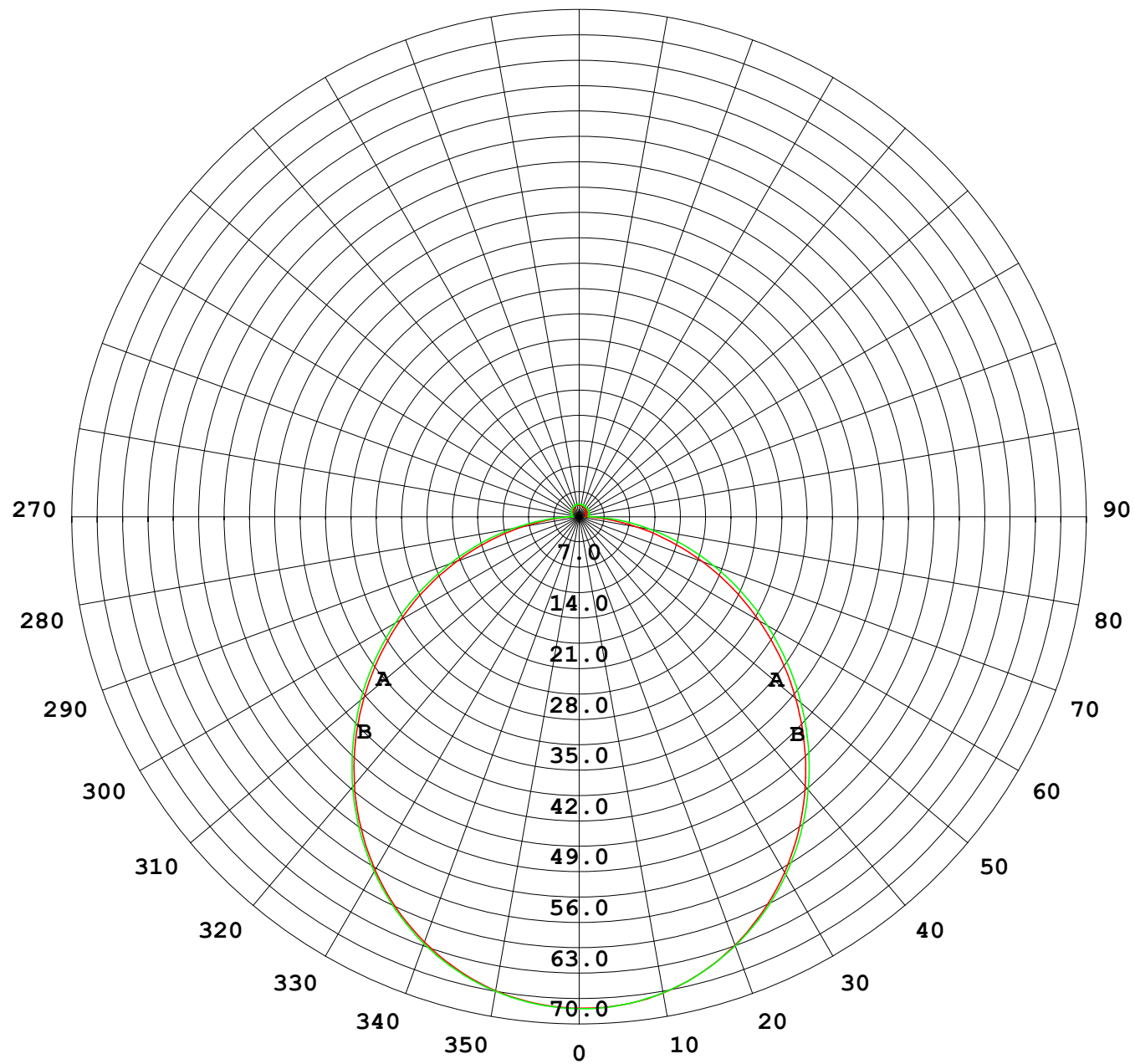
UNIT: cd

C (DEG) γ (DEG)	0	30	60	90	120	150	180	210	240	270	300	330						
0	67.9	67.9	67.9	67.9	67.9	67.9	67.9	67.9	67.9	67.9	67.9	67.9						
5	67.5	67.5	67.5	67.5	67.6	67.6	67.7	67.7	67.6	67.6	67.6	67.6						
10	66.4	66.5	66.5	66.5	66.6	66.8	66.8	66.9	66.8	66.7	66.7	66.6						
15	64.8	64.9	64.8	64.9	65.1	65.2	65.2	65.4	65.4	65.1	65.1	65.0						
20	62.5	62.6	62.6	62.7	62.9	63.0	63.0	63.2	63.3	63.0	63.0	62.8						
25	59.7	59.8	59.8	59.9	60.2	60.2	60.1	60.5	60.6	60.3	60.2	60.0						
30	56.3	56.4	56.5	56.6	56.9	56.8	56.7	57.2	57.4	57.0	57.0	56.7						
35	52.5	52.6	52.7	52.8	53.1	53.0	52.9	53.4	53.7	53.3	53.2	52.9						
40	48.3	48.4	48.6	48.6	48.9	48.7	48.6	49.1	49.5	49.2	49.1	48.7						
45	43.7	43.9	44.0	44.1	44.3	44.1	44.0	44.5	45.0	44.7	44.6	44.2						
50	38.8	39.0	39.2	39.4	39.4	39.1	39.1	39.6	40.2	40.0	39.9	39.3						
55	33.7	33.9	34.3	34.4	34.3	34.0	33.9	34.5	35.2	35.0	34.9	34.3						
60	28.5	28.7	29.2	29.3	29.1	28.7	28.7	29.2	30.0	30.0	29.9	29.1						
65	23.2	23.5	24.0	24.1	23.8	23.4	23.4	23.9	24.8	24.9	24.7	23.9						
70	18.0	18.3	18.8	19.0	18.6	18.1	18.1	18.6	19.6	19.8	19.6	18.7						
75	12.8	13.2	13.7	13.9	13.4	12.9	12.9	13.4	14.5	14.8	14.5	13.5						
80	7.84	8.21	8.81	9.07	8.46	7.92	7.99	8.48	9.52	10.0	9.58	8.54						
85	3.33	3.58	4.09	4.42	3.81	3.30	3.37	3.81	4.81	5.42	4.85	3.83						
90	1.23	1.26	1.25	0.99	1.09	1.05	1.03	1.23	1.50	1.34	1.44	1.24						
95	1.11	1.17	1.15	1.01	1.02	1.01	0.93	1.13	1.44	1.29	1.27	1.09						
100	1.11	1.17	1.12	1.06	1.03	1.03	0.94	1.13	1.45	1.35	1.26	1.08						
105	1.11	1.18	1.12	1.12	1.08	1.07	0.96	1.13	1.48	1.40	1.28	1.07						
110	1.14	1.21	1.15	1.19	1.13	1.12	1.00	1.17	1.53	1.45	1.32	1.10						
115	1.18	1.25	1.19	1.24	1.21	1.18	1.05	1.22	1.56	1.49	1.35	1.13						
120	1.20	1.28	1.23	1.29	1.26	1.24	1.11	1.26	1.57	1.53	1.36	1.19						
125	1.20	1.29	1.28	1.35	1.31	1.29	1.16	1.30	1.60	1.55	1.40	1.23						
130	1.23	1.30	1.34	1.40	1.36	1.35	1.22	1.33	1.61	1.58	1.43	1.28						
135	1.29	1.32	1.40	1.45	1.41	1.39	1.27	1.37	1.63	1.60	1.46	1.28						
140	1.34	1.37	1.46	1.50	1.45	1.45	1.34	1.41	1.64	1.61	1.50	1.32						
145	1.39	1.43	1.52	1.56	1.51	1.49	1.40	1.45	1.65	1.63	1.52	1.36						
150	1.46	1.51	1.57	1.62	1.55	1.54	1.46	1.51	1.65	1.66	1.55	1.41						
155	1.54	1.58	1.63	1.67	1.60	1.60	1.52	1.55	1.67	1.67	1.62	1.47						
160	1.62	1.62	1.67	1.71	1.65	1.65	1.59	1.60	1.69	1.68	1.66	1.53						
165	1.67	1.66	1.70	1.73	1.69	1.70	1.62	1.65	1.71	1.70	1.70	1.58						
170	1.66	1.72	1.72	1.75	1.72	1.75	1.63	1.70	1.74	1.73	1.73	1.68						
175	1.67	1.74	1.74	1.78	1.76	1.77	1.67	1.72	1.77	1.75	1.76	1.73						
180	1.68	1.76	1.77	1.78	1.77	1.77	1.68	1.75	1.77	1.77	1.78	1.76						

C Range: 0 - 360DEG
C Interval: 30.0DEG
Test Speed: HIGH
Temperature:25.3℃
Operators:
Test Date:2025-03-05

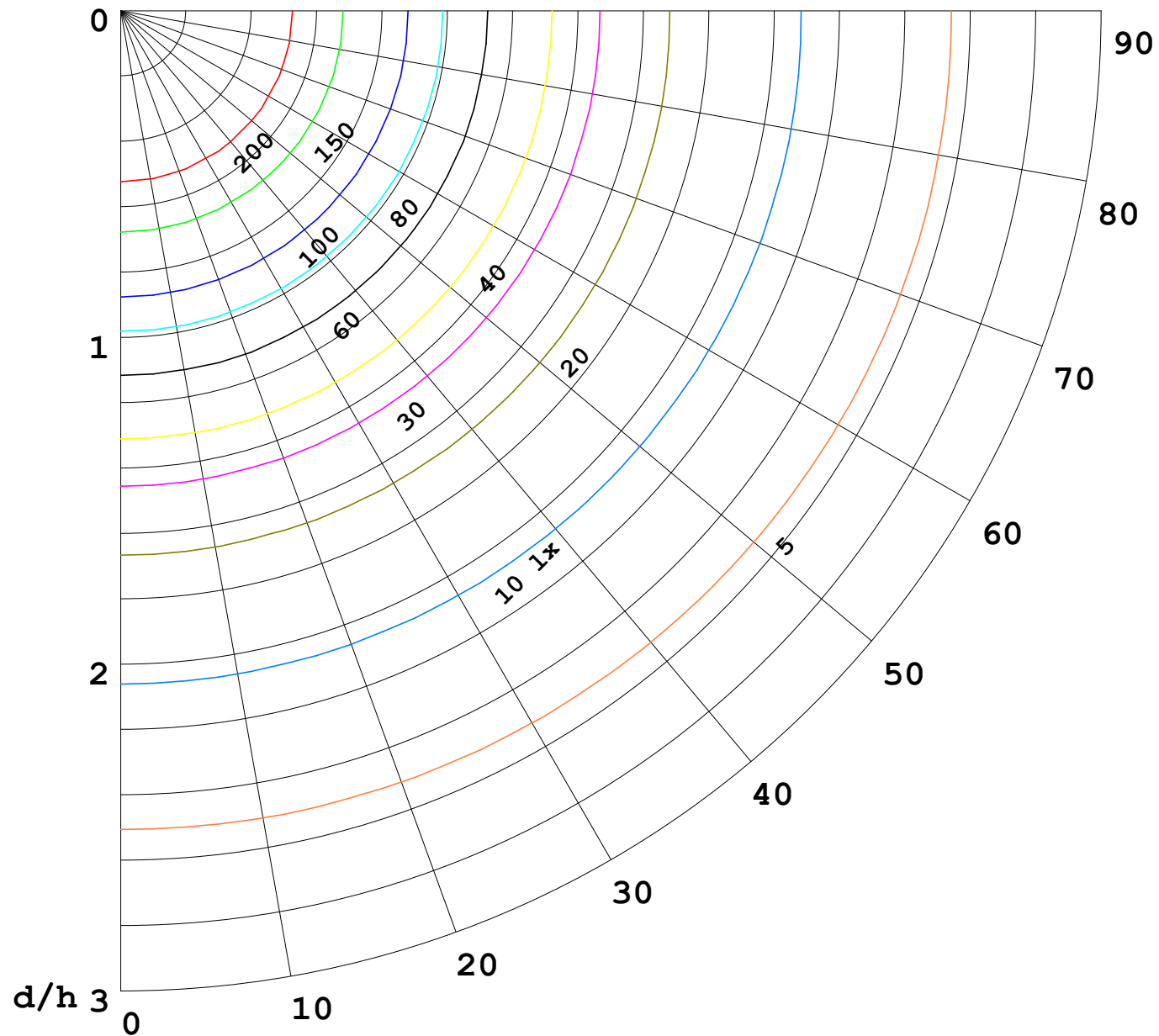
γ Range: 0 - 180DEG
γ Interval: 1.0DEG
Test System:EVERFINE GO-2000B_V1 SYSTEM V2.00.488
Humidity:65.0%
Test Distance:6.360m [K=1.0000]
Remarks:

I (cd)



1000 lm

$\kappa = 1$



	Pcc	Pw	Pfc
_____	70	50	30
=====	50	30	20

