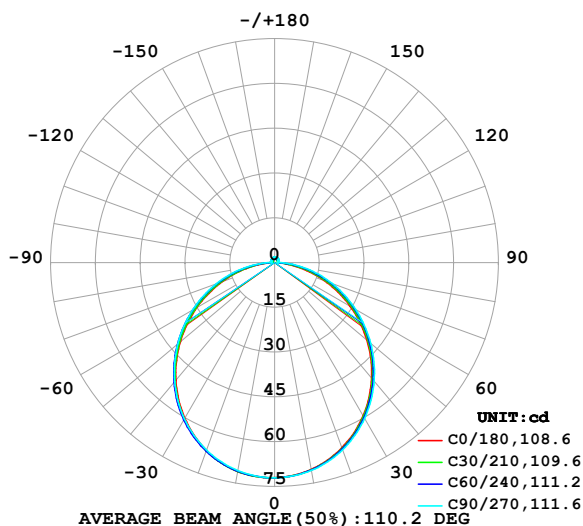


LUMINAIRE PHOTOMETRIC TEST REPORT

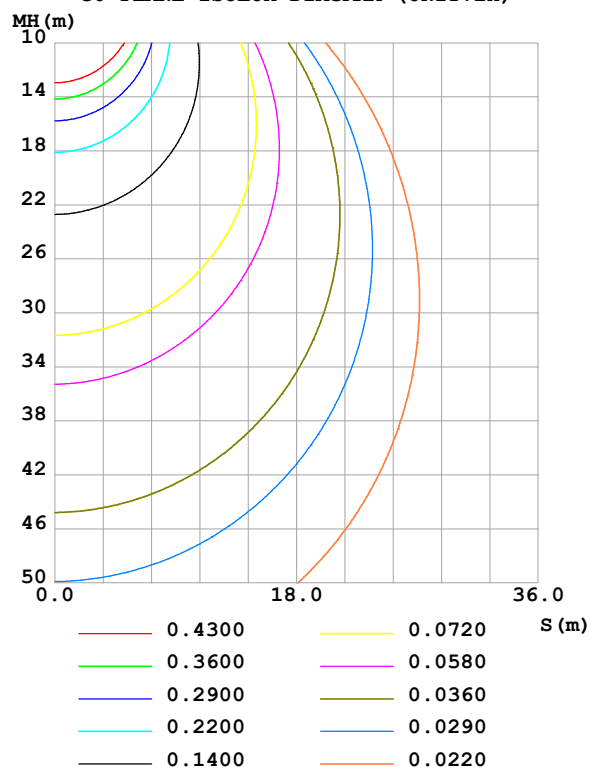
Test:U:24.00V I:0.2431A P:5.834W PF:1.000 Freq:0Hz Lamp Flux:211.355x1 lm		
NAME: SF15-24V-5050-70-DMX-4000K(2)	TYPE:	WEIGHT:
SPEC.:	DIM.: Length=1m	SERIAL No.:
MFR.: OLympia lighting	SUR.:	Shielding Angle:

DATA OF LAMP		PHOTOMETRIC DATA				Eff: 36.23 lm/W
MODEL	5050	Imax (cd)	72.09	S/MH(C0/180)	1.24	
NOMINAL POWER(W)		LOR(%)	100.0	S/MH(C90/270)	1.25	
RATED VOLTAGE(V)	24	TOTAL FLUX(lm)	211.36	η UP,DN(C0-180)	2.0,47.8	
NOMINAL FLUX(lm)	211.355	CIE CLASS	DIRECT	η UP,DN(C180-360)	2.0,48.2	
LAMPS INSIDE	1	η up (%)	4.0	CIBSE SHR NOM	1.25	
TEST VOLTAGE(V)		η down (%)	96.0	CIBSE SHR MAX	1.35	

LUMINOUS INTENSITY DISTRIBUTION DIAGRAM



C0 PLANE ISOLUX DIAGRAM (UNIT:lx)



C Range: 0 - 360DEG
C Interval: 30.0DEG
Test Speed: HIGH
Temperature: 25.3 °C
Operators:
Test Date: 2025-03-05

γ Range: 0 - 180DEG
 γ Interval: 1.0DEG
Test System: EVERFINE GO-2000B_V1 SYSTEM V2.00.488
Humidity: 65.0%
Test Distance: 6.360m [K=1.0000]
Remarks:

ZONAL FLUX DIAGRAM

ZONAL FLUX DIAGRAM:

γ	C0	C45	C90	C135	C180	C225	C270	C315	γ	Φ zone	Φ total	%lum, lamp
10	70.36	70.51	70.69	70.95	71.05	71.03	70.77	70.56	0- 10	6.817	6.817	3.23,3.23
20	65.98	66.32	66.71	66.98	66.92	67.15	66.79	66.40	10- 20	19.48	26.30	12.4,12.4
30	59.28	59.72	60.27	60.44	60.22	60.70	60.45	59.85	20- 30	29.34	55.64	26.3,26.3
40	50.57	51.18	51.86	51.80	51.48	52.15	52.11	51.34	30- 40	35.07	90.71	42.9,42.9
50	40.33	41.22	42.02	41.64	41.22	42.05	42.33	41.39	40- 50	36.02	126.7	60,60
60	29.20	30.41	31.38	30.59	30.07	31.02	31.69	30.54	50- 60	32.31	159.0	75.2,75.2
70	17.74	19.26	20.54	19.33	18.66	19.69	20.80	19.34	60- 70	24.76	183.8	87,87
80	6.825	8.408	10.11	8.572	7.752	8.801	10.22	8.435	70- 80	14.72	198.5	93.9,93.9
90	1.118	1.205	1.040	1.108	0.9300	1.198	1.228	1.225	80- 90	4.419	202.9	96,96
100	1.103	1.174	1.118	1.069	0.9216	1.123	1.230	1.131	90-100	1.209	204.1	96.6,96.6
110	1.183	1.198	1.271	1.200	1.014	1.208	1.332	1.192	100-110	1.220	205.4	97.2,97.2
120	1.299	1.255	1.413	1.348	1.132	1.307	1.407	1.254	110-120	1.238	206.6	97.8,97.8
130	1.408	1.363	1.522	1.470	1.259	1.398	1.467	1.349	120-130	1.211	207.8	98.3,98.3
140	1.494	1.489	1.635	1.574	1.394	1.498	1.531	1.408	130-140	1.120	208.9	98.9,98.9
150	1.529	1.638	1.748	1.681	1.535	1.602	1.635	1.511	140-150	0.9740	209.9	99.3,99.3
160	1.719	1.747	1.831	1.777	1.682	1.718	1.727	1.652	150-160	0.7714	210.7	99.7,99.7
170	1.757	1.841	1.875	1.850	1.734	1.817	1.823	1.808	160-170	0.5020	211.2	99.9,99.9
180	1.788	1.874	1.892	1.885	1.783	1.874	1.889	1.882	170-180	0.1756	211.4	100,100
DEG	LUMINOUS INTENSITY:cd									UNIT:lm		

Conical surface Flux(90deg): 108.9 lm

%lum = 51.5%

%lamp = 51.5%

Conical surface Flux(130deg): 172.56 lm

%lum = 81.6%

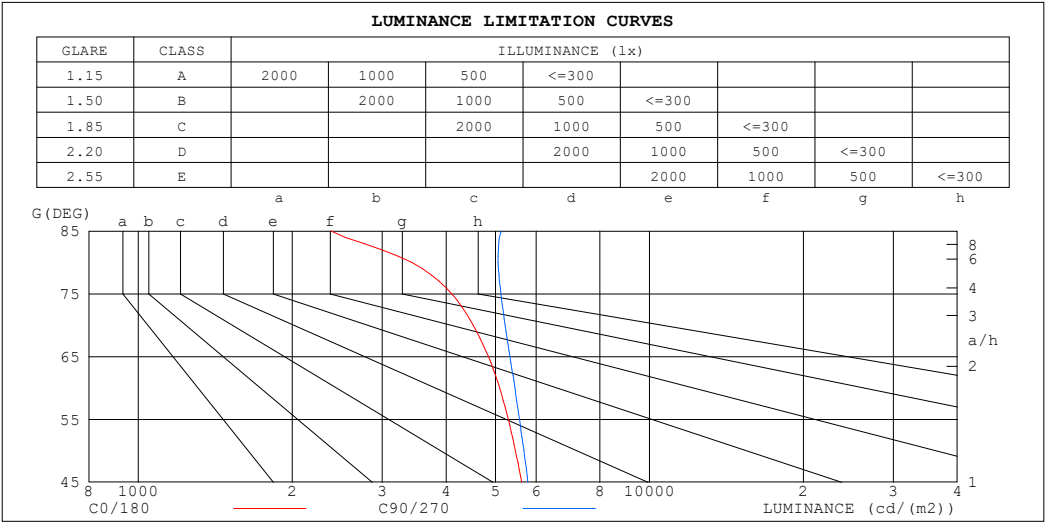
%lamp = 81.6%

C Range: 0 - 360DEG
 C Interval: 30.0DEG
 Test Speed: HIGH
 Temperature:25.3℃
 Operators:
 Test Date:2025-03-05

γ Range: 0 - 180DEG
 γ Interval: 1.0DEG
 Test System:EVERFINE GO-2000B_V1 SYSTEM V2.00.488
 Humidity:65.0%
 Test Distance:6.360m [K=1.0000]
 Remarks:

LUMINANCE LIMITATION CURVES

Test:U:24.00V I:0.2431A P:5.834W PF:1.000 Freq:0Hz Lamp Flux:211.355x1 lm		
NAME: SF15-24V-5050-70-DMX-4000K(2)	TYPE:	WEIGHT:
SPEC.:	DIM.: Length=1m	SERIAL No.:
MFR.: OLympia lighting	SUR.:	Shielding Angle:



LUMINANCE cd/(m2)		
G (DEG)	C0/180	C90/270
85	2381	5128
80	3425	5059
75	4102	5121
70	4520	5219
65	4839	5335
60	5089	5453
55	5292	5565
50	5468	5680
45	5621	5783

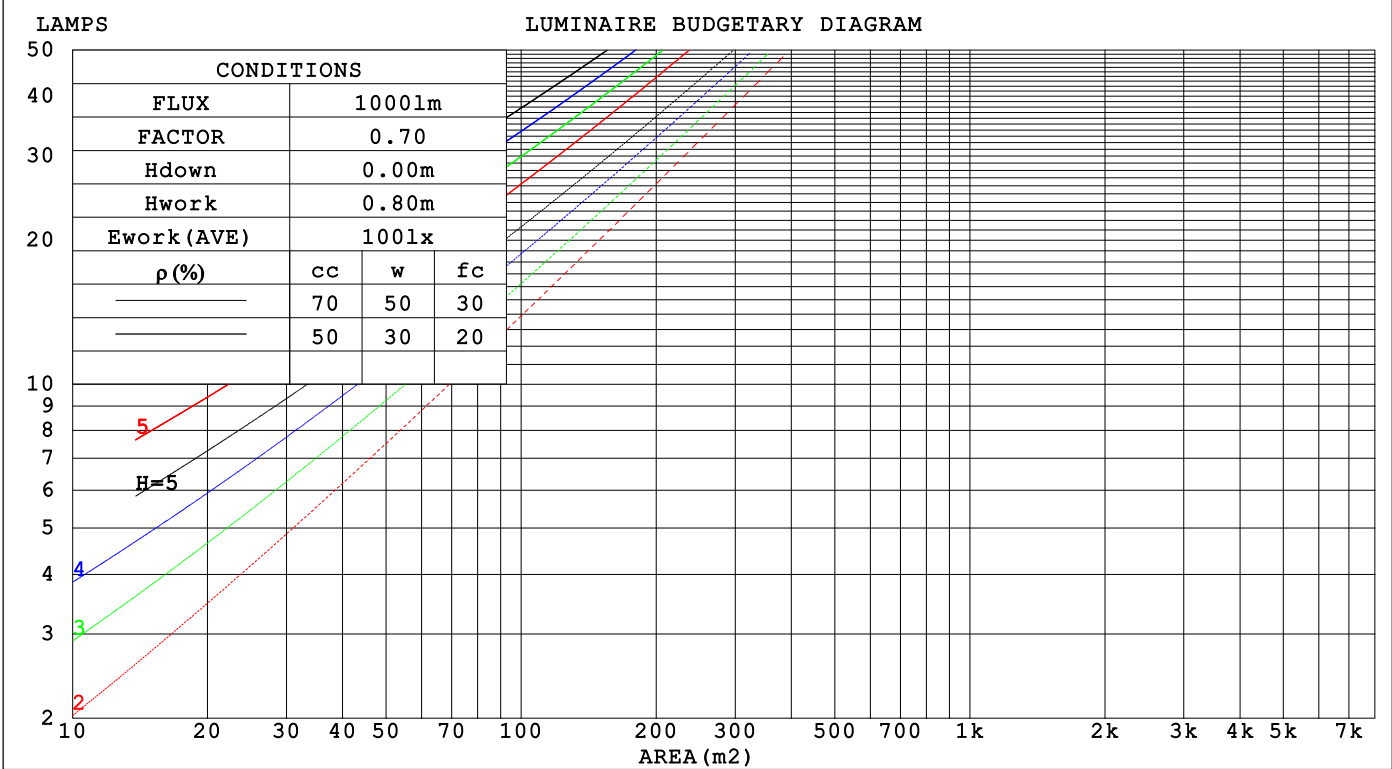
C Range: 0 - 360DEG
C Interval: 30.0DEG
Test Speed: HIGH
Temperature:25.3℃
Operators:
Test Date:2025-03-05

γ Range: 0 - 180DEG
γ Interval: 1.0DEG
Test System:EVERFINE GO-2000B_V1 SYSTEM V2.00.488
Humidity:65.0%
Test Distance:6.360m [K=1.0000]
Remarks:

CU AND LUMINAIRE BUDGETARY ESTIMATE DIAGRAM

Test:U:24.00V I:0.2431A P:5.834W PF:1.000 Freq:0Hz		
Lamp Flux:211.355x1 lm		
NAME: SF15-24V-5050-70-DMX-4000K(2)	TYPE:	WEIGHT:
SPEC.:	DIM.: Length=1m	SERIAL No.:
MFR.: OLYMPIA lighting	SUR.:	Shielding Angle:

pcc	80%			70%			50%			30%			10%			0
p _w	50%	30%	10%	50%	30%	10%	50%	30%	10%	50%	30%	10%	50%	30%	10%	0
p _{fc}	20%			20%			20%			20%			20%			0
RCR	RCR:Room Cavity Ratio															



C Range: 0 - 360DEG

C Interval: 30.0DEG

Test Speed: HIGH

Temperature:25.3℃

Operators:

Test Date:2025-03-05

γ Range: 0 - 180DEG

γ Interval: 1.0DEG

Test System:EVERFINE GO-2000B_V1 SYSTEM V2.00.488

Humidity:65.0%

Test Distance:6.360m [K=1.0000]

Remarks:

WEC AND CCEC

Test:U:24.00V I:0.2431A P:5.834W PF:1.000 Freq:0Hz Lamp Flux:211.355x1 lm		
NAME: SF15-24V-5050-70-DMX-4000K(2)	TYPE:	WEIGHT:
SPEC.:	DIM.: Length=1m	SERIAL No.:
MFR.: OLympia lighting	SUR.:	Shielding Angle:

pcc	80%			70%			50%			30%			10%			0														
pw	50%	30%	10%	50%	30%	10%	50%	30%	10%	50%	30%	10%	50%	30%	10%	0														
pfc	20%			20%			20%			20%			20%			0														
RCR	RCR:Room Cavity Ratio															Wall Exitance Coefficients(WEC)														
0.0																														
1.0	.311	.177	.056	.303	.173	.055	.287	.165	.053	.273	.157	.051	.260	.151	.049															
2.0	.291	.160	.049	.284	.156	.048	.270	.150	.047	.257	.144	.045	.246	.139	.044															
3.0	.269	.143	.043	.262	.140	.042	.250	.135	.041	.239	.131	.040	.228	.126	.039															
4.0	.248	.129	.038	.242	.127	.037	.231	.123	.037	.221	.119	.036	.211	.115	.035															
5.0	.229	.117	.034	.224	.115	.033	.214	.111	.033	.205	.108	.032	.196	.105	.032															
6.0	.212	.106	.030	.208	.105	.030	.199	.102	.030	.190	.099	.029	.183	.096	.029															
7.0	.197	.098	.028	.193	.096	.027	.185	.094	.027	.178	.091	.027	.171	.089	.026															
8.0	.184	.090	.025	.181	.089	.025	.173	.087	.025	.167	.084	.024	.160	.082	.024															
9.0	.173	.084	.023	.169	.083	.023	.163	.081	.023	.157	.079	.022	.151	.077	.022															
10.0	.162	.078	.022	.159	.077	.021	.153	.075	.021	.148	.073	.021	.143	.072	.021															

pcc	80%			70%			50%			30%			10%			0
pw	50%	30%	10%	50%	30%	10%	50%	30%	10%	50%	30%	10%	50%	30%	10%	0
pfc	20%			20%			20%			20%			20%			0
RCR	RCR:Room Cavity Ratio						Ceiling Cavity Exitance Coefficients (CCEC)									
0.0	.221	.221	.221	.189	.189	.189	.129	.129	.129	.074	.074	.074	.024	.024	.024	
1.0	.211	.187	.165	.181	.160	.142	.123	.110	.098	.071	.064	.057	.023	.021	.018	
2.0	.203	.163	.129	.174	.140	.111	.119	.097	.078	.069	.056	.046	.022	.018	.015	
3.0	.195	.145	.105	.167	.125	.091	.115	.087	.064	.066	.051	.038	.021	.017	.012	
4.0	.188	.132	.090	.161	.114	.078	.111	.080	.055	.064	.047	.032	.021	.015	.011	
5.0	.180	.122	.079	.155	.105	.068	.107	.074	.048	.062	.043	.029	.020	.014	.009	
6.0	.173	.113	.071	.149	.098	.062	.103	.069	.044	.060	.040	.026	.019	.013	.009	
7.0	.166	.107	.065	.143	.092	.056	.099	.065	.040	.057	.038	.024	.019	.012	.008	
8.0	.160	.101	.060	.138	.087	.053	.095	.061	.037	.055	.036	.022	.018	.012	.007	
9.0	.154	.096	.057	.133	.083	.050	.092	.059	.035	.053	.035	.021	.017	.011	.007	
10.0	.148	.092	.054	.128	.080	.047	.089	.056	.034	.052	.033	.020	.017	.011	.007	

C Range: 0 - 360DEG
C Interval: 30.0DEG
Test Speed: HIGH
Temperature:25.3℃
Operators:
Test Date:2025-03-05

γ Range: 0 - 180DEG
γ Interval: 1.0DEG
Test System:EVERFINE GO-2000B_V1 SYSTEM V2.00.488
Humidity:65.0%
Test Distance:6.360m [K=1.0000]
Remarks:

UGR(Unified Glare Rating) Table

Test:U:24.00V I:0.2431A P:5.834W PF:1.000 Freq:0Hz Lamp Flux:211.355x1 lm											
NAME: SF15-24V-5050-70-DMX-4000K(2)					TYPE:			WEIGHT:			
SPEC.:					DIM.: Length=1m			SERIAL No.:			
MFR.: OLympia lighting					SUR.:			Shielding Angle:			
ceiling/cavity	0.7	0.7	0.5	0.5	0.3	0.7	0.7	0.5	0.5	0.3	
walls	0.5	0.3	0.5	0.3	0.3	0.5	0.3	0.5	0.3	0.3	
working plane	0.2	0.2	0.2	0.2	0.2	0.2	0.2	0.2	0.2	0.2	
Room dimensions		Viewed crosswise					Viewed endwise				
x = 2H y = 2H	23.6	25.1	23.9	25.3	25.6	23.8	25.3	24.2	25.6	25.9	
	3H	25.0	26.4	25.4	26.7	27.0	25.5	26.8	25.8	27.1	27.4
	4H	25.6	26.9	26.0	27.2	27.5	26.2	27.4	26.5	27.8	28.1
	6H	25.9	27.1	26.3	27.5	27.9	26.7	27.9	27.1	28.3	28.6
	8H	26.0	27.2	26.4	27.5	27.9	27.0	28.1	27.4	28.5	28.8
	12H	26.0	27.2	26.5	27.5	27.9	27.1	28.2	27.5	28.6	29.0
4H	2H	24.2	25.5	24.6	25.8	26.2	24.4	25.7	24.8	26.0	26.4
	3H	25.8	27.0	26.3	27.3	27.7	26.2	27.3	26.6	27.7	28.1
	4H	26.5	27.5	27.0	27.9	28.4	27.1	28.1	27.5	28.5	28.9
	6H	27.0	27.9	27.5	28.3	28.8	27.8	28.7	28.2	29.1	29.6
	8H	27.1	28.0	27.6	28.4	28.9	28.1	28.9	28.5	29.3	29.8
	12H	27.2	27.9	27.7	28.4	28.9	28.3	29.0	28.8	29.5	30.0
8H	4H	26.8	27.7	27.3	28.1	28.6	27.3	28.1	27.8	28.6	29.1
	6H	27.4	28.1	27.9	28.6	29.1	28.2	28.9	28.7	29.3	29.9
	8H	27.6	28.3	28.2	28.7	29.3	28.6	29.2	29.1	29.7	30.2
	12H	27.7	28.3	28.3	28.8	29.3	28.9	29.4	29.4	29.9	30.5
12H	4H	26.8	27.6	27.3	28.1	28.6	27.3	28.1	27.8	28.5	29.0
	6H	27.5	28.1	28.0	28.6	29.2	28.2	28.8	28.7	29.3	29.9
	8H	27.7	28.3	28.3	28.8	29.4	28.6	29.2	29.2	29.7	30.2
Variations with the observer position at spacings(CIE Pub.117):											
S = 1.0H	+ 0.2 / - 0.2					+ 0.1 / - 0.2					
1.5H	+ 0.2 / - 0.3					+ 0.2 / - 0.3					
2.0H	+ 0.2 / - 0.3					+ 0.1 / - 0.2					

CIE Pub.117, 211.4 lm Total Lamp Luminous Flux Correct (8log(F/F0) = -5.4)
Area: 0.0115 m2

C Range: 0 - 360DEG
C Interval: 30.0DEG
Test Speed: HIGH
Temperature:25.3℃
Operators:
Test Date:2025-03-05

γ Range: 0 - 180DEG
γ Interval: 1.0DEG
Test System:EVERFINE GO-2000B_V1 SYSTEM V2.00.488
Humidity:65.0%
Test Distance:6.360m [K=1.0000]
Remarks:

UTILIZATION FACTORS TABLE

Test:U:24.00V I:0.2431A P:5.834W PF:1.000 Freq:0Hz Lamp Flux:211.355x1 lm		
NAME: SF15-24V-5050-70-DMX-4000K(2)	TYPE:	WEIGHT:
SPEC.:	DIM.: Length=1m	SERIAL No.:
MFR.: OLympia lighting	SUR.:	Shielding Angle:

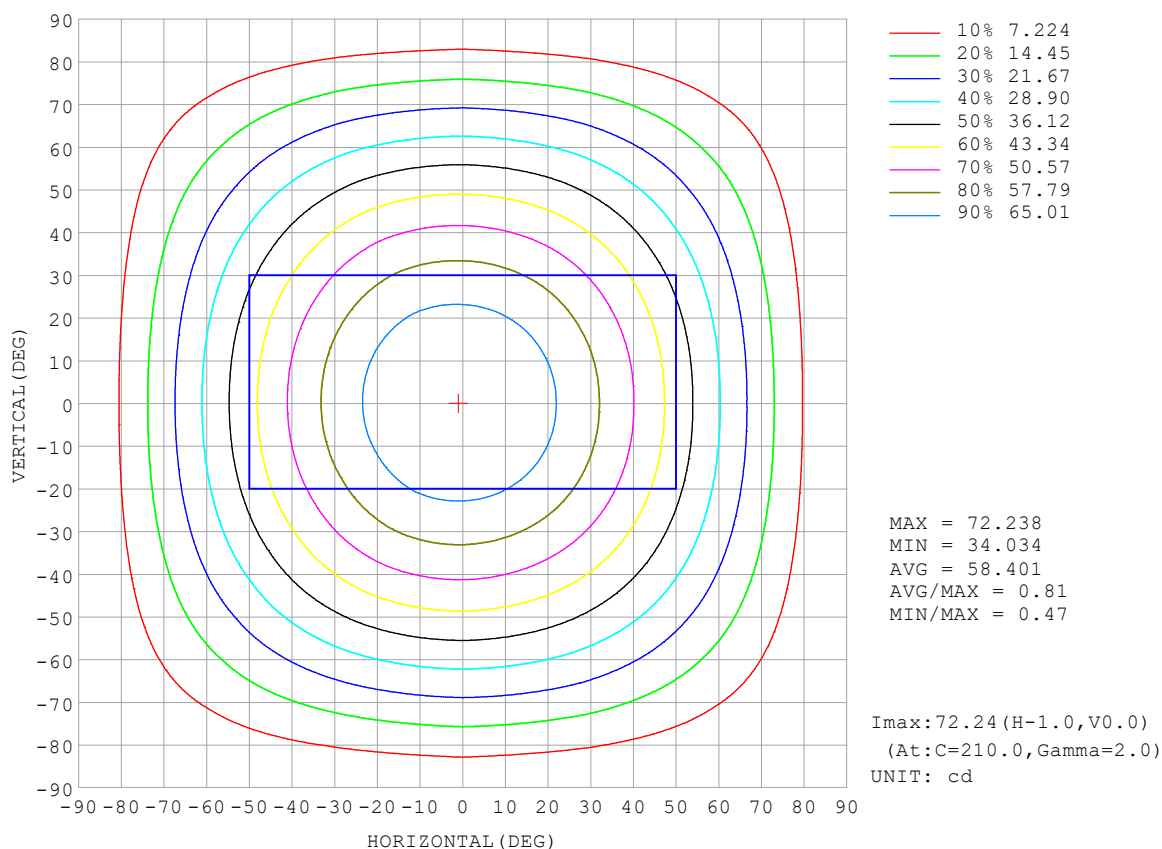
REFLECTANCE										
Ceiling	0.8	0.8	0.8	0.7	0.7	0.7	0.5	0.5	0.5	0
Walls	0.7	0.5	0.3	0.7	0.5	0.3	0.7	0.5	0.3	0
Working plane	0.2	0.2	0.2	0.2	0.2	0.2	0.2	0.2	0.2	0
ROOM INDEX	UTILIZATION FACTORS (PERCENT) $k(RI) \times RCR = 5$									
$k = 0.60$	56	45	38	56	45	38	54	44	38	31
0.80	66	55	47	65	54	47	63	53	47	39
1.00	75	63	56	73	63	56	71	64	55	48
1.25	82	71	64	80	70	63	77	68	62	55
1.50	87	77	70	85	76	69	81	73	68	59
2.00	94	85	78	91	83	77	87	81	75	67
2.50	98	90	83	95	88	82	91	85	80	71
3.00	101	94	88	98	92	87	94	89	84	75
4.00	105	99	94	102	97	93	97	93	89	79
5.00	107	102	98	105	100	96	99	96	93	82
ROOM INDEX	UF(total)									Direct
According to DIN EN 13032-2 2004			Suspended					SHRNOM = 1.25		

C Range: 0 - 360DEG
 C Interval: 30.0DEG
 Test Speed: HIGH
 Temperature: 25.3°C
 Operators:
 Test Date: 2025-03-05

γ Range: 0 - 180DEG
 γ Interval: 1.0DEG
 Test System: EVERFINE GO-2000B_V1 SYSTEM V2.00.488
 Humidity: 65.0%
 Test Distance: 6.360m [K=1.0000]
 Remarks:

ISOCANDELA DIAGRAM

Test:U:24.00V I:0.2431A P:5.834W PF:1.000 Freq:0Hz Lamp Flux:211.355x1 lm		
NAME: SF15-24V-5050-70-DMX-4000K(2)	TYPE:	WEIGHT:
SPEC.:	DIM.: Length=1m	SERIAL No.:
MFR.: OLympia lighting	SUR.:	Shielding Angle:

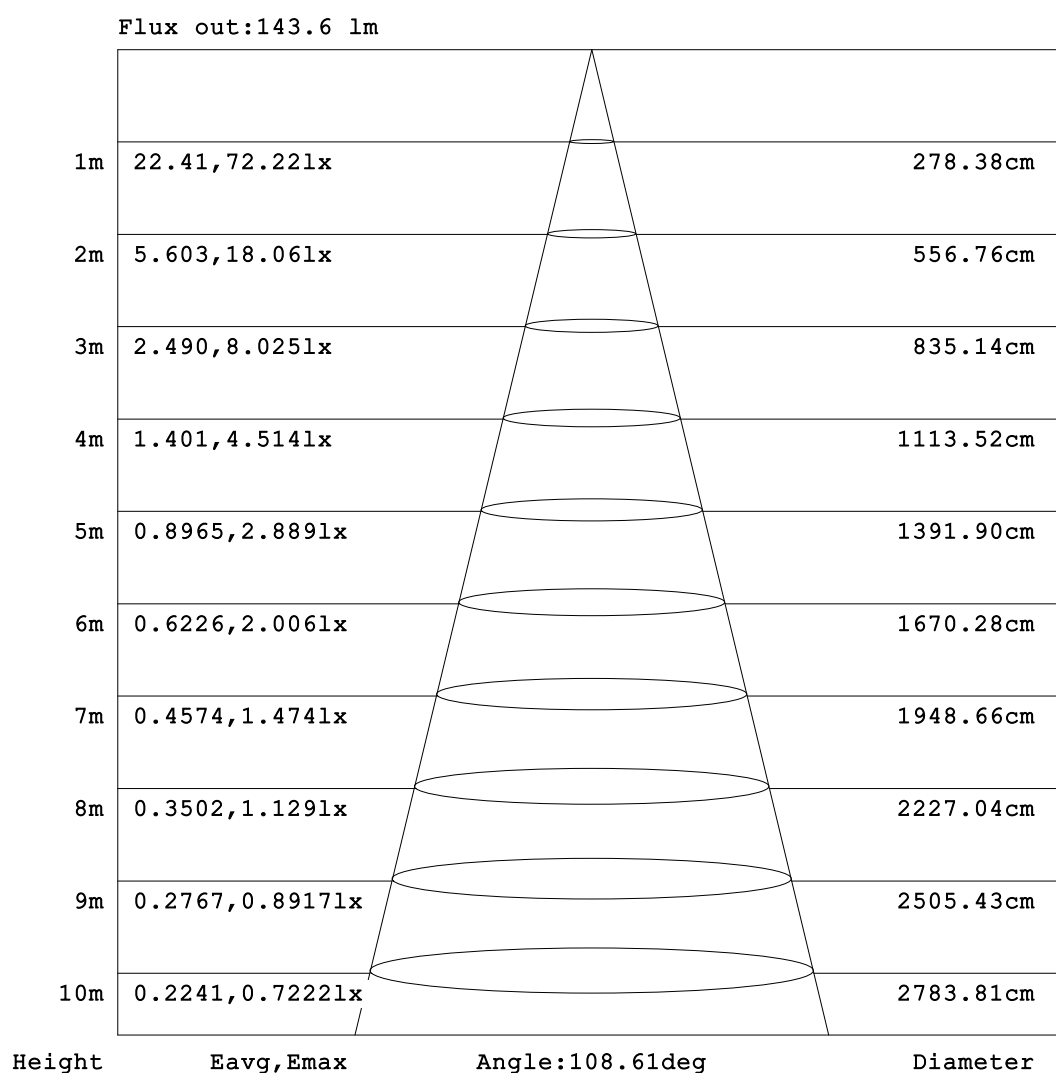


C Range: 0 - 360DEG
C Interval: 30.0DEG
Test Speed: HIGH
Temperature:25.3℃
Operators:
Test Date:2025-03-05

γ Range: 0 - 180DEG
γ Interval: 1.0DEG
Test System:EVERFINE GO-2000B_V1 SYSTEM V2.00.488
Humidity:65.0%
Test Distance:6.360m [K=1.0000]
Remarks:

AAI Figure

Test:U:24.00V I:0.2431A P:5.834W PF:1.000 Freq:0Hz Lamp Flux:211.355x1 lm		
NAME: SF15-24V-5050-70-DMX-4000K(2)	TYPE:	WEIGHT:
SPEC.:	DIM.: Length=1m	SERIAL No.:
MFR.: OLympia lighting	SUR.:	Shielding Angle:



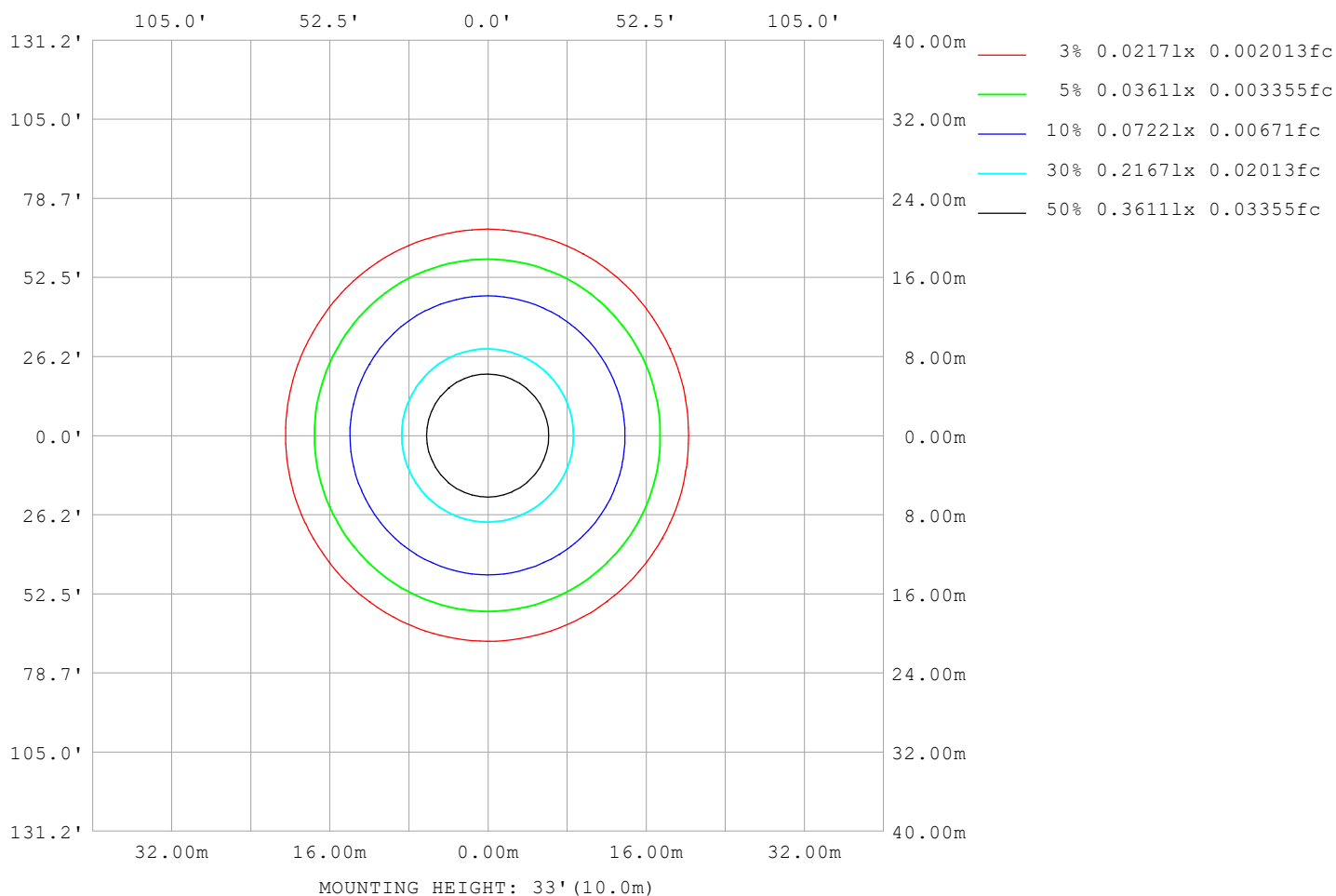
Note:The Curves indicate the illuminated area and the average illumination when the luminaire is at different distance.

C Range: 0 - 360DEG
C Interval: 30.0DEG
Test Speed: HIGH
Temperature:25.3℃
Operators:
Test Date:2025-03-05

γ Range: 0 - 180DEG
γ Interval: 1.0DEG
Test System:EVERFINE GO-2000B_V1 SYSTEM V2.00.488
Humidity:65.0%
Test Distance:6.360m [K=1.0000]
Remarks:

ISOLUX DIAGRAM

Test:U:24.00V I:0.2431A P:5.834W PF:1.000 Freq:0Hz Lamp Flux:211.355x1 lm		
NAME: SF15-24V-5050-70-DMX-4000K(2)	TYPE:	WEIGHT:
SPEC.:	DIM.: Length=1m	SERIAL No.:
MFR.: OLympia lighting	SUR.:	Shielding Angle:



C Range: 0 - 360DEG
C Interval: 30.0DEG
Test Speed: HIGH
Temperature: 25.3°C
Operators:
Test Date: 2025-03-05

γ Range: 0 - 180DEG
γ Interval: 1.0DEG
Test System: EVERFINE GO-2000B_V1 SYSTEM V2.00.488
Humidity: 65.0%
Test Distance: 6.360m [K=1.0000]
Remarks:

LED Avg.L Report

Test:U:24.00V I:0.2431A P:5.834W PF:1.000 Freq:0Hz Lamp Flux:211.355x1 lm		
NAME: SF15-24V-5050-70-DMX-4000K(2)	TYPE:	WEIGHT:
SPEC.:	DIM.: Length=1m	SERIAL No.:
MFR.: OLympia lighting	SUR.:	Shielding Angle:

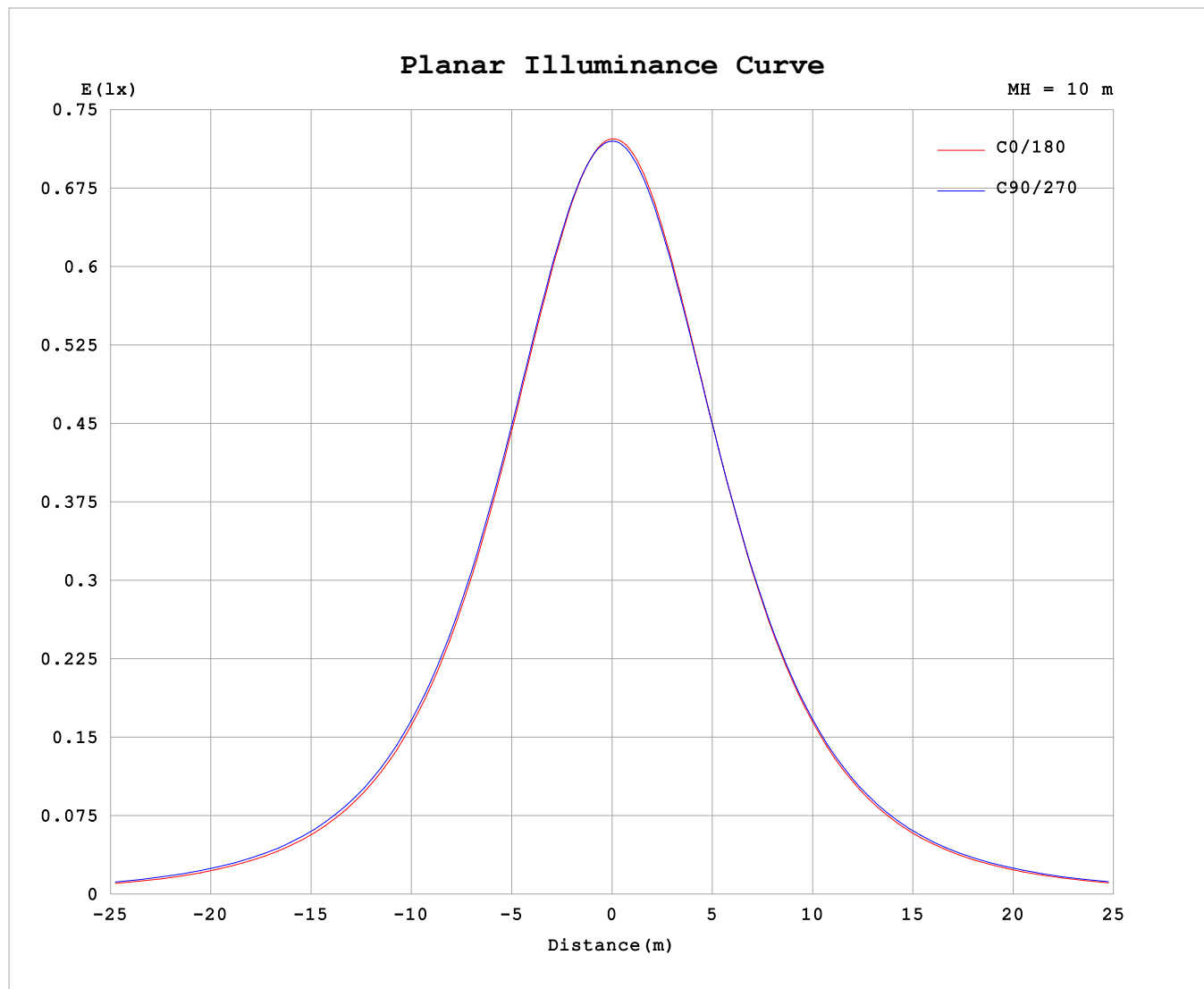
AvgL	cd/m2
L_0~180 (65) av	4918
L_0~180 (75) av	4247
L_0~180 (85) av	2585
L_90~270 (65) av	5368
L_90~270 (75) av	5155
L_90~270 (85) av	5154
L_45 (65) av	5151
L_45 (75) av	4664
L_45 (85) av	3504

Standard: GB/T 29293-2012

C Range: 0 - 360DEG
C Interval: 30.0DEG
Test Speed: HIGH
Temperature:25.3℃
Operators:
Test Date:2025-03-05

γ Range: 0 - 180DEG
γ Interval: 1.0DEG
Test System:EVERFINE GO-2000B_V1 SYSTEM V2.00.488
Humidity:65.0%
Test Distance:6.360m [K=1.0000]
Remarks:

Planar Illuminance Curve



C Range: 0 - 360DEG
C Interval: 30.0DEG
Test Speed: HIGH
Temperature: 25.3 °C
Operators:
Test Date: 2025-03-05

γ Range: 0 - 180DEG
 γ Interval: 1.0DEG
Test System: EVERFINE GO-2000B_V1 SYSTEM V2.00.488
Humidity: 65.0%
Test Distance: 6.360m [K=1.0000]
Remarks:

LUMINOUS DISTRIBUTION INTENSITY DATA

Test:U:24.00V I:0.2431A P:5.834W PF:1.000 Freq:0Hz Lamp Flux:211.355x1 lm																	
NAME: SF15-24V-5050-70-DMX-4000K(2)									TYPE:						WEIGHT:		
SPEC.:									DIM.: Length=1m						SERIAL No.:		
MFR.: OLYMPIA lighting									SUR.:						Shielding Angle:		

Table--1

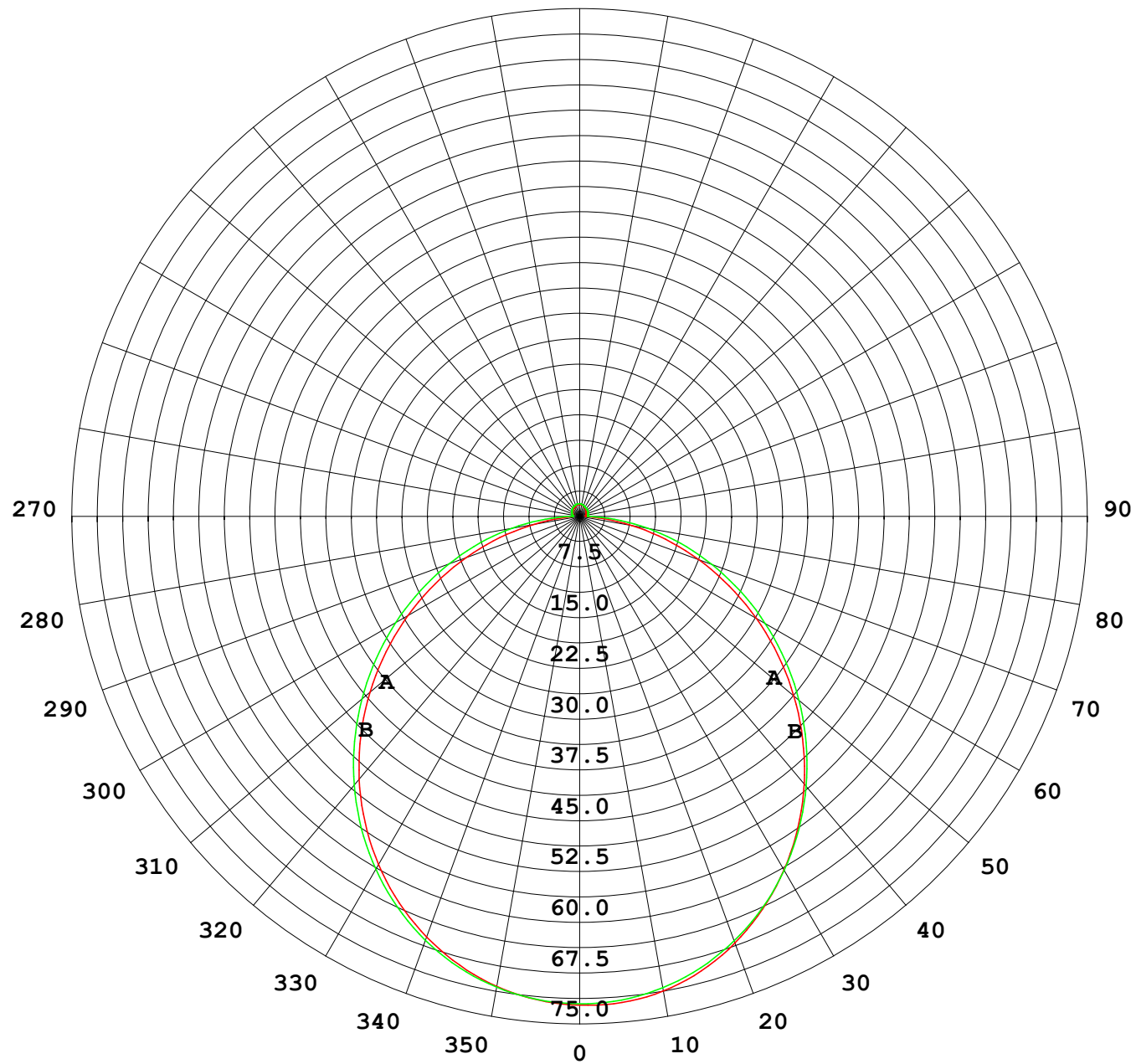
UNIT: cd

C (DEG) γ (DEG)	0	30	60	90	120	150	180	210	240	270	300	330						
0	72.1	72.1	72.1	72.1	72.1	72.1	72.1	72.1	72.1	72.1	72.1	72.1						
5	71.5	71.6	71.6	71.7	71.8	71.9	71.9	71.9	71.8	71.8	71.7	71.6						
10	70.4	70.5	70.5	70.7	70.9	71.0	71.0	71.1	71.0	70.8	70.6	70.5						
15	68.5	68.7	68.8	69.0	69.3	69.3	69.4	69.4	69.4	69.1	68.9	68.7						
20	66.0	66.2	66.4	66.7	67.0	67.0	66.9	67.1	67.2	66.8	66.6	66.2						
25	62.9	63.1	63.4	63.8	64.1	63.9	63.9	64.1	64.3	63.9	63.6	63.2						
30	59.3	59.6	59.9	60.3	60.6	60.3	60.2	60.5	60.9	60.4	60.1	59.6						
35	55.1	55.5	55.9	56.3	56.6	56.2	56.1	56.4	56.9	56.5	56.1	55.5						
40	50.6	51.0	51.4	51.9	52.0	51.6	51.5	51.9	52.5	52.1	51.7	51.0						
45	45.6	46.1	46.6	47.1	47.1	46.6	46.5	46.9	47.6	47.4	46.9	46.1						
50	40.3	40.9	41.5	42.0	41.9	41.3	41.2	41.6	42.5	42.3	41.8	40.9						
55	34.8	35.5	36.3	36.7	36.5	35.8	35.7	36.1	37.1	37.1	36.6	35.5						
60	29.2	30.0	30.9	31.4	31.0	30.2	30.1	30.5	31.6	31.7	31.2	29.9						
65	23.5	24.3	25.4	25.9	25.4	24.5	24.3	24.8	25.9	26.2	25.7	24.2						
70	17.7	18.6	19.9	20.5	19.8	18.9	18.7	19.1	20.3	20.8	20.1	18.6						
75	12.2	13.0	14.5	15.3	14.4	13.4	13.1	13.5	14.8	15.4	14.6	13.0						
80	6.82	7.65	9.17	10.1	9.10	8.05	7.75	8.16	9.45	10.2	9.25	7.62						
85	2.38	2.79	4.05	5.14	4.08	3.10	2.80	3.14	4.36	5.19	4.10	2.79						
90	1.12	1.15	1.26	1.04	1.15	1.07	0.93	1.11	1.29	1.23	1.30	1.15						
95	1.10	1.15	1.18	1.06	1.06	1.03	0.90	1.03	1.20	1.19	1.18	1.09						
100	1.10	1.17	1.18	1.12	1.08	1.05	0.92	1.02	1.22	1.23	1.18	1.08						
105	1.13	1.18	1.20	1.19	1.14	1.11	0.96	1.05	1.26	1.29	1.22	1.08						
110	1.18	1.18	1.22	1.27	1.22	1.18	1.01	1.10	1.31	1.33	1.26	1.12						
115	1.24	1.19	1.24	1.34	1.30	1.24	1.07	1.16	1.35	1.37	1.31	1.17						
120	1.30	1.22	1.29	1.41	1.38	1.31	1.13	1.21	1.40	1.41	1.33	1.18						
125	1.35	1.27	1.34	1.48	1.44	1.38	1.20	1.27	1.44	1.44	1.36	1.26						
130	1.41	1.33	1.40	1.52	1.50	1.44	1.26	1.32	1.48	1.47	1.40	1.30						
135	1.46	1.36	1.47	1.58	1.54	1.50	1.32	1.38	1.51	1.50	1.44	1.29						
140	1.49	1.43	1.55	1.63	1.59	1.56	1.39	1.44	1.55	1.53	1.48	1.34						
145	1.51	1.51	1.63	1.68	1.65	1.61	1.46	1.50	1.60	1.57	1.51	1.40						
150	1.53	1.60	1.68	1.75	1.70	1.67	1.54	1.56	1.65	1.63	1.57	1.46						
155	1.62	1.66	1.73	1.79	1.73	1.72	1.61	1.63	1.70	1.68	1.66	1.52						
160	1.72	1.72	1.78	1.83	1.77	1.78	1.68	1.69	1.75	1.73	1.72	1.59						
165	1.77	1.76	1.80	1.85	1.81	1.82	1.73	1.75	1.80	1.78	1.77	1.65						
170	1.76	1.84	1.84	1.87	1.84	1.86	1.73	1.80	1.84	1.82	1.83	1.79						
175	1.77	1.86	1.87	1.89	1.87	1.88	1.77	1.84	1.88	1.86	1.87	1.84						
180	1.79	1.86	1.88	1.89	1.89	1.88	1.78	1.86	1.88	1.89	1.89	1.87						

C Range: 0 - 360DEG
C Interval: 30.0DEG
Test Speed: HIGH
Temperature:25.3℃
Operators:
Test Date:2025-03-05

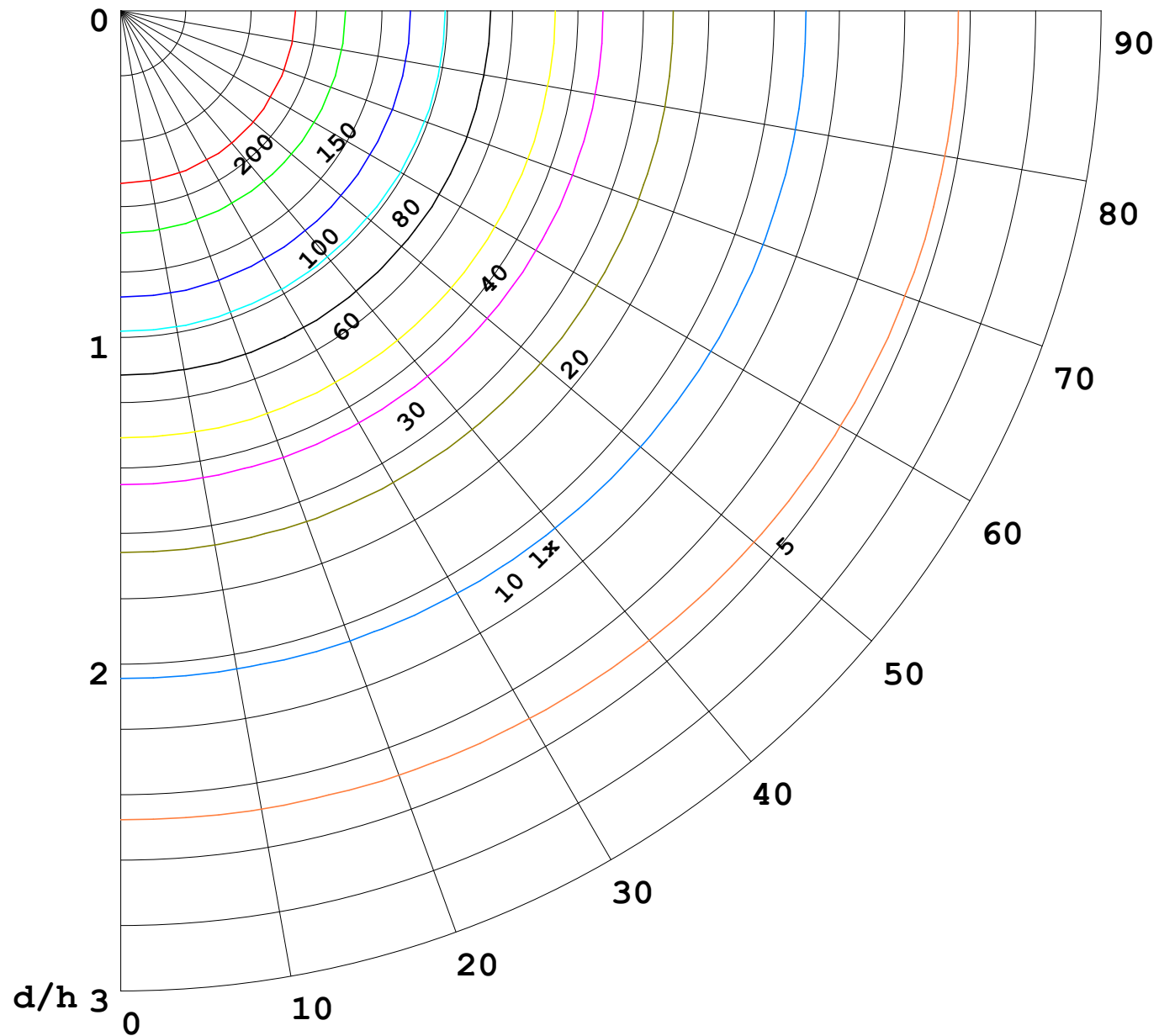
γ Range: 0 - 180DEG
γ Interval: 1.0DEG
Test System:EVERFINE GO-2000B_V1 SYSTEM V2.00.488
Humidity:65.0%
Test Distance:6.360m [K=1.0000]
Remarks:

I (cd)



1000 lm

$\kappa = 1$



F = 1000 lm
 K = 0.7
 Hcc = 0.8 m
 Hfc = 0.0 m
 Eave = 100 lx

	Pcc	Pw	Pfc
————	70	50	30
————	50	30	20

