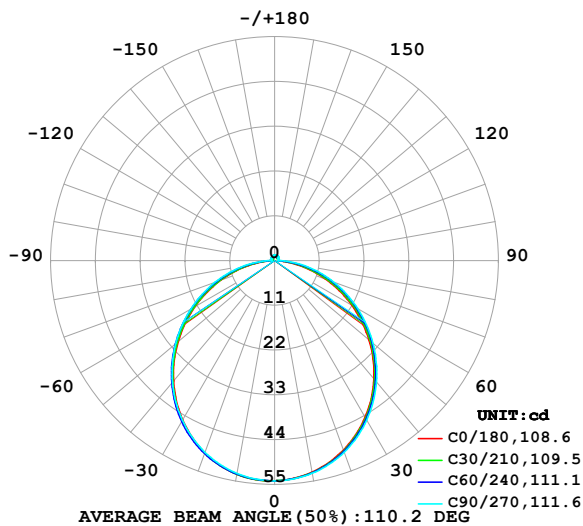


## LUMINAIRE PHOTOMETRIC TEST REPORT

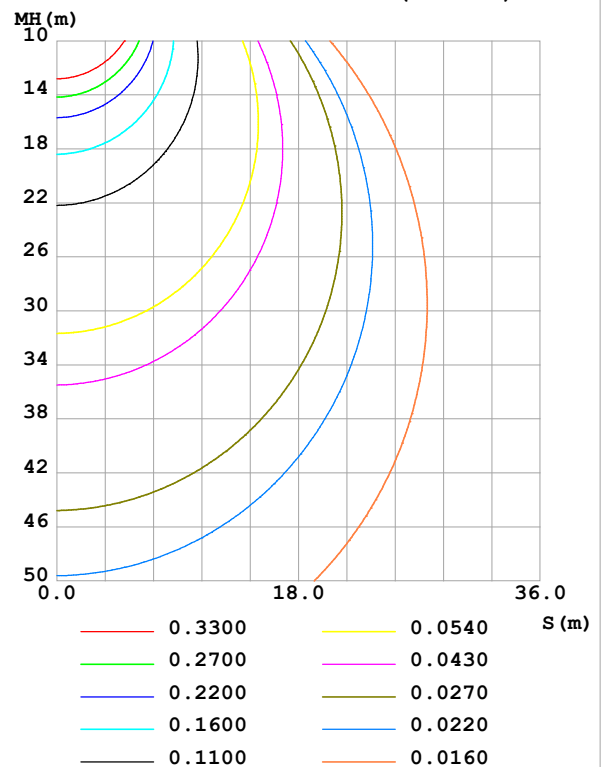
Test:U:24.00V I:0.1935A P:4.644W PF:1.000 Freq:0Hz Lamp Flux:158.452x1 lm		
NAME: SF15-24V-5050-70-DMX-4000K(1)	TYPE:	WEIGHT:
SPEC.:	DIM.: Length=1m	SERIAL No.:
MFR.: OLympia lighting	SUR.:	Shielding Angle:

DATA OF LAMP		PHOTOMETRIC DATA Eff: 34.12 lm/W			
MODEL	5050	I <sub>max</sub> (cd)	54.09	S/MH(C0/180)	1.24
NOMINAL POWER(W)		LOR(%)	100.0	S/MH(C90/270)	1.25
RATED VOLTAGE(V)	24	TOTAL FLUX(lm)	158.47	η UP,DN(C0-180)	2.0,47.8
NOMINAL FLUX(lm)	158.452	CIE CLASS	DIRECT	η UP,DN(C180-360)	2.0,48.2
LAMPS INSIDE	1	η up (%)	4.0	CIBSE SHR NOM	1.25
TEST VOLTAGE(V)		η down (%)	96.0	CIBSE SHR MAX	1.35

LUMINOUS INTENSITY DISTRIBUTION DIAGRAM



C0 PLANE ISOLUX DIAGRAM (UNIT:lx)



C Range: 0 - 360DEG  
C Interval: 30.0DEG  
Test Speed: HIGH  
Temperature:25.3℃  
Operators:  
Test Date:2025-03-05

γ Range: 0 - 180DEG  
γ Interval: 1.0DEG  
Test System:EVERFINE GO-2000B\_V1 SYSTEM V2.00.488  
Humidity:65.0%  
Test Distance:6.360m [K=1.0000]  
Remarks:

## ZONAL FLUX DIAGRAM

## ZONAL FLUX DIAGRAM:

$\gamma$	C0	C45	C90	C135	C180	C225	C270	C315	$\gamma$	$\Phi$ zone	$\Phi$ total	%lum, lamp
10	52.79	52.93	53.06	53.26	53.32	53.30	53.09	52.93	0- 10	5.116	5.116	3.23,3.23
20	49.50	49.77	50.08	50.29	50.23	50.36	50.09	49.79	10- 20	14.62	19.73	12.5,12.5
30	44.46	44.82	45.26	45.36	45.19	45.51	45.30	44.85	20- 30	22.01	41.74	26.3,26.3
40	37.95	38.42	38.94	38.89	38.63	39.11	39.05	38.46	30- 40	26.31	68.05	42.9,42.9
50	30.26	30.94	31.55	31.26	30.93	31.52	31.71	30.99	40- 50	27.02	95.07	60,60
60	21.89	22.82	23.56	22.97	22.55	23.23	23.73	22.85	50- 60	24.23	119.3	75.3,75.3
70	13.29	14.45	15.44	14.51	13.99	14.75	15.56	14.44	60- 70	18.56	137.9	87,87
80	5.100	6.286	7.607	6.427	5.809	6.579	7.625	6.269	70- 80	11.02	148.9	93.9,94
90	0.8390	0.9215	1.344	0.8203	0.6972	0.8875	0.9063	0.9025	80- 90	3.306	152.2	96,96
100	0.8306	0.8781	0.8463	0.7977	0.6916	0.8442	0.9010	0.8475	90-100	0.9153	153.1	96.6,96.6
110	0.8873	0.8974	0.9474	0.8893	0.7665	0.8977	0.9733	0.8821	100-110	0.9100	154.0	97.2,97.2
120	0.9652	0.9308	1.051	0.9990	0.8530	0.9727	1.040	0.9355	110-120	0.9217	154.9	97.8,97.8
130	1.046	1.007	1.132	1.090	0.9395	1.042	1.086	1.006	120-130	0.8994	155.8	98.3,98.3
140	1.115	1.104	1.213	1.175	1.040	1.116	1.138	1.052	130-140	0.8339	156.7	98.9,98.9
150	1.153	1.217	1.305	1.253	1.147	1.199	1.213	1.129	140-150	0.7261	157.4	99.3,99.3
160	1.273	1.307	1.375	1.322	1.256	1.283	1.285	1.234	150-160	0.5754	158.0	99.7,99.7
170	1.323	1.371	1.399	1.383	1.297	1.357	1.354	1.346	160-170	0.3747	158.3	99.9,99.9
180	1.334	1.397	1.409	1.405	1.331	1.397	1.409	1.402	170-180	0.1310	158.5	100,100
DEG	LUMINOUS INTENSITY:cd									UNIT:lm		

Conical surface Flux(90deg): 81.702 lm

%lum = 51.6%

%lamp = 51.6%

Conical surface Flux(130deg): 129.44 lm

%lum = 81.7%

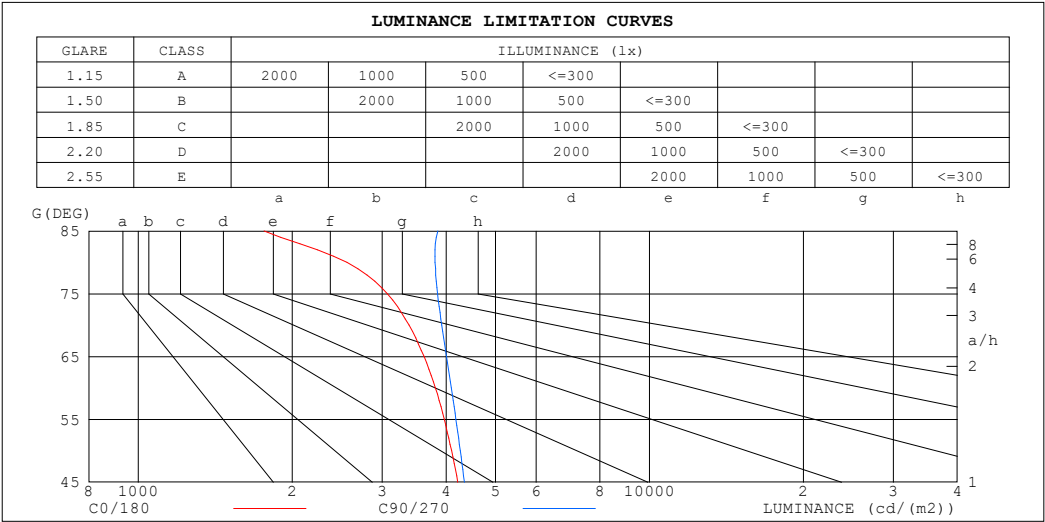
%lamp = 81.7%

C Range: 0 - 360DEG  
 C Interval: 30.0DEG  
 Test Speed: HIGH  
 Temperature:25.3℃  
 Operators:  
 Test Date:2025-03-05

$\gamma$  Range: 0 - 180DEG  
 $\gamma$  Interval: 1.0DEG  
 Test System:EVERFINE GO-2000B\_V1 SYSTEM V2.00.488  
 Humidity:65.0%  
 Test Distance:6.360m [K=1.0000]  
 Remarks:

LUMINANCE LIMITATION CURVES

Test:U:24.00V I:0.1935A P:4.644W PF:1.000 Freq:0Hz Lamp Flux:158.452x1 lm		
NAME: SF15-24V-5050-70-DMX-4000K(1)	TYPE:	WEIGHT:
SPEC.:	DIM.: Length=1m	SERIAL No.:
MFR.: OLympia lighting	SUR.:	Shielding Angle:



LUMINANCE cd/(m2)		
G (DEG)	C0/180	C90/270
85	1763	3857
80	2558	3807
75	3069	3848
70	3384	3922
65	3621	4008
60	3813	4095
55	3967	4181
50	4100	4265
45	4214	4342

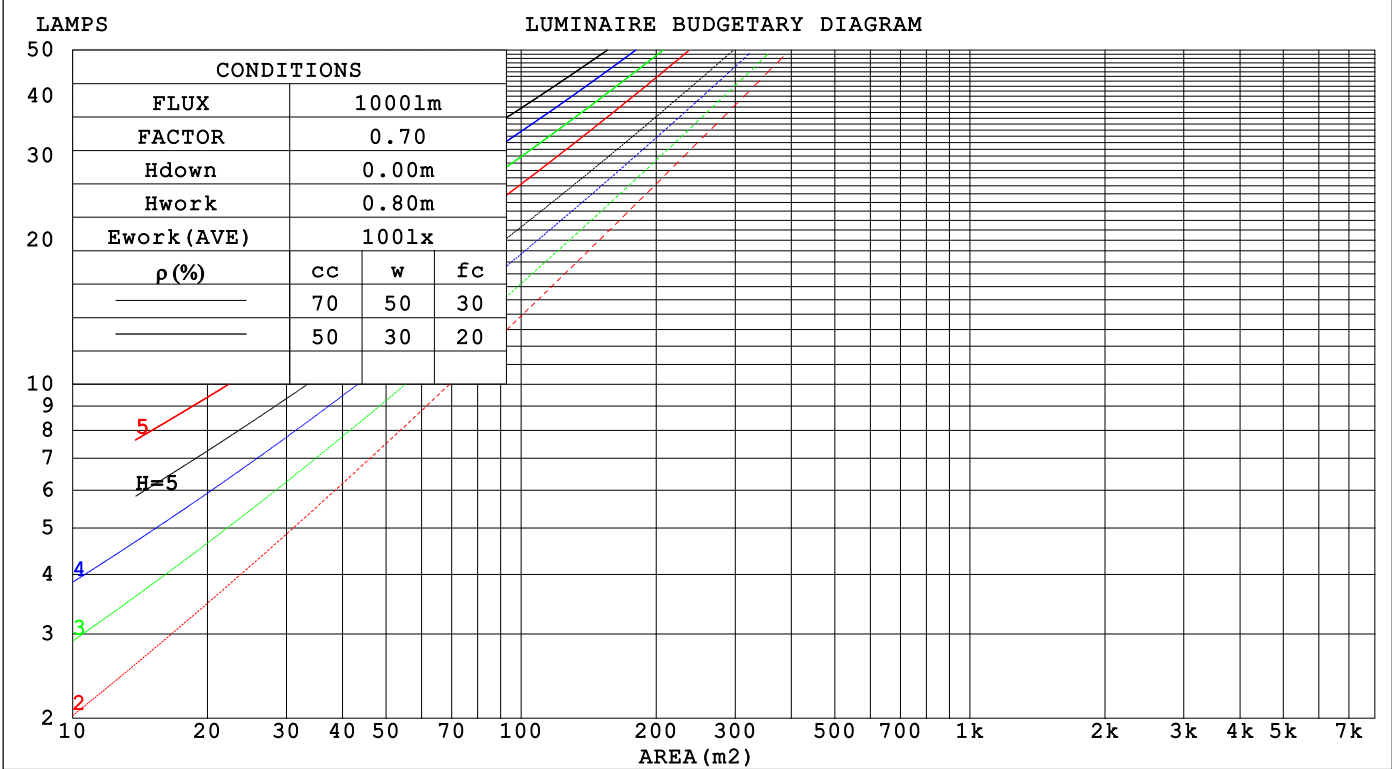
C Range: 0 - 360DEG  
C Interval: 30.0DEG  
Test Speed: HIGH  
Temperature:25.3℃  
Operators:  
Test Date:2025-03-05

γ Range: 0 - 180DEG  
γ Interval: 1.0DEG  
Test System:EVERFINE GO-2000B\_V1 SYSTEM V2.00.488  
Humidity:65.0%  
Test Distance:6.360m [K=1.0000]  
Remarks:

CU AND LUMINAIRE BUDGETARY ESTIMATE DIAGRAM

Test:U:24.00V I:0.1935A P:4.644W PF:1.000 Freq:0Hz		
Lamp Flux:158.452x1 lm		
NAME: SF15-24V-5050-70-DMX-4000K(1)	TYPE:	WEIGHT:
SPEC.:	DIM.: Length=1m	SERIAL No.:
MFR.: OLYMPIA lighting	SUR.:	Shielding Angle:

pcc	80%			70%			50%			30%			10%			0
p <sub>w</sub>	50%	30%	10%	50%	30%	10%	50%	30%	10%	50%	30%	10%	50%	30%	10%	0
p <sub>fc</sub>	20%			20%			20%			20%			20%			0
RCR	RCR:Room Cavity Ratio															



C Range: 0 - 360DEG

C Interval: 30.0DEG

Test Speed: HIGH

Temperature:25.3℃

Operators:

Test Date:2025-03-05

γ Range: 0 - 180DEG

γ Interval: 1.0DEG

Test System:EVERFINE GO-2000B\_V1 SYSTEM V2.00.488

Humidity:65.0%

Test Distance:6.360m [K=1.0000]

Remarks:

## WEC AND CCEC

Test:U:24.00V I:0.1935A P:4.644W PF:1.000 Freq:0Hz Lamp Flux:158.452x1 lm		
NAME: SF15-24V-5050-70-DMX-4000K(1)	TYPE:	WEIGHT:
SPEC.:	DIM.: Length=1m	SERIAL No.:
MFR.: OLympia lighting	SUR.:	Shielding Angle:

pcc	80%			70%			50%			30%			10%			0														
pw	50%	30%	10%	50%	30%	10%	50%	30%	10%	50%	30%	10%	50%	30%	10%	0														
pfc	20%			20%			20%			20%			20%			0														
RCR	RCR:Room Cavity Ratio															Wall Exitance Coefficients(WEC)														
0.0																														
1.0	.311	.177	.056	.303	.173	.055	.287	.165	.053	.273	.157	.051	.260	.151	.049															
2.0	.291	.160	.049	.284	.156	.048	.270	.150	.047	.257	.144	.045	.246	.139	.044															
3.0	.269	.143	.043	.262	.140	.042	.250	.135	.041	.239	.131	.040	.228	.126	.039															
4.0	.248	.129	.038	.242	.127	.037	.231	.123	.037	.221	.119	.036	.211	.115	.035															
5.0	.229	.117	.034	.224	.115	.033	.214	.111	.033	.205	.108	.032	.196	.105	.032															
6.0	.212	.106	.030	.208	.105	.030	.199	.102	.030	.191	.099	.029	.183	.096	.029															
7.0	.197	.098	.028	.193	.096	.027	.185	.094	.027	.178	.091	.027	.171	.089	.026															
8.0	.184	.090	.025	.181	.089	.025	.173	.087	.025	.167	.084	.024	.160	.082	.024															
9.0	.173	.084	.023	.169	.083	.023	.163	.081	.023	.157	.079	.022	.151	.077	.022															
10.0	.162	.078	.022	.159	.077	.021	.153	.075	.021	.148	.073	.021	.143	.072	.021															

pcc	80%			70%			50%			30%			10%			0
pw	50%	30%	10%	50%	30%	10%	50%	30%	10%	50%	30%	10%	50%	30%	10%	0
pfc	20%			20%			20%			20%			20%			0
RCR	RCR:Room Cavity Ratio						Ceiling Cavity Exitance Coefficients (CCEC)									
0.0	.221	.221	.221	.189	.189	.189	.129	.129	.129	.074	.074	.074	.024	.024	.024	
1.0	.211	.187	.165	.180	.160	.142	.123	.110	.098	.071	.064	.057	.023	.021	.018	
2.0	.203	.163	.129	.174	.140	.111	.119	.097	.078	.069	.056	.046	.022	.018	.015	
3.0	.195	.145	.105	.167	.125	.091	.115	.087	.064	.066	.051	.038	.021	.016	.012	
4.0	.188	.132	.090	.161	.114	.078	.111	.079	.055	.064	.047	.032	.021	.015	.011	
5.0	.180	.122	.078	.155	.105	.068	.107	.074	.048	.062	.043	.029	.020	.014	.009	
6.0	.173	.113	.071	.149	.098	.061	.103	.069	.043	.060	.040	.026	.019	.013	.009	
7.0	.166	.106	.065	.143	.092	.056	.099	.065	.040	.057	.038	.024	.019	.012	.008	
8.0	.160	.101	.060	.138	.087	.052	.095	.061	.037	.055	.036	.022	.018	.012	.007	
9.0	.154	.096	.057	.132	.083	.049	.092	.058	.035	.053	.035	.021	.017	.011	.007	
10.0	.148	.092	.054	.128	.080	.047	.089	.056	.033	.052	.033	.020	.017	.011	.007	

C Range: 0 - 360DEG  
C Interval: 30.0DEG  
Test Speed: HIGH  
Temperature:25.3℃  
Operators:  
Test Date:2025-03-05

γ Range: 0 - 180DEG  
γ Interval: 1.0DEG  
Test System:EVERFINE GO-2000B\_V1 SYSTEM V2.00.488  
Humidity:65.0%  
Test Distance:6.360m [K=1.0000]  
Remarks:

UGR(Unified Glare Rating) Table

Test:U:24.00V I:0.1935A P:4.644W PF:1.000 Freq:0Hz Lamp Flux:158.452x1 lm											
NAME: SF15-24V-5050-70-DMX-4000K(1)					TYPE:			WEIGHT:			
SPEC.:					DIM.: Length=1m			SERIAL No.:			
MFR.: OLympia lighting					SUR.:			Shielding Angle:			
ceiling/cavity	0.7	0.7	0.5	0.5	0.3	0.7	0.7	0.5	0.5	0.3	
walls	0.5	0.3	0.5	0.3	0.3	0.5	0.3	0.5	0.3	0.3	
working plane	0.2	0.2	0.2	0.2	0.2	0.2	0.2	0.2	0.2	0.2	
Room dimensions		Viewed crosswise					Viewed endwise				
x = 2H y = 2H	23.6	25.1	23.9	25.3	25.6	23.9	25.3	24.2	25.6	25.9	
	3H	25.0	26.4	25.4	26.7	27.0	25.5	26.8	25.8	27.1	27.4
	4H	25.6	26.9	25.9	27.2	27.5	26.2	27.5	26.5	27.8	28.1
	6H	25.9	27.1	26.3	27.5	27.8	26.8	28.0	27.1	28.3	28.7
	8H	26.0	27.2	26.4	27.5	27.9	27.0	28.1	27.4	28.5	28.9
	12H	26.0	27.2	26.4	27.5	27.9	27.1	28.3	27.5	28.6	29.0
4H	2H	24.2	25.5	24.6	25.8	26.2	24.4	25.7	24.8	26.0	26.4
	3H	25.8	27.0	26.3	27.3	27.7	26.2	27.4	26.7	27.7	28.1
	4H	26.5	27.5	26.9	27.9	28.3	27.1	28.1	27.5	28.5	28.9
	6H	27.0	27.9	27.4	28.3	28.8	27.8	28.7	28.2	29.1	29.6
	8H	27.1	28.0	27.6	28.4	28.9	28.1	28.9	28.5	29.3	29.8
	12H	27.2	27.9	27.6	28.4	28.9	28.3	29.1	28.8	29.5	30.0
8H	4H	26.8	27.7	27.3	28.1	28.6	27.3	28.2	27.8	28.6	29.1
	6H	27.4	28.1	27.9	28.6	29.1	28.2	28.9	28.7	29.4	29.9
	8H	27.6	28.2	28.1	28.7	29.3	28.6	29.2	29.1	29.7	30.2
	12H	27.7	28.3	28.3	28.8	29.3	28.9	29.4	29.4	29.9	30.5
12H	4H	26.8	27.6	27.3	28.1	28.6	27.3	28.1	27.8	28.5	29.0
	6H	27.5	28.1	28.0	28.6	29.2	28.2	28.8	28.7	29.3	29.9
	8H	27.7	28.3	28.3	28.8	29.3	28.6	29.2	29.2	29.7	30.3
Variations with the observer position at spacings(CIE Pub.117):											
S = 1.0H	+ 0.2 / - 0.2					+ 0.1 / - 0.2					
1.5H	+ 0.2 / - 0.3					+ 0.2 / - 0.3					
2.0H	+ 0.2 / - 0.3					+ 0.1 / - 0.2					

CIE Pub.117, 158.5 lm Total Lamp Luminous Flux Correct (8log(F/F0) = -6.4)  
Area: 0.0115 m2

C Range: 0 - 360DEG  
C Interval: 30.0DEG  
Test Speed: HIGH  
Temperature:25.3℃  
Operators:  
Test Date:2025-03-05

γ Range: 0 - 180DEG  
γ Interval: 1.0DEG  
Test System:EVERFINE GO-2000B\_V1 SYSTEM V2.00.488  
Humidity:65.0%  
Test Distance:6.360m [K=1.0000]  
Remarks:

## UTILIZATION FACTORS TABLE

Test:U:24.00V I:0.1935A P:4.644W PF:1.000 Freq:0Hz Lamp Flux:158.452x1 lm		
NAME: SF15-24V-5050-70-DMX-4000K(1)	TYPE:	WEIGHT:
SPEC.:	DIM.: Length=1m	SERIAL No.:
MFR.: OLympia lighting	SUR.:	Shielding Angle:

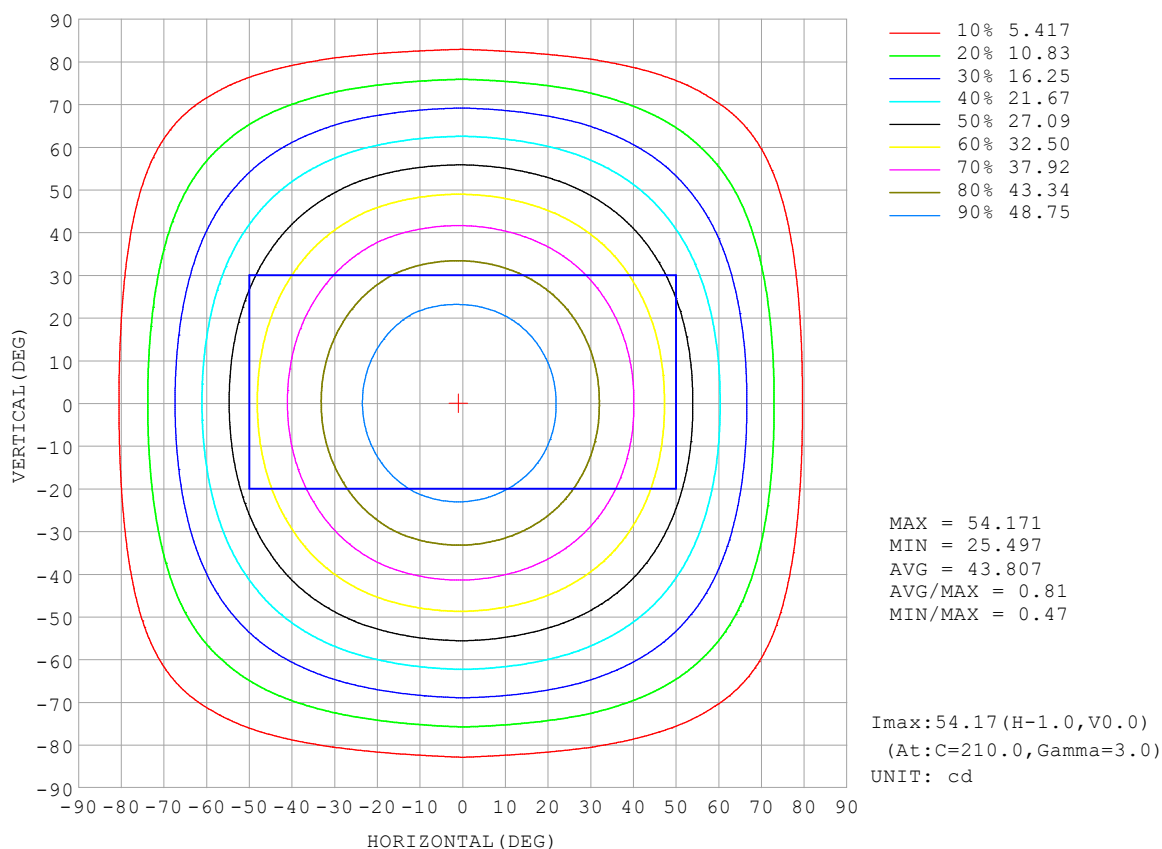
REFLECTANCE										
Ceiling	0.8	0.8	0.8	0.7	0.7	0.7	0.5	0.5	0.5	0
Walls	0.7	0.5	0.3	0.7	0.5	0.3	0.7	0.5	0.3	0
Working plane	0.2	0.2	0.2	0.2	0.2	0.2	0.2	0.2	0.2	0
ROOM INDEX	UTILIZATION FACTORS (PERCENT) $k(RI) \times RCR = 5$									
$k = 0.60$	56	45	38	56	45	38	54	44	38	31
0.80	66	55	47	65	54	47	63	53	47	39
1.00	75	64	56	73	63	56	71	64	55	48
1.25	82	71	64	80	70	63	77	68	62	55
1.50	87	77	70	85	76	69	81	73	68	59
2.00	94	85	78	91	83	77	87	81	75	67
2.50	98	90	83	95	88	82	91	85	80	71
3.00	101	94	88	98	92	87	94	89	84	75
4.00	105	99	94	102	97	93	97	93	89	79
5.00	107	102	98	105	100	96	99	96	93	82
ROOM INDEX	UF (total)									Direct
According to DIN EN 13032-2 2004			Suspended					SHRNOM = 1.25		

C Range: 0 - 360DEG  
 C Interval: 30.0DEG  
 Test Speed: HIGH  
 Temperature: 25.3°C  
 Operators:  
 Test Date: 2025-03-05

γ Range: 0 - 180DEG  
 γ Interval: 1.0DEG  
 Test System: EVERFINE GO-2000B\_V1 SYSTEM V2.00.488  
 Humidity: 65.0%  
 Test Distance: 6.360m [K=1.0000]  
 Remarks:

## ISOCANDELA DIAGRAM

Test:U:24.00V I:0.1935A P:4.644W PF:1.000 Freq:0Hz Lamp Flux:158.452x1 lm		
NAME: SF15-24V-5050-70-DMX-4000K(1)	TYPE:	WEIGHT:
SPEC.:	DIM.: Length=1m	SERIAL No.:
MFR.: OLympia lighting	SUR.:	Shielding Angle:



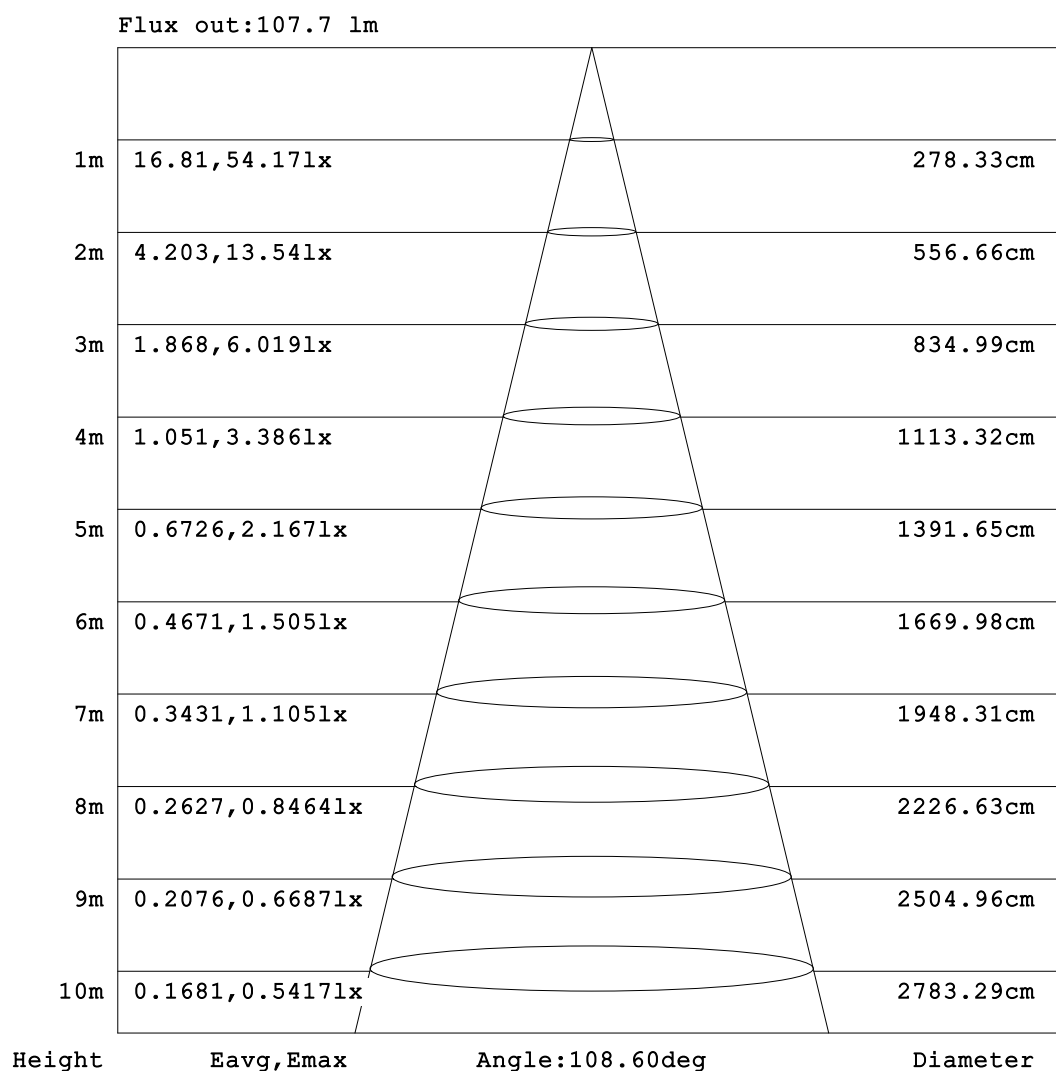
C Range: 0 - 360DEG  
C Interval: 30.0DEG  
Test Speed: HIGH  
Temperature: 25.3°C  
Operators:  
Test Date: 2025-03-05

γ Range: 0 - 180DEG  
γ Interval: 1.0DEG  
Test System: EVERFINE GO-2000B\_V1 SYSTEM V2.00.488  
Humidity: 65.0%  
Test Distance: 6.360m [K=1.0000]  
Remarks:



## AAI Figure

Test:U:24.00V I:0.1935A P:4.644W PF:1.000 Freq:0Hz Lamp Flux:158.452x1 lm		
NAME: SF15-24V-5050-70-DMX-4000K(1)	TYPE:	WEIGHT:
SPEC.:	DIM.: Length=1m	SERIAL No.:
MFR.: OLympia lighting	SUR.:	Shielding Angle:



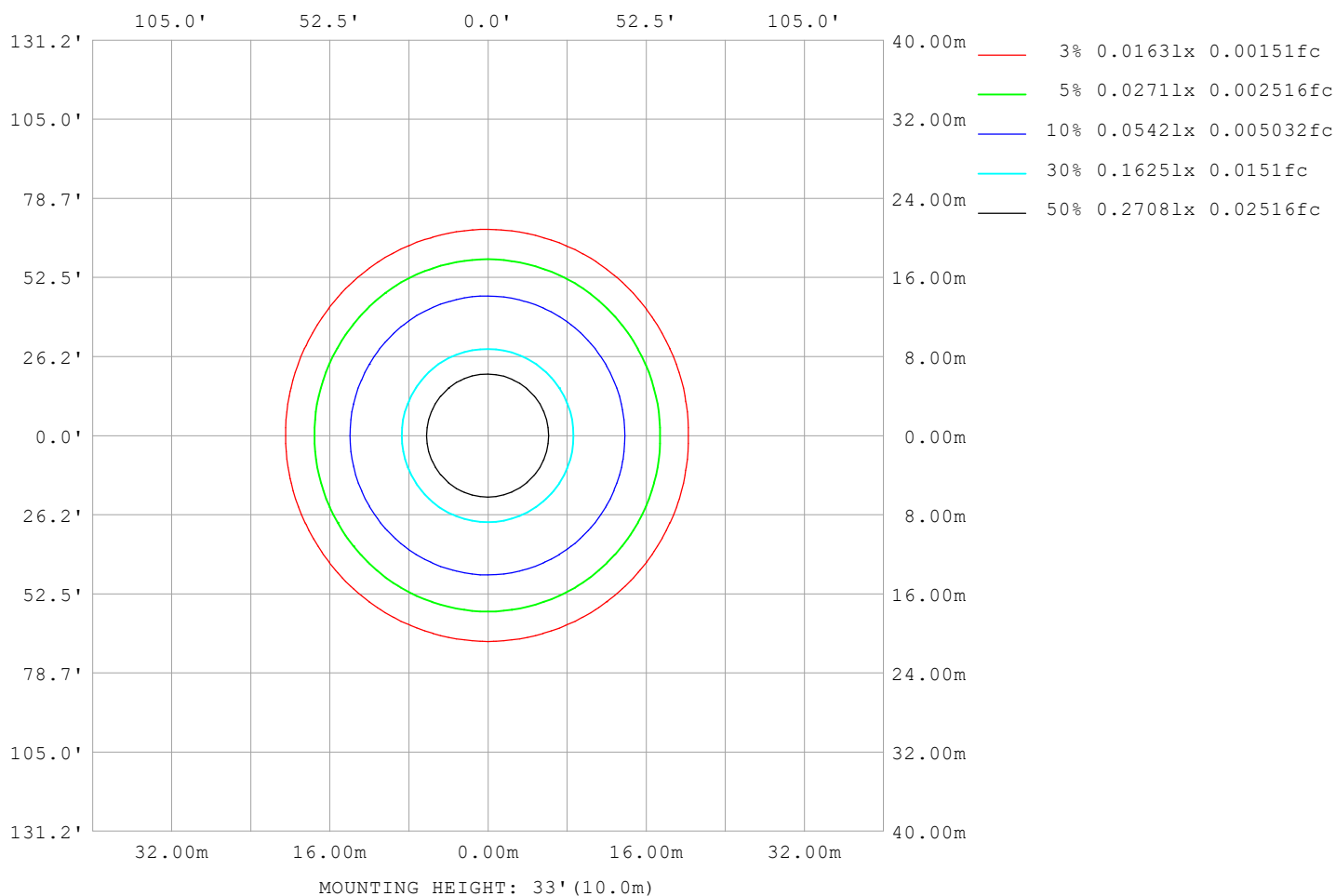
Note: The Curves indicate the illuminated area and the average illumination when the luminaire is at different distance.

C Range: 0 - 360DEG  
C Interval: 30.0DEG  
Test Speed: HIGH  
Temperature: 25.3 °C  
Operators:  
Test Date: 2025-03-05

γ Range: 0 - 180DEG  
γ Interval: 1.0DEG  
Test System: EVERFINE GO-2000B\_V1 SYSTEM V2.00.488  
Humidity: 65.0%  
Test Distance: 6.360m [K=1.0000]  
Remarks:

## ISOLUX DIAGRAM

Test:U:24.00V I:0.1935A P:4.644W PF:1.000 Freq:0Hz Lamp Flux:158.452x1 lm		
NAME: SF15-24V-5050-70-DMX-4000K(1)	TYPE:	WEIGHT:
SPEC.:	DIM.: Length=1m	SERIAL No.:
MFR.: OLympia lighting	SUR.:	Shielding Angle:



C Range: 0 - 360DEG  
C Interval: 30.0DEG  
Test Speed: HIGH  
Temperature: 25.3°C  
Operators:  
Test Date: 2025-03-05

γ Range: 0 - 180DEG  
γ Interval: 1.0DEG  
Test System: EVERFINE GO-2000B\_V1 SYSTEM V2.00.488  
Humidity: 65.0%  
Test Distance: 6.360m [K=1.0000]  
Remarks:

## LED Avg.L Report

Test:U:24.00V I:0.1935A P:4.644W PF:1.000 Freq:0Hz Lamp Flux:158.452x1 lm		
NAME: SF15-24V-5050-70-DMX-4000K(1)	TYPE:	WEIGHT:
SPEC.:	DIM.: Length=1m	SERIAL No.:
MFR.: OLympia lighting	SUR.:	Shielding Angle:

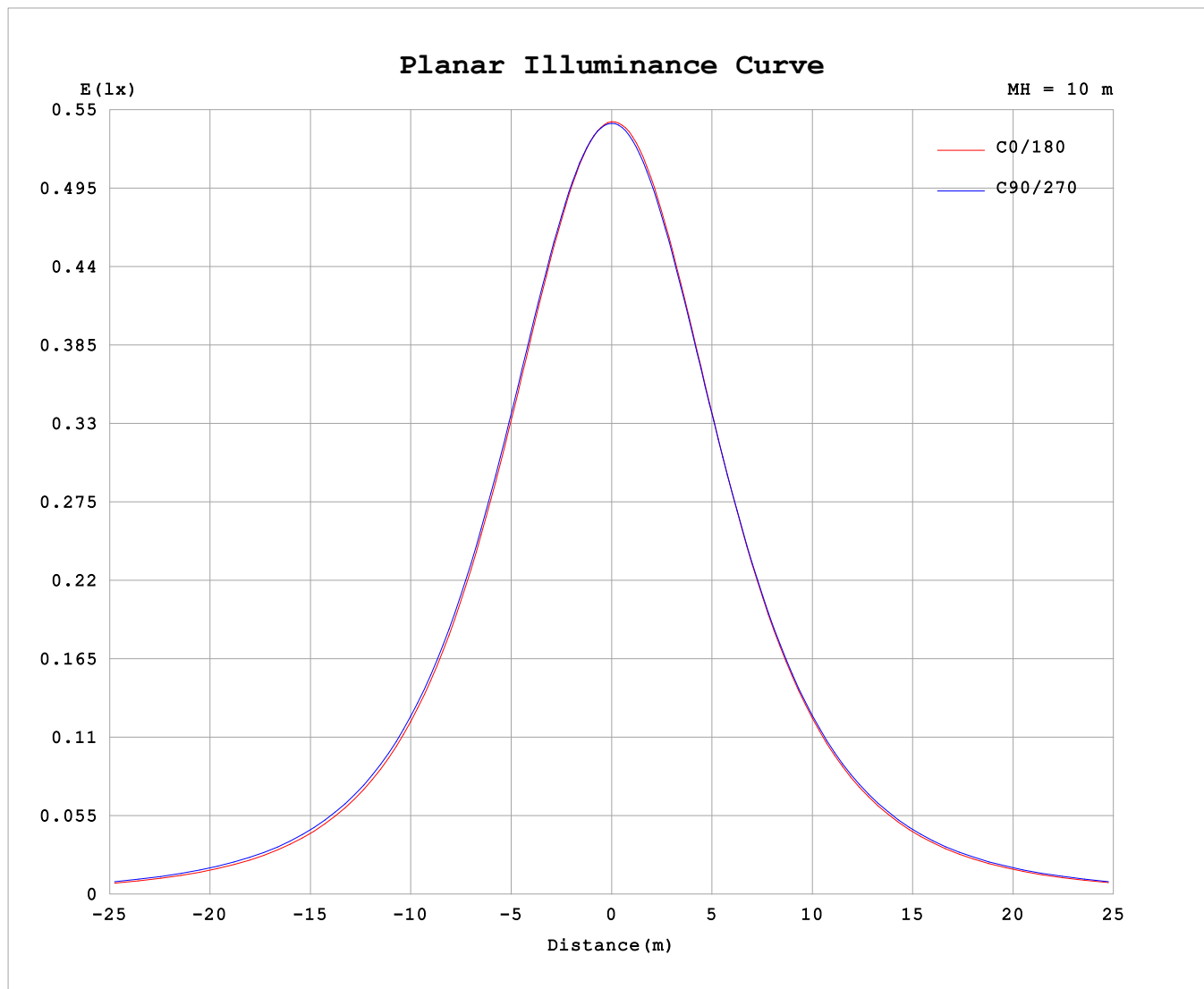
AvgL	cd/m2
L_0~180 (65) av	3686
L_0~180 (75) av	3182
L_0~180 (85) av	1930
L_90~270 (65) av	4026
L_90~270 (75) av	3863
L_90~270 (85) av	3855
L_45 (65) av	3860
L_45 (75) av	3491
L_45 (85) av	2610

Standard: GB/T 29293-2012

C Range: 0 - 360DEG  
C Interval: 30.0DEG  
Test Speed: HIGH  
Temperature:25.3℃  
Operators:  
Test Date:2025-03-05

γ Range: 0 - 180DEG  
γ Interval: 1.0DEG  
Test System:EVERFINE GO-2000B\_V1 SYSTEM V2.00.488  
Humidity:65.0%  
Test Distance:6.360m [K=1.0000]  
Remarks:

## Planar Illuminance Curve



C Range: 0 - 360DEG  
C Interval: 30.0DEG  
Test Speed: HIGH  
Temperature: 25.3 °C  
Operators:  
Test Date: 2025-03-05

$\gamma$  Range: 0 - 180DEG  
 $\gamma$  Interval: 1.0DEG  
Test System: EVERFINE GO-2000B\_V1 SYSTEM V2.00.488  
Humidity: 65.0%  
Test Distance: 6.360m [K=1.0000]  
Remarks:

## LUMINOUS DISTRIBUTION INTENSITY DATA

Test:U:24.00V I:0.1935A P:4.644W PF:1.000 Freq:0Hz Lamp Flux:158.452x1 lm		
NAME: SF15-24V-5050-70-DMX-4000K(1)	TYPE:	WEIGHT:
SPEC.:	DIM.: Length=1m	SERIAL No.:
MFR.: Olym pia lighting	SUR.:	Shielding Angle:

Table--1

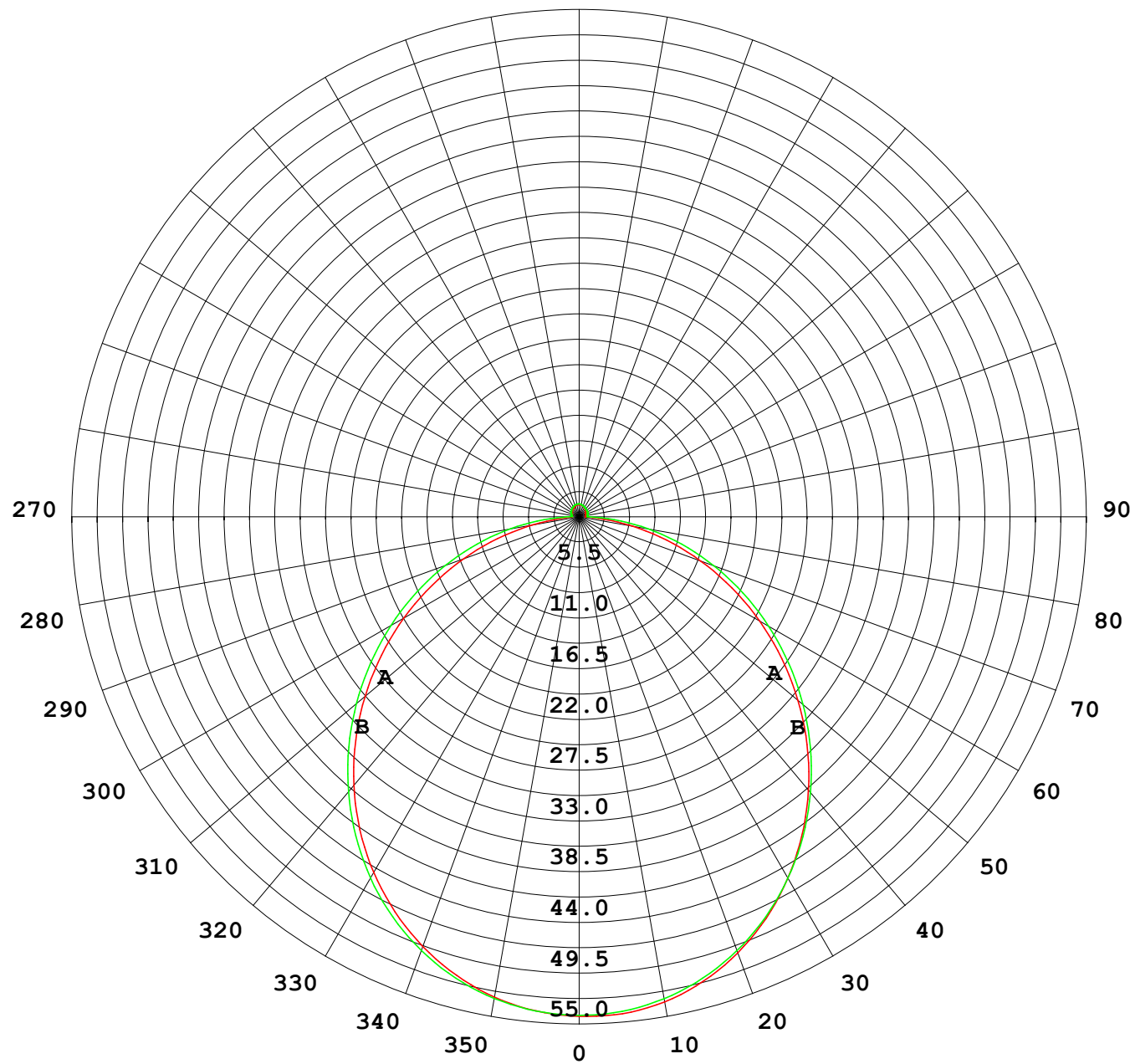
UNIT: cd

C (DEG) γ (DEG)	0	30	60	90	120	150	180	210	240	270	300	330							
0	54.1	54.1	54.1	54.1	54.1	54.1	54.1	54.1	54.1	54.1	54.1	54.1							
5	53.7	53.7	53.8	53.8	53.9	54.0	54.0	54.0	53.9	53.9	53.8	53.7							
10	52.8	52.9	52.9	53.1	53.2	53.3	53.3	53.3	53.3	53.1	53.0	52.9							
15	51.4	51.5	51.6	51.8	52.0	52.0	52.0	52.1	52.1	51.8	51.7	51.5							
20	49.5	49.7	49.8	50.1	50.3	50.3	50.2	50.3	50.4	50.1	49.9	49.7							
25	47.2	47.4	47.6	47.9	48.1	48.0	47.9	48.1	48.3	47.9	47.7	47.4							
30	44.5	44.7	45.0	45.3	45.5	45.3	45.2	45.4	45.6	45.3	45.0	44.7							
35	41.4	41.6	41.9	42.3	42.5	42.1	42.1	42.3	42.6	42.4	42.0	41.6							
40	37.9	38.2	38.6	38.9	39.1	38.7	38.6	38.9	39.3	39.0	38.7	38.2							
45	34.2	34.6	35.0	35.3	35.4	35.0	34.9	35.2	35.7	35.5	35.1	34.6							
50	30.3	30.7	31.2	31.5	31.5	31.0	30.9	31.2	31.8	31.7	31.3	30.7							
55	26.1	26.6	27.2	27.6	27.5	26.9	26.8	27.1	27.8	27.8	27.4	26.6							
60	21.9	22.5	23.2	23.6	23.3	22.7	22.6	22.8	23.6	23.7	23.3	22.4							
65	17.6	18.2	19.1	19.5	19.1	18.4	18.3	18.6	19.4	19.6	19.2	18.1							
70	13.3	13.9	15.0	15.4	14.9	14.1	14.0	14.3	15.2	15.6	15.0	13.9							
75	9.12	9.74	10.9	11.5	10.8	10.0	9.82	10.1	11.0	11.5	10.9	9.69							
80	5.10	5.70	6.87	7.61	6.84	6.01	5.81	6.11	7.05	7.62	6.88	5.66							
85	1.76	2.11	3.02	3.87	3.08	2.31	2.10	2.36	3.24	3.86	3.02	2.05							
90	0.84	0.91	0.94	1.34	0.85	0.79	0.70	0.83	0.95	0.91	0.95	0.85							
95	0.83	0.87	0.89	0.80	0.80	0.77	0.69	0.77	0.91	0.88	0.88	0.82							
100	0.83	0.87	0.88	0.85	0.81	0.79	0.69	0.78	0.91	0.90	0.89	0.81							
105	0.84	0.88	0.89	0.90	0.85	0.83	0.72	0.78	0.94	0.94	0.91	0.81							
110	0.89	0.89	0.91	0.95	0.90	0.88	0.77	0.82	0.97	0.97	0.94	0.83							
115	0.93	0.89	0.93	1.00	0.96	0.93	0.81	0.87	1.01	1.01	0.97	0.86							
120	0.97	0.91	0.96	1.05	1.02	0.98	0.85	0.90	1.04	1.04	0.98	0.89							
125	1.01	0.94	0.99	1.09	1.06	1.02	0.90	0.95	1.07	1.06	1.01	0.94							
130	1.05	0.98	1.03	1.13	1.11	1.07	0.94	0.98	1.10	1.09	1.05	0.97							
135	1.08	1.01	1.09	1.17	1.14	1.12	0.99	1.03	1.13	1.11	1.07	0.98							
140	1.12	1.06	1.15	1.21	1.18	1.17	1.04	1.07	1.16	1.14	1.10	1.00							
145	1.14	1.12	1.21	1.26	1.22	1.20	1.10	1.12	1.20	1.17	1.14	1.04							
150	1.15	1.19	1.25	1.31	1.26	1.24	1.15	1.17	1.23	1.21	1.17	1.09							
155	1.20	1.25	1.30	1.34	1.29	1.28	1.21	1.21	1.27	1.25	1.25	1.13							
160	1.27	1.29	1.33	1.37	1.32	1.32	1.26	1.26	1.31	1.29	1.29	1.18							
165	1.32	1.32	1.36	1.39	1.35	1.36	1.29	1.30	1.34	1.32	1.33	1.23							
170	1.32	1.37	1.37	1.40	1.38	1.39	1.30	1.34	1.38	1.35	1.36	1.33							
175	1.33	1.39	1.39	1.41	1.40	1.41	1.33	1.37	1.40	1.39	1.40	1.37							
180	1.33	1.39	1.40	1.41	1.40	1.41	1.33	1.39	1.40	1.41	1.41	1.39							

C Range: 0 - 360DEG  
C Interval: 30.0DEG  
Test Speed: HIGH  
Temperature:25.3℃  
Operators:  
Test Date:2025-03-05

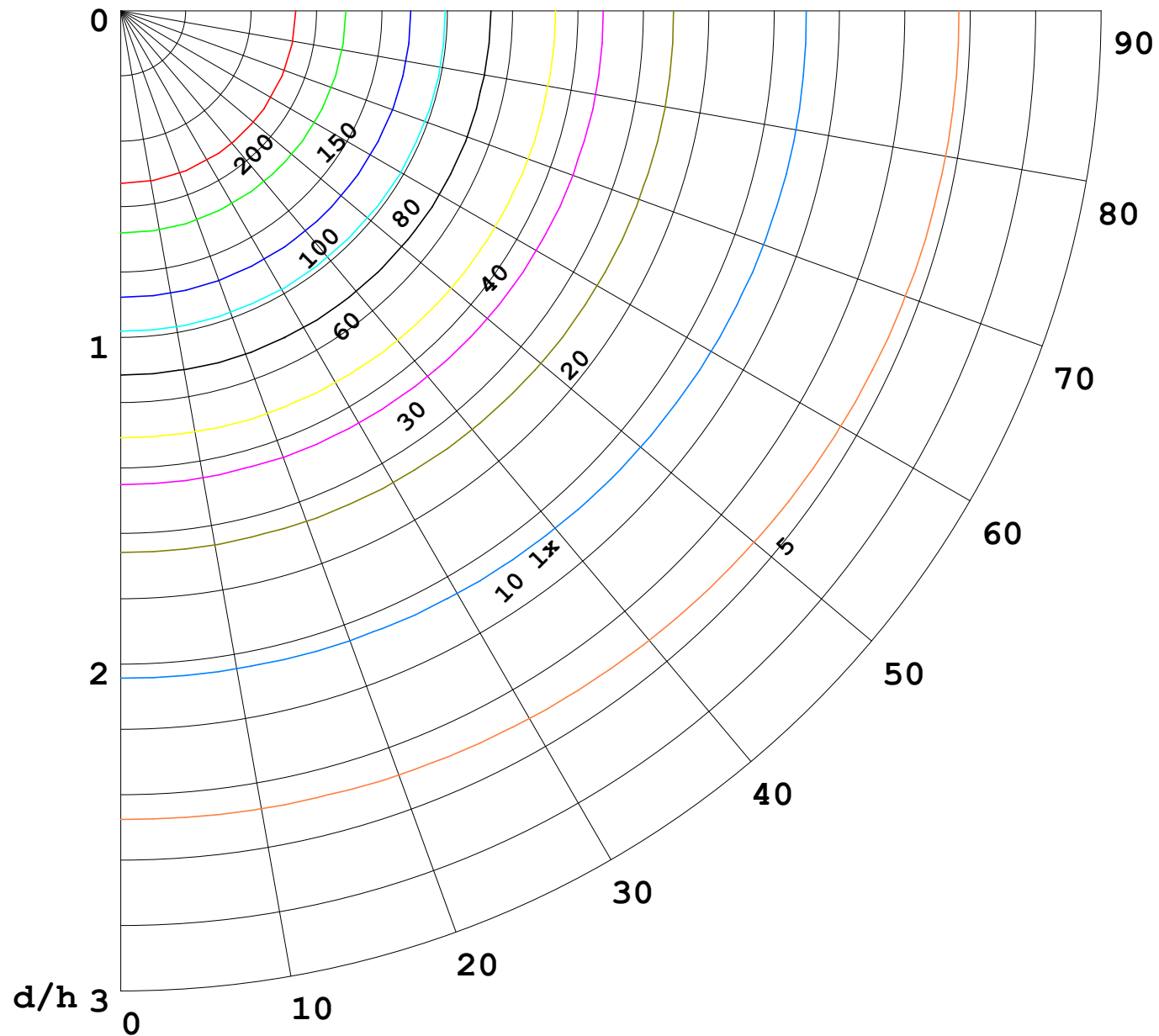
γ Range: 0 - 180DEG  
γ Interval: 1.0DEG  
Test System:EVERFINE GO-2000B\_V1 SYSTEM V2.00.488  
Humidity:65.0%  
Test Distance:6.360m [K=1.0000]  
Remarks:

I (cd)



1000 lm

$\kappa = 1$



F = 1000 lm  
 K = 0.7  
 Hcc = 0.8 m  
 Hfc = 0.0 m  
 Eave = 100 lx

	Pcc	Pw	Pfc
—————	70	50	30
—————	50	30	20

