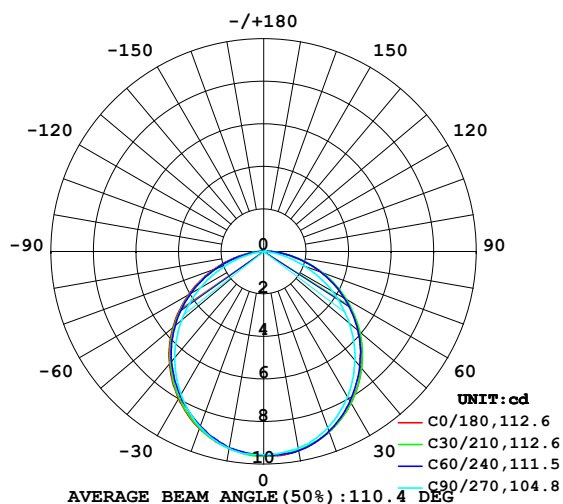


LUMINAIRE PHOTOMETRIC TEST REPORT

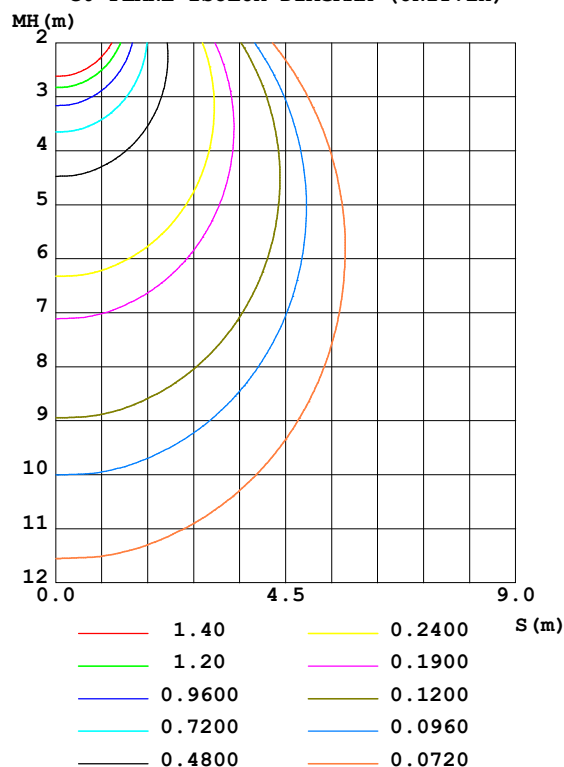
Test:U:24.00V I:0.2119A P:5.086W PF:1.000 Freq:50.00Hz Lamp Flux:27.2496x1 lm		
NAME: SF15-24V-5050-56-DMX3-RGB-R	TYPE: 硅胶	WEIGHT:
SPEC.:	DIM.: 21mm*11.5mm	SERIAL No.:2021123011
MFR.: OLYMPIA	SUR.:1*0.0115	Shielding Angle:

DATA OF LAMP		PHOTOMETRIC DATA				Eff: 5.36 lm/W
MODEL	5050	I _{max} (cd)	9.624	S/MH (C0/180)	1.24	
NOMINAL POWER (W)	4	LOR (%)	100.0	S/MH (C90/270)	1.22	
RATED VOLTAGE (V)	24	TOTAL FLUX (lm)	27.250	η UP, DN (C0-180)	0.5, 49.7	
NOMINAL FLUX (lm)	27.2496	CIE CLASS	DIRECT	η UP, DN (C180-360)	0.3, 49.4	
LAMPS INSIDE	1	η up (%)	0.9	CIBSE SHR NOM	1.25	
TEST VOLTAGE (V)	24	η down (%)	99.1	CIBSE SHR MAX	1.35	

LUMINOUS INTENSITY DISTRIBUTION DIAGRAM



C0 PLANE ISOLUX DIAGRAM (UNIT:lx)



C Range: 0 - 360DEG
 C Interval: 30.0DEG
 Test Speed: HIGH
 Temperature: 25.3DEG
 Operators: LPC
 Test Date: 2021-12-30

γ Range: 0 - 120DEG
 γ Interval: 1.0DEG
 Test System: EVERFINE GO-2000B_V1 SYSTEM V2.0.362
 Humidity: 65.0%
 Test Distance: 9.200m [K=1.0000]
 Remarks:

ZONAL FLUX DIAGRAM

ZONAL FLUX DIAGRAM:

γ	C0	C45	C90	C135	C180	C225	C270	C315	γ	Φ zone	Φ total	%lum, lamp
10	9.509	9.489	9.398	9.323	9.393	9.390	9.399	9.473	0- 10	0.9069	0.9069	3.33,3.33
20	9.017	9.006	8.829	8.730	8.865	8.780	8.771	8.966	10- 20	2.592	3.499	12.8,12.8
30	8.218	8.175	7.885	7.835	8.000	7.903	7.776	8.149	20- 30	3.902	7.402	27.2,27.2
40	7.143	7.094	6.678	6.699	6.889	6.785	6.520	7.116	30- 40	4.671	12.07	44.3,44.3
50	5.867	5.847	5.255	5.360	5.577	5.468	5.037	5.918	40- 50	4.825	16.90	62,62
60	4.429	4.425	3.713	3.870	4.089	3.985	3.459	4.518	50- 60	4.340	21.24	77.9,77.9
70	2.896	2.912	2.079	2.292	2.521	2.410	1.846	3.023	60- 70	3.300	24.54	90.1,90.1
80	1.388	1.400	0.5868	0.8545	1.049	0.9321	0.4233	1.498	70- 80	1.887	26.43	97,97
90	0.3424	0.2689	0.0553	0.1357	0.1505	0.1082	0	0.2916	80- 90	0.5845	27.01	99.1,99.1
100	0.0654	0.0858	0.0654	0.1014	0.0603	0.0653	0	0.0428	90-100	0.1045	27.12	99.5,99.5
110	0.0603	0.0779	0.0754	0.0955	0.0603	0.0603	0	0.0503	100-110	0.0673	27.18	99.8,99.8
120	0.0603	0.0754	0.0804	0.0955	0.0603	0.0578	0.0101	0.0578	110-120	0.0639	27.25	100,100
130	0	0	0	0	0	0	0	0	120-130	0.0031	27.25	100,100
140	0	0	0	0	0	0	0	0	130-140	0	27.25	100,100
150	0	0	0	0	0	0	0	0	140-150	0	27.25	100,100
160	0	0	0	0	0	0	0	0	150-160	0	27.25	100,100
170	0	0	0	0	0	0	0	0	160-170	0	27.25	100,100
180	0	0	0	0	0	0	0	0	170-180	0	27.25	100,100
DEG	LUMINOUS INTENSITY:cd									UNIT:lm		

Conical surface Flux(90deg): 14.507 lm

%lum = 53.2%

%lamp = 53.2%

Conical surface Flux(120deg): 21.239 lm

%lum = 77.9%

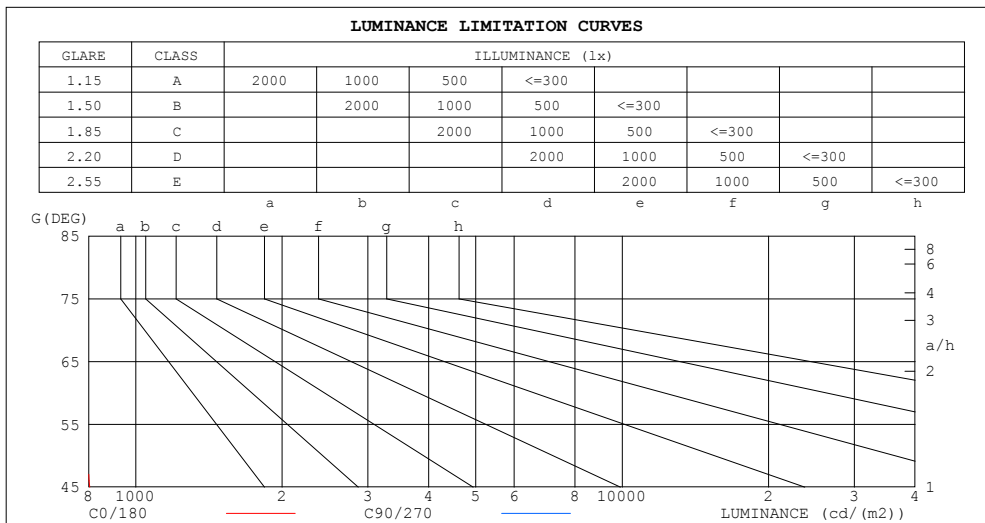
%lamp = 77.9%

C Range: 0 - 360DEG
 C Interval: 30.0DEG
 Test Speed: HIGH
 Temperature:25.3DEG
 Operators:LPC
 Test Date:2021-12-30

γ Range: 0 - 120DEG
 γ Interval: 1.0DEG
 Test System:EVERFINE GO-2000B_V1 SYSTEM V2.0.362
 Humidity:65.0%
 Test Distance:9.200m [K=1.0000]
 Remarks:

LUMINANCE LIMITATION CURVES

Test:U:24.00V I:0.2119A P:5.086W PF:1.000 Freq:50.00Hz Lamp Flux:27.2496x1 lm		
NAME: SF15-24V-5050-56-DMX3-RGB-R	TYPE: 硅胶	WEIGHT:
SPEC.:	DIM.: 21mm*11.5mm	SERIAL No.:2021123011
MFR.: OLYMPIA	SUR.:1*0.0115	Shielding Angle:



LUMINANCE cd/(m2)		
G (DEG)	C0/180	C90/270
85	743	65
80	695	294
75	713	440
70	736	529
65	756	595
60	770	646
55	783	680
50	794	711
45	804	737

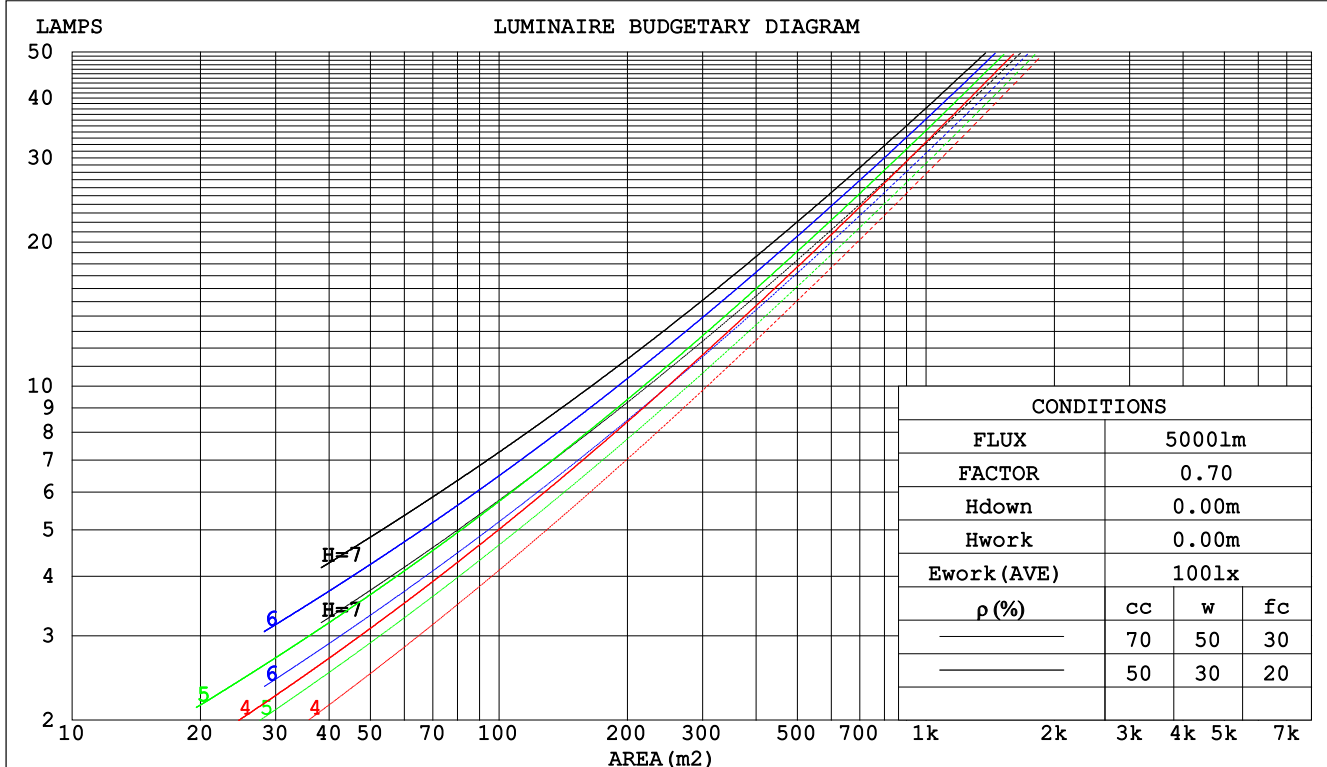
C Range: 0 - 360DEG
C Interval: 30.0DEG
Test Speed: HIGH
Temperature:25.3DEG
Operators:LPC
Test Date:2021-12-30

γ Range: 0 - 120DEG
 γ Interval: 1.0DEG
Test System:EVERFINE GO-2000B_V1 SYSTEM V2.0.362
Humidity:65.0%
Test Distance:9.200m [K=1.0000]
Remarks:

CU AND LUMINAIRE BUDGETARY ESTIMATE DIAGRAM

Test:U:24.00V I:0.2119A P:5.086W PF:1.000 Freq:50.00Hz Lamp Flux:27.2496x1 lm		
NAME: SF15-24V-5050-56-DMX3-RGB-R	TYPE: 硅胶	WEIGHT:
SPEC.:	DIM.: 21mm*11.5mm	SERIAL No.:2021123011
MFR.: OLYMPIA	SUR.:1*0.0115	Shielding Angle:

pcc	80%			70%			50%			30%			10%			0
pw	50%	30%	10%	50%	30%	10%	50%	30%	10%	50%	30%	10%	50%	30%	10%	0
pfc	20%			20%			20%			20%			20%			0
RCR	RCR:Room Cavity Ratio						Coefficients of Utilization(CU)									
0.0	1.19	1.19	1.19	1.16	1.16	1.16	1.11	1.11	1.11	1.06	1.06	1.06	1.01	1.01	1.01	.99
1.0	1.04	.99	.95	1.01	.97	.94	.97	.94	.91	.93	.90	.88	.89	.87	.85	.83
2.0	.90	.83	.78	.88	.82	.77	.85	.79	.75	.81	.77	.73	.78	.74	.71	.69
3.0	.79	.71	.64	.78	.70	.64	.74	.68	.62	.72	.66	.61	.69	.64	.60	.58
4.0	.70	.61	.55	.69	.60	.54	.66	.59	.53	.64	.57	.52	.61	.56	.52	.49
5.0	.63	.54	.47	.61	.53	.47	.59	.52	.46	.57	.51	.45	.55	.49	.45	.43
6.0	.56	.47	.41	.55	.47	.41	.53	.46	.40	.52	.45	.40	.50	.44	.39	.37
7.0	.51	.42	.36	.50	.42	.36	.49	.41	.36	.47	.40	.35	.46	.40	.35	.33
8.0	.47	.38	.32	.46	.38	.32	.44	.37	.32	.43	.36	.32	.42	.36	.31	.29
9.0	.43	.35	.29	.42	.34	.29	.41	.34	.29	.40	.33	.28	.39	.33	.28	.26
10.0	.39	.32	.26	.39	.31	.26	.38	.31	.26	.37	.30	.26	.36	.30	.26	.24



C Range: 0 - 360DEG
 C Interval: 30.0DEG
 Test Speed: HIGH
 Temperature:25.3DEG
 Operators:LPC
 Test Date:2021-12-30

γ Range: 0 - 120DEG
 γ Interval: 1.0DEG
 Test System:EVERFINE GO-2000B_V1 SYSTEM V2.0.362
 Humidity:65.0%
 Test Distance:9.200m [K=1.0000]
 Remarks:

WEC AND CCEC

Test:U:24.00V I:0.2119A P:5.086W PF:1.000 Freq:50.00Hz Lamp Flux:27.2496x1 lm		
NAME: SF15-24V-5050-56-DMX3-RGB-R	TYPE: 硅胶	WEIGHT:
SPEC.:	DIM.: 21mm*11.5mm	SERIAL No.:2021123011
MFR.: OLYMPIA	SUR.:1*0.0115	Shielding Angle:

pcc	80%			70%			50%			30%			10%			0	
pw	50%	30%	10%	50%	30%	10%	50%	30%	10%	50%	30%	10%	50%	30%	10%	0	
pfc	20%			20%			20%			20%			20%			0	
RCR	RCR:Room Cavity Ratio						Wall Exitance Coefficients(WEC)										
0.0																	
1.0	.312	.177	.056	.304	.174	.055	.290	.167	.053	.278	.160	.051	.266	.154	.050		
2.0	.292	.160	.049	.286	.157	.048	.273	.152	.047	.262	.147	.046	.252	.142	.045		
3.0	.270	.144	.043	.264	.141	.043	.253	.137	.042	.243	.133	.041	.234	.130	.040		
4.0	.249	.129	.038	.244	.128	.038	.234	.124	.037	.225	.121	.037	.217	.118	.036		
5.0	.230	.117	.034	.226	.116	.034	.217	.113	.033	.209	.110	.033	.202	.108	.032		
6.0	.213	.107	.031	.209	.106	.030	.202	.103	.030	.195	.101	.030	.188	.099	.029		
7.0	.198	.098	.028	.195	.097	.028	.188	.095	.027	.182	.093	.027	.176	.091	.027		
8.0	.185	.091	.025	.182	.090	.025	.176	.088	.025	.170	.086	.025	.165	.085	.025		
9.0	.174	.084	.023	.171	.083	.023	.165	.082	.023	.160	.080	.023	.155	.079	.023		
10.0	.163	.078	.022	.161	.078	.022	.156	.076	.021	.151	.075	.021	.147	.074	.021		

pcc	80%			70%			50%			30%			10%			0
pw	50%	30%	10%	50%	30%	10%	50%	30%	10%	50%	30%	10%	50%	30%	10%	0
pfc	20%			20%			20%			20%			20%			0
RCR	RCR:Room Cavity Ratio						Ceiling Cavity Exitance Coefficients(CCEC)									
0.0	.197	.197	.197	.168	.168	.168	.115	.115	.115	.066	.066	.066	.021	.021	.021	
1.0	.187	.163	.141	.160	.140	.121	.110	.096	.084	.063	.056	.049	.020	.018	.016	
2.0	.179	.139	.105	.153	.119	.091	.105	.083	.063	.061	.048	.037	.019	.016	.012	
3.0	.171	.121	.081	.147	.104	.070	.101	.073	.049	.058	.042	.029	.019	.014	.010	
4.0	.164	.108	.065	.140	.093	.057	.097	.065	.040	.056	.038	.024	.018	.012	.008	
5.0	.156	.097	.054	.134	.084	.047	.092	.059	.033	.054	.035	.020	.017	.011	.006	
6.0	.149	.089	.046	.128	.077	.040	.088	.054	.028	.051	.032	.017	.017	.010	.006	
7.0	.142	.082	.040	.122	.071	.035	.085	.050	.025	.049	.029	.015	.016	.010	.005	
8.0	.136	.076	.036	.117	.066	.031	.081	.047	.022	.047	.027	.013	.015	.009	.004	
9.0	.130	.071	.032	.112	.062	.028	.077	.044	.020	.045	.026	.012	.015	.008	.004	
10.0	.124	.067	.029	.107	.058	.026	.074	.041	.018	.043	.024	.011	.014	.008	.004	

C Range: 0 - 360DEG
C Interval: 30.0DEG
Test Speed: HIGH
Temperature:25.3DEG
Operators:LPC
Test Date:2021-12-30

γ Range: 0 - 120DEG
γ Interval: 1.0DEG
Test System:EVERFINE GO-2000B_V1 SYSTEM V2.0.362
Humidity:65.0%
Test Distance:9.200m [K=1.0000]
Remarks:

UGR(Unified Glare Rating) Table

Test:U:24.00V I:0.2119A P:5.086W PF:1.000 Freq:50.00Hz Lamp Flux:27.2496x1 lm											
NAME: SF15-24V-5050-56-DMX3-RGB-R						TYPE:硅胶			WEIGHT:		
SPEC.:						DIM.: 21mm*11.5mm			SERIAL No.:2021123011		
MFR.: OLYMPIA						SUR.:1*0.0115			Shielding Angle:		
ceiling/cavity	0.7	0.7	0.5	0.5	0.3	0.7	0.7	0.5	0.5	0.3	
walls	0.5	0.3	0.5	0.3	0.3	0.5	0.3	0.5	0.3	0.3	
working plane	0.2	0.2	0.2	0.2	0.2	0.2	0.2	0.2	0.2	0.2	
Room dimensions		Viewed crosswise					Viewed endwise				
x = 2H y = 2H	24.7	26.2	25.0	26.5	26.7	24.2	25.8	24.5	26.0	26.2	
	3H	26.4	27.8	26.7	28.0	28.3	25.6	27.0	25.9	27.2	27.5
	4H	27.1	28.4	27.4	28.7	29.0	26.0	27.4	26.4	27.6	27.9
	6H	27.6	28.9	28.0	29.2	29.5	26.3	27.5	26.6	27.8	28.1
	8H	27.9	29.1	28.2	29.4	29.7	26.3	27.5	26.6	27.8	28.1
	12H	28.0	29.2	28.4	29.5	29.8	26.2	27.4	26.6	27.7	28.0
4H	2H	25.4	26.7	25.7	27.0	27.2	25.0	26.3	25.3	26.6	26.9
	3H	27.2	28.4	27.6	28.7	29.0	26.6	27.8	27.0	28.1	28.4
	4H	28.1	29.1	28.5	29.5	29.8	27.3	28.3	27.6	28.7	29.0
	6H	28.8	29.7	29.2	30.1	30.5	27.6	28.6	28.0	28.9	29.3
	8H	29.1	29.9	29.5	30.3	30.7	27.7	28.6	28.1	29.0	29.4
	12H	29.3	30.1	29.7	30.5	30.9	27.7	28.5	28.1	28.9	29.3
8H	4H	28.4	29.3	28.8	29.6	30.1	27.7	28.6	28.1	28.9	29.4
	6H	29.3	30.0	29.7	30.4	30.9	28.3	29.0	28.8	29.5	29.9
	8H	29.7	30.3	30.1	30.7	31.2	28.5	29.1	29.0	29.6	30.1
	12H	30.0	30.6	30.5	31.0	31.5	28.6	29.1	29.1	29.6	30.1
12H	4H	28.4	29.2	28.8	29.6	30.0	27.7	28.5	28.2	28.9	29.4
	6H	29.4	30.0	29.8	30.4	30.9	28.4	29.1	28.9	29.5	30.0
	8H	29.8	30.4	30.3	30.8	31.3	28.7	29.3	29.2	29.7	30.2
Variations with the observer position at spacings:											
S = 1.0H	+ 0.1 / - 0.2					+ 0.2 / - 0.2					
1.5H	+ 0.2 / - 0.3					+ 0.3 / - 0.4					
2.0H	+ 0.1 / - 0.3					+ 0.2 / - 0.5					

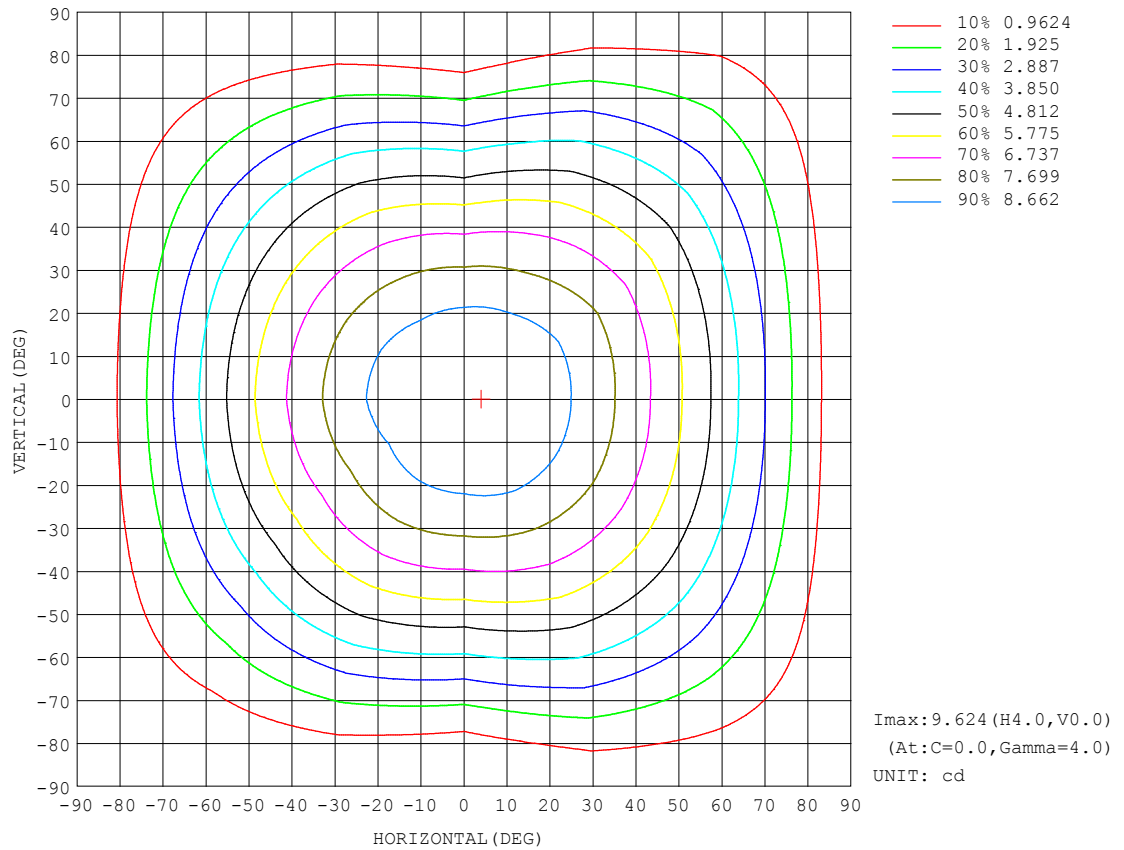
CIE Pub.117, 27.25 lm Total Lamp Luminous Flux Correct (8log(F/F0) = -12.5)

C Range: 0 - 360DEG
C Interval: 30.0DEG
Test Speed: HIGH
Temperature:25.3DEG
Operators:LPC
Test Date:2021-12-30

γ Range: 0 - 120DEG
γ Interval: 1.0DEG
Test System:EVERFINE GO-2000B_V1 SYSTEM V2.0.362
Humidity:65.0%
Test Distance:9.200m [K=1.0000]
Remarks:

ISOCANDELA DIAGRAM

Test:U:24.00V I:0.2119A P:5.086W PF:1.000 Freq:50.00Hz Lamp Flux:27.2496x1 lm		
NAME: SF15-24V-5050-56-DMX3-RGB-R	TYPE: 硅胶	WEIGHT:
SPEC.:	DIM.: 21mm*11.5mm	SERIAL No.:2021123011
MFR.: OLYMPIA	SUR.:1*0.0115	Shielding Angle:

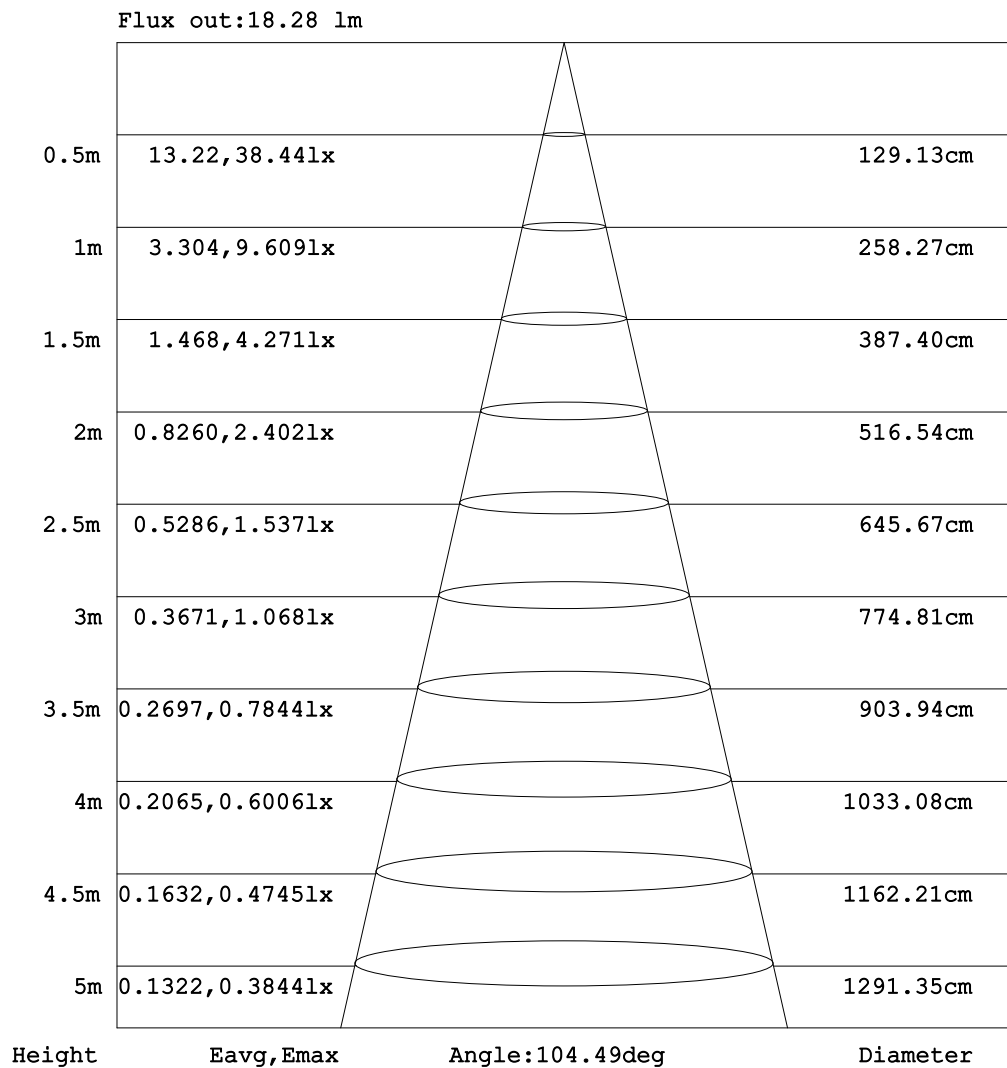


C Range: 0 - 360DEG
C Interval: 30.0DEG
Test Speed: HIGH
Temperature: 25.3DEG
Operators: LPC
Test Date: 2021-12-30

γ Range: 0 - 120DEG
γ Interval: 1.0DEG
Test System: EVERFINE GO-2000B_V1 SYSTEM V2.0.362
Humidity: 65.0%
Test Distance: 9.200m [K=1.0000]
Remarks:

AAI Figure

Test:U:24.00V I:0.2119A P:5.086W PF:1.000 Freq:50.00Hz Lamp Flux:27.2496x1 lm		
NAME: SF15-24V-5050-56-DMX3-RGB-R	TYPE: 硅胶	WEIGHT:
SPEC.:	DIM.: 21mm*11.5mm	SERIAL No.:2021123011
MFR.: OLYMPIA	SUR.:1*0.0115	Shielding Angle:



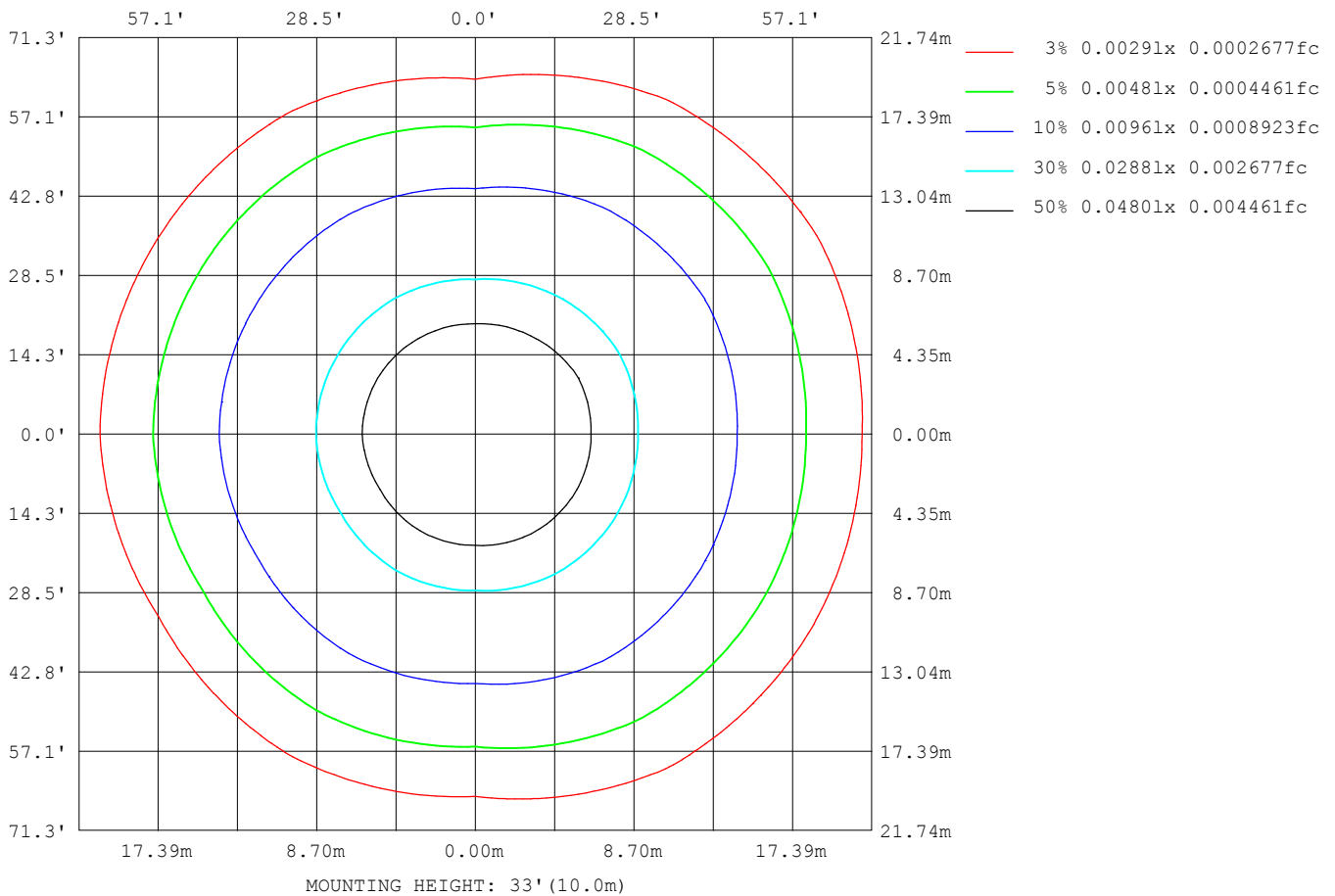
Note: The Curves indicate the illuminated area and the average illumination when the luminaire is at different distance.

C Range: 0 - 360DEG
 C Interval: 30.0DEG
 Test Speed: HIGH
 Temperature: 25.3DEG
 Operators: LPC
 Test Date: 2021-12-30

γ Range: 0 - 120DEG
 γ Interval: 1.0DEG
 Test System: EVERFINE GO-2000B_V1 SYSTEM V2.0.362
 Humidity: 65.0%
 Test Distance: 9.200m [K=1.0000]
 Remarks:

ISOLUX DIAGRAM

Test:U:24.00V I:0.2119A P:5.086W PF:1.000 Freq:50.00Hz Lamp Flux:27.2496x1 lm		
NAME: SF15-24V-5050-56-DMX3-RGB-R	TYPE: 硅胶	WEIGHT:
SPEC.:	DIM.: 21mm*11.5mm	SERIAL No.:2021123011
MFR.: OLYMPIA	SUR.:1*0.0115	Shielding Angle:



C Range: 0 - 360DEG
C Interval: 30.0DEG
Test Speed: HIGH
Temperature:25.3DEG
Operators:LPC
Test Date:2021-12-30

γ Range: 0 - 120DEG
 γ Interval: 1.0DEG
Test System:EVERFINE GO-2000B_V1 SYSTEM V2.0.362
Humidity:65.0%
Test Distance:9.200m [K=1.0000]
Remarks:

LED Avg.L Report

Test:U:24.00V I:0.2119A P:5.086W PF:1.000 Freq:50.00Hz Lamp Flux:27.2496x1 lm		
NAME: SF15-24V-5050-56-DMX3-RGB-R	TYPE:硅胶	WEIGHT:
SPEC.:	DIM.: 21mm*11.5mm	SERIAL No.:2021123011
MFR.: OLYMPIA	SUR.:1*0.0115	Shielding Angle:

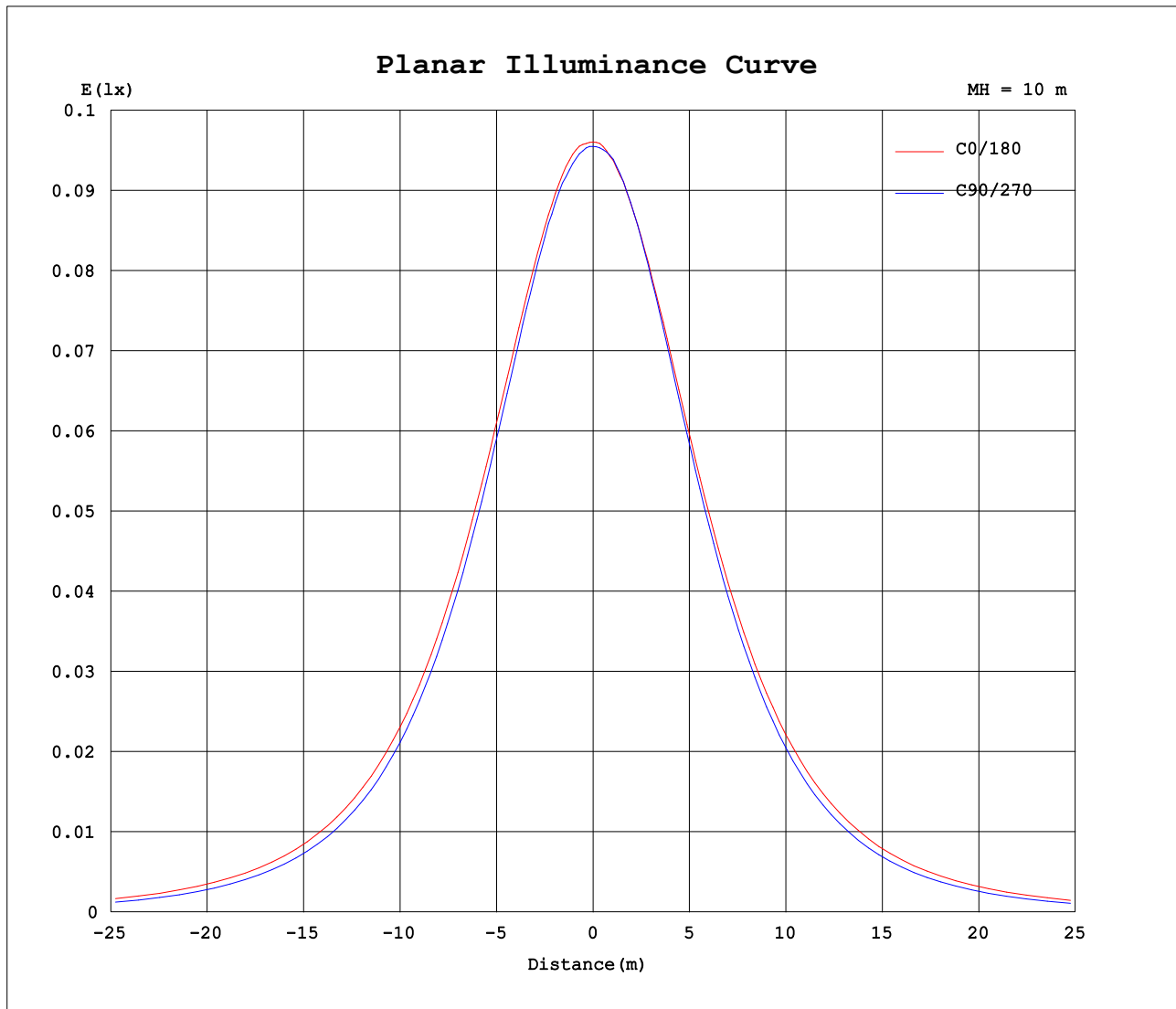
AvgL	cd/m2
L_0~180 (65) av	719
L_0~180 (75) av	648
L_0~180 (85) av	622
L_90~270 (65) av	569
L_90~270 (75) av	403
L_90~270 (85) av	43
L_45 (65) av	716
L_45 (75) av	648
L_45 (85) av	595

Standard: GB/T 29293-2012

C Range: 0 - 360DEG
C Interval: 30.0DEG
Test Speed: HIGH
Temperature:25.3DEG
Operators:LPC
Test Date:2021-12-30

γ Range: 0 - 120DEG
γ Interval: 1.0DEG
Test System:EVERFINE GO-2000B_V1 SYSTEM V2.0.362
Humidity:65.0%
Test Distance:9.200m [K=1.0000]
Remarks:

Planar Illuminance Curve



C Range: 0 - 360DEG
C Interval: 30.0DEG
Test Speed: HIGH
Temperature: 25.3DEG
Operators: LPC
Test Date: 2021-12-30

γ Range: 0 - 120DEG
 γ Interval: 1.0DEG
Test System: EVERFINE GO-2000B_V1 SYSTEM V2.0.362
Humidity: 65.0%
Test Distance: 9.200m [K=1.0000]
Remarks:

LUMINOUS DISTRIBUTION INTENSITY DATA

Test:U:24.00V I:0.2119A P:5.086W PF:1.000 Freq:50.00Hz Lamp Flux:27.2496x1 lm		
NAME: SF15-24V-5050-56-DMX3-RGB-R	TYPE: 硅胶	WEIGHT:
SPEC.:	DIM.: 21mm*11.5mm	SERIAL No.:2021123011
MFR.: OLYMPIA	SUR.:1*0.0115	Shielding Angle:

Table--1

UNIT: cd

C (DEG) γ (DEG)	0	30	60	90	120	150	180	210	240	270	300	330						
0	9.60	9.61	9.58	9.55	9.54	9.54	9.60	9.61	9.58	9.55	9.54	9.54						
5	9.62	9.57	9.58	9.51	9.53	9.44	9.54	9.57	9.50	9.55	9.53	9.54						
10	9.51	9.47	9.50	9.40	9.37	9.28	9.39	9.40	9.38	9.40	9.43	9.52						
15	9.31	9.28	9.31	9.16	9.12	9.02	9.17	9.17	9.08	9.14	9.20	9.34						
20	9.02	9.02	8.99	8.83	8.78	8.68	8.86	8.84	8.72	8.77	8.88	9.05						
25	8.66	8.65	8.59	8.40	8.37	8.28	8.47	8.42	8.32	8.31	8.46	8.71						
30	8.22	8.23	8.12	7.88	7.89	7.78	8.00	7.96	7.84	7.78	7.98	8.32						
35	7.71	7.73	7.60	7.31	7.35	7.24	7.48	7.42	7.32	7.17	7.45	7.84						
40	7.14	7.16	7.03	6.68	6.76	6.64	6.89	6.83	6.74	6.52	6.93	7.30						
45	6.54	6.56	6.43	5.99	6.13	5.98	6.26	6.20	6.12	5.80	6.38	6.73						
50	5.87	5.91	5.79	5.26	5.43	5.29	5.58	5.50	5.43	5.04	5.75	6.09						
55	5.17	5.21	5.09	4.49	4.71	4.54	4.84	4.77	4.71	4.25	5.08	5.40						
60	4.43	4.48	4.37	3.71	3.96	3.78	4.09	4.01	3.96	3.46	4.36	4.68						
65	3.68	3.73	3.64	2.89	3.17	3.00	3.31	3.23	3.18	2.64	3.63	3.95						
70	2.90	2.95	2.87	2.08	2.38	2.20	2.52	2.43	2.39	1.85	2.86	3.18						
75	2.12	2.17	2.11	1.31	1.61	1.46	1.74	1.65	1.61	1.09	2.10	2.40						
80	1.39	1.43	1.37	0.59	0.91	0.80	1.05	0.98	0.89	0.42	1.36	1.64						
85	0.75	0.75	0.68	0.07	0.37	0.36	0.50	0.45	0.31	0.02	0.66	0.94						
90	0.34	0.30	0.24	0.06	0.15	0.13	0.15	0.16	0.06	0.00	0.17	0.42						
95	0.14	0.10	0.11	0.06	0.12	0.10	0.06	0.08	0.06	0.00	0.04	0.15						
100	0.07	0.07	0.10	0.07	0.11	0.10	0.06	0.07	0.06	0.00	0.04	0.05						
105	0.07	0.07	0.09	0.08	0.10	0.10	0.06	0.07	0.05	0.00	0.04	0.05						
110	0.06	0.07	0.09	0.08	0.10	0.10	0.06	0.07	0.06	0.00	0.06	0.05						
115	0.06	0.07	0.09	0.08	0.10	0.10	0.06	0.07	0.06	0.00	0.06	0.06						
120	0.06	0.07	0.08	0.08	0.10	0.10	0.06	0.07	0.05	0.01	0.05	0.07						
125	0.00	0.00	0.00	0.00	0.00	0.00	0.00	0.00	0.00	0.00	0.00	0.00						
130	0.00	0.00	0.00	0.00	0.00	0.00	0.00	0.00	0.00	0.00	0.00	0.00						
135	0.00	0.00	0.00	0.00	0.00	0.00	0.00	0.00	0.00	0.00	0.00	0.00						
140	0.00	0.00	0.00	0.00	0.00	0.00	0.00	0.00	0.00	0.00	0.00	0.00						
145	0.00	0.00	0.00	0.00	0.00	0.00	0.00	0.00	0.00	0.00	0.00	0.00						
150	0.00	0.00	0.00	0.00	0.00	0.00	0.00	0.00	0.00	0.00	0.00	0.00						
155	0.00	0.00	0.00	0.00	0.00	0.00	0.00	0.00	0.00	0.00	0.00	0.00						
160	0.00	0.00	0.00	0.00	0.00	0.00	0.00	0.00	0.00	0.00	0.00	0.00						
165	0.00	0.00	0.00	0.00	0.00	0.00	0.00	0.00	0.00	0.00	0.00	0.00						
170	0.00	0.00	0.00	0.00	0.00	0.00	0.00	0.00	0.00	0.00	0.00	0.00						
175	0.00	0.00	0.00	0.00	0.00	0.00	0.00	0.00	0.00	0.00	0.00	0.00						
180	0.00	0.00	0.00	0.00	0.00	0.00	0.00	0.00	0.00	0.00	0.00	0.00						

C Range: 0 - 360DEG
C Interval: 30.0DEG
Test Speed: HIGH
Temperature:25.3DEG
Operators:LPC
Test Date:2021-12-30

γ Range: 0 - 120DEG
γ Interval: 1.0DEG
Test System:EVERFINE GO-2000B_V1 SYSTEM V2.0.362
Humidity:65.0%
Test Distance:9.200m [K=1.0000]
Remarks:

Photometric Data Table [cd]

G/C	0.0	30.0	60.0	90.0	120.0	150.0	180.0	210.0	240.0	270.0
0.0	9.604	9.609	9.579	9.549	9.544	9.539	9.604	9.609	9.579	9.549
3.0	9.614	9.604	9.589	9.534	9.544	9.488	9.589	9.609	9.544	9.549
6.0	9.609	9.559	9.571	9.488	9.499	9.428	9.528	9.544	9.473	9.544
9.0	9.544	9.498	9.539	9.438	9.409	9.307	9.453	9.449	9.383	9.449
12.0	9.429	9.403	9.444	9.302	9.288	9.192	9.307	9.318	9.247	9.308
15.0	9.308	9.277	9.308	9.161	9.122	9.016	9.166	9.167	9.076	9.142
18.0	9.147	9.141	9.127	8.965	8.926	8.819	8.985	8.982	8.870	8.936
21.0	8.956	8.960	8.921	8.734	8.705	8.603	8.789	8.761	8.649	8.690
24.0	8.735	8.734	8.680	8.488	8.449	8.362	8.548	8.509	8.402	8.409
27.0	8.489	8.493	8.414	8.206	8.183	8.080	8.286	8.253	8.136	8.113
30.0	8.218	8.226	8.123	7.885	7.886	7.784	8.000	7.962	7.844	7.776
33.0	7.922	7.930	7.811	7.558	7.575	7.457	7.688	7.645	7.538	7.424
36.0	7.600	7.613	7.484	7.191	7.238	7.115	7.362	7.308	7.206	7.042
39.0	7.264	7.281	7.148	6.799	6.882	6.753	7.019	6.952	6.859	6.655
42.0	6.902	6.924	6.786	6.422	6.520	6.387	6.653	6.590	6.497	6.233
45.0	6.540	6.562	6.434	5.994	6.128	5.984	6.261	6.198	6.125	5.801
48.0	6.143	6.175	6.052	5.552	5.716	5.572	5.854	5.786	5.708	5.344
51.0	5.736	5.773	5.650	5.110	5.294	5.140	5.431	5.359	5.296	4.877
54.0	5.314	5.351	5.238	4.642	4.856	4.693	5.014	4.922	4.854	4.419
57.0	4.871	4.929	4.811	4.200	4.409	4.245	4.542	4.469	4.416	3.947
60.0	4.429	4.476	4.374	3.713	3.957	3.783	4.089	4.007	3.964	3.459
63.0	3.982	4.034	3.937	3.225	3.485	3.320	3.637	3.545	3.496	2.977
66.0	3.520	3.577	3.484	2.728	3.017	2.838	3.155	3.072	3.029	2.474
69.0	3.052	3.104	3.022	2.235	2.540	2.361	2.677	2.590	2.546	1.992
72.0	2.590	2.637	2.565	1.757	2.072	1.893	2.200	2.122	2.074	1.549
75.0	2.123	2.175	2.107	1.310	1.610	1.456	1.738	1.655	1.607	1.087
78.0	1.660	1.712	1.645	0.8632	1.182	1.044	1.315	1.233	1.175	0.6647
81.0	1.248	1.275	1.223	0.4612	0.7852	0.6876	0.9235	0.8554	0.7575	0.3076
84.0	0.8558	0.8682	0.8157	0.1449	0.4534	0.4265	0.5970	0.5388	0.4110	0.0410
87.0	0.5588	0.5321	0.4635	0.0553	0.2419	0.2208	0.3511	0.3022	0.1604	0.0000
90.0	0.3424	0.2960	0.2418	0.0553	0.1460	0.1255	0.1505	0.1562	0.0603	0
93.0	0.1914	0.1504	0.1359	0.0553	0.1278	0.0955	0.0653	0.0856	0.0603	0
96.0	0.1158	0.0704	0.1087	0.0553	0.1190	0.0955	0.0603	0.0704	0.0603	0
99.0	0.0705	0.0704	0.1031	0.0604	0.1103	0.0955	0.0603	0.0704	0.0603	0
102.0	0.0653	0.0704	0.0974	0.0754	0.1015	0.0955	0.0603	0.0704	0.0452	0
105.0	0.0653	0.0704	0.0855	0.0754	0.0955	0.0955	0.0603	0.0654	0.0503	0
108.0	0.0603	0.0704	0.0854	0.0754	0.0955	0.0955	0.0603	0.0653	0.0553	0
111.0	0.0603	0.0704	0.0854	0.0754	0.0955	0.0955	0.0553	0.0653	0.0553	0
114.0	0.0603	0.0704	0.0854	0.0754	0.0955	0.0955	0.0553	0.0653	0.0553	0
117.0	0.0603	0.0704	0.0854	0.0754	0.0955	0.0955	0.0603	0.0653	0.0553	0
120.0	0.0603	0.0704	0.0804	0.0804	0.0955	0.0955	0.0603	0.0653	0.0503	0.0101
G/C	300.0	330.0								
0.0	9.544	9.539								
3.0	9.549	9.549								
6.0	9.529	9.536								
9.0	9.453	9.523								
12.0	9.362	9.459								
15.0	9.201	9.338								
18.0	9.005	9.183								
21.0	8.799	8.982								
24.0	8.548	8.786								
27.0	8.271	8.555								
30.0	7.980	8.318								
33.0	7.668	8.037								
36.0	7.347	7.741								
39.0	7.035	7.414								
42.0	6.709	7.072								
45.0	6.382	6.725								
48.0	6.009	6.349								
51.0	5.617	5.952								
54.0	5.215	5.545								
57.0	4.793	5.117								
60.0	4.361	4.675								
63.0	3.923	4.238								
66.0	3.481	3.791								
69.0	3.019	3.328								
72.0	2.556	2.871								
75.0	2.099	2.404								
78.0	1.637	1.941								
81.0	1.210	1.504								
84.0	0.7876	1.072								
87.0	0.4263	0.6947								
90.0	0.1653	0.4179								

C Range: 0 - 360DEG
 C Interval: 30.0DEG
 Test Speed: HIGH
 Temperature: 25.3DEG
 Operators: LPC
 Test Date: 2021-12-30

γ Range: 0 - 120DEG
 γ Interval: 1.0DEG
 Test System: EVERFINE GO-2000B_V1 SYSTEM V2.0.362
 Humidity: 65.0%
 Test Distance: 9.200m [K=1.0000]
 Remarks:

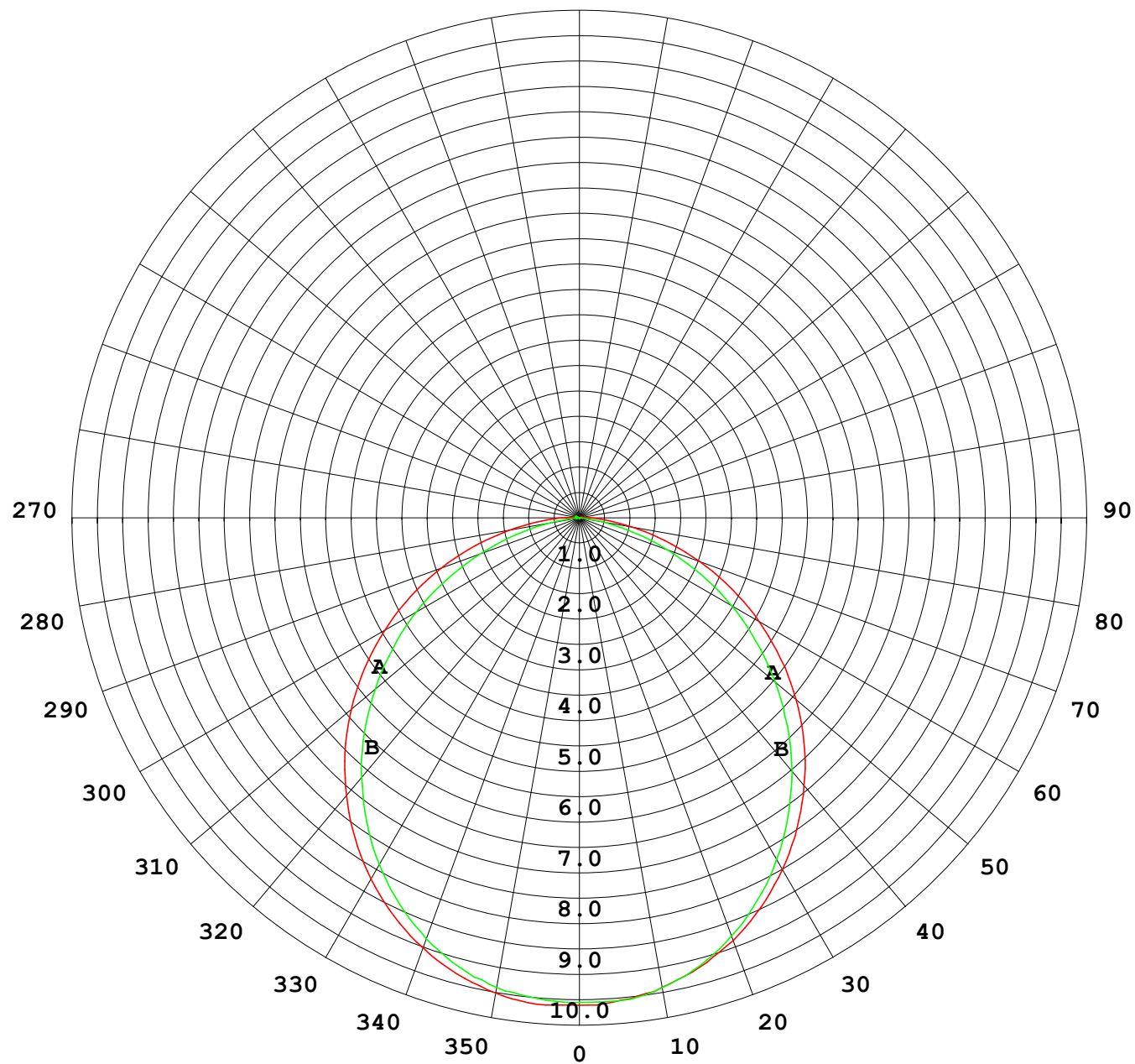
Photometric Data Table [cd]

93.0	0.0452	0.2366
96.0	0.0352	0.1259
99.0	0.0352	0.0605
102.0	0.0352	0.0503
105.0	0.0402	0.0503
108.0	0.0453	0.0453
111.0	0.0603	0.0452
114.0	0.0603	0.0553
117.0	0.0503	0.0603
120.0	0.0503	0.0653

C Range: 0 - 360DEG
C Interval: 30.0DEG
Test Speed: HIGH
Temperature: 25.3DEG
Operators: LPC
Test Date: 2021-12-30

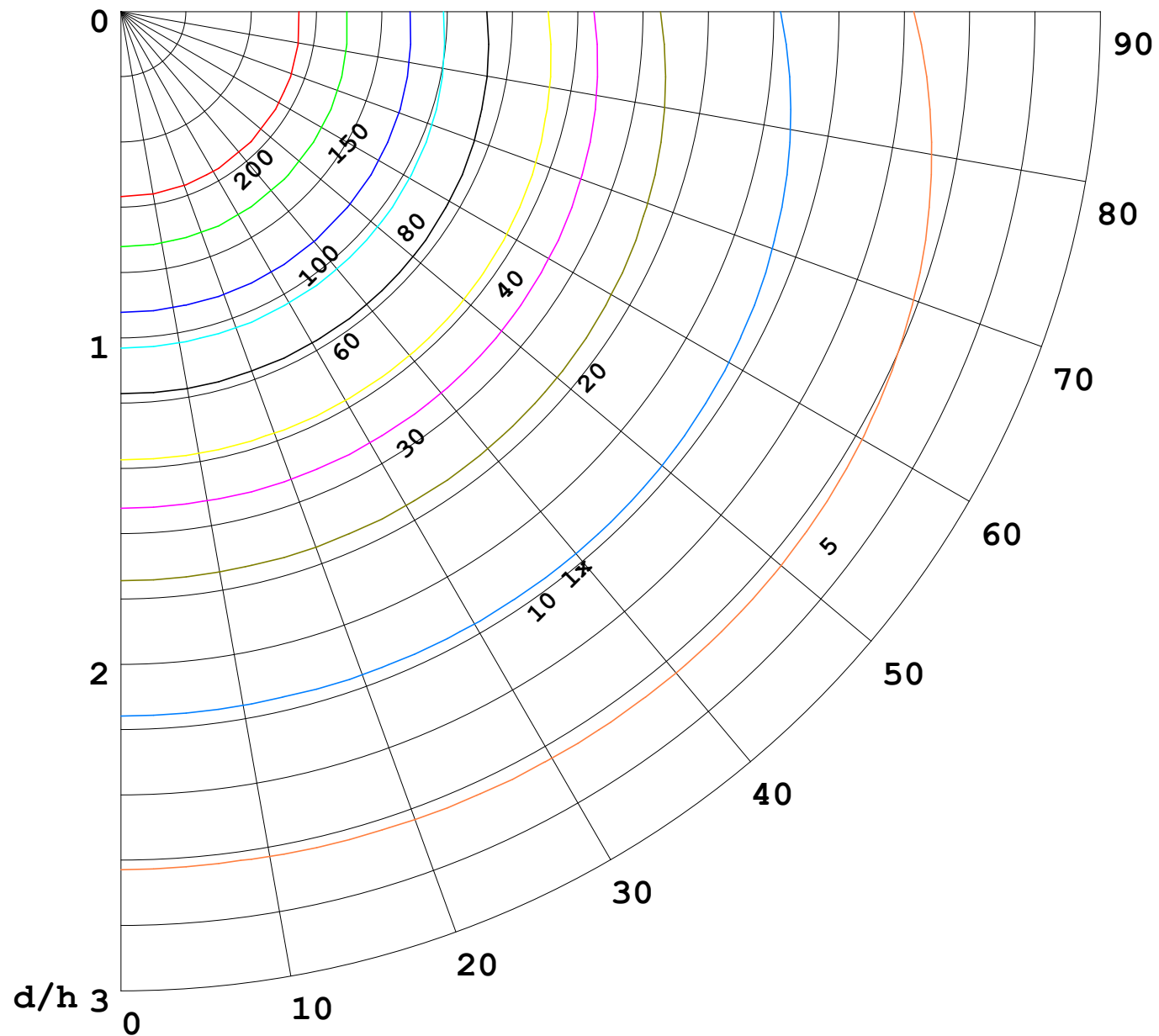
γ Range: 0 - 120DEG
γ Interval: 1.0DEG
Test System: EVERFINE GO-2000B_V1 SYSTEM V2.0.362
Humidity: 65.0%
Test Distance: 9.200m [K=1.0000]
Remarks:

I (cd)



1000 lm

$\kappa = 1$



F = 5000 lm
 K = 0.7
 Hcc = 0.0 m
 Hfc = 0.0 m
 Eave = 100 lx

	Pcc	Pw	Pfc
—	70	50	30
—	50	30	20

