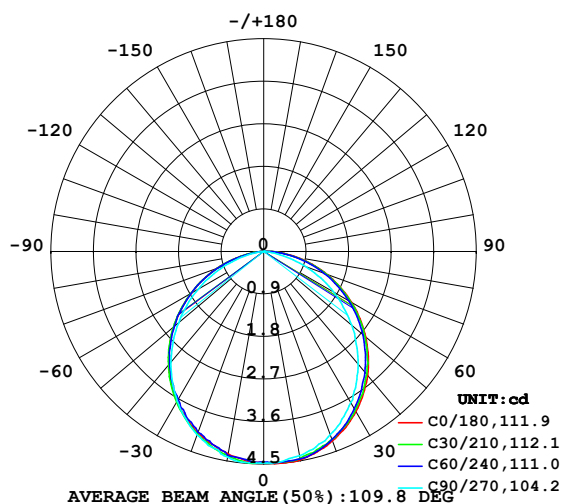


LUMINAIRE PHOTOMETRIC TEST REPORT

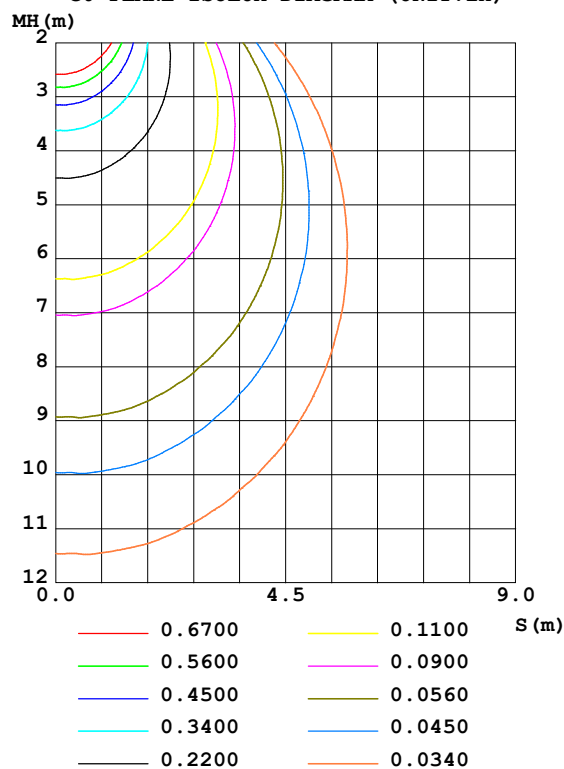
Test:U:24.00V I:0.2123A P:5.095W PF:1.000 Freq:50.00Hz Lamp Flux:12.5363x1 lm					
NAME: SF15-24V-5050-56-DMX3-RGB-G			TYPE: 硅胶		WEIGHT:
SPEC.:			DIM.: 21mm11.5mm		SERIAL No.:2021123012
MFR.: OLYMPIA			SUR.:1*0.0115		Shielding Angle:

DATA OF LAMP		PHOTOMETRIC DATA				Eff: 2.46 lm/W
MODEL	5050	I _{max} (cd)	4.498	S/MH (C0/180)	1.23	
NOMINAL POWER (W)	4	LOR (%)	100.0	S/MH (C90/270)	1.22	
RATED VOLTAGE (V)	24	TOTAL FLUX (lm)	12.536	η UP, DN (C0-180)	0.1, 50.6	
NOMINAL FLUX (lm)	12.5363	CIE CLASS	DIRECT	η UP, DN (C180-360)	0.0, 49.3	
LAMPS INSIDE	1	η up (%)	0.2	CIBSE SHR NOM	1.25	
TEST VOLTAGE (V)	24	η down (%)	99.8	CIBSE SHR MAX	1.35	

LUMINOUS INTENSITY DISTRIBUTION DIAGRAM



C0 PLANE ISOLUX DIAGRAM (UNIT:lx)



C Range: 0 - 360DEG
 C Interval: 30.0DEG
 Test Speed: HIGH
 Temperature: 25.3DEG
 Operators: LPC
 Test Date: 2021-12-30

γ Range: 0 - 120DEG
 γ Interval: 1.0DEG
 Test System: EVERFINE GO-2000B_V1 SYSTEM V2.0.362
 Humidity: 65.0%
 Test Distance: 9.200m [K=1.0000]
 Remarks:

ZONAL FLUX DIAGRAM

ZONAL FLUX DIAGRAM:

γ	C0	C45	C90	C135	C180	C225	C270	C315	γ	Φ zone	Φ total	%lum, lamp
10	4.478	4.449	4.387	4.357	4.347	4.385	4.418	4.427	0- 10	0.4239	0.4239	3.38,3.38
20	4.257	4.232	4.126	4.081	4.076	4.091	4.126	4.214	10- 20	1.212	1.636	13.1,13.1
30	3.910	3.860	3.689	3.654	3.658	3.654	3.659	3.845	20- 30	1.827	3.463	27.6,27.6
40	3.423	3.362	3.110	3.108	3.125	3.116	3.061	3.355	30- 40	2.185	5.648	45.1,45.1
50	2.825	2.767	2.432	2.463	2.482	2.483	2.348	2.787	40- 50	2.247	7.896	63,63
60	2.147	2.098	1.698	1.751	1.773	1.777	1.599	2.128	50- 60	2.010	9.905	79,79
70	1.433	1.392	0.9441	1.020	1.045	1.043	0.8500	1.422	60- 70	1.518	11.42	91.1,91.1
80	0.6993	0.6635	0.2307	0.3418	0.3613	0.3492	0.1664	0.6911	70- 80	0.8535	12.28	97.9,97.9
90	0.1662	0.1030	0	0.0177	0	0.0127	0	0.1106	80- 90	0.2372	12.51	99.8,99.8
100	0.0051	0.0075	0	0.0101	0	0	0	0	90-100	0.0190	12.53	100,100
110	0	0	0	0.0025	0	0	0	0	100-110	0.0017	12.53	100,100
120	0	0	0	0.0101	0	0	0	0	110-120	0.0013	12.54	100,100
130	0	0	0	0	0	0	0	0	120-130	0.0001	12.54	100,100
140	0	0	0	0	0	0	0	0	130-140	0	12.54	100,100
150	0	0	0	0	0	0	0	0	140-150	0	12.54	100,100
160	0	0	0	0	0	0	0	0	150-160	0	12.54	100,100
170	0	0	0	0	0	0	0	0	160-170	0	12.54	100,100
180	0	0	0	0	0	0	0	0	170-180	0	12.54	100,100
DEG	LUMINOUS INTENSITY:cd									UNIT:lm		

Conical surface Flux(90deg): 6.7833 lm

%lum = 54.1%

%lamp = 54.1%

Conical surface Flux(120deg): 9.9054 lm

%lum = 79.0%

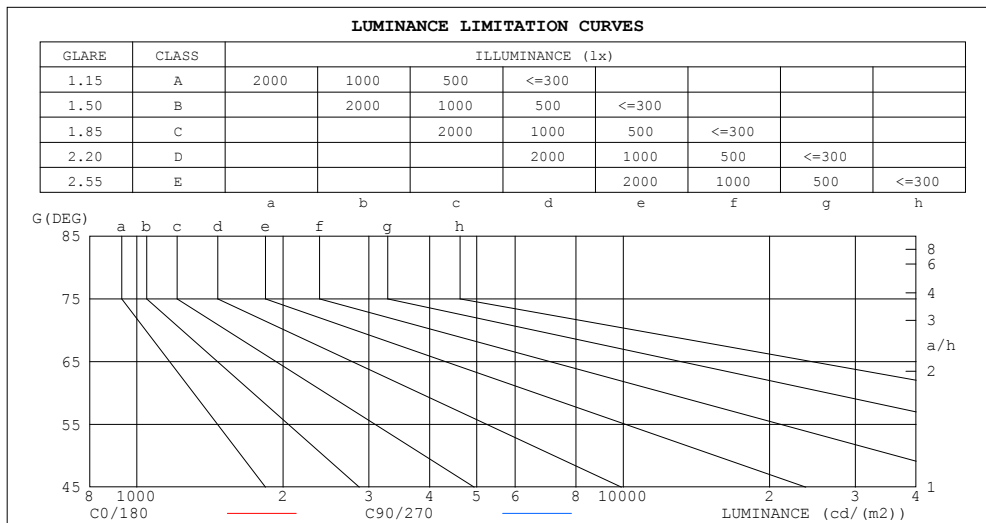
%lamp = 79.0%

C Range: 0 - 360DEG
 C Interval: 30.0DEG
 Test Speed: HIGH
 Temperature:25.3DEG
 Operators:LPC
 Test Date:2021-12-30

γ Range: 0 - 120DEG
 γ Interval: 1.0DEG
 Test System:EVERFINE GO-2000B_V1 SYSTEM V2.0.362
 Humidity:65.0%
 Test Distance:9.200m [K=1.0000]
 Remarks:

LUMINANCE LIMITATION CURVES

Test:U:24.00V I:0.2123A P:5.095W PF:1.000 Freq:50.00Hz Lamp Flux:12.5363x1 lm		
NAME: SF15-24V-5050-56-DMX3-RGB-G	TYPE: 硅胶	WEIGHT:
SPEC.:	DIM.: 21mm11.5mm	SERIAL No.:2021123012
MFR.: OLYMPIA	SUR.:1*0.0115	Shielding Angle:



LUMINANCE cd/(m2)		
G (DEG)	C0/180	C90/270
85	382	0
80	350	116
75	358	197
70	364	240
65	368	276
60	373	295
55	377	313
50	382	329
45	385	341

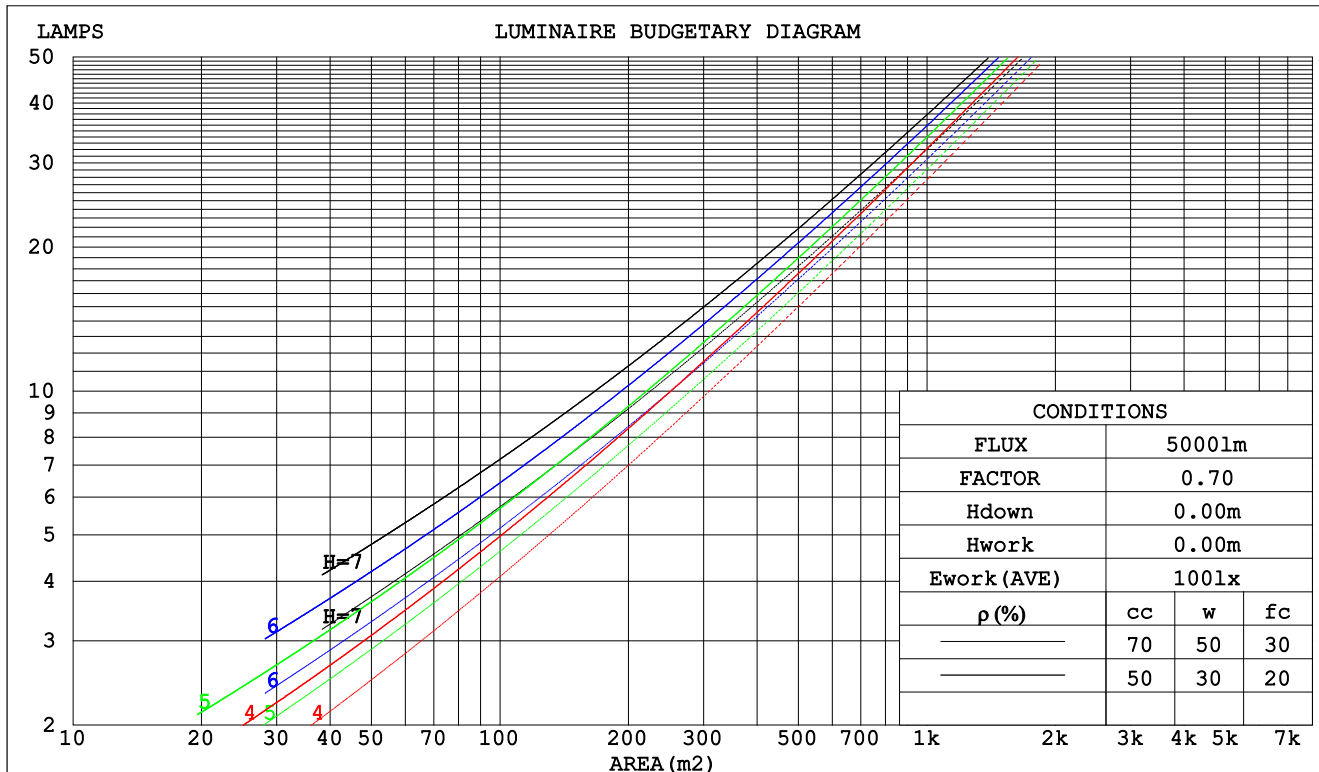
C Range: 0 - 360DEG
C Interval: 30.0DEG
Test Speed: HIGH
Temperature:25.3DEG
Operators:LPC
Test Date:2021-12-30

γ Range: 0 - 120DEG
 γ Interval: 1.0DEG
Test System:EVERFINE GO-2000B_V1 SYSTEM V2.0.362
Humidity:65.0%
Test Distance:9.200m [K=1.0000]
Remarks:

CU AND LUMINAIRE BUDGETARY ESTIMATE DIAGRAM

Test:U:24.00V I:0.2123A P:5.095W PF:1.000 Freq:50.00Hz Lamp Flux:12.5363x1 lm		
NAME: SF15-24V-5050-56-DMX3-RGB-G	TYPE: 硅胶	WEIGHT:
SPEC.:	DIM.: 21mm11.5mm	SERIAL No.:2021123012
MFR.: OLYMPIA	SUR.:1*0.0115	Shielding Angle:

pcc	80%			70%			50%			30%			10%			0
pw	50%	30%	10%	50%	30%	10%	50%	30%	10%	50%	30%	10%	50%	30%	10%	0
pfc	20%			20%			20%			20%			20%			0
RCR	RCR:Room Cavity Ratio						Coefficients of Utilization(CU)									
0.0	1.19	1.19	1.19	1.16	1.16	1.16	1.11	1.11	1.11	1.06	1.06	1.06	1.02	1.02	1.02	.00
1.0	1.04	.00	.96	1.02	.98	.94	.97	.94	.91	.93	.91	.88	.90	.88	.86	.84
2.0	.91	.84	.78	.89	.82	.77	.85	.80	.75	.82	.77	.73	.79	.75	.72	.70
3.0	.80	.71	.65	.78	.70	.64	.75	.68	.63	.72	.67	.62	.70	.65	.61	.59
4.0	.70	.62	.55	.69	.61	.55	.67	.59	.54	.64	.58	.53	.62	.57	.52	.50
5.0	.63	.54	.47	.62	.53	.47	.60	.52	.46	.58	.51	.46	.56	.50	.45	.43
6.0	.57	.48	.41	.56	.47	.41	.54	.46	.41	.52	.45	.40	.51	.45	.40	.38
7.0	.51	.43	.36	.51	.42	.36	.49	.42	.36	.48	.41	.36	.46	.40	.35	.33
8.0	.47	.38	.33	.46	.38	.32	.45	.37	.32	.44	.37	.32	.42	.36	.32	.30
9.0	.43	.35	.29	.42	.35	.29	.41	.34	.29	.40	.34	.29	.39	.33	.29	.27
10.0	.40	.32	.27	.39	.32	.26	.38	.31	.26	.37	.31	.26	.36	.30	.26	.24



C Range: 0 - 360DEG
 C Interval: 30.0DEG
 Test Speed: HIGH
 Temperature:25.3DEG
 Operators:LPC
 Test Date:2021-12-30

γ Range: 0 - 120DEG
 γ Interval: 1.0DEG
 Test System:EVERFINE GO-2000B_V1 SYSTEM V2.0.362
 Humidity:65.0%
 Test Distance:9.200m [K=1.0000]
 Remarks:

WEC AND CCEC

Test:U:24.00V I:0.2123A P:5.095W PF:1.000 Freq:50.00Hz Lamp Flux:12.5363x1 lm		
NAME: SF15-24V-5050-56-DMX3-RGB-G	TYPE: 硅胶	WEIGHT:
SPEC.:	DIM.: 21mm11.5mm	SERIAL No.:2021123012
MFR.: OLYMPIA	SUR.:1*0.0115	Shielding Angle:

pcc	80%			70%			50%			30%			10%			0	
pw	50%	30%	10%	50%	30%	10%	50%	30%	10%	50%	30%	10%	50%	30%	10%	0	
pfc	20%			20%			20%			20%			20%			0	
RCR	RCR:Room Cavity Ratio						Wall Exitance Coeffcients (WEC)										
0.0																	
1.0	.308	.175	.055	.301	.172	.055	.288	.165	.053	.275	.159	.051	.264	.153	.049		
2.0	.290	.159	.049	.284	.156	.048	.272	.151	.047	.261	.146	.046	.251	.142	.045		
3.0	.269	.143	.043	.263	.141	.042	.253	.137	.042	.243	.133	.041	.234	.130	.040		
4.0	.248	.129	.038	.243	.127	.038	.234	.124	.037	.225	.121	.036	.217	.118	.036		
5.0	.229	.117	.034	.225	.116	.034	.217	.113	.033	.209	.110	.033	.202	.108	.032		
6.0	.213	.107	.031	.209	.106	.030	.202	.103	.030	.195	.101	.030	.188	.099	.029		
7.0	.198	.098	.028	.195	.097	.028	.188	.095	.027	.182	.093	.027	.176	.092	.027		
8.0	.185	.090	.025	.182	.090	.025	.176	.088	.025	.171	.086	.025	.165	.085	.025		
9.0	.173	.084	.023	.171	.083	.023	.165	.082	.023	.161	.080	.023	.156	.079	.023		
10.0	.163	.078	.022	.161	.078	.022	.156	.076	.022	.151	.075	.021	.147	.074	.021		

pcc	80%			70%			50%			30%			10%			0
pw	50%	30%	10%	50%	30%	10%	50%	30%	10%	50%	30%	10%	50%	30%	10%	0
pfc	20%			20%			20%			20%			20%			0
RCR	RCR:Room Cavity Ratio						Ceiling Cavity Exitance Coefficients(CCEC)									
0.0	.192	.192	.192	.164	.164	.164	.112	.112	.112	.064	.064	.064	.021	.021	.021	
1.0	.182	.157	.136	.155	.135	.117	.106	.093	.081	.061	.054	.047	.020	.017	.015	
2.0	.173	.133	.100	.148	.115	.086	.102	.079	.060	.059	.046	.035	.019	.015	.011	
3.0	.166	.116	.076	.142	.100	.066	.097	.069	.046	.056	.040	.027	.018	.013	.009	
4.0	.158	.102	.060	.136	.088	.052	.093	.062	.037	.054	.036	.022	.017	.012	.007	
5.0	.150	.092	.049	.129	.080	.042	.089	.056	.030	.052	.033	.018	.017	.011	.006	
6.0	.143	.084	.041	.123	.072	.035	.085	.051	.025	.049	.030	.015	.016	.010	.005	
7.0	.137	.077	.035	.117	.066	.030	.081	.047	.021	.047	.027	.013	.015	.009	.004	
8.0	.130	.071	.030	.112	.061	.026	.077	.043	.019	.045	.025	.011	.015	.008	.004	
9.0	.124	.066	.027	.107	.057	.023	.074	.040	.017	.043	.024	.010	.014	.008	.003	
10.0	.118	.062	.024	.102	.054	.021	.071	.038	.015	.041	.022	.009	.013	.007	.003	

C Range: 0 - 360DEG
 C Interval: 30.0DEG
 Test Speed: HIGH
 Temperature:25.3DEG
 Operators:LPC
 Test Date:2021-12-30

γ Range: 0 - 120DEG
 γ Interval: 1.0DEG
 Test System:EVERFINE GO-2000B_V1 SYSTEM V2.0.362
 Humidity:65.0%
 Test Distance:9.200m [K=1.0000]
 Remarks:

UGR(Unified Glare Rating) Table

Test:U:24.00V I:0.2123A P:5.095W PF:1.000 Freq:50.00Hz Lamp Flux:12.5363x1 lm											
NAME: SF15-24V-5050-56-DMX3-RGB-G						TYPE:硅胶			WEIGHT:		
SPEC.:						DIM.: 21mm11.5mm			SERIAL No.:2021123012		
MFR.: OLYMPIA						SUR.:1*0.0115			Shielding Angle:		
ceiling/cavity	0.7	0.7	0.5	0.5	0.3	0.7	0.7	0.5	0.5	0.3	
walls	0.5	0.3	0.5	0.3	0.3	0.5	0.3	0.5	0.3	0.3	
working plane	0.2	0.2	0.2	0.2	0.2	0.2	0.2	0.2	0.2	0.2	
Room dimensions		Viewed crosswise					Viewed endwise				
x = 2H y = 2H	25.0	26.5	25.3	26.7	26.9	24.4	25.9	24.7	26.1	26.3	
	3H	26.7	28.1	27.0	28.4	28.6	25.7	27.1	26.0	27.4	27.6
	4H	27.5	28.8	27.8	29.1	29.3	26.2	27.5	26.5	27.7	28.0
	6H	28.1	29.3	28.4	29.6	29.9	26.3	27.6	26.7	27.9	28.2
	8H	28.3	29.5	28.6	29.8	30.1	26.3	27.6	26.7	27.8	28.1
	12H	28.5	29.7	28.8	30.0	30.3	26.3	27.5	26.7	27.8	28.1
4H	2H	25.6	27.0	26.0	27.2	27.5	25.2	26.5	25.5	26.8	27.0
	3H	27.6	28.7	27.9	29.0	29.3	26.8	28.0	27.2	28.3	28.6
	4H	28.4	29.5	28.8	29.8	30.2	27.4	28.5	27.8	28.8	29.1
	6H	29.2	30.1	29.6	30.5	30.9	27.8	28.7	28.2	29.1	29.4
	8H	29.5	30.4	29.9	30.7	31.1	27.8	28.7	28.2	29.1	29.5
	12H	29.7	30.6	30.2	30.9	31.4	27.8	28.6	28.2	29.0	29.4
8H	4H	28.8	29.6	29.2	30.0	30.4	27.9	28.8	28.3	29.1	29.5
	6H	29.7	30.4	30.1	30.8	31.2	28.5	29.2	28.9	29.6	30.0
	8H	30.1	30.7	30.5	31.2	31.6	28.6	29.3	29.1	29.7	30.2
	12H	30.5	31.0	30.9	31.5	31.9	28.7	29.3	29.2	29.7	30.2
12H	4H	28.8	29.6	29.2	30.0	30.4	27.9	28.7	28.4	29.1	29.5
	6H	29.8	30.4	30.2	30.8	31.3	28.6	29.3	29.1	29.7	30.1
	8H	30.2	30.8	30.7	31.2	31.7	28.9	29.4	29.3	29.9	30.3
Variations with the observer position at spacings:											
S = 1.0H	+ 0.1 / - 0.2					+ 0.2 / - 0.2					
1.5H	+ 0.2 / - 0.3					+ 0.3 / - 0.4					
2.0H	+ 0.1 / - 0.3					+ 0.2 / - 0.5					

CIE Pub.117, 12.54 lm Total Lamp Luminous Flux Correct (8log(F/F0) = -15.2)

C Range: 0 - 360DEG
C Interval: 30.0DEG
Test Speed: HIGH
Temperature:25.3DEG
Operators:LPC
Test Date:2021-12-30

γ Range: 0 - 120DEG
γ Interval: 1.0DEG
Test System:EVERFINE GO-2000B_V1 SYSTEM V2.0.362
Humidity:65.0%
Test Distance:9.200m [K=1.0000]
Remarks:

UTILIZATION FACTORS TABLE

Test:U:24.00V I:0.2123A P:5.095W PF:1.000 Freq:50.00Hz Lamp Flux:12.5363x1 lm		
NAME: SF15-24V-5050-56-DMX3-RGB-G	TYPE: 硅胶	WEIGHT:
SPEC.:	DIM.: 21mm11.5mm	SERIAL No.:2021123012
MFR.: OLYMPIA	SUR.:1*0.0115	Shielding Angle:

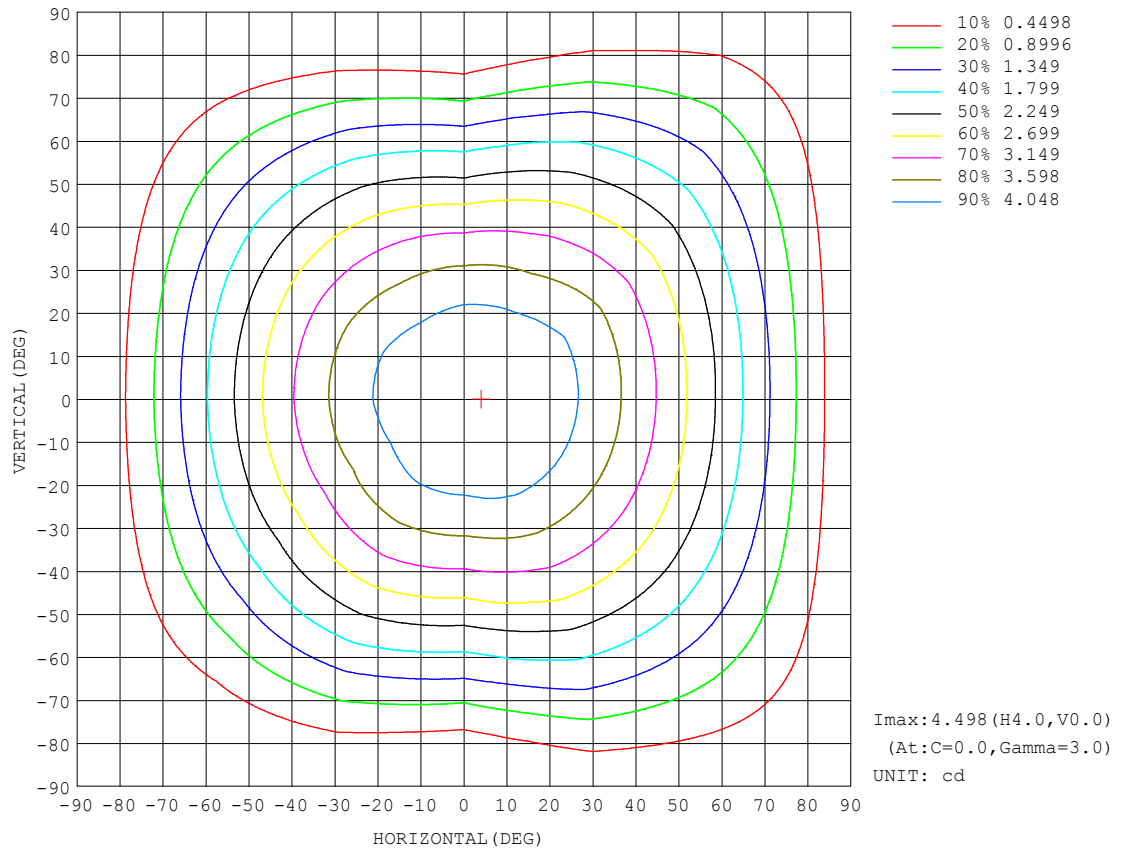
REFLECTANCE										
Ceiling	0.8	0.8	0.8	0.7	0.7	0.7	0.5	0.5	0.5	0
Walls	0.7	0.5	0.3	0.7	0.5	0.3	0.7	0.5	0.3	0
Working plane	0.2	0.2	0.2	0.2	0.2	0.2	0.2	0.2	0.2	0
ROOM INDEX	UTILIZATION FACTORS (PERCENT) $k(RI) \times RCR = 5$									
$k = 0.60$	58	46	39	57	46	39	56	45	39	33
0.80	68	56	49	67	56	49	65	55	48	41
1.00	76	65	58	75	65	58	73	66	57	50
1.25	83	73	66	82	72	65	79	71	64	57
1.50	88	78	71	87	77	71	84	76	70	62
2.00	95	87	80	93	85	79	90	83	78	70
2.50	99	91	85	97	90	84	93	87	82	74
3.00	102	95	90	100	94	89	96	91	87	78
4.00	106	101	96	104	99	95	100	95	92	83
5.00	109	104	100	106	102	98	102	98	95	86
ROOM INDEX	UF (total)									Direct
According to DIN EN 13032-2 2004			Suspended					SHR NOM = 1.25		

C Range: 0 - 360DEG
C Interval: 30.0DEG
Test Speed: HIGH
Temperature:25.3DEG
Operators:LPC
Test Date:2021-12-30

γ Range: 0 - 120DEG
 γ Interval: 1.0DEG
Test System:EVERFINE GO-2000B_V1 SYSTEM V2.0.362
Humidity:65.0%
Test Distance:9.200m [K=1.0000]
Remarks:

ISOCANDELA DIAGRAM

Test:U:24.00V I:0.2123A P:5.095W PF:1.000 Freq:50.00Hz Lamp Flux:12.5363x1 lm		
NAME: SF15-24V-5050-56-DMX3-RGB-G	TYPE: 硅胶	WEIGHT:
SPEC.:	DIM.: 21mm11.5mm	SERIAL No.:2021123012
MFR.: OLYMPIA	SUR.:1*0.0115	Shielding Angle:

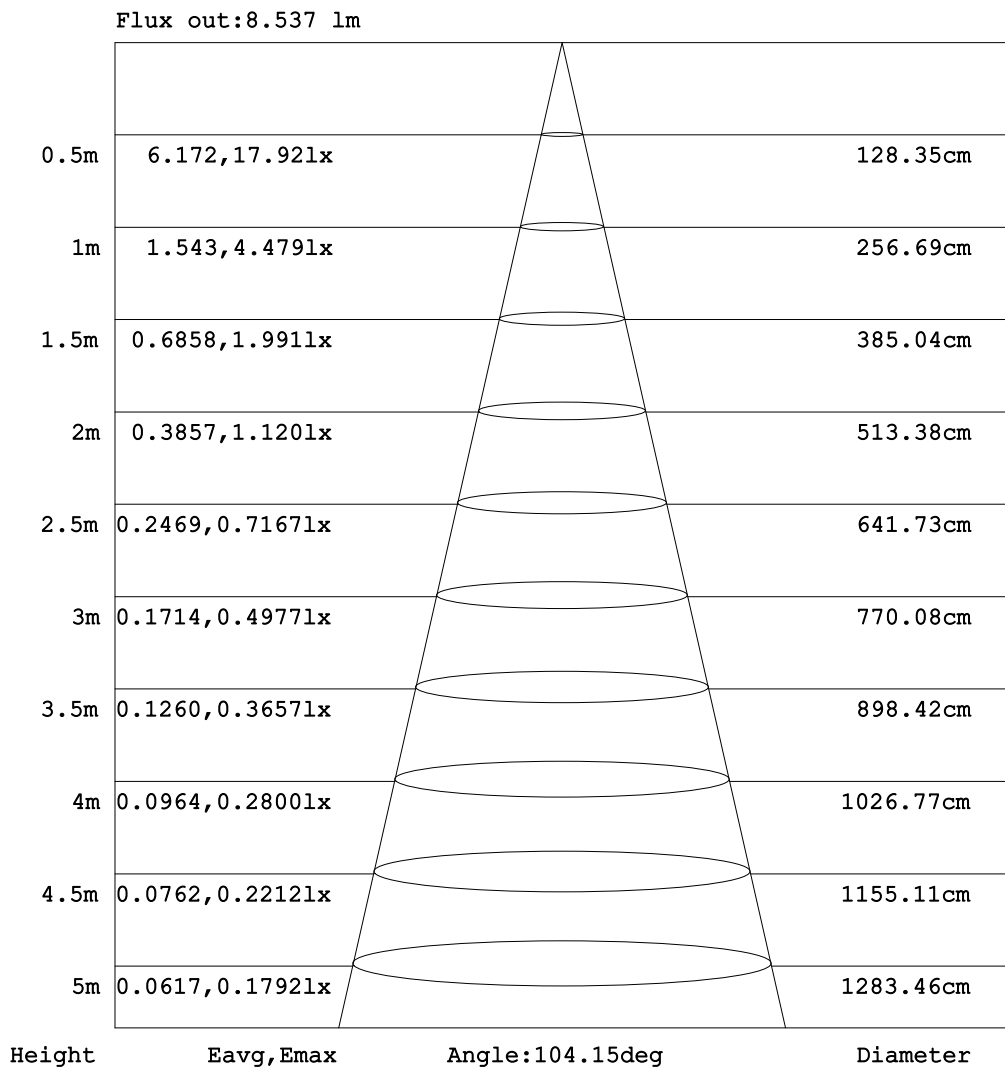


C Range: 0 - 360DEG
C Interval: 30.0DEG
Test Speed: HIGH
Temperature: 25.3DEG
Operators: LPC
Test Date: 2021-12-30

γ Range: 0 - 120DEG
 γ Interval: 1.0DEG
Test System: EVERFINE GO-2000B_V1 SYSTEM V2.0.362
Humidity: 65.0%
Test Distance: 9.200m [K=1.0000]
Remarks:

AAI Figure

Test:U:24.00V I:0.2123A P:5.095W PF:1.000 Freq:50.00Hz Lamp Flux:12.5363x1 lm		
NAME: SF15-24V-5050-56-DMX3-RGB-G	TYPE: 硅胶	WEIGHT:
SPEC.:	DIM.: 21mm11.5mm	SERIAL No.:2021123012
MFR.: OLYMPIA	SUR.:1*0.0115	Shielding Angle:



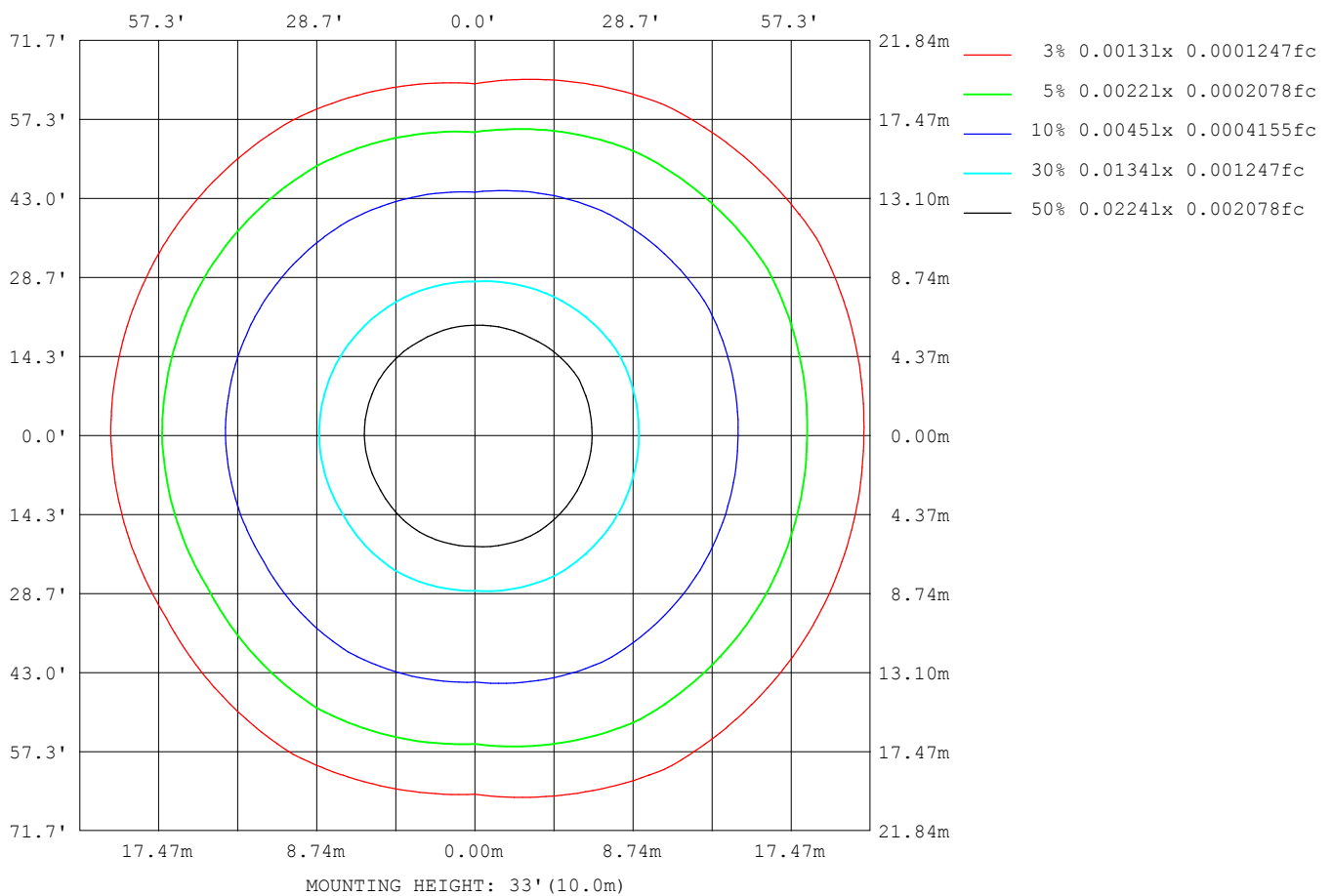
Note:The Curves indicate the illuminated area and the average illumination when the luminaire is at different distance.

C Range: 0 - 360DEG
C Interval: 30.0DEG
Test Speed: HIGH
Temperature:25.3DEG
Operators:LPC
Test Date:2021-12-30

γ Range: 0 - 120DEG
γ Interval: 1.0DEG
Test System:EVERFINE GO-2000B_V1 SYSTEM V2.0.362
Humidity:65.0%
Test Distance:9.200m [K=1.0000]
Remarks:

ISOLUX DIAGRAM

Test:U:24.00V I:0.2123A P:5.095W PF:1.000 Freq:50.00Hz Lamp Flux:12.5363x1 lm		
NAME: SF15-24V-5050-56-DMX3-RGB-G	TYPE: 硅胶	WEIGHT:
SPEC.:	DIM.: 21mm11.5mm	SERIAL No.:2021123012
MFR.: OLYMPIA	SUR.:1*0.0115	Shielding Angle:



C Range: 0 - 360DEG
C Interval: 30.0DEG
Test Speed: HIGH
Temperature:25.3DEG
Operators:LPC
Test Date:2021-12-30

γ Range: 0 - 120DEG
 γ Interval: 1.0DEG
Test System:EVERFINE GO-2000B_V1 SYSTEM V2.0.362
Humidity:65.0%
Test Distance:9.200m [K=1.0000]
Remarks:

LED Avg.L Report

Test:U:24.00V I:0.2123A P:5.095W PF:1.000 Freq:50.00Hz Lamp Flux:12.5363x1 lm		
NAME: SF15-24V-5050-56-DMX3-RGB-G	TYPE:硅胶	WEIGHT:
SPEC.:	DIM.: 21mm11.5mm	SERIAL No.:2021123012
MFR.: OLYMPIA	SUR.:1*0.0115	Shielding Angle:

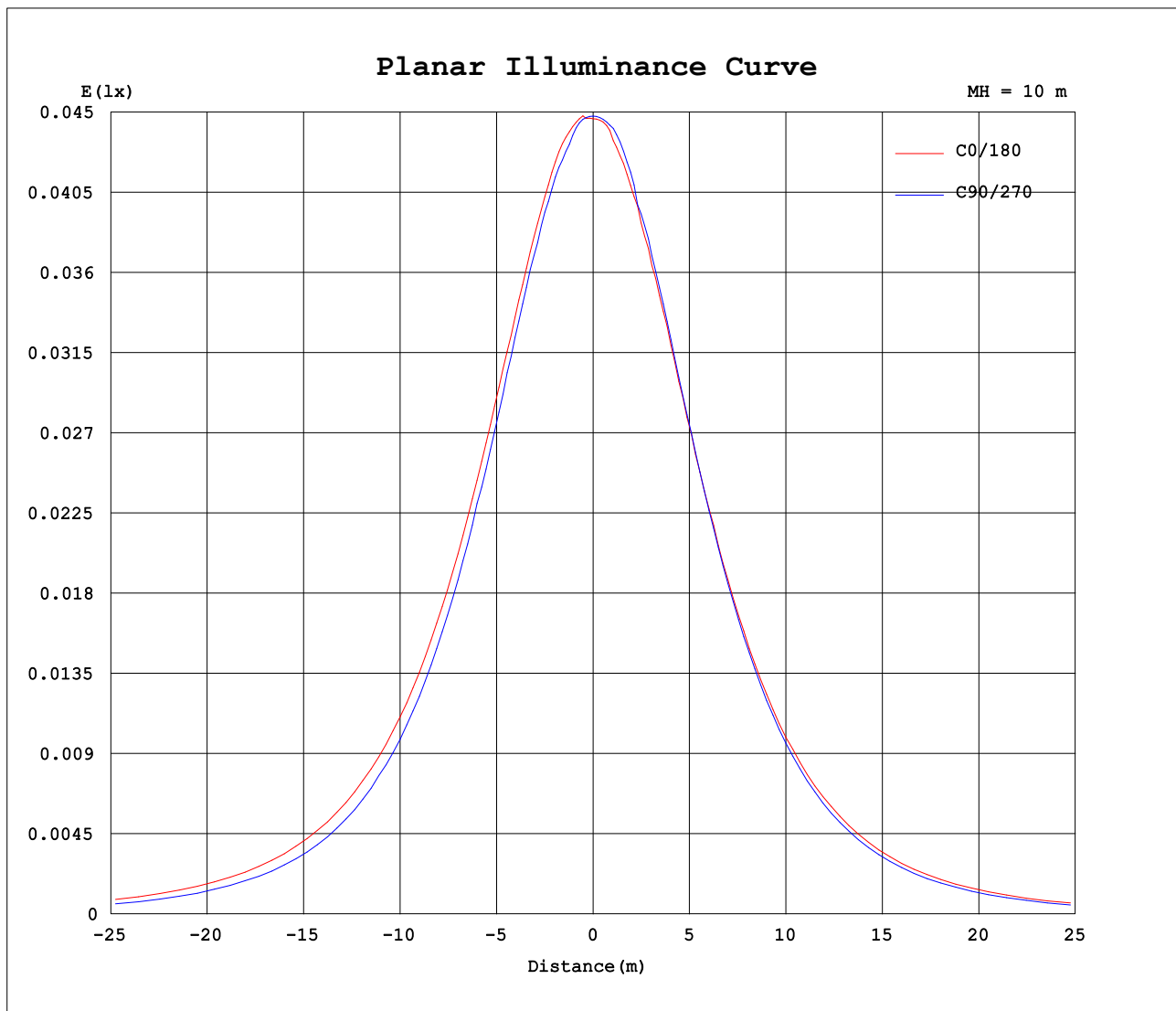
AvgL	cd/m2
L_0~180 (65) av	330
L_0~180 (75) av	293
L_0~180 (85) av	253
L_90~270 (65) av	264
L_90~270 (75) av	181
L_90~270 (85) av	0
L_45 (65) av	330
L_45 (75) av	295
L_45 (85) av	243

Standard: GB/T 29293-2012

C Range: 0 - 360DEG
C Interval: 30.0DEG
Test Speed: HIGH
Temperature:25.3DEG
Operators:LPC
Test Date:2021-12-30

γ Range: 0 - 120DEG
γ Interval: 1.0DEG
Test System:EVERFINE GO-2000B_V1 SYSTEM V2.0.362
Humidity:65.0%
Test Distance:9.200m [K=1.0000]
Remarks:

Planar Illuminance Curve



C Range: 0 - 360DEG
C Interval: 30.0DEG
Test Speed: HIGH
Temperature: 25.3DEG
Operators: LPC
Test Date: 2021-12-30

γ Range: 0 - 120DEG
 γ Interval: 1.0DEG
Test System: EVERFINE GO-2000B_V1 SYSTEM V2.0.362
Humidity: 65.0%
Test Distance: 9.200m [K=1.0000]
Remarks:

LUMINOUS DISTRIBUTION INTENSITY DATA

Test:U:24.00V I:0.2123A P:5.095W PF:1.000 Freq:50.00Hz Lamp Flux:12.5363x1 lm		
NAME: SF15-24V-5050-56-DMX3-RGB-G	TYPE: 硅胶	WEIGHT:
SPEC.:	DIM.: 21mm11.5mm	SERIAL No.:2021123012
MFR.: OLYMPIA	SUR.:1*0.0115	Shielding Angle:

Table--1

UNIT: cd

C (DEG) γ (DEG)	0	30	60	90	120	150	180	210	240	270	300	330						
0	4.46	4.47	4.46	4.48	4.47	4.47	4.46	4.47	4.46	4.48	4.47	4.47						
5	4.49	4.47	4.47	4.46	4.47	4.40	4.45	4.48	4.42	4.48	4.45	4.47						
10	4.48	4.44	4.46	4.39	4.40	4.32	4.35	4.39	4.38	4.42	4.40	4.45						
15	4.39	4.34	4.37	4.29	4.27	4.20	4.22	4.27	4.22	4.29	4.30	4.41						
20	4.26	4.23	4.23	4.13	4.12	4.04	4.08	4.11	4.07	4.13	4.15	4.28						
25	4.11	4.08	4.06	3.92	3.93	3.85	3.89	3.91	3.87	3.91	3.97	4.12						
30	3.91	3.88	3.84	3.69	3.70	3.60	3.66	3.68	3.62	3.66	3.75	3.94						
35	3.68	3.66	3.60	3.41	3.45	3.35	3.41	3.43	3.38	3.37	3.49	3.72						
40	3.42	3.39	3.33	3.11	3.17	3.05	3.13	3.14	3.10	3.06	3.24	3.47						
45	3.13	3.10	3.05	2.77	2.86	2.74	2.81	2.83	2.79	2.71	2.98	3.19						
50	2.83	2.79	2.74	2.43	2.52	2.40	2.48	2.50	2.47	2.35	2.68	2.89						
55	2.49	2.47	2.42	2.06	2.18	2.05	2.14	2.15	2.13	1.98	2.37	2.57						
60	2.15	2.13	2.07	1.70	1.82	1.68	1.77	1.78	1.77	1.60	2.03	2.23						
65	1.79	1.77	1.72	1.34	1.47	1.32	1.42	1.43	1.42	1.22	1.67	1.88						
70	1.43	1.42	1.37	0.94	1.09	0.95	1.04	1.05	1.04	0.85	1.33	1.52						
75	1.07	1.05	1.01	0.59	0.72	0.60	0.68	0.69	0.68	0.49	0.96	1.16						
80	0.70	0.68	0.65	0.23	0.39	0.29	0.36	0.37	0.33	0.17	0.60	0.78						
85	0.38	0.35	0.33	0.00	0.15	0.09	0.13	0.15	0.07	0.00	0.28	0.44						
90	0.17	0.12	0.09	0.00	0.04	0.00	0.00	0.03	0.00	0.00	0.04	0.18						
95	0.05	0.00	0.02	0.00	0.03	0.00	0.00	0.00	0.00	0.00	0.00	0.05						
100	0.01	0.00	0.02	0.00	0.02	0.00	0.00	0.00	0.00	0.00	0.00	0.00						
105	0.00	0.00	0.01	0.00	0.01	0.00	0.00	0.00	0.00	0.00	0.00	0.00						
110	0.00	0.00	0.00	0.00	0.01	0.00	0.00	0.00	0.00	0.00	0.00	0.00						
115	0.00	0.00	0.00	0.00	0.01	0.01	0.00	0.00	0.00	0.00	0.00	0.00						
120	0.00	0.00	0.00	0.00	0.01	0.01	0.00	0.00	0.00	0.00	0.00	0.00						
125	0.00	0.00	0.00	0.00	0.00	0.00	0.00	0.00	0.00	0.00	0.00	0.00						
130	0.00	0.00	0.00	0.00	0.00	0.00	0.00	0.00	0.00	0.00	0.00	0.00						
135	0.00	0.00	0.00	0.00	0.00	0.00	0.00	0.00	0.00	0.00	0.00	0.00						
140	0.00	0.00	0.00	0.00	0.00	0.00	0.00	0.00	0.00	0.00	0.00	0.00						
145	0.00	0.00	0.00	0.00	0.00	0.00	0.00	0.00	0.00	0.00	0.00	0.00						
150	0.00	0.00	0.00	0.00	0.00	0.00	0.00	0.00	0.00	0.00	0.00	0.00						
155	0.00	0.00	0.00	0.00	0.00	0.00	0.00	0.00	0.00	0.00	0.00	0.00						
160	0.00	0.00	0.00	0.00	0.00	0.00	0.00	0.00	0.00	0.00	0.00	0.00						
165	0.00	0.00	0.00	0.00	0.00	0.00	0.00	0.00	0.00	0.00	0.00	0.00						
170	0.00	0.00	0.00	0.00	0.00	0.00	0.00	0.00	0.00	0.00	0.00	0.00						
175	0.00	0.00	0.00	0.00	0.00	0.00	0.00	0.00	0.00	0.00	0.00	0.00						
180	0.00	0.00	0.00	0.00	0.00	0.00	0.00	0.00	0.00	0.00	0.00	0.00						

C Range: 0 - 360DEG
C Interval: 30.0DEG
Test Speed: HIGH
Temperature:25.3DEG
Operators:LPC
Test Date:2021-12-30

γ Range: 0 - 120DEG
γ Interval: 1.0DEG
Test System:EVERFINE GO-2000B_V1 SYSTEM V2.0.362
Humidity:65.0%
Test Distance:9.200m [K=1.0000]
Remarks:

Photometric Data Table [cd]

G/C	0.0	30.0	60.0	90.0	120.0	150.0	180.0	210.0	240.0	270.0
0.0	4.463	4.468	4.458	4.478	4.468	4.473	4.463	4.468	4.458	4.478
3.0	4.498	4.468	4.478	4.478	4.468	4.447	4.463	4.488	4.453	4.478
6.0	4.493	4.471	4.469	4.442	4.458	4.387	4.412	4.458	4.407	4.483
9.0	4.488	4.463	4.459	4.392	4.418	4.332	4.372	4.413	4.387	4.443
12.0	4.448	4.397	4.438	4.347	4.358	4.296	4.302	4.347	4.302	4.373
15.0	4.388	4.342	4.373	4.287	4.272	4.196	4.221	4.267	4.221	4.287
18.0	4.322	4.292	4.297	4.206	4.187	4.096	4.146	4.177	4.116	4.192
21.0	4.237	4.216	4.197	4.091	4.091	3.990	4.055	4.071	4.005	4.086
24.0	4.141	4.106	4.101	3.985	3.971	3.895	3.920	3.956	3.905	3.951
27.0	4.031	3.995	3.976	3.829	3.845	3.744	3.809	3.820	3.754	3.815
30.0	3.910	3.879	3.840	3.689	3.705	3.603	3.658	3.684	3.623	3.659
33.0	3.775	3.739	3.699	3.523	3.549	3.452	3.507	3.529	3.492	3.488
36.0	3.629	3.593	3.544	3.352	3.393	3.281	3.347	3.373	3.336	3.312
39.0	3.478	3.437	3.388	3.176	3.222	3.105	3.176	3.197	3.160	3.127
42.0	3.308	3.276	3.217	2.980	3.041	2.924	3.010	3.016	2.975	2.921
45.0	3.132	3.100	3.046	2.774	2.855	2.738	2.809	2.830	2.794	2.715
48.0	2.946	2.919	2.865	2.592	2.659	2.537	2.618	2.634	2.608	2.498
51.0	2.760	2.733	2.674	2.356	2.458	2.331	2.427	2.433	2.402	2.277
54.0	2.554	2.537	2.478	2.140	2.247	2.120	2.211	2.222	2.196	2.056
57.0	2.358	2.336	2.277	1.924	2.036	1.904	1.994	2.001	1.984	1.835
60.0	2.147	2.125	2.071	1.698	1.820	1.683	1.773	1.785	1.768	1.599
63.0	1.931	1.909	1.860	1.492	1.599	1.482	1.562	1.574	1.572	1.383
66.0	1.715	1.708	1.649	1.251	1.388	1.246	1.341	1.348	1.336	1.152
69.0	1.503	1.487	1.448	1.015	1.167	1.025	1.125	1.121	1.110	0.9203
72.0	1.283	1.266	1.227	0.7983	0.9407	0.8034	0.9088	0.9054	0.8888	0.7043
75.0	1.066	1.050	1.006	0.5873	0.7245	0.5975	0.6779	0.6892	0.6827	0.4882
78.0	0.8451	0.8286	0.7898	0.3613	0.5183	0.4017	0.5018	0.4881	0.4567	0.2871
81.0	0.6388	0.6125	0.5836	0.1804	0.3273	0.2408	0.3062	0.3221	0.2707	0.1160
84.0	0.4430	0.4165	0.3877	0.0249	0.1814	0.1153	0.1704	0.1814	0.1101	0.0002
87.0	0.2819	0.2358	0.2117	0	0.0807	0.0450	0.0551	0.0807	0.0050	0
90.0	0.1662	0.1153	0.0908	0	0.0353	0	0	0.0253	0	0
93.0	0.0856	0.0350	0.0353	0	0.0302	0	0	0.0050	0	0
96.0	0.0303	0	0.0151	0	0.0251	0	0	0	0	0
99.0	0.0101	0	0.0151	0	0.0202	0	0	0	0	0
102.0	0	0	0.0151	0	0.0201	0	0	0	0	0
105.0	0	0	0.0051	0	0.0051	0	0	0	0	0
108.0	0	0	0.0001	0	0.0050	0	0	0	0	0
111.0	0	0	0	0	0.0050	0	0	0	0	0
114.0	0	0	0	0	0.0100	0.0101	0	0	0	0
117.0	0	0	0	0	0.0101	0.0101	0	0	0	0
120.0	0	0	0	0	0.0101	0.0101	0	0	0	0
G/C	300.0	330.0								
0.0	4.468	4.473								
3.0	4.463	4.473								
6.0	4.451	4.464								
9.0	4.413	4.455								
12.0	4.382	4.446								
15.0	4.297	4.408								
18.0	4.211	4.337								
21.0	4.116	4.247								
24.0	4.005	4.161								
27.0	3.879	4.056								
30.0	3.749	3.941								
33.0	3.588	3.815								
36.0	3.442	3.679								
39.0	3.296	3.524								
42.0	3.151	3.363								
45.0	2.985	3.187								
48.0	2.804	3.011								
51.0	2.618	2.825								
54.0	2.427	2.634								
57.0	2.226	2.438								
60.0	2.030	2.227								
63.0	1.813	2.016								
66.0	1.607	1.805								
69.0	1.396	1.594								
72.0	1.175	1.378								
75.0	0.9593	1.157								
78.0	0.7481	0.9305								
81.0	0.5320	0.7192								
84.0	0.3411	0.5133								
87.0	0.1504	0.3272								
90.0	0.0398	0.1813								

C Range: 0 - 360DEG
 C Interval: 30.0DEG
 Test Speed: HIGH
 Temperature: 25.3DEG
 Operators: LPC
 Test Date: 2021-12-30

γ Range: 0 - 120DEG
 γ Interval: 1.0DEG
 Test System: EVERFINE GO-2000B_V1 SYSTEM V2.0.362
 Humidity: 65.0%
 Test Distance: 9.200m [K=1.0000]
 Remarks:

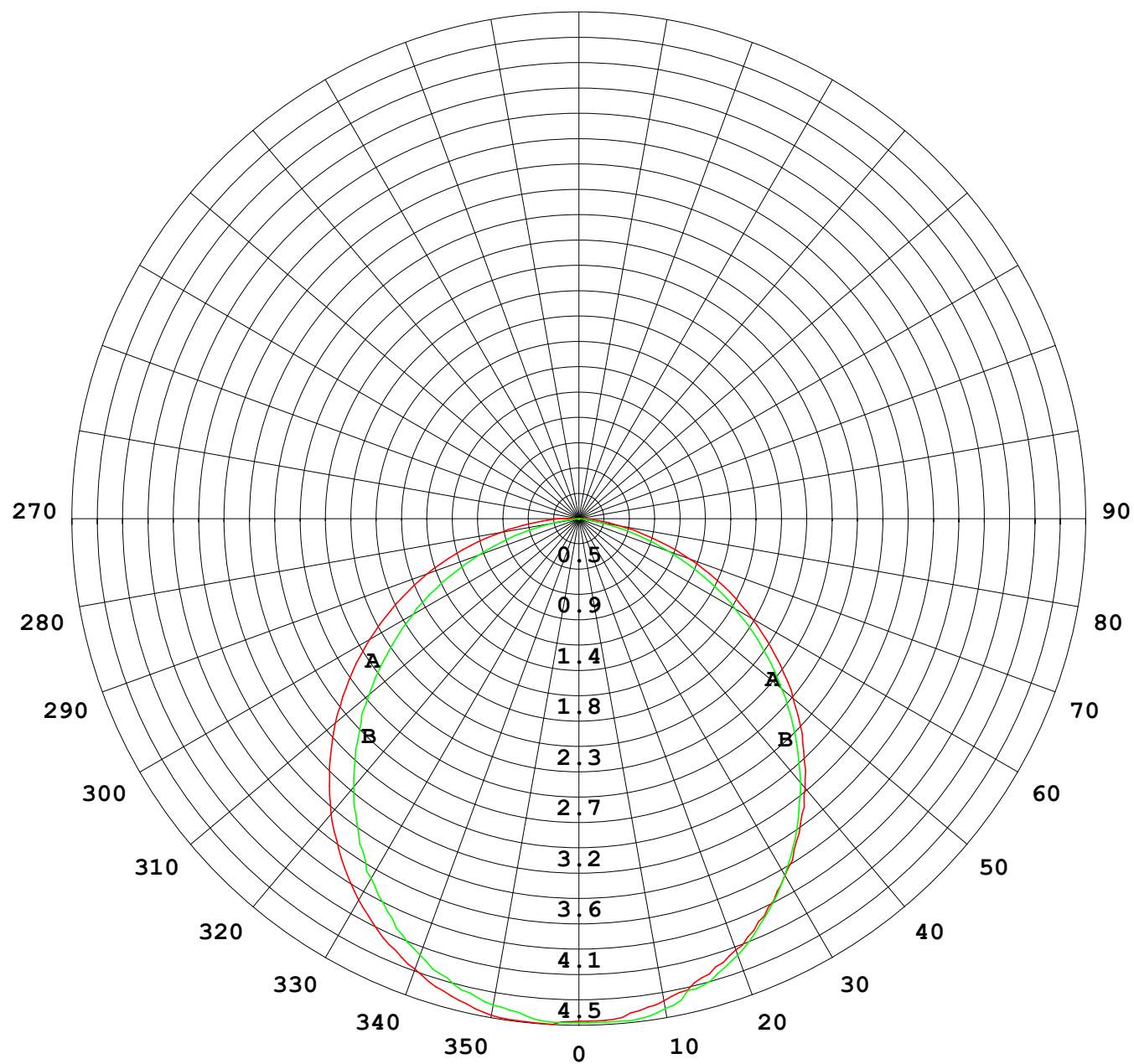
Photometric Data Table [cd]

93.0	0	0.0907
96.0	0	0.0304
99.0	0	0.0000
102.0	0	0
105.0	0	0
108.0	0	0
111.0	0	0
114.0	0	0
117.0	0	0
120.0	0	0

C Range: 0 - 360DEG
C Interval: 30.0DEG
Test Speed: HIGH
Temperature: 25.3DEG
Operators: LPC
Test Date: 2021-12-30

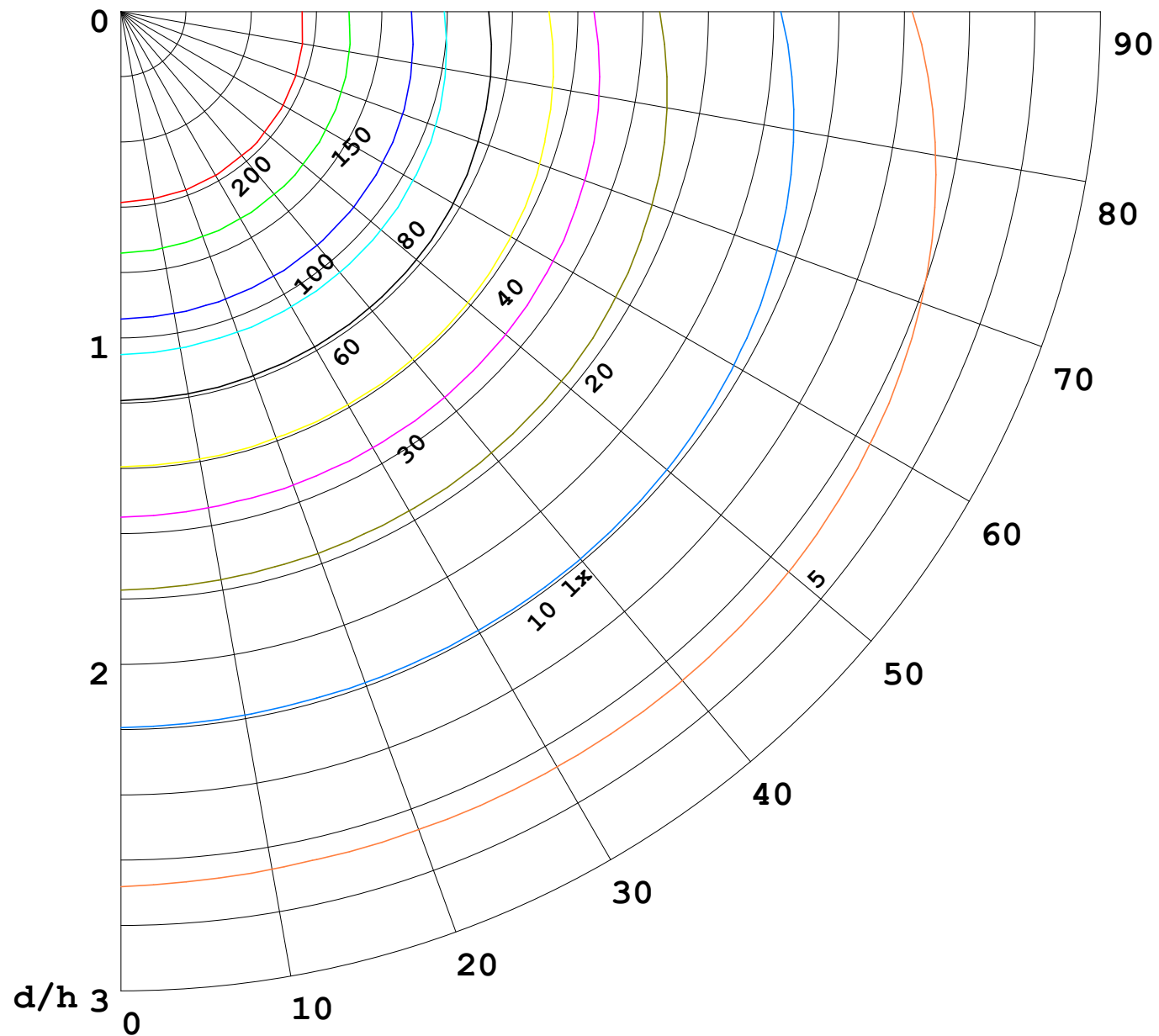
γ Range: 0 - 120DEG
γ Interval: 1.0DEG
Test System: EVERFINE GO-2000B_V1 SYSTEM V2.0.362
Humidity: 65.0%
Test Distance: 9.200m [K=1.0000]
Remarks:

I (cd)



1000 lm

$\kappa = 1$



F = 5000 lm
 K = 0.7
 Hcc = 0.0 m
 Hfc = 0.0 m
 Eave = 100 lx

	Pcc	Pw	Pfc
—	70	50	30
—	50	30	20

