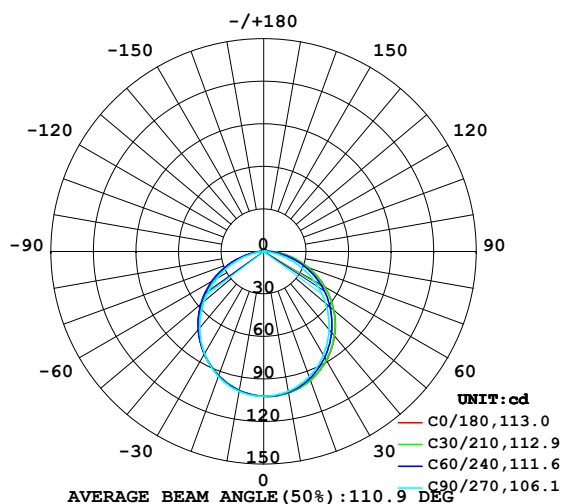


## LUMINAIRE PHOTOMETRIC TEST REPORT

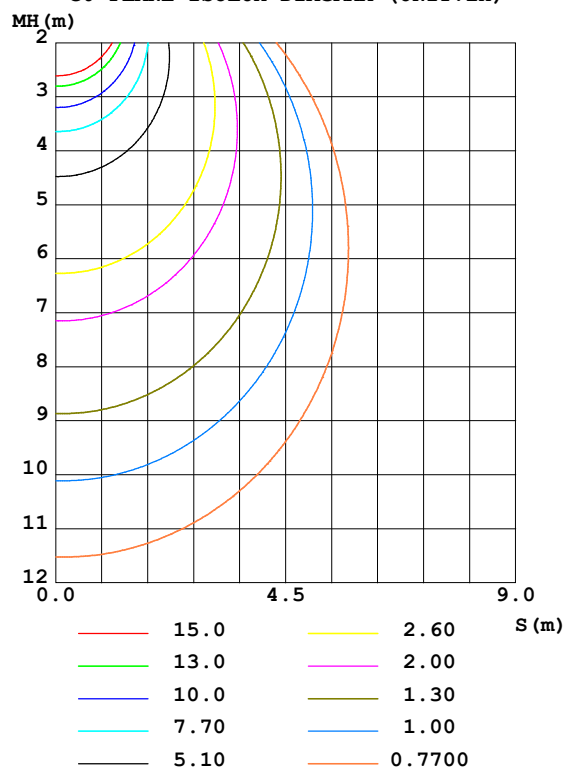
Test:U:48.00V I:0.2210A P:10.61W PF:1.000 Freq:50.00Hz Lamp Flux:294.45x1 lm		
NAME: SF15-48V-5050-60-2700-80	TYPE: 硅胶	WEIGHT:
SPEC.:	DIM.: 21mm*11.5mm	SERIAL No.:2021122212
MFR.: OLYMPIA	SUR.:1*0.0115	Shielding Angle:

DATA OF LAMP		PHOTOMETRIC DATA Eff: 27.76 lm/W			
MODEL	5050	I <sub>max</sub> (cd)	102.3	S/MH (C0/180)	1.22
NOMINAL POWER (W)	10	LOR (%)	100.0	S/MH (C90/270)	1.22
RATED VOLTAGE (V)	48	TOTAL FLUX (lm)	294.45	η UP, DN (C0-180)	0.9, 49.9
NOMINAL FLUX (lm)	294.45	CIE CLASS	DIRECT	η UP, DN (C180-360)	0.6, 48.6
LAMPS INSIDE	1	η up (%)	1.6	CIBSE SHR NOM	1.25
TEST VOLTAGE (V)	48	η down (%)	98.4	CIBSE SHR MAX	1.35

LUMINOUS INTENSITY DISTRIBUTION DIAGRAM



C0 PLANE ISOLUX DIAGRAM (UNIT:lx)



C Range: 0 - 360DEG  
 C Interval: 30.0DEG  
 Test Speed: HIGH  
 Temperature: 25.3DEG  
 Operators: LPC  
 Test Date: 2021-12-22

γ Range: 0 - 120DEG  
 γ Interval: 1.0DEG  
 Test System: EVERFINE GO-2000B\_V1 SYSTEM V2.0.362  
 Humidity: 65.0%  
 Test Distance: 9.200m [K=1.0000]  
 Remarks:

## ZONAL FLUX DIAGRAM

## ZONAL FLUX DIAGRAM:

$\gamma$	C0	C45	C90	C135	C180	C225	C270	C315	$\gamma$	$\Phi$ zone	$\Phi$ total	%lum, lamp
10	101.3	101.0	100.2	99.35	99.41	99.55	100.2	101.2	0- 10	9.662	9.662	3.28,3.28
20	96.61	95.98	93.99	92.87	93.13	93.09	93.68	95.96	10- 20	27.60	37.26	12.7,12.7
30	88.63	87.37	84.24	83.33	83.64	83.63	83.49	87.20	20- 30	41.56	78.82	26.8,26.8
40	77.85	76.03	71.85	71.24	71.56	71.68	70.32	76.01	30- 40	49.82	128.6	43.7,43.7
50	64.64	62.80	56.98	57.08	57.30	57.66	54.99	63.20	40- 50	51.49	180.1	61.2,61.2
60	49.73	48.00	40.73	41.31	41.44	41.88	38.16	48.57	50- 60	46.51	226.6	77,77
70	33.63	32.00	23.73	24.64	24.76	25.13	21.24	32.64	60- 70	35.57	262.2	89.1,89.1
80	17.42	15.95	7.938	9.389	9.743	9.487	5.962	16.42	70- 80	20.69	282.9	96.1,96.1
90	5.144	3.900	0.9851	1.995	1.942	1.564	0.5433	3.828	80- 90	6.956	289.9	98.4,98.4
100	1.413	1.550	1.151	1.698	1.238	1.243	0.6730	1.128	90-100	1.833	291.7	99.1,99.1
110	1.382	1.563	1.318	1.722	1.241	1.257	0.8788	1.128	100-110	1.387	293.1	99.5,99.5
120	1.498	1.153	0.5630	1.802	0.2266	0.8598	1.020	1.189	110-120	1.312	294.4	100,100
130	0	0	0	0	0	0	0	0	120-130	0.0595	294.4	100,100
140	0	0	0	0	0	0	0	0	130-140	0	294.4	100,100
150	0	0	0	0	0	0	0	0	140-150	0	294.4	100,100
160	0	0	0	0	0	0	0	0	150-160	0	294.4	100,100
170	0	0	0	0	0	0	0	0	160-170	0	294.4	100,100
180	0	0	0	0	0	0	0	0	170-180	0	294.4	100,100
DEG	LUMINOUS INTENSITY:cd									UNIT:lm		

Conical surface Flux(90deg): 154.6 lm

%lum = 52.5%

%lamp = 52.5%

Conical surface Flux(120deg): 226.64 lm

%lum = 77.0%

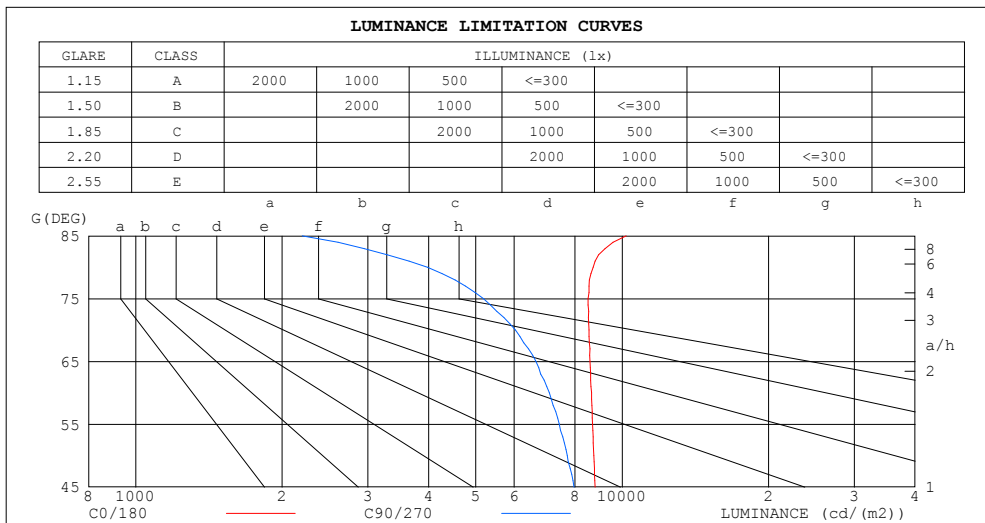
%lamp = 77.0%

C Range: 0 - 360DEG  
 C Interval: 30.0DEG  
 Test Speed: HIGH  
 Temperature:25.3DEG  
 Operators:LPC  
 Test Date:2021-12-22

$\gamma$  Range: 0 - 120DEG  
 $\gamma$  Interval: 1.0DEG  
 Test System:EVERFINE GO-2000B\_V1 SYSTEM V2.0.362  
 Humidity:65.0%  
 Test Distance:9.200m [K=1.0000]  
 Remarks:

## LUMINANCE LIMITATION CURVES

Test:U:48.00V I:0.2210A P:10.61W PF:1.000 Freq:50.00Hz Lamp Flux:294.45x1 lm		
NAME: SF15-48V-5050-60-2700-80	TYPE: 硅胶	WEIGHT:
SPEC.:	DIM.: 21mm*11.5mm	SERIAL No.:2021122212
MFR.: OLYMPIA	SUR.:1*0.0115	Shielding Angle:



LUMINANCE cd/(m2)		
G (DEG)	C0/180	C90/270
85	10184	2198
80	8723	3975
75	8509	5186
70	8551	6033
65	8581	6647
60	8648	7084
55	8697	7421
50	8745	7708
45	8794	7959

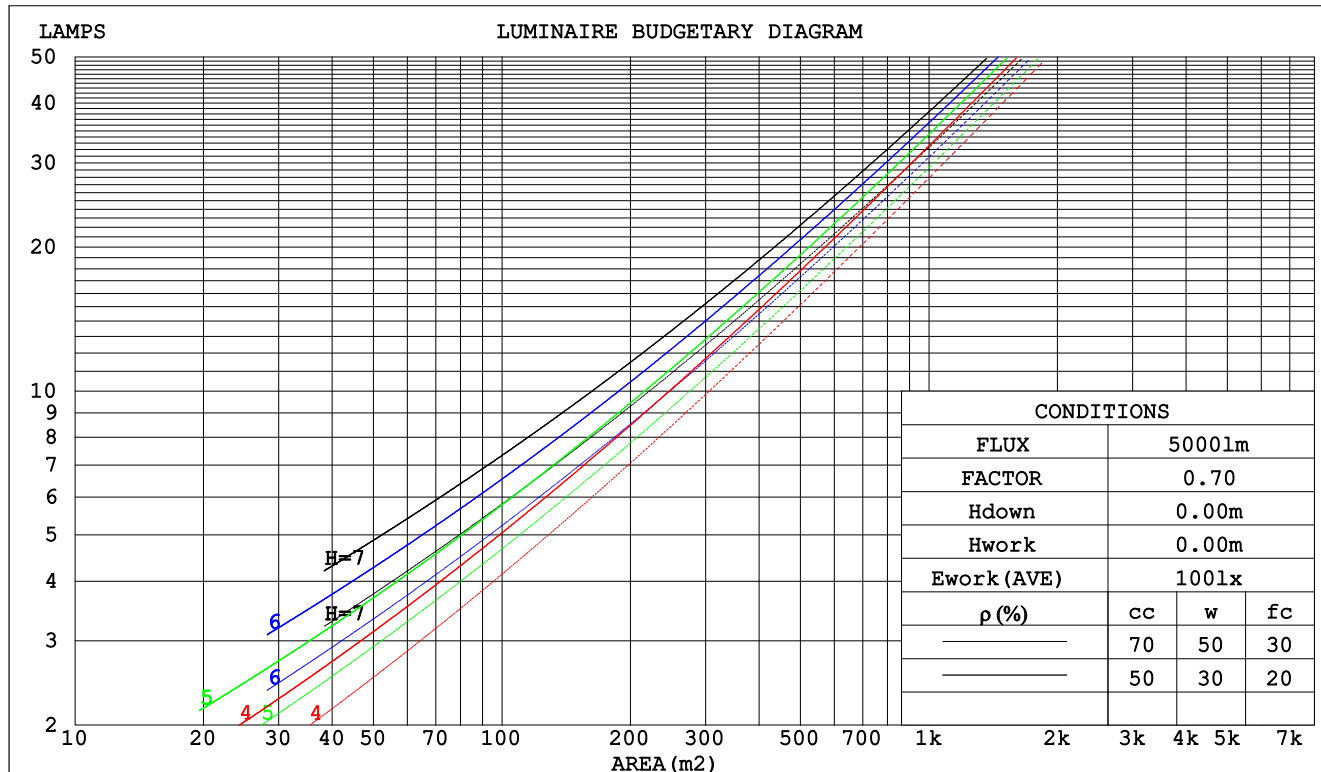
C Range: 0 - 360DEG  
C Interval: 30.0DEG  
Test Speed: HIGH  
Temperature:25.3DEG  
Operators:LPC  
Test Date:2021-12-22

$\gamma$  Range: 0 - 120DEG  
 $\gamma$  Interval: 1.0DEG  
Test System:EVERFINE GO-2000B\_V1 SYSTEM V2.0.362  
Humidity:65.0%  
Test Distance:9.200m [K=1.0000]  
Remarks:

## CU AND LUMINAIRE BUDGETARY ESTIMATE DIAGRAM

Test:U:48.00V I:0.2210A P:10.61W PF:1.000 Freq:50.00Hz Lamp Flux:294.45x1 lm		
NAME: SF15-48V-5050-60-2700-80	TYPE:硅胶	WEIGHT:
SPEC.:	DIM.: 21mm*11.5mm	SERIAL No.:2021122212
MFR.: OLYMPIA	SUR.:1*0.0115	Shielding Angle:

pcc	80%			70%			50%			30%			10%			0
pw	50%	30%	10%	50%	30%	10%	50%	30%	10%	50%	30%	10%	50%	30%	10%	0
pfc	20%			20%			20%			20%			20%			0
RCR	Coefficients of Utilization(CU)															
0.0	1.19	1.19	1.19	1.16	1.16	1.16	1.10	1.10	1.10	1.05	1.05	1.05	1.01	1.01	1.01	.98
1.0	1.03	.99	.95	1.01	.97	.93	.96	.93	.90	.92	.89	.87	.88	.86	.84	.82
2.0	.90	.83	.77	.88	.81	.76	.84	.79	.74	.80	.76	.72	.77	.74	.70	.68
3.0	.79	.71	.64	.77	.69	.63	.74	.67	.62	.71	.65	.61	.68	.63	.59	.57
4.0	.70	.61	.54	.68	.60	.54	.66	.58	.53	.63	.57	.52	.61	.55	.51	.49
5.0	.62	.53	.47	.61	.53	.46	.59	.51	.46	.57	.50	.45	.55	.49	.44	.42
6.0	.56	.47	.41	.55	.47	.40	.53	.46	.40	.51	.45	.39	.50	.44	.39	.37
7.0	.51	.42	.36	.50	.42	.36	.48	.41	.35	.47	.40	.35	.45	.39	.35	.33
8.0	.46	.38	.32	.46	.37	.32	.44	.37	.32	.43	.36	.31	.41	.35	.31	.29
9.0	.43	.34	.29	.42	.34	.29	.41	.33	.28	.39	.33	.28	.38	.32	.28	.26
10.0	.39	.31	.26	.39	.31	.26	.38	.31	.26	.37	.30	.26	.36	.30	.25	.24



C Range: 0 - 360DEG  
 C Interval: 30.0DEG  
 Test Speed: HIGH  
 Temperature:25.3DEG  
 Operators:LPC  
 Test Date:2021-12-22

γ Range: 0 - 120DEG  
 γ Interval: 1.0DEG  
 Test System:EVERFINE GO-2000B\_V1 SYSTEM V2.0.362  
 Humidity:65.0%  
 Test Distance:9.200m [K=1.0000]  
 Remarks:

## WEC AND CCEC

Test:U:48.00V I:0.2210A P:10.61W PF:1.000 Freq:50.00Hz Lamp Flux:294.45x1 lm					
NAME: SF15-48V-5050-60-2700-80			TYPE:硅胶		WEIGHT:
SPEC.:			DIM.: 21mm*11.5mm		SERIAL No.:2021122212
MFR.: OLYMPIA			SUR.:1*0.0115		Shielding Angle:

pcc	80%			70%			50%			30%			10%			0	
pw	50%	30%	10%	50%	30%	10%	50%	30%	10%	50%	30%	10%	50%	30%	10%	0	
pfc	20%			20%			20%			20%			20%			0	
RCR	RCR:Room Cavity Ratio						Wall Exitance Coeffcients(WEC)										
0.0																	
1.0	.315	.179	.057	.307	.175	.056	.293	.168	.054	.280	.161	.052	.268	.155	.050		
2.0	.294	.161	.049	.287	.158	.049	.275	.153	.047	.263	.148	.046	.252	.143	.045		
3.0	.271	.144	.043	.265	.142	.043	.254	.138	.042	.244	.133	.041	.234	.130	.040		
4.0	.250	.130	.038	.244	.128	.038	.234	.124	.037	.225	.121	.036	.217	.118	.036		
5.0	.231	.117	.034	.226	.116	.034	.217	.113	.033	.209	.110	.033	.201	.107	.032		
6.0	.214	.107	.031	.209	.106	.030	.202	.103	.030	.194	.101	.030	.187	.099	.029		
7.0	.199	.098	.028	.195	.097	.028	.188	.095	.027	.181	.093	.027	.175	.091	.027		
8.0	.186	.091	.025	.182	.090	.025	.176	.088	.025	.170	.086	.025	.164	.084	.025		
9.0	.174	.084	.023	.171	.083	.023	.165	.082	.023	.160	.080	.023	.155	.079	.023		
10.0	.163	.078	.022	.161	.078	.022	.155	.076	.021	.151	.075	.021	.146	.073	.021		

pcc	80%			70%			50%			30%			10%			0
pw	50%	30%	10%	50%	30%	10%	50%	30%	10%	50%	30%	10%	50%	30%	10%	0
pfc	20%			20%			20%			20%			20%			0
RCR	RCR:Room Cavity Ratio						Ceiling Cavity Exitance Coefficients(CCEC)									
0.0	.202	.202	.202	.173	.173	.173	.118	.118	.118	.068	.068	.068	.022	.022	.022	
1.0	.193	.168	.146	.165	.144	.126	.113	.099	.087	.065	.057	.051	.021	.018	.016	
2.0	.185	.144	.110	.158	.124	.095	.108	.086	.066	.062	.050	.039	.020	.016	.013	
3.0	.177	.126	.086	.152	.109	.075	.104	.076	.052	.060	.044	.031	.019	.014	.010	
4.0	.169	.113	.070	.145	.098	.061	.100	.068	.043	.058	.040	.025	.019	.013	.008	
5.0	.162	.103	.059	.139	.089	.052	.096	.062	.036	.055	.036	.022	.018	.012	.007	
6.0	.155	.094	.051	.133	.082	.045	.092	.057	.032	.053	.034	.019	.017	.011	.006	
7.0	.148	.088	.046	.127	.076	.040	.088	.053	.028	.051	.031	.017	.016	.010	.006	
8.0	.141	.082	.041	.122	.071	.036	.084	.050	.025	.049	.029	.015	.016	.010	.005	
9.0	.135	.077	.038	.116	.067	.033	.081	.047	.023	.047	.028	.014	.015	.009	.005	
10.0	.129	.073	.035	.112	.063	.030	.077	.044	.022	.045	.026	.013	.015	.009	.004	

C Range: 0 - 360DEG  
 C Interval: 30.0DEG  
 Test Speed: HIGH  
 Temperature:25.3DEG  
 Operators:LPC  
 Test Date:2021-12-22

γ Range: 0 - 120DEG  
 γ Interval: 1.0DEG  
 Test System:EVERFINE GO-2000B\_V1 SYSTEM V2.0.362  
 Humidity:65.0%  
 Test Distance:9.200m [K=1.0000]  
 Remarks:

UGR(Unified Glare Rating) Table

Test:U:48.00V I:0.2210A P:10.61W PF:1.000 Freq:50.00Hz Lamp Flux:294.45x1 lm											
NAME: SF15-48V-5050-60-2700-80						TYPE:硅胶			WEIGHT:		
SPEC.:						DIM.: 21mm*11.5mm			SERIAL No.:2021122212		
MFR.: OLYMPIA						SUR.:1*0.0115			Shielding Angle:		
ceiling/cavity	0.7	0.7	0.5	0.5	0.3	0.7	0.7	0.5	0.5	0.3	
walls	0.5	0.3	0.5	0.3	0.3	0.5	0.3	0.5	0.3	0.3	
working plane	0.2	0.2	0.2	0.2	0.2	0.2	0.2	0.2	0.2	0.2	
Room dimensions		Viewed crosswise					Viewed endwise				
x = 2H y = 2H	24.9	26.4	25.2	26.6	26.8	24.2	25.7	24.5	25.9	26.2	
	3H	26.6	28.0	26.9	28.3	28.5	25.6	27.0	25.9	27.2	27.5
	4H	27.4	28.7	27.7	29.0	29.3	26.1	27.4	26.4	27.7	28.0
	6H	28.1	29.3	28.4	29.6	29.9	26.4	27.6	26.7	27.9	28.2
	8H	28.3	29.5	28.7	29.8	30.2	26.4	27.6	26.8	27.9	28.3
	12H	28.6	29.7	28.9	30.1	30.4	26.4	27.6	26.8	27.9	28.2
4H	2H	25.5	26.8	25.8	27.1	27.4	25.0	26.3	25.3	26.6	26.9
	3H	27.5	28.6	27.8	28.9	29.3	26.6	27.8	27.0	28.1	28.4
	4H	28.4	29.4	28.8	29.8	30.2	27.3	28.3	27.7	28.7	29.1
	6H	29.2	30.1	29.6	30.5	30.9	27.7	28.7	28.1	29.0	29.4
	8H	29.5	30.4	30.0	30.8	31.2	27.8	28.7	28.3	29.1	29.5
	12H	29.9	30.7	30.3	31.1	31.5	27.9	28.7	28.3	29.1	29.5
8H	4H	28.7	29.6	29.1	30.0	30.4	27.7	28.6	28.2	29.0	29.4
	6H	29.7	30.4	30.2	30.9	31.3	28.4	29.1	28.9	29.6	30.0
	8H	30.2	30.8	30.7	31.3	31.8	28.6	29.3	29.1	29.7	30.2
	12H	30.6	31.2	31.1	31.7	32.2	28.8	29.3	29.3	29.8	30.3
12H	4H	28.7	29.5	29.2	29.9	30.4	27.8	28.6	28.3	29.0	29.5
	6H	29.8	30.4	30.3	30.9	31.4	28.6	29.2	29.0	29.7	30.1
	8H	30.3	30.9	30.8	31.4	31.9	28.9	29.4	29.4	29.9	30.4
Variations with the observer position at spacings:											
S = 1.0H	+ 0.1 / - 0.2					+ 0.2 / - 0.2					
1.5H	+ 0.2 / - 0.3					+ 0.2 / - 0.4					
2.0H	+ 0.1 / - 0.3					+ 0.2 / - 0.5					

CIE Pub.117, 294.4 lm Total Lamp Luminous Flux Correct (8log(F/F0) = -4.2)

C Range: 0 - 360DEG  
C Interval: 30.0DEG  
Test Speed: HIGH  
Temperature:25.3DEG  
Operators:LPC  
Test Date:2021-12-22

γ Range: 0 - 120DEG  
γ Interval: 1.0DEG  
Test System:EVERFINE GO-2000B\_V1 SYSTEM V2.0.362  
Humidity:65.0%  
Test Distance:9.200m [K=1.0000]  
Remarks:

### UTILIZATION FACTORS TABLE

Test:U:48.00V I:0.2210A P:10.61W PF:1.000 Freq:50.00Hz Lamp Flux:294.45x1 lm		
NAME: SF15-48V-5050-60-2700-80	TYPE:硅胶	WEIGHT:
SPEC.:	DIM.: 21mm*11.5mm	SERIAL No.:2021122212
MFR.: OLYMPIA	SUR.:1*0.0115	Shielding Angle:

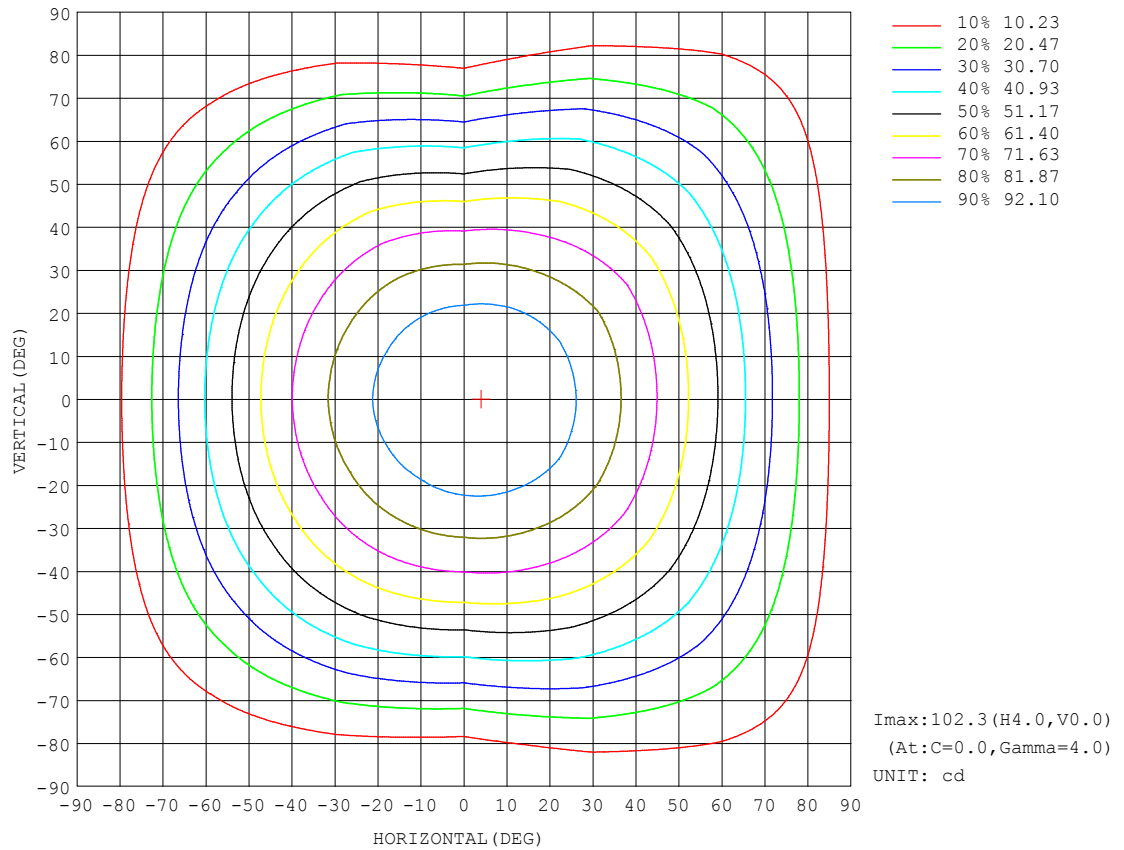
REFLECTANCE										
Ceiling	0.8	0.8	0.8	0.7	0.7	0.7	0.5	0.5	0.5	0
Walls	0.7	0.5	0.3	0.7	0.5	0.3	0.7	0.5	0.3	0
Working plane	0.2	0.2	0.2	0.2	0.2	0.2	0.2	0.2	0.2	0
ROOM INDEX	UTILIZATION FACTORS (PERCENT) $k(RI) \times RCR = 5$									
$k = 0.60$	57	45	38	56	45	38	55	44	38	32
0.80	67	55	48	66	55	48	64	54	47	40
1.00	75	64	57	74	63	56	72	65	56	49
1.25	82	72	64	81	71	64	78	69	63	56
1.50	87	77	70	86	76	70	82	74	68	61
2.00	94	85	79	92	84	78	89	82	76	68
2.50	98	90	84	96	89	83	92	86	81	72
3.00	101	94	89	99	93	88	95	90	85	76
4.00	106	100	95	103	98	93	99	94	91	81
5.00	108	103	99	105	101	97	101	97	94	84
ROOM INDEX	UF (total)									Direct
According to DIN EN 13032-2 2004			Suspended					SHRNOM = 1.25		

C Range: 0 - 360DEG  
C Interval: 30.0DEG  
Test Speed: HIGH  
Temperature:25.3DEG  
Operators:LPC  
Test Date:2021-12-22

$\gamma$  Range: 0 - 120DEG  
 $\gamma$  Interval: 1.0DEG  
Test System:EVERFINE GO-2000B\_V1 SYSTEM V2.0.362  
Humidity:65.0%  
Test Distance:9.200m [K=1.0000]  
Remarks:

## ISOCANDELA DIAGRAM

Test:U:48.00V I:0.2210A P:10.61W PF:1.000 Freq:50.00Hz Lamp Flux:294.45x1 lm		
NAME: SF15-48V-5050-60-2700-80	TYPE: 硅胶	WEIGHT:
SPEC.:	DIM.: 21mm*11.5mm	SERIAL No.:2021122212
MFR.: OLYMPIA	SUR.:1*0.0115	Shielding Angle:



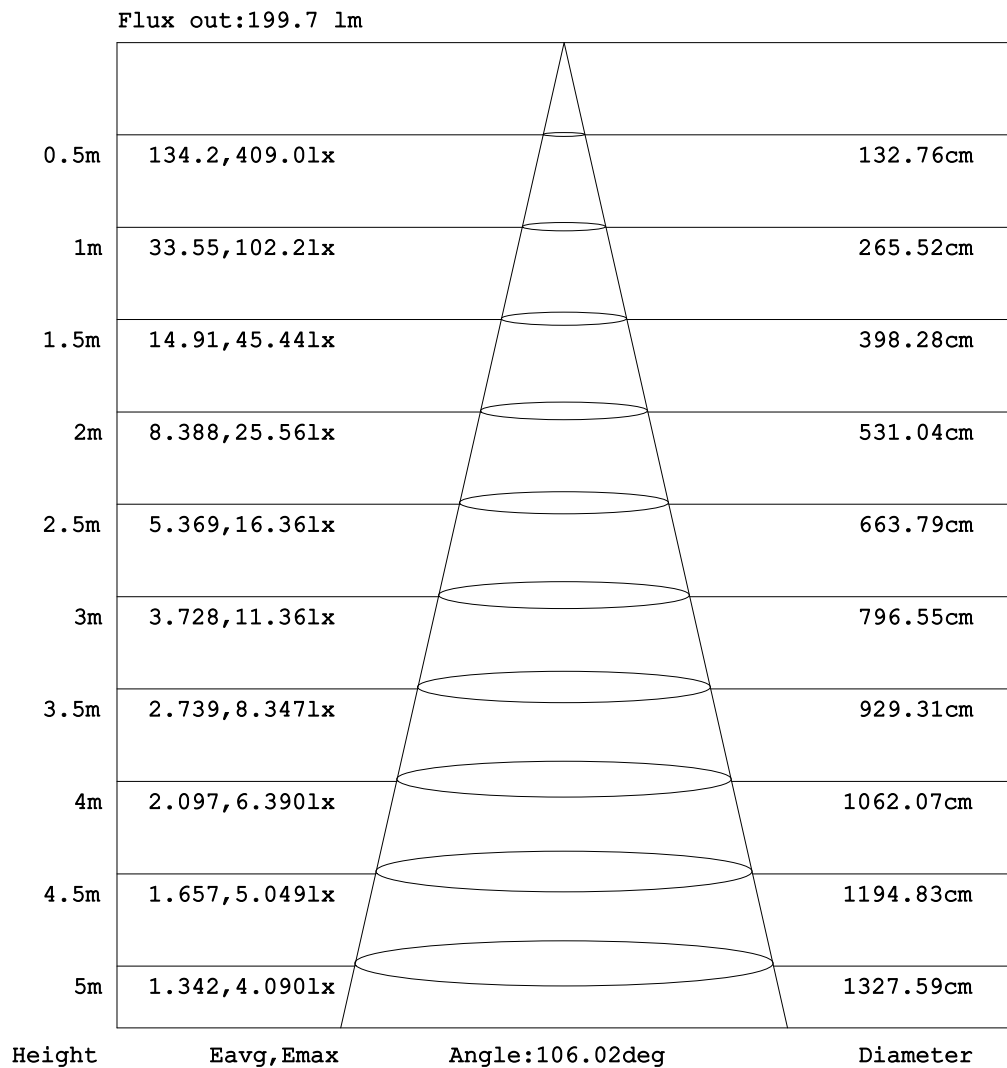
C Range: 0 - 360DEG  
C Interval: 30.0DEG  
Test Speed: HIGH  
Temperature:25.3DEG  
Operators:LPC  
Test Date:2021-12-22

$\gamma$  Range: 0 - 120DEG  
 $\gamma$  Interval: 1.0DEG  
Test System:EVERFINE GO-2000B\_V1 SYSTEM V2.0.362  
Humidity:65.0%  
Test Distance:9.200m [K=1.0000]  
Remarks:



## AAI Figure

Test:U:48.00V I:0.2210A P:10.61W PF:1.000 Freq:50.00Hz Lamp Flux:294.45x1 lm		
NAME: SF15-48V-5050-60-2700-80	TYPE: 硅胶	WEIGHT:
SPEC.:	DIM.: 21mm*11.5mm	SERIAL No.:2021122212
MFR.: OLYMPIA	SUR.:1*0.0115	Shielding Angle:



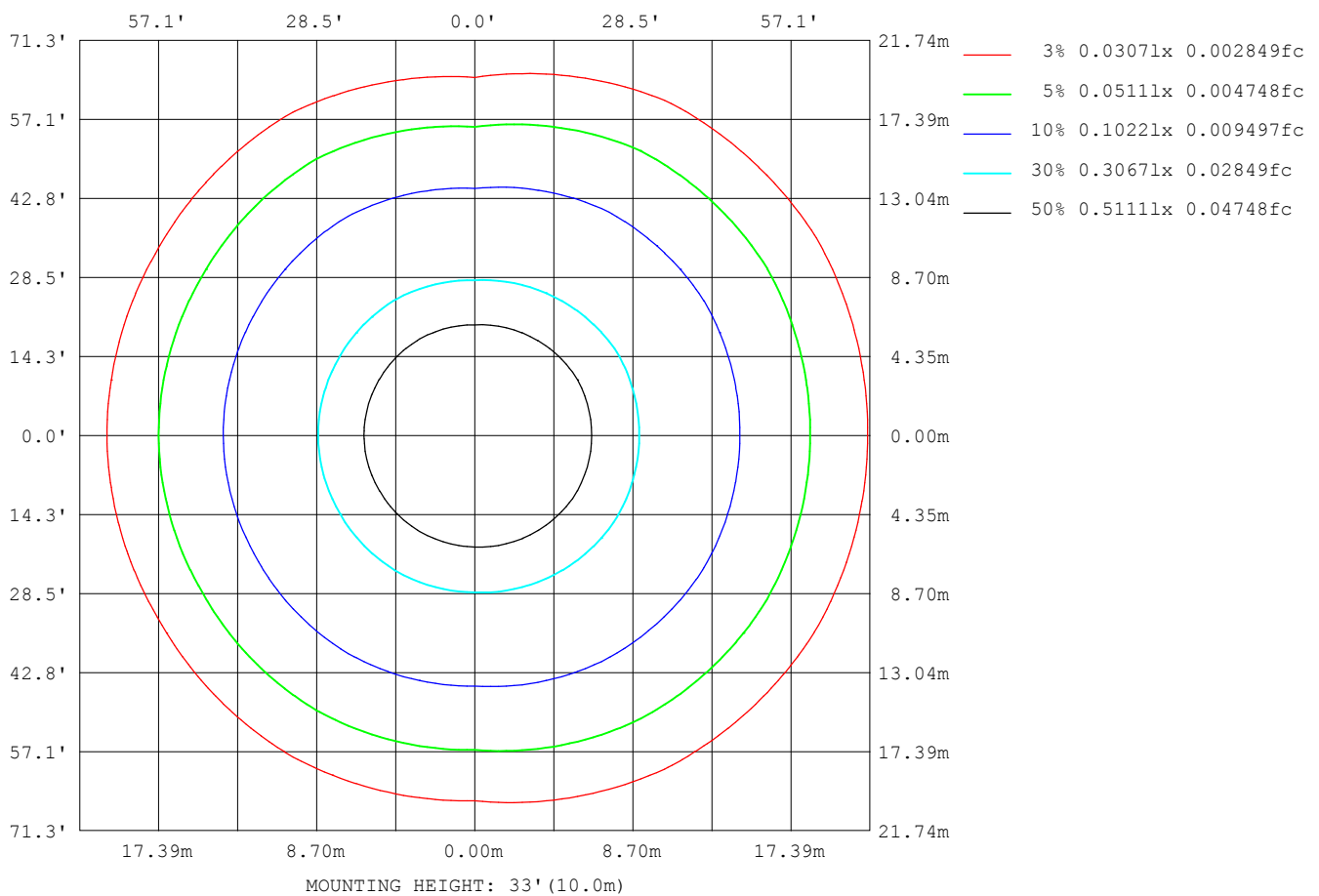
Note: The Curves indicate the illuminated area and the average illumination when the luminaire is at different distance.

C Range: 0 - 360DEG  
 C Interval: 30.0DEG  
 Test Speed: HIGH  
 Temperature: 25.3DEG  
 Operators: LPC  
 Test Date: 2021-12-22

γ Range: 0 - 120DEG  
 γ Interval: 1.0DEG  
 Test System: EVERFINE GO-2000B\_V1 SYSTEM V2.0.362  
 Humidity: 65.0%  
 Test Distance: 9.200m [K=1.0000]  
 Remarks:

## ISOLUX DIAGRAM

Test:U:48.00V I:0.2210A P:10.61W PF:1.000 Freq:50.00Hz Lamp Flux:294.45x1 lm		
NAME: SF15-48V-5050-60-2700-80	TYPE: 硅胶	WEIGHT:
SPEC.:	DIM.: 21mm*11.5mm	SERIAL No.:2021122212
MFR.: OLYMPIA	SUR.:1*0.0115	Shielding Angle:



C Range: 0 - 360DEG  
 C Interval: 30.0DEG  
 Test Speed: HIGH  
 Temperature:25.3DEG  
 Operators:LPC  
 Test Date:2021-12-22

$\gamma$  Range: 0 - 120DEG  
 $\gamma$  Interval: 1.0DEG  
 Test System:EVERFINE GO-2000B\_V1 SYSTEM V2.0.362  
 Humidity:65.0%  
 Test Distance:9.200m [K=1.0000]  
 Remarks:

## LED Avg.L Report

Test:U:48.00V I:0.2210A P:10.61W PF:1.000 Freq:50.00Hz Lamp Flux:294.45x1 lm		
NAME: SF15-48V-5050-60-2700-80	TYPE:硅胶	WEIGHT:
SPEC.:	DIM.: 21mm*11.5mm	SERIAL No.:2021122212
MFR.: OLYMPIA	SUR.:1*0.0115	Shielding Angle:

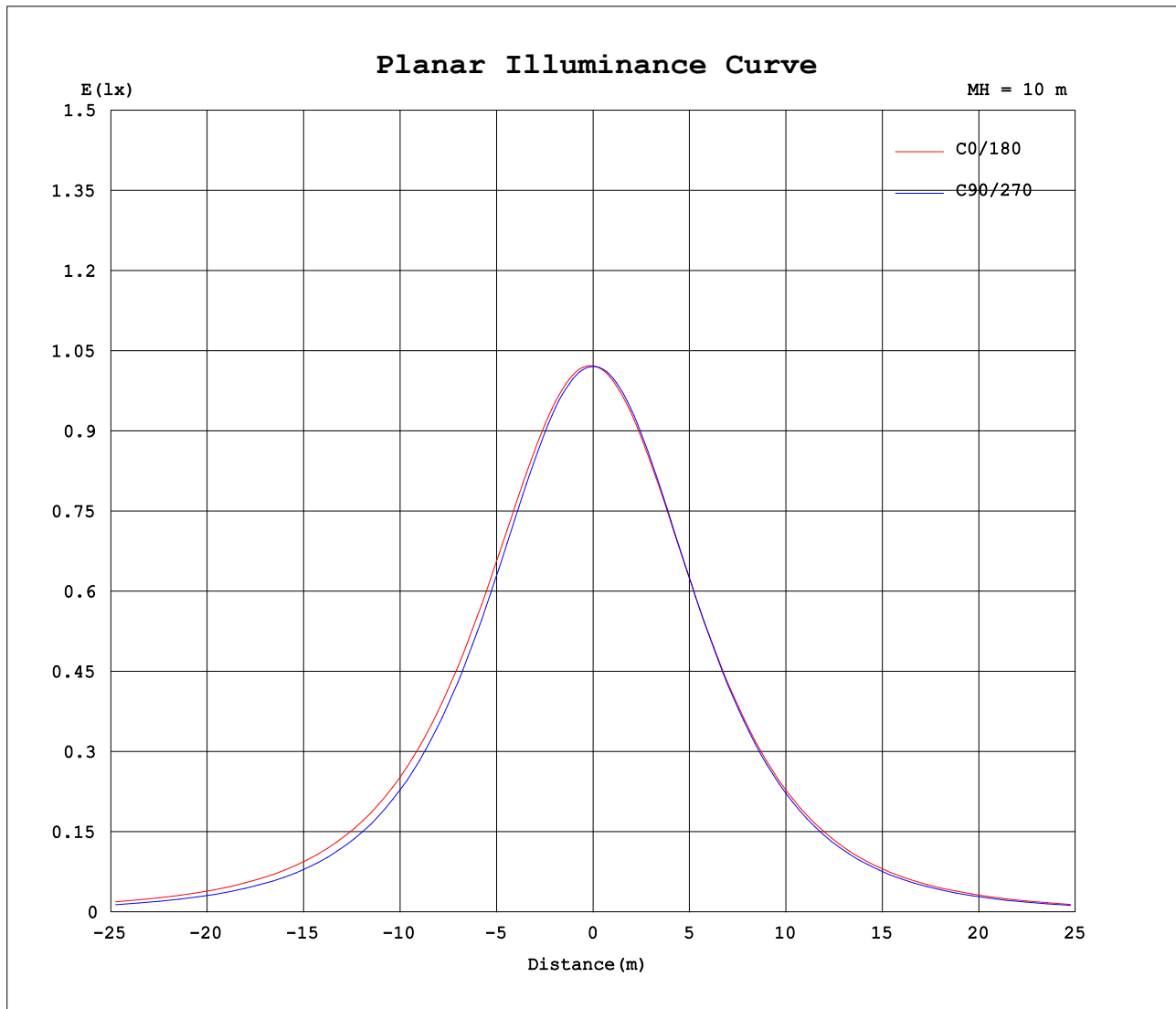
AvgL	cd/m2
L_0~180 (65) av	7697
L_0~180 (75) av	7060
L_0~180 (85) av	7459
L_90~270 (65) av	6378
L_90~270 (75) av	4806
L_90~270 (85) av	1589
L_45 (65) av	7652
L_45 (75) av	6982
L_45 (85) av	6798

Standard: GB/T 29293-2012

C Range: 0 - 360DEG  
C Interval: 30.0DEG  
Test Speed: HIGH  
Temperature:25.3DEG  
Operators:LPC  
Test Date:2021-12-22

γ Range: 0 - 120DEG  
γ Interval: 1.0DEG  
Test System:EVERFINE GO-2000B\_V1 SYSTEM V2.0.362  
Humidity:65.0%  
Test Distance:9.200m [K=1.0000]  
Remarks:

## Planar Illuminance Curve



C Range: 0 - 360DEG  
C Interval: 30.0DEG  
Test Speed: HIGH  
Temperature: 25.3DEG  
Operators: LPC  
Test Date: 2021-12-22

$\gamma$  Range: 0 - 120DEG  
 $\gamma$  Interval: 1.0DEG  
Test System: EVERFINE GO-2000B\_V1 SYSTEM V2.0.362  
Humidity: 65.0%  
Test Distance: 9.200m [K=1.0000]  
Remarks:

## LUMINOUS DISTRIBUTION INTENSITY DATA

Test:U:48.00V I:0.2210A P:10.61W PF:1.000 Freq:50.00Hz Lamp Flux:294.45x1 lm		
NAME: SF15-48V-5050-60-2700-80	TYPE: 硅胶	WEIGHT:
SPEC.:	DIM.: 21mm*11.5mm	SERIAL No.:2021122212
MFR.: OLYMPIA	SUR.:1*0.0115	Shielding Angle:

Table--1

UNIT: cd

C (DEG) γ (DEG)	0	30	60	90	120	150	180	210	240	270	300	330						
0	102	102	102	102	102	102	102	102	102	102	102	102						
5	102	102	102	102	101	101	101	101	101	102	102	102						
10	101	101	101	100	99.5	99.2	99.4	99.4	99.7	100	101	101						
15	99.4	99.4	98.5	97.6	96.7	96.4	96.7	96.6	96.9	97.5	98.7	99.6						
20	96.6	96.7	95.3	94.0	92.9	92.8	93.1	92.9	93.2	93.7	95.3	96.6						
25	93.0	92.9	91.2	89.5	88.5	88.3	88.8	88.6	88.9	89.0	91.1	92.9						
30	88.6	88.4	86.3	84.2	83.5	83.1	83.6	83.5	83.8	83.5	85.9	88.5						
35	83.6	83.3	80.7	78.3	77.8	77.3	77.9	77.8	78.2	77.2	80.2	83.6						
40	77.9	77.5	74.5	71.8	71.5	70.9	71.6	71.4	72.0	70.3	73.9	78.1						
45	71.5	71.2	68.1	64.7	64.8	64.0	64.7	64.6	65.2	62.9	67.7	71.8						
50	64.6	64.4	61.2	57.0	57.5	56.6	57.3	57.3	58.1	55.0	61.4	65.0						
55	57.4	57.1	54.0	49.0	49.9	48.9	49.5	49.4	50.5	46.7	54.5	57.8						
60	49.7	49.5	46.5	40.7	41.9	40.7	41.4	41.3	42.5	38.2	47.0	50.2						
65	41.7	41.6	38.6	32.3	33.6	32.5	33.1	32.9	34.2	29.7	39.2	42.3						
70	33.6	33.5	30.5	23.7	25.2	24.0	24.8	24.4	25.8	21.2	31.1	34.1						
75	25.3	25.3	22.4	15.4	17.1	16.1	16.7	16.2	17.4	13.2	23.0	25.9						
80	17.4	17.3	14.6	7.94	9.62	9.16	9.74	9.21	9.77	5.96	15.0	17.8						
85	10.2	9.96	7.68	2.20	4.09	4.43	4.75	4.21	3.98	0.98	7.77	10.4						
90	5.14	4.81	2.99	0.99	1.87	2.12	1.94	1.76	1.37	0.54	2.77	4.88						
95	2.44	2.23	1.64	1.06	1.73	1.78	1.24	1.34	1.20	0.57	1.29	2.08						
100	1.41	1.48	1.62	1.15	1.66	1.74	1.24	1.30	1.19	0.67	1.18	1.08						
105	1.37	1.53	1.51	1.26	1.58	1.79	1.23	1.29	1.05	0.86	1.00	1.11						
110	1.38	1.57	1.55	1.32	1.64	1.81	1.24	1.29	1.23	0.88	1.11	1.15						
115	1.43	1.61	1.73	1.38	1.75	1.81	0.79	1.31	1.32	0.92	1.18	1.19						
120	1.50	0.65	1.65	0.56	1.78	1.82	0.23	1.34	0.38	1.02	1.12	1.26						
125	0.00	0.00	0.00	0.00	0.00	0.00	0.00	0.00	0.00	0.00	0.00	0.00						
130	0.00	0.00	0.00	0.00	0.00	0.00	0.00	0.00	0.00	0.00	0.00	0.00						
135	0.00	0.00	0.00	0.00	0.00	0.00	0.00	0.00	0.00	0.00	0.00	0.00						
140	0.00	0.00	0.00	0.00	0.00	0.00	0.00	0.00	0.00	0.00	0.00	0.00						
145	0.00	0.00	0.00	0.00	0.00	0.00	0.00	0.00	0.00	0.00	0.00	0.00						
150	0.00	0.00	0.00	0.00	0.00	0.00	0.00	0.00	0.00	0.00	0.00	0.00						
155	0.00	0.00	0.00	0.00	0.00	0.00	0.00	0.00	0.00	0.00	0.00	0.00						
160	0.00	0.00	0.00	0.00	0.00	0.00	0.00	0.00	0.00	0.00	0.00	0.00						
165	0.00	0.00	0.00	0.00	0.00	0.00	0.00	0.00	0.00	0.00	0.00	0.00						
170	0.00	0.00	0.00	0.00	0.00	0.00	0.00	0.00	0.00	0.00	0.00	0.00						
175	0.00	0.00	0.00	0.00	0.00	0.00	0.00	0.00	0.00	0.00	0.00	0.00						
180	0.00	0.00	0.00	0.00	0.00	0.00	0.00	0.00	0.00	0.00	0.00	0.00						

C Range: 0 - 360DEG  
C Interval: 30.0DEG  
Test Speed: HIGH  
Temperature:25.3DEG  
Operators:LPC  
Test Date:2021-12-22

γ Range: 0 - 120DEG  
γ Interval: 1.0DEG  
Test System:EVERFINE GO-2000B\_V1 SYSTEM V2.0.362  
Humidity:65.0%  
Test Distance:9.200m [K=1.0000]  
Remarks:

## Photometric Data Table [cd]

G/C	0.0	30.0	60.0	90.0	120.0	150.0	180.0	210.0	240.0	270.0
0.0	102.2	102.2	102.1	102.1	102.1	102.1	102.2	102.2	102.1	102.1
3.0	102.3	102.3	102.1	101.9	101.7	101.6	101.8	101.7	101.8	102.0
6.0	102.1	102.0	101.8	101.4	101.0	100.8	101.0	100.9	101.1	101.5
9.0	101.5	101.5	101.1	100.6	99.91	99.63	99.86	99.82	100.1	100.6
12.0	100.6	100.6	100.1	99.27	98.51	98.19	98.44	98.37	98.72	99.25
15.0	99.38	99.38	98.55	97.58	96.68	96.37	96.69	96.62	96.94	97.49
18.0	97.83	97.85	96.70	95.58	94.54	94.25	94.63	94.59	94.81	95.35
21.0	95.95	96.05	94.51	93.16	92.13	91.98	92.32	92.09	92.42	92.84
24.0	93.78	93.73	92.02	90.52	89.46	89.25	89.70	89.55	89.78	89.98
27.0	91.36	91.21	89.26	87.53	86.60	86.27	86.75	86.55	86.85	86.92
30.0	88.63	88.44	86.29	84.24	83.52	83.15	83.64	83.50	83.77	83.49
33.0	85.68	85.38	82.98	80.83	80.16	79.69	80.26	80.18	80.48	79.79
36.0	82.49	82.14	79.47	77.10	76.61	76.06	76.66	76.52	76.95	75.90
39.0	79.03	78.72	75.80	73.14	72.84	72.28	72.87	72.76	73.25	71.72
42.0	75.36	75.05	71.99	69.04	68.88	68.26	68.85	68.80	69.33	67.36
45.0	71.51	71.19	68.08	64.72	64.77	64.02	64.66	64.58	65.25	62.91
48.0	67.45	67.19	64.01	60.16	60.47	59.71	60.30	60.20	61.01	58.22
51.0	63.23	62.95	59.80	55.47	56.02	55.14	55.79	55.64	56.59	53.35
54.0	58.87	58.59	55.49	50.53	51.43	50.44	51.11	51.12	52.01	48.43
57.0	54.35	54.11	51.07	45.71	46.70	45.68	46.34	46.04	47.34	43.36
60.0	49.73	49.47	46.53	40.73	41.88	40.74	41.44	41.28	42.48	38.16
63.0	45.00	44.74	41.87	35.53	36.95	35.75	36.44	36.27	37.53	33.12
66.0	40.11	39.98	37.00	30.61	31.98	30.80	31.44	31.11	32.54	28.01
69.0	35.23	35.10	32.22	25.38	26.92	25.71	26.39	26.24	27.47	22.94
72.0	30.30	30.19	27.35	20.29	21.96	20.77	21.44	21.18	22.39	17.98
75.0	25.33	25.34	22.37	15.44	17.08	16.09	16.70	16.25	17.44	13.17
78.0	20.47	20.42	17.87	10.85	12.44	11.68	12.34	11.99	12.73	8.638
81.0	15.83	15.70	13.17	6.561	8.310	8.006	8.583	8.056	8.404	4.740
84.0	11.52	11.34	8.967	3.131	4.947	5.204	5.594	5.051	4.890	1.678
87.0	7.872	7.530	5.425	1.235	2.781	3.218	3.352	2.986	2.503	0.6245
90.0	5.144	4.808	2.991	0.9851	1.866	2.124	1.942	1.757	1.371	0.5433
93.0	3.272	3.001	1.892	1.025	1.759	1.794	1.301	1.367	1.200	0.5428
96.0	2.124	1.958	1.635	1.071	1.715	1.774	1.244	1.322	1.195	0.6077
99.0	1.514	1.493	1.621	1.131	1.672	1.734	1.239	1.297	1.191	0.6280
102.0	1.367	1.503	1.607	1.222	1.628	1.759	1.235	1.294	1.186	0.7835
105.0	1.367	1.533	1.509	1.258	1.584	1.789	1.231	1.292	1.045	0.8594
108.0	1.367	1.558	1.487	1.294	1.538	1.803	1.236	1.289	1.126	0.8710
111.0	1.397	1.578	1.623	1.330	1.683	1.808	1.246	1.287	1.277	0.8827
114.0	1.421	1.598	1.714	1.362	1.739	1.813	0.9065	1.302	1.312	0.8944
117.0	1.442	1.634	1.734	1.407	1.754	1.819	0.5666	1.321	0.9442	0.9396
120.0	1.498	0.6534	1.653	0.5630	1.779	1.824	0.2266	1.342	0.3777	1.020
G/C	300.0	330.0								
0.0	102.1	102.1								
3.0	102.2	102.3								
6.0	101.9	102.2								
9.0	101.3	101.7								
12.0	100.1	100.8								
15.0	98.68	99.56								
18.0	96.77	98.02								
21.0	94.53	95.88								
24.0	92.01	93.69								
27.0	89.10	90.99								
30.0	85.94	88.46								
33.0	82.53	85.59								
36.0	78.94	82.60								
39.0	75.21	79.25								
42.0	71.39	75.61								
45.0	67.67	71.83								
48.0	63.93	67.80								
51.0	60.09	63.61								
54.0	55.96	59.31								
57.0	51.54	54.82								
60.0	46.98	50.15								
63.0	42.31	45.49								
66.0	37.57	40.68								
69.0	32.73	35.73								
72.0	27.86	30.90								
75.0	22.97	25.92								
78.0	18.15	21.00								
81.0	13.48	16.26								
84.0	9.111	11.78								
87.0	5.358	7.802								
90.0	2.774	4.883								

C Range: 0 - 360DEG  
 C Interval: 30.0DEG  
 Test Speed: HIGH  
 Temperature: 25.3DEG  
 Operators: LPC  
 Test Date: 2021-12-22

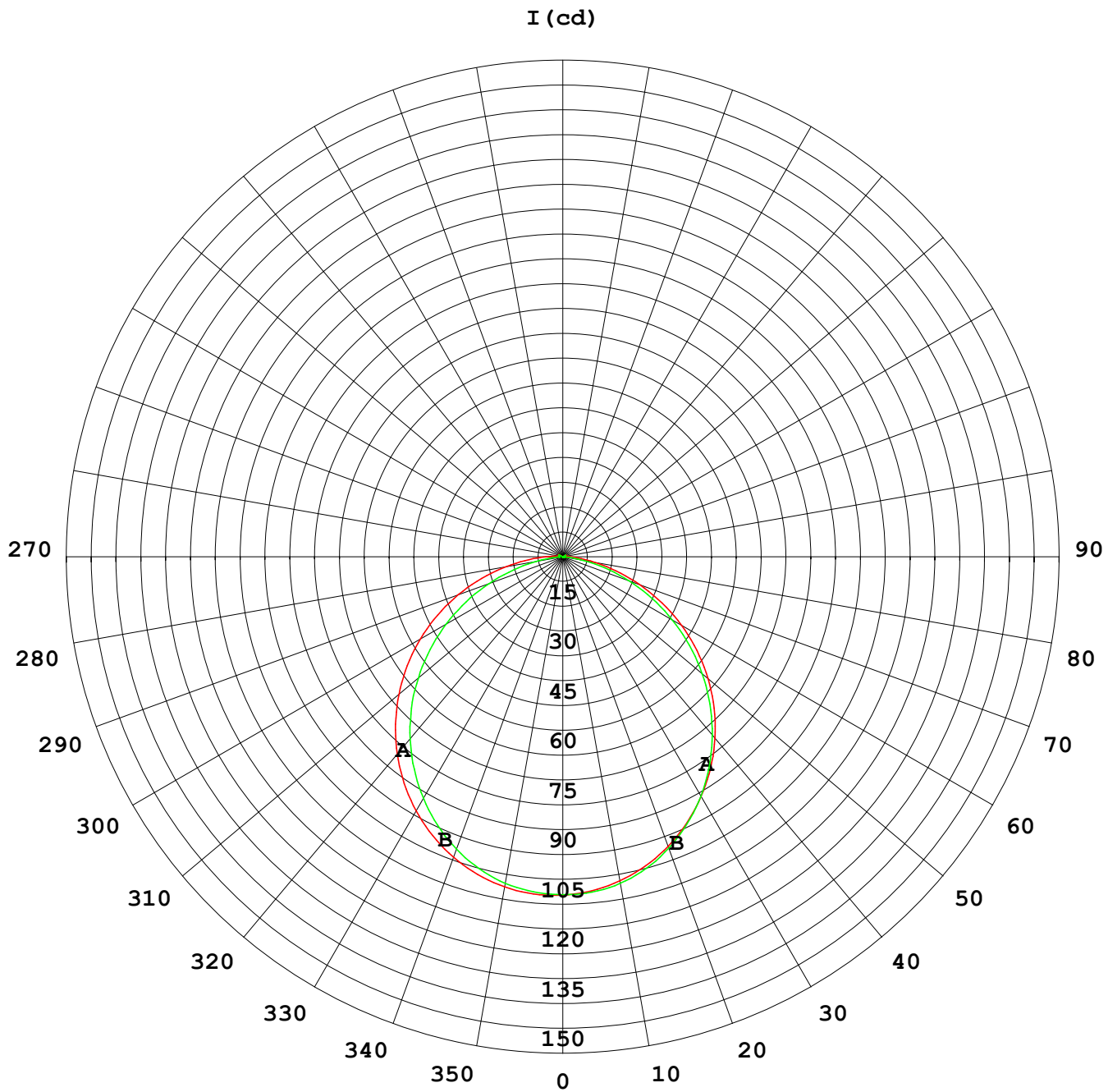
γ Range: 0 - 120DEG  
 γ Interval: 1.0DEG  
 Test System: EVERFINE GO-2000B\_V1 SYSTEM V2.0.362  
 Humidity: 65.0%  
 Test Distance: 9.200m [K=1.0000]  
 Remarks:

## Photometric Data Table [cd]

93.0	1.521	2.920
96.0	1.264	1.772
99.0	1.191	1.233
102.0	1.157	1.055
105.0	1.000	1.106
108.0	1.021	1.126
111.0	1.120	1.158
114.0	1.163	1.179
117.0	1.171	1.211
120.0	1.121	1.256

C Range: 0 - 360DEG  
C Interval: 30.0DEG  
Test Speed: HIGH  
Temperature: 25.3DEG  
Operators: LPC  
Test Date: 2021-12-22

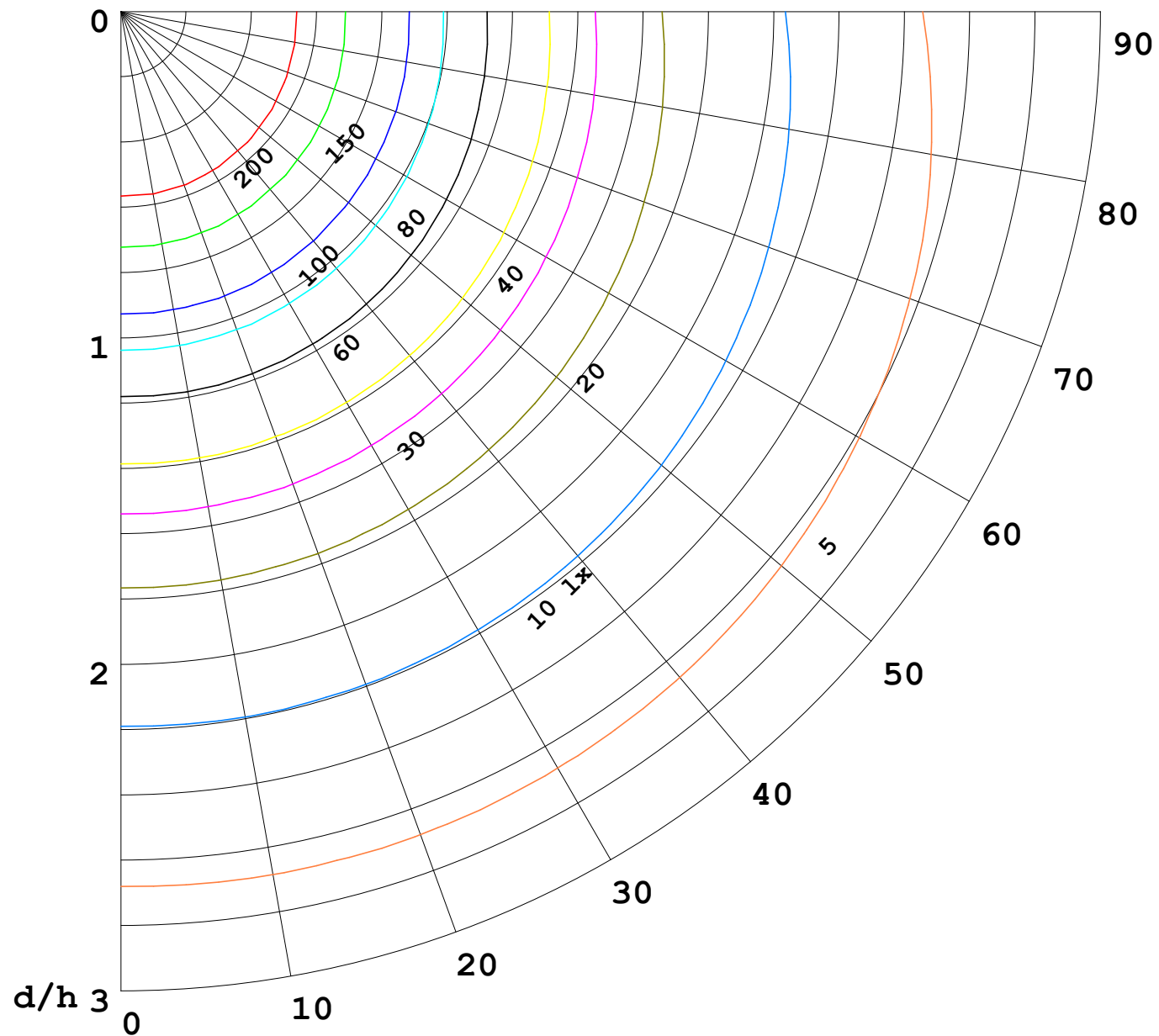
γ Range: 0 - 120DEG  
γ Interval: 1.0DEG  
Test System: EVERFINE GO-2000B\_V1 SYSTEM V2.0.362  
Humidity: 65.0%  
Test Distance: 9.200m [K=1.0000]  
Remarks:





1000 lm

$\kappa = 1$



F = 5000 lm  
 K = 0.7  
 Hcc = 0.0 m  
 Hfc = 0.0 m  
 Eave = 100 lx

	Pcc	Pw	Pfc
—	70	50	30
—	50	30	20

