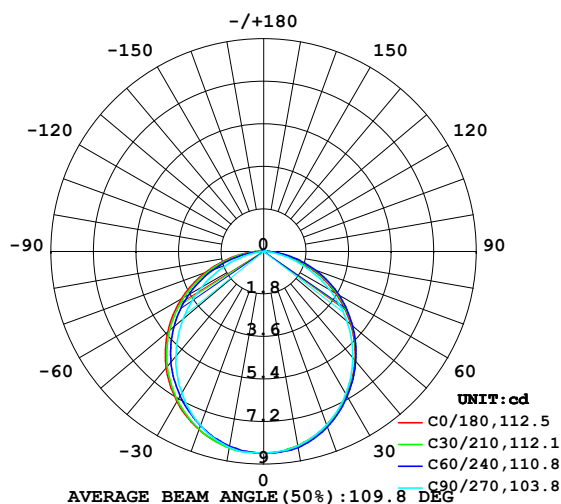


LUMINAIRE PHOTOMETRIC TEST REPORT

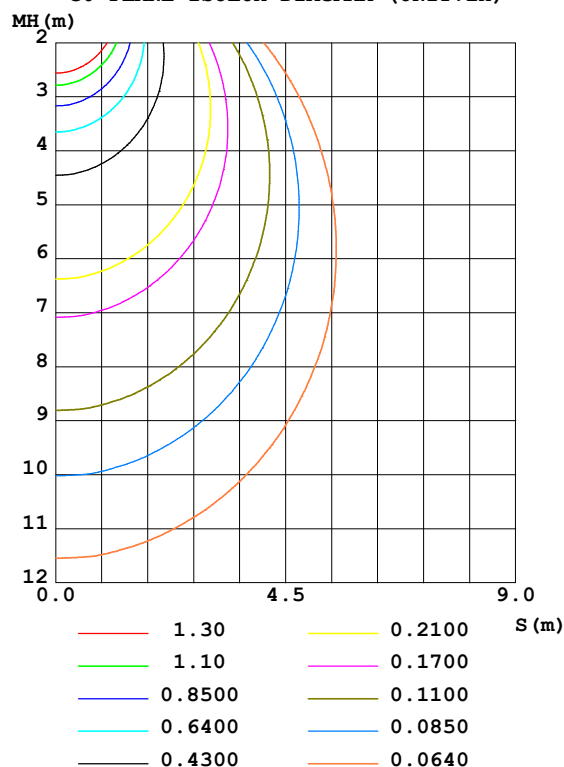
Test:U:48.00V I:0.2479A P:11.90W PF:1.000 Freq:50.00Hz Lamp Flux:24.0991x1 lm		
NAME: SF15-48V-5050-60-B	TYPE: 硅胶	WEIGHT:
SPEC.:	DIM.: 21mm*11.5mm	SERIAL No.:2021122301
MFR.: OLYMPIA	SUR.:1*0.0115	Shielding Angle:

DATA OF LAMP		PHOTOMETRIC DATA				Eff: 2.03 lm/W
MODEL	5050	I _{max} (cd)	8.559	S/MH (C0/180)	1.28	
NOMINAL POWER (W)	10	LOR (%)	100.0	S/MH (C90/270)	1.21	
RATED VOLTAGE (V)	48	TOTAL FLUX (lm)	24.099	η UP, DN (C0-180)	0.5, 48.5	
NOMINAL FLUX (lm)	24.0991	CIE CLASS	DIRECT	η UP, DN (C180-360)	0.4, 50.7	
LAMPS INSIDE	1	η up (%)	0.9	CIBSE SHR NOM	1.25	
TEST VOLTAGE (V)	48	η down (%)	99.1	CIBSE SHR MAX	1.35	

LUMINOUS INTENSITY DISTRIBUTION DIAGRAM



C0 PLANE ISOLUX DIAGRAM (UNIT:lx)



C Range: 0 - 360DEG
 C Interval: 30.0DEG
 Test Speed: HIGH
 Temperature: 25.3DEG
 Operators: LPC
 Test Date: 2021-12-23

γ Range: 0 - 120DEG
 γ Interval: 1.0DEG
 Test System: EVERFINE GO-2000B_V1 SYSTEM V2.0.362
 Humidity: 65.0%
 Test Distance: 9.200m [K=1.0000]
 Remarks:

ZONAL FLUX DIAGRAM

ZONAL FLUX DIAGRAM:

γ	C0	C45	C90	C135	C180	C225	C270	C315	γ	Φ zone	Φ total	%lum, lamp
10	8.348	8.380	8.347	8.350	8.413	8.408	8.418	8.446	0- 10	0.8083	0.8083	3.35,3.35
20	7.816	7.870	7.799	7.810	8.021	7.921	7.831	7.956	10- 20	2.306	3.115	12.9,12.9
30	7.017	7.061	6.955	7.026	7.347	7.179	6.927	7.177	20- 30	3.464	6.579	27.3,27.3
40	6.017	6.058	5.869	6.036	6.427	6.234	5.781	6.217	30- 40	4.141	10.72	44.5,44.5
50	4.821	4.900	4.602	4.860	5.296	5.081	4.459	5.141	40- 50	4.266	14.99	62.2,62.2
60	3.514	3.639	3.215	3.548	4.029	3.782	3.037	3.877	50- 60	3.832	18.82	78.1,78.1
70	2.127	2.292	1.813	2.151	2.642	2.390	1.655	2.523	60- 70	2.907	21.73	90.2,90.2
80	0.8505	0.9901	0.5818	0.8520	1.280	1.033	0.4231	1.178	70- 80	1.661	23.39	97,97
90	0.1762	0.1534	0.0352	0.1307	0.2859	0.1484	0	0.1961	80- 90	0.5046	23.89	99.1,99.1
100	0.0653	0.0779	0.0503	0.0896	0.0553	0.0503	0	0.0453	90-100	0.0867	23.98	99.5,99.5
110	0.0653	0.0678	0.0603	0.0754	0.0553	0.0603	0	0.0503	100-110	0.0609	24.04	99.8,99.8
120	0.0653	0.0553	0.0653	0.0754	0.0503	0.0603	0	0.0503	110-120	0.0576	24.10	100,100
130	0	0	0	0	0	0	0	0	120-130	0.0026	24.10	100,100
140	0	0	0	0	0	0	0	0	130-140	0	24.10	100,100
150	0	0	0	0	0	0	0	0	140-150	0	24.10	100,100
160	0	0	0	0	0	0	0	0	150-160	0	24.10	100,100
170	0	0	0	0	0	0	0	0	160-170	0	24.10	100,100
180	0	0	0	0	0	0	0	0	170-180	0	24.10	100,100
DEG	LUMINOUS INTENSITY:cd									UNIT:lm		

Conical surface Flux(90deg): 12.873 lm

%lum = 53.4%

%lamp = 53.4%

Conical surface Flux(120deg): 18.818 lm

%lum = 78.1%

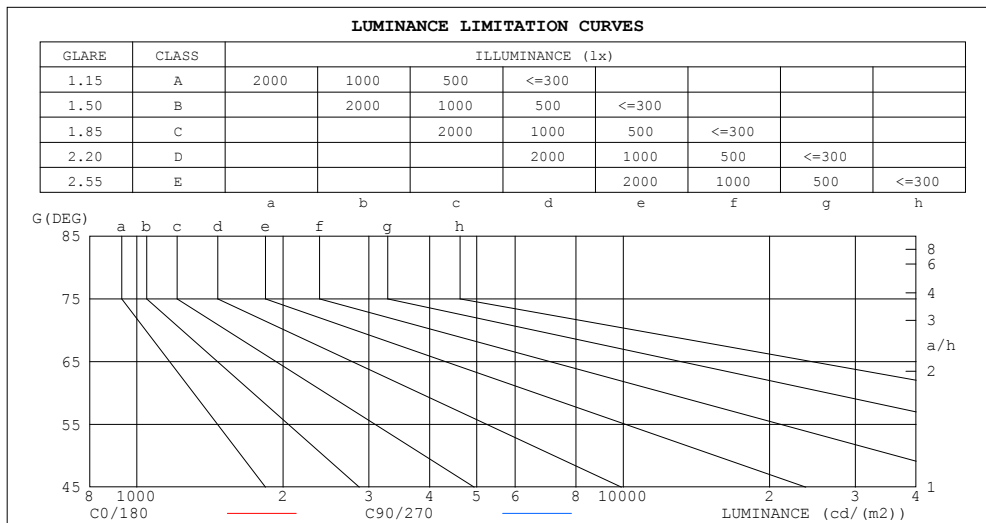
%lamp = 78.1%

C Range: 0 - 360DEG
 C Interval: 30.0DEG
 Test Speed: HIGH
 Temperature:25.3DEG
 Operators:LPC
 Test Date:2021-12-23

γ Range: 0 - 120DEG
 γ Interval: 1.0DEG
 Test System:EVERFINE GO-2000B_V1 SYSTEM V2.0.362
 Humidity:65.0%
 Test Distance:9.200m [K=1.0000]
 Remarks:

LUMINANCE LIMITATION CURVES

Test:U:48.00V I:0.2479A P:11.90W PF:1.000 Freq:50.00Hz Lamp Flux:24.0991x1 lm		
NAME: SF15-48V-5050-60-B	TYPE: 硅胶	WEIGHT:
SPEC.:	DIM.: 21mm*11.5mm	SERIAL No.:2021122301
MFR.: OLYMPIA	SUR.:1*0.0115	Shielding Angle:



LUMINANCE cd/(m2)		
G (DEG)	C0/180	C90/270
85	417	90
80	426	291
75	493	395
70	541	461
65	580	517
60	611	559
55	633	593
50	652	623
45	669	647

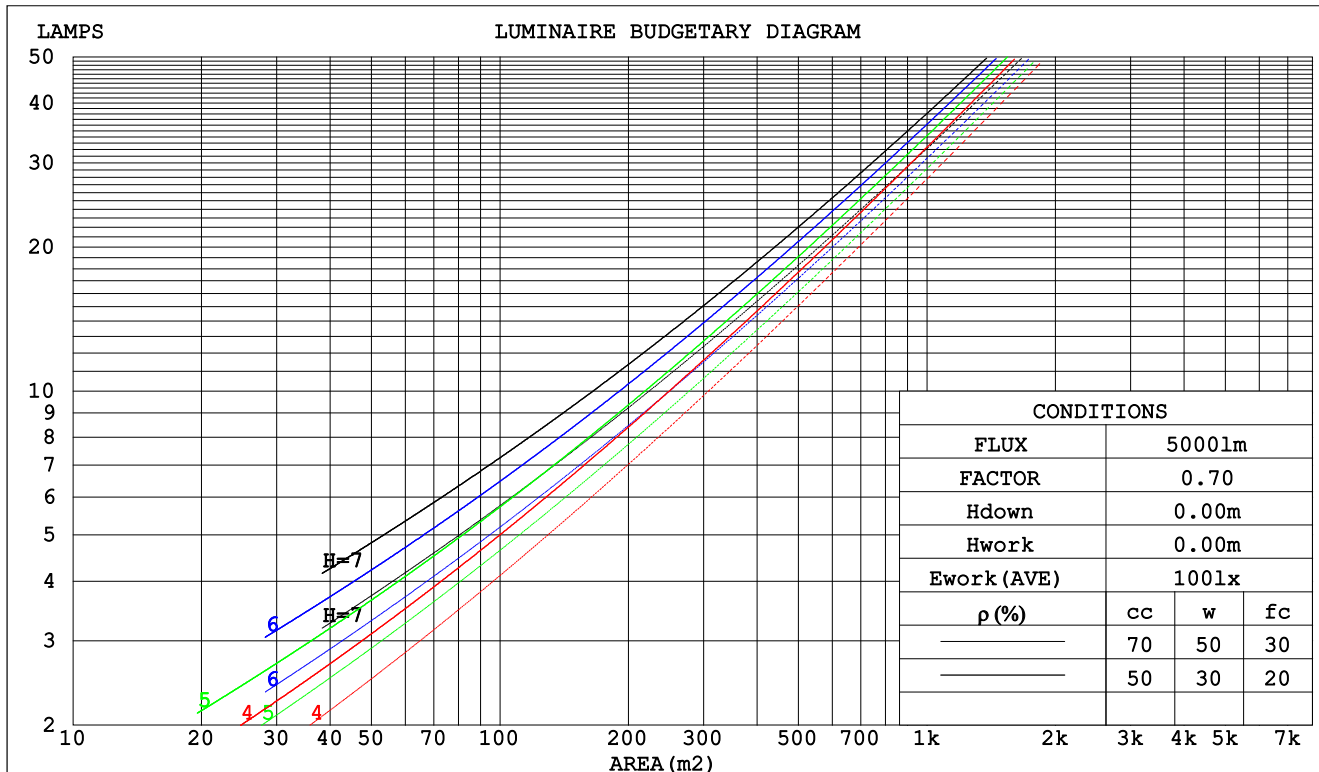
C Range: 0 - 360DEG
C Interval: 30.0DEG
Test Speed: HIGH
Temperature:25.3DEG
Operators:LPC
Test Date:2021-12-23

γ Range: 0 - 120DEG
 γ Interval: 1.0DEG
Test System:EVERFINE GO-2000B_V1 SYSTEM V2.0.362
Humidity:65.0%
Test Distance:9.200m [K=1.0000]
Remarks:

CU AND LUMINAIRE BUDGETARY ESTIMATE DIAGRAM

Test:U:48.00V I:0.2479A P:11.90W PF:1.000 Freq:50.00Hz Lamp Flux:24.0991x1 lm		
NAME: SF15-48V-5050-60-B	TYPE: 硅胶	WEIGHT:
SPEC.:	DIM.: 21mm*11.5mm	SERIAL No.:2021122301
MFR.: OLYMPIA	SUR.:1*0.0115	Shielding Angle:

pcc	80%			70%			50%			30%			10%			0
pw	50%	30%	10%	50%	30%	10%	50%	30%	10%	50%	30%	10%	50%	30%	10%	0
pfc	20%			20%			20%			20%			20%			0
RCR	RCR:Room Cavity Ratio						Coefficients of Utilization(CU)									
0.0	1.19	1.19	1.19	1.16	1.16	1.16	1.11	1.11	1.11	1.06	1.06	1.06	1.01	1.01	1.01	.99
1.0	1.04	.99	.95	1.01	.97	.94	.97	.94	.91	.93	.90	.88	.89	.87	.85	.83
2.0	.90	.83	.78	.88	.82	.77	.85	.79	.75	.81	.77	.73	.78	.74	.71	.69
3.0	.79	.71	.64	.78	.70	.64	.74	.68	.63	.72	.66	.61	.69	.64	.60	.58
4.0	.70	.61	.55	.69	.61	.54	.66	.59	.53	.64	.58	.53	.61	.56	.52	.49
5.0	.63	.54	.47	.62	.53	.47	.59	.52	.46	.57	.51	.46	.55	.50	.45	.43
6.0	.56	.47	.41	.55	.47	.41	.54	.46	.40	.52	.45	.40	.50	.44	.40	.37
7.0	.51	.42	.36	.50	.42	.36	.49	.41	.36	.47	.40	.35	.46	.40	.35	.33
8.0	.47	.38	.32	.46	.38	.32	.45	.37	.32	.43	.37	.32	.42	.36	.31	.30
9.0	.43	.35	.29	.42	.34	.29	.41	.34	.29	.40	.33	.29	.39	.33	.28	.27
10.0	.40	.32	.26	.39	.31	.26	.38	.31	.26	.37	.31	.26	.36	.30	.26	.24



C Range: 0 - 360DEG
 C Interval: 30.0DEG
 Test Speed: HIGH
 Temperature:25.3DEG
 Operators:LPC
 Test Date:2021-12-23

γ Range: 0 - 120DEG
 γ Interval: 1.0DEG
 Test System:EVERFINE GO-2000B_V1 SYSTEM V2.0.362
 Humidity:65.0%
 Test Distance:9.200m [K=1.0000]
 Remarks:

WEC AND CCEC

Test:U:48.00V I:0.2479A P:11.90W PF:1.000 Freq:50.00Hz Lamp Flux:24.0991x1 lm		
NAME: SF15-48V-5050-60-B	TYPE: 硅胶	WEIGHT:
SPEC.:	DIM.: 21mm*11.5mm	SERIAL No.:2021122301
MFR.: OLYMPIA	SUR.:1*0.0115	Shielding Angle:

pcc	80%			70%			50%			30%			10%			0	
pw	50%	30%	10%	50%	30%	10%	50%	30%	10%	50%	30%	10%	50%	30%	10%	0	
pfc	20%			20%			20%			20%			20%			0	
RCR	RCR:Room Cavity Ratio						Wall Exitance Coeffcients (WEC)										
0.0																	
1.0	.311	.177	.056	.303	.173	.055	.290	.166	.053	.277	.160	.051	.265	.154	.050		
2.0	.291	.160	.049	.285	.157	.048	.273	.152	.047	.262	.147	.046	.251	.142	.045		
3.0	.269	.143	.043	.264	.141	.043	.253	.137	.042	.243	.133	.041	.234	.129	.040		
4.0	.249	.129	.038	.243	.127	.038	.234	.124	.037	.225	.121	.036	.217	.118	.036		
5.0	.230	.117	.034	.225	.116	.034	.217	.113	.033	.209	.110	.033	.201	.108	.032		
6.0	.213	.107	.031	.209	.106	.030	.201	.103	.030	.194	.101	.030	.188	.099	.029		
7.0	.198	.098	.028	.195	.097	.028	.188	.095	.027	.182	.093	.027	.176	.091	.027		
8.0	.185	.090	.025	.182	.090	.025	.176	.088	.025	.170	.086	.025	.165	.085	.025		
9.0	.174	.084	.023	.171	.083	.023	.165	.082	.023	.160	.080	.023	.155	.079	.023		
10.0	.163	.078	.022	.161	.078	.022	.156	.076	.021	.151	.075	.021	.146	.074	.021		

pcc	80%			70%			50%			30%			10%			0
pw	50%	30%	10%	50%	30%	10%	50%	30%	10%	50%	30%	10%	50%	30%	10%	0
pfc	20%			20%			20%			20%			20%			0
RCR	RCR:Room Cavity Ratio						Ceiling Cavity Exitance Coefficients(CCEC)									
0.0	.197	.197	.197	.168	.168	.168	.115	.115	.115	.066	.066	.066	.021	.021	.021	
1.0	.187	.163	.141	.160	.140	.121	.109	.096	.084	.063	.056	.049	.020	.018	.016	
2.0	.179	.139	.105	.153	.119	.091	.105	.083	.063	.061	.048	.037	.019	.016	.012	
3.0	.171	.121	.081	.147	.104	.070	.101	.073	.049	.058	.042	.029	.019	.014	.010	
4.0	.163	.108	.065	.140	.093	.057	.096	.065	.040	.056	.038	.024	.018	.012	.008	
5.0	.156	.097	.054	.134	.084	.047	.092	.059	.033	.053	.035	.020	.017	.011	.006	
6.0	.149	.089	.046	.128	.077	.040	.088	.054	.028	.051	.032	.017	.017	.010	.006	
7.0	.142	.082	.040	.122	.071	.035	.084	.050	.025	.049	.029	.015	.016	.010	.005	
8.0	.136	.076	.036	.117	.066	.031	.081	.046	.022	.047	.027	.013	.015	.009	.004	
9.0	.129	.071	.032	.112	.062	.028	.077	.044	.020	.045	.026	.012	.015	.008	.004	
10.0	.124	.067	.029	.107	.058	.026	.074	.041	.018	.043	.024	.011	.014	.008	.004	

C Range: 0 - 360DEG
 C Interval: 30.0DEG
 Test Speed: HIGH
 Temperature:25.3DEG
 Operators:LPC
 Test Date:2021-12-23

γ Range: 0 - 120DEG
 γ Interval: 1.0DEG
 Test System:EVERFINE GO-2000B_V1 SYSTEM V2.0.362
 Humidity:65.0%
 Test Distance:9.200m [K=1.0000]
 Remarks:

UGR(Unified Glare Rating) Table

Test:U:48.00V I:0.2479A P:11.90W PF:1.000 Freq:50.00Hz Lamp Flux:24.0991x1 lm											
NAME: SF15-48V-5050-60-B						TYPE:硅胶		WEIGHT:			
SPEC.:						DIM.: 21mm*11.5mm		SERIAL No.:2021122301			
MFR.: OLYMPIA						SUR.:1*0.0115		Shielding Angle:			
ceiling/cavity	0.7	0.7	0.5	0.5	0.3	0.7	0.7	0.5	0.5	0.3	
walls	0.5	0.3	0.5	0.3	0.3	0.5	0.3	0.5	0.3	0.3	
working plane	0.2	0.2	0.2	0.2	0.2	0.2	0.2	0.2	0.2	0.2	
Room dimensions		Viewed crosswise					Viewed endwise				
x = 2H y = 2H	24.1	25.6	24.4	25.9	26.1	24.0	25.5	24.3	25.7	26.0	
	3H	25.6	27.0	25.9	27.2	27.5	25.3	26.7	25.6	27.0	27.2
	4H	26.1	27.5	26.5	27.7	28.0	25.8	27.1	26.1	27.4	27.7
	6H	26.5	27.8	26.9	28.0	28.3	26.0	27.3	26.4	27.6	27.9
	8H	26.6	27.8	27.0	28.1	28.4	26.1	27.3	26.4	27.6	27.9
	12H	26.7	27.9	27.1	28.2	28.5	26.0	27.2	26.4	27.5	27.8
4H	2H	24.8	26.1	25.1	26.4	26.6	24.7	26.0	25.0	26.3	26.5
	3H	26.4	27.6	26.8	27.9	28.2	26.3	27.4	26.6	27.7	28.1
	4H	27.1	28.2	27.5	28.5	28.8	26.9	28.0	27.3	28.3	28.6
	6H	27.6	28.5	28.0	28.9	29.3	27.3	28.2	27.7	28.6	29.0
	8H	27.7	28.6	28.2	29.0	29.4	27.4	28.2	27.8	28.6	29.0
	12H	27.9	28.7	28.3	29.1	29.5	27.4	28.2	27.8	28.6	29.0
8H	4H	27.4	28.3	27.8	28.6	29.1	27.2	28.1	27.7	28.5	28.9
	6H	28.0	28.8	28.5	29.2	29.6	27.8	28.6	28.3	29.0	29.4
	8H	28.3	28.9	28.7	29.4	29.8	28.0	28.7	28.5	29.1	29.6
	12H	28.5	29.0	29.0	29.5	30.0	28.1	28.6	28.6	29.1	29.6
12H	4H	27.4	28.2	27.8	28.6	29.0	27.2	28.0	27.7	28.4	28.9
	6H	28.1	28.7	28.6	29.2	29.7	27.9	28.5	28.4	29.0	29.5
	8H	28.4	28.9	28.9	29.4	29.9	28.1	28.7	28.6	29.2	29.7
Variations with the observer position at spacings:											
S = 1.0H	+ 0.2 / - 0.2					+ 0.2 / - 0.2					
1.5H	+ 0.2 / - 0.3					+ 0.2 / - 0.4					
2.0H	+ 0.2 / - 0.3					+ 0.2 / - 0.5					

CIE Pub.117, 24.10 lm Total Lamp Luminous Flux Correct (8log(F/F0) = -12.9)

C Range: 0 - 360DEG
C Interval: 30.0DEG
Test Speed: HIGH
Temperature:25.3DEG
Operators:LPC
Test Date:2021-12-23

γ Range: 0 - 120DEG
γ Interval: 1.0DEG
Test System:EVERFINE GO-2000B_V1 SYSTEM V2.0.362
Humidity:65.0%
Test Distance:9.200m [K=1.0000]
Remarks:

UTILIZATION FACTORS TABLE

Test:U:48.00V I:0.2479A P:11.90W PF:1.000 Freq:50.00Hz Lamp Flux:24.0991x1 lm		
NAME: SF15-48V-5050-60-B	TYPE: 硅胶	WEIGHT:
SPEC.:	DIM.: 21mm*11.5mm	SERIAL No.:2021122301
MFR.: OLYMPIA	SUR.:1*0.0115	Shielding Angle:

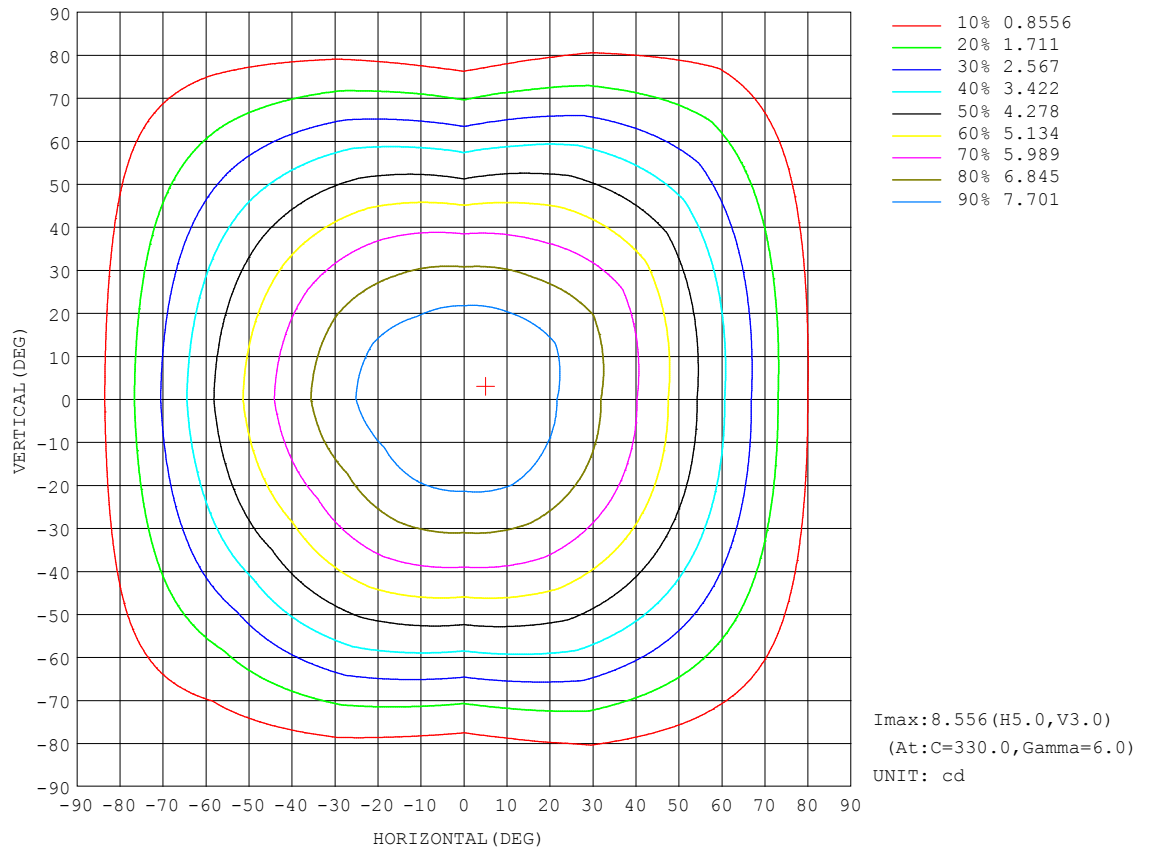
REFLECTANCE										
Ceiling	0.8	0.8	0.8	0.7	0.7	0.7	0.5	0.5	0.5	0
Walls	0.7	0.5	0.3	0.7	0.5	0.3	0.7	0.5	0.3	0
Working plane	0.2	0.2	0.2	0.2	0.2	0.2	0.2	0.2	0.2	0
ROOM INDEX	UTILIZATION FACTORS (PERCENT) $k(RI) \times RCR = 5$									
$k = 0.60$	57	46	39	57	46	39	55	45	39	32
0.80	67	56	48	66	55	48	65	55	48	41
1.00	76	65	57	75	64	57	72	65	56	49
1.25	83	72	65	81	72	65	79	70	64	57
1.50	88	78	71	86	77	70	83	75	69	62
2.00	95	86	80	93	85	79	89	82	77	69
2.50	99	91	85	96	89	84	93	87	82	73
3.00	102	95	89	100	93	88	96	90	86	77
4.00	106	100	95	103	98	94	99	95	91	82
5.00	108	103	99	106	101	98	101	98	95	85
ROOM INDEX	UF (total)									Direct
According to DIN EN 13032-2 2004			Suspended					SHRNOM = 1.25		

C Range: 0 - 360DEG
 C Interval: 30.0DEG
 Test Speed: HIGH
 Temperature: 25.3DEG
 Operators: LPC
 Test Date: 2021-12-23

γ Range: 0 - 120DEG
 γ Interval: 1.0DEG
 Test System: EVERFINE GO-2000B_V1 SYSTEM V2.0.362
 Humidity: 65.0%
 Test Distance: 9.200m [K=1.0000]
 Remarks:

ISOCANDELA DIAGRAM

Test:U:48.00V I:0.2479A P:11.90W PF:1.000 Freq:50.00Hz Lamp Flux:24.0991x1 lm		
NAME: SF15-48V-5050-60-B	TYPE: 硅胶	WEIGHT:
SPEC.:	DIM.: 21mm*11.5mm	SERIAL No.:2021122301
MFR.: OLYMPIA	SUR.:1*0.0115	Shielding Angle:

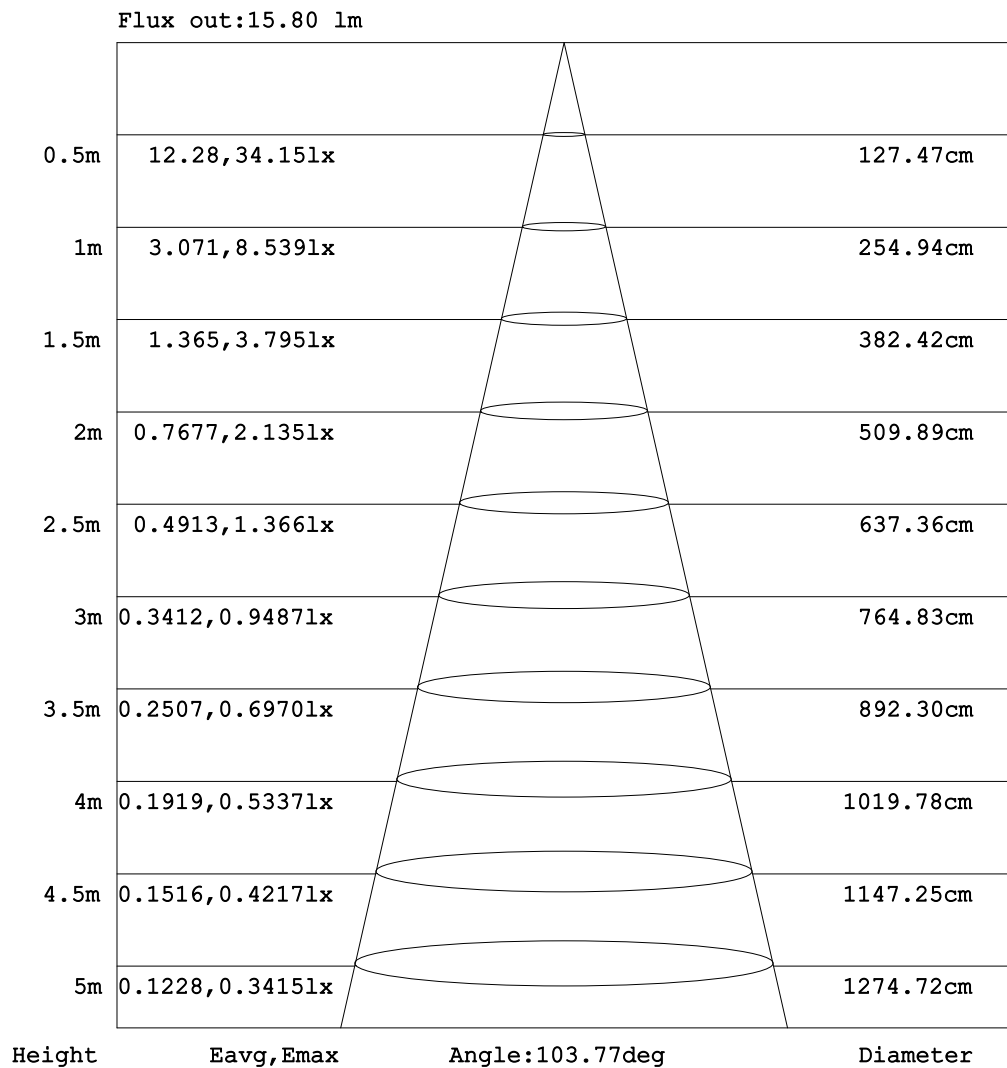


C Range: 0 - 360DEG
C Interval: 30.0DEG
Test Speed: HIGH
Temperature:25.3DEG
Operators:LPC
Test Date:2021-12-23

γ Range: 0 - 120DEG
 γ Interval: 1.0DEG
Test System:EVERFINE GO-2000B_V1 SYSTEM V2.0.362
Humidity:65.0%
Test Distance:9.200m [K=1.0000]
Remarks:

AAI Figure

Test:U:48.00V I:0.2479A P:11.90W PF:1.000 Freq:50.00Hz Lamp Flux:24.0991x1 lm		
NAME: SF15-48V-5050-60-B	TYPE: 硅胶	WEIGHT:
SPEC.:	DIM.: 21mm*11.5mm	SERIAL No.:2021122301
MFR.: OLYMPIA	SUR.:1*0.0115	Shielding Angle:



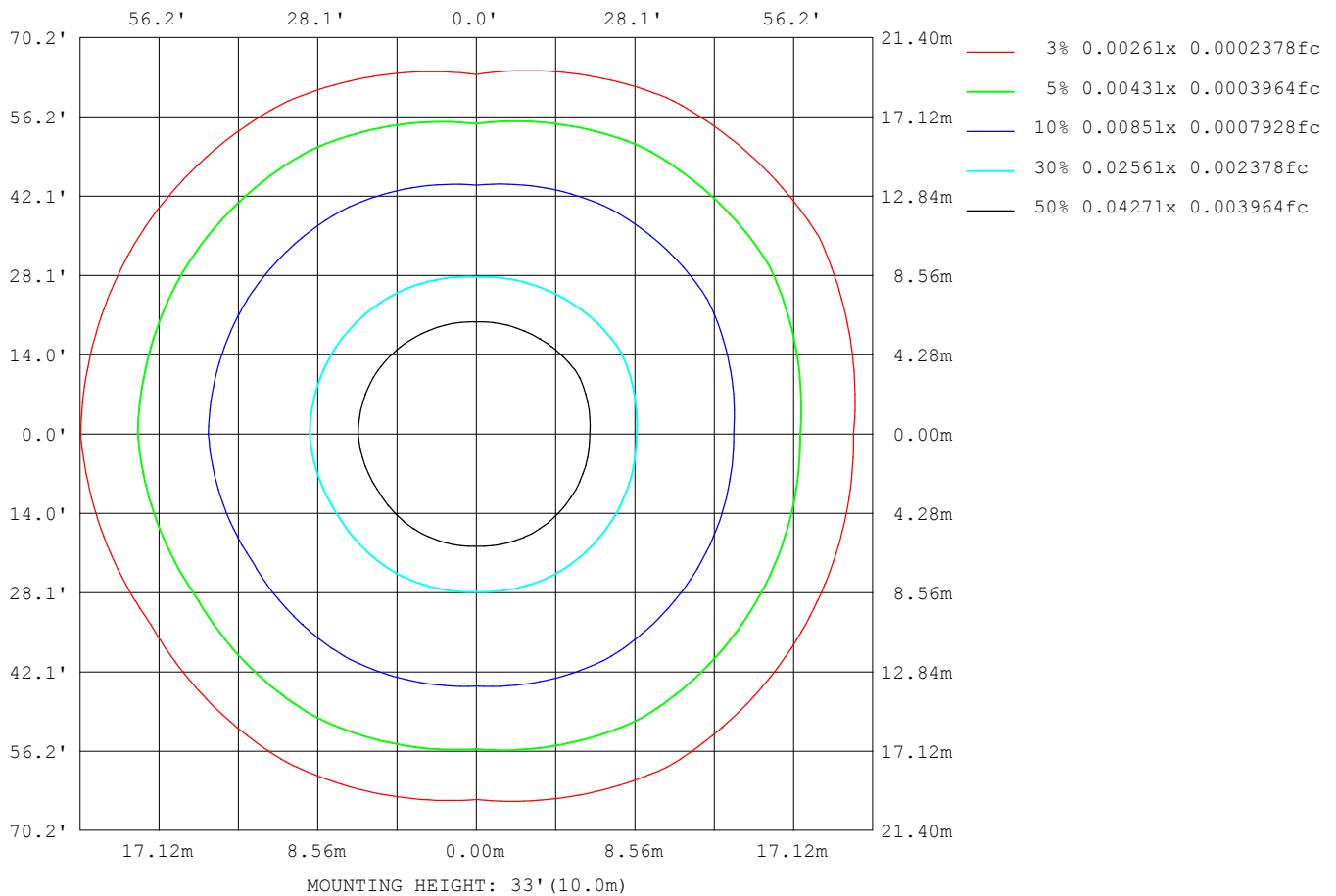
Note:The Curves indicate the illuminated area and the average illumination when the luminaire is at different distance.

C Range: 0 - 360DEG
 C Interval: 30.0DEG
 Test Speed: HIGH
 Temperature:25.3DEG
 Operators:LPC
 Test Date:2021-12-23

γ Range: 0 - 120DEG
 γ Interval: 1.0DEG
 Test System:EVERFINE GO-2000B_V1 SYSTEM V2.0.362
 Humidity:65.0%
 Test Distance:9.200m [K=1.0000]
 Remarks:

ISOLUX DIAGRAM

Test:U:48.00V I:0.2479A P:11.90W PF:1.000 Freq:50.00Hz Lamp Flux:24.0991x1 lm		
NAME: SF15-48V-5050-60-B	TYPE: 硅胶	WEIGHT:
SPEC.:	DIM.: 21mm*11.5mm	SERIAL No.:2021122301
MFR.: OLYMPIA	SUR.:1*0.0115	Shielding Angle:



C Range: 0 - 360DEG
C Interval: 30.0DEG
Test Speed: HIGH
Temperature:25.3DEG
Operators:LPC
Test Date:2021-12-23

γ Range: 0 - 120DEG
 γ Interval: 1.0DEG
Test System:EVERFINE GO-2000B_V1 SYSTEM V2.0.362
Humidity:65.0%
Test Distance:9.200m [K=1.0000]
Remarks:

LED Avg.L Report

Test:U:48.00V I:0.2479A P:11.90W PF:1.000 Freq:50.00Hz Lamp Flux:24.0991x1 lm		
NAME: SF15-48V-5050-60-B	TYPE:硅胶	WEIGHT:
SPEC.:	DIM.: 21mm*11.5mm	SERIAL No.:2021122301
MFR.: OLYMPIA	SUR.:1*0.0115	Shielding Angle:

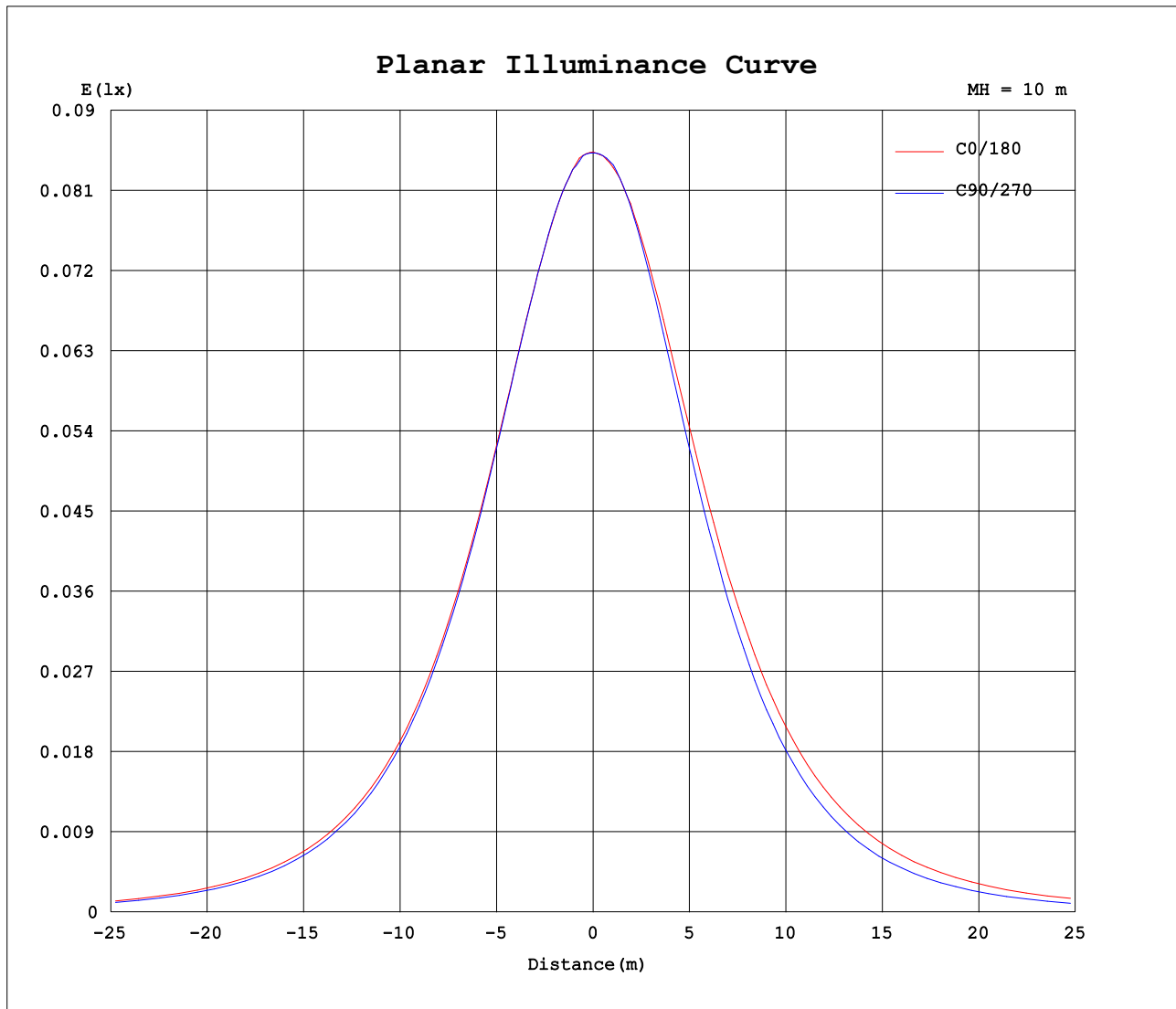
AvgL	cd/m2
L_0~180 (65) av	634
L_0~180 (75) av	573
L_0~180 (85) av	559
L_90~270 (65) av	499
L_90~270 (75) av	367
L_90~270 (85) av	65
L_45 (65) av	631
L_45 (75) av	566
L_45 (85) av	493

Standard: GB/T 29293-2012

C Range: 0 - 360DEG
C Interval: 30.0DEG
Test Speed: HIGH
Temperature:25.3DEG
Operators:LPC
Test Date:2021-12-23

γ Range: 0 - 120DEG
γ Interval: 1.0DEG
Test System:EVERFINE GO-2000B_V1 SYSTEM V2.0.362
Humidity:65.0%
Test Distance:9.200m [K=1.0000]
Remarks:

Planar Illuminance Curve



C Range: 0 - 360DEG
C Interval: 30.0DEG
Test Speed: HIGH
Temperature: 25.3DEG
Operators: LPC
Test Date: 2021-12-23

γ Range: 0 - 120DEG
 γ Interval: 1.0DEG
Test System: EVERFINE GO-2000B_V1 SYSTEM V2.0.362
Humidity: 65.0%
Test Distance: 9.200m [K=1.0000]
Remarks:

LUMINOUS DISTRIBUTION INTENSITY DATA

Test:U:48.00V I:0.2479A P:11.90W PF:1.000 Freq:50.00Hz Lamp Flux:24.0991x1 lm		
NAME: SF15-48V-5050-60-B	TYPE: 硅胶	WEIGHT:
SPEC.:	DIM.: 21mm*11.5mm	SERIAL No.:2021122301
MFR.: OLYMPIA	SUR.:1*0.0115	Shielding Angle:

Table--1

UNIT: cd

C (DEG) γ (DEG)	0	30	60	90	120	150	180	210	240	270	300	330						
0	8.53	8.52	8.53	8.52	8.54	8.52	8.53	8.52	8.53	8.52	8.54	8.52						
5	8.50	8.50	8.51	8.47	8.52	8.48	8.51	8.52	8.49	8.52	8.51	8.55						
10	8.35	8.33	8.43	8.35	8.38	8.32	8.41	8.45	8.37	8.42	8.41	8.48						
15	8.12	8.13	8.20	8.11	8.14	8.09	8.26	8.26	8.16	8.18	8.20	8.30						
20	7.82	7.84	7.90	7.80	7.83	7.79	8.02	8.00	7.84	7.83	7.89	8.02						
25	7.45	7.47	7.52	7.41	7.46	7.43	7.71	7.67	7.48	7.41	7.51	7.68						
30	7.02	7.05	7.07	6.95	7.03	7.02	7.35	7.29	7.07	6.93	7.05	7.31						
35	6.55	6.58	6.59	6.45	6.57	6.54	6.90	6.84	6.62	6.38	6.55	6.88						
40	6.02	6.06	6.06	5.87	6.05	6.02	6.43	6.35	6.11	5.78	6.03	6.40						
45	5.44	5.49	5.50	5.26	5.48	5.46	5.89	5.80	5.56	5.14	5.53	5.86						
50	4.82	4.88	4.92	4.60	4.87	4.85	5.30	5.20	4.96	4.46	5.01	5.27						
55	4.17	4.24	4.31	3.91	4.23	4.21	4.68	4.56	4.32	3.75	4.39	4.66						
60	3.51	3.60	3.68	3.22	3.57	3.52	4.03	3.90	3.67	3.04	3.75	4.00						
65	2.82	2.92	3.02	2.51	2.89	2.83	3.34	3.21	2.98	2.34	3.09	3.33						
70	2.13	2.24	2.35	1.81	2.19	2.11	2.64	2.50	2.28	1.65	2.41	2.63						
75	1.47	1.55	1.68	1.18	1.51	1.45	1.94	1.80	1.57	1.01	1.72	1.94						
80	0.85	0.92	1.06	0.58	0.87	0.83	1.28	1.15	0.92	0.42	1.07	1.28						
85	0.42	0.42	0.50	0.09	0.37	0.38	0.70	0.60	0.36	0.04	0.49	0.68						
90	0.18	0.14	0.17	0.04	0.14	0.12	0.29	0.24	0.06	0.00	0.11	0.28						
95	0.08	0.07	0.10	0.04	0.11	0.08	0.06	0.09	0.04	0.00	0.05	0.10						
100	0.07	0.07	0.09	0.05	0.10	0.08	0.06	0.06	0.04	0.00	0.04	0.05						
105	0.07	0.07	0.08	0.06	0.09	0.08	0.06	0.06	0.04	0.00	0.04	0.05						
110	0.07	0.07	0.07	0.06	0.08	0.08	0.06	0.06	0.06	0.00	0.05	0.05						
115	0.07	0.07	0.07	0.06	0.08	0.08	0.05	0.06	0.06	0.00	0.06	0.06						
120	0.07	0.07	0.05	0.07	0.08	0.08	0.05	0.06	0.06	0.00	0.05	0.06						
125	0.00	0.00	0.00	0.00	0.00	0.00	0.00	0.00	0.00	0.00	0.00	0.00						
130	0.00	0.00	0.00	0.00	0.00	0.00	0.00	0.00	0.00	0.00	0.00	0.00						
135	0.00	0.00	0.00	0.00	0.00	0.00	0.00	0.00	0.00	0.00	0.00	0.00						
140	0.00	0.00	0.00	0.00	0.00	0.00	0.00	0.00	0.00	0.00	0.00	0.00						
145	0.00	0.00	0.00	0.00	0.00	0.00	0.00	0.00	0.00	0.00	0.00	0.00						
150	0.00	0.00	0.00	0.00	0.00	0.00	0.00	0.00	0.00	0.00	0.00	0.00						
155	0.00	0.00	0.00	0.00	0.00	0.00	0.00	0.00	0.00	0.00	0.00	0.00						
160	0.00	0.00	0.00	0.00	0.00	0.00	0.00	0.00	0.00	0.00	0.00	0.00						
165	0.00	0.00	0.00	0.00	0.00	0.00	0.00	0.00	0.00	0.00	0.00	0.00						
170	0.00	0.00	0.00	0.00	0.00	0.00	0.00	0.00	0.00	0.00	0.00	0.00						
175	0.00	0.00	0.00	0.00	0.00	0.00	0.00	0.00	0.00	0.00	0.00	0.00						
180	0.00	0.00	0.00	0.00	0.00	0.00	0.00	0.00	0.00	0.00	0.00	0.00						

C Range: 0 - 360DEG
C Interval: 30.0DEG
Test Speed: HIGH
Temperature:25.3DEG
Operators:LPC
Test Date:2021-12-23

γ Range: 0 - 120DEG
γ Interval: 1.0DEG
Test System:EVERFINE GO-2000B_V1 SYSTEM V2.0.362
Humidity:65.0%
Test Distance:9.200m [K=1.0000]
Remarks:

Photometric Data Table [cd]

G/C	0.0	30.0	60.0	90.0	120.0	150.0	180.0	210.0	240.0	270.0
0.0	8.534	8.519	8.529	8.524	8.539	8.519	8.534	8.519	8.529	8.524
3.0	8.529	8.498	8.529	8.523	8.539	8.498	8.523	8.524	8.513	8.524
6.0	8.474	8.468	8.502	8.473	8.494	8.438	8.493	8.512	8.483	8.529
9.0	8.383	8.373	8.454	8.388	8.408	8.343	8.443	8.479	8.398	8.449
12.0	8.258	8.262	8.343	8.267	8.293	8.222	8.358	8.383	8.282	8.328
15.0	8.117	8.126	8.202	8.111	8.142	8.086	8.257	8.263	8.156	8.177
18.0	7.941	7.965	8.032	7.935	7.962	7.920	8.116	8.127	7.965	7.992
21.0	7.740	7.769	7.826	7.729	7.760	7.734	7.960	7.941	7.769	7.755
24.0	7.524	7.553	7.600	7.498	7.539	7.528	7.774	7.750	7.553	7.514
27.0	7.278	7.306	7.354	7.236	7.293	7.276	7.573	7.519	7.322	7.233
30.0	7.017	7.050	7.072	6.955	7.032	7.020	7.347	7.293	7.065	6.927
33.0	6.740	6.784	6.781	6.658	6.751	6.739	7.080	7.027	6.794	6.625
36.0	6.444	6.477	6.484	6.326	6.464	6.452	6.809	6.740	6.517	6.268
39.0	6.128	6.165	6.163	5.994	6.153	6.130	6.527	6.454	6.216	5.912
42.0	5.786	5.834	5.836	5.638	5.821	5.804	6.216	6.132	5.894	5.530
45.0	5.439	5.487	5.504	5.261	5.479	5.457	5.894	5.796	5.557	5.142
48.0	5.072	5.130	5.157	4.869	5.117	5.090	5.542	5.449	5.200	4.730
51.0	4.690	4.763	4.796	4.461	4.746	4.718	5.180	5.072	4.838	4.309
54.0	4.308	4.376	4.429	4.055	4.364	4.316	4.803	4.700	4.452	3.896
57.0	3.921	3.994	4.062	3.657	3.972	3.944	4.416	4.303	4.069	3.464
60.0	3.514	3.597	3.680	3.215	3.575	3.522	4.029	3.896	3.667	3.037
63.0	3.102	3.190	3.288	2.788	3.163	3.099	3.617	3.489	3.255	2.620
66.0	2.685	2.778	2.886	2.366	2.746	2.687	3.205	3.072	2.838	2.198
69.0	2.268	2.376	2.479	1.954	2.323	2.255	2.783	2.640	2.416	1.780
72.0	1.856	1.968	2.077	1.542	1.906	1.838	2.361	2.223	1.989	1.399
75.0	1.469	1.552	1.680	1.175	1.514	1.451	1.944	1.796	1.567	1.011
78.0	1.082	1.165	1.303	0.8030	1.117	1.064	1.532	1.393	1.175	0.6343
81.0	0.7448	0.8030	0.9310	0.4613	0.7550	0.7278	1.155	1.026	0.7878	0.3275
84.0	0.4834	0.5117	0.5993	0.1651	0.4534	0.4515	0.8079	0.6896	0.4563	0.0962
87.0	0.2921	0.2759	0.3275	0.0352	0.2469	0.2508	0.5169	0.4280	0.2055	0.0102
90.0	0.1762	0.1356	0.1713	0.0352	0.1409	0.1206	0.2859	0.2367	0.0602	0
93.0	0.1007	0.0704	0.1107	0.0402	0.1177	0.0754	0.1354	0.1259	0.0402	0
96.0	0.0705	0.0704	0.0955	0.0402	0.1104	0.0754	0.0553	0.0705	0.0402	0
99.0	0.0653	0.0704	0.0855	0.0453	0.1055	0.0754	0.0553	0.0654	0.0402	0
102.0	0.0653	0.0753	0.0854	0.0603	0.1006	0.0754	0.0553	0.0603	0.0402	0
105.0	0.0653	0.0653	0.0805	0.0603	0.0855	0.0754	0.0553	0.0603	0.0403	0
108.0	0.0653	0.0653	0.0704	0.0603	0.0804	0.0754	0.0553	0.0603	0.0553	0
111.0	0.0653	0.0653	0.0704	0.0603	0.0754	0.0754	0.0553	0.0603	0.0603	0
114.0	0.0653	0.0653	0.0704	0.0603	0.0754	0.0754	0.0503	0.0603	0.0603	0
117.0	0.0653	0.0653	0.0704	0.0603	0.0754	0.0754	0.0553	0.0603	0.0603	0
120.0	0.0653	0.0653	0.0452	0.0653	0.0754	0.0754	0.0503	0.0603	0.0603	0
G/C	300.0	330.0								
0.0	8.539	8.519								
3.0	8.524	8.554								
6.0	8.498	8.559								
9.0	8.433	8.504								
12.0	8.327	8.418								
15.0	8.197	8.303								
18.0	8.025	8.157								
21.0	7.834	7.956								
24.0	7.593	7.760								
27.0	7.327	7.529								
30.0	7.045	7.308								
33.0	6.749	7.067								
36.0	6.452	6.791								
39.0	6.135	6.504								
42.0	5.834	6.193								
45.0	5.527	5.861								
48.0	5.221	5.514								
51.0	4.879	5.153								
54.0	4.507	4.781								
57.0	4.130	4.399								
60.0	3.753	4.002								
63.0	3.356	3.605								
66.0	2.964	3.193								
69.0	2.547	2.775								
72.0	2.134	2.359								
75.0	1.723	1.941								
78.0	1.336	1.539								
81.0	0.9536	1.152								
84.0	0.6067	0.7802								
87.0	0.2908	0.4934								
90.0	0.1102	0.2819								

C Range: 0 - 360DEG
 C Interval: 30.0DEG
 Test Speed: HIGH
 Temperature: 25.3DEG
 Operators: LPC
 Test Date: 2021-12-23

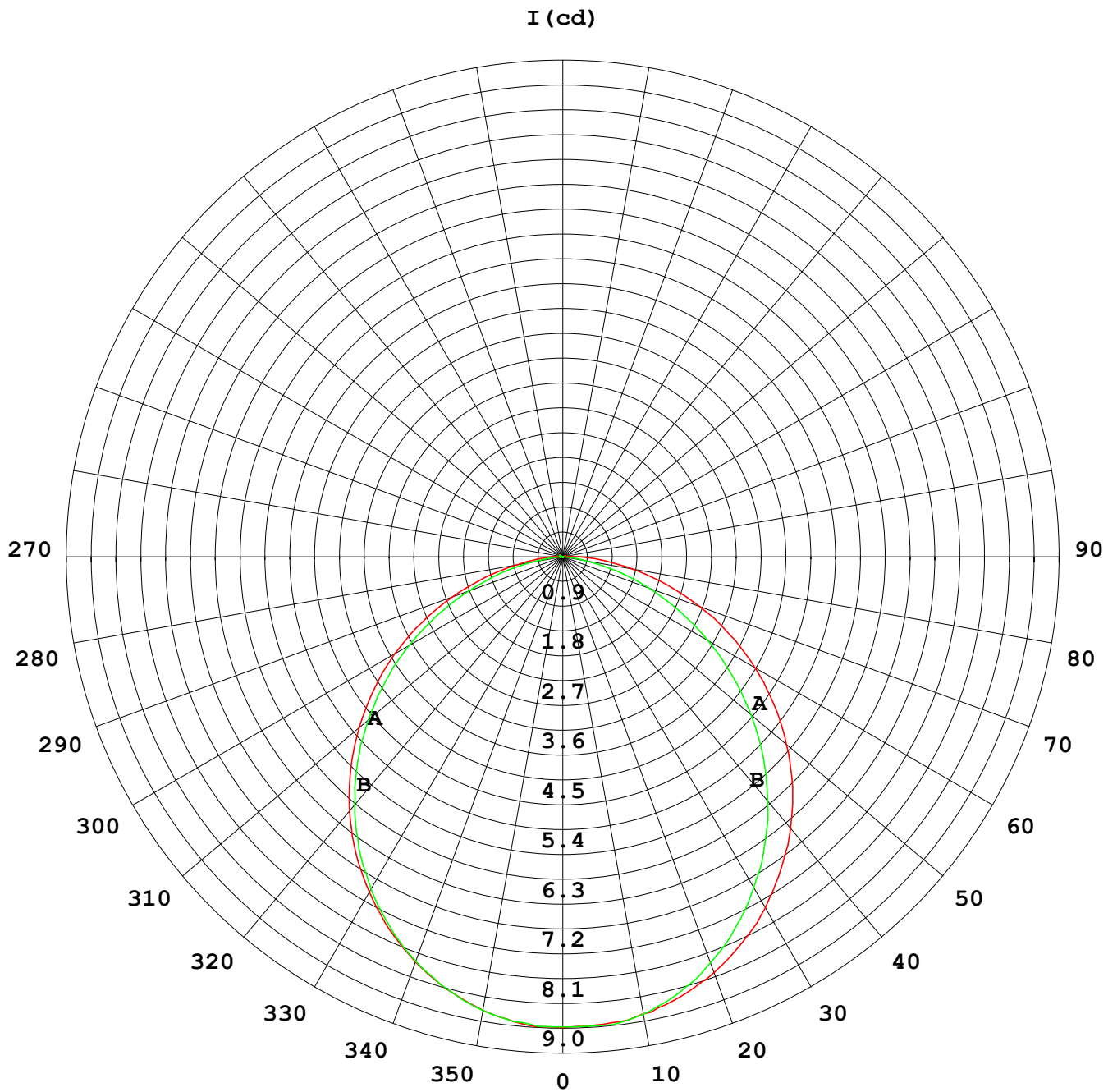
γ Range: 0 - 120DEG
 γ Interval: 1.0DEG
 Test System: EVERFINE GO-2000B_V1 SYSTEM V2.0.362
 Humidity: 65.0%
 Test Distance: 9.200m [K=1.0000]
 Remarks:

Photometric Data Table [cd]

93.0	0.0452	0.1611
96.0	0.0402	0.0856
99.0	0.0402	0.0603
102.0	0.0402	0.0503
105.0	0.0402	0.0503
108.0	0.0503	0.0503
111.0	0.0503	0.0503
114.0	0.0603	0.0553
117.0	0.0553	0.0553
120.0	0.0452	0.0553

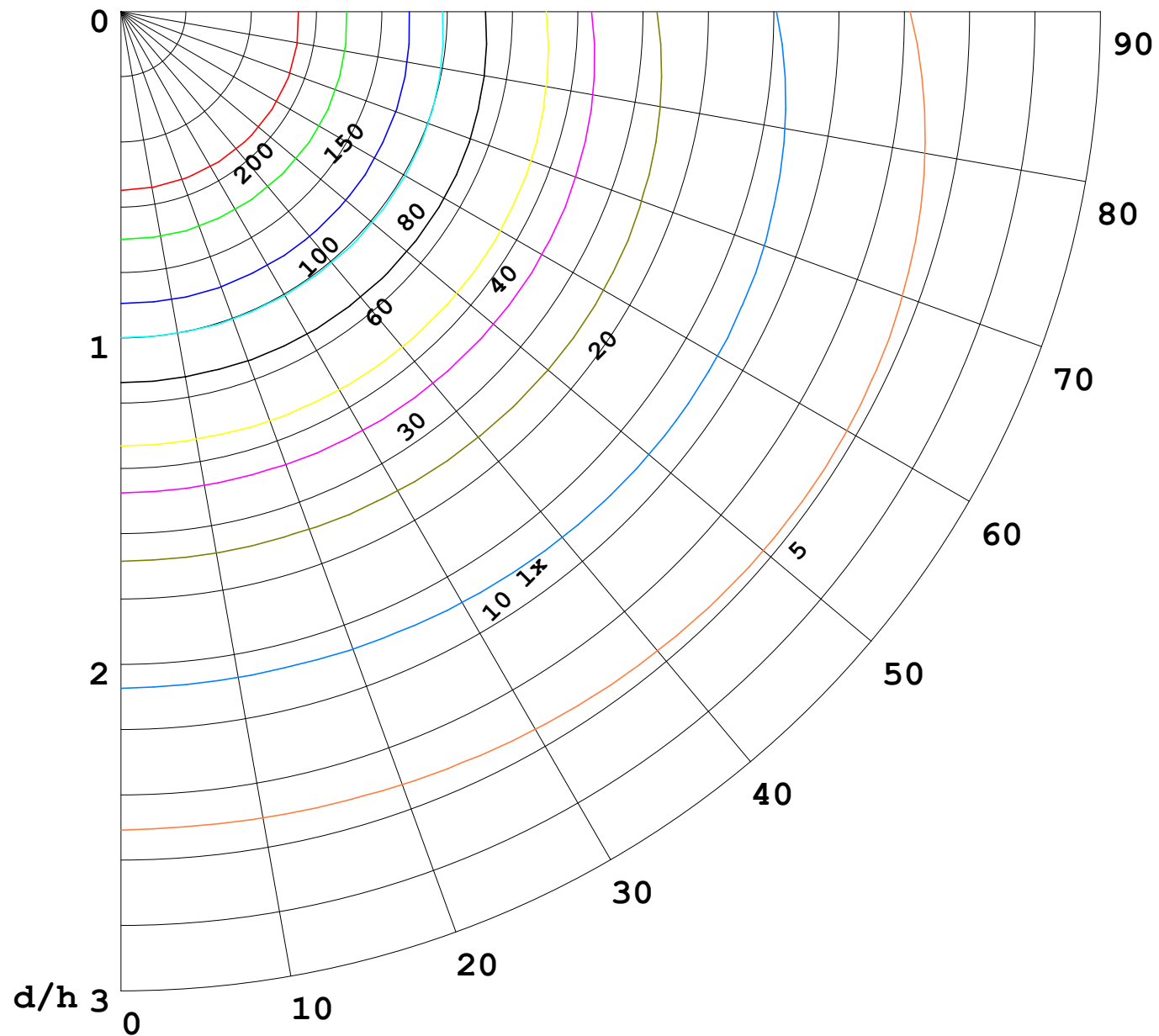
C Range: 0 - 360DEG
C Interval: 30.0DEG
Test Speed: HIGH
Temperature: 25.3DEG
Operators: LPC
Test Date: 2021-12-23

γ Range: 0 - 120DEG
γ Interval: 1.0DEG
Test System: EVERFINE GO-2000B_V1 SYSTEM V2.0.362
Humidity: 65.0%
Test Distance: 9.200m [K=1.0000]
Remarks:



1000 lm

$\kappa = 1$



F = 5000 lm
 K = 0.7
 Hcc = 0.0 m
 Hfc = 0.0 m
 Eave = 100 lx

	Pcc	Pw	Pfc
—	70	50	30
—	50	30	20

