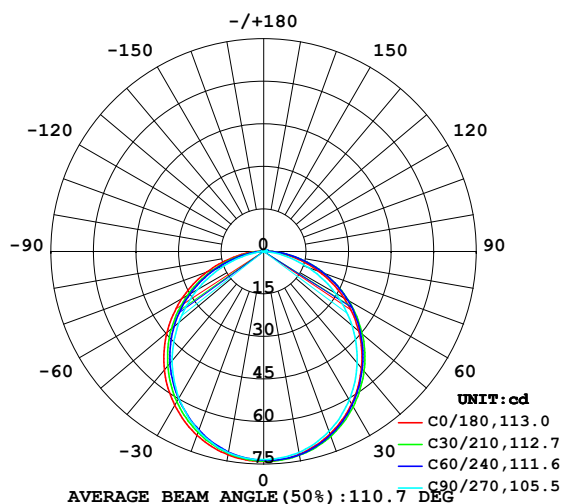


LUMINAIRE PHOTOMETRIC TEST REPORT

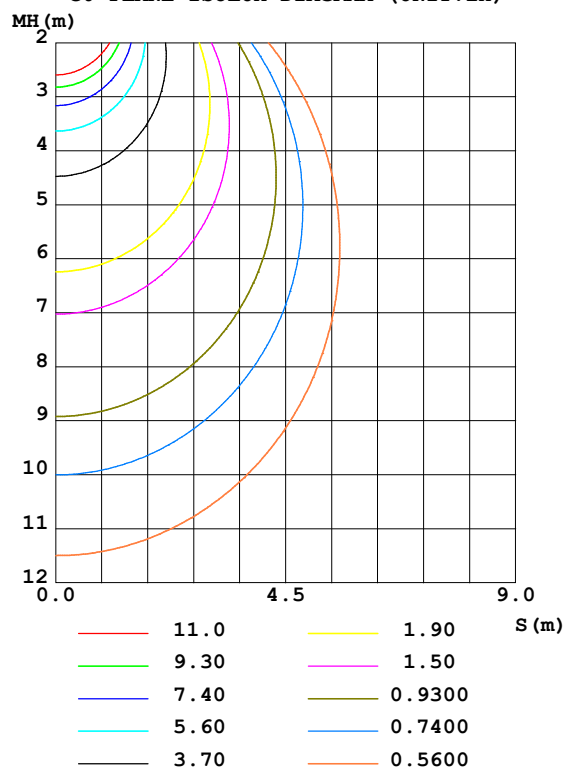
Test:U:48.00V I:0.2050A P:9.840W PF:1.000 Freq:50.00Hz Lamp Flux:211.756x1 lm		
NAME: SF15-48V-5050-60-G	TYPE: 硅胶	WEIGHT:
SPEC.:	DIM.: 21mm*11.5mm	SERIAL No.:2021122302
MFR.: OLYMPIA	SUR.:1*0.0115	Shielding Angle:

DATA OF LAMP		PHOTOMETRIC DATA Eff: 21.52 lm/W			
MODEL	5050	I _{max} (cd)	74.01	S/MH (C0/180)	1.26
NOMINAL POWER (W)	10	LOR (%)	100.0	S/MH (C90/270)	1.22
RATED VOLTAGE (V)	48	TOTAL FLUX (lm)	211.76	η UP, DN (C0-180)	0.8, 48.2
NOMINAL FLUX (lm)	211.756	CIE CLASS	DIRECT	η UP, DN (C180-360)	0.7, 50.3
LAMPS INSIDE	1	η up (%)	1.5	CIBSE SHR NOM	1.25
TEST VOLTAGE (V)	48	η down (%)	98.5	CIBSE SHR MAX	1.35

LUMINOUS INTENSITY DISTRIBUTION DIAGRAM



C0 PLANE ISOLUX DIAGRAM (UNIT:lx)



C Range: 0 - 360DEG
 C Interval: 30.0DEG
 Test Speed: HIGH
 Temperature: 25.3DEG
 Operators: LPC
 Test Date: 2021-12-23

γ Range: 0 - 120DEG
 γ Interval: 1.0DEG
 Test System: EVERFINE GO-2000B_V1 SYSTEM V2.0.362
 Humidity: 65.0%
 Test Distance: 9.200m [K=1.0000]
 Remarks:

ZONAL FLUX DIAGRAM

ZONAL FLUX DIAGRAM:

γ	C0	C45	C90	C135	C180	C225	C270	C315	γ	Φ zone	Φ total	%lum, lamp
10	72.58	72.85	71.94	70.73	72.76	72.02	72.04	73.10	0- 10	6.960	6.960	3.29,3.29
20	68.47	69.14	67.45	65.61	68.92	67.40	67.24	69.78	10- 20	19.87	26.83	12.7,12.7
30	62.07	62.81	60.43	58.31	62.71	60.60	59.86	63.93	20- 30	29.92	56.75	26.8,26.8
40	53.69	54.56	51.27	49.26	54.49	52.04	50.25	56.31	30- 40	35.84	92.59	43.7,43.7
50	43.77	45.01	40.65	38.87	44.54	41.91	39.08	47.49	40- 50	37.04	129.6	61.2,61.2
60	32.67	34.38	29.00	27.40	33.35	30.56	27.10	37.05	50- 60	33.44	163.1	77,77
70	20.87	22.82	16.81	15.48	21.38	18.48	14.89	25.69	60- 70	25.58	188.7	89.1,89.1
80	9.419	11.28	5.730	5.208	9.820	7.111	3.928	13.89	70- 80	14.90	203.6	96.1,96.1
90	2.336	2.654	0.6785	1.314	2.343	1.172	0.3605	3.803	80- 90	5.104	208.7	98.5,98.5
100	0.9358	1.127	0.7993	1.216	0.7606	0.8528	0.4422	0.8176	90-100	1.334	210.0	99.2,99.2
110	0.9749	1.138	0.9198	0.9628	0.4149	0.8730	0.6198	0.7566	100-110	0.9302	210.9	99.6,99.6
120	1.035	0.7131	1.005	0.1684	0.0691	0.6257	0.6936	0.8016	110-120	0.7976	211.7	100,100
130	0	0	0	0	0	0	0	0	120-130	0.0322	211.8	100,100
140	0	0	0	0	0	0	0	0	130-140	0	211.8	100,100
150	0	0	0	0	0	0	0	0	140-150	0	211.8	100,100
160	0	0	0	0	0	0	0	0	150-160	0	211.8	100,100
170	0	0	0	0	0	0	0	0	160-170	0	211.8	100,100
180	0	0	0	0	0	0	0	0	170-180	0	211.8	100,100
DEG	LUMINOUS INTENSITY:cd									UNIT:lm		

Conical surface Flux(90deg): 111.27 lm

%lum = 52.5%

%lamp = 52.5%

Conical surface Flux(120deg): 163.08 lm

%lum = 77.0%

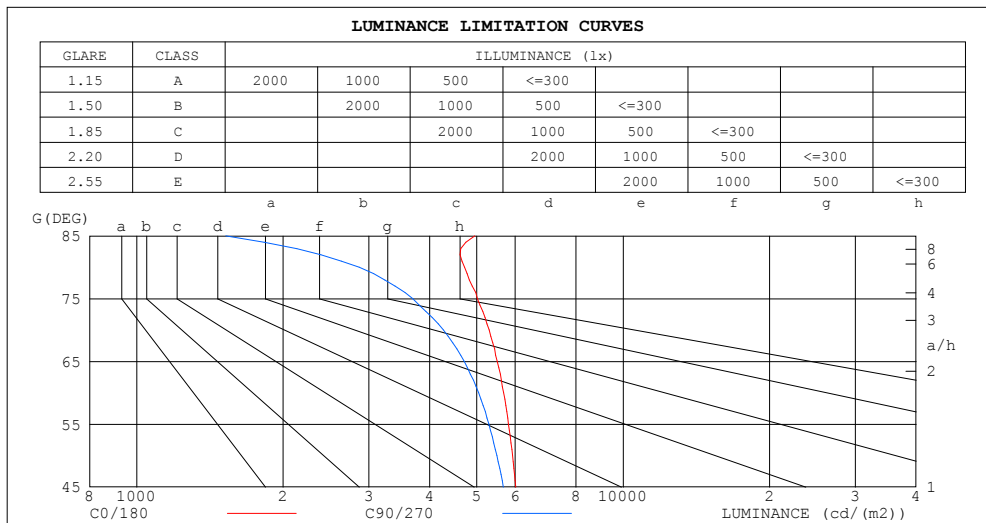
%lamp = 77.0%

C Range: 0 - 360DEG
 C Interval: 30.0DEG
 Test Speed: HIGH
 Temperature:25.3DEG
 Operators:LPC
 Test Date:2021-12-23

γ Range: 0 - 120DEG
 γ Interval: 1.0DEG
 Test System:EVERFINE GO-2000B_V1 SYSTEM V2.0.362
 Humidity:65.0%
 Test Distance:9.200m [K=1.0000]
 Remarks:

LUMINANCE LIMITATION CURVES

Test:U:48.00V I:0.2050A P:9.840W PF:1.000 Freq:50.00Hz Lamp Flux:211.756x1 lm		
NAME: SF15-48V-5050-60-G	TYPE: 硅胶	WEIGHT:
SPEC.:	DIM.: 21mm*11.5mm	SERIAL No.:2021122302
MFR.: OLYMPIA	SUR.:1*0.0115	Shielding Angle:



LUMINANCE cd/(m2)		
G (DEG)	C0/180	C90/270
85	4952	1524
80	4716	2869
75	5014	3691
70	5307	4274
65	5506	4711
60	5682	5043
55	5812	5294
50	5921	5499
45	6012	5669

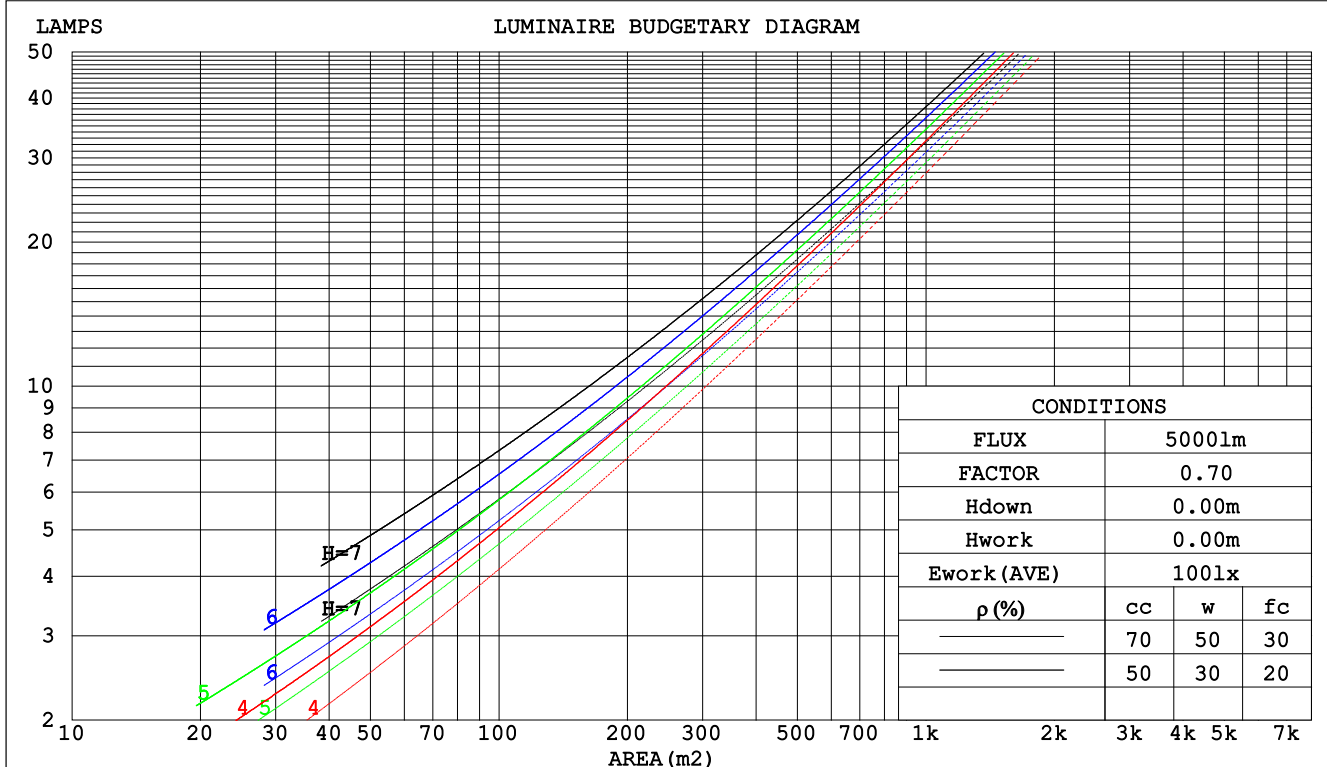
C Range: 0 - 360DEG
C Interval: 30.0DEG
Test Speed: HIGH
Temperature:25.3DEG
Operators:LPC
Test Date:2021-12-23

γ Range: 0 - 120DEG
 γ Interval: 1.0DEG
Test System:EVERFINE GO-2000B_V1 SYSTEM V2.0.362
Humidity:65.0%
Test Distance:9.200m [K=1.0000]
Remarks:

CU AND LUMINAIRE BUDGETARY ESTIMATE DIAGRAM

Test:U:48.00V I:0.2050A P:9.840W PF:1.000 Freq:50.00Hz Lamp Flux:211.756x1 lm		
NAME: SF15-48V-5050-60-G	TYPE: 硅胶	WEIGHT:
SPEC.:	DIM.: 21mm*11.5mm	SERIAL No.:2021122302
MFR.: OLYMPIA	SUR.:1*0.0115	Shielding Angle:

pcc	80%			70%			50%			30%			10%			0
pw	50%	30%	10%	50%	30%	10%	50%	30%	10%	50%	30%	10%	50%	30%	10%	0
pfc	20%			20%			20%			20%			20%			0
RCR	RCR:Room Cavity Ratio						Coefficients of Utilization(CU)									
0.0	1.19	1.19	1.19	1.16	1.16	1.16	1.10	1.10	1.10	1.05	1.05	1.05	1.01	1.01	1.01	.99
1.0	1.03	.99	.95	1.01	.97	.93	.96	.93	.90	.92	.89	.87	.88	.86	.84	.82
2.0	.90	.83	.77	.88	.81	.76	.84	.79	.74	.81	.76	.72	.77	.74	.70	.68
3.0	.79	.71	.64	.77	.69	.63	.74	.67	.62	.71	.65	.61	.68	.64	.59	.57
4.0	.70	.61	.54	.68	.60	.54	.66	.58	.53	.63	.57	.52	.61	.55	.51	.49
5.0	.62	.53	.47	.61	.53	.46	.59	.51	.46	.57	.50	.45	.55	.49	.44	.42
6.0	.56	.47	.41	.55	.47	.40	.53	.46	.40	.51	.45	.39	.50	.44	.39	.37
7.0	.51	.42	.36	.50	.42	.36	.48	.41	.35	.47	.40	.35	.45	.39	.35	.33
8.0	.46	.38	.32	.46	.37	.32	.44	.37	.32	.43	.36	.31	.42	.35	.31	.29
9.0	.43	.34	.29	.42	.34	.29	.41	.33	.28	.39	.33	.28	.38	.32	.28	.26
10.0	.39	.31	.26	.39	.31	.26	.38	.31	.26	.37	.30	.26	.36	.30	.25	.24



C Range: 0 - 360DEG
 C Interval: 30.0DEG
 Test Speed: HIGH
 Temperature:25.3DEG
 Operators:LPC
 Test Date:2021-12-23

γ Range: 0 - 120DEG
 γ Interval: 1.0DEG
 Test System:EVERFINE GO-2000B_V1 SYSTEM V2.0.362
 Humidity:65.0%
 Test Distance:9.200m [K=1.0000]
 Remarks:

WEC AND CCEC

Test:U:48.00V I:0.2050A P:9.840W PF:1.000 Freq:50.00Hz Lamp Flux:211.756x1 lm		
NAME: SF15-48V-5050-60-G	TYPE: 硅胶	WEIGHT:
SPEC.:	DIM.: 21mm*11.5mm	SERIAL No.:2021122302
MFR.: OLYMPIA	SUR.:1*0.0115	Shielding Angle:

pcc	80%			70%			50%			30%			10%			0	
pw	50%	30%	10%	50%	30%	10%	50%	30%	10%	50%	30%	10%	50%	30%	10%	0	
pfc	20%			20%			20%			20%			20%			0	
RCR	RCR:Room Cavity Ratio						Wall Exitance Coeffcients (WEC)										
0.0																	
1.0	.315	.179	.057	.308	.175	.056	.293	.168	.054	.280	.162	.052	.268	.156	.050		
2.0	.294	.161	.049	.287	.158	.049	.275	.153	.047	.263	.148	.046	.253	.143	.045		
3.0	.271	.144	.043	.265	.142	.043	.254	.138	.042	.244	.134	.041	.234	.130	.040		
4.0	.250	.130	.038	.245	.128	.038	.235	.124	.037	.226	.121	.037	.217	.118	.036		
5.0	.231	.118	.034	.226	.116	.034	.217	.113	.033	.209	.110	.033	.201	.108	.032		
6.0	.214	.107	.031	.210	.106	.030	.202	.103	.030	.194	.101	.030	.188	.099	.029		
7.0	.199	.098	.028	.195	.097	.028	.188	.095	.027	.181	.093	.027	.175	.091	.027		
8.0	.186	.091	.025	.182	.090	.025	.176	.088	.025	.170	.086	.025	.164	.084	.025		
9.0	.174	.084	.023	.171	.083	.023	.165	.082	.023	.160	.080	.023	.155	.079	.023		
10.0	.163	.078	.022	.161	.078	.022	.156	.076	.021	.151	.075	.021	.146	.073	.021		

pcc	80%			70%			50%			30%			10%			0
pw	50%	30%	10%	50%	30%	10%	50%	30%	10%	50%	30%	10%	50%	30%	10%	0
pfc	20%			20%			20%			20%			20%			0
RCR	RCR:Room Cavity Ratio						Ceiling Cavity Exitance Coefficients(CCEC)									
0.0	.202	.202	.202	.172	.172	.172	.118	.118	.118	.068	.068	.068	.022	.022	.022	
1.0	.192	.167	.145	.164	.144	.125	.112	.099	.086	.065	.057	.050	.021	.018	.016	
2.0	.184	.143	.109	.157	.123	.094	.108	.085	.066	.062	.050	.039	.020	.016	.013	
3.0	.176	.126	.085	.151	.108	.074	.104	.075	.052	.060	.044	.031	.019	.014	.010	
4.0	.168	.112	.070	.144	.097	.060	.099	.068	.043	.057	.040	.025	.018	.013	.008	
5.0	.161	.102	.059	.138	.088	.051	.095	.062	.036	.055	.036	.021	.018	.012	.007	
6.0	.154	.094	.051	.132	.081	.044	.091	.057	.031	.053	.033	.019	.017	.011	.006	
7.0	.147	.087	.045	.126	.075	.039	.087	.053	.028	.051	.031	.016	.016	.010	.005	
8.0	.140	.081	.040	.121	.070	.035	.084	.049	.025	.049	.029	.015	.016	.010	.005	
9.0	.134	.076	.037	.116	.066	.032	.080	.046	.023	.047	.027	.014	.015	.009	.004	
10.0	.129	.072	.034	.111	.062	.030	.077	.044	.021	.045	.026	.013	.015	.009	.004	

C Range: 0 - 360DEG
C Interval: 30.0DEG
Test Speed: HIGH
Temperature:25.3DEG
Operators:LPC
Test Date:2021-12-23

γ Range: 0 - 120DEG
γ Interval: 1.0DEG
Test System:EVERFINE GO-2000B_V1 SYSTEM V2.0.362
Humidity:65.0%
Test Distance:9.200m [K=1.0000]
Remarks:

UGR(Unified Glare Rating) Table

Test:U:48.00V I:0.2050A P:9.840W PF:1.000 Freq:50.00Hz Lamp Flux:211.756x1 lm											
NAME: SF15-48V-5050-60-G					TYPE:硅胶			WEIGHT:			
SPEC.:					DIM.: 21mm*11.5mm			SERIAL No.:2021122302			
MFR.: OLYMPIA					SUR.:1*0.0115			Shielding Angle:			
ceiling/cavity	0.7	0.7	0.5	0.5	0.3	0.7	0.7	0.5	0.5	0.3	
walls	0.5	0.3	0.5	0.3	0.3	0.5	0.3	0.5	0.3	0.3	
working plane	0.2	0.2	0.2	0.2	0.2	0.2	0.2	0.2	0.2	0.2	
Room dimensions		Viewed crosswise				Viewed endwise					
x = 2H y = 2H	24.6	26.1	24.8	26.3	26.5	24.2	25.7	24.5	26.0	26.2	
	3H	26.1	27.5	26.5	27.8	28.1	25.6	27.0	26.0	27.3	27.6
	4H	26.8	28.1	27.1	28.4	28.7	26.1	27.5	26.5	27.7	28.0
	6H	27.3	28.5	27.6	28.8	29.1	26.4	27.7	26.8	28.0	28.3
	8H	27.5	28.7	27.8	29.0	29.3	26.5	27.7	26.9	28.0	28.3
	12H	27.6	28.8	28.0	29.1	29.4	26.5	27.7	26.9	28.0	28.3
4H	2H	25.2	26.6	25.6	26.8	27.1	25.0	26.3	25.3	26.6	26.9
	3H	27.0	28.2	27.4	28.5	28.9	26.7	27.8	27.1	28.2	28.5
	4H	27.8	28.9	28.2	29.3	29.6	27.4	28.4	27.8	28.8	29.1
	6H	28.5	29.4	28.9	29.8	30.2	27.8	28.8	28.3	29.2	29.5
	8H	28.7	29.6	29.2	30.0	30.4	27.9	28.8	28.4	29.2	29.6
	12H	28.9	29.7	29.4	30.1	30.6	28.0	28.8	28.4	29.2	29.6
8H	4H	28.2	29.1	28.6	29.5	29.9	27.8	28.7	28.2	29.1	29.5
	6H	29.0	29.8	29.5	30.2	30.7	28.5	29.2	29.0	29.7	30.1
	8H	29.4	30.0	29.9	30.5	31.0	28.8	29.4	29.2	29.9	30.3
	12H	29.7	30.3	30.2	30.7	31.3	28.9	29.5	29.4	29.9	30.4
12H	4H	28.2	29.0	28.7	29.5	29.9	27.8	28.6	28.3	29.1	29.5
	6H	29.1	29.8	29.6	30.2	30.7	28.6	29.3	29.1	29.7	30.2
	8H	29.6	30.1	30.1	30.6	31.1	29.0	29.5	29.5	30.0	30.5
Variations with the observer position at spacings:											
S = 1.0H	+ 0.1 / - 0.2					+ 0.2 / - 0.2					
1.5H	+ 0.2 / - 0.3					+ 0.3 / - 0.4					
2.0H	+ 0.1 / - 0.4					+ 0.2 / - 0.5					

CIE Pub.117, 211.8 lm Total Lamp Luminous Flux Correct (8log(F/F0) = -5.4)

C Range: 0 - 360DEG
C Interval: 30.0DEG
Test Speed: HIGH
Temperature:25.3DEG
Operators:LPC
Test Date:2021-12-23

γ Range: 0 - 120DEG
γ Interval: 1.0DEG
Test System:EVERFINE GO-2000B_V1 SYSTEM V2.0.362
Humidity:65.0%
Test Distance:9.200m [K=1.0000]
Remarks:

UTILIZATION FACTORS TABLE

Test:U:48.00V I:0.2050A P:9.840W PF:1.000 Freq:50.00Hz Lamp Flux:211.756x1 lm		
NAME: SF15-48V-5050-60-G	TYPE: 硅胶	WEIGHT:
SPEC.:	DIM.: 21mm*11.5mm	SERIAL No.:2021122302
MFR.: OLYMPIA	SUR.:1*0.0115	Shielding Angle:

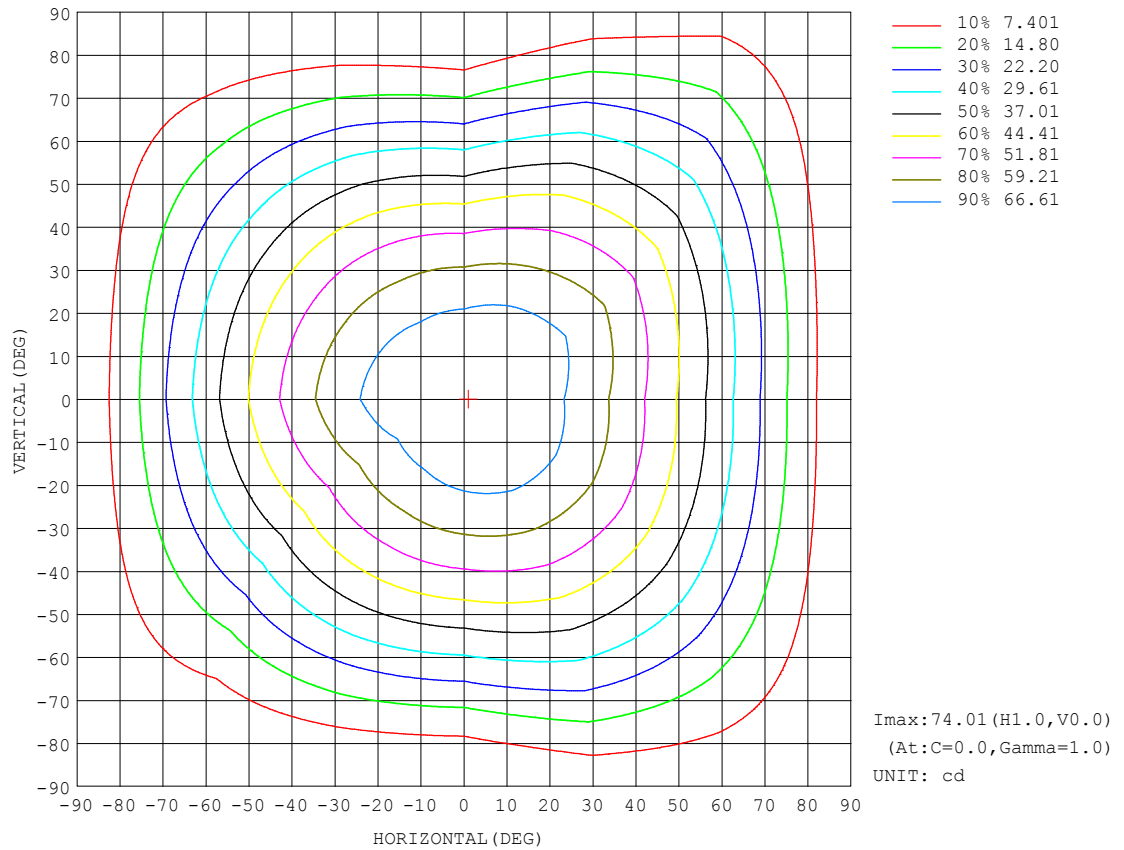
REFLECTANCE										
Ceiling	0.8	0.8	0.8	0.7	0.7	0.7	0.5	0.5	0.5	0
Walls	0.7	0.5	0.3	0.7	0.5	0.3	0.7	0.5	0.3	0
Working plane	0.2	0.2	0.2	0.2	0.2	0.2	0.2	0.2	0.2	0
ROOM INDEX	UTILIZATION FACTORS (PERCENT) k(RI) × RCR = 5									
k = 0.60	57	45	38	56	45	38	55	45	38	32
0.80	67	55	48	66	55	48	64	54	47	40
1.00	75	64	57	74	63	56	72	65	56	49
1.25	82	72	64	81	71	64	78	69	63	56
1.50	87	77	70	86	76	70	82	74	68	61
2.00	94	85	79	92	84	78	89	82	76	68
2.50	98	90	84	96	89	83	92	86	81	72
3.00	101	94	89	99	93	88	95	90	85	76
4.00	106	100	95	103	98	93	99	94	91	81
5.00	108	103	99	105	101	97	101	97	94	84
ROOM INDEX	UF (total)									Direct
According to DIN EN 13032-2 2004										
Suspended										
SHRNM = 1.25										

C Range: 0 - 360DEG
C Interval: 30.0DEG
Test Speed: HIGH
Temperature:25.3DEG
Operators:LPC
Test Date:2021-12-23

γ Range: 0 - 120DEG
 γ Interval: 1.0DEG
Test System:EVERFINE GO-2000B_V1 SYSTEM V2.0.362
Humidity:65.0%
Test Distance:9.200m [K=1.0000]
Remarks:

ISOCANDELA DIAGRAM

Test:U:48.00V I:0.2050A P:9.840W PF:1.000 Freq:50.00Hz Lamp Flux:211.756x1 lm		
NAME: SF15-48V-5050-60-G	TYPE: 硅胶	WEIGHT:
SPEC.:	DIM.: 21mm*11.5mm	SERIAL No.:2021122302
MFR.: OLYMPIA	SUR.:1*0.0115	Shielding Angle:

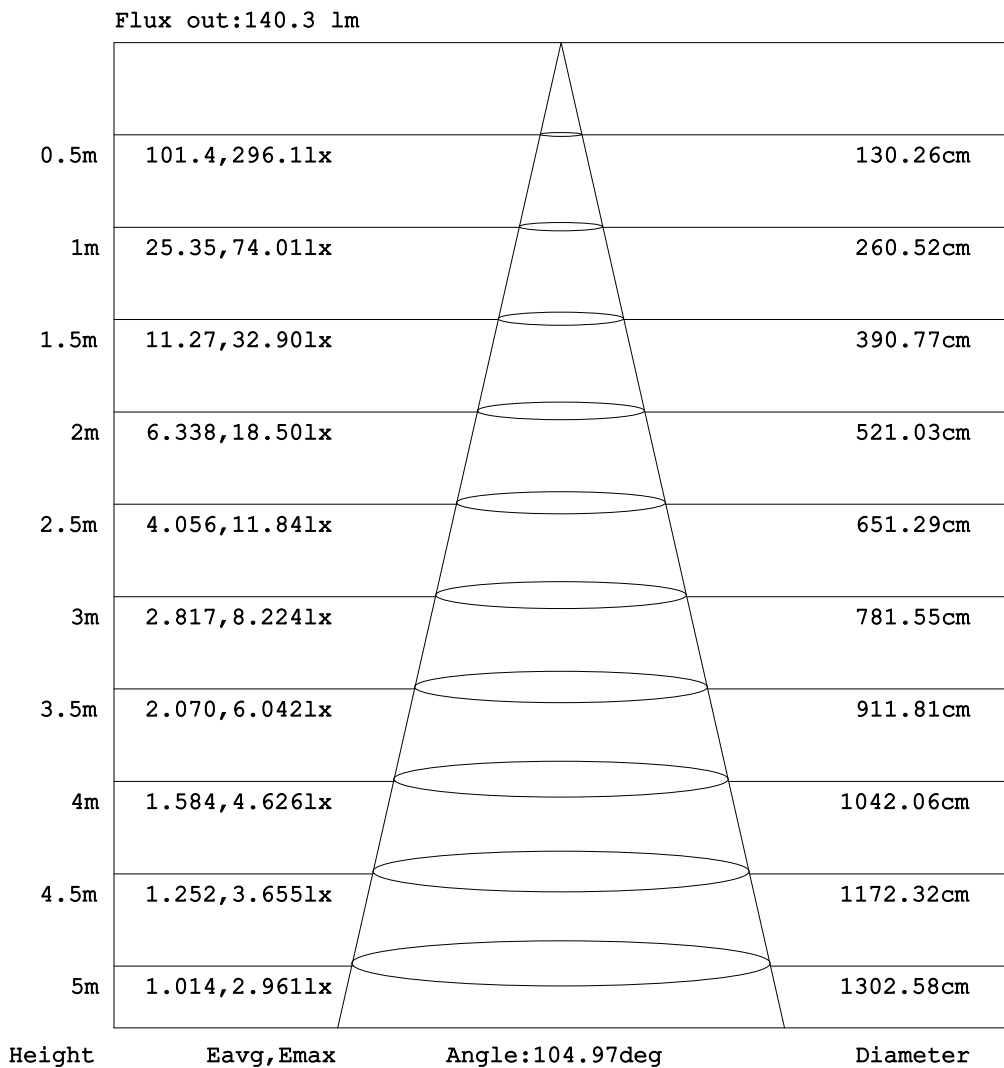


C Range: 0 - 360DEG
 C Interval: 30.0DEG
 Test Speed: HIGH
 Temperature:25.3DEG
 Operators:LPC
 Test Date:2021-12-23

γ Range: 0 - 120DEG
 γ Interval: 1.0DEG
 Test System:EVERFINE GO-2000B_V1 SYSTEM V2.0.362
 Humidity:65.0%
 Test Distance:9.200m [K=1.0000]
 Remarks:

AAI Figure

Test:U:48.00V I:0.2050A P:9.840W PF:1.000 Freq:50.00Hz Lamp Flux:211.756x1 lm		
NAME: SF15-48V-5050-60-G	TYPE: 硅胶	WEIGHT:
SPEC.:	DIM.: 21mm*11.5mm	SERIAL No.:2021122302
MFR.: OLYMPIA	SUR.:1*0.0115	Shielding Angle:



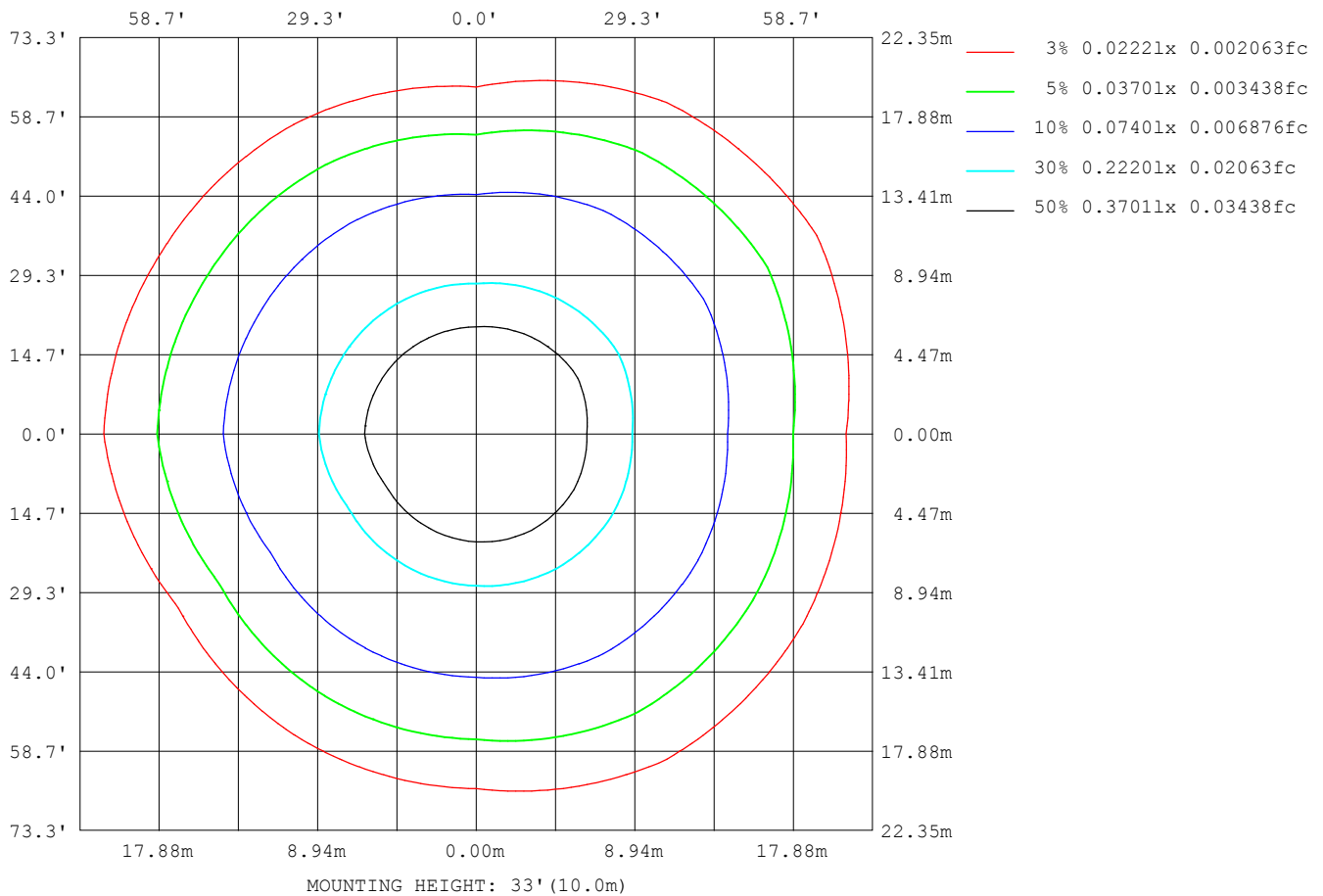
Note: The Curves indicate the illuminated area and the average illumination when the luminaire is at different distance.

C Range: 0 - 360DEG
C Interval: 30.0DEG
Test Speed: HIGH
Temperature: 25.3DEG
Operators: LPC
Test Date: 2021-12-23

γ Range: 0 - 120DEG
γ Interval: 1.0DEG
Test System: EVERFINE GO-2000B_V1 SYSTEM V2.0.362
Humidity: 65.0%
Test Distance: 9.200m [K=1.0000]
Remarks:

ISOLUX DIAGRAM

Test:U:48.00V I:0.2050A P:9.840W PF:1.000 Freq:50.00Hz Lamp Flux:211.756x1 lm		
NAME: SF15-48V-5050-60-G	TYPE: 硅胶	WEIGHT:
SPEC.:	DIM.: 21mm*11.5mm	SERIAL No.:2021122302
MFR.: OLYMPIA	SUR.:1*0.0115	Shielding Angle:



C Range: 0 - 360DEG
 C Interval: 30.0DEG
 Test Speed: HIGH
 Temperature: 25.3DEG
 Operators: LPC
 Test Date: 2021-12-23

γ Range: 0 - 120DEG
 γ Interval: 1.0DEG
 Test System: EVERFINE GO-2000B_V1 SYSTEM V2.0.362
 Humidity: 65.0%
 Test Distance: 9.200m [K=1.0000]
 Remarks:

LED Avg.L Report

Test:U:48.00V I:0.2050A P:9.840W PF:1.000 Freq:50.00Hz Lamp Flux:211.756x1 lm		
NAME: SF15-48V-5050-60-G	TYPE:硅胶	WEIGHT:
SPEC.:	DIM.: 21mm*11.5mm	SERIAL No.:2021122302
MFR.: OLYMPIA	SUR.:1*0.0115	Shielding Angle:

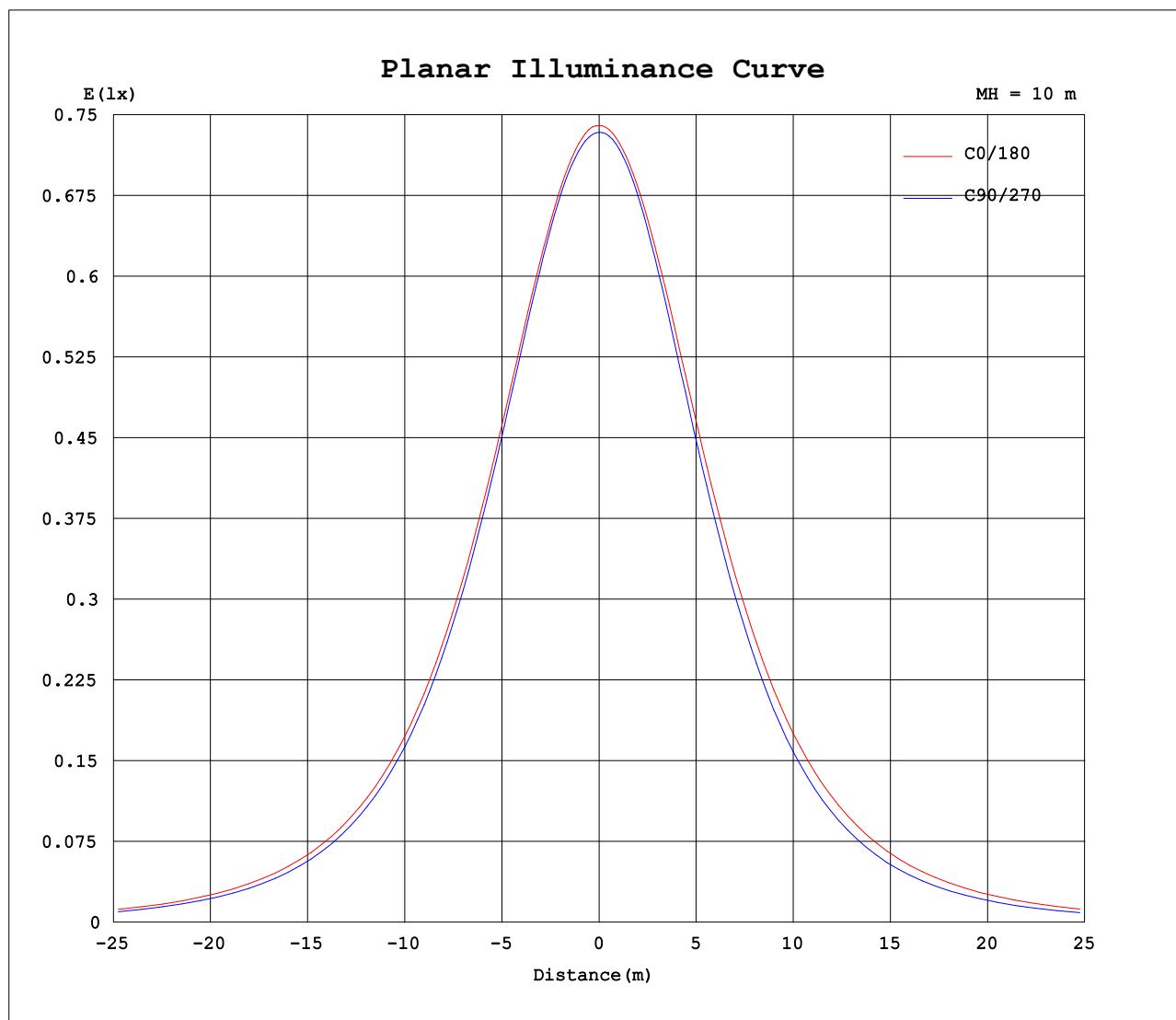
AvgL	cd/m2
L_0~180 (65) av	5573
L_0~180 (75) av	5087
L_0~180 (85) av	5147
L_90~270 (65) av	4513
L_90~270 (75) av	3375
L_90~270 (85) av	1070
L_45 (65) av	5510
L_45 (75) av	5063
L_45 (85) av	5180

Standard: GB/T 29293-2012

C Range: 0 - 360DEG
C Interval: 30.0DEG
Test Speed: HIGH
Temperature:25.3DEG
Operators:LPC
Test Date:2021-12-23

γ Range: 0 - 120DEG
γ Interval: 1.0DEG
Test System:EVERFINE GO-2000B_V1 SYSTEM V2.0.362
Humidity:65.0%
Test Distance:9.200m [K=1.0000]
Remarks:

Planar Illuminance Curve



C Range: 0 - 360DEG
C Interval: 30.0DEG
Test Speed: HIGH
Temperature: 25.3DEG
Operators: LPC
Test Date: 2021-12-23

γ Range: 0 - 120DEG
 γ Interval: 1.0DEG
Test System: EVERFINE GO-2000B_V1 SYSTEM V2.0.362
Humidity: 65.0%
Test Distance: 9.200m [K=1.0000]
Remarks:

LUMINOUS DISTRIBUTION INTENSITY DATA

Test:U:48.00V I:0.2050A P:9.840W PF:1.000 Freq:50.00Hz Lamp Flux:211.756x1 lm		
NAME: SF15-48V-5050-60-G	TYPE: 硅胶	WEIGHT:
SPEC.:	DIM.: 21mm*11.5mm	SERIAL No.:2021122302
MFR.: OLYMPIA	SUR.:1*0.0115	Shielding Angle:

Table--1

UNIT: cd

C (DEG) γ (DEG)	0	30	60	90	120	150	180	210	240	270	300	330						
0	74.0	73.9	73.6	73.4	73.3	73.3	74.0	73.9	73.6	73.4	73.3	73.3						
5	73.7	73.8	73.6	73.0	72.4	72.2	73.7	73.4	73.0	73.1	73.4	73.7						
10	72.6	72.9	72.8	71.9	70.9	70.6	72.8	72.2	71.8	72.0	72.8	73.4						
15	70.8	71.5	71.2	70.1	68.7	68.3	71.2	70.4	69.7	70.0	71.3	72.4						
20	68.5	69.4	68.9	67.4	65.8	65.4	68.9	67.9	66.9	67.2	69.1	70.5						
25	65.5	66.5	66.0	64.3	62.4	61.9	66.1	64.8	63.7	63.8	66.2	68.0						
30	62.1	63.2	62.4	60.4	58.6	58.0	62.7	61.2	60.0	59.9	62.6	65.2						
35	58.1	59.3	58.4	56.1	54.4	53.6	58.8	57.2	55.9	55.2	58.6	62.0						
40	53.7	55.1	54.1	51.3	49.7	48.8	54.5	52.7	51.4	50.3	54.5	58.1						
45	48.9	50.4	49.5	46.1	44.8	43.7	49.7	47.8	46.5	44.8	50.4	53.8						
50	43.8	45.5	44.6	40.7	39.5	38.2	44.5	42.5	41.3	39.1	45.9	49.0						
55	38.3	40.1	39.5	34.9	34.0	32.5	39.1	36.9	35.8	33.1	40.8	44.0						
60	32.7	34.6	34.2	29.0	28.2	26.6	33.4	31.1	30.0	27.1	35.5	38.6						
65	26.8	28.8	28.5	22.9	22.2	20.6	27.4	25.1	24.0	21.0	29.9	33.0						
70	20.9	22.9	22.8	16.8	16.3	14.7	21.4	19.0	18.0	14.9	24.2	27.2						
75	14.9	16.9	17.0	11.0	10.6	9.23	15.4	13.0	12.0	9.10	18.2	21.3						
80	9.42	11.2	11.4	5.73	5.51	4.91	9.82	7.62	6.60	3.93	12.4	15.4						
85	4.96	6.15	6.18	1.53	2.24	2.23	5.35	3.65	2.55	0.62	7.02	9.67						
90	2.34	2.85	2.46	0.68	1.31	1.32	2.34	1.46	0.88	0.36	2.71	4.89						
95	1.16	1.36	1.25	0.73	1.25	1.27	0.99	0.93	0.86	0.37	0.94	2.09						
100	0.94	1.11	1.14	0.80	1.19	1.24	0.76	0.88	0.83	0.44	0.76	0.87						
105	0.94	1.12	1.08	0.89	1.13	1.08	0.59	0.89	0.72	0.61	0.66	0.76						
110	0.97	1.15	1.13	0.92	1.17	0.76	0.41	0.89	0.85	0.62	0.76	0.75						
115	1.01	0.91	1.24	0.96	1.26	0.44	0.24	0.90	0.92	0.63	0.82	0.78						
120	1.04	0.26	1.17	1.01	0.21	0.13	0.07	0.94	0.31	0.69	0.75	0.85						
125	0.00	0.00	0.00	0.00	0.00	0.00	0.00	0.00	0.00	0.00	0.00	0.00						
130	0.00	0.00	0.00	0.00	0.00	0.00	0.00	0.00	0.00	0.00	0.00	0.00						
135	0.00	0.00	0.00	0.00	0.00	0.00	0.00	0.00	0.00	0.00	0.00	0.00						
140	0.00	0.00	0.00	0.00	0.00	0.00	0.00	0.00	0.00	0.00	0.00	0.00						
145	0.00	0.00	0.00	0.00	0.00	0.00	0.00	0.00	0.00	0.00	0.00	0.00						
150	0.00	0.00	0.00	0.00	0.00	0.00	0.00	0.00	0.00	0.00	0.00	0.00						
155	0.00	0.00	0.00	0.00	0.00	0.00	0.00	0.00	0.00	0.00	0.00	0.00						
160	0.00	0.00	0.00	0.00	0.00	0.00	0.00	0.00	0.00	0.00	0.00	0.00						
165	0.00	0.00	0.00	0.00	0.00	0.00	0.00	0.00	0.00	0.00	0.00	0.00						
170	0.00	0.00	0.00	0.00	0.00	0.00	0.00	0.00	0.00	0.00	0.00	0.00						
175	0.00	0.00	0.00	0.00	0.00	0.00	0.00	0.00	0.00	0.00	0.00	0.00						
180	0.00	0.00	0.00	0.00	0.00	0.00	0.00	0.00	0.00	0.00	0.00	0.00						

C Range: 0 - 360DEG
C Interval: 30.0DEG
Test Speed: HIGH
Temperature:25.3DEG
Operators:LPC
Test Date:2021-12-23

γ Range: 0 - 120DEG
γ Interval: 1.0DEG
Test System:EVERFINE GO-2000B_V1 SYSTEM V2.0.362
Humidity:65.0%
Test Distance:9.200m [K=1.0000]
Remarks:

Photometric Data Table [cd]

G/C	0.0	30.0	60.0	90.0	120.0	150.0	180.0	210.0	240.0	270.0
0.0	74.01	73.95	73.60	73.37	73.27	73.28	74.01	73.95	73.60	73.37
3.0	73.91	73.91	73.64	73.21	72.82	72.74	73.92	73.73	73.36	73.33
6.0	73.51	73.66	73.45	72.81	72.15	71.95	73.57	73.25	72.84	72.99
9.0	72.86	73.17	72.98	72.20	71.24	70.95	73.01	72.53	72.11	72.35
12.0	71.96	72.46	72.24	71.25	70.10	69.67	72.21	71.56	71.02	71.33
15.0	70.83	71.50	71.19	70.06	68.66	68.28	71.17	70.36	69.71	70.04
18.0	69.48	70.29	69.88	68.55	67.01	66.57	69.88	68.95	68.14	68.52
21.0	67.92	68.84	68.35	66.81	65.16	64.76	68.40	67.33	66.31	66.58
24.0	66.16	67.13	66.60	64.95	63.15	62.65	66.70	65.46	64.40	64.64
27.0	64.21	65.23	64.62	62.70	60.97	60.39	64.78	63.45	62.24	62.20
30.0	62.07	63.20	62.42	60.43	58.61	58.02	62.71	61.23	59.98	59.86
33.0	59.74	60.92	60.07	57.86	56.11	55.39	60.45	58.82	57.58	57.15
36.0	57.25	58.50	57.60	55.14	53.47	52.66	57.99	56.31	55.02	54.29
39.0	54.60	55.98	54.94	52.27	50.69	49.79	55.40	53.58	52.34	51.29
42.0	51.80	53.27	52.28	49.25	47.80	46.78	52.64	50.72	49.50	48.10
45.0	48.89	50.43	49.48	46.10	44.80	43.65	49.68	47.78	46.49	44.83
48.0	45.88	47.51	46.57	42.91	41.69	40.45	46.64	44.69	43.41	41.40
51.0	42.73	44.39	43.61	39.54	38.44	37.08	43.48	41.43	40.20	37.90
54.0	39.46	41.17	40.54	36.08	35.11	33.66	40.19	38.13	36.90	34.39
57.0	36.10	37.80	37.45	32.60	31.70	30.16	36.84	34.67	33.50	30.76
60.0	32.67	34.55	34.20	29.00	28.21	26.59	33.35	31.12	30.01	27.10
63.0	29.19	31.04	30.87	25.33	24.67	22.97	29.80	27.53	26.43	23.42
66.0	25.58	27.62	27.43	21.69	21.06	19.39	26.22	23.88	22.84	19.74
69.0	22.03	24.03	23.97	18.01	17.51	15.81	22.56	20.20	19.19	16.12
72.0	18.48	20.42	20.48	14.39	13.98	12.34	18.93	16.57	15.55	12.57
75.0	14.92	16.94	17.04	10.99	10.58	9.229	15.36	13.02	12.00	9.102
78.0	11.54	13.41	13.60	7.741	7.419	6.436	11.94	9.660	8.649	5.869
81.0	8.393	10.06	10.29	4.740	4.672	4.211	8.835	6.672	5.639	3.078
84.0	5.708	7.057	7.168	2.199	2.700	2.614	6.138	4.290	3.184	1.071
87.0	3.705	4.578	4.407	0.8485	1.601	1.657	3.950	2.528	1.575	0.4180
90.0	2.336	2.851	2.458	0.6785	1.307	1.321	2.343	1.460	0.8842	0.3605
93.0	1.505	1.792	1.505	0.7087	1.279	1.291	1.355	0.9808	0.8667	0.3578
96.0	1.052	1.220	1.197	0.7340	1.241	1.266	0.9042	0.9248	0.8493	0.3719
99.0	0.9348	1.139	1.155	0.7841	1.203	1.241	0.7952	0.8998	0.8318	0.4319
102.0	0.9379	1.091	1.115	0.8798	1.165	1.267	0.6915	0.8820	0.8143	0.5223
105.0	0.9398	1.116	1.076	0.8948	1.126	1.077	0.5878	0.8855	0.7238	0.6080
108.0	0.9597	1.141	1.060	0.9098	1.101	0.8867	0.4840	0.8890	0.7894	0.6182
111.0	0.9849	1.161	1.161	0.9248	1.211	0.6967	0.3803	0.8924	0.8847	0.6215
114.0	1.009	1.041	1.231	0.9500	1.251	0.5067	0.2766	0.8959	0.9198	0.6265
117.0	1.019	0.6506	1.246	0.9801	0.8409	0.3167	0.1729	0.8994	0.7790	0.6315
120.0	1.035	0.2602	1.166	1.005	0.2102	0.1267	0.0691	0.9398	0.3116	0.6936
G/C	300.0	330.0								
0.0	73.27	73.28								
3.0	73.39	73.58								
6.0	73.31	73.66								
9.0	72.98	73.53								
12.0	72.29	73.09								
15.0	71.31	72.37								
18.0	70.05	71.35								
21.0	68.56	70.04								
24.0	66.82	68.51								
27.0	64.82	66.95								
30.0	62.63	65.22								
33.0	60.29	63.35								
36.0	57.80	61.24								
39.0	55.31	58.89								
42.0	52.87	56.39								
45.0	50.36	53.77								
48.0	47.79	50.98								
51.0	44.93	48.05								
54.0	41.87	45.08								
57.0	38.73	41.92								
60.0	35.49	38.61								
63.0	32.17	35.31								
66.0	28.78	31.93								
69.0	25.30	28.40								
72.0	21.78	24.88								
75.0	18.25	21.30								
78.0	14.75	17.71								
81.0	11.30	14.18								
84.0	8.010	10.79								
87.0	5.088	7.584								
90.0	2.713	4.892								

C Range: 0 - 360DEG
 C Interval: 30.0DEG
 Test Speed: HIGH
 Temperature: 25.3DEG
 Operators: LPC
 Test Date: 2021-12-23

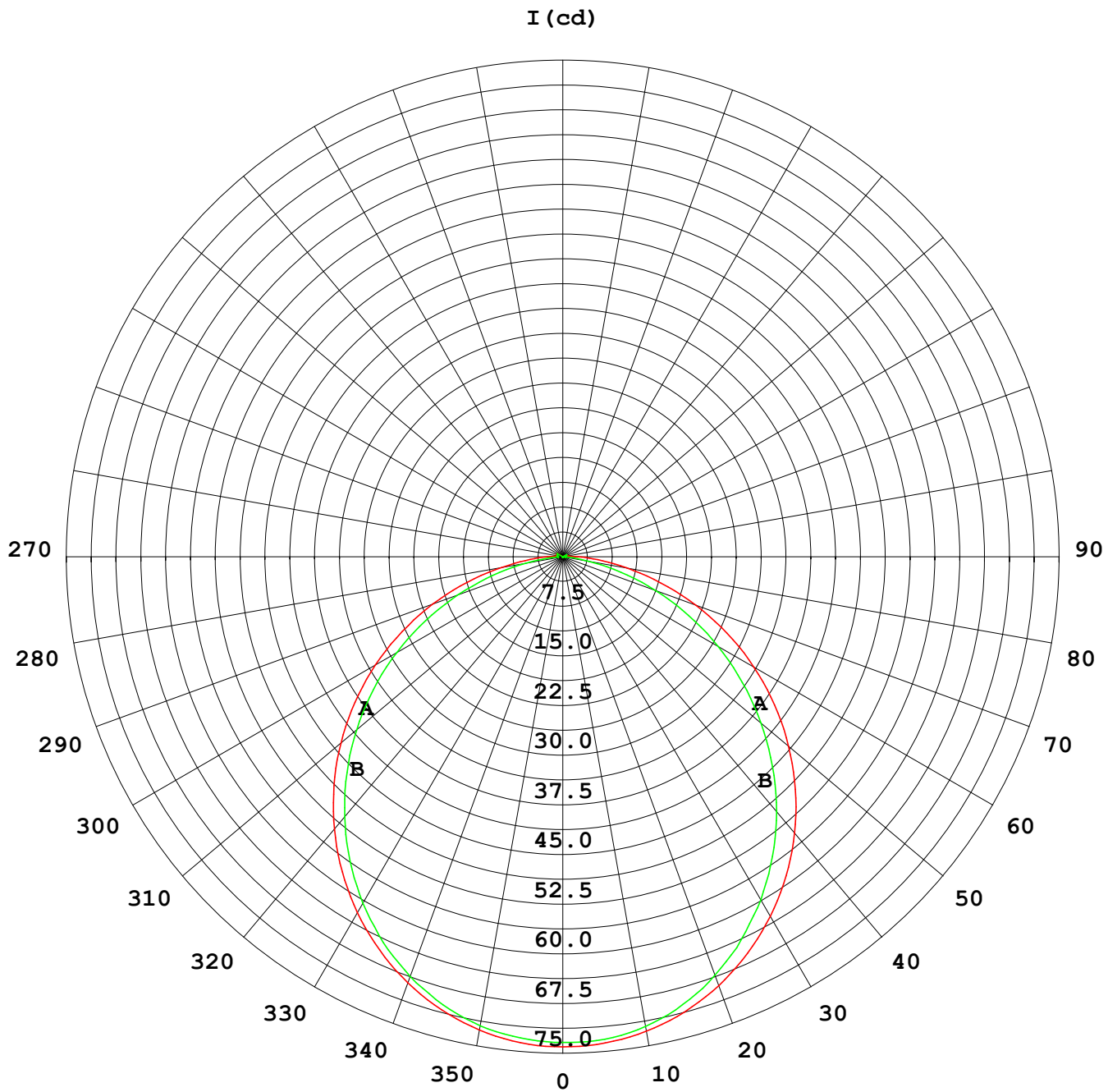
γ Range: 0 - 120DEG
 γ Interval: 1.0DEG
 Test System: EVERFINE GO-2000B_V1 SYSTEM V2.0.362
 Humidity: 65.0%
 Test Distance: 9.200m [K=1.0000]
 Remarks:

Photometric Data Table [cd]

93.0	1.369	2.980
96.0	0.9077	1.742
99.0	0.7998	1.067
102.0	0.7689	0.7592
105.0	0.6633	0.7572
108.0	0.6840	0.7552
111.0	0.8044	0.7688
114.0	0.8161	0.7789
117.0	0.7989	0.7940
120.0	0.7488	0.8544

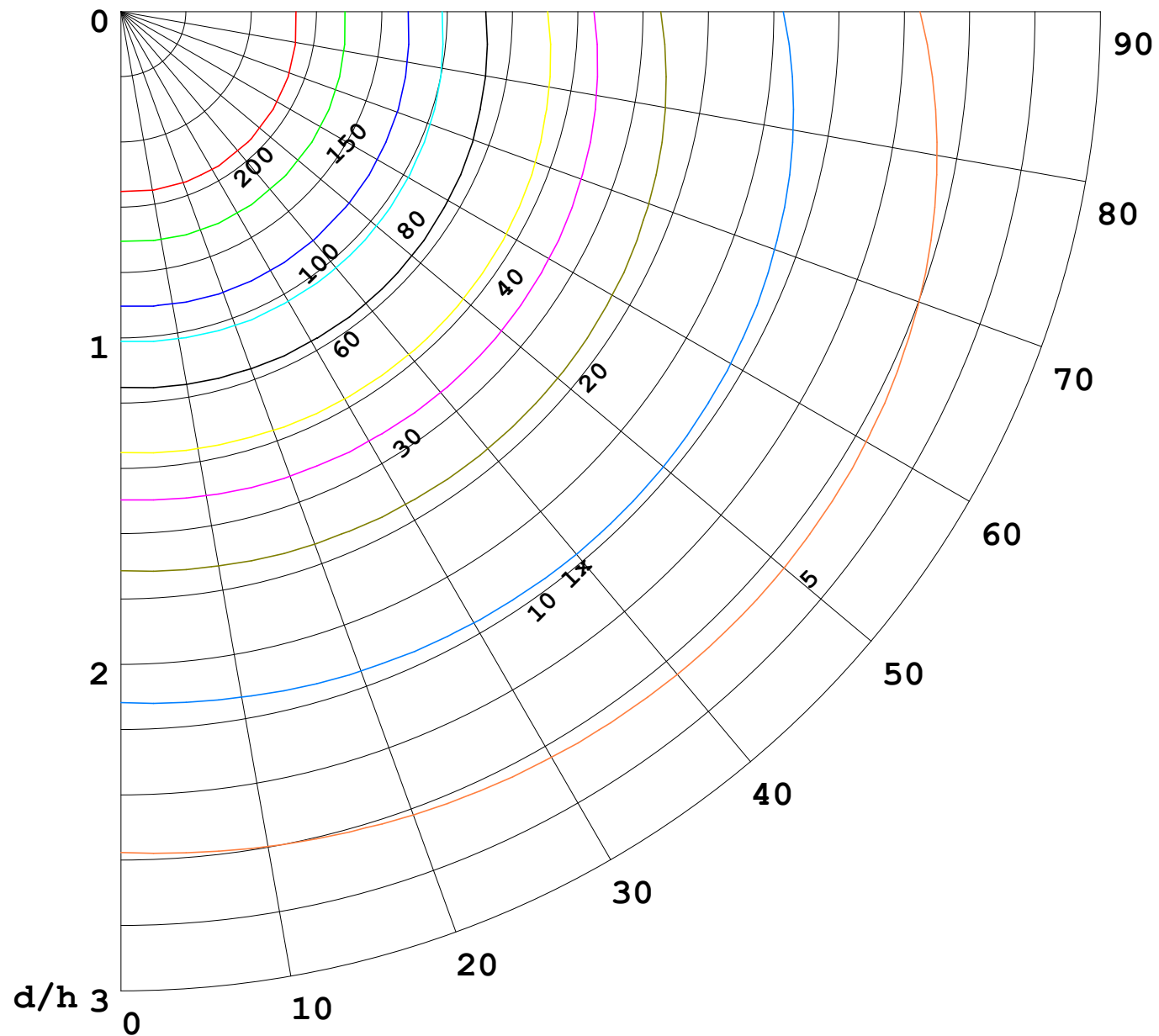
C Range: 0 - 360DEG
C Interval: 30.0DEG
Test Speed: HIGH
Temperature: 25.3DEG
Operators: LPC
Test Date: 2021-12-23

γ Range: 0 - 120DEG
γ Interval: 1.0DEG
Test System: EVERFINE GO-2000B_V1 SYSTEM V2.0.362
Humidity: 65.0%
Test Distance: 9.200m [K=1.0000]
Remarks:



1000 lm

$\kappa = 1$



F = 5000 lm
 K = 0.7
 Hcc = 0.0 m
 Hfc = 0.0 m
 Eave = 100 lx

	Pcc	Pw	Pfc
—	70	50	30
—	50	30	20

