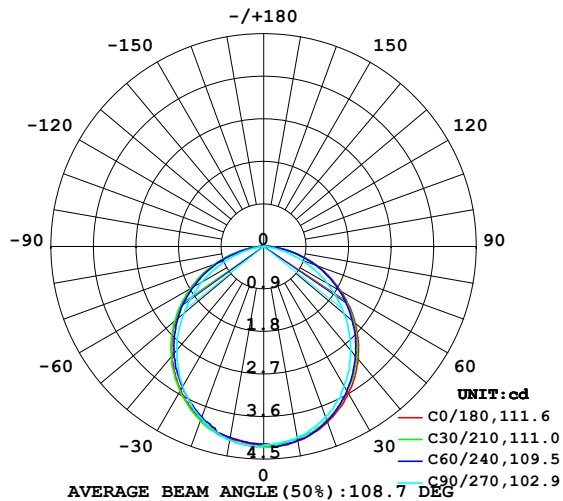


LUMINAIRE PHOTOMETRIC TEST REPORT

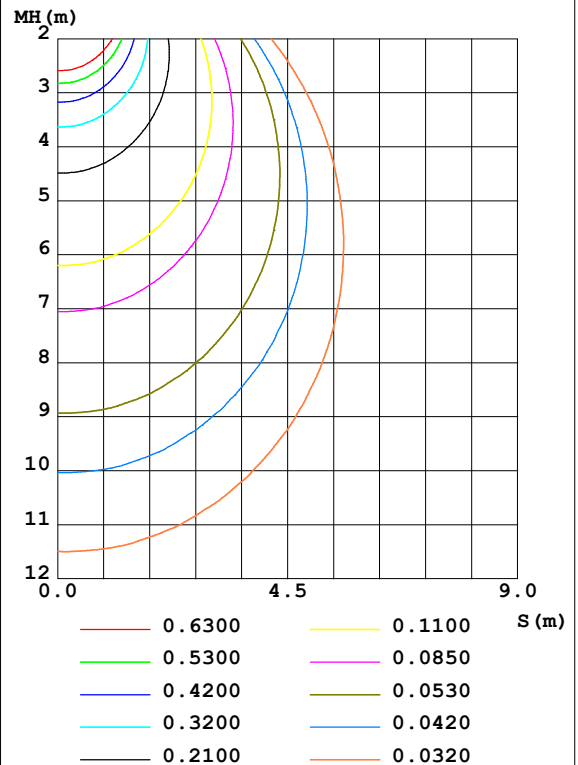
Test:U:24.00V I:0.2331A P:5.594W PF:1.000 Freq:50.00Hz Lamp Flux:11.6674x1 lm		
NAME: SF15-24V-3528-72-B	TYPE: 硅胶	WEIGHT:
SPEC.:	DIM.: 21mm*11.5mm	SERIAL No.:2021122203
MFR.: OLYMPIA	SUR.:1*0.0115	Shielding Angle:

DATA OF LAMP		PHOTOMETRIC DATA				Eff: 2.09 lm/W
MODEL	3528	I _{max} (cd)	4.247	S/MH (C0/180)	1.24	
NOMINAL POWER (W)	5	LOR (%)	100.0	S/MH (C90/270)	1.22	
RATED VOLTAGE (V)	24	TOTAL FLUX (lm)	11.667	η UP, DN (C0-180)	0.2, 49.8	
NOMINAL FLUX (lm)	11.6674	CIE CLASS	DIRECT	η UP, DN (C180-360)	0.1, 50.0	
LAMPS INSIDE	1	η up (%)	0.2	CIBSE SHR NOM	1.25	
TEST VOLTAGE (V)	24	η down (%)	99.8	CIBSE SHR MAX	1.35	

LUMINOUS INTENSITY DISTRIBUTION DIAGRAM



C0 PLANE ISOLUX DIAGRAM (UNIT:lx)



C Range: 0 - 360DEG
C Interval: 30.0DEG
Test Speed: HIGH
Temperature: 25.3DEG
Operators: LPC
Test Date: 2021-12-22

γ Range: 0 - 120DEG
γ Interval: 1.0DEG
Test System: EVERFINE GO-2000B_V1 SYSTEM V2.0.362
Humidity: 65.0%
Test Distance: 9.200m [K=1.0000]
Remarks:

ZONAL FLUX DIAGRAM

ZONAL FLUX DIAGRAM:

γ	C0	C45	C90	C135	C180	C225	C270	C315	γ	Φ zone	Φ total	%lum, lamp
10	4.182	4.154	4.096	4.096	4.136	4.131	4.161	4.147	0- 10	0.3979	0.3979	3.41,3.41
20	3.960	3.920	3.834	3.837	3.895	3.877	3.870	3.925	10- 20	1.138	1.535	13.2,13.2
30	3.584	3.533	3.407	3.443	3.508	3.488	3.423	3.528	20- 30	1.708	3.243	27.8,27.8
40	3.107	3.043	2.864	2.953	3.025	2.995	2.860	3.051	30- 40	2.037	5.280	45.3,45.3
50	2.529	2.470	2.226	2.355	2.447	2.417	2.212	2.515	40- 50	2.091	7.372	63.2,63.2
60	1.880	1.842	1.542	1.701	1.793	1.759	1.513	1.887	50- 60	1.868	9.240	79.2,79.2
70	1.207	1.181	0.8587	1.025	1.095	1.075	0.7997	1.231	60- 70	1.409	10.65	91.3,91.3
80	0.5434	0.5201	0.2307	0.3744	0.4266	0.4020	0.1814	0.5579	70- 80	0.7853	11.43	98,98
90	0.1008	0.0579	0	0.0277	0.0348	0.0252	0	0.0629	80- 90	0.2091	11.64	99.8,99.8
100	0.0051	0.0101	0	0.0126	0	0.0025	0	0	90-100	0.0154	11.66	99.9,99.9
110	0.0050	0.0050	0.0050	0.0126	0	0.0025	0	0	100-110	0.0049	11.66	100,100
120	0	0.0050	0.0050	0.0101	0	0	0	0	110-120	0.0040	11.67	100,100
130	0	0	0	0	0	0	0	0	120-130	0.0001	11.67	100,100
140	0	0	0	0	0	0	0	0	130-140	0	11.67	100,100
150	0	0	0	0	0	0	0	0	140-150	0	11.67	100,100
160	0	0	0	0	0	0	0	0	150-160	0	11.67	100,100
170	0	0	0	0	0	0	0	0	160-170	0	11.67	100,100
180	0	0	0	0	0	0	0	0	170-180	0	11.67	100,100
DEG	LUMINOUS INTENSITY:cd									UNIT:lm		

Conical surface Flux(90deg): 6.3366 lm

%lum = 54.3%

%lamp = 54.3%

Conical surface Flux(120deg): 9.24 lm

%lum = 79.2%

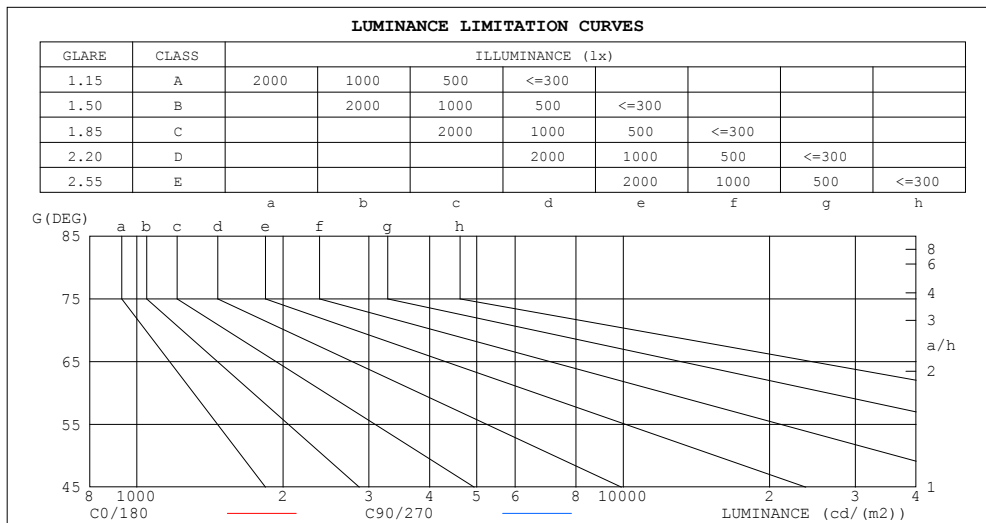
%lamp = 79.2%

C Range: 0 - 360DEG
 C Interval: 30.0DEG
 Test Speed: HIGH
 Temperature:25.3DEG
 Operators:LPC
 Test Date:2021-12-22

γ Range: 0 - 120DEG
 γ Interval: 1.0DEG
 Test System:EVERFINE GO-2000B_V1 SYSTEM V2.0.362
 Humidity:65.0%
 Test Distance:9.200m [K=1.0000]
 Remarks:

LUMINANCE LIMITATION CURVES

Test:U:24.00V I:0.2331A P:5.594W PF:1.000 Freq:50.00Hz Lamp Flux:11.6674x1 lm		
NAME: SF15-24V-3528-72-B	TYPE:硅胶	WEIGHT:
SPEC.:	DIM.: 21mm*11.5mm	SERIAL No.:2021122203
MFR.: OLYMPIA	SUR.:1*0.0115	Shielding Angle:



LUMINANCE cd/(m2)		
G (DEG)	C0/180	C90/270
85	271	0
80	272	116
75	292	179
70	307	218
65	321	247
60	327	268
55	336	286
50	342	301
45	348	315

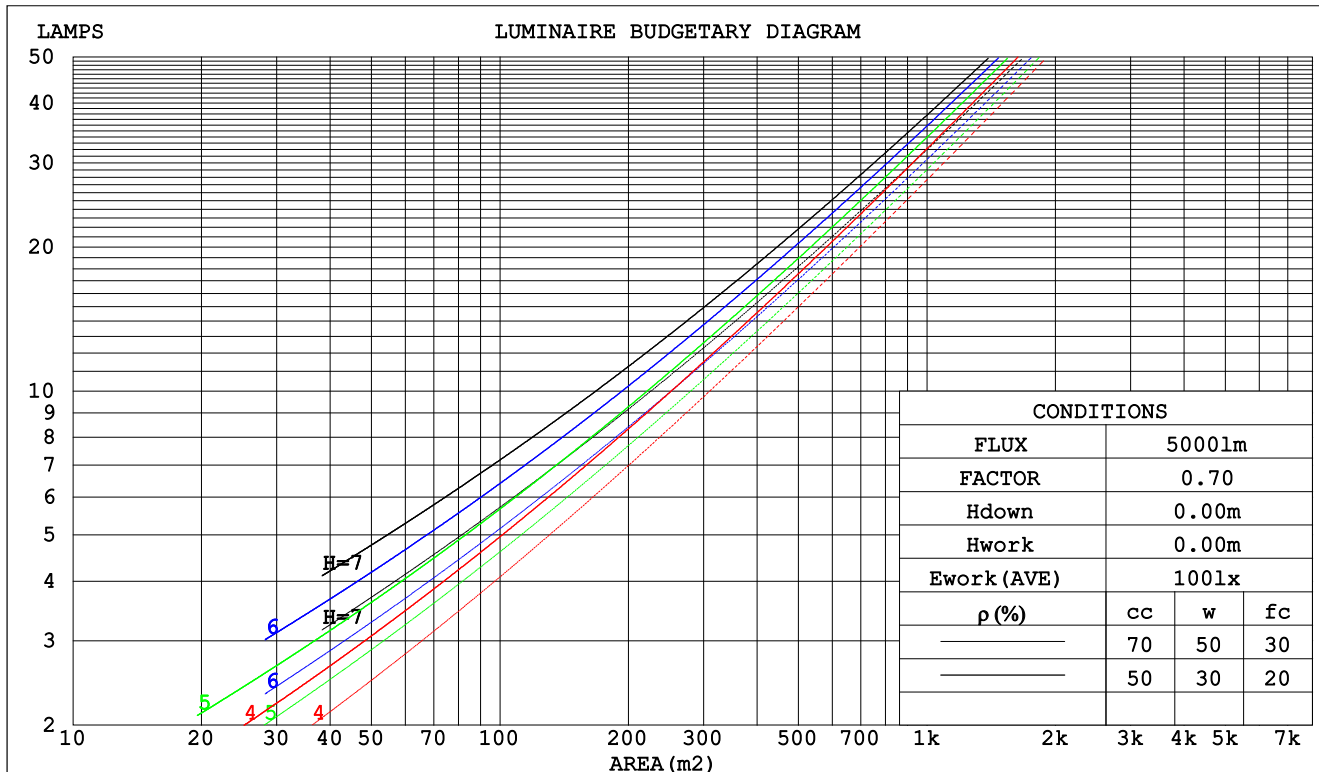
C Range: 0 - 360DEG
C Interval: 30.0DEG
Test Speed: HIGH
Temperature:25.3DEG
Operators:LPC
Test Date:2021-12-22

γ Range: 0 - 120DEG
 γ Interval: 1.0DEG
Test System:EVERFINE GO-2000B_V1 SYSTEM V2.0.362
Humidity:65.0%
Test Distance:9.200m [K=1.0000]
Remarks:

CU AND LUMINAIRE BUDGETARY ESTIMATE DIAGRAM

Test:U:24.00V I:0.2331A P:5.594W PF:1.000 Freq:50.00Hz Lamp Flux:11.6674x1 lm		
NAME: SF15-24V-3528-72-B	TYPE:硅胶	WEIGHT:
SPEC.:	DIM.: 21mm*11.5mm	SERIAL No.:2021122203
MFR.: OLYMPIA	SUR.:1*0.0115	Shielding Angle:

pcc	80%			70%			50%			30%			10%			0
pw	50%	30%	10%	50%	30%	10%	50%	30%	10%	50%	30%	10%	50%	30%	10%	0
pfc	20%			20%			20%			20%			20%			0
RCR	RCR:Room Cavity Ratio						Coefficients of Utilization(CU)									
0.0	1.19	1.19	1.19	1.16	1.16	1.16	1.11	1.11	1.11	1.06	1.06	1.06	1.02	1.02	1.02	.00
1.0	1.04	.00	.96	1.02	.98	.94	.97	.94	.91	.93	.91	.88	.90	.88	.86	.84
2.0	.91	.84	.78	.89	.83	.77	.85	.80	.75	.82	.77	.74	.79	.75	.72	.70
3.0	.80	.72	.65	.78	.70	.64	.75	.69	.63	.72	.67	.62	.70	.65	.61	.59
4.0	.71	.62	.55	.69	.61	.55	.67	.60	.54	.64	.58	.53	.62	.57	.52	.50
5.0	.63	.54	.47	.62	.53	.47	.60	.52	.47	.58	.51	.46	.56	.50	.46	.43
6.0	.57	.48	.41	.56	.47	.41	.54	.46	.41	.52	.46	.40	.51	.45	.40	.38
7.0	.52	.43	.37	.51	.42	.36	.49	.42	.36	.48	.41	.36	.46	.40	.36	.34
8.0	.47	.39	.33	.46	.38	.33	.45	.38	.32	.44	.37	.32	.43	.36	.32	.30
9.0	.43	.35	.29	.43	.35	.29	.41	.34	.29	.40	.34	.29	.39	.33	.29	.27
10.0	.40	.32	.27	.39	.32	.27	.38	.31	.26	.37	.31	.26	.36	.30	.26	.24



C Range: 0 - 360DEG
 C Interval: 30.0DEG
 Test Speed: HIGH
 Temperature:25.3DEG
 Operators:LPC
 Test Date:2021-12-22

γ Range: 0 - 120DEG
 γ Interval: 1.0DEG
 Test System:EVERFINE GO-2000B_V1 SYSTEM V2.0.362
 Humidity:65.0%
 Test Distance:9.200m [K=1.0000]
 Remarks:

WEC AND CCEC

Test:U:24.00V I:0.2331A P:5.594W PF:1.000 Freq:50.00Hz Lamp Flux:11.6674x1 lm		
NAME: SF15-24V-3528-72-B	TYPE: 硅胶	WEIGHT:
SPEC.:	DIM.: 21mm*11.5mm	SERIAL No.:2021122203
MFR.: OLYMPIA	SUR.:1*0.0115	Shielding Angle:

pcc	80%			70%			50%			30%			10%			0	
pw	50%	30%	10%	50%	30%	10%	50%	30%	10%	50%	30%	10%	50%	30%	10%	0	
pfc	20%			20%			20%			20%			20%			0	
RCR	RCR:Room Cavity Ratio						Wall Exitance Coefficients(WEC)										
0.0																	
1.0	.306	.174	.055	.299	.171	.054	.286	.164	.052	.274	.158	.051	.262	.152	.049		
2.0	.289	.158	.049	.283	.156	.048	.271	.151	.047	.260	.146	.046	.250	.141	.045		
3.0	.268	.142	.043	.262	.140	.042	.252	.136	.041	.242	.133	.041	.233	.129	.040		
4.0	.247	.129	.038	.242	.127	.038	.233	.124	.037	.225	.121	.036	.217	.118	.036		
5.0	.229	.117	.034	.225	.115	.034	.216	.113	.033	.209	.110	.033	.201	.108	.032		
6.0	.212	.106	.030	.209	.105	.030	.201	.103	.030	.194	.101	.030	.188	.099	.029		
7.0	.198	.098	.028	.194	.097	.028	.188	.095	.027	.182	.093	.027	.176	.091	.027		
8.0	.185	.090	.025	.182	.089	.025	.176	.088	.025	.170	.086	.025	.165	.085	.025		
9.0	.173	.084	.023	.170	.083	.023	.165	.082	.023	.160	.080	.023	.156	.079	.023		
10.0	.163	.078	.022	.160	.077	.022	.156	.076	.021	.151	.075	.021	.147	.074	.021		

pcc	80%			70%			50%			30%			10%			0
pw	50%	30%	10%	50%	30%	10%	50%	30%	10%	50%	30%	10%	50%	30%	10%	0
pfc	20%			20%			20%			20%			20%			0
RCR	RCR:Room Cavity Ratio						Ceiling Cavity Exitance Coefficients(CCEC)									
0.0	.192	.192	.192	.164	.164	.164	.112	.112	.112	.064	.064	.064	.021	.021	.021	
1.0	.182	.158	.136	.155	.135	.117	.106	.093	.081	.061	.054	.047	.020	.017	.015	
2.0	.173	.134	.100	.149	.115	.086	.102	.080	.060	.059	.046	.035	.019	.015	.012	
3.0	.166	.116	.076	.142	.100	.066	.098	.069	.046	.056	.041	.027	.018	.013	.009	
4.0	.158	.103	.060	.136	.089	.052	.093	.062	.037	.054	.036	.022	.017	.012	.007	
5.0	.151	.092	.049	.129	.080	.043	.089	.056	.030	.052	.033	.018	.017	.011	.006	
6.0	.143	.084	.041	.123	.073	.036	.085	.051	.025	.049	.030	.015	.016	.010	.005	
7.0	.137	.077	.035	.118	.067	.031	.081	.047	.022	.047	.028	.013	.015	.009	.004	
8.0	.130	.071	.030	.112	.062	.027	.078	.043	.019	.045	.026	.011	.015	.008	.004	
9.0	.124	.066	.027	.107	.057	.024	.074	.040	.017	.043	.024	.010	.014	.008	.003	
10.0	.119	.062	.024	.102	.054	.021	.071	.038	.015	.041	.022	.009	.013	.007	.003	

C Range: 0 - 360DEG
 C Interval: 30.0DEG
 Test Speed: HIGH
 Temperature:25.3DEG
 Operators:LPC
 Test Date:2021-12-22

γ Range: 0 - 120DEG
 γ Interval: 1.0DEG
 Test System:EVERFINE GO-2000B_V1 SYSTEM V2.0.362
 Humidity:65.0%
 Test Distance:9.200m [K=1.0000]
 Remarks:

UGR(Unified Glare Rating) Table

Test:U:24.00V I:0.2331A P:5.594W PF:1.000 Freq:50.00Hz Lamp Flux:11.6674x1 lm											
NAME: SF15-24V-3528-72-B						TYPE:硅胶			WEIGHT:		
SPEC.:						DIM.: 21mm*11.5mm			SERIAL No.:2021122203		
MFR.: OLYMPIA						SUR.:1*0.0115			Shielding Angle:		
ceiling/cavity	0.7	0.7	0.5	0.5	0.3	0.7	0.7	0.5	0.5	0.3	
walls	0.5	0.3	0.5	0.3	0.3	0.5	0.3	0.5	0.3	0.3	
working plane	0.2	0.2	0.2	0.2	0.2	0.2	0.2	0.2	0.2	0.2	
Room dimensions		Viewed crosswise					Viewed endwise				
x = 2H y = 2H	24.6	26.2	24.9	26.4	26.6	24.2	25.7	24.4	25.9	26.1	
	3H	26.2	27.6	26.5	27.9	28.1	25.4	26.8	25.7	27.1	27.3
	4H	26.9	28.2	27.2	28.5	28.7	25.9	27.2	26.2	27.5	27.7
	6H	27.4	28.6	27.7	28.9	29.2	26.1	27.3	26.4	27.6	27.9
	8H	27.6	28.8	27.9	29.1	29.4	26.1	27.3	26.4	27.6	27.9
	12H	27.7	28.8	28.0	29.1	29.5	26.0	27.2	26.4	27.5	27.8
4H	2H	25.3	26.6	25.6	26.8	27.1	24.9	26.2	25.2	26.5	26.7
	3H	27.0	28.2	27.4	28.5	28.8	26.5	27.6	26.8	27.9	28.2
	4H	27.8	28.9	28.2	29.2	29.5	27.0	28.1	27.4	28.4	28.8
	6H	28.4	29.4	28.8	29.7	30.1	27.4	28.3	27.8	28.7	29.1
	8H	28.7	29.5	29.1	29.9	30.3	27.4	28.3	27.9	28.7	29.1
	12H	28.8	29.7	29.3	30.0	30.5	27.4	28.2	27.8	28.6	29.0
8H	4H	28.1	29.0	28.5	29.3	29.7	27.4	28.3	27.8	28.7	29.1
	6H	28.9	29.6	29.3	30.0	30.4	28.0	28.7	28.4	29.1	29.6
	8H	29.2	29.8	29.6	30.3	30.7	28.1	28.8	28.6	29.2	29.7
	12H	29.4	30.0	29.9	30.4	30.9	28.2	28.7	28.7	29.2	29.7
12H	4H	28.1	28.9	28.5	29.3	29.7	27.5	28.3	27.9	28.7	29.1
	6H	28.9	29.6	29.4	30.0	30.5	28.1	28.7	28.5	29.2	29.6
	8H	29.3	29.8	29.8	30.3	30.8	28.3	28.8	28.8	29.3	29.8
Variations with the observer position at spacings:											
S = 1.0H	+ 0.1 / - 0.2					+ 0.2 / - 0.2					
1.5H	+ 0.2 / - 0.3					+ 0.3 / - 0.4					
2.0H	+ 0.2 / - 0.2					+ 0.2 / - 0.5					

CIE Pub.117, 11.67 lm Total Lamp Luminous Flux Correct (8log(F/F0) = -15.5)

C Range: 0 - 360DEG
C Interval: 30.0DEG
Test Speed: HIGH
Temperature:25.3DEG
Operators:LPC
Test Date:2021-12-22

γ Range: 0 - 120DEG
γ Interval: 1.0DEG
Test System:EVERFINE GO-2000B_V1 SYSTEM V2.0.362
Humidity:65.0%
Test Distance:9.200m [K=1.0000]
Remarks:

UTILIZATION FACTORS TABLE

Test:U:24.00V I:0.2331A P:5.594W PF:1.000 Freq:50.00Hz Lamp Flux:11.6674x1 lm		
NAME: SF15-24V-3528-72-B	TYPE: 硅胶	WEIGHT:
SPEC.:	DIM.: 21mm*11.5mm	SERIAL No.:2021122203
MFR.: OLYMPIA	SUR.:1*0.0115	Shielding Angle:

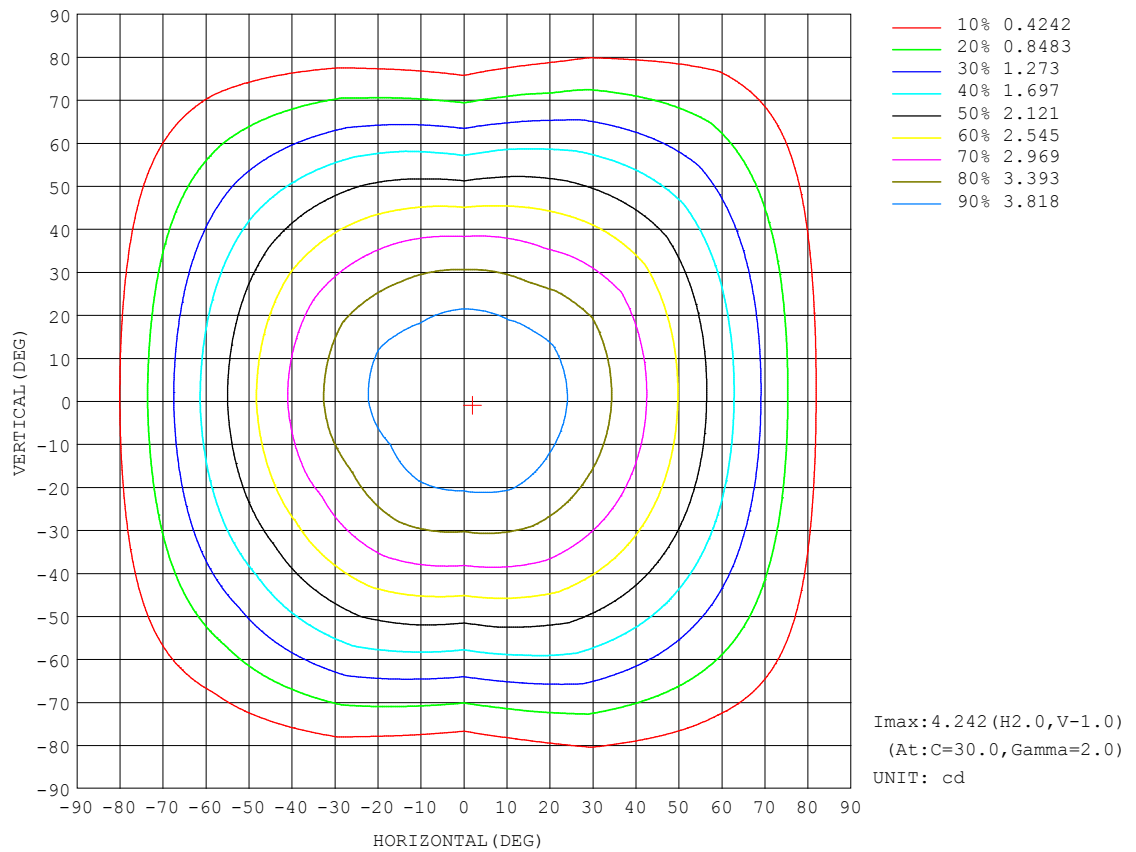
REFLECTANCE										
Ceiling	0.8	0.8	0.8	0.7	0.7	0.7	0.5	0.5	0.5	0
Walls	0.7	0.5	0.3	0.7	0.5	0.3	0.7	0.5	0.3	0
Working plane	0.2	0.2	0.2	0.2	0.2	0.2	0.2	0.2	0.2	0
ROOM INDEX	UTILIZATION FACTORS (PERCENT) $k(RI) \times RCR = 5$									
$k = 0.60$	58	46	39	57	46	39	56	46	39	33
0.80	68	56	49	67	56	49	65	55	48	42
1.00	76	65	58	75	65	58	73	66	57	50
1.25	83	73	66	82	72	65	79	71	65	57
1.50	88	79	72	87	78	71	84	76	70	62
2.00	95	87	80	93	85	79	90	83	78	70
2.50	99	91	85	97	90	84	93	87	83	74
3.00	102	96	90	100	94	89	96	91	87	78
4.00	106	101	96	104	99	95	100	96	92	83
5.00	109	104	100	106	102	98	102	98	95	86
ROOM INDEX	UF (total)									Direct
According to DIN EN 13032-2 2004			Suspended					SHRNOM = 1.25		

C Range: 0 - 360DEG
 C Interval: 30.0DEG
 Test Speed: HIGH
 Temperature: 25.3DEG
 Operators: LPC
 Test Date: 2021-12-22

γ Range: 0 - 120DEG
 γ Interval: 1.0DEG
 Test System: EVERFINE GO-2000B_V1 SYSTEM V2.0.362
 Humidity: 65.0%
 Test Distance: 9.200m [K=1.0000]
 Remarks:

ISOCANDELA DIAGRAM

Test:U:24.00V I:0.2331A P:5.594W PF:1.000 Freq:50.00Hz Lamp Flux:11.6674x1 lm		
NAME: SF15-24V-3528-72-B	TYPE: 硅胶	WEIGHT:
SPEC.:	DIM.: 21mm*11.5mm	SERIAL No.:2021122203
MFR.: OLYMPIA	SUR.:1*0.0115	Shielding Angle:

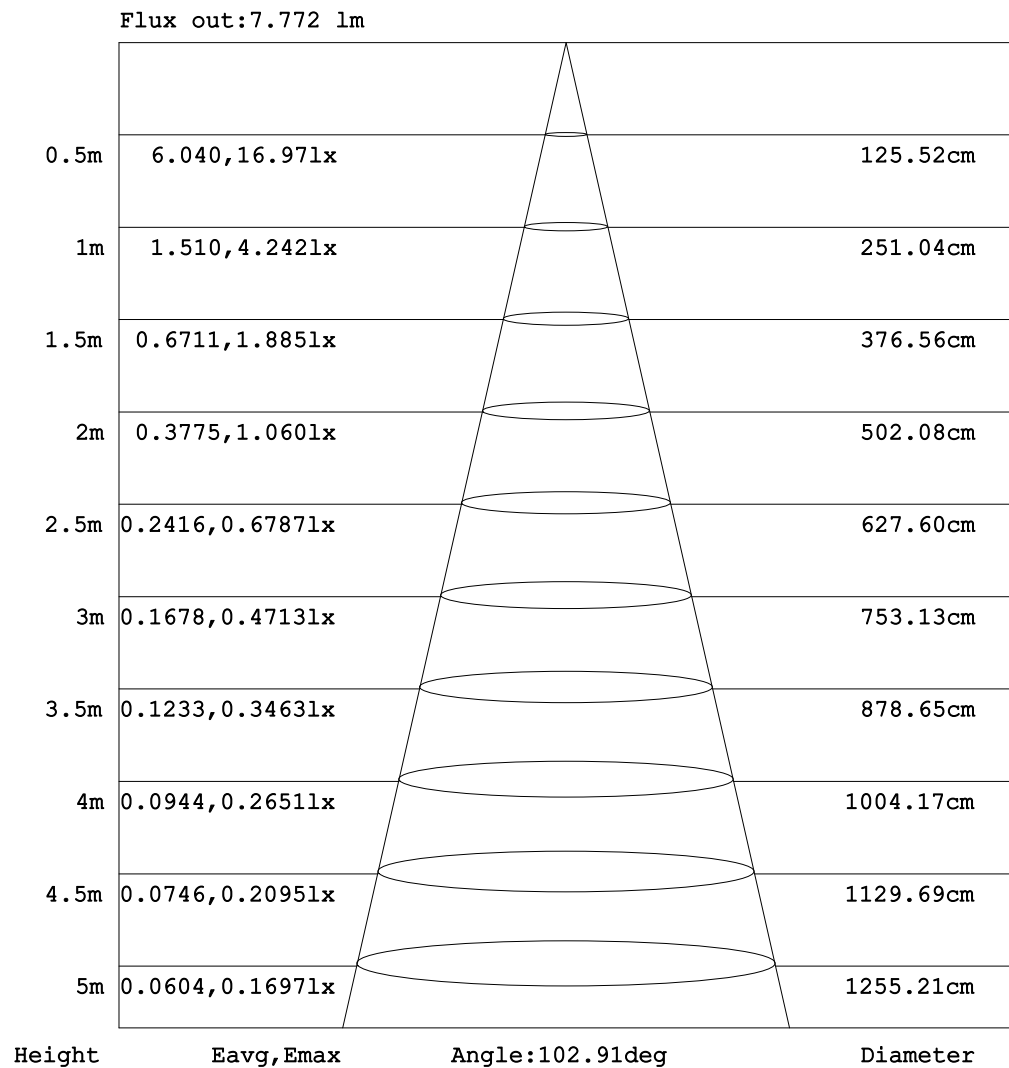


C Range: 0 - 360DEG
C Interval: 30.0DEG
Test Speed: HIGH
Temperature:25.3DEG
Operators:LPC
Test Date:2021-12-22

γ Range: 0 - 120DEG
 γ Interval: 1.0DEG
Test System:EVERFINE GO-2000B_V1 SYSTEM V2.0.362
Humidity:65.0%
Test Distance:9.200m [K=1.0000]
Remarks:

AAI Figure

Test:U:24.00V I:0.2331A P:5.594W PF:1.000 Freq:50.00Hz Lamp Flux:11.6674x1 lm		
NAME: SF15-24V-3528-72-B	TYPE: 硅胶	WEIGHT:
SPEC.:	DIM.: 21mm*11.5mm	SERIAL No.:2021122203
MFR.: OLYMPIA	SUR.:1*0.0115	Shielding Angle:



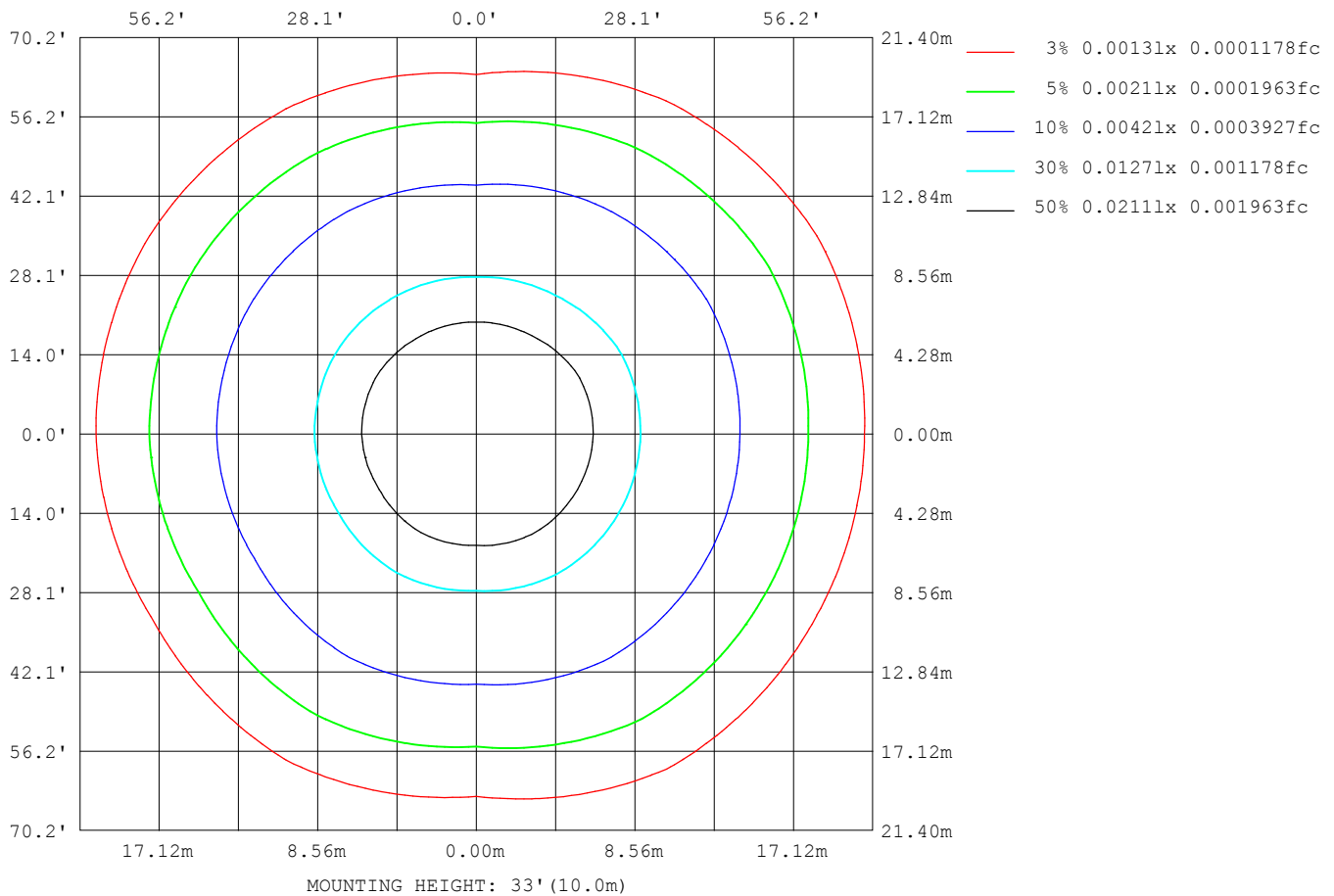
Note: The Curves indicate the illuminated area and the average illumination when the luminaire is at different distance.

C Range: 0 - 360DEG
 C Interval: 30.0DEG
 Test Speed: HIGH
 Temperature: 25.3DEG
 Operators: LPC
 Test Date: 2021-12-22

γ Range: 0 - 120DEG
 γ Interval: 1.0DEG
 Test System: EVERFINE GO-2000B_V1 SYSTEM V2.0.362
 Humidity: 65.0%
 Test Distance: 9.200m [K=1.0000]
 Remarks:

ISOLUX DIAGRAM

Test:U:24.00V I:0.2331A P:5.594W PF:1.000 Freq:50.00Hz Lamp Flux:11.6674x1 lm		
NAME: SF15-24V-3528-72-B	TYPE: 硅胶	WEIGHT:
SPEC.:	DIM.: 21mm*11.5mm	SERIAL No.:2021122203
MFR.: OLYMPIA	SUR.:1*0.0115	Shielding Angle:



C Range: 0 - 360DEG
C Interval: 30.0DEG
Test Speed: HIGH
Temperature:25.3DEG
Operators:LPC
Test Date:2021-12-22

γ Range: 0 - 120DEG
 γ Interval: 1.0DEG
Test System:EVERFINE GO-2000B_V1 SYSTEM V2.0.362
Humidity:65.0%
Test Distance:9.200m [K=1.0000]
Remarks:

LED Avg.L Report

Test:U:24.00V I:0.2331A P:5.594W PF:1.000 Freq:50.00Hz Lamp Flux:11.6674x1 lm		
NAME: SF15-24V-3528-72-B	TYPE:硅胶	WEIGHT:
SPEC.:	DIM.: 21mm*11.5mm	SERIAL No.:2021122203
MFR.: OLYMPIA	SUR.:1*0.0115	Shielding Angle:

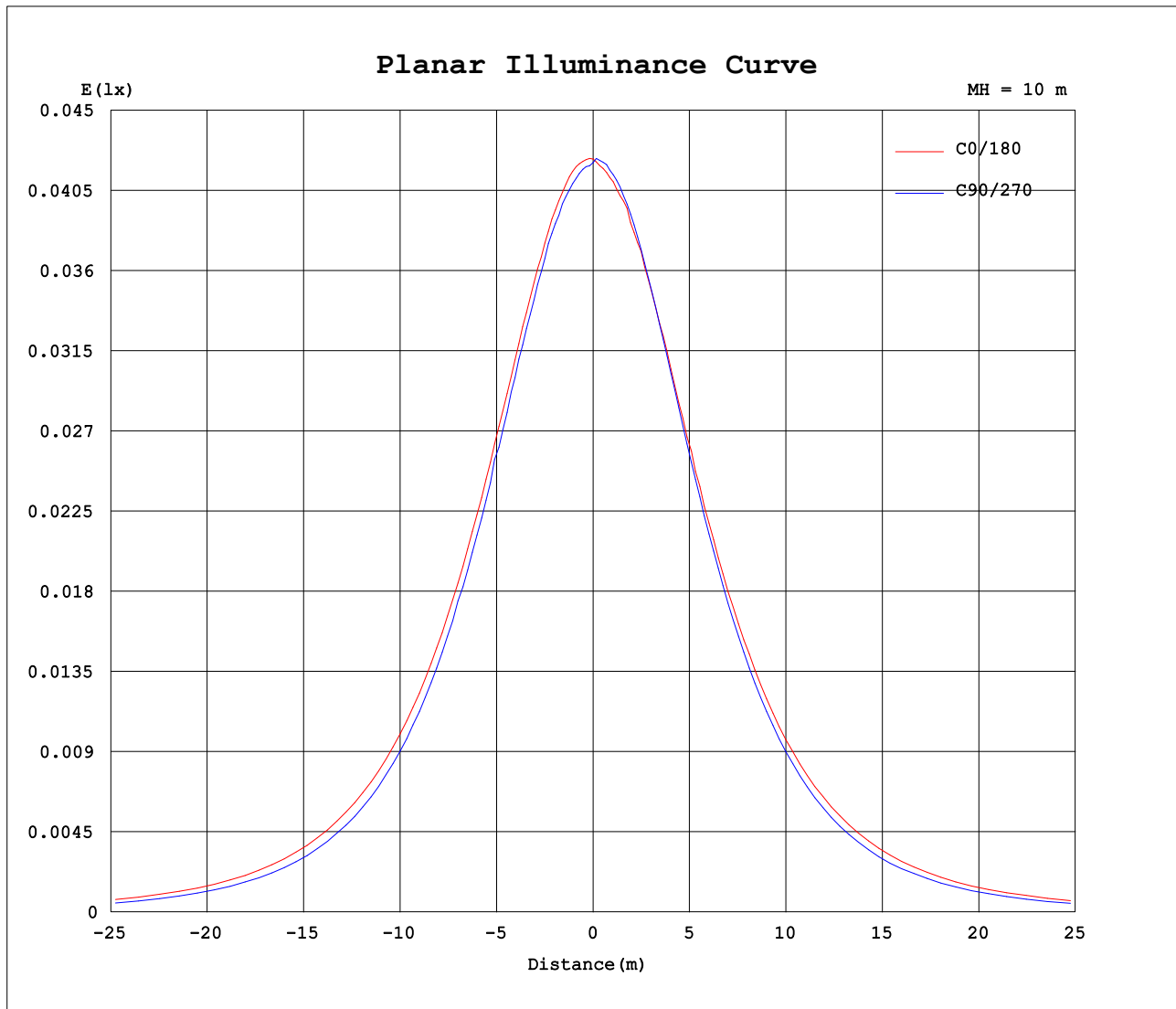
AvgL	cd/m2
L_0~180 (65) av	309
L_0~180 (75) av	274
L_0~180 (85) av	233
L_90~270 (65) av	243
L_90~270 (75) av	168
L_90~270 (85) av	0
L_45 (65) av	306
L_45 (75) av	270
L_45 (85) av	208

Standard: GB/T 29293-2012

C Range: 0 - 360DEG
C Interval: 30.0DEG
Test Speed: HIGH
Temperature:25.3DEG
Operators:LPC
Test Date:2021-12-22

γ Range: 0 - 120DEG
γ Interval: 1.0DEG
Test System:EVERFINE GO-2000B_V1 SYSTEM V2.0.362
Humidity:65.0%
Test Distance:9.200m [K=1.0000]
Remarks:

Planar Illuminance Curve



C Range: 0 - 360DEG
C Interval: 30.0DEG
Test Speed: HIGH
Temperature: 25.3DEG
Operators: LPC
Test Date: 2021-12-22

γ Range: 0 - 120DEG
 γ Interval: 1.0DEG
Test System: EVERFINE GO-2000B_V1 SYSTEM V2.0.362
Humidity: 65.0%
Test Distance: 9.200m [K=1.0000]
Remarks:

LUMINOUS DISTRIBUTION INTENSITY DATA

Test:U:24.00V I:0.2331A P:5.594W PF:1.000 Freq:50.00Hz Lamp Flux:11.6674x1 lm		
NAME: SF15-24V-3528-72-B	TYPE: 硅胶	WEIGHT:
SPEC.:	DIM.: 21mm*11.5mm	SERIAL No.:2021122203
MFR.: OLYMPIA	SUR.:1*0.0115	Shielding Angle:

Table--1

UNIT: cd

C (DEG) γ (DEG)	0	30	60	90	120	150	180	210	240	270	300	330						
0	4.23	4.24	4.18	4.21	4.17	4.17	4.23	4.24	4.18	4.21	4.17	4.17						
5	4.23	4.20	4.23	4.17	4.16	4.14	4.17	4.22	4.16	4.21	4.16	4.18						
10	4.18	4.15	4.16	4.10	4.13	4.07	4.14	4.16	4.10	4.16	4.13	4.17						
15	4.08	4.06	4.08	3.99	4.02	3.97	4.02	4.06	3.99	4.04	4.01	4.10						
20	3.96	3.91	3.93	3.83	3.87	3.81	3.89	3.92	3.83	3.87	3.89	3.96						
25	3.78	3.73	3.74	3.64	3.68	3.63	3.72	3.74	3.66	3.66	3.67	3.79						
30	3.58	3.54	3.53	3.41	3.47	3.42	3.51	3.54	3.44	3.42	3.45	3.61						
35	3.36	3.32	3.28	3.18	3.23	3.18	3.28	3.30	3.21	3.16	3.20	3.40						
40	3.11	3.07	3.02	2.86	2.97	2.94	3.02	3.04	2.95	2.86	2.94	3.16						
45	2.83	2.78	2.75	2.56	2.68	2.63	2.74	2.76	2.68	2.55	2.69	2.89						
50	2.53	2.49	2.45	2.23	2.38	2.33	2.45	2.46	2.37	2.21	2.44	2.59						
55	2.22	2.18	2.15	1.89	2.07	2.00	2.12	2.14	2.06	1.86	2.13	2.29						
60	1.88	1.85	1.83	1.54	1.73	1.67	1.79	1.79	1.72	1.51	1.81	1.97						
65	1.56	1.52	1.51	1.20	1.40	1.34	1.45	1.46	1.40	1.16	1.49	1.63						
70	1.21	1.18	1.18	0.86	1.06	0.99	1.09	1.11	1.04	0.80	1.16	1.30						
75	0.87	0.85	0.85	0.53	0.71	0.65	0.76	0.75	0.69	0.47	0.83	0.97						
80	0.54	0.51	0.53	0.23	0.40	0.35	0.43	0.44	0.37	0.18	0.49	0.63						
85	0.27	0.23	0.24	0.00	0.16	0.12	0.20	0.20	0.12	0.00	0.20	0.33						
90	0.10	0.05	0.07	0.00	0.04	0.02	0.03	0.05	0.00	0.00	0.00	0.13						
95	0.03	0.00	0.03	0.00	0.03	0.01	0.00	0.02	0.00	0.00	0.00	0.03						
100	0.01	0.00	0.02	0.00	0.02	0.01	0.00	0.01	0.00	0.00	0.00	0.00						
105	0.01	0.00	0.02	0.01	0.02	0.01	0.00	0.01	0.00	0.00	0.00	0.00						
110	0.01	0.00	0.01	0.01	0.02	0.01	0.00	0.01	0.00	0.00	0.00	0.00						
115	0.01	0.00	0.01	0.01	0.02	0.01	0.00	0.01	0.00	0.00	0.00	0.00						
120	0.00	0.00	0.01	0.01	0.02	0.01	0.00	0.00	0.00	0.00	0.00	0.00						
125	0.00	0.00	0.00	0.00	0.00	0.00	0.00	0.00	0.00	0.00	0.00	0.00						
130	0.00	0.00	0.00	0.00	0.00	0.00	0.00	0.00	0.00	0.00	0.00	0.00						
135	0.00	0.00	0.00	0.00	0.00	0.00	0.00	0.00	0.00	0.00	0.00	0.00						
140	0.00	0.00	0.00	0.00	0.00	0.00	0.00	0.00	0.00	0.00	0.00	0.00						
145	0.00	0.00	0.00	0.00	0.00	0.00	0.00	0.00	0.00	0.00	0.00	0.00						
150	0.00	0.00	0.00	0.00	0.00	0.00	0.00	0.00	0.00	0.00	0.00	0.00						
155	0.00	0.00	0.00	0.00	0.00	0.00	0.00	0.00	0.00	0.00	0.00	0.00						
160	0.00	0.00	0.00	0.00	0.00	0.00	0.00	0.00	0.00	0.00	0.00	0.00						
165	0.00	0.00	0.00	0.00	0.00	0.00	0.00	0.00	0.00	0.00	0.00	0.00						
170	0.00	0.00	0.00	0.00	0.00	0.00	0.00	0.00	0.00	0.00	0.00	0.00						
175	0.00	0.00	0.00	0.00	0.00	0.00	0.00	0.00	0.00	0.00	0.00	0.00						
180	0.00	0.00	0.00	0.00	0.00	0.00	0.00	0.00	0.00	0.00	0.00	0.00						

C Range: 0 - 360DEG
C Interval: 30.0DEG
Test Speed: HIGH
Temperature:25.3DEG
Operators:LPC
Test Date:2021-12-22

γ Range: 0 - 120DEG
γ Interval: 1.0DEG
Test System:EVERFINE GO-2000B_V1 SYSTEM V2.0.362
Humidity:65.0%
Test Distance:9.200m [K=1.0000]
Remarks:

Photometric Data Table [cd]

G/C	0.0	30.0	60.0	90.0	120.0	150.0	180.0	210.0	240.0	270.0
0.0	4.226	4.242	4.176	4.206	4.166	4.166	4.226	4.242	4.176	4.206
3.0	4.232	4.231	4.241	4.186	4.166	4.146	4.191	4.237	4.171	4.227
6.0	4.227	4.180	4.217	4.156	4.163	4.136	4.166	4.217	4.145	4.207
9.0	4.192	4.141	4.186	4.126	4.141	4.081	4.141	4.172	4.112	4.172
12.0	4.156	4.091	4.141	4.071	4.096	4.025	4.076	4.121	4.081	4.121
15.0	4.081	4.055	4.076	3.990	4.016	3.970	4.020	4.056	3.985	4.041
18.0	4.011	3.980	3.991	3.900	3.925	3.879	3.945	3.986	3.905	3.946
21.0	3.920	3.885	3.895	3.814	3.825	3.774	3.864	3.880	3.809	3.835
24.0	3.820	3.779	3.785	3.679	3.719	3.663	3.749	3.790	3.689	3.714
27.0	3.714	3.663	3.659	3.592	3.599	3.573	3.658	3.659	3.583	3.569
30.0	3.584	3.538	3.529	3.407	3.468	3.417	3.508	3.539	3.437	3.423
33.0	3.458	3.407	3.383	3.256	3.323	3.276	3.372	3.403	3.301	3.272
36.0	3.312	3.261	3.232	3.090	3.182	3.126	3.231	3.252	3.171	3.096
39.0	3.162	3.110	3.076	2.919	3.021	2.970	3.085	3.096	3.015	2.921
42.0	2.996	2.955	2.911	2.744	2.855	2.804	2.919	2.936	2.849	2.745
45.0	2.830	2.784	2.750	2.558	2.684	2.628	2.739	2.760	2.678	2.549
48.0	2.649	2.608	2.574	2.361	2.508	2.452	2.562	2.584	2.497	2.348
51.0	2.468	2.432	2.393	2.160	2.323	2.266	2.376	2.393	2.311	2.137
54.0	2.277	2.236	2.212	1.959	2.127	2.065	2.191	2.207	2.125	1.936
57.0	2.086	2.045	2.031	1.748	1.941	1.874	1.984	2.001	1.924	1.704
60.0	1.880	1.849	1.835	1.542	1.734	1.668	1.793	1.795	1.723	1.513
63.0	1.684	1.648	1.639	1.336	1.544	1.487	1.577	1.594	1.517	1.297
66.0	1.488	1.457	1.448	1.130	1.333	1.261	1.391	1.388	1.321	1.081
69.0	1.277	1.246	1.247	0.9291	1.126	1.055	1.165	1.182	1.110	0.8751
72.0	1.071	1.045	1.046	0.7181	0.9205	0.8436	0.9541	0.9656	0.8990	0.6691
75.0	0.8701	0.8487	0.8450	0.5322	0.7144	0.6528	0.7582	0.7546	0.6929	0.4681
78.0	0.6642	0.6328	0.6490	0.3462	0.5183	0.4518	0.5572	0.5634	0.4870	0.2970
81.0	0.4830	0.4467	0.4680	0.1754	0.3423	0.2861	0.3714	0.3824	0.3010	0.1411
84.0	0.3172	0.2709	0.2971	0.0398	0.1916	0.1604	0.2208	0.2417	0.1504	0.0205
87.0	0.1964	0.1355	0.1562	0	0.0908	0.0552	0.1052	0.1310	0.0349	0
90.0	0.1008	0.0501	0.0656	0	0.0403	0.0150	0.0348	0.0505	0	0
93.0	0.0504	0	0.0352	0	0.0302	0.0101	0	0.0201	0	0
96.0	0.0202	0	0.0202	0	0.0251	0.0101	0	0.0101	0	0
99.0	0.0150	0	0.0201	0	0.0152	0.0101	0	0.0050	0	0
102.0	0.0050	0	0.0201	0.0100	0.0151	0.0101	0	0.0050	0	0
105.0	0.0050	0	0.0201	0.0050	0.0151	0.0101	0	0.0050	0	0
108.0	0.0050	0	0.0101	0.0050	0.0151	0.0101	0	0.0050	0	0
111.0	0.0050	0	0.0101	0.0050	0.0151	0.0101	0	0.0050	0	0
114.0	0.0050	0	0.0101	0.0050	0.0151	0.0101	0	0.0050	0	0
117.0	0.0050	0	0.0101	0.0050	0.0151	0.0101	0	0.0050	0	0
120.0	0	0	0.0101	0.0050	0.0151	0.0050	0	0	0	0
G/C	300.0	330.0								
0.0	4.166	4.166								
3.0	4.166	4.186								
6.0	4.161	4.179								
9.0	4.136	4.171								
12.0	4.076	4.151								
15.0	4.005	4.101								
18.0	3.925	3.976								
21.0	3.829	3.925								
24.0	3.729	3.830								
27.0	3.583	3.719								
30.0	3.447	3.609								
33.0	3.321	3.488								
36.0	3.166	3.353								
39.0	3.010	3.202								
42.0	2.849	3.046								
45.0	2.693	2.890								
48.0	2.537	2.714								
51.0	2.381	2.539								
54.0	2.196	2.353								
57.0	2.000	2.167								
60.0	1.809	1.966								
63.0	1.618	1.770								
66.0	1.432	1.584								
69.0	1.226	1.373								
72.0	1.019	1.167								
75.0	0.8286	0.9655								
78.0	0.6125	0.7545								
81.0	0.4365	0.5585								
84.0	0.2457	0.3825								
87.0	0.1100	0.2266								
90.0	0	0.1259								

C Range: 0 - 360DEG
 C Interval: 30.0DEG
 Test Speed: HIGH
 Temperature: 25.3DEG
 Operators: LPC
 Test Date: 2021-12-22

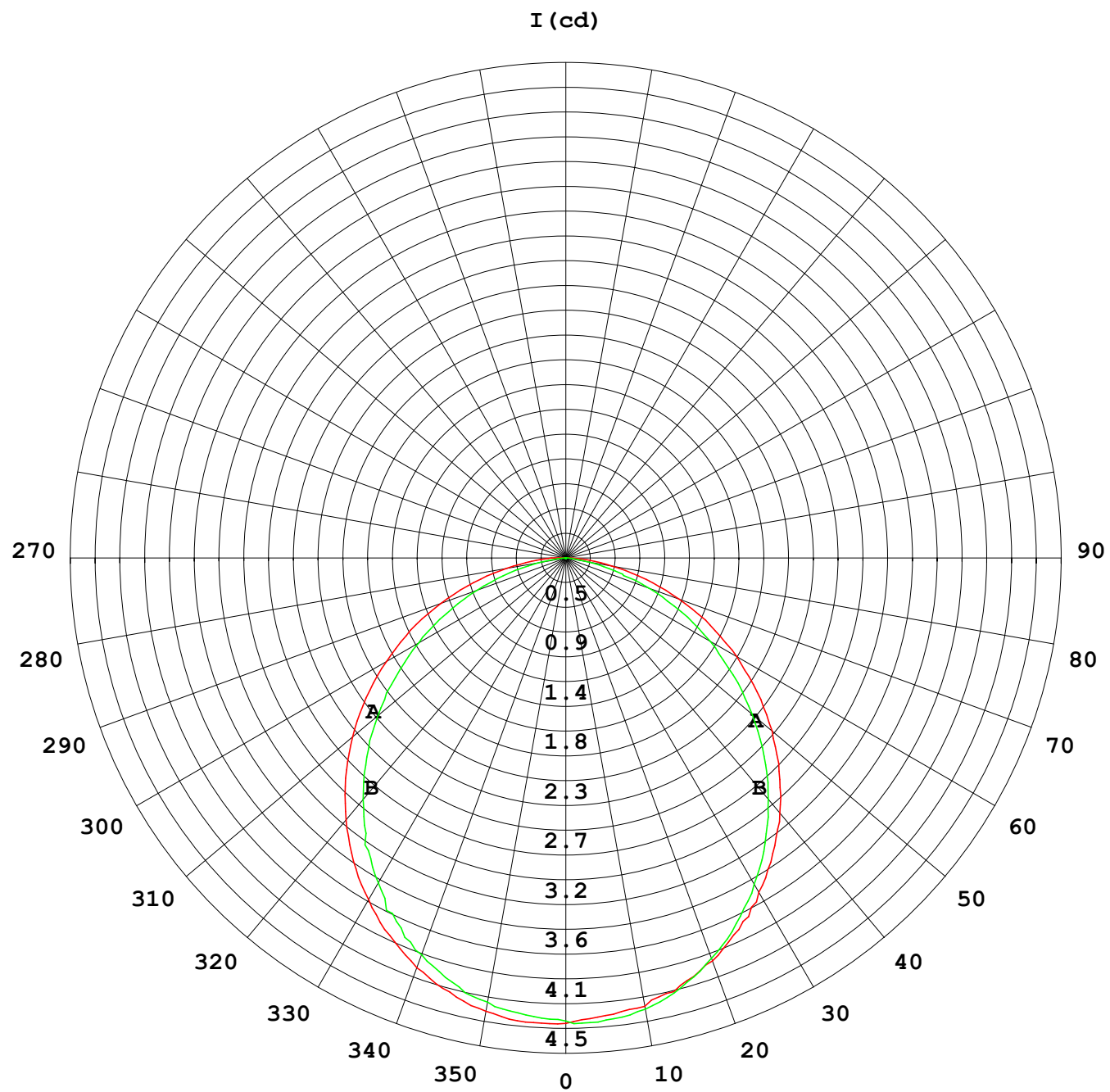
γ Range: 0 - 120DEG
 γ Interval: 1.0DEG
 Test System: EVERFINE GO-2000B_V1 SYSTEM V2.0.362
 Humidity: 65.0%
 Test Distance: 9.200m [K=1.0000]
 Remarks:

Photometric Data Table [cd]

93.0	0	0.0604
96.0	0	0.0152
99.0	0	0.0000
102.0	0	0
105.0	0	0
108.0	0	0
111.0	0	0
114.0	0	0
117.0	0	0
120.0	0	0

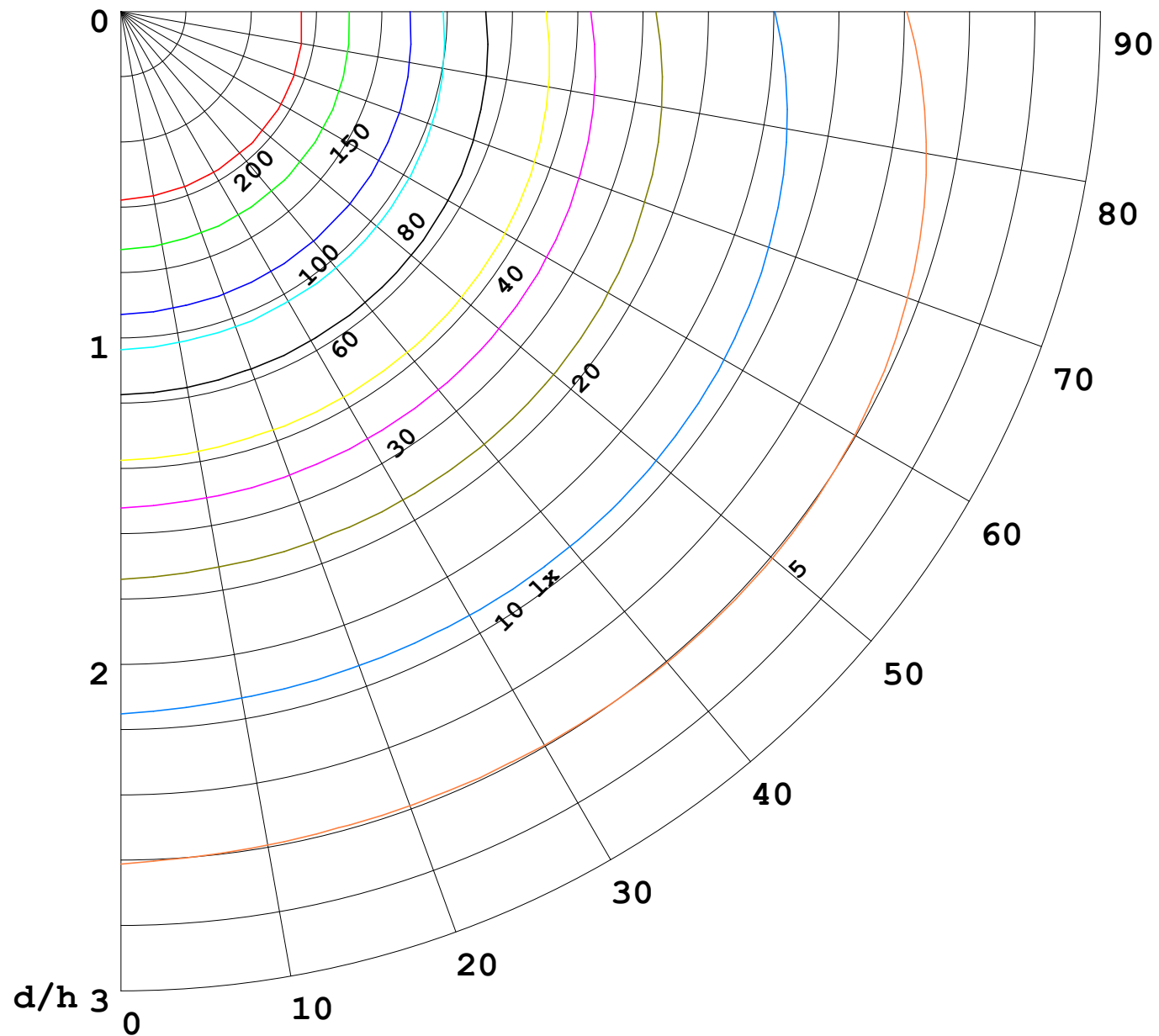
C Range: 0 - 360DEG
C Interval: 30.0DEG
Test Speed: HIGH
Temperature: 25.3DEG
Operators: LPC
Test Date: 2021-12-22

γ Range: 0 - 120DEG
γ Interval: 1.0DEG
Test System: EVERFINE GO-2000B_V1 SYSTEM V2.0.362
Humidity: 65.0%
Test Distance: 9.200m [K=1.0000]
Remarks:



1000 lm

$\kappa = 1$



F = 5000 lm
 K = 0.7
 Hcc = 0.0 m
 Hfc = 0.0 m
 Eave = 100 lx

	Pcc	Pw	Pfc
—	70	50	30
—	50	30	20

