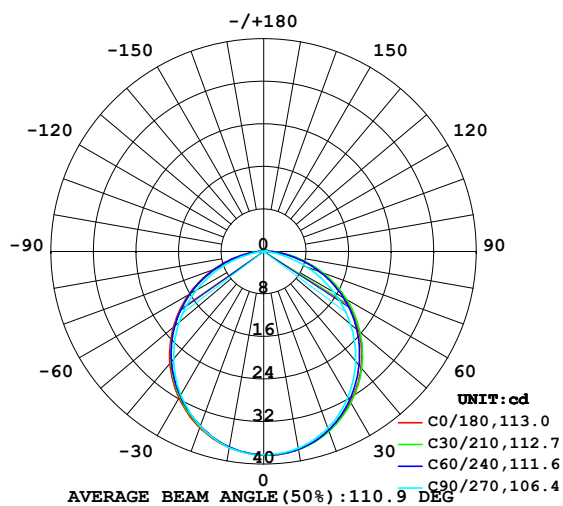


LUMINAIRE PHOTOMETRIC TEST REPORT

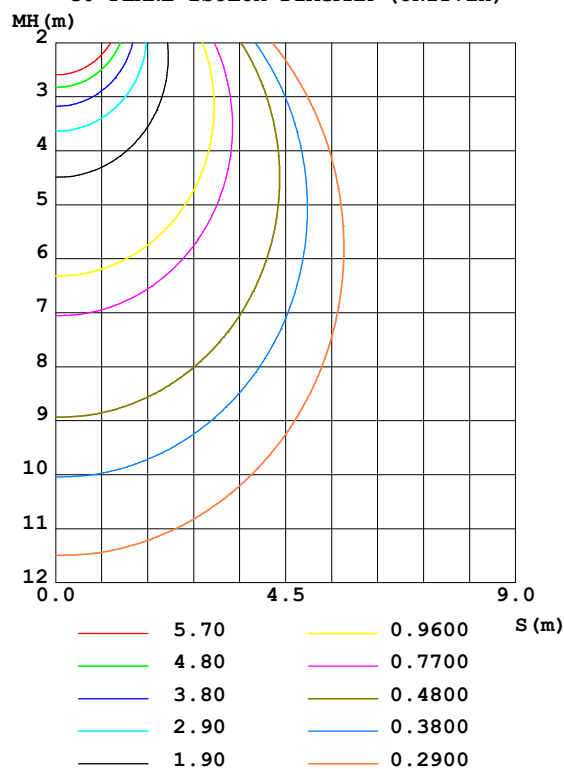
Test:U:24.00V I:0.2550A P:6.120W PF:1.000 Freq:50.00Hz Lamp Flux:109.843x1 lm		
NAME: SF15-24V-3528-72-2200-80	TYPE: 硅胶	WEIGHT:
SPEC.:	DIM.: 21mm*11.5mm	SERIAL No.:2021122106
MFR.: OLYMPIA	SUR.:1*0.0115	Shielding Angle:

DATA OF LAMP		PHOTOMETRIC DATA Eff: 17.95 lm/W			
MODEL	3528	I _{max} (cd)	38.31	S/MH (C0/180)	1.24
NOMINAL POWER (W)	5	LOR (%)	100.0	S/MH (C90/270)	1.22
RATED VOLTAGE (V)	24	TOTAL FLUX (lm)	109.84	η UP, DN (C0-180)	0.8, 49.6
NOMINAL FLUX (lm)	109.843	CIE CLASS	DIRECT	η UP, DN (C180-360)	0.5, 49.1
LAMPS INSIDE	1	η up (%)	1.3	CIBSE SHR NOM	1.25
TEST VOLTAGE (V)	24	η down (%)	98.7	CIBSE SHR MAX	1.35

LUMINOUS INTENSITY DISTRIBUTION DIAGRAM



C0 PLANE ISOLUX DIAGRAM (UNIT:lx)



C Range: 0 - 360DEG
 C Interval: 30.0DEG
 Test Speed: HIGH
 Temperature: 25.3DEG
 Operators: LPC
 Test Date: 2021-12-21

γ Range: 0 - 120DEG
 γ Interval: 1.0DEG
 Test System: EVERFINE GO-2000B_V1 SYSTEM V2.0.362
 Humidity: 65.0%
 Test Distance: 9.200m [K=1.0000]
 Remarks:

ZONAL FLUX DIAGRAM

ZONAL FLUX DIAGRAM:

γ	C0	C45	C90	C135	C180	C225	C270	C315	γ	Φ zone	Φ total	%lum, lamp
10	37.78	37.80	37.57	37.32	37.45	37.36	37.45	37.77	0- 10	3.619	3.619	3.29,3.29
20	35.86	35.85	35.33	34.99	35.24	34.98	34.92	35.68	10- 20	10.34	13.95	12.7,12.7
30	32.71	32.57	31.71	31.47	31.85	31.49	31.18	32.39	20- 30	15.57	29.52	26.9,26.9
40	28.51	28.28	26.93	26.99	27.44	27.08	26.39	28.19	30- 40	18.67	48.19	43.9,43.9
50	23.44	23.25	21.32	21.69	22.18	21.85	20.77	23.37	40- 50	19.30	67.49	61.4,61.4
60	17.77	17.65	15.13	15.79	16.32	15.99	14.60	17.82	50- 60	17.42	84.91	77.3,77.3
70	11.69	11.58	8.683	9.521	10.08	9.782	8.162	11.85	60- 70	13.31	98.22	89.4,89.4
80	5.680	5.566	2.749	3.704	4.242	3.884	2.175	5.824	70- 80	7.697	105.9	96.4,96.4
90	1.515	1.204	0.3578	0.7087	0.8377	0.5984	0.1747	1.239	80- 90	2.482	108.4	98.7,98.7
100	0.4838	0.5313	0.4021	0.5936	0.3541	0.4088	0.1960	0.3689	90-100	0.5987	109.0	99.2,99.2
110	0.4948	0.4697	0.4674	0.5716	0.1932	0.4406	0.2927	0.3667	100-110	0.4587	109.5	99.6,99.6
120	0.5327	0.1145	0.1993	0.6131	0.0322	0.0737	0.0498	0.2588	110-120	0.3716	109.8	100,100
130	0	0	0	0	0	0	0	0	120-130	0.0141	109.8	100,100
140	0	0	0	0	0	0	0	0	130-140	0	109.8	100,100
150	0	0	0	0	0	0	0	0	140-150	0	109.8	100,100
160	0	0	0	0	0	0	0	0	150-160	0	109.8	100,100
170	0	0	0	0	0	0	0	0	160-170	0	109.8	100,100
180	0	0	0	0	0	0	0	0	170-180	0	109.8	100,100
DEG	LUMINOUS INTENSITY:cd									UNIT:lm		

Conical surface Flux(90deg): 57.917 lm

%lum = 52.7%

%lamp = 52.7%

Conical surface Flux(120deg): 84.908 lm

%lum = 77.3%

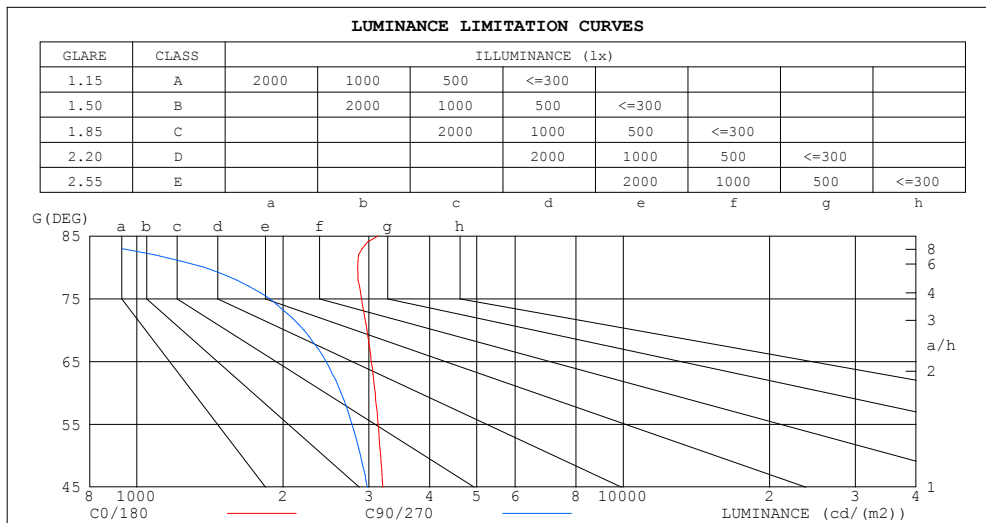
%lamp = 77.3%

C Range: 0 - 360DEG
 C Interval: 30.0DEG
 Test Speed: HIGH
 Temperature:25.3DEG
 Operators:LPC
 Test Date:2021-12-21

γ Range: 0 - 120DEG
 γ Interval: 1.0DEG
 Test System:EVERFINE GO-2000B_V1 SYSTEM V2.0.362
 Humidity:65.0%
 Test Distance:9.200m [K=1.0000]
 Remarks:

LUMINANCE LIMITATION CURVES

Test:U:24.00V I:0.2550A P:6.120W PF:1.000 Freq:50.00Hz Lamp Flux:109.843x1 lm		
NAME: SF15-24V-3528-72-2200-80	TYPE:硅胶	WEIGHT:
SPEC.:	DIM.: 21mm*11.5mm	SERIAL No.:2021122106
MFR.: OLYMPIA	SUR.:1*0.0115	Shielding Angle:



LUMINANCE cd/(m2)		
G (DEG)	C0/180	C90/270
85	3134	605
80	2844	1377
75	2900	1876
70	2972	2208
65	3033	2449
60	3091	2631
55	3134	2771
50	3171	2884
45	3206	2976

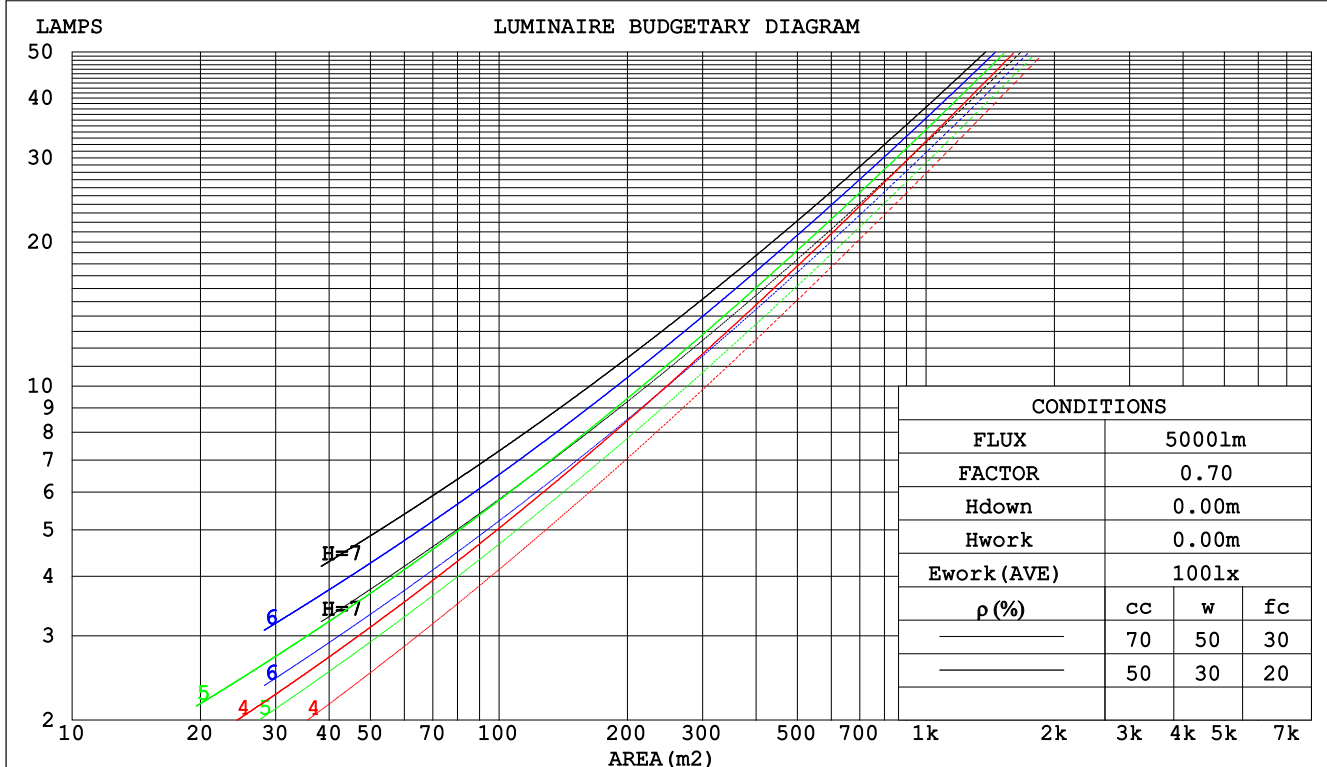
C Range: 0 - 360DEG
C Interval: 30.0DEG
Test Speed: HIGH
Temperature:25.3DEG
Operators:LPC
Test Date:2021-12-21

γ Range: 0 - 120DEG
 γ Interval: 1.0DEG
Test System:EVERFINE GO-2000B_V1 SYSTEM V2.0.362
Humidity:65.0%
Test Distance:9.200m [K=1.0000]
Remarks:

CU AND LUMINAIRE BUDGETARY ESTIMATE DIAGRAM

Test:U:24.00V I:0.2550A P:6.120W PF:1.000 Freq:50.00Hz Lamp Flux:109.843x1 lm		
NAME: SF15-24V-3528-72-2200-80	TYPE: 硅胶	WEIGHT:
SPEC.:	DIM.: 21mm*11.5mm	SERIAL No.:2021122106
MFR.: OLYMPIA	SUR.:1*0.0115	Shielding Angle:

pcc	80%			70%			50%			30%			10%			0
pw	50%	30%	10%	50%	30%	10%	50%	30%	10%	50%	30%	10%	50%	30%	10%	0
pfc	20%			20%			20%			20%			20%			0
RCR	RCR:Room Cavity Ratio						Coefficients of Utilization(CU)									
0.0	1.19	1.19	1.19	1.16	1.16	1.16	1.10	1.10	1.10	1.05	1.05	1.05	1.01	1.01	1.01	.99
1.0	1.03	.99	.95	1.01	.97	.93	.96	.93	.90	.92	.90	.87	.89	.86	.84	.82
2.0	.90	.83	.77	.88	.82	.76	.84	.79	.74	.81	.76	.72	.77	.74	.71	.68
3.0	.79	.71	.64	.77	.70	.63	.74	.68	.62	.71	.66	.61	.68	.64	.60	.57
4.0	.70	.61	.54	.68	.60	.54	.66	.59	.53	.63	.57	.52	.61	.56	.51	.49
5.0	.62	.53	.47	.61	.53	.46	.59	.51	.46	.57	.50	.45	.55	.49	.44	.42
6.0	.56	.47	.41	.55	.47	.40	.53	.46	.40	.51	.45	.40	.50	.44	.39	.37
7.0	.51	.42	.36	.50	.42	.36	.48	.41	.35	.47	.40	.35	.45	.39	.35	.33
8.0	.46	.38	.32	.46	.38	.32	.44	.37	.32	.43	.36	.31	.42	.36	.31	.29
9.0	.43	.34	.29	.42	.34	.29	.41	.34	.28	.40	.33	.28	.38	.32	.28	.26
10.0	.39	.31	.26	.39	.31	.26	.38	.31	.26	.37	.30	.26	.36	.30	.25	.24



C Range: 0 - 360DEG
 C Interval: 30.0DEG
 Test Speed: HIGH
 Temperature:25.3DEG
 Operators:LPC
 Test Date:2021-12-21

γ Range: 0 - 120DEG
 γ Interval: 1.0DEG
 Test System:EVERFINE GO-2000B_V1 SYSTEM V2.0.362
 Humidity:65.0%
 Test Distance:9.200m [K=1.0000]
 Remarks:

WEC AND CCEC

Test:U:24.00V I:0.2550A P:6.120W PF:1.000 Freq:50.00Hz Lamp Flux:109.843x1 lm		
NAME: SF15-24V-3528-72-2200-80	TYPE: 硅胶	WEIGHT:
SPEC.:	DIM.: 21mm*11.5mm	SERIAL No.:2021122106
MFR.: OLYMPIA	SUR.:1*0.0115	Shielding Angle:

pcc	80%			70%			50%			30%			10%			0	
pw	50%	30%	10%	50%	30%	10%	50%	30%	10%	50%	30%	10%	50%	30%	10%	0	
pfc	20%			20%			20%			20%			20%			0	
RCR	RCR:Room Cavity Ratio						Wall Exitance Coeffcients(WEC)										
0.0																	
1.0	.313	.178	.056	.306	.175	.055	.292	.167	.053	.279	.161	.052	.267	.155	.050		
2.0	.293	.161	.049	.287	.158	.049	.274	.152	.047	.263	.147	.046	.252	.143	.045		
3.0	.271	.144	.043	.265	.142	.043	.254	.138	.042	.244	.133	.041	.234	.130	.040		
4.0	.249	.130	.038	.244	.128	.038	.234	.124	.037	.225	.121	.037	.217	.118	.036		
5.0	.230	.117	.034	.226	.116	.034	.217	.113	.033	.209	.110	.033	.201	.108	.032		
6.0	.214	.107	.031	.209	.106	.030	.202	.103	.030	.194	.101	.030	.188	.099	.029		
7.0	.199	.098	.028	.195	.097	.028	.188	.095	.027	.182	.093	.027	.175	.091	.027		
8.0	.186	.091	.025	.182	.090	.025	.176	.088	.025	.170	.086	.025	.165	.084	.025		
9.0	.174	.084	.023	.171	.083	.023	.165	.082	.023	.160	.080	.023	.155	.079	.023		
10.0	.163	.078	.022	.161	.078	.022	.156	.076	.021	.151	.075	.021	.146	.074	.021		

pcc	80%			70%			50%			30%			10%			0
pw	50%	30%	10%	50%	30%	10%	50%	30%	10%	50%	30%	10%	50%	30%	10%	0
pfc	20%			20%			20%			20%			20%			0
RCR	RCR:Room Cavity Ratio						Ceiling Cavity Exitance Coefficients(CCEC)									
0.0	.200	.200	.200	.171	.171	.171	.117	.117	.117	.067	.067	.067	.021	.021	.021	
1.0	.191	.166	.144	.163	.143	.124	.112	.098	.086	.064	.057	.050	.021	.018	.016	
2.0	.183	.142	.108	.156	.122	.093	.107	.085	.065	.062	.049	.038	.020	.016	.012	
3.0	.175	.125	.084	.150	.107	.073	.103	.075	.051	.059	.044	.030	.019	.014	.010	
4.0	.167	.111	.069	.143	.096	.060	.099	.067	.042	.057	.039	.025	.018	.013	.008	
5.0	.160	.101	.057	.137	.087	.050	.094	.061	.035	.055	.036	.021	.018	.012	.007	
6.0	.153	.093	.049	.131	.080	.043	.090	.056	.030	.052	.033	.018	.017	.011	.006	
7.0	.146	.086	.044	.125	.074	.038	.087	.052	.027	.050	.031	.016	.016	.010	.005	
8.0	.139	.080	.039	.120	.069	.034	.083	.049	.024	.048	.029	.014	.016	.009	.005	
9.0	.133	.075	.036	.115	.065	.031	.079	.046	.022	.046	.027	.013	.015	.009	.004	
10.0	.127	.071	.033	.110	.061	.029	.076	.043	.020	.044	.026	.012	.014	.008	.004	

C Range: 0 - 360DEG
 C Interval: 30.0DEG
 Test Speed: HIGH
 Temperature:25.3DEG
 Operators:LPC
 Test Date:2021-12-21

γ Range: 0 - 120DEG
 γ Interval: 1.0DEG
 Test System:EVERFINE GO-2000B_V1 SYSTEM V2.0.362
 Humidity:65.0%
 Test Distance:9.200m [K=1.0000]
 Remarks:

UGR(Unified Glare Rating) Table

Test:U:24.00V I:0.2550A P:6.120W PF:1.000 Freq:50.00Hz Lamp Flux:109.843x1 lm											
NAME: SF15-24V-3528-72-2200-80						TYPE:硅胶			WEIGHT:		
SPEC.:						DIM.: 21mm*11.5mm			SERIAL No.:2021122106		
MFR.: OLYMPIA						SUR.:1*0.0115			Shielding Angle:		
ceiling/cavity	0.7	0.7	0.5	0.5	0.3	0.7	0.7	0.5	0.5	0.3	
walls	0.5	0.3	0.5	0.3	0.3	0.5	0.3	0.5	0.3	0.3	
working plane	0.2	0.2	0.2	0.2	0.2	0.2	0.2	0.2	0.2	0.2	
Room dimensions		Viewed crosswise					Viewed endwise				
x = 2H y = 2H	24.7	26.2	25.0	26.4	26.6	24.2	25.7	24.5	25.9	26.1	
	3H	26.4	27.7	26.7	28.0	28.3	25.6	26.9	25.9	27.2	27.5
	4H	27.1	28.4	27.4	28.7	29.0	26.0	27.4	26.4	27.6	27.9
	6H	27.6	28.9	28.0	29.2	29.5	26.3	27.5	26.7	27.8	28.1
	8H	27.9	29.1	28.2	29.4	29.7	26.3	27.5	26.7	27.8	28.2
	12H	28.0	29.2	28.4	29.5	29.9	26.3	27.5	26.7	27.8	28.1
4H	2H	25.3	26.6	25.6	26.9	27.2	24.9	26.3	25.3	26.5	26.8
	3H	27.2	28.4	27.6	28.7	29.0	26.6	27.7	26.9	28.0	28.4
	4H	28.1	29.1	28.4	29.5	29.8	27.2	28.3	27.6	28.6	29.0
	6H	28.8	29.7	29.2	30.1	30.5	27.6	28.6	28.0	28.9	29.3
	8H	29.1	29.9	29.5	30.3	30.8	27.7	28.6	28.1	29.0	29.4
	12H	29.3	30.1	29.8	30.5	31.0	27.7	28.5	28.2	28.9	29.4
8H	4H	28.4	29.2	28.8	29.6	30.0	27.6	28.5	28.1	28.9	29.3
	6H	29.3	30.0	29.7	30.4	30.9	28.3	29.0	28.7	29.4	29.9
	8H	29.7	30.3	30.2	30.8	31.3	28.5	29.1	28.9	29.6	30.0
	12H	30.1	30.6	30.5	31.1	31.6	28.6	29.1	29.1	29.6	30.1
12H	4H	28.4	29.2	28.8	29.6	30.0	27.7	28.5	28.1	28.9	29.3
	6H	29.3	30.0	29.8	30.4	30.9	28.4	29.0	28.9	29.5	30.0
	8H	29.8	30.4	30.3	30.8	31.3	28.7	29.2	29.2	29.7	30.2
Variations with the observer position at spacings:											
S = 1.0H	+ 0.1 / - 0.2					+ 0.2 / - 0.2					
1.5H	+ 0.2 / - 0.3					+ 0.2 / - 0.4					
2.0H	+ 0.1 / - 0.3					+ 0.2 / - 0.5					

CIE Pub.117, 109.8 lm Total Lamp Luminous Flux Correct (8log(F/F0) = -7.7)

C Range: 0 - 360DEG
C Interval: 30.0DEG
Test Speed: HIGH
Temperature:25.3DEG
Operators:LPC
Test Date:2021-12-21

γ Range: 0 - 120DEG
γ Interval: 1.0DEG
Test System:EVERFINE GO-2000B_V1 SYSTEM V2.0.362
Humidity:65.0%
Test Distance:9.200m [K=1.0000]
Remarks:

UTILIZATION FACTORS TABLE

Test:U:24.00V I:0.2550A P:6.120W PF:1.000 Freq:50.00Hz Lamp Flux:109.843x1 lm		
NAME: SF15-24V-3528-72-2200-80	TYPE: 硅胶	WEIGHT:
SPEC.:	DIM.: 21mm*11.5mm	SERIAL No.:2021122106
MFR.: OLYMPIA	SUR.:1*0.0115	Shielding Angle:

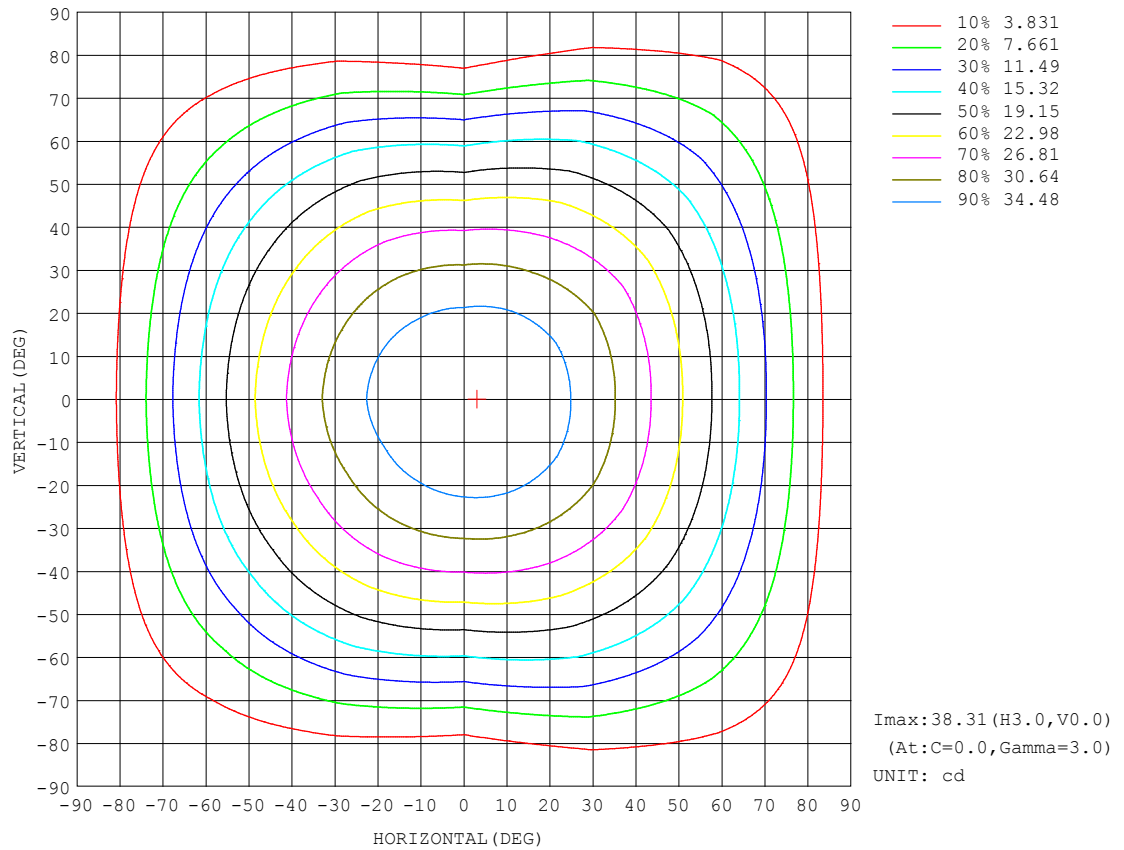
REFLECTANCE										
Ceiling	0.8	0.8	0.8	0.7	0.7	0.7	0.5	0.5	0.5	0
Walls	0.7	0.5	0.3	0.7	0.5	0.3	0.7	0.5	0.3	0
Working plane	0.2	0.2	0.2	0.2	0.2	0.2	0.2	0.2	0.2	0
ROOM INDEX	UTILIZATION FACTORS (PERCENT) $k(RI) \times RCR = 5$									
$k = 0.60$	57	45	38	56	45	38	55	45	38	32
0.80	67	55	48	66	55	48	64	54	47	40
1.00	75	64	57	74	64	56	72	65	56	49
1.25	82	72	65	81	71	64	78	70	63	56
1.50	87	77	70	86	76	70	83	75	69	61
2.00	94	86	79	92	84	78	89	82	77	69
2.50	98	90	84	96	89	83	92	86	81	73
3.00	102	95	89	99	93	88	95	90	86	77
4.00	106	100	95	103	98	94	99	94	91	82
5.00	108	103	99	106	101	97	101	97	94	85
ROOM INDEX	UF (total)									Direct
According to DIN EN 13032-2 2004			Suspended					SHRNOM = 1.25		

C Range: 0 - 360DEG
 C Interval: 30.0DEG
 Test Speed: HIGH
 Temperature: 25.3DEG
 Operators: LPC
 Test Date: 2021-12-21

γ Range: 0 - 120DEG
 γ Interval: 1.0DEG
 Test System: EVERFINE GO-2000B_V1 SYSTEM V2.0.362
 Humidity: 65.0%
 Test Distance: 9.200m [K=1.0000]
 Remarks:

ISOCANDELA DIAGRAM

Test:U:24.00V I:0.2550A P:6.120W PF:1.000 Freq:50.00Hz Lamp Flux:109.843x1 lm		
NAME: SF15-24V-3528-72-2200-80	TYPE: 硅胶	WEIGHT:
SPEC.:	DIM.: 21mm*11.5mm	SERIAL No.:2021122106
MFR.: OLYMPIA	SUR.:1*0.0115	Shielding Angle:

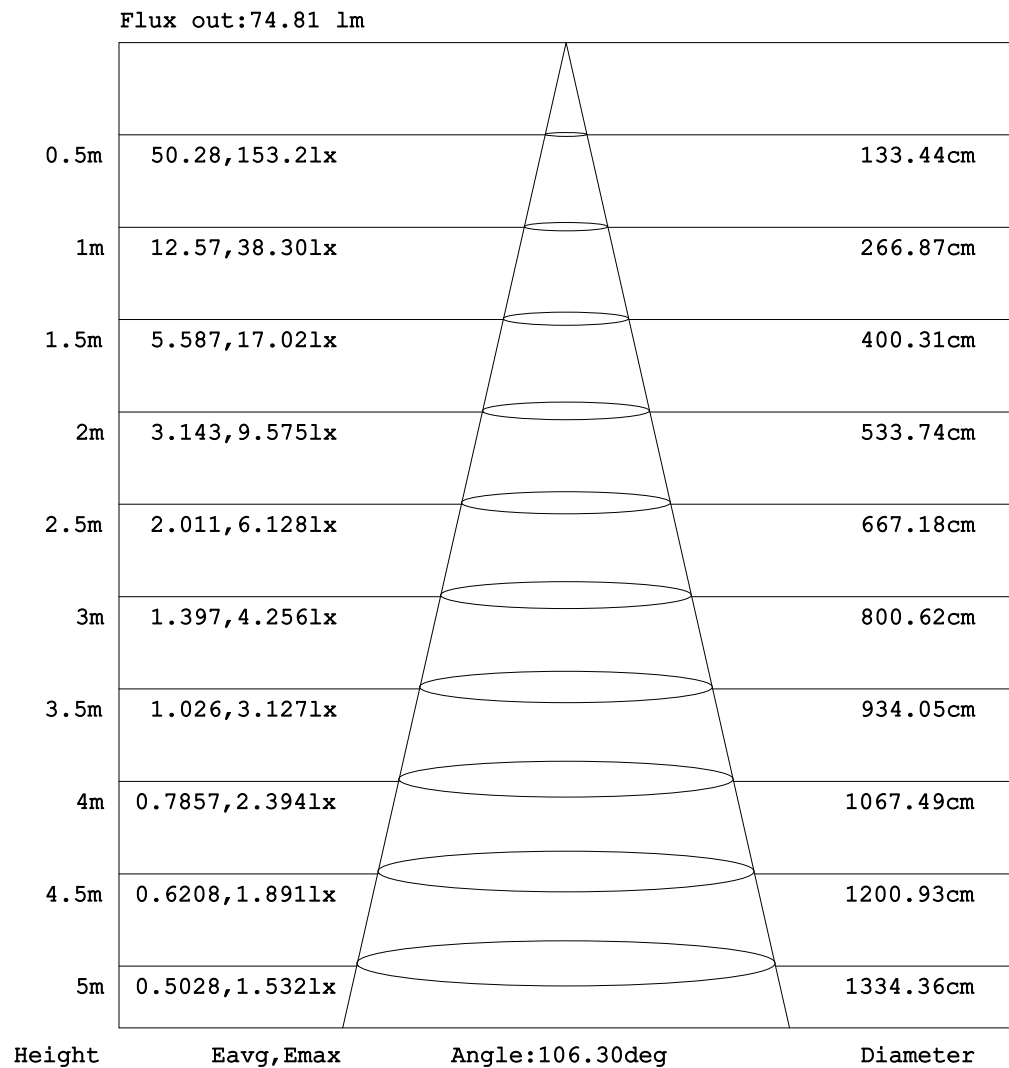


C Range: 0 - 360DEG
C Interval: 30.0DEG
Test Speed: HIGH
Temperature: 25.3DEG
Operators: LPC
Test Date: 2021-12-21

γ Range: 0 - 120DEG
 γ Interval: 1.0DEG
Test System: EVERFINE GO-2000B_V1 SYSTEM V2.0.362
Humidity: 65.0%
Test Distance: 9.200m [K=1.0000]
Remarks:

AAI Figure

Test:U:24.00V I:0.2550A P:6.120W PF:1.000 Freq:50.00Hz Lamp Flux:109.843x1 lm		
NAME: SF15-24V-3528-72-2200-80	TYPE: 硅胶	WEIGHT:
SPEC.:	DIM.: 21mm*11.5mm	SERIAL No.:2021122106
MFR.: OLYMPIA	SUR.:1*0.0115	Shielding Angle:



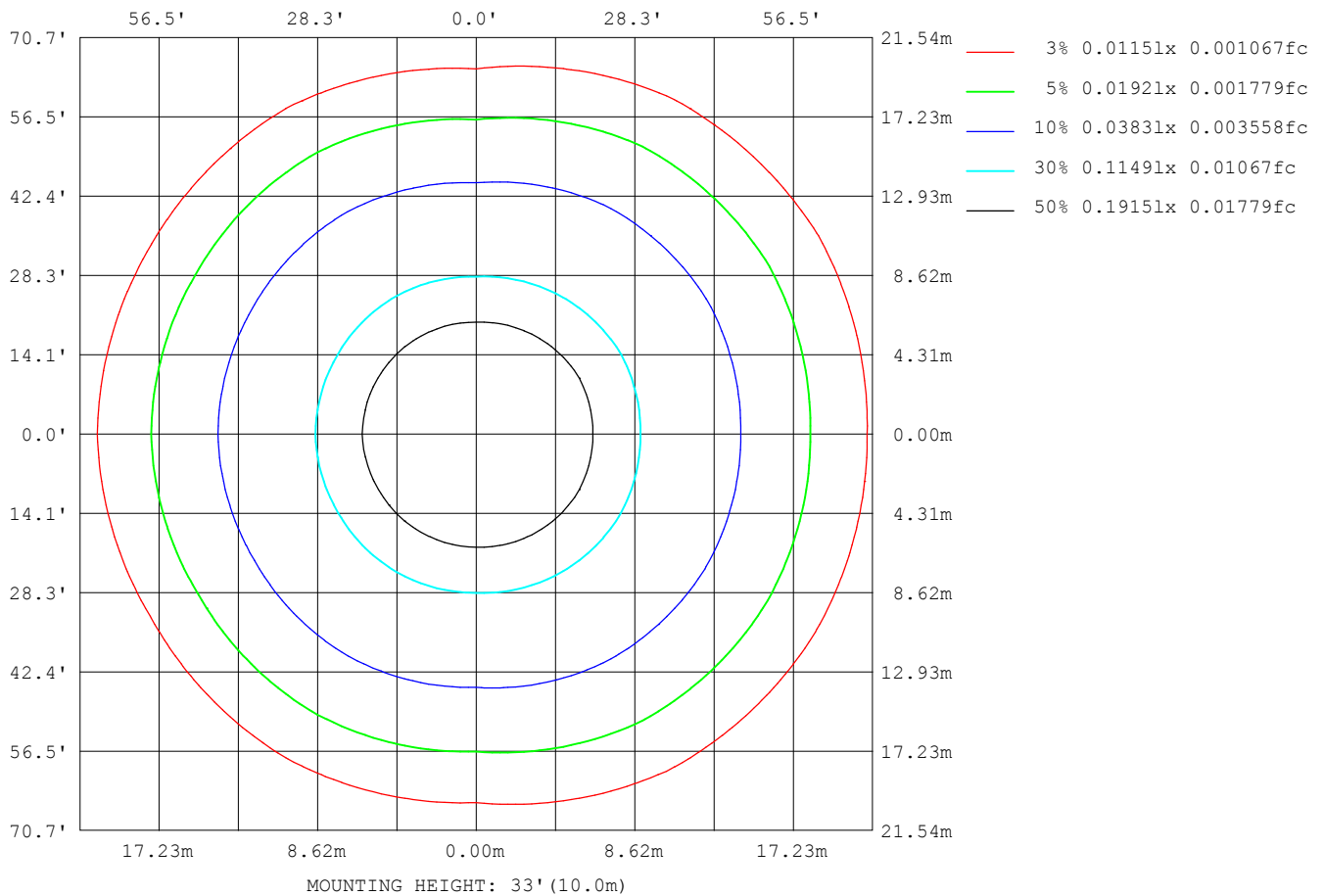
Note: The Curves indicate the illuminated area and the average illumination when the luminaire is at different distance.

C Range: 0 - 360DEG
 C Interval: 30.0DEG
 Test Speed: HIGH
 Temperature: 25.3DEG
 Operators: LPC
 Test Date: 2021-12-21

γ Range: 0 - 120DEG
 γ Interval: 1.0DEG
 Test System: EVERFINE GO-2000B_V1 SYSTEM V2.0.362
 Humidity: 65.0%
 Test Distance: 9.200m [K=1.0000]
 Remarks:

ISOLUX DIAGRAM

Test:U:24.00V I:0.2550A P:6.120W PF:1.000 Freq:50.00Hz Lamp Flux:109.843x1 lm		
NAME: SF15-24V-3528-72-2200-80	TYPE: 硅胶	WEIGHT:
SPEC.:	DIM.: 21mm*11.5mm	SERIAL No.:2021122106
MFR.: OLYMPIA	SUR.:1*0.0115	Shielding Angle:



C Range: 0 - 360DEG
C Interval: 30.0DEG
Test Speed: HIGH
Temperature:25.3DEG
Operators:LPC
Test Date:2021-12-21

γ Range: 0 - 120DEG
 γ Interval: 1.0DEG
Test System:EVERFINE GO-2000B_V1 SYSTEM V2.0.362
Humidity:65.0%
Test Distance:9.200m [K=1.0000]
Remarks:

LED Avg.L Report

Test:U:24.00V I:0.2550A P:6.120W PF:1.000 Freq:50.00Hz Lamp Flux:109.843x1 lm		
NAME: SF15-24V-3528-72-2200-80	TYPE:硅胶	WEIGHT:
SPEC.:	DIM.: 21mm*11.5mm	SERIAL No.:2021122106
MFR.: OLYMPIA	SUR.:1*0.0115	Shielding Angle:

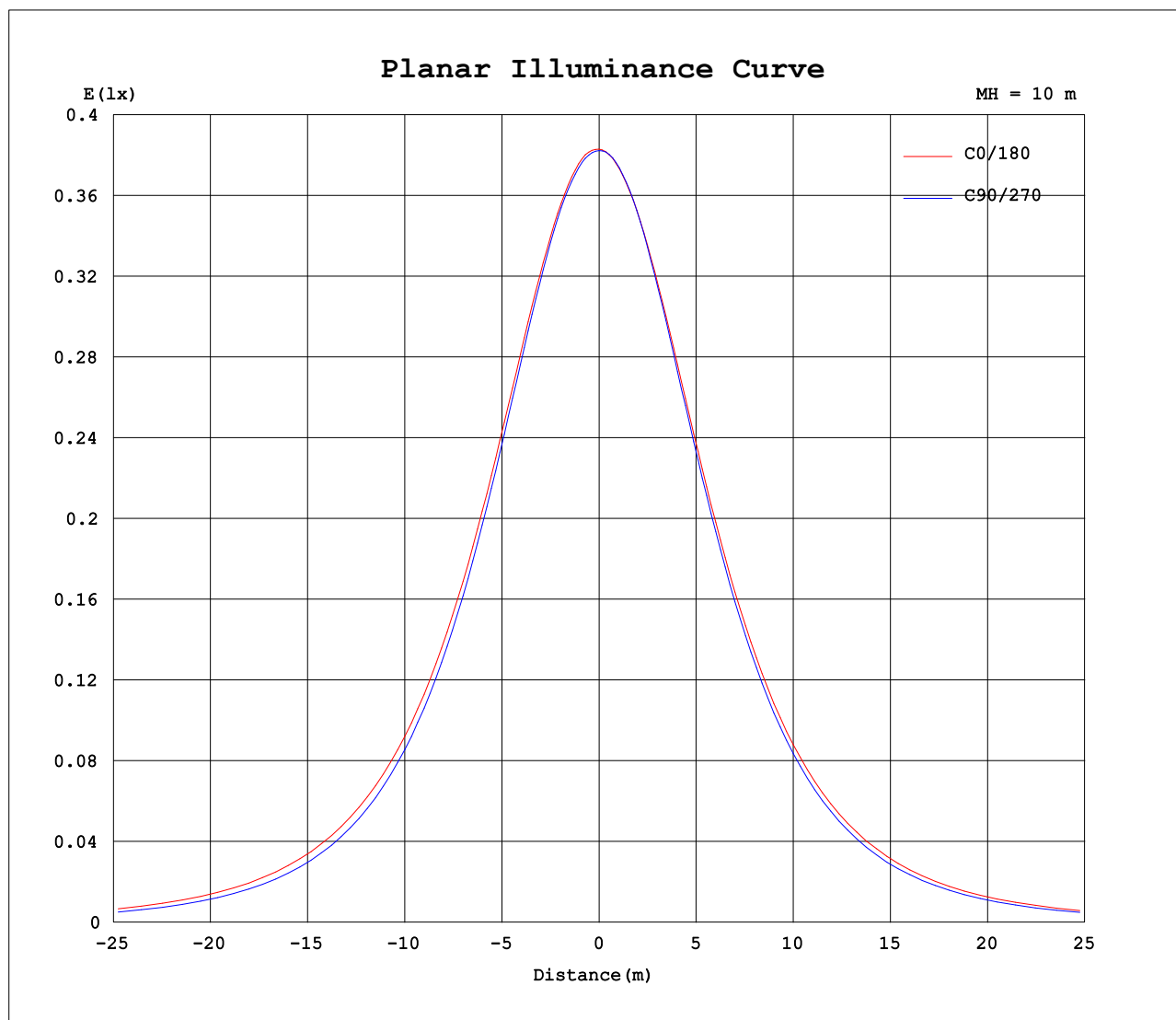
AvgL	cd/m2
L_0~180 (65) av	2875
L_0~180 (75) av	2628
L_0~180 (85) av	2625
L_90~270 (65) av	2401
L_90~270 (75) av	1775
L_90~270 (85) av	461
L_45 (65) av	2860
L_45 (75) av	2610
L_45 (85) av	2446

Standard: GB/T 29293-2012

C Range: 0 - 360DEG
C Interval: 30.0DEG
Test Speed: HIGH
Temperature:25.3DEG
Operators:LPC
Test Date:2021-12-21

γ Range: 0 - 120DEG
γ Interval: 1.0DEG
Test System:EVERFINE GO-2000B_V1 SYSTEM V2.0.362
Humidity:65.0%
Test Distance:9.200m [K=1.0000]
Remarks:

Planar Illuminance Curve



C Range: 0 - 360DEG
C Interval: 30.0DEG
Test Speed: HIGH
Temperature: 25.3DEG
Operators: LPC
Test Date: 2021-12-21

γ Range: 0 - 120DEG
 γ Interval: 1.0DEG
Test System: EVERFINE GO-2000B_V1 SYSTEM V2.0.362
Humidity: 65.0%
Test Distance: 9.200m [K=1.0000]
Remarks:

LUMINOUS DISTRIBUTION INTENSITY DATA

Test:U:24.00V I:0.2550A P:6.120W PF:1.000 Freq:50.00Hz Lamp Flux:109.843x1 lm		
NAME: SF15-24V-3528-72-2200-80	TYPE: 硅胶	WEIGHT:
SPEC.:	DIM.: 21mm*11.5mm	SERIAL No.:2021122106
MFR.: OLYMPIA	SUR.:1*0.0115	Shielding Angle:

Table--1

UNIT: cd

C (DEG) γ (DEG)	0	30	60	90	120	150	180	210	240	270	300	330						
0	38.3	38.3	38.2	38.2	38.2	38.2	38.3	38.3	38.2	38.2	38.2	38.2						
5	38.3	38.2	38.2	38.1	38.0	37.9	38.0	38.0	38.0	38.0	38.1	38.1	38.3					
10	37.8	37.8	37.8	37.6	37.4	37.2	37.5	37.4	37.3	37.5	37.7	37.9						
15	37.0	37.1	37.0	36.7	36.4	36.3	36.5	36.4	36.3	36.4	36.7	37.1						
20	35.9	36.0	35.7	35.3	35.0	35.0	35.2	35.1	34.9	34.9	35.4	35.9						
25	34.4	34.6	34.2	33.7	33.4	33.3	33.7	33.5	33.3	33.2	33.9	34.5						
30	32.7	32.8	32.3	31.7	31.5	31.4	31.9	31.6	31.4	31.2	32.0	32.8						
35	30.7	30.9	30.2	29.4	29.4	29.3	29.8	29.5	29.3	28.9	29.8	31.0						
40	28.5	28.7	27.9	26.9	27.1	26.9	27.4	27.1	27.0	26.4	27.6	28.8						
45	26.1	26.3	25.5	24.2	24.5	24.3	24.9	24.6	24.5	23.7	25.3	26.4						
50	23.4	23.6	22.9	21.3	21.8	21.6	22.2	21.9	21.8	20.8	22.9	23.9						
55	20.7	20.9	20.1	18.3	18.9	18.7	19.3	19.0	19.0	17.7	20.2	21.2						
60	17.8	18.0	17.3	15.1	15.9	15.7	16.3	15.9	16.0	14.6	17.4	18.3						
65	14.7	15.0	14.3	11.9	12.8	12.5	13.2	12.9	13.0	11.4	14.4	15.3						
70	11.7	11.9	11.3	8.68	9.66	9.39	10.1	9.72	9.84	8.16	11.4	12.3						
75	8.63	8.84	8.23	5.58	6.58	6.37	7.01	6.67	6.74	4.98	8.38	9.24						
80	5.68	5.85	5.28	2.75	3.74	3.67	4.24	3.90	3.86	2.18	5.41	6.24						
85	3.14	3.17	2.65	0.61	1.59	1.74	2.12	1.86	1.56	0.32	2.72	3.51						
90	1.52	1.43	0.98	0.36	0.66	0.76	0.84	0.73	0.47	0.17	0.89	1.59						
95	0.71	0.63	0.56	0.37	0.59	0.65	0.43	0.46	0.38	0.18	0.40	0.66						
100	0.48	0.52	0.54	0.40	0.57	0.61	0.35	0.44	0.37	0.20	0.37	0.37						
105	0.49	0.53	0.50	0.45	0.53	0.61	0.27	0.45	0.36	0.29	0.36	0.37						
110	0.49	0.43	0.51	0.47	0.53	0.61	0.19	0.45	0.43	0.29	0.36	0.37						
115	0.50	0.25	0.55	0.49	0.58	0.61	0.11	0.45	0.25	0.30	0.37	0.38						
120	0.53	0.07	0.16	0.20	0.62	0.61	0.03	0.08	0.07	0.05	0.11	0.41						
125	0.00	0.00	0.00	0.00	0.00	0.00	0.00	0.00	0.00	0.00	0.00	0.00						
130	0.00	0.00	0.00	0.00	0.00	0.00	0.00	0.00	0.00	0.00	0.00	0.00						
135	0.00	0.00	0.00	0.00	0.00	0.00	0.00	0.00	0.00	0.00	0.00	0.00						
140	0.00	0.00	0.00	0.00	0.00	0.00	0.00	0.00	0.00	0.00	0.00	0.00						
145	0.00	0.00	0.00	0.00	0.00	0.00	0.00	0.00	0.00	0.00	0.00	0.00						
150	0.00	0.00	0.00	0.00	0.00	0.00	0.00	0.00	0.00	0.00	0.00	0.00						
155	0.00	0.00	0.00	0.00	0.00	0.00	0.00	0.00	0.00	0.00	0.00	0.00						
160	0.00	0.00	0.00	0.00	0.00	0.00	0.00	0.00	0.00	0.00	0.00	0.00						
165	0.00	0.00	0.00	0.00	0.00	0.00	0.00	0.00	0.00	0.00	0.00	0.00						
170	0.00	0.00	0.00	0.00	0.00	0.00	0.00	0.00	0.00	0.00	0.00	0.00						
175	0.00	0.00	0.00	0.00	0.00	0.00	0.00	0.00	0.00	0.00	0.00	0.00						
180	0.00	0.00	0.00	0.00	0.00	0.00	0.00	0.00	0.00	0.00	0.00	0.00						

C Range: 0 - 360DEG
C Interval: 30.0DEG
Test Speed: HIGH
Temperature:25.3DEG
Operators:LPC
Test Date:2021-12-21

γ Range: 0 - 120DEG
γ Interval: 1.0DEG
Test System:EVERFINE GO-2000B_V1 SYSTEM V2.0.362
Humidity:65.0%
Test Distance:9.200m [K=1.0000]
Remarks:

Photometric Data Table [cd]

G/C	0.0	30.0	60.0	90.0	120.0	150.0	180.0	210.0	240.0	270.0
0.0	38.30	38.30	38.25	38.23	38.22	38.23	38.30	38.30	38.25	38.23
3.0	38.31	38.28	38.26	38.17	38.15	38.07	38.18	38.18	38.12	38.20
6.0	38.19	38.16	38.16	37.99	37.90	37.79	37.94	37.92	37.87	37.98
9.0	37.91	37.92	37.90	37.70	37.53	37.41	37.58	37.54	37.51	37.62
12.0	37.52	37.54	37.50	37.24	37.02	36.88	37.10	37.03	36.96	37.07
15.0	37.00	37.07	36.96	36.66	36.37	36.26	36.51	36.39	36.27	36.36
18.0	36.36	36.46	36.26	35.90	35.60	35.49	35.79	35.65	35.48	35.57
21.0	35.60	35.73	35.44	35.01	34.72	34.64	34.96	34.79	34.57	34.58
24.0	34.74	34.89	34.50	34.06	33.73	33.67	34.05	33.81	33.62	33.58
27.0	33.78	33.91	33.46	32.89	32.67	32.57	32.99	32.75	32.53	32.39
30.0	32.71	32.84	32.30	31.71	31.51	31.44	31.85	31.60	31.39	31.18
33.0	31.55	31.71	31.05	30.37	30.25	30.16	30.63	30.34	30.16	29.84
36.0	30.30	30.45	29.75	28.94	28.94	28.81	29.32	29.03	28.85	28.41
39.0	28.96	29.13	28.37	27.44	27.53	27.41	27.92	27.62	27.47	26.91
42.0	27.55	27.75	26.95	25.86	26.05	25.92	26.45	26.14	26.02	25.30
45.0	26.07	26.26	25.47	24.20	24.51	24.35	24.90	24.60	24.50	23.67
48.0	24.52	24.73	23.92	22.50	22.89	22.73	23.30	22.97	22.91	21.95
51.0	22.90	23.12	22.34	20.72	21.23	21.03	21.63	21.30	21.27	20.17
54.0	21.25	21.44	20.71	18.90	19.51	19.29	19.90	19.59	19.56	18.37
57.0	19.54	19.76	19.03	17.03	17.72	17.49	18.13	17.79	17.83	16.51
60.0	17.77	18.00	17.29	15.13	15.92	15.65	16.32	15.95	16.04	14.60
63.0	15.99	16.20	15.52	13.19	14.06	13.78	14.45	14.11	14.20	12.74
66.0	14.15	14.40	13.71	11.27	12.18	11.90	12.58	12.23	12.34	10.78
69.0	12.31	12.53	11.88	9.312	10.29	10.01	10.70	10.33	10.47	8.826
72.0	10.46	10.67	10.05	7.396	8.415	8.140	8.828	8.495	8.587	6.877
75.0	8.631	8.840	8.234	5.584	6.580	6.368	7.011	6.670	6.744	4.982
78.0	6.816	7.001	6.439	3.835	4.816	4.664	5.292	4.935	4.975	3.197
81.0	5.126	5.257	4.724	2.217	3.231	3.207	3.760	3.437	3.337	1.668
84.0	3.579	3.654	3.127	0.9314	1.914	2.057	2.489	2.200	1.941	0.5059
87.0	2.376	2.339	1.799	0.4057	1.058	1.240	1.505	1.289	0.9779	0.2014
90.0	1.515	1.425	0.9821	0.3578	0.6592	0.7582	0.8377	0.7301	0.4668	0.1747
93.0	0.9463	0.8582	0.6289	0.3519	0.6081	0.6939	0.4668	0.4829	0.3810	0.1801
96.0	0.6242	0.5574	0.5529	0.3720	0.5902	0.6295	0.4185	0.4573	0.3783	0.1855
99.0	0.4827	0.5077	0.5469	0.3921	0.5781	0.6032	0.3702	0.4424	0.3755	0.1908
102.0	0.4860	0.5227	0.5281	0.4324	0.5661	0.6126	0.3219	0.4441	0.3727	0.2310
105.0	0.4893	0.5292	0.5028	0.4455	0.5280	0.6119	0.2736	0.4459	0.3620	0.2864
108.0	0.4926	0.4979	0.5025	0.4587	0.5226	0.6111	0.2253	0.4476	0.4021	0.2902
111.0	0.4958	0.3912	0.5325	0.4718	0.5476	0.6104	0.1771	0.4493	0.3963	0.2940
114.0	0.4991	0.2845	0.5578	0.4850	0.5729	0.6096	0.1288	0.4511	0.2882	0.2978
117.0	0.5024	0.1778	0.3949	0.4981	0.6029	0.6089	0.0805	0.3011	0.1801	0.1993
120.0	0.5327	0.0711	0.1580	0.1993	0.6182	0.6081	0.0322	0.0753	0.0721	0.0498
G/C	300.0	330.0								
0.0	38.22	38.23								
3.0	38.20	38.26								
6.0	38.07	38.21								
9.0	37.79	37.98								
12.0	37.34	37.61								
15.0	36.73	37.11								
18.0	36.00	36.48								
21.0	35.13	35.62								
24.0	34.21	34.77								
27.0	33.12	33.78								
30.0	31.95	32.82								
33.0	30.70	31.74								
36.0	29.39	30.54								
39.0	28.02	29.24								
42.0	26.68	27.87								
45.0	25.29	26.43								
48.0	23.88	24.91								
51.0	22.35	23.34								
54.0	20.74	21.72								
57.0	19.08	20.02								
60.0	17.36	18.27								
63.0	15.61	16.55								
66.0	13.84	14.74								
69.0	12.01	12.91								
72.0	10.19	11.08								
75.0	8.377	9.243								
78.0	6.573	7.394								
81.0	4.839	5.654								
84.0	3.221	4.006								
87.0	1.826	2.592								
90.0	0.8927	1.586								

C Range: 0 - 360DEG
 C Interval: 30.0DEG
 Test Speed: HIGH
 Temperature: 25.3DEG
 Operators: LPC
 Test Date: 2021-12-21

γ Range: 0 - 120DEG
 γ Interval: 1.0DEG
 Test System: EVERFINE GO-2000B_V1 SYSTEM V2.0.362
 Humidity: 65.0%
 Test Distance: 9.200m [K=1.0000]
 Remarks:

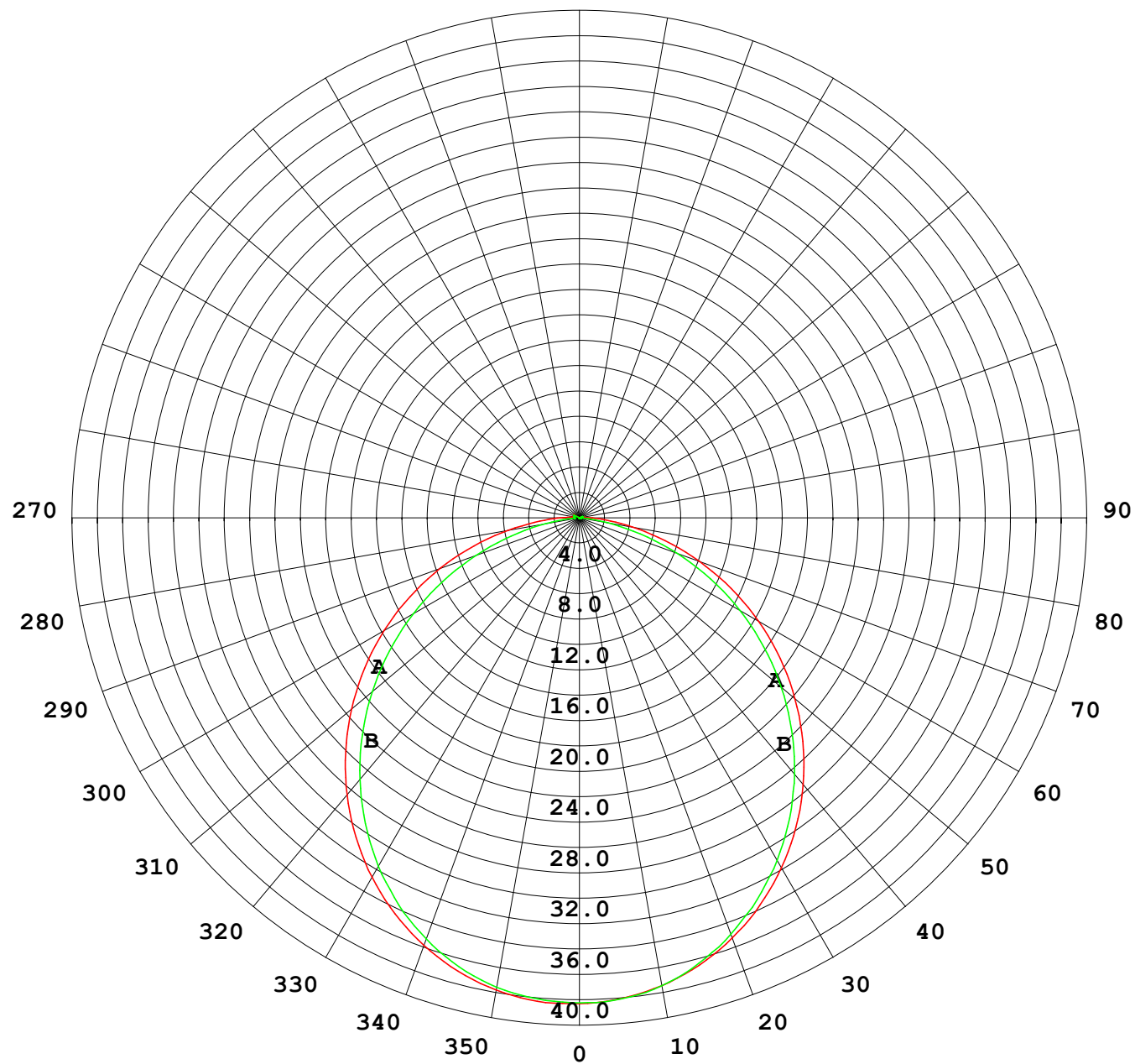
Photometric Data Table [cd]

93.0	0.4717	0.9313
96.0	0.3896	0.5639
99.0	0.3717	0.4024
102.0	0.3537	0.3619
105.0	0.3557	0.3656
108.0	0.3584	0.3694
111.0	0.3629	0.3732
114.0	0.3674	0.3769
117.0	0.2635	0.3869
120.0	0.1054	0.4121

C Range: 0 - 360DEG
C Interval: 30.0DEG
Test Speed: HIGH
Temperature: 25.3DEG
Operators: LPC
Test Date: 2021-12-21

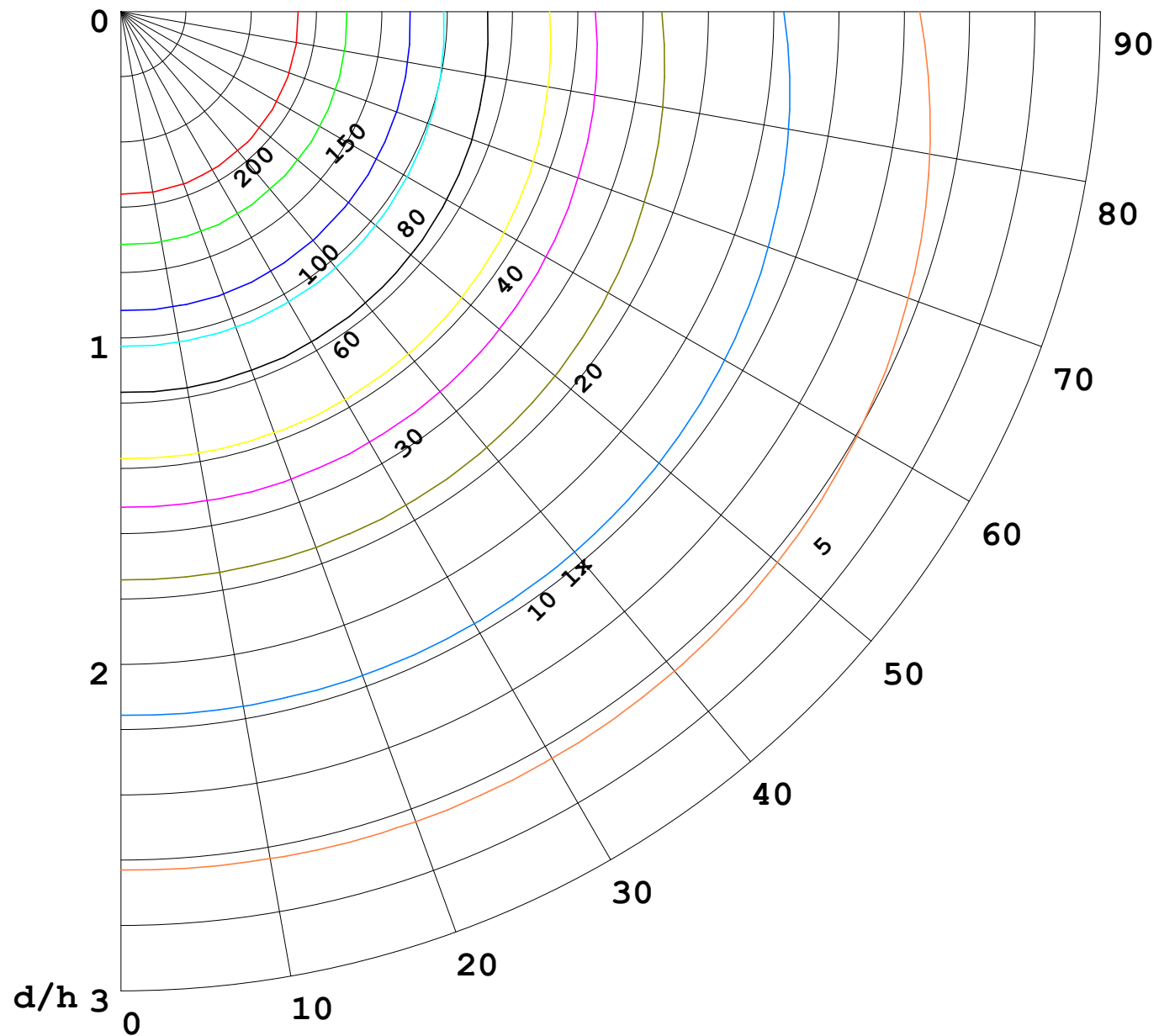
γ Range: 0 - 120DEG
γ Interval: 1.0DEG
Test System: EVERFINE GO-2000B_V1 SYSTEM V2.0.362
Humidity: 65.0%
Test Distance: 9.200m [K=1.0000]
Remarks:

I (cd)



1000 lm

$\kappa = 1$



F = 5000 lm
 K = 0.7
 Hcc = 0.0 m
 Hfc = 0.0 m
 Eave = 100 lx

	Pcc	Pw	Pfc
—	70	50	30
—	50	30	20

