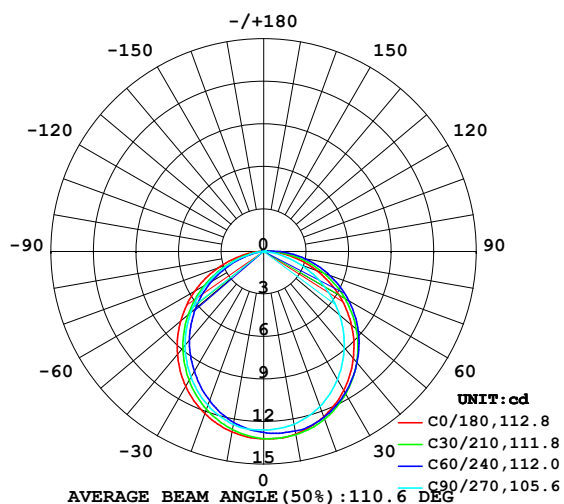


LUMINAIRE PHOTOMETRIC TEST REPORT

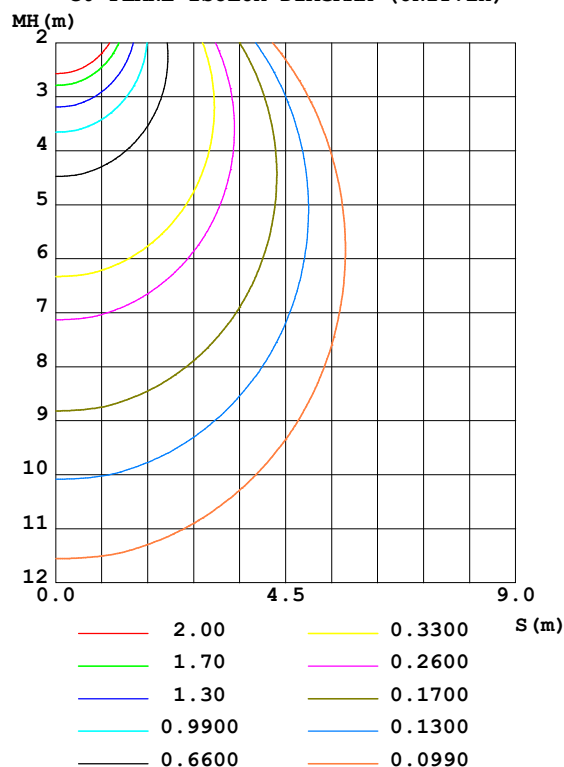
Test:U:24.00V I:0.2232A P:5.357W PF:1.000 Freq:50.00Hz Lamp Flux:37.175x1 lm		
NAME: SF15-24V-3528-72-R	TYPE: 硅胶	WEIGHT:
SPEC.:	DIM.: 21mm*11.5mm	SERIAL No.:2021122109
MFR.: OLYMPIA	SUR.:1*0.0115	Shielding Angle:

DATA OF LAMP		PHOTOMETRIC DATA				Eff: 6.94 lm/W
MODEL	3528	I _{max} (cd)	13.22	S/MH (C0/180)	1.24	
NOMINAL POWER (W)	5	LOR (%)	100.0	S/MH (C90/270)	1.22	
RATED VOLTAGE (V)	24	TOTAL FLUX (lm)	37.175	η UP, DN (C0-180)	0.7, 47.4	
NOMINAL FLUX (lm)	37.175	CIE CLASS	DIRECT	η UP, DN (C180-360)	0.8, 51.1	
LAMPS INSIDE	1	η up (%)	1.5	CIBSE SHR NOM	1.25	
TEST VOLTAGE (V)	24	η down (%)	98.5	CIBSE SHR MAX	1.35	

LUMINOUS INTENSITY DISTRIBUTION DIAGRAM



C0 PLANE ISOLUX DIAGRAM (UNIT:lx)



C Range: 0 - 360DEG
C Interval: 30.0DEG
Test Speed: HIGH
Temperature: 25.3DEG
Operators: LPC
Test Date: 2021-12-21

γ Range: 0 - 120DEG
γ Interval: 1.0DEG
Test System: EVERFINE GO-2000B_V1 SYSTEM V2.0.362
Humidity: 65.0%
Test Distance: 9.200m [K=1.0000]
Remarks:

ZONAL FLUX DIAGRAM

ZONAL FLUX DIAGRAM:

γ	C0	C45	C90	C135	C180	C225	C270	C315	γ	Φ zone	Φ total	%lum, lamp
10	13.07	12.98	12.37	11.85	12.92	12.50	12.38	12.83	0- 10	1.213	1.213	3.26, 3.26
20	12.40	12.52	11.63	10.68	12.17	11.51	11.54	12.57	10- 20	3.465	4.678	12.6, 12.6
30	11.30	11.56	10.42	9.172	11.00	10.14	10.25	11.85	20- 30	5.218	9.896	26.6, 26.6
40	9.837	10.23	8.843	7.398	9.467	8.513	8.626	10.80	30- 40	6.254	16.15	43.4, 43.4
50	8.089	8.622	6.984	5.423	7.647	6.631	6.737	9.428	40- 50	6.460	22.61	60.8, 60.8
60	6.128	6.775	4.943	3.332	5.611	4.558	4.656	7.739	50- 60	5.818	28.43	76.5, 76.5
70	4.002	4.744	2.812	1.387	3.445	2.410	2.515	5.852	60- 70	4.440	32.87	88.4, 88.4
80	1.927	2.656	0.8628	0.2667	1.421	0.6409	0.6246	3.802	70- 80	2.650	35.52	95.5, 95.5
90	0.4985	0.8221	0.0754	0.1655	0.2257	0.1182	0.0201	1.769	80- 90	1.102	36.62	98.5, 98.5
100	0.1308	0.1610	0.1105	0.1499	0.0914	0.1093	0.0201	0.3475	90-100	0.3362	36.96	99.4, 99.4
110	0.1332	0.1155	0.1189	0.1529	0.0499	0.0981	0.0452	0.0855	100-110	0.1322	37.09	99.8, 99.8
120	0.0243	0.0241	0.0413	0.1558	0.0083	0.0178	0.0503	0.0329	110-120	0.0845	37.17	100, 100
130	0	0	0	0	0	0	0	0	120-130	0.0028	37.17	100, 100
140	0	0	0	0	0	0	0	0	130-140	0	37.17	100, 100
150	0	0	0	0	0	0	0	0	140-150	0	37.17	100, 100
160	0	0	0	0	0	0	0	0	150-160	0	37.17	100, 100
170	0	0	0	0	0	0	0	0	160-170	0	37.17	100, 100
180	0	0	0	0	0	0	0	0	170-180	0	37.17	100, 100
DEG	LUMINOUS INTENSITY:cd									UNIT:lm		

Conical surface Flux(90deg): 19.407 lm

%lum = 52.2%

%lamp = 52.2%

Conical surface Flux(120deg): 28.427 lm

%lum = 76.5%

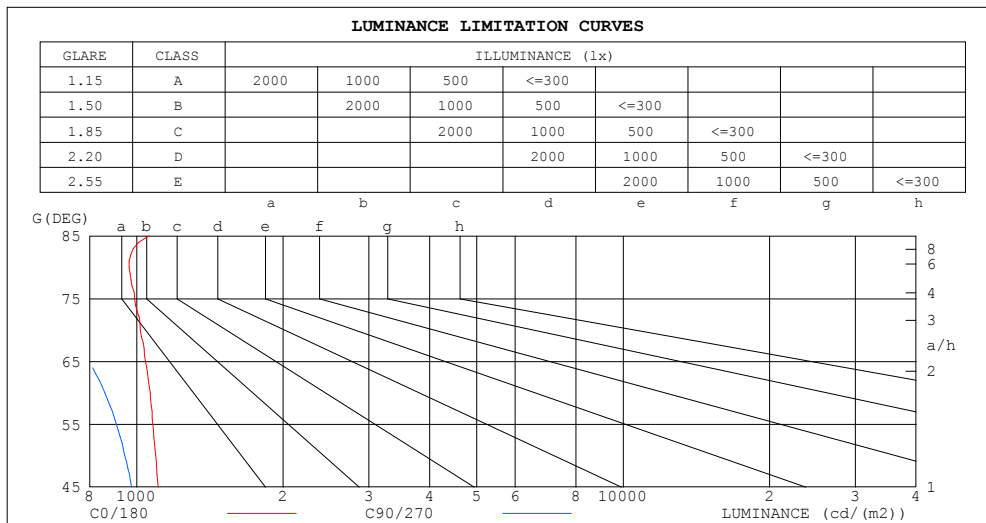
%lamp = 76.5%

C Range: 0 - 360DEG
 C Interval: 30.0DEG
 Test Speed: HIGH
 Temperature:25.3DEG
 Operators:LPC
 Test Date:2021-12-21

γ Range: 0 - 120DEG
 γ Interval: 1.0DEG
 Test System:EVERFINE GO-2000B_V1 SYSTEM V2.0.362
 Humidity:65.0%
 Test Distance:9.200m [K=1.0000]
 Remarks:

LUMINANCE LIMITATION CURVES

Test:U:24.00V I:0.2232A P:5.357W PF:1.000 Freq:50.00Hz Lamp Flux:37.175x1 lm		
NAME: SF15-24V-3528-72-R	TYPE: 硅胶	WEIGHT:
SPEC.:	DIM.: 21mm*11.5mm	SERIAL No.:2021122109
MFR.: OLYMPIA	SUR.:1*0.0115	Shielding Angle:



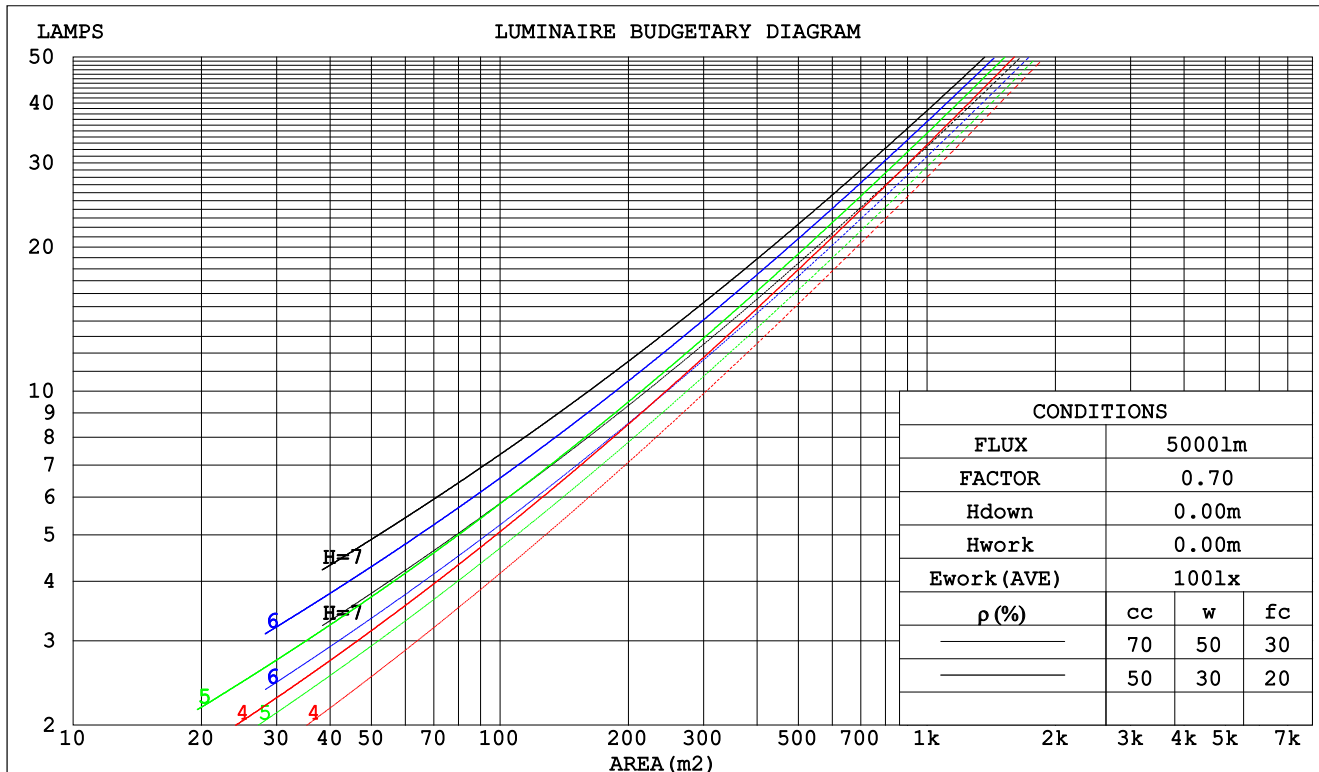
C Range: 0 - 360DEG
C Interval: 30.0DEG
Test Speed: HIGH
Temperature:25.3DEG
Operators:LPC
Test Date:2021-12-21

γ Range: 0 - 120DEG
γ Interval: 1.0DEG
Test System:EVERFINE GO-2000B_V1 SYSTEM V2.0.362
Humidity:65.0%
Test Distance:9.200m [K=1.0000]
Remarks:

CU AND LUMINAIRE BUDGETARY ESTIMATE DIAGRAM

Test:U:24.00V I:0.2232A P:5.357W PF:1.000 Freq:50.00Hz Lamp Flux:37.175x1 lm		
NAME: SF15-24V-3528-72-R	TYPE: 硅胶	WEIGHT:
SPEC.:	DIM.: 21mm*11.5mm	SERIAL No.:2021122109
MFR.: OLYMPIA	SUR.:1*0.0115	Shielding Angle:

pcc	80%			70%			50%			30%			10%			0
pw	50%	30%	10%	50%	30%	10%	50%	30%	10%	50%	30%	10%	50%	30%	10%	0
pfc	20%			20%			20%			20%			20%			0
RCR	RCR:Room Cavity Ratio						Coefficients of Utilization(CU)									
0.0	1.19	1.19	1.19	1.16	1.16	1.16	1.10	1.10	1.10	1.05	1.05	1.05	1.01	1.01	1.01	.99
1.0	1.03	.98	.94	1.01	.96	.93	.96	.93	.90	.92	.89	.87	.88	.86	.84	.81
2.0	.90	.83	.77	.88	.81	.76	.84	.78	.74	.80	.76	.72	.77	.73	.70	.68
3.0	.79	.70	.64	.77	.69	.63	.74	.67	.62	.71	.65	.60	.68	.63	.59	.57
4.0	.70	.61	.54	.68	.60	.53	.65	.58	.52	.63	.57	.52	.61	.55	.51	.48
5.0	.62	.53	.46	.61	.52	.46	.59	.51	.45	.56	.50	.45	.54	.49	.44	.42
6.0	.56	.47	.40	.55	.46	.40	.53	.45	.40	.51	.44	.39	.49	.43	.39	.37
7.0	.51	.42	.36	.50	.41	.35	.48	.41	.35	.47	.40	.35	.45	.39	.34	.32
8.0	.46	.38	.32	.45	.37	.32	.44	.37	.31	.43	.36	.31	.41	.35	.31	.29
9.0	.42	.34	.29	.42	.34	.28	.40	.33	.28	.39	.33	.28	.38	.32	.28	.26
10.0	.39	.31	.26	.39	.31	.26	.37	.30	.26	.36	.30	.25	.35	.30	.25	.23



C Range: 0 - 360DEG
 C Interval: 30.0DEG
 Test Speed: HIGH
 Temperature:25.3DEG
 Operators:LPC
 Test Date:2021-12-21

γ Range: 0 - 120DEG
 γ Interval: 1.0DEG
 Test System:EVERFINE GO-2000B_V1 SYSTEM V2.0.362
 Humidity:65.0%
 Test Distance:9.200m [K=1.0000]
 Remarks:

WEC AND CCEC

Test:U:24.00V I:0.2232A P:5.357W PF:1.000 Freq:50.00Hz Lamp Flux:37.175x1 lm		
NAME: SF15-24V-3528-72-R	TYPE: 硅胶	WEIGHT:
SPEC.:	DIM.: 21mm*11.5mm	SERIAL No.:2021122109
MFR.: OLYMPIA	SUR.:1*0.0115	Shielding Angle:

pcc	80%			70%			50%			30%			10%			0	
pw	50%	30%	10%	50%	30%	10%	50%	30%	10%	50%	30%	10%	50%	30%	10%	0	
pfc	20%			20%			20%			20%			20%			0	
RCR	RCR:Room Cavity Ratio						Wall Exitance Coeffcients(WEC)										
0.0																	
1.0	.321	.182	.058	.313	.179	.057	.299	.172	.055	.286	.165	.053	.274	.159	.051		
2.0	.297	.163	.050	.290	.160	.049	.278	.154	.048	.266	.149	.047	.256	.145	.046		
3.0	.273	.145	.043	.267	.143	.043	.256	.139	.042	.246	.135	.041	.236	.131	.040		
4.0	.251	.130	.038	.246	.129	.038	.236	.125	.037	.227	.122	.037	.218	.118	.036		
5.0	.231	.118	.034	.227	.116	.034	.218	.113	.033	.210	.111	.033	.202	.108	.032		
6.0	.214	.107	.031	.210	.106	.031	.202	.104	.030	.195	.101	.030	.188	.099	.029		
7.0	.199	.099	.028	.196	.097	.028	.188	.095	.027	.182	.093	.027	.176	.091	.027		
8.0	.186	.091	.026	.183	.090	.025	.176	.088	.025	.170	.086	.025	.165	.085	.025		
9.0	.174	.084	.024	.171	.083	.023	.165	.082	.023	.160	.080	.023	.155	.079	.023		
10.0	.164	.078	.022	.161	.078	.022	.156	.076	.021	.151	.075	.021	.146	.074	.021		

pcc	80%			70%			50%			30%			10%			0
pw	50%	30%	10%	50%	30%	10%	50%	30%	10%	50%	30%	10%	50%	30%	10%	0
pfc	20%			20%			20%			20%			20%			0
RCR	RCR:Room Cavity Ratio						Ceiling Cavity Exitance Coefficients(CCEC)									
0.0	.202	.202	.202	.173	.173	.173	.118	.118	.118	.068	.068	.068	.022	.022	.022	
1.0	.193	.168	.145	.165	.144	.125	.113	.099	.086	.065	.057	.050	.021	.018	.016	
2.0	.184	.143	.109	.158	.123	.094	.108	.085	.066	.062	.050	.039	.020	.016	.013	
3.0	.177	.126	.086	.151	.109	.074	.104	.075	.052	.060	.044	.031	.019	.014	.010	
4.0	.169	.113	.070	.145	.097	.061	.100	.068	.043	.058	.040	.025	.019	.013	.008	
5.0	.161	.102	.059	.139	.089	.051	.096	.062	.036	.055	.036	.021	.018	.012	.007	
6.0	.154	.094	.051	.133	.081	.044	.091	.057	.031	.053	.034	.019	.017	.011	.006	
7.0	.147	.087	.045	.127	.076	.039	.088	.053	.028	.051	.031	.017	.016	.010	.005	
8.0	.141	.081	.040	.121	.071	.035	.084	.050	.025	.049	.029	.015	.016	.010	.005	
9.0	.135	.076	.037	.116	.066	.032	.080	.047	.023	.047	.028	.014	.015	.009	.005	
10.0	.129	.072	.034	.111	.063	.030	.077	.044	.021	.045	.026	.013	.015	.009	.004	

C Range: 0 - 360DEG
C Interval: 30.0DEG
Test Speed: HIGH
Temperature:25.3DEG
Operators:LPC
Test Date:2021-12-21

γ Range: 0 - 120DEG
γ Interval: 1.0DEG
Test System:EVERFINE GO-2000B_V1 SYSTEM V2.0.362
Humidity:65.0%
Test Distance:9.200m [K=1.0000]
Remarks:

UGR(Unified Glare Rating) Table

Test:U:24.00V I:0.2232A P:5.357W PF:1.000 Freq:50.00Hz Lamp Flux:37.175x1 lm										
NAME: SF15-24V-3528-72-R					TYPE: 硅胶			WEIGHT:		
SPEC.:					DIM.: 21mm*11.5mm			SERIAL No.:2021122109		
MFR.: OLYMPIA					SUR.:1*0.0115			Shielding Angle:		
ceiling/cavity	0.7	0.7	0.5	0.5	0.3	0.7	0.7	0.5	0.5	0.3
walls	0.5	0.3	0.5	0.3	0.3	0.5	0.3	0.5	0.3	0.3
working plane	0.2	0.2	0.2	0.2	0.2	0.2	0.2	0.2	0.2	0.2
Room dimensions	Viewed crosswise					Viewed endwise				
x = 2H y = 2H	25.1	26.6	25.3	26.8	27.0	24.7	26.2	25.0	26.5	26.7
3H	26.7	28.1	27.0	28.4	28.6	26.1	27.5	26.5	27.8	28.1
4H	27.4	28.7	27.8	29.0	29.3	26.6	28.0	27.0	28.3	28.5
6H	28.0	29.2	28.3	29.5	29.8	26.9	28.2	27.3	28.5	28.8
8H	28.2	29.4	28.6	29.7	30.0	27.0	28.2	27.3	28.5	28.8
12H	28.4	29.5	28.7	29.9	30.2	27.0	28.1	27.3	28.5	28.8
4H 2H	25.8	27.2	26.2	27.4	27.7	25.6	27.0	26.0	27.2	27.5
3H	27.7	28.9	28.1	29.2	29.5	27.4	28.6	27.8	28.9	29.3
4H	28.6	29.6	29.0	30.0	30.4	28.2	29.2	28.6	29.6	30.0
6H	29.3	30.2	29.7	30.6	31.0	28.7	29.6	29.1	30.0	30.4
8H	29.6	30.5	30.0	30.9	31.3	28.8	29.7	29.3	30.1	30.5
12H	29.8	30.6	30.3	31.0	31.5	28.9	29.7	29.3	30.1	30.5
8H 4H	29.0	29.9	29.5	30.3	30.7	28.7	29.6	29.2	30.0	30.4
6H	30.0	30.7	30.4	31.1	31.6	29.6	30.4	30.1	30.8	31.3
8H	30.4	31.0	30.9	31.5	32.0	30.0	30.6	30.5	31.1	31.6
12H	30.8	31.3	31.3	31.8	32.3	30.2	30.8	30.7	31.2	31.8
12H 4H	29.1	29.9	29.6	30.3	30.8	28.8	29.6	29.3	30.0	30.5
6H	30.1	30.8	30.6	31.3	31.7	29.8	30.5	30.3	30.9	31.4
8H	30.6	31.2	31.1	31.7	32.2	30.3	30.9	30.8	31.3	31.9
Variations with the observer position at spacings:										
S = 1.0H	+ 0.1 / - 0.2					+ 0.1 / - 0.2				
1.5H	+ 0.2 / - 0.3					+ 0.3 / - 0.4				
2.0H	+ 0.2 / - 0.4					+ 0.4 / - 0.6				

CIE Pub.117, 37.17 lm Total Lamp Luminous Flux Correct (8log(F/F0) = -11.4)

C Range: 0 - 360DEG
C Interval: 30.0DEG
Test Speed: HIGH
Temperature:25.3DEG
Operators:LPC
Test Date:2021-12-21

γ Range: 0 - 120DEG
γ Interval: 1.0DEG
Test System:EVERFINE GO-2000B_V1 SYSTEM V2.0.362
Humidity:65.0%
Test Distance:9.200m [K=1.0000]
Remarks:

UTILIZATION FACTORS TABLE

Test:U:24.00V I:0.2232A P:5.357W PF:1.000 Freq:50.00Hz Lamp Flux:37.175x1 lm		
NAME: SF15-24V-3528-72-R	TYPE: 硅胶	WEIGHT:
SPEC.:	DIM.: 21mm*11.5mm	SERIAL No.:2021122109
MFR.: OLYMPIA	SUR.:1*0.0115	Shielding Angle:

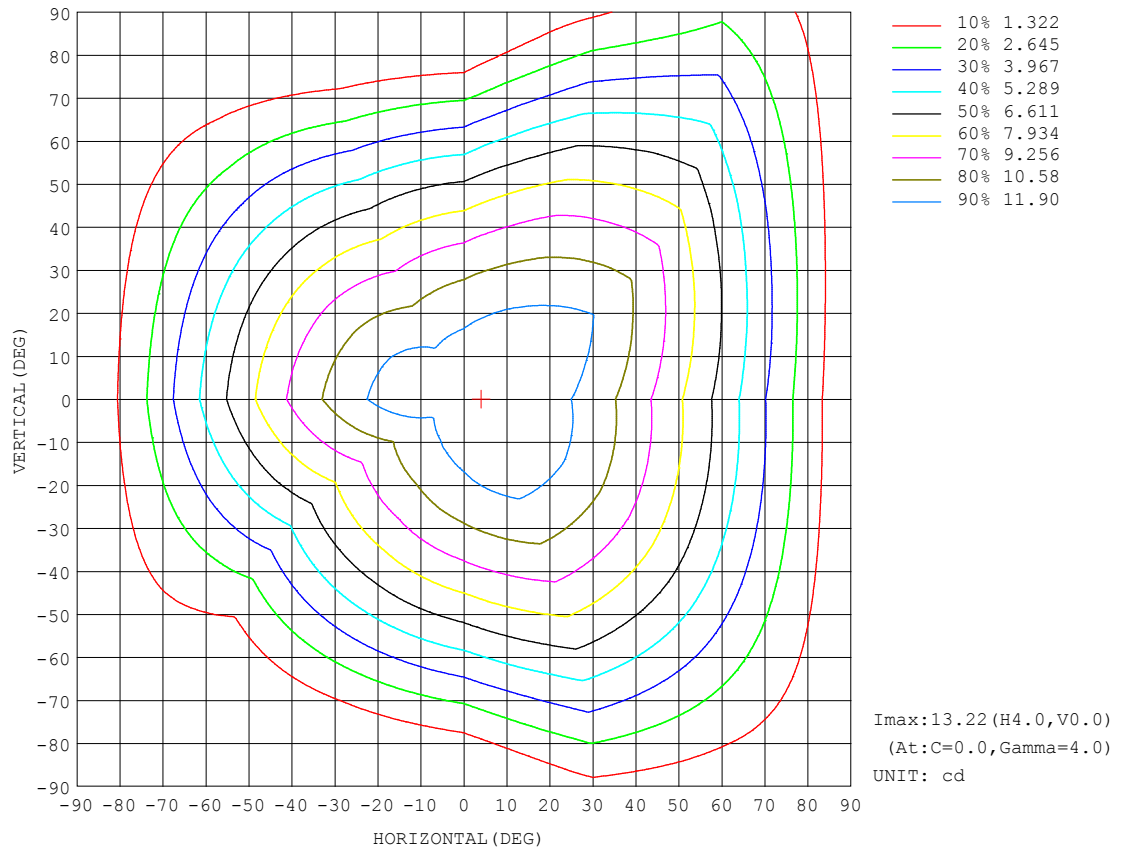
REFLECTANCE										
Ceiling	0.8	0.8	0.8	0.7	0.7	0.7	0.5	0.5	0.5	0
Walls	0.7	0.5	0.3	0.7	0.5	0.3	0.7	0.5	0.3	0
Working plane	0.2	0.2	0.2	0.2	0.2	0.2	0.2	0.2	0.2	0
ROOM INDEX	UTILIZATION FACTORS (PERCENT) $k(RI) \times RCR = 5$									
$k = 0.60$	57	45	38	56	45	38	55	44	38	31
0.80	67	55	47	66	54	47	64	54	47	40
1.00	75	64	56	74	63	56	71	64	55	48
1.25	82	71	64	81	71	64	78	69	63	55
1.50	87	77	70	85	76	69	82	74	68	60
2.00	94	85	78	92	84	78	88	81	76	68
2.50	98	90	83	96	88	82	92	85	81	72
3.00	101	94	88	99	92	87	95	89	85	76
4.00	105	99	94	103	97	93	98	94	90	81
5.00	108	103	98	105	101	97	100	97	93	84
ROOM INDEX	UF (total)									Direct
According to DIN EN 13032-2 2004			Suspended					SHRNOM = 1.25		

C Range: 0 - 360DEG
 C Interval: 30.0DEG
 Test Speed: HIGH
 Temperature: 25.3DEG
 Operators: LPC
 Test Date: 2021-12-21

γ Range: 0 - 120DEG
 γ Interval: 1.0DEG
 Test System: EVERFINE GO-2000B_V1 SYSTEM V2.0.362
 Humidity: 65.0%
 Test Distance: 9.200m [K=1.0000]
 Remarks:

ISOCANDELA DIAGRAM

Test:U:24.00V I:0.2232A P:5.357W PF:1.000 Freq:50.00Hz Lamp Flux:37.175x1 lm		
NAME: SF15-24V-3528-72-R	TYPE: 硅胶	WEIGHT:
SPEC.:	DIM.: 21mm*11.5mm	SERIAL No.:2021122109
MFR.: OLYMPIA	SUR.:1*0.0115	Shielding Angle:

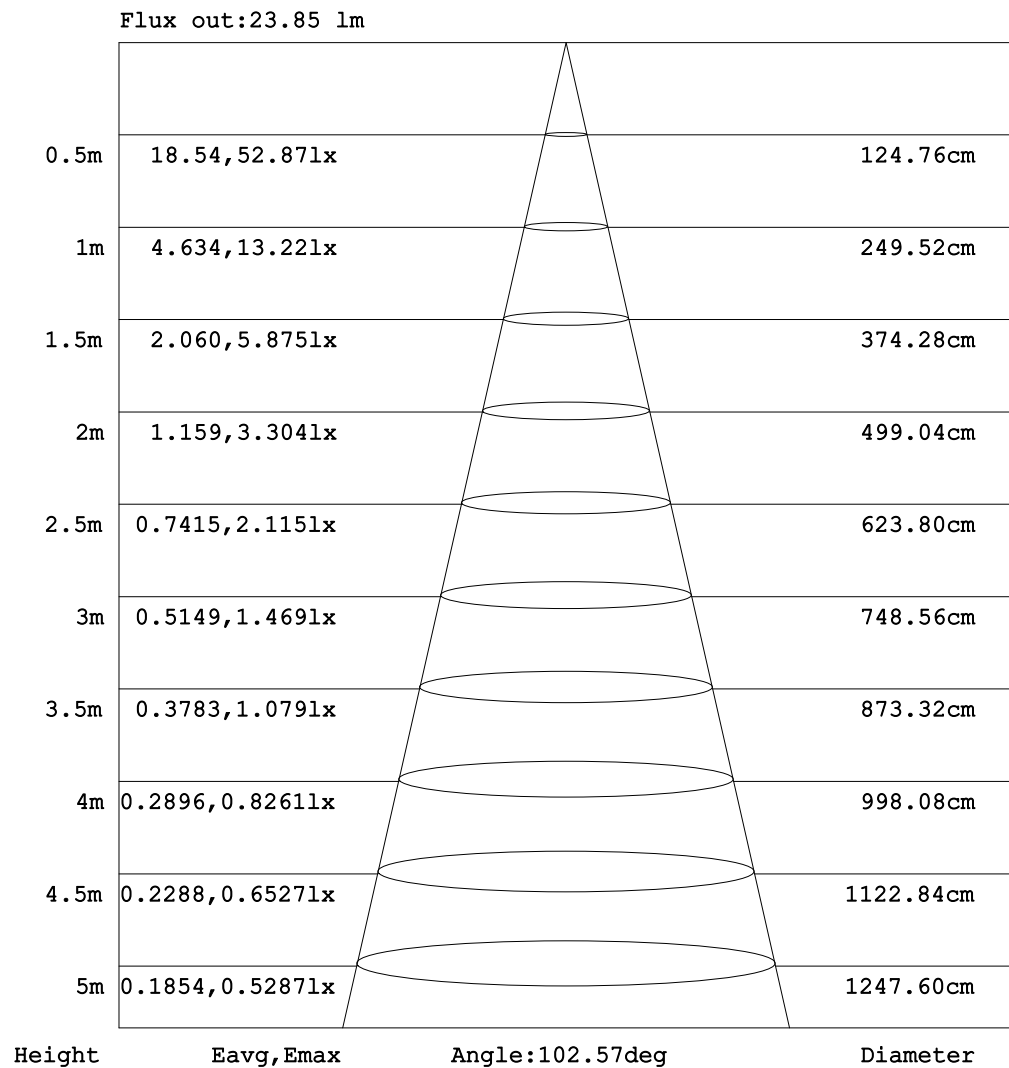


C Range: 0 - 360DEG
C Interval: 30.0DEG
Test Speed: HIGH
Temperature:25.3DEG
Operators:LPC
Test Date:2021-12-21

γ Range: 0 - 120DEG
 γ Interval: 1.0DEG
Test System:EVERFINE GO-2000B_V1 SYSTEM V2.0.362
Humidity:65.0%
Test Distance:9.200m [K=1.0000]
Remarks:

AAI Figure

Test:U:24.00V I:0.2232A P:5.357W PF:1.000 Freq:50.00Hz Lamp Flux:37.175x1 lm		
NAME: SF15-24V-3528-72-R	TYPE: 硅胶	WEIGHT:
SPEC.:	DIM.: 21mm*11.5mm	SERIAL No.:2021122109
MFR.: OLYMPIA	SUR.:1*0.0115	Shielding Angle:



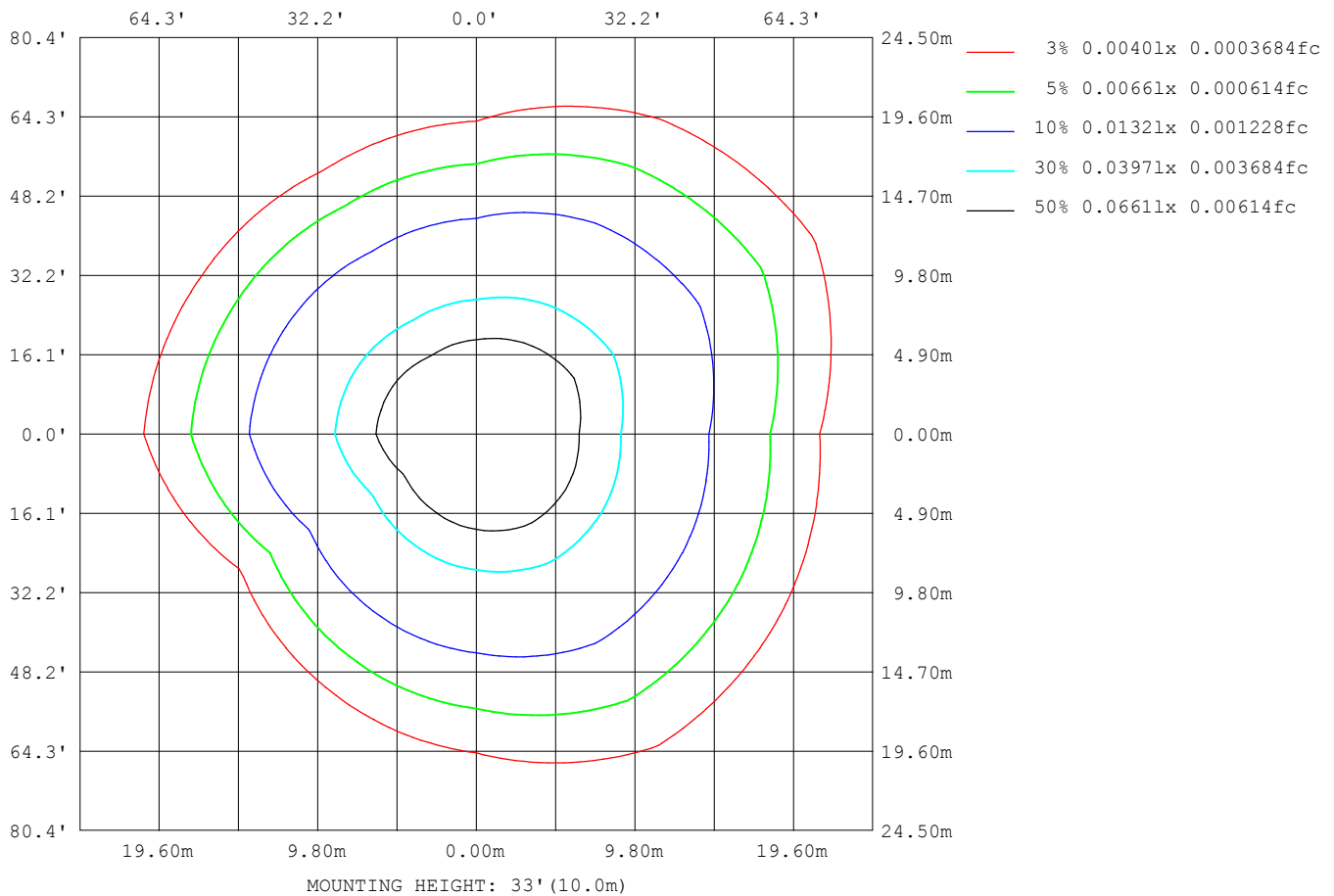
Note: The Curves indicate the illuminated area and the average illumination when the luminaire is at different distance.

C Range: 0 - 360DEG
 C Interval: 30.0DEG
 Test Speed: HIGH
 Temperature: 25.3DEG
 Operators: LPC
 Test Date: 2021-12-21

γ Range: 0 - 120DEG
 γ Interval: 1.0DEG
 Test System: EVERFINE GO-2000B_V1 SYSTEM V2.0.362
 Humidity: 65.0%
 Test Distance: 9.200m [K=1.0000]
 Remarks:

ISOLUX DIAGRAM

Test:U:24.00V I:0.2232A P:5.357W PF:1.000 Freq:50.00Hz Lamp Flux:37.175x1 lm		
NAME: SF15-24V-3528-72-R	TYPE: 硅胶	WEIGHT:
SPEC.:	DIM.: 21mm*11.5mm	SERIAL No.:2021122109
MFR.: OLYMPIA	SUR.:1*0.0115	Shielding Angle:



C Range: 0 - 360DEG
C Interval: 30.0DEG
Test Speed: HIGH
Temperature:25.3DEG
Operators:LPC
Test Date:2021-12-21

γ Range: 0 - 120DEG
 γ Interval: 1.0DEG
Test System:EVERFINE GO-2000B_V1 SYSTEM V2.0.362
Humidity:65.0%
Test Distance:9.200m [K=1.0000]
Remarks:

LED Avg.L Report

Test:U:24.00V I:0.2232A P:5.357W PF:1.000 Freq:50.00Hz Lamp Flux:37.175x1 lm		
NAME: SF15-24V-3528-72-R	TYPE:硅胶	WEIGHT:
SPEC.:	DIM.: 21mm*11.5mm	SERIAL No.:2021122109
MFR.: OLYMPIA	SUR.:1*0.0115	Shielding Angle:

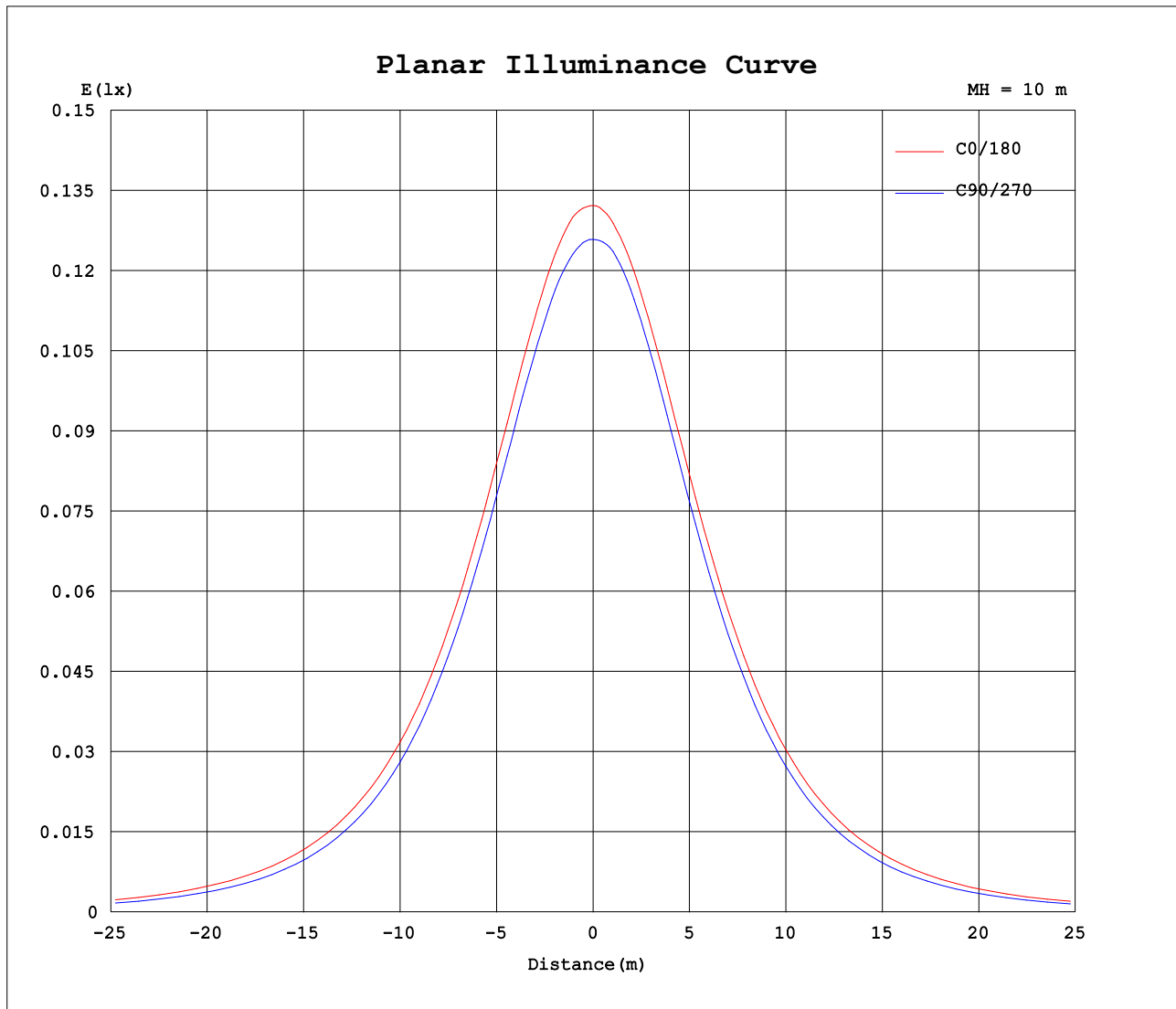
AvgL	cd/m2
L_0~180 (65) av	988
L_0~180 (75) av	894
L_0~180 (85) av	870
L_90~270 (65) av	768
L_90~270 (75) av	555
L_90~270 (85) av	115
L_45 (65) av	954
L_45 (75) av	916
L_45 (85) av	1292

Standard: GB/T 29293-2012

C Range: 0 - 360DEG
C Interval: 30.0DEG
Test Speed: HIGH
Temperature:25.3DEG
Operators:LPC
Test Date:2021-12-21

γ Range: 0 - 120DEG
γ Interval: 1.0DEG
Test System:EVERFINE GO-2000B_V1 SYSTEM V2.0.362
Humidity:65.0%
Test Distance:9.200m [K=1.0000]
Remarks:

Planar Illuminance Curve



C Range: 0 - 360DEG
C Interval: 30.0DEG
Test Speed: HIGH
Temperature: 25.3DEG
Operators: LPC
Test Date: 2021-12-21

γ Range: 0 - 120DEG
 γ Interval: 1.0DEG
Test System: EVERFINE GO-2000B_V1 SYSTEM V2.0.362
Humidity: 65.0%
Test Distance: 9.200m [K=1.0000]
Remarks:

LUMINOUS DISTRIBUTION INTENSITY DATA

Test:U:24.00V I:0.2232A P:5.357W PF:1.000 Freq:50.00Hz Lamp Flux:37.175x1 lm		
NAME: SF15-24V-3528-72-R	TYPE: 硅胶	WEIGHT:
SPEC.:	DIM.: 21mm*11.5mm	SERIAL No.:2021122109
MFR.: OLYMPIA	SUR.:1*0.0115	Shielding Angle:

Table--1

UNIT: cd

C (DEG) γ (DEG)	0	30	60	90	120	150	180	210	240	270	300	330						
0	13.2	13.2	12.8	12.6	12.6	12.6	13.2	13.2	12.8	12.6	12.6	12.6						
5	13.2	13.2	12.9	12.5	12.3	12.2	13.1	13.0	12.6	12.6	12.7	12.8						
10	13.1	13.1	12.9	12.4	12.0	11.7	12.9	12.8	12.3	12.4	12.7	13.0						
15	12.8	12.9	12.7	12.1	11.5	11.1	12.6	12.3	11.8	12.0	12.5	13.0						
20	12.4	12.6	12.4	11.6	10.9	10.5	12.2	11.8	11.2	11.5	12.2	12.9						
25	11.9	12.1	12.0	11.1	10.2	9.69	11.6	11.2	10.5	10.9	11.8	12.7						
30	11.3	11.6	11.5	10.4	9.48	8.86	11.0	10.5	9.78	10.3	11.3	12.4						
35	10.6	11.0	10.9	9.67	8.67	7.95	10.3	9.72	9.00	9.48	10.8	11.9						
40	9.84	10.2	10.2	8.84	7.80	7.00	9.47	8.87	8.15	8.63	10.2	11.4						
45	9.00	9.41	9.51	7.94	6.86	5.99	8.59	7.94	7.25	7.71	9.53	10.8						
50	8.09	8.53	8.71	6.98	5.90	4.95	7.65	6.97	6.30	6.74	8.77	10.1						
55	7.12	7.59	7.85	5.99	4.88	3.88	6.66	5.95	5.30	5.70	7.94	9.29						
60	6.13	6.62	6.93	4.94	3.85	2.81	5.61	4.85	4.26	4.66	7.05	8.43						
65	5.07	5.59	5.96	3.88	2.80	1.80	4.53	3.75	3.21	3.59	6.12	7.52						
70	4.00	4.53	4.96	2.81	1.80	0.98	3.45	2.65	2.17	2.51	5.14	6.57						
75	2.95	3.46	3.96	1.79	0.94	0.41	2.38	1.63	1.22	1.51	4.12	5.55						
80	1.93	2.39	2.92	0.86	0.36	0.17	1.42	0.83	0.46	0.62	3.09	4.51						
85	1.06	1.40	1.92	0.16	0.19	0.17	0.68	0.33	0.11	0.07	2.07	3.46						
90	0.50	0.63	1.01	0.08	0.17	0.17	0.23	0.14	0.10	0.02	1.13	2.40						
95	0.22	0.24	0.38	0.10	0.13	0.17	0.11	0.13	0.10	0.02	0.39	1.43						
100	0.13	0.15	0.17	0.11	0.13	0.17	0.09	0.12	0.10	0.02	0.08	0.61						
105	0.13	0.14	0.14	0.11	0.14	0.17	0.07	0.10	0.10	0.04	0.06	0.26						
110	0.13	0.14	0.10	0.12	0.14	0.17	0.05	0.07	0.13	0.05	0.06	0.11						
115	0.15	0.11	0.06	0.12	0.14	0.17	0.03	0.04	0.10	0.05	0.06	0.06						
120	0.02	0.03	0.02	0.04	0.15	0.17	0.01	0.01	0.03	0.05	0.06	0.01						
125	0.00	0.00	0.00	0.00	0.00	0.00	0.00	0.00	0.00	0.00	0.00	0.00						
130	0.00	0.00	0.00	0.00	0.00	0.00	0.00	0.00	0.00	0.00	0.00	0.00						
135	0.00	0.00	0.00	0.00	0.00	0.00	0.00	0.00	0.00	0.00	0.00	0.00						
140	0.00	0.00	0.00	0.00	0.00	0.00	0.00	0.00	0.00	0.00	0.00	0.00						
145	0.00	0.00	0.00	0.00	0.00	0.00	0.00	0.00	0.00	0.00	0.00	0.00						
150	0.00	0.00	0.00	0.00	0.00	0.00	0.00	0.00	0.00	0.00	0.00	0.00						
155	0.00	0.00	0.00	0.00	0.00	0.00	0.00	0.00	0.00	0.00	0.00	0.00						
160	0.00	0.00	0.00	0.00	0.00	0.00	0.00	0.00	0.00	0.00	0.00	0.00						
165	0.00	0.00	0.00	0.00	0.00	0.00	0.00	0.00	0.00	0.00	0.00	0.00						
170	0.00	0.00	0.00	0.00	0.00	0.00	0.00	0.00	0.00	0.00	0.00	0.00						
175	0.00	0.00	0.00	0.00	0.00	0.00	0.00	0.00	0.00	0.00	0.00	0.00						
180	0.00	0.00	0.00	0.00	0.00	0.00	0.00	0.00	0.00	0.00	0.00	0.00						

C Range: 0 - 360DEG
C Interval: 30.0DEG
Test Speed: HIGH
Temperature:25.3DEG
Operators:LPC
Test Date:2021-12-21

γ Range: 0 - 120DEG
γ Interval: 1.0DEG
Test System:EVERFINE GO-2000B_V1 SYSTEM V2.0.362
Humidity:65.0%
Test Distance:9.200m [K=1.0000]
Remarks:

Photometric Data Table [cd]

G/C	0.0	30.0	60.0	90.0	120.0	150.0	180.0	210.0	240.0	270.0
0.0	13.22	13.21	12.77	12.58	12.59	12.57	13.22	13.21	12.77	12.58
3.0	13.22	13.21	12.84	12.57	12.46	12.35	13.18	13.12	12.66	12.58
6.0	13.22	13.19	12.86	12.51	12.28	12.10	13.10	12.99	12.50	12.56
9.0	13.11	13.14	12.86	12.41	12.07	11.81	12.97	12.82	12.31	12.43
12.0	12.97	13.05	12.85	12.26	11.82	11.49	12.81	12.61	12.06	12.25
15.0	12.79	12.91	12.74	12.05	11.51	11.13	12.59	12.34	11.78	12.02
18.0	12.57	12.73	12.58	11.80	11.16	10.73	12.35	12.05	11.44	11.76
21.0	12.30	12.51	12.37	11.53	10.78	10.31	12.06	11.73	11.06	11.42
24.0	12.00	12.24	12.12	11.19	10.37	9.839	11.75	11.34	10.67	11.08
27.0	11.68	11.92	11.84	10.82	9.938	9.361	11.39	10.95	10.24	10.68
30.0	11.30	11.60	11.52	10.42	9.480	8.864	11.00	10.51	9.779	10.25
33.0	10.90	11.22	11.16	9.985	9.003	8.321	10.58	10.06	9.316	9.802
36.0	10.47	10.80	10.79	9.502	8.500	7.763	10.12	9.560	8.833	9.309
39.0	9.998	10.38	10.38	9.019	7.973	7.200	9.632	9.048	8.326	8.807
42.0	9.506	9.904	9.953	8.492	7.425	6.617	9.130	8.515	7.793	8.279
45.0	8.998	9.407	9.505	7.944	6.862	5.994	8.592	7.942	7.245	7.711
48.0	8.455	8.899	9.038	7.381	6.294	5.375	8.034	7.349	6.677	7.123
51.0	7.898	8.346	8.546	6.793	5.701	4.732	7.451	6.752	6.099	6.531
54.0	7.319	7.783	8.033	6.195	5.088	4.089	6.853	6.143	5.496	5.932
57.0	6.736	7.205	7.485	5.587	4.470	3.456	6.240	5.495	4.888	5.264
60.0	6.128	6.622	6.927	4.943	3.852	2.812	5.611	4.852	4.265	4.656
63.0	5.500	6.004	6.370	4.305	3.224	2.199	4.963	4.209	3.631	4.012
66.0	4.852	5.381	5.762	3.672	2.595	1.617	4.310	3.535	2.998	3.359
69.0	4.214	4.737	5.163	3.023	1.992	1.114	3.662	2.872	2.370	2.751
72.0	3.596	4.094	4.571	2.385	1.434	0.7074	3.008	2.254	1.762	2.093
75.0	2.947	3.456	3.962	1.793	0.9415	0.4117	2.375	1.630	1.220	1.510
78.0	2.329	2.807	3.334	1.245	0.5440	0.2258	1.772	1.147	0.7174	0.9715
81.0	1.736	2.174	2.721	0.6921	0.3021	0.1658	1.250	0.6997	0.3559	0.4787
84.0	1.213	1.576	2.113	0.2702	0.1962	0.1658	0.8077	0.4080	0.1304	0.1218
87.0	0.7955	1.049	1.545	0.0754	0.1870	0.1658	0.4615	0.2166	0.0955	0.0304
90.0	0.4985	0.6323	1.012	0.0754	0.1652	0.1658	0.2257	0.1409	0.0955	0.0201
93.0	0.3021	0.3562	0.5742	0.0805	0.1356	0.1658	0.1205	0.1300	0.0955	0.0201
96.0	0.1864	0.2005	0.3123	0.1006	0.1331	0.1658	0.1080	0.1278	0.0955	0.0201
99.0	0.1408	0.1524	0.1963	0.1056	0.1335	0.1658	0.0956	0.1257	0.0955	0.0201
102.0	0.1308	0.1477	0.1659	0.1122	0.1352	0.1658	0.0831	0.1181	0.0955	0.0400
105.0	0.1307	0.1430	0.1358	0.1147	0.1369	0.1658	0.0706	0.1028	0.0955	0.0402
108.0	0.1307	0.1382	0.1118	0.1172	0.1387	0.1658	0.0582	0.0835	0.1106	0.0452
111.0	0.1357	0.1335	0.0879	0.1198	0.1405	0.1658	0.0457	0.0642	0.1277	0.0452
114.0	0.1432	0.1288	0.0639	0.1223	0.1422	0.1658	0.0332	0.0450	0.1170	0.0503
117.0	0.0971	0.0805	0.0399	0.1033	0.1440	0.1658	0.0208	0.0257	0.0732	0.0503
120.0	0.0243	0.0322	0.0160	0.0413	0.1457	0.1658	0.0083	0.0064	0.0293	0.0503
G/C	300.0	330.0								
0.0	12.59	12.57								
3.0	12.69	12.74								
6.0	12.70	12.88								
9.0	12.70	12.96								
12.0	12.64	13.00								
15.0	12.52	12.99								
18.0	12.36	12.98								
21.0	12.17	12.86								
24.0	11.92	12.73								
27.0	11.63	12.57								
30.0	11.32	12.38								
33.0	10.99	12.13								
36.0	10.65	11.86								
39.0	10.30	11.54								
42.0	9.920	11.17								
45.0	9.527	10.79								
48.0	9.090	10.37								
51.0	8.612	9.922								
54.0	8.110	9.455								
57.0	7.592	8.962								
60.0	7.049	8.430								
63.0	6.506	7.897								
66.0	5.928	7.329								
69.0	5.335	6.741								
72.0	4.732	6.169								
75.0	4.124	5.550								
78.0	3.506	4.927								
81.0	2.888	4.294								
84.0	2.274	3.666								
87.0	1.682	3.028								
90.0	1.134	2.404								

C Range: 0 - 360DEG
 C Interval: 30.0DEG
 Test Speed: HIGH
 Temperature: 25.3DEG
 Operators: LPC
 Test Date: 2021-12-21

γ Range: 0 - 120DEG
 γ Interval: 1.0DEG
 Test System: EVERFINE GO-2000B_V1 SYSTEM V2.0.362
 Humidity: 65.0%
 Test Distance: 9.200m [K=1.0000]
 Remarks:

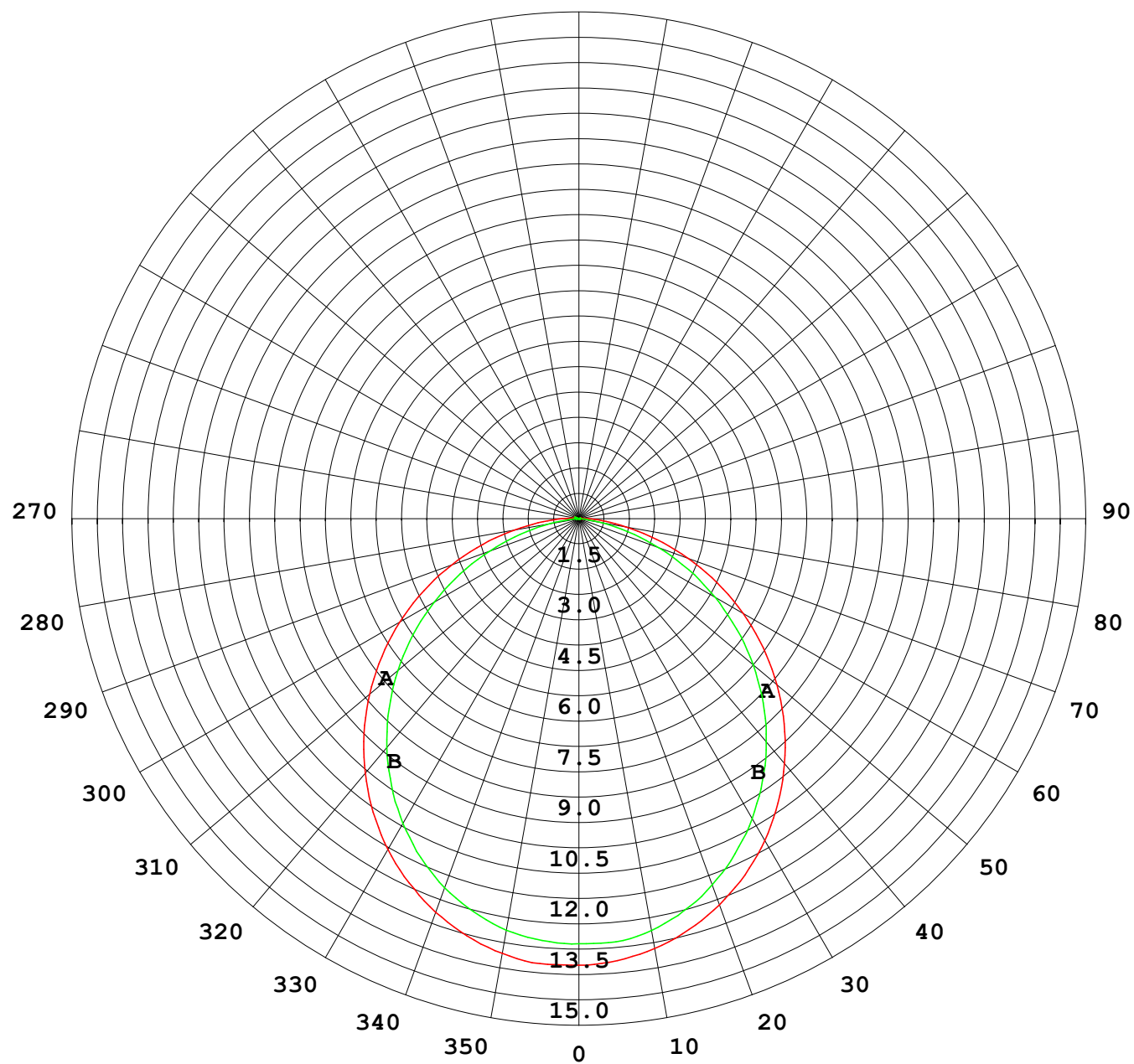
Photometric Data Table [cd]

93.0	0.6420	1.801
96.0	0.2906	1.258
99.0	0.1103	0.7755
102.0	0.0603	0.4380
105.0	0.0603	0.2618
108.0	0.0603	0.1461
111.0	0.0603	0.1056
114.0	0.0603	0.0739
117.0	0.0553	0.0422
120.0	0.0553	0.0106

C Range: 0 - 360DEG
C Interval: 30.0DEG
Test Speed: HIGH
Temperature: 25.3DEG
Operators: LPC
Test Date: 2021-12-21

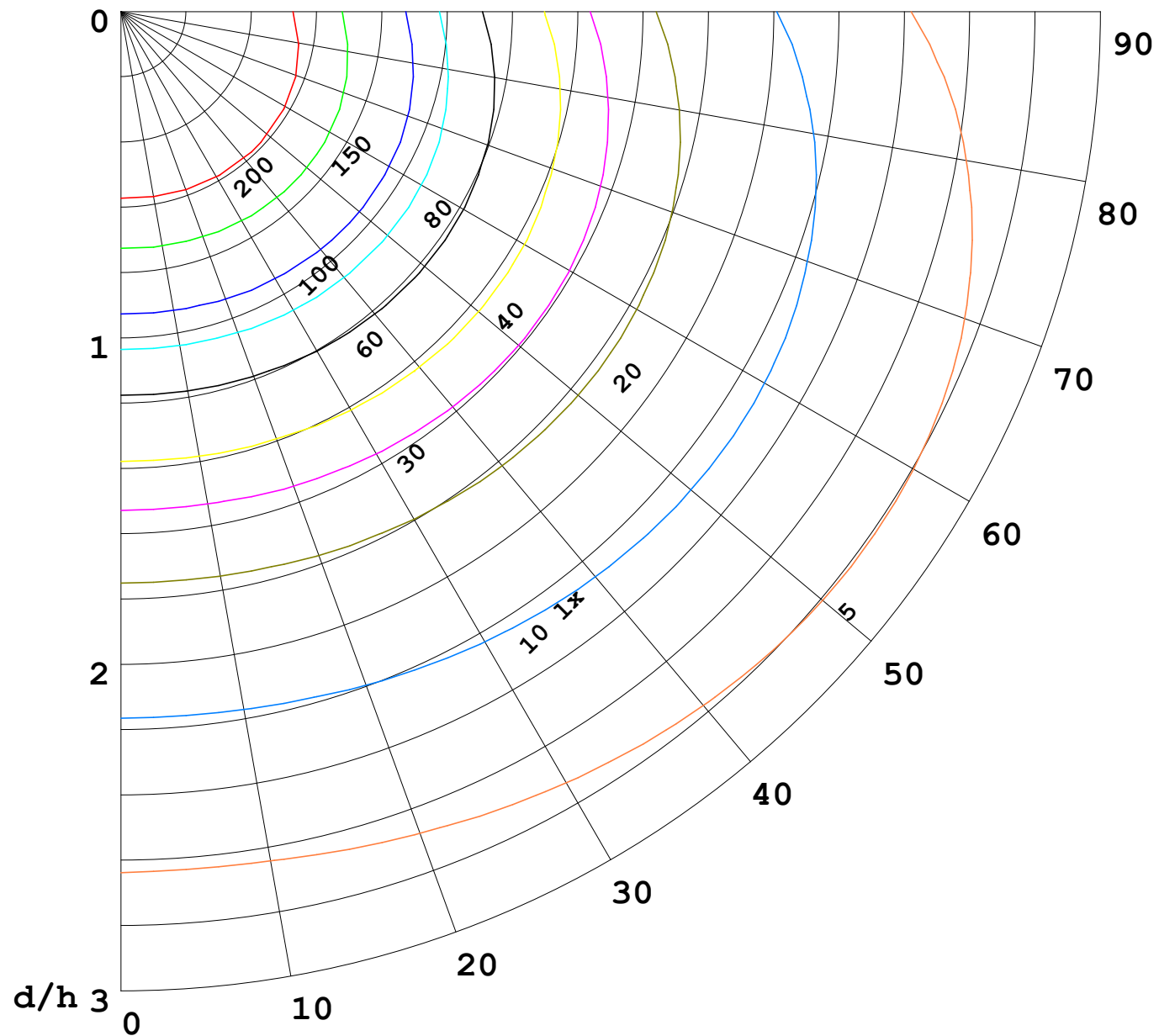
γ Range: 0 - 120DEG
γ Interval: 1.0DEG
Test System: EVERFINE GO-2000B_V1 SYSTEM V2.0.362
Humidity: 65.0%
Test Distance: 9.200m [K=1.0000]
Remarks:

I (cd)



1000 lm

$\kappa = 1$



F = 5000 lm
 K = 0.7
 Hcc = 0.0 m
 Hfc = 0.0 m
 Eave = 100 lx

	Pcc	Pw	Pfc
—	70	50	30
—	50	30	20

