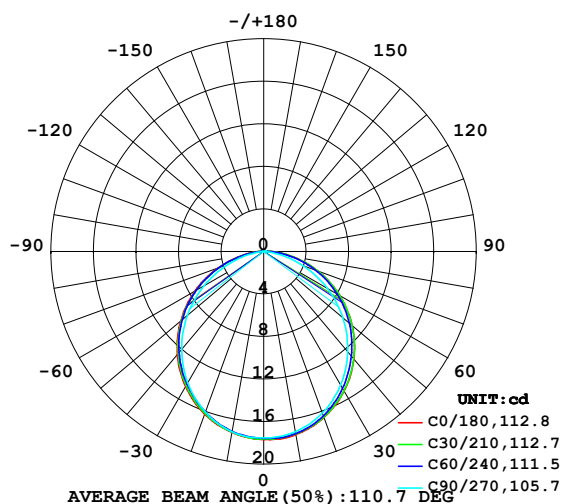


## LUMINAIRE PHOTOMETRIC TEST REPORT

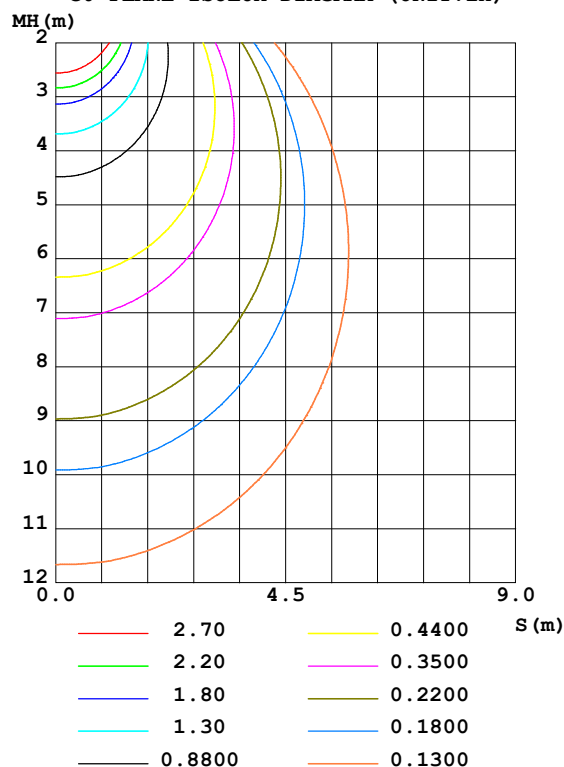
Test:U:24.00V I:0.2322A P:5.573W PF:1.000 Freq:50.00Hz Lamp Flux:50.1919x1 lm		
NAME: SF15-24V-3528-72-P	TYPE: 硅胶	WEIGHT:
SPEC.:	DIM.: 21mm*11.5mm	SERIAL No.:2021122202
MFR.: OLYMPIA	SUR.:1*0.0115	Shielding Angle:

DATA OF LAMP		PHOTOMETRIC DATA				Eff: 9.01 lm/W
MODEL	3528	I <sub>max</sub> (cd)	17.70	S/MH (C0/180)	1.24	
NOMINAL POWER (W)	5	LOR (%)	100.0	S/MH (C90/270)	1.22	
RATED VOLTAGE (V)	24	TOTAL FLUX (lm)	50.192	η UP, DN (C0-180)	0.7, 49.6	
NOMINAL FLUX (lm)	50.1919	CIE CLASS	DIRECT	η UP, DN (C180-360)	0.4, 49.3	
LAMPS INSIDE	1	η up (%)	1.1	CIBSE SHR NOM	1.25	
TEST VOLTAGE (V)	24	η down (%)	98.9	CIBSE SHR MAX	1.35	

LUMINOUS INTENSITY DISTRIBUTION DIAGRAM



C0 PLANE ISOLUX DIAGRAM (UNIT:lx)



C Range: 0 - 360DEG  
C Interval: 30.0DEG  
Test Speed: HIGH  
Temperature: 25.3DEG  
Operators: LPC  
Test Date: 2021-12-22

γ Range: 0 - 120DEG  
γ Interval: 1.0DEG  
Test System: EVERFINE GO-2000B\_V1 SYSTEM V2.0.362  
Humidity: 65.0%  
Test Distance: 9.200m [K=1.0000]  
Remarks:

## ZONAL FLUX DIAGRAM

## ZONAL FLUX DIAGRAM:

$\gamma$	C0	C45	C90	C135	C180	C225	C270	C315	$\gamma$	$\Phi$ zone	$\Phi$ total	%lum, lamp
10	17.48	17.41	17.22	17.03	17.28	17.22	17.22	17.33	0- 10	1.663	1.663	3.31,3.31
20	16.61	16.51	16.16	15.92	16.27	16.11	16.07	16.40	10- 20	4.751	6.414	12.8,12.8
30	15.15	14.98	14.49	14.28	14.68	14.50	14.29	14.90	20- 30	7.151	13.56	27,27
40	13.20	13.00	12.30	12.20	12.64	12.45	12.01	13.01	30- 40	8.565	22.13	44.1,44.1
50	10.87	10.69	9.727	9.758	10.20	10.05	9.371	10.83	40- 50	8.849	30.98	61.7,61.7
60	8.240	8.116	6.888	7.041	7.475	7.340	6.481	8.292	50- 60	7.974	38.95	77.6,77.6
70	5.426	5.340	3.932	4.179	4.580	4.445	3.536	5.558	60- 70	6.076	45.03	89.7,89.7
80	2.641	2.568	1.219	1.553	1.887	1.714	0.8966	2.774	70- 80	3.497	48.53	96.7,96.7
90	0.7048	0.5429	0.1699	0.2815	0.3560	0.2289	0.0452	0.6033	80- 90	1.122	49.65	98.9,98.9
100	0.1912	0.2265	0.1658	0.2433	0.1508	0.1598	0.0452	0.1695	90-100	0.2575	49.91	99.4,99.4
110	0.1999	0.1672	0.1930	0.1958	0.0823	0.1284	0.0653	0.1177	100-110	0.1722	50.08	99.8,99.8
120	0.0410	0.0407	0.0651	0.0420	0.0137	0.0289	0.1257	0.0254	110-120	0.1109	50.19	100,100
130	0	0	0	0	0	0	0	0	120-130	0.0034	50.19	100,100
140	0	0	0	0	0	0	0	0	130-140	0	50.19	100,100
150	0	0	0	0	0	0	0	0	140-150	0	50.19	100,100
160	0	0	0	0	0	0	0	0	150-160	0	50.19	100,100
170	0	0	0	0	0	0	0	0	160-170	0	50.19	100,100
180	0	0	0	0	0	0	0	0	170-180	0	50.19	100,100
DEG	LUMINOUS INTENSITY:cd									UNIT:lm		

Conical surface Flux(90deg): 26.591 lm

%lum = 53.0%

%lamp = 53.0%

Conical surface Flux(120deg): 38.953 lm

%lum = 77.6%

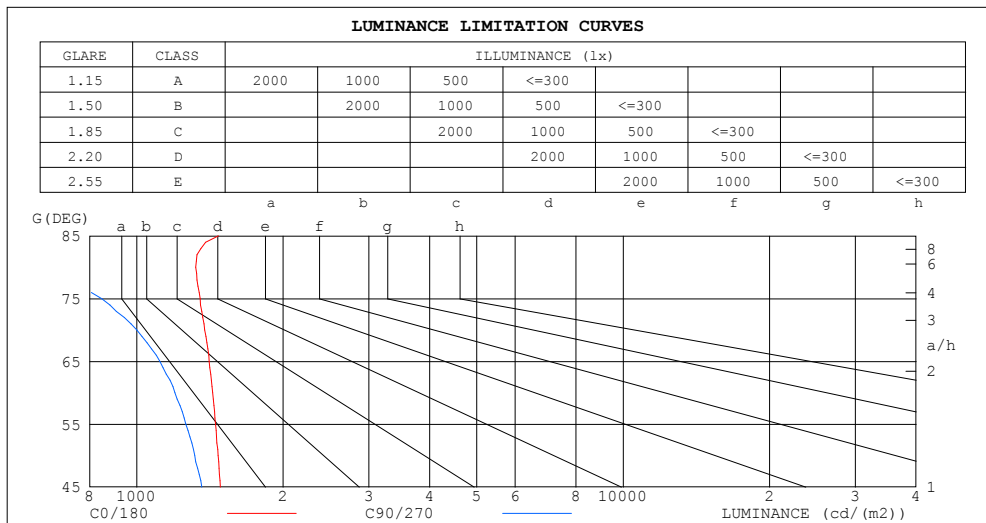
%lamp = 77.6%

C Range: 0 - 360DEG  
 C Interval: 30.0DEG  
 Test Speed: HIGH  
 Temperature:25.3DEG  
 Operators:LPC  
 Test Date:2021-12-22

$\gamma$  Range: 0 - 120DEG  
 $\gamma$  Interval: 1.0DEG  
 Test System:EVERFINE GO-2000B\_V1 SYSTEM V2.0.362  
 Humidity:65.0%  
 Test Distance:9.200m [K=1.0000]  
 Remarks:

## LUMINANCE LIMITATION CURVES

Test:U:24.00V I:0.2322A P:5.573W PF:1.000 Freq:50.00Hz Lamp Flux:50.1919x1 lm		
NAME: SF15-24V-3528-72-P	TYPE: 硅胶	WEIGHT:
SPEC.:	DIM.: 21mm*11.5mm	SERIAL No.:2021122202
MFR.: OLYMPIA	SUR.:1*0.0115	Shielding Angle:



LUMINANCE cd/(m2)		
G (DEG)	C0/180	C90/270
85	1471	235
80	1323	610
75	1350	847
70	1379	1000
65	1408	1116
60	1433	1198
55	1453	1262
50	1470	1316
45	1485	1361

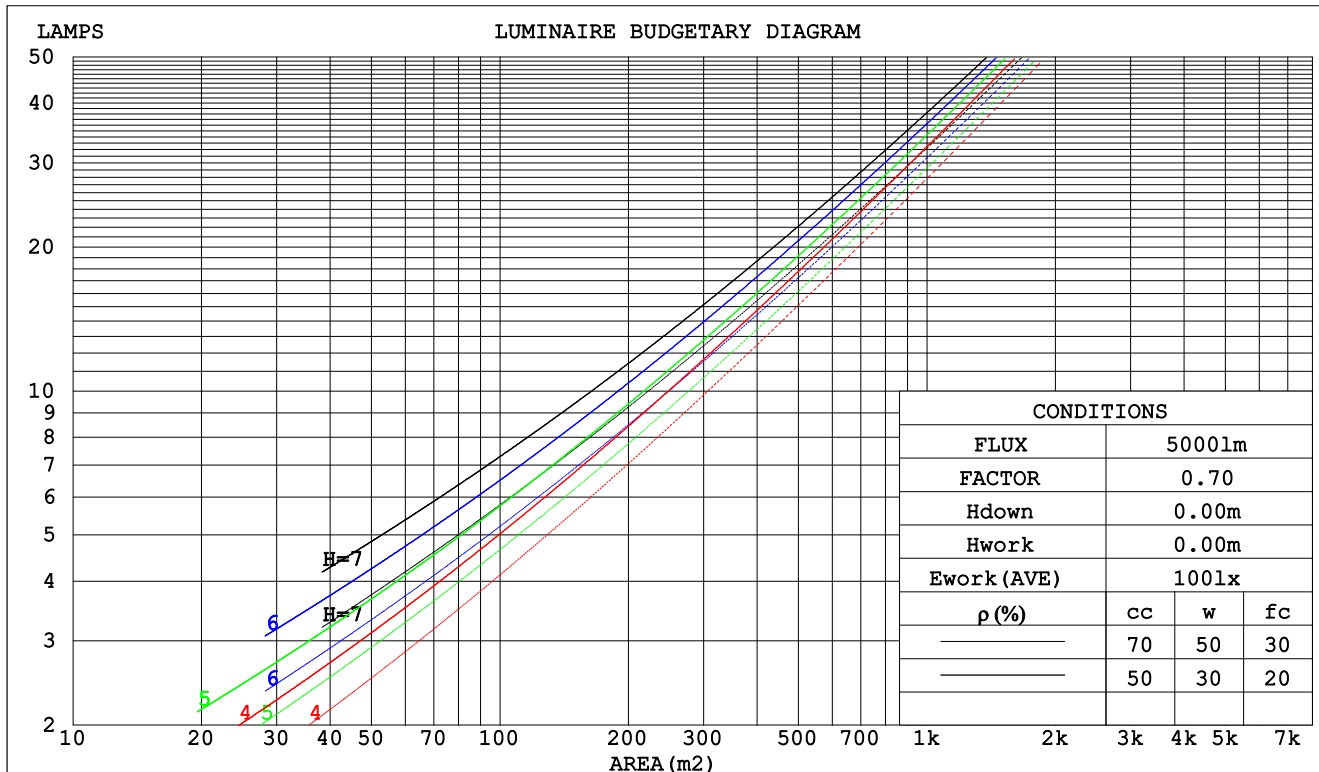
C Range: 0 - 360DEG  
C Interval: 30.0DEG  
Test Speed: HIGH  
Temperature:25.3DEG  
Operators:LPC  
Test Date:2021-12-22

$\gamma$  Range: 0 - 120DEG  
 $\gamma$  Interval: 1.0DEG  
Test System:EVERFINE GO-2000B\_V1 SYSTEM V2.0.362  
Humidity:65.0%  
Test Distance:9.200m [K=1.0000]  
Remarks:

## CU AND LUMINAIRE BUDGETARY ESTIMATE DIAGRAM

Test:U:24.00V I:0.2322A P:5.573W PF:1.000 Freq:50.00Hz Lamp Flux:50.1919x1 lm		
NAME: SF15-24V-3528-72-P	TYPE: 硅胶	WEIGHT:
SPEC.:	DIM.: 21mm*11.5mm	SERIAL No.:2021122202
MFR.: OLYMPIA	SUR.:1*0.0115	Shielding Angle:

pcc	80%			70%			50%			30%			10%			0
pw	50%	30%	10%	50%	30%	10%	50%	30%	10%	50%	30%	10%	50%	30%	10%	0
pfc	20%			20%			20%			20%			20%			0
RCR	RCR:Room Cavity Ratio						Coefficients of Utilization(CU)									
0.0	1.19	1.19	1.19	1.16	1.16	1.16	1.11	1.11	1.11	1.06	1.06	1.06	1.01	1.01	1.01	.99
1.0	1.03	.99	.95	1.01	.97	.94	.97	.93	.90	.93	.90	.87	.89	.87	.85	.82
2.0	.90	.83	.77	.88	.82	.76	.84	.79	.74	.81	.76	.73	.78	.74	.71	.69
3.0	.79	.71	.64	.77	.70	.64	.74	.68	.62	.71	.66	.61	.69	.64	.60	.58
4.0	.70	.61	.54	.69	.60	.54	.66	.59	.53	.63	.57	.52	.61	.56	.51	.49
5.0	.63	.53	.47	.61	.53	.46	.59	.52	.46	.57	.50	.45	.55	.49	.45	.42
6.0	.56	.47	.41	.55	.47	.41	.53	.46	.40	.52	.45	.40	.50	.44	.39	.37
7.0	.51	.42	.36	.50	.42	.36	.48	.41	.36	.47	.40	.35	.45	.39	.35	.33
8.0	.47	.38	.32	.46	.38	.32	.44	.37	.32	.43	.36	.31	.42	.36	.31	.29
9.0	.43	.34	.29	.42	.34	.29	.41	.34	.29	.40	.33	.28	.39	.33	.28	.26
10.0	.39	.31	.26	.39	.31	.26	.38	.31	.26	.37	.30	.26	.36	.30	.26	.24



C Range: 0 - 360DEG  
 C Interval: 30.0DEG  
 Test Speed: HIGH  
 Temperature:25.3DEG  
 Operators:LPC  
 Test Date:2021-12-22

γ Range: 0 - 120DEG  
 γ Interval: 1.0DEG  
 Test System:EVERFINE GO-2000B\_V1 SYSTEM V2.0.362  
 Humidity:65.0%  
 Test Distance:9.200m [K=1.0000]  
 Remarks:

## WEC AND CCEC

Test:U:24.00V I:0.2322A P:5.573W PF:1.000 Freq:50.00Hz Lamp Flux:50.1919x1 lm		
NAME: SF15-24V-3528-72-P	TYPE: 硅胶	WEIGHT:
SPEC.:	DIM.: 21mm*11.5mm	SERIAL No.:2021122202
MFR.: OLYMPIA	SUR.:1*0.0115	Shielding Angle:

pcc	80%			70%			50%			30%			10%			0	
pw	50%	30%	10%	50%	30%	10%	50%	30%	10%	50%	30%	10%	50%	30%	10%	0	
pfc	20%			20%			20%			20%			20%			0	
RCR	RCR:Room Cavity Ratio						Wall Exitance Coeffcients (WEC)										
0.0																	
1.0	.313	.178	.056	.305	.174	.055	.292	.167	.053	.279	.161	.052	.267	.155	.050		
2.0	.293	.160	.049	.286	.158	.049	.274	.152	.047	.263	.147	.046	.252	.143	.045		
3.0	.270	.144	.043	.265	.142	.043	.254	.137	.042	.244	.133	.041	.234	.130	.040		
4.0	.249	.130	.038	.244	.128	.038	.234	.124	.037	.225	.121	.037	.217	.118	.036		
5.0	.230	.117	.034	.226	.116	.034	.217	.113	.033	.209	.110	.033	.202	.108	.032		
6.0	.213	.107	.031	.209	.106	.030	.202	.103	.030	.195	.101	.030	.188	.099	.029		
7.0	.199	.098	.028	.195	.097	.028	.188	.095	.027	.182	.093	.027	.176	.091	.027		
8.0	.185	.091	.025	.182	.090	.025	.176	.088	.025	.170	.086	.025	.165	.085	.025		
9.0	.174	.084	.023	.171	.083	.023	.165	.082	.023	.160	.080	.023	.155	.079	.023		
10.0	.163	.078	.022	.161	.078	.022	.156	.076	.021	.151	.075	.021	.146	.074	.021		

pcc	80%			70%			50%			30%			10%			0
pw	50%	30%	10%	50%	30%	10%	50%	30%	10%	50%	30%	10%	50%	30%	10%	0
pfc	20%			20%			20%			20%			20%			0
RCR	RCR:Room Cavity Ratio						Ceiling Cavity Exitance Coefficients(CCEC)									
0.0	.199	.199	.199	.170	.170	.170	.116	.116	.116	.067	.067	.067	.021	.021	.021	
1.0	.189	.164	.142	.162	.141	.123	.111	.097	.085	.064	.056	.049	.020	.018	.016	
2.0	.181	.140	.106	.155	.121	.092	.106	.084	.064	.061	.049	.038	.020	.016	.012	
3.0	.173	.123	.083	.148	.106	.072	.102	.074	.050	.059	.043	.030	.019	.014	.010	
4.0	.165	.109	.067	.142	.095	.058	.098	.066	.041	.056	.039	.024	.018	.013	.008	
5.0	.158	.099	.056	.136	.086	.048	.093	.060	.034	.054	.035	.020	.017	.011	.007	
6.0	.151	.091	.048	.130	.079	.042	.089	.055	.029	.052	.032	.017	.017	.011	.006	
7.0	.144	.084	.042	.124	.073	.036	.086	.051	.026	.050	.030	.015	.016	.010	.005	
8.0	.137	.078	.037	.118	.068	.033	.082	.048	.023	.048	.028	.014	.015	.009	.005	
9.0	.131	.073	.034	.113	.063	.029	.078	.045	.021	.046	.026	.012	.015	.009	.004	
10.0	.126	.069	.031	.108	.060	.027	.075	.042	.019	.044	.025	.011	.014	.008	.004	

C Range: 0 - 360DEG  
 C Interval: 30.0DEG  
 Test Speed: HIGH  
 Temperature:25.3DEG  
 Operators:LPC  
 Test Date:2021-12-22

γ Range: 0 - 120DEG  
 γ Interval: 1.0DEG  
 Test System:EVERFINE GO-2000B\_V1 SYSTEM V2.0.362  
 Humidity:65.0%  
 Test Distance:9.200m [K=1.0000]  
 Remarks:

UGR(Unified Glare Rating) Table

Test:U:24.00V I:0.2322A P:5.573W PF:1.000 Freq:50.00Hz Lamp Flux:50.1919x1 lm										
NAME: SF15-24V-3528-72-P					TYPE: 硅胶			WEIGHT:		
SPEC.:					DIM.: 21mm*11.5mm			SERIAL No.:2021122202		
MFR.: OLYMPIA					SUR.:1*0.0115			Shielding Angle:		
ceiling/cavity	0.7	0.7	0.5	0.5	0.3	0.7	0.7	0.5	0.5	0.3
walls	0.5	0.3	0.5	0.3	0.3	0.5	0.3	0.5	0.3	0.3
working plane	0.2	0.2	0.2	0.2	0.2	0.2	0.2	0.2	0.2	0.2
Room dimensions	Viewed crosswise					Viewed endwise				
x = 2H y = 2H	24.8	26.3	25.0	26.5	26.7	24.2	25.7	24.5	25.9	26.2
3H	26.4	27.8	26.7	28.1	28.3	25.6	27.0	25.9	27.2	27.5
4H	27.2	28.5	27.5	28.7	29.0	26.1	27.4	26.4	27.7	27.9
6H	27.7	29.0	28.1	29.3	29.6	26.3	27.6	26.7	27.9	28.2
8H	28.0	29.2	28.3	29.5	29.8	26.3	27.5	26.7	27.9	28.2
12H	28.1	29.3	28.5	29.6	29.9	26.3	27.5	26.7	27.8	28.1
4H 2H	25.4	26.7	25.7	27.0	27.3	25.0	26.3	25.3	26.6	26.9
3H	27.3	28.4	27.6	28.7	29.1	26.6	27.8	27.0	28.1	28.4
4H	28.1	29.2	28.5	29.5	29.9	27.2	28.3	27.6	28.6	29.0
6H	28.9	29.8	29.3	30.2	30.6	27.6	28.6	28.1	29.0	29.4
8H	29.1	30.0	29.6	30.4	30.8	27.7	28.6	28.2	29.0	29.4
12H	29.4	30.2	29.8	30.6	31.0	27.7	28.6	28.2	29.0	29.4
8H 4H	28.4	29.3	28.9	29.7	30.1	27.7	28.6	28.1	28.9	29.3
6H	29.3	30.1	29.8	30.5	30.9	28.3	29.0	28.8	29.5	29.9
8H	29.7	30.4	30.2	30.8	31.3	28.5	29.2	29.0	29.6	30.1
12H	30.1	30.7	30.6	31.2	31.7	28.6	29.2	29.1	29.6	30.1
12H 4H	28.4	29.3	28.9	29.7	30.1	27.7	28.5	28.2	28.9	29.4
6H	29.4	30.1	29.9	30.5	31.0	28.4	29.1	28.9	29.5	30.0
8H	29.9	30.4	30.4	30.9	31.4	28.7	29.3	29.2	29.7	30.2
Variations with the observer position at spacings:										
S = 1.0H	+ 0.1 / - 0.2					+ 0.2 / - 0.2				
1.5H	+ 0.2 / - 0.3					+ 0.2 / - 0.4				
2.0H	+ 0.1 / - 0.3					+ 0.2 / - 0.5				

CIE Pub.117, 50.19 lm Total Lamp Luminous Flux Correct (8log(F/F0) = -10.4)

C Range: 0 - 360DEG  
 C Interval: 30.0DEG  
 Test Speed: HIGH  
 Temperature:25.3DEG  
 Operators:LPC  
 Test Date:2021-12-22

$\gamma$  Range: 0 - 120DEG  
 $\gamma$  Interval: 1.0DEG  
 Test System:EVERFINE GO-2000B\_V1 SYSTEM V2.0.362  
 Humidity:65.0%  
 Test Distance:9.200m [K=1.0000]  
 Remarks:

## UTILIZATION FACTORS TABLE

Test:U:24.00V I:0.2322A P:5.573W PF:1.000 Freq:50.00Hz Lamp Flux:50.1919x1 lm		
NAME: SF15-24V-3528-72-P	TYPE: 硅胶	WEIGHT:
SPEC.:	DIM.: 21mm*11.5mm	SERIAL No.:2021122202
MFR.: OLYMPIA	SUR.:1*0.0115	Shielding Angle:

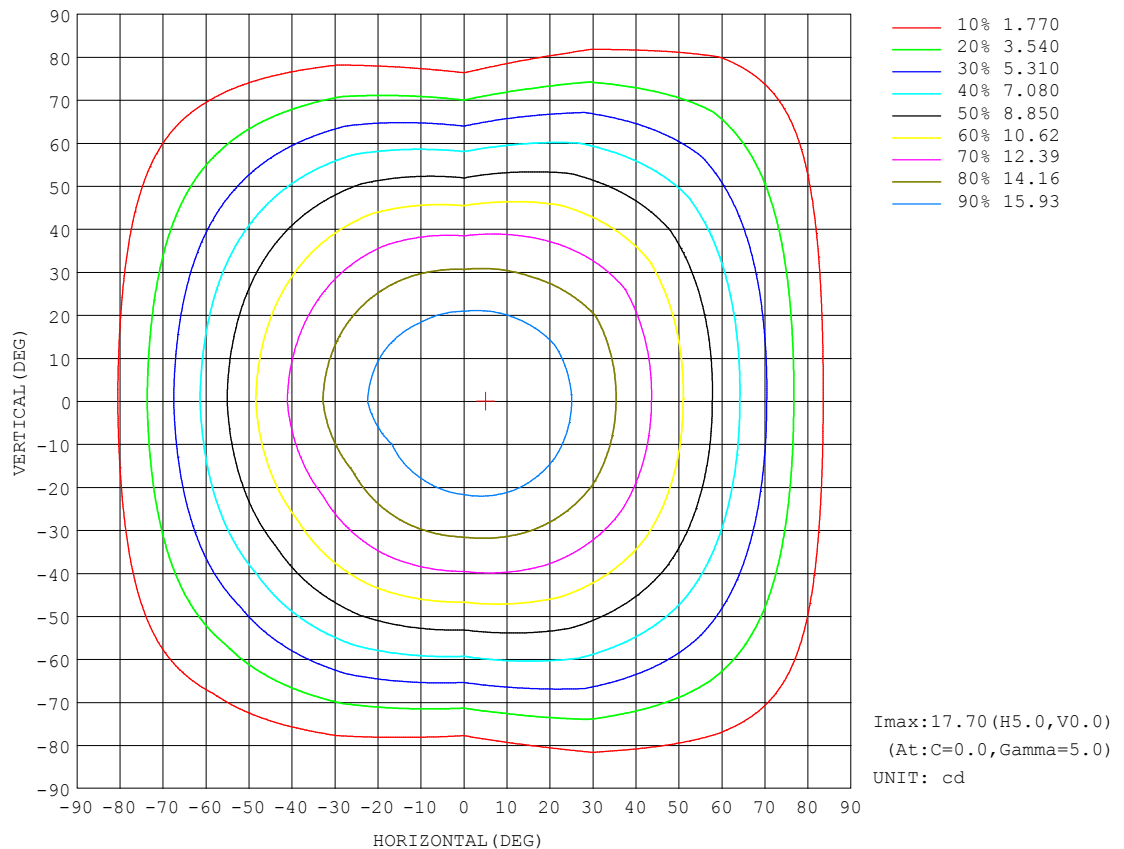
REFLECTANCE										
Ceiling	0.8	0.8	0.8	0.7	0.7	0.7	0.5	0.5	0.5	0
Walls	0.7	0.5	0.3	0.7	0.5	0.3	0.7	0.5	0.3	0
Working plane	0.2	0.2	0.2	0.2	0.2	0.2	0.2	0.2	0.2	0
ROOM INDEX	UTILIZATION FACTORS (PERCENT) $k(RI) \times RCR = 5$									
$k = 0.60$	57	46	39	56	45	38	55	45	38	32
0.80	67	55	48	66	55	48	64	54	47	41
1.00	75	64	57	74	64	57	72	65	56	49
1.25	83	72	65	81	71	64	78	70	64	56
1.50	88	78	70	86	77	70	83	75	69	61
2.00	94	86	79	93	84	78	89	82	77	69
2.50	98	90	84	96	89	83	92	86	81	73
3.00	102	95	89	99	93	88	95	90	86	77
4.00	106	100	95	103	98	94	99	95	91	82
5.00	108	103	99	106	101	97	101	97	94	85
ROOM INDEX	UF (total)									Direct
According to DIN EN 13032-2 2004			Suspended					SHRNOM = 1.25		

C Range: 0 - 360DEG  
 C Interval: 30.0DEG  
 Test Speed: HIGH  
 Temperature: 25.3DEG  
 Operators: LPC  
 Test Date: 2021-12-22

γ Range: 0 - 120DEG  
 γ Interval: 1.0DEG  
 Test System: EVERFINE GO-2000B\_V1 SYSTEM V2.0.362  
 Humidity: 65.0%  
 Test Distance: 9.200m [K=1.0000]  
 Remarks:

## ISOCANDELA DIAGRAM

Test:U:24.00V I:0.2322A P:5.573W PF:1.000 Freq:50.00Hz Lamp Flux:50.1919x1 lm		
NAME: SF15-24V-3528-72-P	TYPE: 硅胶	WEIGHT:
SPEC.:	DIM.: 21mm*11.5mm	SERIAL No.:2021122202
MFR.: OLYMPIA	SUR.:1*0.0115	Shielding Angle:



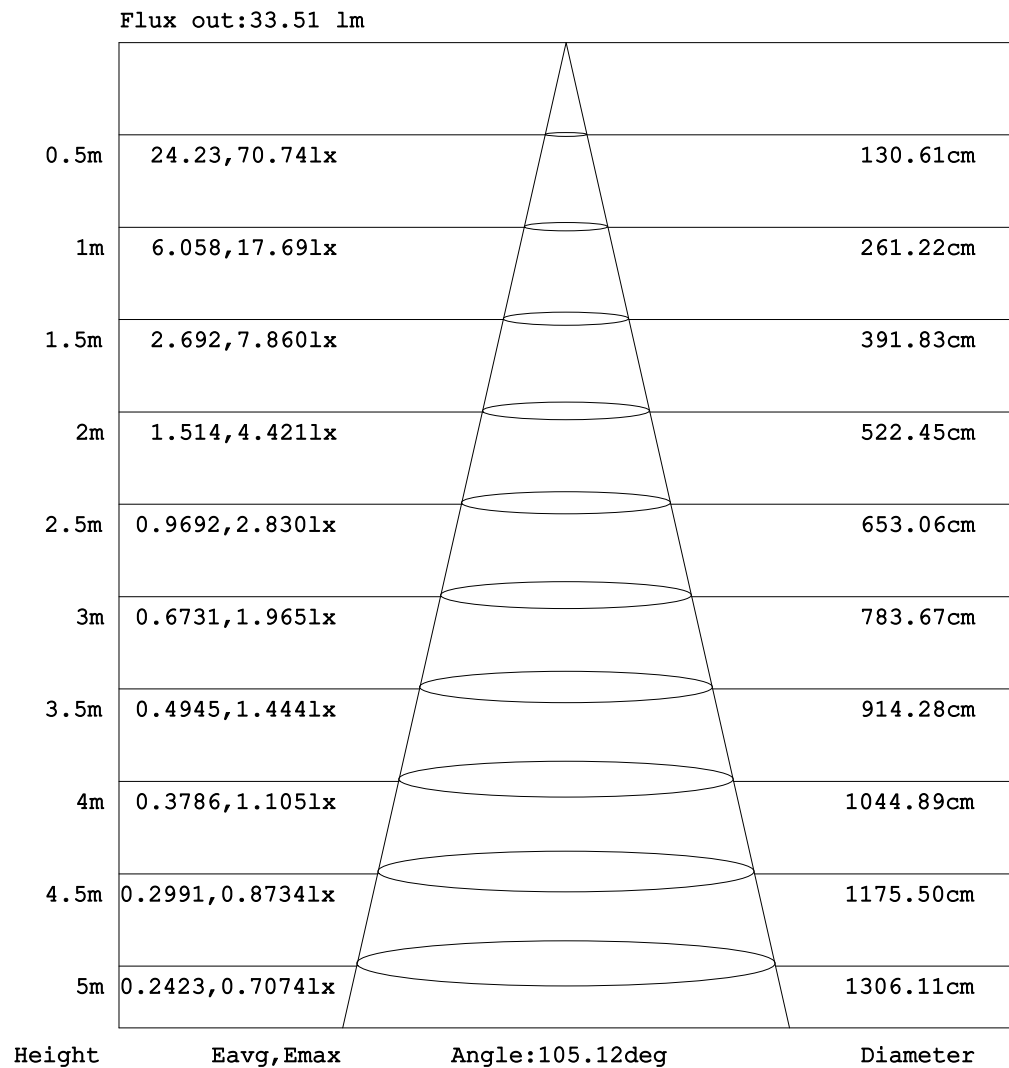
C Range: 0 - 360DEG  
C Interval: 30.0DEG  
Test Speed: HIGH  
Temperature:25.3DEG  
Operators:LPC  
Test Date:2021-12-22

$\gamma$  Range: 0 - 120DEG  
 $\gamma$  Interval: 1.0DEG  
Test System:EVERFINE GO-2000B\_V1 SYSTEM V2.0.362  
Humidity:65.0%  
Test Distance:9.200m [K=1.0000]  
Remarks:



## AAI Figure

Test:U:24.00V I:0.2322A P:5.573W PF:1.000 Freq:50.00Hz Lamp Flux:50.1919x1 lm		
NAME: SF15-24V-3528-72-P	TYPE: 硅胶	WEIGHT:
SPEC.:	DIM.: 21mm*11.5mm	SERIAL No.:2021122202
MFR.: OLYMPIA	SUR.:1*0.0115	Shielding Angle:



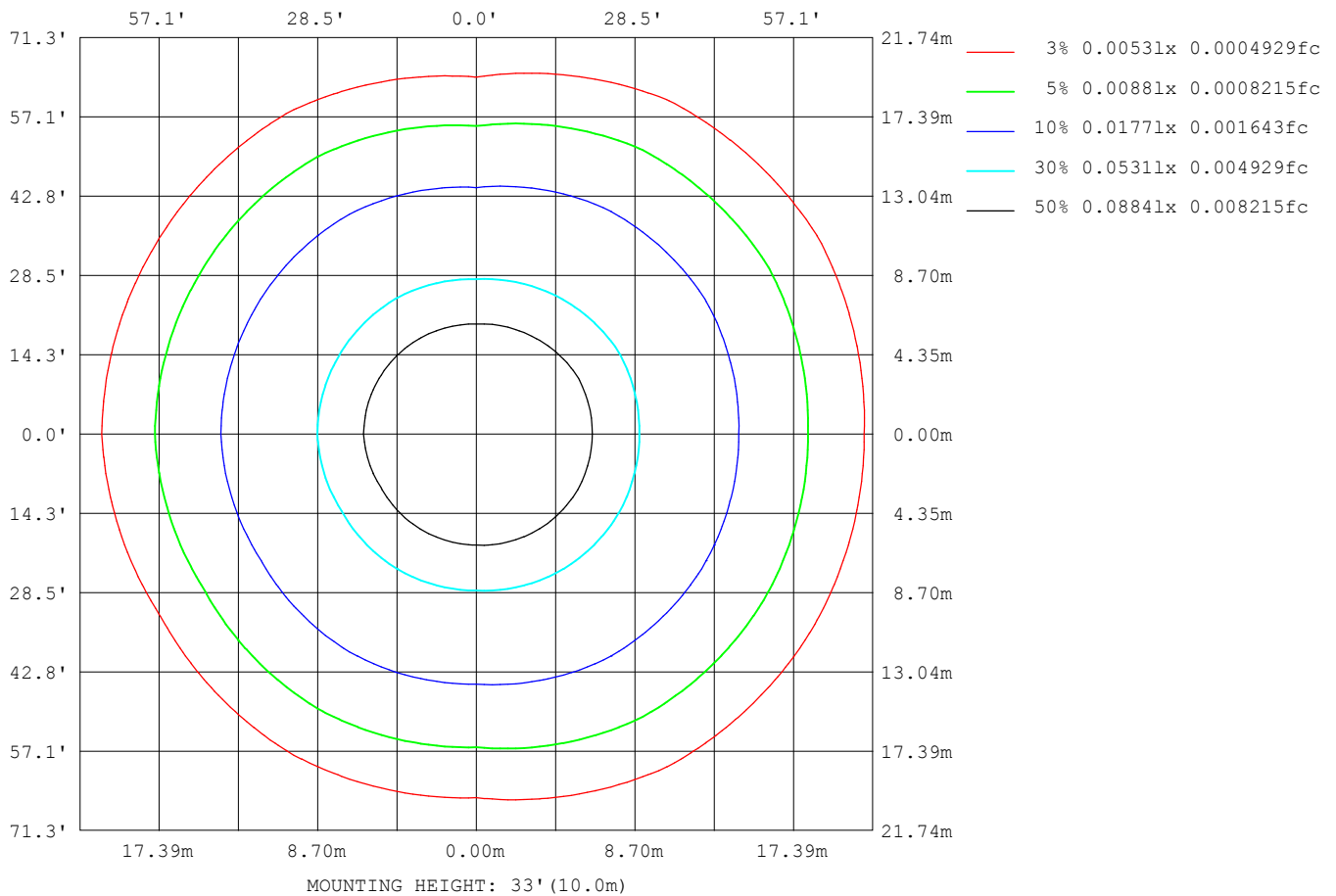
Note: The Curves indicate the illuminated area and the average illumination when the luminaire is at different distance.

C Range: 0 - 360DEG  
 C Interval: 30.0DEG  
 Test Speed: HIGH  
 Temperature: 25.3DEG  
 Operators: LPC  
 Test Date: 2021-12-22

γ Range: 0 - 120DEG  
 γ Interval: 1.0DEG  
 Test System: EVERFINE GO-2000B\_V1 SYSTEM V2.0.362  
 Humidity: 65.0%  
 Test Distance: 9.200m [K=1.0000]  
 Remarks:

## ISOLUX DIAGRAM

Test:U:24.00V I:0.2322A P:5.573W PF:1.000 Freq:50.00Hz Lamp Flux:50.1919x1 lm		
NAME: SF15-24V-3528-72-P	TYPE: 硅胶	WEIGHT:
SPEC.:	DIM.: 21mm*11.5mm	SERIAL No.:2021122202
MFR.: OLYMPIA	SUR.:1*0.0115	Shielding Angle:



C Range: 0 - 360DEG  
C Interval: 30.0DEG  
Test Speed: HIGH  
Temperature:25.3DEG  
Operators:LPC  
Test Date:2021-12-22

$\gamma$  Range: 0 - 120DEG  
 $\gamma$  Interval: 1.0DEG  
Test System:EVERFINE GO-2000B\_V1 SYSTEM V2.0.362  
Humidity:65.0%  
Test Distance:9.200m [K=1.0000]  
Remarks:

## LED Avg.L Report

Test:U:24.00V I:0.2322A P:5.573W PF:1.000 Freq:50.00Hz Lamp Flux:50.1919x1 lm		
NAME: SF15-24V-3528-72-P	TYPE:硅胶	WEIGHT:
SPEC.:	DIM.: 21mm*11.5mm	SERIAL No.:2021122202
MFR.: OLYMPIA	SUR.:1*0.0115	Shielding Angle:

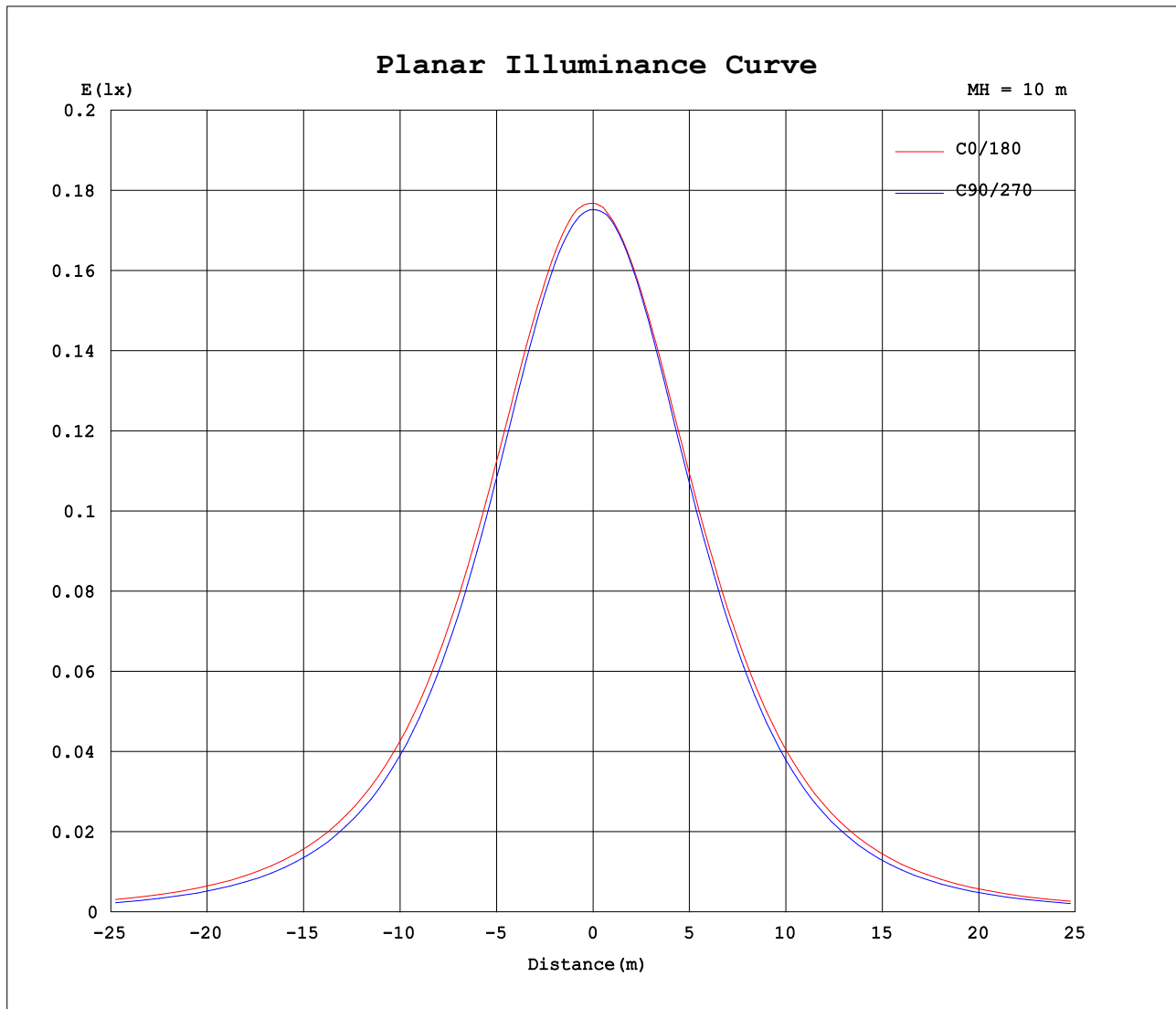
AvgL	cd/m2
L_0~180 (65) av	1325
L_0~180 (75) av	1207
L_0~180 (85) av	1196
L_90~270 (65) av	1072
L_90~270 (75) av	781
L_90~270 (85) av	173
L_45 (65) av	1309
L_45 (75) av	1189
L_45 (85) av	1115

Standard: GB/T 29293-2012

C Range: 0 - 360DEG  
C Interval: 30.0DEG  
Test Speed: HIGH  
Temperature:25.3DEG  
Operators:LPC  
Test Date:2021-12-22

γ Range: 0 - 120DEG  
γ Interval: 1.0DEG  
Test System:EVERFINE GO-2000B\_V1 SYSTEM V2.0.362  
Humidity:65.0%  
Test Distance:9.200m [K=1.0000]  
Remarks:

## Planar Illuminance Curve



C Range: 0 - 360DEG  
C Interval: 30.0DEG  
Test Speed: HIGH  
Temperature: 25.3DEG  
Operators: LPC  
Test Date: 2021-12-22

$\gamma$  Range: 0 - 120DEG  
 $\gamma$  Interval: 1.0DEG  
Test System: EVERFINE GO-2000B\_V1 SYSTEM V2.0.362  
Humidity: 65.0%  
Test Distance: 9.200m [K=1.0000]  
Remarks:

## LUMINOUS DISTRIBUTION INTENSITY DATA

Test:U:24.00V I:0.2322A P:5.573W PF:1.000 Freq:50.00Hz Lamp Flux:50.1919x1 lm		
NAME: SF15-24V-3528-72-P	TYPE: 硅胶	WEIGHT:
SPEC.:	DIM.: 21mm*11.5mm	SERIAL No.:2021122202
MFR.: OLYMPIA	SUR.:1*0.0115	Shielding Angle:

Table--1

UNIT: cd

C (DEG) γ (DEG)	0	30	60	90	120	150	180	210	240	270	300	330						
0	17.7	17.6	17.6	17.5	17.5	17.5	17.7	17.6	17.6	17.5	17.5	17.5						
5	17.7	17.6	17.6	17.5	17.4	17.3	17.6	17.5	17.5	17.5	17.5	17.5						
10	17.5	17.4	17.4	17.2	17.1	17.0	17.3	17.3	17.2	17.2	17.3	17.4						
15	17.1	17.1	17.0	16.8	16.6	16.5	16.9	16.8	16.7	16.7	16.9	17.1						
20	16.6	16.6	16.4	16.2	16.0	15.9	16.3	16.2	16.0	16.1	16.3	16.5						
25	15.9	15.9	15.7	15.4	15.2	15.1	15.5	15.4	15.3	15.2	15.5	15.9						
30	15.1	15.1	14.9	14.5	14.4	14.2	14.7	14.6	14.4	14.3	14.6	15.2						
35	14.2	14.2	13.9	13.4	13.4	13.2	13.7	13.6	13.5	13.2	13.7	14.3						
40	13.2	13.2	12.8	12.3	12.3	12.1	12.6	12.5	12.4	12.0	12.7	13.4						
45	12.1	12.1	11.7	11.1	11.1	10.9	11.5	11.4	11.2	10.7	11.6	12.3						
50	10.9	10.9	10.5	9.73	9.87	9.65	10.2	10.1	10.0	9.37	10.5	11.1						
55	9.58	9.58	9.29	8.33	8.55	8.31	8.87	8.75	8.71	7.94	9.30	9.87						
60	8.24	8.26	7.97	6.89	7.17	6.91	7.48	7.35	7.33	6.48	8.01	8.57						
65	6.84	6.87	6.61	5.43	5.75	5.48	6.04	5.90	5.91	5.00	6.67	7.22						
70	5.43	5.47	5.21	3.93	4.30	4.05	4.58	4.43	4.46	3.54	5.28	5.83						
75	4.02	4.05	3.82	2.52	2.91	2.67	3.16	3.01	3.03	2.13	3.89	4.42						
80	2.64	2.67	2.47	1.22	1.62	1.49	1.89	1.74	1.69	0.90	2.51	3.04						
85	1.47	1.45	1.27	0.24	0.68	0.67	0.92	0.82	0.65	0.11	1.27	1.75						
90	0.70	0.62	0.46	0.17	0.29	0.28	0.36	0.30	0.16	0.05	0.39	0.82						
95	0.32	0.27	0.26	0.15	0.27	0.24	0.19	0.19	0.15	0.05	0.20	0.32						
100	0.19	0.22	0.24	0.17	0.25	0.23	0.15	0.17	0.15	0.05	0.17	0.17						
105	0.20	0.17	0.22	0.18	0.23	0.23	0.12	0.13	0.14	0.07	0.15	0.13						
110	0.20	0.12	0.22	0.19	0.16	0.23	0.08	0.09	0.16	0.07	0.14	0.09						
115	0.20	0.07	0.22	0.19	0.10	0.20	0.05	0.06	0.15	0.08	0.12	0.05						
120	0.04	0.02	0.06	0.07	0.03	0.06	0.01	0.02	0.04	0.13	0.04	0.02						
125	0.00	0.00	0.00	0.00	0.00	0.00	0.00	0.00	0.00	0.00	0.00	0.00						
130	0.00	0.00	0.00	0.00	0.00	0.00	0.00	0.00	0.00	0.00	0.00	0.00						
135	0.00	0.00	0.00	0.00	0.00	0.00	0.00	0.00	0.00	0.00	0.00	0.00						
140	0.00	0.00	0.00	0.00	0.00	0.00	0.00	0.00	0.00	0.00	0.00	0.00						
145	0.00	0.00	0.00	0.00	0.00	0.00	0.00	0.00	0.00	0.00	0.00	0.00						
150	0.00	0.00	0.00	0.00	0.00	0.00	0.00	0.00	0.00	0.00	0.00	0.00						
155	0.00	0.00	0.00	0.00	0.00	0.00	0.00	0.00	0.00	0.00	0.00	0.00						
160	0.00	0.00	0.00	0.00	0.00	0.00	0.00	0.00	0.00	0.00	0.00	0.00						
165	0.00	0.00	0.00	0.00	0.00	0.00	0.00	0.00	0.00	0.00	0.00	0.00						
170	0.00	0.00	0.00	0.00	0.00	0.00	0.00	0.00	0.00	0.00	0.00	0.00						
175	0.00	0.00	0.00	0.00	0.00	0.00	0.00	0.00	0.00	0.00	0.00	0.00						
180	0.00	0.00	0.00	0.00	0.00	0.00	0.00	0.00	0.00	0.00	0.00	0.00						

C Range: 0 - 360DEG  
C Interval: 30.0DEG  
Test Speed: HIGH  
Temperature:25.3DEG  
Operators:LPC  
Test Date:2021-12-22

γ Range: 0 - 120DEG  
γ Interval: 1.0DEG  
Test System:EVERFINE GO-2000B\_V1 SYSTEM V2.0.362  
Humidity:65.0%  
Test Distance:9.200m [K=1.0000]  
Remarks:

## Photometric Data Table [cd]

G/C	0.0	30.0	60.0	90.0	120.0	150.0	180.0	210.0	240.0	270.0
0.0	17.69	17.65	17.58	17.52	17.49	17.46	17.69	17.65	17.58	17.52
3.0	17.70	17.65	17.59	17.50	17.48	17.38	17.65	17.62	17.52	17.52
6.0	17.67	17.58	17.58	17.42	17.36	17.23	17.52	17.51	17.41	17.46
9.0	17.55	17.47	17.44	17.28	17.17	17.03	17.35	17.32	17.25	17.30
12.0	17.36	17.30	17.26	17.05	16.94	16.79	17.12	17.08	17.00	17.05
15.0	17.11	17.07	17.01	16.78	16.63	16.48	16.85	16.81	16.70	16.74
18.0	16.83	16.80	16.69	16.43	16.26	16.13	16.53	16.47	16.33	16.36
21.0	16.49	16.45	16.31	16.04	15.85	15.71	16.13	16.05	15.91	15.91
24.0	16.08	16.05	15.87	15.58	15.39	15.26	15.70	15.62	15.46	15.41
27.0	15.64	15.61	15.40	15.05	14.89	14.76	15.21	15.11	14.95	14.87
30.0	15.15	15.11	14.85	14.49	14.35	14.22	14.68	14.58	14.42	14.29
33.0	14.61	14.58	14.29	13.87	13.77	13.64	14.12	14.03	13.86	13.65
36.0	14.03	14.00	13.68	13.21	13.17	12.98	13.51	13.40	13.25	12.97
39.0	13.42	13.40	13.04	12.52	12.51	12.35	12.86	12.74	12.61	12.25
42.0	12.76	12.75	12.39	11.81	11.84	11.67	12.18	12.07	11.94	11.52
45.0	12.07	12.06	11.72	11.06	11.13	10.91	11.47	11.35	11.25	10.74
48.0	11.36	11.37	11.01	10.27	10.38	10.17	10.73	10.60	10.52	9.928
51.0	10.62	10.62	10.29	9.461	9.612	9.380	9.943	9.818	9.752	9.094
54.0	9.843	9.848	9.536	8.612	8.823	8.582	9.144	9.034	8.968	8.245
57.0	9.054	9.079	8.767	7.772	7.999	7.757	8.315	8.169	8.159	7.365
60.0	8.240	8.260	7.973	6.888	7.174	6.908	7.475	7.350	7.329	6.481
63.0	7.411	7.425	7.150	6.008	6.326	6.053	6.621	6.486	6.490	5.602
66.0	6.576	6.611	6.330	5.129	5.466	5.189	5.747	5.597	5.626	4.717
69.0	5.717	5.747	5.491	4.224	4.596	4.320	4.867	4.737	4.751	3.827
72.0	4.858	4.892	4.662	3.349	3.743	3.480	4.007	3.883	3.887	2.963
75.0	4.018	4.048	3.823	2.521	2.908	2.671	3.164	3.008	3.028	2.129
78.0	3.179	3.199	2.993	1.712	2.103	1.908	2.365	2.234	2.204	1.354
81.0	2.385	2.395	2.204	0.9879	1.404	1.295	1.661	1.545	1.460	0.6903
84.0	1.666	1.656	1.490	0.3954	0.8262	0.8027	1.089	0.9769	0.8272	0.1825
87.0	1.113	1.059	0.8665	0.2091	0.4484	0.4567	0.6372	0.5691	0.3810	0.0655
90.0	0.7048	0.6223	0.4635	0.1699	0.2868	0.2761	0.3560	0.3022	0.1556	0.0452
93.0	0.4329	0.3562	0.2918	0.1452	0.2754	0.2411	0.1988	0.2012	0.1529	0.0452
96.0	0.2720	0.2560	0.2524	0.1494	0.2671	0.2336	0.1783	0.1860	0.1501	0.0452
99.0	0.2112	0.2265	0.2403	0.1609	0.2591	0.2325	0.1577	0.1810	0.1473	0.0452
102.0	0.1929	0.1970	0.2283	0.1693	0.2452	0.2314	0.1371	0.1574	0.1445	0.0502
105.0	0.1955	0.1674	0.2162	0.1793	0.2313	0.2302	0.1166	0.1338	0.1417	0.0653
108.0	0.1981	0.1379	0.2162	0.1893	0.1905	0.2291	0.0960	0.1102	0.1509	0.0653
111.0	0.2007	0.1083	0.2162	0.1934	0.1496	0.2280	0.0754	0.0866	0.1638	0.0653
114.0	0.2033	0.0788	0.2161	0.1945	0.1088	0.2269	0.0548	0.0630	0.1680	0.0653
117.0	0.1641	0.0492	0.1544	0.1627	0.0680	0.1418	0.0343	0.0394	0.1050	0.0903
120.0	0.0410	0.0197	0.0617	0.0651	0.0272	0.0567	0.0137	0.0157	0.0420	0.1257
G/C	300.0	330.0								
0.0	17.49	17.46								
3.0	17.49	17.49								
6.0	17.44	17.46								
9.0	17.33	17.43								
12.0	17.12	17.27								
15.0	16.87	17.06								
18.0	16.52	16.79								
21.0	16.13	16.41								
24.0	15.69	16.03								
27.0	15.19	15.60								
30.0	14.64	15.16								
33.0	14.07	14.68								
36.0	13.46	14.15								
39.0	12.85	13.55								
42.0	12.25	12.93								
45.0	11.64	12.28								
48.0	11.00	11.60								
51.0	10.29	10.88								
54.0	9.551	10.14								
57.0	8.797	9.365								
60.0	8.013	8.571								
63.0	7.204	7.768								
66.0	6.400	6.943								
69.0	5.561	6.104								
72.0	4.716	5.270								
75.0	3.887	4.420								
78.0	3.053	3.581								
81.0	2.244	2.766								
84.0	1.505	1.998								
87.0	0.8526	1.319								
90.0	0.3910	0.8155								

C Range: 0 - 360DEG  
 C Interval: 30.0DEG  
 Test Speed: HIGH  
 Temperature: 25.3DEG  
 Operators: LPC  
 Test Date: 2021-12-22

γ Range: 0 - 120DEG  
 γ Interval: 1.0DEG  
 Test System: EVERFINE GO-2000B\_V1 SYSTEM V2.0.362  
 Humidity: 65.0%  
 Test Distance: 9.200m [K=1.0000]  
 Remarks:

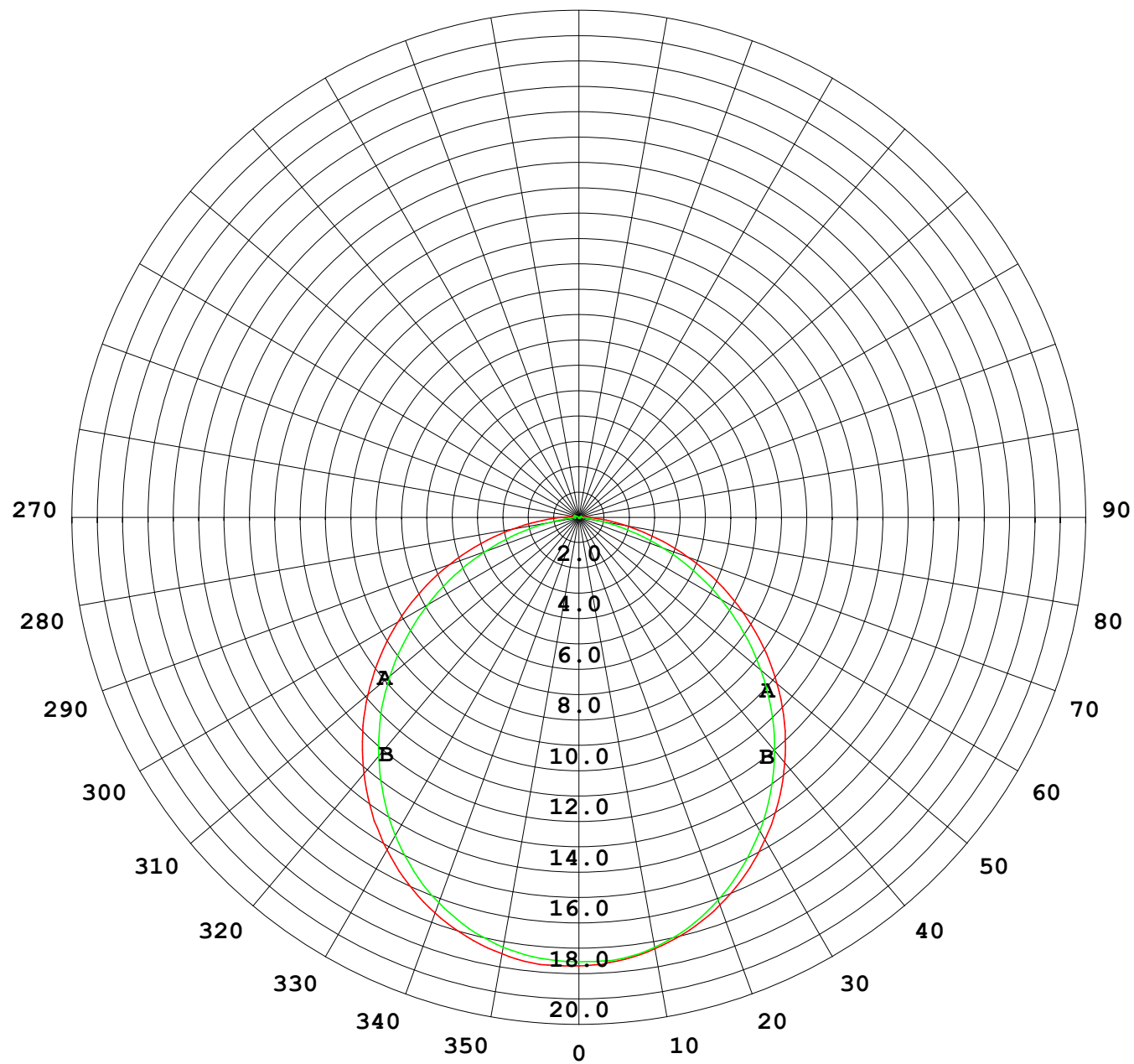
## Photometric Data Table [cd]

93.0	0.2053	0.4682
96.0	0.1904	0.2719
99.0	0.1755	0.1761
102.0	0.1606	0.1532
105.0	0.1457	0.1302
108.0	0.1444	0.1072
111.0	0.1430	0.0842
114.0	0.1416	0.0613
117.0	0.0885	0.0383
120.0	0.0354	0.0153

C Range: 0 - 360DEG  
C Interval: 30.0DEG  
Test Speed: HIGH  
Temperature: 25.3DEG  
Operators: LPC  
Test Date: 2021-12-22

γ Range: 0 - 120DEG  
γ Interval: 1.0DEG  
Test System: EVERFINE GO-2000B\_V1 SYSTEM V2.0.362  
Humidity: 65.0%  
Test Distance: 9.200m [K=1.0000]  
Remarks:

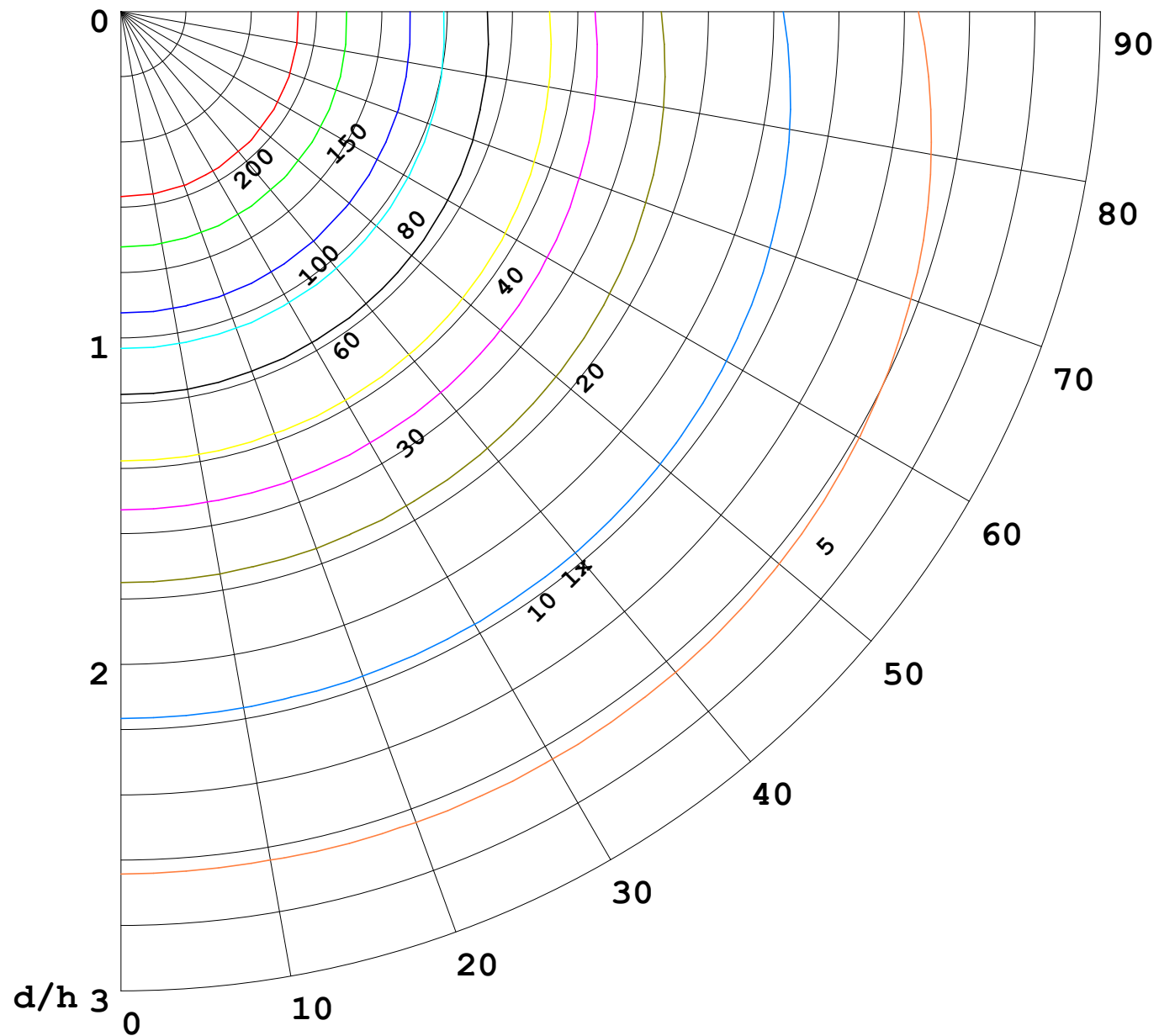
I (cd)





1000 lm

$\kappa = 1$



F = 5000 lm  
 K = 0.7  
 Hcc = 0.0 m  
 Hfc = 0.0 m  
 Eave = 100 lx

	Pcc	Pw	Pfc
—	70	50	30
—	50	30	20

