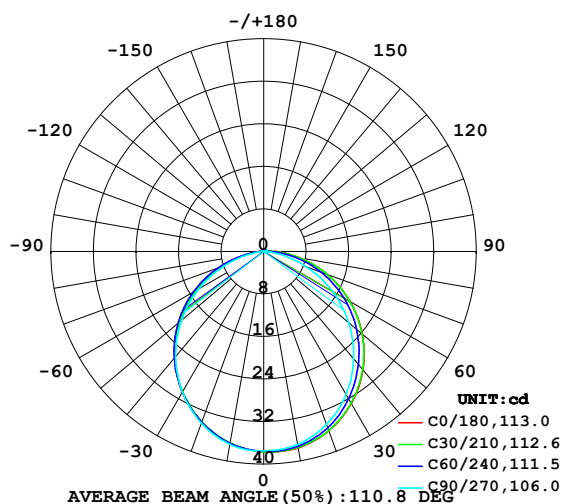


LUMINAIRE PHOTOMETRIC TEST REPORT

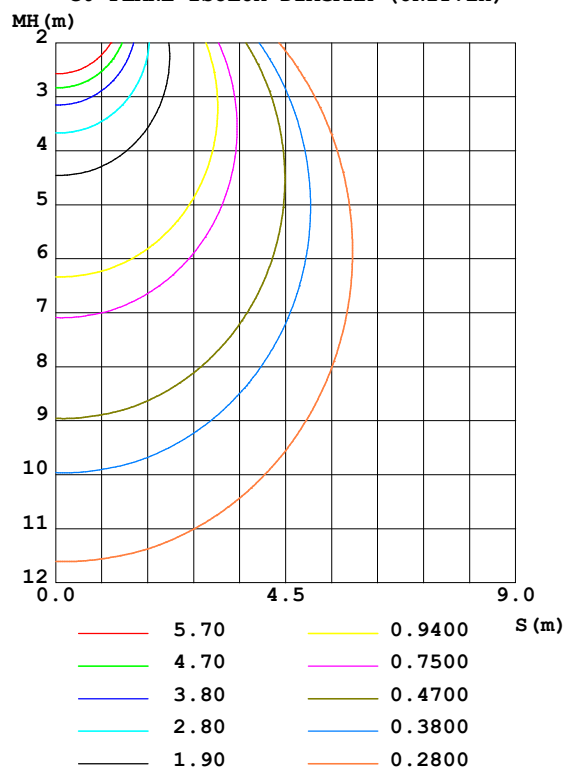
Test:U:24.00V I:0.2172A P:5.213W PF:1.000 Freq:50.00Hz Lamp Flux:107.947x1 lm		
NAME: SF15-24V-3528-72-G	TYPE: 硅胶	WEIGHT:
SPEC.:	DIM.: 21mm*11.5mm	SERIAL No.:2021122201
MFR.: OLYMPIA	SUR.:1*0.0115	Shielding Angle:

DATA OF LAMP		PHOTOMETRIC DATA Eff: 20.71 lm/W			
MODEL	3528	I _{max} (cd)	37.77	S/MH (C0/180)	1.21
NOMINAL POWER (W)	5	LOR (%)	100.0	S/MH (C90/270)	1.22
RATED VOLTAGE (V)	24	TOTAL FLUX (lm)	107.95	η UP, DN (C0-180)	0.8, 50.2
NOMINAL FLUX (lm)	107.947	CIE CLASS	DIRECT	η UP, DN (C180-360)	0.5, 48.5
LAMPS INSIDE	1	η up (%)	1.3	CIBSE SHR NOM	1.25
TEST VOLTAGE (V)	24	η down (%)	98.7	CIBSE SHR MAX	1.35

LUMINOUS INTENSITY DISTRIBUTION DIAGRAM



C0 PLANE ISOLUX DIAGRAM (UNIT:lx)



C Range: 0 - 360DEG
 C Interval: 30.0DEG
 Test Speed: HIGH
 Temperature: 25.3DEG
 Operators: LPC
 Test Date: 2021-12-22

γ Range: 0 - 120DEG
 γ Interval: 1.0DEG
 Test System: EVERFINE GO-2000B_V1 SYSTEM V2.0.362
 Humidity: 65.0%
 Test Distance: 9.200m [K=1.0000]
 Remarks:

ZONAL FLUX DIAGRAM

ZONAL FLUX DIAGRAM:

γ	C0	C45	C90	C135	C180	C225	C270	C315	γ	Φ zone	Φ total	%lum, lamp
10	37.51	37.32	36.83	36.38	36.60	36.59	36.81	37.22	0- 10	3.554	3.554	3.29,3.29
20	35.87	35.54	34.60	33.93	34.14	34.09	34.35	35.32	10- 20	10.15	13.71	12.7,12.7
30	33.01	32.45	31.04	30.35	30.58	30.53	30.58	32.14	20- 30	15.28	28.99	26.9,26.9
40	29.05	28.34	26.34	25.87	26.05	26.07	25.78	28.07	30- 40	18.31	47.30	43.8,43.8
50	24.22	23.50	20.86	20.60	20.73	20.85	20.17	23.46	40- 50	18.92	66.22	61.3,61.3
60	18.74	18.03	14.87	14.80	14.83	15.02	14.06	18.10	50- 60	17.08	83.29	77.2,77.2
70	12.80	12.16	8.628	8.687	8.683	8.850	7.750	12.26	60- 70	13.05	96.34	89.3,89.3
80	6.785	6.214	2.890	3.164	3.247	3.193	2.115	6.299	70- 80	7.592	103.9	96.3,96.3
90	2.034	1.525	0.3217	0.6459	0.5469	0.4914	0.1642	1.498	80- 90	2.561	106.5	98.7,98.7
100	0.4930	0.5228	0.3821	0.6020	0.4839	0.3993	0.1975	0.3727	90-100	0.6620	107.2	99.3,99.3
110	0.4584	0.4337	0.4527	0.5751	0.4210	0.3184	0.2671	0.3458	100-110	0.4546	107.6	99.7,99.7
120	0.0417	0.0849	0.1898	0.3811	0.0754	0.0858	0.1146	0.0805	110-120	0.3241	107.9	100,100
130	0	0	0	0	0	0	0	0	120-130	0.0101	107.9	100,100
140	0	0	0	0	0	0	0	0	130-140	0	107.9	100,100
150	0	0	0	0	0	0	0	0	140-150	0	107.9	100,100
160	0	0	0	0	0	0	0	0	150-160	0	107.9	100,100
170	0	0	0	0	0	0	0	0	160-170	0	107.9	100,100
180	0	0	0	0	0	0	0	0	170-180	0	107.9	100,100
DEG	LUMINOUS INTENSITY:cd									UNIT:lm		

Conical surface Flux(90deg): 56.84 lm

%lum = 52.7%

%lamp = 52.7%

Conical surface Flux(120deg): 83.294 lm

%lum = 77.2%

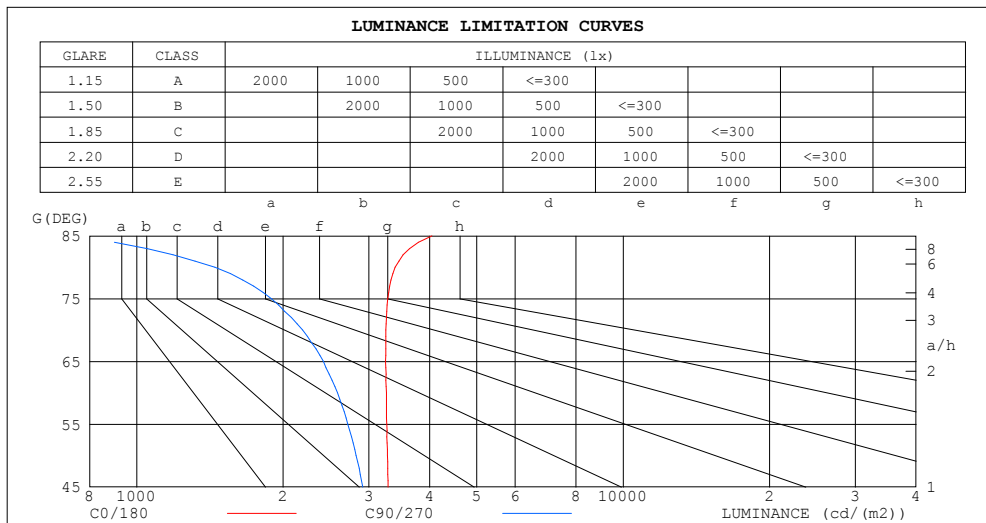
%lamp = 77.2%

C Range: 0 - 360DEG
 C Interval: 30.0DEG
 Test Speed: HIGH
 Temperature:25.3DEG
 Operators:LPC
 Test Date:2021-12-22

γ Range: 0 - 120DEG
 γ Interval: 1.0DEG
 Test System:EVERFINE GO-2000B_V1 SYSTEM V2.0.362
 Humidity:65.0%
 Test Distance:9.200m [K=1.0000]
 Remarks:

LUMINANCE LIMITATION CURVES

Test:U:24.00V I:0.2172A P:5.213W PF:1.000 Freq:50.00Hz Lamp Flux:107.947x1 lm		
NAME: SF15-24V-3528-72-G	TYPE: 硅胶	WEIGHT:
SPEC.:	DIM.: 21mm*11.5mm	SERIAL No.:2021122201
MFR.: OLYMPIA	SUR.:1*0.0115	Shielding Angle:



LUMINANCE cd/(m2)		
G (DEG)	C0/180	C90/270
85	4047	739
80	3398	1447
75	3281	1890
70	3253	2194
65	3248	2419
60	3259	2586
55	3267	2714
50	3276	2822
45	3289	2913

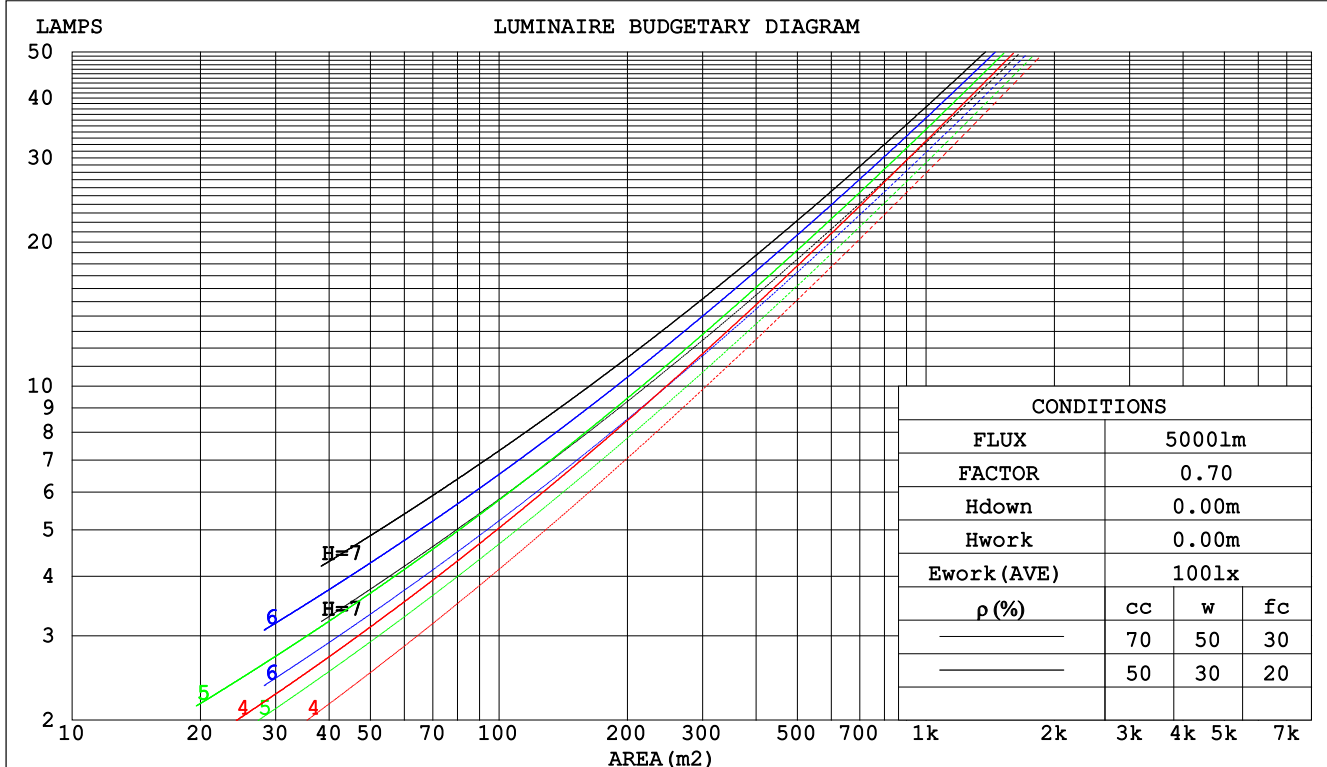
C Range: 0 - 360DEG
C Interval: 30.0DEG
Test Speed: HIGH
Temperature:25.3DEG
Operators:LPC
Test Date:2021-12-22

γ Range: 0 - 120DEG
 γ Interval: 1.0DEG
Test System:EVERFINE GO-2000B_V1 SYSTEM V2.0.362
Humidity:65.0%
Test Distance:9.200m [K=1.0000]
Remarks:

CU AND LUMINAIRE BUDGETARY ESTIMATE DIAGRAM

Test:U:24.00V I:0.2172A P:5.213W PF:1.000 Freq:50.00Hz Lamp Flux:107.947x1 lm		
NAME: SF15-24V-3528-72-G	TYPE: 硅胶	WEIGHT:
SPEC.:	DIM.: 21mm*11.5mm	SERIAL No.:2021122201
MFR.: OLYMPIA	SUR.:1*0.0115	Shielding Angle:

pcc	80%			70%			50%			30%			10%			0
pw	50%	30%	10%	50%	30%	10%	50%	30%	10%	50%	30%	10%	50%	30%	10%	0
pfc	20%			20%			20%			20%			20%			0
RCR	RCR:Room Cavity Ratio						Coefficients of Utilization(CU)									
0.0	1.19	1.19	1.19	1.16	1.16	1.16	1.10	1.10	1.10	1.05	1.05	1.05	1.01	1.01	1.01	.99
1.0	1.03	.99	.95	1.01	.97	.93	.96	.93	.90	.92	.90	.87	.88	.86	.84	.82
2.0	.90	.83	.77	.88	.82	.76	.84	.79	.74	.81	.76	.72	.77	.74	.70	.68
3.0	.79	.71	.64	.77	.70	.63	.74	.67	.62	.71	.65	.61	.68	.64	.60	.57
4.0	.70	.61	.54	.68	.60	.54	.66	.59	.53	.63	.57	.52	.61	.56	.51	.49
5.0	.62	.53	.47	.61	.53	.46	.59	.51	.46	.57	.50	.45	.55	.49	.44	.42
6.0	.56	.47	.41	.55	.47	.40	.53	.46	.40	.51	.45	.39	.50	.44	.39	.37
7.0	.51	.42	.36	.50	.42	.36	.48	.41	.35	.47	.40	.35	.45	.39	.35	.33
8.0	.46	.38	.32	.46	.38	.32	.44	.37	.32	.43	.36	.31	.42	.36	.31	.29
9.0	.43	.34	.29	.42	.34	.29	.41	.33	.28	.40	.33	.28	.38	.32	.28	.26
10.0	.39	.31	.26	.39	.31	.26	.38	.31	.26	.37	.30	.26	.36	.30	.25	.24



C Range: 0 - 360DEG
 C Interval: 30.0DEG
 Test Speed: HIGH
 Temperature:25.3DEG
 Operators:LPC
 Test Date:2021-12-22

γ Range: 0 - 120DEG
 γ Interval: 1.0DEG
 Test System:EVERFINE GO-2000B_V1 SYSTEM V2.0.362
 Humidity:65.0%
 Test Distance:9.200m [K=1.0000]
 Remarks:

WEC AND CCEC

Test:U:24.00V I:0.2172A P:5.213W PF:1.000 Freq:50.00Hz Lamp Flux:107.947x1 lm					
NAME: SF15-24V-3528-72-G			TYPE:硅胶		WEIGHT:
SPEC.:			DIM.: 21mm*11.5mm		SERIAL No.:2021122201
MFR.: OLYMPIA			SUR.:1*0.0115		Shielding Angle:

pcc	80%			70%			50%			30%			10%			0
pw	50%	30%	10%	50%	30%	10%	50%	30%	10%	50%	30%	10%	50%	30%	10%	0
pfc	20%			20%			20%			20%			20%			0
RCR	RCR:Room Cavity Ratio						Wall Exitance Coeffcients(WEC)									
0.0																
1.0	.315	.179	.057	.307	.175	.056	.293	.168	.054	.280	.162	.052	.268	.155	.050	
2.0	.294	.161	.049	.287	.158	.049	.275	.153	.047	.263	.148	.046	.253	.143	.045	
3.0	.271	.144	.043	.265	.142	.043	.254	.138	.042	.244	.134	.041	.234	.130	.040	
4.0	.250	.130	.038	.244	.128	.038	.235	.124	.037	.226	.121	.037	.217	.118	.036	
5.0	.231	.117	.034	.226	.116	.034	.217	.113	.033	.209	.110	.033	.201	.108	.032	
6.0	.214	.107	.031	.210	.106	.030	.202	.103	.030	.194	.101	.030	.188	.099	.029	
7.0	.199	.098	.028	.195	.097	.028	.188	.095	.027	.182	.093	.027	.175	.091	.027	
8.0	.186	.091	.025	.182	.090	.025	.176	.088	.025	.170	.086	.025	.165	.084	.025	
9.0	.174	.084	.023	.171	.083	.023	.165	.082	.023	.160	.080	.023	.155	.079	.023	
10.0	.163	.078	.022	.161	.078	.022	.156	.076	.021	.151	.075	.021	.146	.074	.021	

pcc	80%			70%			50%			30%			10%			0
pw	50%	30%	10%	50%	30%	10%	50%	30%	10%	50%	30%	10%	50%	30%	10%	0
pfc	20%			20%			20%			20%			20%			0
RCR	RCR:Room Cavity Ratio						Ceiling Cavity Exitance Coefficients(CCEC)									
0.0	.201	.201	.201	.172	.172	.172	.117	.117	.117	.067	.067	.067	.022	.022	.022	
1.0	.191	.166	.144	.163	.143	.124	.112	.098	.086	.064	.057	.050	.021	.018	.016	
2.0	.183	.142	.108	.157	.122	.093	.107	.085	.065	.062	.049	.038	.020	.016	.012	
3.0	.175	.125	.085	.150	.108	.073	.103	.075	.051	.060	.044	.030	.019	.014	.010	
4.0	.167	.111	.069	.144	.096	.060	.099	.067	.042	.057	.039	.025	.018	.013	.008	
5.0	.160	.101	.058	.137	.087	.050	.095	.061	.035	.055	.036	.021	.018	.012	.007	
6.0	.153	.093	.050	.131	.080	.043	.091	.056	.031	.053	.033	.018	.017	.011	.006	
7.0	.146	.086	.044	.126	.074	.038	.087	.052	.027	.050	.031	.016	.016	.010	.005	
8.0	.140	.080	.039	.120	.069	.034	.083	.049	.024	.048	.029	.014	.016	.009	.005	
9.0	.133	.075	.036	.115	.065	.031	.080	.046	.022	.046	.027	.013	.015	.009	.004	
10.0	.128	.071	.033	.110	.062	.029	.076	.043	.021	.045	.026	.012	.014	.008	.004	

C Range: 0 - 360DEG
 C Interval: 30.0DEG
 Test Speed: HIGH
 Temperature:25.3DEG
 Operators:LPC
 Test Date:2021-12-22

γ Range: 0 - 120DEG
 γ Interval: 1.0DEG
 Test System:EVERFINE GO-2000B_V1 SYSTEM V2.0.362
 Humidity:65.0%
 Test Distance:9.200m [K=1.0000]
 Remarks:

UGR(Unified Glare Rating) Table

Test:U:24.00V I:0.2172A P:5.213W PF:1.000 Freq:50.00Hz Lamp Flux:107.947x1 lm											
NAME: SF15-24V-3528-72-G						TYPE:硅胶			WEIGHT:		
SPEC.:						DIM.: 21mm*11.5mm			SERIAL No.:2021122201		
MFR.: OLYMPIA						SUR.:1*0.0115			Shielding Angle:		
ceiling/cavity	0.7	0.7	0.5	0.5	0.3	0.7	0.7	0.5	0.5	0.3	
walls	0.5	0.3	0.5	0.3	0.3	0.5	0.3	0.5	0.3	0.3	
working plane	0.2	0.2	0.2	0.2	0.2	0.2	0.2	0.2	0.2	0.2	
Room dimensions		Viewed crosswise					Viewed endwise				
x = 2H y = 2H	25.1	26.6	25.3	26.8	27.0	24.3	25.8	24.6	26.0	26.2	
	3H	26.8	28.2	27.2	28.5	28.8	25.7	27.1	26.0	27.3	27.6
	4H	27.6	29.0	28.0	29.2	29.5	26.2	27.5	26.5	27.8	28.1
	6H	28.3	29.6	28.7	29.9	30.2	26.5	27.7	26.8	28.0	28.3
	8H	28.6	29.8	29.0	30.1	30.5	26.5	27.7	26.9	28.0	28.3
	12H	28.9	30.1	29.3	30.4	30.7	26.5	27.7	26.9	28.0	28.3
4H	2H	25.7	27.0	26.0	27.3	27.6	25.1	26.4	25.4	26.7	27.0
	3H	27.7	28.8	28.1	29.2	29.5	26.7	27.9	27.1	28.2	28.6
	4H	28.6	29.7	29.0	30.0	30.4	27.4	28.5	27.8	28.8	29.2
	6H	29.5	30.4	29.9	30.8	31.2	27.9	28.8	28.3	29.2	29.6
	8H	29.9	30.7	30.3	31.1	31.5	28.0	28.8	28.4	29.2	29.6
	12H	30.2	31.0	30.7	31.4	31.9	28.0	28.8	28.4	29.2	29.6
8H	4H	28.9	29.8	29.4	30.2	30.6	27.9	28.8	28.3	29.2	29.6
	6H	30.0	30.7	30.5	31.2	31.6	28.6	29.3	29.0	29.7	30.2
	8H	30.5	31.2	31.0	31.6	32.1	28.8	29.5	29.3	29.9	30.4
	12H	31.0	31.6	31.5	32.0	32.5	28.9	29.5	29.4	30.0	30.5
12H	4H	29.0	29.8	29.4	30.2	30.6	28.0	28.8	28.4	29.2	29.6
	6H	30.1	30.7	30.6	31.2	31.7	28.7	29.4	29.2	29.8	30.3
	8H	30.7	31.2	31.2	31.7	32.2	29.1	29.6	29.6	30.1	30.6
Variations with the observer position at spacings:											
S = 1.0H	+ 0.1 / - 0.2					+ 0.2 / - 0.2					
1.5H	+ 0.2 / - 0.3					+ 0.2 / - 0.4					
2.0H	+ 0.1 / - 0.3					+ 0.2 / - 0.5					

CIE Pub.117, 107.9 lm Total Lamp Luminous Flux Correct (8log(F/F0) = -7.7)

C Range: 0 - 360DEG
C Interval: 30.0DEG
Test Speed: HIGH
Temperature:25.3DEG
Operators:LPC
Test Date:2021-12-22

γ Range: 0 - 120DEG
γ Interval: 1.0DEG
Test System:EVERFINE GO-2000B_V1 SYSTEM V2.0.362
Humidity:65.0%
Test Distance:9.200m [K=1.0000]
Remarks:

UTILIZATION FACTORS TABLE

Test:U:24.00V I:0.2172A P:5.213W PF:1.000 Freq:50.00Hz Lamp Flux:107.947x1 lm		
NAME: SF15-24V-3528-72-G	TYPE: 硅胶	WEIGHT:
SPEC.:	DIM.: 21mm*11.5mm	SERIAL No.:2021122201
MFR.: OLYMPIA	SUR.:1*0.0115	Shielding Angle:

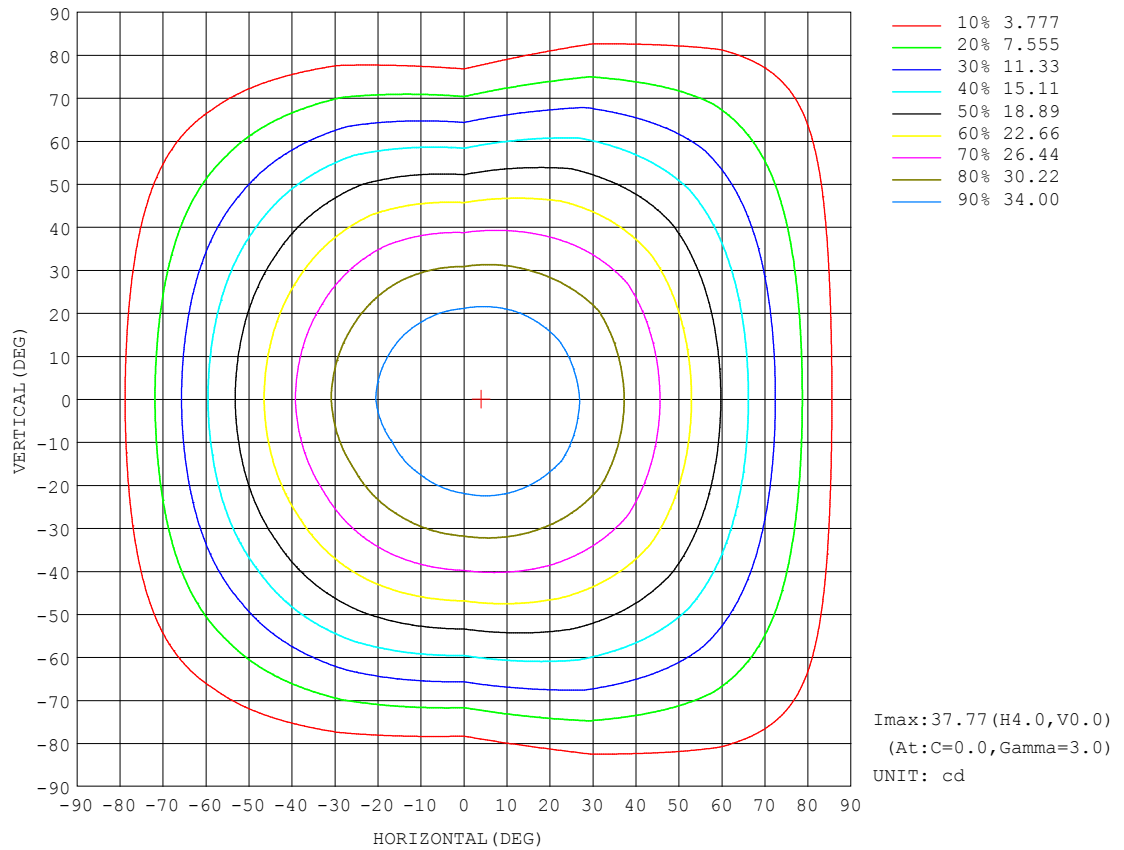
REFLECTANCE										
Ceiling	0.8	0.8	0.8	0.7	0.7	0.7	0.5	0.5	0.5	0
Walls	0.7	0.5	0.3	0.7	0.5	0.3	0.7	0.5	0.3	0
Working plane	0.2	0.2	0.2	0.2	0.2	0.2	0.2	0.2	0.2	0
ROOM INDEX	UTILIZATION FACTORS (PERCENT) $k(RI) \times RCR = 5$									
$k = 0.60$	57	45	38	56	45	38	55	45	38	32
0.80	67	55	48	66	55	48	64	54	47	40
1.00	75	64	57	74	63	56	72	65	56	49
1.25	82	72	64	81	71	64	78	69	63	56
1.50	87	77	70	86	76	70	82	75	69	61
2.00	94	85	79	92	84	78	89	82	77	68
2.50	98	90	84	96	89	83	92	86	81	73
3.00	102	94	89	99	93	88	95	90	85	77
4.00	106	100	95	103	98	93	99	94	91	81
5.00	108	103	99	105	101	97	101	97	94	84
ROOM INDEX	UF (total)									Direct
According to DIN EN 13032-2 2004			Suspended					SHRNOM = 1.25		

C Range: 0 - 360DEG
C Interval: 30.0DEG
Test Speed: HIGH
Temperature:25.3DEG
Operators:LPC
Test Date:2021-12-22

γ Range: 0 - 120DEG
 γ Interval: 1.0DEG
Test System:EVERFINE GO-2000B_V1 SYSTEM V2.0.362
Humidity:65.0%
Test Distance:9.200m [K=1.0000]
Remarks:

ISOCANDELA DIAGRAM

Test:U:24.00V I:0.2172A P:5.213W PF:1.000 Freq:50.00Hz Lamp Flux:107.947x1 lm		
NAME: SF15-24V-3528-72-G	TYPE: 硅胶	WEIGHT:
SPEC.:	DIM.: 21mm*11.5mm	SERIAL No.:2021122201
MFR.: OLYMPIA	SUR.:1*0.0115	Shielding Angle:

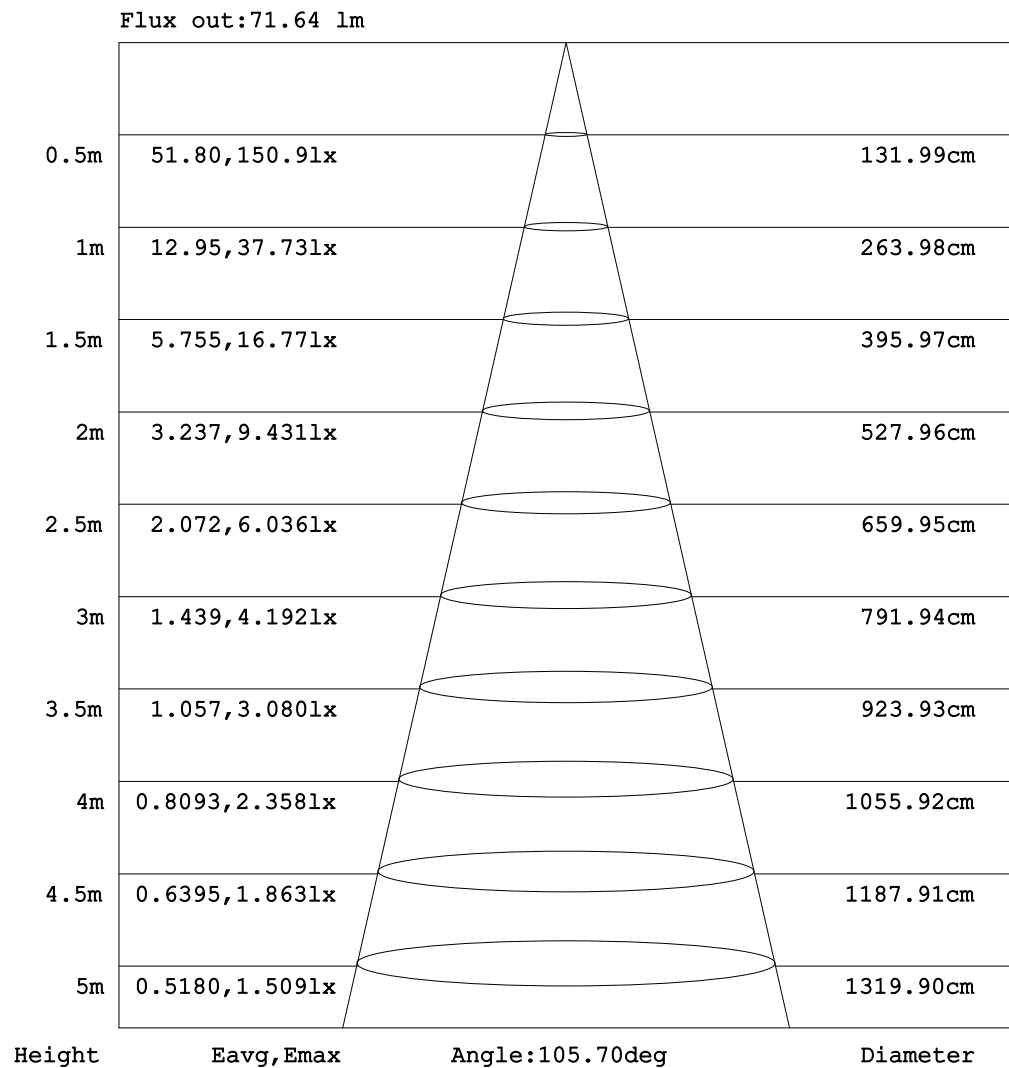


C Range: 0 - 360DEG
C Interval: 30.0DEG
Test Speed: HIGH
Temperature: 25.3DEG
Operators: LPC
Test Date: 2021-12-22

γ Range: 0 - 120DEG
 γ Interval: 1.0DEG
Test System: EVERFINE GO-2000B_V1 SYSTEM V2.0.362
Humidity: 65.0%
Test Distance: 9.200m [K=1.0000]
Remarks:

AAI Figure

Test:U:24.00V I:0.2172A P:5.213W PF:1.000 Freq:50.00Hz Lamp Flux:107.947x1 lm		
NAME: SF15-24V-3528-72-G	TYPE: 硅胶	WEIGHT:
SPEC.:	DIM.: 21mm*11.5mm	SERIAL No.:2021122201
MFR.: OLYMPIA	SUR.:1*0.0115	Shielding Angle:



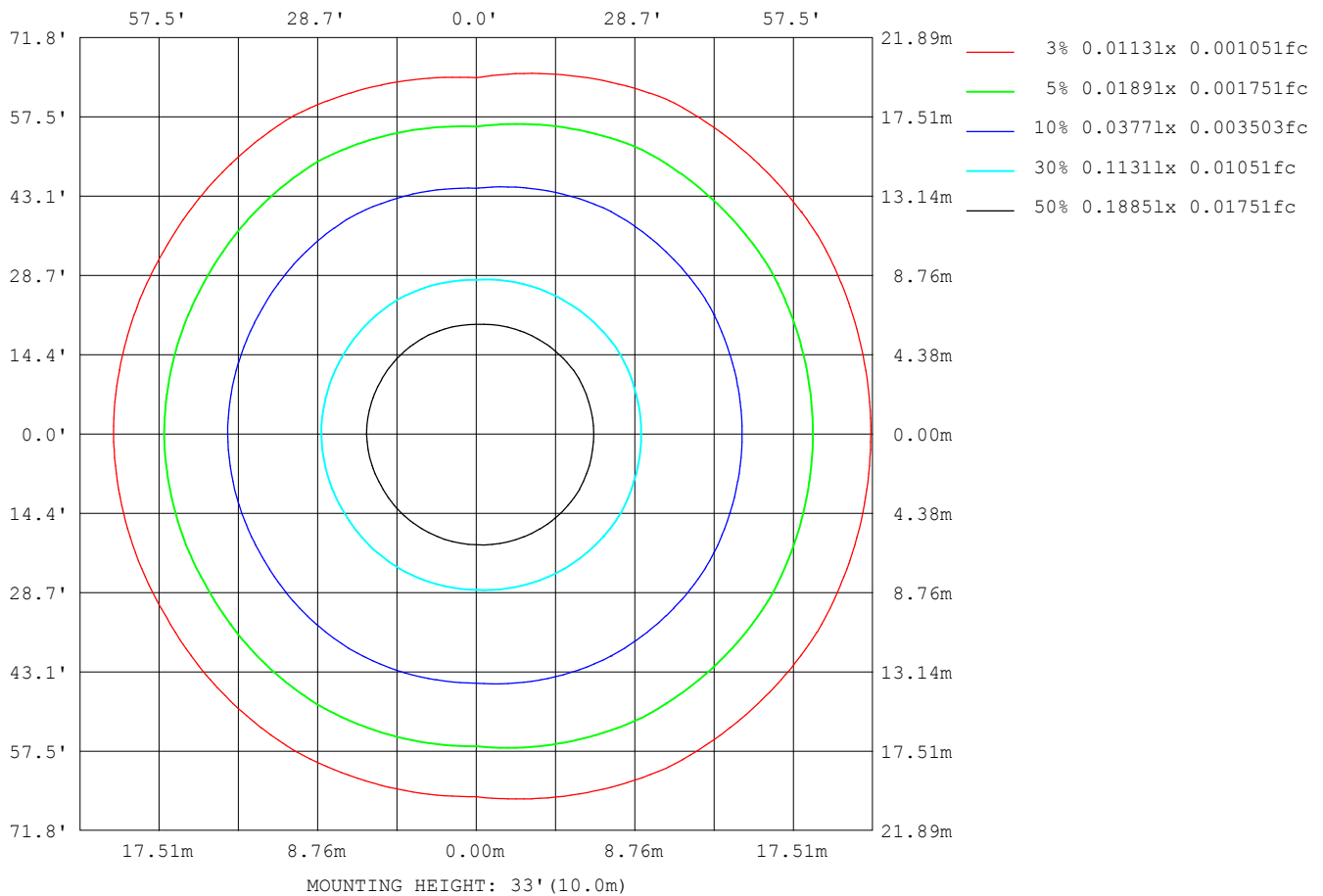
Note: The Curves indicate the illuminated area and the average illumination when the luminaire is at different distance.

C Range: 0 - 360DEG
 C Interval: 30.0DEG
 Test Speed: HIGH
 Temperature: 25.3DEG
 Operators: LPC
 Test Date: 2021-12-22

γ Range: 0 - 120DEG
 γ Interval: 1.0DEG
 Test System: EVERFINE GO-2000B_V1 SYSTEM V2.0.362
 Humidity: 65.0%
 Test Distance: 9.200m [K=1.0000]
 Remarks:

ISOLUX DIAGRAM

Test:U:24.00V I:0.2172A P:5.213W PF:1.000 Freq:50.00Hz Lamp Flux:107.947x1 lm		
NAME: SF15-24V-3528-72-G	TYPE: 硅胶	WEIGHT:
SPEC.:	DIM.: 21mm*11.5mm	SERIAL No.:2021122201
MFR.: OLYMPIA	SUR.:1*0.0115	Shielding Angle:



C Range: 0 - 360DEG
C Interval: 30.0DEG
Test Speed: HIGH
Temperature:25.3DEG
Operators:LPC
Test Date:2021-12-22

γ Range: 0 - 120DEG
 γ Interval: 1.0DEG
Test System:EVERFINE GO-2000B_V1 SYSTEM V2.0.362
Humidity:65.0%
Test Distance:9.200m [K=1.0000]
Remarks:

LED Avg.L Report

Test:U:24.00V I:0.2172A P:5.213W PF:1.000 Freq:50.00Hz Lamp Flux:107.947x1 lm		
NAME: SF15-24V-3528-72-G	TYPE:硅胶	WEIGHT:
SPEC.:	DIM.: 21mm*11.5mm	SERIAL No.:2021122201
MFR.: OLYMPIA	SUR.:1*0.0115	Shielding Angle:

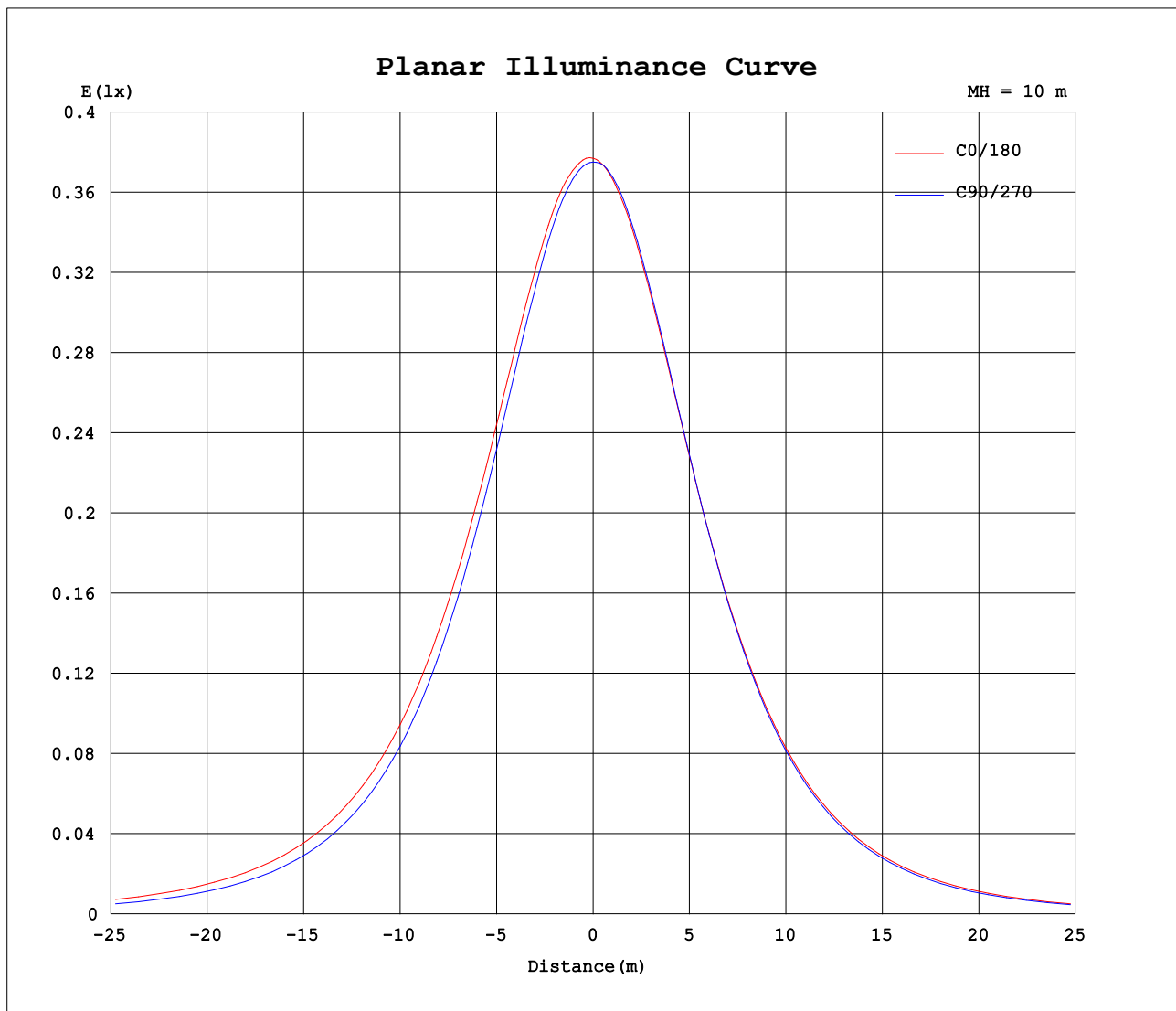
AvgL	cd/m2
L_0~180 (65) av	2834
L_0~180 (75) av	2606
L_0~180 (85) av	2759
L_90~270 (65) av	2330
L_90~270 (75) av	1744
L_90~270 (85) av	529
L_45 (65) av	2806
L_45 (75) av	2564
L_45 (85) av	2532

Standard: GB/T 29293-2012

C Range: 0 - 360DEG
C Interval: 30.0DEG
Test Speed: HIGH
Temperature:25.3DEG
Operators:LPC
Test Date:2021-12-22

γ Range: 0 - 120DEG
γ Interval: 1.0DEG
Test System:EVERFINE GO-2000B_V1 SYSTEM V2.0.362
Humidity:65.0%
Test Distance:9.200m [K=1.0000]
Remarks:

Planar Illuminance Curve



C Range: 0 - 360DEG
C Interval: 30.0DEG
Test Speed: HIGH
Temperature: 25.3DEG
Operators: LPC
Test Date: 2021-12-22

γ Range: 0 - 120DEG
 γ Interval: 1.0DEG
Test System: EVERFINE GO-2000B_V1 SYSTEM V2.0.362
Humidity: 65.0%
Test Distance: 9.200m [K=1.0000]
Remarks:

LUMINOUS DISTRIBUTION INTENSITY DATA

Test:U:24.00V I:0.2172A P:5.213W PF:1.000 Freq:50.00Hz Lamp Flux:107.947x1 lm		
NAME: SF15-24V-3528-72-G	TYPE: 硅胶	WEIGHT:
SPEC.:	DIM.: 21mm*11.5mm	SERIAL No.:2021122201
MFR.: OLYMPIA	SUR.:1*0.0115	Shielding Angle:

Table--1

UNIT: cd

C (DEG) γ (DEG)	0	30	60	90	120	150	180	210	240	270	300	330						
0	37.7	37.7	37.6	37.5	37.5	37.4	37.7	37.7	37.6	37.5	37.5	37.4						
5	37.7	37.7	37.6	37.3	37.2	37.0	37.3	37.3	37.3	37.4	37.5	37.5						
10	37.5	37.4	37.2	36.8	36.5	36.3	36.6	36.6	36.6	36.8	37.1	37.3						
15	36.8	36.8	36.4	35.9	35.4	35.2	35.5	35.5	35.5	35.8	36.2	36.7						
20	35.9	35.8	35.3	34.6	34.1	33.8	34.1	34.1	34.1	34.3	35.0	35.6						
25	34.6	34.5	33.8	33.0	32.4	32.1	32.5	32.4	32.5	32.6	33.5	34.2						
30	33.0	32.9	32.0	31.0	30.5	30.2	30.6	30.5	30.6	30.6	31.6	32.6						
35	31.2	31.0	29.9	28.8	28.4	28.0	28.4	28.3	28.5	28.3	29.5	30.9						
40	29.1	29.0	27.7	26.3	26.1	25.7	26.1	25.9	26.2	25.8	27.3	28.9						
45	26.7	26.7	25.3	23.7	23.5	23.1	23.5	23.4	23.7	23.1	25.0	26.6						
50	24.2	24.2	22.8	20.9	20.8	20.4	20.7	20.7	21.0	20.2	22.7	24.2						
55	21.6	21.5	20.2	17.9	18.0	17.5	17.8	17.8	18.2	17.1	20.2	21.6						
60	18.7	18.7	17.4	14.9	15.1	14.5	14.8	14.8	15.3	14.1	17.4	18.8						
65	15.8	15.8	14.5	11.8	12.0	11.5	11.8	11.6	12.2	10.9	14.6	15.9						
70	12.8	12.8	11.5	8.63	8.99	8.39	8.68	8.52	9.18	7.75	11.7	12.9						
75	9.77	9.75	8.59	5.62	6.02	5.47	5.75	5.56	6.13	4.76	8.67	9.84						
80	6.79	6.74	5.69	2.89	3.32	3.01	3.25	3.04	3.35	2.11	5.74	6.86						
85	4.06	3.98	3.05	0.74	1.38	1.37	1.47	1.33	1.26	0.32	3.05	4.08						
90	2.03	1.88	1.17	0.32	0.64	0.65	0.55	0.53	0.45	0.16	1.06	1.94						
95	0.94	0.82	0.59	0.36	0.61	0.61	0.52	0.43	0.42	0.18	0.47	0.81						
100	0.49	0.51	0.54	0.38	0.60	0.60	0.48	0.42	0.38	0.20	0.38	0.37						
105	0.46	0.50	0.50	0.44	0.54	0.62	0.45	0.33	0.34	0.26	0.34	0.36						
110	0.46	0.35	0.52	0.45	0.53	0.62	0.42	0.23	0.41	0.27	0.32	0.37						
115	0.25	0.20	0.55	0.47	0.60	0.49	0.26	0.13	0.45	0.28	0.19	0.37						
120	0.04	0.06	0.11	0.19	0.62	0.14	0.08	0.02	0.15	0.11	0.05	0.11						
125	0.00	0.00	0.00	0.00	0.00	0.00	0.00	0.00	0.00	0.00	0.00	0.00						
130	0.00	0.00	0.00	0.00	0.00	0.00	0.00	0.00	0.00	0.00	0.00	0.00						
135	0.00	0.00	0.00	0.00	0.00	0.00	0.00	0.00	0.00	0.00	0.00	0.00						
140	0.00	0.00	0.00	0.00	0.00	0.00	0.00	0.00	0.00	0.00	0.00	0.00						
145	0.00	0.00	0.00	0.00	0.00	0.00	0.00	0.00	0.00	0.00	0.00	0.00						
150	0.00	0.00	0.00	0.00	0.00	0.00	0.00	0.00	0.00	0.00	0.00	0.00						
155	0.00	0.00	0.00	0.00	0.00	0.00	0.00	0.00	0.00	0.00	0.00	0.00						
160	0.00	0.00	0.00	0.00	0.00	0.00	0.00	0.00	0.00	0.00	0.00	0.00						
165	0.00	0.00	0.00	0.00	0.00	0.00	0.00	0.00	0.00	0.00	0.00	0.00						
170	0.00	0.00	0.00	0.00	0.00	0.00	0.00	0.00	0.00	0.00	0.00	0.00						
175	0.00	0.00	0.00	0.00	0.00	0.00	0.00	0.00	0.00	0.00	0.00	0.00						
180	0.00	0.00	0.00	0.00	0.00	0.00	0.00	0.00	0.00	0.00	0.00	0.00						

C Range: 0 - 360DEG
C Interval: 30.0DEG
Test Speed: HIGH
Temperature:25.3DEG
Operators:LPC
Test Date:2021-12-22

γ Range: 0 - 120DEG
γ Interval: 1.0DEG
Test System:EVERFINE GO-2000B_V1 SYSTEM V2.0.362
Humidity:65.0%
Test Distance:9.200m [K=1.0000]
Remarks:

Photometric Data Table [cd]

G/C	0.0	30.0	60.0	90.0	120.0	150.0	180.0	210.0	240.0	270.0
0.0	37.70	37.69	37.57	37.51	37.52	37.44	37.70	37.69	37.57	37.51
3.0	37.77	37.72	37.59	37.45	37.37	37.23	37.52	37.50	37.45	37.52
6.0	37.70	37.66	37.55	37.26	37.08	36.88	37.19	37.18	37.18	37.32
9.0	37.59	37.50	37.32	36.96	36.66	36.45	36.77	36.73	36.79	36.98
12.0	37.28	37.19	36.95	36.49	36.13	35.85	36.20	36.16	36.23	36.44
15.0	36.85	36.78	36.43	35.91	35.45	35.18	35.53	35.47	35.52	35.76
18.0	36.29	36.25	35.78	35.16	34.65	34.38	34.75	34.71	34.73	34.97
21.0	35.62	35.59	35.01	34.29	33.75	33.47	33.85	33.74	33.80	34.02
24.0	34.86	34.81	34.11	33.34	32.75	32.49	32.87	32.78	32.81	32.96
27.0	33.97	33.90	33.11	32.20	31.68	31.38	31.77	31.64	31.73	31.83
30.0	33.01	32.91	32.00	31.04	30.50	30.21	30.58	30.48	30.58	30.58
33.0	31.93	31.84	30.79	29.72	29.24	28.94	29.32	29.24	29.36	29.23
36.0	30.75	30.66	29.51	28.32	27.92	27.57	27.96	27.86	28.04	27.80
39.0	29.49	29.38	28.17	26.86	26.53	26.15	26.54	26.43	26.67	26.29
42.0	28.15	28.07	26.78	25.30	25.05	24.68	25.04	24.93	25.22	24.71
45.0	26.74	26.68	25.35	23.69	23.53	23.12	23.47	23.39	23.71	23.06
48.0	25.25	25.16	23.85	22.05	21.94	21.50	21.85	21.71	22.12	21.34
51.0	23.70	23.67	22.30	20.30	20.30	19.80	20.16	20.05	20.49	19.58
54.0	22.11	22.01	20.72	18.52	18.61	18.04	18.42	18.30	18.81	17.79
57.0	20.44	20.42	19.07	16.73	16.86	16.31	16.65	16.52	17.07	15.94
60.0	18.74	18.68	17.39	14.87	15.08	14.51	14.83	14.75	15.30	14.06
63.0	17.00	16.93	15.70	12.98	13.27	12.63	12.98	12.88	13.47	12.16
66.0	15.20	15.19	13.94	11.14	11.45	10.83	11.15	11.00	11.64	10.27
69.0	13.40	13.37	12.13	9.246	9.590	8.975	9.281	9.158	9.774	8.373
72.0	11.60	11.55	10.35	7.387	7.777	7.166	7.472	7.384	7.929	6.545
75.0	9.767	9.750	8.585	5.624	6.017	5.473	5.749	5.559	6.131	4.760
78.0	7.962	7.920	6.816	3.951	4.328	3.901	4.162	3.975	4.412	3.086
81.0	6.222	6.166	5.122	2.373	2.844	2.610	2.830	2.657	2.855	1.652
84.0	4.560	4.503	3.534	1.082	1.658	1.621	1.756	1.591	1.575	0.5611
87.0	3.126	3.012	2.141	0.3715	0.9319	0.9788	1.003	0.9017	0.7573	0.2015
90.0	2.034	1.877	1.174	0.3217	0.6438	0.6480	0.5469	0.5285	0.4543	0.1642
93.0	1.284	1.149	0.7046	0.3368	0.6168	0.6117	0.5280	0.4423	0.4324	0.1742
96.0	0.8106	0.7076	0.5681	0.3569	0.6125	0.6074	0.5091	0.4306	0.4106	0.1842
99.0	0.5385	0.5076	0.5462	0.3770	0.6053	0.6031	0.4902	0.4205	0.3887	0.1941
102.0	0.4666	0.5166	0.5212	0.4123	0.5921	0.6132	0.4713	0.3963	0.3668	0.2110
105.0	0.4635	0.4955	0.4961	0.4434	0.5431	0.6167	0.4524	0.3337	0.3418	0.2612
108.0	0.4605	0.4081	0.5090	0.4495	0.5339	0.6201	0.4335	0.2711	0.3721	0.2642
111.0	0.4167	0.3206	0.5276	0.4542	0.5476	0.6236	0.4147	0.2086	0.4272	0.2685
114.0	0.2917	0.2332	0.5458	0.4625	0.5930	0.5564	0.3016	0.1460	0.4373	0.2814
117.0	0.1667	0.1457	0.4463	0.4745	0.6080	0.3477	0.1885	0.0834	0.3770	0.2865
120.0	0.0417	0.0583	0.1116	0.1898	0.6232	0.1391	0.0754	0.0209	0.1508	0.1146
G/C	300.0	330.0								
0.0	37.52	37.44								
3.0	37.52	37.54								
6.0	37.44	37.48								
9.0	37.21	37.42								
12.0	36.80	37.13								
15.0	36.23	36.69								
18.0	35.53	36.12								
21.0	34.73	35.39								
24.0	33.80	34.53								
27.0	32.76	33.63								
30.0	31.63	32.64								
33.0	30.39	31.62								
36.0	29.10	30.55								
39.0	27.74	29.30								
42.0	26.38	28.03								
45.0	25.02	26.61								
48.0	23.66	25.16								
51.0	22.25	23.67								
54.0	20.72	22.09								
57.0	19.11	20.42								
60.0	17.44	18.76								
63.0	15.73	17.07								
66.0	14.01	15.26								
69.0	12.23	13.49								
72.0	10.45	11.73								
75.0	8.669	9.842								
78.0	6.890	8.097								
81.0	5.181	6.297								
84.0	3.557	4.620								
87.0	2.117	3.135								
90.0	1.058	1.938								

C Range: 0 - 360DEG
 C Interval: 30.0DEG
 Test Speed: HIGH
 Temperature: 25.3DEG
 Operators: LPC
 Test Date: 2021-12-22

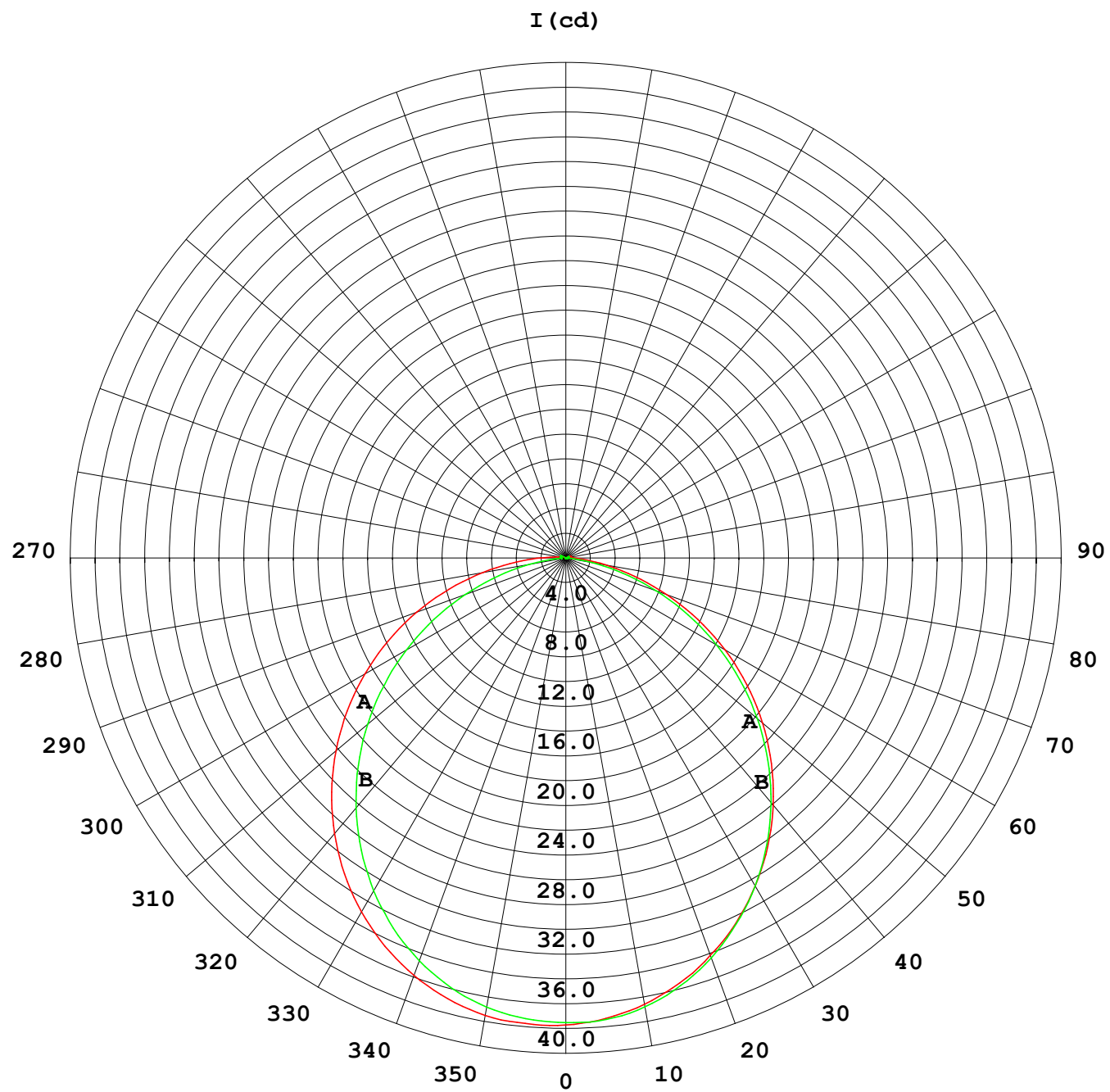
γ Range: 0 - 120DEG
 γ Interval: 1.0DEG
 Test System: EVERFINE GO-2000B_V1 SYSTEM V2.0.362
 Humidity: 65.0%
 Test Distance: 9.200m [K=1.0000]
 Remarks:

Photometric Data Table [cd]

93.0	0.5168	1.158
96.0	0.4504	0.6898
99.0	0.3920	0.4278
102.0	0.3498	0.3651
105.0	0.3360	0.3615
108.0	0.3419	0.3580
111.0	0.2978	0.3682
114.0	0.2166	0.3726
117.0	0.1354	0.2672
120.0	0.0542	0.1069

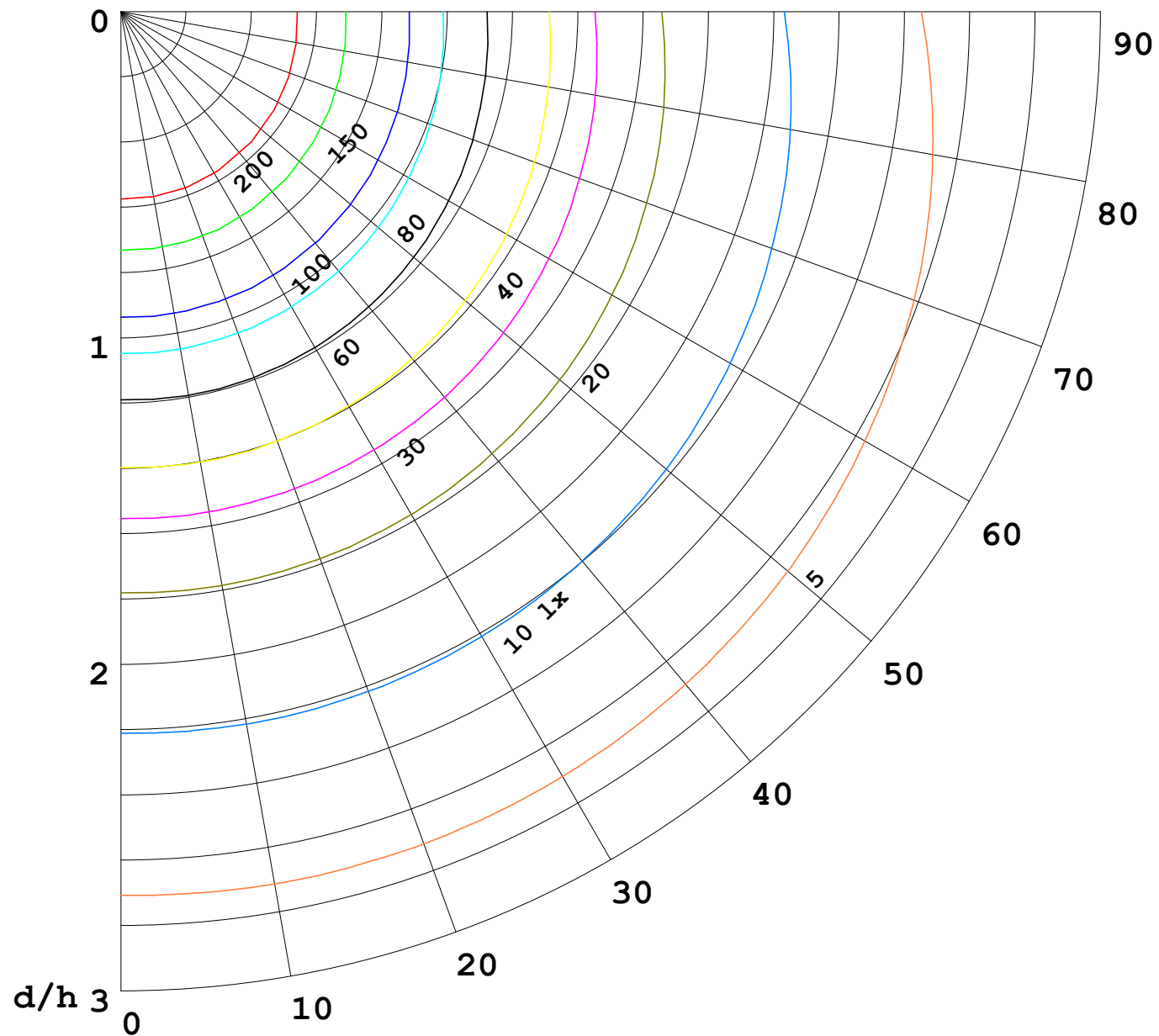
C Range: 0 - 360DEG
C Interval: 30.0DEG
Test Speed: HIGH
Temperature: 25.3DEG
Operators: LPC
Test Date: 2021-12-22

γ Range: 0 - 120DEG
γ Interval: 1.0DEG
Test System: EVERFINE GO-2000B_V1 SYSTEM V2.0.362
Humidity: 65.0%
Test Distance: 9.200m [K=1.0000]
Remarks:



1000 lm

$\kappa = 1$



F = 5000 lm
 K = 0.7
 Hcc = 0.0 m
 Hfc = 0.0 m
 Eave = 100 lx

	Pcc	Pw	Pfc
—	70	50	30
—	50	30	20

