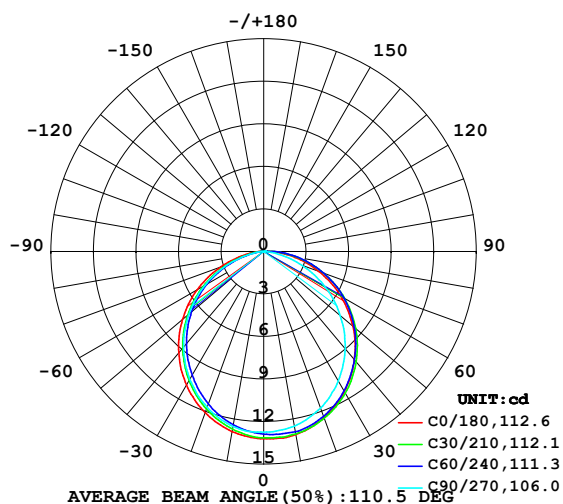


## LUMINAIRE PHOTOMETRIC TEST REPORT

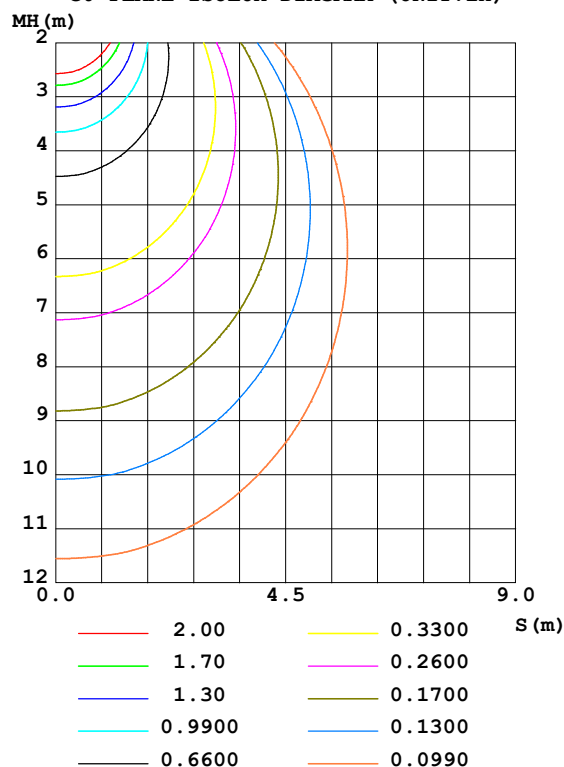
Test:U:24.00V I:0.2345A P:5.628W PF:1.000 Freq:50.00Hz Lamp Flux:36.9729x1 lm		
NAME: SF15-24V-3528-72-A	TYPE: 硅胶	WEIGHT:
SPEC.:	DIM.: 21mm*11.5mm	SERIAL No.:2021122110
MFR.: OLYMPIA	SUR.:1*0.0115	Shielding Angle:

DATA OF LAMP		PHOTOMETRIC DATA				Eff: 6.57 lm/W
MODEL	3528	I <sub>max</sub> (cd)	13.23	S/MH (C0/180)	1.23	
NOMINAL POWER (W)	5	LOR (%)	100.0	S/MH (C90/270)	1.22	
RATED VOLTAGE (V)	24	TOTAL FLUX (lm)	36.973	η UP, DN (C0-180)	0.6, 48.6	
NOMINAL FLUX (lm)	36.9729	CIE CLASS	DIRECT	η UP, DN (C180-360)	0.5, 50.3	
LAMPS INSIDE	1	η up (%)	1.2	CIBSE SHR NOM	1.25	
TEST VOLTAGE (V)	24	η down (%)	98.8	CIBSE SHR MAX	1.35	

LUMINOUS INTENSITY DISTRIBUTION DIAGRAM



C0 PLANE ISOLUX DIAGRAM (UNIT:lx)



C Range: 0 - 360DEG  
C Interval: 30.0DEG  
Test Speed: HIGH  
Temperature: 25.3DEG  
Operators: LPC  
Test Date: 2021-12-21

γ Range: 0 - 120DEG  
γ Interval: 1.0DEG  
Test System: EVERFINE GO-2000B\_V1 SYSTEM V2.0.362  
Humidity: 65.0%  
Test Distance: 9.200m [K=1.0000]  
Remarks:

## ZONAL FLUX DIAGRAM

## ZONAL FLUX DIAGRAM:

$\gamma$	C0	C45	C90	C135	C180	C225	C270	C315	$\gamma$	$\Phi$ zone	$\Phi$ total	%lum, lamp
10	13.11	12.98	12.51	12.09	12.90	12.56	12.53	12.79	0- 10	1.220	1.220	3.3,3.3
20	12.46	12.44	11.74	11.06	12.08	11.64	11.69	12.38	10- 20	3.484	4.703	12.7,12.7
30	11.40	11.44	10.54	9.655	10.88	10.31	10.42	11.52	20- 30	5.245	9.948	26.9,26.9
40	9.958	10.06	8.949	7.968	9.326	8.694	8.802	10.32	30- 40	6.282	16.23	43.9,43.9
50	8.219	8.421	7.064	6.061	7.481	6.827	6.877	8.858	40- 50	6.484	22.71	61.4,61.4
60	6.269	6.551	5.019	3.988	5.425	4.764	4.781	7.101	50- 60	5.838	28.55	77.2,77.2
70	4.163	4.503	2.868	1.928	3.254	2.631	2.630	5.156	60- 70	4.443	33.00	89.2,89.2
80	2.067	2.415	0.8879	0.4401	1.270	0.7764	0.6951	3.098	70- 80	2.591	35.59	96.2,96.2
90	0.5588	0.6486	0.0754	0.1617	0.1804	0.1107	0.0151	1.153	80- 90	0.9569	36.54	98.8,98.8
100	0.1357	0.1432	0.0955	0.1544	0.0905	0.0935	0.0151	0.1738	90-100	0.2430	36.79	99.5,99.5
110	0.1291	0.1022	0.1114	0.1287	0.0905	0.0665	0.0352	0.0729	100-110	0.1109	36.90	99.8,99.8
120	0.0372	0.0120	0.0253	0.0843	0.0905	0.0111	0.0603	0.0729	110-120	0.0730	36.97	100,100
130	0	0	0	0	0	0	0	0	120-130	0.0027	36.97	100,100
140	0	0	0	0	0	0	0	0	130-140	0	36.97	100,100
150	0	0	0	0	0	0	0	0	140-150	0	36.97	100,100
160	0	0	0	0	0	0	0	0	150-160	0	36.97	100,100
170	0	0	0	0	0	0	0	0	160-170	0	36.97	100,100
180	0	0	0	0	0	0	0	0	170-180	0	36.97	100,100
DEG	LUMINOUS INTENSITY:cd									UNIT:lm		

Conical surface Flux(90deg): 19.501 lm

%lum = 52.7%

%lamp = 52.7%

Conical surface Flux(120deg): 28.553 lm

%lum = 77.2%

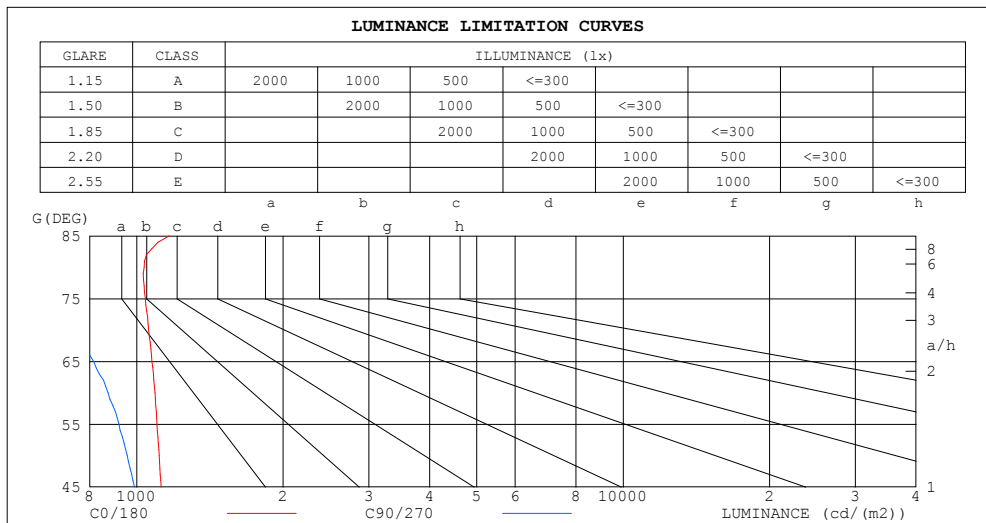
%lamp = 77.2%

C Range: 0 - 360DEG  
 C Interval: 30.0DEG  
 Test Speed: HIGH  
 Temperature:25.3DEG  
 Operators:LPC  
 Test Date:2021-12-21

$\gamma$  Range: 0 - 120DEG  
 $\gamma$  Interval: 1.0DEG  
 Test System:EVERFINE GO-2000B\_V1 SYSTEM V2.0.362  
 Humidity:65.0%  
 Test Distance:9.200m [K=1.0000]  
 Remarks:

## LUMINANCE LIMITATION CURVES

Test:U:24.00V I:0.2345A P:5.628W PF:1.000 Freq:50.00Hz Lamp Flux:36.9729x1 lm		
NAME: SF15-24V-3528-72-A	TYPE:硅胶	WEIGHT:
SPEC.:	DIM.: 21mm*11.5mm	SERIAL No.:2021122110
MFR.: OLYMPIA	SUR.:1*0.0115	Shielding Angle:



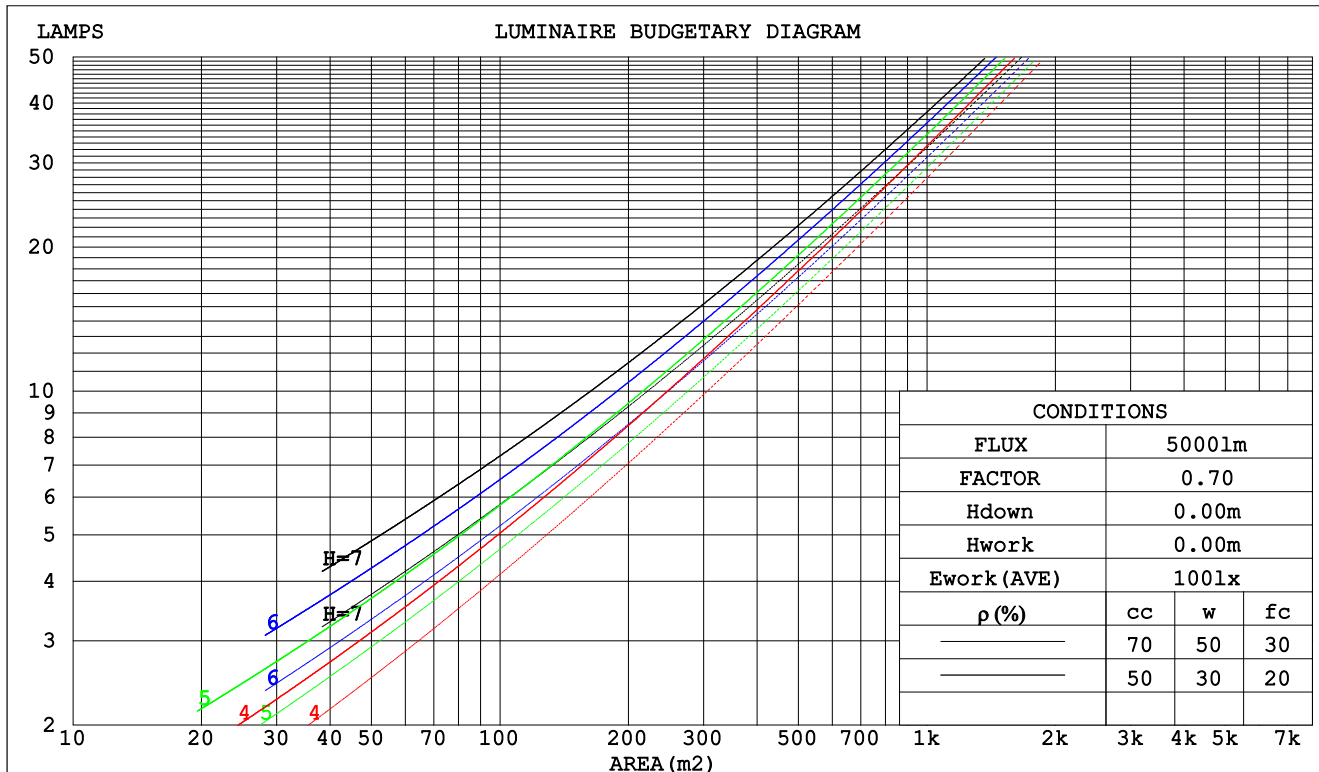
C Range: 0 - 360DEG  
C Interval: 30.0DEG  
Test Speed: HIGH  
Temperature:25.3DEG  
Operators:LPC  
Test Date:2021-12-21

$\gamma$  Range: 0 - 120DEG  
 $\gamma$  Interval: 1.0DEG  
Test System:EVERFINE GO-2000B\_V1 SYSTEM V2.0.362  
Humidity:65.0%  
Test Distance:9.200m [K=1.0000]  
Remarks:

## CU AND LUMINAIRE BUDGETARY ESTIMATE DIAGRAM

Test:U:24.00V I:0.2345A P:5.628W PF:1.000 Freq:50.00Hz Lamp Flux:36.9729x1 lm		
NAME: SF15-24V-3528-72-A	TYPE:硅胶	WEIGHT:
SPEC.:	DIM.: 21mm*11.5mm	SERIAL No.:2021122110
MFR.: OLYMPIA	SUR.:1*0.0115	Shielding Angle:

pcc	80%			70%			50%			30%			10%			0
pw	50%	30%	10%	50%	30%	10%	50%	30%	10%	50%	30%	10%	50%	30%	10%	0
pfc	20%			20%			20%			20%			20%			0
RCR	RCR:Room Cavity Ratio						Coefficients of Utilization(CU)									
0.0	1.19	1.19	1.19	1.16	1.16	1.16	1.10	1.10	1.10	1.06	1.06	1.06	1.01	1.01	1.01	.99
1.0	1.03	.99	.95	1.01	.97	.93	.96	.93	.90	.92	.90	.87	.88	.86	.84	.82
2.0	.90	.83	.77	.88	.81	.76	.84	.79	.74	.81	.76	.72	.77	.74	.70	.68
3.0	.79	.71	.64	.77	.70	.63	.74	.67	.62	.71	.66	.61	.68	.64	.60	.57
4.0	.70	.61	.54	.68	.60	.54	.66	.59	.53	.63	.57	.52	.61	.56	.51	.49
5.0	.62	.53	.47	.61	.53	.46	.59	.51	.46	.57	.50	.45	.55	.49	.44	.42
6.0	.56	.47	.41	.55	.47	.40	.53	.46	.40	.51	.45	.40	.50	.44	.39	.37
7.0	.51	.42	.36	.50	.42	.36	.48	.41	.35	.47	.40	.35	.45	.39	.35	.33
8.0	.46	.38	.32	.46	.38	.32	.44	.37	.32	.43	.36	.31	.42	.36	.31	.29
9.0	.43	.34	.29	.42	.34	.29	.41	.34	.28	.40	.33	.28	.38	.32	.28	.26
10.0	.39	.31	.26	.39	.31	.26	.38	.31	.26	.37	.30	.26	.36	.30	.25	.24



C Range: 0 - 360DEG  
 C Interval: 30.0DEG  
 Test Speed: HIGH  
 Temperature:25.3DEG  
 Operators:LPC  
 Test Date:2021-12-21

$\gamma$  Range: 0 - 120DEG  
 $\gamma$  Interval: 1.0DEG  
 Test System:EVERFINE GO-2000B\_V1 SYSTEM V2.0.362  
 Humidity:65.0%  
 Test Distance:9.200m [K=1.0000]  
 Remarks:

## WEC AND CCEC

Test:U:24.00V I:0.2345A P:5.628W PF:1.000 Freq:50.00Hz Lamp Flux:36.9729x1 lm		
NAME: SF15-24V-3528-72-A	TYPE: 硅胶	WEIGHT:
SPEC.:	DIM.: 21mm*11.5mm	SERIAL No.:2021122110
MFR.: OLYMPIA	SUR.:1*0.0115	Shielding Angle:

pcc	80%			70%			50%			30%			10%			0	
pw	50%	30%	10%	50%	30%	10%	50%	30%	10%	50%	30%	10%	50%	30%	10%	0	
pfc	20%			20%			20%			20%			20%			0	
RCR	RCR:Room Cavity Ratio						Wall Exitance Coeffcients(WEC)										
0.0																	
1.0	.316	.180	.057	.309	.176	.056	.295	.169	.054	.282	.163	.052	.270	.157	.051		
2.0	.295	.161	.050	.288	.159	.049	.276	.153	.048	.264	.148	.046	.254	.144	.045		
3.0	.271	.144	.043	.266	.142	.043	.255	.138	.042	.245	.134	.041	.235	.130	.040		
4.0	.250	.130	.038	.245	.128	.038	.235	.125	.037	.226	.121	.037	.218	.118	.036		
5.0	.231	.118	.034	.226	.116	.034	.217	.113	.033	.209	.111	.033	.202	.108	.032		
6.0	.214	.107	.031	.210	.106	.030	.202	.104	.030	.195	.101	.030	.188	.099	.029		
7.0	.199	.098	.028	.195	.097	.028	.188	.095	.027	.182	.093	.027	.176	.091	.027		
8.0	.186	.091	.026	.182	.090	.025	.176	.088	.025	.170	.086	.025	.165	.085	.025		
9.0	.174	.084	.023	.171	.083	.023	.165	.082	.023	.160	.080	.023	.155	.079	.023		
10.0	.163	.078	.022	.161	.078	.022	.156	.076	.021	.151	.075	.021	.146	.074	.021		

pcc	80%			70%			50%			30%			10%			0
pw	50%	30%	10%	50%	30%	10%	50%	30%	10%	50%	30%	10%	50%	30%	10%	0
pfc	20%			20%			20%			20%			20%			0
RCR	RCR:Room Cavity Ratio						Ceiling Cavity Exitance Coefficients(CCEC)									
0.0	.199	.199	.199	.170	.170	.170	.116	.116	.116	.067	.067	.067	.021	.021	.021	
1.0	.190	.165	.143	.162	.142	.123	.111	.097	.085	.064	.056	.049	.020	.018	.016	
2.0	.182	.141	.107	.156	.121	.092	.107	.084	.064	.061	.049	.038	.020	.016	.012	
3.0	.174	.123	.083	.149	.106	.072	.102	.074	.051	.059	.043	.030	.019	.014	.010	
4.0	.166	.110	.067	.143	.095	.058	.098	.066	.041	.057	.039	.024	.018	.013	.008	
5.0	.159	.100	.056	.136	.086	.049	.094	.060	.035	.054	.035	.020	.018	.012	.007	
6.0	.151	.091	.048	.130	.079	.042	.090	.055	.030	.052	.033	.018	.017	.011	.006	
7.0	.145	.084	.042	.124	.073	.037	.086	.051	.026	.050	.030	.016	.016	.010	.005	
8.0	.138	.079	.038	.119	.068	.033	.082	.048	.023	.048	.028	.014	.015	.009	.005	
9.0	.132	.074	.034	.114	.064	.030	.079	.045	.021	.046	.027	.013	.015	.009	.004	
10.0	.126	.069	.032	.109	.060	.028	.076	.042	.020	.044	.025	.012	.014	.008	.004	

C Range: 0 - 360DEG  
 C Interval: 30.0DEG  
 Test Speed: HIGH  
 Temperature:25.3DEG  
 Operators:LPC  
 Test Date:2021-12-21

γ Range: 0 - 120DEG  
 γ Interval: 1.0DEG  
 Test System:EVERFINE GO-2000B\_V1 SYSTEM V2.0.362  
 Humidity:65.0%  
 Test Distance:9.200m [K=1.0000]  
 Remarks:

## UGR(Unified Glare Rating) Table

Test:U:24.00V I:0.2345A P:5.628W PF:1.000 Freq:50.00Hz Lamp Flux:36.9729x1 lm											
NAME: SF15-24V-3528-72-A						TYPE:硅胶			WEIGHT:		
SPEC.:						DIM.: 21mm*11.5mm			SERIAL No.:2021122110		
MFR.: OLYMPIA						SUR.:1*0.0115			Shielding Angle:		
ceiling/cavity	0.7	0.7	0.5	0.5	0.3	0.7	0.7	0.5	0.5	0.3	
walls	0.5	0.3	0.5	0.3	0.3	0.5	0.3	0.5	0.3	0.3	
working plane	0.2	0.2	0.2	0.2	0.2	0.2	0.2	0.2	0.2	0.2	
Room dimensions		Viewed crosswise					Viewed endwise				
x = 2H y = 2H	25.1	26.6	25.4	26.9	27.1	24.6	26.1	24.9	26.3	26.5	
	3H	26.8	28.2	27.1	28.5	28.7	26.0	27.4	26.3	27.6	27.9
	4H	27.6	28.9	27.9	29.2	29.4	26.5	27.8	26.8	28.1	28.4
	6H	28.2	29.4	28.5	29.7	30.0	26.7	28.0	27.1	28.3	28.6
	8H	28.4	29.6	28.8	29.9	30.2	26.8	28.0	27.1	28.3	28.6
	12H	28.6	29.8	29.0	30.1	30.4	26.8	27.9	27.1	28.3	28.6
4H	2H	25.8	27.2	26.2	27.4	27.7	25.4	26.8	25.8	27.0	27.3
	3H	27.8	28.9	28.1	29.2	29.6	27.2	28.3	27.5	28.7	29.0
	4H	28.7	29.7	29.0	30.1	30.4	27.9	28.9	28.3	29.3	29.6
	6H	29.4	30.4	29.8	30.7	31.1	28.4	29.3	28.8	29.7	30.1
	8H	29.7	30.6	30.2	31.0	31.4	28.5	29.3	28.9	29.7	30.1
	12H	30.0	30.8	30.4	31.2	31.6	28.5	29.3	28.9	29.7	30.1
8H	4H	29.1	29.9	29.5	30.3	30.7	28.4	29.3	28.8	29.7	30.1
	6H	30.0	30.8	30.5	31.2	31.6	29.2	29.9	29.7	30.4	30.8
	8H	30.5	31.1	30.9	31.6	32.0	29.5	30.1	30.0	30.6	31.1
	12H	30.9	31.4	31.4	31.9	32.4	29.7	30.2	30.1	30.7	31.2
12H	4H	29.1	29.9	29.5	30.3	30.7	28.5	29.3	28.9	29.7	30.1
	6H	30.2	30.8	30.6	31.3	31.7	29.4	30.0	29.9	30.5	31.0
	8H	30.7	31.2	31.2	31.7	32.2	29.8	30.3	30.3	30.8	31.3
Variations with the observer position at spacings:											
S = 1.0H	+ 0.1 / - 0.2					+ 0.2 / - 0.2					
1.5H	+ 0.2 / - 0.3					+ 0.3 / - 0.4					
2.0H	+ 0.1 / - 0.4					+ 0.3 / - 0.6					

CIE Pub.117, 36.97 lm Total Lamp Luminous Flux Correct (8log(F/F0) = -11.5)

C Range: 0 - 360DEG  
C Interval: 30.0DEG  
Test Speed: HIGH  
Temperature:25.3DEG  
Operators:LPC  
Test Date:2021-12-21

γ Range: 0 - 120DEG  
γ Interval: 1.0DEG  
Test System:EVERFINE GO-2000B\_V1 SYSTEM V2.0.362  
Humidity:65.0%  
Test Distance:9.200m [K=1.0000]  
Remarks:

## UTILIZATION FACTORS TABLE

Test:U:24.00V I:0.2345A P:5.628W PF:1.000 Freq:50.00Hz Lamp Flux:36.9729x1 lm		
NAME: SF15-24V-3528-72-A	TYPE: 硅胶	WEIGHT:
SPEC.:	DIM.: 21mm*11.5mm	SERIAL No.:2021122110
MFR.: OLYMPIA	SUR.:1*0.0115	Shielding Angle:

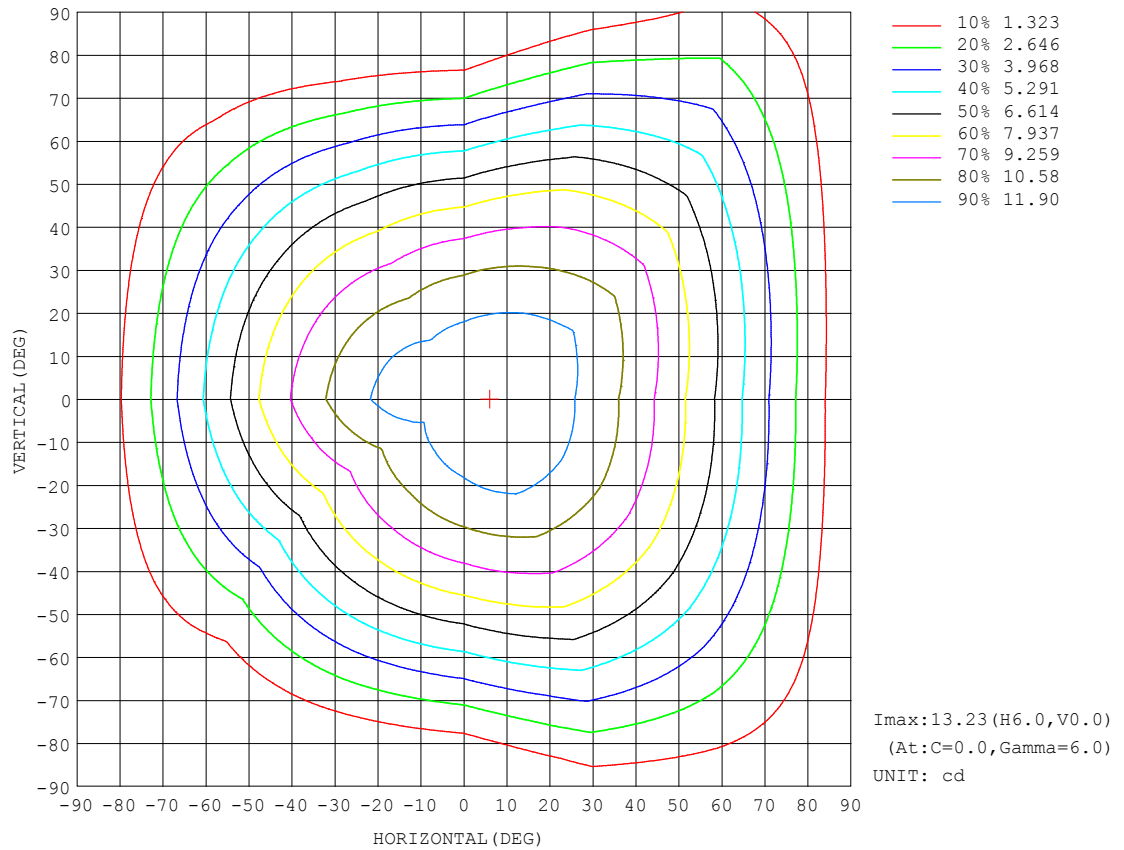
REFLECTANCE										
Ceiling	0.8	0.8	0.8	0.7	0.7	0.7	0.5	0.5	0.5	0
Walls	0.7	0.5	0.3	0.7	0.5	0.3	0.7	0.5	0.3	0
Working plane	0.2	0.2	0.2	0.2	0.2	0.2	0.2	0.2	0.2	0
ROOM INDEX	UTILIZATION FACTORS (PERCENT) $k(RI) \times RCR = 5$									
$k = 0.60$	57	45	38	56	45	38	55	45	38	32
0.80	67	55	48	66	55	48	64	54	47	40
1.00	75	64	57	74	64	56	72	65	56	49
1.25	82	72	65	81	71	64	78	70	63	56
1.50	87	77	70	86	76	70	83	75	69	61
2.00	94	85	79	92	84	78	89	82	77	68
2.50	98	90	84	96	89	83	92	86	81	73
3.00	102	94	89	99	93	88	95	90	85	77
4.00	106	100	95	103	98	93	99	94	91	81
5.00	108	103	99	105	101	97	101	97	94	84
ROOM INDEX	UF (total)									Direct
According to DIN EN 13032-2 2004			Suspended					SHRNOM = 1.25		

C Range: 0 - 360DEG  
 C Interval: 30.0DEG  
 Test Speed: HIGH  
 Temperature: 25.3DEG  
 Operators: LPC  
 Test Date: 2021-12-21

γ Range: 0 - 120DEG  
 γ Interval: 1.0DEG  
 Test System: EVERFINE GO-2000B\_V1 SYSTEM V2.0.362  
 Humidity: 65.0%  
 Test Distance: 9.200m [K=1.0000]  
 Remarks:

## ISOCANDELA DIAGRAM

Test:U:24.00V I:0.2345A P:5.628W PF:1.000 Freq:50.00Hz Lamp Flux:36.9729x1 lm		
NAME: SF15-24V-3528-72-A	TYPE: 硅胶	WEIGHT:
SPEC.:	DIM.: 21mm*11.5mm	SERIAL No.:2021122110
MFR.: OLYMPIA	SUR.:1*0.0115	Shielding Angle:



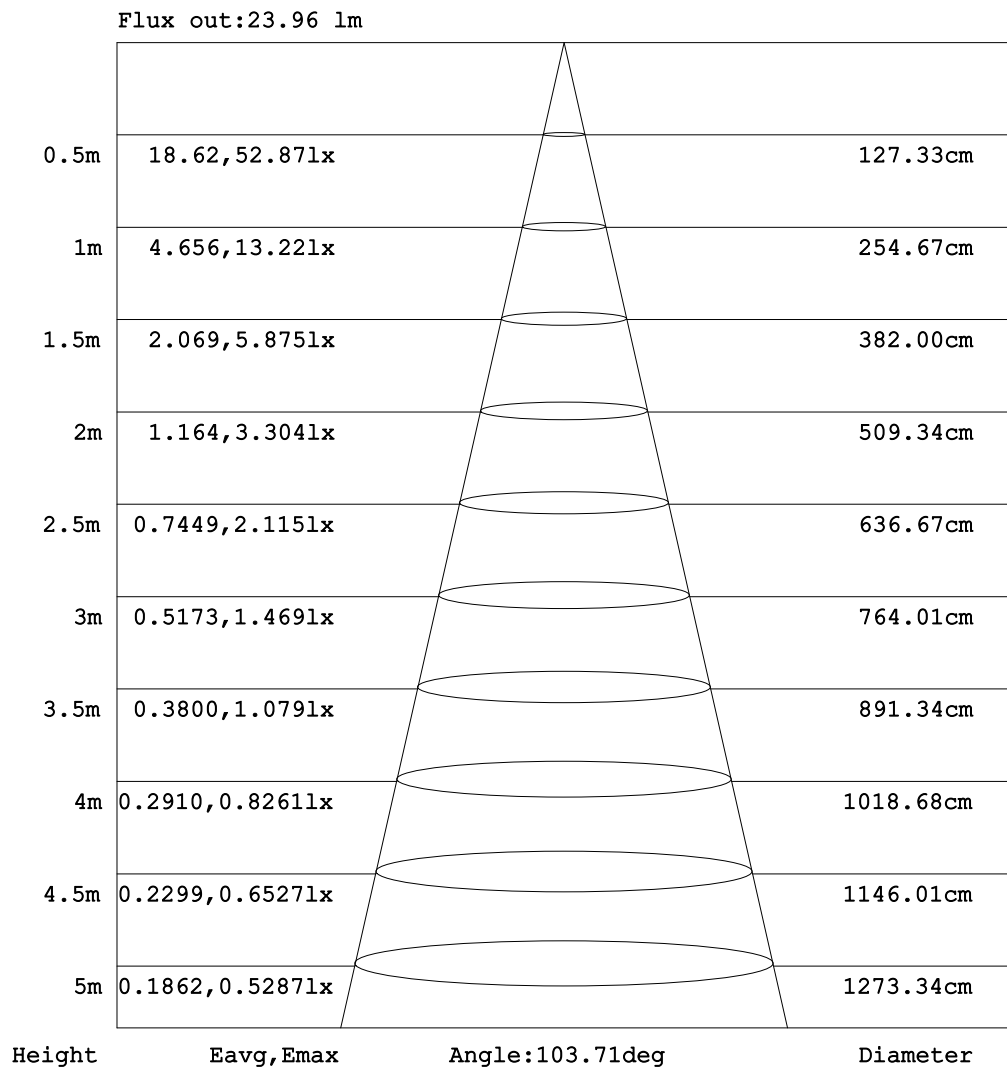
C Range: 0 - 360DEG  
C Interval: 30.0DEG  
Test Speed: HIGH  
Temperature:25.3DEG  
Operators:LPC  
Test Date:2021-12-21

$\gamma$  Range: 0 - 120DEG  
 $\gamma$  Interval: 1.0DEG  
Test System:EVERFINE GO-2000B\_V1 SYSTEM V2.0.362  
Humidity:65.0%  
Test Distance:9.200m [K=1.0000]  
Remarks:



## AAI Figure

Test:U:24.00V I:0.2345A P:5.628W PF:1.000 Freq:50.00Hz Lamp Flux:36.9729x1 lm		
NAME: SF15-24V-3528-72-A	TYPE: 硅胶	WEIGHT:
SPEC.:	DIM.: 21mm*11.5mm	SERIAL No.:2021122110
MFR.: OLYMPIA	SUR.:1*0.0115	Shielding Angle:



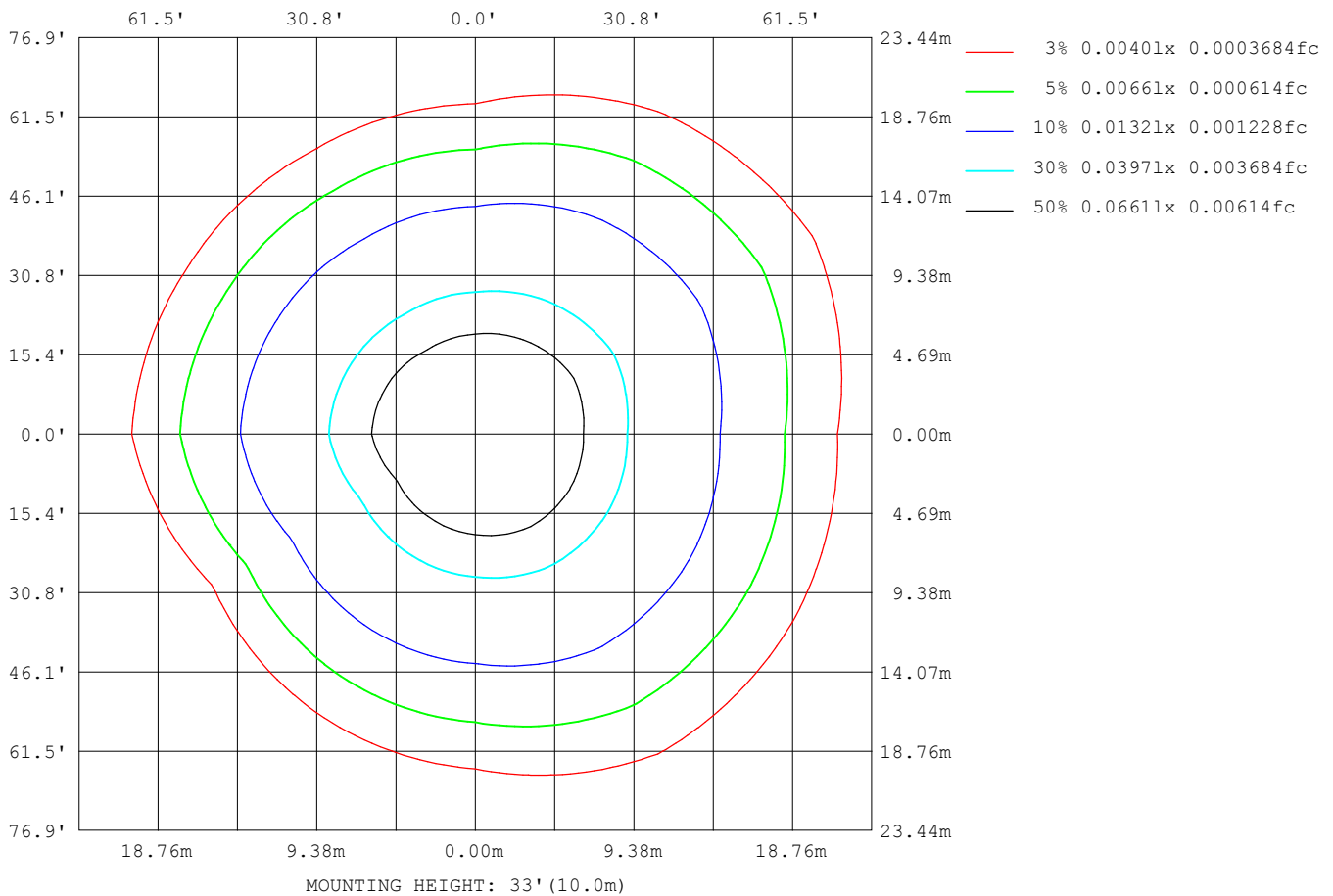
Note: The Curves indicate the illuminated area and the average illumination when the luminaire is at different distance.

C Range: 0 - 360DEG  
 C Interval: 30.0DEG  
 Test Speed: HIGH  
 Temperature: 25.3DEG  
 Operators: LPC  
 Test Date: 2021-12-21

γ Range: 0 - 120DEG  
 γ Interval: 1.0DEG  
 Test System: EVERFINE GO-2000B\_V1 SYSTEM V2.0.362  
 Humidity: 65.0%  
 Test Distance: 9.200m [K=1.0000]  
 Remarks:

## ISOLUX DIAGRAM

Test:U:24.00V I:0.2345A P:5.628W PF:1.000 Freq:50.00Hz Lamp Flux:36.9729x1 lm		
NAME: SF15-24V-3528-72-A	TYPE: 硅胶	WEIGHT:
SPEC.:	DIM.: 21mm*11.5mm	SERIAL No.:2021122110
MFR.: OLYMPIA	SUR.:1*0.0115	Shielding Angle:



C Range: 0 - 360DEG  
C Interval: 30.0DEG  
Test Speed: HIGH  
Temperature:25.3DEG  
Operators:LPC  
Test Date:2021-12-21

$\gamma$  Range: 0 - 120DEG  
 $\gamma$  Interval: 1.0DEG  
Test System:EVERFINE GO-2000B\_V1 SYSTEM V2.0.362  
Humidity:65.0%  
Test Distance:9.200m [K=1.0000]  
Remarks:

## LED Avg.L Report

Test:U:24.00V I:0.2345A P:5.628W PF:1.000 Freq:50.00Hz Lamp Flux:36.9729x1 lm		
NAME: SF15-24V-3528-72-A	TYPE:硅胶	WEIGHT:
SPEC.:	DIM.: 21mm*11.5mm	SERIAL No.:2021122110
MFR.: OLYMPIA	SUR.:1*0.0115	Shielding Angle:

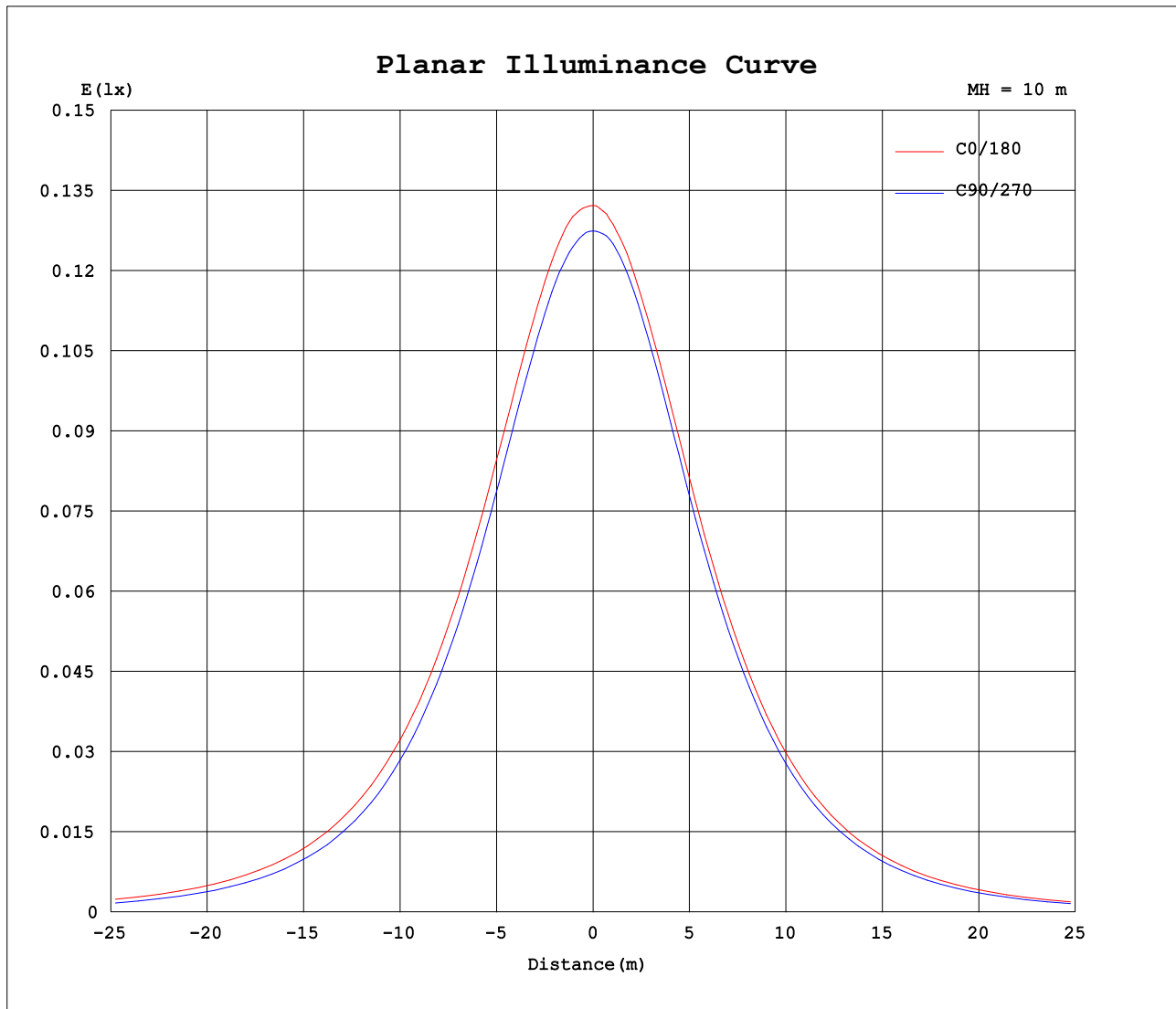
AvgL	cd/m2
L_0~180 (65) av	984
L_0~180 (75) av	890
L_0~180 (85) av	868
L_90~270 (65) av	790
L_90~270 (75) av	576
L_90~270 (85) av	125
L_45 (65) av	951
L_45 (75) av	880
L_45 (85) av	1048

Standard: GB/T 29293-2012

C Range: 0 - 360DEG  
C Interval: 30.0DEG  
Test Speed: HIGH  
Temperature:25.3DEG  
Operators:LPC  
Test Date:2021-12-21

γ Range: 0 - 120DEG  
γ Interval: 1.0DEG  
Test System:EVERFINE GO-2000B\_V1 SYSTEM V2.0.362  
Humidity:65.0%  
Test Distance:9.200m [K=1.0000]  
Remarks:

## Planar Illuminance Curve



C Range: 0 - 360DEG  
C Interval: 30.0DEG  
Test Speed: HIGH  
Temperature: 25.3DEG  
Operators: LPC  
Test Date: 2021-12-21

$\gamma$  Range: 0 - 120DEG  
 $\gamma$  Interval: 1.0DEG  
Test System: EVERFINE GO-2000B\_V1 SYSTEM V2.0.362  
Humidity: 65.0%  
Test Distance: 9.200m [K=1.0000]  
Remarks:

## LUMINOUS DISTRIBUTION INTENSITY DATA

Test:U:24.00V I:0.2345A P:5.628W PF:1.000 Freq:50.00Hz Lamp Flux:36.9729x1 lm		
NAME: SF15-24V-3528-72-A	TYPE: 硅胶	WEIGHT:
SPEC.:	DIM.: 21mm*11.5mm	SERIAL No.:2021122110
MFR.: OLYMPIA	SUR.:1*0.0115	Shielding Angle:

Table--1

UNIT: cd

C (DEG) γ (DEG)	0	30	60	90	120	150	180	210	240	270	300	330						
0	13.2	13.1	12.9	12.7	12.7	12.7	13.2	13.1	12.9	12.7	12.7	12.7						
5	13.2	13.2	12.9	12.7	12.6	12.4	13.1	13.0	12.7	12.7	12.8	12.8						
10	13.1	13.1	12.9	12.5	12.2	12.0	12.9	12.7	12.4	12.5	12.7	12.9						
15	12.8	12.8	12.7	12.2	11.8	11.5	12.5	12.3	12.0	12.2	12.5	12.9						
20	12.5	12.5	12.4	11.7	11.2	10.9	12.1	11.8	11.4	11.7	12.2	12.6						
25	12.0	12.1	11.9	11.2	10.6	10.2	11.5	11.2	10.8	11.1	11.7	12.3						
30	11.4	11.5	11.3	10.5	9.88	9.43	10.9	10.5	10.1	10.4	11.2	11.9						
35	10.7	10.9	10.7	9.77	9.10	8.59	10.2	9.74	9.32	9.64	10.5	11.4						
40	9.96	10.2	9.96	8.95	8.25	7.68	9.33	8.90	8.49	8.80	9.85	10.8						
45	9.13	9.36	9.19	8.05	7.34	6.72	8.44	7.98	7.59	7.87	9.16	10.1						
50	8.22	8.48	8.36	7.06	6.40	5.73	7.48	7.00	6.66	6.88	8.39	9.32						
55	7.26	7.54	7.46	6.06	5.39	4.68	6.48	5.98	5.66	5.86	7.53	8.49						
60	6.27	6.57	6.54	5.02	4.35	3.62	5.43	4.91	4.62	4.78	6.62	7.58						
65	5.22	5.55	5.54	3.96	3.31	2.57	4.34	3.84	3.58	3.72	5.65	6.66						
70	4.16	4.49	4.52	2.87	2.27	1.59	3.25	2.75	2.51	2.63	4.65	5.66						
75	3.10	3.44	3.49	1.83	1.32	0.81	2.19	1.73	1.51	1.60	3.63	4.64						
80	2.07	2.37	2.46	0.89	0.57	0.31	1.27	0.90	0.65	0.70	2.60	3.60						
85	1.17	1.40	1.50	0.17	0.21	0.15	0.57	0.36	0.15	0.08	1.59	2.56						
90	0.56	0.63	0.67	0.08	0.17	0.15	0.18	0.14	0.09	0.02	0.72	1.58						
95	0.26	0.23	0.24	0.08	0.17	0.15	0.09	0.12	0.09	0.02	0.19	0.77						
100	0.14	0.13	0.15	0.10	0.16	0.15	0.09	0.10	0.09	0.02	0.06	0.29						
105	0.13	0.10	0.14	0.11	0.15	0.15	0.09	0.08	0.09	0.03	0.06	0.13						
110	0.13	0.07	0.13	0.11	0.11	0.15	0.09	0.06	0.08	0.04	0.06	0.09						
115	0.13	0.04	0.07	0.09	0.06	0.15	0.09	0.03	0.05	0.05	0.06	0.09						
120	0.04	0.01	0.01	0.03	0.02	0.15	0.09	0.01	0.01	0.06	0.06	0.09						
125	0.00	0.00	0.00	0.00	0.00	0.00	0.00	0.00	0.00	0.00	0.00	0.00						
130	0.00	0.00	0.00	0.00	0.00	0.00	0.00	0.00	0.00	0.00	0.00	0.00						
135	0.00	0.00	0.00	0.00	0.00	0.00	0.00	0.00	0.00	0.00	0.00	0.00						
140	0.00	0.00	0.00	0.00	0.00	0.00	0.00	0.00	0.00	0.00	0.00	0.00						
145	0.00	0.00	0.00	0.00	0.00	0.00	0.00	0.00	0.00	0.00	0.00	0.00						
150	0.00	0.00	0.00	0.00	0.00	0.00	0.00	0.00	0.00	0.00	0.00	0.00						
155	0.00	0.00	0.00	0.00	0.00	0.00	0.00	0.00	0.00	0.00	0.00	0.00						
160	0.00	0.00	0.00	0.00	0.00	0.00	0.00	0.00	0.00	0.00	0.00	0.00						
165	0.00	0.00	0.00	0.00	0.00	0.00	0.00	0.00	0.00	0.00	0.00	0.00						
170	0.00	0.00	0.00	0.00	0.00	0.00	0.00	0.00	0.00	0.00	0.00	0.00						
175	0.00	0.00	0.00	0.00	0.00	0.00	0.00	0.00	0.00	0.00	0.00	0.00						
180	0.00	0.00	0.00	0.00	0.00	0.00	0.00	0.00	0.00	0.00	0.00	0.00						

C Range: 0 - 360DEG  
C Interval: 30.0DEG  
Test Speed: HIGH  
Temperature:25.3DEG  
Operators:LPC  
Test Date:2021-12-21

γ Range: 0 - 120DEG  
γ Interval: 1.0DEG  
Test System:EVERFINE GO-2000B\_V1 SYSTEM V2.0.362  
Humidity:65.0%  
Test Distance:9.200m [K=1.0000]  
Remarks:

## Photometric Data Table [cd]

G/C	0.0	30.0	60.0	90.0	120.0	150.0	180.0	210.0	240.0	270.0
0.0	13.22	13.15	12.89	12.75	12.73	12.66	13.22	13.15	12.89	12.75
3.0	13.22	13.15	12.92	12.72	12.63	12.50	13.17	13.08	12.80	12.74
6.0	13.23	13.16	12.93	12.65	12.48	12.29	13.08	12.95	12.66	12.71
9.0	13.15	13.08	12.91	12.54	12.29	12.05	12.95	12.79	12.49	12.58
12.0	13.02	12.99	12.86	12.40	12.06	11.79	12.76	12.57	12.25	12.40
15.0	12.85	12.84	12.71	12.19	11.79	11.47	12.54	12.31	11.98	12.17
18.0	12.63	12.66	12.52	11.93	11.48	11.13	12.29	12.03	11.68	11.90
21.0	12.38	12.44	12.28	11.65	11.12	10.75	11.99	11.72	11.32	11.57
24.0	12.08	12.17	12.01	11.32	10.73	10.34	11.67	11.34	10.93	11.24
27.0	11.77	11.85	11.70	10.94	10.32	9.889	11.29	10.95	10.52	10.82
30.0	11.40	11.53	11.34	10.54	9.882	9.427	10.88	10.52	10.09	10.42
33.0	11.00	11.15	10.96	10.09	9.415	8.934	10.45	10.06	9.633	9.962
36.0	10.58	10.74	10.55	9.608	8.937	8.411	9.989	9.580	9.160	9.475
39.0	10.11	10.31	10.11	9.105	8.425	7.878	9.497	9.073	8.662	8.973
42.0	9.626	9.839	9.651	8.587	7.897	7.311	8.979	8.535	8.140	8.430
45.0	9.128	9.356	9.189	8.049	7.344	6.718	8.436	7.983	7.592	7.872
48.0	8.591	8.838	8.691	7.451	6.776	6.139	7.868	7.395	7.034	7.284
51.0	8.033	8.296	8.174	6.868	6.199	5.516	7.280	6.797	6.461	6.696
54.0	7.455	7.733	7.641	6.250	5.596	4.888	6.672	6.199	5.863	6.078
57.0	6.867	7.155	7.088	5.657	4.983	4.255	6.064	5.565	5.255	5.440
60.0	6.269	6.567	6.535	5.019	4.354	3.621	5.425	4.907	4.621	4.781
63.0	5.651	5.953	5.953	4.375	3.731	2.983	4.772	4.264	3.993	4.149
66.0	5.018	5.336	5.339	3.747	3.098	2.360	4.124	3.616	3.355	3.490
69.0	4.375	4.702	4.726	3.089	2.470	1.762	3.471	2.957	2.717	2.831
72.0	3.742	4.064	4.123	2.450	1.872	1.250	2.822	2.334	2.088	2.219
75.0	3.103	3.436	3.485	1.828	1.324	0.8131	2.194	1.726	1.506	1.600
78.0	2.470	2.787	2.872	1.260	0.8308	0.4716	1.612	1.202	0.9634	1.032
81.0	1.866	2.159	2.273	0.7171	0.4634	0.2608	1.109	0.7701	0.5164	0.5441
84.0	1.329	1.566	1.666	0.2803	0.2469	0.1508	0.6922	0.4382	0.2154	0.1669
87.0	0.8859	1.044	1.148	0.0653	0.1810	0.1508	0.3712	0.2317	0.0854	0.0304
90.0	0.5588	0.6273	0.6698	0.0754	0.1726	0.1508	0.1804	0.1359	0.0854	0.0151
93.0	0.3423	0.3612	0.3526	0.0804	0.1678	0.1508	0.0905	0.1264	0.0854	0.0151
96.0	0.2117	0.1906	0.2065	0.0804	0.1636	0.1508	0.0905	0.1199	0.0854	0.0151
99.0	0.1409	0.1386	0.1574	0.0905	0.1594	0.1508	0.0905	0.1061	0.0854	0.0151
102.0	0.1317	0.1205	0.1466	0.1023	0.1552	0.1508	0.0905	0.0922	0.0854	0.0151
105.0	0.1280	0.1025	0.1358	0.1072	0.1510	0.1508	0.0905	0.0784	0.0854	0.0252
108.0	0.1286	0.0844	0.1336	0.1097	0.1243	0.1508	0.0905	0.0646	0.0906	0.0352
111.0	0.1293	0.0663	0.1201	0.1123	0.0977	0.1508	0.0905	0.0507	0.0712	0.0352
114.0	0.1300	0.0482	0.0841	0.1013	0.0710	0.1508	0.0905	0.0369	0.0518	0.0452
117.0	0.0930	0.0301	0.0480	0.0633	0.0444	0.1508	0.0905	0.0231	0.0324	0.0552
120.0	0.0372	0.0121	0.0120	0.0253	0.0178	0.1508	0.0905	0.0092	0.0129	0.0603
G/C	300.0	330.0								
0.0	12.73	12.66								
3.0	12.76	12.76								
6.0	12.75	12.85								
9.0	12.73	12.87								
12.0	12.63	12.87								
15.0	12.49	12.85								
18.0	12.31	12.73								
21.0	12.08	12.55								
24.0	11.81	12.35								
27.0	11.50	12.13								
30.0	11.16	11.88								
33.0	10.78	11.61								
36.0	10.39	11.28								
39.0	9.995	10.92								
42.0	9.573	10.52								
45.0	9.156	10.09								
48.0	8.708	9.646								
51.0	8.225	9.169								
54.0	7.703	8.666								
57.0	7.170	8.143								
60.0	6.622	7.580								
63.0	6.049	7.028								
66.0	5.461	6.460								
69.0	4.853	5.857								
72.0	4.240	5.259								
75.0	3.632	4.641								
78.0	3.008	4.017								
81.0	2.390	3.389								
84.0	1.792	2.761								
87.0	1.230	2.143								
90.0	0.7222	1.585								

C Range: 0 - 360DEG  
 C Interval: 30.0DEG  
 Test Speed: HIGH  
 Temperature: 25.3DEG  
 Operators: LPC  
 Test Date: 2021-12-21

γ Range: 0 - 120DEG  
 γ Interval: 1.0DEG  
 Test System: EVERFINE GO-2000B\_V1 SYSTEM V2.0.362  
 Humidity: 65.0%  
 Test Distance: 9.200m [K=1.0000]  
 Remarks:

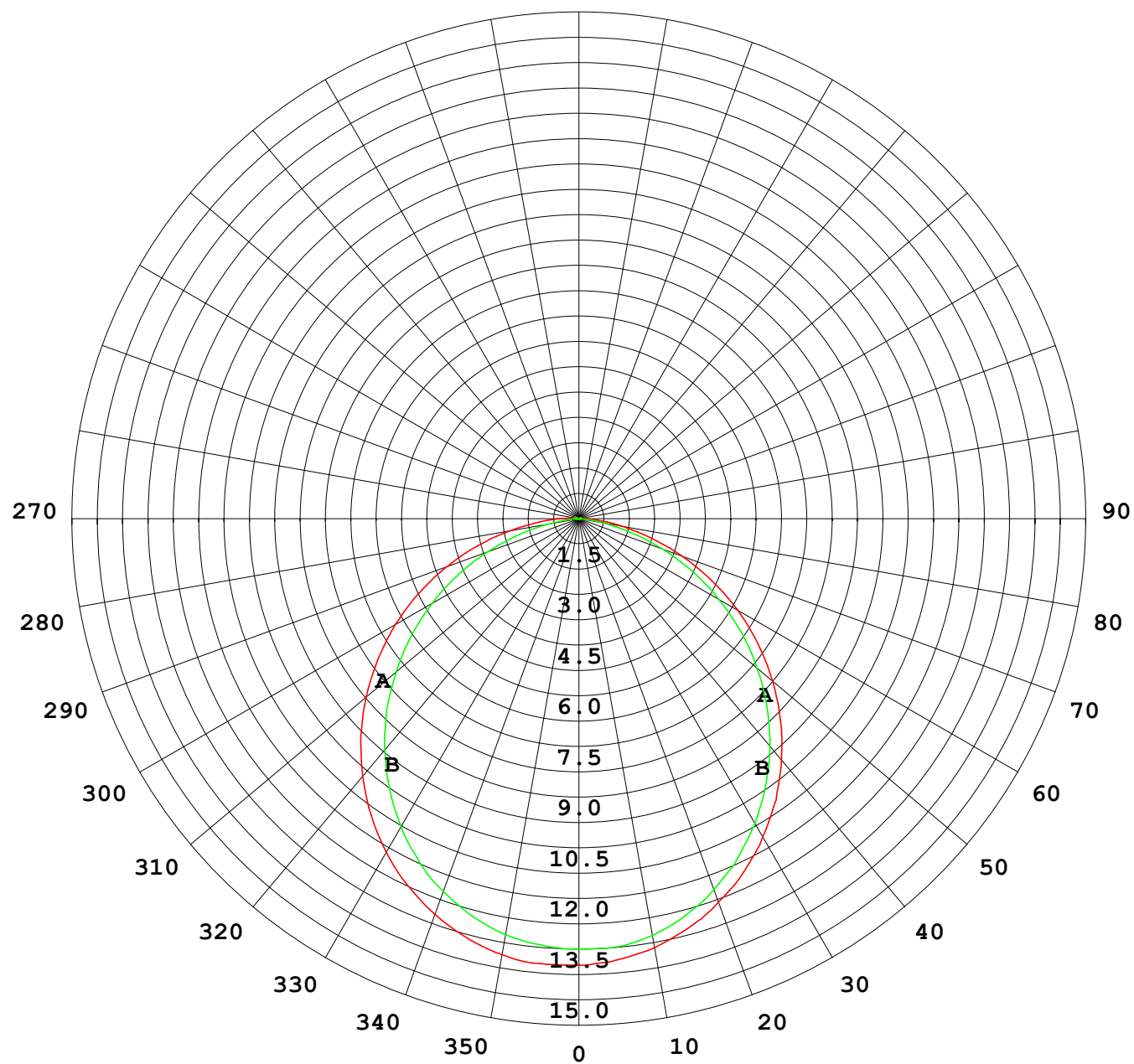
## Photometric Data Table [cd]

93.0	0.3408	1.052
96.0	0.1255	0.6546
99.0	0.0603	0.3777
102.0	0.0603	0.2013
105.0	0.0603	0.1258
108.0	0.0603	0.0955
111.0	0.0603	0.0854
114.0	0.0603	0.0854
117.0	0.0603	0.0854
120.0	0.0603	0.0854

C Range: 0 - 360DEG  
C Interval: 30.0DEG  
Test Speed: HIGH  
Temperature: 25.3DEG  
Operators: LPC  
Test Date: 2021-12-21

γ Range: 0 - 120DEG  
γ Interval: 1.0DEG  
Test System: EVERFINE GO-2000B\_V1 SYSTEM V2.0.362  
Humidity: 65.0%  
Test Distance: 9.200m [K=1.0000]  
Remarks:

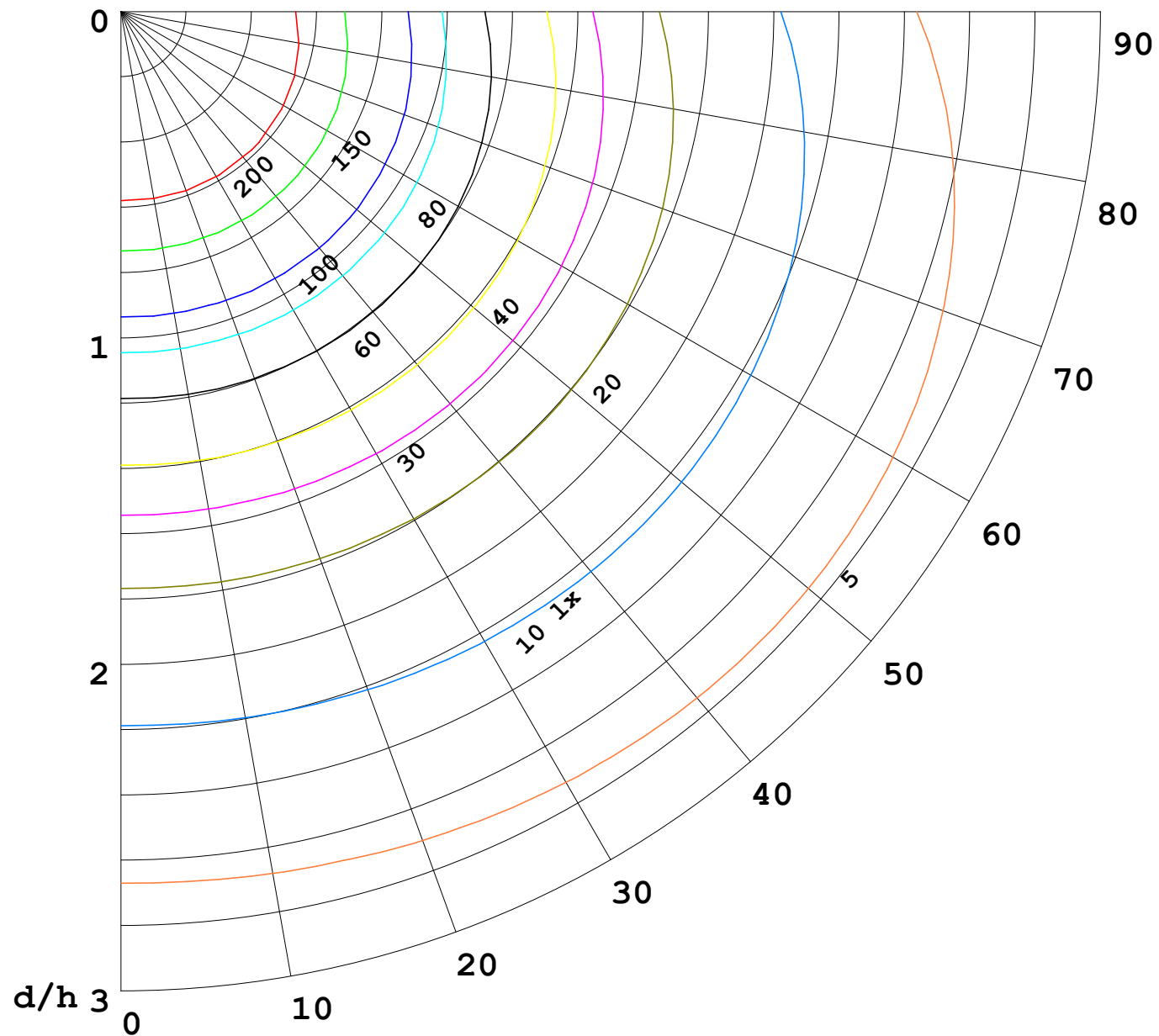
I (cd)





1000 lm

$\kappa = 1$



F = 5000 lm  
 K = 0.7  
 Hcc = 0.0 m  
 Hfc = 0.0 m  
 Eave = 100 lx

	Pcc	Pw	Pfc
—	70	50	30
—	50	30	20

