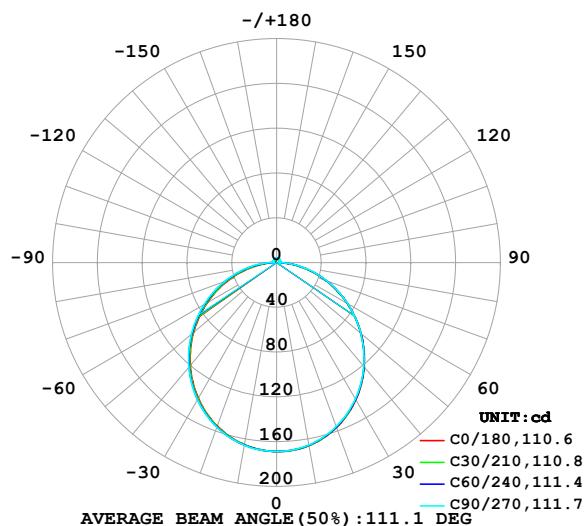


LUMINAIRE PHOTOMETRIC TEST REPORT

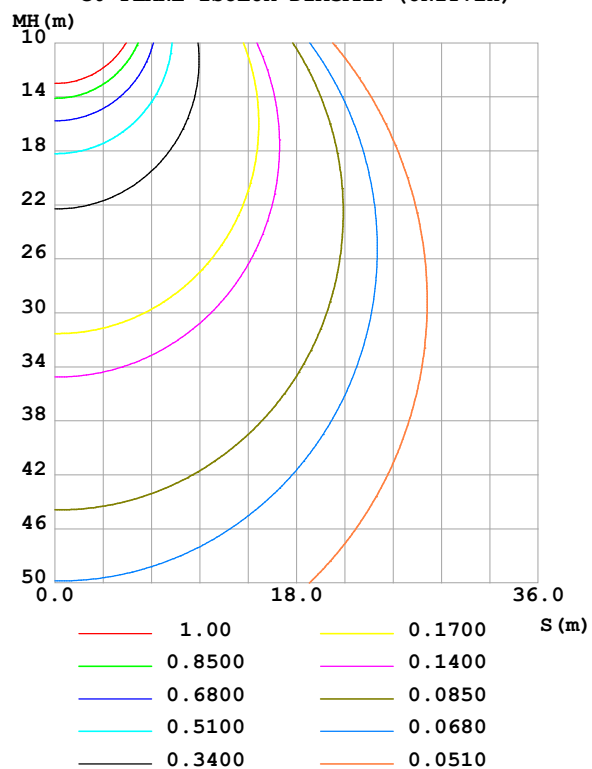
Test:U:24.00V I:0.4972A P:11.93W PF:1.000 Freq:0Hz Lamp Flux:502.135x1 lm		
NAME: SF15-24V-5050-60-4500K	TYPE:	WEIGHT:
SPEC.:	DIM.: Length=1m	SERIAL No.:
MFR.: OLympia lighting	SUR.:	Shielding Angle:

DATA OF LAMP		PHOTOMETRIC DATA				Eff: 42.08 lm/W
MODEL	5050	I _{max} (cd)	168.8	S/MH(C0/180)	1.24	
NOMINAL POWER(W)	12	LOR(%)	100.0	S/MH(C90/270)	1.25	
RATED VOLTAGE(V)	24	TOTAL FLUX(lm)	502.14	η UP,DN(C0-180)	1.9,47.9	
NOMINAL FLUX(lm)	502.135	CIE CLASS	DIRECT	η UP,DN(C180-360)	2.0,48.2	
LAMPS INSIDE	1	η up (%)	3.8	CIBSE SHR NOM	1.25	
TEST VOLTAGE(V)		η down (%)	96.2	CIBSE SHR MAX	1.35	

LUMINOUS INTENSITY DISTRIBUTION DIAGRAM



C0 PLANE ISOLUX DIAGRAM (UNIT:lx)



C Range: 0 - 360DEG
C Interval: 30.0DEG
Test Speed: HIGH
Temperature: 25.3 °C
Operators:
Test Date: 2025-03-04

γ Range: 0 - 180DEG
γ Interval: 1.0DEG
Test System: EVERFINE GO-2000B_V1 SYSTEM V2.00.488
Humidity: 65.0%
Test Distance: 6.360m [K=1.0000]
Remarks:

ZONAL FLUX DIAGRAM

ZONAL FLUX DIAGRAM:

γ	C0	C45	C90	C135	C180	C225	C270	C315	γ	Φ zone	Φ total	%lum,lamp
10	166.1	165.9	165.4	165.3	165.1	165.4	165.7	166.0	0- 10	15.96	15.96	3.18,3.18
20	156.7	156.4	155.9	155.6	155.3	156.0	156.4	156.7	10- 20	45.60	61.56	12.3,12.3
30	141.6	141.3	140.8	140.4	139.9	140.9	141.5	141.7	20- 30	68.76	130.3	26,26
40	121.8	121.4	121.1	120.5	120.0	121.2	122.0	122.0	30- 40	82.33	212.7	42.3,42.3
50	98.53	98.22	98.14	97.35	96.77	98.14	99.23	98.82	40- 50	84.87	297.5	59.3,59.3
60	73.01	72.88	73.27	72.22	71.50	73.17	74.63	73.70	50- 60	76.65	374.2	74.5,74.5
70	46.79	46.97	47.79	46.61	45.43	47.67	49.50	48.03	60- 70	59.57	433.7	86.4,86.4
80	21.71	22.12	23.22	21.66	20.18	22.80	25.19	23.36	70- 80	36.70	470.4	93.7,93.7
90	3.301	2.881	2.498	2.591	2.420	3.043	3.475	3.510	80- 90	12.45	482.9	96.2,96.2
100	2.092	2.298	2.755	2.549	1.960	2.787	3.439	2.789	90-100	2.788	485.7	96.7,96.7
110	2.406	2.546	2.920	2.822	2.231	2.995	3.569	3.016	100-110	2.866	488.6	97.3,97.3
120	2.708	2.799	3.073	3.065	2.507	3.153	3.644	3.166	110-120	2.903	491.5	97.9,97.9
130	2.959	3.025	3.289	3.286	2.775	3.283	3.676	3.279	120-130	2.793	494.2	98.4,98.4
140	3.166	3.236	3.515	3.490	3.052	3.420	3.696	3.378	130-140	2.544	496.8	98.9,98.9
150	3.411	3.523	3.731	3.695	3.349	3.576	3.757	3.488	140-150	2.175	499.0	99.4,99.4
160	3.722	3.777	3.919	3.890	3.640	3.746	3.832	3.659	150-160	1.696	500.7	99.7,99.7
170	3.875	3.960	4.060	4.040	3.876	3.919	3.947	3.891	160-170	1.092	501.8	99.9,99.9
180	3.985	4.049	4.104	4.075	3.988	4.051	4.098	4.073	170-180	0.3812	502.1	100,100
DEG	LUMINOUS INTENSITY:cd									UNIT:lm		

Conical surface Flux(90deg): 255.47 lm

%lum = 50.9%

%lamp = 50.9%

Conical surface Flux(130deg): 406.54 lm

%lum = 81.0%

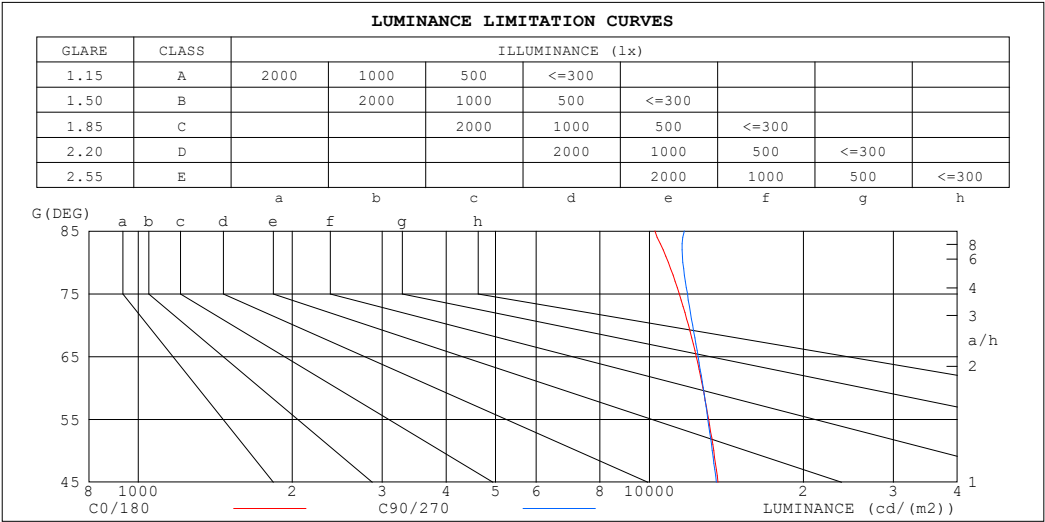
%lamp = 81.0%

C Range: 0 - 360DEG
 C Interval: 30.0DEG
 Test Speed: HIGH
 Temperature:25.3℃
 Operators:
 Test Date:2025-03-04

γ Range: 0 - 180DEG
 γ Interval: 1.0DEG
 Test System:EVERFINE GO-2000B_V1 SYSTEM V2.00.488
 Humidity:65.0%
 Test Distance:6.360m [K=1.0000]
 Remarks:

LUMINANCE LIMITATION CURVES

Test:U:24.00V I:0.4972A P:11.93W PF:1.000 Freq:0Hz Lamp Flux:502.135x1 lm		
NAME: SF15-24V-5050-60-4500K	TYPE:	WEIGHT:
SPEC.:	DIM.: Length=1m	SERIAL No.:
MFR.: OLympia lighting	SUR.:	Shielding Angle:



LUMINANCE cd/(m2)		
G (DEG)	C0/180	C90/270
85	10249	11696
80	10889	11622
75	11437	11863
70	11917	12144
65	12345	12442
60	12718	12735
55	13050	13006
50	13352	13269
45	13614	13512

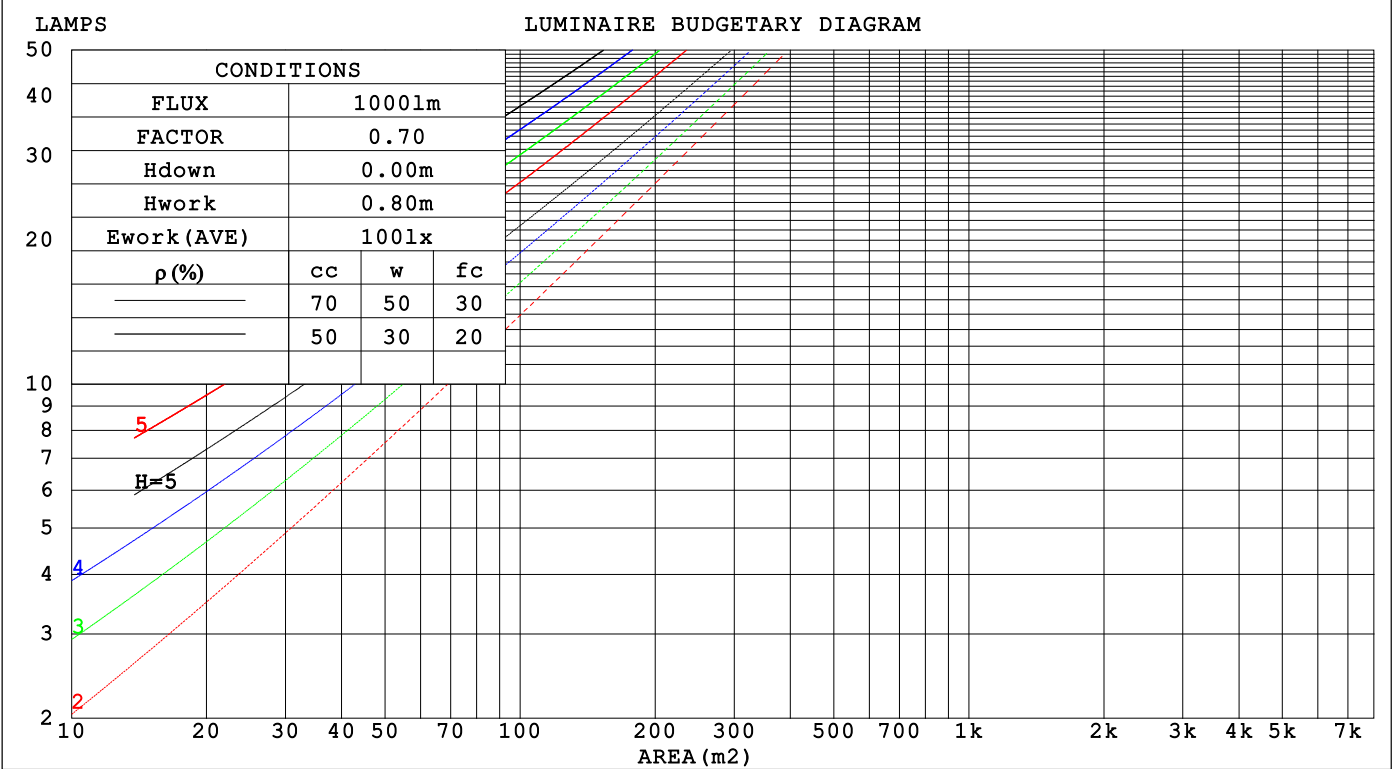
C Range: 0 - 360DEG
C Interval: 30.0DEG
Test Speed: HIGH
Temperature:25.3℃
Operators:
Test Date:2025-03-04

γ Range: 0 - 180DEG
γ Interval: 1.0DEG
Test System:EVERFINE GO-2000B_V1 SYSTEM V2.00.488
Humidity:65.0%
Test Distance:6.360m [K=1.0000]
Remarks:

CU AND LUMINAIRE BUDGETARY ESTIMATE DIAGRAM

Test:U:24.00V I:0.4972A P:11.93W PF:1.000 Freq:0Hz		
Lamp Flux:502.135x1 lm		
NAME: SF15-24V-5050-60-4500K	TYPE:	WEIGHT:
SPEC.:	DIM.: Length=1m	SERIAL No.:
MFR.: OLYMPIA lighting	SUR.:	Shielding Angle:

pcc	80%			70%			50%			30%			10%			0
pw	50%	30%	10%	50%	30%	10%	50%	30%	10%	50%	30%	10%	50%	30%	10%	0
pfc	20%			20%			20%			20%			20%			0
RCR	RCR:Room Cavity Ratio			Coefficients of Utilization(CU)												
0.0	1.18	1.18	1.18	1.15	1.15	1.15	1.09	1.09	1.09	1.04	1.04	1.04	.99	.99	.99	.96
1.0	1.03	.98	.94	.00	.96	.92	.95	.92	.89	.90	.88	.85	.86	.84	.82	.80
2.0	.89	.82	.76	.87	.81	.75	.83	.77	.73	.79	.74	.71	.75	.72	.68	.66
3.0	.78	.70	.63	.76	.69	.62	.73	.66	.61	.69	.64	.59	.66	.62	.58	.55
4.0	.69	.60	.54	.68	.59	.53	.65	.57	.52	.62	.56	.51	.59	.54	.50	.47
5.0	.62	.53	.46	.60	.52	.46	.58	.50	.45	.55	.49	.44	.53	.48	.43	.41
6.0	.56	.47	.40	.54	.46	.40	.52	.45	.39	.50	.44	.38	.48	.42	.38	.36
7.0	.50	.42	.35	.49	.41	.35	.47	.40	.35	.46	.39	.34	.44	.38	.34	.32
8.0	.46	.37	.32	.45	.37	.31	.43	.36	.31	.42	.35	.30	.40	.34	.30	.28
9.0	.42	.34	.28	.41	.34	.28	.40	.33	.28	.39	.32	.27	.37	.31	.27	.25
10.0	.39	.31	.26	.38	.31	.26	.37	.30	.25	.36	.29	.25	.35	.29	.25	.23



C Range: 0 - 360DEGC Interval: 30.0DEGTest Speed: HIGHTemperature:25.3℃Operators:Test Date:2025-03-04

γ Range: 0 - 180DEGγ Interval: 1.0DEGTest System:EVERFINE GO-2000B_V1 SYSTEM V2.00.488Humidity:65.0%Test Distance:6.360m [K=1.0000]Remarks:

WEC AND CCEC

Test:U:24.00V I:0.4972A P:11.93W PF:1.000 Freq:0Hz Lamp Flux:502.135x1 lm		
NAME: SF15-24V-5050-60-4500K	TYPE:	WEIGHT:
SPEC.:	DIM.: Length=1m	SERIAL No.:
MFR.: OLympia lighting	SUR.:	Shielding Angle:

pcc	80%			70%			50%			30%			10%			0														
pw	50%	30%	10%	50%	30%	10%	50%	30%	10%	50%	30%	10%	50%	30%	10%	0														
pfc	20%			20%			20%			20%			20%			0														
RCR	RCR:Room Cavity Ratio															Wall Exitance Coefficients(WEC)														
0.0																														
1.0	.317	.180	.057	.309	.176	.056	.294	.168	.054	.279	.161	.052	.266	.154	.050															
2.0	.295	.162	.050	.288	.159	.049	.274	.152	.047	.261	.147	.046	.250	.141	.045															
3.0	.272	.145	.043	.265	.142	.043	.253	.137	.042	.242	.132	.041	.231	.128	.040															
4.0	.250	.130	.038	.244	.128	.038	.233	.124	.037	.223	.120	.036	.214	.116	.035															
5.0	.231	.117	.034	.225	.116	.034	.216	.112	.033	.206	.109	.032	.198	.106	.032															
6.0	.213	.107	.031	.209	.105	.030	.200	.103	.030	.192	.100	.029	.184	.097	.029															
7.0	.198	.098	.028	.194	.097	.028	.186	.094	.027	.179	.092	.027	.172	.089	.026															
8.0	.185	.091	.025	.181	.089	.025	.174	.087	.025	.168	.085	.024	.161	.083	.024															
9.0	.174	.084	.023	.170	.083	.023	.164	.081	.023	.158	.079	.023	.152	.077	.022															
10.0	.163	.078	.022	.160	.077	.022	.154	.075	.021	.149	.074	.021	.143	.072	.021															

pcc	80%			70%			50%			30%			10%			0
pw	50%	30%	10%	50%	30%	10%	50%	30%	10%	50%	30%	10%	50%	30%	10%	0
pfc	20%			20%			20%			20%			20%			0
RCR	RCR:Room Cavity Ratio						Ceiling Cavity Exitance Coefficients (CCEC)									
0.0	.220	.220	.220	.188	.188	.188	.128	.128	.128	.074	.074	.074	.024	.024	.024	
1.0	.210	.186	.163	.180	.159	.140	.123	.110	.097	.071	.063	.056	.023	.020	.018	
2.0	.202	.162	.127	.173	.139	.110	.119	.096	.077	.068	.056	.045	.022	.018	.015	
3.0	.195	.144	.104	.167	.124	.090	.115	.086	.063	.066	.050	.037	.021	.016	.012	
4.0	.187	.131	.088	.160	.113	.077	.110	.079	.054	.064	.046	.032	.021	.015	.010	
5.0	.179	.121	.077	.154	.104	.067	.106	.073	.047	.062	.043	.028	.020	.014	.009	
6.0	.172	.112	.069	.148	.097	.060	.102	.068	.043	.059	.040	.025	.019	.013	.008	
7.0	.165	.105	.063	.142	.091	.055	.098	.064	.039	.057	.038	.023	.018	.012	.008	
8.0	.159	.100	.059	.137	.087	.051	.095	.061	.036	.055	.036	.022	.018	.012	.007	
9.0	.153	.095	.056	.132	.082	.048	.091	.058	.034	.053	.034	.021	.017	.011	.007	
10.0	.147	.091	.053	.127	.079	.046	.088	.055	.033	.051	.033	.020	.017	.011	.006	

C Range: 0 - 360DEG
C Interval: 30.0DEG
Test Speed: HIGH
Temperature:25.3℃
Operators:
Test Date:2025-03-04

γ Range: 0 - 180DEG
γ Interval: 1.0DEG
Test System:EVERFINE GO-2000B_V1 SYSTEM V2.00.488
Humidity:65.0%
Test Distance:6.360m [K=1.0000]
Remarks:

UGR(Unified Glare Rating) Table

Test:U:24.00V I:0.4972A P:11.93W PF:1.000 Freq:0Hz Lamp Flux:502.135x1 lm										
NAME: SF15-24V-5050-60-4500K					TYPE:			WEIGHT:		
SPEC.:					DIM.: Length=1m			SERIAL No.:		
MFR.: OLympia lighting					SUR.:			Shielding Angle:		
ceiling/cavity	0.7	0.7	0.5	0.5	0.3	0.7	0.7	0.5	0.5	0.3
walls	0.5	0.3	0.5	0.3	0.3	0.5	0.3	0.5	0.3	0.3
working plane	0.2	0.2	0.2	0.2	0.2	0.2	0.2	0.2	0.2	0.2
Room dimensions	Viewed crosswise					Viewed endwise				
x = 2H y = 2H	22.4	23.8	22.7	24.1	24.4	22.4	23.9	22.7	24.1	24.4
3H	23.9	25.3	24.3	25.6	25.9	24.0	25.3	24.3	25.6	26.0
4H	24.6	25.9	25.0	26.2	26.5	24.7	26.0	25.0	26.3	26.6
6H	25.1	26.3	25.5	26.7	27.0	25.2	26.5	25.6	26.8	27.2
8H	25.3	26.5	25.7	26.8	27.2	25.4	26.6	25.8	27.0	27.3
12H	25.4	26.5	25.8	26.9	27.3	25.6	26.7	26.0	27.1	27.5
4H 2H	23.0	24.3	23.3	24.6	24.9	23.0	24.3	23.4	24.6	24.9
3H	24.7	25.9	25.1	26.2	26.6	24.8	25.9	25.2	26.3	26.7
4H	25.5	26.6	26.0	27.0	27.4	25.6	26.6	26.0	27.0	27.4
6H	26.2	27.1	26.6	27.5	28.0	26.3	27.2	26.8	27.6	28.1
8H	26.4	27.3	26.9	27.7	28.2	26.6	27.4	27.1	27.9	28.3
12H	26.6	27.4	27.1	27.8	28.3	26.8	27.6	27.3	28.0	28.5
8H 4H	25.8	26.7	26.3	27.1	27.6	25.9	26.7	26.4	27.2	27.7
6H	26.6	27.4	27.1	27.8	28.3	26.8	27.5	27.3	27.9	28.5
8H	27.0	27.6	27.5	28.1	28.6	27.1	27.8	27.7	28.3	28.8
12H	27.3	27.8	27.8	28.3	28.9	27.5	28.0	28.0	28.5	29.1
12H 4H	25.8	26.6	26.3	27.1	27.6	25.9	26.7	26.4	27.2	27.6
6H	26.7	27.4	27.2	27.8	28.4	26.8	27.5	27.4	28.0	28.5
8H	27.1	27.7	27.6	28.2	28.7	27.3	27.8	27.8	28.3	28.9
Variations with the observer position at spacings(CIE Pub.117):										
S = 1.0H	+ 0.1 / - 0.2					+ 0.1 / - 0.2				
1.5H	+ 0.2 / - 0.3					+ 0.2 / - 0.3				
2.0H	+ 0.1 / - 0.3					+ 0.1 / - 0.3				

CIE Pub.117, 502.1 lm Total Lamp Luminous Flux Correct (8log(F/F0) = -2.4)
Area: 0.0115 m2

C Range: 0 - 360DEG
C Interval: 30.0DEG
Test Speed: HIGH
Temperature:25.3℃
Operators:
Test Date:2025-03-04

γ Range: 0 - 180DEG
γ Interval: 1.0DEG
Test System:EVERFINE GO-2000B_V1 SYSTEM V2.00.488
Humidity:65.0%
Test Distance:6.360m [K=1.0000]
Remarks:

UTILIZATION FACTORS TABLE

Test:U:24.00V I:0.4972A P:11.93W PF:1.000 Freq:0Hz Lamp Flux:502.135x1 lm		
NAME: SF15-24V-5050-60-4500K	TYPE:	WEIGHT:
SPEC.:	DIM.: Length=1m	SERIAL No.:
MFR.: OLympia lighting	SUR.:	Shielding Angle:

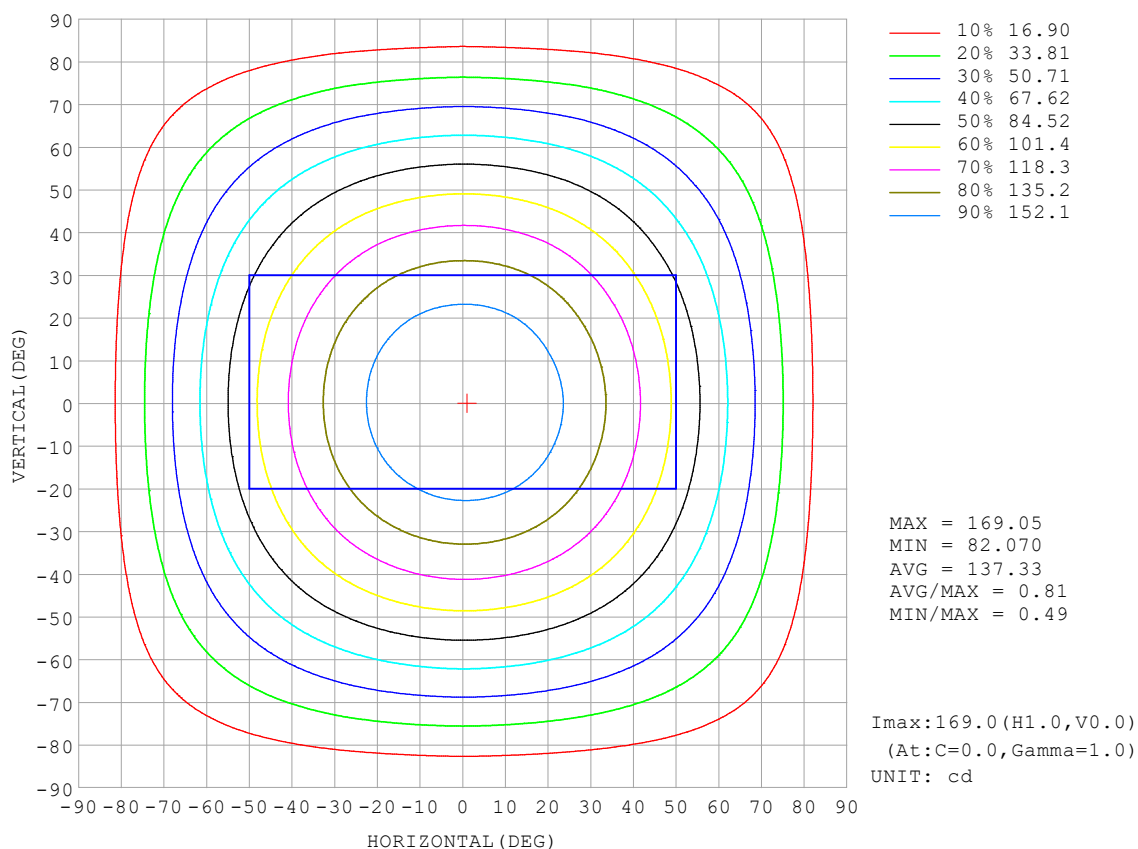
REFLECTANCE										
Ceiling	0.8	0.8	0.8	0.7	0.7	0.7	0.5	0.5	0.5	0
Walls	0.7	0.5	0.3	0.7	0.5	0.3	0.7	0.5	0.3	0
Working plane	0.2	0.2	0.2	0.2	0.2	0.2	0.2	0.2	0.2	0
ROOM INDEX	UTILIZATION FACTORS (PERCENT) $k(RI) \times RCR = 5$									
$k = 0.60$	56	45	38	55	44	37	54	44	37	31
0.80	66	54	47	65	54	47	63	53	46	39
1.00	74	63	56	73	62	55	70	63	54	47
1.25	81	71	63	80	70	63	77	68	62	54
1.50	86	76	69	84	75	68	81	73	67	59
2.00	93	84	78	91	83	77	87	80	75	66
2.50	97	89	83	95	88	82	90	84	80	70
3.00	101	93	88	98	92	86	93	88	84	74
4.00	105	99	94	102	97	92	97	93	89	79
5.00	107	102	98	104	100	96	99	96	92	82
ROOM INDEX	UF (total)									Direct
According to DIN EN 13032-2 2004			Suspended					SHRNOM = 1.25		

C Range: 0 - 360DEG
 C Interval: 30.0DEG
 Test Speed: HIGH
 Temperature: 25.3 °C
 Operators:
 Test Date: 2025-03-04

γ Range: 0 - 180DEG
 γ Interval: 1.0DEG
 Test System: EVERFINE GO-2000B_V1 SYSTEM V2.00.488
 Humidity: 65.0%
 Test Distance: 6.360m [K=1.0000]
 Remarks:

ISOCANDELA DIAGRAM

Test:U:24.00V I:0.4972A P:11.93W PF:1.000 Freq:0Hz Lamp Flux:502.135x1 lm		
NAME: SF15-24V-5050-60-4500K	TYPE:	WEIGHT:
SPEC.:	DIM.: Length=1m	SERIAL No.:
MFR.: OLympia lighting	SUR.:	Shielding Angle:

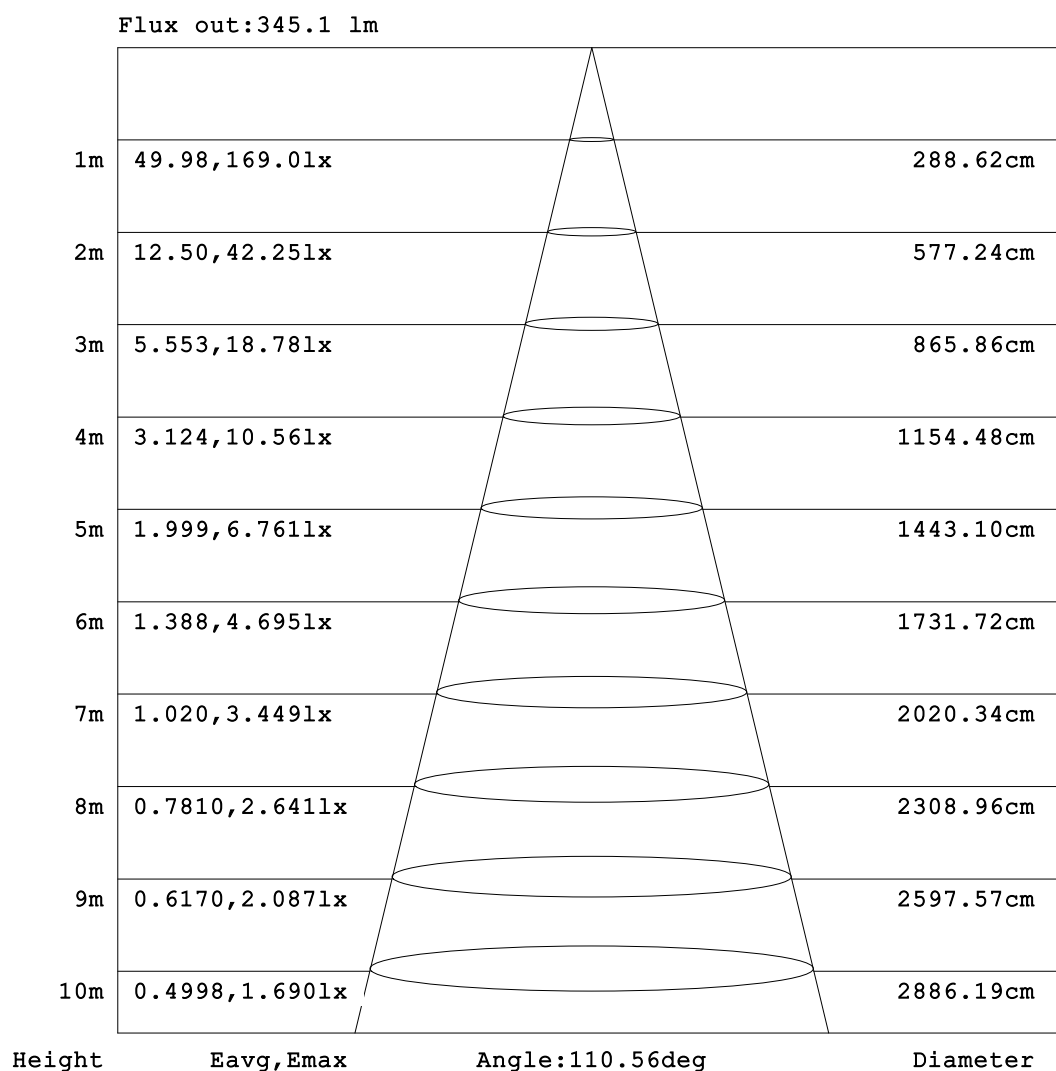


C Range: 0 - 360DEG
C Interval: 30.0DEG
Test Speed: HIGH
Temperature:25.3℃
Operators:
Test Date:2025-03-04

γ Range: 0 - 180DEG
γ Interval: 1.0DEG
Test System:EVERFINE GO-2000B_V1 SYSTEM V2.00.488
Humidity:65.0%
Test Distance:6.360m [K=1.0000]
Remarks:

AAI Figure

Test:U:24.00V I:0.4972A P:11.93W PF:1.000 Freq:0Hz Lamp Flux:502.135x1 lm		
NAME: SF15-24V-5050-60-4500K	TYPE:	WEIGHT:
SPEC.:	DIM.: Length=1m	SERIAL No.:
MFR.: OLympia lighting	SUR.:	Shielding Angle:



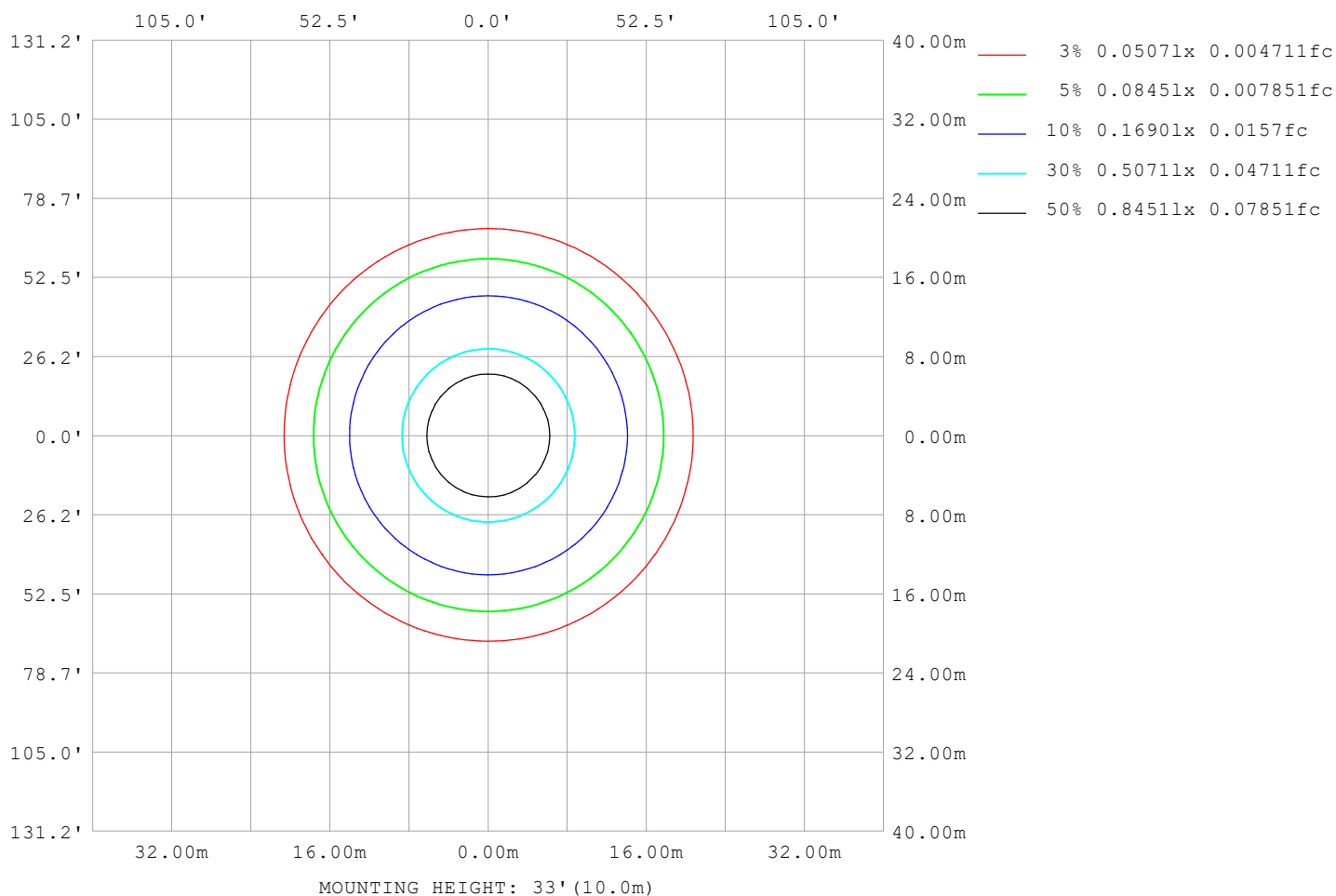
Note: The Curves indicate the illuminated area and the average illumination when the luminaire is at different distance.

C Range: 0 - 360DEG
C Interval: 30.0DEG
Test Speed: HIGH
Temperature: 25.3℃
Operators:
Test Date: 2025-03-04

γ Range: 0 - 180DEG
γ Interval: 1.0DEG
Test System: EVERFINE GO-2000B_V1 SYSTEM V2.00.488
Humidity: 65.0%
Test Distance: 6.360m [K=1.0000]
Remarks:

ISOLUX DIAGRAM

Test:U:24.00V I:0.4972A P:11.93W PF:1.000 Freq:0Hz Lamp Flux:502.135x1 lm		
NAME: SF15-24V-5050-60-4500K	TYPE:	WEIGHT:
SPEC.:	DIM.: Length=1m	SERIAL No.:
MFR.: OLympia lighting	SUR.:	Shielding Angle:



C Range: 0 - 360DEG
C Interval: 30.0DEG
Test Speed: HIGH
Temperature: 25.3°C
Operators:
Test Date: 2025-03-04

γ Range: 0 - 180DEG
γ Interval: 1.0DEG
Test System: EVERFINE GO-2000B_V1 SYSTEM V2.00.488
Humidity: 65.0%
Test Distance: 6.360m [K=1.0000]
Remarks:

LED Avg.L Report

Test:U:24.00V I:0.4972A P:11.93W PF:1.000 Freq:0Hz Lamp Flux:502.135x1 lm		
NAME: SF15-24V-5050-60-4500K	TYPE:	WEIGHT:
SPEC.:	DIM.: Length=1m	SERIAL No.:
MFR.: OLympia lighting	SUR.:	Shielding Angle:

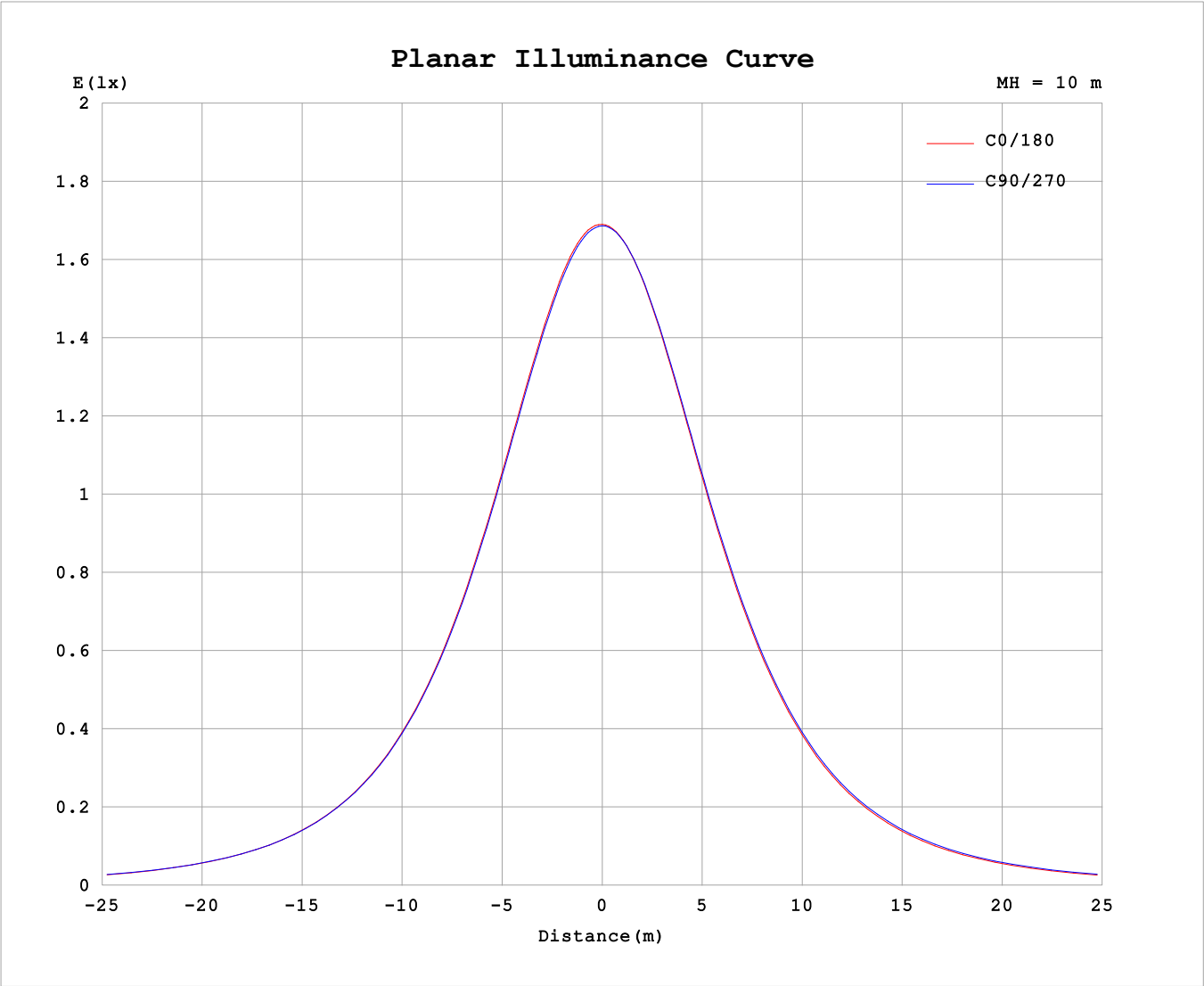
AvgL	cd/m2
L_0~180 (65) av	12180
L_0~180 (75) av	11175
L_0~180 (85) av	9512
L_90~270 (65) av	12608
L_90~270 (75) av	12177
L_90~270 (85) av	12669
L_45 (65) av	12376
L_45 (75) av	11661
L_45 (85) av	10773

Standard: GB/T 29293-2012

C Range: 0 - 360DEG
C Interval: 30.0DEG
Test Speed: HIGH
Temperature:25.3℃
Operators:
Test Date:2025-03-04

γ Range: 0 - 180DEG
γ Interval: 1.0DEG
Test System:EVERFINE GO-2000B_V1 SYSTEM V2.00.488
Humidity:65.0%
Test Distance:6.360m [K=1.0000]
Remarks:

Planar Illuminance Curve



C Range: 0 - 360DEG	γ Range: 0 - 180DEG
C Interval: 30.0DEG	γ Interval: 1.0DEG
Test Speed: HIGH	Test System:EVERFINE GO-2000B_V1 SYSTEM V2.00.488
Temperature:25.3℃	Humidity:65.0%
Operators:	Test Distance:6.360m [K=1.0000]
Test Date:2025-03-04	Remarks:

LUMINOUS DISTRIBUTION INTENSITY DATA

Test:U:24.00V I:0.4972A P:11.93W PF:1.000 Freq:0Hz Lamp Flux:502.135x1 lm																	
NAME: SF15-24V-5050-60-4500K									TYPE:						WEIGHT:		
SPEC.:									DIM.: Length=1m						SERIAL No.:		
MFR.: OLYMPIA lighting									SUR.:						Shielding Angle:		

Table--1

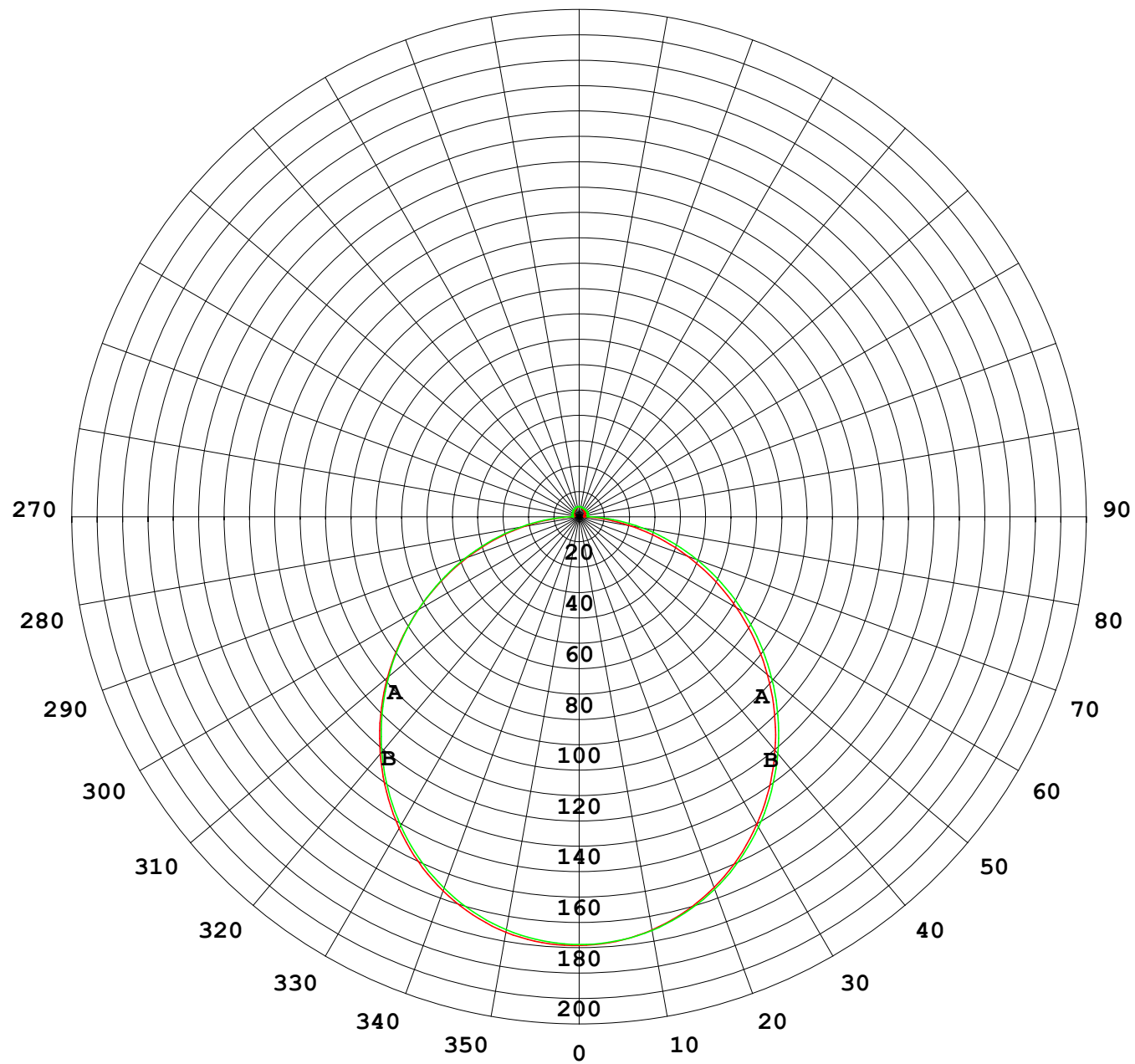
UNIT: cd

C (DEG) γ (DEG)	0	30	60	90	120	150	180	210	240	270	300	330						
0	169	169	169	169	169	169	169	169	169	169	169	169						
5	168	168	168	168	168	168	168	168	168	168	168	168						
10	166	166	166	165	165	165	165	165	166	166	166	166						
15	162	162	162	161	161	161	161	161	162	162	162	162						
20	157	157	156	156	156	156	155	156	156	156	157	157						
25	150	150	149	149	149	149	148	149	149	150	150	150						
30	142	141	141	141	140	140	140	141	141	141	142	141						
35	132	132	132	131	131	131	130	131	132	132	133	132						
40	122	121	121	121	121	120	120	121	122	122	122	122						
45	111	110	110	110	109	109	109	109	110	111	111	110						
50	98.5	98.2	98.3	98.1	97.6	97.1	96.8	97.6	98.7	99.2	99.3	98.4						
55	85.9	85.6	85.8	85.8	85.2	84.6	84.3	85.2	86.4	87.1	87.0	85.8						
60	73.0	72.7	73.1	73.3	72.6	71.9	71.5	72.4	73.9	74.6	74.4	73.0						
65	59.9	59.6	60.2	60.5	59.9	58.9	58.5	59.5	61.3	62.1	61.7	60.0						
70	46.8	46.6	47.3	47.8	47.2	46.0	45.4	46.7	48.7	49.5	49.0	47.1						
75	34.0	34.0	34.7	35.3	34.7	33.3	32.5	33.9	36.3	37.2	36.4	34.5						
80	21.7	21.7	22.5	23.2	22.4	20.9	20.2	21.5	24.1	25.2	24.3	22.4						
85	10.3	10.3	10.8	11.7	10.5	9.37	8.81	9.81	12.2	13.7	12.7	10.9						
90	3.30	3.08	2.68	2.50	2.61	2.57	2.42	2.76	3.32	3.48	3.74	3.28						
95	1.98	2.09	2.30	2.63	2.57	2.27	1.89	2.27	3.08	3.34	3.10	2.26						
100	2.09	2.21	2.38	2.76	2.70	2.40	1.96	2.38	3.19	3.44	3.23	2.35						
105	2.24	2.35	2.50	2.84	2.83	2.55	2.09	2.51	3.28	3.52	3.33	2.48						
110	2.41	2.48	2.61	2.92	2.95	2.70	2.23	2.63	3.36	3.57	3.42	2.61						
115	2.56	2.60	2.75	2.99	3.05	2.84	2.37	2.75	3.41	3.62	3.46	2.73						
120	2.71	2.71	2.89	3.07	3.15	2.98	2.51	2.85	3.45	3.64	3.49	2.85						
125	2.84	2.83	3.00	3.16	3.25	3.11	2.64	2.96	3.48	3.66	3.52	2.93						
130	2.96	2.94	3.11	3.29	3.35	3.22	2.78	3.05	3.51	3.68	3.55	3.01						
135	3.07	3.03	3.22	3.41	3.44	3.33	2.92	3.15	3.55	3.69	3.56	3.09						
140	3.17	3.13	3.35	3.51	3.54	3.44	3.05	3.25	3.59	3.70	3.58	3.18						
145	3.27	3.28	3.47	3.63	3.63	3.54	3.20	3.35	3.64	3.71	3.60	3.26						
150	3.41	3.46	3.59	3.73	3.73	3.66	3.35	3.45	3.70	3.76	3.63	3.35						
155	3.57	3.61	3.71	3.83	3.82	3.77	3.50	3.56	3.76	3.79	3.71	3.45						
160	3.72	3.74	3.81	3.92	3.90	3.88	3.64	3.67	3.82	3.83	3.76	3.56						
165	3.83	3.84	3.90	4.00	3.97	3.97	3.78	3.78	3.89	3.88	3.83	3.67						
170	3.88	3.95	3.97	4.06	4.04	4.04	3.88	3.89	3.95	3.95	3.93	3.86						
175	3.94	4.01	4.04	4.10	4.08	4.06	3.95	3.97	4.04	4.03	4.02	3.96						
180	3.98	4.03	4.07	4.10	4.08	4.06	3.99	4.03	4.07	4.10	4.10	4.05						

C Range: 0 - 360DEG
C Interval: 30.0DEG
Test Speed: HIGH
Temperature:25.3℃
Operators:
Test Date:2025-03-04

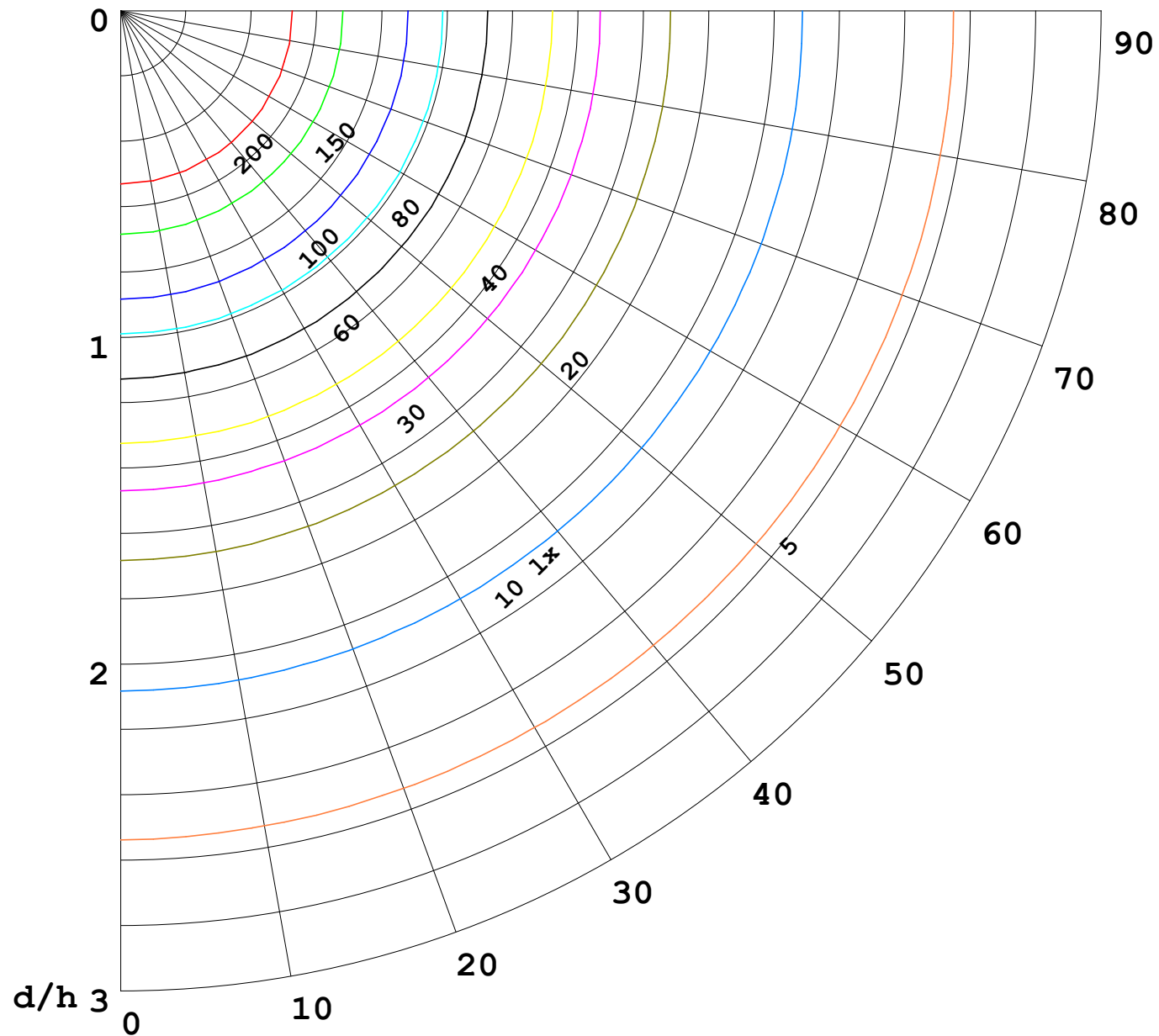
γ Range: 0 - 180DEG
γ Interval: 1.0DEG
Test System:EVERFINE GO-2000B_V1 SYSTEM V2.00.488
Humidity:65.0%
Test Distance:6.360m [K=1.0000]
Remarks:

I (cd)



1000 lm

$\kappa = 1$



F = 1000 lm
 K = 0.7
 Hcc = 0.8 m
 Hfc = 0.0 m
 Eave = 100 lx

	Pcc	Pw	Pfc
————	70	50	30
————	50	30	20

