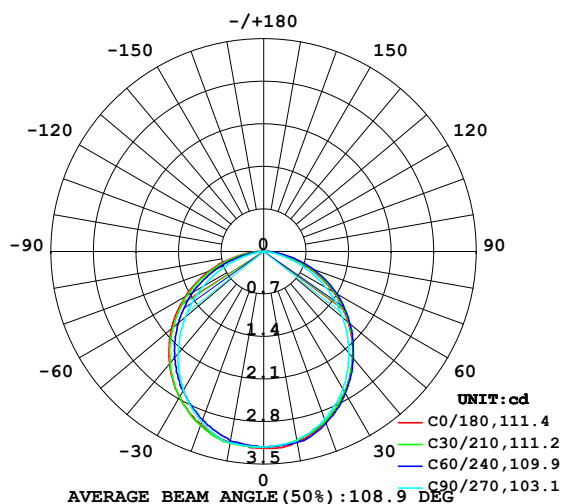


## LUMINAIRE PHOTOMETRIC TEST REPORT

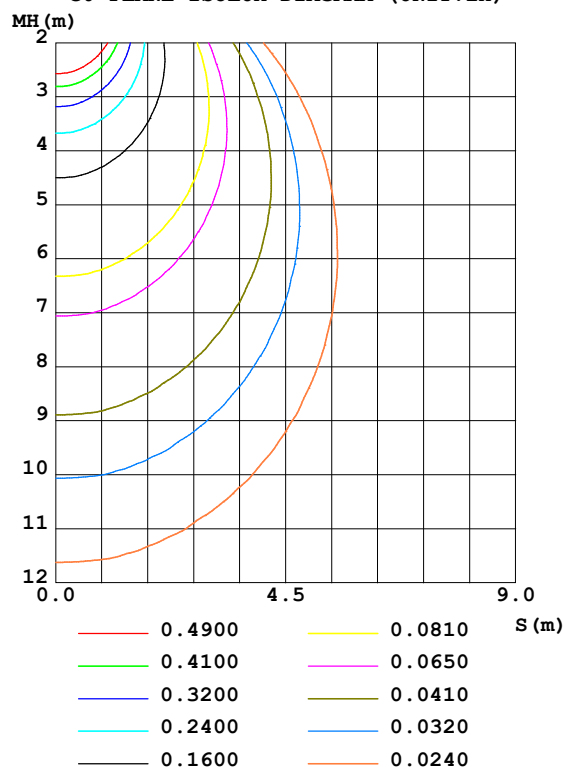
Test:U:12.00V I:0.4205A P:5.046W PF:1.000 Freq:50.00Hz Lamp Flux:8.89524x1 lm					
NAME: SF15-12V-3528-72-B			TYPE: 硅胶		WEIGHT:
SPEC.:			DIM.: 21mm*11.5mm		SERIAL No.:2021122211
MFR.: OLYMPIA			SUR.:1*0.0115		Shielding Angle:

DATA OF LAMP		PHOTOMETRIC DATA				Eff: 1.76 lm/W
MODEL	3528	I <sub>max</sub> (cd)	3.242	S/MH (C0/180)	1.27	
NOMINAL POWER (W)	5	LOR (%)	100.0	S/MH (C90/270)	1.22	
RATED VOLTAGE (V)	12	TOTAL FLUX (lm)	8.8952	η UP, DN (C0-180)	0.0, 49.0	
NOMINAL FLUX (lm)	8.89524	CIE CLASS	DIRECT	η UP, DN (C180-360)	0.0, 50.9	
LAMPS INSIDE	1	η up (%)	0.1	CIBSE SHR NOM	1.25	
TEST VOLTAGE (V)	12	η down (%)	99.9	CIBSE SHR MAX	1.35	

LUMINOUS INTENSITY DISTRIBUTION DIAGRAM



C0 PLANE ISOLUX DIAGRAM (UNIT:lx)



C Range: 0 - 360DEG  
 C Interval: 30.0DEG  
 Test Speed: HIGH  
 Temperature: 25.3DEG  
 Operators: LPC  
 Test Date: 2021-12-22

γ Range: 0 - 120DEG  
 γ Interval: 1.0DEG  
 Test System: EVERFINE GO-2000B\_V1 SYSTEM V2.0.362  
 Humidity: 65.0%  
 Test Distance: 9.200m [K=1.0000]  
 Remarks:

## ZONAL FLUX DIAGRAM

## ZONAL FLUX DIAGRAM:

$\gamma$	C0	C45	C90	C135	C180	C225	C270	C315	$\gamma$	$\Phi$ zone	$\Phi$ total	%lum, lamp
10	3.186	3.170	3.161	3.161	3.186	3.184	3.195	3.204	0- 10	0.3055	0.3055	3.43,3.43
20	2.980	2.988	2.935	2.963	3.025	2.995	2.986	3.008	10- 20	0.8745	1.180	13.3,13.3
30	2.664	2.681	2.613	2.661	2.774	2.709	2.644	2.696	20- 30	1.312	2.491	28,28
40	2.277	2.287	2.186	2.287	2.412	2.344	2.192	2.327	30- 40	1.562	4.054	45.6,45.6
50	1.815	1.842	1.693	1.829	1.980	1.892	1.684	1.902	40- 50	1.600	5.654	63.6,63.6
60	1.322	1.364	1.175	1.337	1.497	1.405	1.146	1.432	50- 60	1.431	7.085	79.6,79.6
70	0.7796	0.8468	0.6378	0.7966	0.9644	0.8618	0.6136	0.9096	60- 70	1.075	8.159	91.7,91.7
80	0.2919	0.3318	0.1454	0.2865	0.4367	0.3342	0.1311	0.3919	70- 80	0.5881	8.747	98.3,98.3
90	0.0303	0.0152	0	0.0101	0.0402	0.0227	0	0.0353	80- 90	0.1430	8.890	99.9,99.9
100	0	0	0	0.0025	0	0	0	0	90-100	0.0046	8.895	100,100
110	0	0	0	0	0	0	0	0	100-110	0.0002	8.895	100,100
120	0	0	0	0	0	0	0	0	110-120	0	8.895	100,100
130	0	0	0	0	0	0	0	0	120-130	0	8.895	100,100
140	0	0	0	0	0	0	0	0	130-140	0	8.895	100,100
150	0	0	0	0	0	0	0	0	140-150	0	8.895	100,100
160	0	0	0	0	0	0	0	0	150-160	0	8.895	100,100
170	0	0	0	0	0	0	0	0	160-170	0	8.895	100,100
180	0	0	0	0	0	0	0	0	170-180	0	8.895	100,100
DEG	LUMINOUS INTENSITY:cd									UNIT:lm		

Conical surface Flux(90deg): 4.8626 lm

%lum = 54.7%

%lamp = 54.7%

Conical surface Flux(120deg): 7.0845 lm

%lum = 79.6%

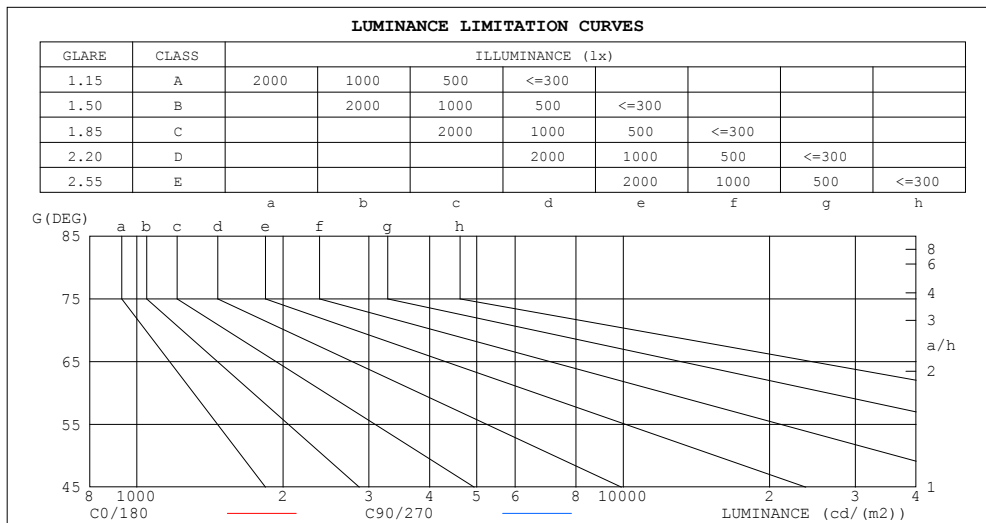
%lamp = 79.6%

C Range: 0 - 360DEG  
 C Interval: 30.0DEG  
 Test Speed: HIGH  
 Temperature:25.3DEG  
 Operators:LPC  
 Test Date:2021-12-22

$\gamma$  Range: 0 - 120DEG  
 $\gamma$  Interval: 1.0DEG  
 Test System:EVERFINE GO-2000B\_V1 SYSTEM V2.0.362  
 Humidity:65.0%  
 Test Distance:9.200m [K=1.0000]  
 Remarks:

## LUMINANCE LIMITATION CURVES

Test:U:12.00V I:0.4205A P:5.046W PF:1.000 Freq:50.00Hz Lamp Flux:8.89524x1 lm		
NAME: SF15-12V-3528-72-B	TYPE: 硅胶	WEIGHT:
SPEC.:	DIM.: 21mm*11.5mm	SERIAL No.:2021122211
MFR.: OLYMPIA	SUR.:1*0.0115	Shielding Angle:



LUMINANCE cd/(m2)		
G (DEG)	C0/180	C90/270
85	121	0
80	146	73
75	177	130
70	198	162
65	217	187
60	230	204
55	239	219
50	246	229
45	253	239

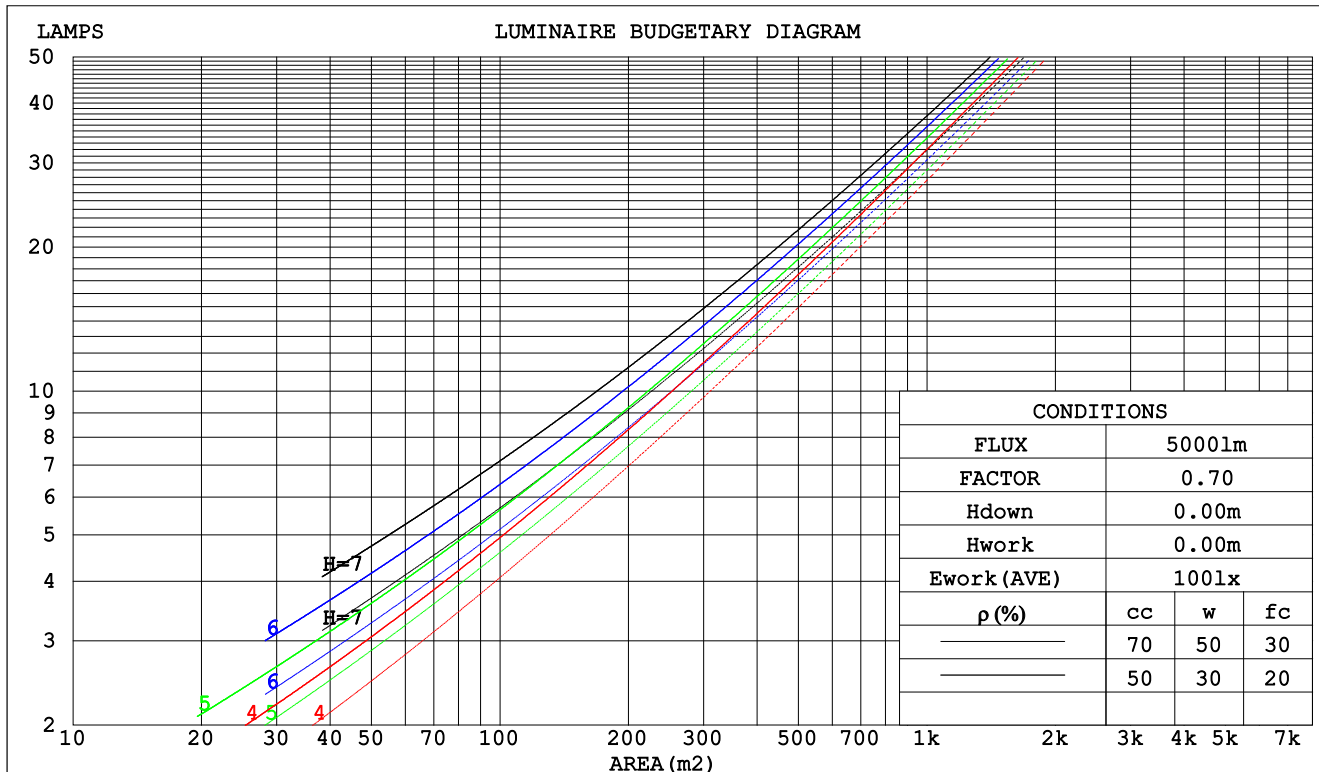
C Range: 0 - 360DEG  
C Interval: 30.0DEG  
Test Speed: HIGH  
Temperature:25.3DEG  
Operators:LPC  
Test Date:2021-12-22

$\gamma$  Range: 0 - 120DEG  
 $\gamma$  Interval: 1.0DEG  
Test System:EVERFINE GO-2000B\_V1 SYSTEM V2.0.362  
Humidity:65.0%  
Test Distance:9.200m [K=1.0000]  
Remarks:

## CU AND LUMINAIRE BUDGETARY ESTIMATE DIAGRAM

Test:U:12.00V I:0.4205A P:5.046W PF:1.000 Freq:50.00Hz Lamp Flux:8.89524x1 lm		
NAME: SF15-12V-3528-72-B	TYPE:硅胶	WEIGHT:
SPEC.:	DIM.: 21mm*11.5mm	SERIAL No.:2021122211
MFR.: OLYMPIA	SUR.:1*0.0115	Shielding Angle:

pcc	80%			70%			50%			30%			10%			0
pw	50%	30%	10%	50%	30%	10%	50%	30%	10%	50%	30%	10%	50%	30%	10%	0
pfc	20%			20%			20%			20%			20%			0
RCR	RCR:Room Cavity Ratio			Coefficients of Utilization(CU)												
0.0	1.19	1.19	1.19	1.16	1.16	1.16	1.11	1.11	1.11	1.06	1.06	1.06	1.02	1.02	1.02	.00
1.0	1.04	.00	.96	1.02	.98	.95	.98	.94	.92	.94	.91	.89	.90	.88	.86	.84
2.0	.91	.84	.78	.89	.83	.77	.85	.80	.76	.82	.78	.74	.79	.75	.72	.70
3.0	.80	.72	.65	.78	.71	.65	.75	.69	.63	.73	.67	.62	.70	.65	.61	.59
4.0	.71	.62	.55	.69	.61	.55	.67	.60	.54	.65	.58	.53	.62	.57	.53	.51
5.0	.63	.54	.48	.62	.54	.47	.60	.53	.47	.58	.51	.46	.56	.50	.46	.44
6.0	.57	.48	.42	.56	.48	.41	.54	.47	.41	.53	.46	.41	.51	.45	.40	.38
7.0	.52	.43	.37	.51	.43	.37	.49	.42	.36	.48	.41	.36	.46	.40	.36	.34
8.0	.47	.39	.33	.46	.38	.33	.45	.38	.33	.44	.37	.32	.43	.37	.32	.30
9.0	.43	.35	.30	.43	.35	.29	.42	.34	.29	.40	.34	.29	.39	.33	.29	.27
10.0	.40	.32	.27	.39	.32	.27	.38	.31	.27	.37	.31	.26	.37	.31	.26	.25



C Range: 0 - 360DEG  
 C Interval: 30.0DEG  
 Test Speed: HIGH  
 Temperature:25.3DEG  
 Operators:LPC  
 Test Date:2021-12-22

γ Range: 0 - 120DEG  
 γ Interval: 1.0DEG  
 Test System:EVERFINE GO-2000B\_V1 SYSTEM V2.0.362  
 Humidity:65.0%  
 Test Distance:9.200m [K=1.0000]  
 Remarks:

## WEC AND CCEC

Test:U:12.00V I:0.4205A P:5.046W PF:1.000 Freq:50.00Hz Lamp Flux:8.89524x1 lm		
NAME: SF15-12V-3528-72-B	TYPE: 硅胶	WEIGHT:
SPEC.:	DIM.: 21mm*11.5mm	SERIAL No.:2021122211
MFR.: OLYMPIA	SUR.:1*0.0115	Shielding Angle:

pcc	80%			70%			50%			30%			10%			0	
pw	50%	30%	10%	50%	30%	10%	50%	30%	10%	50%	30%	10%	50%	30%	10%	0	
pfc	20%			20%			20%			20%			20%			0	
RCR	RCR:Room Cavity Ratio						Wall Exitance Coeffcients(WEC)										
0.0																	
1.0	.304	.173	.055	.297	.169	.054	.283	.163	.052	.271	.156	.050	.260	.151	.049		
2.0	.287	.158	.048	.281	.155	.048	.269	.150	.047	.259	.145	.045	.249	.141	.044		
3.0	.267	.142	.043	.261	.140	.042	.251	.136	.041	.241	.132	.041	.232	.129	.040		
4.0	.247	.128	.038	.242	.127	.037	.233	.123	.037	.224	.120	.036	.216	.117	.036		
5.0	.228	.116	.034	.224	.115	.033	.216	.112	.033	.208	.110	.033	.201	.108	.032		
6.0	.212	.106	.030	.208	.105	.030	.201	.103	.030	.194	.101	.030	.188	.099	.029		
7.0	.197	.098	.028	.194	.097	.028	.188	.095	.027	.181	.093	.027	.176	.091	.027		
8.0	.185	.090	.025	.181	.089	.025	.176	.088	.025	.170	.086	.025	.165	.085	.025		
9.0	.173	.084	.023	.170	.083	.023	.165	.082	.023	.160	.080	.023	.156	.079	.023		
10.0	.163	.078	.022	.160	.077	.022	.156	.076	.021	.151	.075	.021	.147	.074	.021		

pcc	80%			70%			50%			30%			10%			0	
pw	50%	30%	10%	50%	30%	10%	50%	30%	10%	50%	30%	10%	50%	30%	10%	0	
pfc	20%			20%			20%			20%			20%			0	
RCR	RCR:Room Cavity Ratio						Ceiling Cavity Exitance Coefficients(CCEC)										
0.0	.191	.191	.191	.163	.163	.163	.111	.111	.111	.064	.064	.064	.020	.020	.020		
1.0	.180	.157	.135	.154	.134	.116	.106	.092	.081	.061	.054	.047	.019	.017	.015		
2.0	.172	.132	.099	.147	.114	.086	.101	.079	.060	.058	.046	.035	.019	.015	.011		
3.0	.164	.115	.075	.141	.099	.065	.097	.069	.046	.056	.040	.027	.018	.013	.009		
4.0	.157	.101	.059	.134	.088	.051	.092	.061	.036	.053	.036	.021	.017	.012	.007		
5.0	.149	.091	.048	.128	.079	.042	.088	.055	.029	.051	.032	.017	.016	.011	.006		
6.0	.142	.083	.040	.122	.071	.035	.084	.050	.025	.049	.029	.015	.016	.010	.005		
7.0	.135	.076	.034	.116	.066	.029	.080	.046	.021	.047	.027	.012	.015	.009	.004		
8.0	.129	.070	.029	.111	.061	.026	.077	.043	.018	.045	.025	.011	.014	.008	.004		
9.0	.123	.065	.026	.106	.056	.022	.073	.040	.016	.043	.023	.010	.014	.008	.003		
10.0	.117	.061	.023	.101	.053	.020	.070	.037	.014	.041	.022	.008	.013	.007	.003		

C Range: 0 - 360DEG  
 C Interval: 30.0DEG  
 Test Speed: HIGH  
 Temperature:25.3DEG  
 Operators:LPC  
 Test Date:2021-12-22

γ Range: 0 - 120DEG  
 γ Interval: 1.0DEG  
 Test System:EVERFINE GO-2000B\_V1 SYSTEM V2.0.362  
 Humidity:65.0%  
 Test Distance:9.200m [K=1.0000]  
 Remarks:

UGR(Unified Glare Rating) Table

Test:U:12.00V I:0.4205A P:5.046W PF:1.000 Freq:50.00Hz Lamp Flux:8.89524x1 lm											
NAME: SF15-12V-3528-72-B						TYPE:硅胶		WEIGHT:			
SPEC.:						DIM.: 21mm*11.5mm		SERIAL No.:2021122211			
MFR.: OLYMPIA						SUR.:1*0.0115		Shielding Angle:			
ceiling/cavity	0.7	0.7	0.5	0.5	0.3	0.7	0.7	0.5	0.5	0.3	
walls	0.5	0.3	0.5	0.3	0.3	0.5	0.3	0.5	0.3	0.3	
working plane	0.2	0.2	0.2	0.2	0.2	0.2	0.2	0.2	0.2	0.2	
Room dimensions		Viewed crosswise					Viewed endwise				
x = 2H y = 2H	24.3	25.8	24.5	26.0	26.2	24.1	25.6	24.4	25.8	26.0	
	3H	25.7	27.1	26.0	27.3	27.5	25.4	26.8	25.7	27.0	27.2
	4H	26.2	27.5	26.5	27.8	28.0	25.8	27.1	26.1	27.3	27.6
	6H	26.5	27.8	26.8	28.0	28.3	25.9	27.2	26.3	27.4	27.7
	8H	26.6	27.8	26.9	28.1	28.4	25.9	27.1	26.2	27.4	27.7
	12H	26.6	27.8	27.0	28.1	28.4	25.9	27.0	26.2	27.3	27.6
4H	2H	24.9	26.2	25.2	26.5	26.7	24.8	26.1	25.1	26.4	26.6
	3H	26.5	27.6	26.8	27.9	28.2	26.3	27.5	26.7	27.8	28.1
	4H	27.1	28.2	27.5	28.5	28.8	26.9	27.9	27.3	28.3	28.6
	6H	27.5	28.5	27.9	28.8	29.2	27.2	28.1	27.6	28.5	28.8
	8H	27.7	28.5	28.1	28.9	29.3	27.2	28.1	27.6	28.4	28.8
	12H	27.7	28.5	28.2	28.9	29.3	27.2	28.0	27.6	28.4	28.8
8H	4H	27.4	28.3	27.8	28.6	29.0	27.2	28.1	27.6	28.4	28.8
	6H	27.9	28.7	28.4	29.1	29.5	27.7	28.4	28.1	28.8	29.3
	8H	28.1	28.8	28.6	29.2	29.6	27.8	28.4	28.3	28.9	29.3
	12H	28.3	28.8	28.7	29.3	29.7	27.8	28.4	28.3	28.8	29.3
12H	4H	27.4	28.2	27.8	28.6	29.0	27.2	28.0	27.6	28.4	28.8
	6H	28.0	28.7	28.5	29.1	29.5	27.8	28.4	28.2	28.8	29.3
	8H	28.2	28.8	28.7	29.2	29.7	27.9	28.5	28.4	28.9	29.4
Variations with the observer position at spacings:											
S = 1.0H	+ 0.2 / - 0.2					+ 0.2 / - 0.3					
1.5H	+ 0.2 / - 0.3					+ 0.3 / - 0.4					
2.0H	+ 0.2 / - 0.3					+ 0.2 / - 0.6					

CIE Pub.117, 8.895 lm Total Lamp Luminous Flux Correct (8log(F/F0) = -16.4)

C Range: 0 - 360DEG  
C Interval: 30.0DEG  
Test Speed: HIGH  
Temperature:25.3DEG  
Operators:LPC  
Test Date:2021-12-22

γ Range: 0 - 120DEG  
γ Interval: 1.0DEG  
Test System:EVERFINE GO-2000B\_V1 SYSTEM V2.0.362  
Humidity:65.0%  
Test Distance:9.200m [K=1.0000]  
Remarks:

## UTILIZATION FACTORS TABLE

Test:U:12.00V I:0.4205A P:5.046W PF:1.000 Freq:50.00Hz Lamp Flux:8.89524x1 lm		
NAME: SF15-12V-3528-72-B	TYPE: 硅胶	WEIGHT:
SPEC.:	DIM.: 21mm*11.5mm	SERIAL No.:2021122211
MFR.: OLYMPIA	SUR.:1*0.0115	Shielding Angle:

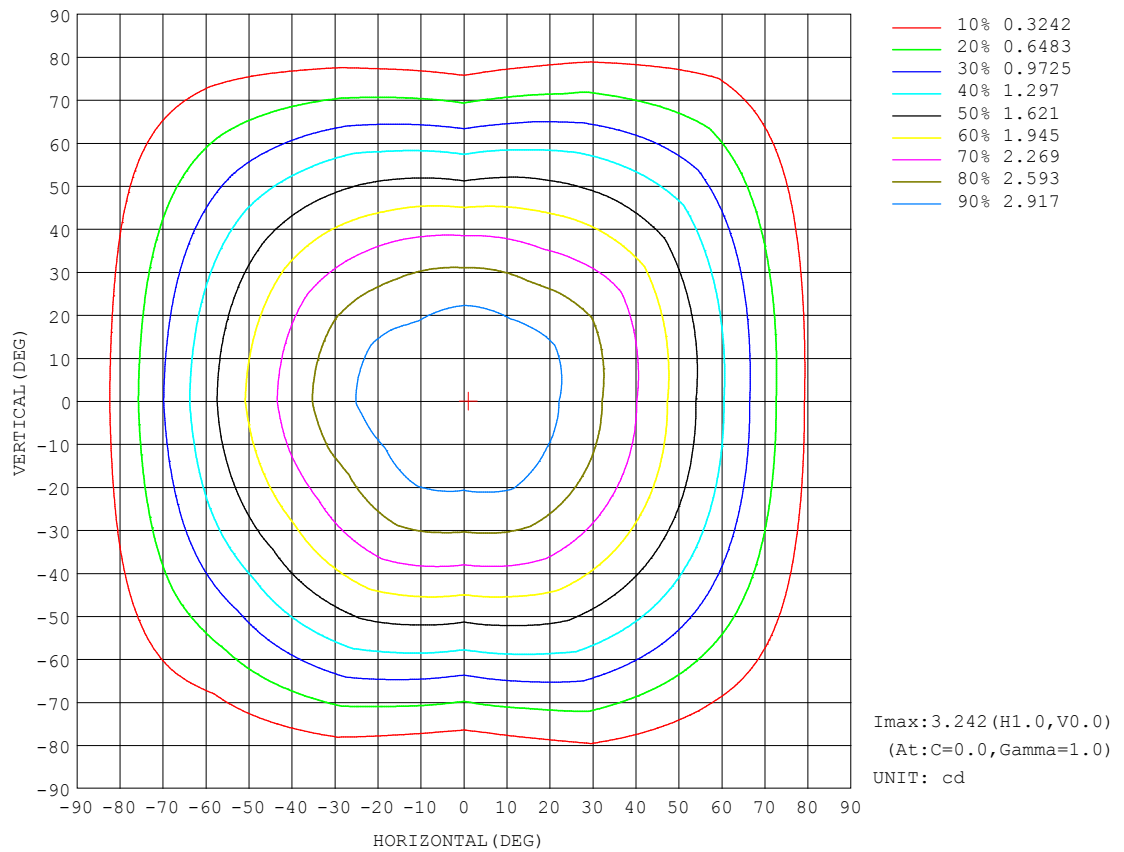
REFLECTANCE										
Ceiling	0.8	0.8	0.8	0.7	0.7	0.7	0.5	0.5	0.5	0
Walls	0.7	0.5	0.3	0.7	0.5	0.3	0.7	0.5	0.3	0
Working plane	0.2	0.2	0.2	0.2	0.2	0.2	0.2	0.2	0.2	0
ROOM INDEX	UTILIZATION FACTORS (PERCENT) $k(RI) \times RCR = 5$									
$k = 0.60$	58	47	40	57	46	39	56	46	39	33
0.80	68	57	49	67	56	49	65	55	49	42
1.00	77	66	58	75	65	58	73	66	57	50
1.25	84	73	66	82	72	66	79	71	65	58
1.50	89	79	72	87	78	71	84	76	70	63
2.00	95	87	81	94	86	80	90	84	78	71
2.50	99	92	86	97	90	85	93	88	83	75
3.00	103	96	90	100	94	89	96	91	87	79
4.00	106	101	96	104	99	95	100	96	92	83
5.00	109	104	100	106	102	99	102	99	96	86
ROOM INDEX	UF (total)									Direct
According to DIN EN 13032-2 2004			Suspended					SHRNOM = 1.25		

C Range: 0 - 360DEG  
 C Interval: 30.0DEG  
 Test Speed: HIGH  
 Temperature: 25.3DEG  
 Operators: LPC  
 Test Date: 2021-12-22

γ Range: 0 - 120DEG  
 γ Interval: 1.0DEG  
 Test System: EVERFINE GO-2000B\_V1 SYSTEM V2.0.362  
 Humidity: 65.0%  
 Test Distance: 9.200m [K=1.0000]  
 Remarks:

## ISOCANDELA DIAGRAM

Test:U:12.00V I:0.4205A P:5.046W PF:1.000 Freq:50.00Hz Lamp Flux:8.89524x1 lm		
NAME: SF15-12V-3528-72-B	TYPE: 硅胶	WEIGHT:
SPEC.:	DIM.: 21mm*11.5mm	SERIAL No.:2021122211
MFR.: OLYMPIA	SUR.:1*0.0115	Shielding Angle:



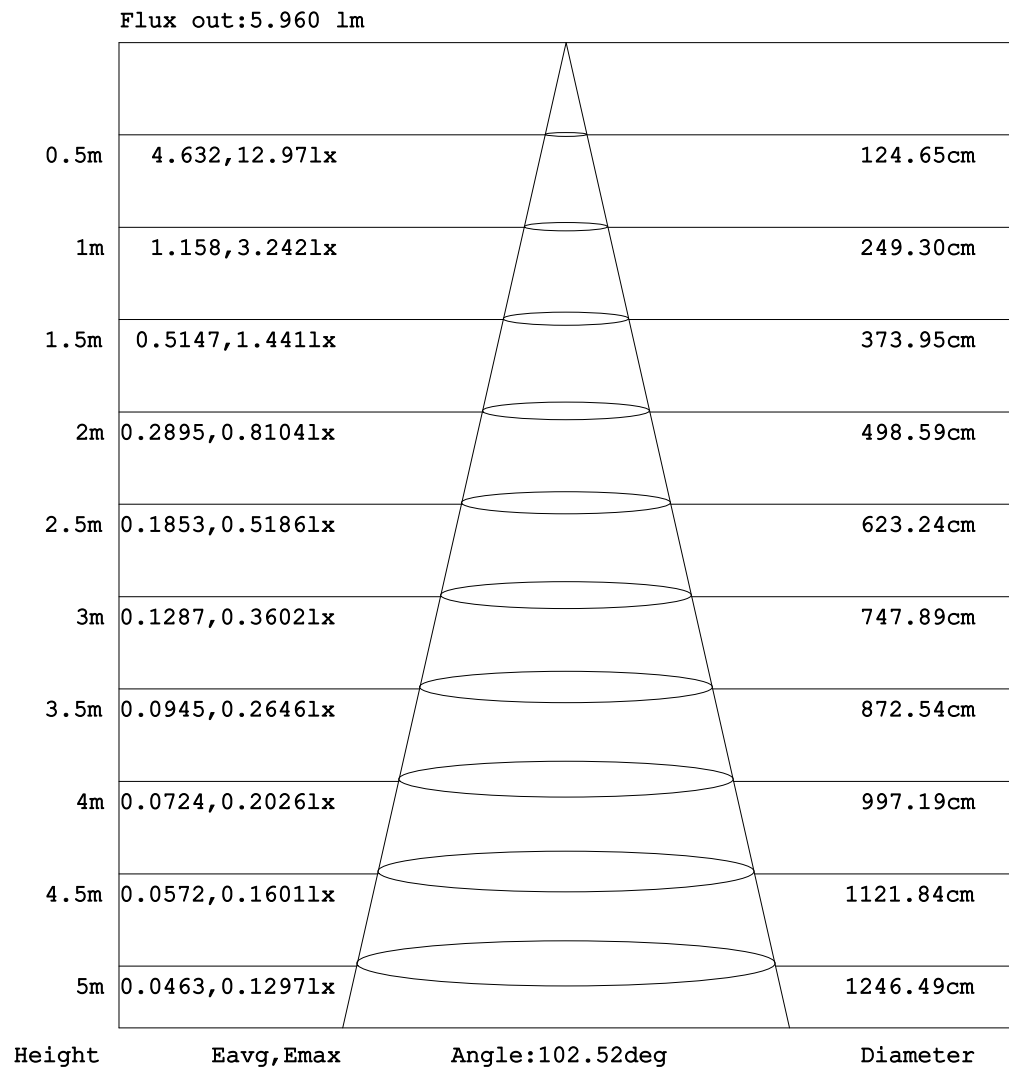
C Range: 0 - 360DEG  
C Interval: 30.0DEG  
Test Speed: HIGH  
Temperature:25.3DEG  
Operators:LPC  
Test Date:2021-12-22

$\gamma$  Range: 0 - 120DEG  
 $\gamma$  Interval: 1.0DEG  
Test System:EVERFINE GO-2000B\_V1 SYSTEM V2.0.362  
Humidity:65.0%  
Test Distance:9.200m [K=1.0000]  
Remarks:



## AAI Figure

Test:U:12.00V I:0.4205A P:5.046W PF:1.000 Freq:50.00Hz Lamp Flux:8.89524x1 lm		
NAME: SF15-12V-3528-72-B	TYPE: 硅胶	WEIGHT:
SPEC.:	DIM.: 21mm*11.5mm	SERIAL No.:2021122211
MFR.: OLYMPIA	SUR.:1*0.0115	Shielding Angle:



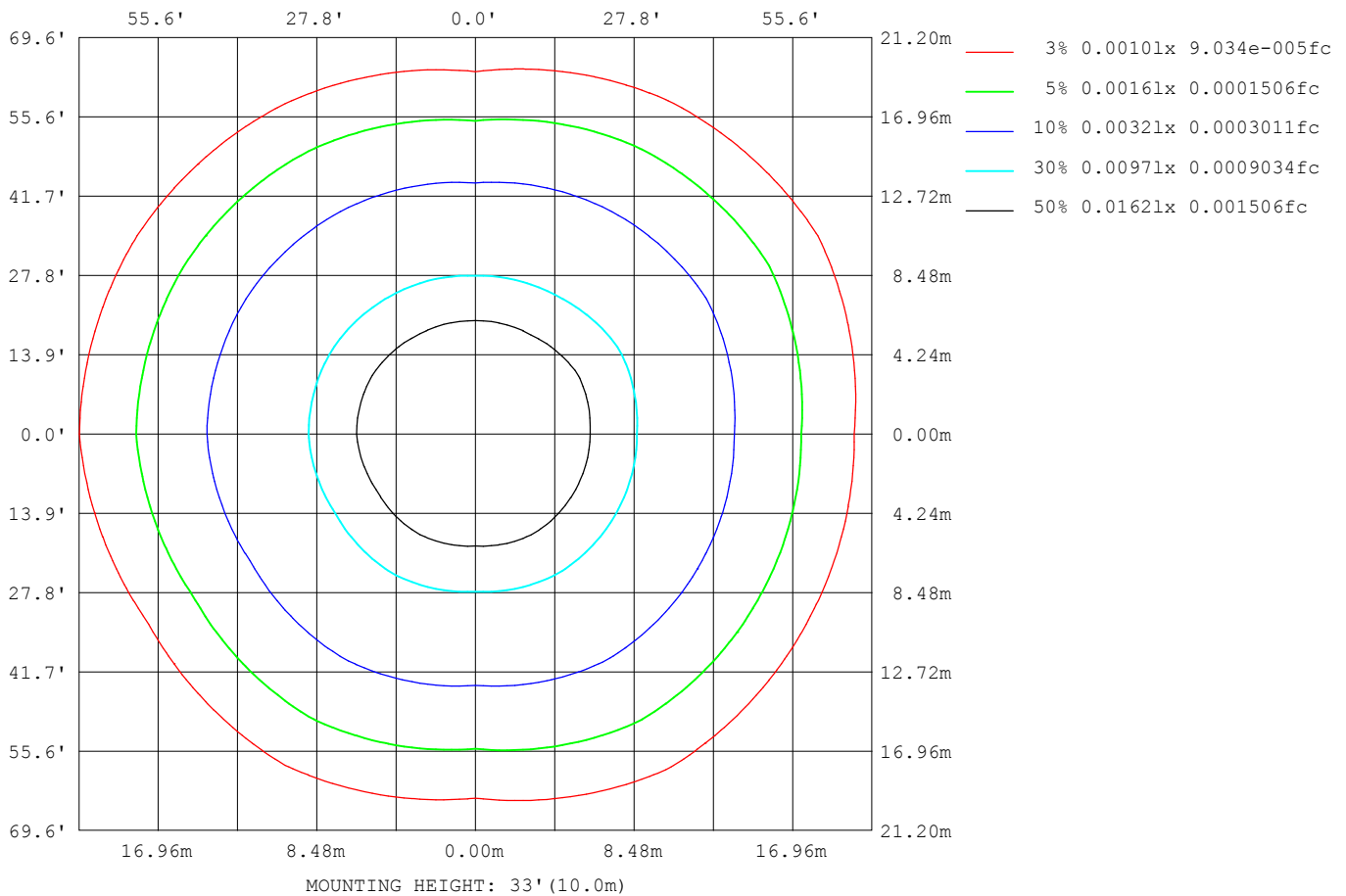
Note: The Curves indicate the illuminated area and the average illumination when the luminaire is at different distance.

C Range: 0 - 360DEG  
 C Interval: 30.0DEG  
 Test Speed: HIGH  
 Temperature: 25.3DEG  
 Operators: LPC  
 Test Date: 2021-12-22

γ Range: 0 - 120DEG  
 γ Interval: 1.0DEG  
 Test System: EVERFINE GO-2000B\_V1 SYSTEM V2.0.362  
 Humidity: 65.0%  
 Test Distance: 9.200m [K=1.0000]  
 Remarks:

## ISOLUX DIAGRAM

Test:U:12.00V I:0.4205A P:5.046W PF:1.000 Freq:50.00Hz Lamp Flux:8.89524x1 lm		
NAME: SF15-12V-3528-72-B	TYPE: 硅胶	WEIGHT:
SPEC.:	DIM.: 21mm*11.5mm	SERIAL No.:2021122211
MFR.: OLYMPIA	SUR.:1*0.0115	Shielding Angle:



C Range: 0 - 360DEG  
C Interval: 30.0DEG  
Test Speed: HIGH  
Temperature:25.3DEG  
Operators:LPC  
Test Date:2021-12-22

$\gamma$  Range: 0 - 120DEG  
 $\gamma$  Interval: 1.0DEG  
Test System:EVERFINE GO-2000B\_V1 SYSTEM V2.0.362  
Humidity:65.0%  
Test Distance:9.200m [K=1.0000]  
Remarks:

## LED Avg.L Report

Test:U:12.00V I:0.4205A P:5.046W PF:1.000 Freq:50.00Hz Lamp Flux:8.89524x1 lm		
NAME: SF15-12V-3528-72-B	TYPE:硅胶	WEIGHT:
SPEC.:	DIM.: 21mm*11.5mm	SERIAL No.:2021122211
MFR.: OLYMPIA	SUR.:1*0.0115	Shielding Angle:

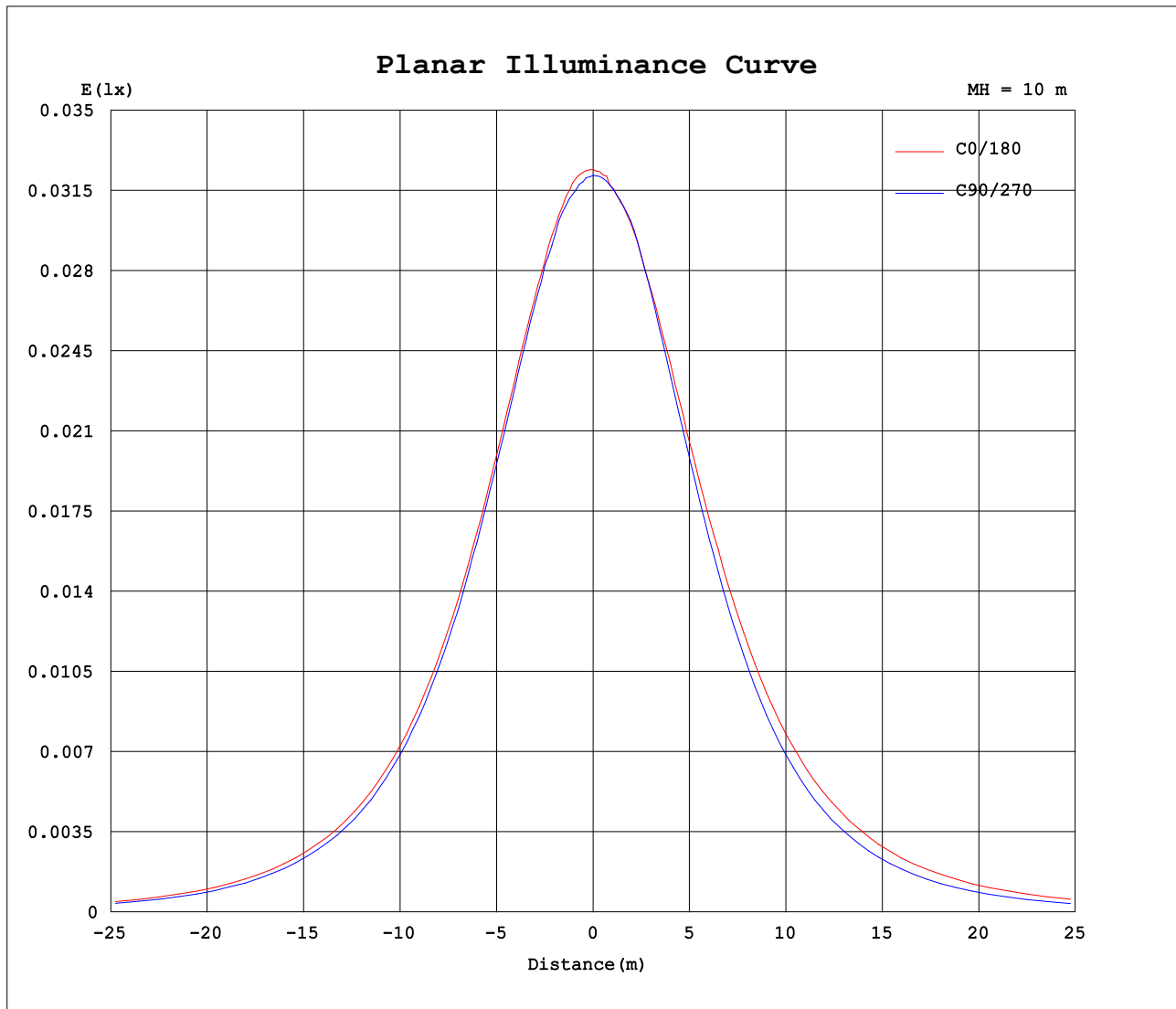
AvgL	cd/m2
L_0~180 (65) av	236
L_0~180 (75) av	204
L_0~180 (85) av	160
L_90~270 (65) av	184
L_90~270 (75) av	125
L_90~270 (85) av	0
L_45 (65) av	233
L_45 (75) av	203
L_45 (85) av	139

Standard: GB/T 29293-2012

C Range: 0 - 360DEG  
C Interval: 30.0DEG  
Test Speed: HIGH  
Temperature:25.3DEG  
Operators:LPC  
Test Date:2021-12-22

γ Range: 0 - 120DEG  
γ Interval: 1.0DEG  
Test System:EVERFINE GO-2000B\_V1 SYSTEM V2.0.362  
Humidity:65.0%  
Test Distance:9.200m [K=1.0000]  
Remarks:

## Planar Illuminance Curve



C Range: 0 - 360DEG  
C Interval: 30.0DEG  
Test Speed: HIGH  
Temperature: 25.3DEG  
Operators: LPC  
Test Date: 2021-12-22

$\gamma$  Range: 0 - 120DEG  
 $\gamma$  Interval: 1.0DEG  
Test System: EVERFINE GO-2000B\_V1 SYSTEM V2.0.362  
Humidity: 65.0%  
Test Distance: 9.200m [K=1.0000]  
Remarks:

## LUMINOUS DISTRIBUTION INTENSITY DATA

Test:U:12.00V I:0.4205A P:5.046W PF:1.000 Freq:50.00Hz Lamp Flux:8.89524x1 lm		
NAME: SF15-12V-3528-72-B	TYPE: 硅胶	WEIGHT:
SPEC.:	DIM.: 21mm*11.5mm	SERIAL No.:2021122211
MFR.: OLYMPIA	SUR.:1*0.0115	Shielding Angle:

Table--1

UNIT: cd

C (DEG) γ (DEG)	0	30	60	90	120	150	180	210	240	270	300	330						
0	3.24	3.22	3.21	3.22	3.22	3.23	3.24	3.22	3.21	3.22	3.22	3.23						
5	3.24	3.20	3.20	3.19	3.21	3.22	3.21	3.22	3.20	3.21	3.21	3.23						
10	3.19	3.15	3.19	3.16	3.19	3.13	3.19	3.20	3.17	3.19	3.19	3.22						
15	3.09	3.08	3.13	3.06	3.10	3.05	3.12	3.15	3.06	3.12	3.09	3.16						
20	2.98	2.97	3.01	2.93	2.99	2.94	3.03	3.05	2.94	2.99	2.96	3.05						
25	2.83	2.83	2.86	2.78	2.84	2.80	2.92	2.92	2.81	2.83	2.81	2.91						
30	2.66	2.67	2.69	2.61	2.67	2.65	2.77	2.77	2.65	2.64	2.63	2.76						
35	2.48	2.48	2.50	2.40	2.50	2.46	2.60	2.59	2.47	2.43	2.45	2.59						
40	2.28	2.28	2.30	2.19	2.30	2.28	2.41	2.40	2.29	2.19	2.24	2.41						
45	2.06	2.06	2.09	1.94	2.08	2.04	2.20	2.18	2.06	1.95	2.05	2.20						
50	1.81	1.83	1.86	1.69	1.84	1.81	1.98	1.95	1.83	1.68	1.83	1.97						
55	1.58	1.58	1.62	1.45	1.59	1.56	1.74	1.70	1.59	1.42	1.60	1.73						
60	1.32	1.34	1.39	1.18	1.35	1.32	1.50	1.46	1.35	1.15	1.37	1.49						
65	1.06	1.08	1.13	0.91	1.09	1.04	1.24	1.19	1.08	0.88	1.12	1.23						
70	0.78	0.82	0.87	0.64	0.82	0.77	0.96	0.92	0.81	0.61	0.85	0.97						
75	0.53	0.57	0.62	0.39	0.56	0.51	0.69	0.64	0.53	0.36	0.59	0.70						
80	0.29	0.30	0.37	0.15	0.31	0.27	0.44	0.39	0.28	0.13	0.34	0.44						
85	0.12	0.12	0.16	0.00	0.12	0.09	0.20	0.18	0.06	0.00	0.12	0.22						
90	0.03	0.00	0.03	0.00	0.02	0.00	0.04	0.05	0.00	0.00	0.00	0.07						
95	0.00	0.00	0.01	0.00	0.01	0.00	0.00	0.00	0.00	0.00	0.00	0.01						
100	0.00	0.00	0.00	0.00	0.01	0.00	0.00	0.00	0.00	0.00	0.00	0.00						
105	0.00	0.00	0.00	0.00	0.01	0.00	0.00	0.00	0.00	0.00	0.00	0.00						
110	0.00	0.00	0.00	0.00	0.00	0.00	0.00	0.00	0.00	0.00	0.00	0.00						
115	0.00	0.00	0.00	0.00	0.00	0.00	0.00	0.00	0.00	0.00	0.00	0.00						
120	0.00	0.00	0.00	0.00	0.00	0.00	0.00	0.00	0.00	0.00	0.00	0.00						
125	0.00	0.00	0.00	0.00	0.00	0.00	0.00	0.00	0.00	0.00	0.00	0.00						
130	0.00	0.00	0.00	0.00	0.00	0.00	0.00	0.00	0.00	0.00	0.00	0.00						
135	0.00	0.00	0.00	0.00	0.00	0.00	0.00	0.00	0.00	0.00	0.00	0.00						
140	0.00	0.00	0.00	0.00	0.00	0.00	0.00	0.00	0.00	0.00	0.00	0.00						
145	0.00	0.00	0.00	0.00	0.00	0.00	0.00	0.00	0.00	0.00	0.00	0.00						
150	0.00	0.00	0.00	0.00	0.00	0.00	0.00	0.00	0.00	0.00	0.00	0.00						
155	0.00	0.00	0.00	0.00	0.00	0.00	0.00	0.00	0.00	0.00	0.00	0.00						
160	0.00	0.00	0.00	0.00	0.00	0.00	0.00	0.00	0.00	0.00	0.00	0.00						
165	0.00	0.00	0.00	0.00	0.00	0.00	0.00	0.00	0.00	0.00	0.00	0.00						
170	0.00	0.00	0.00	0.00	0.00	0.00	0.00	0.00	0.00	0.00	0.00	0.00						
175	0.00	0.00	0.00	0.00	0.00	0.00	0.00	0.00	0.00	0.00	0.00	0.00						
180	0.00	0.00	0.00	0.00	0.00	0.00	0.00	0.00	0.00	0.00	0.00	0.00						

C Range: 0 - 360DEG  
C Interval: 30.0DEG  
Test Speed: HIGH  
Temperature:25.3DEG  
Operators:LPC  
Test Date:2021-12-22

γ Range: 0 - 120DEG  
γ Interval: 1.0DEG  
Test System:EVERFINE GO-2000B\_V1 SYSTEM V2.0.362  
Humidity:65.0%  
Test Distance:9.200m [K=1.0000]  
Remarks:

## Photometric Data Table [cd]

G/C	0.0	30.0	60.0	90.0	120.0	150.0	180.0	210.0	240.0	270.0
0.0	3.242	3.222	3.211	3.216	3.216	3.227	3.242	3.222	3.211	3.216
3.0	3.242	3.206	3.211	3.201	3.216	3.226	3.232	3.221	3.206	3.216
6.0	3.237	3.196	3.201	3.186	3.206	3.181	3.211	3.213	3.186	3.207
9.0	3.197	3.163	3.191	3.171	3.195	3.161	3.196	3.205	3.171	3.198
12.0	3.156	3.126	3.181	3.111	3.161	3.101	3.171	3.197	3.116	3.181
15.0	3.091	3.076	3.126	3.055	3.101	3.050	3.121	3.151	3.061	3.116
18.0	3.031	3.010	3.061	2.995	3.036	3.005	3.075	3.091	3.000	3.046
21.0	2.955	2.940	2.976	2.910	2.960	2.925	3.010	3.026	2.930	2.955
24.0	2.870	2.859	2.895	2.814	2.875	2.839	2.940	2.950	2.844	2.860
27.0	2.770	2.769	2.795	2.714	2.780	2.744	2.859	2.860	2.754	2.755
30.0	2.664	2.668	2.694	2.613	2.674	2.648	2.774	2.770	2.648	2.644
33.0	2.559	2.558	2.579	2.487	2.574	2.538	2.683	2.669	2.548	2.518
36.0	2.438	2.442	2.463	2.362	2.458	2.432	2.568	2.558	2.447	2.378
39.0	2.317	2.316	2.337	2.226	2.337	2.302	2.452	2.438	2.317	2.242
42.0	2.192	2.196	2.207	2.085	2.207	2.181	2.332	2.312	2.196	2.096
45.0	2.056	2.060	2.086	1.945	2.076	2.040	2.201	2.182	2.060	1.945
48.0	1.915	1.919	1.950	1.799	1.940	1.904	2.070	2.046	1.924	1.790
51.0	1.770	1.794	1.805	1.638	1.795	1.758	1.939	1.900	1.794	1.629
54.0	1.619	1.638	1.669	1.497	1.649	1.618	1.799	1.754	1.638	1.483
57.0	1.473	1.497	1.533	1.336	1.508	1.472	1.648	1.604	1.502	1.312
60.0	1.322	1.341	1.388	1.175	1.352	1.321	1.497	1.463	1.346	1.146
63.0	1.157	1.186	1.237	1.010	1.197	1.160	1.336	1.302	1.185	0.9906
66.0	1.001	1.025	1.081	0.8539	1.036	0.9946	1.181	1.141	1.025	0.8247
69.0	0.8398	0.8640	0.9202	0.6880	0.8750	0.8287	1.015	0.9754	0.8589	0.6639
72.0	0.6791	0.7031	0.7695	0.5271	0.7142	0.6778	0.8538	0.8097	0.6930	0.5132
75.0	0.5283	0.5674	0.6187	0.3867	0.5584	0.5122	0.6880	0.6438	0.5323	0.3573
78.0	0.3774	0.3966	0.4679	0.2408	0.4026	0.3514	0.5322	0.4880	0.3765	0.2166
81.0	0.2517	0.2658	0.3221	0.1101	0.2667	0.2208	0.3815	0.3422	0.2308	0.0958
84.0	0.1511	0.1306	0.1915	0	0.1462	0.1203	0.2457	0.2166	0.1150	0.0053
87.0	0.0806	0.0402	0.0858	0	0.0606	0.0401	0.1355	0.1209	0.0050	0
90.0	0.0303	0	0.0303	0	0.0202	0	0.0402	0.0454	0	0
93.0	0.0051	0	0.0051	0	0.0051	0	0	0.0051	0	0
96.0	0	0	0.0001	0	0.0050	0	0	0	0	0
99.0	0	0	0	0	0.0050	0	0	0	0	0
102.0	0	0	0	0	0.0050	0	0	0	0	0
105.0	0	0	0	0	0.0050	0	0	0	0	0
108.0	0	0	0	0	0	0	0	0	0	0
111.0	0	0	0	0	0	0	0	0	0	0
114.0	0	0	0	0	0	0	0	0	0	0
117.0	0	0	0	0	0	0	0	0	0	0
120.0	0	0	0	0	0	0	0	0	0	0
G/C	300.0	330.0								
0.0	3.216	3.227								
3.0	3.211	3.227								
6.0	3.196	3.225								
9.0	3.181	3.223								
12.0	3.146	3.202								
15.0	3.091	3.161								
18.0	3.010	3.096								
21.0	2.935	3.016								
24.0	2.849	2.940								
27.0	2.759	2.855								
30.0	2.633	2.759								
33.0	2.527	2.674								
36.0	2.402	2.563								
39.0	2.281	2.443								
42.0	2.166	2.332								
45.0	2.045	2.197								
48.0	1.924	2.066								
51.0	1.794	1.925								
54.0	1.648	1.785								
57.0	1.512	1.629								
60.0	1.371	1.493								
63.0	1.226	1.337								
66.0	1.075	1.172								
69.0	0.9141	1.021								
72.0	0.7482	0.8499								
75.0	0.5925	0.6990								
78.0	0.4367	0.5432								
81.0	0.2860	0.3924								
84.0	0.1554	0.2468								
87.0	0.0401	0.1411								
90.0	0	0.0706								

C Range: 0 - 360DEG  
 C Interval: 30.0DEG  
 Test Speed: HIGH  
 Temperature: 25.3DEG  
 Operators: LPC  
 Test Date: 2021-12-22

γ Range: 0 - 120DEG  
 γ Interval: 1.0DEG  
 Test System: EVERFINE GO-2000B\_V1 SYSTEM V2.0.362  
 Humidity: 65.0%  
 Test Distance: 9.200m [K=1.0000]  
 Remarks:

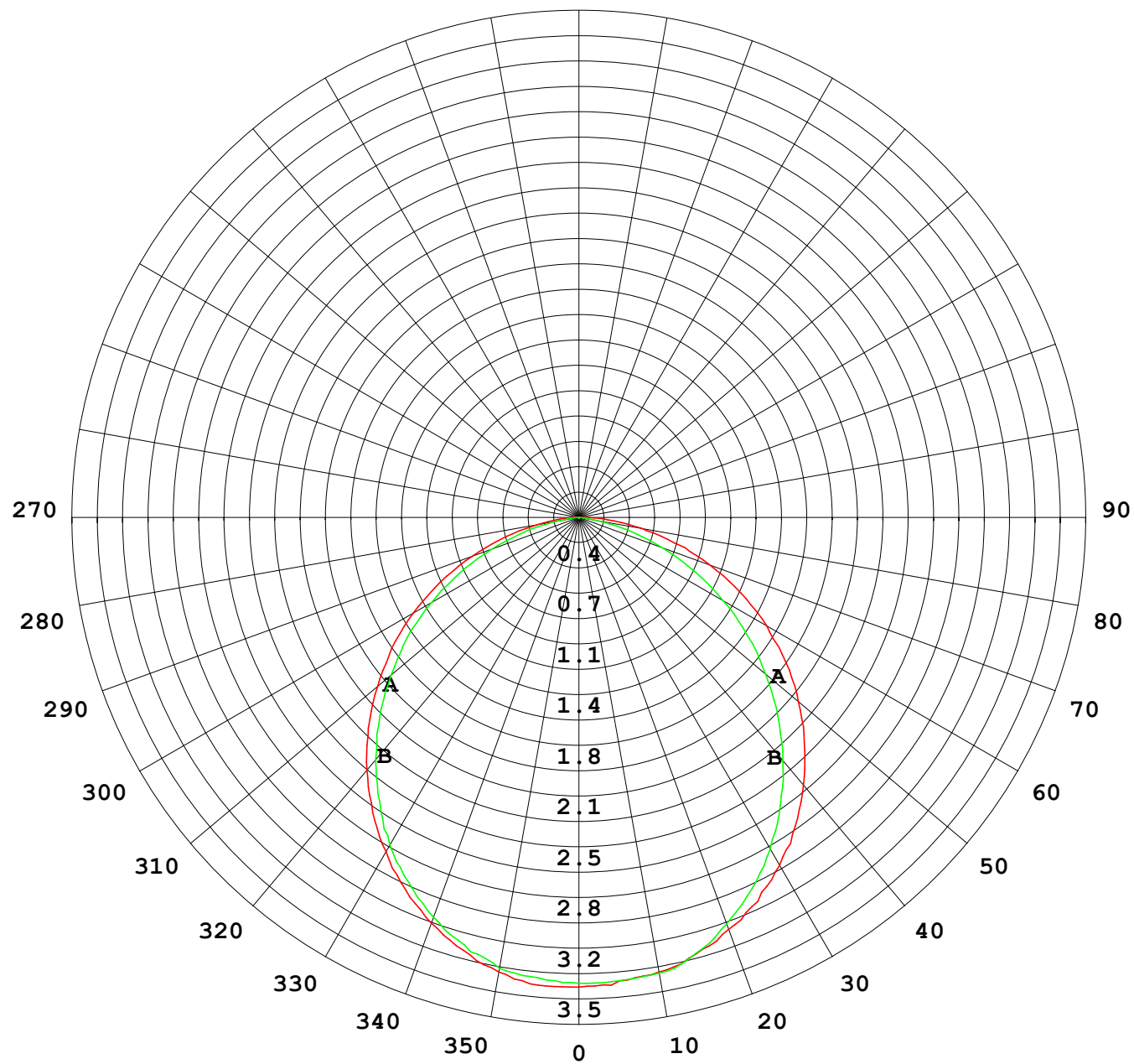
## Photometric Data Table [cd]

93.0	0	0.0202
96.0	0	0.0001
99.0	0	0
102.0	0	0
105.0	0	0
108.0	0	0
111.0	0	0
114.0	0	0
117.0	0	0
120.0	0	0

C Range: 0 - 360DEG  
C Interval: 30.0DEG  
Test Speed: HIGH  
Temperature: 25.3DEG  
Operators: LPC  
Test Date: 2021-12-22

γ Range: 0 - 120DEG  
γ Interval: 1.0DEG  
Test System: EVERFINE GO-2000B\_V1 SYSTEM V2.0.362  
Humidity: 65.0%  
Test Distance: 9.200m [K=1.0000]  
Remarks:

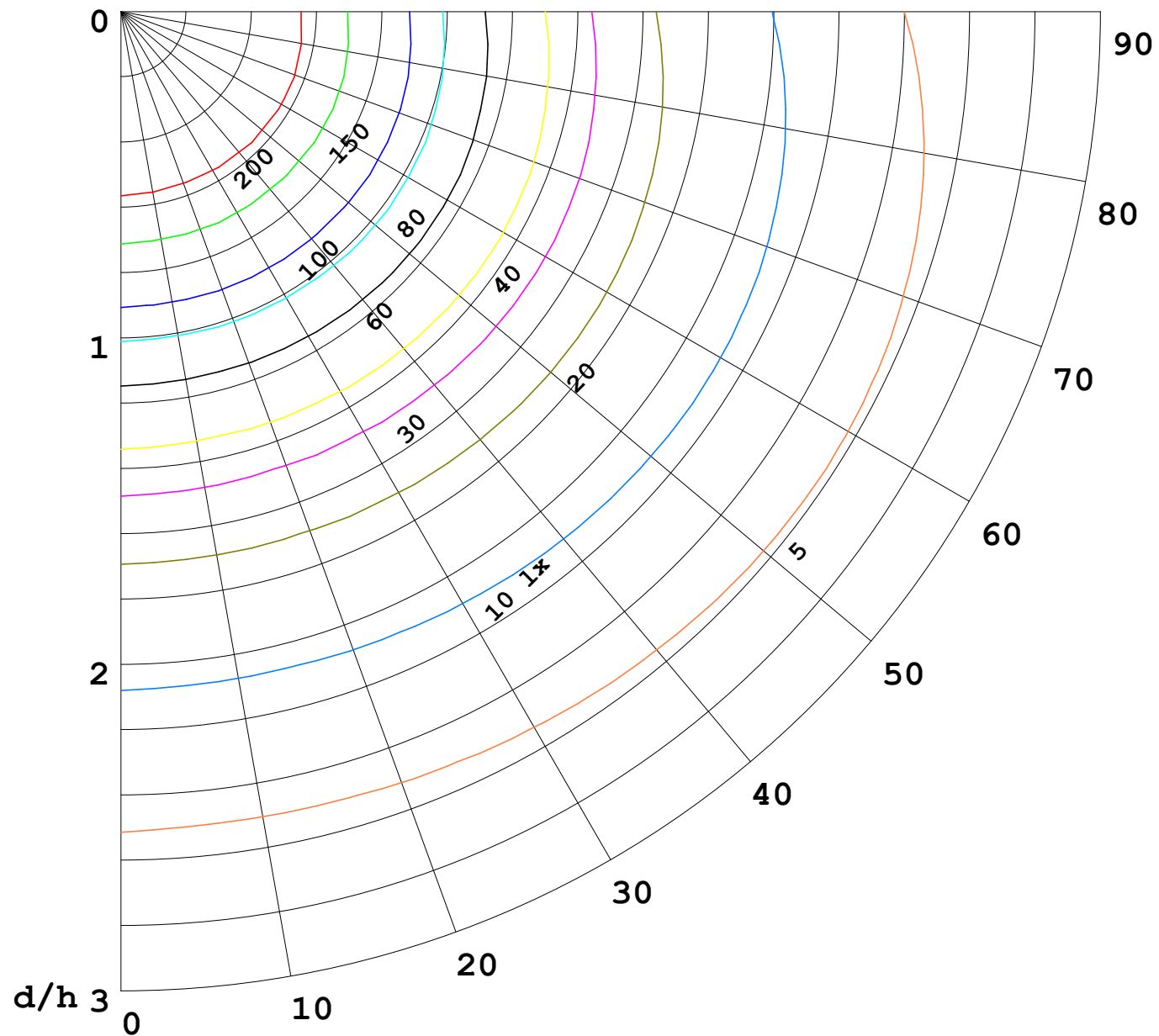
I (cd)





1000 lm

$\kappa = 1$



F = 5000 lm  
 K = 0.7  
 Hcc = 0.0 m  
 Hfc = 0.0 m  
 Eave = 100 lx

	Pcc	Pw	Pfc
—	70	50	30
—	50	30	20

