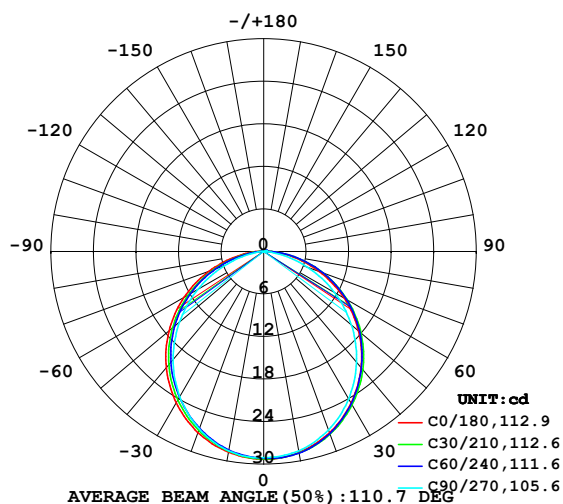


LUMINAIRE PHOTOMETRIC TEST REPORT

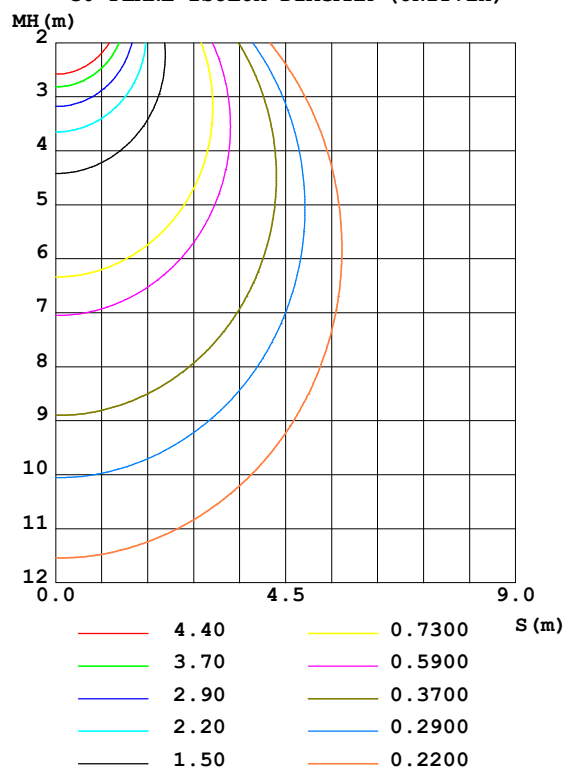
Test:U:12.00V I:0.3605A P:4.326W PF:1.000 Freq:50.00Hz Lamp Flux:83.5982x1 lm		
NAME: SF15-12V-3528-72-4500-80	TYPE: 硅胶	WEIGHT:
SPEC.:	DIM.: 21mm*11.5mm	SERIAL No.:2021122208
MFR.: OLYMPIA	SUR.:1*0.0115	Shielding Angle:

DATA OF LAMP		PHOTOMETRIC DATA Eff: 19.32 lm/W			
MODEL	3528	I _{max} (cd)	29.31	S/MH (C0/180)	1.25
NOMINAL POWER (W)	5	LOR (%)	100.0	S/MH (C90/270)	1.22
RATED VOLTAGE (V)	12	TOTAL FLUX (lm)	83.598	η UP, DN (C0-180)	0.7, 48.6
NOMINAL FLUX (lm)	83.5982	CIE CLASS	DIRECT	η UP, DN (C180-360)	0.5, 50.1
LAMPS INSIDE	1	η up (%)	1.3	CIBSE SHR NOM	1.25
TEST VOLTAGE (V)	12	η down (%)	98.7	CIBSE SHR MAX	1.35

LUMINOUS INTENSITY DISTRIBUTION DIAGRAM



C0 PLANE ISOLUX DIAGRAM (UNIT:lx)



C Range: 0 - 360DEG
 C Interval: 30.0DEG
 Test Speed: HIGH
 Temperature: 25.3DEG
 Operators: LPC
 Test Date: 2021-12-22

γ Range: 0 - 120DEG
 γ Interval: 1.0DEG
 Test System: EVERFINE GO-2000B_V1 SYSTEM V2.0.362
 Humidity: 65.0%
 Test Distance: 9.200m [K=1.0000]
 Remarks:

ZONAL FLUX DIAGRAM

ZONAL FLUX DIAGRAM:

γ	C0	C45	C90	C135	C180	C225	C270	C315	γ	Φ zone	Φ total	%lum, lamp
10	28.78	28.86	28.54	28.15	28.74	28.51	28.55	28.94	0- 10	2.758	2.758	3.3,3.3
20	27.20	27.37	26.79	26.15	27.19	26.68	26.62	27.56	10- 20	7.875	10.63	12.7,12.7
30	24.69	24.86	24.01	23.30	24.67	23.99	23.67	25.18	20- 30	11.85	22.49	26.9,26.9
40	21.39	21.62	20.40	19.75	21.39	20.60	19.89	22.12	30- 40	14.20	36.69	43.9,43.9
50	17.45	17.80	16.17	15.65	17.42	16.60	15.49	18.58	40- 50	14.67	51.36	61.4,61.4
60	13.08	13.55	11.50	11.10	12.99	12.10	10.74	14.42	50- 60	13.24	64.60	77.3,77.3
70	8.382	8.958	6.639	6.352	8.232	7.347	5.894	9.908	60- 70	10.11	74.71	89.4,89.4
80	3.854	4.377	2.162	2.169	3.670	2.842	1.591	5.249	70- 80	5.865	80.58	96.4,96.4
90	0.9465	0.9678	0.2438	0.5113	0.7876	0.4555	0.1198	1.342	80- 90	1.952	82.53	98.7,98.7
100	0.3318	0.4061	0.2865	0.4621	0.2840	0.2997	0.1256	0.2864	90-100	0.4802	83.01	99.3,99.3
110	0.3116	0.3319	0.3363	0.4520	0.1549	0.2449	0.1910	0.2704	100-110	0.3299	83.34	99.7,99.7
120	0.3769	0.0646	0.1005	0.0842	0.0258	0.1803	0.0574	0.2588	110-120	0.2517	83.59	100,100
130	0	0	0	0	0	0	0	0	120-130	0.0082	83.60	100,100
140	0	0	0	0	0	0	0	0	130-140	0	83.60	100,100
150	0	0	0	0	0	0	0	0	140-150	0	83.60	100,100
160	0	0	0	0	0	0	0	0	150-160	0	83.60	100,100
170	0	0	0	0	0	0	0	0	160-170	0	83.60	100,100
180	0	0	0	0	0	0	0	0	170-180	0	83.60	100,100
DEG	LUMINOUS INTENSITY:cd									UNIT:lm		

Conical surface Flux(90deg): 44.086 lm

%lum = 52.7%

%lamp = 52.7%

Conical surface Flux(120deg): 64.603 lm

%lum = 77.3%

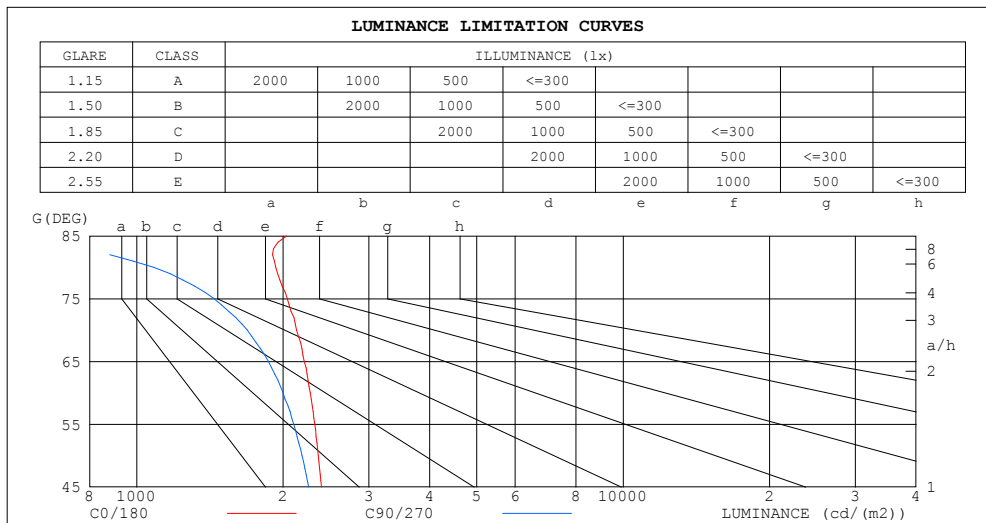
%lamp = 77.3%

C Range: 0 - 360DEG
 C Interval: 30.0DEG
 Test Speed: HIGH
 Temperature:25.3DEG
 Operators:LPC
 Test Date:2021-12-22

γ Range: 0 - 120DEG
 γ Interval: 1.0DEG
 Test System:EVERFINE GO-2000B_V1 SYSTEM V2.0.362
 Humidity:65.0%
 Test Distance:9.200m [K=1.0000]
 Remarks:

LUMINANCE LIMITATION CURVES

Test:U:12.00V I:0.3605A P:4.326W PF:1.000 Freq:50.00Hz Lamp Flux:83.5982x1 lm		
NAME: SF15-12V-3528-72-4500-80	TYPE: 硅胶	WEIGHT:
SPEC.:	DIM.: 21mm*11.5mm	SERIAL No.:2021122208
MFR.: OLYMPIA	SUR.:1*0.0115	Shielding Angle:



LUMINANCE cd/(m2)		
G (DEG)	C0/180	C90/270
85	2034	524
80	1930	1083
75	2038	1441
70	2131	1688
65	2209	1865
60	2275	2000
55	2322	2102
50	2361	2187
45	2397	2257

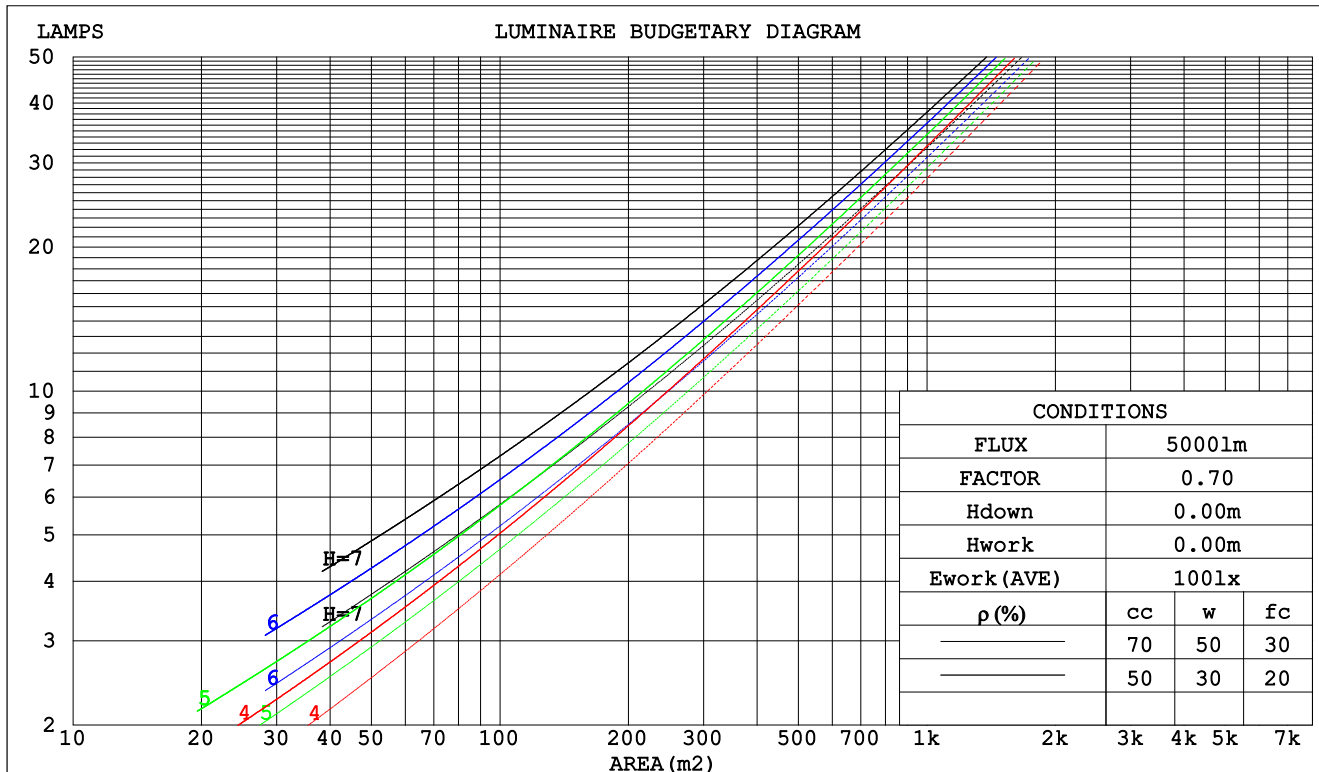
C Range: 0 - 360DEG
C Interval: 30.0DEG
Test Speed: HIGH
Temperature:25.3DEG
Operators:LPC
Test Date:2021-12-22

γ Range: 0 - 120DEG
 γ Interval: 1.0DEG
Test System:EVERFINE GO-2000B_V1 SYSTEM V2.0.362
Humidity:65.0%
Test Distance:9.200m [K=1.0000]
Remarks:

CU AND LUMINAIRE BUDGETARY ESTIMATE DIAGRAM

Test:U:12.00V I:0.3605A P:4.326W PF:1.000 Freq:50.00Hz Lamp Flux:83.5982x1 lm		
NAME: SF15-12V-3528-72-4500-80	TYPE: 硅胶	WEIGHT:
SPEC.:	DIM.: 21mm*11.5mm	SERIAL No.:2021122208
MFR.: OLYMPIA	SUR.:1*0.0115	Shielding Angle:

pcc	80%			70%			50%			30%			10%			0
pw	50%	30%	10%	50%	30%	10%	50%	30%	10%	50%	30%	10%	50%	30%	10%	0
pfc	20%			20%			20%			20%			20%			0
RCR	RCR:Room Cavity Ratio						Coefficients of Utilization(CU)									
0.0	1.19	1.19	1.19	1.16	1.16	1.16	1.10	1.10	1.10	1.05	1.05	1.05	1.01	1.01	1.01	.99
1.0	1.03	.99	.95	1.01	.97	.93	.96	.93	.90	.92	.90	.87	.88	.86	.84	.82
2.0	.90	.83	.77	.88	.82	.76	.84	.79	.74	.81	.76	.72	.77	.74	.71	.68
3.0	.79	.71	.64	.77	.70	.63	.74	.68	.62	.71	.66	.61	.68	.64	.60	.57
4.0	.70	.61	.54	.68	.60	.54	.66	.59	.53	.63	.57	.52	.61	.56	.51	.49
5.0	.62	.53	.47	.61	.53	.46	.59	.51	.46	.57	.50	.45	.55	.49	.44	.42
6.0	.56	.47	.41	.55	.47	.40	.53	.46	.40	.51	.45	.40	.50	.44	.39	.37
7.0	.51	.42	.36	.50	.42	.36	.48	.41	.35	.47	.40	.35	.45	.39	.35	.33
8.0	.46	.38	.32	.46	.38	.32	.44	.37	.32	.43	.36	.31	.42	.36	.31	.29
9.0	.43	.34	.29	.42	.34	.29	.41	.34	.28	.40	.33	.28	.38	.32	.28	.26
10.0	.39	.31	.26	.39	.31	.26	.38	.31	.26	.37	.30	.26	.36	.30	.25	.24



C Range: 0 - 360DEG
 C Interval: 30.0DEG
 Test Speed: HIGH
 Temperature:25.3DEG
 Operators:LPC
 Test Date:2021-12-22

γ Range: 0 - 120DEG
 γ Interval: 1.0DEG
 Test System:EVERFINE GO-2000B_V1 SYSTEM V2.0.362
 Humidity:65.0%
 Test Distance:9.200m [K=1.0000]
 Remarks:

WEC AND CCEC

Test:U:12.00V I:0.3605A P:4.326W PF:1.000 Freq:50.00Hz Lamp Flux:83.5982x1 lm		
NAME: SF15-12V-3528-72-4500-80	TYPE: 硅胶	WEIGHT:
SPEC.:	DIM.: 21mm*11.5mm	SERIAL No.:2021122208
MFR.: OLYMPIA	SUR.:1*0.0115	Shielding Angle:

pcc	80%			70%			50%			30%			10%			0	
pw	50%	30%	10%	50%	30%	10%	50%	30%	10%	50%	30%	10%	50%	30%	10%	0	
pfc	20%			20%			20%			20%			20%			0	
RCR	RCR:Room Cavity Ratio						Wall Exitance Coeffcients(WEC)										
0.0																	
1.0	.314	.179	.057	.307	.175	.056	.293	.168	.054	.280	.161	.052	.268	.155	.050		
2.0	.294	.161	.049	.287	.158	.049	.275	.153	.047	.263	.148	.046	.253	.143	.045		
3.0	.271	.144	.043	.265	.142	.043	.254	.138	.042	.244	.134	.041	.234	.130	.040		
4.0	.250	.130	.038	.244	.128	.038	.235	.124	.037	.226	.121	.037	.217	.118	.036		
5.0	.230	.117	.034	.226	.116	.034	.217	.113	.033	.209	.110	.033	.202	.108	.032		
6.0	.214	.107	.031	.209	.106	.030	.202	.103	.030	.194	.101	.030	.188	.099	.029		
7.0	.199	.098	.028	.195	.097	.028	.188	.095	.027	.182	.093	.027	.175	.091	.027		
8.0	.186	.091	.025	.182	.090	.025	.176	.088	.025	.170	.086	.025	.165	.084	.025		
9.0	.174	.084	.023	.171	.083	.023	.165	.082	.023	.160	.080	.023	.155	.079	.023		
10.0	.163	.078	.022	.161	.078	.022	.156	.076	.021	.151	.075	.021	.146	.074	.021		

pcc	80%			70%			50%			30%			10%			0
pw	50%	30%	10%	50%	30%	10%	50%	30%	10%	50%	30%	10%	50%	30%	10%	0
pfc	20%			20%			20%			20%			20%			0
RCR	RCR:Room Cavity Ratio						Ceiling Cavity Exitance Coefficients(CCEC)									
0.0	.200	.200	.200	.171	.171	.171	.117	.117	.117	.067	.067	.067	.021	.021	.021	
1.0	.190	.166	.144	.163	.142	.124	.111	.098	.086	.064	.057	.050	.021	.018	.016	
2.0	.182	.142	.108	.156	.122	.093	.107	.084	.065	.062	.049	.038	.020	.016	.012	
3.0	.175	.124	.084	.150	.107	.073	.103	.074	.051	.059	.043	.030	.019	.014	.010	
4.0	.167	.111	.068	.143	.096	.059	.099	.067	.042	.057	.039	.025	.018	.013	.008	
5.0	.159	.101	.057	.137	.087	.050	.094	.061	.035	.055	.036	.021	.018	.012	.007	
6.0	.152	.092	.049	.131	.080	.043	.090	.056	.030	.052	.033	.018	.017	.011	.006	
7.0	.145	.085	.043	.125	.074	.038	.086	.052	.027	.050	.031	.016	.016	.010	.005	
8.0	.139	.080	.039	.120	.069	.034	.083	.048	.024	.048	.029	.014	.016	.009	.005	
9.0	.133	.075	.035	.114	.065	.031	.079	.046	.022	.046	.027	.013	.015	.009	.004	
10.0	.127	.070	.033	.110	.061	.028	.076	.043	.020	.044	.025	.012	.014	.008	.004	

C Range: 0 - 360DEG
 C Interval: 30.0DEG
 Test Speed: HIGH
 Temperature:25.3DEG
 Operators:LPC
 Test Date:2021-12-22

γ Range: 0 - 120DEG
 γ Interval: 1.0DEG
 Test System:EVERFINE GO-2000B_V1 SYSTEM V2.0.362
 Humidity:65.0%
 Test Distance:9.200m [K=1.0000]
 Remarks:

UGR(Unified Glare Rating) Table

Test:U:12.00V I:0.3605A P:4.326W PF:1.000 Freq:50.00Hz Lamp Flux:83.5982x1 lm											
NAME: SF15-12V-3528-72-4500-80						TYPE:硅胶			WEIGHT:		
SPEC.:						DIM.: 21mm*11.5mm			SERIAL No.:2021122208		
MFR.: OLYMPIA						SUR.:1*0.0115			Shielding Angle:		
ceiling/cavity	0.7	0.7	0.5	0.5	0.3	0.7	0.7	0.5	0.5	0.3	
walls	0.5	0.3	0.5	0.3	0.3	0.5	0.3	0.5	0.3	0.3	
working plane	0.2	0.2	0.2	0.2	0.2	0.2	0.2	0.2	0.2	0.2	
Room dimensions		Viewed crosswise					Viewed endwise				
x = 2H y = 2H	24.6	26.1	24.9	26.3	26.6	24.3	25.8	24.5	26.0	26.2	
	3H	26.2	27.6	26.5	27.8	28.1	25.6	27.0	26.0	27.3	
	4H	26.9	28.2	27.2	28.5	28.7	26.1	27.5	26.5	27.7	
	6H	27.4	28.6	27.7	28.9	29.2	26.4	27.7	26.8	28.0	
	8H	27.6	28.8	27.9	29.1	29.4	26.5	27.7	26.8	28.0	
	12H	27.7	28.9	28.1	29.2	29.5	26.5	27.6	26.8	27.9	
4H	2H	25.3	26.6	25.6	26.9	27.1	25.0	26.3	25.3	26.6	
	3H	27.1	28.2	27.4	28.6	28.9	26.7	27.8	27.0	28.2	
	4H	27.9	28.9	28.3	29.3	29.7	27.4	28.4	27.7	28.8	
	6H	28.5	29.5	29.0	29.9	30.3	27.8	28.7	28.2	29.1	
	8H	28.8	29.7	29.2	30.1	30.5	27.9	28.8	28.3	29.2	
	12H	29.0	29.8	29.4	30.2	30.6	27.9	28.7	28.4	29.1	
8H	4H	28.2	29.1	28.7	29.5	29.9	27.8	28.7	28.2	29.0	
	6H	29.1	29.8	29.5	30.2	30.7	28.5	29.2	28.9	29.6	
	8H	29.4	30.1	29.9	30.5	31.0	28.7	29.3	29.2	29.8	
	12H	29.8	30.3	30.3	30.8	31.3	28.8	29.4	29.3	29.9	
12H	4H	28.3	29.1	28.7	29.5	29.9	27.8	28.6	28.3	29.0	
	6H	29.2	29.8	29.7	30.3	30.8	28.6	29.2	29.1	29.7	
	8H	29.6	30.2	30.1	30.6	31.1	28.9	29.5	29.4	29.9	
Variations with the observer position at spacings:											
S = 1.0H	+ 0.1 / - 0.2					+ 0.2 / - 0.2					
1.5H	+ 0.2 / - 0.3					+ 0.3 / - 0.4					
2.0H	+ 0.1 / - 0.4					+ 0.2 / - 0.5					

CIE Pub.117, 83.60 lm Total Lamp Luminous Flux Correct (8log(F/F0) = -8.6)

C Range: 0 - 360DEG
 C Interval: 30.0DEG
 Test Speed: HIGH
 Temperature:25.3DEG
 Operators:LPC
 Test Date:2021-12-22

γ Range: 0 - 120DEG
 γ Interval: 1.0DEG
 Test System:EVERFINE GO-2000B_V1 SYSTEM V2.0.362
 Humidity:65.0%
 Test Distance:9.200m [K=1.0000]
 Remarks:

UTILIZATION FACTORS TABLE

Test:U:12.00V I:0.3605A P:4.326W PF:1.000 Freq:50.00Hz Lamp Flux:83.5982x1 lm		
NAME: SF15-12V-3528-72-4500-80	TYPE: 硅胶	WEIGHT:
SPEC.:	DIM.: 21mm*11.5mm	SERIAL No.:2021122208
MFR.: OLYMPIA	SUR.:1*0.0115	Shielding Angle:

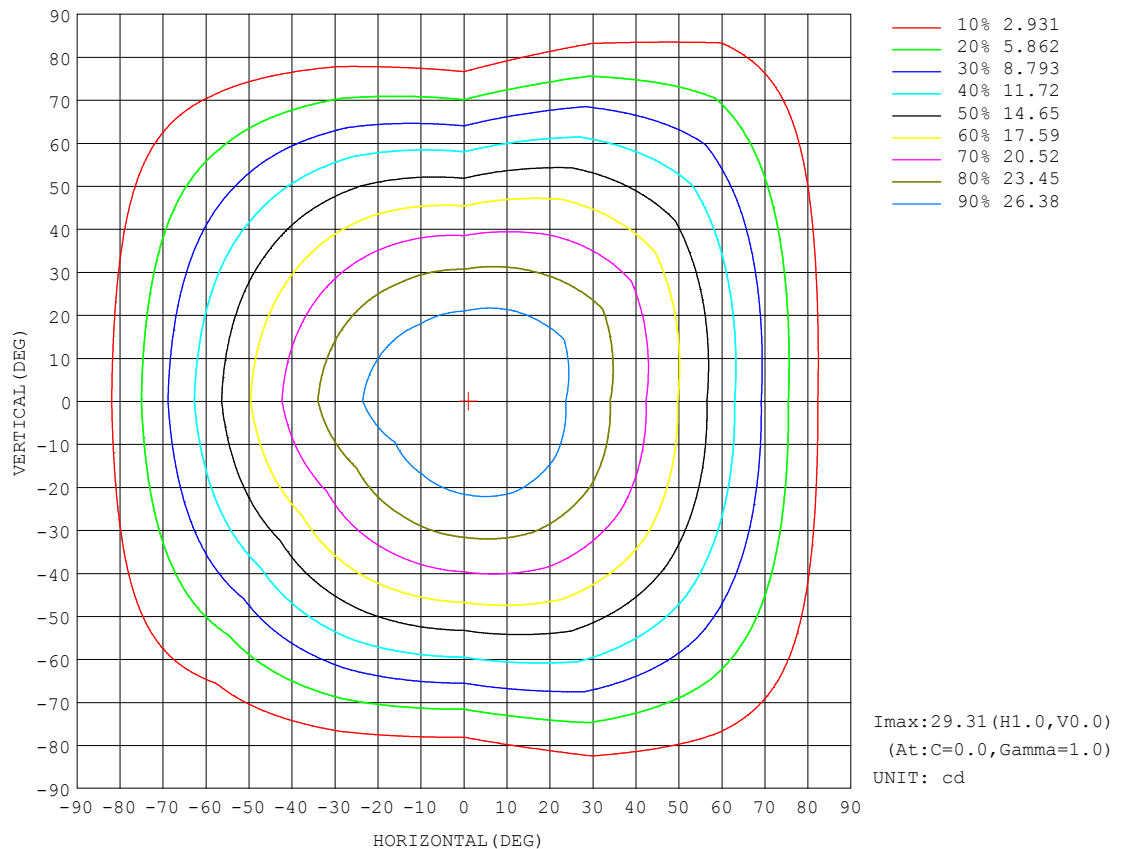
REFLECTANCE										
Ceiling	0.8	0.8	0.8	0.7	0.7	0.7	0.5	0.5	0.5	0
Walls	0.7	0.5	0.3	0.7	0.5	0.3	0.7	0.5	0.3	0
Working plane	0.2	0.2	0.2	0.2	0.2	0.2	0.2	0.2	0.2	0
ROOM INDEX	UTILIZATION FACTORS (PERCENT) $k(RI) \times RCR = 5$									
$k = 0.60$	57	45	38	56	45	38	55	45	38	32
0.80	67	55	48	66	55	48	64	54	47	40
1.00	75	64	57	74	64	56	72	65	56	49
1.25	82	72	65	81	71	64	78	70	63	56
1.50	87	77	70	86	76	70	83	75	69	61
2.00	94	86	79	92	84	78	89	82	77	69
2.50	98	90	84	96	89	83	92	86	81	73
3.00	102	95	89	99	93	88	95	90	85	77
4.00	106	100	95	103	98	94	99	94	91	81
5.00	108	103	99	106	101	97	101	97	94	84
ROOM INDEX	UF (total)									Direct
According to DIN EN 13032-2 2004			Suspended					SHRNOM = 1.25		

C Range: 0 - 360DEG
 C Interval: 30.0DEG
 Test Speed: HIGH
 Temperature: 25.3DEG
 Operators: LPC
 Test Date: 2021-12-22

γ Range: 0 - 120DEG
 γ Interval: 1.0DEG
 Test System: EVERFINE GO-2000B_V1 SYSTEM V2.0.362
 Humidity: 65.0%
 Test Distance: 9.200m [K=1.0000]
 Remarks:

ISOCANDELA DIAGRAM

Test:U:12.00V I:0.3605A P:4.326W PF:1.000 Freq:50.00Hz Lamp Flux:83.5982x1 lm		
NAME: SF15-12V-3528-72-4500-80	TYPE: 硅胶	WEIGHT:
SPEC.:	DIM.: 21mm*11.5mm	SERIAL No.:2021122208
MFR.: OLYMPIA	SUR.:1*0.0115	Shielding Angle:

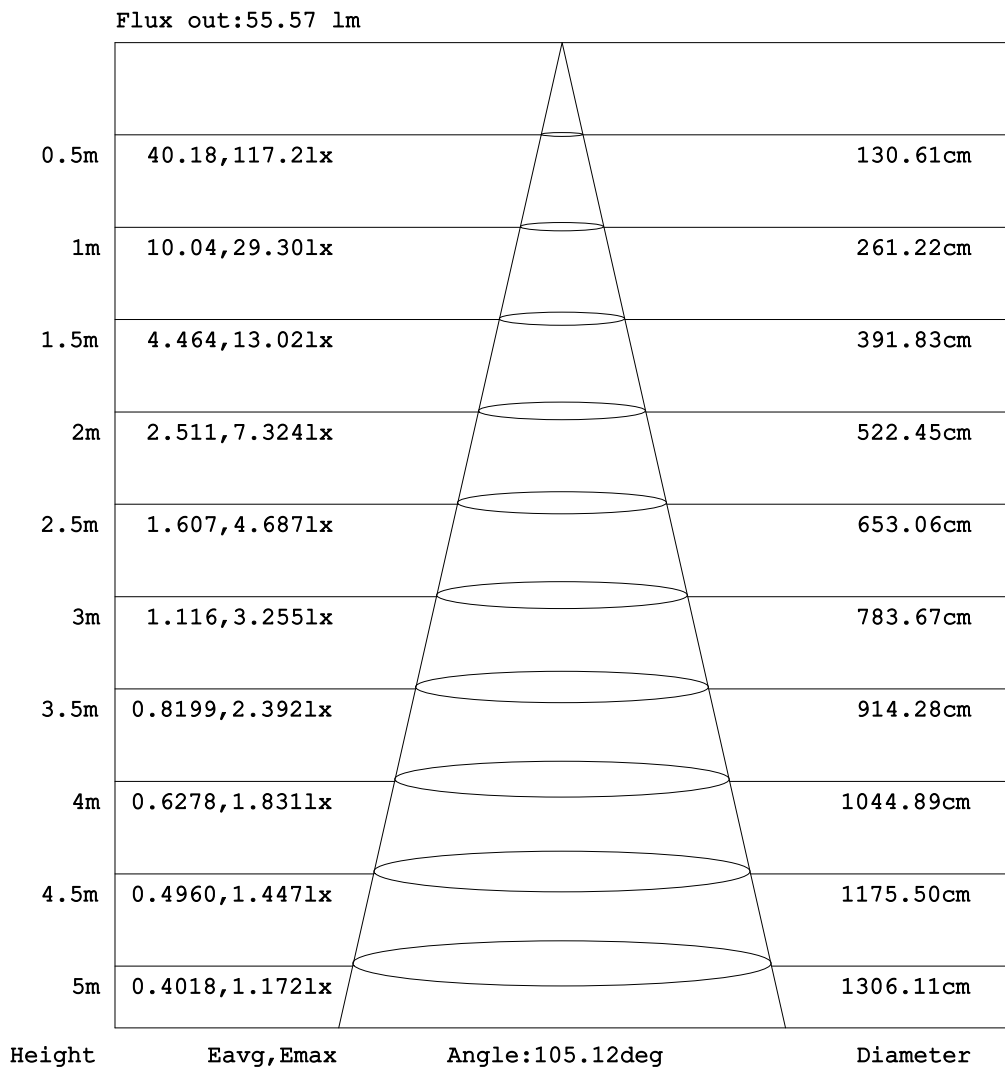


C Range: 0 - 360DEG
C Interval: 30.0DEG
Test Speed: HIGH
Temperature:25.3DEG
Operators:LPC
Test Date:2021-12-22

γ Range: 0 - 120DEG
 γ Interval: 1.0DEG
Test System:EVERFINE GO-2000B_V1 SYSTEM V2.0.362
Humidity:65.0%
Test Distance:9.200m [K=1.0000]
Remarks:

AAI Figure

Test:U:12.00V I:0.3605A P:4.326W PF:1.000 Freq:50.00Hz Lamp Flux:83.5982x1 lm		
NAME: SF15-12V-3528-72-4500-80	TYPE: 硅胶	WEIGHT:
SPEC.:	DIM.: 21mm*11.5mm	SERIAL No.:2021122208
MFR.: OLYMPIA	SUR.:1*0.0115	Shielding Angle:



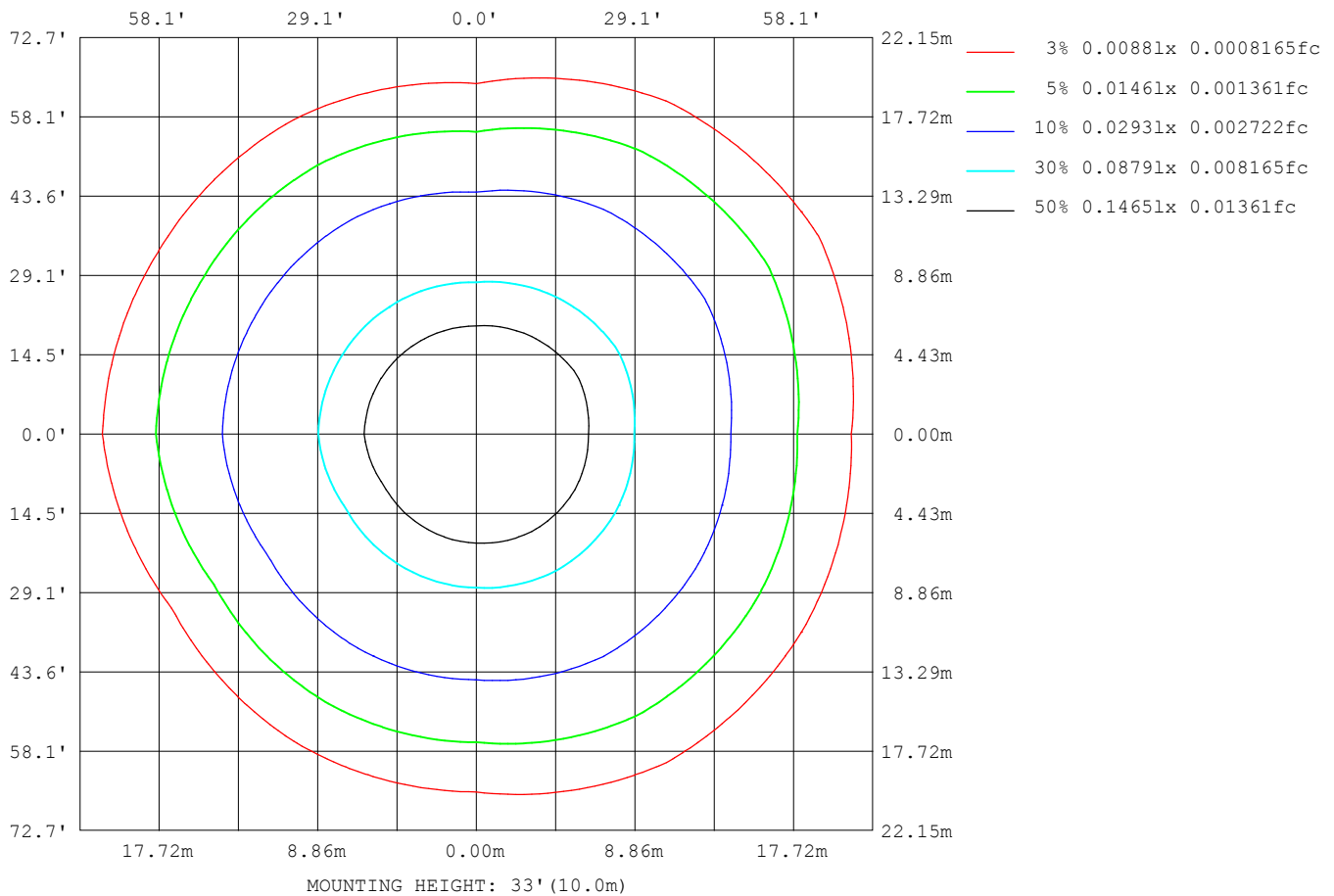
Note: The Curves indicate the illuminated area and the average illumination when the luminaire is at different distance.

C Range: 0 - 360DEG
 C Interval: 30.0DEG
 Test Speed: HIGH
 Temperature: 25.3DEG
 Operators: LPC
 Test Date: 2021-12-22

γ Range: 0 - 120DEG
 γ Interval: 1.0DEG
 Test System: EVERFINE GO-2000B_V1 SYSTEM V2.0.362
 Humidity: 65.0%
 Test Distance: 9.200m [K=1.0000]
 Remarks:

ISOLUX DIAGRAM

Test:U:12.00V I:0.3605A P:4.326W PF:1.000 Freq:50.00Hz Lamp Flux:83.5982x1 lm		
NAME: SF15-12V-3528-72-4500-80	TYPE: 硅胶	WEIGHT:
SPEC.:	DIM.: 21mm*11.5mm	SERIAL No.:2021122208
MFR.: OLYMPIA	SUR.:1*0.0115	Shielding Angle:



C Range: 0 - 360DEG
C Interval: 30.0DEG
Test Speed: HIGH
Temperature:25.3DEG
Operators:LPC
Test Date:2021-12-22

γ Range: 0 - 120DEG
 γ Interval: 1.0DEG
Test System:EVERFINE GO-2000B_V1 SYSTEM V2.0.362
Humidity:65.0%
Test Distance:9.200m [K=1.0000]
Remarks:

LED Avg.L Report

Test:U:12.00V I:0.3605A P:4.326W PF:1.000 Freq:50.00Hz Lamp Flux:83.5982x1 lm		
NAME: SF15-12V-3528-72-4500-80	TYPE:硅胶	WEIGHT:
SPEC.:	DIM.: 21mm*11.5mm	SERIAL No.:2021122208
MFR.: OLYMPIA	SUR.:1*0.0115	Shielding Angle:

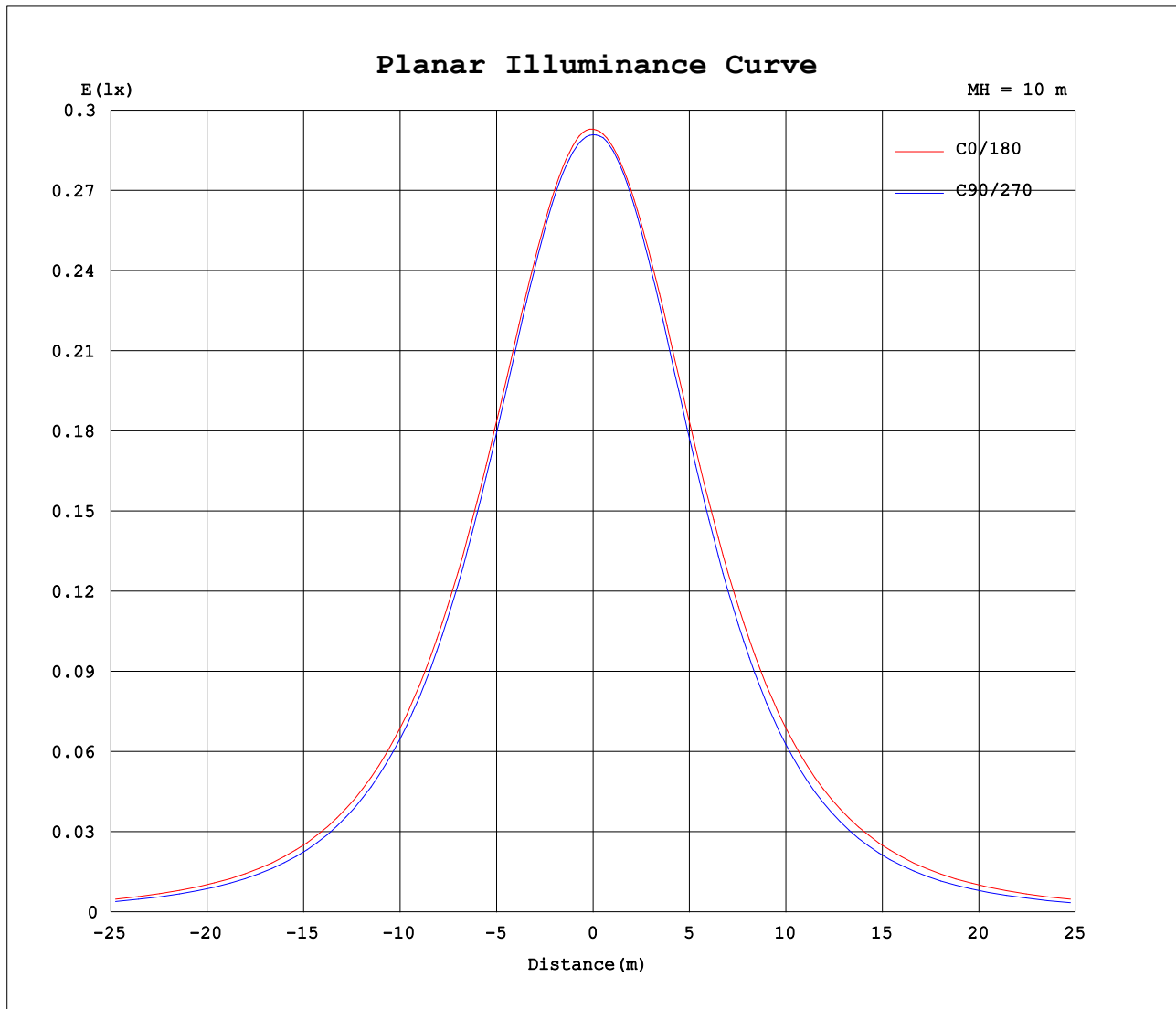
AvgL	cd/m2
L_0~180 (65) av	2198
L_0~180 (75) av	2004
L_0~180 (85) av	1976
L_90~270 (65) av	1786
L_90~270 (75) av	1329
L_90~270 (85) av	378
L_45 (65) av	2179
L_45 (75) av	1993
L_45 (85) av	1975

Standard: GB/T 29293-2012

C Range: 0 - 360DEG
C Interval: 30.0DEG
Test Speed: HIGH
Temperature:25.3DEG
Operators:LPC
Test Date:2021-12-22

γ Range: 0 - 120DEG
γ Interval: 1.0DEG
Test System:EVERFINE GO-2000B_V1 SYSTEM V2.0.362
Humidity:65.0%
Test Distance:9.200m [K=1.0000]
Remarks:

Planar Illuminance Curve



C Range: 0 - 360DEG
C Interval: 30.0DEG
Test Speed: HIGH
Temperature: 25.3DEG
Operators: LPC
Test Date: 2021-12-22

γ Range: 0 - 120DEG
 γ Interval: 1.0DEG
Test System: EVERFINE GO-2000B_V1 SYSTEM V2.0.362
Humidity: 65.0%
Test Distance: 9.200m [K=1.0000]
Remarks:

LUMINOUS DISTRIBUTION INTENSITY DATA

Test:U:12.00V I:0.3605A P:4.326W PF:1.000 Freq:50.00Hz Lamp Flux:83.5982x1 lm		
NAME: SF15-12V-3528-72-4500-80	TYPE: 硅胶	WEIGHT:
SPEC.:	DIM.: 21mm*11.5mm	SERIAL No.:2021122208
MFR.: OLYMPIA	SUR.:1*0.0115	Shielding Angle:

Table--1

UNIT: cd

C (DEG) γ (DEG)	0	30	60	90	120	150	180	210	240	270	300	330						
0	29.3	29.2	29.2	29.1	29.1	29.1	29.3	29.2	29.2	29.1	29.1	29.1						
5	29.2	29.2	29.2	28.9	28.8	28.7	29.1	29.1	28.9	29.0	29.1	29.1						
10	28.8	28.9	28.9	28.5	28.3	28.1	28.7	28.6	28.4	28.5	28.8	29.1						
15	28.1	28.3	28.2	27.8	27.4	27.2	28.1	27.8	27.6	27.7	28.2	28.6						
20	27.2	27.4	27.3	26.8	26.3	26.0	27.2	26.8	26.5	26.6	27.3	27.9						
25	26.1	26.3	26.1	25.5	24.9	24.7	26.0	25.6	25.2	25.3	26.1	26.8						
30	24.7	25.0	24.7	24.0	23.4	23.2	24.7	24.2	23.8	23.7	24.7	25.7						
35	23.1	23.4	23.2	22.3	21.8	21.4	23.1	22.6	22.1	21.9	23.1	24.4						
40	21.4	21.8	21.4	20.4	19.9	19.6	21.4	20.8	20.4	19.9	21.4	22.8						
45	19.5	19.9	19.6	18.3	18.0	17.6	19.5	18.9	18.5	17.8	19.7	21.1						
50	17.5	17.9	17.7	16.2	15.9	15.4	17.4	16.8	16.4	15.5	18.0	19.2						
55	15.3	15.8	15.6	13.9	13.7	13.2	15.3	14.6	14.2	13.1	15.9	17.2						
60	13.1	13.6	13.5	11.5	11.4	10.8	13.0	12.3	11.9	10.7	13.8	15.0						
65	10.7	11.3	11.2	9.06	9.05	8.41	10.6	9.91	9.59	8.30	11.6	12.8						
70	8.38	8.99	8.93	6.64	6.68	6.03	8.23	7.49	7.20	5.89	9.31	10.5						
75	6.07	6.65	6.64	4.29	4.37	3.82	5.87	5.14	4.85	3.62	6.98	8.16						
80	3.85	4.36	4.40	2.16	2.33	2.01	3.67	3.01	2.67	1.59	4.68	5.81						
85	2.04	2.34	2.35	0.53	0.94	0.89	1.92	1.43	1.02	0.23	2.55	3.60						
90	0.95	1.03	0.90	0.24	0.49	0.53	0.79	0.56	0.35	0.12	0.91	1.77						
95	0.44	0.46	0.46	0.26	0.48	0.50	0.35	0.35	0.30	0.12	0.29	0.73						
100	0.33	0.39	0.42	0.29	0.44	0.48	0.28	0.32	0.28	0.13	0.27	0.30						
105	0.30	0.36	0.39	0.33	0.41	0.48	0.22	0.25	0.26	0.19	0.26	0.28						
110	0.31	0.25	0.41	0.34	0.43	0.47	0.15	0.17	0.32	0.19	0.26	0.28						
115	0.35	0.15	0.43	0.35	0.45	0.33	0.09	0.10	0.32	0.20	0.28	0.28						
120	0.38	0.04	0.09	0.10	0.07	0.09	0.03	0.03	0.33	0.06	0.23	0.29						
125	0.00	0.00	0.00	0.00	0.00	0.00	0.00	0.00	0.00	0.00	0.00	0.00						
130	0.00	0.00	0.00	0.00	0.00	0.00	0.00	0.00	0.00	0.00	0.00	0.00						
135	0.00	0.00	0.00	0.00	0.00	0.00	0.00	0.00	0.00	0.00	0.00	0.00						
140	0.00	0.00	0.00	0.00	0.00	0.00	0.00	0.00	0.00	0.00	0.00	0.00						
145	0.00	0.00	0.00	0.00	0.00	0.00	0.00	0.00	0.00	0.00	0.00	0.00						
150	0.00	0.00	0.00	0.00	0.00	0.00	0.00	0.00	0.00	0.00	0.00	0.00						
155	0.00	0.00	0.00	0.00	0.00	0.00	0.00	0.00	0.00	0.00	0.00	0.00						
160	0.00	0.00	0.00	0.00	0.00	0.00	0.00	0.00	0.00	0.00	0.00	0.00						
165	0.00	0.00	0.00	0.00	0.00	0.00	0.00	0.00	0.00	0.00	0.00	0.00						
170	0.00	0.00	0.00	0.00	0.00	0.00	0.00	0.00	0.00	0.00	0.00	0.00						
175	0.00	0.00	0.00	0.00	0.00	0.00	0.00	0.00	0.00	0.00	0.00	0.00						
180	0.00	0.00	0.00	0.00	0.00	0.00	0.00	0.00	0.00	0.00	0.00	0.00						

C Range: 0 - 360DEG
C Interval: 30.0DEG
Test Speed: HIGH
Temperature:25.3DEG
Operators:LPC
Test Date:2021-12-22

γ Range: 0 - 120DEG
γ Interval: 1.0DEG
Test System:EVERFINE GO-2000B_V1 SYSTEM V2.0.362
Humidity:65.0%
Test Distance:9.200m [K=1.0000]
Remarks:

Photometric Data Table [cd]

G/C	0.0	30.0	60.0	90.0	120.0	150.0	180.0	210.0	240.0	270.0
0.0	29.29	29.25	29.17	29.09	29.10	29.06	29.29	29.25	29.17	29.09
3.0	29.29	29.23	29.18	29.03	28.96	28.87	29.23	29.19	29.06	29.09
6.0	29.14	29.14	29.14	28.89	28.72	28.59	29.08	29.00	28.86	28.94
9.0	28.89	28.94	28.95	28.65	28.38	28.20	28.84	28.71	28.56	28.68
12.0	28.55	28.65	28.65	28.28	27.93	27.71	28.49	28.32	28.13	28.26
15.0	28.11	28.28	28.24	27.81	27.38	27.16	28.08	27.83	27.59	27.72
18.0	27.59	27.80	27.71	27.22	26.75	26.52	27.56	27.30	26.99	27.13
21.0	26.99	27.20	27.11	26.53	26.02	25.78	26.97	26.61	26.26	26.36
24.0	26.30	26.56	26.39	25.79	25.22	24.99	26.28	25.91	25.51	25.58
27.0	25.53	25.79	25.61	24.90	24.37	24.12	25.50	25.06	24.65	24.62
30.0	24.69	24.98	24.74	24.01	23.44	23.16	24.67	24.22	23.75	23.67
33.0	23.77	24.09	23.81	22.99	22.45	22.16	23.76	23.27	22.80	22.60
36.0	22.79	23.13	22.82	21.92	21.42	21.08	22.78	22.26	21.81	21.50
39.0	21.75	22.11	21.80	20.78	20.32	19.93	21.75	21.20	20.74	20.30
42.0	20.64	21.05	20.73	19.60	19.18	18.79	20.64	20.06	19.61	19.05
45.0	19.49	19.94	19.62	18.35	17.99	17.56	19.48	18.89	18.45	17.76
48.0	18.28	18.75	18.46	17.06	16.75	16.26	18.27	17.64	17.23	16.41
51.0	17.04	17.54	17.27	15.72	15.46	14.97	17.01	16.37	15.98	15.02
54.0	15.76	16.23	16.06	14.33	14.14	13.59	15.71	15.05	14.67	13.63
57.0	14.44	14.96	14.78	12.94	12.76	12.24	14.37	13.68	13.33	12.19
60.0	13.08	13.61	13.49	11.50	11.40	10.80	12.99	12.26	11.95	10.74
63.0	11.70	12.22	12.14	10.03	9.987	9.343	11.58	10.87	10.55	9.283
66.0	10.27	10.87	10.75	8.580	8.574	7.936	10.16	9.413	9.127	7.815
69.0	8.860	9.444	9.378	7.102	7.136	6.499	8.710	7.955	7.679	6.377
72.0	7.483	8.036	8.012	5.674	5.740	5.111	7.267	6.553	6.257	4.970
75.0	6.066	6.645	6.644	4.288	4.367	3.821	5.866	5.136	4.846	3.623
78.0	4.709	5.243	5.272	2.977	3.090	2.651	4.509	3.813	3.499	2.351
81.0	3.451	3.921	3.964	1.771	1.973	1.726	3.273	2.642	2.278	1.239
84.0	2.346	2.710	2.724	0.7863	1.144	1.064	2.223	1.687	1.279	0.3847
87.0	1.525	1.712	1.647	0.2712	0.6447	0.6325	1.395	0.9872	0.6068	0.1411
90.0	0.9465	1.034	0.9017	0.2438	0.4877	0.5348	0.7876	0.5589	0.3521	0.1198
93.0	0.5889	0.6223	0.5435	0.2514	0.4792	0.5161	0.4315	0.3672	0.3097	0.1182
96.0	0.3926	0.4069	0.4424	0.2664	0.4689	0.4974	0.3356	0.3468	0.2979	0.1167
99.0	0.3368	0.3920	0.4257	0.2865	0.4484	0.4838	0.2969	0.3318	0.2860	0.1255
102.0	0.2969	0.4021	0.4090	0.3217	0.4279	0.4805	0.2582	0.2885	0.2742	0.1506
105.0	0.2965	0.3598	0.3922	0.3272	0.4073	0.4772	0.2195	0.2452	0.2614	0.1909
108.0	0.3065	0.2963	0.4028	0.3327	0.4222	0.4740	0.1807	0.2020	0.2917	0.1885
111.0	0.3215	0.2328	0.4134	0.3382	0.4372	0.4707	0.1420	0.1587	0.3183	0.1923
114.0	0.3417	0.1693	0.4261	0.3468	0.4372	0.3757	0.1033	0.1154	0.3227	0.1960
117.0	0.3568	0.1058	0.3474	0.2513	0.2981	0.2348	0.0645	0.0721	0.3272	0.1436
120.0	0.3769	0.0423	0.0868	0.1005	0.0745	0.0939	0.0258	0.0289	0.3317	0.0574
G/C	300.0	330.0								
0.0	29.10	29.06								
3.0	29.10	29.17								
6.0	29.04	29.13								
9.0	28.89	29.09								
12.0	28.59	28.94								
15.0	28.18	28.64								
18.0	27.65	28.21								
21.0	27.05	27.67								
24.0	26.35	27.06								
27.0	25.54	26.41								
30.0	24.66	25.70								
33.0	23.72	24.94								
36.0	22.72	24.09								
39.0	21.74	23.15								
42.0	20.75	22.16								
45.0	19.74	21.10								
48.0	18.70	19.98								
51.0	17.57	18.81								
54.0	16.36	17.60								
57.0	15.10	16.35								
60.0	13.82	15.03								
63.0	12.49	13.72								
66.0	11.15	12.36								
69.0	9.765	10.98								
72.0	8.373	9.569								
75.0	6.977	8.157								
78.0	5.594	6.729								
81.0	4.237	5.366								
84.0	2.956	4.020								
87.0	1.796	2.783								
90.0	0.9126	1.772								

C Range: 0 - 360DEG
 C Interval: 30.0DEG
 Test Speed: HIGH
 Temperature: 25.3DEG
 Operators: LPC
 Test Date: 2021-12-22

γ Range: 0 - 120DEG
 γ Interval: 1.0DEG
 Test System: EVERFINE GO-2000B_V1 SYSTEM V2.0.362
 Humidity: 65.0%
 Test Distance: 9.200m [K=1.0000]
 Remarks:

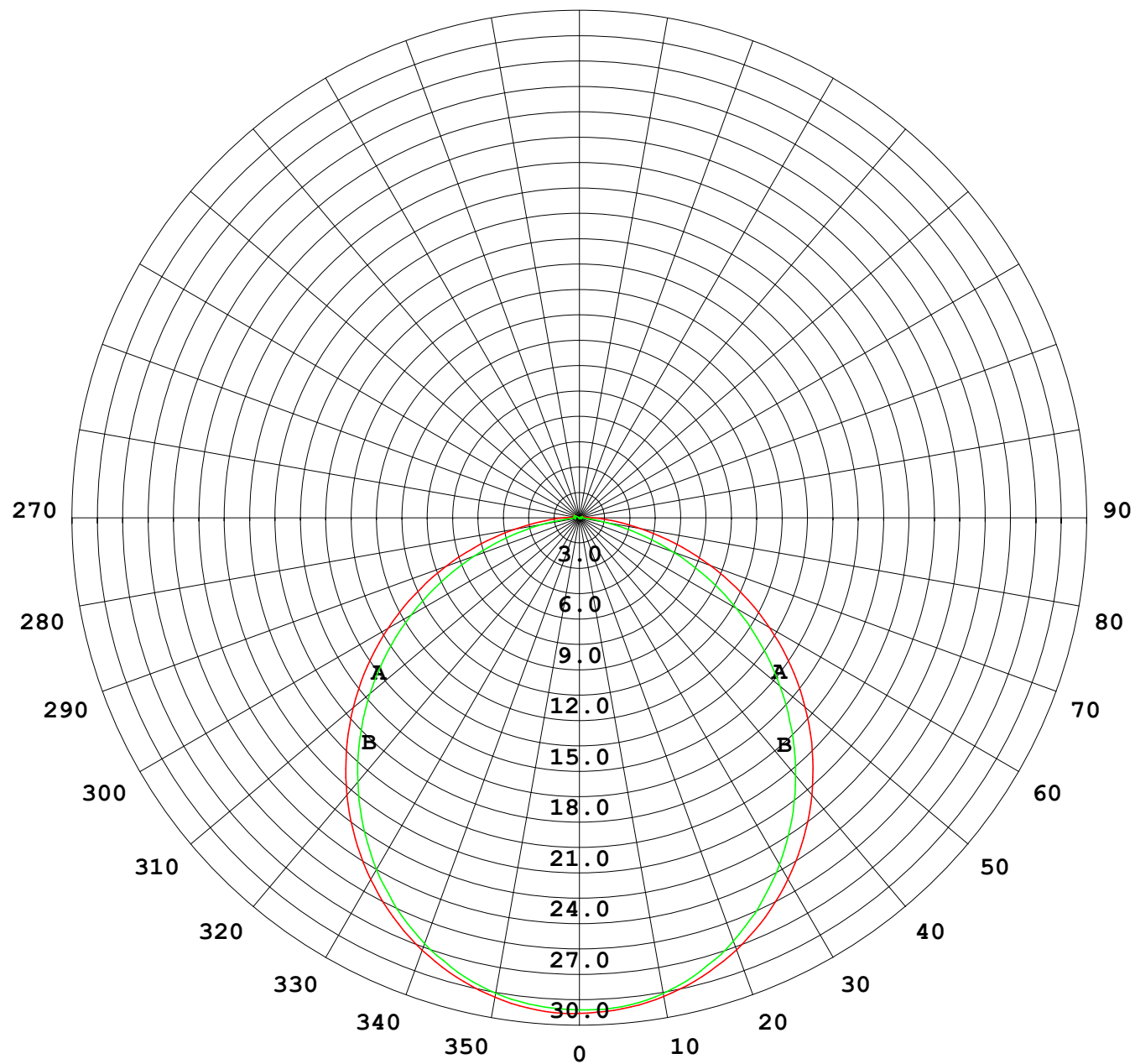
Photometric Data Table [cd]

93.0	0.4363	1.057
96.0	0.2832	0.6143
99.0	0.2737	0.3625
102.0	0.2643	0.2859
105.0	0.2565	0.2837
108.0	0.2513	0.2815
111.0	0.2651	0.2793
114.0	0.2778	0.2771
117.0	0.2763	0.2804
120.0	0.2312	0.2865

C Range: 0 - 360DEG
C Interval: 30.0DEG
Test Speed: HIGH
Temperature: 25.3DEG
Operators: LPC
Test Date: 2021-12-22

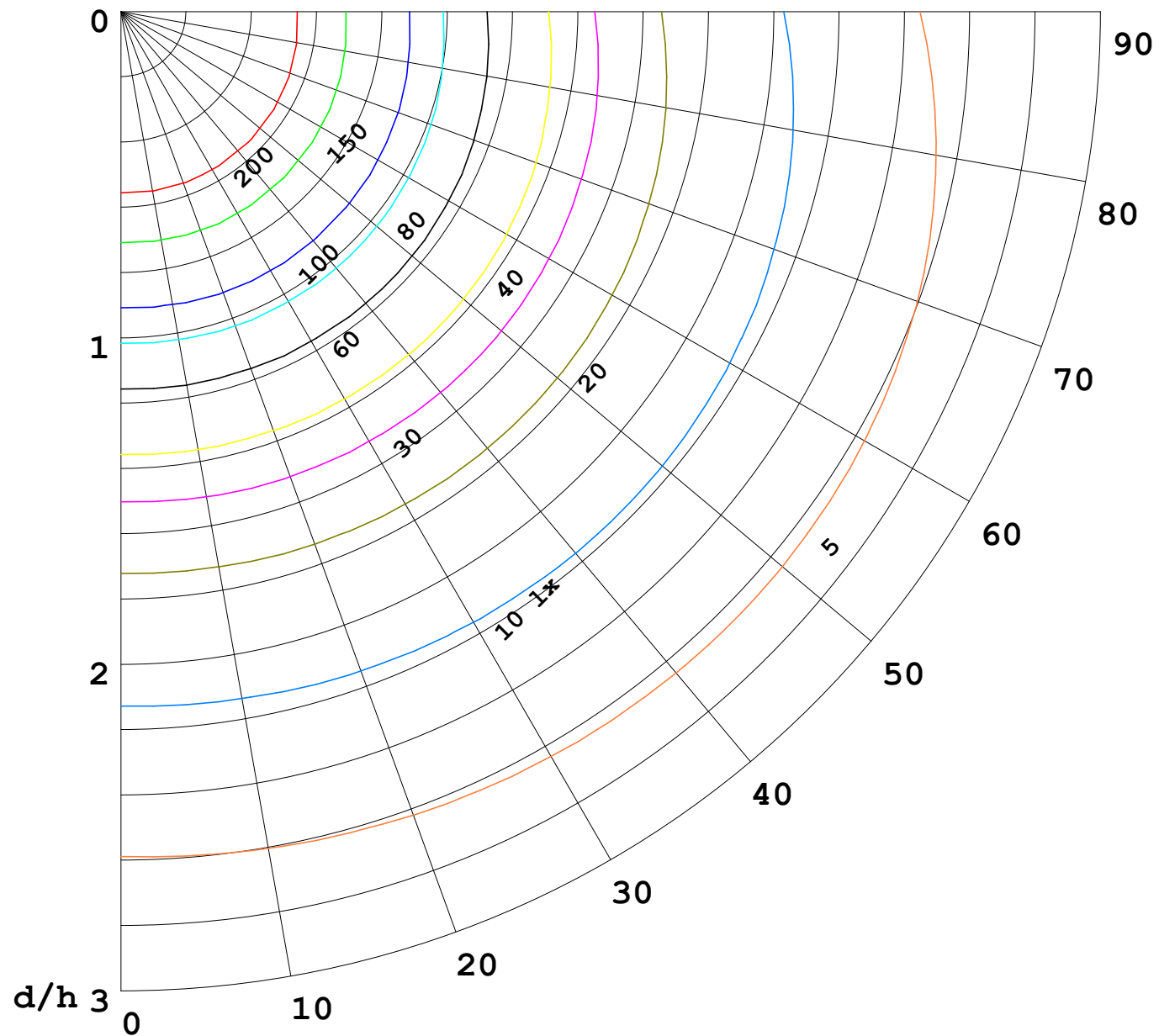
γ Range: 0 - 120DEG
γ Interval: 1.0DEG
Test System: EVERFINE GO-2000B_V1 SYSTEM V2.0.362
Humidity: 65.0%
Test Distance: 9.200m [K=1.0000]
Remarks:

I (cd)



1000 lm

$\kappa = 1$



F = 5000 lm
 K = 0.7
 Hcc = 0.0 m
 Hfc = 0.0 m
 Eave = 100 lx

	Pcc	Pw	Pfc
—	70	50	30
—	50	30	20

