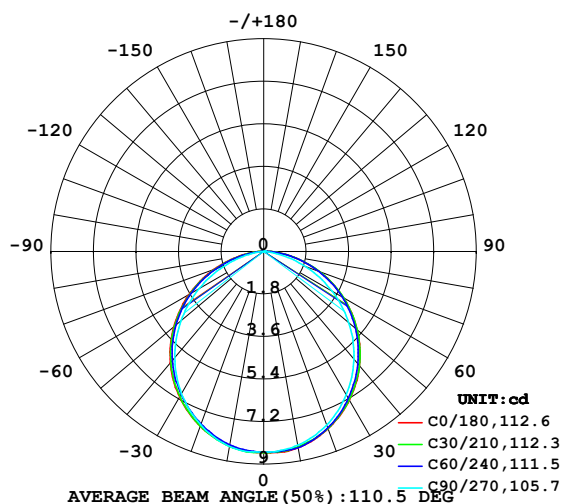


LUMINAIRE PHOTOMETRIC TEST REPORT

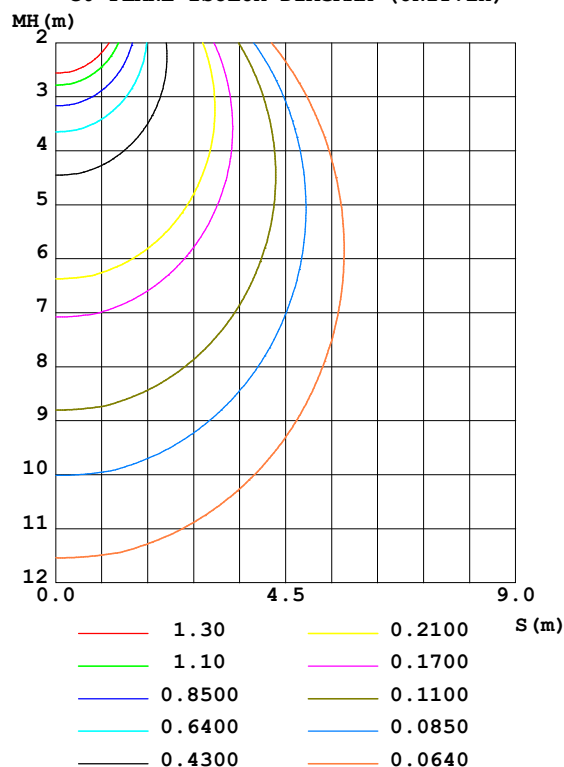
Test:U:12.00V I:0.3236A P:3.883W PF:1.000 Freq:50.00Hz Lamp Flux:24.1226x1 lm		
NAME: SF15-12V-3528-72-R	TYPE: 硅胶	WEIGHT:
SPEC.:	DIM.: 21mm*11.5mm	SERIAL No.:2021122210
MFR.: OLYMPIA	SUR.:1*0.0115	Shielding Angle:

DATA OF LAMP		PHOTOMETRIC DATA				Eff: 6.21 lm/W
MODEL	3528	I _{max} (cd)	8.529	S/MH (C0/180)	1.24	
NOMINAL POWER (W)	5	LOR (%)	100.0	S/MH (C90/270)	1.22	
RATED VOLTAGE (V)	12	TOTAL FLUX (lm)	24.123	η UP, DN (C0-180)	0.5, 49.5	
NOMINAL FLUX (lm)	24.1226	CIE CLASS	DIRECT	η UP, DN (C180-360)	0.3, 49.7	
LAMPS INSIDE	1	η up (%)	0.8	CIBSE SHR NOM	1.25	
TEST VOLTAGE (V)	12	η down (%)	99.2	CIBSE SHR MAX	1.35	

LUMINOUS INTENSITY DISTRIBUTION DIAGRAM



C0 PLANE ISOLUX DIAGRAM (UNIT:lx)



C Range: 0 - 360DEG
 C Interval: 30.0DEG
 Test Speed: HIGH
 Temperature: 25.3DEG
 Operators: LPC
 Test Date: 2021-12-22

γ Range: 0 - 120DEG
 γ Interval: 1.0DEG
 Test System: EVERFINE GO-2000B_V1 SYSTEM V2.0.362
 Humidity: 65.0%
 Test Distance: 9.200m [K=1.0000]
 Remarks:

ZONAL FLUX DIAGRAM

ZONAL FLUX DIAGRAM:

γ	C0	C45	C90	C135	C180	C225	C270	C315	γ	Φ zone	Φ total	%lum, lamp
10	8.428	8.418	8.327	8.272	8.347	8.343	8.373	8.411	0- 10	0.8053	0.8053	3.34,3.34
20	7.982	7.956	7.809	7.732	7.870	7.815	7.806	7.956	10- 20	2.300	3.105	12.9,12.9
30	7.258	7.210	6.990	6.938	7.116	7.036	6.957	7.219	20- 30	3.460	6.565	27.2,27.2
40	6.314	6.250	5.949	5.935	6.150	6.066	5.856	6.287	30- 40	4.146	10.71	44.4,44.4
50	5.168	5.126	4.693	4.742	4.979	4.890	4.565	5.219	40- 50	4.280	14.99	62.1,62.1
60	3.891	3.862	3.341	3.440	3.657	3.583	3.157	3.983	50- 60	3.851	18.84	78.1,78.1
70	2.524	2.510	1.883	2.023	2.250	2.158	1.710	2.646	60- 70	2.923	21.76	90.2,90.2
80	1.187	1.173	0.5518	0.7338	0.9287	0.8291	0.4282	1.292	70- 80	1.661	23.43	97.1,97.1
90	0.2870	0.2111	0.0402	0.1130	0.1304	0.0881	0	0.2388	80- 90	0.4992	23.92	99.2,99.2
100	0.0705	0.0729	0.0553	0.0779	0.0603	0.0503	0	0.0428	90-100	0.0853	24.01	99.5,99.5
110	0.0554	0.0653	0.0553	0.0528	0.0603	0.0578	0.0050	0.0452	100-110	0.0575	24.07	99.8,99.8
120	0.0553	0.0477	0.0553	0.0628	0.0603	0.0628	0.0251	0.0477	110-120	0.0528	24.12	100,100
130	0	0	0	0	0	0	0	0	120-130	0.0025	24.12	100,100
140	0	0	0	0	0	0	0	0	130-140	0	24.12	100,100
150	0	0	0	0	0	0	0	0	140-150	0	24.12	100,100
160	0	0	0	0	0	0	0	0	150-160	0	24.12	100,100
170	0	0	0	0	0	0	0	0	160-170	0	24.12	100,100
180	0	0	0	0	0	0	0	0	170-180	0	24.12	100,100
DEG	LUMINOUS INTENSITY:cd									UNIT:lm		

Conical surface Flux(90deg): 12.87 lm

%lum = 53.4%

%lamp = 53.4%

Conical surface Flux(120deg): 18.842 lm

%lum = 78.1%

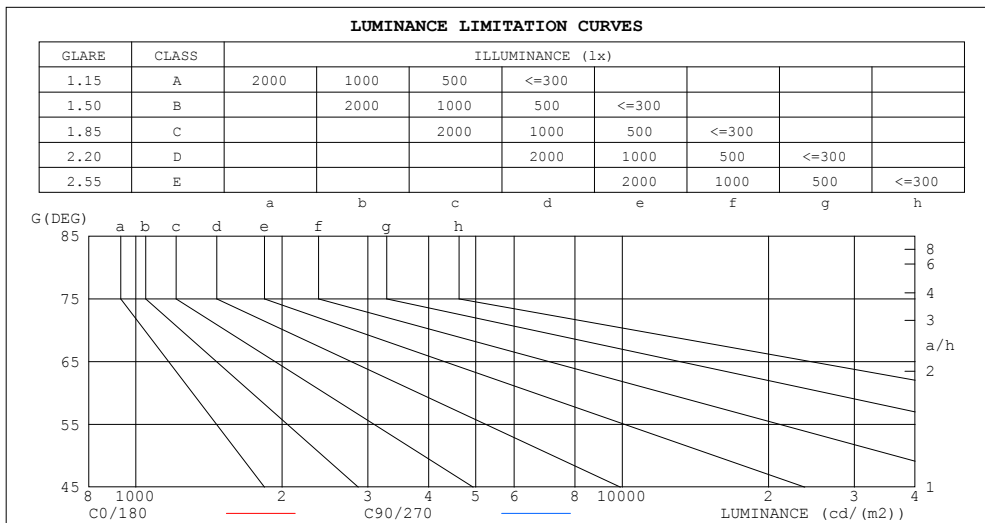
%lamp = 78.1%

C Range: 0 - 360DEG
 C Interval: 30.0DEG
 Test Speed: HIGH
 Temperature:25.3DEG
 Operators:LPC
 Test Date:2021-12-22

γ Range: 0 - 120DEG
 γ Interval: 1.0DEG
 Test System:EVERFINE GO-2000B_V1 SYSTEM V2.0.362
 Humidity:65.0%
 Test Distance:9.200m [K=1.0000]
 Remarks:

LUMINANCE LIMITATION CURVES

Test:U:12.00V I:0.3236A P:3.883W PF:1.000 Freq:50.00Hz Lamp Flux:24.1226x1 lm		
NAME: SF15-12V-3528-72-R	TYPE: 硅胶	WEIGHT:
SPEC.:	DIM.: 21mm*11.5mm	SERIAL No.:2021122210
MFR.: OLYMPIA	SUR.:1*0.0115	Shielding Angle:



LUMINANCE cd/(m2)		
G (DEG)	C0/180	C90/270
85	633	70
80	595	276
75	615	403
70	642	479
65	661	538
60	677	581
55	689	609
50	699	635
45	708	658

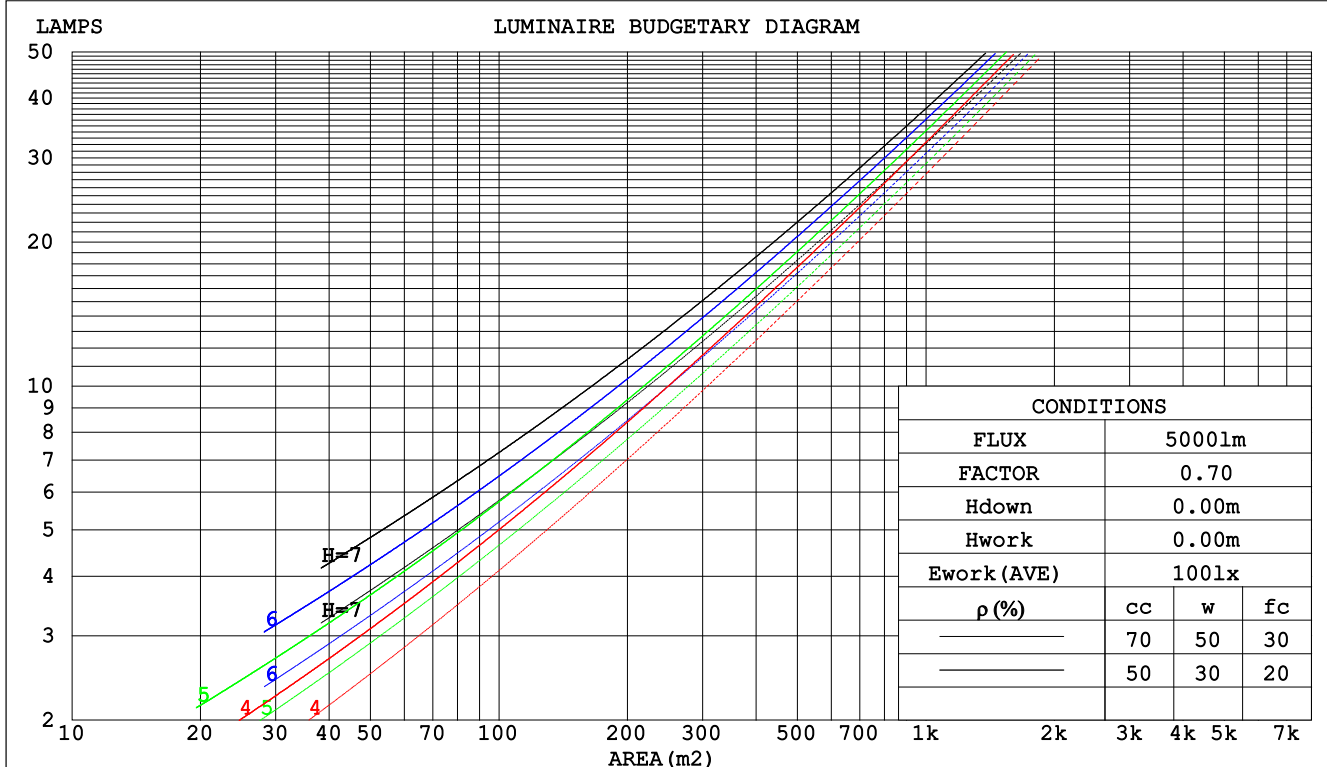
C Range: 0 - 360DEG
C Interval: 30.0DEG
Test Speed: HIGH
Temperature:25.3DEG
Operators:LPC
Test Date:2021-12-22

γ Range: 0 - 120DEG
γ Interval: 1.0DEG
Test System:EVERFINE GO-2000B_V1 SYSTEM V2.0.362
Humidity:65.0%
Test Distance:9.200m [K=1.0000]
Remarks:

CU AND LUMINAIRE BUDGETARY ESTIMATE DIAGRAM

Test:U:12.00V I:0.3236A P:3.883W PF:1.000 Freq:50.00Hz Lamp Flux:24.1226x1 lm		
NAME: SF15-12V-3528-72-R	TYPE:硅胶	WEIGHT:
SPEC.:	DIM.: 21mm*11.5mm	SERIAL No.:2021122210
MFR.: OLYMPIA	SUR.:1*0.0115	Shielding Angle:

pcc	80%			70%			50%			30%			10%			0
pw	50%	30%	10%	50%	30%	10%	50%	30%	10%	50%	30%	10%	50%	30%	10%	0
pfc	20%			20%			20%			20%			20%			0
RCR	RCR:Room Cavity Ratio						Coefficients of Utilization(CU)									
0.0	1.19	1.19	1.19	1.16	1.16	1.16	1.11	1.11	1.11	1.06	1.06	1.06	1.01	1.01	1.01	.99
1.0	1.04	.99	.95	1.01	.97	.94	.97	.94	.91	.93	.90	.88	.89	.87	.85	.83
2.0	.90	.83	.78	.88	.82	.77	.85	.79	.75	.81	.77	.73	.78	.74	.71	.69
3.0	.79	.71	.64	.78	.70	.64	.74	.68	.63	.72	.66	.61	.69	.64	.60	.58
4.0	.70	.61	.55	.69	.61	.54	.66	.59	.53	.64	.58	.52	.61	.56	.52	.49
5.0	.63	.54	.47	.61	.53	.47	.59	.52	.46	.57	.51	.45	.55	.50	.45	.43
6.0	.56	.47	.41	.55	.47	.41	.54	.46	.40	.52	.45	.40	.50	.44	.39	.37
7.0	.51	.42	.36	.50	.42	.36	.49	.41	.36	.47	.40	.35	.46	.40	.35	.33
8.0	.47	.38	.32	.46	.38	.32	.45	.37	.32	.43	.37	.32	.42	.36	.31	.29
9.0	.43	.35	.29	.42	.34	.29	.41	.34	.29	.40	.33	.29	.39	.33	.28	.26
10.0	.40	.32	.26	.39	.31	.26	.38	.31	.26	.37	.30	.26	.36	.30	.26	.24



C Range: 0 - 360DEG
 C Interval: 30.0DEG
 Test Speed: HIGH
 Temperature:25.3DEG
 Operators:LPC
 Test Date:2021-12-22

γ Range: 0 - 120DEG
 γ Interval: 1.0DEG
 Test System:EVERFINE GO-2000B_V1 SYSTEM V2.0.362
 Humidity:65.0%
 Test Distance:9.200m [K=1.0000]
 Remarks:

WEC AND CCEC

Test:U:12.00V I:0.3236A P:3.883W PF:1.000 Freq:50.00Hz Lamp Flux:24.1226x1 lm		
NAME: SF15-12V-3528-72-R	TYPE: 硅胶	WEIGHT:
SPEC.:	DIM.: 21mm*11.5mm	SERIAL No.:2021122210
MFR.: OLYMPIA	SUR.:1*0.0115	Shielding Angle:

pcc	80%			70%			50%			30%			10%			0	
pw	50%	30%	10%	50%	30%	10%	50%	30%	10%	50%	30%	10%	50%	30%	10%	0	
pfc	20%			20%			20%			20%			20%			0	
RCR	RCR:Room Cavity Ratio						Wall Exitance Coefficients(WEC)										
0.0																	
1.0	.311	.177	.056	.303	.173	.055	.290	.166	.053	.277	.160	.051	.265	.154	.050		
2.0	.292	.160	.049	.285	.157	.048	.273	.152	.047	.262	.147	.046	.251	.142	.045		
3.0	.270	.143	.043	.264	.141	.043	.253	.137	.042	.243	.133	.041	.234	.130	.040		
4.0	.249	.129	.038	.244	.127	.038	.234	.124	.037	.225	.121	.036	.217	.118	.036		
5.0	.230	.117	.034	.225	.116	.034	.217	.113	.033	.209	.110	.033	.202	.108	.032		
6.0	.213	.107	.031	.209	.106	.030	.202	.103	.030	.194	.101	.030	.188	.099	.029		
7.0	.198	.098	.028	.195	.097	.028	.188	.095	.027	.182	.093	.027	.176	.091	.027		
8.0	.185	.091	.025	.182	.090	.025	.176	.088	.025	.170	.086	.025	.165	.085	.025		
9.0	.174	.084	.023	.171	.083	.023	.165	.082	.023	.160	.080	.023	.155	.079	.023		
10.0	.163	.078	.022	.161	.078	.022	.156	.076	.021	.151	.075	.021	.147	.074	.021		

pcc	80%			70%			50%			30%			10%			0
pw	50%	30%	10%	50%	30%	10%	50%	30%	10%	50%	30%	10%	50%	30%	10%	0
pfc	20%			20%			20%			20%			20%			0
RCR	RCR:Room Cavity Ratio						Ceiling Cavity Exitance Coefficients(CCEC)									
0.0	.197	.197	.197	.168	.168	.168	.115	.115	.115	.066	.066	.066	.021	.021	.021	
1.0	.187	.162	.141	.160	.139	.121	.109	.096	.084	.063	.056	.049	.020	.018	.016	
2.0	.179	.138	.104	.153	.119	.090	.105	.082	.063	.060	.048	.037	.019	.015	.012	
3.0	.171	.121	.081	.146	.104	.070	.101	.072	.049	.058	.042	.029	.019	.014	.009	
4.0	.163	.107	.065	.140	.093	.056	.096	.065	.040	.056	.038	.023	.018	.012	.008	
5.0	.156	.097	.054	.134	.084	.047	.092	.059	.033	.053	.034	.020	.017	.011	.006	
6.0	.149	.089	.046	.128	.077	.040	.088	.054	.028	.051	.032	.017	.016	.010	.006	
7.0	.142	.082	.040	.122	.071	.035	.084	.050	.025	.049	.029	.015	.016	.010	.005	
8.0	.135	.076	.035	.116	.066	.031	.081	.046	.022	.047	.027	.013	.015	.009	.004	
9.0	.129	.071	.032	.111	.062	.028	.077	.043	.020	.045	.026	.012	.015	.008	.004	
10.0	.124	.067	.029	.106	.058	.025	.074	.041	.018	.043	.024	.011	.014	.008	.004	

C Range: 0 - 360DEG
 C Interval: 30.0DEG
 Test Speed: HIGH
 Temperature:25.3DEG
 Operators:LPC
 Test Date:2021-12-22

γ Range: 0 - 120DEG
 γ Interval: 1.0DEG
 Test System:EVERFINE GO-2000B_V1 SYSTEM V2.0.362
 Humidity:65.0%
 Test Distance:9.200m [K=1.0000]
 Remarks:

UGR(Unified Glare Rating) Table

Test:U:12.00V I:0.3236A P:3.883W PF:1.000 Freq:50.00Hz Lamp Flux:24.1226x1 lm										
NAME: SF15-12V-3528-72-R					TYPE: 硅胶			WEIGHT:		
SPEC.:					DIM.: 21mm*11.5mm			SERIAL No.:2021122210		
MFR.: OLYMPIA					SUR.:1*0.0115			Shielding Angle:		
ceiling/cavity	0.7	0.7	0.5	0.5	0.3	0.7	0.7	0.5	0.5	0.3
walls	0.5	0.3	0.5	0.3	0.3	0.5	0.3	0.5	0.3	0.3
working plane	0.2	0.2	0.2	0.2	0.2	0.2	0.2	0.2	0.2	0.2
Room dimensions	Viewed crosswise					Viewed endwise				
x = 2H y = 2H	24.7	26.2	24.9	26.4	26.6	24.2	25.7	24.5	26.0	26.2
3H	26.3	27.7	26.6	27.9	28.2	25.6	27.0	25.9	27.2	27.5
4H	27.0	28.3	27.3	28.6	28.8	26.0	27.4	26.4	27.6	27.9
6H	27.5	28.8	27.9	29.1	29.3	26.3	27.5	26.6	27.8	28.1
8H	27.7	28.9	28.1	29.2	29.5	26.3	27.5	26.7	27.8	28.1
12H	27.9	29.0	28.2	29.3	29.7	26.3	27.4	26.6	27.7	28.1
4H 2H	25.3	26.6	25.6	26.9	27.2	25.0	26.3	25.3	26.6	26.8
3H	27.1	28.3	27.5	28.6	28.9	26.6	27.7	26.9	28.1	28.4
4H	27.9	29.0	28.3	29.3	29.7	27.2	28.3	27.6	28.6	29.0
6H	28.6	29.6	29.0	29.9	30.3	27.6	28.5	28.0	28.9	29.3
8H	28.9	29.8	29.3	30.1	30.5	27.7	28.5	28.1	28.9	29.3
12H	29.1	29.9	29.5	30.3	30.7	27.7	28.5	28.1	28.9	29.3
8H 4H	28.2	29.1	28.7	29.5	29.9	27.6	28.5	28.0	28.9	29.3
6H	29.1	29.8	29.5	30.2	30.7	28.2	28.9	28.7	29.4	29.8
8H	29.5	30.1	29.9	30.5	31.0	28.4	29.0	28.9	29.5	30.0
12H	29.8	30.3	30.3	30.8	31.3	28.5	29.0	29.0	29.5	30.0
12H 4H	28.3	29.1	28.7	29.5	29.9	27.6	28.5	28.1	28.9	29.3
6H	29.2	29.8	29.6	30.3	30.7	28.3	29.0	28.8	29.4	29.9
8H	29.6	30.1	30.1	30.6	31.1	28.6	29.1	29.1	29.6	30.1
Variations with the observer position at spacings:										
S = 1.0H	+ 0.1 / - 0.2					+ 0.2 / - 0.2				
1.5H	+ 0.2 / - 0.3					+ 0.2 / - 0.4				
2.0H	+ 0.1 / - 0.3					+ 0.2 / - 0.5				

CIE Pub.117, 24.12 lm Total Lamp Luminous Flux Correct (8log(F/F0) = -12.9)

C Range: 0 - 360DEG
C Interval: 30.0DEG
Test Speed: HIGH
Temperature:25.3DEG
Operators:LPC
Test Date:2021-12-22

γ Range: 0 - 120DEG
γ Interval: 1.0DEG
Test System:EVERFINE GO-2000B_V1 SYSTEM V2.0.362
Humidity:65.0%
Test Distance:9.200m [K=1.0000]
Remarks:

UTILIZATION FACTORS TABLE

Test:U:12.00V I:0.3236A P:3.883W PF:1.000 Freq:50.00Hz Lamp Flux:24.1226x1 lm		
NAME: SF15-12V-3528-72-R	TYPE: 硅胶	WEIGHT:
SPEC.:	DIM.: 21mm*11.5mm	SERIAL No.:2021122210
MFR.: OLYMPIA	SUR.:1*0.0115	Shielding Angle:

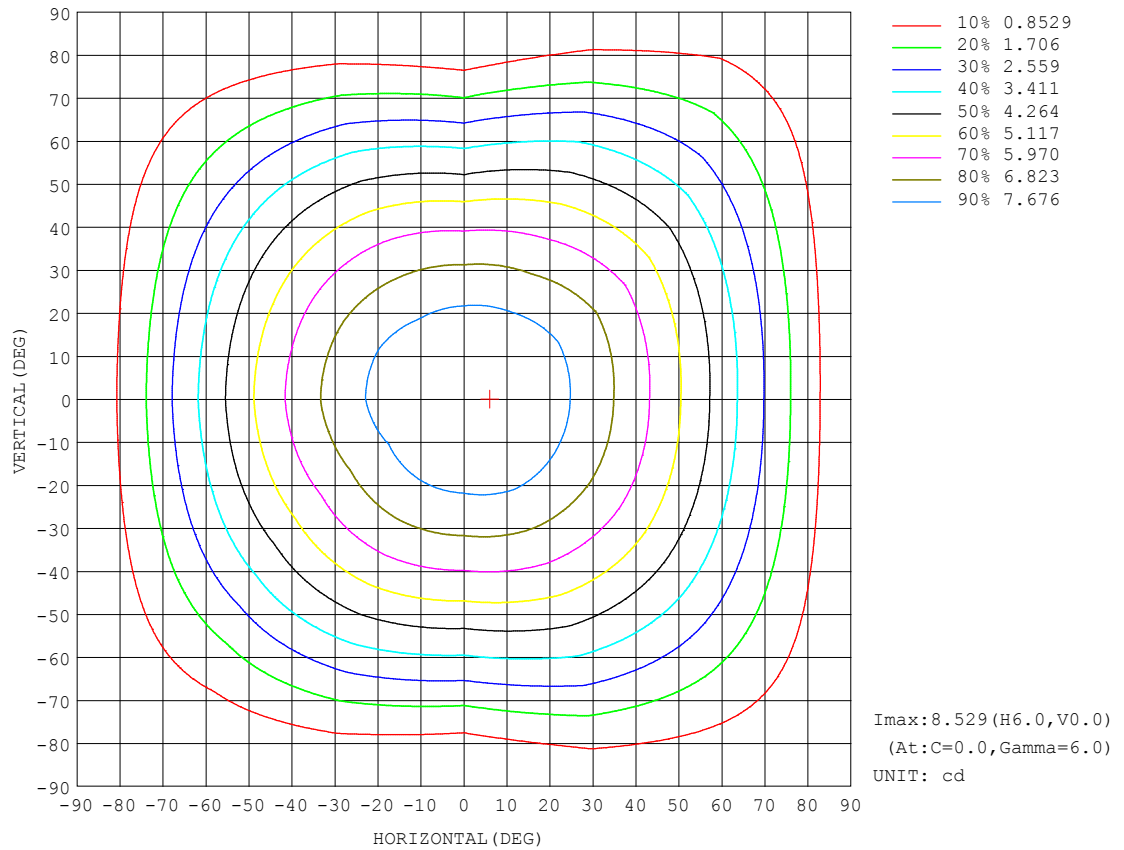
REFLECTANCE										
Ceiling	0.8	0.8	0.8	0.7	0.7	0.7	0.5	0.5	0.5	0
Walls	0.7	0.5	0.3	0.7	0.5	0.3	0.7	0.5	0.3	0
Working plane	0.2	0.2	0.2	0.2	0.2	0.2	0.2	0.2	0.2	0
ROOM INDEX	UTILIZATION FACTORS (PERCENT) $k(RI) \times RCR = 5$									
$k = 0.60$	57	46	39	57	45	39	55	45	38	32
0.80	67	56	48	66	55	48	64	54	48	41
1.00	76	65	57	75	64	57	72	65	56	49
1.25	83	72	65	81	72	65	79	70	64	56
1.50	88	78	71	86	77	70	83	75	69	62
2.00	95	86	80	93	85	79	89	82	77	69
2.50	99	91	85	96	89	84	93	87	82	73
3.00	102	95	89	100	93	88	96	90	86	77
4.00	106	100	95	103	98	94	99	95	91	82
5.00	108	103	99	106	101	98	101	98	95	85
ROOM INDEX	UF (total)									Direct
According to DIN EN 13032-2 2004			Suspended					SHRNOM = 1.25		

C Range: 0 - 360DEG
 C Interval: 30.0DEG
 Test Speed: HIGH
 Temperature: 25.3DEG
 Operators: LPC
 Test Date: 2021-12-22

γ Range: 0 - 120DEG
 γ Interval: 1.0DEG
 Test System: EVERFINE GO-2000B_V1 SYSTEM V2.0.362
 Humidity: 65.0%
 Test Distance: 9.200m [K=1.0000]
 Remarks:

ISOCANDELA DIAGRAM

Test:U:12.00V I:0.3236A P:3.883W PF:1.000 Freq:50.00Hz Lamp Flux:24.1226x1 lm		
NAME: SF15-12V-3528-72-R	TYPE: 硅胶	WEIGHT:
SPEC.:	DIM.: 21mm*11.5mm	SERIAL No.:2021122210
MFR.: OLYMPIA	SUR.:1*0.0115	Shielding Angle:

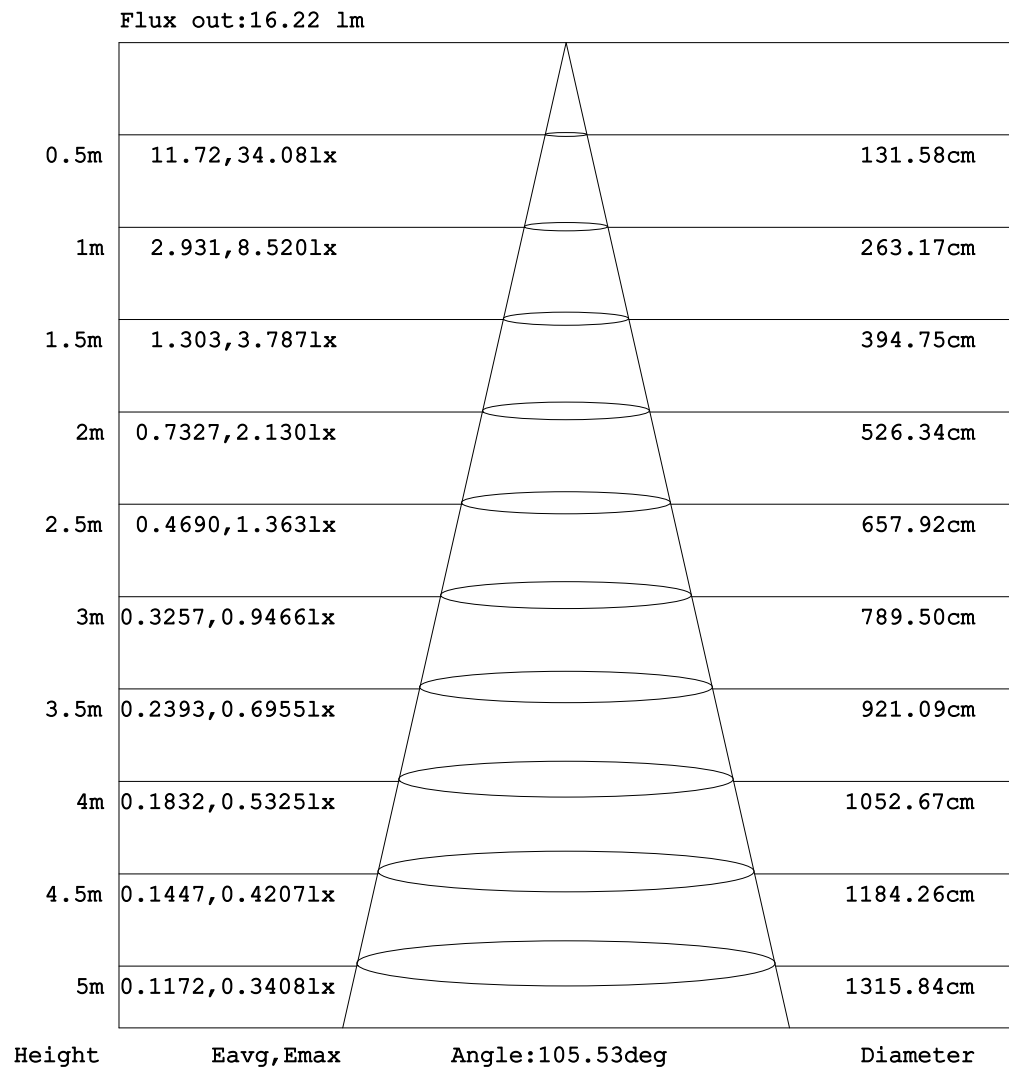


C Range: 0 - 360DEG
C Interval: 30.0DEG
Test Speed: HIGH
Temperature:25.3DEG
Operators:LPC
Test Date:2021-12-22

γ Range: 0 - 120DEG
 γ Interval: 1.0DEG
Test System:EVERFINE GO-2000B_V1 SYSTEM V2.0.362
Humidity:65.0%
Test Distance:9.200m [K=1.0000]
Remarks:

AAI Figure

Test:U:12.00V I:0.3236A P:3.883W PF:1.000 Freq:50.00Hz Lamp Flux:24.1226x1 lm		
NAME: SF15-12V-3528-72-R	TYPE: 硅胶	WEIGHT:
SPEC.:	DIM.: 21mm*11.5mm	SERIAL No.:2021122210
MFR.: OLYMPIA	SUR.:1*0.0115	Shielding Angle:



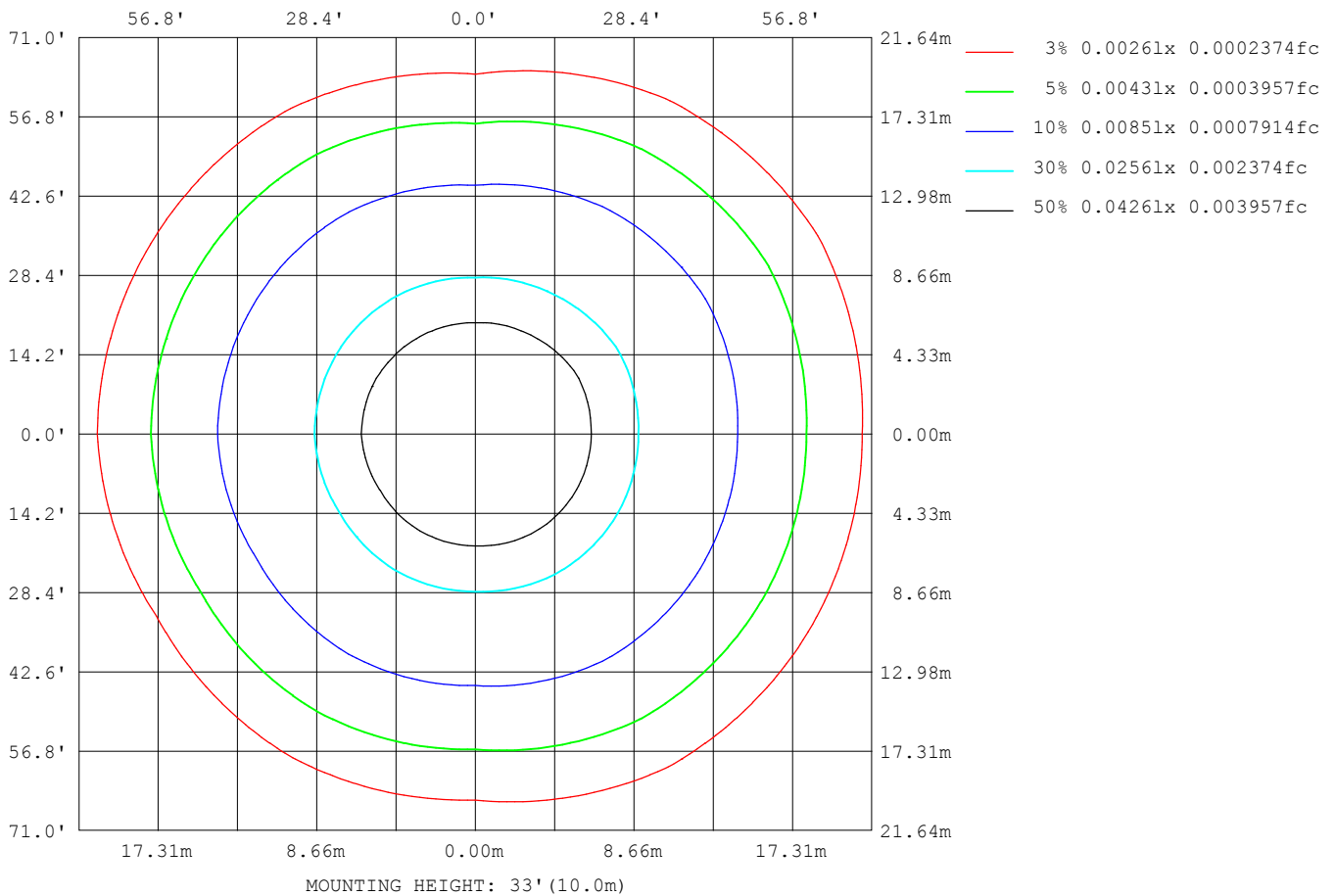
Note:The Curves indicate the illuminated area and the average illumination when the luminaire is at different distance.

C Range: 0 - 360DEG
 C Interval: 30.0DEG
 Test Speed: HIGH
 Temperature:25.3DEG
 Operators:LPC
 Test Date:2021-12-22

γ Range: 0 - 120DEG
 γ Interval: 1.0DEG
 Test System:EVERFINE GO-2000B_V1 SYSTEM V2.0.362
 Humidity:65.0%
 Test Distance:9.200m [K=1.0000]
 Remarks:

ISOLUX DIAGRAM

Test:U:12.00V I:0.3236A P:3.883W PF:1.000 Freq:50.00Hz Lamp Flux:24.1226x1 lm		
NAME: SF15-12V-3528-72-R	TYPE: 硅胶	WEIGHT:
SPEC.:	DIM.: 21mm*11.5mm	SERIAL No.:2021122210
MFR.: OLYMPIA	SUR.:1*0.0115	Shielding Angle:



C Range: 0 - 360DEG
C Interval: 30.0DEG
Test Speed: HIGH
Temperature:25.3DEG
Operators:LPC
Test Date:2021-12-22

γ Range: 0 - 120DEG
γ Interval: 1.0DEG
Test System:EVERFINE GO-2000B_V1 SYSTEM V2.0.362
Humidity:65.0%
Test Distance:9.200m [K=1.0000]
Remarks:

LED Avg.L Report

Test:U:12.00V I:0.3236A P:3.883W PF:1.000 Freq:50.00Hz Lamp Flux:24.1226x1 lm		
NAME: SF15-12V-3528-72-R	TYPE:硅胶	WEIGHT:
SPEC.:	DIM.: 21mm*11.5mm	SERIAL No.:2021122210
MFR.: OLYMPIA	SUR.:1*0.0115	Shielding Angle:

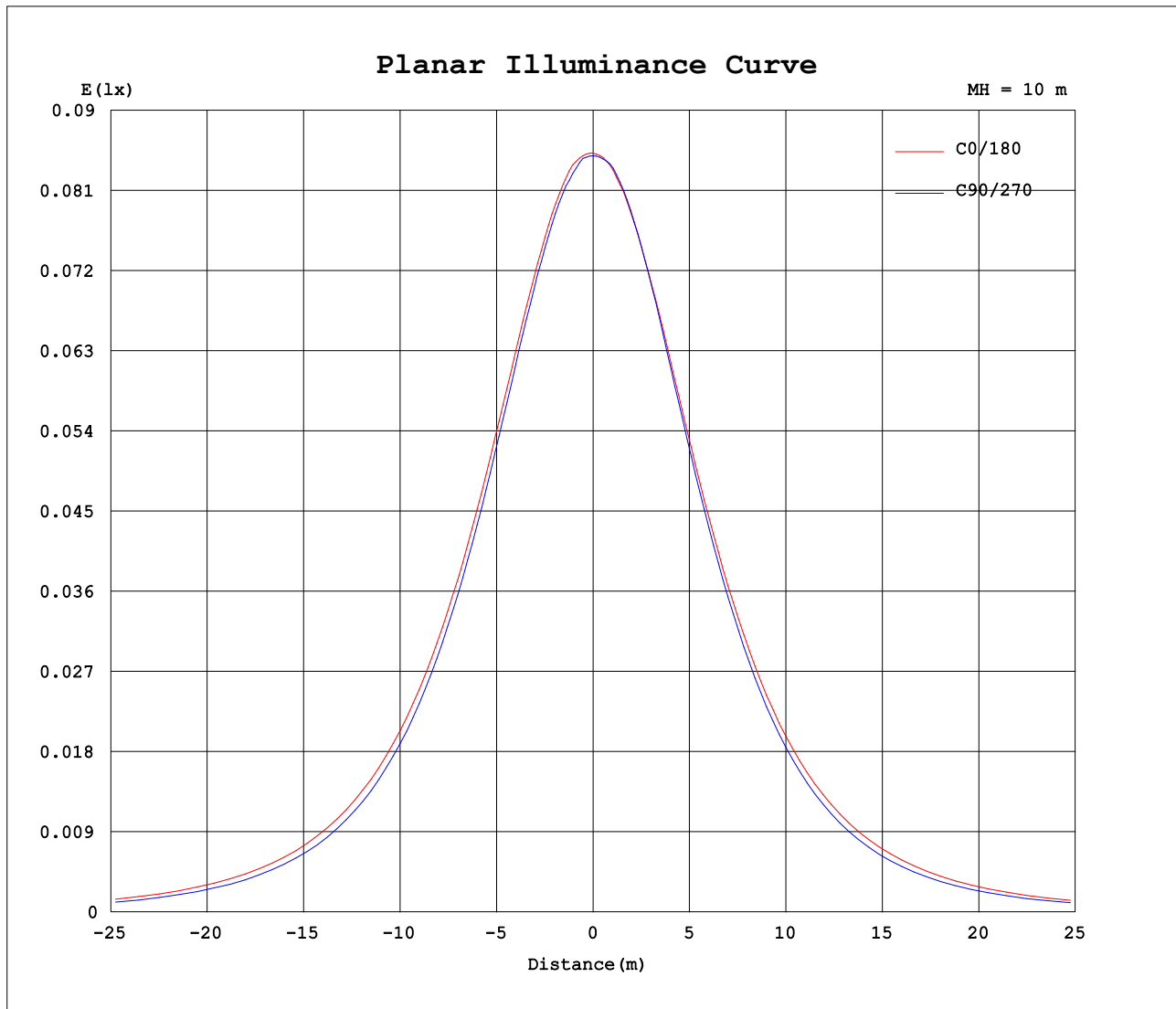
AvgL	cd/m2
L_0~180 (65) av	635
L_0~180 (75) av	568
L_0~180 (85) av	534
L_90~270 (65) av	521
L_90~270 (75) av	376
L_90~270 (85) av	53
L_45 (65) av	629
L_45 (75) av	565
L_45 (85) av	496

Standard: GB/T 29293-2012

C Range: 0 - 360DEG
C Interval: 30.0DEG
Test Speed: HIGH
Temperature:25.3DEG
Operators:LPC
Test Date:2021-12-22

γ Range: 0 - 120DEG
γ Interval: 1.0DEG
Test System:EVERFINE GO-2000B_V1 SYSTEM V2.0.362
Humidity:65.0%
Test Distance:9.200m [K=1.0000]
Remarks:

Planar Illuminance Curve



C Range: 0 - 360DEG
C Interval: 30.0DEG
Test Speed: HIGH
Temperature: 25.3DEG
Operators: LPC
Test Date: 2021-12-22

γ Range: 0 - 120DEG
 γ Interval: 1.0DEG
Test System: EVERFINE GO-2000B_V1 SYSTEM V2.0.362
Humidity: 65.0%
Test Distance: 9.200m [K=1.0000]
Remarks:

LUMINOUS DISTRIBUTION INTENSITY DATA

Test:U:12.00V I:0.3236A P:3.883W PF:1.000 Freq:50.00Hz Lamp Flux:24.1226x1 lm		
NAME: SF15-12V-3528-72-R	TYPE: 硅胶	WEIGHT:
SPEC.:	DIM.: 21mm*11.5mm	SERIAL No.:2021122210
MFR.: OLYMPIA	SUR.:1*0.0115	Shielding Angle:

Table--1

UNIT: cd

C (DEG) γ (DEG)	0	30	60	90	120	150	180	210	240	270	300	330						
0	8.52	8.51	8.49	8.49	8.48	8.48	8.52	8.51	8.49	8.49	8.48	8.48						
5	8.52	8.49	8.48	8.45	8.46	8.41	8.48	8.51	8.44	8.50	8.47	8.48						
10	8.43	8.40	8.43	8.33	8.31	8.23	8.35	8.37	8.31	8.37	8.36	8.46						
15	8.24	8.22	8.23	8.11	8.08	8.01	8.14	8.15	8.08	8.13	8.17	8.29						
20	7.98	7.97	7.95	7.81	7.77	7.70	7.87	7.87	7.76	7.81	7.87	8.04						
25	7.65	7.62	7.59	7.44	7.40	7.33	7.52	7.50	7.40	7.41	7.52	7.71						
30	7.26	7.25	7.17	6.99	6.97	6.90	7.12	7.09	6.98	6.96	7.09	7.35						
35	6.81	6.79	6.71	6.50	6.50	6.43	6.66	6.63	6.54	6.43	6.62	6.94						
40	6.31	6.30	6.20	5.95	5.97	5.90	6.15	6.11	6.02	5.86	6.10	6.47						
45	5.76	5.75	5.65	5.35	5.40	5.33	5.58	5.55	5.45	5.23	5.59	5.95						
50	5.17	5.18	5.07	4.69	4.79	4.69	4.98	4.93	4.85	4.56	5.06	5.37						
55	4.54	4.54	4.46	4.02	4.15	4.06	4.33	4.27	4.22	3.88	4.47	4.77						
60	3.89	3.89	3.83	3.34	3.48	3.40	3.66	3.61	3.56	3.16	3.84	4.13						
65	3.21	3.23	3.15	2.62	2.78	2.67	2.96	2.90	2.85	2.44	3.18	3.47						
70	2.52	2.54	2.48	1.88	2.09	1.96	2.25	2.18	2.14	1.71	2.51	2.79						
75	1.83	1.85	1.80	1.20	1.40	1.30	1.55	1.50	1.45	1.04	1.81	2.10						
80	1.19	1.19	1.16	0.55	0.78	0.69	0.93	0.87	0.79	0.43	1.16	1.42						
85	0.63	0.60	0.57	0.07	0.31	0.29	0.44	0.40	0.28	0.04	0.55	0.81						
90	0.29	0.23	0.19	0.04	0.12	0.11	0.13	0.14	0.04	0.00	0.13	0.35						
95	0.12	0.06	0.09	0.05	0.10	0.07	0.06	0.07	0.04	0.00	0.04	0.13						
100	0.07	0.06	0.09	0.06	0.09	0.07	0.06	0.06	0.04	0.00	0.04	0.05						
105	0.07	0.06	0.08	0.06	0.09	0.07	0.06	0.06	0.04	0.01	0.04	0.05						
110	0.06	0.06	0.08	0.06	0.04	0.07	0.06	0.06	0.06	0.01	0.05	0.05						
115	0.06	0.06	0.08	0.06	0.05	0.07	0.06	0.06	0.06	0.01	0.04	0.05						
120	0.06	0.06	0.04	0.06	0.06	0.07	0.06	0.07	0.06	0.03	0.04	0.06						
125	0.00	0.00	0.00	0.00	0.00	0.00	0.00	0.00	0.00	0.00	0.00	0.00						
130	0.00	0.00	0.00	0.00	0.00	0.00	0.00	0.00	0.00	0.00	0.00	0.00						
135	0.00	0.00	0.00	0.00	0.00	0.00	0.00	0.00	0.00	0.00	0.00	0.00						
140	0.00	0.00	0.00	0.00	0.00	0.00	0.00	0.00	0.00	0.00	0.00	0.00						
145	0.00	0.00	0.00	0.00	0.00	0.00	0.00	0.00	0.00	0.00	0.00	0.00						
150	0.00	0.00	0.00	0.00	0.00	0.00	0.00	0.00	0.00	0.00	0.00	0.00						
155	0.00	0.00	0.00	0.00	0.00	0.00	0.00	0.00	0.00	0.00	0.00	0.00						
160	0.00	0.00	0.00	0.00	0.00	0.00	0.00	0.00	0.00	0.00	0.00	0.00						
165	0.00	0.00	0.00	0.00	0.00	0.00	0.00	0.00	0.00	0.00	0.00	0.00						
170	0.00	0.00	0.00	0.00	0.00	0.00	0.00	0.00	0.00	0.00	0.00	0.00						
175	0.00	0.00	0.00	0.00	0.00	0.00	0.00	0.00	0.00	0.00	0.00	0.00						
180	0.00	0.00	0.00	0.00	0.00	0.00	0.00	0.00	0.00	0.00	0.00	0.00						

C Range: 0 - 360DEG
C Interval: 30.0DEG
Test Speed: HIGH
Temperature:25.3DEG
Operators:LPC
Test Date:2021-12-22

γ Range: 0 - 120DEG
γ Interval: 1.0DEG
Test System:EVERFINE GO-2000B_V1 SYSTEM V2.0.362
Humidity:65.0%
Test Distance:9.200m [K=1.0000]
Remarks:

Photometric Data Table [cd]

G/C	0.0	30.0	60.0	90.0	120.0	150.0	180.0	210.0	240.0	270.0
0.0	8.519	8.514	8.493	8.488	8.483	8.478	8.519	8.514	8.493	8.488
3.0	8.524	8.509	8.494	8.493	8.488	8.433	8.503	8.514	8.468	8.488
6.0	8.529	8.483	8.474	8.428	8.439	8.373	8.463	8.484	8.418	8.489
9.0	8.459	8.413	8.454	8.358	8.353	8.272	8.393	8.403	8.332	8.408
12.0	8.368	8.327	8.358	8.247	8.228	8.166	8.272	8.293	8.227	8.283
15.0	8.243	8.217	8.233	8.106	8.077	8.005	8.141	8.147	8.076	8.132
18.0	8.092	8.081	8.067	7.930	7.901	7.834	7.990	7.997	7.910	7.961
21.0	7.921	7.905	7.881	7.749	7.695	7.628	7.804	7.796	7.694	7.720
24.0	7.725	7.704	7.670	7.513	7.474	7.417	7.598	7.585	7.478	7.499
27.0	7.504	7.488	7.434	7.261	7.233	7.176	7.367	7.343	7.241	7.223
30.0	7.258	7.246	7.173	6.990	6.972	6.905	7.116	7.087	6.985	6.957
33.0	6.992	6.975	6.891	6.703	6.695	6.633	6.859	6.816	6.709	6.650
36.0	6.725	6.693	6.615	6.392	6.399	6.326	6.568	6.529	6.432	6.328
39.0	6.419	6.412	6.308	6.055	6.087	6.000	6.256	6.223	6.125	5.977
42.0	6.097	6.095	5.982	5.713	5.751	5.673	5.924	5.891	5.799	5.610
45.0	5.761	5.753	5.650	5.351	5.404	5.331	5.582	5.549	5.452	5.233
48.0	5.414	5.411	5.313	4.969	5.042	4.954	5.225	5.173	5.095	4.836
51.0	5.047	5.045	4.952	4.572	4.670	4.572	4.848	4.796	4.728	4.429
54.0	4.675	4.668	4.590	4.165	4.278	4.170	4.457	4.424	4.341	4.022
57.0	4.283	4.286	4.208	3.768	3.886	3.783	4.069	4.002	3.954	3.595
60.0	3.891	3.894	3.831	3.341	3.484	3.396	3.657	3.610	3.557	3.157
63.0	3.489	3.497	3.434	2.913	3.072	2.939	3.250	3.178	3.134	2.735
66.0	3.072	3.090	3.022	2.466	2.640	2.532	2.828	2.751	2.713	2.293
69.0	2.660	2.677	2.615	2.024	2.223	2.099	2.391	2.338	2.280	1.856
72.0	2.248	2.265	2.208	1.592	1.801	1.677	1.964	1.886	1.858	1.444
75.0	1.831	1.848	1.801	1.200	1.404	1.301	1.552	1.499	1.451	1.037
78.0	1.444	1.451	1.409	0.7980	1.012	0.9187	1.175	1.112	1.054	0.6545
81.0	1.062	1.059	1.022	0.4462	0.6645	0.5973	0.8280	0.7548	0.6672	0.3226
84.0	0.7250	0.7075	0.6698	0.1499	0.3829	0.3511	0.5217	0.4734	0.3510	0.0761
87.0	0.4732	0.4265	0.3779	0.0352	0.1916	0.1856	0.2860	0.2571	0.1404	0.0050
90.0	0.2870	0.2308	0.1914	0.0402	0.1208	0.1052	0.1304	0.1360	0.0402	0
93.0	0.1712	0.1103	0.1108	0.0402	0.1006	0.0653	0.0603	0.0755	0.0402	0
96.0	0.1057	0.0553	0.0905	0.0453	0.0905	0.0653	0.0603	0.0604	0.0402	0
99.0	0.0804	0.0553	0.0905	0.0503	0.0905	0.0653	0.0603	0.0603	0.0402	0
102.0	0.0653	0.0553	0.0855	0.0553	0.0905	0.0653	0.0604	0.0603	0.0402	0.0050
105.0	0.0653	0.0553	0.0804	0.0553	0.0855	0.0653	0.0553	0.0603	0.0403	0.0050
108.0	0.0603	0.0553	0.0754	0.0553	0.0456	0.0653	0.0554	0.0603	0.0553	0.0050
111.0	0.0553	0.0553	0.0754	0.0553	0.0452	0.0653	0.0603	0.0603	0.0603	0.0050
114.0	0.0553	0.0553	0.0754	0.0553	0.0503	0.0653	0.0603	0.0603	0.0603	0.0050
117.0	0.0553	0.0553	0.0754	0.0553	0.0503	0.0653	0.0603	0.0603	0.0603	0.0100
120.0	0.0553	0.0553	0.0402	0.0553	0.0603	0.0653	0.0603	0.0653	0.0603	0.0251
G/C	300.0	330.0								
0.0	8.483	8.478								
3.0	8.478	8.493								
6.0	8.443	8.478								
9.0	8.398	8.463								
12.0	8.307	8.398								
15.0	8.166	8.293								
18.0	8.000	8.157								
21.0	7.814	7.976								
24.0	7.598	7.785								
27.0	7.352	7.560								
30.0	7.090	7.348								
33.0	6.799	7.107								
36.0	6.512	6.846								
39.0	6.211	6.570								
42.0	5.899	6.268								
45.0	5.593	5.946								
48.0	5.281	5.610								
51.0	4.954	5.258								
54.0	4.587	4.896								
57.0	4.215	4.514								
60.0	3.838	4.127								
63.0	3.446	3.736								
66.0	3.044	3.333								
69.0	2.637	2.921								
72.0	2.225	2.504								
75.0	1.813	2.097								
78.0	1.421	1.680								
81.0	1.029	1.298								
84.0	0.6621	0.9161								
87.0	0.3461	0.5940								
90.0	0.1252	0.3524								

C Range: 0 - 360DEG
 C Interval: 30.0DEG
 Test Speed: HIGH
 Temperature: 25.3DEG
 Operators: LPC
 Test Date: 2021-12-22

γ Range: 0 - 120DEG
 γ Interval: 1.0DEG
 Test System: EVERFINE GO-2000B_V1 SYSTEM V2.0.362
 Humidity: 65.0%
 Test Distance: 9.200m [K=1.0000]
 Remarks:

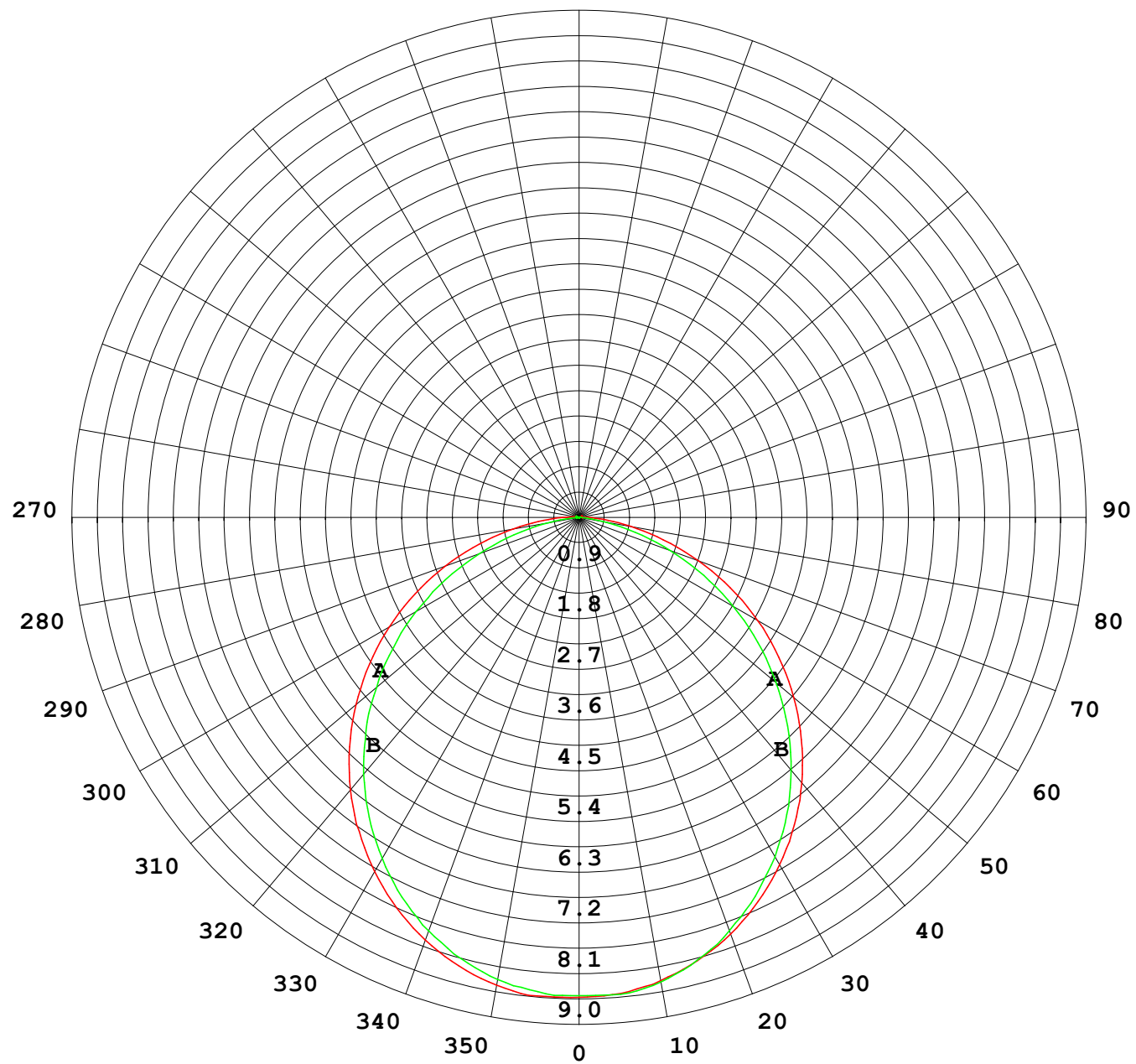
Photometric Data Table [cd]

93.0	0.0402	0.1964
96.0	0.0402	0.1058
99.0	0.0402	0.0554
102.0	0.0402	0.0452
105.0	0.0402	0.0452
108.0	0.0452	0.0452
111.0	0.0452	0.0452
114.0	0.0452	0.0452
117.0	0.0401	0.0553
120.0	0.0352	0.0603

C Range: 0 - 360DEG
C Interval: 30.0DEG
Test Speed: HIGH
Temperature: 25.3DEG
Operators: LPC
Test Date: 2021-12-22

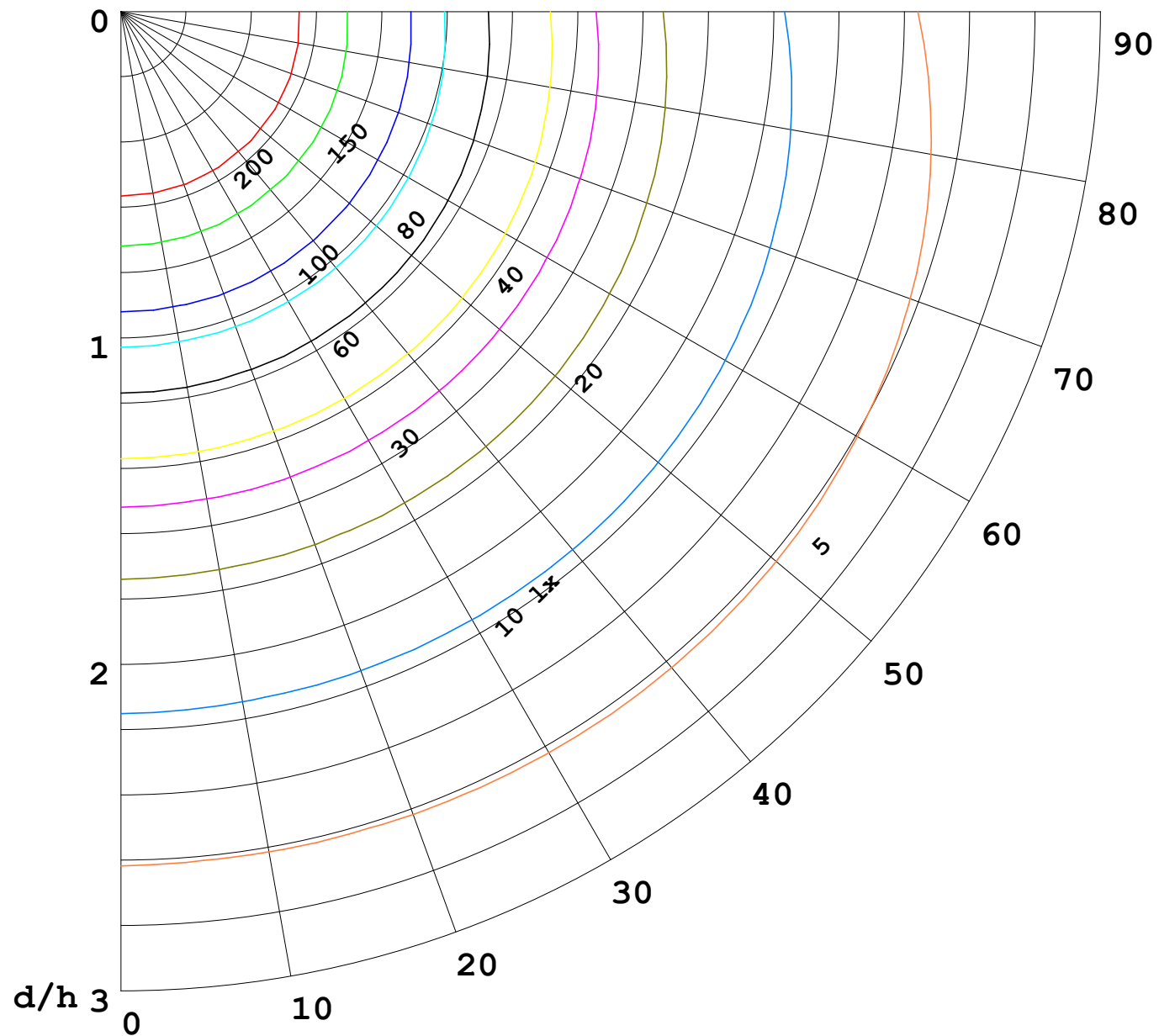
γ Range: 0 - 120DEG
γ Interval: 1.0DEG
Test System: EVERFINE GO-2000B_V1 SYSTEM V2.0.362
Humidity: 65.0%
Test Distance: 9.200m [K=1.0000]
Remarks:

I (cd)



1000 lm

$\kappa = 1$



F = 5000 lm
 K = 0.7
 Hcc = 0.0 m
 Hfc = 0.0 m
 Eave = 100 lx

	Pcc	Pw	Pfc
—	70	50	30
—	50	30	20

