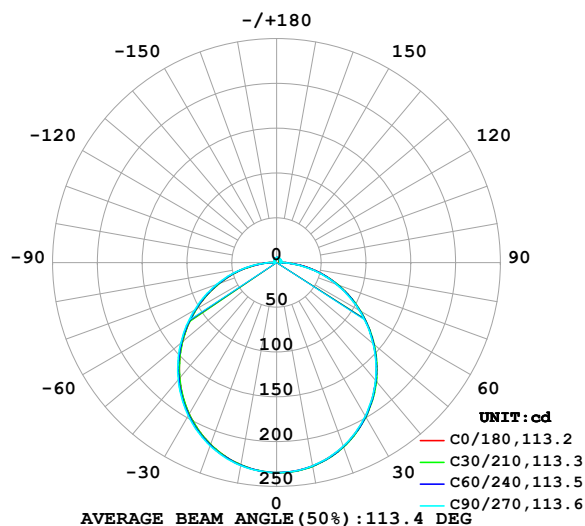


LUMINAIRE PHOTOMETRIC TEST REPORT

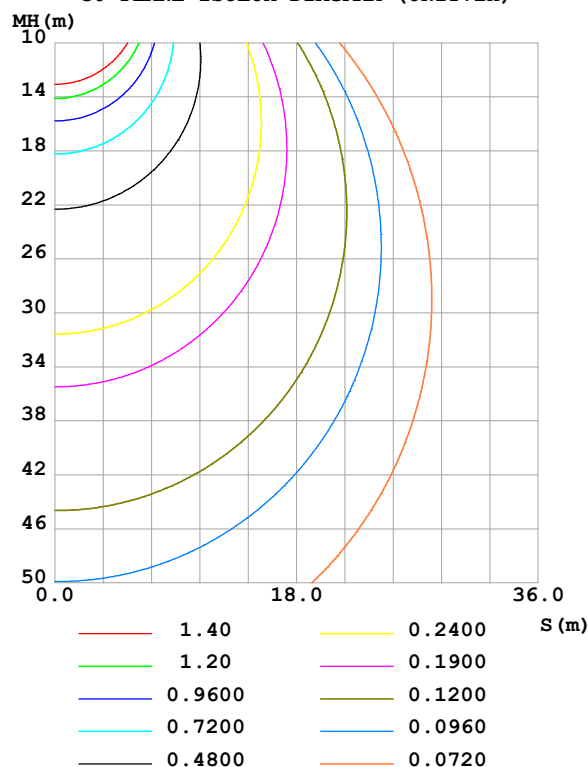
Test:U:24.00V I:1.041A P:24.98W PF:1.000 Freq:0Hz Lamp Flux:718.895x1 lm		
NAME: SF10-24V-5050-84-SPI-RGBW(3000K)-ALL	TYPE:	WEIGHT:
SPEC.:	DIM.: Length=1m	SERIAL No.:
MFR.: OLympia lighting	SUR.:	Shielding Angle:

DATA OF LAMP		PHOTOMETRIC DATA Eff: 28.78 lm/W			
MODEL	2835	I _{max} (cd)	234.6	S/MH(C0/180)	1.24
NOMINAL POWER(W)	22	LOR(%)	100.0	S/MH(C90/270)	1.25
RATED VOLTAGE(V)	24	TOTAL FLUX(lm)	718.90	η UP,DN(C0-180)	2.0,48.3
NOMINAL FLUX(lm)	718.895	CIE CLASS	DIRECT	η UP,DN(C180-360)	1.6,48.0
LAMPS INSIDE	1	η up (%)	3.6	CIBSE SHR NOM	1.25
TEST VOLTAGE(V)		η down (%)	96.4	CIBSE SHR MAX	1.35

LUMINOUS INTENSITY DISTRIBUTION DIAGRAM



C0 PLANE ISOLUX DIAGRAM (UNIT:lx)



C Range: 0 - 360DEG
C Interval: 30.0DEG
Test Speed: HIGH
Temperature:25.3℃
Operators:
Test Date:2025-03-14

γ Range: 0 - 180DEG
γ Interval: 1.0DEG
Test System:EVERFINE GO-2000B_V1 SYSTEM V2.00.488
Humidity:65.0%
Test Distance:6.360m [K=1.0000]
Remarks:

ZONAL FLUX DIAGRAM

ZONAL FLUX DIAGRAM:

γ	C0	C45	C90	C135	C180	C225	C270	C315	γ	Φ zone	Φ total	%lum, lamp
10	230.6	230.9	230.4	229.7	229.5	229.6	230.2	230.8	0- 10	22.18	22.18	3.09,3.09
20	218.4	218.7	218.0	216.6	216.0	216.4	217.5	218.6	10- 20	63.46	85.63	11.9,11.9
30	198.6	199.0	198.0	196.1	195.3	195.9	197.4	198.7	20- 30	96.01	181.6	25.3,25.3
40	172.4	173.0	171.7	169.5	168.7	169.1	170.9	172.6	30- 40	115.7	297.3	41.4,41.4
50	141.4	141.8	140.7	138.2	137.3	137.8	139.7	141.7	40- 50	120.3	417.6	58.1,58.1
60	107.6	107.9	106.6	104.2	103.4	103.9	105.9	107.9	50- 60	110.1	527.6	73.4,73.4
70	72.58	72.62	71.22	69.08	68.46	68.99	70.98	72.84	60- 70	87.55	615.2	85.6,85.6
80	37.64	37.34	35.85	33.99	33.69	34.27	36.26	37.94	70- 80	56.27	671.5	93.4,93.4
90	8.861	7.331	4.078	5.946	6.748	5.483	3.549	7.305	80- 90	21.29	692.7	96.4,96.4
100	3.193	3.870	4.507	3.831	2.800	2.848	3.366	2.874	90-100	4.160	696.9	96.9,96.9
110	3.470	4.147	4.838	4.165	3.134	3.182	3.688	3.144	100-110	3.747	700.7	97.5,97.5
120	3.838	4.427	5.024	4.450	3.494	3.528	3.863	3.410	110-120	3.814	704.5	98,98
130	4.229	4.669	5.105	4.707	3.901	3.885	3.886	3.745	120-130	3.697	708.2	98.5,98.5
140	4.577	4.886	5.186	4.936	4.323	4.303	4.109	4.037	130-140	3.398	711.6	99,99
150	4.914	5.102	5.332	5.170	4.739	4.735	4.576	4.460	140-150	2.952	714.5	99.4,99.4
160	5.245	5.331	5.511	5.401	5.150	5.159	5.044	4.931	150-160	2.331	716.8	99.7,99.7
170	5.517	5.545	5.625	5.586	5.506	5.513	5.433	5.322	160-170	1.516	718.4	99.9,99.9
180	5.647	5.700	5.746	5.643	5.693	5.691	5.714	5.642	170-180	0.5325	718.9	100,100
DEG	LUMINOUS INTENSITY:cd									UNIT:lm		

Conical surface Flux(90deg): 357.81 lm

%lum = 49.8%

%lamp = 49.8%

Conical surface Flux(130deg): 574.87 lm

%lum = 80.0%

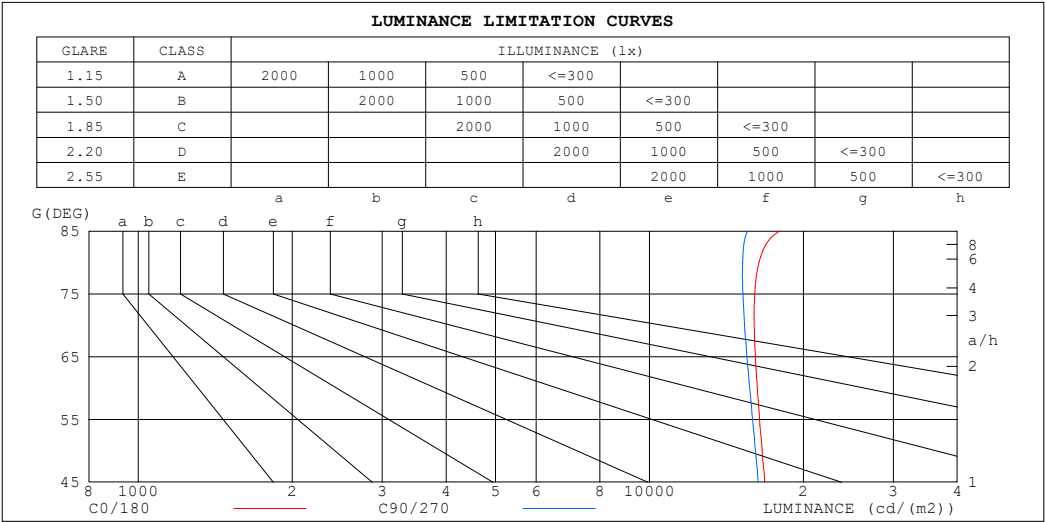
%lamp = 80.0%

C Range: 0 - 360DEG
 C Interval: 30.0DEG
 Test Speed: HIGH
 Temperature:25.3℃
 Operators:
 Test Date:2025-03-14

γ Range: 0 - 180DEG
 γ Interval: 1.0DEG
 Test System:EVERFINE GO-2000B_V1 SYSTEM V2.00.488
 Humidity:65.0%
 Test Distance:6.360m [K=1.0000]
 Remarks:

LUMINANCE LIMITATION CURVES

Test:U:24.00V I:1.041A P:24.98W PF:1.000 Freq:0Hz Lamp Flux:718.895x1 lm		
NAME: SF10-24V-5050-84-SPI-RGBW(3000K)-ALL	TYPE:	WEIGHT:
SPEC.:	DIM.: Length=1m	SERIAL No.:
MFR.: OLympia lighting	SUR.:	Shielding Angle:



LUMINANCE cd/(m2)		
G (DEG)	C0/180	C90/270
85	17951	15535
80	16369	15208
75	16066	15236
70	16026	15339
65	16111	15508
60	16248	15702
55	16427	15904
50	16609	16119
45	16802	16323

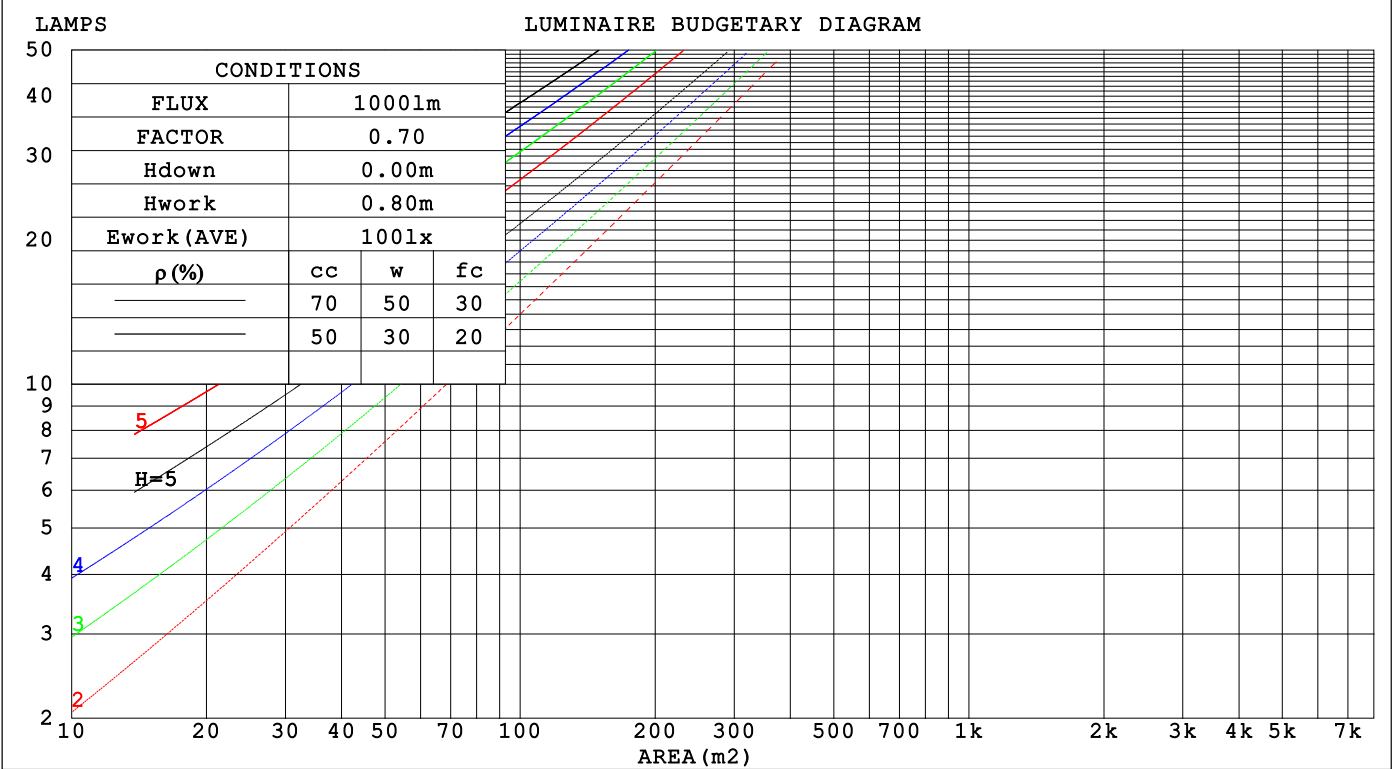
C Range: 0 - 360DEG
C Interval: 30.0DEG
Test Speed: HIGH
Temperature:25.3℃
Operators:
Test Date:2025-03-14

γ Range: 0 - 180DEG
γ Interval: 1.0DEG
Test System:EVERFINE GO-2000B_V1 SYSTEM V2.00.488
Humidity:65.0%
Test Distance:6.360m [K=1.0000]
Remarks:

CU AND LUMINAIRE BUDGETARY ESTIMATE DIAGRAM

Test:U:24.00V I:1.041A P:24.98W PF:1.000 Freq:0Hz Lamp Flux:718.895x1 lm		
NAME: SF10-24V-5050-84-SPI-RGBW(3000K)-ALL	TYPE:	WEIGHT:
SPEC.:	DIM.: Length=1m	SERIAL No.:
MFR.: OLYMPIA lighting	SUR.:	Shielding Angle:

pcc	80%			70%			50%			30%			10%			0
pw	50%	30%	10%	50%	30%	10%	50%	30%	10%	50%	30%	10%	50%	30%	10%	0
pfc	20%			20%			20%			20%			20%			0
RCR	RCR:Room Cavity Ratio			Coefficients of Utilization(CU)												
0.0	1.18	1.18	1.18	1.15	1.15	1.15	1.09	1.09	1.09	1.04	1.04	1.04	.99	.99	.99	.96
1.0	1.02	.98	.94	.00	.95	.92	.95	.91	.88	.90	.87	.85	.86	.84	.82	.79
2.0	.89	.82	.76	.86	.80	.74	.82	.77	.72	.78	.74	.70	.75	.71	.68	.65
3.0	.78	.69	.62	.76	.68	.62	.72	.66	.60	.69	.63	.59	.66	.61	.57	.55
4.0	.69	.60	.53	.67	.59	.52	.64	.57	.51	.61	.55	.50	.59	.53	.49	.47
5.0	.61	.52	.45	.60	.51	.45	.57	.50	.44	.55	.48	.43	.53	.47	.42	.40
6.0	.55	.46	.39	.54	.45	.39	.52	.44	.38	.50	.43	.38	.48	.42	.37	.35
7.0	.50	.41	.35	.49	.40	.34	.47	.39	.34	.45	.38	.33	.43	.38	.33	.31
8.0	.45	.37	.31	.45	.36	.31	.43	.36	.30	.41	.35	.30	.40	.34	.29	.27
9.0	.42	.33	.28	.41	.33	.28	.39	.32	.27	.38	.32	.27	.37	.31	.27	.25
10.0	.38	.30	.25	.38	.30	.25	.36	.30	.25	.35	.29	.24	.34	.28	.24	.22



C Range: 0 - 360DEG

C Interval: 30.0DEG

Test Speed: HIGH

Temperature:25.3℃

Operators:

Test Date:2025-03-14

γ Range: 0 - 180DEG

γ Interval: 1.0DEG

Test System:EVERFINE GO-2000B_V1 SYSTEM V2.00.488

Humidity:65.0%

Test Distance:6.360m [K=1.0000]

Remarks:

WEC AND CCEC

Test:U:24.00V I:1.041A P:24.98W PF:1.000 Freq:0Hz Lamp Flux:718.895x1 lm		
NAME: SF10-24V-5050-84-SPI-RGBW(3000K)-ALL	TYPE:	WEIGHT:
SPEC.:	DIM.: Length=1m	SERIAL No.:
MFR.: OLYMPIA lighting	SUR.:	Shielding Angle:

pcc	80%			70%			50%			30%			10%			0
pw	50%	30%	10%	50%	30%	10%	50%	30%	10%	50%	30%	10%	50%	30%	10%	0
pfc	20%			20%			20%			20%			20%			0
RCR	RCR:Room Cavity Ratio						Wall Exitance Coefficients(WEC)									
0.0																
1.0	.326	.185	.059	.318	.181	.058	.302	.173	.055	.288	.166	.053	.275	.159	.051	
2.0	.301	.165	.051	.294	.162	.050	.280	.156	.048	.267	.150	.047	.256	.145	.046	
3.0	.276	.147	.044	.269	.144	.043	.257	.139	.042	.246	.135	.041	.235	.130	.040	
4.0	.253	.132	.039	.247	.129	.038	.236	.125	.037	.226	.122	.037	.217	.118	.036	
5.0	.233	.119	.034	.228	.117	.034	.218	.114	.033	.209	.110	.033	.201	.107	.032	
6.0	.216	.108	.031	.211	.107	.031	.202	.104	.030	.194	.101	.030	.186	.098	.029	
7.0	.200	.099	.028	.196	.098	.028	.188	.095	.027	.181	.093	.027	.174	.090	.027	
8.0	.187	.091	.026	.183	.090	.025	.176	.088	.025	.169	.086	.025	.163	.084	.024	
9.0	.175	.084	.024	.171	.083	.023	.165	.082	.023	.159	.080	.023	.153	.078	.022	
10.0	.164	.079	.022	.161	.078	.022	.155	.076	.021	.150	.074	.021	.144	.073	.021	

pcc	80%			70%			50%			30%			10%			0
pw	50%	30%	10%	50%	30%	10%	50%	30%	10%	50%	30%	10%	50%	30%	10%	0
pfc	20%			20%			20%			20%			20%			0
RCR	RCR:Room Cavity Ratio						Ceiling Cavity Exitance Coefficients (CCEC)									
0.0	.218	.218	.218	.186	.186	.186	.127	.127	.127	.073	.073	.073	.023	.023	.023	
1.0	.209	.184	.161	.179	.158	.139	.123	.109	.096	.071	.063	.056	.023	.020	.018	
2.0	.202	.160	.125	.173	.138	.108	.118	.095	.075	.068	.055	.044	.022	.018	.014	
3.0	.194	.143	.102	.166	.123	.088	.114	.085	.062	.066	.050	.036	.021	.016	.012	
4.0	.186	.129	.086	.160	.112	.075	.110	.078	.053	.064	.046	.031	.020	.015	.010	
5.0	.179	.119	.075	.153	.103	.065	.106	.072	.046	.061	.042	.027	.020	.014	.009	
6.0	.171	.111	.067	.147	.096	.059	.102	.067	.042	.059	.040	.025	.019	.013	.008	
7.0	.165	.104	.062	.142	.090	.054	.098	.063	.038	.057	.037	.023	.018	.012	.007	
8.0	.158	.098	.057	.136	.085	.050	.094	.060	.035	.055	.035	.021	.018	.012	.007	
9.0	.152	.093	.054	.131	.081	.047	.091	.057	.033	.053	.034	.020	.017	.011	.007	
10.0	.146	.089	.051	.126	.077	.045	.087	.054	.032	.051	.032	.019	.017	.011	.006	

C Range: 0 - 360DEG
C Interval: 30.0DEG
Test Speed: HIGH
Temperature:25.3℃
Operators:
Test Date:2025-03-14

γ Range: 0 - 180DEG
γ Interval: 1.0DEG
Test System:EVERFINE GO-2000B_V1 SYSTEM V2.00.488
Humidity:65.0%
Test Distance:6.360m [K=1.0000]
Remarks:

UGR(Unified Glare Rating) Table

Test:U:24.00V I:1.041A P:24.98W PF:1.000 Freq:0Hz Lamp Flux:718.895x1 lm											
NAME: SF10-24V-5050-84-SPI-RGBW(3000K)-ALL						TYPE:		WEIGHT:			
SPEC.:						DIM.: Length=1m		SERIAL No.:			
MFR.: OLympia lighting						SUR.:		Shielding Angle:			
ceiling/cavity	0.7	0.7	0.5	0.5	0.3	0.7	0.7	0.5	0.5	0.3	
walls	0.5	0.3	0.5	0.3	0.3	0.5	0.3	0.5	0.3	0.3	
working plane	0.2	0.2	0.2	0.2	0.2	0.2	0.2	0.2	0.2	0.2	
Room dimensions		Viewed crosswise					Viewed endwise				
x = 2H y = 2H	22.8	24.3	23.1	24.6	24.9	22.7	24.2	23.0	24.4	24.7	
	3H	24.5	25.9	24.9	26.2	26.5	24.3	25.7	24.7	26.0	26.3
	4H	25.3	26.6	25.7	26.9	27.3	25.1	26.4	25.5	26.7	27.1
	6H	26.0	27.2	26.3	27.5	27.9	25.7	26.9	26.1	27.3	27.6
	8H	26.2	27.4	26.6	27.8	28.1	25.9	27.1	26.3	27.5	27.9
	12H	26.4	27.6	26.8	27.9	28.3	26.1	27.3	26.5	27.6	28.0
4H	2H	23.4	24.8	23.8	25.1	25.4	23.3	24.6	23.7	25.0	25.3
	3H	25.4	26.5	25.8	26.9	27.3	25.2	26.4	25.6	26.7	27.1
	4H	26.3	27.3	26.7	27.7	28.1	26.1	27.2	26.5	27.5	28.0
	6H	27.1	28.0	27.5	28.4	28.9	26.9	27.8	27.3	28.2	28.7
	8H	27.4	28.3	27.9	28.7	29.2	27.2	28.0	27.6	28.5	28.9
	12H	27.7	28.5	28.2	29.0	29.5	27.4	28.2	27.9	28.7	29.2
8H	4H	26.6	27.5	27.1	27.9	28.4	26.5	27.3	26.9	27.8	28.2
	6H	27.6	28.3	28.1	28.8	29.3	27.4	28.1	27.9	28.6	29.1
	8H	28.1	28.7	28.6	29.2	29.7	27.8	28.5	28.3	29.0	29.5
	12H	28.5	29.0	29.0	29.6	30.1	28.2	28.8	28.7	29.3	29.8
12H	4H	26.6	27.4	27.1	27.9	28.4	26.5	27.3	27.0	27.8	28.2
	6H	27.7	28.4	28.2	28.8	29.4	27.5	28.2	28.0	28.7	29.2
	8H	28.2	28.8	28.8	29.3	29.9	28.0	28.6	28.5	29.1	29.6
Variations with the observer position at spacings(CIE Pub.117):											
S = 1.0H	+ 0.1 / - 0.2					+ 0.1 / - 0.2					
1.5H	+ 0.2 / - 0.3					+ 0.2 / - 0.3					
2.0H	+ 0.1 / - 0.3					+ 0.1 / - 0.3					

CIE Pub.117, 718.9 lm Total Lamp Luminous Flux Correct (8log(F/F0) = -1.1)
Area: 0.0135 m2

C Range: 0 - 360DEG
C Interval: 30.0DEG
Test Speed: HIGH
Temperature:25.3℃
Operators:
Test Date:2025-03-14

γ Range: 0 - 180DEG
γ Interval: 1.0DEG
Test System:EVERFINE GO-2000B_V1 SYSTEM V2.00.488
Humidity:65.0%
Test Distance:6.360m [K=1.0000]
Remarks:

UTILIZATION FACTORS TABLE

Test:U:24.00V I:1.041A P:24.98W PF:1.000 Freq:0Hz Lamp Flux:718.895x1 lm		
NAME: SF10-24V-5050-84-SPI-RGBW(3000K)-ALL	TYPE:	WEIGHT:
SPEC.:	DIM.: Length=1m	SERIAL No.:
MFR.: OLympia lighting	SUR.:	Shielding Angle:

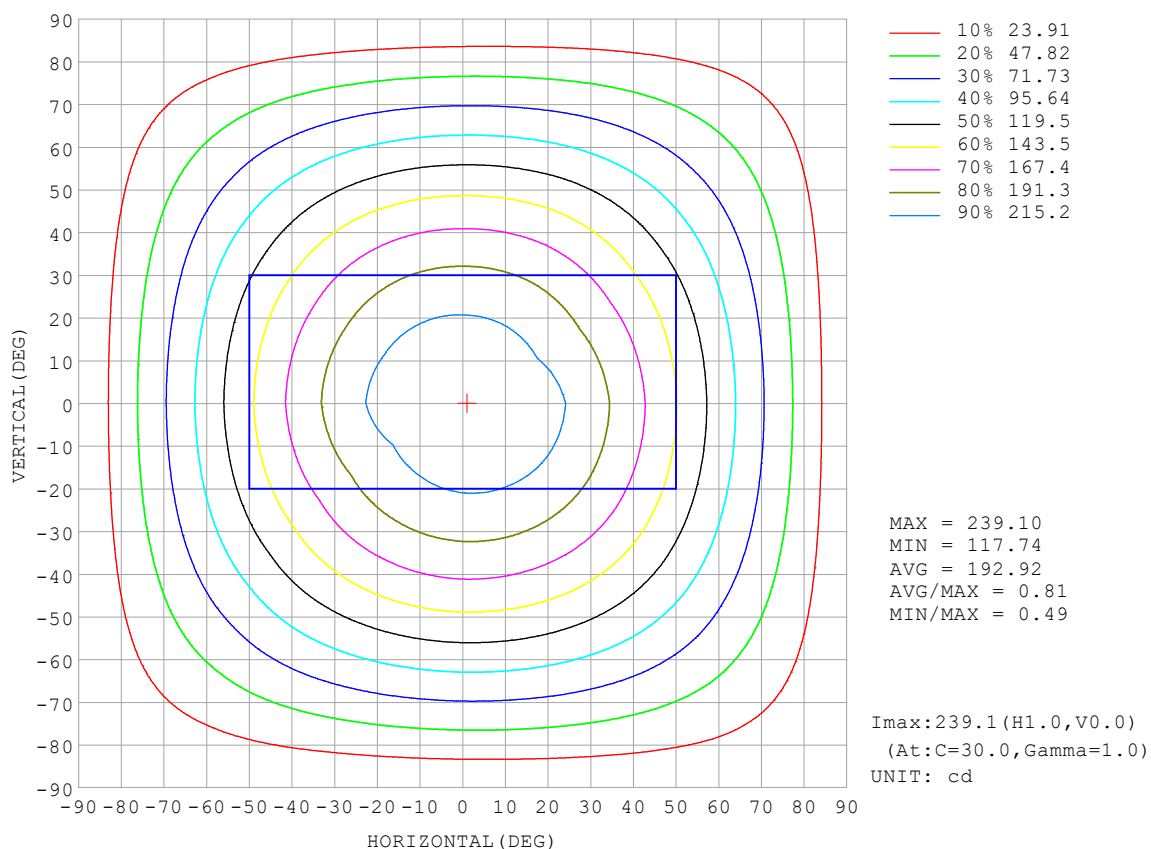
REFLECTANCE										
Ceiling	0.8	0.8	0.8	0.7	0.7	0.7	0.5	0.5	0.5	0
Walls	0.7	0.5	0.3	0.7	0.5	0.3	0.7	0.5	0.3	0
Working plane	0.2	0.2	0.2	0.2	0.2	0.2	0.2	0.2	0.2	0
ROOM INDEX	UTILIZATION FACTORS (PERCENT) $k(RI) \times RCR = 5$									
$k = 0.60$	56	44	37	55	44	37	53	43	36	30
0.80	65	54	46	64	53	46	62	52	45	38
1.00	74	62	55	72	62	54	70	63	54	46
1.25	81	70	62	79	69	62	76	67	61	53
1.50	86	75	68	84	74	68	80	72	66	58
2.00	93	84	77	91	82	76	87	80	74	65
2.50	97	89	82	94	87	81	90	84	79	69
3.00	100	93	87	98	91	86	93	88	83	74
4.00	104	98	93	102	96	92	97	92	88	78
5.00	107	102	97	104	99	95	99	95	92	81
ROOM INDEX	UF (total)									Direct
According to DIN EN 13032-2 2004			Suspended					SHRNOM = 1.25		

C Range: 0 - 360DEG
 C Interval: 30.0DEG
 Test Speed: HIGH
 Temperature: 25.3°C
 Operators:
 Test Date: 2025-03-14

γ Range: 0 - 180DEG
 γ Interval: 1.0DEG
 Test System: EVERFINE GO-2000B_V1 SYSTEM V2.00.488
 Humidity: 65.0%
 Test Distance: 6.360m [K=1.0000]
 Remarks:

ISOCANDELA DIAGRAM

Test:U:24.00V I:1.041A P:24.98W PF:1.000 Freq:0Hz Lamp Flux:718.895x1 lm		
NAME: SF10-24V-5050-84-SPI-RGBW(3000K)-ALL	TYPE:	WEIGHT:
SPEC.:	DIM.: Length=1m	SERIAL No.:
MFR.: OLympia lighting	SUR.:	Shielding Angle:

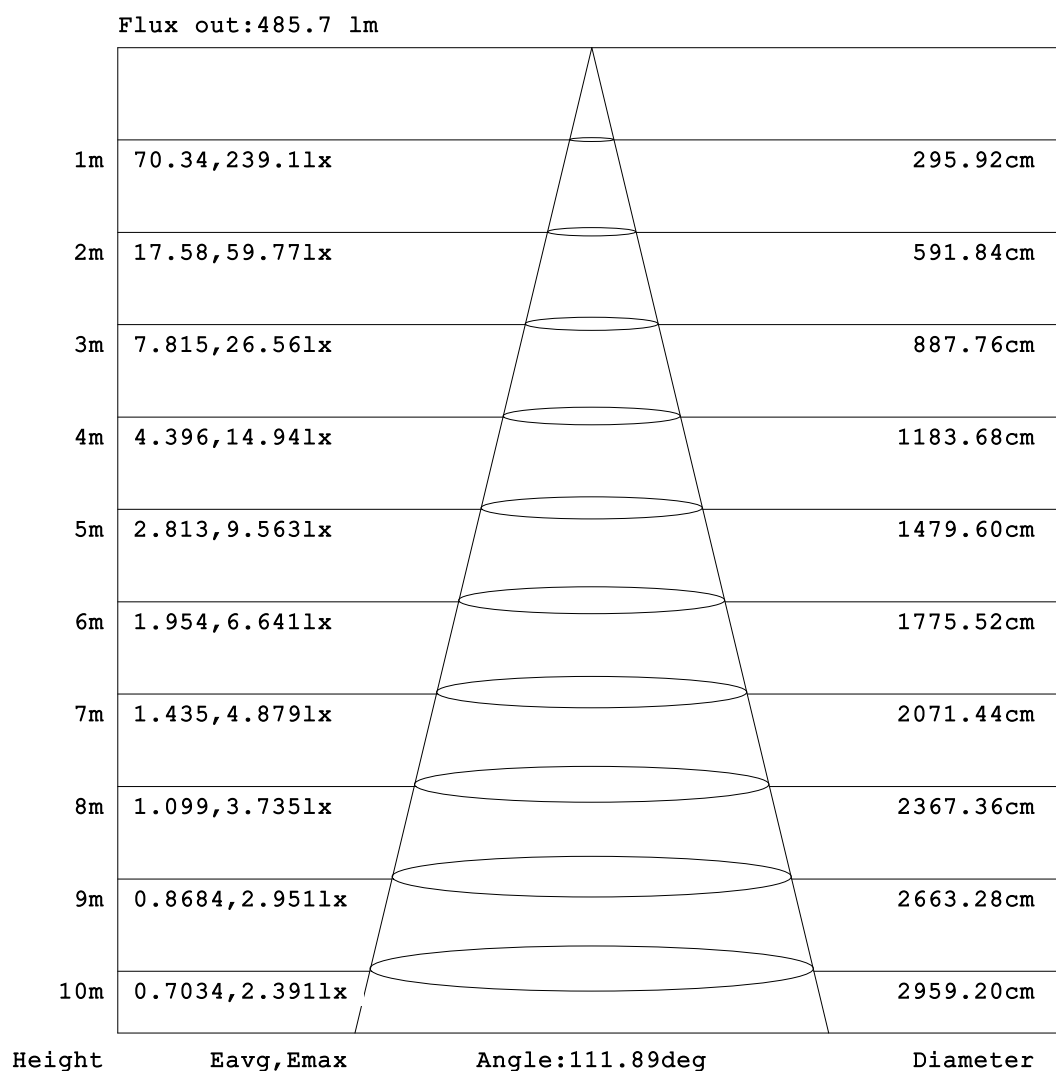


C Range: 0 - 360DEG
C Interval: 30.0DEG
Test Speed: HIGH
Temperature:25.3℃
Operators:
Test Date:2025-03-14

γ Range: 0 - 180DEG
γ Interval: 1.0DEG
Test System:EVERFINE GO-2000B_V1 SYSTEM V2.00.488
Humidity:65.0%
Test Distance:6.360m [K=1.0000]
Remarks:

AAI Figure

Test:U:24.00V I:1.041A P:24.98W PF:1.000 Freq:0Hz Lamp Flux:718.895x1 lm		
NAME: SF10-24V-5050-84-SPI-RGBW(3000K)-ALL	TYPE:	WEIGHT:
SPEC.:	DIM.: Length=1m	SERIAL No.:
MFR.: OLympia lighting	SUR.:	Shielding Angle:



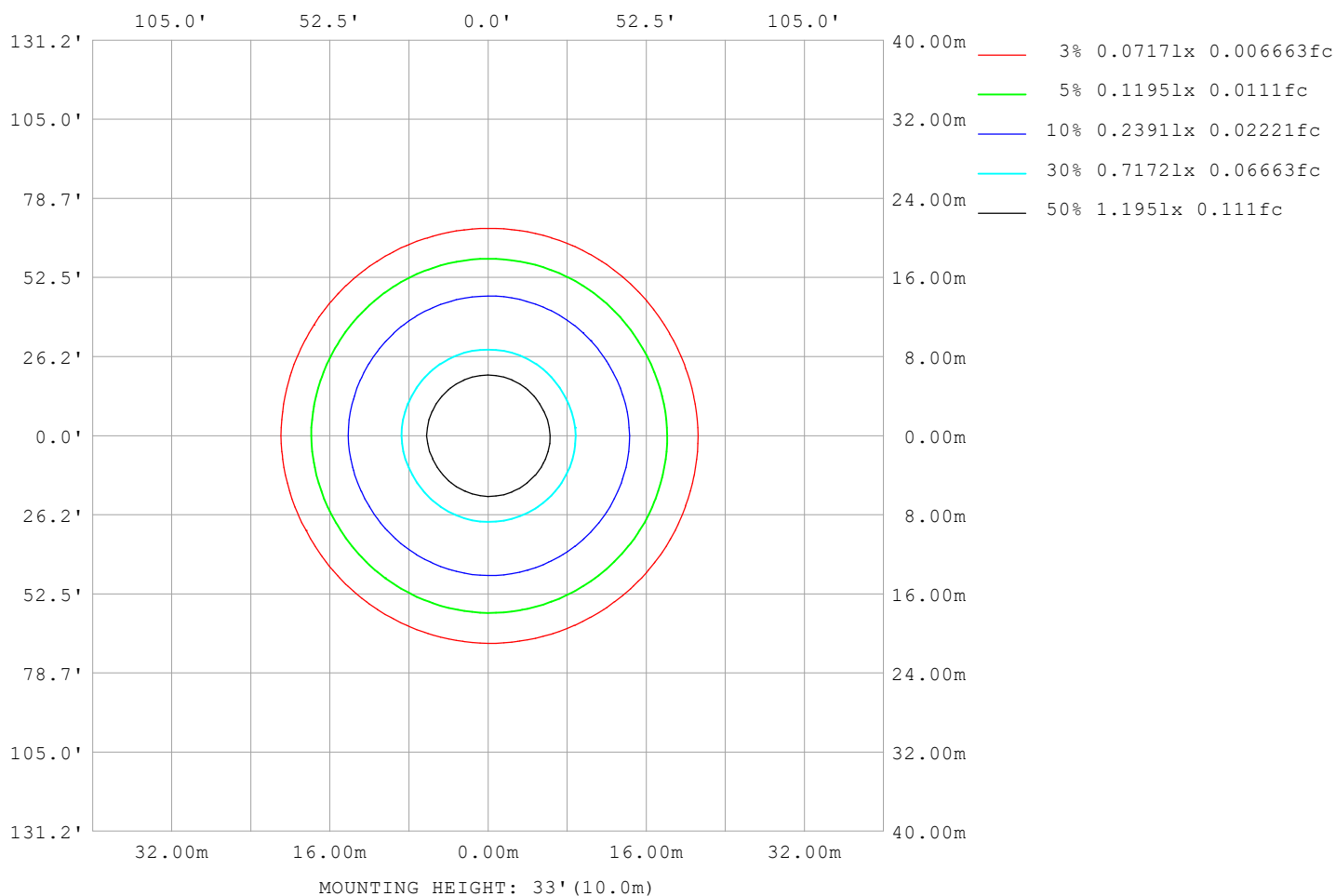
Note:The Curves indicate the illuminated area and the average illumination when the luminaire is at different distance.

C Range: 0 - 360DEG
C Interval: 30.0DEG
Test Speed: HIGH
Temperature:25.3℃
Operators:
Test Date:2025-03-14

γ Range: 0 - 180DEG
γ Interval: 1.0DEG
Test System:EVERFINE GO-2000B_V1 SYSTEM V2.00.488
Humidity:65.0%
Test Distance:6.360m [K=1.0000]
Remarks:

ISOLUX DIAGRAM

Test:U:24.00V I:1.041A P:24.98W PF:1.000 Freq:0Hz Lamp Flux:718.895x1 lm		
NAME: SF10-24V-5050-84-SPI-RGBW(3000K)-ALL	TYPE:	WEIGHT:
SPEC.:	DIM.: Length=1m	SERIAL No.:
MFR.: OLympia lighting	SUR.:	Shielding Angle:



C Range: 0 - 360DEG
C Interval: 30.0DEG
Test Speed: HIGH
Temperature: 25.3°C
Operators:
Test Date: 2025-03-14

γ Range: 0 - 180DEG
γ Interval: 1.0DEG
Test System: EVERFINE GO-2000B_V1 SYSTEM V2.00.488
Humidity: 65.0%
Test Distance: 6.360m [K=1.0000]
Remarks:

LED Avg.L Report

Test:U:24.00V I:1.041A P:24.98W PF:1.000 Freq:0Hz Lamp Flux:718.895x1 lm		
NAME: SF10-24V-5050-84-SPI-RGBW(3000K)-ALL	TYPE:	WEIGHT:
SPEC.:	DIM.: Length=1m	SERIAL No.:
MFR.: OLympia lighting	SUR.:	Shielding Angle:

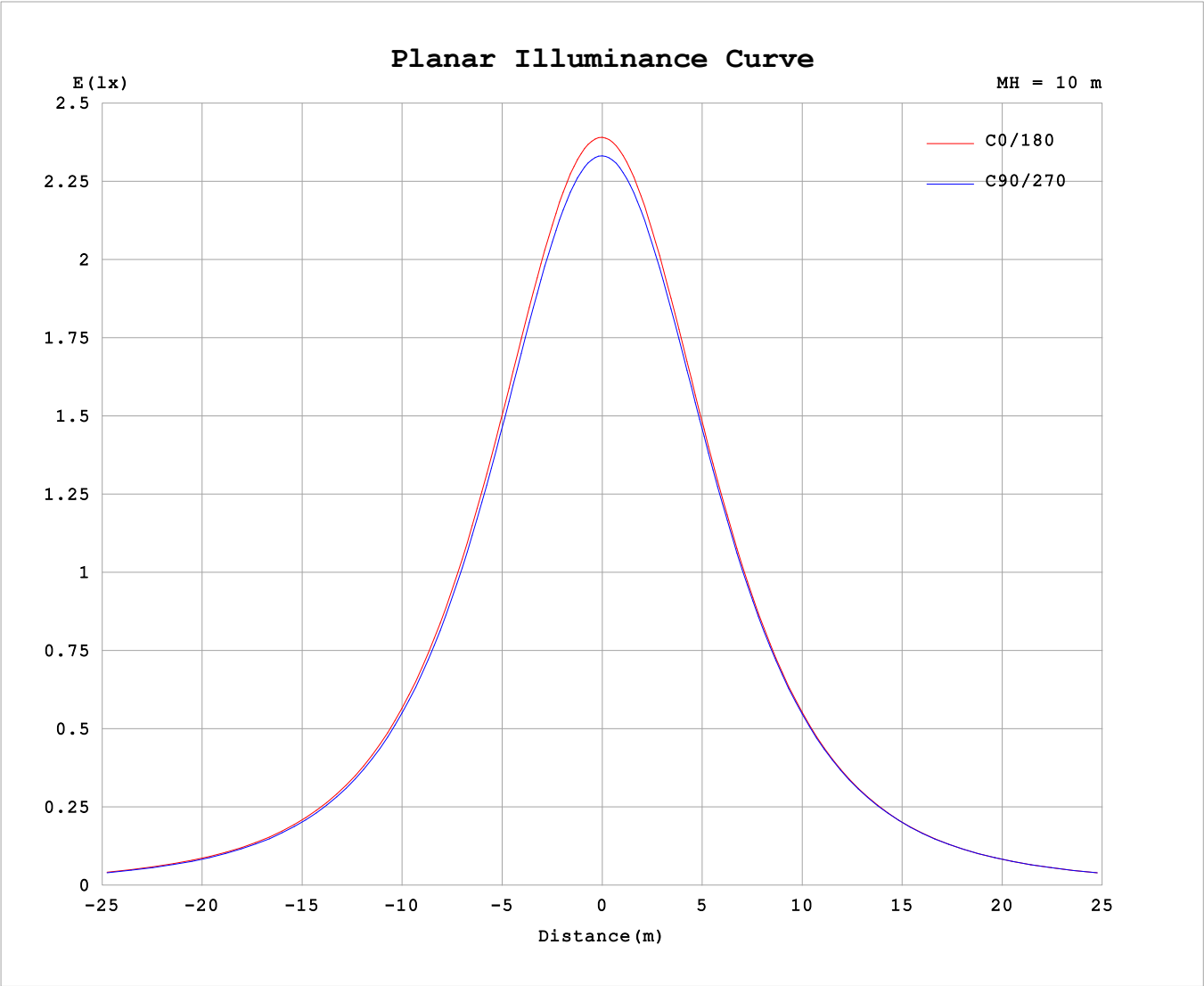
AvgL	cd/m2
L_0~180 (65) av	15436
L_0~180 (75) av	15181
L_0~180 (85) av	16190
L_90~270 (65) av	15548
L_90~270 (75) av	15323
L_90~270 (85) av	15884
L_45 (65) av	15511
L_45 (75) av	15267
L_45 (85) av	15962

Standard: GB/T 29293-2012

C Range: 0 - 360DEG
C Interval: 30.0DEG
Test Speed: HIGH
Temperature:25.3℃
Operators:
Test Date:2025-03-14

γ Range: 0 - 180DEG
γ Interval: 1.0DEG
Test System:EVERFINE GO-2000B_V1 SYSTEM V2.00.488
Humidity:65.0%
Test Distance:6.360m [K=1.0000]
Remarks:

Planar Illuminance Curve



C Range: 0 - 360DEG	γ Range: 0 - 180DEG
C Interval: 30.0DEG	γ Interval: 1.0DEG
Test Speed: HIGH	Test System:EVERFINE GO-2000B_V1 SYSTEM V2.00.488
Temperature:25.3℃	Humidity:65.0%
Operators:	Test Distance:6.360m [K=1.0000]
Test Date:2025-03-14	Remarks:

LUMINOUS DISTRIBUTION INTENSITY DATA

Test:U:24.00V I:1.041A P:24.98W PF:1.000 Freq:0Hz Lamp Flux:718.895x1 lm																	
NAME: SF10-24V-5050-84-SPI-RGBW(3000K)-ALL									TYPE:			WEIGHT:					
SPEC.:									DIM.: Length=1m			SERIAL No.:					
MFR.: OLympia lighting									SUR.:			Shielding Angle:					

Table--1

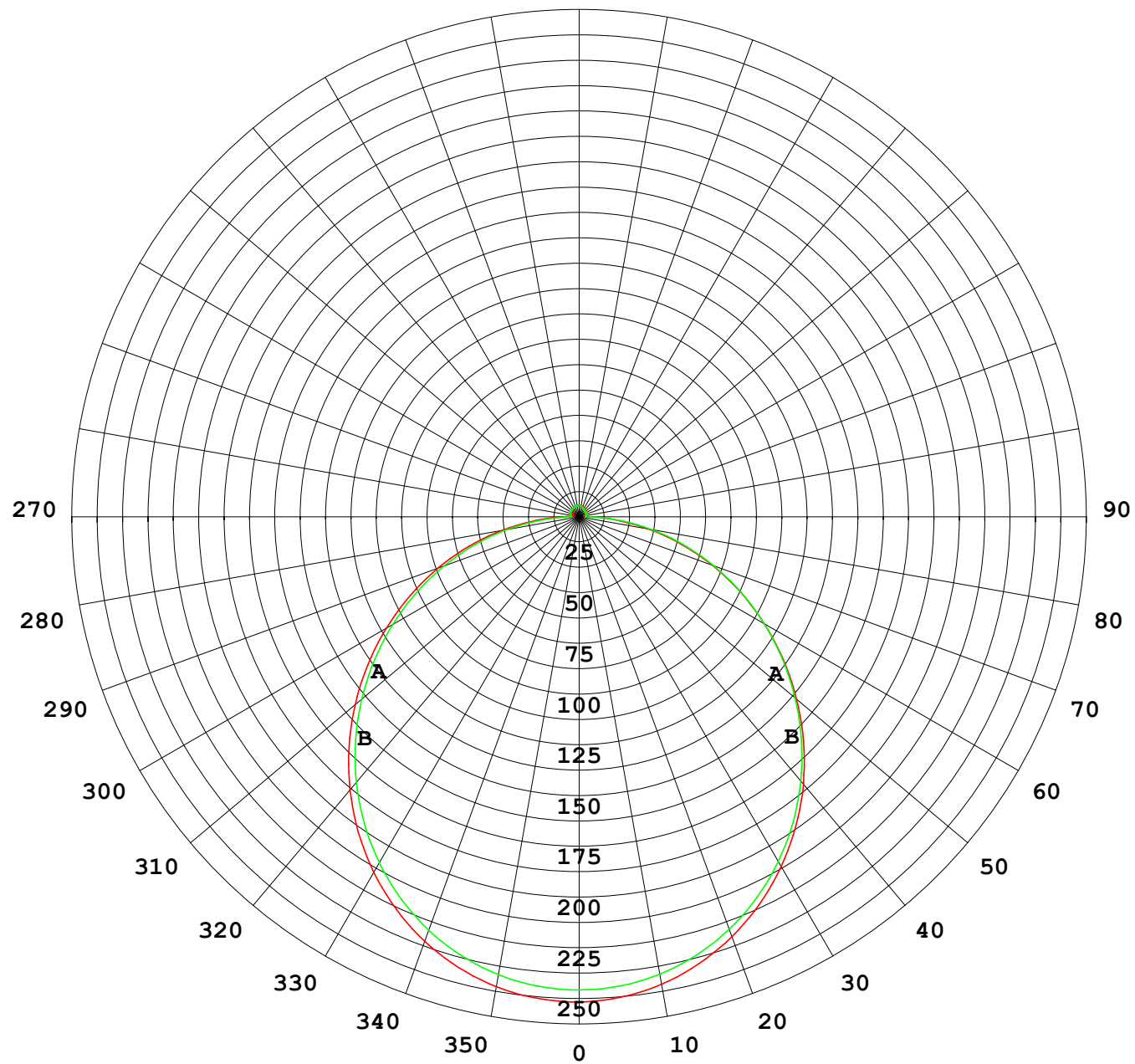
UNIT: cd

C (DEG) γ (DEG)	0	30	60	90	120	150	180	210	240	270	300	330						
0	234	234	234	234	234	234	234	234	234	234	234	234						
5	234	234	234	234	233	233	233	233	233	233	234	234						
10	231	231	231	230	230	230	229	229	230	230	231	231						
15	226	226	226	225	224	224	224	224	224	225	226	226						
20	218	219	218	218	217	216	216	216	217	218	218	219						
25	209	210	209	209	208	207	206	206	208	208	209	210						
30	199	199	199	198	197	196	195	195	197	197	199	199						
35	186	187	186	186	184	183	183	183	184	185	186	186						
40	172	174	172	172	170	169	169	168	170	171	172	173						
45	157	158	157	157	155	154	153	153	155	156	157	158						
50	141	142	141	141	139	138	137	137	139	140	141	142						
55	125	126	125	124	122	121	121	120	122	123	125	125						
60	108	108	107	107	105	104	103	103	105	106	108	108						
65	90.2	90.8	89.9	89.0	87.3	86.2	86.0	85.8	87.1	88.4	90.1	90.6						
70	72.6	73.0	72.2	71.2	69.6	68.6	68.5	68.4	69.6	71.0	72.5	73.1						
75	55.1	55.4	54.5	53.5	51.9	51.1	51.0	51.0	52.1	53.5	55.0	55.6						
80	37.6	37.8	36.8	35.9	34.4	33.6	33.7	33.7	34.8	36.3	37.7	38.2						
85	20.7	20.7	19.4	18.4	17.0	17.1	17.4	17.0	17.6	19.0	20.4	21.1						
90	8.86	8.40	6.25	4.08	5.27	6.62	6.75	6.16	4.80	3.55	6.12	8.49						
95	3.34	3.55	4.02	4.30	3.93	3.39	2.67	2.69	2.82	3.19	2.86	2.95						
100	3.19	3.61	4.13	4.51	4.10	3.56	2.80	2.77	2.93	3.37	2.93	2.82						
105	3.31	3.72	4.29	4.69	4.27	3.73	2.97	2.93	3.09	3.54	3.06	2.92						
110	3.47	3.86	4.44	4.84	4.43	3.90	3.13	3.11	3.26	3.69	3.23	3.06						
115	3.65	4.01	4.57	4.95	4.57	4.06	3.32	3.29	3.41	3.81	3.35	3.19						
120	3.84	4.18	4.67	5.02	4.69	4.21	3.49	3.48	3.58	3.86	3.41	3.41						
125	4.03	4.35	4.76	5.06	4.79	4.37	3.70	3.68	3.73	3.87	3.55	3.60						
130	4.23	4.50	4.84	5.10	4.88	4.53	3.90	3.88	3.89	3.89	3.69	3.80						
135	4.40	4.65	4.91	5.14	4.97	4.68	4.11	4.10	4.08	3.96	3.87	3.80						
140	4.58	4.78	4.99	5.19	5.05	4.82	4.32	4.32	4.29	4.11	4.07	4.00						
145	4.75	4.90	5.08	5.25	5.15	4.96	4.54	4.53	4.51	4.32	4.28	4.20						
150	4.91	5.03	5.18	5.33	5.25	5.09	4.74	4.74	4.73	4.58	4.51	4.41						
155	5.08	5.16	5.27	5.42	5.34	5.23	4.95	4.95	4.95	4.81	4.74	4.64						
160	5.25	5.30	5.36	5.51	5.42	5.38	5.15	5.15	5.17	5.04	5.01	4.85						
165	5.39	5.44	5.45	5.57	5.49	5.50	5.33	5.33	5.37	5.25	5.19	5.06						
170	5.52	5.56	5.53	5.62	5.58	5.59	5.51	5.48	5.55	5.43	5.38	5.27						
175	5.60	5.65	5.63	5.71	5.65	5.62	5.63	5.59	5.68	5.62	5.58	5.43						
180	5.65	5.70	5.70	5.75	5.68	5.60	5.69	5.65	5.73	5.71	5.71	5.57						

C Range: 0 - 360DEG
C Interval: 30.0DEG
Test Speed: HIGH
Temperature:25.3℃
Operators:
Test Date:2025-03-14

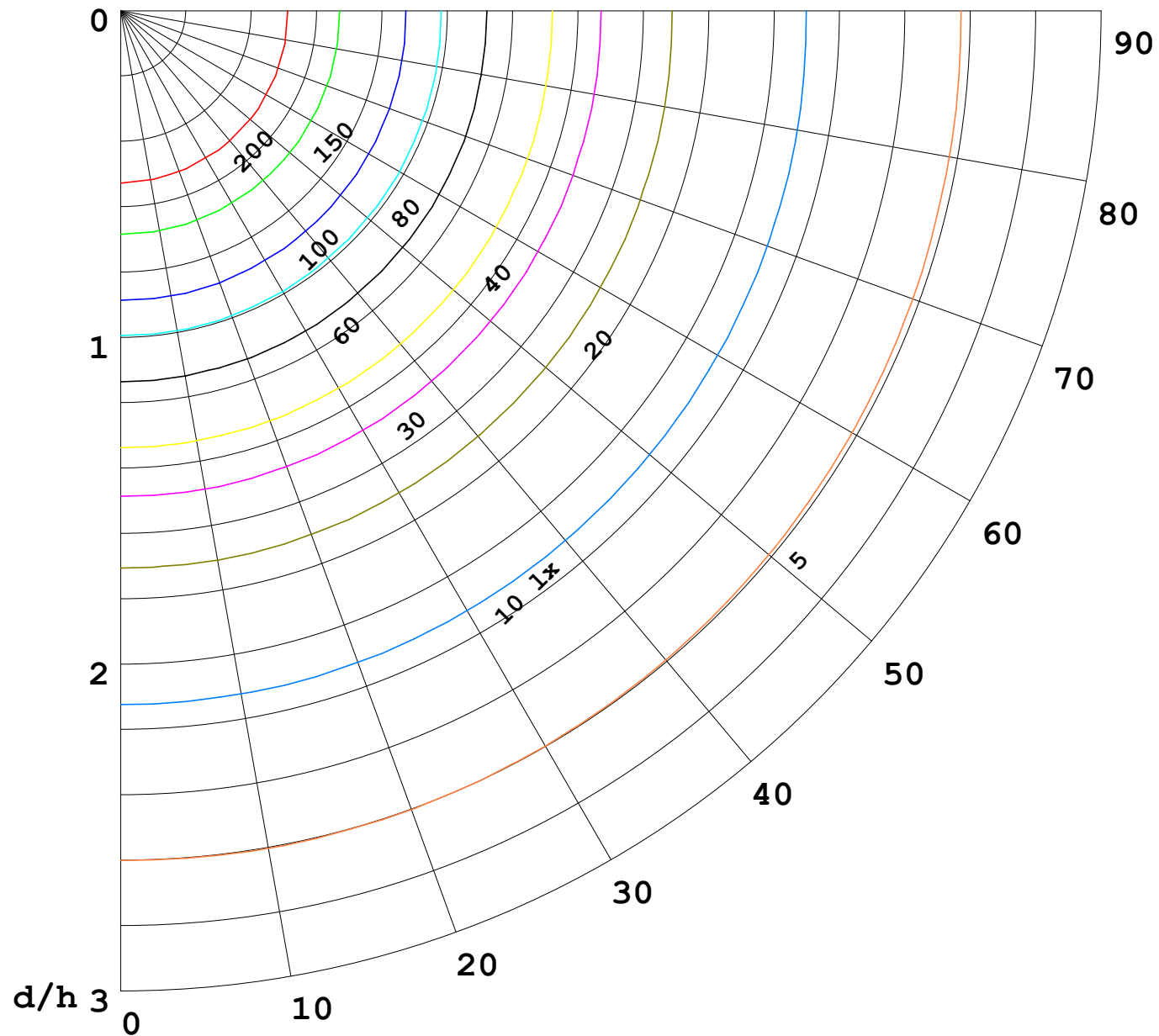
γ Range: 0 - 180DEG
γ Interval: 1.0DEG
Test System:EVERFINE GO-2000B_V1 SYSTEM V2.00.488
Humidity:65.0%
Test Distance:6.360m [K=1.0000]
Remarks:

I (cd)



1000 lm

$\kappa = 1$



F = 1000 lm
 K = 0.7
 Hcc = 0.8 m
 Hfc = 0.0 m
 Eave = 100 lx

	Pcc	Pw	Pfc
—————	70	50	30
—————	50	30	20

