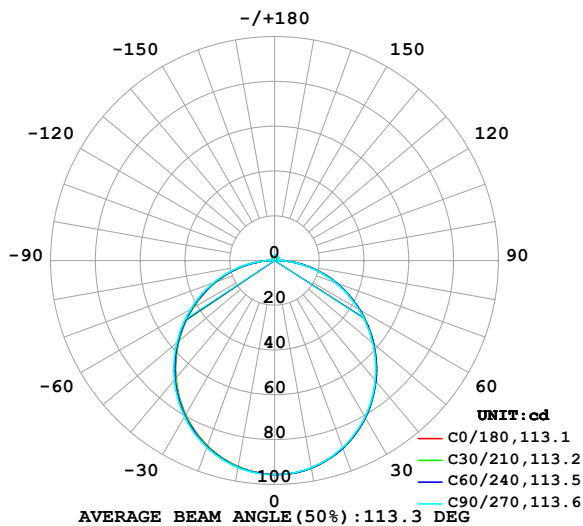


LUMINAIRE PHOTOMETRIC TEST REPORT

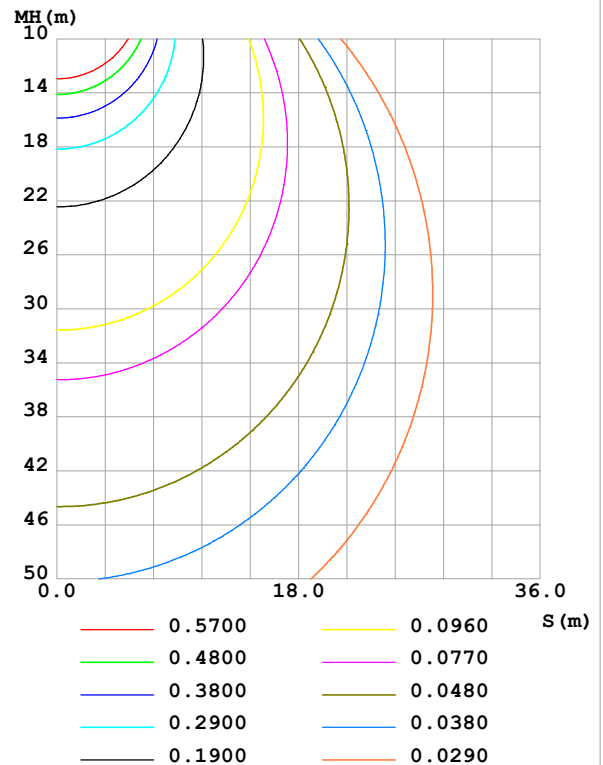
| | | |
|--|-----------------|------------------|
| Test:U:24.00V I:0.4011A P:9.626W PF:1.000 Freq:0Hz Lamp Flux:292.675x1 lm | | |
| NAME: SF10-24V-5050-84-SPI-RGBW(3000K)-G | TYPE: | WEIGHT: |
| SPEC.: | DIM.: Length=1m | SERIAL No.: |
| MFR.: OLympia lighting | SUR.: | Shielding Angle: |

| DATA OF LAMP | | PHOTOMETRIC DATA Eff: 30.40 lm/W | | | |
|------------------|---------|----------------------------------|--------|-------------------|----------|
| MODEL | 2835 | I _{max} (cd) | 95.60 | S/MH(C0/180) | 1.24 |
| NOMINAL POWER(W) | | LOR(%) | 100.0 | S/MH(C90/270) | 1.25 |
| RATED VOLTAGE(V) | 24 | TOTAL FLUX(lm) | 292.68 | η UP,DN(C0-180) | 1.9,48.3 |
| NOMINAL FLUX(lm) | 292.675 | CIE CLASS | DIRECT | η UP,DN(C180-360) | 1.6,48.1 |
| LAMPS INSIDE | 1 | η up(%) | 3.6 | CIBSE SHR NOM | 1.25 |
| TEST VOLTAGE(V) | | η down(%) | 96.4 | CIBSE SHR MAX | 1.35 |

LUMINOUS INTENSITY DISTRIBUTION DIAGRAM



C0 PLANE ISOLUX DIAGRAM (UNIT:lx)



C Range: 0 - 360DEG
C Interval: 30.0DEG
Test Speed: HIGH
Temperature:25.3℃
Operators:
Test Date:2025-03-14

γ Range: 0 - 180DEG
γ Interval: 1.0DEG
Test System:EVERFINE GO-2000B_V1 SYSTEM V2.00.488
Humidity:65.0%
Test Distance:6.360m [K=1.0000]
Remarks:

ZONAL FLUX DIAGRAM

ZONAL FLUX DIAGRAM:

| γ | C0 | C45 | C90 | C135 | C180 | C225 | C270 | C315 | γ | Φ zone | Φ total | %lum, lamp |
|----------|-----------------------|-------|-------|-------|-------|-------|-------|-------|----------|-------------|--------------|------------|
| 10 | 94.05 | 94.11 | 93.92 | 93.63 | 93.52 | 93.58 | 93.84 | 94.08 | 0- 10 | 9.041 | 9.041 | 3.09,3.09 |
| 20 | 89.07 | 89.15 | 88.83 | 88.30 | 88.02 | 88.24 | 88.74 | 89.13 | 10- 20 | 25.87 | 34.91 | 11.9,11.9 |
| 30 | 80.97 | 81.08 | 80.69 | 79.95 | 79.57 | 79.86 | 80.52 | 81.04 | 20- 30 | 39.14 | 74.05 | 25.3,25.3 |
| 40 | 70.30 | 70.38 | 69.91 | 69.05 | 68.62 | 68.95 | 69.74 | 70.36 | 30- 40 | 47.13 | 121.2 | 41.4,41.4 |
| 50 | 57.67 | 57.74 | 57.22 | 56.29 | 55.87 | 56.18 | 57.03 | 57.75 | 40- 50 | 49.00 | 170.2 | 58.1,58.1 |
| 60 | 43.84 | 43.87 | 43.34 | 42.41 | 42.08 | 42.35 | 43.21 | 43.94 | 50- 60 | 44.84 | 215.0 | 73.5,73.5 |
| 70 | 29.54 | 29.49 | 28.95 | 28.09 | 27.86 | 28.11 | 28.97 | 29.66 | 60- 70 | 35.64 | 250.7 | 85.6,85.6 |
| 80 | 15.29 | 15.12 | 14.56 | 13.80 | 13.73 | 13.98 | 14.84 | 15.43 | 70- 80 | 22.89 | 273.6 | 93.5,93.5 |
| 90 | 3.580 | 2.890 | 1.600 | 2.308 | 2.773 | 2.238 | 1.506 | 2.886 | 80- 90 | 8.638 | 282.2 | 96.4,96.4 |
| 100 | 1.271 | 1.521 | 1.779 | 1.501 | 1.125 | 1.146 | 1.409 | 1.159 | 90-100 | 1.657 | 283.8 | 97,97 |
| 110 | 1.387 | 1.639 | 1.912 | 1.644 | 1.266 | 1.283 | 1.533 | 1.263 | 100-110 | 1.499 | 285.3 | 97.5,97.5 |
| 120 | 1.539 | 1.755 | 1.990 | 1.767 | 1.410 | 1.420 | 1.594 | 1.380 | 110-120 | 1.528 | 286.9 | 98,98 |
| 130 | 1.698 | 1.857 | 2.024 | 1.877 | 1.577 | 1.564 | 1.591 | 1.510 | 120-130 | 1.482 | 288.4 | 98.5,98.5 |
| 140 | 1.839 | 1.955 | 2.073 | 1.976 | 1.739 | 1.732 | 1.660 | 1.636 | 130-140 | 1.364 | 289.7 | 99,99 |
| 150 | 1.978 | 2.048 | 2.140 | 2.077 | 1.912 | 1.912 | 1.848 | 1.806 | 140-150 | 1.188 | 290.9 | 99.4,99.4 |
| 160 | 2.110 | 2.152 | 2.232 | 2.175 | 2.073 | 2.078 | 2.030 | 1.998 | 150-160 | 0.9398 | 291.8 | 99.7,99.7 |
| 170 | 2.232 | 2.237 | 2.273 | 2.255 | 2.220 | 2.222 | 2.197 | 2.158 | 160-170 | 0.6120 | 292.5 | 99.9,99.9 |
| 180 | 2.278 | 2.292 | 2.307 | 2.285 | 2.281 | 2.292 | 2.304 | 2.278 | 170-180 | 0.2148 | 292.7 | 100,100 |
| DEG | LUMINOUS INTENSITY:cd | | | | | | | | | UNIT:lm | | |

Conical surface Flux(90deg): 145.84 lm

%lum = 49.8%

%lamp = 49.8%

Conical surface Flux(130deg): 234.25 lm

%lum = 80.0%

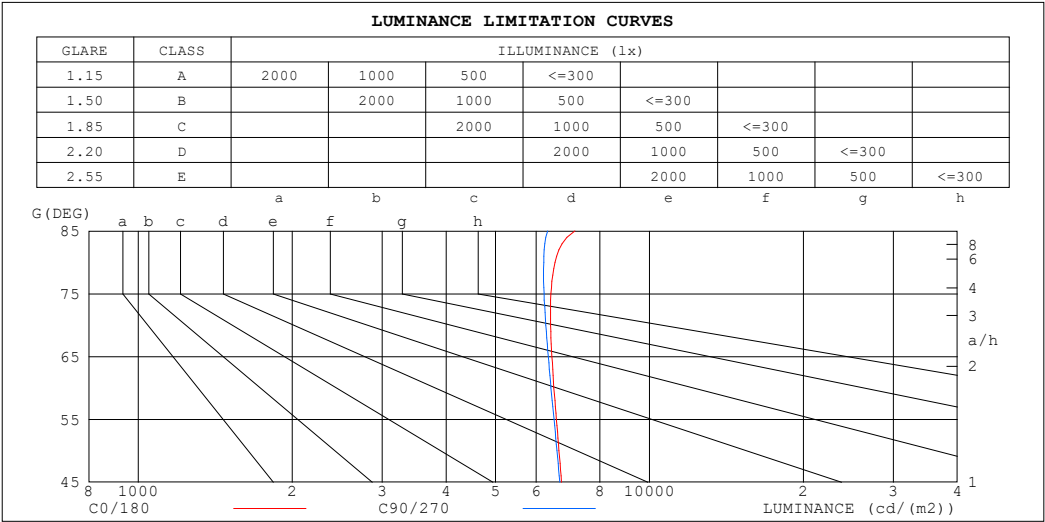
%lamp = 80.0%

C Range: 0 - 360DEG
 C Interval: 30.0DEG
 Test Speed: HIGH
 Temperature:25.3℃
 Operators:
 Test Date:2025-03-14

γ Range: 0 - 180DEG
 γ Interval: 1.0DEG
 Test System:EVERFINE GO-2000B_V1 SYSTEM V2.00.488
 Humidity:65.0%
 Test Distance:6.360m [K=1.0000]
 Remarks:

LUMINANCE LIMITATION CURVES

| | | |
|--|-----------------|------------------|
| Test:U:24.00V I:0.4011A P:9.626W PF:1.000 Freq:0Hz Lamp Flux:292.675x1 lm | | |
| NAME: SF10-24V-5050-84-SPI-RGBW(3000K)-G | TYPE: | WEIGHT: |
| SPEC.: | DIM.: Length=1m | SERIAL No.: |
| MFR.: OLympia lighting | SUR.: | Shielding Angle: |



| LUMINANCE cd/(m2) | | |
|-------------------|--------|---------|
| G (DEG) | C0/180 | C90/270 |
| 85 | 7145 | 6322 |
| 80 | 6530 | 6209 |
| 75 | 6416 | 6220 |
| 70 | 6405 | 6266 |
| 65 | 6442 | 6338 |
| 60 | 6501 | 6417 |
| 55 | 6575 | 6503 |
| 50 | 6653 | 6590 |
| 45 | 6729 | 6674 |

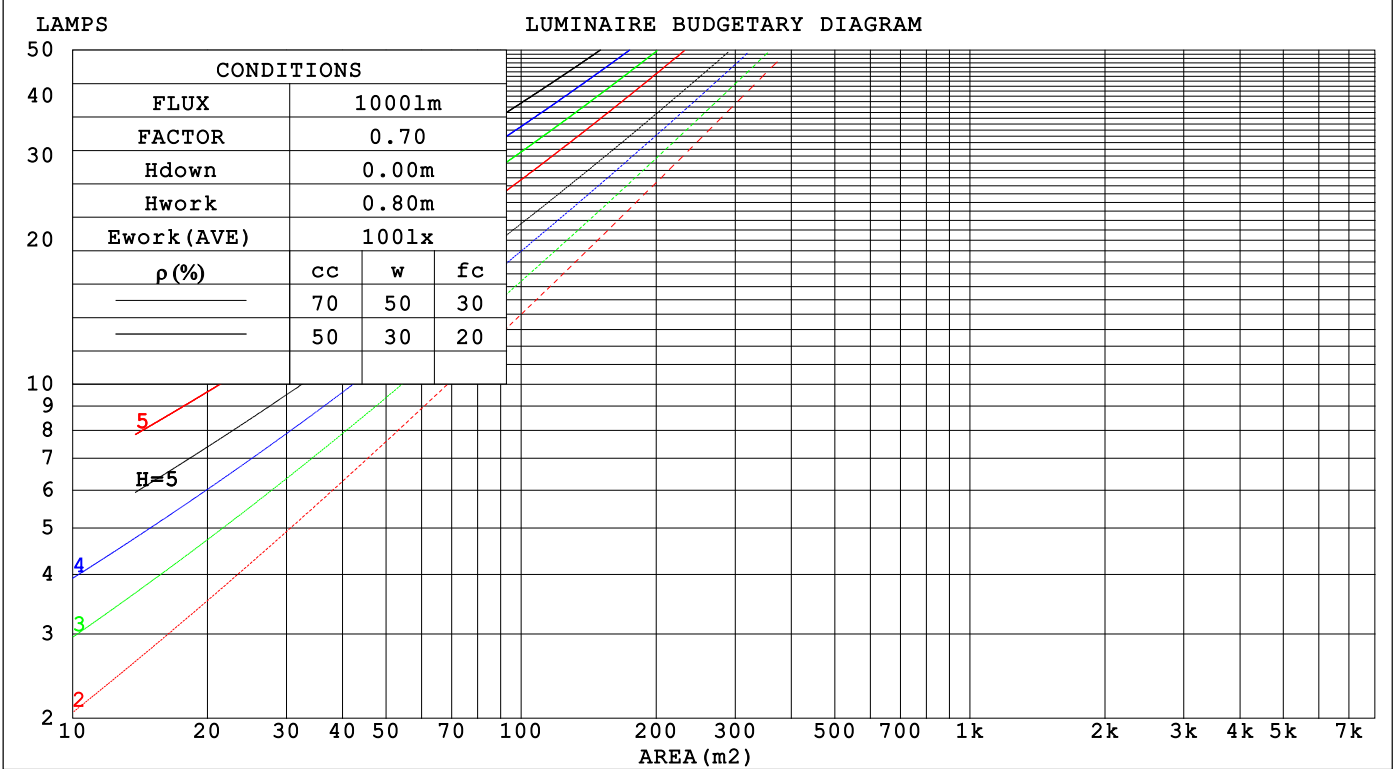
C Range: 0 - 360DEG
C Interval: 30.0DEG
Test Speed: HIGH
Temperature:25.3℃
Operators:
Test Date:2025-03-14

γ Range: 0 - 180DEG
γ Interval: 1.0DEG
Test System:EVERFINE GO-2000B_V1 SYSTEM V2.00.488
Humidity:65.0%
Test Distance:6.360m [K=1.0000]
Remarks:

CU AND LUMINAIRE BUDGETARY ESTIMATE DIAGRAM

| | | |
|--|-----------------|------------------|
| Test:U:24.00V I:0.4011A P:9.626W PF:1.000 Freq:0Hz Lamp Flux:292.675x1 lm | | |
| NAME: SF10-24V-5050-84-SPI-RGBW(3000K)-G | TYPE: | WEIGHT: |
| SPEC.: | DIM.: Length=1m | SERIAL No.: |
| MFR.: OLYMPIA lighting | SUR.: | Shielding Angle: |

| | | | | | | | | | | | | | | | | |
|-----------------|-----------------------|-----|-----|-----|-----|-----|-----|-----|-----|-----|-----|-----|-----|-----|-----|---|
| pcc | 80% | | | 70% | | | 50% | | | 30% | | | 10% | | | 0 |
| p _w | 50% | 30% | 10% | 50% | 30% | 10% | 50% | 30% | 10% | 50% | 30% | 10% | 50% | 30% | 10% | 0 |
| p _{fc} | 20% | | | 20% | | | 20% | | | 20% | | | 20% | | | 0 |
| RCR | RCR:Room Cavity Ratio | | | | | | | | | | | | | | | |



C Range: 0 - 360DEG
C Interval: 30.0DEG
Test Speed: HIGH
Temperature:25.3℃
Operators:
Test Date:2025-03-14

γ Range: 0 - 180DEG
γ Interval: 1.0DEG
Test System:EVERFINE GO-2000B_V1 SYSTEM V2.00.488
Humidity:65.0%
Test Distance:6.360m [K=1.0000]
Remarks:

WEC AND CCEC

| | | |
|--|-----------------|------------------|
| Test:U:24.00V I:0.4011A P:9.626W PF:1.000 Freq:0Hz Lamp Flux:292.675x1 lm | | |
| NAME: SF10-24V-5050-84-SPI-RGBW(3000K)-G | TYPE: | WEIGHT: |
| SPEC.: | DIM.: Length=1m | SERIAL No.: |
| MFR.: OLympia lighting | SUR.: | Shielding Angle: |

| pcc | 80% | | | 70% | | | 50% | | | 30% | | | 10% | | | 0 |
|------|-----------------------|------|------|------|------|------|---------------------------------|------|------|------|------|------|------|------|------|---|
| pw | 50% | 30% | 10% | 50% | 30% | 10% | 50% | 30% | 10% | 50% | 30% | 10% | 50% | 30% | 10% | 0 |
| pfc | 20% | | | 20% | | | 20% | | | 20% | | | 20% | | | 0 |
| RCR | RCR:Room Cavity Ratio | | | | | | Wall Exitance Coefficients(WEC) | | | | | | | | | |
| 0.0 | | | | | | | | | | | | | | | | |
| 1.0 | .326 | .185 | .059 | .318 | .181 | .058 | .302 | .173 | .055 | .288 | .166 | .053 | .275 | .159 | .051 | |
| 2.0 | .301 | .165 | .051 | .294 | .162 | .050 | .280 | .156 | .048 | .267 | .150 | .047 | .256 | .145 | .046 | |
| 3.0 | .276 | .147 | .044 | .269 | .144 | .043 | .257 | .139 | .042 | .246 | .135 | .041 | .235 | .130 | .040 | |
| 4.0 | .253 | .132 | .039 | .247 | .129 | .038 | .236 | .125 | .037 | .226 | .122 | .037 | .217 | .118 | .036 | |
| 5.0 | .233 | .119 | .034 | .228 | .117 | .034 | .218 | .114 | .033 | .209 | .110 | .033 | .201 | .107 | .032 | |
| 6.0 | .216 | .108 | .031 | .211 | .107 | .031 | .202 | .104 | .030 | .194 | .101 | .030 | .186 | .098 | .029 | |
| 7.0 | .200 | .099 | .028 | .196 | .098 | .028 | .188 | .095 | .027 | .181 | .093 | .027 | .174 | .090 | .027 | |
| 8.0 | .187 | .091 | .026 | .183 | .090 | .025 | .176 | .088 | .025 | .169 | .086 | .025 | .163 | .084 | .024 | |
| 9.0 | .175 | .084 | .024 | .171 | .083 | .023 | .165 | .082 | .023 | .159 | .080 | .023 | .153 | .078 | .022 | |
| 10.0 | .164 | .079 | .022 | .161 | .078 | .022 | .155 | .076 | .021 | .150 | .074 | .021 | .144 | .073 | .021 | |

| pcc | 80% | | | 70% | | | 50% | | | 30% | | | 10% | | | 0 |
|------|-----------------------|------|------|------|------|------|---|------|------|------|------|------|------|------|------|---|
| pw | 50% | 30% | 10% | 50% | 30% | 10% | 50% | 30% | 10% | 50% | 30% | 10% | 50% | 30% | 10% | 0 |
| pfc | 20% | | | 20% | | | 20% | | | 20% | | | 20% | | | 0 |
| RCR | RCR:Room Cavity Ratio | | | | | | Ceiling Cavity Exitance Coefficients (CCEC) | | | | | | | | | |
| 0.0 | .218 | .218 | .218 | .186 | .186 | .186 | .127 | .127 | .127 | .073 | .073 | .073 | .023 | .023 | .023 | |
| 1.0 | .209 | .184 | .161 | .179 | .158 | .138 | .122 | .108 | .096 | .070 | .063 | .056 | .023 | .020 | .018 | |
| 2.0 | .201 | .160 | .125 | .172 | .137 | .108 | .118 | .095 | .075 | .068 | .055 | .044 | .022 | .018 | .014 | |
| 3.0 | .193 | .142 | .101 | .166 | .123 | .088 | .114 | .085 | .062 | .066 | .050 | .036 | .021 | .016 | .012 | |
| 4.0 | .186 | .129 | .086 | .159 | .112 | .074 | .110 | .078 | .052 | .063 | .046 | .031 | .020 | .015 | .010 | |
| 5.0 | .178 | .119 | .075 | .153 | .103 | .065 | .105 | .072 | .046 | .061 | .042 | .027 | .020 | .014 | .009 | |
| 6.0 | .171 | .110 | .067 | .147 | .096 | .058 | .101 | .067 | .041 | .059 | .039 | .025 | .019 | .013 | .008 | |
| 7.0 | .164 | .104 | .061 | .141 | .090 | .053 | .098 | .063 | .038 | .057 | .037 | .023 | .018 | .012 | .007 | |
| 8.0 | .158 | .098 | .057 | .136 | .085 | .050 | .094 | .060 | .035 | .055 | .035 | .021 | .018 | .012 | .007 | |
| 9.0 | .151 | .093 | .053 | .131 | .081 | .047 | .090 | .057 | .033 | .053 | .033 | .020 | .017 | .011 | .007 | |
| 10.0 | .146 | .089 | .051 | .126 | .077 | .044 | .087 | .054 | .031 | .051 | .032 | .019 | .016 | .011 | .006 | |

C Range: 0 - 360DEG
C Interval: 30.0DEG
Test Speed: HIGH
Temperature:25.3℃
Operators:
Test Date:2025-03-14

γ Range: 0 - 180DEG
γ Interval: 1.0DEG
Test System:EVERFINE GO-2000B_V1 SYSTEM V2.00.488
Humidity:65.0%
Test Distance:6.360m [K=1.0000]
Remarks:

UGR(Unified Glare Rating) Table

| | | | | | | | | | | | |
|--|-----|------------------|------|------|------|-----------------|----------------|------------------|------|------|------|
| Test:U:24.00V I:0.4011A P:9.626W PF:1.000 Freq:0Hz Lamp Flux:292.675x1 lm | | | | | | | | | | | |
| NAME: SF10-24V-5050-84-SPI-RGBW(3000K)-G | | | | | | TYPE: | | WEIGHT: | | | |
| SPEC.: | | | | | | DIM.: Length=1m | | SERIAL No.: | | | |
| MFR.: OLympia lighting | | | | | | SUR.: | | Shielding Angle: | | | |
| ceiling/cavity | 0.7 | 0.7 | 0.5 | 0.5 | 0.3 | 0.7 | 0.7 | 0.5 | 0.5 | 0.3 | |
| walls | 0.5 | 0.3 | 0.5 | 0.3 | 0.3 | 0.5 | 0.3 | 0.5 | 0.3 | 0.3 | |
| working plane | 0.2 | 0.2 | 0.2 | 0.2 | 0.2 | 0.2 | 0.2 | 0.2 | 0.2 | 0.2 | |
| Room dimensions | | Viewed crosswise | | | | | Viewed endwise | | | | |
| x = 2H y = 2H | 2H | 22.7 | 24.2 | 23.0 | 24.5 | 24.8 | 22.7 | 24.2 | 23.0 | 24.4 | 24.7 |
| | 3H | 24.4 | 25.8 | 24.8 | 26.1 | 26.4 | 24.4 | 25.7 | 24.7 | 26.0 | 26.3 |
| | 4H | 25.2 | 26.5 | 25.6 | 26.8 | 27.2 | 25.1 | 26.4 | 25.5 | 26.7 | 27.1 |
| | 6H | 25.8 | 27.1 | 26.2 | 27.4 | 27.8 | 25.7 | 27.0 | 26.1 | 27.3 | 27.6 |
| | 8H | 26.1 | 27.3 | 26.5 | 27.7 | 28.0 | 26.0 | 27.1 | 26.3 | 27.5 | 27.9 |
| | 12H | 26.3 | 27.5 | 26.7 | 27.8 | 28.2 | 26.1 | 27.3 | 26.5 | 27.6 | 28.0 |
| 4H | 2H | 23.4 | 24.7 | 23.7 | 25.0 | 25.3 | 23.3 | 24.6 | 23.7 | 25.0 | 25.3 |
| | 3H | 25.3 | 26.4 | 25.7 | 26.8 | 27.2 | 25.2 | 26.4 | 25.6 | 26.7 | 27.1 |
| | 4H | 26.2 | 27.2 | 26.6 | 27.6 | 28.0 | 26.1 | 27.2 | 26.5 | 27.5 | 28.0 |
| | 6H | 27.0 | 27.9 | 27.4 | 28.3 | 28.8 | 26.9 | 27.8 | 27.3 | 28.2 | 28.7 |
| | 8H | 27.3 | 28.2 | 27.8 | 28.6 | 29.1 | 27.2 | 28.0 | 27.6 | 28.5 | 28.9 |
| | 12H | 27.6 | 28.4 | 28.1 | 28.9 | 29.3 | 27.4 | 28.2 | 27.9 | 28.7 | 29.2 |
| 8H | 4H | 26.5 | 27.4 | 27.0 | 27.8 | 28.3 | 26.4 | 27.3 | 26.9 | 27.8 | 28.2 |
| | 6H | 27.5 | 28.2 | 28.0 | 28.7 | 29.2 | 27.4 | 28.1 | 27.9 | 28.6 | 29.1 |
| | 8H | 28.0 | 28.6 | 28.5 | 29.1 | 29.6 | 27.8 | 28.5 | 28.3 | 29.0 | 29.5 |
| | 12H | 28.4 | 28.9 | 28.9 | 29.4 | 30.0 | 28.2 | 28.7 | 28.7 | 29.3 | 29.8 |
| 12H | 4H | 26.6 | 27.4 | 27.0 | 27.8 | 28.3 | 26.5 | 27.3 | 27.0 | 27.7 | 28.2 |
| | 6H | 27.6 | 28.3 | 28.1 | 28.8 | 29.3 | 27.5 | 28.2 | 28.0 | 28.6 | 29.2 |
| | 8H | 28.1 | 28.7 | 28.7 | 29.2 | 29.8 | 28.0 | 28.5 | 28.5 | 29.1 | 29.6 |
| Variations with the observer position at spacings(CIE Pub.117): | | | | | | | | | | | |
| S = 1.0H | | + 0.1 / - 0.2 | | | | | + 0.1 / - 0.2 | | | | |
| 1.5H | | + 0.2 / - 0.3 | | | | | + 0.2 / - 0.3 | | | | |
| 2.0H | | + 0.1 / - 0.3 | | | | | + 0.1 / - 0.3 | | | | |

CIE Pub.117, 292.7 lm Total Lamp Luminous Flux Correct (8log(F/F0) = -4.3)
Area: 0.0135 m2

C Range: 0 - 360DEG
C Interval: 30.0DEG
Test Speed: HIGH
Temperature:25.3℃
Operators:
Test Date:2025-03-14

γ Range: 0 - 180DEG
γ Interval: 1.0DEG
Test System:EVERFINE GO-2000B_V1 SYSTEM V2.00.488
Humidity:65.0%
Test Distance:6.360m [K=1.0000]
Remarks:

UTILIZATION FACTORS TABLE

| | | |
|--|-----------------|------------------|
| Test:U:24.00V I:0.4011A P:9.626W PF:1.000 Freq:0Hz Lamp Flux:292.675x1 lm | | |
| NAME: SF10-24V-5050-84-SPI-RGBW(3000K)-G | TYPE: | WEIGHT: |
| SPEC.: | DIM.: Length=1m | SERIAL No.: |
| MFR.: OLympia lighting | SUR.: | Shielding Angle: |

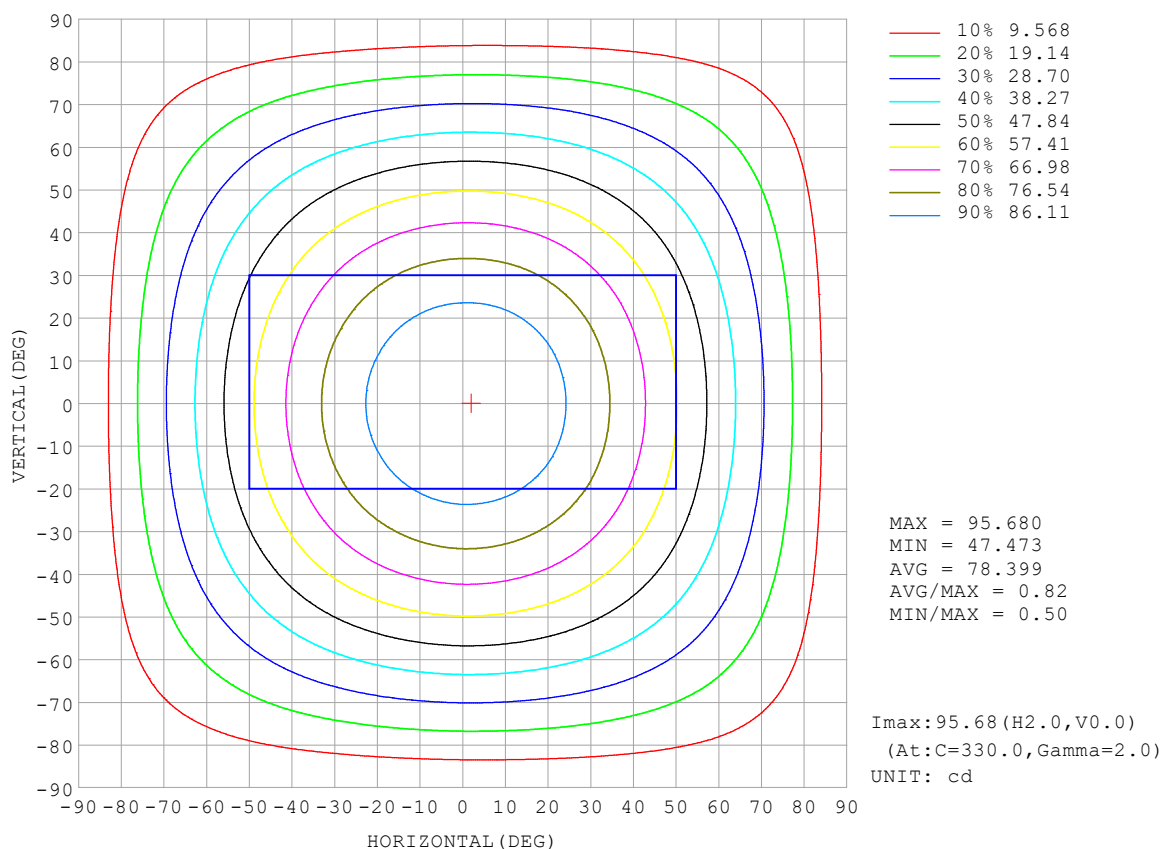
| REFLECTANCE | | | | | | | | | | |
|----------------------------------|--|-----|-----------|-----|-----|-----|-----|---------------|-----|--------|
| Ceiling | 0.8 | 0.8 | 0.8 | 0.7 | 0.7 | 0.7 | 0.5 | 0.5 | 0.5 | 0 |
| Walls | 0.7 | 0.5 | 0.3 | 0.7 | 0.5 | 0.3 | 0.7 | 0.5 | 0.3 | 0 |
| Working plane | 0.2 | 0.2 | 0.2 | 0.2 | 0.2 | 0.2 | 0.2 | 0.2 | 0.2 | 0 |
| ROOM INDEX | UTILIZATION FACTORS (PERCENT) $k(RI) \times RCR = 5$ | | | | | | | | | |
| $k = 0.60$ | 56 | 44 | 37 | 55 | 44 | 37 | 53 | 43 | 36 | 30 |
| 0.80 | 66 | 54 | 46 | 64 | 53 | 46 | 62 | 52 | 45 | 38 |
| 1.00 | 74 | 62 | 55 | 72 | 62 | 54 | 70 | 63 | 54 | 46 |
| 1.25 | 81 | 70 | 62 | 79 | 69 | 62 | 76 | 67 | 61 | 53 |
| 1.50 | 86 | 75 | 68 | 84 | 74 | 68 | 80 | 72 | 66 | 58 |
| 2.00 | 93 | 84 | 77 | 91 | 82 | 76 | 87 | 80 | 74 | 65 |
| 2.50 | 97 | 89 | 82 | 94 | 87 | 81 | 90 | 84 | 79 | 70 |
| 3.00 | 100 | 93 | 87 | 98 | 91 | 86 | 93 | 88 | 83 | 74 |
| 4.00 | 104 | 98 | 93 | 102 | 96 | 92 | 97 | 92 | 89 | 78 |
| 5.00 | 107 | 102 | 97 | 104 | 100 | 96 | 99 | 95 | 92 | 82 |
| ROOM INDEX | UF (total) | | | | | | | | | Direct |
| According to DIN EN 13032-2 2004 | | | Suspended | | | | | SHRNOM = 1.25 | | |

C Range: 0 - 360DEG
 C Interval: 30.0DEG
 Test Speed: HIGH
 Temperature: 25.3°C
 Operators:
 Test Date: 2025-03-14

γ Range: 0 - 180DEG
 γ Interval: 1.0DEG
 Test System: EVERFINE GO-2000B_V1 SYSTEM V2.00.488
 Humidity: 65.0%
 Test Distance: 6.360m [K=1.0000]
 Remarks:

ISOCANDELA DIAGRAM

| | | |
|--|-----------------|------------------|
| Test:U:24.00V I:0.4011A P:9.626W PF:1.000 Freq:0Hz Lamp Flux:292.675x1 lm | | |
| NAME: SF10-24V-5050-84-SPI-RGBW(3000K)-G | TYPE: | WEIGHT: |
| SPEC.: | DIM.: Length=1m | SERIAL No.: |
| MFR.: OLympia lighting | SUR.: | Shielding Angle: |

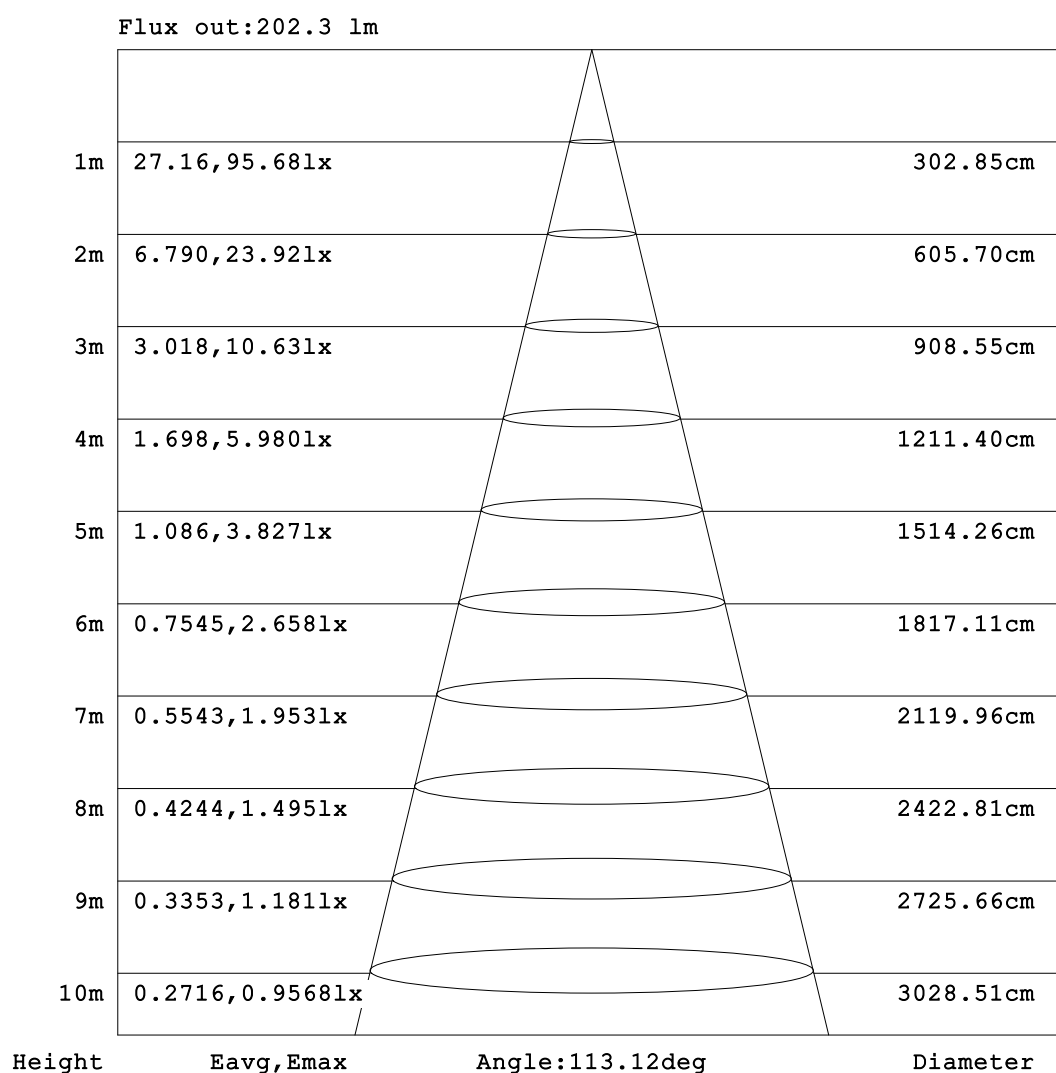


C Range: 0 - 360DEG
C Interval: 30.0DEG
Test Speed: HIGH
Temperature:25.3℃
Operators:
Test Date:2025-03-14

γ Range: 0 - 180DEG
γ Interval: 1.0DEG
Test System:EVERFINE GO-2000B_V1 SYSTEM V2.00.488
Humidity:65.0%
Test Distance:6.360m [K=1.0000]
Remarks:

AAI Figure

| | | |
|--|-----------------|------------------|
| Test:U:24.00V I:0.4011A P:9.626W PF:1.000 Freq:0Hz Lamp Flux:292.675x1 lm | | |
| NAME: SF10-24V-5050-84-SPI-RGBW(3000K)-G | TYPE: | WEIGHT: |
| SPEC.: | DIM.: Length=1m | SERIAL No.: |
| MFR.: OLympia lighting | SUR.: | Shielding Angle: |



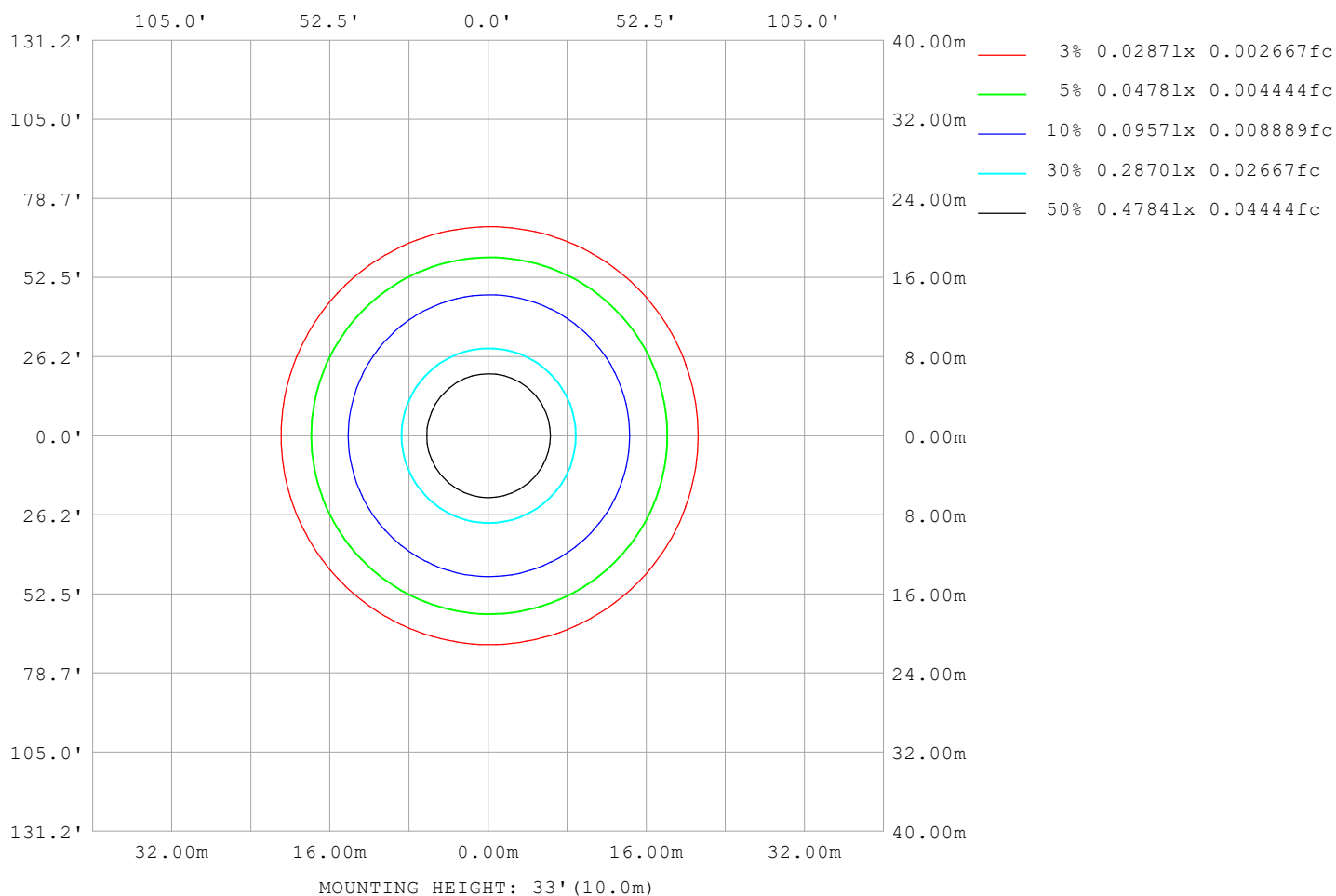
Note:The Curves indicate the illuminated area and the average illumination when the luminaire is at different distance.

C Range: 0 - 360DEG
C Interval: 30.0DEG
Test Speed: HIGH
Temperature:25.3℃
Operators:
Test Date:2025-03-14

γ Range: 0 - 180DEG
γ Interval: 1.0DEG
Test System:EVERFINE GO-2000B_V1 SYSTEM V2.00.488
Humidity:65.0%
Test Distance:6.360m [K=1.0000]
Remarks:

ISOLUX DIAGRAM

| | | |
|--|-----------------|------------------|
| Test:U:24.00V I:0.4011A P:9.626W PF:1.000 Freq:0Hz Lamp Flux:292.675x1 lm | | |
| NAME: SF10-24V-5050-84-SPI-RGBW(3000K)-G | TYPE: | WEIGHT: |
| SPEC.: | DIM.: Length=1m | SERIAL No.: |
| MFR.: OLympia lighting | SUR.: | Shielding Angle: |



C Range: 0 - 360DEG
C Interval: 30.0DEG
Test Speed: HIGH
Temperature: 25.3°C
Operators:
Test Date: 2025-03-14

γ Range: 0 - 180DEG
γ Interval: 1.0DEG
Test System: EVERFINE GO-2000B_V1 SYSTEM V2.00.488
Humidity: 65.0%
Test Distance: 6.360m [K=1.0000]
Remarks:

LED Avg.L Report

| | | |
|--|-----------------|------------------|
| Test:U:24.00V I:0.4011A P:9.626W PF:1.000 Freq:0Hz Lamp Flux:292.675x1 lm | | |
| NAME: SF10-24V-5050-84-SPI-RGBW(3000K)-G | TYPE: | WEIGHT: |
| SPEC.: | DIM.: Length=1m | SERIAL No.: |
| MFR.: OLympia lighting | SUR.: | Shielding Angle: |

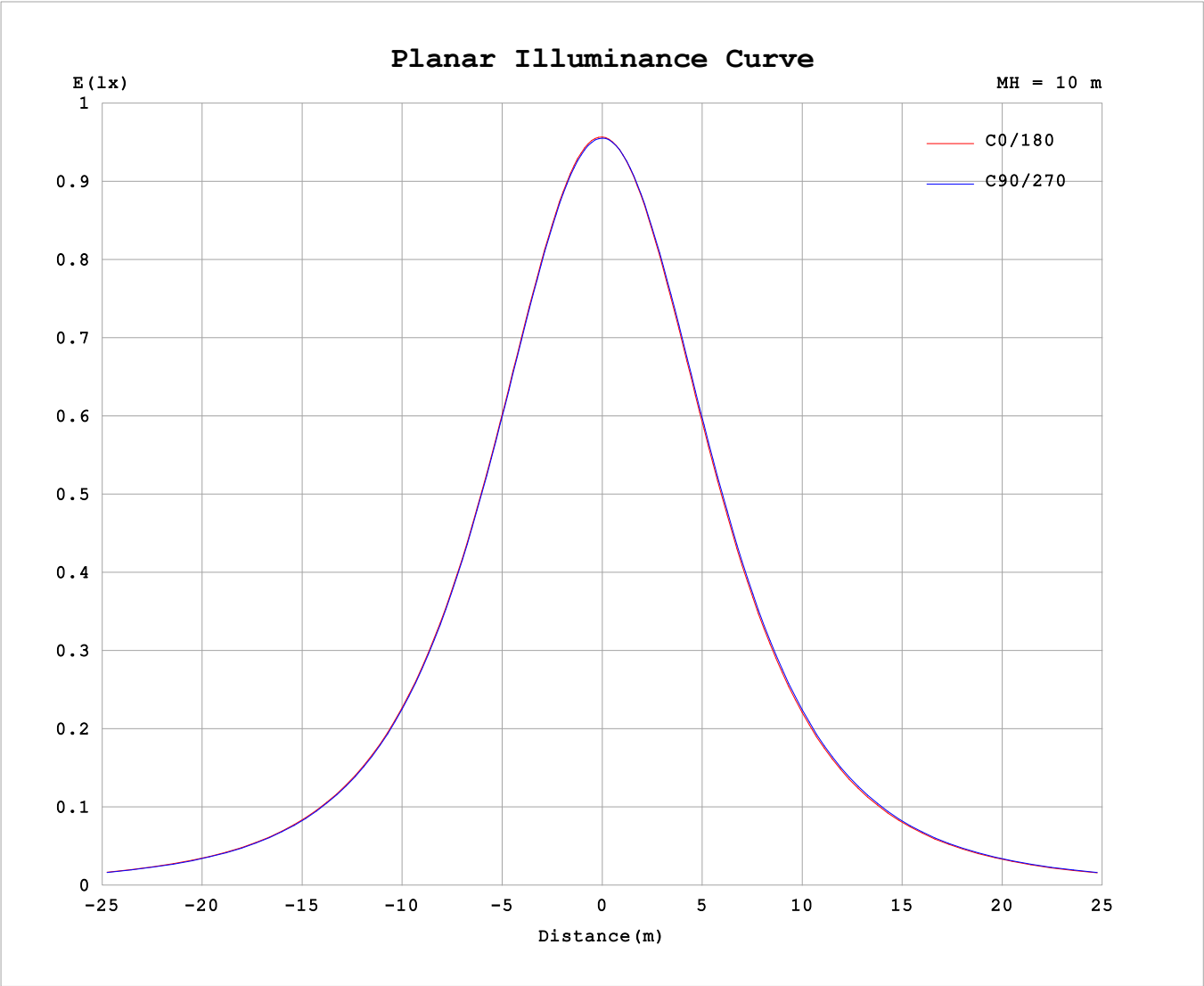
| AvgL | cd/m2 |
|------------------|-------|
| L_0~180 (65) av | 6283 |
| L_0~180 (75) av | 6178 |
| L_0~180 (85) av | 6590 |
| L_90~270 (65) av | 6335 |
| L_90~270 (75) av | 6243 |
| L_90~270 (85) av | 6489 |
| L_45 (65) av | 6313 |
| L_45 (75) av | 6209 |
| L_45 (85) av | 6465 |

Standard: GB/T 29293-2012

C Range: 0 - 360DEG
C Interval: 30.0DEG
Test Speed: HIGH
Temperature:25.3℃
Operators:
Test Date:2025-03-14

γ Range: 0 - 180DEG
γ Interval: 1.0DEG
Test System:EVERFINE GO-2000B_V1 SYSTEM V2.00.488
Humidity:65.0%
Test Distance:6.360m [K=1.0000]
Remarks:

Planar Illuminance Curve



| | |
|----------------------|---|
| C Range: 0 - 360DEG | γ Range: 0 - 180DEG |
| C Interval: 30.0DEG | γ Interval: 1.0DEG |
| Test Speed: HIGH | Test System:EVERFINE GO-2000B_V1 SYSTEM V2.00.488 |
| Temperature:25.3℃ | Humidity:65.0% |
| Operators: | Test Distance:6.360m [K=1.0000] |
| Test Date:2025-03-14 | Remarks: |

LUMINOUS DISTRIBUTION INTENSITY DATA

| | | |
|--|-----------------|------------------|
| Test:U:24.00V I:0.4011A P:9.626W PF:1.000 Freq:0Hz Lamp Flux:292.675x1 lm | | |
| NAME: SF10-24V-5050-84-SPI-RGBW(3000K)-G | TYPE: | WEIGHT: |
| SPEC.: | DIM.: Length=1m | SERIAL No.: |
| MFR.: Olym pia lighting | SUR.: | Shielding Angle: |

Table--1

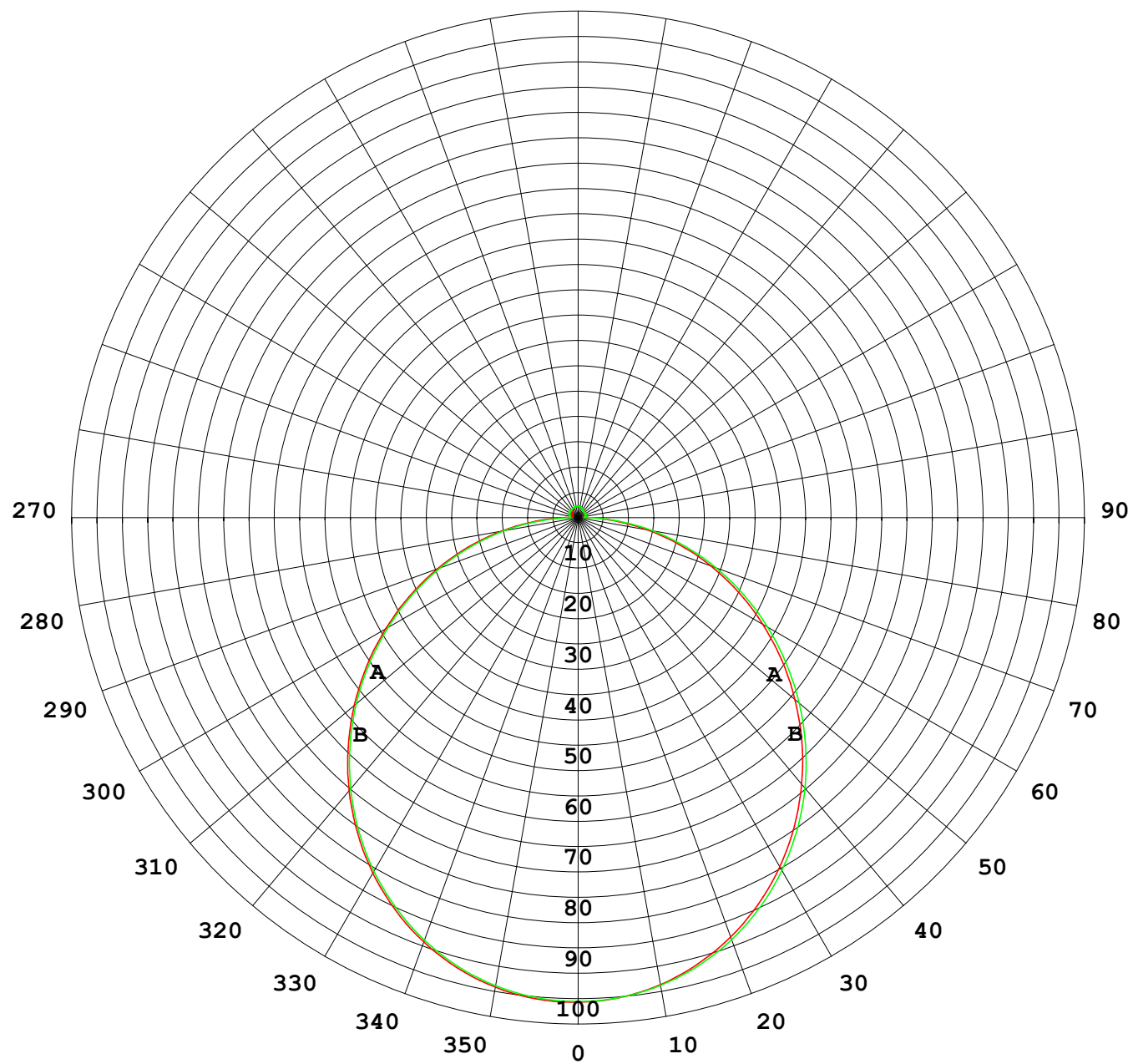
UNIT: cd

| C (DEG) γ (DEG) | 0 | 30 | 60 | 90 | 120 | 150 | 180 | 210 | 240 | 270 | 300 | 330 | | | | | | |
|--------------------|------|------|------|------|------|------|------|------|------|------|------|------|--|--|--|--|--|--|
| 0 | 95.6 | 95.6 | 95.6 | 95.6 | 95.6 | 95.6 | 95.6 | 95.6 | 95.6 | 95.6 | 95.6 | 95.6 | | | | | | |
| 5 | 95.3 | 95.3 | 95.3 | 95.2 | 95.1 | 95.0 | 95.0 | 95.0 | 95.1 | 95.2 | 95.2 | 95.3 | | | | | | |
| 10 | 94.0 | 94.1 | 94.1 | 93.9 | 93.7 | 93.6 | 93.5 | 93.5 | 93.7 | 93.8 | 94.0 | 94.1 | | | | | | |
| 15 | 92.0 | 92.1 | 92.0 | 91.8 | 91.5 | 91.3 | 91.2 | 91.2 | 91.5 | 91.7 | 92.0 | 92.1 | | | | | | |
| 20 | 89.1 | 89.2 | 89.1 | 88.8 | 88.5 | 88.1 | 88.0 | 88.1 | 88.4 | 88.7 | 89.1 | 89.2 | | | | | | |
| 25 | 85.4 | 85.5 | 85.4 | 85.1 | 84.7 | 84.3 | 84.1 | 84.2 | 84.6 | 85.0 | 85.4 | 85.5 | | | | | | |
| 30 | 81.0 | 81.2 | 81.0 | 80.7 | 80.2 | 79.7 | 79.6 | 79.6 | 80.1 | 80.5 | 81.0 | 81.1 | | | | | | |
| 35 | 75.9 | 76.1 | 75.9 | 75.6 | 75.0 | 74.6 | 74.4 | 74.4 | 74.9 | 75.4 | 75.9 | 76.1 | | | | | | |
| 40 | 70.3 | 70.5 | 70.3 | 69.9 | 69.3 | 68.8 | 68.6 | 68.7 | 69.2 | 69.7 | 70.3 | 70.5 | | | | | | |
| 45 | 64.2 | 64.3 | 64.2 | 63.7 | 63.1 | 62.6 | 62.4 | 62.5 | 63.0 | 63.6 | 64.2 | 64.3 | | | | | | |
| 50 | 57.7 | 57.8 | 57.6 | 57.2 | 56.6 | 56.0 | 55.9 | 55.9 | 56.5 | 57.0 | 57.6 | 57.9 | | | | | | |
| 55 | 50.9 | 51.0 | 50.8 | 50.4 | 49.7 | 49.2 | 49.1 | 49.1 | 49.6 | 50.2 | 50.8 | 51.1 | | | | | | |
| 60 | 43.8 | 44.0 | 43.8 | 43.3 | 42.7 | 42.2 | 42.1 | 42.1 | 42.6 | 43.2 | 43.8 | 44.1 | | | | | | |
| 65 | 36.7 | 36.8 | 36.6 | 36.2 | 35.5 | 35.0 | 35.0 | 35.0 | 35.5 | 36.1 | 36.7 | 36.9 | | | | | | |
| 70 | 29.5 | 29.6 | 29.4 | 28.9 | 28.3 | 27.9 | 27.9 | 27.9 | 28.4 | 29.0 | 29.5 | 29.8 | | | | | | |
| 75 | 22.4 | 22.5 | 22.1 | 21.7 | 21.1 | 20.8 | 20.8 | 20.8 | 21.2 | 21.9 | 22.4 | 22.6 | | | | | | |
| 80 | 15.3 | 15.3 | 14.9 | 14.6 | 14.0 | 13.7 | 13.7 | 13.8 | 14.2 | 14.8 | 15.3 | 15.6 | | | | | | |
| 85 | 8.40 | 8.32 | 7.85 | 7.44 | 6.90 | 6.87 | 7.11 | 6.94 | 7.20 | 7.83 | 8.30 | 8.55 | | | | | | |
| 90 | 3.58 | 3.32 | 2.46 | 1.60 | 2.03 | 2.58 | 2.77 | 2.50 | 1.97 | 1.51 | 2.44 | 3.33 | | | | | | |
| 95 | 1.35 | 1.39 | 1.57 | 1.70 | 1.52 | 1.34 | 1.07 | 1.09 | 1.15 | 1.34 | 1.17 | 1.15 | | | | | | |
| 100 | 1.27 | 1.43 | 1.61 | 1.78 | 1.59 | 1.41 | 1.12 | 1.09 | 1.20 | 1.41 | 1.20 | 1.11 | | | | | | |
| 105 | 1.33 | 1.47 | 1.67 | 1.86 | 1.67 | 1.48 | 1.19 | 1.17 | 1.27 | 1.48 | 1.25 | 1.16 | | | | | | |
| 110 | 1.39 | 1.53 | 1.74 | 1.91 | 1.74 | 1.55 | 1.27 | 1.24 | 1.33 | 1.53 | 1.32 | 1.20 | | | | | | |
| 115 | 1.46 | 1.60 | 1.80 | 1.96 | 1.80 | 1.62 | 1.34 | 1.32 | 1.39 | 1.58 | 1.36 | 1.29 | | | | | | |
| 120 | 1.54 | 1.67 | 1.84 | 1.99 | 1.85 | 1.69 | 1.41 | 1.39 | 1.45 | 1.59 | 1.39 | 1.37 | | | | | | |
| 125 | 1.62 | 1.74 | 1.88 | 2.01 | 1.89 | 1.75 | 1.49 | 1.47 | 1.51 | 1.59 | 1.44 | 1.44 | | | | | | |
| 130 | 1.70 | 1.80 | 1.91 | 2.02 | 1.93 | 1.82 | 1.58 | 1.55 | 1.57 | 1.59 | 1.50 | 1.52 | | | | | | |
| 135 | 1.77 | 1.86 | 1.95 | 2.04 | 1.97 | 1.88 | 1.66 | 1.64 | 1.65 | 1.60 | 1.57 | 1.53 | | | | | | |
| 140 | 1.84 | 1.92 | 1.99 | 2.07 | 2.01 | 1.94 | 1.74 | 1.73 | 1.73 | 1.66 | 1.65 | 1.62 | | | | | | |
| 145 | 1.91 | 1.97 | 2.03 | 2.10 | 2.06 | 2.00 | 1.83 | 1.82 | 1.82 | 1.74 | 1.74 | 1.70 | | | | | | |
| 150 | 1.98 | 2.02 | 2.07 | 2.14 | 2.10 | 2.06 | 1.91 | 1.91 | 1.91 | 1.85 | 1.83 | 1.78 | | | | | | |
| 155 | 2.05 | 2.08 | 2.13 | 2.19 | 2.15 | 2.11 | 2.00 | 1.99 | 2.01 | 1.95 | 1.93 | 1.87 | | | | | | |
| 160 | 2.11 | 2.14 | 2.16 | 2.23 | 2.18 | 2.17 | 2.07 | 2.07 | 2.09 | 2.03 | 2.04 | 1.96 | | | | | | |
| 165 | 2.18 | 2.19 | 2.20 | 2.25 | 2.21 | 2.22 | 2.15 | 2.14 | 2.17 | 2.12 | 2.11 | 2.04 | | | | | | |
| 170 | 2.23 | 2.24 | 2.23 | 2.27 | 2.25 | 2.26 | 2.22 | 2.20 | 2.24 | 2.20 | 2.18 | 2.14 | | | | | | |
| 175 | 2.26 | 2.28 | 2.27 | 2.30 | 2.28 | 2.27 | 2.27 | 2.25 | 2.29 | 2.26 | 2.26 | 2.20 | | | | | | |
| 180 | 2.28 | 2.28 | 2.30 | 2.31 | 2.30 | 2.27 | 2.28 | 2.28 | 2.30 | 2.30 | 2.30 | 2.25 | | | | | | |

C Range: 0 - 360DEG
C Interval: 30.0DEG
Test Speed: HIGH
Temperature:25.3℃
Operators:
Test Date:2025-03-14

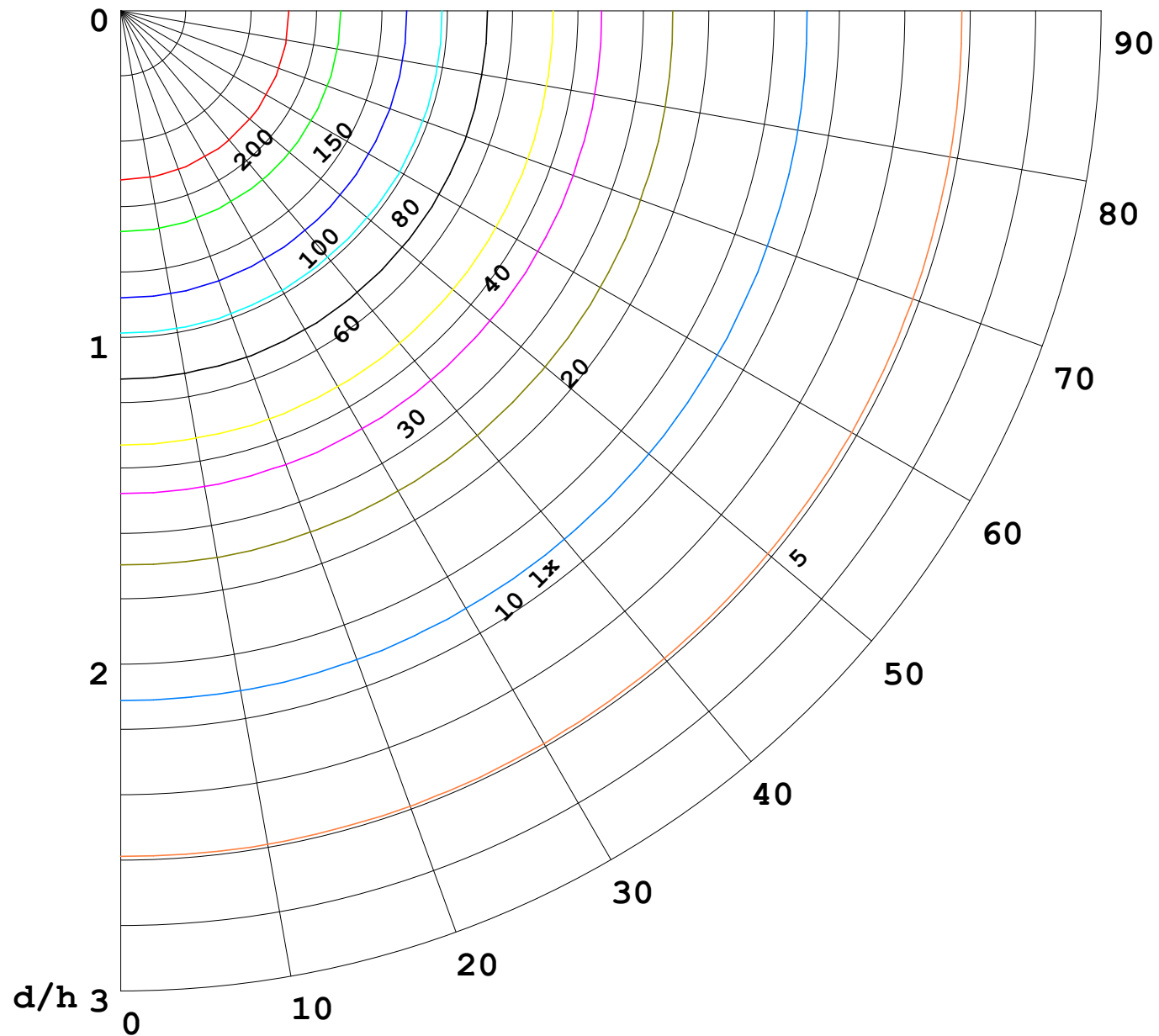
γ Range: 0 - 180DEG
γ Interval: 1.0DEG
Test System:EVERFINE GO-2000B_V1 SYSTEM V2.00.488
Humidity:65.0%
Test Distance:6.360m [K=1.0000]
Remarks:

I (cd)



1000 lm

$\kappa = 1$



F = 1000 lm
 K = 0.7
 Hcc = 0.8 m
 Hfc = 0.0 m
 Eave = 100 lx

| | Pcc | Pw | Pfc |
|-------|-----|----|-----|
| ————— | 70 | 50 | 30 |
| ————— | 50 | 30 | 20 |

