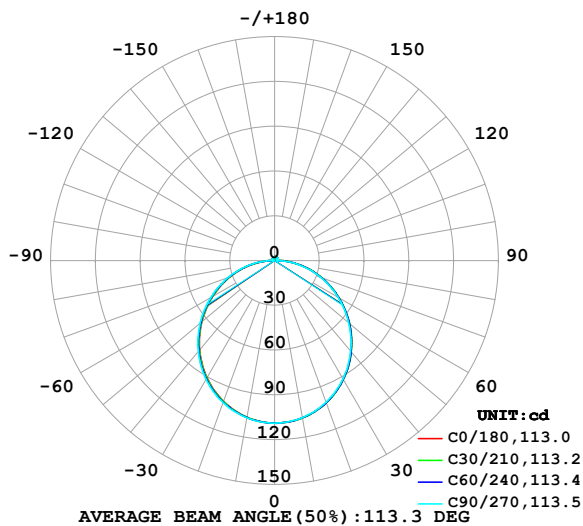


## LUMINAIRE PHOTOMETRIC TEST REPORT

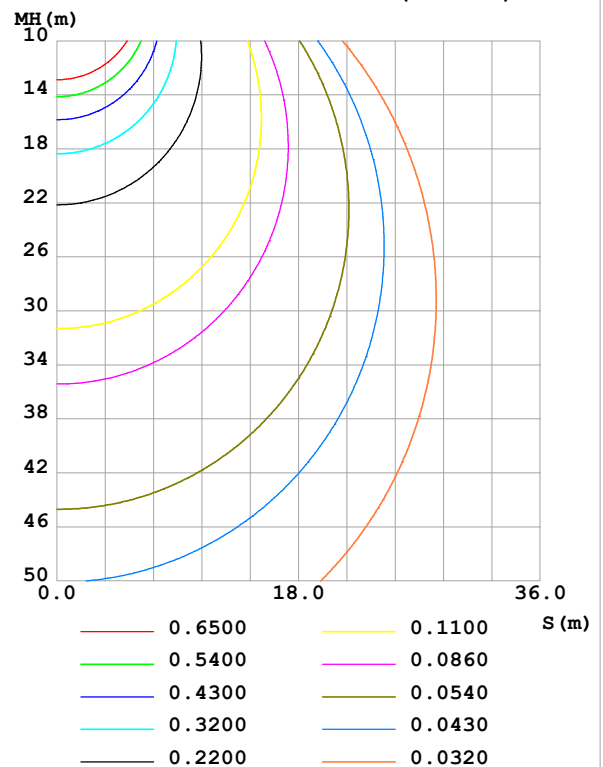
Test:U:24.00V I:0.2835A P:6.804W PF:1.000 Freq:0Hz Lamp Flux:333.143x1 lm		
NAME: SF10-24V-5050-84-SPI-RGBW(4000K)-W	TYPE:	WEIGHT:
SPEC.:	DIM.: Length=1m	SERIAL No.:
MFR.: OLympia lighting	SUR.:	Shielding Angle:

DATA OF LAMP		PHOTOMETRIC DATA Eff: 48.96 lm/W			
MODEL	2835	I <sub>max</sub> (cd)	108.9	S/MH(C0/180)	1.24
NOMINAL POWER(W)		LOR(%)	100.0	S/MH(C90/270)	1.26
RATED VOLTAGE(V)	24	TOTAL FLUX(lm)	333.14	η UP,DN(C0-180)	1.9,48.2
NOMINAL FLUX(lm)	333.143	CIE CLASS	DIRECT	η UP,DN(C180-360)	1.7,48.2
LAMPS INSIDE	1	η up (%)	3.6	CIBSE SHR NOM	1.25
TEST VOLTAGE(V)		η down (%)	96.4	CIBSE SHR MAX	1.35

LUMINOUS INTENSITY DISTRIBUTION DIAGRAM



C0 PLANE ISOLUX DIAGRAM (UNIT:lx)



C Range: 0 - 360DEG  
C Interval: 30.0DEG  
Test Speed: HIGH  
Temperature: 25.3 °C  
Operators:  
Test Date: 2025-03-15

γ Range: 0 - 180DEG  
γ Interval: 1.0DEG  
Test System: EVERFINE GO-2000B\_V1 SYSTEM V2.00.488  
Humidity: 65.0%  
Test Distance: 6.360m [K=1.0000]  
Remarks:

## ZONAL FLUX DIAGRAM

## ZONAL FLUX DIAGRAM:

$\gamma$	C0	C45	C90	C135	C180	C225	C270	C315	$\gamma$	$\Phi$ zone	$\Phi$ total	%lum,lamp
10	107.1	107.1	106.9	106.6	106.6	106.7	107.0	107.2	0- 10	10.30	10.30	3.09,3.09
20	101.3	101.3	101.0	100.5	100.3	100.7	101.2	101.5	10- 20	29.46	39.76	11.9,11.9
30	92.07	92.06	91.62	90.94	90.69	91.19	91.91	92.34	20- 30	44.57	84.33	25.3,25.3
40	79.89	79.84	79.31	78.49	78.18	78.78	79.67	80.18	30- 40	53.66	138.0	41.4,41.4
50	65.50	65.45	64.87	63.95	63.63	64.22	65.19	65.81	40- 50	55.76	193.7	58.2,58.2
60	49.80	49.73	49.13	48.12	47.87	48.41	49.37	50.10	50- 60	51.02	244.8	73.5,73.5
70	33.58	33.47	32.85	31.85	31.65	32.13	33.04	33.83	60- 70	40.55	285.3	85.6,85.6
80	17.43	17.23	16.57	15.64	15.54	15.94	16.77	17.61	70- 80	26.05	311.4	93.5,93.5
90	3.952	3.153	1.751	2.591	3.056	2.509	1.517	3.233	80- 90	9.790	321.1	96.4,96.4
100	1.439	1.609	1.771	1.717	1.326	1.425	1.529	1.410	90-100	1.858	323.0	97,97
110	1.617	1.674	1.826	1.851	1.486	1.586	1.690	1.563	100-110	1.689	324.7	97.5,97.5
120	1.786	1.770	1.987	1.985	1.652	1.745	1.820	1.708	110-120	1.720	326.4	98,98
130	1.966	1.979	2.140	2.120	1.833	1.912	1.955	1.861	120-130	1.690	328.1	98.5,98.5
140	2.127	2.166	2.278	2.259	2.019	2.087	2.096	2.014	130-140	1.586	329.7	99,99
150	2.275	2.337	2.433	2.402	2.212	2.262	2.283	2.183	140-150	1.388	331.1	99.4,99.4
160	2.450	2.485	2.569	2.540	2.398	2.430	2.436	2.378	150-160	1.099	332.2	99.7,99.7
170	2.558	2.612	2.652	2.639	2.541	2.576	2.583	2.556	160-170	0.7151	332.9	99.9,99.9
180	2.628	2.660	2.681	2.673	2.616	2.663	2.687	2.670	170-180	0.2503	333.1	100,100
DEG	LUMINOUS INTENSITY:cd									UNIT:lm		

Conical surface Flux(90deg): 166.05 lm

%lum = 49.8%

%lamp = 49.8%

Conical surface Flux(130deg): 266.65 lm

%lum = 80.0%

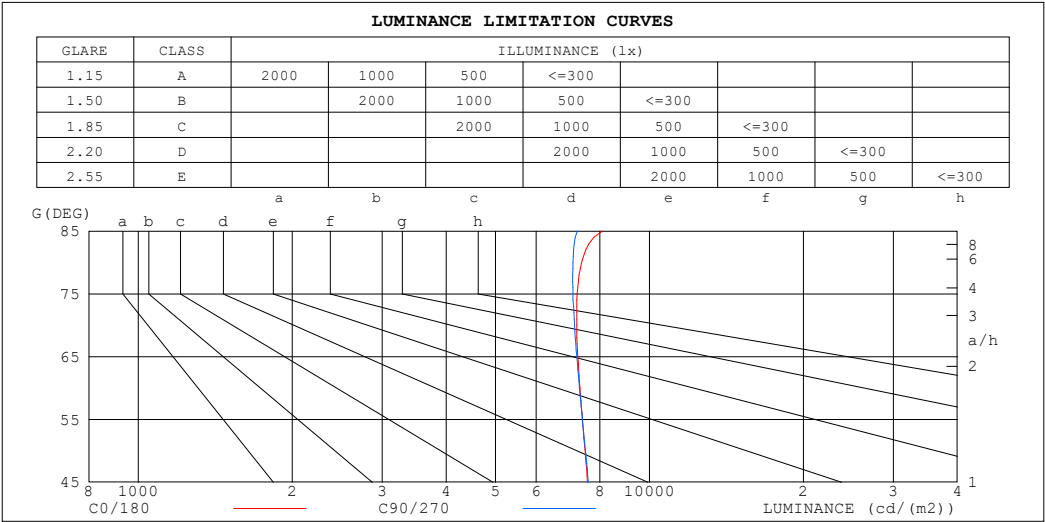
%lamp = 80.0%

C Range: 0 - 360DEG  
 C Interval: 30.0DEG  
 Test Speed: HIGH  
 Temperature:25.3℃  
 Operators:  
 Test Date:2025-03-15

$\gamma$  Range: 0 - 180DEG  
 $\gamma$  Interval: 1.0DEG  
 Test System:EVERFINE GO-2000B\_V1 SYSTEM V2.00.488  
 Humidity:65.0%  
 Test Distance:6.360m [K=1.0000]  
 Remarks:

LUMINANCE LIMITATION CURVES

Test:U:24.00V I:0.2835A P:6.804W PF:1.000 Freq:0Hz Lamp Flux:333.143x1 lm		
NAME: SF10-24V-5050-84-SPI-RGBW(4000K)-W	TYPE:	WEIGHT:
SPEC.:	DIM.: Length=1m	SERIAL No.:
MFR.: OLympia lighting	SUR.:	Shielding Angle:



LUMINANCE cd/(m2)		
G (DEG)	C0/180	C90/270
85	8090	7225
80	7366	7083
75	7222	7087
70	7205	7130
65	7240	7206
60	7308	7296
55	7390	7392
50	7478	7492
45	7564	7592

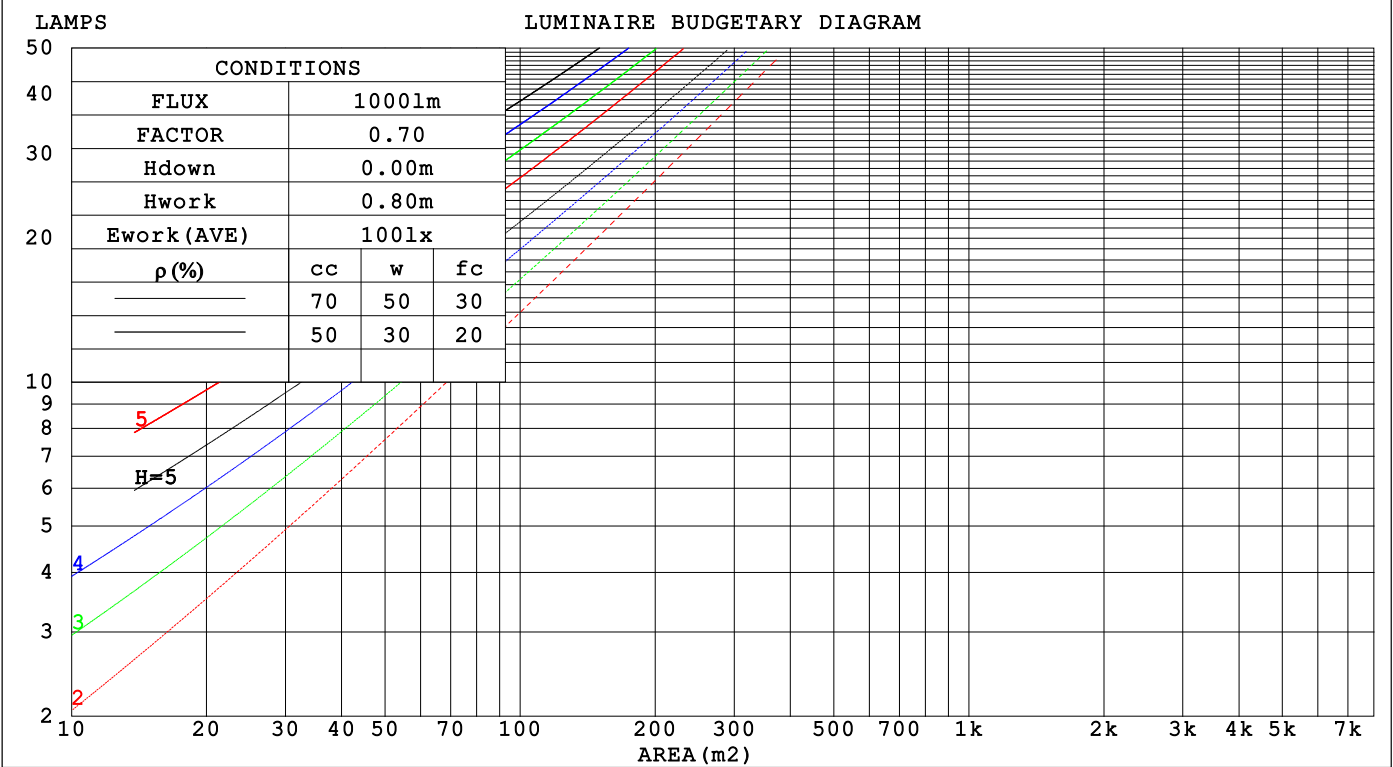
C Range: 0 - 360DEG  
C Interval: 30.0DEG  
Test Speed: HIGH  
Temperature:25.3℃  
Operators:  
Test Date:2025-03-15

γ Range: 0 - 180DEG  
γ Interval: 1.0DEG  
Test System:EVERFINE GO-2000B\_V1 SYSTEM V2.00.488  
Humidity:65.0%  
Test Distance:6.360m [K=1.0000]  
Remarks:

CU AND LUMINAIRE BUDGETARY ESTIMATE DIAGRAM

Test:U:24.00V I:0.2835A P:6.804W PF:1.000 Freq:0Hz		
Lamp Flux:333.143x1 lm		
NAME: SF10-24V-5050-84-SPI-RGBW(4000K)-W	TYPE:	WEIGHT:
SPEC.:	DIM.: Length=1m	SERIAL No.:
MFR.: OLYMPIA lighting	SUR.:	Shielding Angle:

pcc	80%			70%			50%			30%			10%			0
pw	50%	30%	10%	50%	30%	10%	50%	30%	10%	50%	30%	10%	50%	30%	10%	0
pfc	20%			20%			20%			20%			20%			0
RCR	RCR:Room Cavity Ratio															



C Range: 0 - 360DEG  
C Interval: 30.0DEG  
Test Speed: HIGH  
Temperature:25.3℃  
Operators:  
Test Date:2025-03-15

γ Range: 0 - 180DEG  
γ Interval: 1.0DEG  
Test System:EVERFINE GO-2000B\_V1 SYSTEM V2.00.488  
Humidity:65.0%  
Test Distance:6.360m [K=1.0000]  
Remarks:

## WEC AND CCEC

Test:U:24.00V I:0.2835A P:6.804W PF:1.000 Freq:0Hz Lamp Flux:333.143x1 lm		
NAME: SF10-24V-5050-84-SPI-RGBW(4000K)-W	TYPE:	WEIGHT:
SPEC.:	DIM.: Length=1m	SERIAL No.:
MFR.: OLympia lighting	SUR.:	Shielding Angle:

pcc	80%			70%			50%			30%			10%			0														
pw	50%	30%	10%	50%	30%	10%	50%	30%	10%	50%	30%	10%	50%	30%	10%	0														
pfc	20%			20%			20%			20%			20%			0														
RCR	RCR:Room Cavity Ratio															Wall Exitance Coefficients(WEC)														
0.0																														
1.0	.326	.185	.059	.317	.181	.058	.302	.173	.055	.288	.166	.053	.275	.159	.051															
2.0	.301	.165	.051	.294	.162	.050	.280	.156	.048	.267	.150	.047	.256	.145	.046															
3.0	.276	.147	.044	.269	.144	.043	.257	.139	.042	.246	.135	.041	.235	.130	.040															
4.0	.253	.131	.039	.247	.129	.038	.236	.125	.037	.226	.122	.037	.217	.118	.036															
5.0	.233	.119	.034	.228	.117	.034	.218	.114	.033	.209	.110	.033	.201	.107	.032															
6.0	.215	.108	.031	.211	.107	.031	.202	.104	.030	.194	.101	.030	.186	.098	.029															
7.0	.200	.099	.028	.196	.098	.028	.188	.095	.027	.181	.093	.027	.174	.090	.027															
8.0	.187	.091	.026	.183	.090	.025	.176	.088	.025	.169	.086	.025	.163	.084	.024															
9.0	.175	.084	.024	.171	.083	.023	.165	.082	.023	.159	.080	.023	.153	.078	.022															
10.0	.164	.079	.022	.161	.078	.022	.155	.076	.021	.150	.074	.021	.144	.073	.021															

pcc	80%			70%			50%			30%			10%			0
pw	50%	30%	10%	50%	30%	10%	50%	30%	10%	50%	30%	10%	50%	30%	10%	0
pfc	20%			20%			20%			20%			20%			0
RCR	RCR:Room Cavity Ratio						Ceiling Cavity Exitance Coefficients (CCEC)									
0.0	.218	.218	.218	.186	.186	.186	.127	.127	.127	.073	.073	.073	.023	.023	.023	
1.0	.209	.184	.161	.179	.158	.138	.122	.108	.096	.070	.063	.056	.023	.020	.018	
2.0	.201	.160	.125	.172	.137	.108	.118	.095	.075	.068	.055	.044	.022	.018	.014	
3.0	.194	.142	.101	.166	.123	.088	.114	.085	.062	.066	.050	.036	.021	.016	.012	
4.0	.186	.129	.086	.160	.112	.075	.110	.078	.053	.063	.046	.031	.020	.015	.010	
5.0	.178	.119	.075	.153	.103	.065	.106	.072	.046	.061	.042	.027	.020	.014	.009	
6.0	.171	.111	.067	.147	.096	.058	.102	.067	.041	.059	.039	.025	.019	.013	.008	
7.0	.164	.104	.061	.141	.090	.054	.098	.063	.038	.057	.037	.023	.018	.012	.007	
8.0	.158	.098	.057	.136	.085	.050	.094	.060	.035	.055	.035	.021	.018	.012	.007	
9.0	.152	.093	.054	.131	.081	.047	.091	.057	.033	.053	.034	.020	.017	.011	.007	
10.0	.146	.089	.051	.126	.077	.044	.087	.054	.032	.051	.032	.019	.017	.011	.006	

C Range: 0 - 360DEG  
C Interval: 30.0DEG  
Test Speed: HIGH  
Temperature:25.3℃  
Operators:  
Test Date:2025-03-15

γ Range: 0 - 180DEG  
γ Interval: 1.0DEG  
Test System:EVERFINE GO-2000B\_V1 SYSTEM V2.00.488  
Humidity:65.0%  
Test Distance:6.360m [K=1.0000]  
Remarks:

UGR(Unified Glare Rating) Table

Test:U:24.00V I:0.2835A P:6.804W PF:1.000 Freq:0Hz Lamp Flux:333.143x1 lm											
NAME: SF10-24V-5050-84-SPI-RGBW(4000K)-W					TYPE:			WEIGHT:			
SPEC.:					DIM.: Length=1m			SERIAL No.:			
MFR.: OLympia lighting					SUR.:			Shielding Angle:			
ceiling/cavity	0.7	0.7	0.5	0.5	0.3	0.7	0.7	0.5	0.5	0.3	
walls	0.5	0.3	0.5	0.3	0.3	0.5	0.3	0.5	0.3	0.3	
working plane	0.2	0.2	0.2	0.2	0.2	0.2	0.2	0.2	0.2	0.2	
Room dimensions		Viewed crosswise					Viewed endwise				
x = 2H y = 2H	2H	22.7	24.1	23.0	24.4	24.7	22.6	24.1	23.0	24.4	24.7
	3H	24.4	25.7	24.7	26.0	26.4	24.3	25.7	24.7	26.0	26.3
	4H	25.1	26.4	25.5	26.8	27.1	25.1	26.4	25.5	26.7	27.0
	6H	25.8	27.0	26.2	27.4	27.7	25.7	26.9	26.1	27.3	27.6
	8H	26.0	27.2	26.4	27.6	28.0	25.9	27.1	26.3	27.5	27.9
	12H	26.3	27.4	26.7	27.8	28.1	26.1	27.3	26.5	27.6	28.0
4H	2H	23.3	24.6	23.7	24.9	25.3	23.3	24.6	23.7	24.9	25.3
	3H	25.2	26.4	25.6	26.7	27.1	25.2	26.3	25.6	26.7	27.1
	4H	26.1	27.2	26.6	27.6	28.0	26.1	27.1	26.5	27.5	27.9
	6H	26.9	27.9	27.4	28.3	28.7	26.8	27.8	27.3	28.2	28.6
	8H	27.3	28.1	27.7	28.6	29.0	27.2	28.0	27.6	28.5	28.9
	12H	27.5	28.3	28.0	28.8	29.3	27.4	28.2	27.9	28.7	29.1
8H	4H	26.5	27.3	26.9	27.8	28.2	26.4	27.3	26.9	27.7	28.2
	6H	27.5	28.2	28.0	28.7	29.2	27.4	28.1	27.9	28.6	29.1
	8H	27.9	28.6	28.4	29.1	29.6	27.8	28.5	28.3	28.9	29.5
	12H	28.3	28.9	28.9	29.4	29.9	28.2	28.7	28.7	29.2	29.8
12H	4H	26.5	27.3	27.0	27.8	28.2	26.5	27.3	26.9	27.7	28.2
	6H	27.6	28.2	28.1	28.7	29.2	27.5	28.1	28.0	28.6	29.2
	8H	28.1	28.6	28.6	29.1	29.7	28.0	28.5	28.5	29.0	29.6
Variations with the observer position at spacings(CIE Pub.117):											
S = 1.0H		+ 0.1 / - 0.2					+ 0.1 / - 0.2				
1.5H		+ 0.2 / - 0.3					+ 0.2 / - 0.3				
2.0H		+ 0.1 / - 0.3					+ 0.1 / - 0.3				

CIE Pub.117, 333.1 lm Total Lamp Luminous Flux Correct (8log(F/F0) = -3.8)  
Area: 0.0135 m2

C Range: 0 - 360DEG  
C Interval: 30.0DEG  
Test Speed: HIGH  
Temperature:25.3℃  
Operators:  
Test Date:2025-03-15

γ Range: 0 - 180DEG  
γ Interval: 1.0DEG  
Test System:EVERFINE GO-2000B\_V1 SYSTEM V2.00.488  
Humidity:65.0%  
Test Distance:6.360m [K=1.0000]  
Remarks:

## UTILIZATION FACTORS TABLE

Test:U:24.00V I:0.2835A P:6.804W PF:1.000 Freq:0Hz Lamp Flux:333.143x1 lm		
NAME: SF10-24V-5050-84-SPI-RGBW(4000K)-W	TYPE:	WEIGHT:
SPEC.:	DIM.: Length=1m	SERIAL No.:
MFR.: OLympia lighting	SUR.:	Shielding Angle:

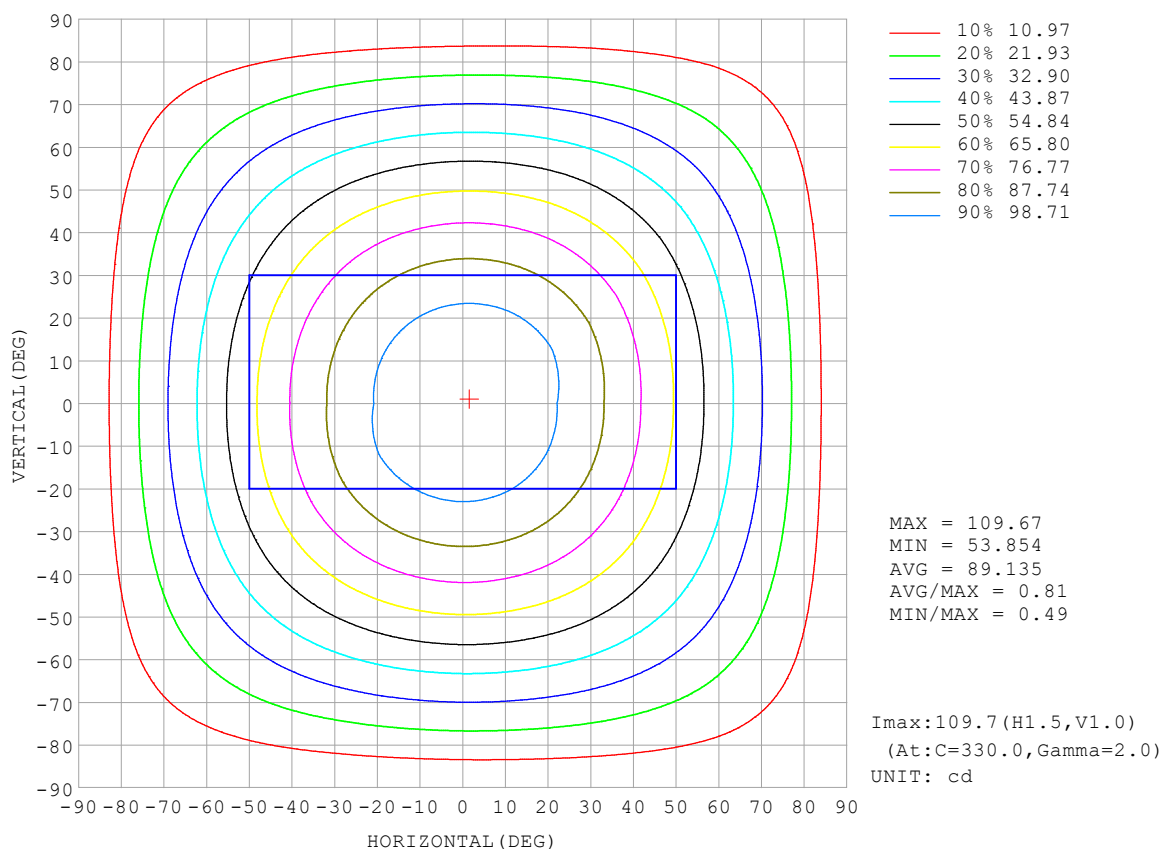
REFLECTANCE										
Ceiling	0.8	0.8	0.8	0.7	0.7	0.7	0.5	0.5	0.5	0
Walls	0.7	0.5	0.3	0.7	0.5	0.3	0.7	0.5	0.3	0
Working plane	0.2	0.2	0.2	0.2	0.2	0.2	0.2	0.2	0.2	0
ROOM INDEX	UTILIZATION FACTORS (PERCENT) $k(RI) \times RCR = 5$									
$k = 0.60$	56	44	37	55	44	37	53	43	37	30
0.80	66	54	46	64	53	46	62	52	45	38
1.00	74	62	55	72	62	54	70	63	54	46
1.25	81	70	63	79	69	62	76	67	61	53
1.50	86	76	68	84	74	68	80	72	66	58
2.00	93	84	77	91	82	76	87	80	74	65
2.50	97	89	82	94	87	81	90	84	79	70
3.00	100	93	87	98	91	86	93	88	83	74
4.00	104	98	93	102	96	92	97	92	89	78
5.00	107	102	97	104	100	96	99	95	92	82
ROOM INDEX	UF(total)									Direct
According to DIN EN 13032-2 2004			Suspended					SHRNOM = 1.25		

C Range: 0 - 360DEG  
 C Interval: 30.0DEG  
 Test Speed: HIGH  
 Temperature: 25.3°C  
 Operators:  
 Test Date: 2025-03-15

γ Range: 0 - 180DEG  
 γ Interval: 1.0DEG  
 Test System: EVERFINE GO-2000B\_V1 SYSTEM V2.00.488  
 Humidity: 65.0%  
 Test Distance: 6.360m [K=1.0000]  
 Remarks:

## ISOCANDELA DIAGRAM

Test:U:24.00V I:0.2835A P:6.804W PF:1.000 Freq:0Hz Lamp Flux:333.143x1 lm		
NAME: SF10-24V-5050-84-SPI-RGBW(4000K)-W	TYPE:	WEIGHT:
SPEC.:	DIM.: Length=1m	SERIAL No.:
MFR.: OLympia lighting	SUR.:	Shielding Angle:



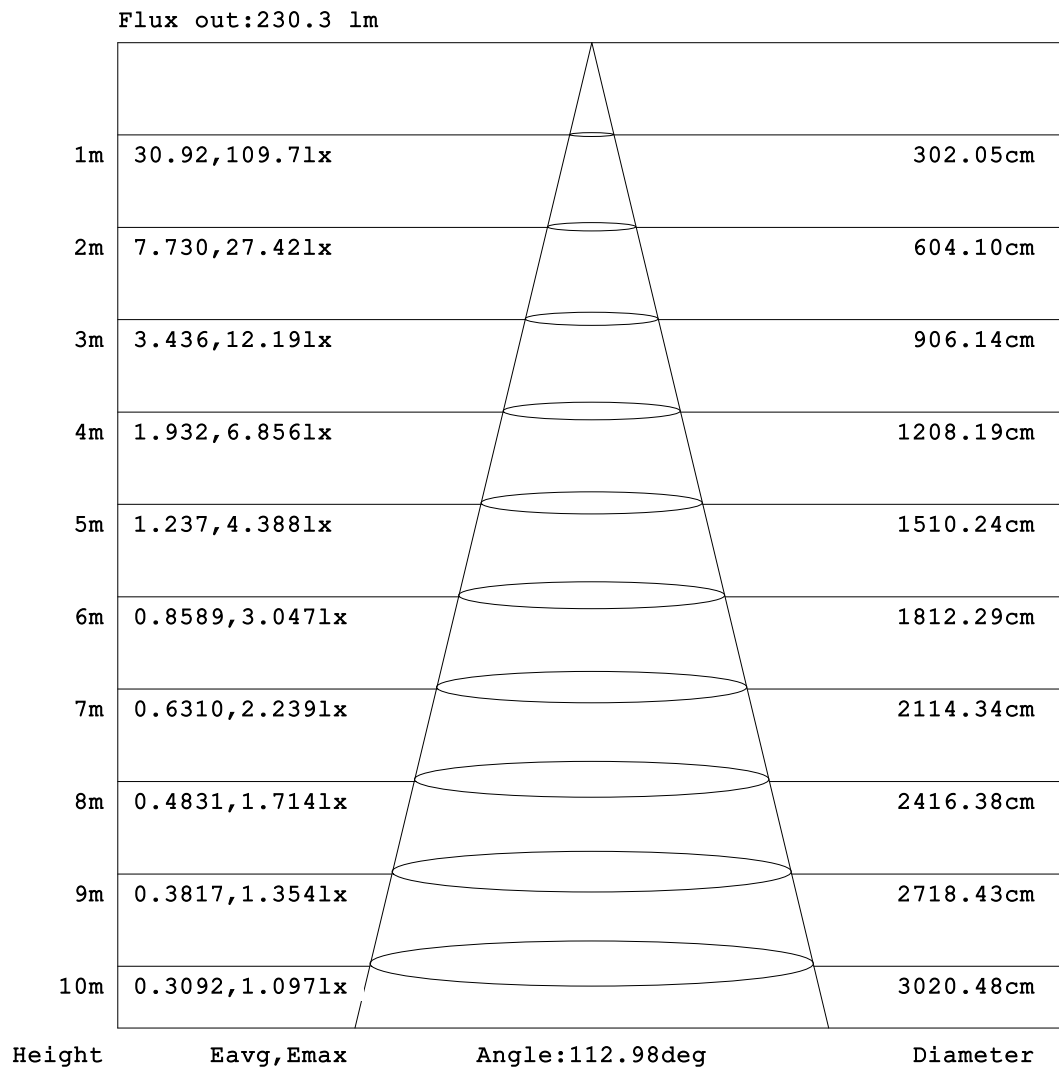
C Range: 0 - 360DEG  
C Interval: 30.0DEG  
Test Speed: HIGH  
Temperature:25.3℃  
Operators:  
Test Date:2025-03-15

γ Range: 0 - 180DEG  
γ Interval: 1.0DEG  
Test System:EVERFINE GO-2000B\_V1 SYSTEM V2.00.488  
Humidity:65.0%  
Test Distance:6.360m [K=1.0000]  
Remarks:



## AAI Figure

Test:U:24.00V I:0.2835A P:6.804W PF:1.000 Freq:0Hz Lamp Flux:333.143lx1 lm		
NAME: SF10-24V-5050-84-SPI-RGBW(4000K)-W	TYPE:	WEIGHT:
SPEC.:	DIM.: Length=1m	SERIAL No.:
MFR.: OLympia lighting	SUR.:	Shielding Angle:



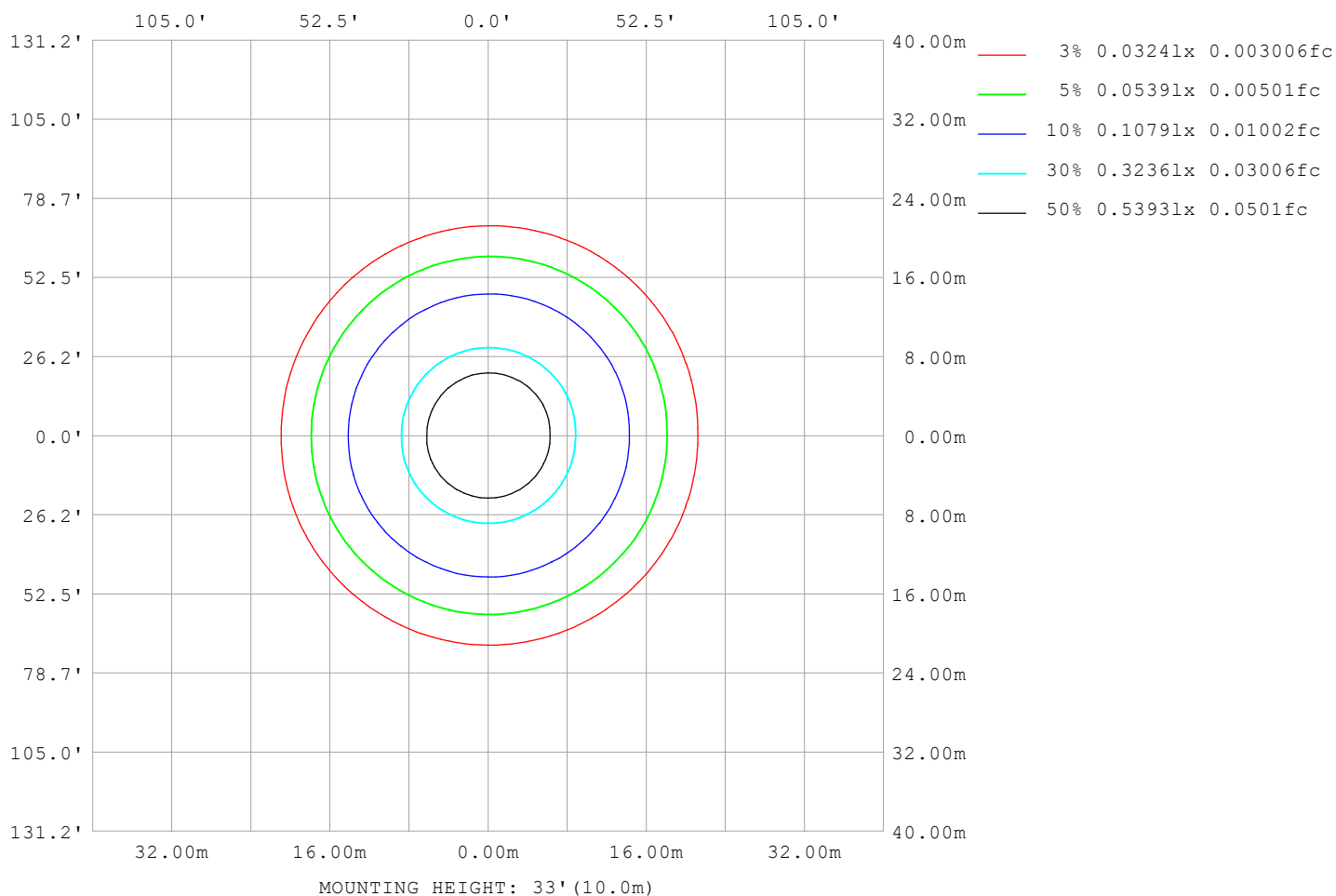
Note:The Curves indicate the illuminated area and the average illumination when the luminaire is at different distance.

C Range: 0 - 360DEG  
C Interval: 30.0DEG  
Test Speed: HIGH  
Temperature:25.3℃  
Operators:  
Test Date:2025-03-15

γ Range: 0 - 180DEG  
γ Interval: 1.0DEG  
Test System:EVERFINE GO-2000B\_V1 SYSTEM V2.00.488  
Humidity:65.0%  
Test Distance:6.360m [K=1.0000]  
Remarks:

## ISOLUX DIAGRAM

Test:U:24.00V I:0.2835A P:6.804W PF:1.000 Freq:0Hz Lamp Flux:333.143x1 lm		
NAME: SF10-24V-5050-84-SPI-RGBW(4000K)-W	TYPE:	WEIGHT:
SPEC.:	DIM.: Length=1m	SERIAL No.:
MFR.: OLympia lighting	SUR.:	Shielding Angle:



C Range: 0 - 360DEG  
C Interval: 30.0DEG  
Test Speed: HIGH  
Temperature: 25.3°C  
Operators:  
Test Date: 2025-03-15

γ Range: 0 - 180DEG  
γ Interval: 1.0DEG  
Test System: EVERFINE GO-2000B\_V1 SYSTEM V2.00.488  
Humidity: 65.0%  
Test Distance: 6.360m [K=1.0000]  
Remarks:

## LED Avg.L Report

Test:U:24.00V I:0.2835A P:6.804W PF:1.000 Freq:0Hz Lamp Flux:333.143x1 lm		
NAME: SF10-24V-5050-84-SPI-RGBW(4000K)-W	TYPE:	WEIGHT:
SPEC.:	DIM.: Length=1m	SERIAL No.:
MFR.: OLympia lighting	SUR.:	Shielding Angle:

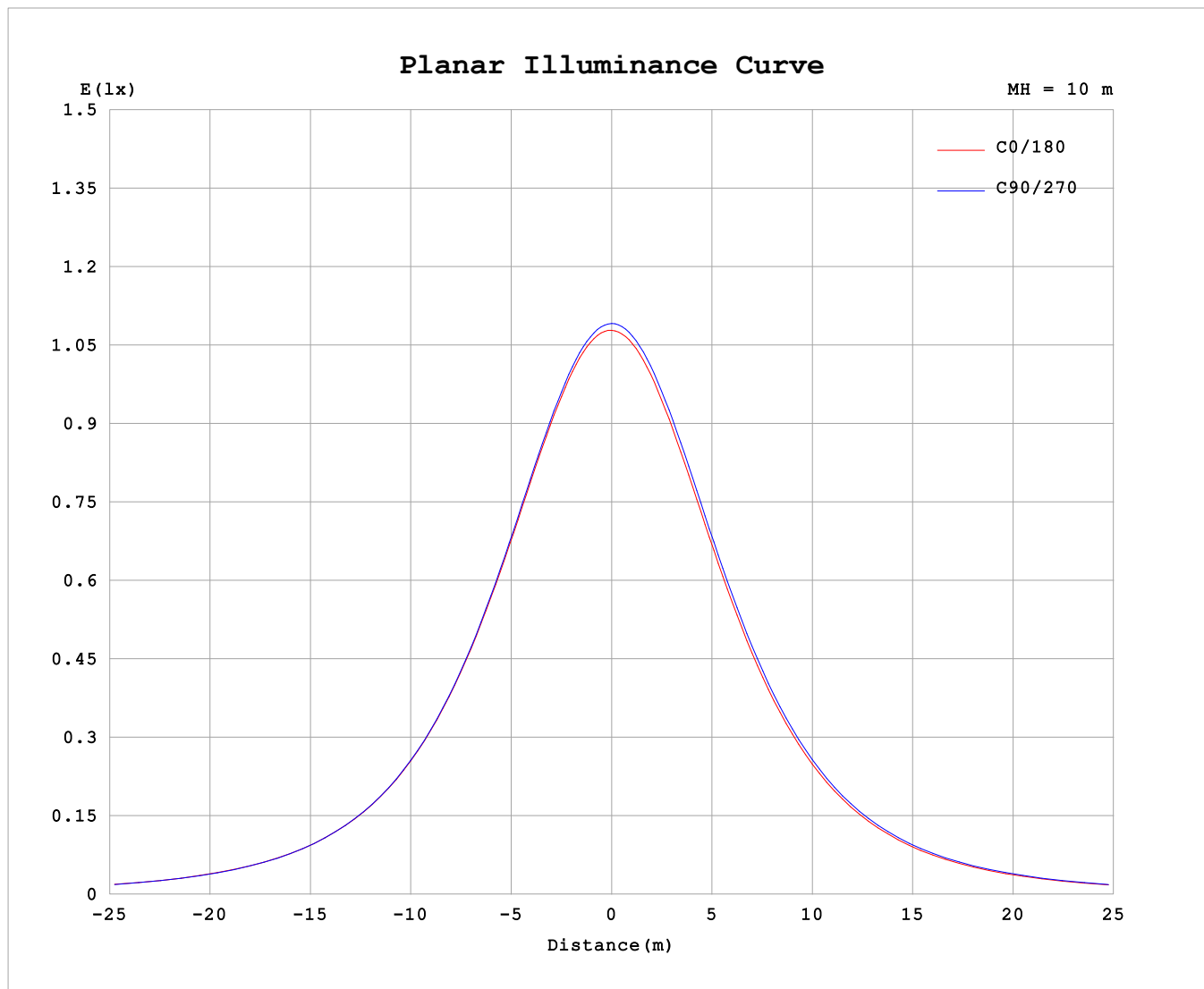
AvgL	cd/m2
L_0~180 (65) av	7140
L_0~180 (75) av	7017
L_0~180 (85) av	7461
L_90~270 (65) av	7207
L_90~270 (75) av	7095
L_90~270 (85) av	7311
L_45 (65) av	7184
L_45 (75) av	7067
L_45 (85) av	7350

Standard: GB/T 29293-2012

C Range: 0 - 360DEG  
C Interval: 30.0DEG  
Test Speed: HIGH  
Temperature:25.3℃  
Operators:  
Test Date:2025-03-15

γ Range: 0 - 180DEG  
γ Interval: 1.0DEG  
Test System:EVERFINE GO-2000B\_V1 SYSTEM V2.00.488  
Humidity:65.0%  
Test Distance:6.360m [K=1.0000]  
Remarks:

## Planar Illuminance Curve



C Range: 0 - 360DEG  
C Interval: 30.0DEG  
Test Speed: HIGH  
Temperature: 25.3 °C  
Operators:  
Test Date: 2025-03-15

$\gamma$  Range: 0 - 180DEG  
 $\gamma$  Interval: 1.0DEG  
Test System: EVERFINE GO-2000B\_V1 SYSTEM V2.00.488  
Humidity: 65.0%  
Test Distance: 6.360m [K=1.0000]  
Remarks:

## LUMINOUS DISTRIBUTION INTENSITY DATA

Test:U:24.00V I:0.2835A P:6.804W PF:1.000 Freq:0Hz Lamp Flux:333.143x1 lm																	
NAME: SF10-24V-5050-84-SPI-RGBW(4000K)-W									TYPE:			WEIGHT:					
SPEC.:									DIM.: Length=1m			SERIAL No.:					
MFR.: OLYMPIA lighting									SUR.:			Shielding Angle:					

Table--1

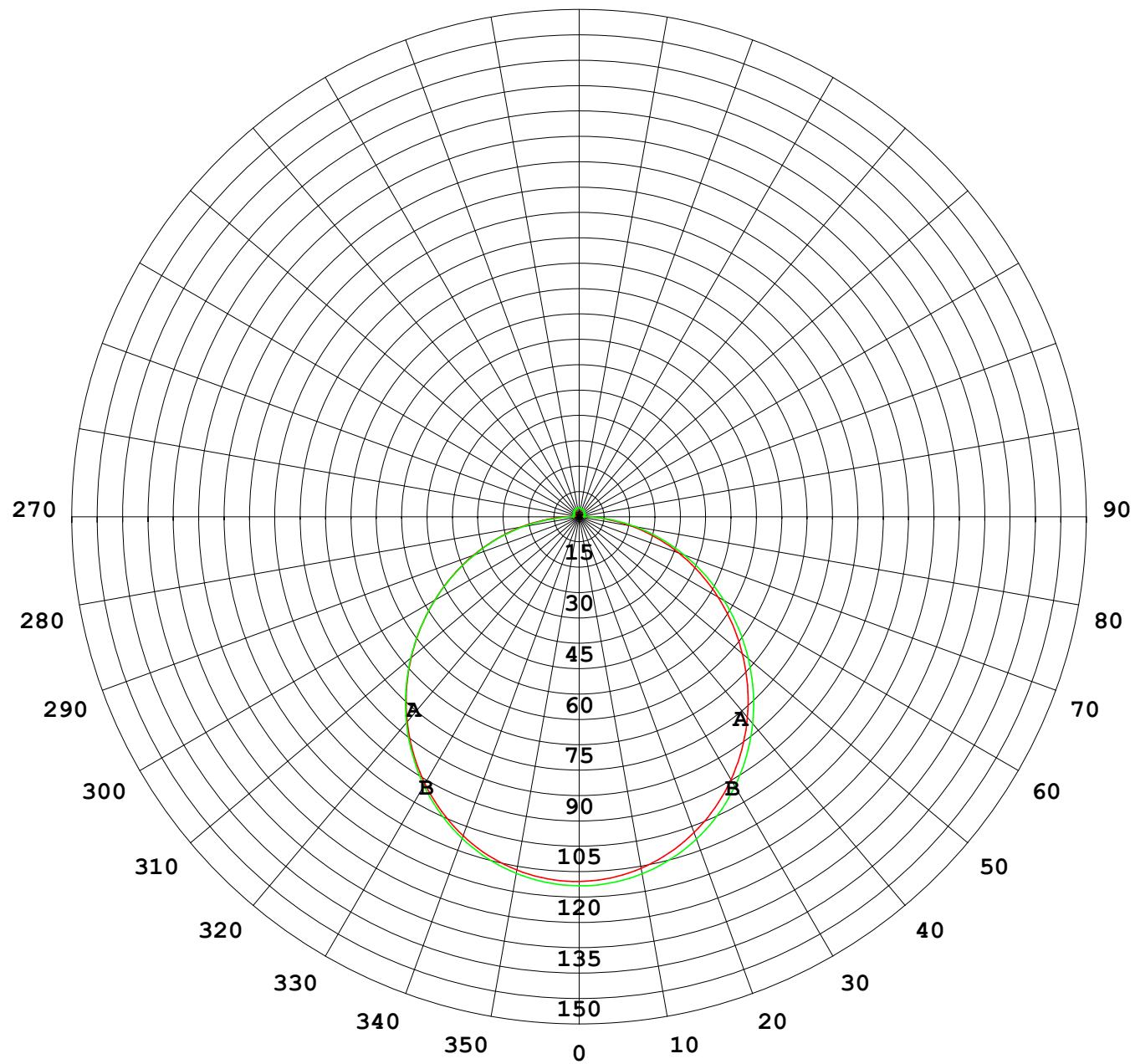
UNIT: cd

C (DEG) γ (DEG)	0	30	60	90	120	150	180	210	240	270	300	330						
0	109	109	109	109	109	109	109	109	109	109	109	109						
5	108	109	108	108	108	108	108	108	108	108	108	109						
10	107	107	107	107	107	107	107	107	107	107	107	107						
15	105	105	105	104	104	104	104	104	104	105	105	105						
20	101	101	101	101	101	100	100	101	101	101	102	102						
25	97.1	97.2	97.0	96.7	96.3	96.0	95.9	96.1	96.6	97.0	97.3	97.4						
30	92.1	92.1	92.0	91.6	91.1	90.8	90.7	90.9	91.5	91.9	92.3	92.3						
35	86.3	86.3	86.2	85.8	85.3	84.8	84.7	85.0	85.6	86.2	86.6	86.6						
40	79.9	79.9	79.8	79.3	78.7	78.3	78.2	78.5	79.1	79.7	80.2	80.2						
45	72.9	73.0	72.7	72.3	71.6	71.2	71.1	71.4	72.0	72.6	73.2	73.2						
50	65.5	65.6	65.3	64.9	64.2	63.7	63.6	63.9	64.5	65.2	65.8	65.8						
55	57.8	57.8	57.6	57.1	56.4	55.9	55.8	56.1	56.8	57.4	58.0	58.1						
60	49.8	49.9	49.6	49.1	48.4	47.9	47.9	48.1	48.7	49.4	50.0	50.2						
65	41.7	41.8	41.5	41.0	40.3	39.8	39.8	40.0	40.6	41.2	41.9	42.1						
70	33.6	33.6	33.3	32.8	32.1	31.6	31.7	31.8	32.4	33.0	33.7	33.9						
75	25.5	25.5	25.1	24.7	23.9	23.5	23.6	23.7	24.3	24.9	25.6	25.8						
80	17.4	17.4	17.0	16.6	15.8	15.5	15.5	15.7	16.2	16.8	17.5	17.7						
85	9.61	9.54	8.94	8.48	7.80	7.70	7.95	7.85	8.19	8.72	9.47	9.75						
90	3.95	3.66	2.64	1.75	2.32	2.86	3.06	2.81	2.21	1.52	2.77	3.69						
95	1.47	1.51	1.68	1.76	1.76	1.56	1.26	1.31	1.41	1.44	1.41	1.35						
100	1.44	1.53	1.68	1.77	1.80	1.63	1.33	1.37	1.49	1.53	1.48	1.34						
105	1.52	1.55	1.72	1.79	1.86	1.70	1.40	1.44	1.57	1.62	1.55	1.41						
110	1.62	1.57	1.77	1.83	1.92	1.78	1.49	1.52	1.66	1.69	1.63	1.49						
115	1.70	1.66	1.78	1.90	1.97	1.87	1.57	1.60	1.73	1.76	1.70	1.57						
120	1.79	1.74	1.80	1.99	2.02	1.95	1.65	1.68	1.81	1.82	1.76	1.66						
125	1.88	1.82	1.90	2.07	2.08	2.02	1.74	1.77	1.88	1.88	1.83	1.73						
130	1.97	1.91	2.05	2.14	2.14	2.10	1.83	1.86	1.96	1.96	1.91	1.81						
135	2.04	2.02	2.14	2.21	2.20	2.17	1.92	1.95	2.05	2.03	1.99	1.87						
140	2.13	2.11	2.22	2.28	2.27	2.25	2.02	2.04	2.13	2.10	2.07	1.96						
145	2.19	2.22	2.29	2.35	2.34	2.32	2.11	2.14	2.21	2.18	2.15	2.05						
150	2.28	2.31	2.36	2.43	2.41	2.39	2.21	2.22	2.30	2.28	2.23	2.14						
155	2.36	2.39	2.44	2.50	2.47	2.47	2.31	2.32	2.38	2.36	2.35	2.24						
160	2.45	2.46	2.51	2.57	2.54	2.54	2.40	2.40	2.46	2.44	2.43	2.33						
165	2.52	2.53	2.57	2.62	2.60	2.60	2.49	2.48	2.54	2.52	2.51	2.41						
170	2.56	2.61	2.62	2.65	2.63	2.64	2.54	2.56	2.59	2.58	2.58	2.53						
175	2.60	2.64	2.65	2.68	2.67	2.67	2.60	2.61	2.65	2.64	2.64	2.60						
180	2.63	2.64	2.68	2.68	2.68	2.67	2.62	2.66	2.67	2.69	2.68	2.66						

C Range: 0 - 360DEG  
C Interval: 30.0DEG  
Test Speed: HIGH  
Temperature:25.3℃  
Operators:  
Test Date:2025-03-15

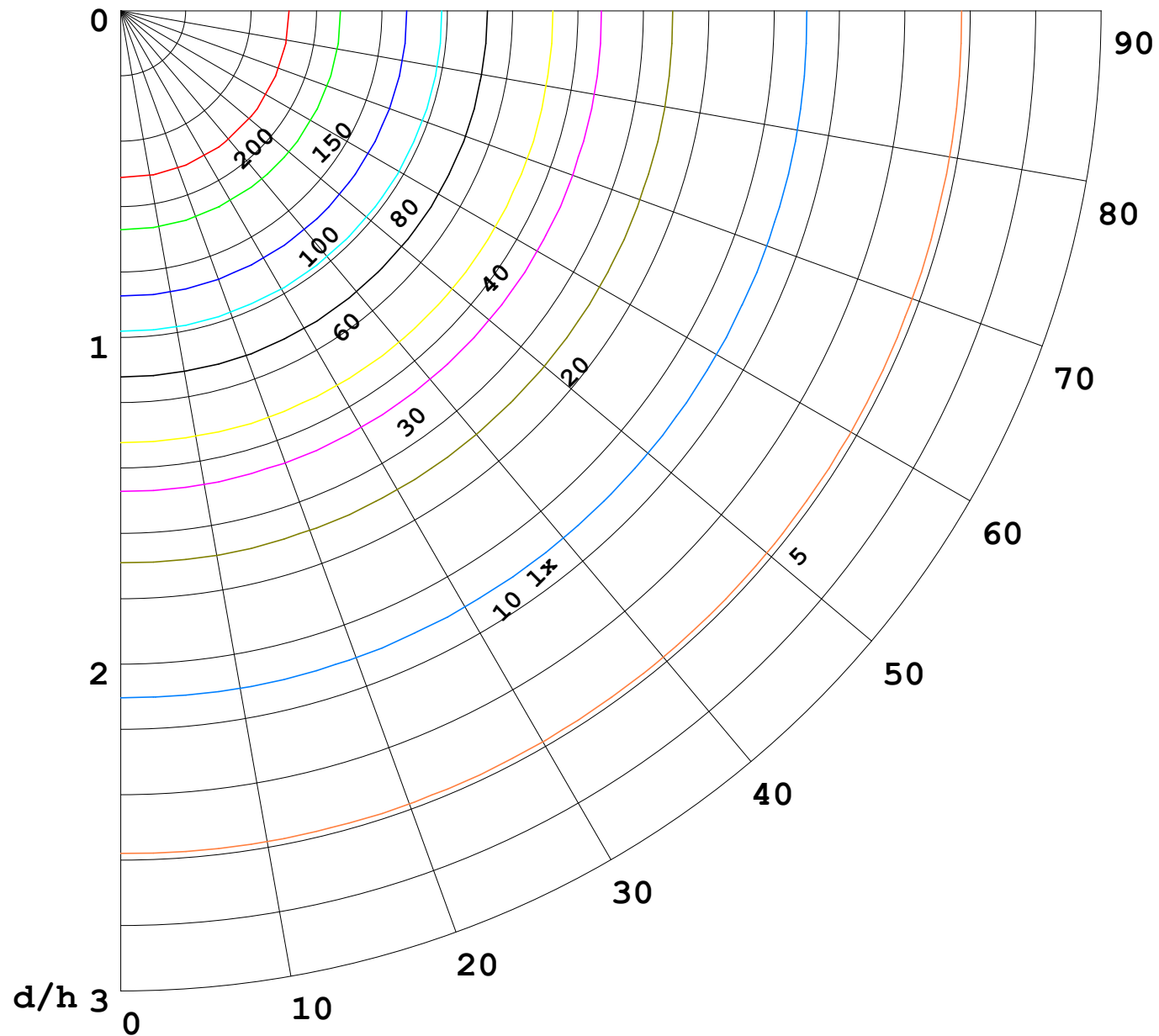
γ Range: 0 - 180DEG  
γ Interval: 1.0DEG  
Test System:EVERFINE GO-2000B\_V1 SYSTEM V2.00.488  
Humidity:65.0%  
Test Distance:6.360m [K=1.0000]  
Remarks:

I (cd)



1000 lm

$\kappa = 1$



F = 1000 lm  
 K = 0.7  
 Hcc = 0.8 m  
 Hfc = 0.0 m  
 Eave = 100 lx

	Pcc	Pw	Pfc
————	70	50	30
————	50	30	20

