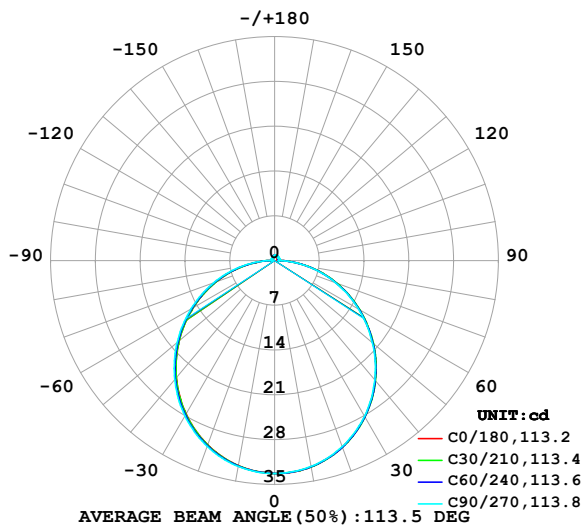


LUMINAIRE PHOTOMETRIC TEST REPORT

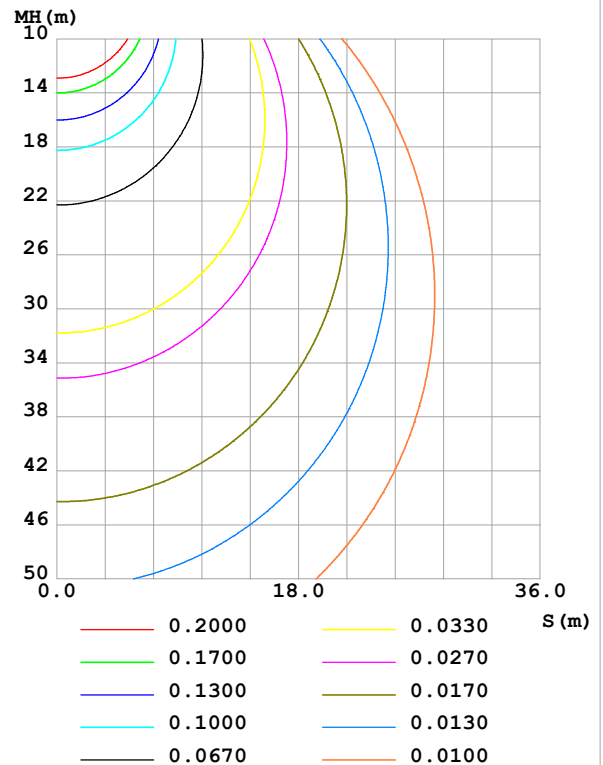
Test:U:24.00V I:0.3834A P:9.202W PF:1.000 Freq:0Hz Lamp Flux:102.232x1 lm		
NAME: SF10-24V-5050-84-SPI-RGBW(3000K)-R	TYPE:	WEIGHT:
SPEC.:	DIM.: Length=1m	SERIAL No.:
MFR.: OLympia lighting	SUR.:	Shielding Angle:

DATA OF LAMP		PHOTOMETRIC DATA Eff: 11.11 lm/W			
MODEL	2835	I _{max} (cd)	33.27	S/MH(C0/180)	1.24
NOMINAL POWER(W)		LOR(%)	100.0	S/MH(C90/270)	1.25
RATED VOLTAGE(V)	24	TOTAL FLUX(lm)	102.23	η UP,DN(C0-180)	2.0,48.2
NOMINAL FLUX(lm)	102.232	CIE CLASS	DIRECT	η UP,DN(C180-360)	1.7,48.0
LAMPS INSIDE	1	η up (%)	3.7	CIBSE SHR NOM	1.25
TEST VOLTAGE(V)		η down (%)	96.3	CIBSE SHR MAX	1.35

LUMINOUS INTENSITY DISTRIBUTION DIAGRAM



C0 PLANE ISOLUX DIAGRAM (UNIT:lx)



C Range: 0 - 360DEG
C Interval: 30.0DEG
Test Speed: HIGH
Temperature:25.3℃
Operators:
Test Date:2025-03-14

γ Range: 0 - 180DEG
γ Interval: 1.0DEG
Test System:EVERFINE GO-2000B_V1 SYSTEM V2.00.488
Humidity:65.0%
Test Distance:6.360m [K=1.0000]
Remarks:

ZONAL FLUX DIAGRAM

ZONAL FLUX DIAGRAM:

γ	C0	C45	C90	C135	C180	C225	C270	C315	γ	Φ zone	Φ total	%lum,lamp
10	32.75	32.76	32.68	32.59	32.54	32.58	32.69	32.76	0- 10	3.147	3.147	3.08,3.08
20	31.01	31.04	30.94	30.74	30.63	30.72	30.90	31.04	10- 20	9.006	12.15	11.9,11.9
30	28.20	28.24	28.11	27.84	27.70	27.81	28.05	28.23	20- 30	13.63	25.78	25.2,25.2
40	24.48	24.52	24.36	24.04	23.89	24.02	24.30	24.53	30- 40	16.42	42.20	41.3,41.3
50	20.10	20.13	19.96	19.61	19.47	19.59	19.89	20.15	40- 50	17.07	59.28	58,58
60	15.29	15.31	15.14	14.79	14.68	14.78	15.08	15.35	50- 60	15.64	74.91	73.3,73.3
70	10.32	10.31	10.15	9.806	9.741	9.831	10.13	10.38	60- 70	12.45	87.36	85.5,85.5
80	5.344	5.296	5.131	4.827	4.818	4.894	5.191	5.405	70- 80	8.012	95.37	93.3,93.3
90	1.270	1.030	0.6067	0.8250	0.9747	0.7906	0.5511	1.023	80- 90	3.029	98.40	96.3,96.3
100	0.4754	0.5597	0.6730	0.5474	0.4265	0.4256	0.5198	0.4319	90-100	0.6112	99.01	96.9,96.9
110	0.4956	0.5972	0.7163	0.5980	0.4697	0.4703	0.5660	0.4637	100-110	0.5514	99.57	97.4,97.4
120	0.5502	0.6348	0.7365	0.6412	0.5215	0.5179	0.5805	0.5026	110-120	0.5577	100.1	97.9,97.9
130	0.6107	0.6751	0.7423	0.6774	0.5792	0.5684	0.5805	0.5489	120-130	0.5388	100.7	98.5,98.5
140	0.6597	0.7127	0.7653	0.7178	0.6397	0.6319	0.5978	0.5965	130-140	0.4958	101.2	99,99
150	0.7087	0.7516	0.8000	0.7540	0.7002	0.6939	0.6642	0.6529	140-150	0.4318	101.6	99.4,99.4
160	0.7577	0.7877	0.8202	0.7886	0.7550	0.7545	0.7307	0.7222	150-160	0.3418	101.9	99.7,99.7
170	0.8038	0.8108	0.8260	0.8132	0.8126	0.8050	0.7884	0.7857	160-170	0.2221	102.2	99.9,99.9
180	0.8211	0.8252	0.8347	0.8247	0.8211	0.8237	0.8289	0.8218	170-180	0.0777	102.2	100,100
DEG	LUMINOUS INTENSITY:cd									UNIT:lm		

Conical surface Flux(90deg): 50.791 lm

%lum = 49.7%

%lamp = 49.7%

Conical surface Flux(130deg): 81.627 lm

%lum = 79.8%

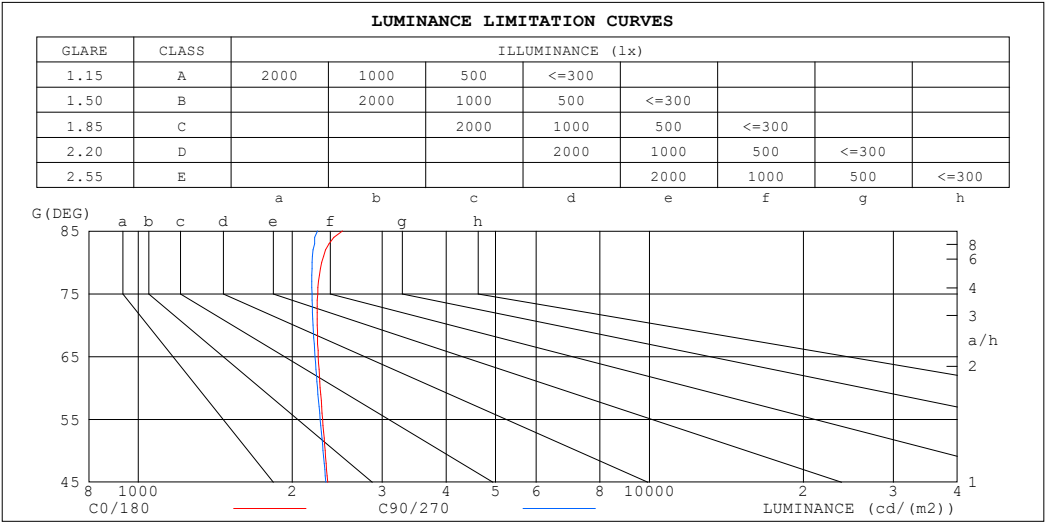
%lamp = 79.8%

C Range: 0 - 360DEG
 C Interval: 30.0DEG
 Test Speed: HIGH
 Temperature:25.3℃
 Operators:
 Test Date:2025-03-14

γ Range: 0 - 180DEG
 γ Interval: 1.0DEG
 Test System:EVERFINE GO-2000B_V1 SYSTEM V2.00.488
 Humidity:65.0%
 Test Distance:6.360m [K=1.0000]
 Remarks:

LUMINANCE LIMITATION CURVES

Test:U:24.00V I:0.3834A P:9.202W PF:1.000 Freq:0Hz Lamp Flux:102.232x1 lm		
NAME: SF10-24V-5050-84-SPI-RGBW(3000K)-R	TYPE:	WEIGHT:
SPEC.:	DIM.: Length=1m	SERIAL No.:
MFR.: OLympia lighting	SUR.:	Shielding Angle:



LUMINANCE cd/(m2)		
G (DEG)	C0/180	C90/270
85	2507	2240
80	2284	2187
75	2244	2188
70	2238	2197
65	2249	2217
60	2269	2242
55	2294	2269
50	2320	2298
45	2346	2327

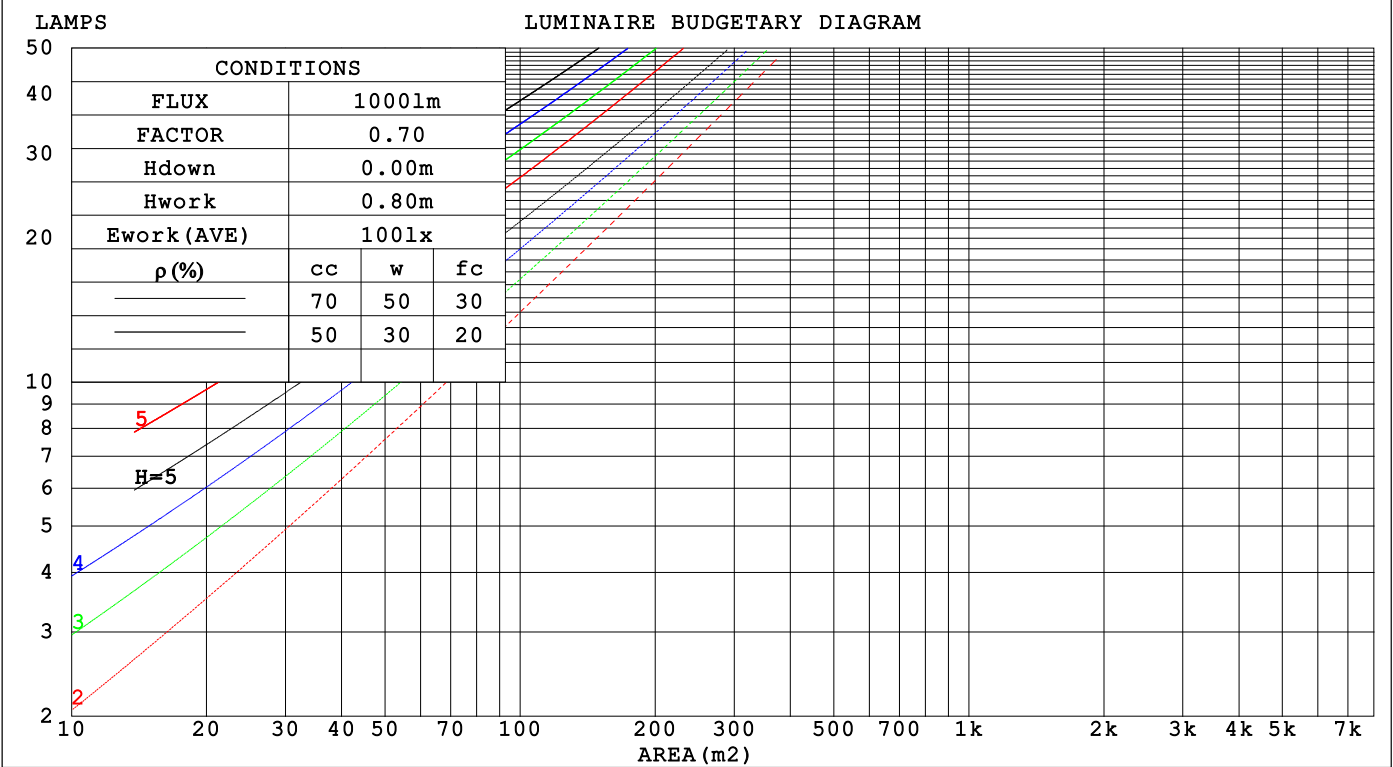
C Range: 0 - 360DEG
C Interval: 30.0DEG
Test Speed: HIGH
Temperature:25.3℃
Operators:
Test Date:2025-03-14

γ Range: 0 - 180DEG
γ Interval: 1.0DEG
Test System:EVERFINE GO-2000B_V1 SYSTEM V2.00.488
Humidity:65.0%
Test Distance:6.360m [K=1.0000]
Remarks:

CU AND LUMINAIRE BUDGETARY ESTIMATE DIAGRAM

Test:U:24.00V I:0.3834A P:9.202W PF:1.000 Freq:0Hz		
Lamp Flux:102.232x1 lm		
NAME: SF10-24V-5050-84-SPI-RGBW(3000K)-R	TYPE:	WEIGHT:
SPEC.:	DIM.: Length=1m	SERIAL No.:
MFR.: OLYMPIA lighting	SUR.:	Shielding Angle:

pcc	80%			70%			50%			30%			10%			0
pw	50%	30%	10%	50%	30%	10%	50%	30%	10%	50%	30%	10%	50%	30%	10%	0
pfc	20%			20%			20%			20%			20%			0
RCR	RCR:Room Cavity Ratio															



C Range: 0 - 360DEG
C Interval: 30.0DEG
Test Speed: HIGH
Temperature:25.3℃
Operators:
Test Date:2025-03-14

γ Range: 0 - 180DEG
γ Interval: 1.0DEG
Test System:EVERFINE GO-2000B_V1 SYSTEM V2.00.488
Humidity:65.0%
Test Distance:6.360m [K=1.0000]
Remarks:

WEC AND CCEC

Test:U:24.00V I:0.3834A P:9.202W PF:1.000 Freq:0Hz Lamp Flux:102.232x1 lm		
NAME: SF10-24V-5050-84-SPI-RGBW(3000K)-R	TYPE:	WEIGHT:
SPEC.:	DIM.: Length=1m	SERIAL No.:
MFR.: OLympia lighting	SUR.:	Shielding Angle:

pcc	80%			70%			50%			30%			10%			0														
pw	50%	30%	10%	50%	30%	10%	50%	30%	10%	50%	30%	10%	50%	30%	10%	0														
pfc	20%			20%			20%			20%			20%			0														
RCR	RCR:Room Cavity Ratio															Wall Exitance Coefficients(WEC)														
0.0																														
1.0	.326	.185	.059	.318	.181	.058	.302	.173	.055	.288	.166	.053	.275	.159	.051															
2.0	.301	.165	.051	.294	.162	.050	.280	.156	.048	.267	.150	.047	.256	.145	.046															
3.0	.276	.147	.044	.269	.144	.043	.257	.139	.042	.246	.135	.041	.235	.130	.040															
4.0	.253	.132	.039	.247	.129	.038	.236	.125	.037	.226	.122	.037	.217	.118	.036															
5.0	.233	.119	.034	.228	.117	.034	.218	.114	.033	.209	.110	.033	.200	.107	.032															
6.0	.216	.108	.031	.211	.107	.031	.202	.104	.030	.194	.101	.030	.186	.098	.029															
7.0	.200	.099	.028	.196	.098	.028	.188	.095	.027	.181	.093	.027	.174	.090	.027															
8.0	.187	.091	.026	.183	.090	.025	.176	.088	.025	.169	.086	.025	.163	.084	.024															
9.0	.175	.084	.024	.171	.083	.023	.165	.081	.023	.159	.080	.023	.153	.078	.022															
10.0	.164	.079	.022	.161	.078	.022	.155	.076	.021	.150	.074	.021	.144	.073	.021															

pcc	80%			70%			50%			30%			10%			0
pw	50%	30%	10%	50%	30%	10%	50%	30%	10%	50%	30%	10%	50%	30%	10%	0
pfc	20%			20%			20%			20%			20%			0
RCR	RCR:Room Cavity Ratio						Ceiling Cavity Exitance Coefficients (CCEC)									
0.0	.219	.219	.219	.187	.187	.187	.128	.128	.128	.073	.073	.073	.023	.023	.023	
1.0	.210	.185	.162	.180	.159	.139	.123	.109	.096	.071	.063	.056	.023	.020	.018	
2.0	.202	.161	.126	.173	.138	.109	.119	.096	.076	.069	.056	.044	.022	.018	.014	
3.0	.195	.143	.103	.167	.124	.089	.115	.086	.062	.066	.050	.037	.021	.016	.012	
4.0	.187	.130	.087	.161	.113	.076	.110	.078	.053	.064	.046	.031	.021	.015	.010	
5.0	.180	.120	.076	.154	.104	.066	.106	.073	.047	.062	.043	.028	.020	.014	.009	
6.0	.172	.112	.068	.148	.097	.059	.102	.068	.042	.059	.040	.025	.019	.013	.008	
7.0	.165	.105	.063	.142	.091	.054	.098	.064	.039	.057	.038	.023	.018	.012	.008	
8.0	.159	.099	.058	.137	.086	.051	.095	.060	.036	.055	.036	.021	.018	.012	.007	
9.0	.153	.094	.055	.132	.082	.048	.091	.058	.034	.053	.034	.020	.017	.011	.007	
10.0	.147	.090	.052	.127	.078	.045	.088	.055	.032	.051	.033	.019	.017	.011	.006	

C Range: 0 - 360DEG
C Interval: 30.0DEG
Test Speed: HIGH
Temperature:25.3℃
Operators:
Test Date:2025-03-14

γ Range: 0 - 180DEG
γ Interval: 1.0DEG
Test System:EVERFINE GO-2000B_V1 SYSTEM V2.00.488
Humidity:65.0%
Test Distance:6.360m [K=1.0000]
Remarks:

UGR(Unified Glare Rating) Table

Test:U:24.00V I:0.3834A P:9.202W PF:1.000 Freq:0Hz Lamp Flux:102.232x1 lm										
NAME: SF10-24V-5050-84-SPI-RGBW(3000K)-R					TYPE:			WEIGHT:		
SPEC.:					DIM.: Length=1m			SERIAL No.:		
MFR.: OLympia lighting					SUR.:			Shielding Angle:		
ceiling/cavity	0.7	0.7	0.5	0.5	0.3	0.7	0.7	0.5	0.5	0.3
walls	0.5	0.3	0.5	0.3	0.3	0.5	0.3	0.5	0.3	0.3
working plane	0.2	0.2	0.2	0.2	0.2	0.2	0.2	0.2	0.2	0.2
Room dimensions	Viewed crosswise					Viewed endwise				
x = 2H y = 2H	22.7	24.2	23.0	24.5	24.8	22.7	24.2	23.0	24.4	24.7
3H	24.4	25.8	24.8	26.1	26.4	24.4	25.7	24.7	26.0	26.4
4H	25.2	26.5	25.6	26.8	27.2	25.1	26.4	25.5	26.7	27.1
6H	25.8	27.1	26.2	27.4	27.8	25.7	27.0	26.1	27.3	27.7
8H	26.1	27.3	26.5	27.7	28.0	26.0	27.2	26.4	27.5	27.9
12H	26.3	27.5	26.7	27.8	28.2	26.2	27.3	26.6	27.7	28.0
4H 2H	23.4	24.7	23.7	25.0	25.3	23.3	24.6	23.7	24.9	25.3
3H	25.3	26.4	25.7	26.8	27.2	25.2	26.4	25.6	26.7	27.1
4H	26.2	27.2	26.6	27.6	28.0	26.1	27.2	26.5	27.5	28.0
6H	27.0	27.9	27.4	28.3	28.8	26.9	27.8	27.3	28.2	28.7
8H	27.3	28.2	27.8	28.6	29.1	27.2	28.1	27.7	28.5	29.0
12H	27.6	28.4	28.1	28.9	29.4	27.4	28.2	27.9	28.7	29.2
8H 4H	26.5	27.4	27.0	27.8	28.3	26.5	27.3	26.9	27.8	28.2
6H	27.5	28.3	28.0	28.7	29.2	27.4	28.1	27.9	28.6	29.1
8H	28.0	28.6	28.5	29.1	29.6	27.8	28.5	28.4	29.0	29.5
12H	28.4	28.9	28.9	29.5	30.0	28.2	28.8	28.7	29.3	29.8
12H 4H	26.6	27.4	27.0	27.8	28.3	26.5	27.3	27.0	27.7	28.2
6H	27.6	28.3	28.1	28.8	29.3	27.5	28.2	28.0	28.7	29.2
8H	28.1	28.7	28.7	29.2	29.8	28.0	28.6	28.5	29.1	29.6
Variations with the observer position at spacings(CIE Pub.117):										
S = 1.0H	+ 0.1 / - 0.2					+ 0.1 / - 0.2				
1.5H	+ 0.2 / - 0.3					+ 0.2 / - 0.3				
2.0H	+ 0.1 / - 0.3					+ 0.1 / - 0.3				

CIE Pub.117, 102.2 lm Total Lamp Luminous Flux Correct (8log(F/F0) = -7.9)
Area: 0.0135 m2

C Range: 0 - 360DEG
C Interval: 30.0DEG
Test Speed: HIGH
Temperature:25.3℃
Operators:
Test Date:2025-03-14

γ Range: 0 - 180DEG
γ Interval: 1.0DEG
Test System:EVERFINE GO-2000B_V1 SYSTEM V2.00.488
Humidity:65.0%
Test Distance:6.360m [K=1.0000]
Remarks:

UTILIZATION FACTORS TABLE

Test:U:24.00V I:0.3834A P:9.202W PF:1.000 Freq:0Hz Lamp Flux:102.232x1 lm		
NAME: SF10-24V-5050-84-SPI-RGBW(3000K)-R	TYPE:	WEIGHT:
SPEC.:	DIM.: Length=1m	SERIAL No.:
MFR.: OLympia lighting	SUR.:	Shielding Angle:

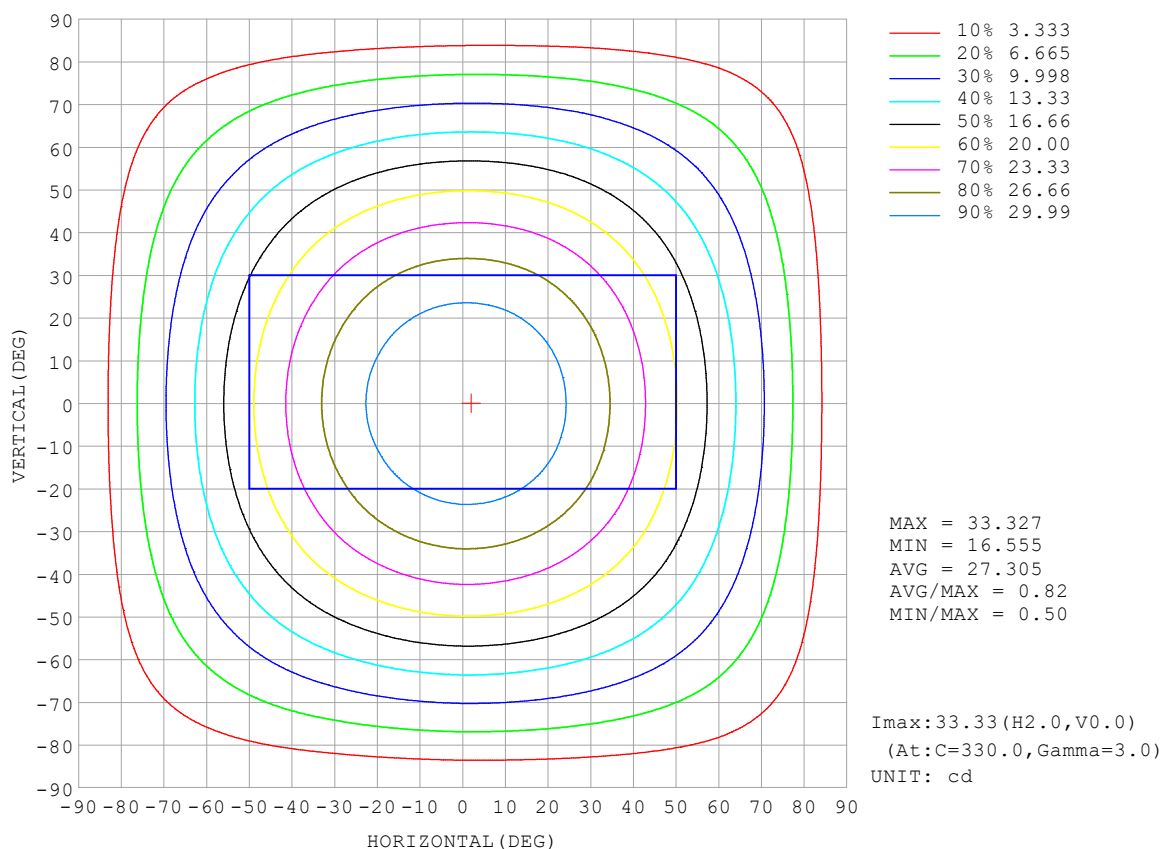
REFLECTANCE										
Ceiling	0.8	0.8	0.8	0.7	0.7	0.7	0.5	0.5	0.5	0
Walls	0.7	0.5	0.3	0.7	0.5	0.3	0.7	0.5	0.3	0
Working plane	0.2	0.2	0.2	0.2	0.2	0.2	0.2	0.2	0.2	0
ROOM INDEX	UTILIZATION FACTORS (PERCENT) $k(RI) \times RCR = 5$									
$k = 0.60$	56	44	37	55	44	37	53	43	36	30
0.80	65	54	46	64	53	46	62	52	45	38
1.00	74	62	55	72	61	54	70	63	54	46
1.25	81	70	62	79	69	62	76	67	61	53
1.50	86	75	68	84	74	67	80	72	66	58
2.00	93	84	77	91	82	76	87	80	74	65
2.50	97	89	82	94	87	81	90	84	79	69
3.00	100	93	87	98	91	86	93	88	83	73
4.00	104	98	93	102	96	92	97	92	88	78
5.00	107	102	97	104	99	95	99	95	92	81
ROOM INDEX	UF(total)									Direct
According to DIN EN 13032-2 2004			Suspended					SHRNOM = 1.25		

C Range: 0 - 360DEG
 C Interval: 30.0DEG
 Test Speed: HIGH
 Temperature: 25.3°C
 Operators:
 Test Date: 2025-03-14

γ Range: 0 - 180DEG
 γ Interval: 1.0DEG
 Test System: EVERFINE GO-2000B_V1 SYSTEM V2.00.488
 Humidity: 65.0%
 Test Distance: 6.360m [K=1.0000]
 Remarks:

ISOCANDELA DIAGRAM

Test:U:24.00V I:0.3834A P:9.202W PF:1.000 Freq:0Hz Lamp Flux:102.232x1 lm		
NAME: SF10-24V-5050-84-SPI-RGBW(3000K)-R	TYPE:	WEIGHT:
SPEC.:	DIM.: Length=1m	SERIAL No.:
MFR.: OLympia lighting	SUR.:	Shielding Angle:

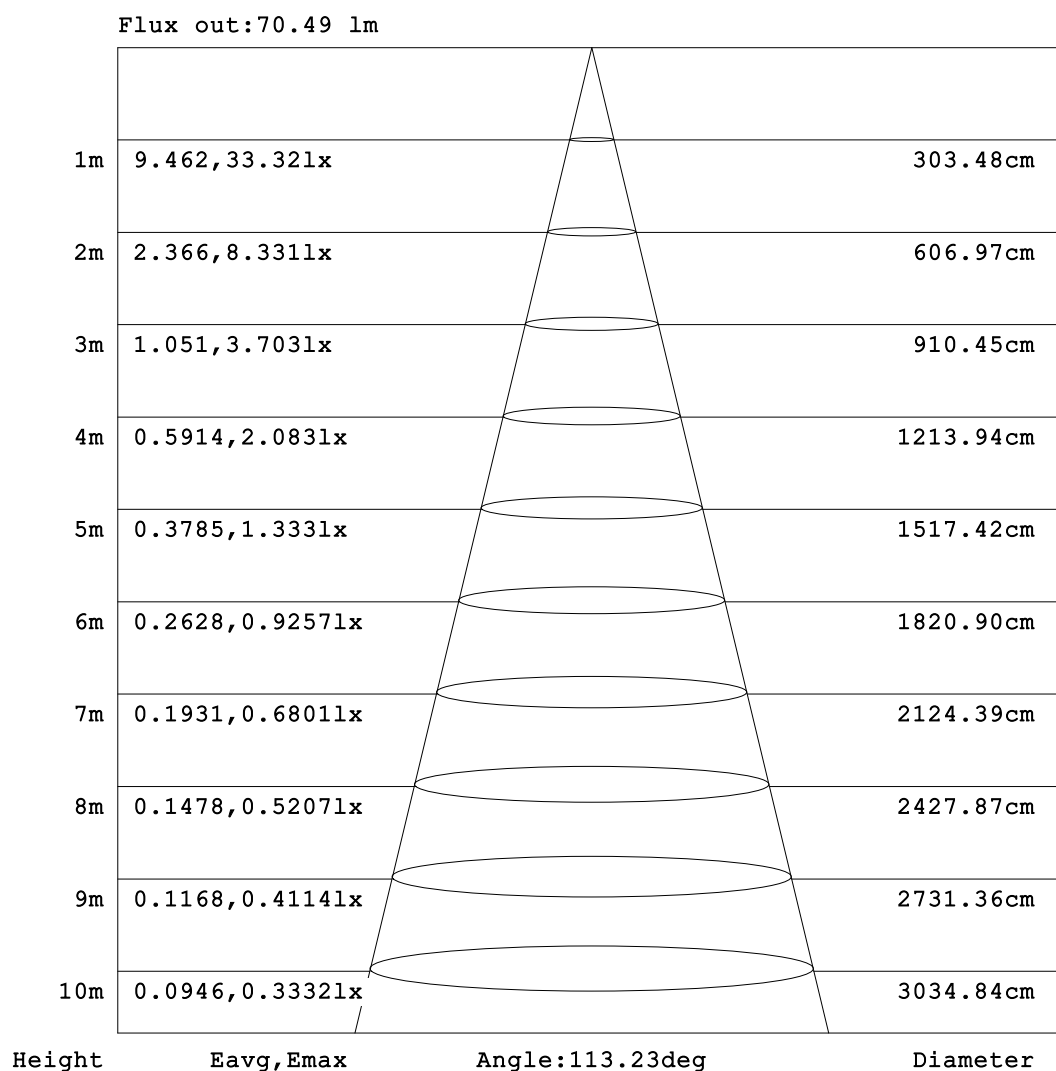


C Range: 0 - 360DEG
C Interval: 30.0DEG
Test Speed: HIGH
Temperature: 25.3°C
Operators:
Test Date: 2025-03-14

γ Range: 0 - 180DEG
γ Interval: 1.0DEG
Test System: EVERFINE GO-2000B_V1 SYSTEM V2.00.488
Humidity: 65.0%
Test Distance: 6.360m [K=1.0000]
Remarks:

AAI Figure

Test:U:24.00V I:0.3834A P:9.202W PF:1.000 Freq:0Hz Lamp Flux:102.232x1 lm		
NAME: SF10-24V-5050-84-SPI-RGBW(3000K)-R	TYPE:	WEIGHT:
SPEC.:	DIM.: Length=1m	SERIAL No.:
MFR.: OLympia lighting	SUR.:	Shielding Angle:



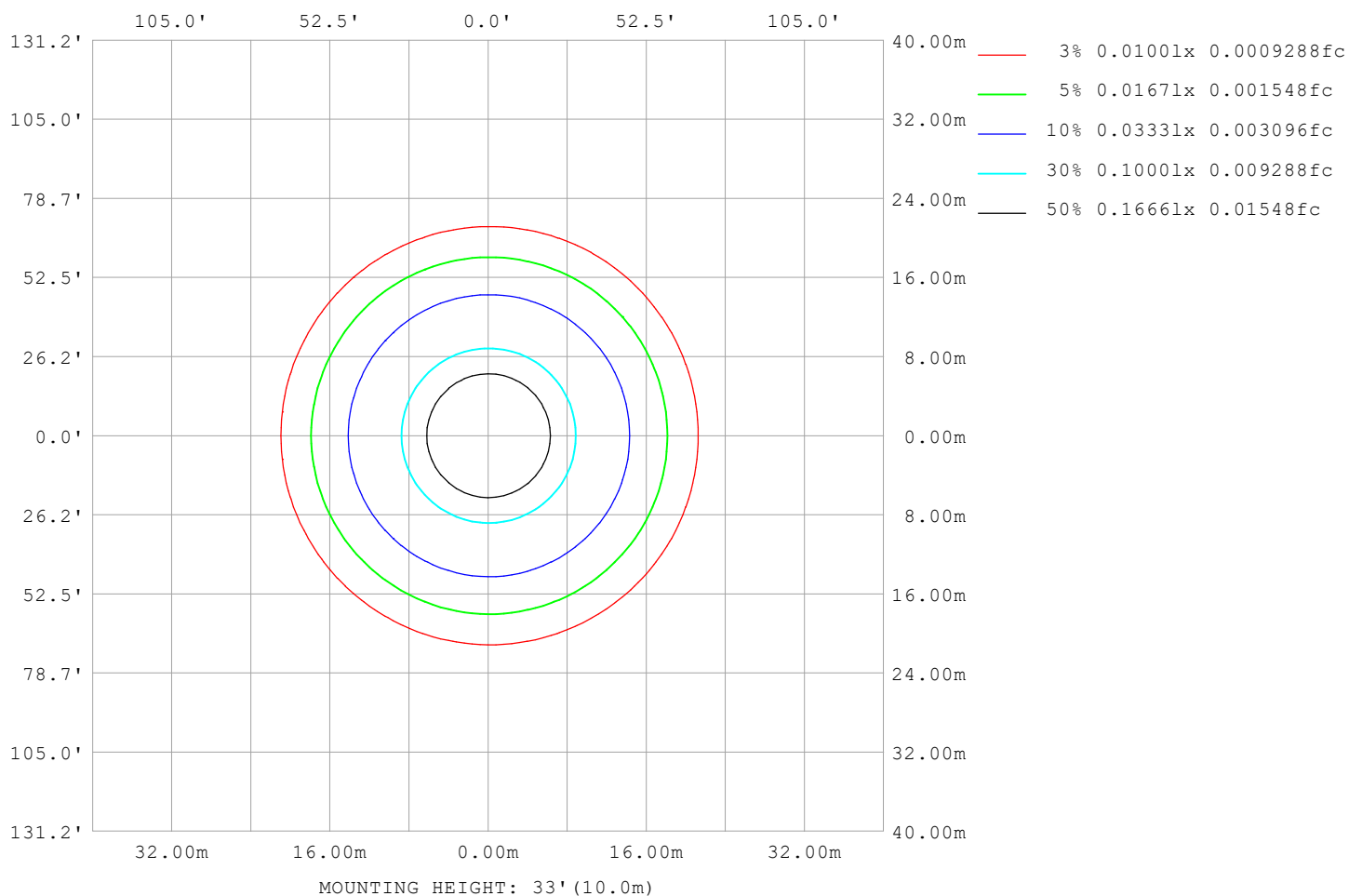
Note:The Curves indicate the illuminated area and the average illumination when the luminaire is at different distance.

C Range: 0 - 360DEG
C Interval: 30.0DEG
Test Speed: HIGH
Temperature:25.3℃
Operators:
Test Date:2025-03-14

γ Range: 0 - 180DEG
γ Interval: 1.0DEG
Test System:EVERFINE GO-2000B_V1 SYSTEM V2.00.488
Humidity:65.0%
Test Distance:6.360m [K=1.0000]
Remarks:

ISOLUX DIAGRAM

Test:U:24.00V I:0.3834A P:9.202W PF:1.000 Freq:0Hz Lamp Flux:102.232x1 lm		
NAME: SF10-24V-5050-84-SPI-RGBW(3000K)-R	TYPE:	WEIGHT:
SPEC.:	DIM.: Length=1m	SERIAL No.:
MFR.: OLympia lighting	SUR.:	Shielding Angle:



C Range: 0 - 360DEG
C Interval: 30.0DEG
Test Speed: HIGH
Temperature: 25.3°C
Operators:
Test Date: 2025-03-14

γ Range: 0 - 180DEG
γ Interval: 1.0DEG
Test System: EVERFINE GO-2000B_V1 SYSTEM V2.00.488
Humidity: 65.0%
Test Distance: 6.360m [K=1.0000]
Remarks:

LED Avg.L Report

Test:U:24.00V I:0.3834A P:9.202W PF:1.000 Freq:0Hz Lamp Flux:102.232x1 lm		
NAME: SF10-24V-5050-84-SPI-RGBW(3000K)-R	TYPE:	WEIGHT:
SPEC.:	DIM.: Length=1m	SERIAL No.:
MFR.: OLympia lighting	SUR.:	Shielding Angle:

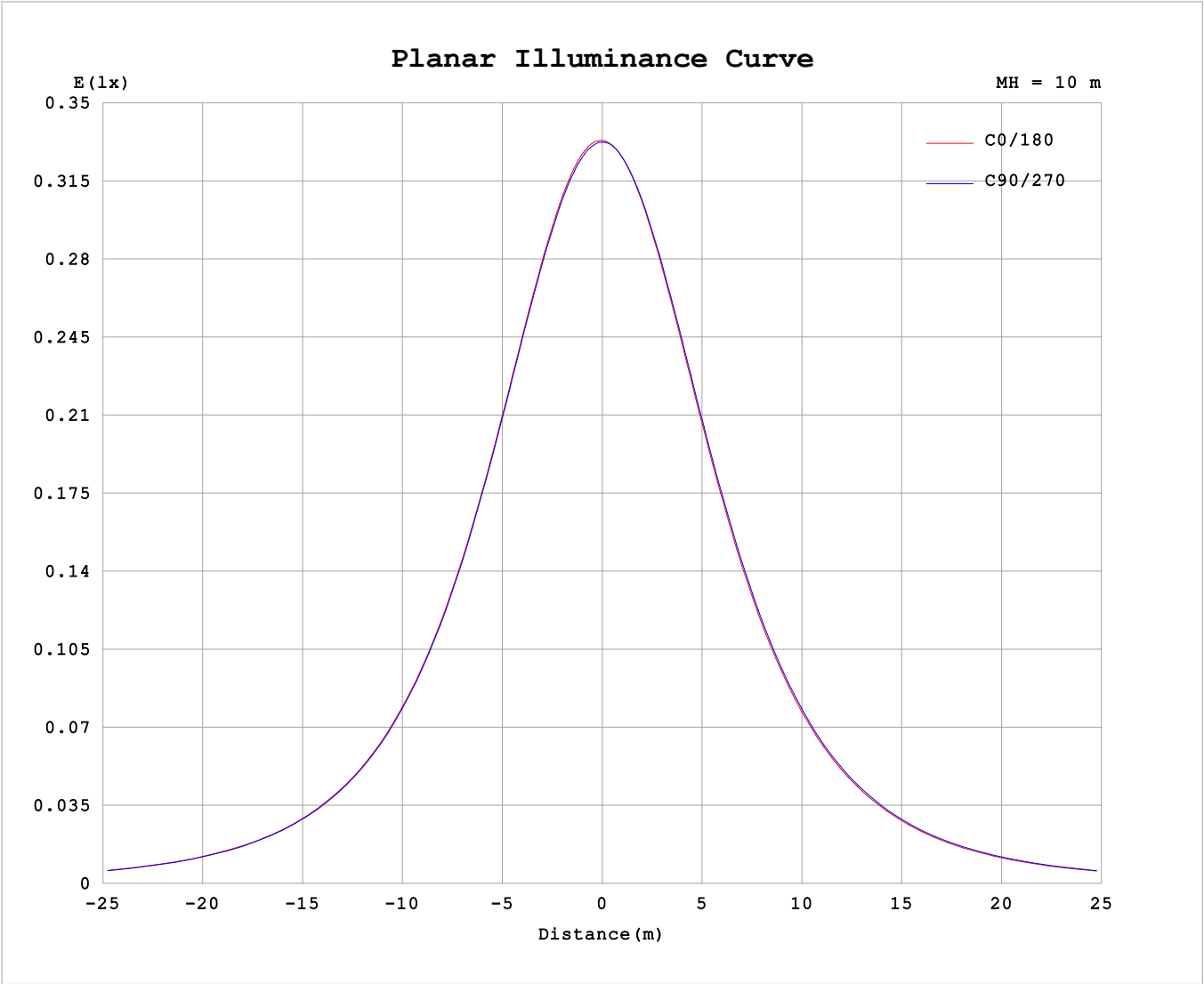
AvgL	cd/m2
L_0~180 (65) av	2193
L_0~180 (75) av	2161
L_0~180 (85) av	2312
L_90~270 (65) av	2214
L_90~270 (75) av	2189
L_90~270 (85) av	2280
L_45 (65) av	2204
L_45 (75) av	2172
L_45 (85) av	2263

Standard: GB/T 29293-2012

C Range: 0 - 360DEG
C Interval: 30.0DEG
Test Speed: HIGH
Temperature:25.3℃
Operators:
Test Date:2025-03-14

γ Range: 0 - 180DEG
γ Interval: 1.0DEG
Test System:EVERFINE GO-2000B_V1 SYSTEM V2.00.488
Humidity:65.0%
Test Distance:6.360m [K=1.0000]
Remarks:

Planar Illuminance Curve



C Range: 0 - 360DEG	γ Range: 0 - 180DEG
C Interval: 30.0DEG	γ Interval: 1.0DEG
Test Speed: HIGH	Test System:EVERFINE GO-2000B_V1 SYSTEM V2.00.488
Temperature:25.3℃	Humidity:65.0%
Operators:	Test Distance:6.360m [K=1.0000]
Test Date:2025-03-14	Remarks:

LUMINOUS DISTRIBUTION INTENSITY DATA

Test:U:24.00V I:0.3834A P:9.202W PF:1.000 Freq:0Hz Lamp Flux:102.232x1 lm											
NAME: SF10-24V-5050-84-SPI-RGBW(3000K)-R						TYPE:			WEIGHT:		
SPEC.:						DIM.: Length=1m			SERIAL No.:		
MFR.: Olym pia lighting						SUR.:			Shielding Angle:		

Table--1

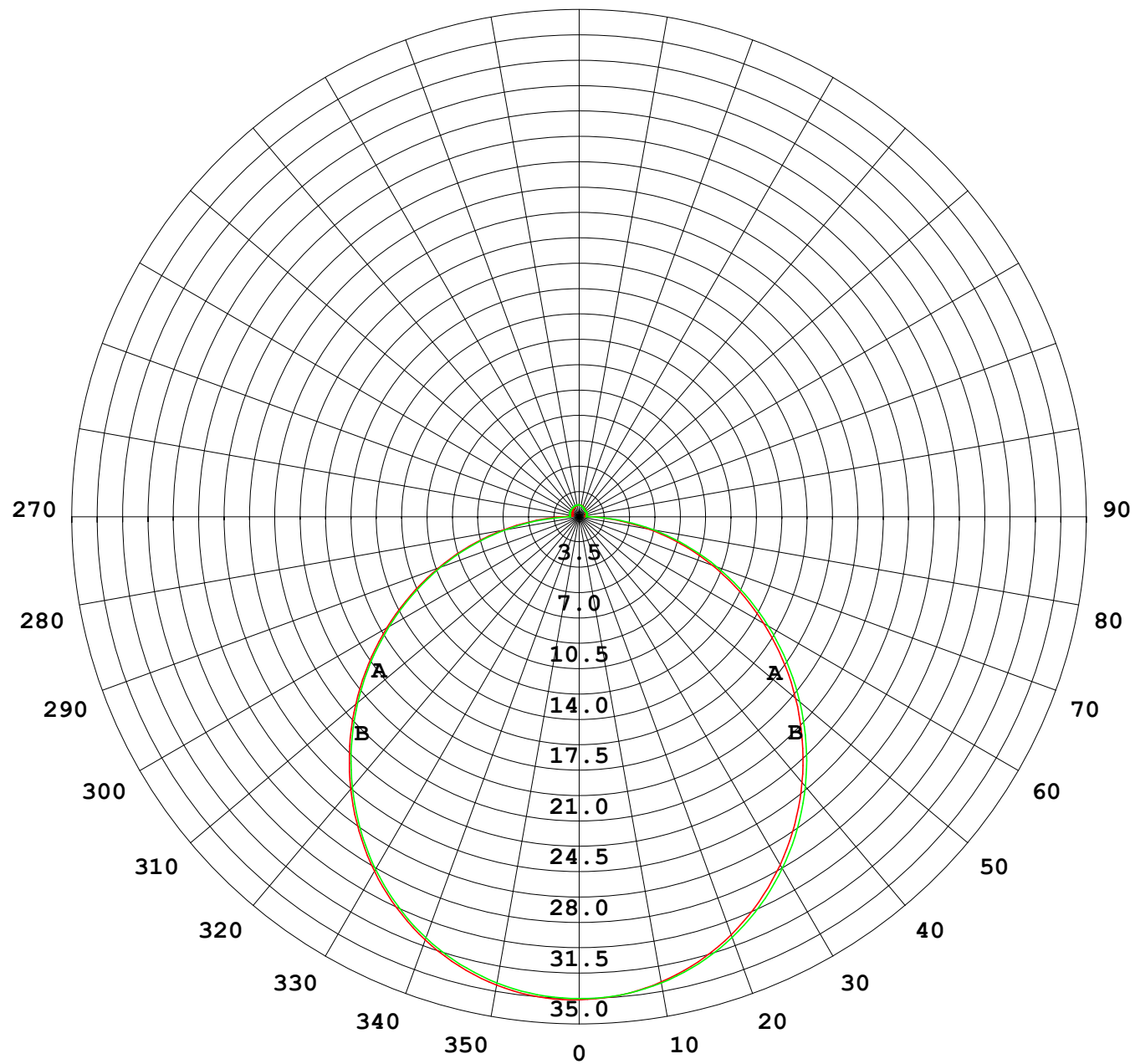
UNIT: cd

C (DEG) γ (DEG)	0	30	60	90	120	150	180	210	240	270	300	330							
0	33.3	33.3	33.3	33.3	33.3	33.3	33.3	33.3	33.3	33.3	33.3	33.3							
5	33.2	33.2	33.2	33.1	33.1	33.1	33.1	33.1	33.1	33.1	33.1	33.2							
10	32.8	32.8	32.7	32.7	32.6	32.5	32.5	32.6	32.6	32.7	32.7	32.8							
15	32.0	32.1	32.0	32.0	31.9	31.8	31.7	31.8	31.8	31.9	32.0	32.1							
20	31.0	31.1	31.0	30.9	30.8	30.7	30.6	30.7	30.8	30.9	31.0	31.1							
25	29.7	29.8	29.7	29.6	29.5	29.3	29.3	29.3	29.5	29.6	29.7	29.8							
30	28.2	28.3	28.2	28.1	27.9	27.8	27.7	27.7	27.9	28.1	28.2	28.3							
35	26.4	26.5	26.5	26.3	26.1	26.0	25.9	25.9	26.1	26.3	26.5	26.5							
40	24.5	24.6	24.5	24.4	24.1	24.0	23.9	23.9	24.1	24.3	24.5	24.5							
45	22.4	22.4	22.3	22.2	22.0	21.8	21.7	21.8	22.0	22.2	22.4	22.4							
50	20.1	20.2	20.1	20.0	19.7	19.5	19.5	19.5	19.7	19.9	20.1	20.2							
55	17.7	17.8	17.7	17.6	17.3	17.1	17.1	17.1	17.3	17.5	17.8	17.8							
60	15.3	15.4	15.3	15.1	14.9	14.7	14.7	14.7	14.9	15.1	15.3	15.4							
65	12.8	12.9	12.8	12.7	12.4	12.2	12.2	12.2	12.4	12.6	12.8	12.9							
70	10.3	10.4	10.3	10.2	9.87	9.74	9.74	9.74	9.93	10.1	10.4	10.4							
75	7.83	7.87	7.74	7.65	7.37	7.26	7.27	7.26	7.45	7.65	7.86	7.91							
80	5.34	5.37	5.22	5.13	4.87	4.79	4.82	4.81	4.98	5.19	5.38	5.43							
85	2.94	2.93	2.74	2.64	2.40	2.42	2.50	2.42	2.52	2.73	2.91	2.99							
90	1.27	1.17	0.89	0.61	0.74	0.91	0.97	0.89	0.69	0.55	0.87	1.18							
95	0.50	0.52	0.59	0.65	0.56	0.50	0.41	0.41	0.43	0.49	0.44	0.44							
100	0.48	0.53	0.59	0.67	0.57	0.52	0.43	0.41	0.44	0.52	0.45	0.42							
105	0.48	0.55	0.60	0.70	0.60	0.55	0.45	0.42	0.48	0.54	0.47	0.42							
110	0.50	0.57	0.63	0.72	0.62	0.57	0.47	0.45	0.49	0.57	0.49	0.44							
115	0.52	0.59	0.65	0.72	0.65	0.60	0.49	0.47	0.51	0.58	0.50	0.46							
120	0.55	0.61	0.66	0.74	0.66	0.62	0.52	0.50	0.54	0.58	0.51	0.49							
125	0.58	0.64	0.68	0.74	0.68	0.64	0.54	0.53	0.56	0.58	0.53	0.51							
130	0.61	0.66	0.69	0.74	0.69	0.66	0.58	0.56	0.58	0.58	0.55	0.54							
135	0.63	0.68	0.70	0.75	0.70	0.68	0.61	0.59	0.61	0.58	0.58	0.55							
140	0.66	0.71	0.72	0.77	0.73	0.71	0.64	0.62	0.64	0.60	0.61	0.58							
145	0.68	0.72	0.74	0.78	0.74	0.73	0.67	0.65	0.67	0.63	0.63	0.61							
150	0.71	0.75	0.76	0.80	0.76	0.75	0.70	0.68	0.70	0.66	0.67	0.64							
155	0.73	0.77	0.78	0.81	0.77	0.77	0.73	0.72	0.74	0.70	0.70	0.67							
160	0.76	0.79	0.79	0.82	0.78	0.79	0.75	0.74	0.77	0.73	0.74	0.70							
165	0.78	0.80	0.80	0.82	0.79	0.81	0.78	0.77	0.80	0.76	0.77	0.73							
170	0.80	0.82	0.80	0.83	0.80	0.82	0.81	0.80	0.81	0.79	0.80	0.77							
175	0.82	0.82	0.81	0.83	0.82	0.82	0.82	0.81	0.83	0.81	0.82	0.79							
180	0.82	0.82	0.83	0.83	0.83	0.82	0.82	0.82	0.83	0.83	0.83	0.81							

C Range: 0 - 360DEG
C Interval: 30.0DEG
Test Speed: HIGH
Temperature:25.3℃
Operators:
Test Date:2025-03-14

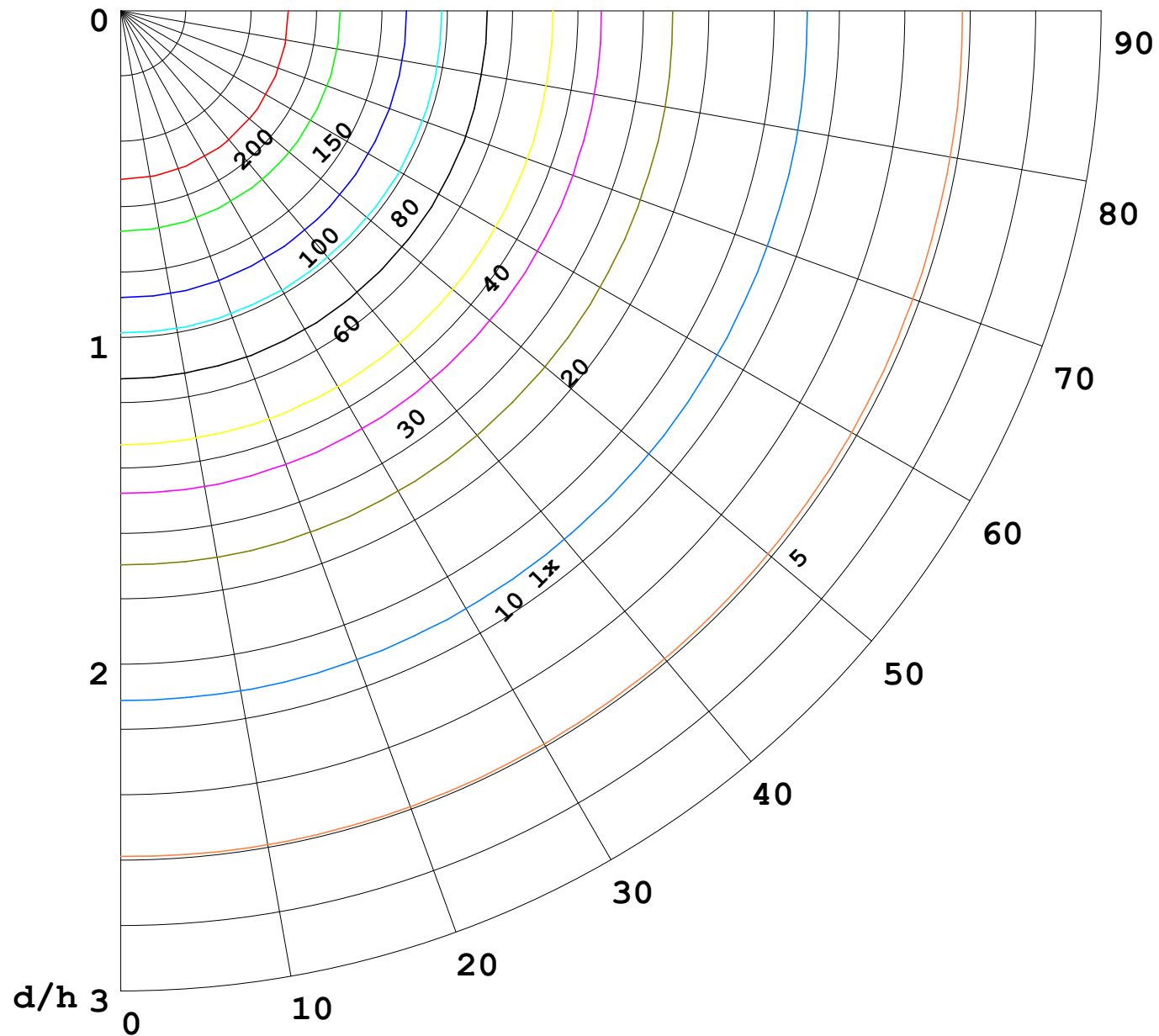
γ Range: 0 - 180DEG
γ Interval: 1.0DEG
Test System:EVERFINE GO-2000B_V1 SYSTEM V2.00.488
Humidity:65.0%
Test Distance:6.360m [K=1.0000]
Remarks:

I (cd)



1000 lm

$\kappa = 1$



F = 1000 lm
 K = 0.7
 Hcc = 0.8 m
 Hfc = 0.0 m
 Eave = 100 lx

	Pcc	Pw	Pfc
—————	70	50	30
—————	50	30	20

