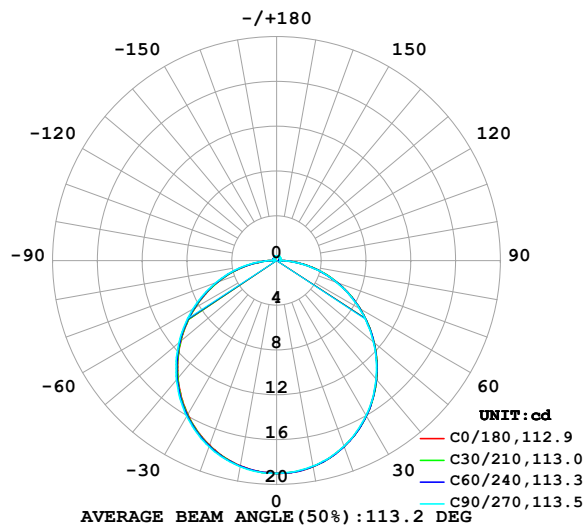


LUMINAIRE PHOTOMETRIC TEST REPORT

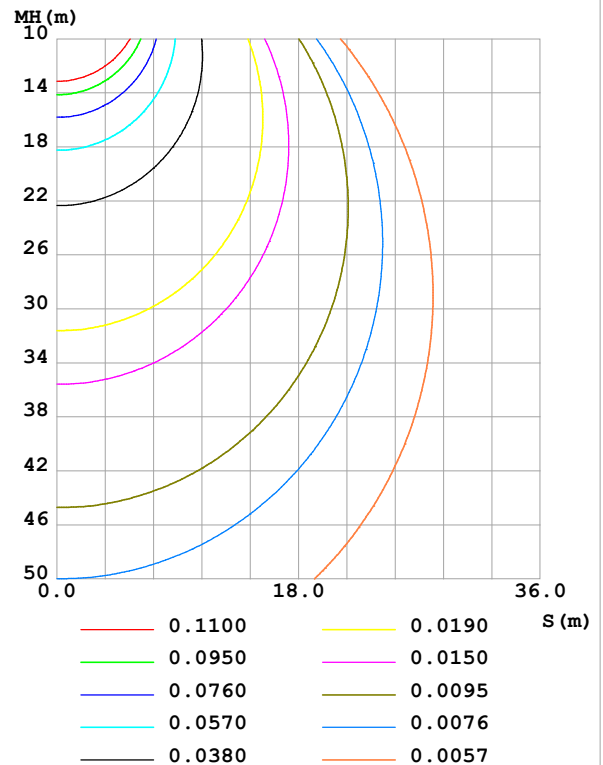
Test:U:24.00V I:0.5089A P:12.21W PF:1.000 Freq:0Hz Lamp Flux:58.0425x1 lm		
NAME: SF10-24V-5050-84-SPI-RGBW(2700K)-B	TYPE:	WEIGHT:
SPEC.:	DIM.: Length=1m	SERIAL No.:
MFR.: OLympia lighting	SUR.:	Shielding Angle:

DATA OF LAMP		PHOTOMETRIC DATA				Eff: 4.75 lm/W
MODEL	2835	I _{max} (cd)	19.01	S/MH(C0/180)	1.24	
NOMINAL POWER(W)		LOR(%)	100.0	S/MH(C90/270)	1.26	
RATED VOLTAGE(V)	24	TOTAL FLUX(lm)	58.050	η UP,DN(C0-180)	1.8,48.1	
NOMINAL FLUX(lm)	58.0425	CIE CLASS	DIRECT	η UP,DN(C180-360)	1.8,48.3	
LAMPS INSIDE	1	η up (%)	3.6	CIBSE SHR NOM	1.25	
TEST VOLTAGE(V)		η down (%)	96.5	CIBSE SHR MAX	1.35	

LUMINOUS INTENSITY DISTRIBUTION DIAGRAM



C0 PLANE ISOLUX DIAGRAM (UNIT:lx)



C Range: 0 - 360DEG
C Interval: 30.0DEG
Test Speed: HIGH
Temperature: 25.3 °C
Operators:
Test Date: 2025-03-15

γ Range: 0 - 180DEG
γ Interval: 1.0DEG
Test System: EVERFINE GO-2000B_V1 SYSTEM V2.00.488
Humidity: 65.0%
Test Distance: 6.360m [K=1.0000]
Remarks:

ZONAL FLUX DIAGRAM

ZONAL FLUX DIAGRAM:

γ	C0	C45	C90	C135	C180	C225	C270	C315	γ	Φ zone	Φ total	%lum, lamp
10	18.69	18.68	18.64	18.62	18.61	18.65	18.70	18.71	0- 10	1.798	1.798	3.1,3.1
20	17.67	17.67	17.63	17.56	17.54	17.61	17.68	17.71	10- 20	5.145	6.943	12,12
30	16.03	16.03	15.99	15.90	15.88	15.96	16.06	16.10	20- 30	7.782	14.72	25.4,25.4
40	13.89	13.88	13.83	13.72	13.70	13.79	13.91	13.97	30- 40	9.366	24.09	41.5,41.5
50	11.36	11.35	11.29	11.17	11.16	11.25	11.38	11.45	40- 50	9.725	33.81	58.3,58.3
60	8.620	8.598	8.538	8.400	8.409	8.486	8.623	8.710	50- 60	8.893	42.71	73.6,73.6
70	5.783	5.762	5.712	5.554	5.563	5.637	5.783	5.871	60- 70	7.059	49.77	85.7,85.7
80	2.970	2.933	2.881	2.729	2.747	2.820	2.952	3.047	70- 80	4.530	54.30	93.5,93.5
90	0.6459	0.4955	0.2915	0.4168	0.5159	0.4491	0.2987	0.5464	80- 90	1.691	55.99	96.4,96.5
100	0.2450	0.2660	0.3006	0.2660	0.2283	0.2613	0.2857	0.2639	90-100	0.3206	56.31	97,97
110	0.2628	0.2845	0.3117	0.2898	0.2600	0.2848	0.3059	0.2825	100-110	0.2898	56.60	97.5,97.5
120	0.3032	0.3119	0.3377	0.3197	0.2889	0.3099	0.3261	0.3070	110-120	0.2970	56.90	98,98
130	0.3293	0.3379	0.3607	0.3474	0.3236	0.3365	0.3450	0.3295	120-130	0.2917	57.19	98.5,98.5
140	0.3553	0.3679	0.3868	0.3734	0.3542	0.3610	0.3637	0.3561	130-140	0.2713	57.46	99,99
150	0.3813	0.3954	0.4300	0.4065	0.3871	0.3870	0.3896	0.3834	140-150	0.2380	57.70	99.4,99.4
160	0.4102	0.4277	0.4493	0.4281	0.4160	0.4159	0.4098	0.4109	150-160	0.1886	57.89	99.7,99.7
170	0.4264	0.4448	0.4498	0.4431	0.4333	0.4405	0.4329	0.4339	160-170	0.1219	58.01	99.9,99.9
180	0.4362	0.4505	0.4502	0.4483	0.4333	0.4462	0.4502	0.4498	170-180	0.0422	58.05	100,100
DEG	LUMINOUS INTENSITY:cd									UNIT:lm		

Conical surface Flux(90deg): 28.985 lm

%lum = 49.9%

%lamp = 49.9%

Conical surface Flux(130deg): 46.518 lm

%lum = 80.1%

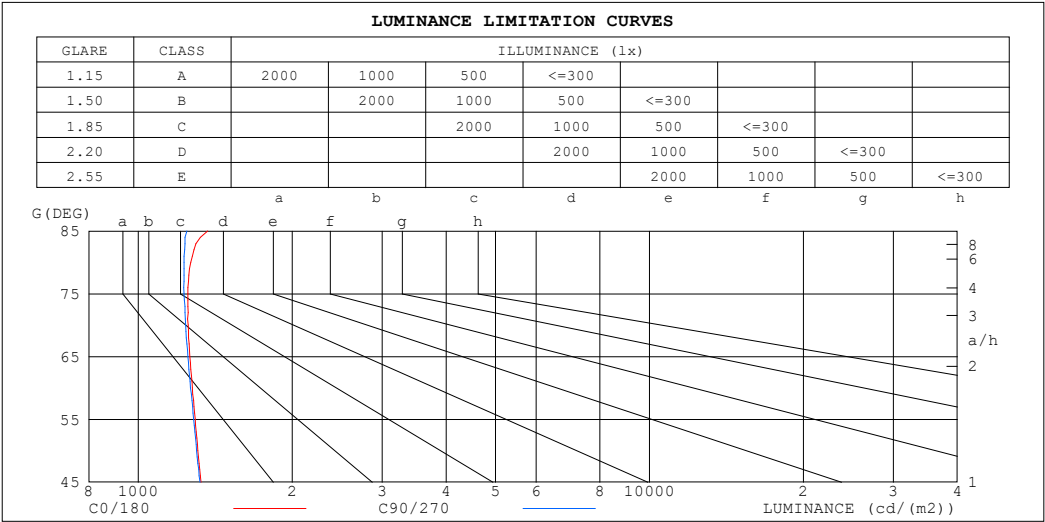
%lamp = 80.1%

C Range: 0 - 360DEG
 C Interval: 30.0DEG
 Test Speed: HIGH
 Temperature:25.3℃
 Operators:
 Test Date:2025-03-15

γ Range: 0 - 180DEG
 γ Interval: 1.0DEG
 Test System:EVERFINE GO-2000B_V1 SYSTEM V2.00.488
 Humidity:65.0%
 Test Distance:6.360m [K=1.0000]
 Remarks:

LUMINANCE LIMITATION CURVES

Test:U:24.00V I:0.5089A P:12.21W PF:1.000 Freq:0Hz Lamp Flux:58.0425x1 lm		
NAME: SF10-24V-5050-84-SPI-RGBW(2700K)-B	TYPE:	WEIGHT:
SPEC.:	DIM.: Length=1m	SERIAL No.:
MFR.: OLYMPIA lighting	SUR.:	Shielding Angle:



LUMINANCE cd/(m2)		
G (DEG)	C0/180	C90/270
85	1367	1244
80	1266	1229
75	1250	1229
70	1251	1237
65	1262	1250
60	1276	1265
55	1292	1282
50	1308	1301
45	1325	1320

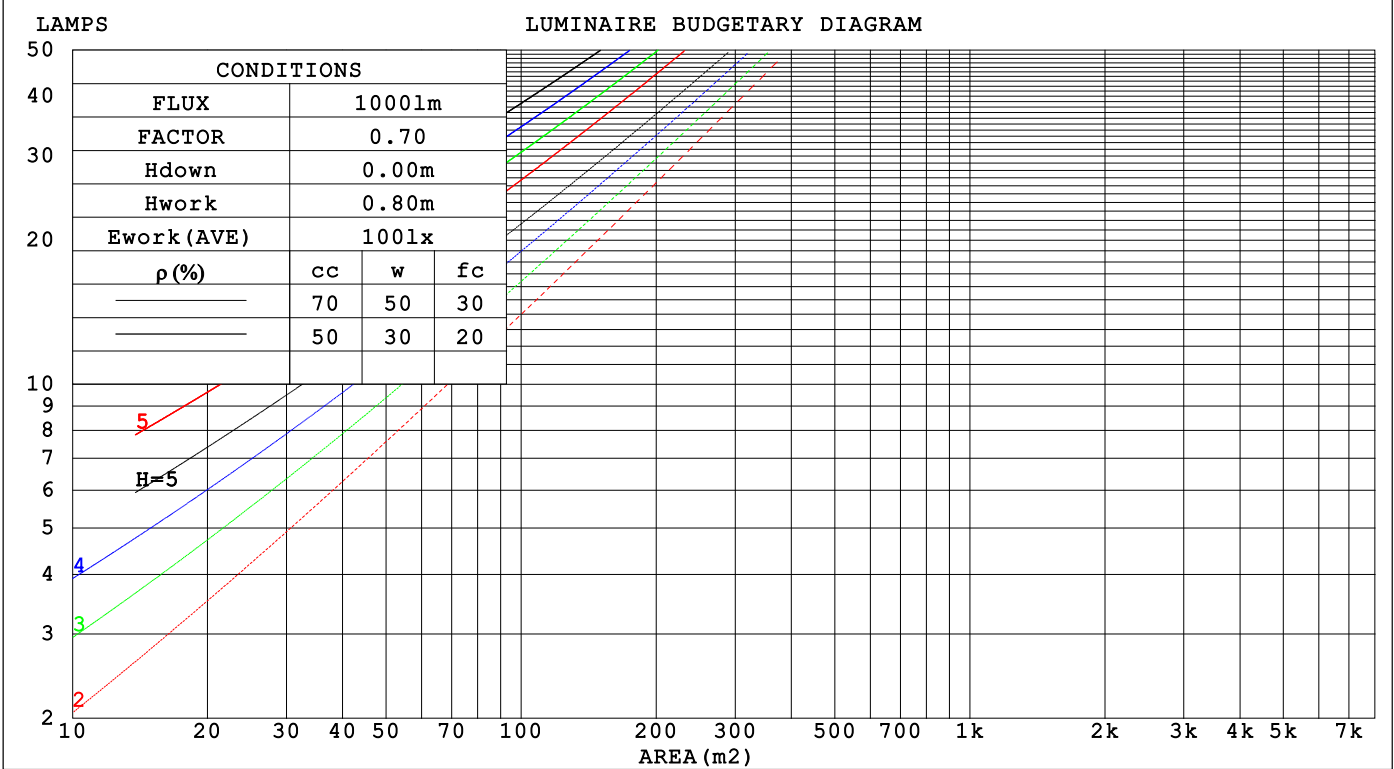
C Range: 0 - 360DEG
C Interval: 30.0DEG
Test Speed: HIGH
Temperature:25.3℃
Operators:
Test Date:2025-03-15

γ Range: 0 - 180DEG
γ Interval: 1.0DEG
Test System:EVERFINE GO-2000B_V1 SYSTEM V2.00.488
Humidity:65.0%
Test Distance:6.360m [K=1.0000]
Remarks:

CU AND LUMINAIRE BUDGETARY ESTIMATE DIAGRAM

Test:U:24.00V I:0.5089A P:12.21W PF:1.000 Freq:0Hz		
Lamp Flux:58.0425x1 lm		
NAME: SF10-24V-5050-84-SPI-RGBW(2700K)-B	TYPE:	WEIGHT:
SPEC.:	DIM.: Length=1m	SERIAL No.:
MFR.: OLYMPIA lighting	SUR.:	Shielding Angle:

pcc	80%			70%			50%			30%			10%			0
pw	50%	30%	10%	50%	30%	10%	50%	30%	10%	50%	30%	10%	50%	30%	10%	0
pfc	20%			20%			20%			20%			20%			0
RCR	RCR:Room Cavity Ratio Coefficients of Utilization(CU)															
0.0	1.18	1.18	1.18	1.15	1.15	1.15	1.09	1.09	1.09	1.04	1.04	1.04	.99	.99	.99	.96
1.0	1.02	.98	.94	.90	.95	.92	.95	.91	.88	.90	.87	.85	.86	.84	.82	.79
2.0	.89	.82	.76	.86	.80	.74	.82	.77	.72	.78	.74	.70	.75	.71	.68	.65
3.0	.78	.69	.63	.76	.68	.62	.72	.66	.60	.69	.63	.59	.66	.61	.57	.55
4.0	.69	.60	.53	.67	.59	.52	.64	.57	.51	.61	.55	.50	.59	.53	.49	.47
5.0	.61	.52	.45	.60	.51	.45	.57	.50	.44	.55	.48	.43	.53	.47	.42	.40
6.0	.55	.46	.39	.54	.45	.39	.52	.44	.39	.50	.43	.38	.48	.42	.37	.35
7.0	.50	.41	.35	.49	.40	.35	.47	.39	.34	.45	.39	.34	.44	.38	.33	.31
8.0	.45	.37	.31	.45	.36	.31	.43	.36	.30	.41	.35	.30	.40	.34	.30	.28
9.0	.42	.33	.28	.41	.33	.28	.40	.32	.27	.38	.32	.27	.37	.31	.27	.25
10.0	.38	.30	.25	.38	.30	.25	.37	.30	.25	.35	.29	.24	.34	.28	.24	.22



C Range: 0 - 360DEG

C Interval: 30.0DEG

Test Speed: HIGH

Temperature:25.3℃

Operators:

Test Date:2025-03-15

γ Range: 0 - 180DEG

γ Interval: 1.0DEG

Test System:EVERFINE GO-2000B_V1 SYSTEM V2.00.488

Humidity:65.0%

Test Distance:6.360m [K=1.0000]

Remarks:

WEC AND CCEC

Test:U:24.00V I:0.5089A P:12.21W PF:1.000 Freq:0Hz Lamp Flux:58.0425x1 lm		
NAME: SF10-24V-5050-84-SPI-RGBW(2700K)-B	TYPE:	WEIGHT:
SPEC.:	DIM.: Length=1m	SERIAL No.:
MFR.: OLympia lighting	SUR.:	Shielding Angle:

pcc	80%			70%			50%			30%			10%			0														
pw	50%	30%	10%	50%	30%	10%	50%	30%	10%	50%	30%	10%	50%	30%	10%	0														
pfc	20%			20%			20%			20%			20%			0														
RCR	RCR:Room Cavity Ratio															Wall Exitance Coefficients(WEC)														
0.0																														
1.0	.325	.185	.059	.317	.181	.057	.302	.173	.055	.288	.166	.053	.275	.159	.051															
2.0	.301	.165	.051	.293	.162	.050	.280	.156	.048	.267	.150	.047	.255	.144	.046															
3.0	.276	.147	.044	.269	.144	.043	.257	.139	.042	.246	.135	.041	.235	.130	.040															
4.0	.253	.131	.039	.247	.129	.038	.236	.125	.037	.226	.121	.037	.217	.118	.036															
5.0	.233	.119	.034	.228	.117	.034	.218	.114	.033	.209	.110	.033	.201	.107	.032															
6.0	.215	.108	.031	.211	.106	.031	.202	.104	.030	.194	.101	.030	.186	.098	.029															
7.0	.200	.099	.028	.196	.098	.028	.188	.095	.027	.181	.093	.027	.174	.090	.027															
8.0	.187	.091	.026	.183	.090	.025	.176	.088	.025	.169	.086	.025	.163	.084	.024															
9.0	.175	.084	.024	.171	.083	.023	.165	.082	.023	.159	.080	.023	.153	.078	.022															
10.0	.164	.079	.022	.161	.078	.022	.155	.076	.021	.150	.074	.021	.144	.073	.021															

pcc	80%			70%			50%			30%			10%			0
pw	50%	30%	10%	50%	30%	10%	50%	30%	10%	50%	30%	10%	50%	30%	10%	0
pfc	20%			20%			20%			20%			20%			0
RCR	RCR:Room Cavity Ratio						Ceiling Cavity Exitance Coefficients(CCEC)									
0.0	.218	.218	.218	.186	.186	.186	.127	.127	.127	.073	.073	.073	.023	.023	.023	
1.0	.209	.183	.160	.179	.157	.138	.122	.108	.095	.070	.063	.056	.023	.020	.018	
2.0	.201	.159	.124	.172	.137	.108	.118	.095	.075	.068	.055	.044	.022	.018	.014	
3.0	.193	.142	.101	.166	.122	.088	.114	.085	.061	.066	.050	.036	.021	.016	.012	
4.0	.186	.129	.085	.159	.111	.074	.109	.078	.052	.063	.045	.031	.020	.015	.010	
5.0	.178	.119	.075	.153	.103	.065	.105	.072	.046	.061	.042	.027	.020	.014	.009	
6.0	.171	.110	.067	.147	.095	.058	.101	.067	.041	.059	.039	.024	.019	.013	.008	
7.0	.164	.103	.061	.141	.090	.053	.097	.063	.038	.057	.037	.022	.018	.012	.007	
8.0	.157	.098	.057	.135	.085	.049	.094	.059	.035	.055	.035	.021	.018	.011	.007	
9.0	.151	.093	.053	.130	.080	.046	.090	.057	.033	.053	.033	.020	.017	.011	.007	
10.0	.145	.088	.051	.125	.077	.044	.087	.054	.031	.051	.032	.019	.016	.010	.006	

C Range: 0 - 360DEG
C Interval: 30.0DEG
Test Speed: HIGH
Temperature:25.3℃
Operators:
Test Date:2025-03-15

γ Range: 0 - 180DEG
γ Interval: 1.0DEG
Test System:EVERFINE GO-2000B_V1 SYSTEM V2.00.488
Humidity:65.0%
Test Distance:6.360m [K=1.0000]
Remarks:

UGR(Unified Glare Rating) Table

Test:U:24.00V I:0.5089A P:12.21W PF:1.000 Freq:0Hz Lamp Flux:58.0425x1 lm											
NAME: SF10-24V-5050-84-SPI-RGBW(2700K)-B						TYPE:		WEIGHT:			
SPEC.:						DIM.: Length=1m		SERIAL No.:			
MFR.: OLympia lighting						SUR.:		Shielding Angle:			
ceiling/cavity	0.7	0.7	0.5	0.5	0.3	0.7	0.7	0.5	0.5	0.3	
walls	0.5	0.3	0.5	0.3	0.3	0.5	0.3	0.5	0.3	0.3	
working plane	0.2	0.2	0.2	0.2	0.2	0.2	0.2	0.2	0.2	0.2	
Room dimensions		Viewed crosswise					Viewed endwise				
x = 2H y = 2H	2H	22.7	24.1	23.0	24.4	24.7	22.6	24.1	22.9	24.4	24.7
	3H	24.3	25.7	24.7	26.0	26.3	24.3	25.7	24.7	26.0	26.3
	4H	25.1	26.4	25.5	26.7	27.1	25.0	26.4	25.4	26.7	27.0
	6H	25.7	27.0	26.1	27.3	27.7	25.7	26.9	26.1	27.2	27.6
	8H	26.0	27.2	26.4	27.5	27.9	25.9	27.1	26.3	27.4	27.8
	12H	26.2	27.3	26.6	27.7	28.1	26.1	27.2	26.5	27.6	28.0
4H	2H	23.3	24.6	23.7	24.9	25.3	23.3	24.6	23.6	24.9	25.2
	3H	25.2	26.3	25.6	26.7	27.1	25.1	26.3	25.6	26.7	27.0
	4H	26.1	27.1	26.5	27.5	27.9	26.0	27.1	26.5	27.5	27.9
	6H	26.9	27.8	27.3	28.2	28.7	26.8	27.7	27.3	28.2	28.6
	8H	27.2	28.1	27.7	28.5	29.0	27.1	28.0	27.6	28.4	28.9
	12H	27.5	28.3	28.0	28.7	29.2	27.4	28.2	27.8	28.6	29.1
8H	4H	26.4	27.3	26.9	27.7	28.2	26.4	27.2	26.8	27.7	28.1
	6H	27.4	28.1	27.9	28.6	29.1	27.3	28.1	27.8	28.5	29.0
	8H	27.8	28.5	28.4	29.0	29.5	27.7	28.4	28.3	28.9	29.4
	12H	28.2	28.8	28.8	29.3	29.9	28.1	28.7	28.6	29.2	29.7
12H	4H	26.5	27.3	26.9	27.7	28.2	26.4	27.2	26.9	27.7	28.1
	6H	27.5	28.1	28.0	28.6	29.2	27.4	28.1	27.9	28.6	29.1
	8H	28.0	28.6	28.5	29.1	29.6	27.9	28.5	28.4	29.0	29.5
Variations with the observer position at spacings(CIE Pub.117):											
S = 1.0H		+ 0.1 / - 0.2					+ 0.1 / - 0.2				
1.5H		+ 0.2 / - 0.3					+ 0.2 / - 0.3				
2.0H		+ 0.1 / - 0.3					+ 0.1 / - 0.3				

CIE Pub.117, 58.04 lm Total Lamp Luminous Flux Correct (8log(F/F0) = -9.9)
Area: 0.0135 m2

C Range: 0 - 360DEG
C Interval: 30.0DEG
Test Speed: HIGH
Temperature:25.3℃
Operators:
Test Date:2025-03-15

γ Range: 0 - 180DEG
γ Interval: 1.0DEG
Test System:EVERFINE GO-2000B_V1 SYSTEM V2.00.488
Humidity:65.0%
Test Distance:6.360m [K=1.0000]
Remarks:

UTILIZATION FACTORS TABLE

Test:U:24.00V I:0.5089A P:12.21W PF:1.000 Freq:0Hz Lamp Flux:58.0425x1 lm		
NAME: SF10-24V-5050-84-SPI-RGBW(2700K)-B	TYPE:	WEIGHT:
SPEC.:	DIM.: Length=1m	SERIAL No.:
MFR.: OLympia lighting	SUR.:	Shielding Angle:

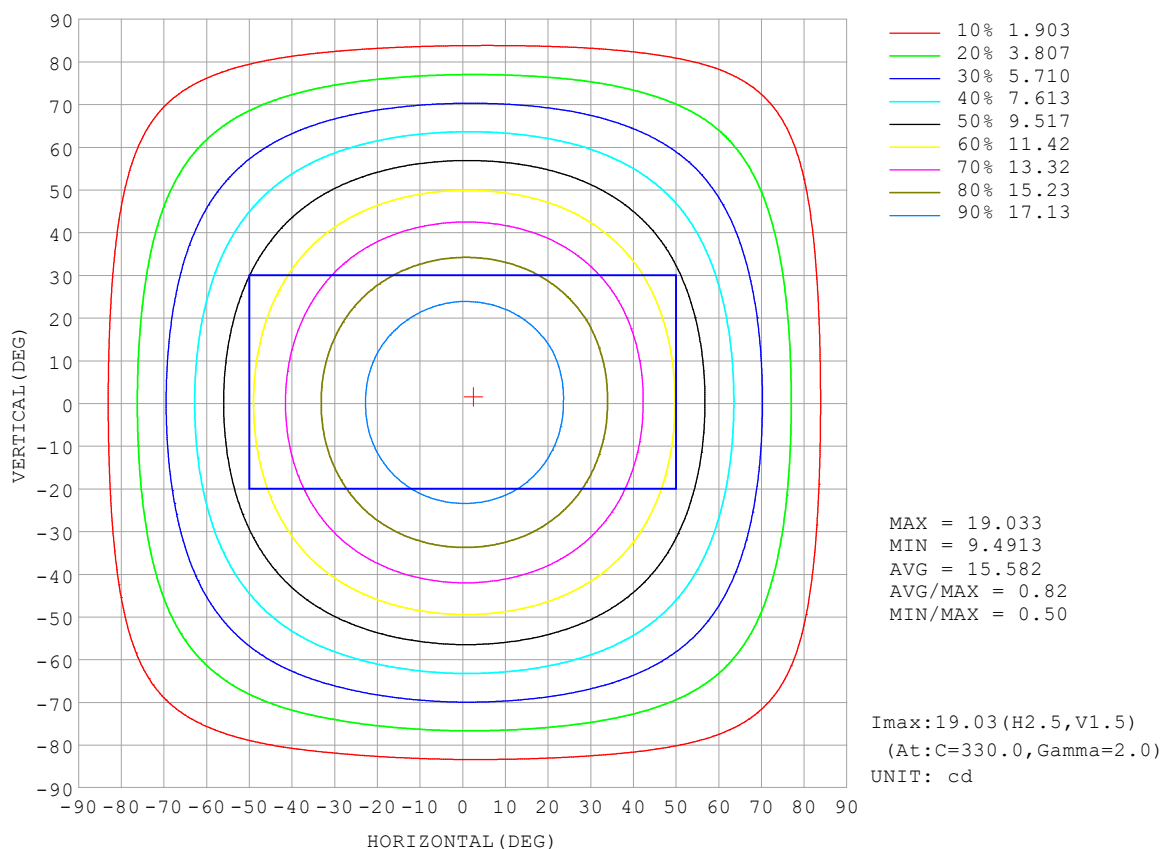
REFLECTANCE										
Ceiling	0.8	0.8	0.8	0.7	0.7	0.7	0.5	0.5	0.5	0
Walls	0.7	0.5	0.3	0.7	0.5	0.3	0.7	0.5	0.3	0
Working plane	0.2	0.2	0.2	0.2	0.2	0.2	0.2	0.2	0.2	0
ROOM INDEX	UTILIZATION FACTORS (PERCENT) $k(RI) \times RCR = 5$									
$k = 0.60$	56	44	37	55	44	37	54	43	37	30
0.80	66	54	46	64	53	46	62	52	45	38
1.00	74	62	55	72	62	55	70	63	54	46
1.25	81	70	63	79	69	62	76	67	61	53
1.50	86	76	68	84	75	68	81	72	66	58
2.00	93	84	77	91	82	76	87	80	74	66
2.50	97	89	82	95	87	81	90	84	79	70
3.00	100	93	87	98	91	86	93	88	83	74
4.00	104	98	93	102	96	92	97	92	89	79
5.00	107	102	97	104	100	96	99	95	92	82
ROOM INDEX	UF (total)									Direct
According to DIN EN 13032-2 2004			Suspended					SHRNOM = 1.25		

C Range: 0 - 360DEG
 C Interval: 30.0DEG
 Test Speed: HIGH
 Temperature: 25.3 °C
 Operators:
 Test Date: 2025-03-15

γ Range: 0 - 180DEG
 γ Interval: 1.0DEG
 Test System: EVERFINE GO-2000B_V1 SYSTEM V2.00.488
 Humidity: 65.0%
 Test Distance: 6.360m [K=1.0000]
 Remarks:

ISOCANDELA DIAGRAM

Test:U:24.00V I:0.5089A P:12.21W PF:1.000 Freq:0Hz Lamp Flux:58.0425x1 lm		
NAME: SF10-24V-5050-84-SPI-RGBW(2700K)-B	TYPE:	WEIGHT:
SPEC.:	DIM.: Length=1m	SERIAL No.:
MFR.: OLympia lighting	SUR.:	Shielding Angle:

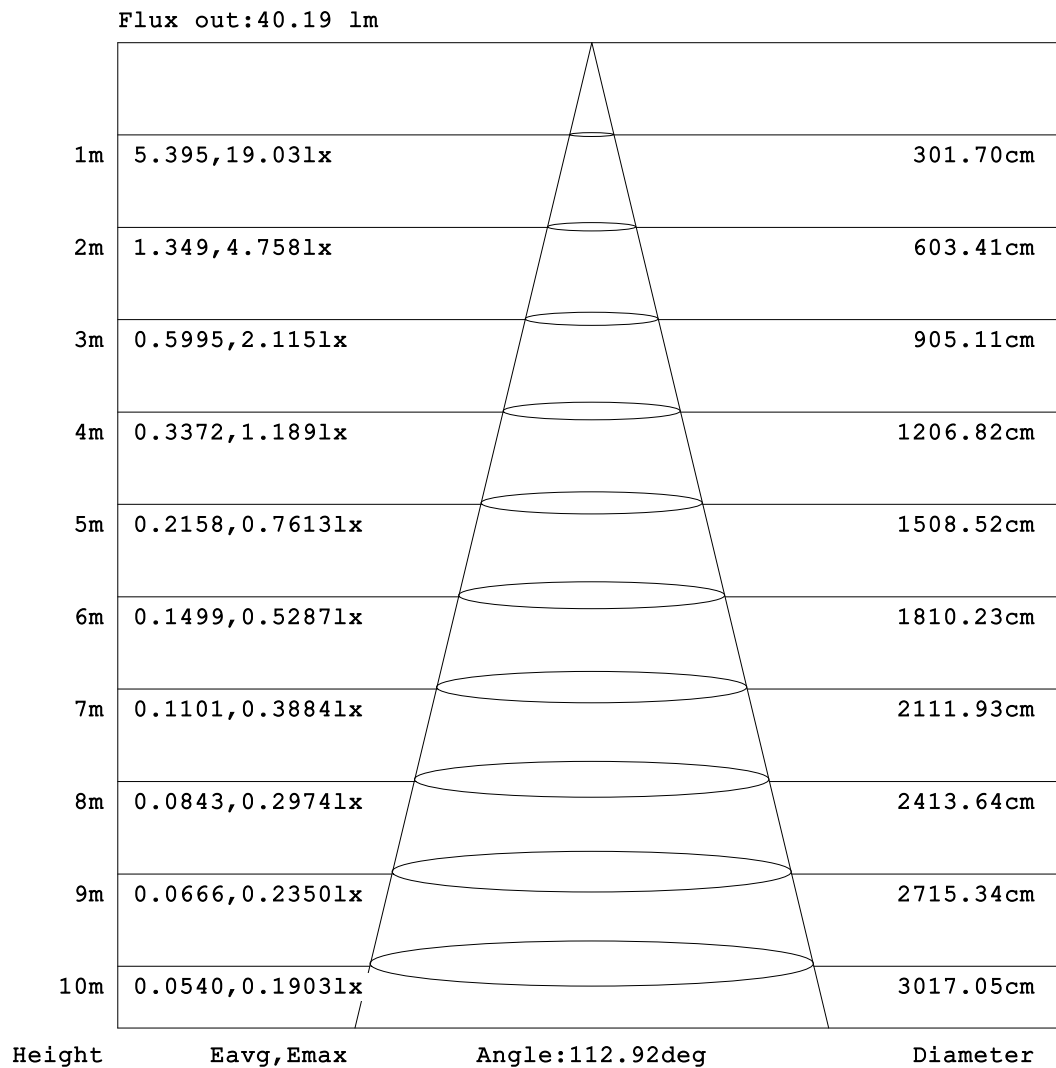


C Range: 0 - 360DEG
C Interval: 30.0DEG
Test Speed: HIGH
Temperature:25.3℃
Operators:
Test Date:2025-03-15

γ Range: 0 - 180DEG
γ Interval: 1.0DEG
Test System:EVERFINE GO-2000B_V1 SYSTEM V2.00.488
Humidity:65.0%
Test Distance:6.360m [K=1.0000]
Remarks:

AAI Figure

Test:U:24.00V I:0.5089A P:12.21W PF:1.000 Freq:0Hz Lamp Flux:58.0425x1 lm		
NAME: SF10-24V-5050-84-SPI-RGBW(2700K)-B	TYPE:	WEIGHT:
SPEC.:	DIM.: Length=1m	SERIAL No.:
MFR.: OLympia lighting	SUR.:	Shielding Angle:



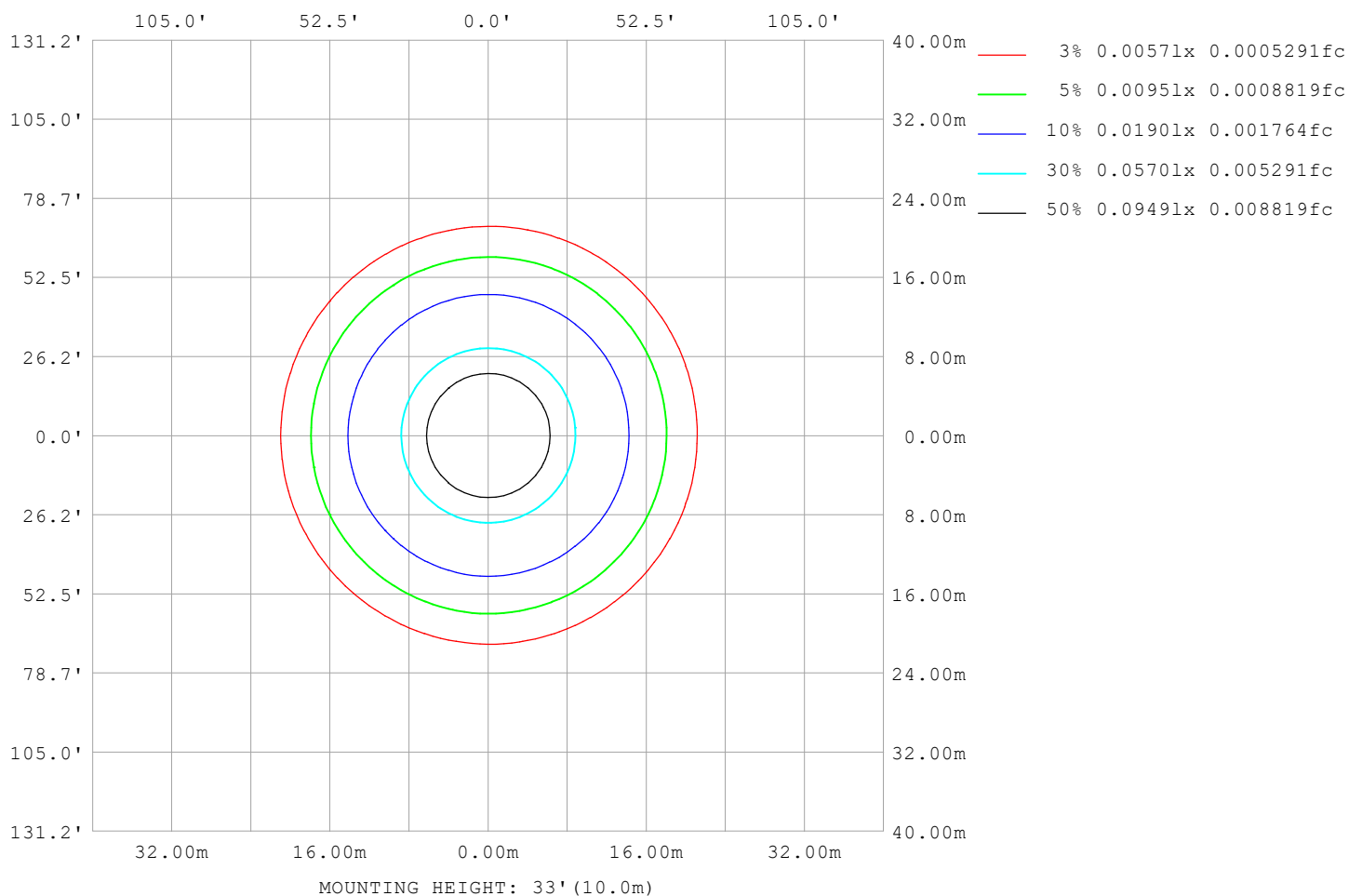
Note:The Curves indicate the illuminated area and the average illumination when the luminaire is at different distance.

C Range: 0 - 360DEG
C Interval: 30.0DEG
Test Speed: HIGH
Temperature:25.3℃
Operators:
Test Date:2025-03-15

γ Range: 0 - 180DEG
γ Interval: 1.0DEG
Test System:EVERFINE GO-2000B_V1 SYSTEM V2.00.488
Humidity:65.0%
Test Distance:6.360m [K=1.0000]
Remarks:

ISOLUX DIAGRAM

Test:U:24.00V I:0.5089A P:12.21W PF:1.000 Freq:0Hz Lamp Flux:58.0425x1 lm		
NAME: SF10-24V-5050-84-SPI-RGBW(2700K)-B	TYPE:	WEIGHT:
SPEC.:	DIM.: Length=1m	SERIAL No.:
MFR.: OLympia lighting	SUR.:	Shielding Angle:



C Range: 0 - 360DEG
C Interval: 30.0DEG
Test Speed: HIGH
Temperature: 25.3°C
Operators:
Test Date: 2025-03-15

γ Range: 0 - 180DEG
γ Interval: 1.0DEG
Test System: EVERFINE GO-2000B_V1 SYSTEM V2.00.488
Humidity: 65.0%
Test Distance: 6.360m [K=1.0000]
Remarks:

LED Avg.L Report

Test:U:24.00V I:0.5089A P:12.21W PF:1.000 Freq:0Hz Lamp Flux:58.0425x1 lm		
NAME: SF10-24V-5050-84-SPI-RGBW(2700K)-B	TYPE:	WEIGHT:
SPEC.:	DIM.: Length=1m	SERIAL No.:
MFR.: OLympia lighting	SUR.:	Shielding Angle:

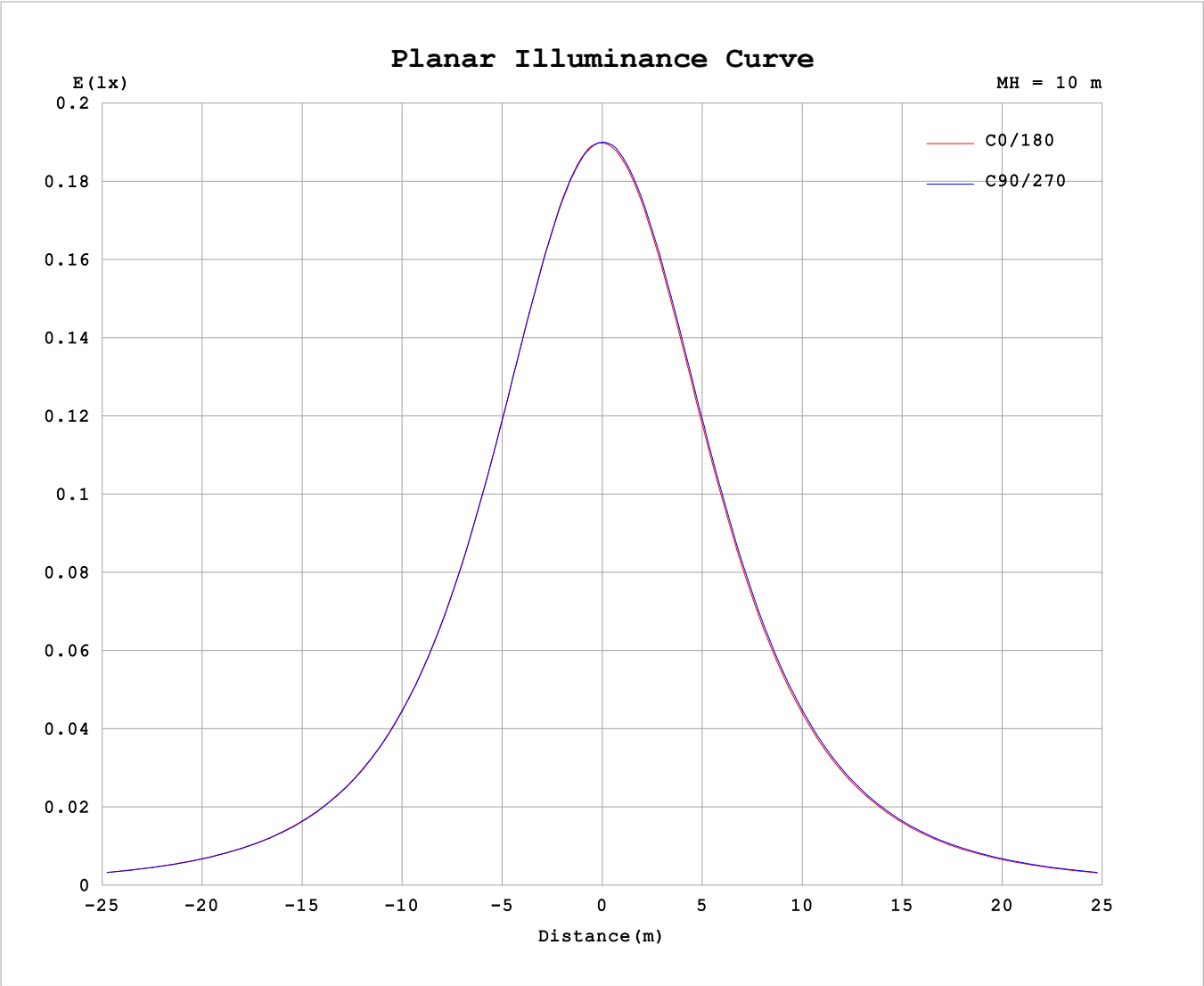
AvgL	cd/m2
L_0~180 (65) av	1244
L_0~180 (75) av	1220
L_0~180 (85) av	1279
L_90~270 (65) av	1256
L_90~270 (75) av	1239
L_90~270 (85) av	1283
L_45 (65) av	1250
L_45 (75) av	1227
L_45 (85) av	1266

Standard: GB/T 29293-2012

C Range: 0 - 360DEG
C Interval: 30.0DEG
Test Speed: HIGH
Temperature:25.3℃
Operators:
Test Date:2025-03-15

γ Range: 0 - 180DEG
γ Interval: 1.0DEG
Test System:EVERFINE GO-2000B_V1 SYSTEM V2.00.488
Humidity:65.0%
Test Distance:6.360m [K=1.0000]
Remarks:

Planar Illuminance Curve



C Range: 0 - 360DEG	γ Range: 0 - 180DEG
C Interval: 30.0DEG	γ Interval: 1.0DEG
Test Speed: HIGH	Test System:EVERFINE GO-2000B_V1 SYSTEM V2.00.488
Temperature:25.3℃	Humidity:65.0%
Operators:	Test Distance:6.360m [K=1.0000]
Test Date:2025-03-15	Remarks:

LUMINOUS DISTRIBUTION INTENSITY DATA

Test:U:24.00V I:0.5089A P:12.21W PF:1.000 Freq:0Hz Lamp Flux:58.0425x1 lm																	
NAME: SF10-24V-5050-84-SPI-RGBW(2700K)-B									TYPE:						WEIGHT:		
SPEC.:									DIM.: Length=1m						SERIAL No.:		
MFR.: OLympia lighting									SUR.:						Shielding Angle:		

Table--1

UNIT: cd

C (DEG) γ (DEG)	0	30	60	90	120	150	180	210	240	270	300	330						
0	19.0	19.0	19.0	19.0	19.0	19.0	19.0	19.0	19.0	19.0	19.0	19.0						
5	18.9	18.9	18.9	18.9	18.9	18.9	18.9	18.9	18.9	18.9	18.9	18.9						
10	18.7	18.7	18.7	18.6	18.6	18.6	18.6	18.6	18.6	18.7	18.7	18.7						
15	18.3	18.3	18.3	18.2	18.2	18.2	18.2	18.2	18.2	18.3	18.3	18.3						
20	17.7	17.7	17.7	17.6	17.6	17.5	17.5	17.6	17.6	17.7	17.7	17.7						
25	16.9	16.9	16.9	16.9	16.8	16.8	16.8	16.8	16.9	16.9	17.0	17.0						
30	16.0	16.0	16.0	16.0	15.9	15.9	15.9	15.9	16.0	16.1	16.1	16.1						
35	15.0	15.0	15.0	15.0	14.9	14.8	14.8	14.9	15.0	15.0	15.1	15.1						
40	13.9	13.9	13.9	13.8	13.7	13.7	13.7	13.7	13.8	13.9	14.0	14.0						
45	12.7	12.7	12.6	12.6	12.5	12.4	12.5	12.5	12.6	12.7	12.8	12.7						
50	11.4	11.4	11.3	11.3	11.2	11.1	11.2	11.2	11.3	11.4	11.5	11.4						
55	10.0	10.0	9.97	9.93	9.83	9.77	9.80	9.84	9.93	10.0	10.1	10.1						
60	8.62	8.62	8.58	8.54	8.43	8.37	8.41	8.44	8.53	8.62	8.72	8.70						
65	7.20	7.21	7.17	7.13	7.00	6.95	6.99	7.01	7.11	7.21	7.30	7.29						
70	5.78	5.78	5.74	5.71	5.58	5.53	5.56	5.59	5.68	5.78	5.87	5.87						
75	4.37	4.37	4.32	4.30	4.16	4.12	4.15	4.17	4.27	4.36	4.45	4.46						
80	2.97	2.96	2.90	2.88	2.75	2.71	2.75	2.78	2.86	2.95	3.04	3.05						
85	1.61	1.58	1.50	1.46	1.34	1.34	1.40	1.40	1.46	1.56	1.65	1.67						
90	0.65	0.57	0.42	0.29	0.37	0.47	0.52	0.51	0.39	0.30	0.47	0.62						
95	0.25	0.25	0.27	0.30	0.26	0.28	0.22	0.24	0.27	0.29	0.29	0.25						
100	0.24	0.27	0.27	0.30	0.26	0.27	0.23	0.24	0.28	0.29	0.28	0.25						
105	0.25	0.27	0.27	0.31	0.27	0.29	0.25	0.24	0.30	0.29	0.30	0.24						
110	0.26	0.29	0.28	0.31	0.28	0.30	0.26	0.26	0.31	0.31	0.31	0.26						
115	0.28	0.31	0.29	0.32	0.30	0.31	0.28	0.27	0.32	0.32	0.32	0.27						
120	0.30	0.32	0.30	0.34	0.31	0.33	0.29	0.29	0.33	0.33	0.33	0.28						
125	0.32	0.34	0.31	0.35	0.32	0.34	0.31	0.30	0.35	0.34	0.35	0.30						
130	0.33	0.35	0.33	0.36	0.34	0.36	0.32	0.31	0.36	0.35	0.35	0.31						
135	0.34	0.36	0.34	0.37	0.35	0.37	0.34	0.33	0.37	0.35	0.36	0.32						
140	0.36	0.38	0.36	0.39	0.36	0.38	0.35	0.34	0.38	0.36	0.38	0.34						
145	0.37	0.39	0.38	0.41	0.38	0.40	0.37	0.36	0.39	0.38	0.39	0.35						
150	0.38	0.40	0.39	0.43	0.40	0.41	0.39	0.37	0.40	0.39	0.40	0.36						
155	0.39	0.41	0.41	0.45	0.40	0.43	0.40	0.39	0.42	0.40	0.42	0.38						
160	0.41	0.43	0.43	0.45	0.42	0.44	0.42	0.40	0.43	0.41	0.43	0.39						
165	0.42	0.44	0.44	0.45	0.43	0.45	0.43	0.41	0.44	0.42	0.44	0.41						
170	0.43	0.45	0.44	0.45	0.44	0.45	0.43	0.43	0.45	0.43	0.45	0.42						
175	0.44	0.45	0.45	0.45	0.44	0.45	0.43	0.44	0.45	0.44	0.45	0.44						
180	0.44	0.45	0.45	0.45	0.45	0.45	0.43	0.44	0.45	0.45	0.45	0.45						

C Range: 0 - 360DEG

C Interval: 30.0DEG

Test Speed: HIGH

Temperature:25.3℃

Operators:

Test Date:2025-03-15

γ Range: 0 - 180DEG

γ Interval: 1.0DEG

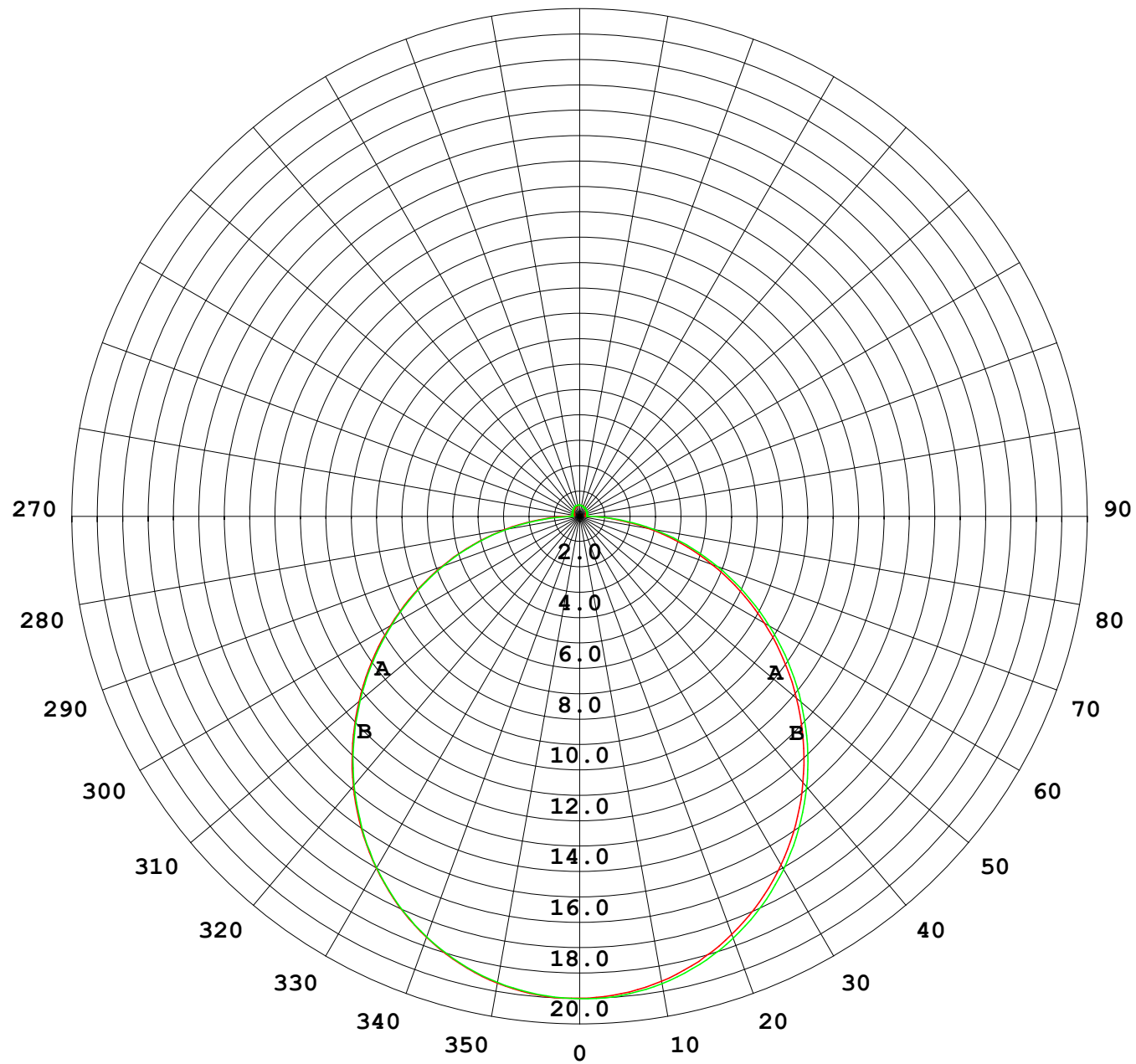
Test System:EVERFINE GO-2000B_V1 SYSTEM V2.00.488

Humidity:65.0%

Test Distance:6.360m [K=1.0000]

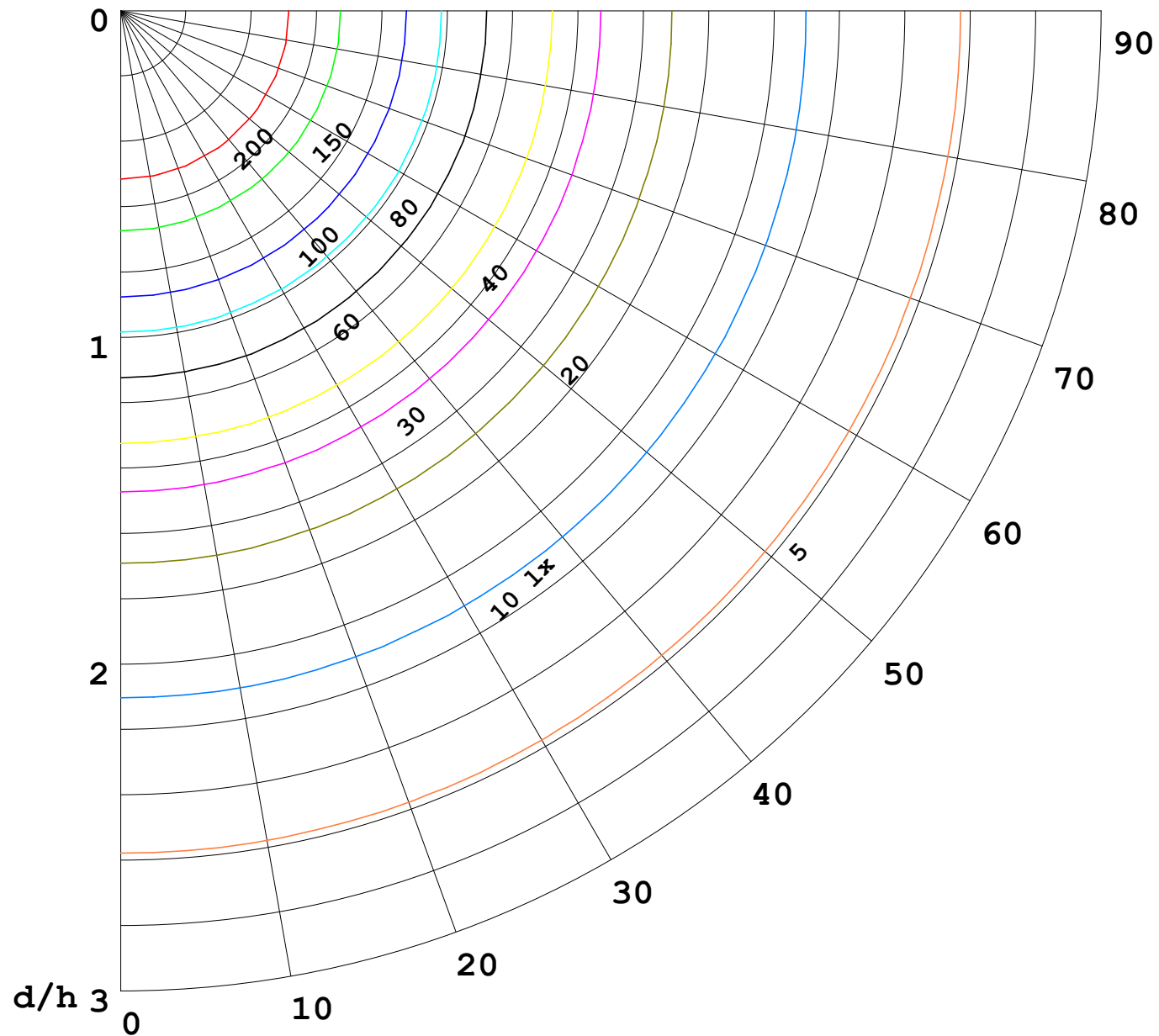
Remarks:

I (cd)



1000 lm

$\kappa = 1$



F = 1000 lm
 K = 0.7
 Hcc = 0.8 m
 Hfc = 0.0 m
 Eave = 100 lx

	Pcc	Pw	Pfc
—————	70	50	30
—————	50	30	20

