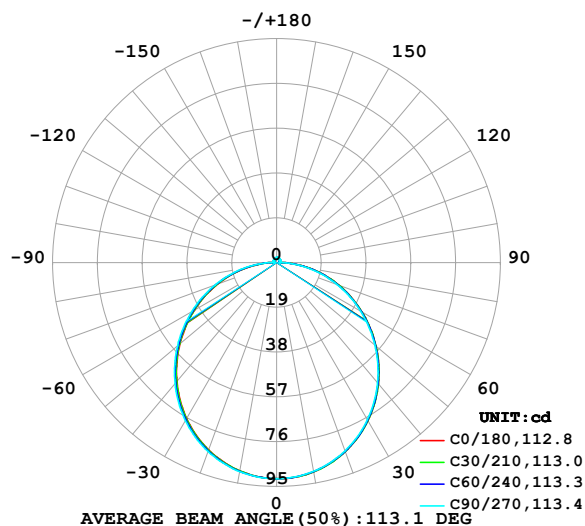


LUMINAIRE PHOTOMETRIC TEST REPORT

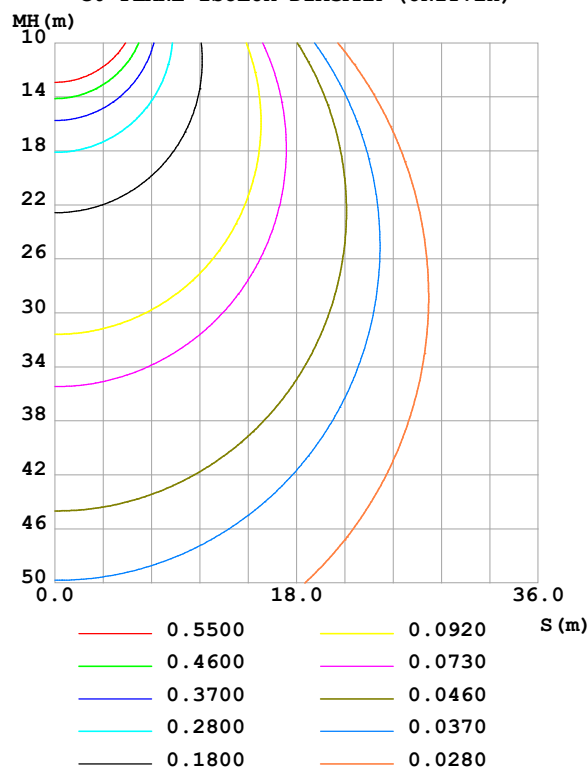
Test:U:24.00V I:0.2856A P:6.854W PF:1.000 Freq:0Hz Lamp Flux:279.882x1 lm		
NAME: SF10-24V-5050-84-SPI-RGBW(4000K)-G	TYPE:	WEIGHT:
SPEC.:	DIM.: Length=1m	SERIAL No.:
MFR.: OLympia lighting	SUR.:	Shielding Angle:

DATA OF LAMP		PHOTOMETRIC DATA				Eff: 40.83 lm/W
MODEL	2835	I _{max} (cd)	91.70	S/MH(C0/180)	1.24	
NOMINAL POWER(W)		LOR(%)	100.0	S/MH(C90/270)	1.26	
RATED VOLTAGE(V)	24	TOTAL FLUX(lm)	279.88	η UP,DN(C0-180)	1.8,48.2	
NOMINAL FLUX(lm)	279.882	CIE CLASS	DIRECT	η UP,DN(C180-360)	1.8,48.3	
LAMPS INSIDE	1	η up(%)	3.6	CIBSE SHR NOM	1.25	
TEST VOLTAGE(V)		η down(%)	96.4	CIBSE SHR MAX	1.35	

LUMINOUS INTENSITY DISTRIBUTION DIAGRAM



C0 PLANE ISOLUX DIAGRAM (UNIT:lx)



C Range: 0 - 360DEG
C Interval: 30.0DEG
Test Speed: HIGH
Temperature:25.3℃
Operators:
Test Date:2025-03-15

γ Range: 0 - 180DEG
γ Interval: 1.0DEG
Test System:EVERFINE GO-2000B_V1 SYSTEM V2.00.488
Humidity:65.0%
Test Distance:6.360m [K=1.0000]
Remarks:

ZONAL FLUX DIAGRAM

ZONAL FLUX DIAGRAM:

γ	C0	C45	C90	C135	C180	C225	C270	C315	γ	Φ zone	Φ total	%lum,lamp
10	90.14	90.13	89.95	89.75	89.76	89.87	90.09	90.25	0- 10	8.671	8.671	3.1,3.1
20	85.28	85.27	84.97	84.59	84.49	84.81	85.26	85.49	10- 20	24.80	33.48	12,12
30	77.45	77.42	77.06	76.50	76.38	76.80	77.42	77.73	20- 30	37.51	70.99	25.4,25.4
40	67.14	67.09	66.63	65.96	65.82	66.33	67.08	67.49	30- 40	45.15	116.1	41.5,41.5
50	55.04	54.94	54.41	53.67	53.52	54.07	54.92	55.38	40- 50	46.89	163.0	58.2,58.2
60	41.80	41.68	41.12	40.32	40.23	40.74	41.60	42.15	50- 60	42.87	205.9	73.6,73.6
70	28.16	27.98	27.39	26.59	26.53	27.03	27.87	28.47	60- 70	34.02	239.9	85.7,85.7
80	14.59	14.34	13.70	12.95	12.95	13.41	14.23	14.85	70- 80	21.82	261.7	93.5,93.5
90	3.232	2.498	1.305	2.007	2.457	2.119	1.428	2.769	80- 90	8.157	269.9	96.4,96.4
100	1.168	1.261	1.377	1.318	1.076	1.264	1.429	1.249	90-100	1.525	271.4	97,97
110	1.317	1.345	1.447	1.449	1.223	1.401	1.559	1.381	100-110	1.407	272.8	97.5,97.5
120	1.467	1.459	1.583	1.581	1.370	1.524	1.640	1.497	110-120	1.440	274.3	98,98
130	1.617	1.632	1.715	1.706	1.525	1.649	1.730	1.614	120-130	1.417	275.7	98.5,98.5
140	1.761	1.774	1.834	1.833	1.678	1.779	1.831	1.726	130-140	1.324	277.0	99,99
150	1.891	1.906	1.981	1.967	1.837	1.912	1.952	1.856	140-150	1.156	278.2	99.4,99.4
160	2.030	2.039	2.111	2.093	1.998	2.042	2.053	1.998	150-160	0.9144	279.1	99.7,99.7
170	2.110	2.160	2.203	2.184	2.102	2.146	2.154	2.131	160-170	0.5942	279.7	99.9,99.9
180	2.162	2.211	2.232	2.219	2.162	2.209	2.226	2.217	170-180	0.2077	279.9	100,100
DEG	LUMINOUS INTENSITY:cd									UNIT:lm		

Conical surface Flux(90deg): 139.74 lm

%lum = 49.9%

%lamp = 49.9%

Conical surface Flux(130deg): 224.26 lm

%lum = 80.1%

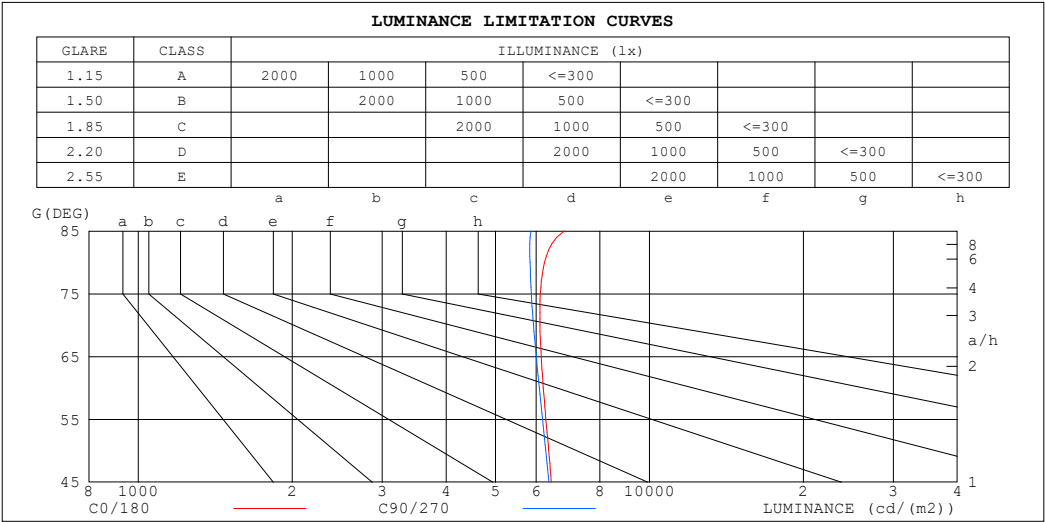
%lamp = 80.1%

C Range: 0 - 360DEG
 C Interval: 30.0DEG
 Test Speed: HIGH
 Temperature:25.3℃
 Operators:
 Test Date:2025-03-15

γ Range: 0 - 180DEG
 γ Interval: 1.0DEG
 Test System:EVERFINE GO-2000B_V1 SYSTEM V2.00.488
 Humidity:65.0%
 Test Distance:6.360m [K=1.0000]
 Remarks:

LUMINANCE LIMITATION CURVES

Test:U:24.00V I:0.2856A P:6.854W PF:1.000 Freq:0Hz Lamp Flux:279.882x1 lm		
NAME: SF10-24V-5050-84-SPI-RGBW(4000K)-G	TYPE:	WEIGHT:
SPEC.:	DIM.: Length=1m	SERIAL No.:
MFR.: OLympia lighting	SUR.:	Shielding Angle:



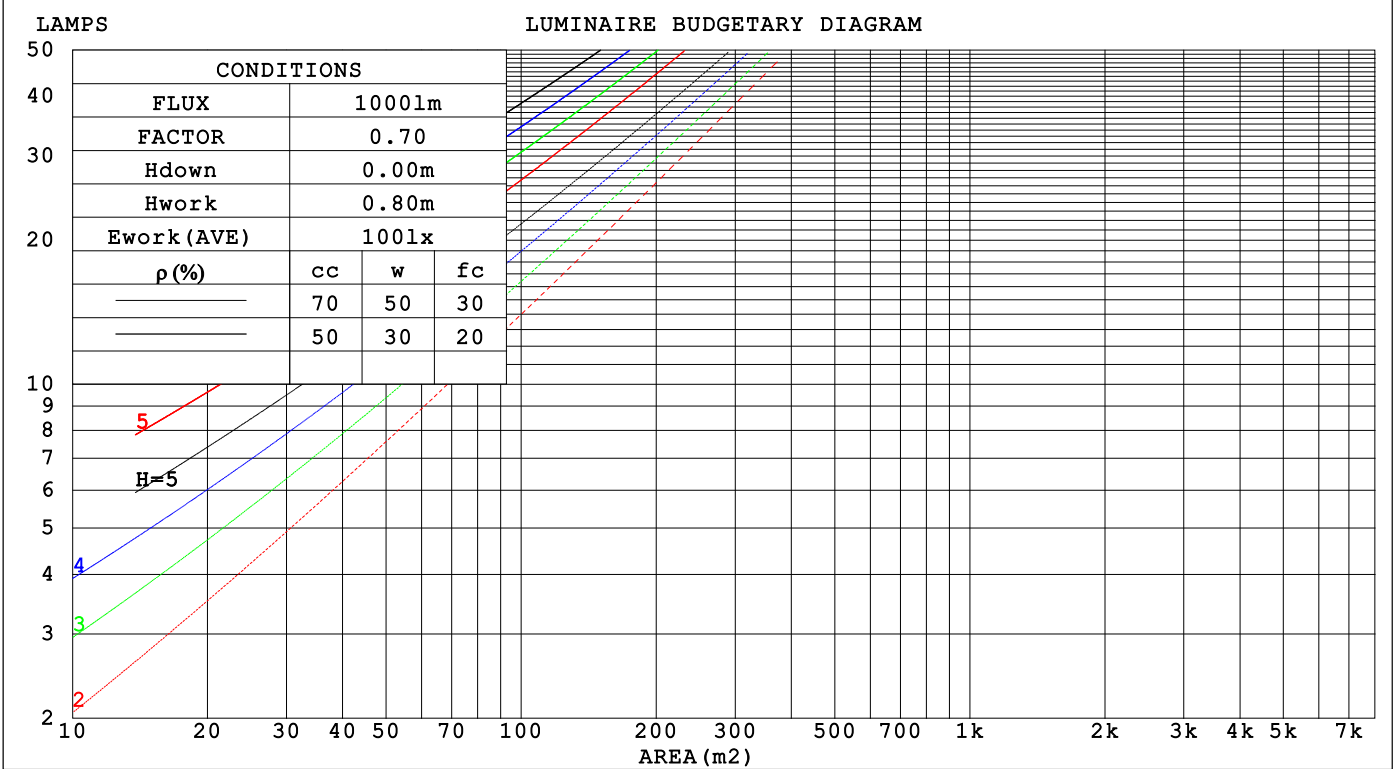
LUMINANCE cd/(m2)		
G (DEG)	C0/180	C90/270
85	6818	5866
80	6231	5839
75	6118	5877
70	6105	5930
65	6141	6006
60	6199	6088
55	6271	6176
50	6350	6267
45	6426	6355

C Range: 0 - 360DEG	γ Range: 0 - 180DEG
C Interval: 30.0DEG	γ Interval: 1.0DEG
Test Speed: HIGH	Test System:EVERFINE GO-2000B_V1 SYSTEM V2.00.488
Temperature:25.3℃	Humidity:65.0%
Operators:	Test Distance:6.360m [K=1.0000]
Test Date:2025-03-15	Remarks:

CU AND LUMINAIRE BUDGETARY ESTIMATE DIAGRAM

Test:U:24.00V I:0.2856A P:6.854W PF:1.000 Freq:0Hz		
Lamp Flux:279.882x1 lm		
NAME: SF10-24V-5050-84-SPI-RGBW(4000K)-G	TYPE:	WEIGHT:
SPEC.:	DIM.: Length=1m	SERIAL No.:
MFR.: OLYMPIA lighting	SUR.:	Shielding Angle:

pcc	80%			70%			50%			30%			10%			0
p _w	50%	30%	10%	50%	30%	10%	50%	30%	10%	50%	30%	10%	50%	30%	10%	0
p _{fc}	20%			20%			20%			20%			20%			0
RCR	RCR:Room Cavity Ratio Coefficients of Utilization(CU)															
0.0	1.18	1.18	1.18	1.15	1.15	1.15	1.09	1.09	1.09	1.04	1.04	1.04	.99	.99	.99	.96
1.0	1.02	.98	.94	.00	.95	.92	.95	.91	.88	.90	.87	.85	.86	.84	.82	.79
2.0	.89	.82	.76	.86	.80	.74	.82	.77	.72	.78	.74	.70	.75	.71	.68	.65
3.0	.78	.69	.63	.76	.68	.62	.72	.66	.60	.69	.63	.59	.66	.61	.57	.55
4.0	.69	.60	.53	.67	.59	.52	.64	.57	.51	.61	.55	.50	.59	.53	.49	.47
5.0	.61	.52	.45	.60	.51	.45	.57	.50	.44	.55	.48	.43	.53	.47	.42	.40
6.0	.55	.46	.39	.54	.45	.39	.52	.44	.39	.50	.43	.38	.48	.42	.37	.35
7.0	.50	.41	.35	.49	.40	.35	.47	.39	.34	.45	.39	.34	.44	.38	.33	.31
8.0	.45	.37	.31	.45	.36	.31	.43	.36	.30	.41	.35	.30	.40	.34	.30	.28
9.0	.42	.33	.28	.41	.33	.28	.40	.32	.27	.38	.32	.27	.37	.31	.27	.25
10.0	.38	.30	.25	.38	.30	.25	.37	.30	.25	.35	.29	.24	.34	.28	.24	.22



C Range: 0 - 360DEG
C Interval: 30.0DEG
Test Speed: HIGH
Temperature:25.3℃
Operators:
Test Date:2025-03-15

γ Range: 0 - 180DEG
γ Interval: 1.0DEG
Test System:EVERFINE GO-2000B_V1 SYSTEM V2.00.488
Humidity:65.0%
Test Distance:6.360m [K=1.0000]
Remarks:

WEC AND CCEC

Test:U:24.00V I:0.2856A P:6.854W PF:1.000 Freq:0Hz Lamp Flux:279.882x1 lm		
NAME: SF10-24V-5050-84-SPI-RGBW(4000K)-G	TYPE:	WEIGHT:
SPEC.:	DIM.: Length=1m	SERIAL No.:
MFR.: OLympia lighting	SUR.:	Shielding Angle:

pcc	80%			70%			50%			30%			10%			0														
pw	50%	30%	10%	50%	30%	10%	50%	30%	10%	50%	30%	10%	50%	30%	10%	0														
pfc	20%			20%			20%			20%			20%			0														
RCR	RCR:Room Cavity Ratio															Wall Exitance Coefficients(WEC)														
0.0																														
1.0	.325	.185	.059	.317	.181	.057	.302	.173	.055	.288	.166	.053	.274	.159	.051															
2.0	.300	.165	.051	.293	.162	.050	.280	.155	.048	.267	.150	.047	.255	.144	.046															
3.0	.276	.147	.044	.269	.144	.043	.257	.139	.042	.246	.135	.041	.235	.130	.040															
4.0	.253	.131	.039	.247	.129	.038	.236	.125	.037	.226	.121	.037	.217	.118	.036															
5.0	.233	.119	.034	.228	.117	.034	.218	.114	.033	.209	.110	.033	.201	.107	.032															
6.0	.215	.108	.031	.211	.106	.031	.202	.104	.030	.194	.101	.030	.186	.098	.029															
7.0	.200	.099	.028	.196	.098	.028	.188	.095	.027	.181	.093	.027	.174	.090	.027															
8.0	.187	.091	.026	.183	.090	.025	.176	.088	.025	.169	.086	.025	.163	.084	.024															
9.0	.175	.084	.024	.171	.083	.023	.165	.081	.023	.159	.080	.023	.153	.078	.022															
10.0	.164	.079	.022	.161	.078	.022	.155	.076	.021	.150	.074	.021	.144	.073	.021															

pcc	80%			70%			50%			30%			10%			0
pw	50%	30%	10%	50%	30%	10%	50%	30%	10%	50%	30%	10%	50%	30%	10%	0
pfc	20%			20%			20%			20%			20%			0
RCR	RCR:Room Cavity Ratio						Ceiling Cavity Exitance Coefficients (CCEC)									
0.0	.218	.218	.218	.186	.186	.186	.127	.127	.127	.073	.073	.073	.023	.023	.023	
1.0	.209	.183	.161	.179	.157	.138	.122	.108	.096	.070	.063	.056	.023	.020	.018	
2.0	.201	.159	.125	.172	.137	.108	.118	.095	.075	.068	.055	.044	.022	.018	.014	
3.0	.193	.142	.101	.166	.123	.088	.114	.085	.062	.066	.050	.036	.021	.016	.012	
4.0	.186	.129	.086	.159	.111	.074	.110	.078	.052	.063	.045	.031	.020	.015	.010	
5.0	.178	.119	.075	.153	.103	.065	.105	.072	.046	.061	.042	.027	.020	.014	.009	
6.0	.171	.110	.067	.147	.096	.058	.101	.067	.041	.059	.039	.025	.019	.013	.008	
7.0	.164	.104	.061	.141	.090	.053	.097	.063	.038	.057	.037	.022	.018	.012	.007	
8.0	.157	.098	.057	.136	.085	.049	.094	.060	.035	.055	.035	.021	.018	.012	.007	
9.0	.151	.093	.053	.130	.081	.047	.090	.057	.033	.053	.033	.020	.017	.011	.007	
10.0	.146	.089	.051	.126	.077	.044	.087	.054	.031	.051	.032	.019	.016	.011	.006	

C Range: 0 - 360DEG
C Interval: 30.0DEG
Test Speed: HIGH
Temperature:25.3℃
Operators:
Test Date:2025-03-15

γ Range: 0 - 180DEG
γ Interval: 1.0DEG
Test System:EVERFINE GO-2000B_V1 SYSTEM V2.00.488
Humidity:65.0%
Test Distance:6.360m [K=1.0000]
Remarks:

UGR(Unified Glare Rating) Table

Test:U:24.00V I:0.2856A P:6.854W PF:1.000 Freq:0Hz Lamp Flux:279.882x1 lm											
NAME: SF10-24V-5050-84-SPI-RGBW(4000K)-G						TYPE:		WEIGHT:			
SPEC.:						DIM.: Length=1m		SERIAL No.:			
MFR.: OLympia lighting						SUR.:		Shielding Angle:			
ceiling/cavity	0.7	0.7	0.5	0.5	0.3	0.7	0.7	0.5	0.5	0.3	
walls	0.5	0.3	0.5	0.3	0.3	0.5	0.3	0.5	0.3	0.3	
working plane	0.2	0.2	0.2	0.2	0.2	0.2	0.2	0.2	0.2	0.2	
Room dimensions		Viewed crosswise					Viewed endwise				
x = 2H y = 2H	22.7	24.2	23.0	24.5	24.7	22.6	24.1	22.9	24.4	24.7	
	3H	24.4	25.8	24.8	26.1	26.4	24.3	25.7	24.7	26.0	26.3
	4H	25.2	26.5	25.5	26.8	27.1	25.0	26.4	25.4	26.7	27.0
	6H	25.8	27.1	26.2	27.4	27.8	25.6	26.9	26.0	27.2	27.6
	8H	26.1	27.3	26.5	27.6	28.0	25.9	27.1	26.3	27.4	27.8
	12H	26.3	27.4	26.7	27.8	28.2	26.1	27.2	26.5	27.6	27.9
4H	2H	23.3	24.6	23.7	25.0	25.3	23.3	24.6	23.7	24.9	25.2
	3H	25.2	26.4	25.7	26.8	27.1	25.2	26.3	25.6	26.7	27.1
	4H	26.2	27.2	26.6	27.6	28.0	26.0	27.1	26.5	27.5	27.9
	6H	27.0	27.9	27.4	28.3	28.8	26.8	27.7	27.2	28.1	28.6
	8H	27.3	28.2	27.8	28.6	29.1	27.1	28.0	27.6	28.4	28.9
	12H	27.6	28.4	28.1	28.8	29.3	27.3	28.1	27.8	28.6	29.1
8H	4H	26.5	27.4	27.0	27.8	28.3	26.4	27.3	26.9	27.7	28.2
	6H	27.5	28.2	28.0	28.7	29.2	27.3	28.1	27.8	28.5	29.0
	8H	27.9	28.6	28.5	29.1	29.6	27.8	28.4	28.3	28.9	29.4
	12H	28.3	28.9	28.9	29.4	30.0	28.1	28.7	28.6	29.2	29.7
12H	4H	26.5	27.3	27.0	27.8	28.3	26.4	27.2	26.9	27.7	28.2
	6H	27.6	28.2	28.1	28.7	29.2	27.4	28.1	28.0	28.6	29.1
	8H	28.1	28.7	28.6	29.2	29.7	27.9	28.5	28.4	29.0	29.5
Variations with the observer position at spacings(CIE Pub.117):											
S = 1.0H	+ 0.1 / - 0.2					+ 0.1 / - 0.2					
1.5H	+ 0.2 / - 0.3					+ 0.2 / - 0.3					
2.0H	+ 0.1 / - 0.3					+ 0.1 / - 0.3					

CIE Pub.117, 279.9 lm Total Lamp Luminous Flux Correct (8log(F/F0) = -4.4)
Area: 0.0135 m2

C Range: 0 - 360DEG
C Interval: 30.0DEG
Test Speed: HIGH
Temperature:25.3℃
Operators:
Test Date:2025-03-15

γ Range: 0 - 180DEG
γ Interval: 1.0DEG
Test System:EVERFINE GO-2000B_V1 SYSTEM V2.00.488
Humidity:65.0%
Test Distance:6.360m [K=1.0000]
Remarks:

UTILIZATION FACTORS TABLE

Test:U:24.00V I:0.2856A P:6.854W PF:1.000 Freq:0Hz Lamp Flux:279.882x1 lm		
NAME: SF10-24V-5050-84-SPI-RGBW(4000K)-G	TYPE:	WEIGHT:
SPEC.:	DIM.: Length=1m	SERIAL No.:
MFR.: OLympia lighting	SUR.:	Shielding Angle:

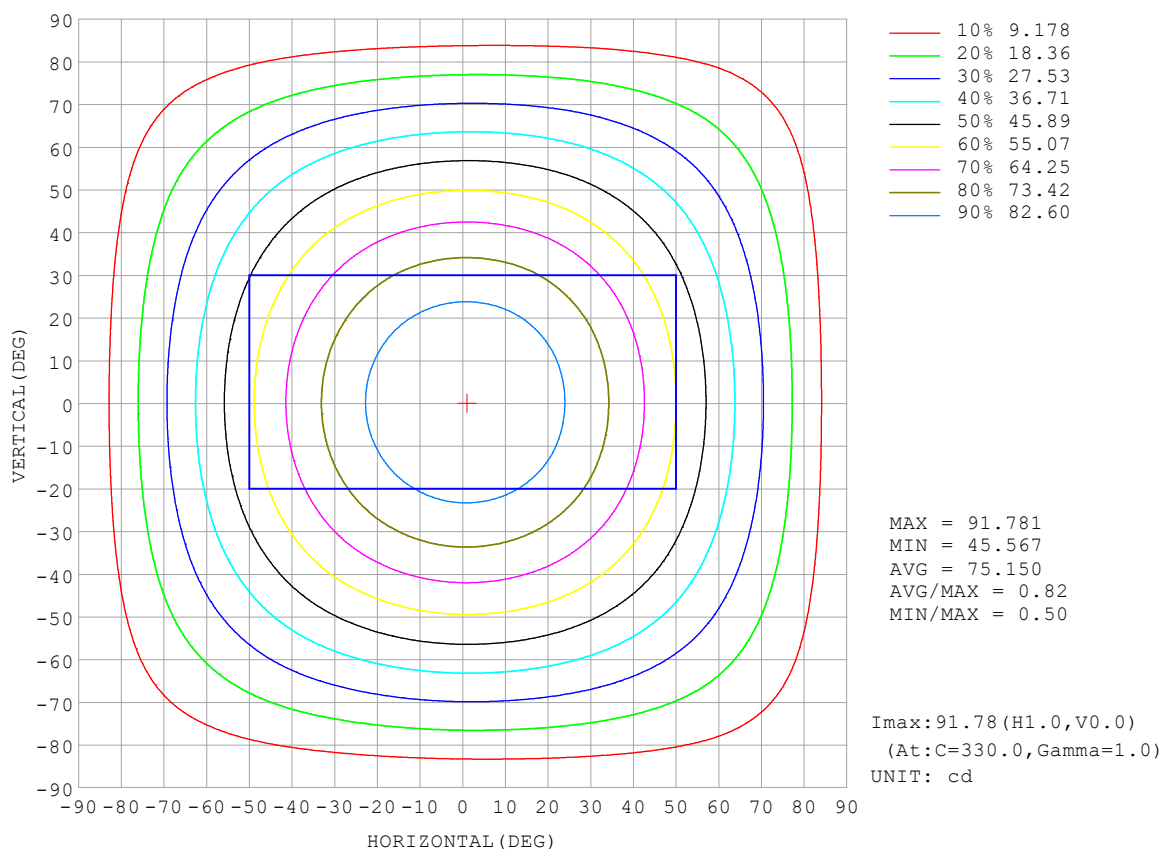
REFLECTANCE										
Ceiling	0.8	0.8	0.8	0.7	0.7	0.7	0.5	0.5	0.5	0
Walls	0.7	0.5	0.3	0.7	0.5	0.3	0.7	0.5	0.3	0
Working plane	0.2	0.2	0.2	0.2	0.2	0.2	0.2	0.2	0.2	0
ROOM INDEX	UTILIZATION FACTORS (PERCENT) $k(RI) \times RCR = 5$									
$k = 0.60$	56	44	37	55	44	37	53	43	37	30
0.80	66	54	46	64	53	46	62	52	45	38
1.00	74	62	55	72	62	55	70	63	54	46
1.25	81	70	63	79	69	62	76	67	61	53
1.50	86	76	68	84	74	68	81	72	66	58
2.00	93	84	77	91	82	76	87	80	74	66
2.50	97	89	82	95	87	81	90	84	79	70
3.00	100	93	87	98	91	86	93	88	83	74
4.00	104	98	93	102	96	92	97	92	89	79
5.00	107	102	97	104	100	96	99	95	92	82
ROOM INDEX	UF (total)									Direct
According to DIN EN 13032-2 2004			Suspended					SHRNOM = 1.25		

C Range: 0 - 360DEG
 C Interval: 30.0DEG
 Test Speed: HIGH
 Temperature: 25.3°C
 Operators:
 Test Date: 2025-03-15

γ Range: 0 - 180DEG
 γ Interval: 1.0DEG
 Test System: EVERFINE GO-2000B_V1 SYSTEM V2.00.488
 Humidity: 65.0%
 Test Distance: 6.360m [K=1.0000]
 Remarks:

ISOCANDELA DIAGRAM

Test:U:24.00V I:0.2856A P:6.854W PF:1.000 Freq:0Hz Lamp Flux:279.882x1 lm		
NAME: SF10-24V-5050-84-SPI-RGBW(4000K)-G	TYPE:	WEIGHT:
SPEC.:	DIM.: Length=1m	SERIAL No.:
MFR.: OLympia lighting	SUR.:	Shielding Angle:

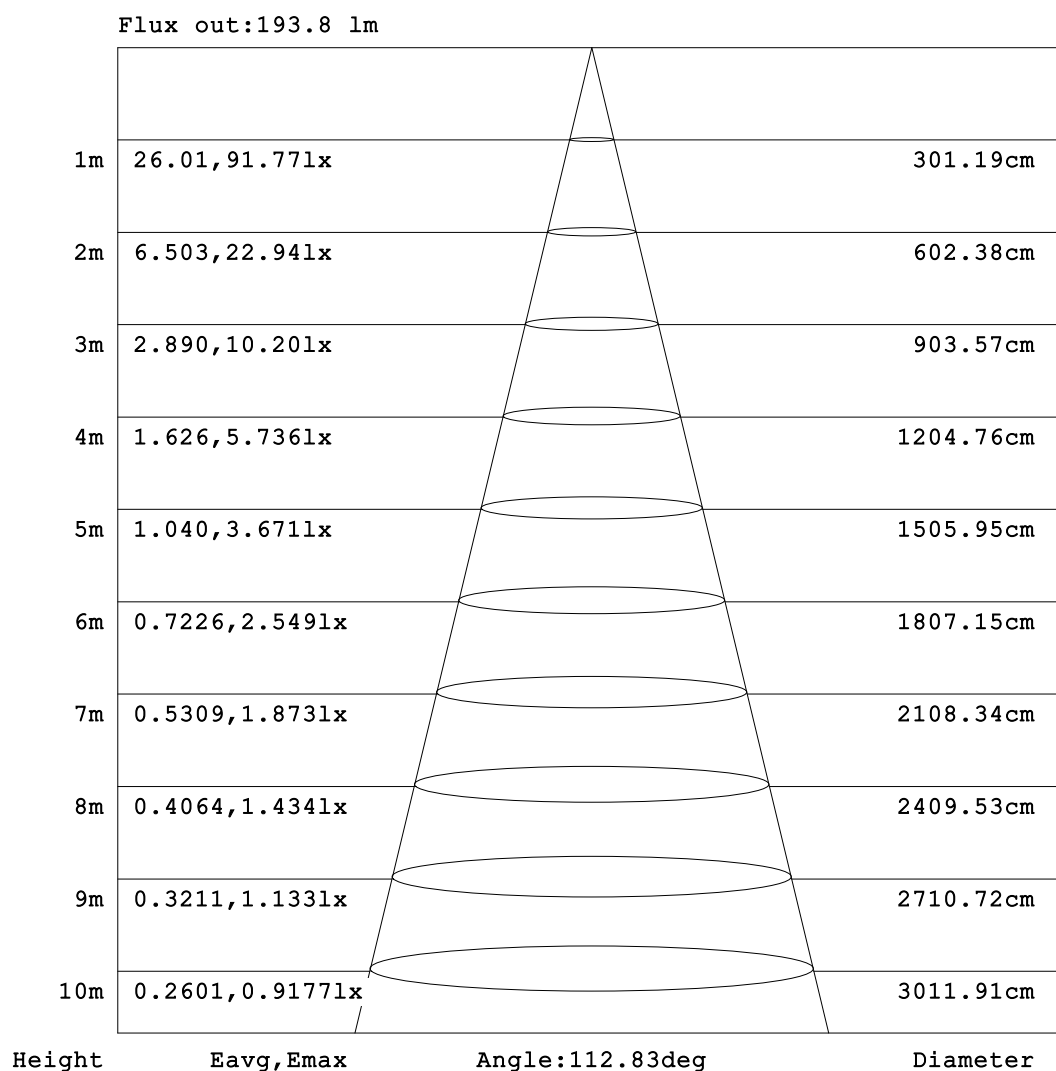


C Range: 0 - 360DEG
C Interval: 30.0DEG
Test Speed: HIGH
Temperature: 25.3°C
Operators:
Test Date: 2025-03-15

γ Range: 0 - 180DEG
γ Interval: 1.0DEG
Test System: EVERFINE GO-2000B_V1 SYSTEM V2.00.488
Humidity: 65.0%
Test Distance: 6.360m [K=1.0000]
Remarks:

AAI Figure

Test:U:24.00V I:0.2856A P:6.854W PF:1.000 Freq:0Hz Lamp Flux:279.882x1 lm		
NAME: SF10-24V-5050-84-SPI-RGBW(4000K)-G	TYPE:	WEIGHT:
SPEC.:	DIM.: Length=1m	SERIAL No.:
MFR.: OLympia lighting	SUR.:	Shielding Angle:



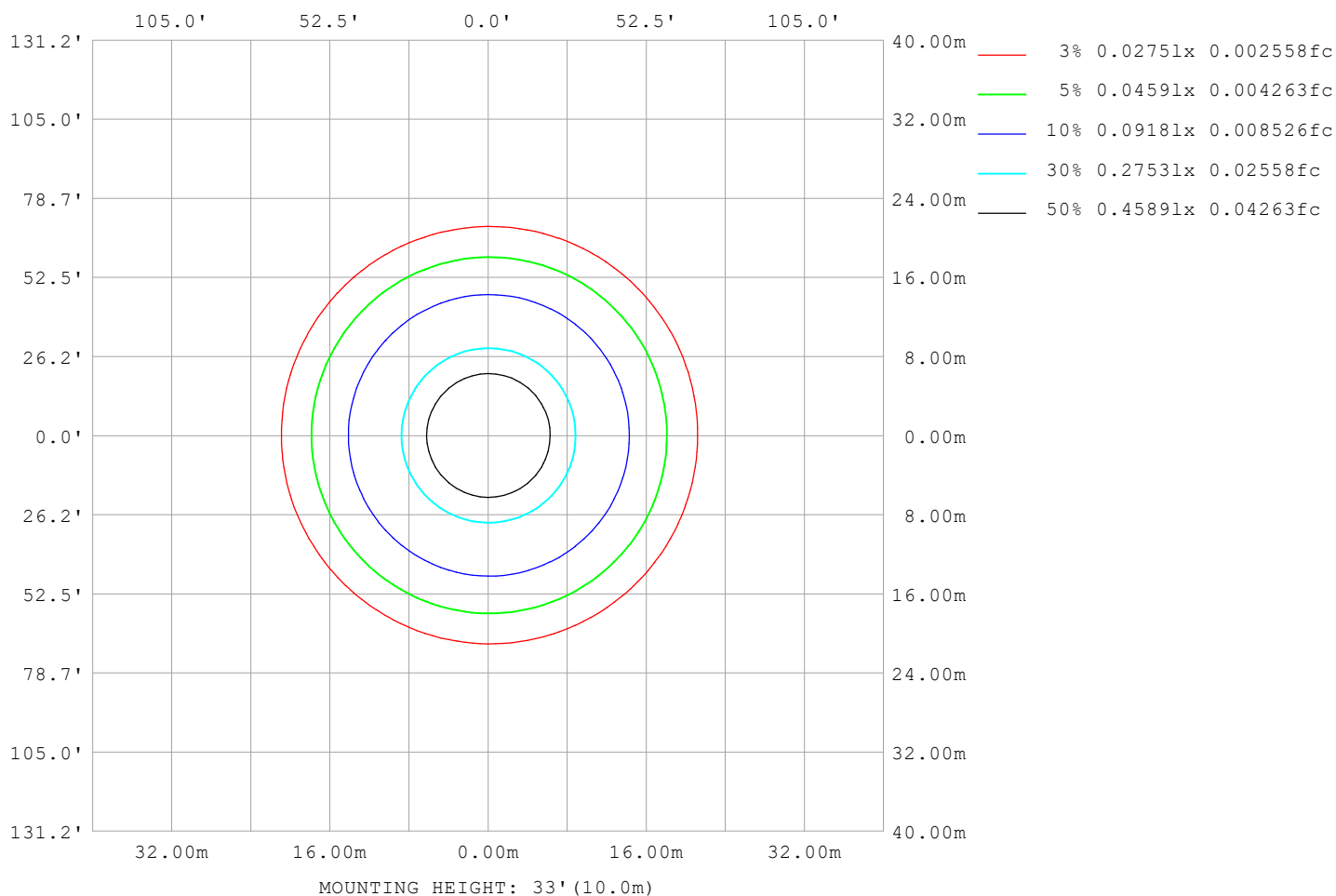
Note:The Curves indicate the illuminated area and the average illumination when the luminaire is at different distance.

C Range: 0 - 360DEG
C Interval: 30.0DEG
Test Speed: HIGH
Temperature:25.3℃
Operators:
Test Date:2025-03-15

γ Range: 0 - 180DEG
γ Interval: 1.0DEG
Test System:EVERFINE GO-2000B_V1 SYSTEM V2.00.488
Humidity:65.0%
Test Distance:6.360m [K=1.0000]
Remarks:

ISOLUX DIAGRAM

Test:U:24.00V I:0.2856A P:6.854W PF:1.000 Freq:0Hz Lamp Flux:279.882x1 lm		
NAME: SF10-24V-5050-84-SPI-RGBW(4000K)-G	TYPE:	WEIGHT:
SPEC.:	DIM.: Length=1m	SERIAL No.:
MFR.: OLympia lighting	SUR.:	Shielding Angle:



C Range: 0 - 360DEG
C Interval: 30.0DEG
Test Speed: HIGH
Temperature:25.3℃
Operators:
Test Date:2025-03-15

γ Range: 0 - 180DEG
γ Interval: 1.0DEG
Test System:EVERFINE GO-2000B_V1 SYSTEM V2.00.488
Humidity:65.0%
Test Distance:6.360m [K=1.0000]
Remarks:

LED Avg.L Report

Test:U:24.00V I:0.2856A P:6.854W PF:1.000 Freq:0Hz Lamp Flux:279.882x1 lm		
NAME: SF10-24V-5050-84-SPI-RGBW(4000K)-G	TYPE:	WEIGHT:
SPEC.:	DIM.: Length=1m	SERIAL No.:
MFR.: OLympia lighting	SUR.:	Shielding Angle:

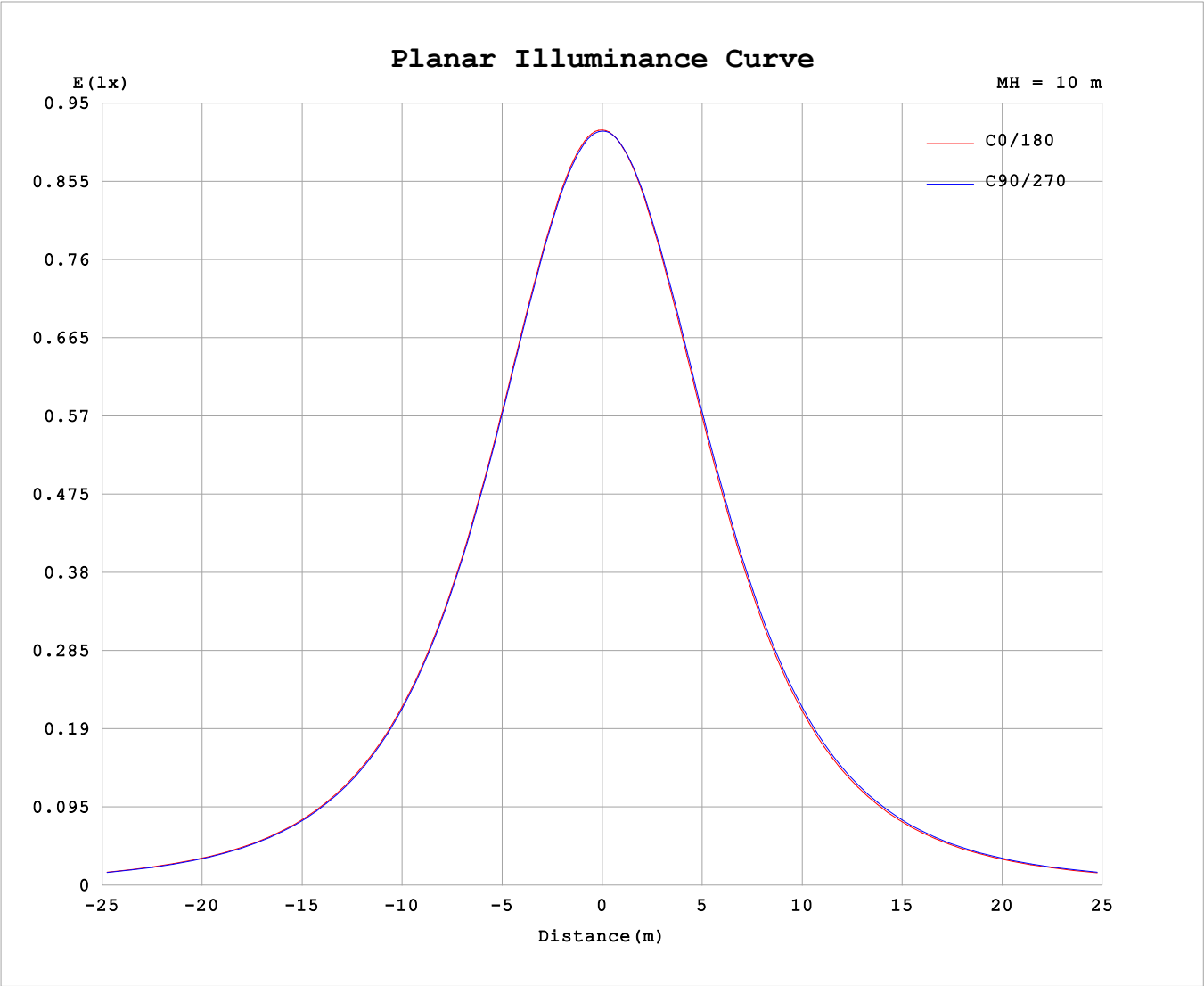
AvgL	cd/m2
L_0~180 (65) av	5994
L_0~180 (75) av	5877
L_0~180 (85) av	6192
L_90~270 (65) av	6050
L_90~270 (75) av	5949
L_90~270 (85) av	6110
L_45 (65) av	6028
L_45 (75) av	5920
L_45 (85) av	6128

Standard: GB/T 29293-2012

C Range: 0 - 360DEG
C Interval: 30.0DEG
Test Speed: HIGH
Temperature:25.3℃
Operators:
Test Date:2025-03-15

γ Range: 0 - 180DEG
γ Interval: 1.0DEG
Test System:EVERFINE GO-2000B_V1 SYSTEM V2.00.488
Humidity:65.0%
Test Distance:6.360m [K=1.0000]
Remarks:

Planar Illuminance Curve



C Range: 0 - 360DEG	γ Range: 0 - 180DEG
C Interval: 30.0DEG	γ Interval: 1.0DEG
Test Speed: HIGH	Test System:EVERFINE GO-2000B_V1 SYSTEM V2.00.488
Temperature:25.3℃	Humidity:65.0%
Operators:	Test Distance:6.360m [K=1.0000]
Test Date:2025-03-15	Remarks:

LUMINOUS DISTRIBUTION INTENSITY DATA

Test:U:24.00V I:0.2856A P:6.854W PF:1.000 Freq:0Hz Lamp Flux:279.882x1 lm											
NAME: SF10-24V-5050-84-SPI-RGBW(4000K)-G						TYPE:			WEIGHT:		
SPEC.:						DIM.: Length=1m			SERIAL No.:		
MFR.: OLYMPIA lighting						SUR.:			Shielding Angle:		

Table--1

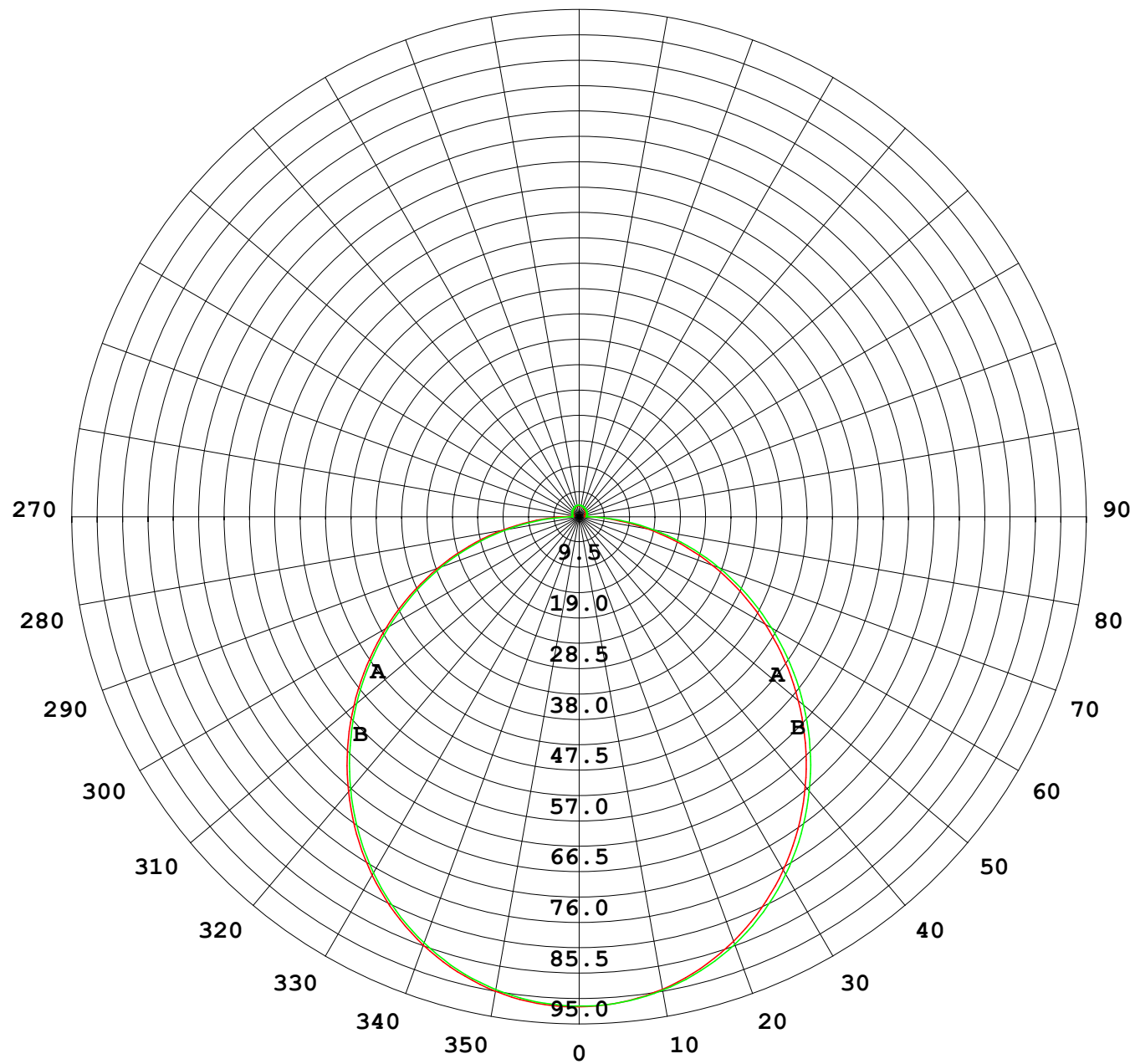
UNIT: cd

C (DEG) γ (DEG)	0	30	60	90	120	150	180	210	240	270	300	330							
0	91.7	91.7	91.7	91.7	91.7	91.7	91.7	91.7	91.7	91.7	91.7	91.7							
5	91.4	91.4	91.3	91.2	91.2	91.1	91.1	91.1	91.2	91.3	91.4	91.4							
10	90.1	90.2	90.1	90.0	89.8	89.7	89.8	89.8	90.0	90.1	90.2	90.3							
15	88.1	88.2	88.0	87.9	87.6	87.5	87.5	87.6	87.9	88.1	88.3	88.3							
20	85.3	85.3	85.2	85.0	84.7	84.5	84.5	84.6	85.0	85.3	85.5	85.5							
25	81.7	81.8	81.6	81.3	81.0	80.8	80.8	80.9	81.4	81.7	82.0	82.0							
30	77.4	77.5	77.3	77.1	76.6	76.4	76.4	76.5	77.0	77.4	77.8	77.7							
35	72.6	72.6	72.4	72.1	71.6	71.4	71.4	71.6	72.1	72.5	72.9	72.9							
40	67.1	67.2	67.0	66.6	66.1	65.8	65.8	66.0	66.6	67.1	67.5	67.5							
45	61.3	61.3	61.1	60.7	60.1	59.8	59.8	60.1	60.7	61.2	61.6	61.6							
50	55.0	55.1	54.8	54.4	53.8	53.5	53.5	53.8	54.4	54.9	55.4	55.4							
55	48.5	48.5	48.3	47.8	47.3	46.9	46.9	47.2	47.8	48.3	48.8	48.9							
60	41.8	41.8	41.5	41.1	40.5	40.1	40.2	40.4	41.1	41.6	42.1	42.2							
65	35.0	35.0	34.7	34.3	33.6	33.3	33.4	33.6	34.2	34.8	35.3	35.3							
70	28.2	28.2	27.8	27.4	26.7	26.4	26.5	26.7	27.3	27.9	28.4	28.5							
75	21.4	21.3	20.9	20.5	19.9	19.6	19.7	19.9	20.5	21.0	21.6	21.7							
80	14.6	14.6	14.1	13.7	13.1	12.8	13.0	13.1	13.7	14.2	14.8	14.9							
85	8.01	7.89	7.36	6.91	6.34	6.33	6.56	6.56	6.94	7.47	8.05	8.23							
90	3.23	2.94	2.05	1.31	1.74	2.27	2.46	2.30	1.94	1.43	2.41	3.13							
95	1.19	1.19	1.26	1.35	1.30	1.22	1.02	1.13	1.31	1.36	1.30	1.16							
100	1.17	1.23	1.29	1.38	1.35	1.29	1.08	1.17	1.36	1.43	1.35	1.15							
105	1.24	1.28	1.34	1.41	1.41	1.36	1.15	1.24	1.43	1.50	1.42	1.22							
110	1.32	1.32	1.37	1.45	1.47	1.43	1.22	1.30	1.50	1.56	1.48	1.28							
115	1.39	1.38	1.41	1.51	1.53	1.50	1.30	1.37	1.56	1.61	1.53	1.34							
120	1.47	1.45	1.47	1.58	1.59	1.57	1.37	1.44	1.61	1.64	1.58	1.41							
125	1.55	1.54	1.55	1.65	1.64	1.64	1.44	1.51	1.66	1.68	1.63	1.47							
130	1.62	1.62	1.65	1.72	1.70	1.71	1.53	1.58	1.72	1.73	1.68	1.55							
135	1.69	1.67	1.72	1.77	1.76	1.77	1.60	1.65	1.78	1.78	1.73	1.60							
140	1.76	1.76	1.78	1.83	1.83	1.84	1.68	1.73	1.83	1.83	1.79	1.67							
145	1.82	1.83	1.85	1.91	1.89	1.91	1.76	1.79	1.90	1.88	1.85	1.74							
150	1.89	1.90	1.92	1.98	1.96	1.97	1.84	1.87	1.96	1.95	1.91	1.81							
155	1.96	1.96	1.99	2.05	2.02	2.04	1.92	1.94	2.02	2.00	1.98	1.88							
160	2.03	2.03	2.05	2.11	2.08	2.11	2.00	2.01	2.08	2.05	2.04	1.95							
165	2.09	2.08	2.11	2.17	2.13	2.16	2.07	2.07	2.12	2.11	2.10	2.02							
170	2.11	2.16	2.16	2.20	2.18	2.19	2.10	2.12	2.17	2.15	2.15	2.11							
175	2.15	2.20	2.19	2.23	2.21	2.22	2.15	2.17	2.21	2.19	2.20	2.16							
180	2.16	2.20	2.22	2.23	2.22	2.22	2.16	2.20	2.22	2.23	2.23	2.21							

C Range: 0 - 360DEG
C Interval: 30.0DEG
Test Speed: HIGH
Temperature:25.3℃
Operators:
Test Date:2025-03-15

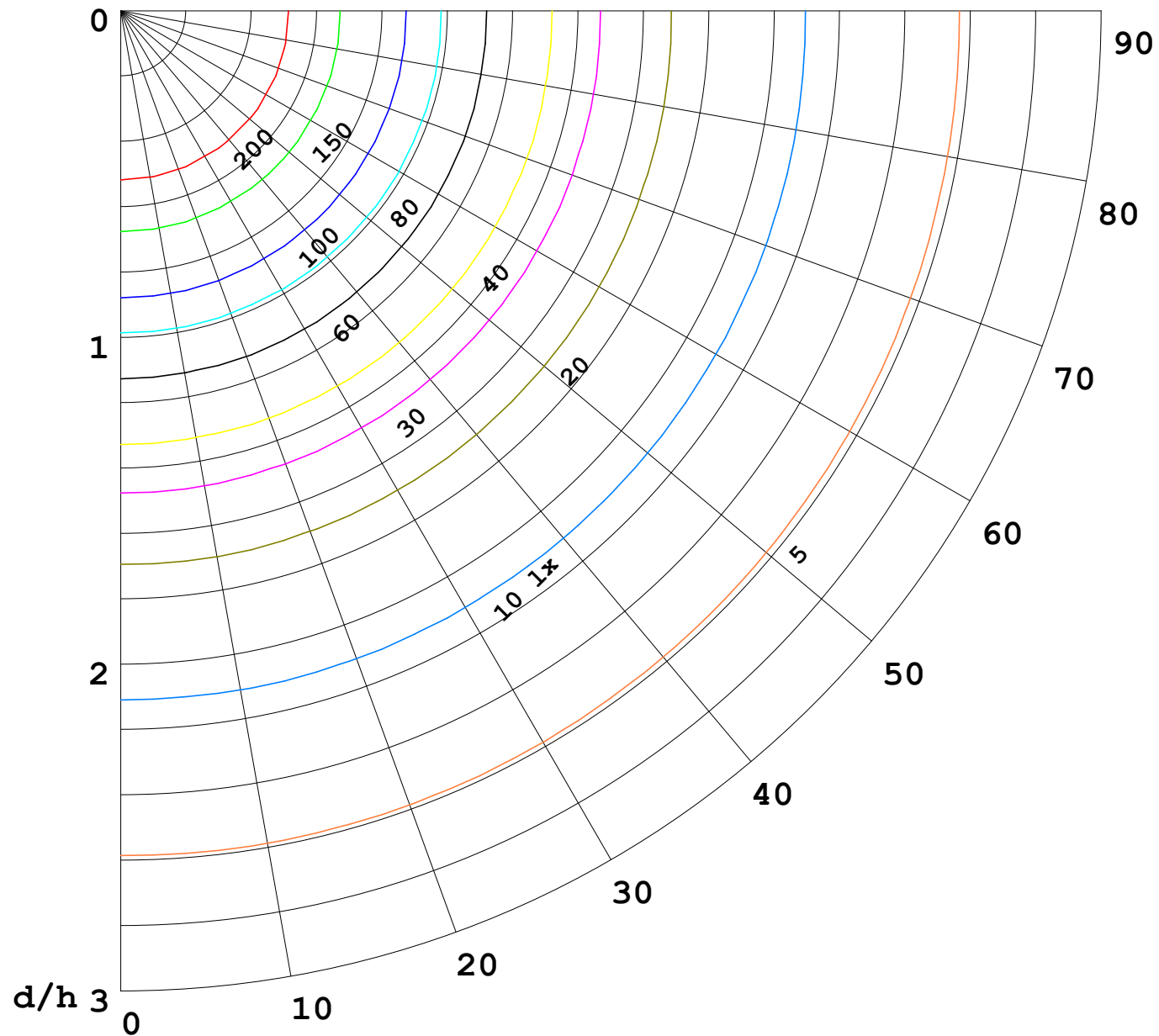
γ Range: 0 - 180DEG
γ Interval: 1.0DEG
Test System:EVERFINE GO-2000B_V1 SYSTEM V2.00.488
Humidity:65.0%
Test Distance:6.360m [K=1.0000]
Remarks:

I (cd)



1000 lm

$\kappa = 1$



F = 1000 lm
 K = 0.7
 Hcc = 0.8 m
 Hfc = 0.0 m
 Eave = 100 lx

	Pcc	Pw	Pfc
—————	70	50	30
—————	50	30	20

