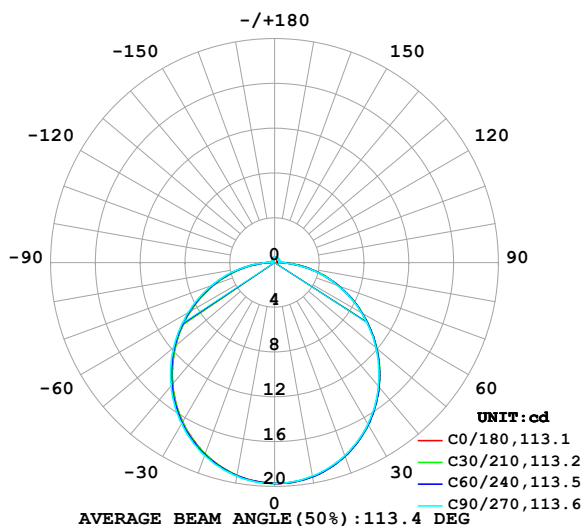


LUMINAIRE PHOTOMETRIC TEST REPORT

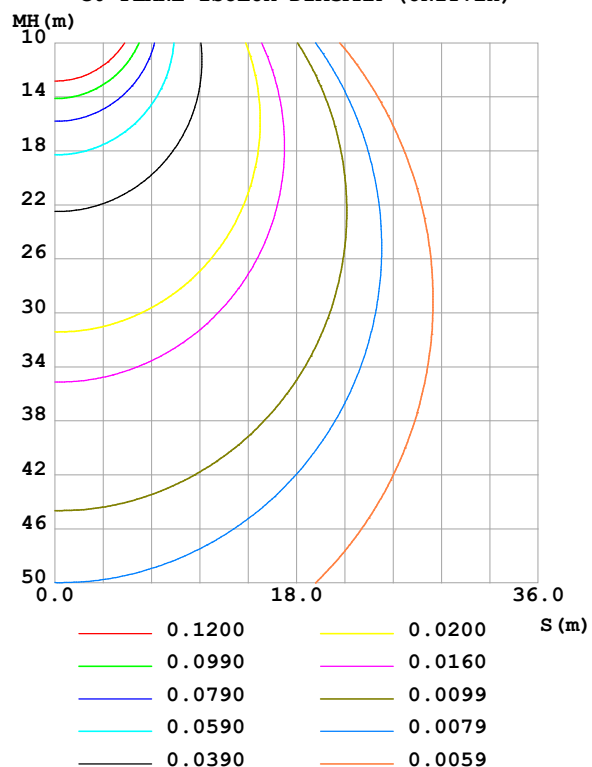
Test:U:24.00V I:0.4258A P:10.22W PF:1.000 Freq:0Hz Lamp Flux:60.4311x1 lm		
NAME: SF10-24V-5050-84-SPI-RGBW(3000K)-B	TYPE:	WEIGHT:
SPEC.:	DIM.: Length=1m	SERIAL No.:
MFR.: OLympia lighting	SUR.:	Shielding Angle:

DATA OF LAMP		PHOTOMETRIC DATA				Eff: 5.92 lm/W
MODEL	2835	Imax (cd)	19.73	S/MH(C0/180)	1.24	
NOMINAL POWER(W)		LOR(%)	100.0	S/MH(C90/270)	1.25	
RATED VOLTAGE(V)	24	TOTAL FLUX(lm)	60.449	η UP,DN(C0-180)	2.0,48.3	
NOMINAL FLUX(lm)	60.4311	CIE CLASS	DIRECT	η UP,DN(C180-360)	1.6,48.1	
LAMPS INSIDE	1	η up (%)	3.6	CIBSE SHR NOM	1.25	
TEST VOLTAGE(V)		η down (%)	96.4	CIBSE SHR MAX	1.35	

LUMINOUS INTENSITY DISTRIBUTION DIAGRAM



C0 PLANE ISOLUX DIAGRAM (UNIT:lx)



C Range: 0 - 360DEG
C Interval: 30.0DEG
Test Speed: HIGH
Temperature:25.3℃
Operators:
Test Date:2025-03-14

γ Range: 0 - 180DEG
 γ Interval: 1.0DEG
Test System:EVERFINE GO-2000B_V1 SYSTEM V2.00.488
Humidity:65.0%
Test Distance:6.360m [K=1.0000]
Remarks:

ZONAL FLUX DIAGRAM

ZONAL FLUX DIAGRAM:

γ	C0	C45	C90	C135	C180	C225	C270	C315	γ	Φ zone	Φ total	%lum, lamp
10	19.42	19.42	19.37	19.33	19.30	19.32	19.38	19.41	0- 10	1.866	1.866	3.09,3.09
20	18.38	18.40	18.35	18.24	18.18	18.22	18.32	18.39	10- 20	5.340	7.206	11.9,11.9
30	16.71	16.74	16.67	16.52	16.43	16.49	16.63	16.71	20- 30	8.080	15.29	25.3,25.3
40	14.49	14.52	14.44	14.26	14.17	14.24	14.39	14.50	30- 40	9.731	25.02	41.4,41.4
50	11.88	11.90	11.82	11.62	11.54	11.60	11.76	11.90	40- 50	10.11	35.13	58.1,58.1
60	9.038	9.054	8.971	8.755	8.694	8.740	8.909	9.055	50- 60	9.253	44.38	73.4,73.4
70	6.087	6.092	6.020	5.797	5.746	5.793	5.973	6.114	60- 70	7.355	51.74	85.6,85.6
80	3.159	3.139	3.067	2.850	2.829	2.883	3.063	3.186	70- 80	4.730	56.47	93.4,93.4
90	0.7546	0.6093	0.4395	0.4807	0.5527	0.4561	0.3133	0.5988	80- 90	1.791	58.26	96.4,96.4
100	0.2827	0.3239	0.4007	0.3215	0.2395	0.2440	0.2831	0.2493	90-100	0.3651	58.62	97,97
110	0.2740	0.3406	0.4153	0.3417	0.2683	0.2621	0.3031	0.2636	100-110	0.3140	58.94	97.5,97.5
120	0.3086	0.3623	0.4296	0.3665	0.3001	0.2916	0.3161	0.2843	110-120	0.3160	59.25	98,98
130	0.3403	0.3857	0.4341	0.3882	0.3318	0.3219	0.3192	0.3080	120-130	0.3062	59.56	98.5,98.6
140	0.3663	0.4070	0.4447	0.4084	0.3653	0.3551	0.3349	0.3368	130-140	0.2820	59.84	99,99
150	0.3923	0.4329	0.4649	0.4312	0.4038	0.3911	0.3695	0.3737	140-150	0.2458	60.09	99.4,99.4
160	0.4240	0.4497	0.4659	0.4453	0.4356	0.4249	0.4099	0.4090	150-160	0.1938	60.28	99.7,99.7
170	0.4500	0.4581	0.4670	0.4568	0.4567	0.4521	0.4388	0.4444	160-170	0.1254	60.40	99.9,100
180	0.4615	0.4633	0.4677	0.4618	0.4587	0.4618	0.4648	0.4603	170-180	0.0436	60.45	100,100
DEG	LUMINOUS INTENSITY:cd									UNIT:lm		

Conical surface Flux(90deg): 30.105 lm

%lum = 49.8%

%lamp = 49.8%

Conical surface Flux(130deg): 48.349 lm

%lum = 80.0%

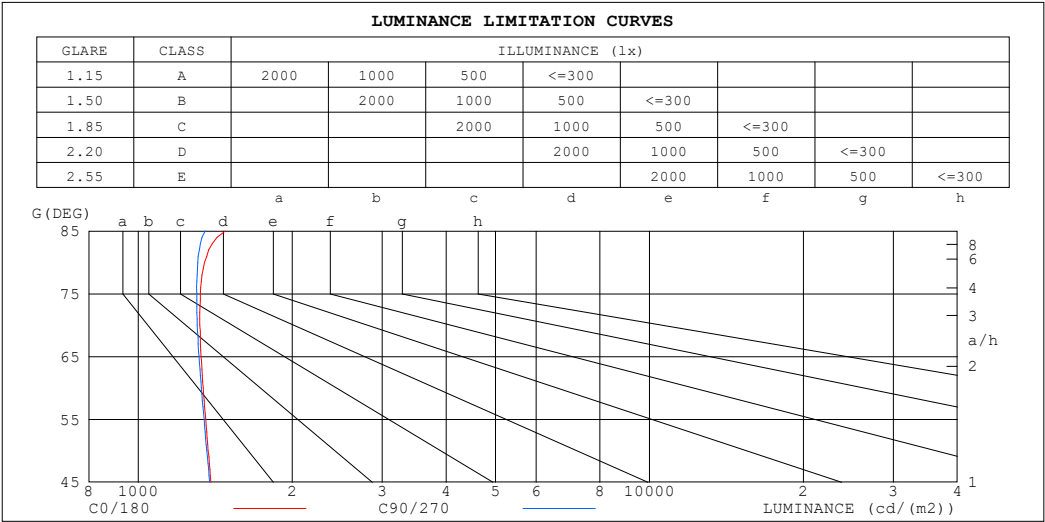
%lamp = 80.0%

C Range: 0 - 360DEG
 C Interval: 30.0DEG
 Test Speed: HIGH
 Temperature:25.3℃
 Operators:
 Test Date:2025-03-14

γ Range: 0 - 180DEG
 γ Interval: 1.0DEG
 Test System:EVERFINE GO-2000B_V1 SYSTEM V2.00.488
 Humidity:65.0%
 Test Distance:6.360m [K=1.0000]
 Remarks:

LUMINANCE LIMITATION CURVES

Test:U:24.00V I:0.4258A P:10.22W PF:1.000 Freq:0Hz Lamp Flux:60.431lx1 lm		
NAME: SF10-24V-5050-84-SPI-RGBW(3000K)-B	TYPE:	WEIGHT:
SPEC.:	DIM.: Length=1m	SERIAL No.:
MFR.: OLympia lighting	SUR.:	Shielding Angle:



LUMINANCE cd/(m2)		
G (DEG)	C0/180	C90/270
85	1480	1352
80	1348	1308
75	1323	1301
70	1319	1303
65	1327	1314
60	1340	1329
55	1354	1345
50	1370	1362
45	1386	1379

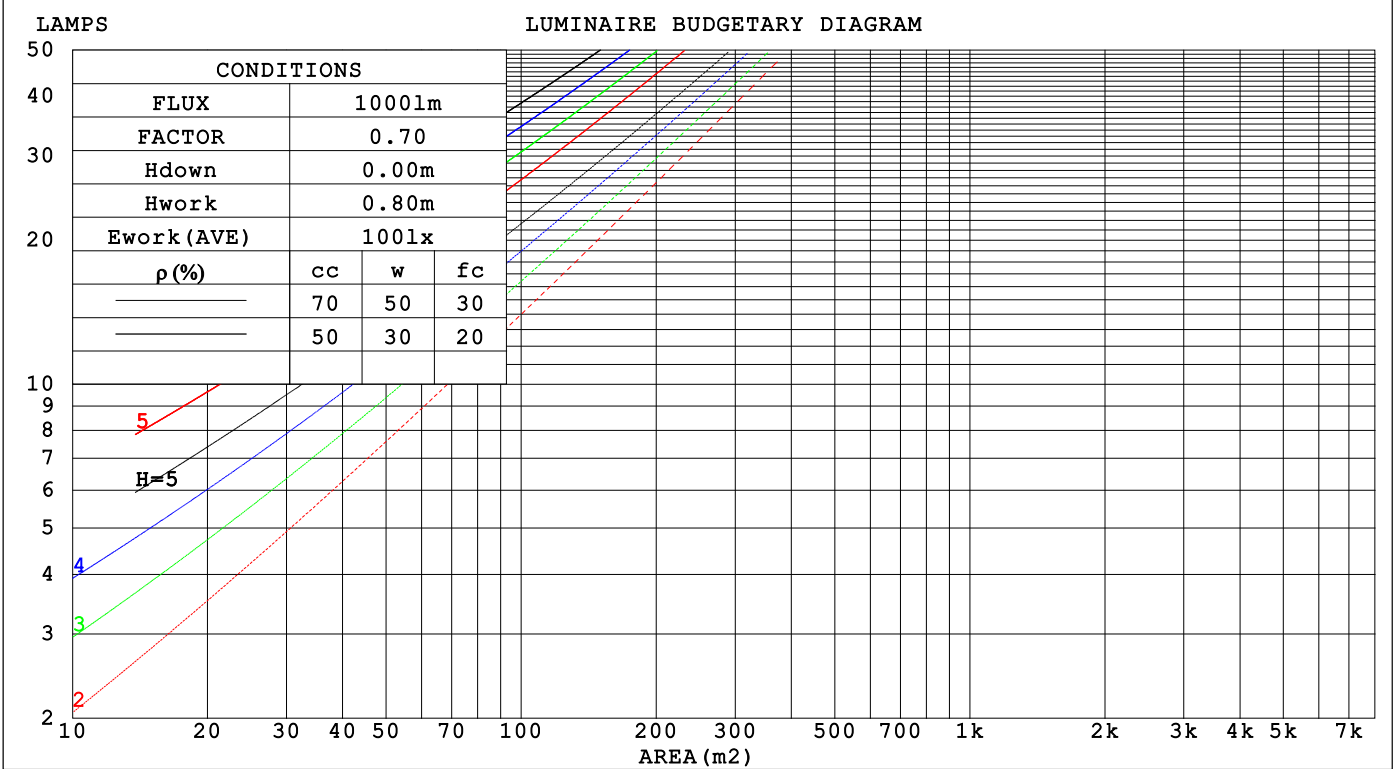
C Range: 0 - 360DEG
C Interval: 30.0DEG
Test Speed: HIGH
Temperature:25.3℃
Operators:
Test Date:2025-03-14

γ Range: 0 - 180DEG
γ Interval: 1.0DEG
Test System:EVERFINE GO-2000B_V1 SYSTEM V2.00.488
Humidity:65.0%
Test Distance:6.360m [K=1.0000]
Remarks:

CU AND LUMINAIRE BUDGETARY ESTIMATE DIAGRAM

Test:U:24.00V I:0.4258A P:10.22W PF:1.000 Freq:0Hz		
Lamp Flux:60.431lx1 lm		
NAME: SF10-24V-5050-84-SPI-RGBW(3000K)-B	TYPE:	WEIGHT:
SPEC.:	DIM.: Length=1m	SERIAL No.:
MFR.: OLYMPIA lighting	SUR.:	Shielding Angle:

pcc	80%			70%			50%			30%			10%			0
pw	50%	30%	10%	50%	30%	10%	50%	30%	10%	50%	30%	10%	50%	30%	10%	0
pfc	20%			20%			20%			20%			20%			0
RCR	RCR:Room Cavity Ratio															

C Range: 0 - 360DEG
C Interval: 30.0DEG
Test Speed: HIGH
Temperature:25.3℃
Operators:
Test Date:2025-03-14γ Range: 0 - 180DEG
γ Interval: 1.0DEG
Test System:EVERFINE GO-2000B_V1 SYSTEM V2.00.488
Humidity:65.0%
Test Distance:6.360m [K=1.0000]
Remarks:

WEC AND CCEC

Test:U:24.00V I:0.4258A P:10.22W PF:1.000 Freq:0Hz Lamp Flux:60.4311x1 lm		
NAME: SF10-24V-5050-84-SPI-RGBW(3000K)-B	TYPE:	WEIGHT:
SPEC.:	DIM.: Length=1m	SERIAL No.:
MFR.: OLympia lighting	SUR.:	Shielding Angle:

pcc	80%			70%			50%			30%			10%			0														
pw	50%	30%	10%	50%	30%	10%	50%	30%	10%	50%	30%	10%	50%	30%	10%	0														
pfc	20%			20%			20%			20%			20%			0														
RCR	RCR:Room Cavity Ratio															Wall Exitance Coefficients(WEC)														
0.0																														
1.0	.326	.185	.059	.318	.181	.058	.302	.173	.055	.288	.166	.053	.275	.160	.051															
2.0	.301	.165	.051	.294	.162	.050	.280	.156	.048	.267	.150	.047	.256	.145	.046															
3.0	.276	.147	.044	.269	.144	.043	.257	.139	.042	.246	.135	.041	.236	.130	.040															
4.0	.253	.132	.039	.247	.129	.038	.237	.125	.037	.226	.122	.037	.217	.118	.036															
5.0	.233	.119	.034	.228	.117	.034	.218	.114	.033	.209	.110	.033	.201	.107	.032															
6.0	.216	.108	.031	.211	.107	.031	.202	.104	.030	.194	.101	.030	.186	.098	.029															
7.0	.200	.099	.028	.196	.098	.028	.188	.095	.027	.181	.093	.027	.174	.090	.027															
8.0	.187	.091	.026	.183	.090	.025	.176	.088	.025	.169	.086	.025	.163	.084	.024															
9.0	.175	.085	.024	.171	.084	.023	.165	.082	.023	.159	.080	.023	.153	.078	.022															
10.0	.164	.079	.022	.161	.078	.022	.155	.076	.021	.150	.074	.021	.144	.073	.021															

pcc	80%			70%			50%			30%			10%			0
pw	50%	30%	10%	50%	30%	10%	50%	30%	10%	50%	30%	10%	50%	30%	10%	0
pfc	20%			20%			20%			20%			20%			0
RCR	RCR:Room Cavity Ratio						Ceiling Cavity Exitance Coefficients(CCEC)									
0.0	.218	.218	.218	.186	.186	.186	.127	.127	.127	.073	.073	.073	.023	.023	.023	
1.0	.209	.184	.161	.179	.158	.139	.123	.109	.096	.071	.063	.056	.023	.020	.018	
2.0	.202	.160	.125	.173	.138	.108	.118	.095	.075	.068	.055	.044	.022	.018	.014	
3.0	.194	.143	.102	.166	.123	.088	.114	.085	.062	.066	.050	.036	.021	.016	.012	
4.0	.186	.129	.086	.160	.112	.075	.110	.078	.053	.064	.046	.031	.020	.015	.010	
5.0	.179	.119	.075	.153	.103	.065	.106	.072	.046	.061	.042	.027	.020	.014	.009	
6.0	.171	.111	.067	.147	.096	.059	.102	.067	.042	.059	.040	.025	.019	.013	.008	
7.0	.165	.104	.062	.142	.090	.054	.098	.063	.038	.057	.037	.023	.018	.012	.007	
8.0	.158	.098	.057	.136	.085	.050	.094	.060	.035	.055	.035	.021	.018	.012	.007	
9.0	.152	.093	.054	.131	.081	.047	.091	.057	.033	.053	.034	.020	.017	.011	.007	
10.0	.146	.089	.051	.126	.077	.045	.087	.054	.032	.051	.032	.019	.017	.011	.006	

C Range: 0 - 360DEG
C Interval: 30.0DEG
Test Speed: HIGH
Temperature:25.3℃
Operators:
Test Date:2025-03-14

γ Range: 0 - 180DEG
γ Interval: 1.0DEG
Test System:EVERFINE GO-2000B_V1 SYSTEM V2.00.488
Humidity:65.0%
Test Distance:6.360m [K=1.0000]
Remarks:

UGR(Unified Glare Rating) Table

Test:U:24.00V I:0.4258A P:10.22W PF:1.000 Freq:0Hz Lamp Flux:60.431lx1 lm											
NAME: SF10-24V-5050-84-SPI-RGBW(3000K)-B					TYPE:			WEIGHT:			
SPEC.:					DIM.: Length=1m			SERIAL No.:			
MFR.: OLympia lighting					SUR.:			Shielding Angle:			
ceiling/cavity	0.7	0.7	0.5	0.5	0.3	0.7	0.7	0.5	0.5	0.3	
walls	0.5	0.3	0.5	0.3	0.3	0.5	0.3	0.5	0.3	0.3	
working plane	0.2	0.2	0.2	0.2	0.2	0.2	0.2	0.2	0.2	0.2	
Room dimensions		Viewed crosswise				Viewed endwise					
x = 2H y = 2H	2H	22.7	24.2	23.0	24.5	24.7	22.7	24.2	23.0	24.4	24.7
	3H	24.4	25.8	24.8	26.1	26.4	24.4	25.8	24.7	26.1	26.4
	4H	25.2	26.5	25.6	26.8	27.2	25.1	26.4	25.5	26.8	27.1
	6H	25.8	27.1	26.2	27.4	27.8	25.8	27.0	26.1	27.3	27.7
	8H	26.1	27.3	26.5	27.6	28.0	26.0	27.2	26.4	27.5	27.9
	12H	26.3	27.5	26.7	27.8	28.2	26.2	27.3	26.6	27.7	28.1
4H	2H	23.4	24.7	23.7	25.0	25.3	23.3	24.6	23.7	25.0	25.3
	3H	25.3	26.4	25.7	26.8	27.2	25.2	26.4	25.6	26.7	27.1
	4H	26.2	27.2	26.6	27.6	28.0	26.1	27.2	26.6	27.6	28.0
	6H	27.0	27.9	27.4	28.3	28.8	26.9	27.8	27.4	28.3	28.7
	8H	27.3	28.2	27.8	28.6	29.1	27.2	28.1	27.7	28.5	29.0
	12H	27.6	28.4	28.1	28.9	29.3	27.5	28.3	28.0	28.7	29.2
8H	4H	26.5	27.4	27.0	27.8	28.3	26.5	27.3	26.9	27.8	28.2
	6H	27.5	28.2	28.0	28.7	29.2	27.4	28.2	27.9	28.6	29.1
	8H	28.0	28.6	28.5	29.1	29.6	27.9	28.5	28.4	29.0	29.5
	12H	28.4	28.9	28.9	29.4	30.0	28.2	28.8	28.8	29.3	29.9
12H	4H	26.5	27.4	27.0	27.8	28.3	26.5	27.3	27.0	27.8	28.2
	6H	27.6	28.3	28.1	28.7	29.3	27.5	28.2	28.1	28.7	29.2
	8H	28.1	28.7	28.7	29.2	29.7	28.0	28.6	28.6	29.1	29.7
Variations with the observer position at spacings(CIE Pub.117):											
S = 1.0H		+ 0.1 / - 0.2				+ 0.1 / - 0.2					
1.5H		+ 0.2 / - 0.3				+ 0.2 / - 0.3					
2.0H		+ 0.1 / - 0.3				+ 0.1 / - 0.3					

CIE Pub.117, 60.43 lm Total Lamp Luminous Flux Correct (8log(F/F0) = -9.7)
Area: 0.0135 m2

C Range: 0 - 360DEG
C Interval: 30.0DEG
Test Speed: HIGH
Temperature:25.3℃
Operators:
Test Date:2025-03-14

γ Range: 0 - 180DEG
γ Interval: 1.0DEG
Test System:EVERFINE GO-2000B_V1 SYSTEM V2.00.488
Humidity:65.0%
Test Distance:6.360m [K=1.0000]
Remarks:

UTILIZATION FACTORS TABLE

Test:U:24.00V I:0.4258A P:10.22W PF:1.000 Freq:0Hz Lamp Flux:60.4311x1 lm		
NAME: SF10-24V-5050-84-SPI-RGBW(3000K)-B	TYPE:	WEIGHT:
SPEC.:	DIM.: Length=1m	SERIAL No.:
MFR.: OLympia lighting	SUR.:	Shielding Angle:

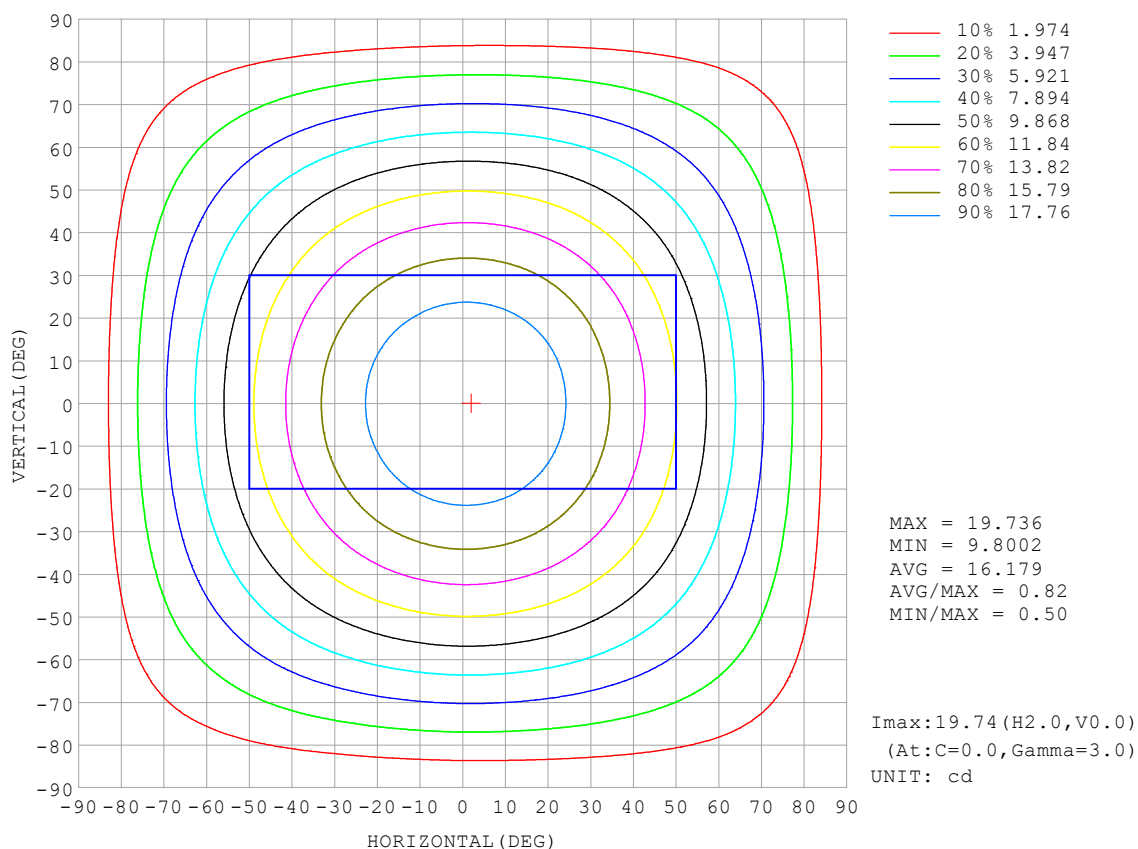
REFLECTANCE										
Ceiling	0.8	0.8	0.8	0.7	0.7	0.7	0.5	0.5	0.5	0
Walls	0.7	0.5	0.3	0.7	0.5	0.3	0.7	0.5	0.3	0
Working plane	0.2	0.2	0.2	0.2	0.2	0.2	0.2	0.2	0.2	0
ROOM INDEX	UTILIZATION FACTORS (PERCENT) $k(RI) \times RCR = 5$									
$k = 0.60$	56	44	37	55	44	37	53	43	36	30
0.80	66	54	46	64	53	46	62	52	45	38
1.00	74	62	55	72	62	54	70	63	54	46
1.25	81	70	62	79	69	62	76	67	61	53
1.50	86	75	68	84	74	68	80	72	66	58
2.00	93	84	77	91	82	76	87	80	74	65
2.50	97	89	82	94	87	81	90	84	79	70
3.00	100	93	87	98	91	86	93	88	83	74
4.00	104	98	93	102	96	92	97	92	89	78
5.00	107	102	97	104	100	96	99	95	92	81
ROOM INDEX	UF (total)									Direct
According to DIN EN 13032-2 2004			Suspended					SHRNOM = 1.25		

C Range: 0 - 360DEG
 C Interval: 30.0DEG
 Test Speed: HIGH
 Temperature: 25.3 °C
 Operators:
 Test Date: 2025-03-14

γ Range: 0 - 180DEG
 γ Interval: 1.0DEG
 Test System: EVERFINE GO-2000B_V1 SYSTEM V2.00.488
 Humidity: 65.0%
 Test Distance: 6.360m [K=1.0000]
 Remarks:

ISOCANDELA DIAGRAM

Test:U:24.00V I:0.4258A P:10.22W PF:1.000 Freq:0Hz Lamp Flux:60.431lx1 lm		
NAME: SF10-24V-5050-84-SPI-RGBW(3000K)-B	TYPE:	WEIGHT:
SPEC.:	DIM.: Length=1m	SERIAL No.:
MFR.: OLympia lighting	SUR.:	Shielding Angle:

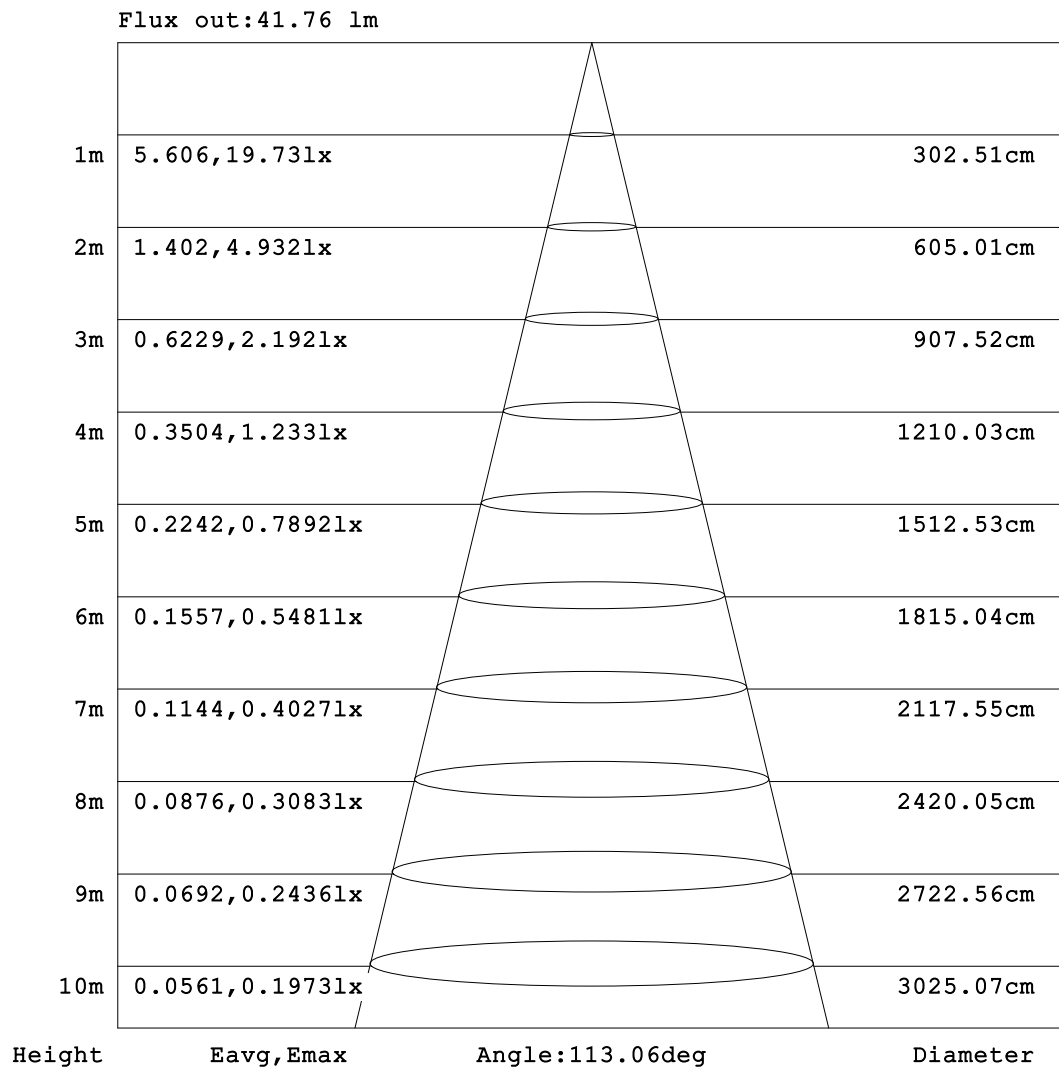


C Range: 0 - 360DEG
C Interval: 30.0DEG
Test Speed: HIGH
Temperature:25.3℃
Operators:
Test Date:2025-03-14

γ Range: 0 - 180DEG
γ Interval: 1.0DEG
Test System:EVERFINE GO-2000B_V1 SYSTEM V2.00.488
Humidity:65.0%
Test Distance:6.360m [K=1.0000]
Remarks:

AAI Figure

Test:U:24.00V I:0.4258A P:10.22W PF:1.000 Freq:0Hz Lamp Flux:60.431lx1 lm		
NAME: SF10-24V-5050-84-SPI-RGBW(3000K)-B	TYPE:	WEIGHT:
SPEC.:	DIM.: Length=1m	SERIAL No.:
MFR.: OLympia lighting	SUR.:	Shielding Angle:



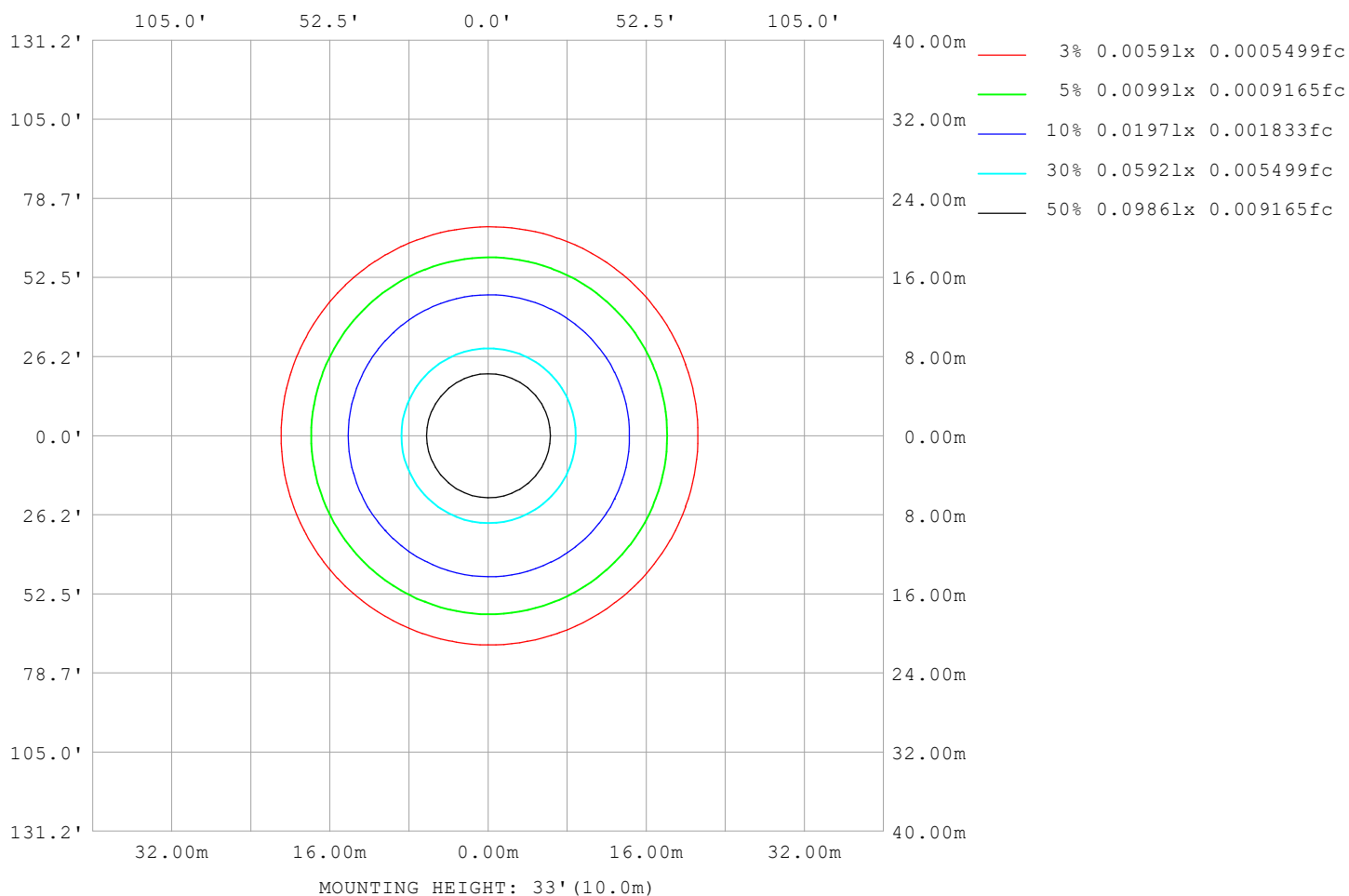
Note:The Curves indicate the illuminated area and the average illumination when the luminaire is at different distance.

C Range: 0 - 360DEG
C Interval: 30.0DEG
Test Speed: HIGH
Temperature:25.3℃
Operators:
Test Date:2025-03-14

γ Range: 0 - 180DEG
γ Interval: 1.0DEG
Test System:EVERFINE GO-2000B_V1 SYSTEM V2.00.488
Humidity:65.0%
Test Distance:6.360m [K=1.0000]
Remarks:

ISOLUX DIAGRAM

Test:U:24.00V I:0.4258A P:10.22W PF:1.000 Freq:0Hz Lamp Flux:60.431lx 1m		
NAME: SF10-24V-5050-84-SPI-RGBW(3000K)-B	TYPE:	WEIGHT:
SPEC.:	DIM.: Length=1m	SERIAL No.:
MFR.: OLympia lighting	SUR.:	Shielding Angle:



C Range: 0 - 360DEG
C Interval: 30.0DEG
Test Speed: HIGH
Temperature: 25.3°C
Operators:
Test Date: 2025-03-14

γ Range: 0 - 180DEG
γ Interval: 1.0DEG
Test System: EVERFINE GO-2000B_V1 SYSTEM V2.00.488
Humidity: 65.0%
Test Distance: 6.360m [K=1.0000]
Remarks:

LED Avg.L Report

Test:U:24.00V I:0.4258A P:10.22W PF:1.000 Freq:0Hz Lamp Flux:60.4311x1 lm		
NAME: SF10-24V-5050-84-SPI-RGBW(3000K)-B	TYPE:	WEIGHT:
SPEC.:	DIM.: Length=1m	SERIAL No.:
MFR.: OLympia lighting	SUR.:	Shielding Angle:

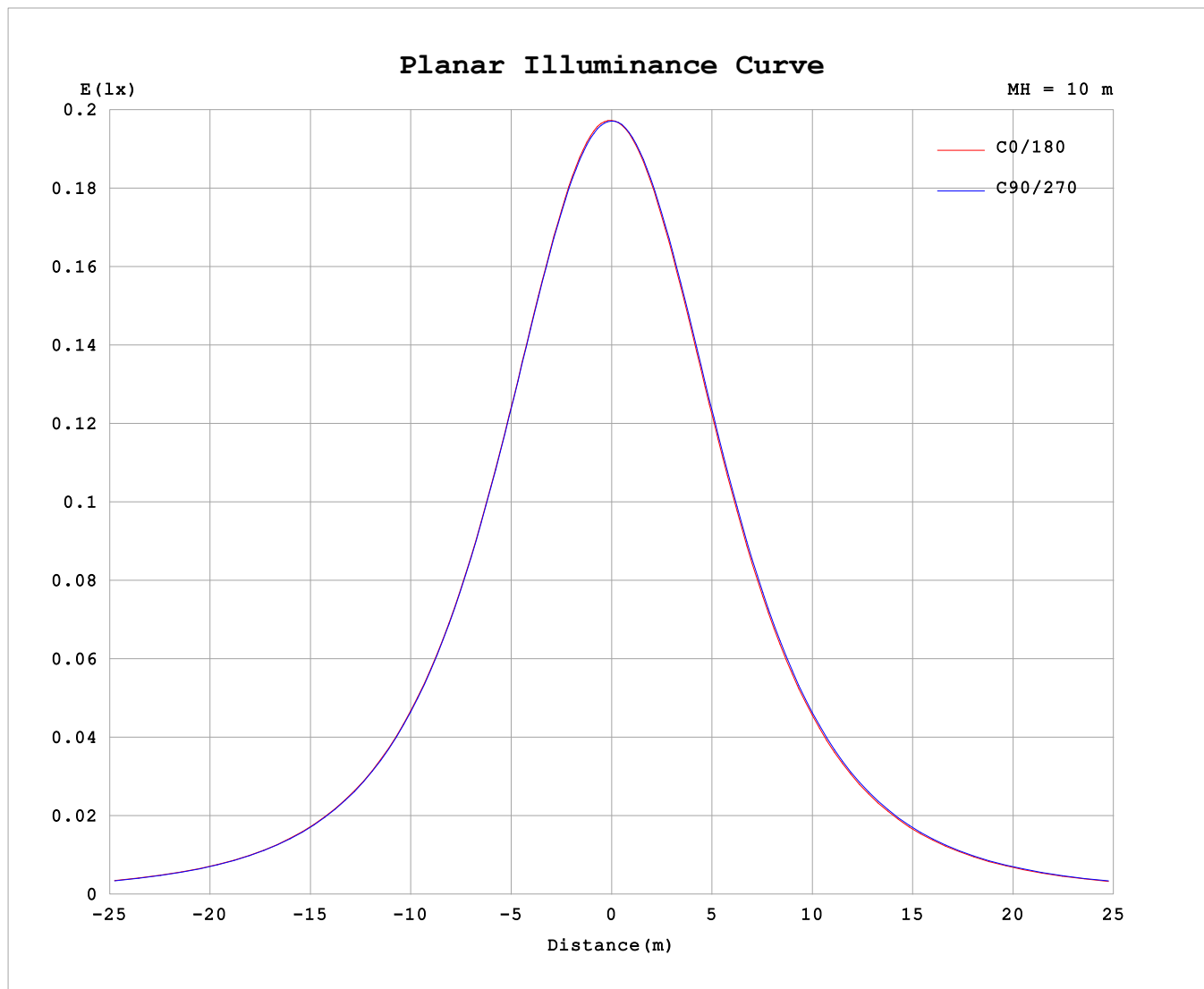
AvgL	cd/m2
L_0~180 (65) av	1296
L_0~180 (75) av	1273
L_0~180 (85) av	1356
L_90~270 (65) av	1309
L_90~270 (75) av	1297
L_90~270 (85) av	1362
L_45 (65) av	1302
L_45 (75) av	1281
L_45 (85) av	1337

Standard: GB/T 29293-2012

C Range: 0 - 360DEG
C Interval: 30.0DEG
Test Speed: HIGH
Temperature:25.3℃
Operators:
Test Date:2025-03-14

γ Range: 0 - 180DEG
γ Interval: 1.0DEG
Test System:EVERFINE GO-2000B_V1 SYSTEM V2.00.488
Humidity:65.0%
Test Distance:6.360m [K=1.0000]
Remarks:

Planar Illuminance Curve



C Range: 0 - 360DEG
C Interval: 30.0DEG
Test Speed: HIGH
Temperature: 25.3 °C
Operators:
Test Date: 2025-03-14

γ Range: 0 - 180DEG
 γ Interval: 1.0DEG
Test System: EVERFINE GO-2000B_V1 SYSTEM V2.00.488
Humidity: 65.0%
Test Distance: 6.360m [K=1.0000]
Remarks:

LUMINOUS DISTRIBUTION INTENSITY DATA

Test:U:24.00V I:0.4258A P:10.22W PF:1.000 Freq:0Hz Lamp Flux:60.431lx1 lm											
NAME: SF10-24V-5050-84-SPI-RGBW(3000K)-B						TYPE:			WEIGHT:		
SPEC.:						DIM.: Length=1m			SERIAL No.:		
MFR.: OLympia lighting						SUR.:			Shielding Angle:		

Table--1

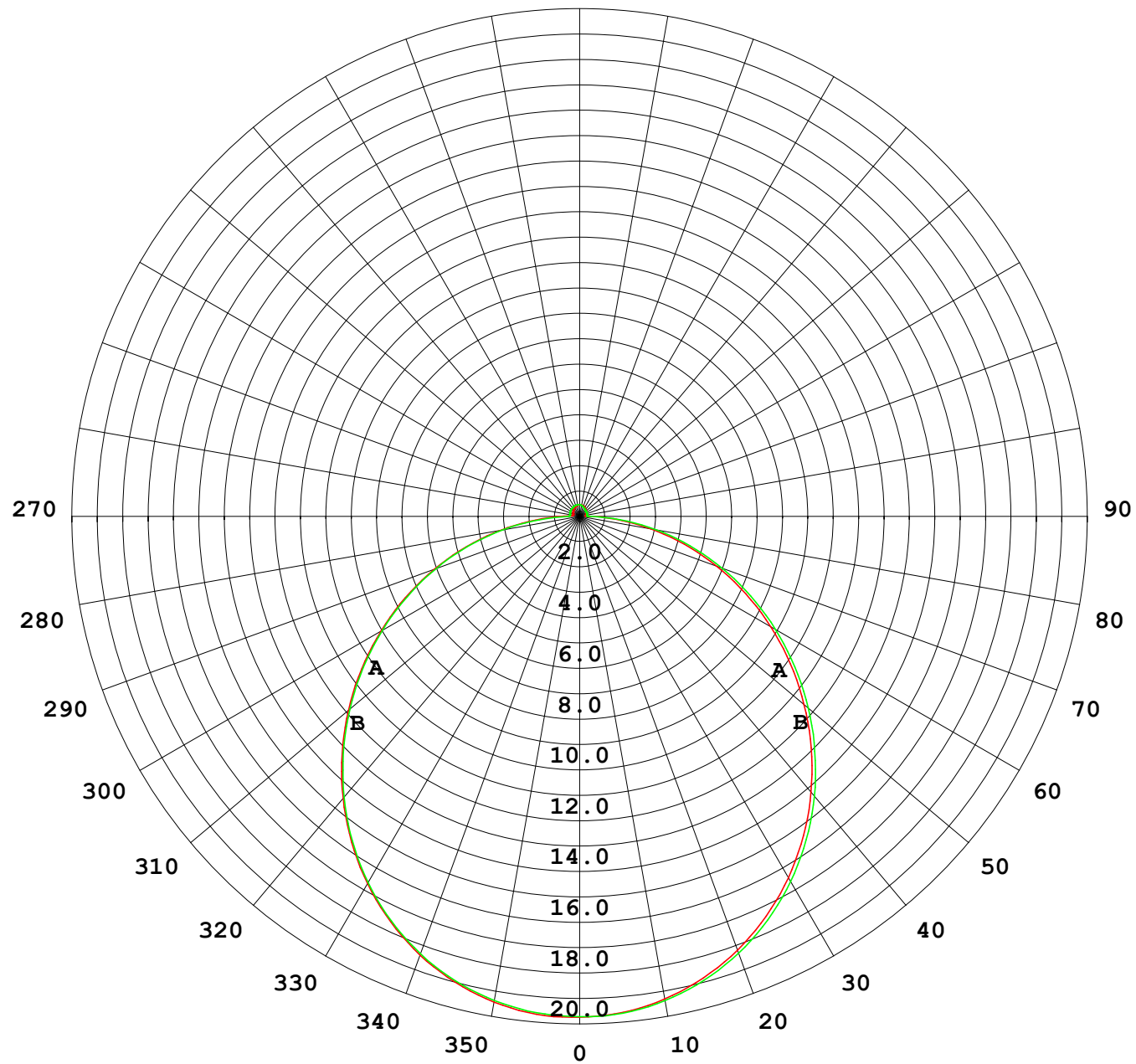
UNIT: cd

C (DEG) γ (DEG)	0	30	60	90	120	150	180	210	240	270	300	330							
0	19.7	19.7	19.7	19.7	19.7	19.7	19.7	19.7	19.7	19.7	19.7	19.7							
5	19.7	19.7	19.7	19.6	19.6	19.6	19.6	19.6	19.6	19.7	19.6	19.7							
10	19.4	19.4	19.4	19.4	19.4	19.3	19.3	19.3	19.3	19.4	19.4	19.4							
15	19.0	19.0	19.0	18.9	18.9	18.8	18.8	18.8	18.9	18.9	19.0	19.0							
20	18.4	18.4	18.4	18.3	18.3	18.2	18.2	18.2	18.2	18.3	18.4	18.4							
25	17.6	17.6	17.6	17.6	17.5	17.4	17.4	17.4	17.5	17.5	17.6	17.6							
30	16.7	16.7	16.7	16.7	16.6	16.5	16.4	16.5	16.5	16.6	16.7	16.7							
35	15.7	15.7	15.7	15.6	15.5	15.4	15.4	15.4	15.5	15.6	15.7	15.7							
40	14.5	14.5	14.5	14.4	14.3	14.2	14.2	14.2	14.3	14.4	14.5	14.5							
45	13.2	13.3	13.2	13.2	13.0	12.9	12.9	12.9	13.0	13.1	13.2	13.3							
50	11.9	11.9	11.9	11.8	11.7	11.6	11.5	11.5	11.7	11.8	11.9	11.9							
55	10.5	10.5	10.5	10.4	10.3	10.1	10.1	10.1	10.2	10.4	10.5	10.5							
60	9.04	9.07	9.04	8.97	8.81	8.70	8.69	8.69	8.79	8.91	9.03	9.08							
65	7.57	7.60	7.56	7.50	7.33	7.23	7.22	7.22	7.32	7.44	7.57	7.61							
70	6.09	6.11	6.07	6.02	5.85	5.75	5.75	5.75	5.84	5.97	6.09	6.14							
75	4.62	4.63	4.59	4.55	4.37	4.27	4.28	4.29	4.38	4.51	4.62	4.67							
80	3.16	3.17	3.11	3.07	2.89	2.81	2.83	2.84	2.93	3.06	3.16	3.21							
85	1.74	1.73	1.64	1.59	1.43	1.40	1.45	1.43	1.48	1.61	1.72	1.77							
90	0.75	0.69	0.53	0.44	0.44	0.52	0.55	0.52	0.39	0.31	0.50	0.70							
95	0.29	0.30	0.35	0.40	0.36	0.31	0.23	0.23	0.25	0.30	0.29	0.25							
100	0.28	0.30	0.34	0.40	0.34	0.30	0.24	0.23	0.25	0.28	0.26	0.24							
105	0.28	0.31	0.34	0.41	0.34	0.31	0.25	0.23	0.27	0.29	0.27	0.24							
110	0.27	0.32	0.36	0.42	0.35	0.33	0.27	0.24	0.28	0.30	0.28	0.25							
115	0.29	0.34	0.37	0.43	0.37	0.35	0.29	0.26	0.29	0.31	0.29	0.26							
120	0.31	0.35	0.38	0.43	0.38	0.36	0.30	0.28	0.31	0.32	0.29	0.27							
125	0.32	0.37	0.38	0.43	0.38	0.37	0.32	0.29	0.32	0.32	0.31	0.29							
130	0.34	0.38	0.39	0.43	0.40	0.38	0.33	0.31	0.33	0.32	0.31	0.30							
135	0.35	0.39	0.40	0.44	0.40	0.40	0.35	0.33	0.34	0.32	0.33	0.31							
140	0.37	0.41	0.41	0.44	0.41	0.41	0.37	0.35	0.36	0.33	0.35	0.32							
145	0.38	0.41	0.42	0.46	0.42	0.42	0.39	0.36	0.38	0.35	0.37	0.34							
150	0.39	0.43	0.43	0.46	0.43	0.43	0.40	0.38	0.40	0.37	0.39	0.36							
155	0.41	0.44	0.44	0.47	0.43	0.44	0.42	0.40	0.42	0.39	0.41	0.38							
160	0.42	0.45	0.45	0.47	0.44	0.45	0.44	0.42	0.43	0.41	0.42	0.39							
165	0.44	0.46	0.45	0.47	0.45	0.46	0.45	0.43	0.45	0.42	0.44	0.41							
170	0.45	0.46	0.45	0.47	0.45	0.46	0.46	0.44	0.46	0.44	0.45	0.44							
175	0.46	0.46	0.46	0.47	0.46	0.46	0.46	0.45	0.46	0.46	0.46	0.44							
180	0.46	0.46	0.46	0.47	0.46	0.46	0.46	0.46	0.46	0.46	0.46	0.46							

C Range: 0 - 360DEG
C Interval: 30.0DEG
Test Speed: HIGH
Temperature:25.3℃
Operators:
Test Date:2025-03-14

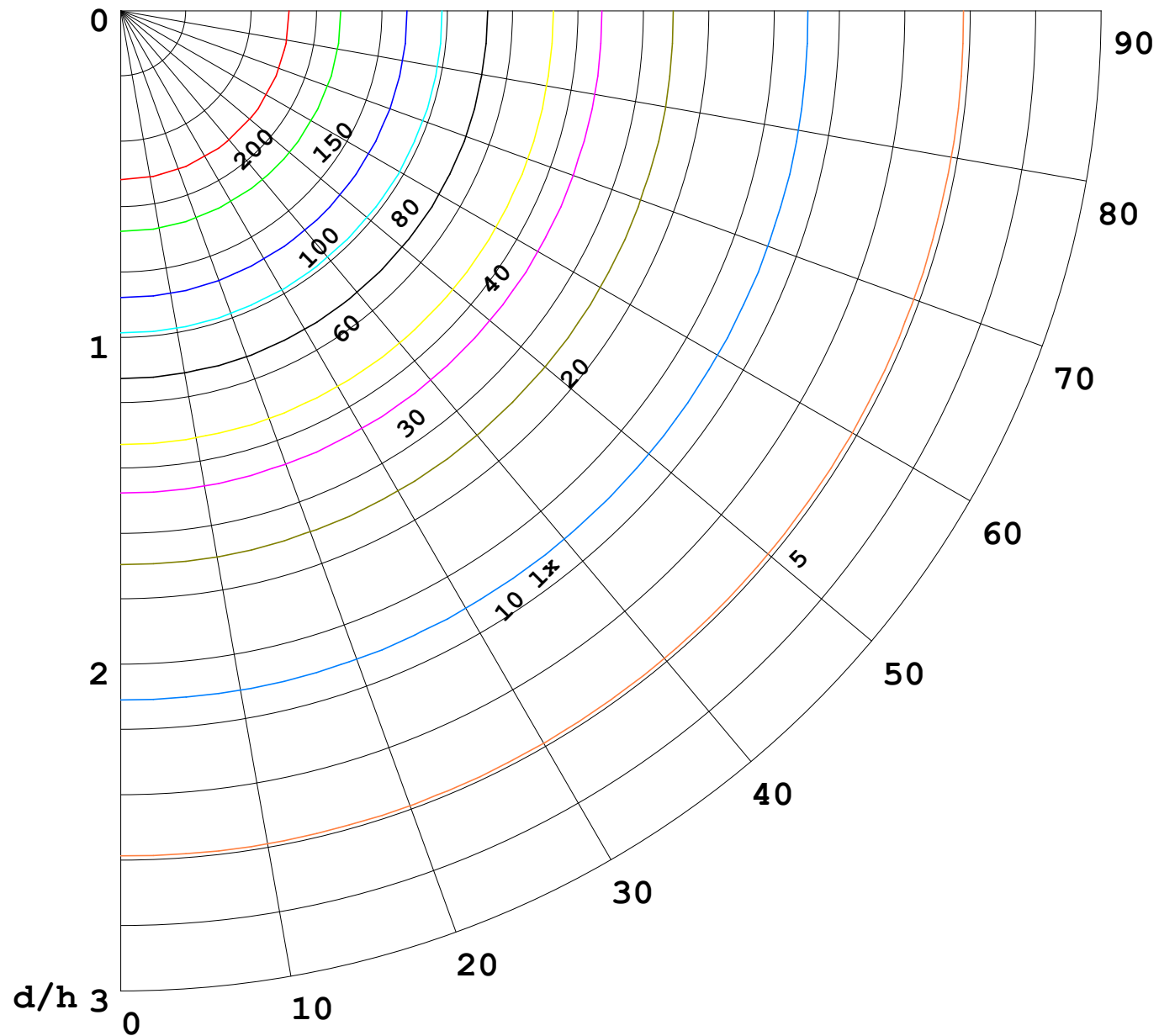
γ Range: 0 - 180DEG
γ Interval: 1.0DEG
Test System:EVERFINE GO-2000B_V1 SYSTEM V2.00.488
Humidity:65.0%
Test Distance:6.360m [K=1.0000]
Remarks:

I (cd)



1000 lm

$\kappa = 1$



F = 1000 lm
 K = 0.7
 Hcc = 0.8 m
 Hfc = 0.0 m
 Eave = 100 lx

	Pcc	Pw	Pfc
—————	70	50	30
—————	50	30	20

