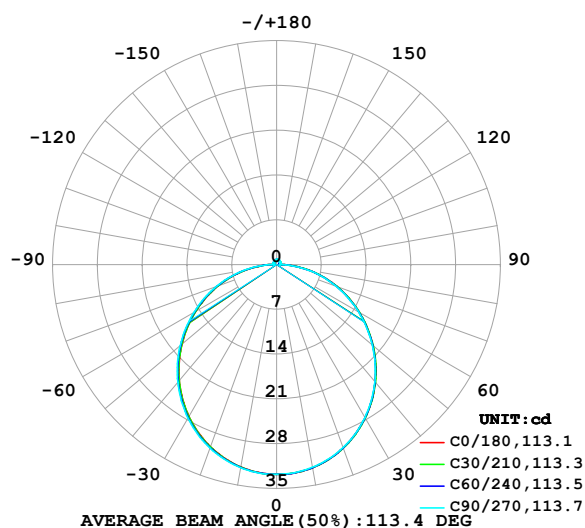


LUMINAIRE PHOTOMETRIC TEST REPORT

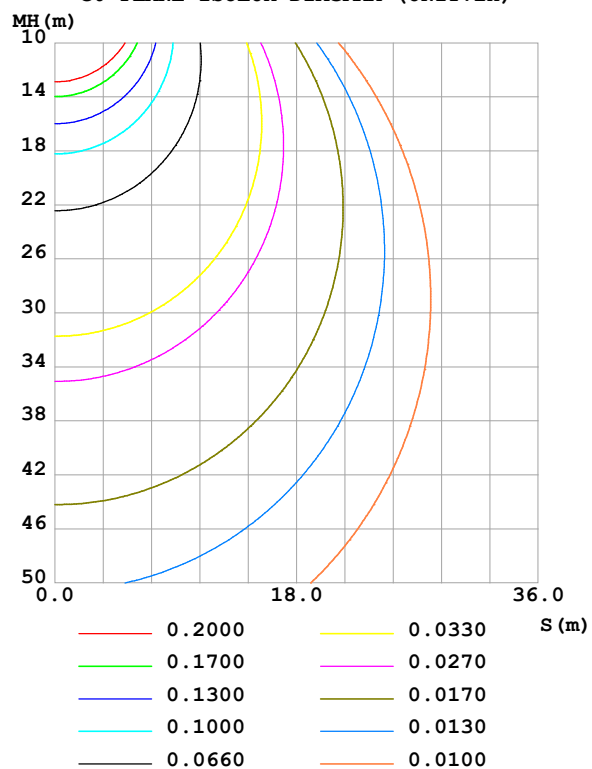
Test:U:24.00V I:0.3568A P:8.563W PF:1.000 Freq:0Hz Lamp Flux:100.555x1 lm		
NAME: SF10-24V-5050-84-SPI-RGBW(2700K)-R	TYPE:	WEIGHT:
SPEC.:	DIM.: Length=1m	SERIAL No.:
MFR.: OLympia lighting	SUR.:	Shielding Angle:

DATA OF LAMP		PHOTOMETRIC DATA Eff: 11.74 lm/W			
MODEL	2835	Imax (cd)	32.81	S/MH(C0/180)	1.24
NOMINAL POWER(W)		LOR(%)	100.0	S/MH(C90/270)	1.26
RATED VOLTAGE(V)	24	TOTAL FLUX(lm)	100.56	η UP,DN(C0-180)	1.9,48.0
NOMINAL FLUX(lm)	100.555	CIE CLASS	DIRECT	η UP,DN(C180-360)	1.8,48.3
LAMPS INSIDE	1	η up (%)	3.7	CIBSE SHR NOM	1.25
TEST VOLTAGE(V)		η down (%)	96.3	CIBSE SHR MAX	1.35

LUMINOUS INTENSITY DISTRIBUTION DIAGRAM



C0 PLANE ISOLUX DIAGRAM (UNIT:lx)



C Range: 0 - 360DEG
C Interval: 30.0DEG
Test Speed: HIGH
Temperature:25.3℃
Operators:
Test Date:2025-03-14

γ Range: 0 - 180DEG
 γ Interval: 1.0DEG
Test System:EVERFINE GO-2000B_V1 SYSTEM V2.00.488
Humidity:65.0%
Test Distance:6.360m [K=1.0000]
Remarks:

ZONAL FLUX DIAGRAM

ZONAL FLUX DIAGRAM:

γ	C0	C45	C90	C135	C180	C225	C270	C315	γ	Φ zone	Φ total	%lum, lamp
10	32.25	32.25	32.18	32.13	32.13	32.17	32.25	32.29	0- 10	3.103	3.103	3.09,3.09
20	30.49	30.51	30.43	30.31	30.28	30.38	30.52	30.59	10- 20	8.879	11.98	11.9,11.9
30	27.67	27.70	27.61	27.44	27.41	27.53	27.72	27.81	20- 30	13.43	25.41	25.3,25.3
40	23.99	24.00	23.89	23.69	23.68	23.82	24.04	24.16	30- 40	16.18	41.59	41.4,41.4
50	19.65	19.65	19.53	19.31	19.31	19.45	19.69	19.84	40- 50	16.82	58.41	58.1,58.1
60	14.91	14.91	14.79	14.55	14.57	14.70	14.94	15.11	50- 60	15.39	73.80	73.4,73.4
70	10.02	10.00	9.886	9.653	9.689	9.802	10.02	10.21	60- 70	12.24	86.04	85.6,85.6
80	5.145	5.093	4.963	4.754	4.818	4.906	5.107	5.303	70- 80	7.869	93.91	93.4,93.4
90	1.092	0.8521	0.4923	0.7434	0.9160	0.7884	0.5178	0.9511	80- 90	2.932	96.85	96.3,96.3
100	0.4503	0.4780	0.5155	0.4857	0.4191	0.4740	0.5184	0.4764	90-100	0.5651	97.41	96.9,96.9
110	0.4959	0.5179	0.5445	0.5322	0.4647	0.5179	0.5676	0.5162	100-110	0.5258	97.94	97.4,97.4
120	0.5501	0.5640	0.5880	0.5817	0.5217	0.5625	0.5966	0.5570	110-120	0.5388	98.47	97.9,97.9
130	0.5986	0.6042	0.6372	0.6296	0.5758	0.6114	0.6285	0.6006	120-130	0.5271	99.00	98.5,98.5
140	0.6471	0.6488	0.6836	0.6776	0.6357	0.6617	0.6718	0.6413	130-140	0.4904	99.49	98.9,98.9
150	0.6955	0.7035	0.7501	0.7300	0.6927	0.7078	0.7095	0.6907	140-150	0.4287	99.92	99.4,99.4
160	0.7411	0.7639	0.8052	0.7766	0.7469	0.7524	0.7501	0.7416	150-160	0.3395	100.3	99.7,99.7
170	0.7733	0.7998	0.8196	0.8048	0.7867	0.7927	0.7906	0.7934	160-170	0.2203	100.5	99.9,99.9
180	0.7896	0.8114	0.8254	0.8173	0.7924	0.8114	0.8196	0.8173	170-180	0.0766	100.6	100,100
DEG	LUMINOUS INTENSITY:cd									UNIT:lm		

Conical surface Flux(90deg): 50.053 lm

%lum = 49.8%

%lamp = 49.8%

Conical surface Flux(130deg): 80.407 lm

%lum = 80.0%

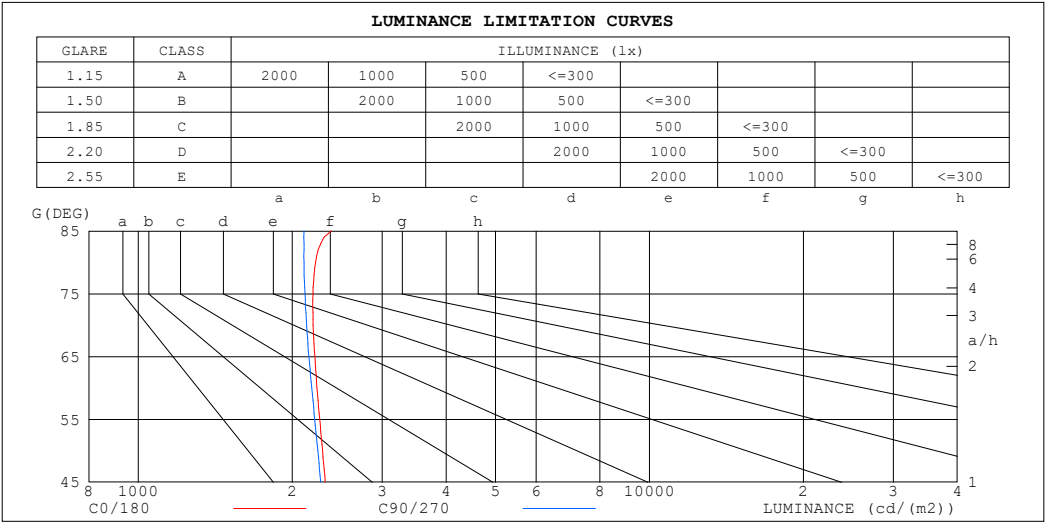
%lamp = 80.0%

C Range: 0 - 360DEG
 C Interval: 30.0DEG
 Test Speed: HIGH
 Temperature:25.3℃
 Operators:
 Test Date:2025-03-14

γ Range: 0 - 180DEG
 γ Interval: 1.0DEG
 Test System:EVERFINE GO-2000B_V1 SYSTEM V2.00.488
 Humidity:65.0%
 Test Distance:6.360m [K=1.0000]
 Remarks:

LUMINANCE LIMITATION CURVES

Test:U:24.00V I:0.3568A P:8.563W PF:1.000 Freq:0Hz Lamp Flux:100.555x1 lm		
NAME: SF10-24V-5050-84-SPI-RGBW(2700K)-R	TYPE:	WEIGHT:
SPEC.:	DIM.: Length=1m	SERIAL No.:
MFR.: OLympia lighting	SUR.:	Shielding Angle:



LUMINANCE cd/(m2)		
G (DEG)	C0/180	C90/270
85	2386	2110
80	2222	2110
75	2196	2119
70	2197	2134
65	2215	2157
60	2237	2184
55	2263	2212
50	2292	2243
45	2321	2274

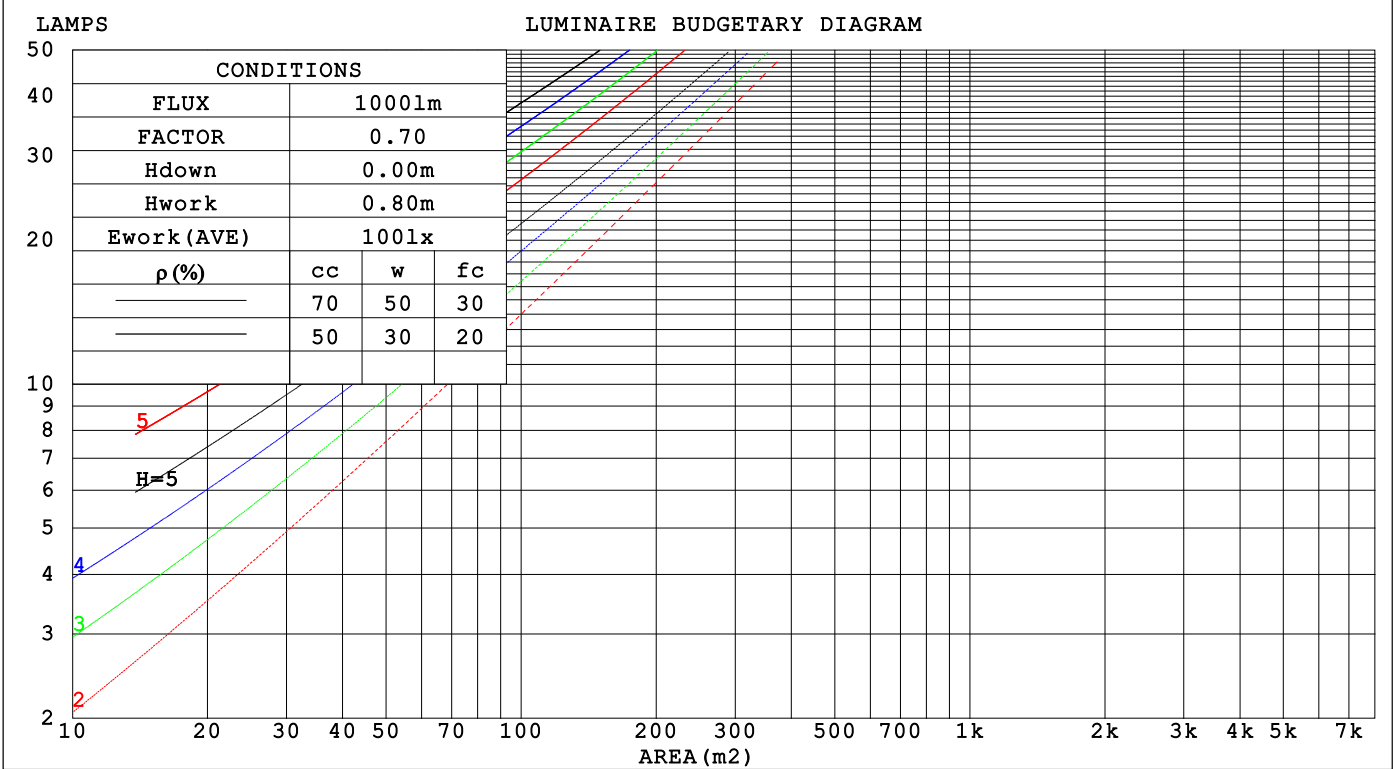
C Range: 0 - 360DEG
C Interval: 30.0DEG
Test Speed: HIGH
Temperature:25.3℃
Operators:
Test Date:2025-03-14

γ Range: 0 - 180DEG
γ Interval: 1.0DEG
Test System:EVERFINE GO-2000B_V1 SYSTEM V2.00.488
Humidity:65.0%
Test Distance:6.360m [K=1.0000]
Remarks:

CU AND LUMINAIRE BUDGETARY ESTIMATE DIAGRAM

Test:U:24.00V I:0.3568A P:8.563W PF:1.000 Freq:0Hz		
Lamp Flux:100.555x1 lm		
NAME: SF10-24V-5050-84-SPI-RGBW(2700K)-R	TYPE:	WEIGHT:
SPEC.:	DIM.: Length=1m	SERIAL No.:
MFR.: OLYMPIA lighting	SUR.:	Shielding Angle:

pcc	80%			70%			50%			30%			10%			0
pw	50%	30%	10%	50%	30%	10%	50%	30%	10%	50%	30%	10%	50%	30%	10%	0
pfc	20%			20%			20%			20%			20%			0
RCR	RCR:Room Cavity Ratio Coefficients of Utilization(CU)															
0.0	1.18	1.18	1.18	1.15	1.15	1.15	1.09	1.09	1.09	1.04	1.04	1.04	.99	.99	.99	.96
1.0	1.02	.98	.94	.90	.95	.92	.95	.91	.88	.90	.87	.85	.86	.84	.82	.79
2.0	.89	.82	.76	.86	.80	.74	.82	.77	.72	.78	.74	.70	.75	.71	.68	.65
3.0	.78	.69	.62	.76	.68	.62	.72	.66	.60	.69	.63	.59	.66	.61	.57	.55
4.0	.69	.60	.53	.67	.59	.52	.64	.57	.51	.61	.55	.50	.59	.53	.49	.47
5.0	.61	.52	.45	.60	.51	.45	.57	.50	.44	.55	.48	.43	.53	.47	.42	.40
6.0	.55	.46	.39	.54	.45	.39	.52	.44	.38	.50	.43	.38	.48	.42	.37	.35
7.0	.50	.41	.35	.49	.40	.34	.47	.39	.34	.45	.38	.33	.43	.38	.33	.31
8.0	.45	.37	.31	.45	.36	.31	.43	.36	.30	.41	.35	.30	.40	.34	.29	.28
9.0	.42	.33	.28	.41	.33	.28	.39	.32	.27	.38	.32	.27	.37	.31	.27	.25
10.0	.38	.30	.25	.38	.30	.25	.37	.30	.25	.35	.29	.24	.34	.28	.24	.22



C Range: 0 - 360DEG

C Interval: 30.0DEG

Test Speed: HIGH

Temperature:25.3℃

Operators:

Test Date:2025-03-14

γ Range: 0 - 180DEG

γ Interval: 1.0DEG

Test System:EVERFINE GO-2000B_V1 SYSTEM V2.00.488

Humidity:65.0%

Test Distance:6.360m [K=1.0000]

Remarks:

WEC AND CCEC

Test:U:24.00V I:0.3568A P:8.563W PF:1.000 Freq:0Hz Lamp Flux:100.555x1 lm		
NAME: SF10-24V-5050-84-SPI-RGBW(2700K)-R	TYPE:	WEIGHT:
SPEC.:	DIM.: Length=1m	SERIAL No.:
MFR.: OLympia lighting	SUR.:	Shielding Angle:

pcc	80%			70%			50%			30%			10%			0														
pw	50%	30%	10%	50%	30%	10%	50%	30%	10%	50%	30%	10%	50%	30%	10%	0														
pfc	20%			20%			20%			20%			20%			0														
RCR	RCR:Room Cavity Ratio															Wall Exitance Coefficients(WEC)														
0.0																														
1.0	.325	.185	.059	.317	.181	.057	.302	.173	.055	.288	.166	.053	.275	.159	.051															
2.0	.301	.165	.051	.293	.162	.050	.280	.156	.048	.267	.150	.047	.255	.144	.046															
3.0	.276	.147	.044	.269	.144	.043	.257	.139	.042	.246	.135	.041	.235	.130	.040															
4.0	.253	.131	.039	.247	.129	.038	.236	.125	.037	.226	.121	.037	.217	.118	.036															
5.0	.233	.119	.034	.228	.117	.034	.218	.114	.033	.209	.110	.033	.200	.107	.032															
6.0	.215	.108	.031	.211	.106	.031	.202	.104	.030	.194	.101	.030	.186	.098	.029															
7.0	.200	.099	.028	.196	.098	.028	.188	.095	.027	.181	.093	.027	.174	.090	.027															
8.0	.187	.091	.026	.183	.090	.025	.176	.088	.025	.169	.086	.025	.163	.084	.024															
9.0	.175	.084	.024	.171	.083	.023	.165	.081	.023	.159	.080	.023	.153	.078	.022															
10.0	.164	.079	.022	.161	.078	.022	.155	.076	.021	.150	.074	.021	.144	.073	.021															

pcc	80%			70%			50%			30%			10%			0
pw	50%	30%	10%	50%	30%	10%	50%	30%	10%	50%	30%	10%	50%	30%	10%	0
pfc	20%			20%			20%			20%			20%			0
RCR	RCR:Room Cavity Ratio						Ceiling Cavity Exitance Coefficients (CCEC)									
0.0	.219	.219	.219	.187	.187	.187	.128	.128	.128	.073	.073	.073	.023	.023	.023	
1.0	.210	.184	.161	.179	.158	.139	.123	.109	.096	.071	.063	.056	.023	.020	.018	
2.0	.202	.160	.125	.173	.138	.108	.119	.096	.076	.068	.056	.044	.022	.018	.014	
3.0	.194	.143	.102	.167	.123	.089	.114	.086	.062	.066	.050	.037	.021	.016	.012	
4.0	.187	.130	.087	.160	.112	.075	.110	.078	.053	.064	.046	.031	.020	.015	.010	
5.0	.179	.120	.076	.154	.103	.066	.106	.072	.047	.061	.042	.028	.020	.014	.009	
6.0	.172	.111	.068	.148	.096	.059	.102	.067	.042	.059	.040	.025	.019	.013	.008	
7.0	.165	.105	.062	.142	.091	.054	.098	.064	.038	.057	.037	.023	.018	.012	.008	
8.0	.158	.099	.058	.136	.086	.050	.094	.060	.036	.055	.035	.021	.018	.012	.007	
9.0	.152	.094	.054	.131	.081	.047	.091	.057	.034	.053	.034	.020	.017	.011	.007	
10.0	.147	.090	.052	.126	.078	.045	.088	.055	.032	.051	.032	.019	.017	.011	.006	

C Range: 0 - 360DEG
C Interval: 30.0DEG
Test Speed: HIGH
Temperature:25.3℃
Operators:
Test Date:2025-03-14

γ Range: 0 - 180DEG
γ Interval: 1.0DEG
Test System:EVERFINE GO-2000B_V1 SYSTEM V2.00.488
Humidity:65.0%
Test Distance:6.360m [K=1.0000]
Remarks:

UGR(Unified Glare Rating) Table

Test:U:24.00V I:0.3568A P:8.563W PF:1.000 Freq:0Hz Lamp Flux:100.555x1 lm										
NAME: SF10-24V-5050-84-SPI-RGBW(2700K)-R					TYPE:			WEIGHT:		
SPEC.:					DIM.: Length=1m			SERIAL No.:		
MFR.: OLympia lighting					SUR.:			Shielding Angle:		
ceiling/cavity	0.7	0.7	0.5	0.5	0.3	0.7	0.7	0.5	0.5	0.3
walls	0.5	0.3	0.5	0.3	0.3	0.5	0.3	0.5	0.3	0.3
working plane	0.2	0.2	0.2	0.2	0.2	0.2	0.2	0.2	0.2	0.2
Room dimensions	Viewed crosswise					Viewed endwise				
x = 2H y = 2H	22.7	24.2	23.0	24.5	24.8	22.6	24.1	22.9	24.4	24.6
3H	24.4	25.8	24.8	26.1	26.4	24.3	25.7	24.6	26.0	26.3
4H	25.2	26.5	25.5	26.8	27.1	25.0	26.3	25.4	26.7	27.0
6H	25.8	27.1	26.2	27.4	27.8	25.6	26.9	26.0	27.2	27.6
8H	26.1	27.3	26.5	27.6	28.0	25.9	27.1	26.3	27.4	27.8
12H	26.3	27.4	26.7	27.8	28.2	26.0	27.2	26.5	27.6	27.9
4H 2H	23.3	24.7	23.7	25.0	25.3	23.3	24.6	23.6	24.9	25.2
3H	25.3	26.4	25.7	26.8	27.2	25.1	26.3	25.5	26.7	27.0
4H	26.2	27.2	26.6	27.6	28.0	26.0	27.1	26.5	27.5	27.9
6H	26.9	27.9	27.4	28.3	28.8	26.8	27.7	27.2	28.1	28.6
8H	27.3	28.1	27.7	28.6	29.0	27.1	28.0	27.6	28.4	28.9
12H	27.5	28.3	28.0	28.8	29.3	27.3	28.1	27.8	28.6	29.1
8H 4H	26.5	27.4	27.0	27.8	28.3	26.4	27.2	26.8	27.7	28.1
6H	27.5	28.2	28.0	28.7	29.2	27.3	28.0	27.8	28.5	29.0
8H	27.9	28.6	28.4	29.1	29.6	27.7	28.4	28.2	28.9	29.4
12H	28.3	28.9	28.8	29.4	29.9	28.1	28.6	28.6	29.1	29.7
12H 4H	26.5	27.3	27.0	27.8	28.3	26.4	27.2	26.9	27.7	28.1
6H	27.6	28.2	28.1	28.7	29.2	27.4	28.1	27.9	28.6	29.1
8H	28.1	28.6	28.6	29.1	29.7	27.9	28.4	28.4	29.0	29.5
Variations with the observer position at spacings(CIE Pub.117):										
S = 1.0H	+ 0.1 / - 0.2					+ 0.1 / - 0.2				
1.5H	+ 0.2 / - 0.3					+ 0.2 / - 0.3				
2.0H	+ 0.1 / - 0.3					+ 0.1 / - 0.3				

CIE Pub.117, 100.6 lm Total Lamp Luminous Flux Correct (8log(F/F0) = -8.0)
Area: 0.0135 m2

C Range: 0 - 360DEG
C Interval: 30.0DEG
Test Speed: HIGH
Temperature:25.3℃
Operators:
Test Date:2025-03-14

γ Range: 0 - 180DEG
γ Interval: 1.0DEG
Test System:EVERFINE GO-2000B_V1 SYSTEM V2.00.488
Humidity:65.0%
Test Distance:6.360m [K=1.0000]
Remarks:

UTILIZATION FACTORS TABLE

Test:U:24.00V I:0.3568A P:8.563W PF:1.000 Freq:0Hz Lamp Flux:100.555x1 lm		
NAME: SF10-24V-5050-84-SPI-RGBW(2700K)-R	TYPE:	WEIGHT:
SPEC.:	DIM.: Length=1m	SERIAL No.:
MFR.: OLympia lighting	SUR.:	Shielding Angle:

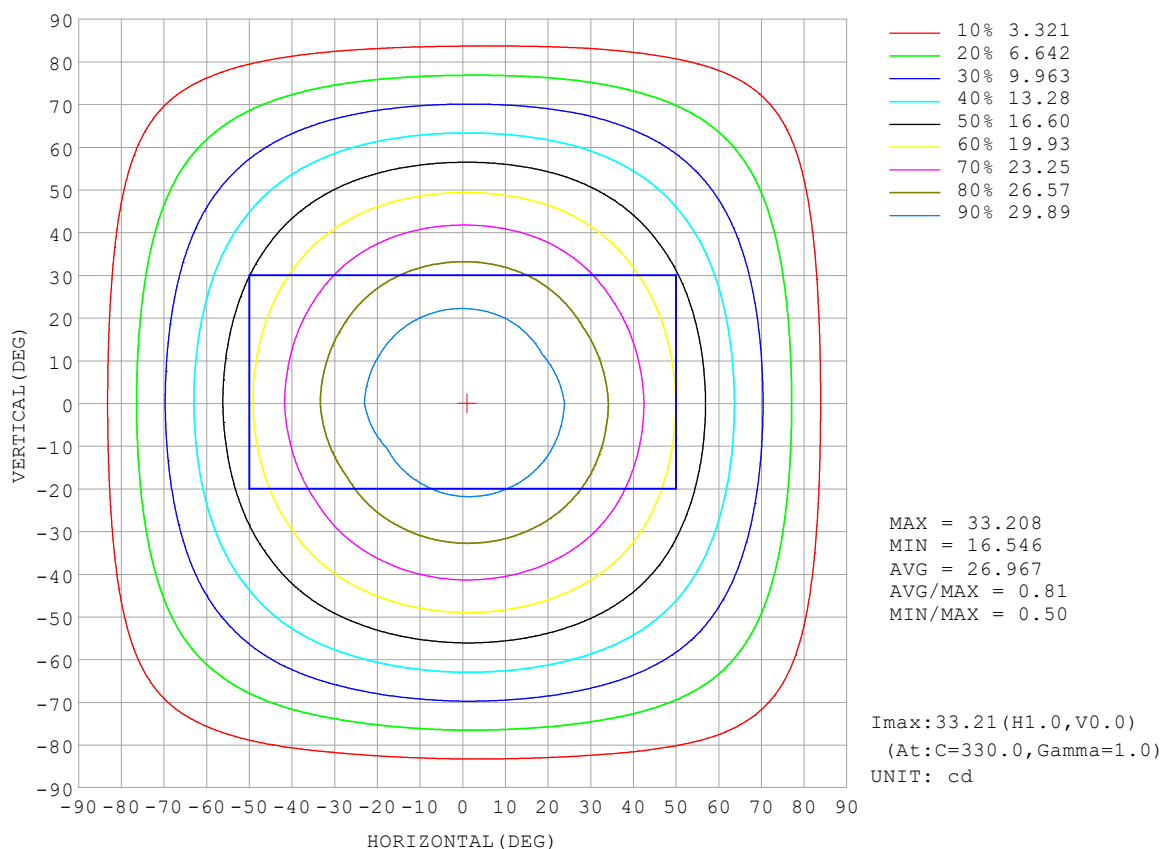
REFLECTANCE										
Ceiling	0.8	0.8	0.8	0.7	0.7	0.7	0.5	0.5	0.5	0
Walls	0.7	0.5	0.3	0.7	0.5	0.3	0.7	0.5	0.3	0
Working plane	0.2	0.2	0.2	0.2	0.2	0.2	0.2	0.2	0.2	0
ROOM INDEX	UTILIZATION FACTORS (PERCENT) $k(RI) \times RCR = 5$									
$k = 0.60$	56	44	37	55	44	37	53	43	36	30
0.80	65	54	46	64	53	46	62	52	45	38
1.00	74	62	55	72	62	54	70	63	54	46
1.25	81	70	62	79	69	62	76	67	61	53
1.50	86	75	68	84	74	68	80	72	66	58
2.00	93	84	77	91	82	76	87	80	74	65
2.50	97	89	82	94	87	81	90	84	79	69
3.00	100	93	87	98	91	86	93	88	83	74
4.00	104	98	93	102	96	92	97	92	88	78
5.00	107	102	97	104	99	95	99	95	92	81
ROOM INDEX	UF (total)									Direct
According to DIN EN 13032-2 2004			Suspended					SHRNOM = 1.25		

C Range: 0 - 360DEG
 C Interval: 30.0DEG
 Test Speed: HIGH
 Temperature: 25.3 °C
 Operators:
 Test Date: 2025-03-14

γ Range: 0 - 180DEG
 γ Interval: 1.0DEG
 Test System: EVERFINE GO-2000B_V1 SYSTEM V2.00.488
 Humidity: 65.0%
 Test Distance: 6.360m [K=1.0000]
 Remarks:

ISOCANDELA DIAGRAM

Test:U:24.00V I:0.3568A P:8.563W PF:1.000 Freq:0Hz Lamp Flux:100.555x1 lm		
NAME: SF10-24V-5050-84-SPI-RGBW(2700K)-R	TYPE:	WEIGHT:
SPEC.:	DIM.: Length=1m	SERIAL No.:
MFR.: OLympia lighting	SUR.:	Shielding Angle:

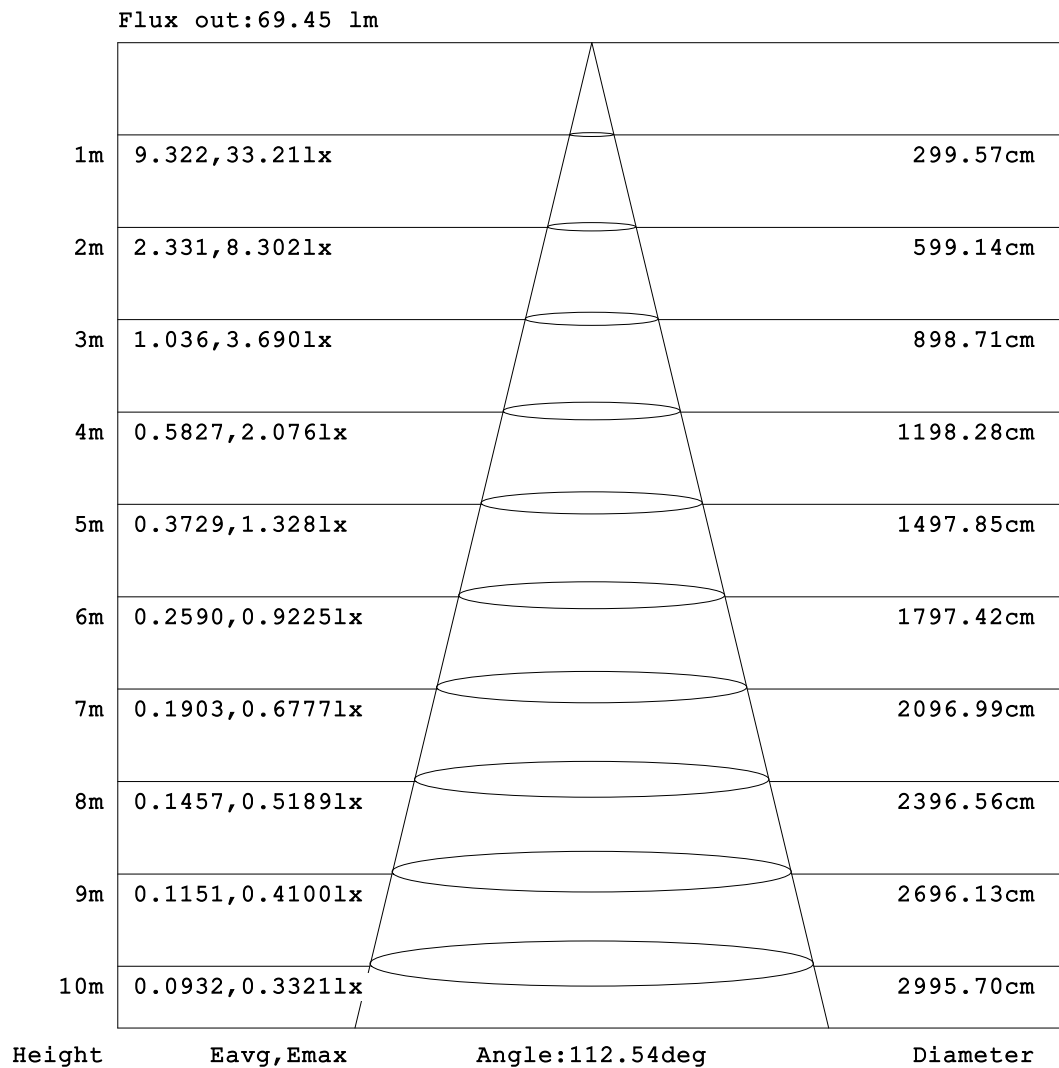


C Range: 0 - 360DEG
C Interval: 30.0DEG
Test Speed: HIGH
Temperature:25.3℃
Operators:
Test Date:2025-03-14

γ Range: 0 - 180DEG
γ Interval: 1.0DEG
Test System:EVERFINE GO-2000B_V1 SYSTEM V2.00.488
Humidity:65.0%
Test Distance:6.360m [K=1.0000]
Remarks:

AAI Figure

Test:U:24.00V I:0.3568A P:8.563W PF:1.000 Freq:0Hz Lamp Flux:100.555x1 lm		
NAME: SF10-24V-5050-84-SPI-RGBW(2700K)-R	TYPE:	WEIGHT:
SPEC.:	DIM.: Length=1m	SERIAL No.:
MFR.: OLympia lighting	SUR.:	Shielding Angle:



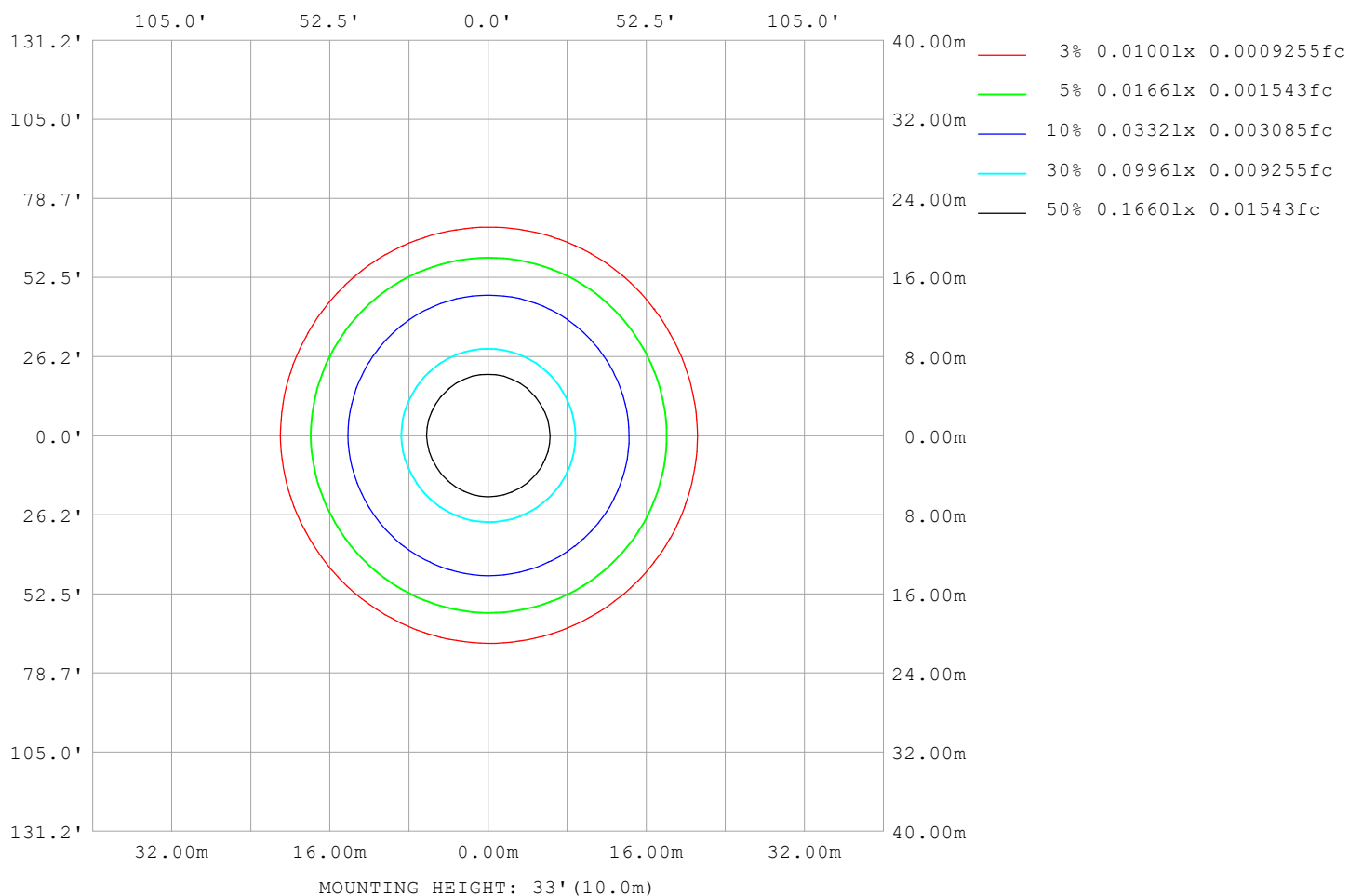
Note:The Curves indicate the illuminated area and the average illumination when the luminaire is at different distance.

C Range: 0 - 360DEG
C Interval: 30.0DEG
Test Speed: HIGH
Temperature:25.3℃
Operators:
Test Date:2025-03-14

γ Range: 0 - 180DEG
γ Interval: 1.0DEG
Test System:EVERFINE GO-2000B_V1 SYSTEM V2.00.488
Humidity:65.0%
Test Distance:6.360m [K=1.0000]
Remarks:

ISOLUX DIAGRAM

Test:U:24.00V I:0.3568A P:8.563W PF:1.000 Freq:0Hz Lamp Flux:100.555x1 lm		
NAME: SF10-24V-5050-84-SPI-RGBW(2700K)-R	TYPE:	WEIGHT:
SPEC.:	DIM.: Length=1m	SERIAL No.:
MFR.: OLympia lighting	SUR.:	Shielding Angle:



C Range: 0 - 360DEG
C Interval: 30.0DEG
Test Speed: HIGH
Temperature: 25.3°C
Operators:
Test Date: 2025-03-14

γ Range: 0 - 180DEG
γ Interval: 1.0DEG
Test System: EVERFINE GO-2000B_V1 SYSTEM V2.00.488
Humidity: 65.0%
Test Distance: 6.360m [K=1.0000]
Remarks:

LED Avg.L Report

Test:U:24.00V I:0.3568A P:8.563W PF:1.000 Freq:0Hz Lamp Flux:100.555x1 lm		
NAME: SF10-24V-5050-84-SPI-RGBW(2700K)-R	TYPE:	WEIGHT:
SPEC.:	DIM.: Length=1m	SERIAL No.:
MFR.: OLympia lighting	SUR.:	Shielding Angle:

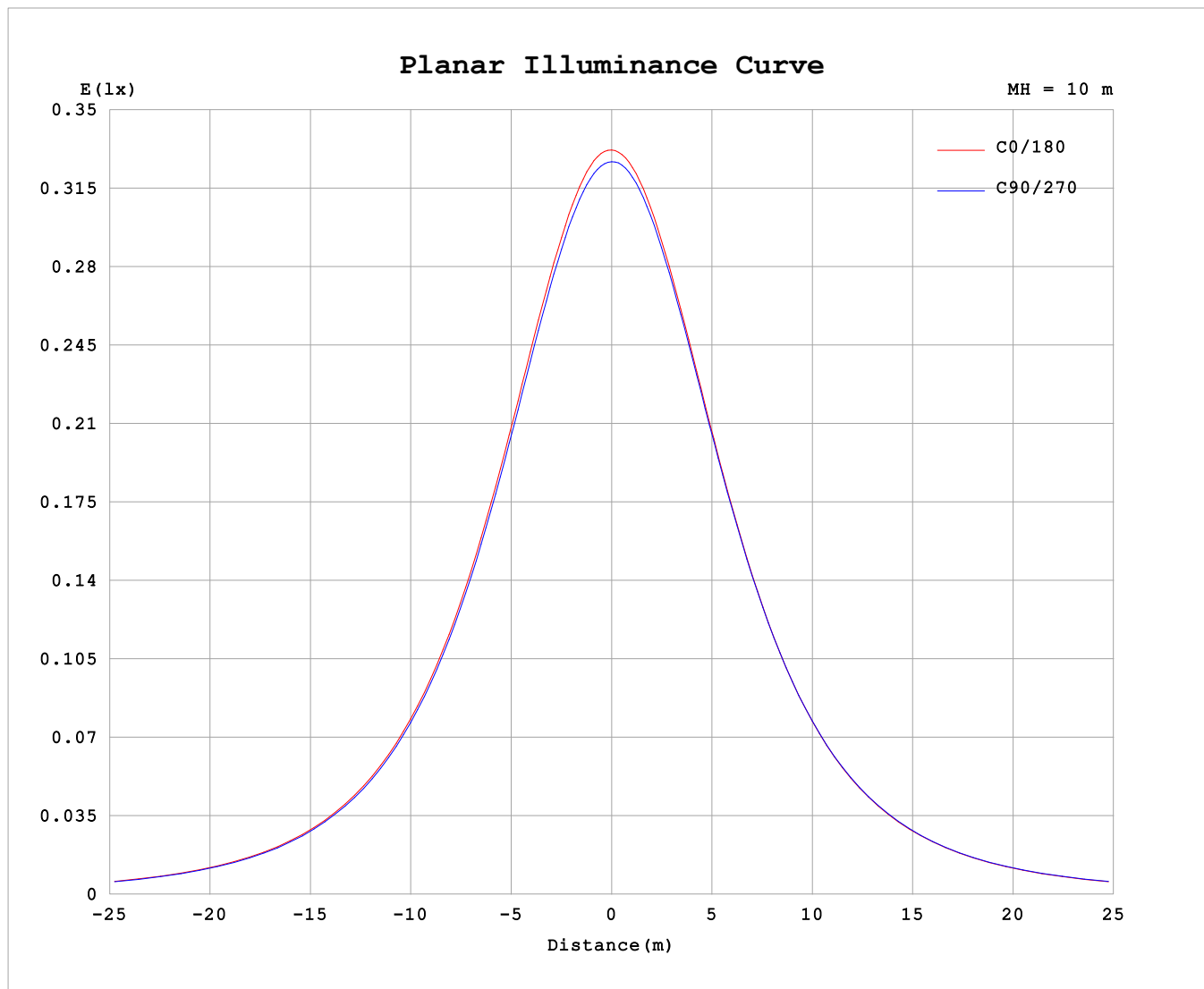
AvgL	cd/m2
L_0~180 (65) av	2158
L_0~180 (75) av	2121
L_0~180 (85) av	2227
L_90~270 (65) av	2177
L_90~270 (75) av	2145
L_90~270 (85) av	2188
L_45 (65) av	2169
L_45 (75) av	2135
L_45 (85) av	2202

Standard: GB/T 29293-2012

C Range: 0 - 360DEG
C Interval: 30.0DEG
Test Speed: HIGH
Temperature:25.3℃
Operators:
Test Date:2025-03-14

γ Range: 0 - 180DEG
γ Interval: 1.0DEG
Test System:EVERFINE GO-2000B_V1 SYSTEM V2.00.488
Humidity:65.0%
Test Distance:6.360m [K=1.0000]
Remarks:

Planar Illuminance Curve



C Range: 0 - 360DEG
C Interval: 30.0DEG
Test Speed: HIGH
Temperature: 25.3 °C
Operators:
Test Date: 2025-03-14

γ Range: 0 - 180DEG
 γ Interval: 1.0DEG
Test System: EVERFINE GO-2000B_V1 SYSTEM V2.00.488
Humidity: 65.0%
Test Distance: 6.360m [K=1.0000]
Remarks:

LUMINOUS DISTRIBUTION INTENSITY DATA

Test:U:24.00V I:0.3568A P:8.563W PF:1.000 Freq:0Hz Lamp Flux:100.555x1 lm											
NAME: SF10-24V-5050-84-SPI-RGBW(2700K)-R						TYPE:			WEIGHT:		
SPEC.:						DIM.: Length=1m			SERIAL No.:		
MFR.: OLympia lighting						SUR.:			Shielding Angle:		

Table--1

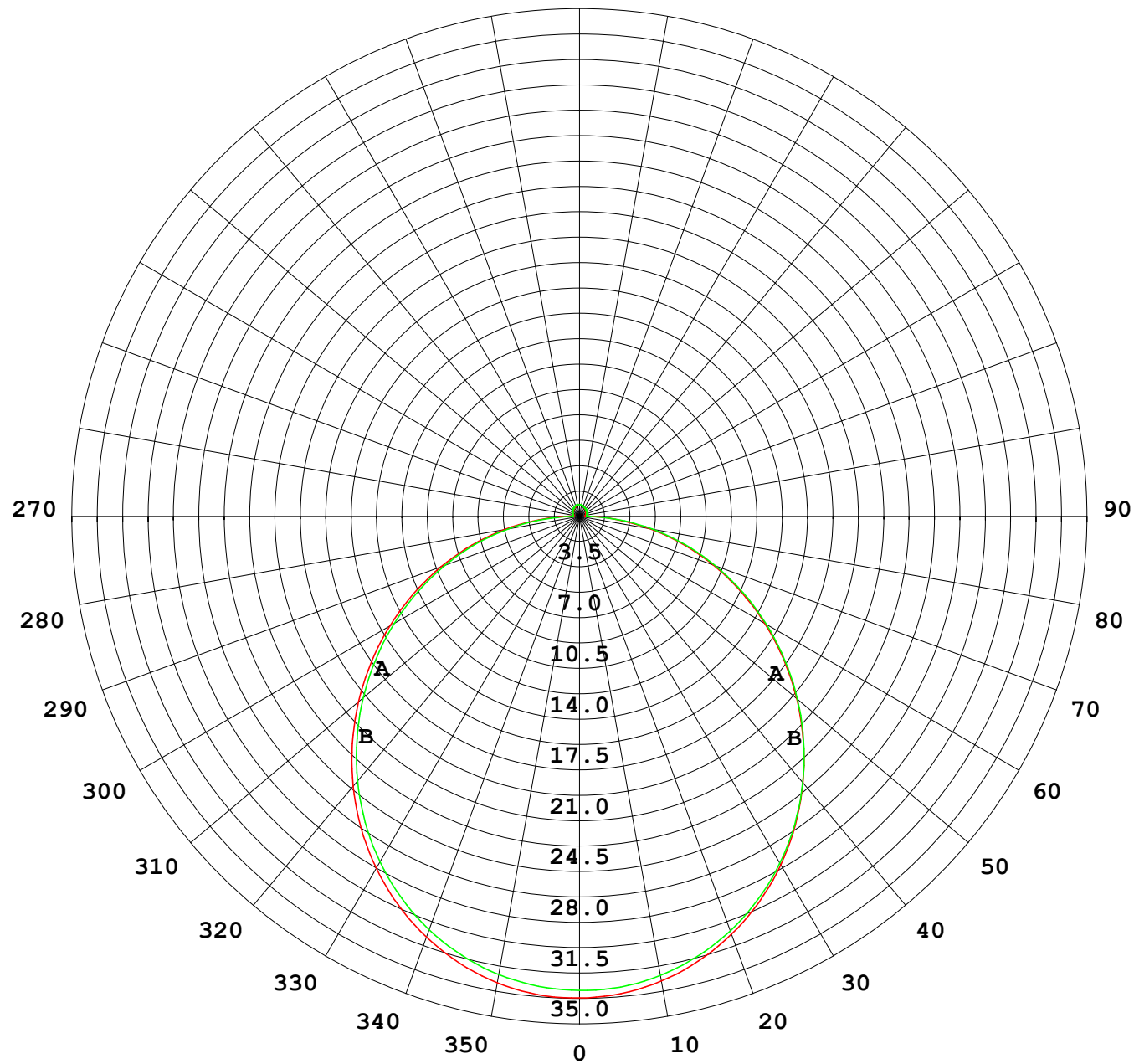
UNIT: cd

C (DEG) γ (DEG)	0	30	60	90	120	150	180	210	240	270	300	330							
0	32.8	32.8	32.8	32.8	32.8	32.8	32.8	32.8	32.8	32.8	32.8	32.8							
5	32.7	32.7	32.7	32.6	32.6	32.6	32.6	32.6	32.6	32.7	32.7	32.7							
10	32.2	32.3	32.2	32.2	32.1	32.1	32.1	32.1	32.2	32.2	32.3	32.3							
15	31.5	31.5	31.5	31.4	31.4	31.3	31.3	31.4	31.5	31.5	31.6	31.6							
20	30.5	30.5	30.5	30.4	30.3	30.3	30.3	30.3	30.4	30.5	30.6	30.6							
25	29.2	29.2	29.2	29.1	29.0	29.0	29.0	29.0	29.2	29.2	29.3	29.3							
30	27.7	27.7	27.7	27.6	27.5	27.4	27.4	27.4	27.6	27.7	27.8	27.8							
35	25.9	26.0	25.9	25.9	25.7	25.6	25.6	25.7	25.9	26.0	26.1	26.1							
40	24.0	24.0	24.0	23.9	23.7	23.7	23.7	23.7	23.9	24.0	24.2	24.1							
45	21.9	21.9	21.8	21.8	21.6	21.5	21.6	21.6	21.8	21.9	22.1	22.0							
50	19.6	19.7	19.6	19.5	19.3	19.3	19.3	19.3	19.6	19.7	19.9	19.8							
55	17.3	17.4	17.3	17.2	17.0	16.9	17.0	17.0	17.2	17.4	17.5	17.5							
60	14.9	15.0	14.9	14.8	14.6	14.5	14.6	14.6	14.8	14.9	15.1	15.1							
65	12.5	12.5	12.4	12.3	12.1	12.1	12.1	12.1	12.4	12.5	12.7	12.6							
70	10.0	10.1	9.94	9.89	9.67	9.64	9.69	9.70	9.91	10.02	10.2	10.2							
75	7.58	7.61	7.48	7.43	7.21	7.19	7.24	7.25	7.44	7.56	7.76	7.73							
80	5.14	5.17	5.02	4.96	4.76	4.75	4.82	4.82	5.00	5.11	5.31	5.30							
85	2.77	2.76	2.56	2.49	2.31	2.38	2.47	2.43	2.55	2.66	2.86	2.87							
90	1.09	1.00	0.71	0.49	0.64	0.85	0.92	0.87	0.71	0.52	0.83	1.07							
95	0.45	0.46	0.48	0.50	0.47	0.46	0.39	0.43	0.48	0.50	0.49	0.44							
100	0.45	0.48	0.47	0.52	0.48	0.49	0.42	0.44	0.51	0.52	0.51	0.44							
105	0.47	0.51	0.49	0.53	0.50	0.51	0.44	0.45	0.54	0.54	0.53	0.46							
110	0.50	0.53	0.51	0.54	0.52	0.54	0.46	0.48	0.56	0.57	0.55	0.48							
115	0.53	0.55	0.53	0.57	0.55	0.57	0.49	0.50	0.58	0.58	0.57	0.50							
120	0.55	0.58	0.55	0.59	0.58	0.59	0.52	0.53	0.60	0.60	0.60	0.52							
125	0.58	0.61	0.56	0.61	0.60	0.61	0.54	0.55	0.62	0.62	0.61	0.55							
130	0.60	0.62	0.59	0.64	0.62	0.64	0.58	0.58	0.64	0.63	0.63	0.57							
135	0.62	0.64	0.61	0.66	0.64	0.67	0.60	0.61	0.66	0.65	0.66	0.59							
140	0.65	0.66	0.64	0.68	0.67	0.69	0.64	0.63	0.69	0.67	0.67	0.61							
145	0.67	0.68	0.67	0.72	0.70	0.72	0.66	0.66	0.71	0.69	0.69	0.64							
150	0.70	0.71	0.70	0.75	0.72	0.74	0.69	0.68	0.73	0.71	0.71	0.67							
155	0.72	0.73	0.74	0.78	0.74	0.77	0.72	0.71	0.75	0.74	0.74	0.69							
160	0.74	0.75	0.77	0.81	0.76	0.79	0.75	0.73	0.77	0.75	0.77	0.72							
165	0.76	0.78	0.79	0.82	0.78	0.80	0.78	0.76	0.79	0.77	0.78	0.74							
170	0.77	0.80	0.80	0.82	0.80	0.81	0.79	0.77	0.81	0.79	0.81	0.78							
175	0.78	0.81	0.80	0.82	0.81	0.82	0.79	0.79	0.82	0.80	0.83	0.80							
180	0.79	0.81	0.81	0.83	0.82	0.82	0.79	0.80	0.82	0.82	0.83	0.81							

C Range: 0 - 360DEG
C Interval: 30.0DEG
Test Speed: HIGH
Temperature:25.3℃
Operators:
Test Date:2025-03-14

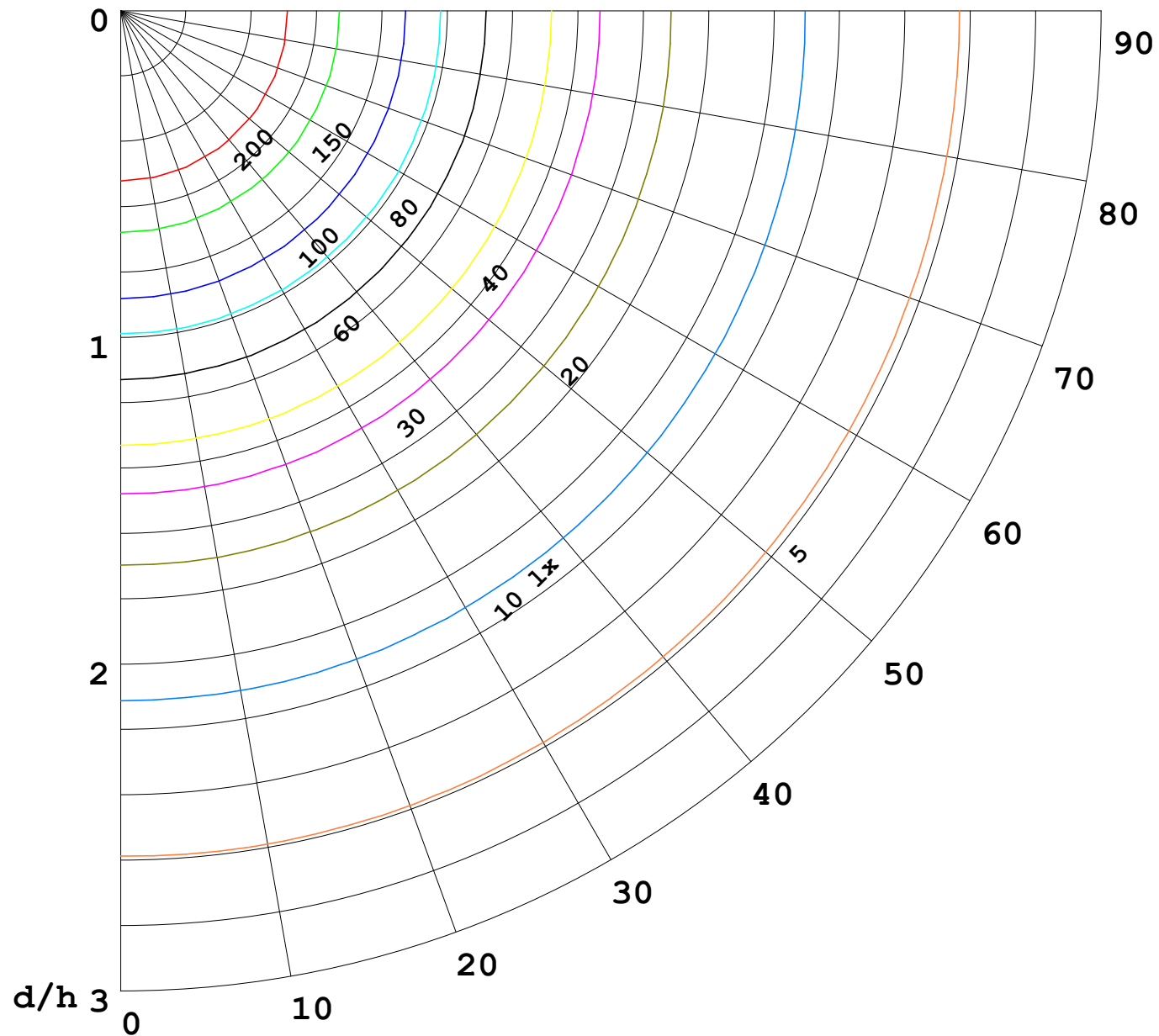
γ Range: 0 - 180DEG
γ Interval: 1.0DEG
Test System:EVERFINE GO-2000B_V1 SYSTEM V2.00.488
Humidity:65.0%
Test Distance:6.360m [K=1.0000]
Remarks:

I (cd)



1000 lm

$\kappa = 1$



F = 1000 lm
 K = 0.7
 Hcc = 0.8 m
 Hfc = 0.0 m
 Eave = 100 lx

	Pcc	Pw	Pfc
—————	70	50	30
—————	50	30	20

