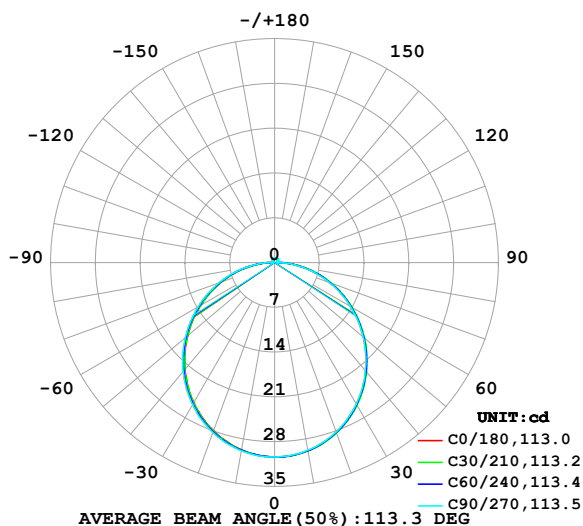


LUMINAIRE PHOTOMETRIC TEST REPORT

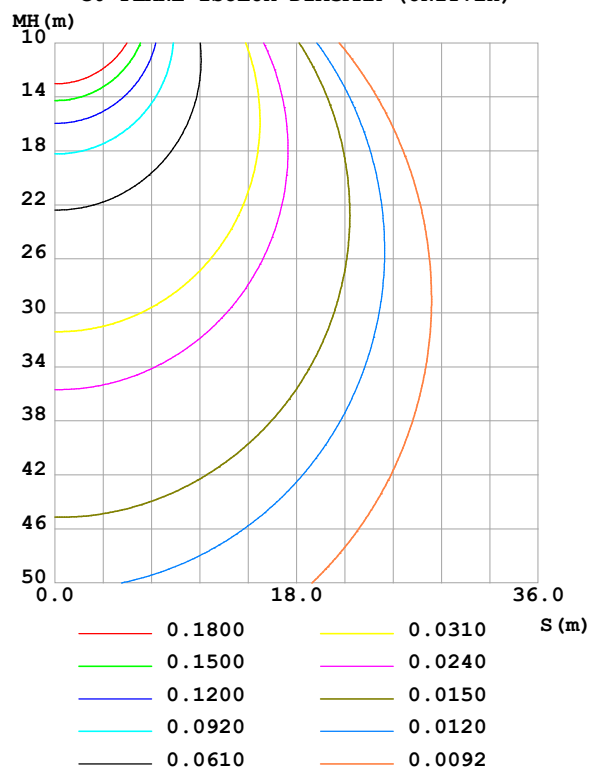
Test:U:24.00V I:0.2854A P:6.850W PF:1.000 Freq:0Hz Lamp Flux:93.0207x1 lm		
NAME: SF10-24V-5050-84-SPI-RGBW(4000K)-R	TYPE:	WEIGHT:
SPEC.:	DIM.: Length=1m	SERIAL No.:
MFR.: OLympia lighting	SUR.:	Shielding Angle:

DATA OF LAMP		PHOTOMETRIC DATA				Eff: 13.58 lm/W
MODEL	2835	I _{max} (cd)	30.38	S/MH(C0/180)	1.24	
NOMINAL POWER(W)		LOR(%)	100.0	S/MH(C90/270)	1.26	
RATED VOLTAGE(V)	24	TOTAL FLUX(lm)	93.021	η UP,DN(C0-180)	1.9,48.1	
NOMINAL FLUX(lm)	93.0207	CIE CLASS	DIRECT	η UP,DN(C180-360)	1.8,48.2	
LAMPS INSIDE	1	η up (%)	3.7	CIBSE SHR NOM	1.25	
TEST VOLTAGE(V)		η down (%)	96.3	CIBSE SHR MAX	1.35	

LUMINOUS INTENSITY DISTRIBUTION DIAGRAM



C0 PLANE ISOLUX DIAGRAM (UNIT:lx)



C Range: 0 - 360DEG
C Interval: 30.0DEG
Test Speed: HIGH
Temperature:25.3℃
Operators:
Test Date:2025-03-15

γ Range: 0 - 180DEG
γ Interval: 1.0DEG
Test System:EVERFINE GO-2000B_V1 SYSTEM V2.00.488
Humidity:65.0%
Test Distance:6.360m [K=1.0000]
Remarks:

ZONAL FLUX DIAGRAM

ZONAL FLUX DIAGRAM:

γ	C0	C45	C90	C135	C180	C225	C270	C315	γ	Φ zone	Φ total	%lum, lamp
10	29.90	29.88	29.80	29.73	29.73	29.78	29.88	29.92	0- 10	2.874	2.874	3.09,3.09
20	28.28	28.27	28.15	28.01	27.99	28.10	28.27	28.36	10- 20	8.221	11.09	11.9,11.9
30	25.70	25.68	25.52	25.33	25.29	25.45	25.68	25.80	20- 30	12.43	23.53	25.3,25.3
40	22.29	22.27	22.09	21.85	21.82	22.00	22.26	22.41	30- 40	14.97	38.50	41.4,41.4
50	18.28	18.25	18.06	17.79	17.75	17.94	18.23	18.41	40- 50	15.56	54.06	58.1,58.1
60	13.89	13.85	13.64	13.37	13.37	13.54	13.82	14.03	50- 60	14.23	68.29	73.4,73.4
70	9.367	9.310	9.096	8.839	8.844	8.996	9.268	9.488	60- 70	11.31	79.60	85.6,85.6
80	4.847	4.767	4.539	4.310	4.346	4.475	4.734	4.950	70- 80	7.263	86.87	93.4,93.4
90	1.070	0.8318	0.4453	0.6825	0.8243	0.7162	0.4879	0.9213	80- 90	2.714	89.58	96.3,96.3
100	0.4016	0.4380	0.4742	0.4606	0.3901	0.4395	0.4828	0.4360	90-100	0.5261	90.11	96.9,96.9
110	0.4446	0.4682	0.5031	0.5041	0.4247	0.4812	0.5234	0.4737	100-110	0.4859	90.59	97.4,97.4
120	0.4990	0.5043	0.5494	0.5446	0.4819	0.5245	0.5552	0.5156	110-120	0.4956	91.09	97.9,97.9
130	0.5478	0.5619	0.5957	0.5895	0.5307	0.5662	0.5841	0.5533	120-130	0.4879	91.58	98.4,98.4
140	0.5994	0.6138	0.6391	0.6330	0.5853	0.6124	0.6188	0.5925	130-140	0.4560	92.03	98.9,98.9
150	0.6454	0.6585	0.6853	0.6765	0.6398	0.6542	0.6563	0.6388	140-150	0.3979	92.43	99.4,99.4
160	0.6969	0.7017	0.7316	0.7213	0.6914	0.7017	0.6969	0.6881	150-160	0.3150	92.74	99.7,99.7
170	0.7200	0.7435	0.7634	0.7517	0.7315	0.7377	0.7316	0.7315	160-170	0.2046	92.95	99.9,99.9
180	0.7372	0.7550	0.7634	0.7590	0.7400	0.7550	0.7605	0.7576	170-180	0.0712	93.02	100,100
DEG	LUMINOUS INTENSITY:cd									UNIT:lm		

Conical surface Flux(90deg): 46.328 lm

%lum = 49.8%

%lamp = 49.8%

Conical surface Flux(130deg): 74.395 lm

%lum = 80.0%

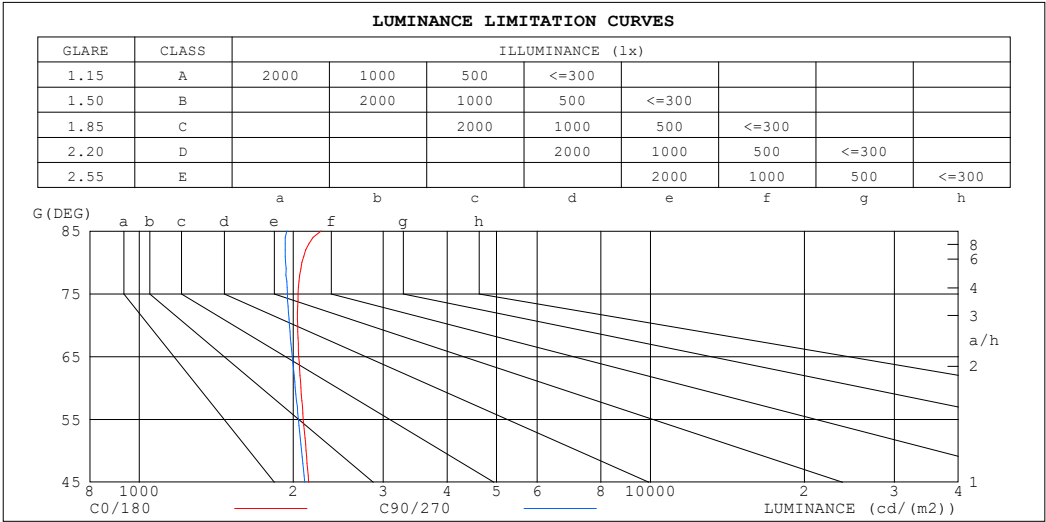
%lamp = 80.0%

C Range: 0 - 360DEG
 C Interval: 30.0DEG
 Test Speed: HIGH
 Temperature:25.3℃
 Operators:
 Test Date:2025-03-15

γ Range: 0 - 180DEG
 γ Interval: 1.0DEG
 Test System:EVERFINE GO-2000B_V1 SYSTEM V2.00.488
 Humidity:65.0%
 Test Distance:6.360m [K=1.0000]
 Remarks:

LUMINANCE LIMITATION CURVES

Test:U:24.00V I:0.2854A P:6.850W PF:1.000 Freq:0Hz Lamp Flux:93.0207x1 lm		
NAME: SF10-24V-5050-84-SPI-RGBW(4000K)-R	TYPE:	WEIGHT:
SPEC.:	DIM.: Length=1m	SERIAL No.:
MFR.: OLympia lighting	SUR.:	Shielding Angle:



LUMINANCE cd/(m2)		
G (DEG)	C0/180	C90/270
85	2266	1944
80	2080	1933
75	2044	1948
70	2041	1966
65	2051	1991
60	2070	2018
55	2093	2047
50	2119	2077
45	2144	2106

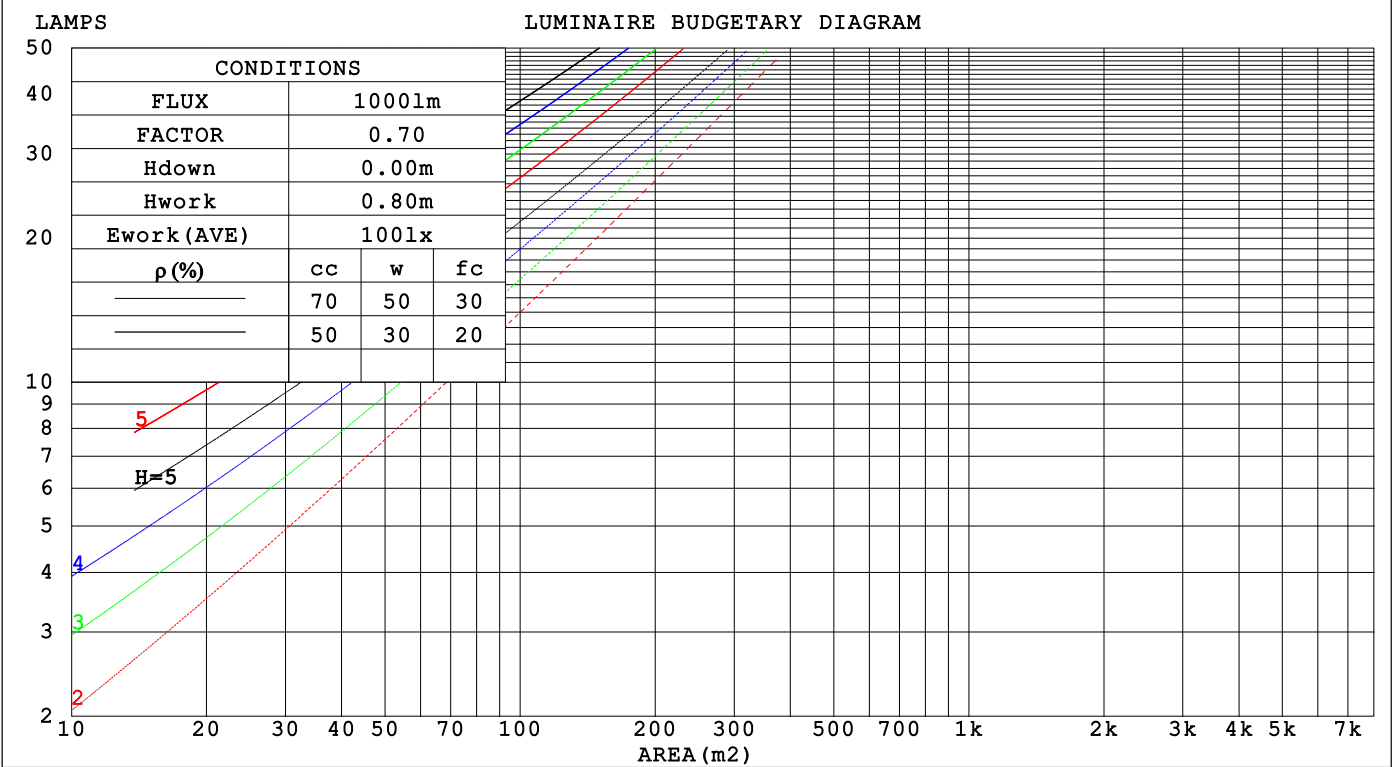
C Range: 0 - 360DEG
C Interval: 30.0DEG
Test Speed: HIGH
Temperature:25.3℃
Operators:
Test Date:2025-03-15

γ Range: 0 - 180DEG
γ Interval: 1.0DEG
Test System:EVERFINE GO-2000B_V1 SYSTEM V2.00.488
Humidity:65.0%
Test Distance:6.360m [K=1.0000]
Remarks:

CU AND LUMINAIRE BUDGETARY ESTIMATE DIAGRAM

Test:U:24.00V I:0.2854A P:6.850W PF:1.000 Freq:0Hz		
Lamp Flux:93.0207x1 lm		
NAME: SF10-24V-5050-84-SPI-RGBW(4000K)-R	TYPE:	WEIGHT:
SPEC.:	DIM.: Length=1m	SERIAL No.:
MFR.: OLYMPIA lighting	SUR.:	Shielding Angle:

pcc	80%			70%			50%			30%			10%			0
p _w	50%	30%	10%	50%	30%	10%	50%	30%	10%	50%	30%	10%	50%	30%	10%	0
p _{fc}	20%			20%			20%			20%			20%			0
RCR	RCR:Room Cavity Ratio															



C Range: 0 - 360DEG
C Interval: 30.0DEG
Test Speed: HIGH
Temperature:25.3℃
Operators:
Test Date:2025-03-15

γ Range: 0 - 180DEG
γ Interval: 1.0DEG
Test System:EVERFINE GO-2000B_V1 SYSTEM V2.00.488
Humidity:65.0%
Test Distance:6.360m [K=1.0000]
Remarks:

WEC AND CCEC

Test:U:24.00V I:0.2854A P:6.850W PF:1.000 Freq:0Hz Lamp Flux:93.0207x1 lm		
NAME: SF10-24V-5050-84-SPI-RGBW(4000K)-R	TYPE:	WEIGHT:
SPEC.:	DIM.: Length=1m	SERIAL No.:
MFR.: OLympia lighting	SUR.:	Shielding Angle:

pcc	80%			70%			50%			30%			10%			0														
pw	50%	30%	10%	50%	30%	10%	50%	30%	10%	50%	30%	10%	50%	30%	10%	0														
pfc	20%			20%			20%			20%			20%			0														
RCR	RCR:Room Cavity Ratio															Wall Exitance Coefficients(WEC)														
0.0																														
1.0	.325	.185	.059	.317	.181	.057	.302	.173	.055	.287	.166	.053	.274	.159	.051															
2.0	.301	.165	.051	.293	.162	.050	.280	.155	.048	.267	.150	.047	.255	.144	.046															
3.0	.276	.147	.044	.269	.144	.043	.257	.139	.042	.246	.135	.041	.235	.130	.040															
4.0	.253	.131	.039	.247	.129	.038	.236	.125	.037	.226	.121	.037	.217	.118	.036															
5.0	.233	.119	.034	.228	.117	.034	.218	.113	.033	.209	.110	.033	.200	.107	.032															
6.0	.215	.108	.031	.211	.106	.031	.202	.104	.030	.194	.101	.030	.186	.098	.029															
7.0	.200	.099	.028	.196	.098	.028	.188	.095	.027	.181	.093	.027	.174	.090	.027															
8.0	.187	.091	.026	.183	.090	.025	.176	.088	.025	.169	.086	.025	.163	.084	.024															
9.0	.175	.084	.024	.171	.083	.023	.165	.081	.023	.159	.080	.023	.153	.078	.022															
10.0	.164	.079	.022	.161	.078	.022	.155	.076	.021	.150	.074	.021	.144	.073	.021															

pcc	80%			70%			50%			30%			10%			0
pw	50%	30%	10%	50%	30%	10%	50%	30%	10%	50%	30%	10%	50%	30%	10%	0
pfc	20%			20%			20%			20%			20%			0
RCR	RCR:Room Cavity Ratio						Ceiling Cavity Exitance Coefficients (CCEC)									
0.0	.219	.219	.219	.187	.187	.187	.128	.128	.128	.073	.073	.073	.023	.023	.023	
1.0	.210	.184	.162	.180	.158	.139	.123	.109	.096	.071	.063	.056	.023	.020	.018	
2.0	.202	.160	.126	.173	.138	.109	.119	.096	.076	.068	.056	.044	.022	.018	.014	
3.0	.194	.143	.102	.167	.123	.089	.114	.086	.062	.066	.050	.037	.021	.016	.012	
4.0	.187	.130	.087	.160	.112	.075	.110	.078	.053	.064	.046	.031	.021	.015	.010	
5.0	.179	.120	.076	.154	.104	.066	.106	.072	.047	.061	.042	.028	.020	.014	.009	
6.0	.172	.111	.068	.148	.096	.059	.102	.068	.042	.059	.040	.025	.019	.013	.008	
7.0	.165	.105	.062	.142	.091	.054	.098	.064	.038	.057	.037	.023	.018	.012	.008	
8.0	.159	.099	.058	.136	.086	.050	.094	.060	.036	.055	.035	.021	.018	.012	.007	
9.0	.152	.094	.054	.131	.081	.047	.091	.057	.034	.053	.034	.020	.017	.011	.007	
10.0	.147	.090	.052	.126	.078	.045	.088	.055	.032	.051	.032	.019	.017	.011	.006	

C Range: 0 - 360DEG
C Interval: 30.0DEG
Test Speed: HIGH
Temperature:25.3℃
Operators:
Test Date:2025-03-15

γ Range: 0 - 180DEG
γ Interval: 1.0DEG
Test System:EVERFINE GO-2000B_V1 SYSTEM V2.00.488
Humidity:65.0%
Test Distance:6.360m [K=1.0000]
Remarks:

UGR(Unified Glare Rating) Table

Test:U:24.00V I:0.2854A P:6.850W PF:1.000 Freq:0Hz Lamp Flux:93.0207x1 lm											
NAME: SF10-24V-5050-84-SPI-RGBW(4000K)-R					TYPE:			WEIGHT:			
SPEC.:					DIM.: Length=1m			SERIAL No.:			
MFR.: OLympia lighting					SUR.:			Shielding Angle:			
ceiling/cavity	0.7	0.7	0.5	0.5	0.3	0.7	0.7	0.5	0.5	0.3	
walls	0.5	0.3	0.5	0.3	0.3	0.5	0.3	0.5	0.3	0.3	
working plane	0.2	0.2	0.2	0.2	0.2	0.2	0.2	0.2	0.2	0.2	
Room dimensions		Viewed crosswise					Viewed endwise				
x = 2H y = 2H	2H	22.7	24.2	23.0	24.5	24.8	22.6	24.1	22.9	24.4	24.7
	3H	24.4	25.8	24.8	26.1	26.4	24.3	25.7	24.6	26.0	26.3
	4H	25.2	26.5	25.6	26.8	27.2	25.0	26.3	25.4	26.7	27.0
	6H	25.9	27.1	26.2	27.4	27.8	25.6	26.9	26.0	27.2	27.6
	8H	26.1	27.3	26.5	27.7	28.0	25.9	27.1	26.3	27.4	27.8
	12H	26.3	27.5	26.7	27.8	28.2	26.0	27.2	26.4	27.5	27.9
4H	2H	23.4	24.7	23.7	25.0	25.3	23.3	24.6	23.6	24.9	25.2
	3H	25.3	26.4	25.7	26.8	27.2	25.1	26.3	25.6	26.7	27.0
	4H	26.2	27.2	26.6	27.6	28.0	26.0	27.1	26.5	27.5	27.9
	6H	27.0	27.9	27.4	28.3	28.8	26.8	27.7	27.2	28.1	28.6
	8H	27.3	28.2	27.8	28.6	29.1	27.1	28.0	27.5	28.4	28.9
	12H	27.6	28.4	28.1	28.9	29.3	27.3	28.1	27.8	28.6	29.1
8H	4H	26.5	27.4	27.0	27.8	28.3	26.4	27.2	26.8	27.7	28.2
	6H	27.5	28.2	28.0	28.7	29.2	27.3	28.0	27.8	28.5	29.0
	8H	28.0	28.6	28.5	29.1	29.6	27.7	28.4	28.3	28.9	29.4
	12H	28.4	28.9	28.9	29.4	30.0	28.1	28.6	28.6	29.2	29.7
12H	4H	26.5	27.3	27.0	27.8	28.3	26.4	27.2	26.9	27.7	28.2
	6H	27.6	28.3	28.1	28.7	29.3	27.4	28.1	27.9	28.6	29.1
	8H	28.1	28.7	28.7	29.2	29.7	27.9	28.5	28.4	29.0	29.5
Variations with the observer position at spacings(CIE Pub.117):											
S = 1.0H		+ 0.1 / - 0.2					+ 0.1 / - 0.2				
1.5H		+ 0.2 / - 0.3					+ 0.2 / - 0.3				
2.0H		+ 0.1 / - 0.3					+ 0.1 / - 0.3				

CIE Pub.117, 93.02 lm Total Lamp Luminous Flux Correct (8log(F/F0) = -8.3)
Area: 0.0135 m2

C Range: 0 - 360DEG
C Interval: 30.0DEG
Test Speed: HIGH
Temperature:25.3℃
Operators:
Test Date:2025-03-15

γ Range: 0 - 180DEG
γ Interval: 1.0DEG
Test System:EVERFINE GO-2000B_V1 SYSTEM V2.00.488
Humidity:65.0%
Test Distance:6.360m [K=1.0000]
Remarks:

UTILIZATION FACTORS TABLE

Test:U:24.00V I:0.2854A P:6.850W PF:1.000 Freq:0Hz Lamp Flux:93.0207x1 lm		
NAME: SF10-24V-5050-84-SPI-RGBW(4000K)-R	TYPE:	WEIGHT:
SPEC.:	DIM.: Length=1m	SERIAL No.:
MFR.: OLympia lighting	SUR.:	Shielding Angle:

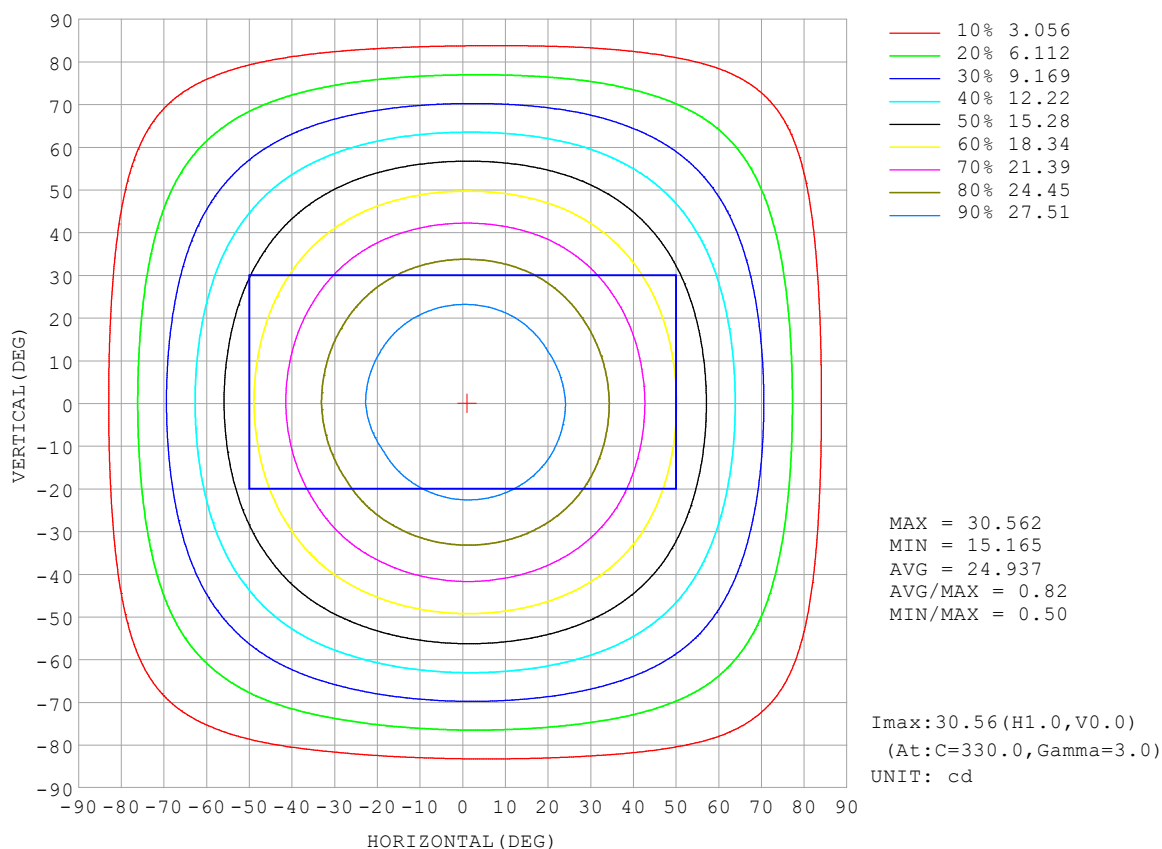
REFLECTANCE										
Ceiling	0.8	0.8	0.8	0.7	0.7	0.7	0.5	0.5	0.5	0
Walls	0.7	0.5	0.3	0.7	0.5	0.3	0.7	0.5	0.3	0
Working plane	0.2	0.2	0.2	0.2	0.2	0.2	0.2	0.2	0.2	0
ROOM INDEX	UTILIZATION FACTORS (PERCENT) $k(RI) \times RCR = 5$									
$k = 0.60$	56	44	37	55	44	37	53	43	36	30
0.80	65	54	46	64	53	46	62	52	45	38
1.00	74	62	55	72	62	54	70	63	54	46
1.25	81	70	62	79	69	62	76	67	61	53
1.50	86	75	68	84	74	68	80	72	66	58
2.00	93	84	77	91	82	76	87	80	74	65
2.50	97	89	82	94	87	81	90	84	79	70
3.00	100	93	87	98	91	86	93	88	83	74
4.00	104	98	93	102	96	92	97	92	89	78
5.00	107	102	97	104	99	95	99	95	92	81
ROOM INDEX	UF(total)									Direct
According to DIN EN 13032-2 2004			Suspended					SHRNOM = 1.25		

C Range: 0 - 360DEG
 C Interval: 30.0DEG
 Test Speed: HIGH
 Temperature: 25.3°C
 Operators:
 Test Date: 2025-03-15

γ Range: 0 - 180DEG
 γ Interval: 1.0DEG
 Test System: EVERFINE GO-2000B_V1 SYSTEM V2.00.488
 Humidity: 65.0%
 Test Distance: 6.360m [K=1.0000]
 Remarks:

ISOCANDELA DIAGRAM

Test:U:24.00V I:0.2854A P:6.850W PF:1.000 Freq:0Hz Lamp Flux:93.0207x1 lm		
NAME: SF10-24V-5050-84-SPI-RGBW(4000K)-R	TYPE:	WEIGHT:
SPEC.:	DIM.: Length=1m	SERIAL No.:
MFR.: OLympia lighting	SUR.:	Shielding Angle:

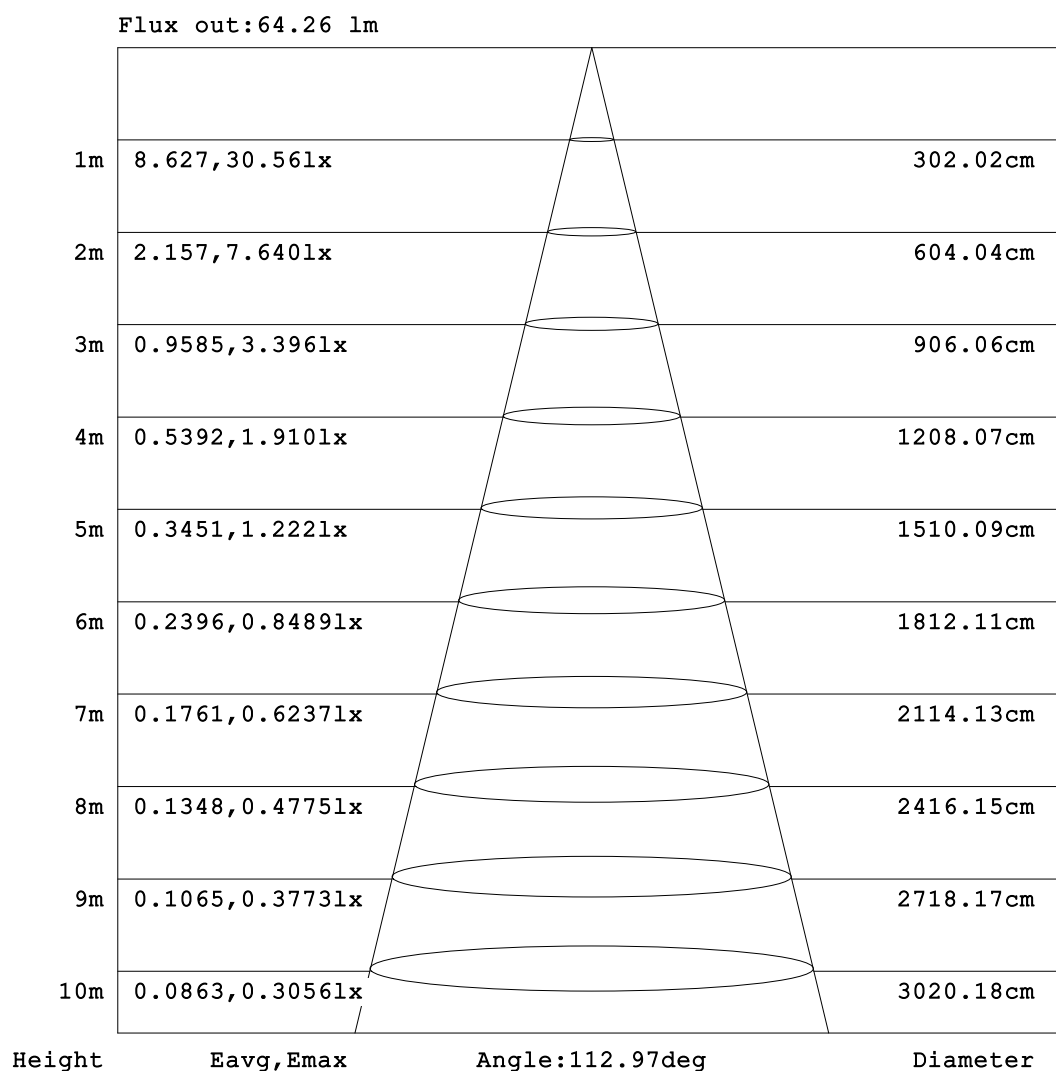


C Range: 0 - 360DEG
C Interval: 30.0DEG
Test Speed: HIGH
Temperature:25.3℃
Operators:
Test Date:2025-03-15

γ Range: 0 - 180DEG
γ Interval: 1.0DEG
Test System:EVERFINE GO-2000B_V1 SYSTEM V2.00.488
Humidity:65.0%
Test Distance:6.360m [K=1.0000]
Remarks:

AAI Figure

Test:U:24.00V I:0.2854A P:6.850W PF:1.000 Freq:0Hz Lamp Flux:93.0207x1 lm		
NAME: SF10-24V-5050-84-SPI-RGBW(4000K)-R	TYPE:	WEIGHT:
SPEC.:	DIM.: Length=1m	SERIAL No.:
MFR.: OLympia lighting	SUR.:	Shielding Angle:



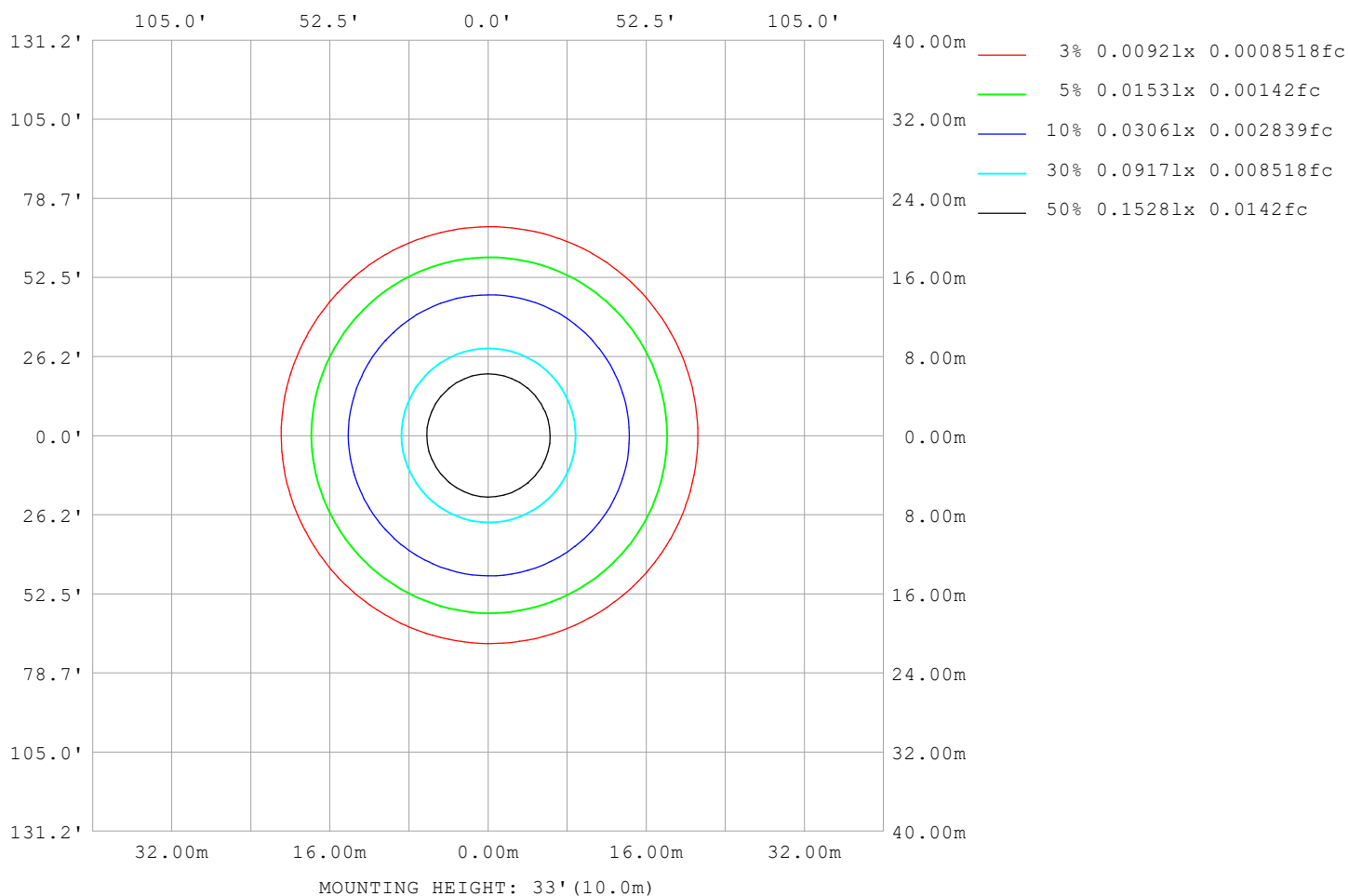
Note:The Curves indicate the illuminated area and the average illumination when the luminaire is at different distance.

C Range: 0 - 360DEG
C Interval: 30.0DEG
Test Speed: HIGH
Temperature:25.3℃
Operators:
Test Date:2025-03-15

γ Range: 0 - 180DEG
γ Interval: 1.0DEG
Test System:EVERFINE GO-2000B_V1 SYSTEM V2.00.488
Humidity:65.0%
Test Distance:6.360m [K=1.0000]
Remarks:

ISOLUX DIAGRAM

Test:U:24.00V I:0.2854A P:6.850W PF:1.000 Freq:0Hz Lamp Flux:93.0207x1 lm		
NAME: SF10-24V-5050-84-SPI-RGBW(4000K)-R	TYPE:	WEIGHT:
SPEC.:	DIM.: Length=1m	SERIAL No.:
MFR.: OLympia lighting	SUR.:	Shielding Angle:



C Range: 0 - 360DEG
C Interval: 30.0DEG
Test Speed: HIGH
Temperature: 25.3°C
Operators:
Test Date: 2025-03-15

γ Range: 0 - 180DEG
γ Interval: 1.0DEG
Test System: EVERFINE GO-2000B_V1 SYSTEM V2.00.488
Humidity: 65.0%
Test Distance: 6.360m [K=1.0000]
Remarks:

LED Avg.L Report

Test:U:24.00V I:0.2854A P:6.850W PF:1.000 Freq:0Hz Lamp Flux:93.0207x1 lm		
NAME: SF10-24V-5050-84-SPI-RGBW(4000K)-R	TYPE:	WEIGHT:
SPEC.:	DIM.: Length=1m	SERIAL No.:
MFR.: OLympia lighting	SUR.:	Shielding Angle:

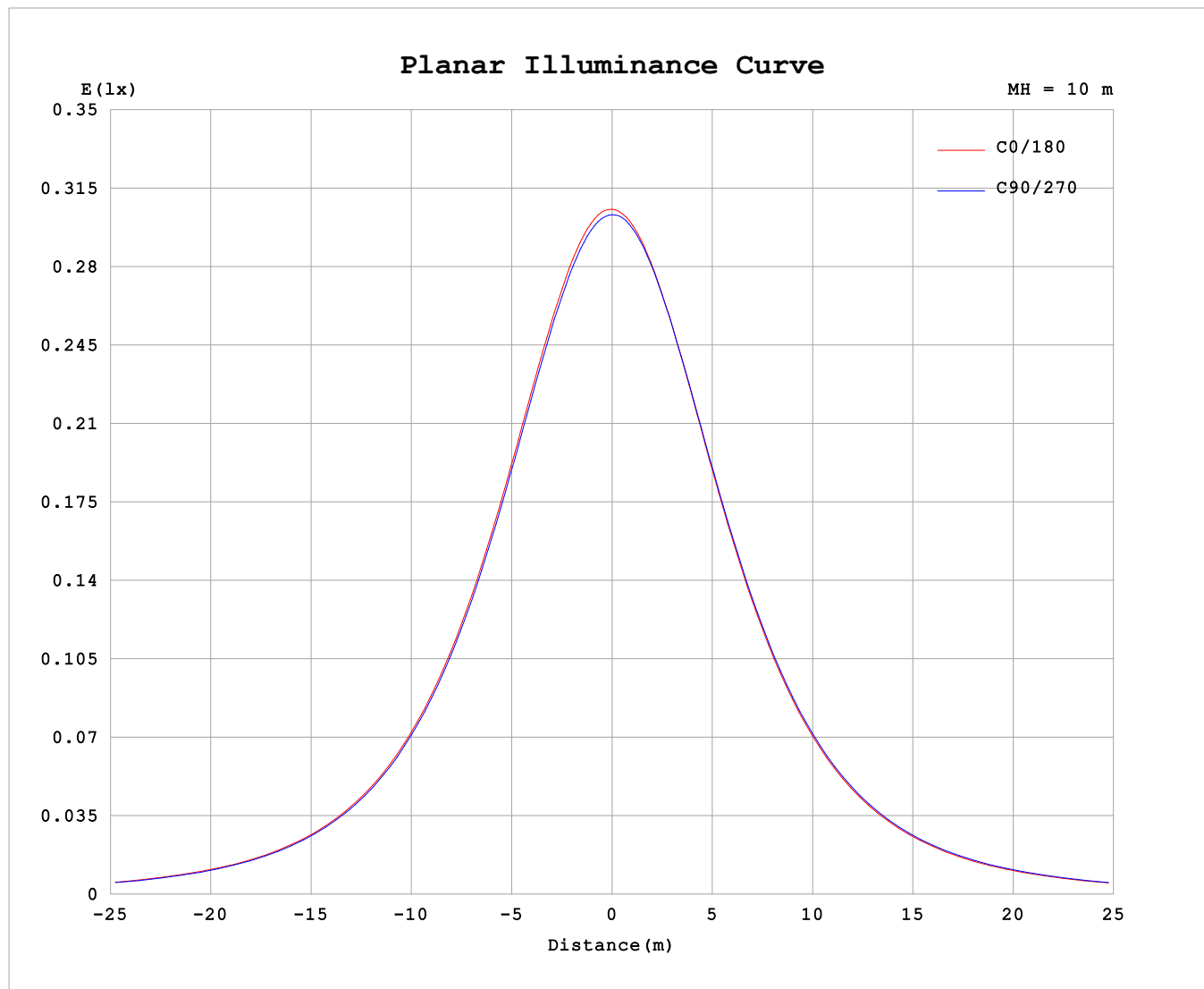
AvgL	cd/m2
L_0~180 (65) av	1993
L_0~180 (75) av	1958
L_0~180 (85) av	2064
L_90~270 (65) av	2009
L_90~270 (75) av	1976
L_90~270 (85) av	2023
L_45 (65) av	2004
L_45 (75) av	1972
L_45 (85) av	2036

Standard: GB/T 29293-2012

C Range: 0 - 360DEG
C Interval: 30.0DEG
Test Speed: HIGH
Temperature:25.3℃
Operators:
Test Date:2025-03-15

γ Range: 0 - 180DEG
γ Interval: 1.0DEG
Test System:EVERFINE GO-2000B_V1 SYSTEM V2.00.488
Humidity:65.0%
Test Distance:6.360m [K=1.0000]
Remarks:

Planar Illuminance Curve



C Range: 0 - 360DEG
C Interval: 30.0DEG
Test Speed: HIGH
Temperature: 25.3 °C
Operators:
Test Date: 2025-03-15

γ Range: 0 - 180DEG
 γ Interval: 1.0DEG
Test System: EVERFINE GO-2000B_V1 SYSTEM V2.00.488
Humidity: 65.0%
Test Distance: 6.360m [K=1.0000]
Remarks:

LUMINOUS DISTRIBUTION INTENSITY DATA

Test:U:24.00V I:0.2854A P:6.850W PF:1.000 Freq:0Hz Lamp Flux:93.0207x1 lm																	
NAME: SF10-24V-5050-84-SPI-RGBW(4000K)-R									TYPE:						WEIGHT:		
SPEC.:									DIM.: Length=1m						SERIAL No.:		
MFR.: OLYMPIA lighting									SUR.:						Shielding Angle:		

Table--1

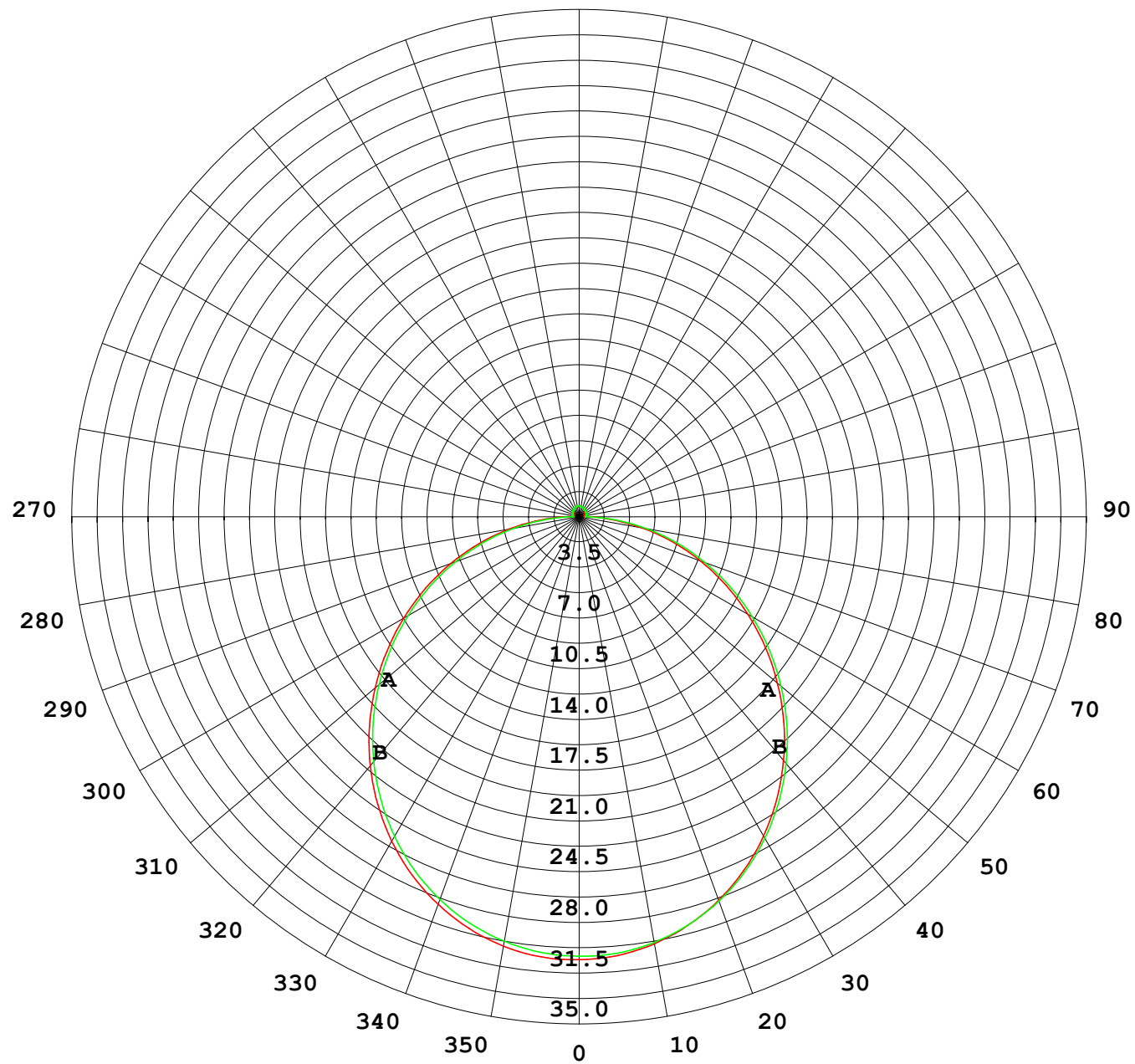
UNIT: cd

C (DEG) γ (DEG)	0	30	60	90	120	150	180	210	240	270	300	330						
0	30.4	30.4	30.4	30.4	30.4	30.4	30.4	30.4	30.4	30.4	30.4	30.4						
5	30.3	30.3	30.3	30.2	30.2	30.2	30.2	30.2	30.2	30.3	30.3	30.3						
10	29.9	29.9	29.9	29.8	29.8	29.7	29.7	29.8	29.8	29.9	29.9	29.9						
15	29.2	29.2	29.2	29.1	29.0	29.0	29.0	29.0	29.1	29.2	29.3	29.3						
20	28.3	28.3	28.2	28.2	28.0	28.0	28.0	28.0	28.2	28.3	28.3	28.4						
25	27.1	27.1	27.0	27.0	26.8	26.7	26.8	26.8	27.0	27.1	27.2	27.2						
30	25.7	25.7	25.6	25.5	25.4	25.3	25.3	25.4	25.5	25.7	25.8	25.8						
35	24.1	24.1	24.0	23.9	23.7	23.6	23.6	23.7	23.9	24.1	24.2	24.2						
40	22.3	22.3	22.2	22.1	21.9	21.8	21.8	21.9	22.1	22.3	22.4	22.4						
45	20.3	20.4	20.2	20.1	19.9	19.8	19.8	19.9	20.1	20.3	20.5	20.5						
50	18.3	18.3	18.2	18.1	17.8	17.7	17.8	17.8	18.1	18.2	18.4	18.4						
55	16.1	16.2	16.0	15.9	15.7	15.6	15.6	15.7	15.9	16.1	16.3	16.2						
60	13.9	13.9	13.8	13.6	13.4	13.3	13.4	13.4	13.7	13.8	14.0	14.0						
65	11.6	11.7	11.5	11.4	11.2	11.1	11.1	11.2	11.4	11.5	11.8	11.8						
70	9.37	9.39	9.23	9.10	8.87	8.80	8.84	8.89	9.10	9.27	9.49	9.49						
75	7.10	7.13	6.95	6.82	6.60	6.55	6.59	6.63	6.83	6.99	7.21	7.22						
80	4.85	4.86	4.67	4.54	4.33	4.29	4.35	4.38	4.57	4.73	4.94	4.96						
85	2.65	2.64	2.41	2.29	2.09	2.12	2.21	2.19	2.32	2.47	2.68	2.72						
90	1.07	0.98	0.69	0.45	0.60	0.76	0.82	0.79	0.64	0.49	0.80	1.04						
95	0.42	0.43	0.44	0.46	0.45	0.43	0.37	0.40	0.45	0.46	0.45	0.41						
100	0.40	0.44	0.44	0.47	0.46	0.46	0.39	0.40	0.48	0.48	0.47	0.40						
105	0.42	0.45	0.46	0.49	0.48	0.48	0.41	0.42	0.50	0.50	0.50	0.41						
110	0.44	0.47	0.46	0.50	0.50	0.51	0.42	0.44	0.52	0.52	0.52	0.43						
115	0.47	0.48	0.47	0.53	0.52	0.52	0.46	0.46	0.54	0.54	0.53	0.46						
120	0.50	0.51	0.50	0.55	0.54	0.55	0.48	0.49	0.56	0.56	0.55	0.48						
125	0.52	0.54	0.53	0.57	0.56	0.57	0.50	0.51	0.57	0.57	0.56	0.50						
130	0.55	0.57	0.56	0.60	0.58	0.60	0.53	0.54	0.60	0.58	0.58	0.52						
135	0.57	0.59	0.59	0.62	0.60	0.62	0.56	0.56	0.61	0.60	0.61	0.54						
140	0.60	0.62	0.61	0.64	0.62	0.64	0.59	0.59	0.63	0.62	0.62	0.56						
145	0.62	0.64	0.63	0.66	0.65	0.66	0.61	0.61	0.66	0.64	0.65	0.59						
150	0.65	0.67	0.65	0.69	0.67	0.69	0.64	0.63	0.68	0.66	0.66	0.61						
155	0.67	0.69	0.67	0.71	0.69	0.71	0.67	0.66	0.70	0.68	0.69	0.64						
160	0.70	0.71	0.70	0.73	0.71	0.73	0.69	0.68	0.72	0.70	0.71	0.67						
165	0.71	0.73	0.71	0.75	0.72	0.75	0.72	0.70	0.74	0.72	0.73	0.69						
170	0.72	0.75	0.73	0.76	0.74	0.76	0.73	0.72	0.75	0.73	0.75	0.72						
175	0.73	0.75	0.75	0.76	0.75	0.76	0.74	0.74	0.76	0.75	0.76	0.74						
180	0.74	0.75	0.76	0.76	0.76	0.76	0.74	0.75	0.76	0.76	0.76	0.75						

C Range: 0 - 360DEG
C Interval: 30.0DEG
Test Speed: HIGH
Temperature:25.3℃
Operators:
Test Date:2025-03-15

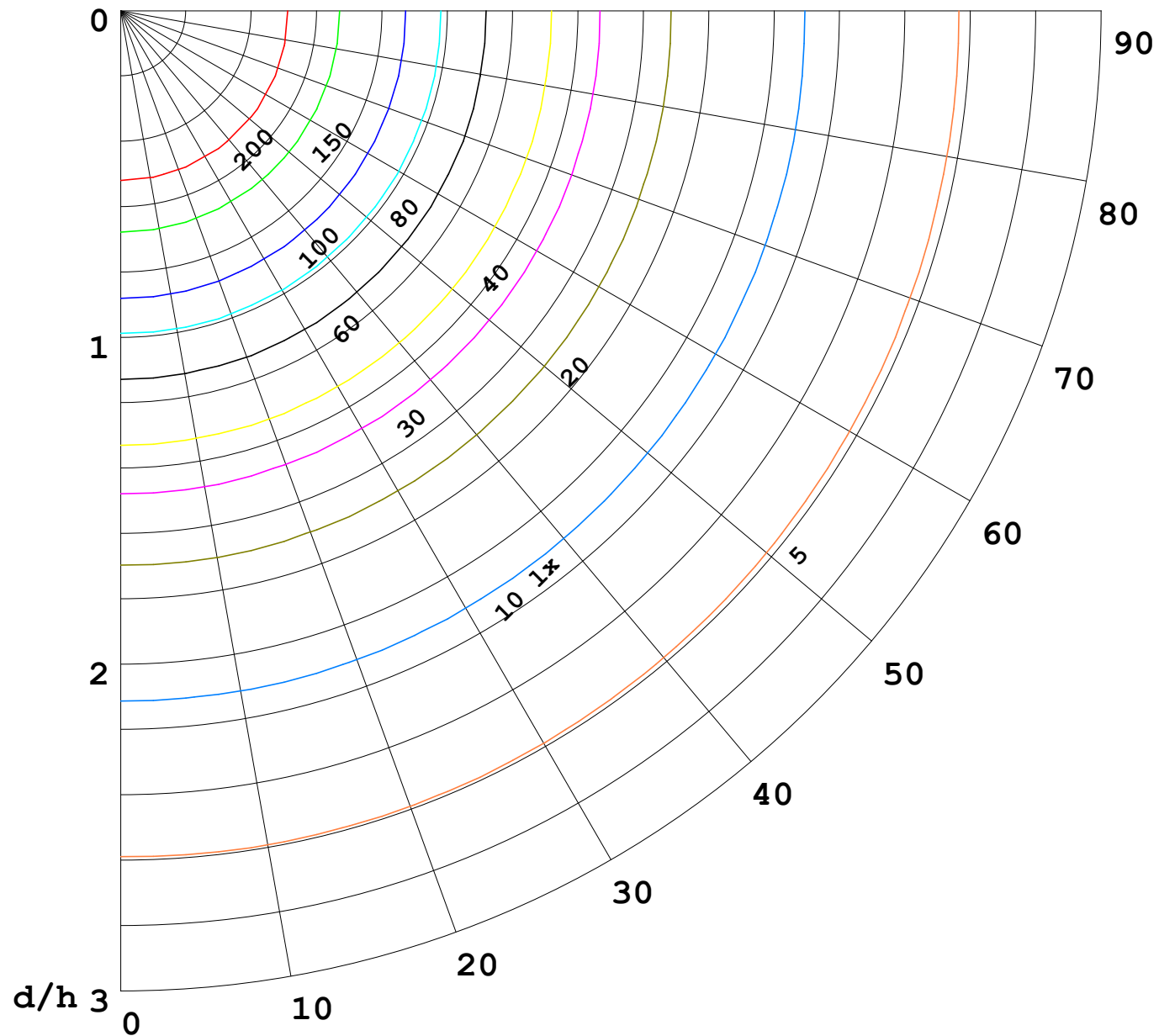
γ Range: 0 - 180DEG
γ Interval: 1.0DEG
Test System:EVERFINE GO-2000B_V1 SYSTEM V2.00.488
Humidity:65.0%
Test Distance:6.360m [K=1.0000]
Remarks:

I (cd)



1000 lm

$\kappa = 1$



F = 1000 lm
 K = 0.7
 Hcc = 0.8 m
 Hfc = 0.0 m
 Eave = 100 lx

	Pcc	Pw	Pfc
—————	70	50	30
—————	50	30	20

