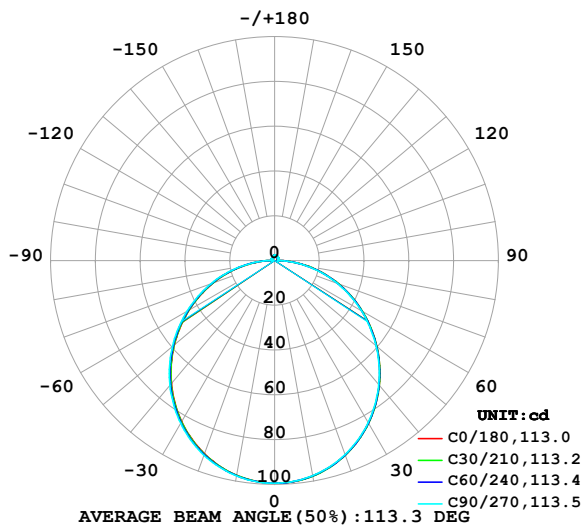


LUMINAIRE PHOTOMETRIC TEST REPORT

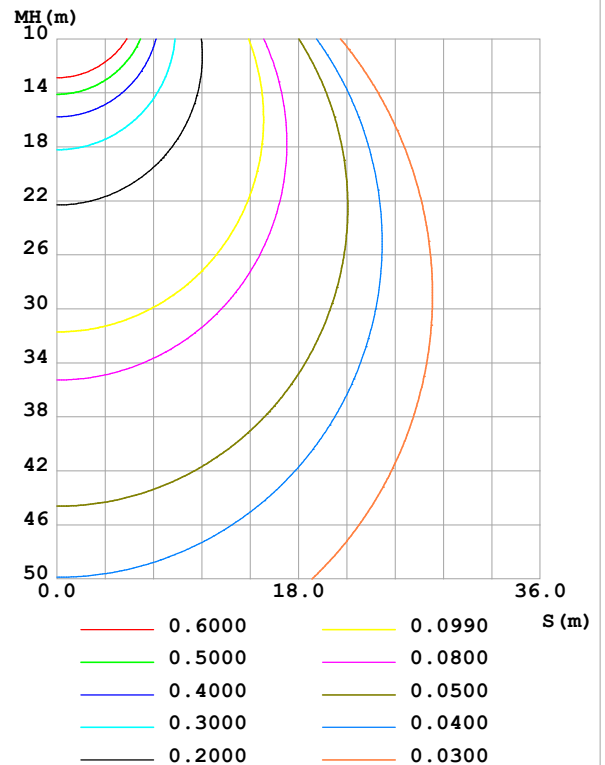
Test:U:24.00V I:0.5218A P:12.52W PF:1.000 Freq:0Hz Lamp Flux:303.858x1 lm		
NAME: SF10-24V-5050-84-SPI-RGBW(2700K)-W	TYPE:	WEIGHT:
SPEC.:	DIM.: Length=1m	SERIAL No.:
MFR.: OLympia lighting	SUR.:	Shielding Angle:

DATA OF LAMP		PHOTOMETRIC DATA Eff: 24.26 lm/W			
MODEL	2835	I _{max} (cd)	99.43	S/MH(C0/180)	1.24
NOMINAL POWER(W)		LOR(%)	100.0	S/MH(C90/270)	1.26
RATED VOLTAGE(V)	24	TOTAL FLUX(lm)	303.86	η UP,DN(C0-180)	1.8,48.1
NOMINAL FLUX(lm)	303.858	CIE CLASS	DIRECT	η UP,DN(C180-360)	1.7,48.3
LAMPS INSIDE	1	η up (%)	3.6	CIBSE SHR NOM	1.25
TEST VOLTAGE(V)		η down (%)	96.4	CIBSE SHR MAX	1.35

LUMINOUS INTENSITY DISTRIBUTION DIAGRAM



C0 PLANE ISOLUX DIAGRAM (UNIT:lx)



C Range: 0 - 360DEG
C Interval: 30.0DEG
Test Speed: HIGH
Temperature: 25.3 °C
Operators:
Test Date: 2025-03-15

γ Range: 0 - 180DEG
γ Interval: 1.0DEG
Test System: EVERFINE GO-2000B_V1 SYSTEM V2.00.488
Humidity: 65.0%
Test Distance: 6.360m [K=1.0000]
Remarks:

ZONAL FLUX DIAGRAM

ZONAL FLUX DIAGRAM:

γ	C0	C45	C90	C135	C180	C225	C270	C315	γ	Φ zone	Φ total	%lum,lamp
10	97.68	97.72	97.57	97.38	97.41	97.49	97.68	97.83	0- 10	9.403	9.403	3.09,3.09
20	92.38	92.42	92.16	91.85	91.77	92.05	92.45	92.64	10- 20	26.90	36.30	11.9,11.9
30	83.86	83.89	83.62	83.15	83.06	83.41	83.94	84.22	20- 30	40.69	77.00	25.3,25.3
40	72.70	72.68	72.34	71.80	71.71	72.10	72.78	73.11	30- 40	48.99	126.0	41.5,41.5
50	59.54	59.52	59.13	58.53	58.44	58.84	59.57	59.98	40- 50	50.92	176.9	58.2,58.2
60	45.19	45.14	44.72	44.08	44.05	44.42	45.12	45.64	50- 60	46.58	223.5	73.6,73.6
70	30.37	30.26	29.82	29.20	29.24	29.54	30.21	30.77	60- 70	37.01	260.5	85.7,85.7
80	15.62	15.42	14.91	14.35	14.47	14.72	15.35	15.95	70- 80	23.74	284.2	93.5,93.5
90	3.319	2.609	1.409	2.243	2.788	2.279	1.393	2.793	80- 90	8.823	293.1	96.4,96.4
100	1.323	1.422	1.496	1.456	1.200	1.299	1.400	1.299	90-100	1.621	294.7	97,97
110	1.491	1.551	1.577	1.601	1.353	1.448	1.547	1.442	100-110	1.516	296.2	97.5,97.5
120	1.652	1.689	1.695	1.736	1.508	1.589	1.666	1.570	110-120	1.560	297.8	98,98
130	1.808	1.803	1.854	1.878	1.676	1.738	1.787	1.709	120-130	1.535	299.3	98.5,98.5
140	1.949	1.929	2.004	2.015	1.843	1.898	1.920	1.850	130-140	1.432	300.7	99,99
150	2.082	2.064	2.168	2.169	2.019	2.061	2.070	2.003	140-150	1.255	302.0	99.4,99.4
160	2.212	2.233	2.322	2.301	2.189	2.218	2.220	2.175	150-160	0.9957	303.0	99.7,99.7
170	2.307	2.364	2.414	2.402	2.310	2.348	2.353	2.330	160-170	0.6497	303.6	99.9,99.9
180	2.370	2.415	2.446	2.431	2.370	2.416	2.440	2.429	170-180	0.2275	303.9	100,100
DEG	LUMINOUS INTENSITY:cd									UNIT:lm		

Conical surface Flux(90deg): 151.61 lm

%lum = 49.9%

%lamp = 49.9%

Conical surface Flux(130deg): 243.46 lm

%lum = 80.1%

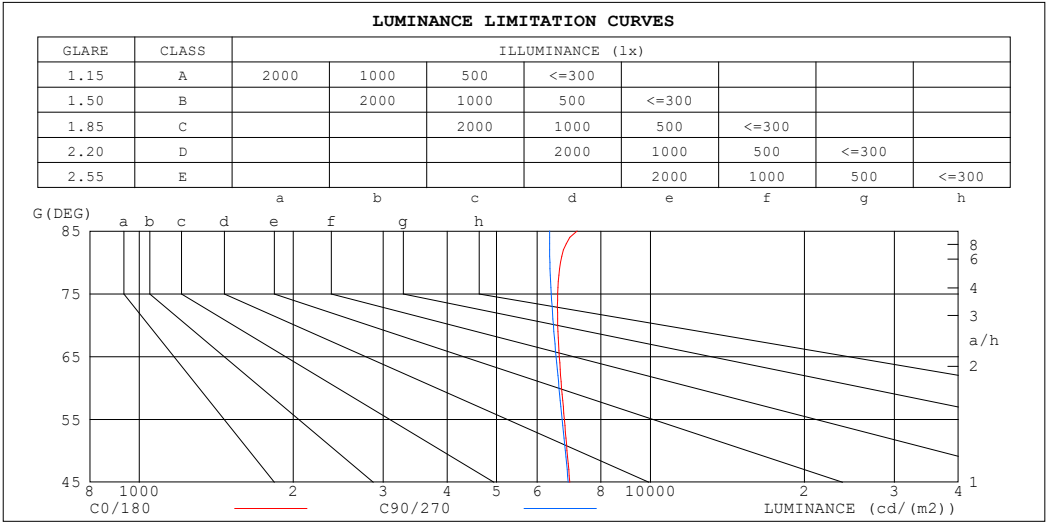
%lamp = 80.1%

C Range: 0 - 360DEG
 C Interval: 30.0DEG
 Test Speed: HIGH
 Temperature:25.3℃
 Operators:
 Test Date:2025-03-15

γ Range: 0 - 180DEG
 γ Interval: 1.0DEG
 Test System:EVERFINE GO-2000B_V1 SYSTEM V2.00.488
 Humidity:65.0%
 Test Distance:6.360m [K=1.0000]
 Remarks:

LUMINANCE LIMITATION CURVES

Test:U:24.00V I:0.5218A P:12.52W PF:1.000 Freq:0Hz Lamp Flux:303.858x1 lm		
NAME: SF10-24V-5050-84-SPI-RGBW(2700K)-W	TYPE:	WEIGHT:
SPEC.:	DIM.: Length=1m	SERIAL No.:
MFR.: OLympia lighting	SUR.:	Shielding Angle:



LUMINANCE cd/(m2)		
G (DEG)	C0/180	C90/270
85	7184	6348
80	6667	6357
75	6580	6396
70	6584	6456
65	6631	6535
60	6700	6623
55	6781	6716
50	6868	6811
45	6952	6904

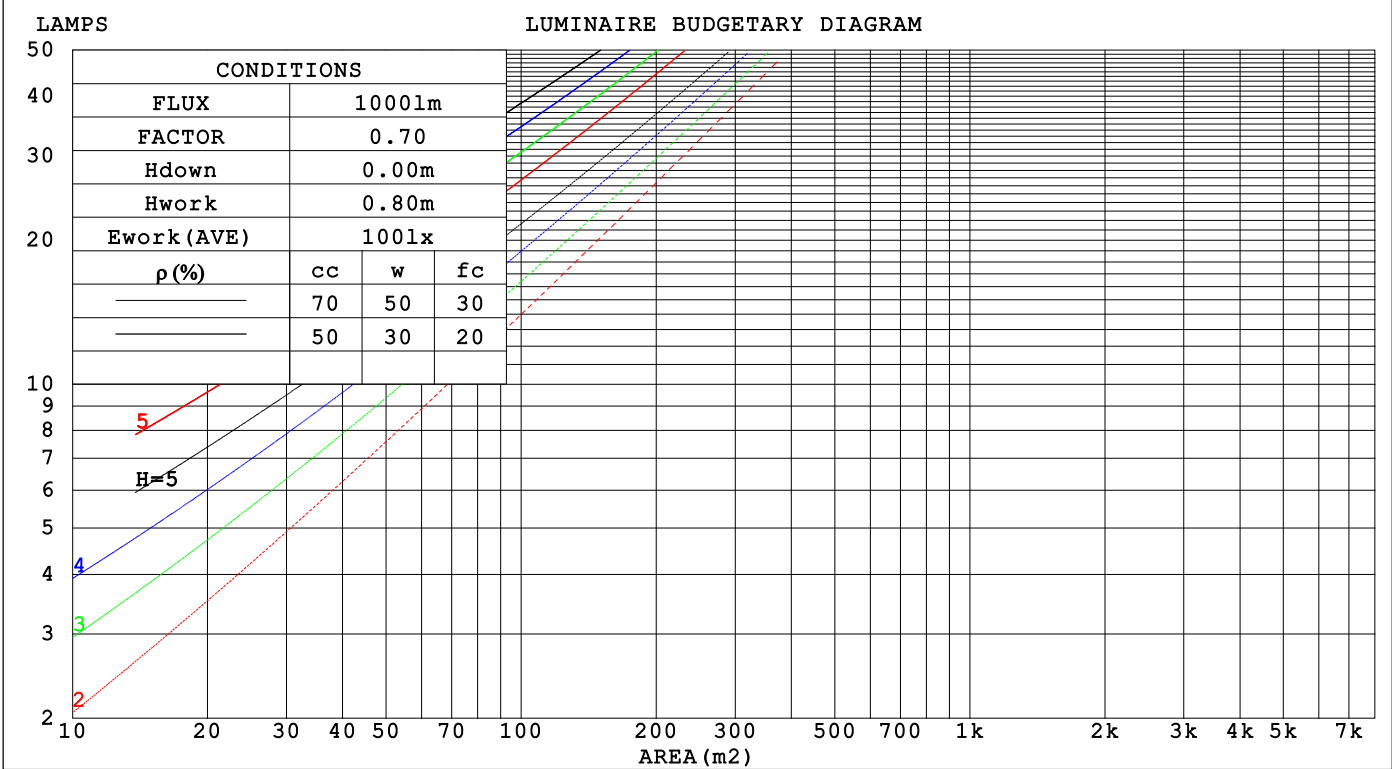
C Range: 0 - 360DEG
C Interval: 30.0DEG
Test Speed: HIGH
Temperature:25.3℃
Operators:
Test Date:2025-03-15

γ Range: 0 - 180DEG
γ Interval: 1.0DEG
Test System:EVERFINE GO-2000B_V1 SYSTEM V2.00.488
Humidity:65.0%
Test Distance:6.360m [K=1.0000]
Remarks:

CU AND LUMINAIRE BUDGETARY ESTIMATE DIAGRAM

Test:U:24.00V I:0.5218A P:12.52W PF:1.000 Freq:0Hz		
Lamp Flux:303.858x1 lm		
NAME: SF10-24V-5050-84-SPI-RGBW(2700K)-W	TYPE:	WEIGHT:
SPEC.:	DIM.: Length=1m	SERIAL No.:
MFR.: OLYMPIA lighting	SUR.:	Shielding Angle:

pcc	80%			70%			50%			30%			10%			0
pw	50%	30%	10%	50%	30%	10%	50%	30%	10%	50%	30%	10%	50%	30%	10%	0
pfc	20%			20%			20%			20%			20%			0
RCR	RCR:Room Cavity Ratio			Coefficients of Utilization(CU)												
0.0	1.18	1.18	1.18	1.15	1.15	1.15	1.09	1.09	1.09	1.04	1.04	1.04	.99	.99	.99	.96
1.0	1.02	.98	.94	.90	.95	.92	.95	.91	.88	.90	.87	.85	.86	.84	.82	.79
2.0	.89	.82	.76	.86	.80	.74	.82	.77	.72	.78	.74	.70	.75	.71	.68	.65
3.0	.78	.69	.63	.76	.68	.62	.72	.66	.60	.69	.63	.59	.66	.61	.57	.55
4.0	.69	.60	.53	.67	.59	.52	.64	.57	.51	.61	.55	.50	.59	.53	.49	.47
5.0	.61	.52	.45	.60	.51	.45	.57	.50	.44	.55	.48	.43	.53	.47	.42	.40
6.0	.55	.46	.39	.54	.45	.39	.52	.44	.38	.50	.43	.38	.48	.42	.37	.35
7.0	.50	.41	.35	.49	.40	.35	.47	.39	.34	.45	.39	.34	.44	.38	.33	.31
8.0	.45	.37	.31	.45	.36	.31	.43	.36	.30	.41	.35	.30	.40	.34	.30	.28
9.0	.42	.33	.28	.41	.33	.28	.40	.32	.27	.38	.32	.27	.37	.31	.27	.25
10.0	.38	.30	.25	.38	.30	.25	.37	.30	.25	.35	.29	.24	.34	.28	.24	.22



C Range: 0 - 360DEG

C Interval: 30.0DEG

Test Speed: HIGH

Temperature:25.3℃

Operators:

Test Date:2025-03-15

γ Range: 0 - 180DEG

γ Interval: 1.0DEG

Test System:EVERFINE GO-2000B_V1 SYSTEM V2.00.488

Humidity:65.0%

Test Distance:6.360m [K=1.0000]

Remarks:

WEC AND CCEC

Test:U:24.00V I:0.5218A P:12.52W PF:1.000 Freq:0Hz Lamp Flux:303.858x1 lm		
NAME: SF10-24V-5050-84-SPI-RGBW(2700K)-W	TYPE:	WEIGHT:
SPEC.:	DIM.: Length=1m	SERIAL No.:
MFR.: OLympia lighting	SUR.:	Shielding Angle:

pcc	80%			70%			50%			30%			10%			0
pw	50%	30%	10%	50%	30%	10%	50%	30%	10%	50%	30%	10%	50%	30%	10%	0
pfc	20%			20%			20%			20%			20%			0
RCR	RCR:Room Cavity Ratio						Wall Exitance Coefficients(WEC)									
0.0																
1.0	.325	.185	.059	.317	.181	.057	.302	.173	.055	.288	.166	.053	.275	.159	.051	
2.0	.301	.165	.051	.293	.162	.050	.280	.156	.048	.267	.150	.047	.255	.144	.046	
3.0	.276	.147	.044	.269	.144	.043	.257	.139	.042	.246	.135	.041	.235	.130	.040	
4.0	.253	.131	.039	.247	.129	.038	.236	.125	.037	.226	.122	.037	.217	.118	.036	
5.0	.233	.119	.034	.228	.117	.034	.218	.114	.033	.209	.110	.033	.201	.107	.032	
6.0	.215	.108	.031	.211	.107	.031	.202	.104	.030	.194	.101	.030	.186	.098	.029	
7.0	.200	.099	.028	.196	.098	.028	.188	.095	.027	.181	.093	.027	.174	.090	.027	
8.0	.187	.091	.026	.183	.090	.025	.176	.088	.025	.169	.086	.025	.163	.084	.024	
9.0	.175	.084	.024	.171	.083	.023	.165	.082	.023	.159	.080	.023	.153	.078	.022	
10.0	.164	.079	.022	.161	.078	.022	.155	.076	.021	.150	.074	.021	.144	.073	.021	

pcc	80%			70%			50%			30%			10%			0
pw	50%	30%	10%	50%	30%	10%	50%	30%	10%	50%	30%	10%	50%	30%	10%	0
pfc	20%			20%			20%			20%			20%			0
RCR	RCR:Room Cavity Ratio						Ceiling Cavity Exitance Coefficients (CCEC)									
0.0	.218	.218	.218	.186	.186	.186	.127	.127	.127	.073	.073	.073	.023	.023	.023	
1.0	.209	.183	.160	.179	.157	.138	.122	.108	.095	.070	.063	.056	.023	.020	.018	
2.0	.201	.159	.124	.172	.137	.108	.118	.095	.075	.068	.055	.044	.022	.018	.014	
3.0	.193	.142	.101	.166	.122	.088	.114	.085	.061	.066	.050	.036	.021	.016	.012	
4.0	.186	.129	.085	.159	.111	.074	.109	.078	.052	.063	.045	.031	.020	.015	.010	
5.0	.178	.119	.075	.153	.103	.065	.105	.072	.046	.061	.042	.027	.020	.014	.009	
6.0	.171	.110	.067	.147	.095	.058	.101	.067	.041	.059	.039	.024	.019	.013	.008	
7.0	.164	.103	.061	.141	.090	.053	.097	.063	.038	.057	.037	.022	.018	.012	.007	
8.0	.157	.098	.057	.135	.085	.049	.094	.059	.035	.055	.035	.021	.018	.011	.007	
9.0	.151	.093	.053	.130	.080	.046	.090	.057	.033	.053	.033	.020	.017	.011	.007	
10.0	.145	.088	.051	.125	.077	.044	.087	.054	.031	.051	.032	.019	.016	.010	.006	

C Range: 0 - 360DEG
C Interval: 30.0DEG
Test Speed: HIGH
Temperature:25.3℃
Operators:
Test Date:2025-03-15

γ Range: 0 - 180DEG
γ Interval: 1.0DEG
Test System:EVERFINE GO-2000B_V1 SYSTEM V2.00.488
Humidity:65.0%
Test Distance:6.360m [K=1.0000]
Remarks:

UGR(Unified Glare Rating) Table

Test:U:24.00V I:0.5218A P:12.52W PF:1.000 Freq:0Hz Lamp Flux:303.858x1 lm											
NAME: SF10-24V-5050-84-SPI-RGBW(2700K)-W						TYPE:		WEIGHT:			
SPEC.:						DIM.: Length=1m		SERIAL No.:			
MFR.: OLympia lighting						SUR.:		Shielding Angle:			
ceiling/cavity	0.7	0.7	0.5	0.5	0.3	0.7	0.7	0.5	0.5	0.3	
walls	0.5	0.3	0.5	0.3	0.3	0.5	0.3	0.5	0.3	0.3	
working plane	0.2	0.2	0.2	0.2	0.2	0.2	0.2	0.2	0.2	0.2	
Room dimensions		Viewed crosswise					Viewed endwise				
x = 2H y = 2H	22.7	24.2	23.0	24.4	24.7	22.6	24.1	22.9	24.4	24.7	
	3H	24.4	25.8	24.7	26.1	26.4	24.3	25.7	24.7	26.0	26.3
	4H	25.1	26.4	25.5	26.8	27.1	25.0	26.4	25.4	26.7	27.0
	6H	25.8	27.0	26.2	27.4	27.7	25.7	26.9	26.0	27.2	27.6
	8H	26.0	27.2	26.4	27.6	27.9	25.9	27.1	26.3	27.4	27.8
	12H	26.2	27.4	26.6	27.7	28.1	26.1	27.2	26.5	27.6	27.9
4H	2H	23.3	24.6	23.7	24.9	25.3	23.3	24.6	23.6	24.9	25.2
	3H	25.2	26.4	25.6	26.7	27.1	25.2	26.3	25.6	26.7	27.0
	4H	26.1	27.2	26.5	27.6	28.0	26.0	27.1	26.5	27.5	27.9
	6H	26.9	27.8	27.4	28.3	28.7	26.8	27.7	27.2	28.1	28.6
	8H	27.2	28.1	27.7	28.5	29.0	27.1	28.0	27.6	28.4	28.9
	12H	27.5	28.3	28.0	28.8	29.2	27.3	28.1	27.8	28.6	29.1
8H	4H	26.5	27.3	26.9	27.8	28.2	26.4	27.3	26.8	27.7	28.1
	6H	27.4	28.2	27.9	28.6	29.1	27.3	28.1	27.8	28.5	29.0
	8H	27.9	28.5	28.4	29.0	29.5	27.7	28.4	28.3	28.9	29.4
	12H	28.3	28.8	28.8	29.3	29.9	28.1	28.6	28.6	29.2	29.7
12H	4H	26.5	27.3	27.0	27.7	28.2	26.4	27.2	26.9	27.7	28.2
	6H	27.5	28.2	28.0	28.7	29.2	27.4	28.1	27.9	28.6	29.1
	8H	28.0	28.6	28.6	29.1	29.7	27.9	28.5	28.4	29.0	29.5
Variations with the observer position at spacings(CIE Pub.117):											
S = 1.0H	+ 0.1 / - 0.2					+ 0.1 / - 0.2					
1.5H	+ 0.2 / - 0.3					+ 0.2 / - 0.3					
2.0H	+ 0.1 / - 0.3					+ 0.1 / - 0.3					

CIE Pub.117, 303.9 lm Total Lamp Luminous Flux Correct (8log(F/F0) = -4.1)
Area: 0.0135 m2

C Range: 0 - 360DEG
C Interval: 30.0DEG
Test Speed: HIGH
Temperature:25.3℃
Operators:
Test Date:2025-03-15

γ Range: 0 - 180DEG
γ Interval: 1.0DEG
Test System:EVERFINE GO-2000B_V1 SYSTEM V2.00.488
Humidity:65.0%
Test Distance:6.360m [K=1.0000]
Remarks:

UTILIZATION FACTORS TABLE

Test:U:24.00V I:0.5218A P:12.52W PF:1.000 Freq:0Hz Lamp Flux:303.858x1 lm		
NAME: SF10-24V-5050-84-SPI-RGBW(2700K)-W	TYPE:	WEIGHT:
SPEC.:	DIM.: Length=1m	SERIAL No.:
MFR.: OLympia lighting	SUR.:	Shielding Angle:

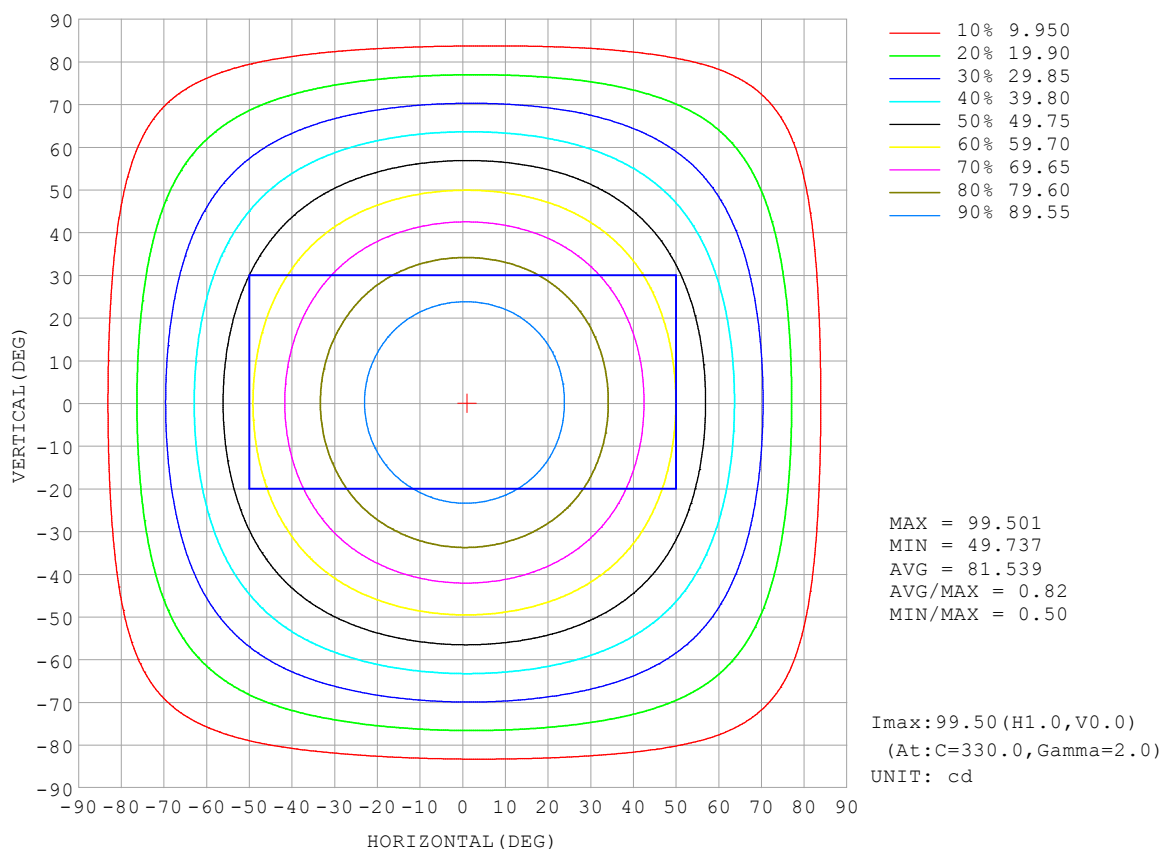
REFLECTANCE										
Ceiling	0.8	0.8	0.8	0.7	0.7	0.7	0.5	0.5	0.5	0
Walls	0.7	0.5	0.3	0.7	0.5	0.3	0.7	0.5	0.3	0
Working plane	0.2	0.2	0.2	0.2	0.2	0.2	0.2	0.2	0.2	0
ROOM INDEX	UTILIZATION FACTORS (PERCENT) $k(RI) \times RCR = 5$									
$k = 0.60$	56	44	37	55	44	37	53	43	37	30
0.80	66	54	46	64	53	46	62	52	45	38
1.00	74	62	55	72	62	54	70	63	54	46
1.25	81	70	63	79	69	62	76	67	61	53
1.50	86	76	68	84	74	68	80	72	66	58
2.00	93	84	77	91	82	76	87	80	74	66
2.50	97	89	82	95	87	81	90	84	79	70
3.00	100	93	87	98	91	86	93	88	83	74
4.00	104	98	93	102	96	92	97	92	89	79
5.00	107	102	97	104	100	96	99	95	92	82
ROOM INDEX	UF (total)									Direct
According to DIN EN 13032-2 2004			Suspended					SHRNOM = 1.25		

C Range: 0 - 360DEG
 C Interval: 30.0DEG
 Test Speed: HIGH
 Temperature: 25.3°C
 Operators:
 Test Date: 2025-03-15

γ Range: 0 - 180DEG
 γ Interval: 1.0DEG
 Test System: EVERFINE GO-2000B_V1 SYSTEM V2.00.488
 Humidity: 65.0%
 Test Distance: 6.360m [K=1.0000]
 Remarks:

ISOCANDELA DIAGRAM

Test:U:24.00V I:0.5218A P:12.52W PF:1.000 Freq:0Hz Lamp Flux:303.858x1 lm		
NAME: SF10-24V-5050-84-SPI-RGBW(2700K)-W	TYPE:	WEIGHT:
SPEC.:	DIM.: Length=1m	SERIAL No.:
MFR.: OLympia lighting	SUR.:	Shielding Angle:

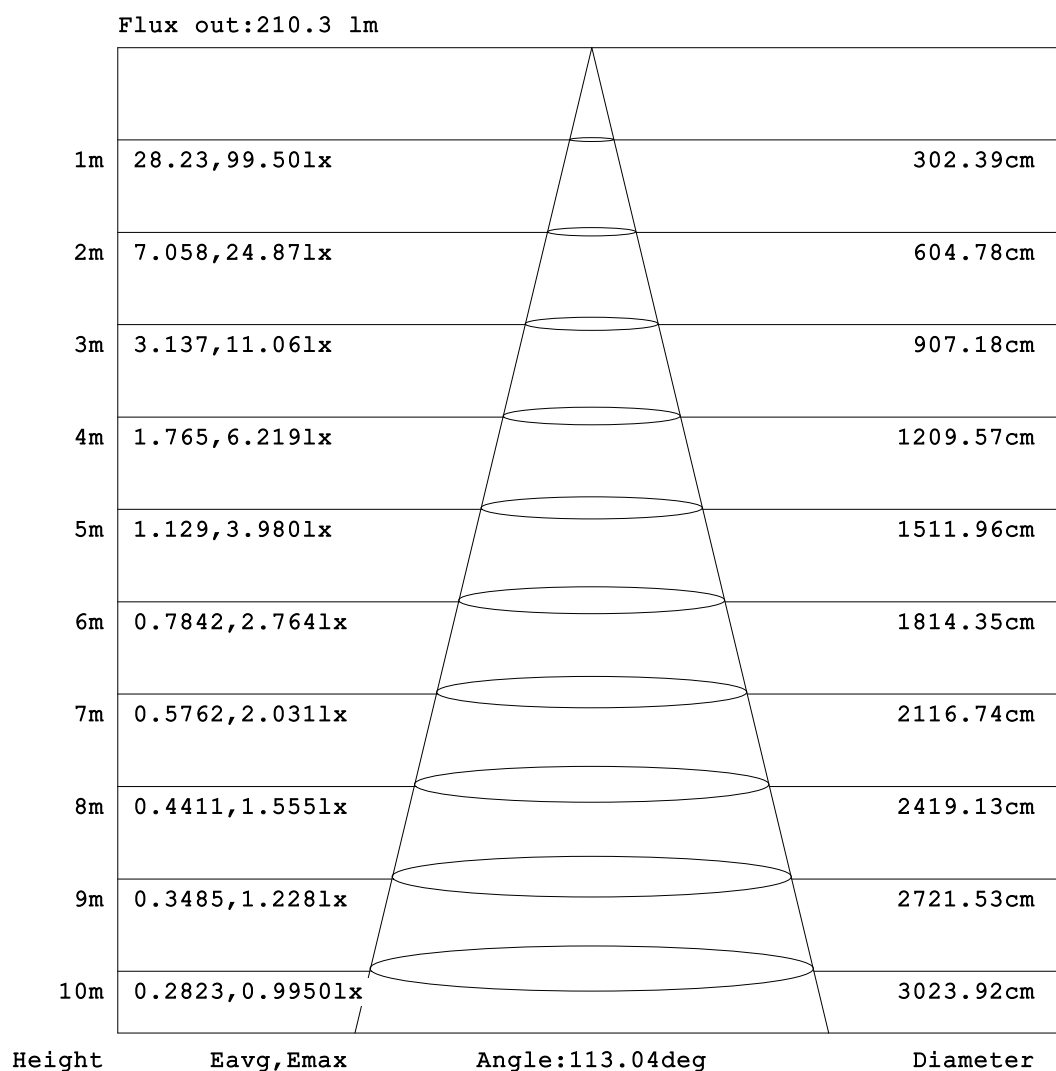


C Range: 0 - 360DEG
C Interval: 30.0DEG
Test Speed: HIGH
Temperature:25.3℃
Operators:
Test Date:2025-03-15

γ Range: 0 - 180DEG
γ Interval: 1.0DEG
Test System:EVERFINE GO-2000B_V1 SYSTEM V2.00.488
Humidity:65.0%
Test Distance:6.360m [K=1.0000]
Remarks:

AAI Figure

Test:U:24.00V I:0.5218A P:12.52W PF:1.000 Freq:0Hz Lamp Flux:303.858x1 lm		
NAME: SF10-24V-5050-84-SPI-RGBW(2700K)-W	TYPE:	WEIGHT:
SPEC.:	DIM.: Length=1m	SERIAL No.:
MFR.: OLympia lighting	SUR.:	Shielding Angle:



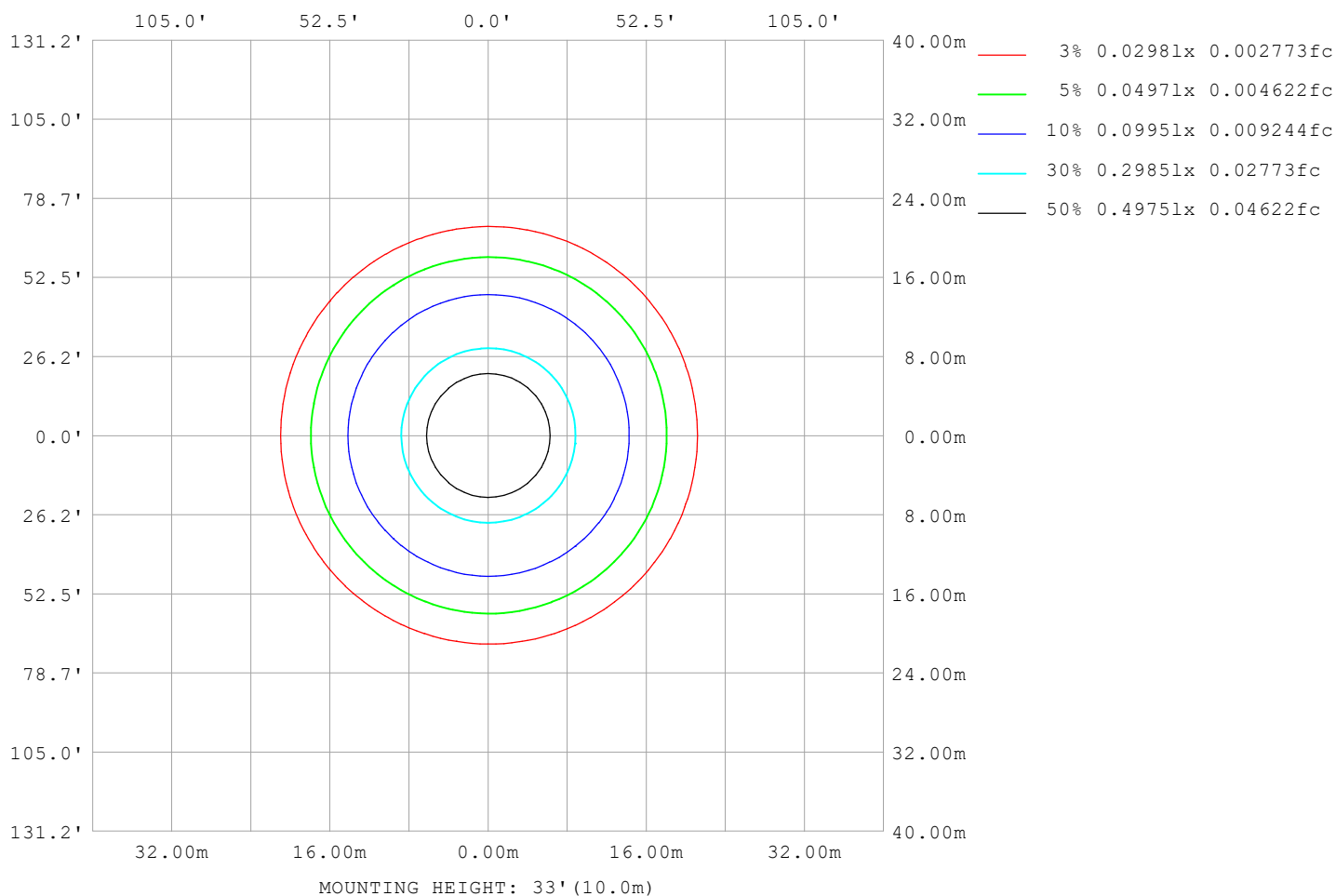
Note:The Curves indicate the illuminated area and the average illumination when the luminaire is at different distance.

C Range: 0 - 360DEG
C Interval: 30.0DEG
Test Speed: HIGH
Temperature:25.3℃
Operators:
Test Date:2025-03-15

γ Range: 0 - 180DEG
γ Interval: 1.0DEG
Test System:EVERFINE GO-2000B_V1 SYSTEM V2.00.488
Humidity:65.0%
Test Distance:6.360m [K=1.0000]
Remarks:

ISOLUX DIAGRAM

Test:U:24.00V I:0.5218A P:12.52W PF:1.000 Freq:0Hz Lamp Flux:303.858x1 lm		
NAME: SF10-24V-5050-84-SPI-RGBW(2700K)-W	TYPE:	WEIGHT:
SPEC.:	DIM.: Length=1m	SERIAL No.:
MFR.: OLympia lighting	SUR.:	Shielding Angle:



C Range: 0 - 360DEG
C Interval: 30.0DEG
Test Speed: HIGH
Temperature: 25.3°C
Operators:
Test Date: 2025-03-15

γ Range: 0 - 180DEG
γ Interval: 1.0DEG
Test System: EVERFINE GO-2000B_V1 SYSTEM V2.00.488
Humidity: 65.0%
Test Distance: 6.360m [K=1.0000]
Remarks:

LED Avg.L Report

Test:U:24.00V I:0.5218A P:12.52W PF:1.000 Freq:0Hz Lamp Flux:303.858x1 lm		
NAME: SF10-24V-5050-84-SPI-RGBW(2700K)-W	TYPE:	WEIGHT:
SPEC.:	DIM.: Length=1m	SERIAL No.:
MFR.: OLympia lighting	SUR.:	Shielding Angle:

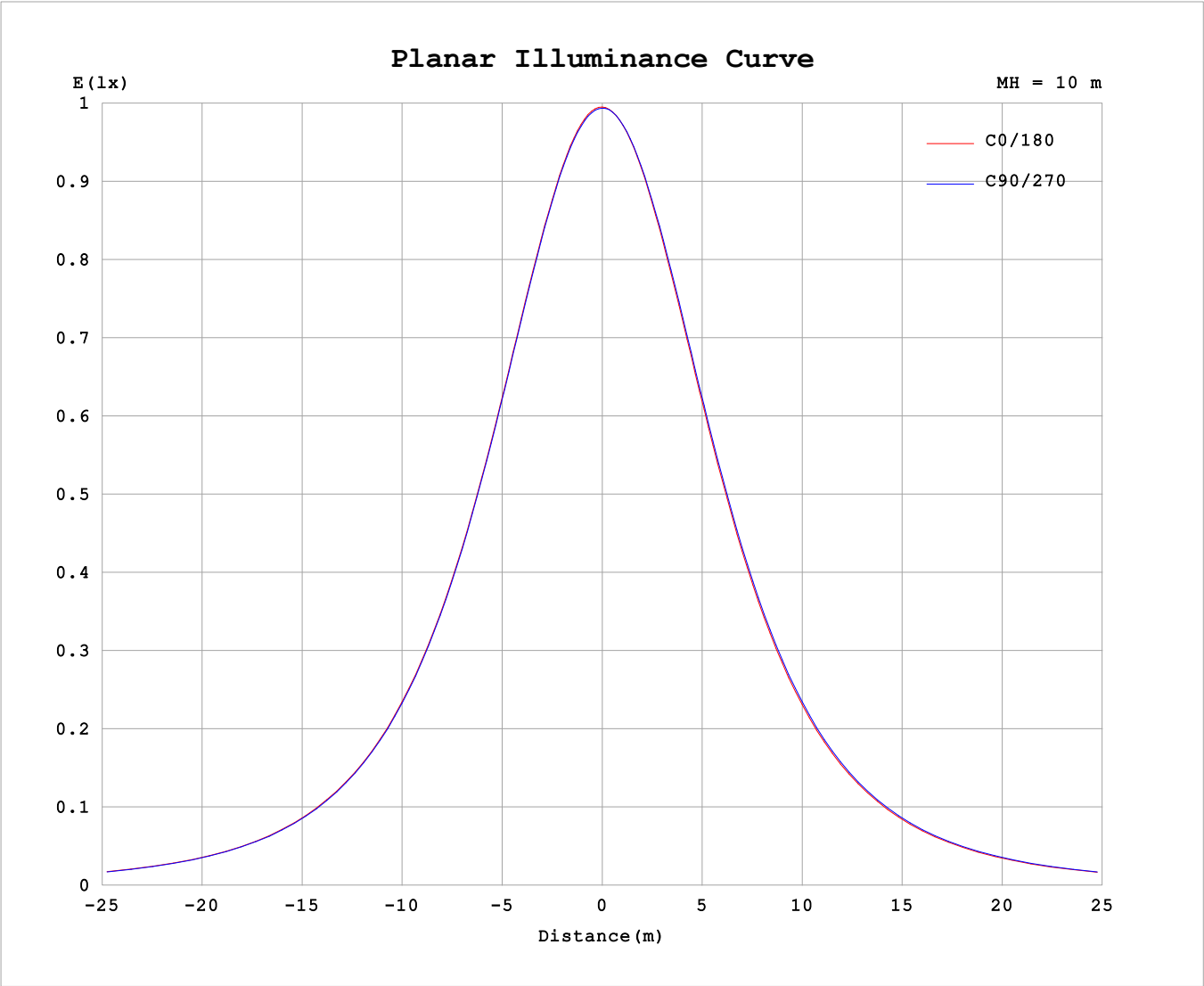
AvgL	cd/m2
L_0~180 (65) av	6525
L_0~180 (75) av	6411
L_0~180 (85) av	6729
L_90~270 (65) av	6571
L_90~270 (75) av	6457
L_90~270 (85) av	6555
L_45 (65) av	6557
L_45 (75) av	6443
L_45 (85) av	6624

Standard: GB/T 29293-2012

C Range: 0 - 360DEG
C Interval: 30.0DEG
Test Speed: HIGH
Temperature:25.3℃
Operators:
Test Date:2025-03-15

γ Range: 0 - 180DEG
γ Interval: 1.0DEG
Test System:EVERFINE GO-2000B_V1 SYSTEM V2.00.488
Humidity:65.0%
Test Distance:6.360m [K=1.0000]
Remarks:

Planar Illuminance Curve



C Range: 0 - 360DEG	γ Range: 0 - 180DEG
C Interval: 30.0DEG	γ Interval: 1.0DEG
Test Speed: HIGH	Test System:EVERFINE GO-2000B_V1 SYSTEM V2.00.488
Temperature:25.3℃	Humidity:65.0%
Operators:	Test Distance:6.360m [K=1.0000]
Test Date:2025-03-15	Remarks:

LUMINOUS DISTRIBUTION INTENSITY DATA

Test:U:24.00V I:0.5218A P:12.52W PF:1.000 Freq:0Hz Lamp Flux:303.858x1 lm		
NAME: SF10-24V-5050-84-SPI-RGBW(2700K)-W	TYPE:	WEIGHT:
SPEC.:	DIM.: Length=1m	SERIAL No.:
MFR.: Olym pia lighting	SUR.:	Shielding Angle:

Table--1

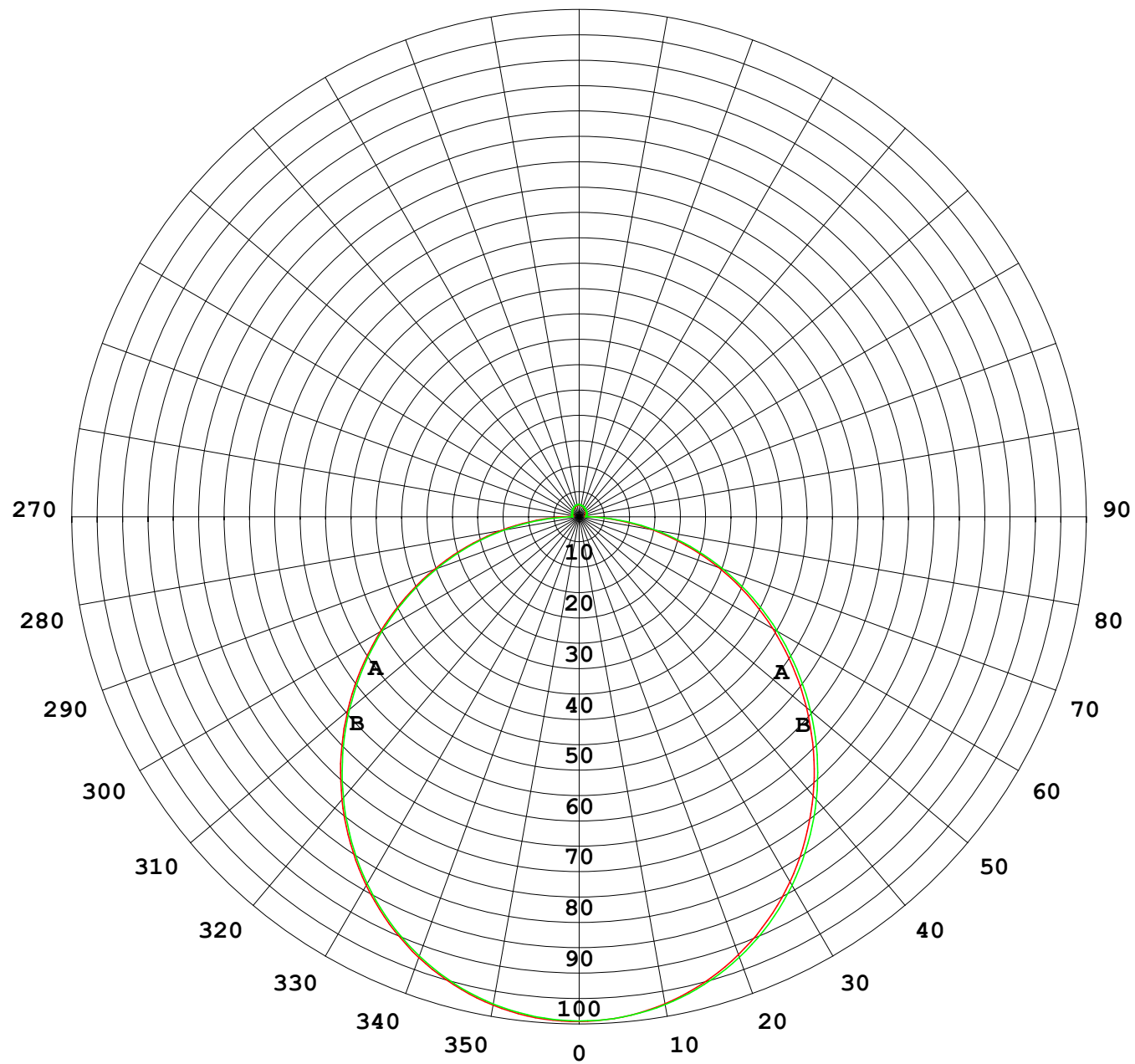
UNIT: cd

C (DEG) γ (DEG)	0	30	60	90	120	150	180	210	240	270	300	330							
0	99.4	99.4	99.4	99.4	99.4	99.4	99.4	99.4	99.4	99.4	99.4	99.4							
5	99.0	99.1	99.0	98.9	98.9	98.8	98.9	98.9	98.9	99.0	99.1	99.1							
10	97.7	97.8	97.7	97.6	97.4	97.4	97.4	97.4	97.6	97.7	97.8	97.8							
15	95.4	95.6	95.4	95.3	95.1	95.0	95.0	95.1	95.3	95.5	95.7	95.7							
20	92.4	92.5	92.4	92.2	91.9	91.8	91.8	91.9	92.2	92.4	92.6	92.6							
25	88.5	88.6	88.5	88.3	88.0	87.8	87.8	87.9	88.3	88.6	88.8	88.8							
30	83.9	84.0	83.8	83.6	83.2	83.1	83.1	83.2	83.6	83.9	84.3	84.2							
35	78.6	78.7	78.5	78.3	77.9	77.6	77.7	77.8	78.3	78.7	79.0	78.9							
40	72.7	72.8	72.6	72.3	71.9	71.7	71.7	71.9	72.3	72.8	73.1	73.1							
45	66.3	66.4	66.2	65.9	65.5	65.2	65.3	65.4	65.9	66.4	66.8	66.7							
50	59.5	59.6	59.4	59.1	58.7	58.4	58.4	58.6	59.1	59.6	60.0	60.0							
55	52.5	52.5	52.3	52.0	51.5	51.3	51.3	51.5	52.0	52.5	52.9	52.9							
60	45.2	45.3	45.0	44.7	44.2	43.9	44.1	44.1	44.7	45.1	45.6	45.6							
65	37.8	37.9	37.6	37.3	36.8	36.5	36.7	36.7	37.3	37.7	38.2	38.2							
70	30.4	30.4	30.1	29.8	29.3	29.1	29.2	29.3	29.8	30.2	30.7	30.8							
75	23.0	23.0	22.6	22.4	21.9	21.7	21.8	21.9	22.3	22.8	23.3	23.4							
80	15.6	15.6	15.2	14.9	14.4	14.3	14.5	14.5	14.9	15.4	15.9	16.0							
85	8.45	8.35	7.83	7.47	7.03	7.10	7.39	7.28	7.56	7.95	8.53	8.69							
90	3.32	3.06	2.16	1.41	1.91	2.57	2.79	2.55	2.01	1.39	2.39	3.19							
95	1.30	1.34	1.39	1.46	1.44	1.37	1.13	1.20	1.29	1.32	1.29	1.21							
100	1.32	1.41	1.43	1.50	1.47	1.44	1.20	1.24	1.36	1.40	1.36	1.24							
105	1.41	1.49	1.50	1.53	1.54	1.52	1.28	1.31	1.44	1.48	1.42	1.31							
110	1.49	1.56	1.54	1.58	1.61	1.59	1.35	1.38	1.51	1.55	1.50	1.39							
115	1.57	1.63	1.61	1.63	1.68	1.67	1.43	1.46	1.58	1.61	1.57	1.45							
120	1.65	1.71	1.67	1.70	1.74	1.74	1.51	1.53	1.65	1.67	1.62	1.52							
125	1.73	1.78	1.73	1.78	1.80	1.81	1.59	1.61	1.72	1.72	1.69	1.59							
130	1.81	1.84	1.76	1.85	1.87	1.89	1.68	1.69	1.78	1.79	1.76	1.66							
135	1.88	1.88	1.82	1.93	1.93	1.95	1.75	1.77	1.86	1.85	1.82	1.73							
140	1.95	1.94	1.91	2.00	2.00	2.03	1.84	1.86	1.93	1.92	1.90	1.80							
145	2.01	1.99	1.99	2.08	2.08	2.10	1.93	1.94	2.02	1.99	1.98	1.88							
150	2.08	2.05	2.08	2.17	2.16	2.18	2.02	2.03	2.09	2.07	2.04	1.97							
155	2.14	2.14	2.17	2.25	2.22	2.25	2.11	2.11	2.18	2.15	2.13	2.05							
160	2.21	2.21	2.25	2.32	2.29	2.31	2.19	2.19	2.25	2.22	2.21	2.14							
165	2.28	2.28	2.32	2.38	2.35	2.37	2.27	2.26	2.31	2.30	2.29	2.21							
170	2.31	2.36	2.36	2.41	2.39	2.41	2.31	2.33	2.37	2.35	2.36	2.30							
175	2.35	2.40	2.41	2.44	2.42	2.42	2.36	2.37	2.41	2.40	2.41	2.37							
180	2.37	2.40	2.43	2.45	2.43	2.43	2.37	2.40	2.43	2.44	2.44	2.42							

C Range: 0 - 360DEG
C Interval: 30.0DEG
Test Speed: HIGH
Temperature:25.3℃
Operators:
Test Date:2025-03-15

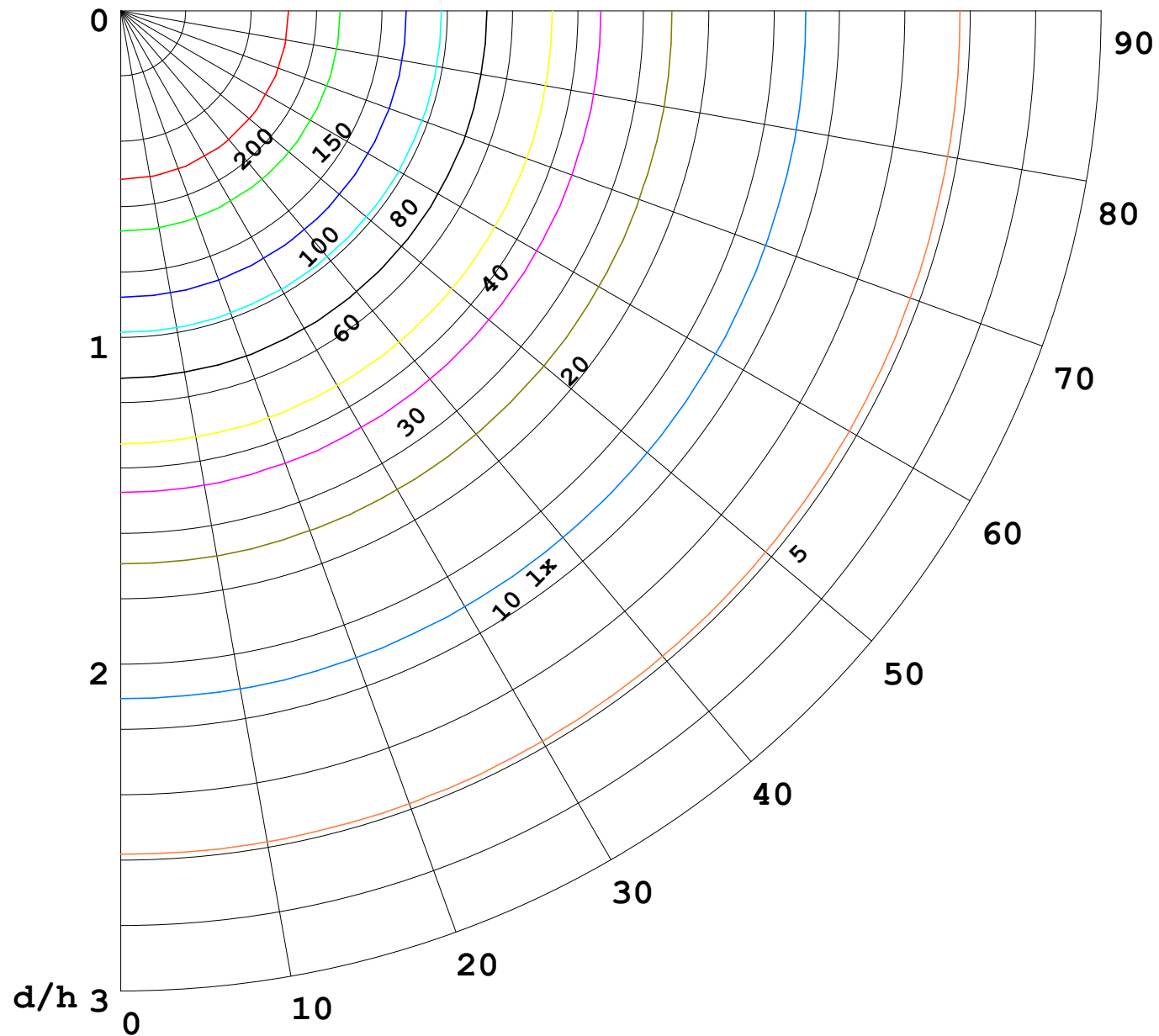
γ Range: 0 - 180DEG
γ Interval: 1.0DEG
Test System:EVERFINE GO-2000B_V1 SYSTEM V2.00.488
Humidity:65.0%
Test Distance:6.360m [K=1.0000]
Remarks:

I (cd)



1000 lm

$\kappa = 1$



F = 1000 lm
 K = 0.7
 Hcc = 0.8 m
 Hfc = 0.0 m
 Eave = 100 lx

	Pcc	Pw	Pfc
—————	70	50	30
—————	50	30	20

