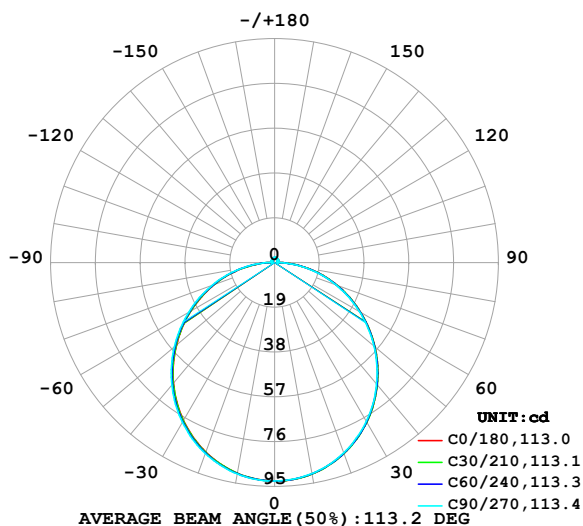


LUMINAIRE PHOTOMETRIC TEST REPORT

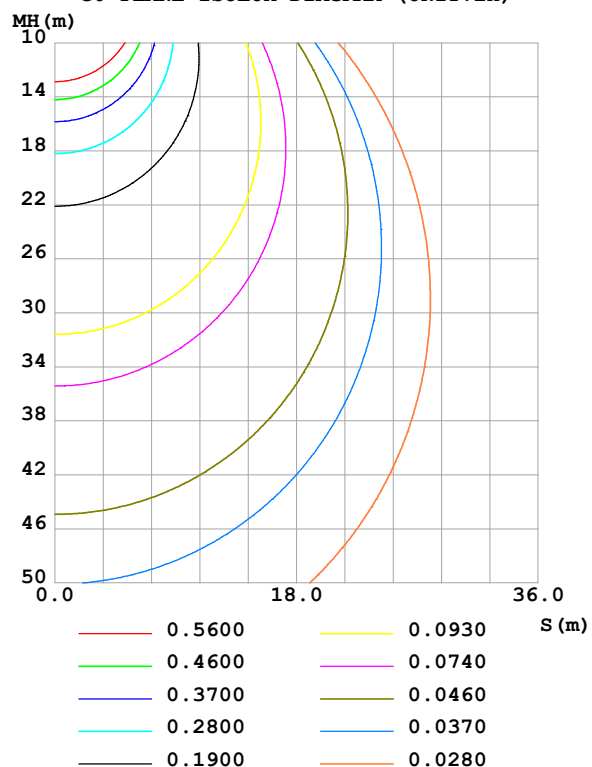
Test:U:24.00V I:0.5247A P:12.59W PF:1.000 Freq:0Hz Lamp Flux:282.984x1 lm		
NAME: SF10-24V-5050-84-SPI-RGBW(2700K)-G	TYPE:	WEIGHT:
SPEC.:	DIM.: Length=1m	SERIAL No.:
MFR.: OLympia lighting	SUR.:	Shielding Angle:

DATA OF LAMP		PHOTOMETRIC DATA				Eff: 22.47 lm/W
MODEL	2835	I _{max} (cd)	92.67	S/MH(C0/180)	1.24	
NOMINAL POWER(W)		LOR(%)	100.0	S/MH(C90/270)	1.26	
RATED VOLTAGE(V)	24	TOTAL FLUX(lm)	282.98	η UP,DN(C0-180)	1.8,48.1	
NOMINAL FLUX(lm)	282.984	CIE CLASS	DIRECT	η UP,DN(C180-360)	1.8,48.4	
LAMPS INSIDE	1	η up(%)	3.5	CIBSE SHR NOM	1.25	
TEST VOLTAGE(V)		η down(%)	96.5	CIBSE SHR MAX	1.35	

LUMINOUS INTENSITY DISTRIBUTION DIAGRAM



C0 PLANE ISOLUX DIAGRAM (UNIT:lx)



C Range: 0 - 360DEG
C Interval: 30.0DEG
Test Speed: HIGH
Temperature:25.3℃
Operators:
Test Date:2025-03-15

γ Range: 0 - 180DEG
γ Interval: 1.0DEG
Test System:EVERFINE GO-2000B_V1 SYSTEM V2.00.488
Humidity:65.0%
Test Distance:6.360m [K=1.0000]
Remarks:

ZONAL FLUX DIAGRAM

ZONAL FLUX DIAGRAM:

γ	C0	C45	C90	C135	C180	C225	C270	C315	γ	Φ zone	Φ total	%lum, lamp
10	91.07	91.07	90.91	90.74	90.77	90.86	91.06	91.20	0- 10	8.764	8.764	3.1,3.1
20	86.12	86.12	85.87	85.55	85.50	85.78	86.19	86.37	10- 20	25.07	33.84	12,12
30	78.18	78.17	77.87	77.43	77.36	77.73	78.27	78.53	20- 30	37.92	71.76	25.4,25.4
40	67.77	67.70	67.34	66.83	66.75	67.19	67.86	68.17	30- 40	45.65	117.4	41.5,41.5
50	55.51	55.41	55.00	54.44	54.39	54.83	55.57	55.94	40- 50	47.43	164.8	58.3,58.3
60	42.10	41.98	41.55	40.96	40.98	41.39	42.13	42.55	50- 60	43.38	208.2	73.6,73.6
70	28.27	28.11	27.66	27.10	27.18	27.54	28.24	28.70	60- 70	34.45	242.7	85.8,85.8
80	14.50	14.27	13.79	13.30	13.44	13.77	14.42	14.89	70- 80	22.09	264.8	93.6,93.6
90	3.069	2.358	1.204	2.018	2.583	2.198	1.419	2.661	80- 90	8.221	273.0	96.5,96.5
100	1.199	1.260	1.317	1.281	1.090	1.264	1.435	1.268	90-100	1.502	274.5	97,97
110	1.357	1.384	1.418	1.425	1.228	1.398	1.559	1.396	100-110	1.409	275.9	97.5,97.5
120	1.513	1.521	1.539	1.562	1.384	1.528	1.646	1.513	110-120	1.451	277.3	98,98
130	1.651	1.633	1.678	1.698	1.539	1.655	1.738	1.629	120-130	1.425	278.8	98.5,98.5
140	1.790	1.755	1.814	1.832	1.695	1.786	1.839	1.750	130-140	1.327	280.1	99,99
150	1.911	1.889	1.967	1.979	1.856	1.925	1.955	1.881	140-150	1.160	281.3	99.4,99.4
160	2.038	2.043	2.123	2.108	2.012	2.055	2.070	2.021	150-160	0.9187	282.2	99.7,99.7
170	2.115	2.172	2.218	2.203	2.107	2.163	2.169	2.148	160-170	0.5980	282.8	99.9,99.9
180	2.176	2.222	2.247	2.235	2.170	2.221	2.244	2.234	170-180	0.2090	283.0	100,100
DEG	LUMINOUS INTENSITY:cd									UNIT:lm		

Conical surface Flux(90deg): 141.28 lm

%lum = 49.9%

%lamp = 49.9%

Conical surface Flux(130deg): 226.81 lm

%lum = 80.2%

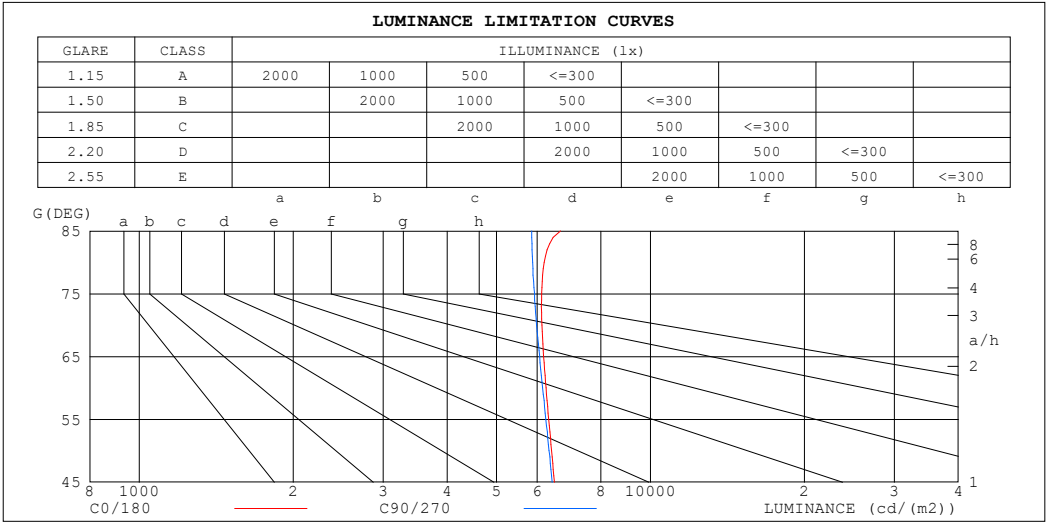
%lamp = 80.2%

C Range: 0 - 360DEG
 C Interval: 30.0DEG
 Test Speed: HIGH
 Temperature:25.3℃
 Operators:
 Test Date:2025-03-15

γ Range: 0 - 180DEG
 γ Interval: 1.0DEG
 Test System:EVERFINE GO-2000B_V1 SYSTEM V2.00.488
 Humidity:65.0%
 Test Distance:6.360m [K=1.0000]
 Remarks:

LUMINANCE LIMITATION CURVES

Test:U:24.00V I:0.5247A P:12.59W PF:1.000 Freq:0Hz Lamp Flux:282.984x1 lm		
NAME: SF10-24V-5050-84-SPI-RGBW(2700K)-G	TYPE:	WEIGHT:
SPEC.:	DIM.: Length=1m	SERIAL No.:
MFR.: OLympia lighting	SUR.:	Shielding Angle:



LUMINANCE cd/(m2)		
G (DEG)	C0/180	C90/270
85	6663	5856
80	6195	5881
75	6125	5929
70	6130	5986
65	6179	6068
60	6245	6152
55	6322	6243
50	6405	6334
45	6484	6423

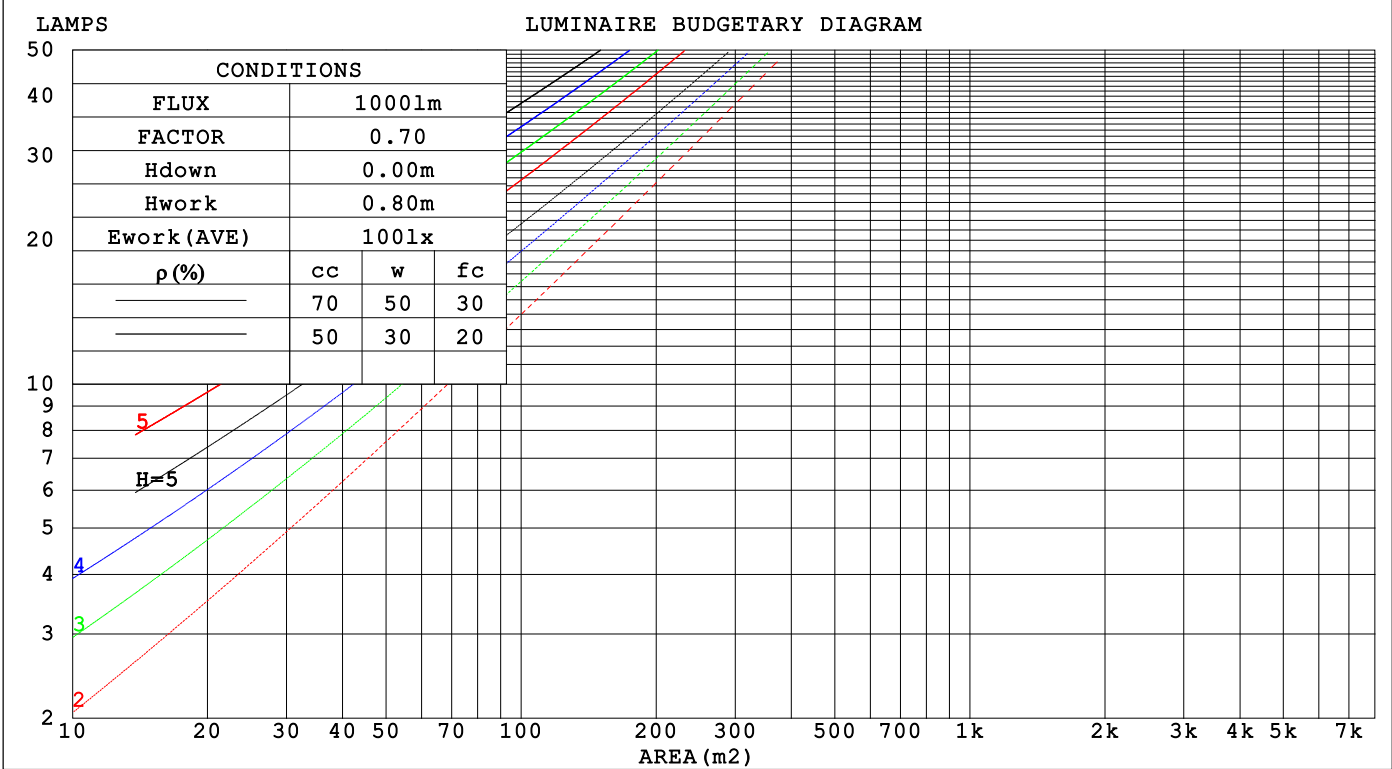
C Range: 0 - 360DEG
C Interval: 30.0DEG
Test Speed: HIGH
Temperature:25.3℃
Operators:
Test Date:2025-03-15

γ Range: 0 - 180DEG
γ Interval: 1.0DEG
Test System:EVERFINE GO-2000B_V1 SYSTEM V2.00.488
Humidity:65.0%
Test Distance:6.360m [K=1.0000]
Remarks:

CU AND LUMINAIRE BUDGETARY ESTIMATE DIAGRAM

Test:U:24.00V I:0.5247A P:12.59W PF:1.000 Freq:0Hz		
Lamp Flux:282.984x1 lm		
NAME: SF10-24V-5050-84-SPI-RGBW(2700K)-G	TYPE:	WEIGHT:
SPEC.:	DIM.: Length=1m	SERIAL No.:
MFR.: OLYMPIA lighting	SUR.:	Shielding Angle:

pcc	80%			70%			50%			30%			10%			0
p _w	50%	30%	10%	50%	30%	10%	50%	30%	10%	50%	30%	10%	50%	30%	10%	0
p _{fc}	20%			20%			20%			20%			20%			0
RCR	RCR:Room Cavity Ratio			Coefficients of Utilization(CU)												
0.0	1.18	1.18	1.18	1.15	1.15	1.15	1.09	1.09	1.09	1.04	1.04	1.04	.99	.99	.99	.96
1.0	1.02	.98	.94	.90	.95	.92	.95	.91	.88	.90	.87	.85	.86	.84	.82	.79
2.0	.89	.82	.76	.86	.80	.74	.82	.77	.72	.78	.74	.70	.75	.71	.68	.66
3.0	.78	.69	.63	.76	.68	.62	.72	.66	.60	.69	.63	.59	.66	.61	.57	.55
4.0	.69	.60	.53	.67	.59	.52	.64	.57	.51	.61	.55	.50	.59	.53	.49	.47
5.0	.61	.52	.45	.60	.51	.45	.57	.50	.44	.55	.48	.43	.53	.47	.42	.40
6.0	.55	.46	.39	.54	.45	.39	.52	.44	.38	.50	.43	.38	.48	.42	.37	.35
7.0	.50	.41	.35	.49	.40	.35	.47	.39	.34	.45	.39	.34	.44	.38	.33	.31
8.0	.45	.37	.31	.45	.36	.31	.43	.36	.30	.41	.35	.30	.40	.34	.30	.28
9.0	.42	.33	.28	.41	.33	.28	.40	.32	.27	.38	.32	.27	.37	.31	.27	.25
10.0	.38	.30	.25	.38	.30	.25	.37	.30	.25	.35	.29	.24	.34	.28	.24	.22



C Range: 0 - 360DEG
C Interval: 30.0DEG
Test Speed: HIGH
Temperature:25.3℃
Operators:
Test Date:2025-03-15

γ Range: 0 - 180DEG
γ Interval: 1.0DEG
Test System:EVERFINE GO-2000B_V1 SYSTEM V2.00.488
Humidity:65.0%
Test Distance:6.360m [K=1.0000]
Remarks:

WEC AND CCEC

Test:U:24.00V I:0.5247A P:12.59W PF:1.000 Freq:0Hz Lamp Flux:282.984x1 lm		
NAME: SF10-24V-5050-84-SPI-RGBW(2700K)-G	TYPE:	WEIGHT:
SPEC.:	DIM.: Length=1m	SERIAL No.:
MFR.: OLympia lighting	SUR.:	Shielding Angle:

pcc	80%			70%			50%			30%			10%			0
pw	50%	30%	10%	50%	30%	10%	50%	30%	10%	50%	30%	10%	50%	30%	10%	0
pfc	20%			20%			20%			20%			20%			0
RCR	RCR:Room Cavity Ratio						Wall Exitance Coefficients(WEC)									
0.0																
1.0	.325	.185	.059	.317	.181	.057	.302	.173	.055	.288	.166	.053	.275	.159	.051	
2.0	.301	.165	.051	.293	.162	.050	.280	.156	.048	.267	.150	.047	.255	.144	.046	
3.0	.276	.147	.044	.269	.144	.043	.257	.139	.042	.246	.135	.041	.235	.130	.040	
4.0	.253	.131	.039	.247	.129	.038	.236	.125	.037	.226	.122	.037	.217	.118	.036	
5.0	.233	.119	.034	.228	.117	.034	.218	.114	.033	.209	.110	.033	.201	.107	.032	
6.0	.215	.108	.031	.211	.106	.031	.202	.104	.030	.194	.101	.030	.186	.098	.029	
7.0	.200	.099	.028	.196	.098	.028	.188	.095	.027	.181	.093	.027	.174	.090	.027	
8.0	.187	.091	.026	.183	.090	.025	.176	.088	.025	.169	.086	.025	.163	.084	.024	
9.0	.175	.084	.024	.171	.083	.023	.165	.082	.023	.159	.080	.023	.153	.078	.022	
10.0	.164	.079	.022	.161	.078	.022	.155	.076	.021	.150	.074	.021	.144	.073	.021	

pcc	80%			70%			50%			30%			10%			0
pw	50%	30%	10%	50%	30%	10%	50%	30%	10%	50%	30%	10%	50%	30%	10%	0
pfc	20%			20%			20%			20%			20%			0
RCR	RCR:Room Cavity Ratio						Ceiling Cavity Exitance Coefficients (CCEC)									
0.0	.217	.217	.217	.186	.186	.186	.127	.127	.127	.073	.073	.073	.023	.023	.023	
1.0	.209	.183	.160	.178	.157	.138	.122	.108	.095	.070	.063	.055	.022	.020	.018	
2.0	.201	.159	.124	.172	.137	.107	.118	.095	.075	.068	.055	.044	.022	.018	.014	
3.0	.193	.142	.101	.165	.122	.088	.114	.085	.061	.066	.050	.036	.021	.016	.012	
4.0	.185	.129	.085	.159	.111	.074	.109	.077	.052	.063	.045	.031	.020	.015	.010	
5.0	.178	.118	.074	.153	.102	.065	.105	.072	.046	.061	.042	.027	.020	.014	.009	
6.0	.171	.110	.067	.147	.095	.058	.101	.067	.041	.059	.039	.024	.019	.013	.008	
7.0	.164	.103	.061	.141	.090	.053	.097	.063	.038	.057	.037	.022	.018	.012	.007	
8.0	.157	.098	.056	.135	.085	.049	.094	.059	.035	.054	.035	.021	.018	.011	.007	
9.0	.151	.093	.053	.130	.080	.046	.090	.056	.033	.053	.033	.020	.017	.011	.006	
10.0	.145	.088	.050	.125	.077	.044	.087	.054	.031	.051	.032	.019	.016	.010	.006	

C Range: 0 - 360DEG
C Interval: 30.0DEG
Test Speed: HIGH
Temperature:25.3℃
Operators:
Test Date:2025-03-15

γ Range: 0 - 180DEG
γ Interval: 1.0DEG
Test System:EVERFINE GO-2000B_V1 SYSTEM V2.00.488
Humidity:65.0%
Test Distance:6.360m [K=1.0000]
Remarks:

UGR(Unified Glare Rating) Table

Test:U:24.00V I:0.5247A P:12.59W PF:1.000 Freq:0Hz Lamp Flux:282.984x1 lm											
NAME: SF10-24V-5050-84-SPI-RGBW(2700K)-G					TYPE:			WEIGHT:			
SPEC.:					DIM.: Length=1m			SERIAL No.:			
MFR.: OLympia lighting					SUR.:			Shielding Angle:			
ceiling/cavity	0.7	0.7	0.5	0.5	0.3	0.7	0.7	0.5	0.5	0.3	
walls	0.5	0.3	0.5	0.3	0.3	0.5	0.3	0.5	0.3	0.3	
working plane	0.2	0.2	0.2	0.2	0.2	0.2	0.2	0.2	0.2	0.2	
Room dimensions		Viewed crosswise					Viewed endwise				
x = 2H y = 2H	2H	22.7	24.2	23.0	24.4	24.7	22.6	24.1	22.9	24.4	24.7
	3H	24.4	25.8	24.7	26.1	26.4	24.3	25.7	24.6	26.0	26.3
	4H	25.1	26.4	25.5	26.8	27.1	25.0	26.3	25.4	26.7	27.0
	6H	25.8	27.0	26.2	27.3	27.7	25.6	26.9	26.0	27.2	27.6
	8H	26.0	27.2	26.4	27.6	27.9	25.9	27.1	26.3	27.4	27.8
	12H	26.2	27.4	26.6	27.7	28.1	26.0	27.2	26.4	27.5	27.9
4H	2H	23.3	24.6	23.7	24.9	25.3	23.3	24.6	23.6	24.9	25.2
	3H	25.2	26.4	25.6	26.7	27.1	25.1	26.3	25.5	26.6	27.0
	4H	26.1	27.2	26.5	27.6	28.0	26.0	27.1	26.4	27.5	27.9
	6H	26.9	27.8	27.4	28.3	28.7	26.8	27.7	27.2	28.1	28.6
	8H	27.2	28.1	27.7	28.5	29.0	27.1	27.9	27.5	28.4	28.8
	12H	27.5	28.3	28.0	28.7	29.2	27.3	28.1	27.8	28.6	29.0
8H	4H	26.4	27.3	26.9	27.8	28.2	26.4	27.2	26.8	27.7	28.1
	6H	27.4	28.2	27.9	28.6	29.1	27.3	28.0	27.8	28.5	29.0
	8H	27.9	28.5	28.4	29.0	29.5	27.7	28.4	28.2	28.8	29.4
	12H	28.3	28.8	28.8	29.3	29.9	28.1	28.6	28.6	29.1	29.7
12H	4H	26.5	27.3	27.0	27.7	28.2	26.4	27.2	26.9	27.6	28.1
	6H	27.5	28.2	28.0	28.7	29.2	27.4	28.0	27.9	28.5	29.1
	8H	28.0	28.6	28.5	29.1	29.6	27.9	28.4	28.4	28.9	29.5
Variations with the observer position at spacings(CIE Pub.117):											
S = 1.0H		+ 0.1 / - 0.2					+ 0.1 / - 0.2				
1.5H		+ 0.2 / - 0.3					+ 0.2 / - 0.3				
2.0H		+ 0.1 / - 0.3					+ 0.1 / - 0.3				

CIE Pub.117, 283.0 lm Total Lamp Luminous Flux Correct (8log(F/F0) = -4.4)
Area: 0.0135 m2

C Range: 0 - 360DEG
C Interval: 30.0DEG
Test Speed: HIGH
Temperature:25.3℃
Operators:
Test Date:2025-03-15

γ Range: 0 - 180DEG
γ Interval: 1.0DEG
Test System:EVERFINE GO-2000B_V1 SYSTEM V2.00.488
Humidity:65.0%
Test Distance:6.360m [K=1.0000]
Remarks:

UTILIZATION FACTORS TABLE

Test:U:24.00V I:0.5247A P:12.59W PF:1.000 Freq:0Hz Lamp Flux:282.984x1 lm		
NAME: SF10-24V-5050-84-SPI-RGBW(2700K)-G	TYPE:	WEIGHT:
SPEC.:	DIM.: Length=1m	SERIAL No.:
MFR.: OLympia lighting	SUR.:	Shielding Angle:

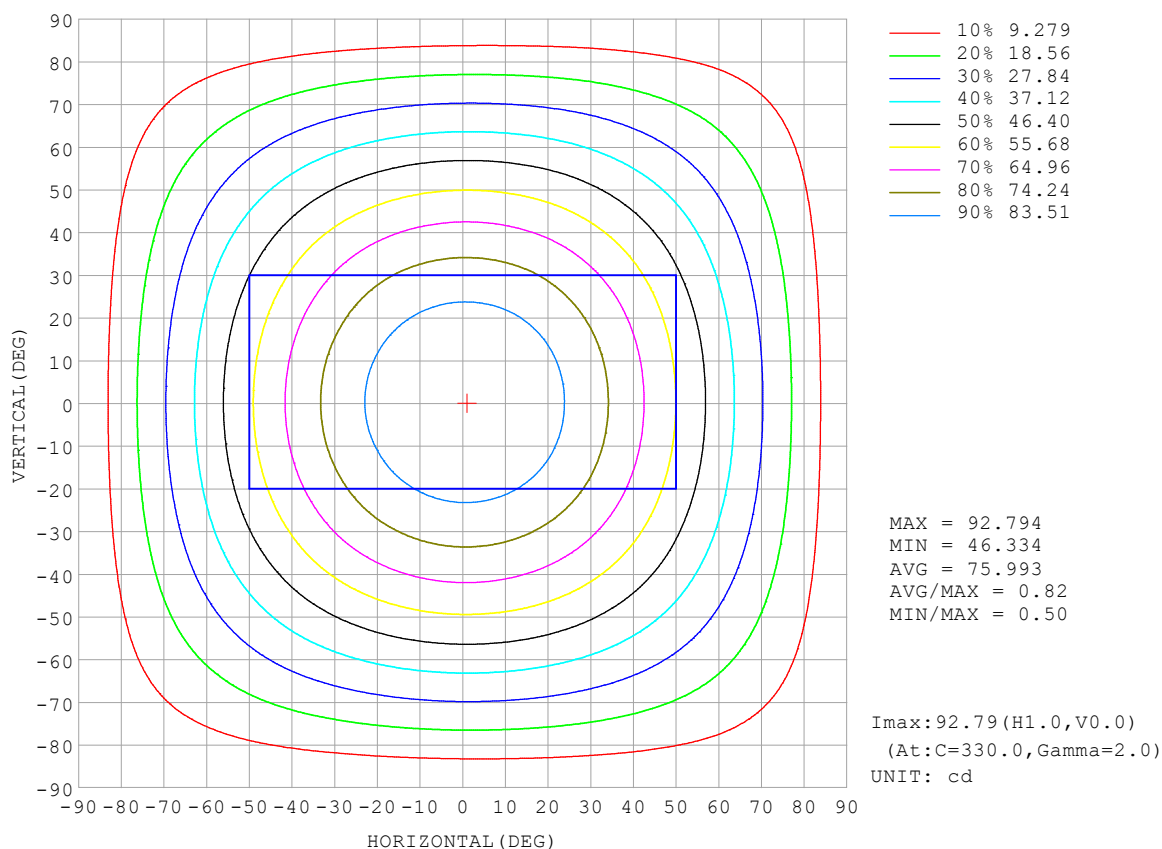
REFLECTANCE										
Ceiling	0.8	0.8	0.8	0.7	0.7	0.7	0.5	0.5	0.5	0
Walls	0.7	0.5	0.3	0.7	0.5	0.3	0.7	0.5	0.3	0
Working plane	0.2	0.2	0.2	0.2	0.2	0.2	0.2	0.2	0.2	0
ROOM INDEX	UTILIZATION FACTORS (PERCENT) $k(RI) \times RCR = 5$									
$k = 0.60$	56	44	37	55	44	37	53	43	37	30
0.80	66	54	46	64	53	46	62	52	45	38
1.00	74	62	55	72	62	55	70	63	54	46
1.25	81	70	63	79	69	62	76	67	61	53
1.50	86	76	68	84	75	68	81	72	66	58
2.00	93	84	77	91	82	76	87	80	74	66
2.50	97	89	82	95	87	81	90	84	79	70
3.00	100	93	87	98	91	86	93	88	83	74
4.00	104	98	93	102	96	92	97	92	89	79
5.00	107	102	97	104	100	96	99	95	92	82
ROOM INDEX	UF (total)									Direct
According to DIN EN 13032-2 2004			Suspended					SHRNOM = 1.25		

C Range: 0 - 360DEG
 C Interval: 30.0DEG
 Test Speed: HIGH
 Temperature: 25.3 °C
 Operators:
 Test Date: 2025-03-15

γ Range: 0 - 180DEG
 γ Interval: 1.0DEG
 Test System: EVERFINE GO-2000B_V1 SYSTEM V2.00.488
 Humidity: 65.0%
 Test Distance: 6.360m [K=1.0000]
 Remarks:

ISOCANDELA DIAGRAM

Test:U:24.00V I:0.5247A P:12.59W PF:1.000 Freq:0Hz Lamp Flux:282.984x1 lm		
NAME: SF10-24V-5050-84-SPI-RGBW(2700K)-G	TYPE:	WEIGHT:
SPEC.:	DIM.: Length=1m	SERIAL No.:
MFR.: OLympia lighting	SUR.:	Shielding Angle:

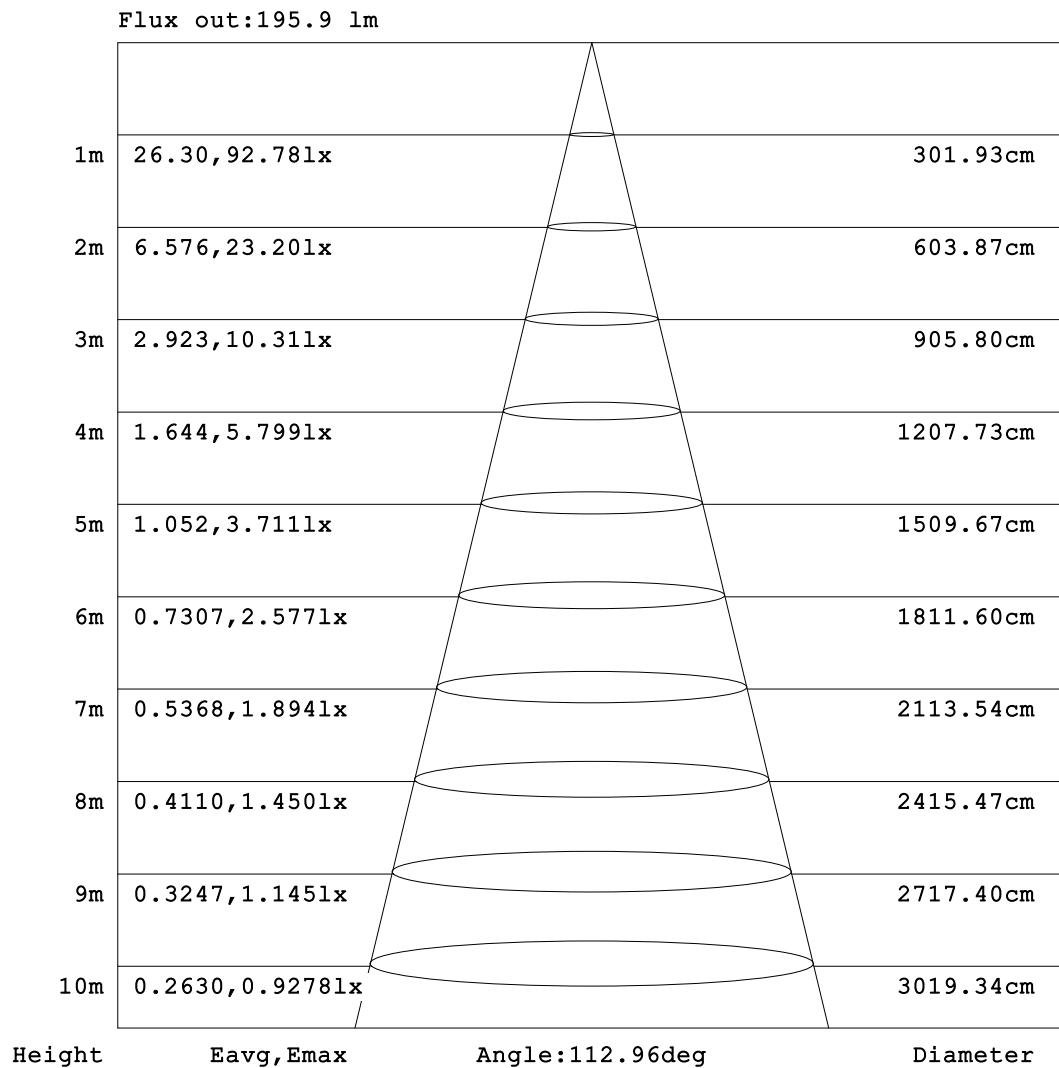


C Range: 0 - 360DEG
C Interval: 30.0DEG
Test Speed: HIGH
Temperature: 25.3°C
Operators:
Test Date: 2025-03-15

γ Range: 0 - 180DEG
γ Interval: 1.0DEG
Test System: EVERFINE GO-2000B_V1 SYSTEM V2.00.488
Humidity: 65.0%
Test Distance: 6.360m [K=1.0000]
Remarks:

AAI Figure

Test:U:24.00V I:0.5247A P:12.59W PF:1.000 Freq:0Hz Lamp Flux:282.984x1 lm		
NAME: SF10-24V-5050-84-SPI-RGBW(2700K)-G	TYPE:	WEIGHT:
SPEC.:	DIM.: Length=1m	SERIAL No.:
MFR.: OLympia lighting	SUR.:	Shielding Angle:



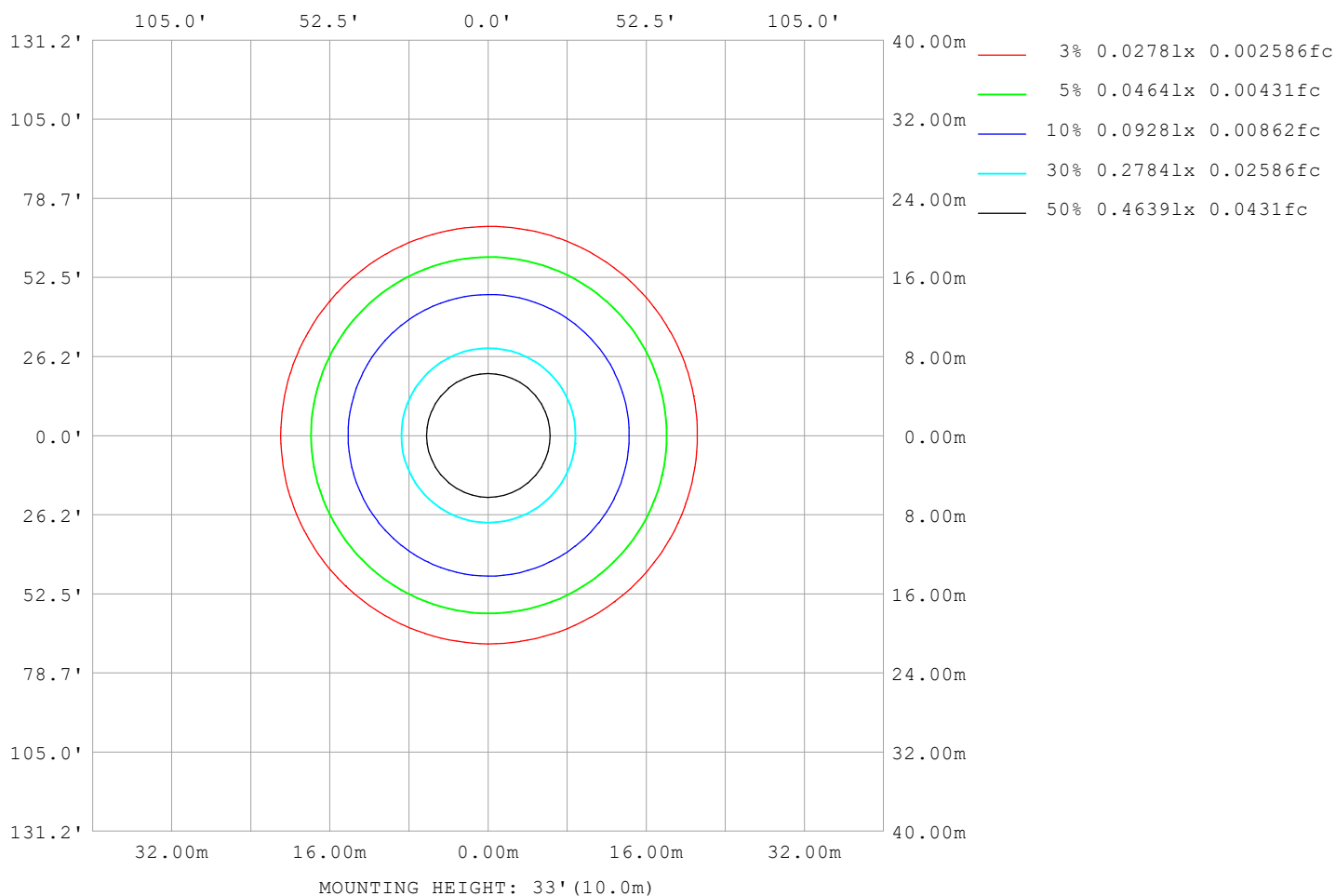
Note: The Curves indicate the illuminated area and the average illumination when the luminaire is at different distance.

C Range: 0 - 360DEG
C Interval: 30.0DEG
Test Speed: HIGH
Temperature: 25.3°C
Operators:
Test Date: 2025-03-15

γ Range: 0 - 180DEG
γ Interval: 1.0DEG
Test System: EVERFINE GO-2000B_V1 SYSTEM V2.00.488
Humidity: 65.0%
Test Distance: 6.360m [K=1.0000]
Remarks:

ISOLUX DIAGRAM

Test:U:24.00V I:0.5247A P:12.59W PF:1.000 Freq:0Hz Lamp Flux:282.984x1 lm		
NAME: SF10-24V-5050-84-SPI-RGBW(2700K)-G	TYPE:	WEIGHT:
SPEC.:	DIM.: Length=1m	SERIAL No.:
MFR.: OLympia lighting	SUR.:	Shielding Angle:



C Range: 0 - 360DEG
C Interval: 30.0DEG
Test Speed: HIGH
Temperature: 25.3°C
Operators:
Test Date: 2025-03-15

γ Range: 0 - 180DEG
γ Interval: 1.0DEG
Test System: EVERFINE GO-2000B_V1 SYSTEM V2.00.488
Humidity: 65.0%
Test Distance: 6.360m [K=1.0000]
Remarks:

LED Avg.L Report

Test:U:24.00V I:0.5247A P:12.59W PF:1.000 Freq:0Hz Lamp Flux:282.984x1 lm		
NAME: SF10-24V-5050-84-SPI-RGBW(2700K)-G	TYPE:	WEIGHT:
SPEC.:	DIM.: Length=1m	SERIAL No.:
MFR.: OLympia lighting	SUR.:	Shielding Angle:

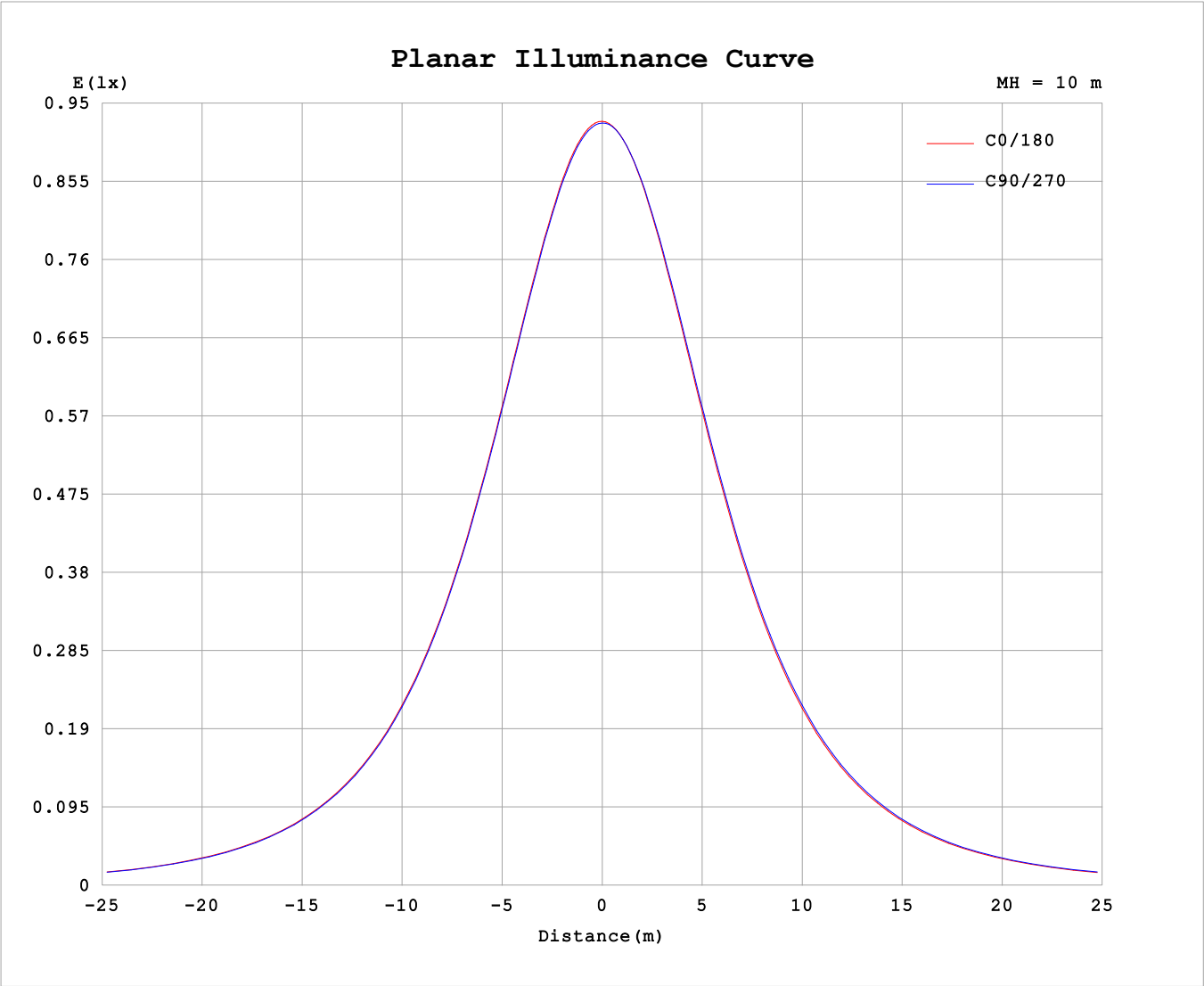
AvgL	cd/m2
L_0~180 (65) av	6073
L_0~180 (75) av	5961
L_0~180 (85) av	6258
L_90~270 (65) av	6120
L_90~270 (75) av	6016
L_90~270 (85) av	6144
L_45 (65) av	6103
L_45 (75) av	5996
L_45 (85) av	6175

Standard: GB/T 29293-2012

C Range: 0 - 360DEG
C Interval: 30.0DEG
Test Speed: HIGH
Temperature:25.3℃
Operators:
Test Date:2025-03-15

γ Range: 0 - 180DEG
γ Interval: 1.0DEG
Test System:EVERFINE GO-2000B_V1 SYSTEM V2.00.488
Humidity:65.0%
Test Distance:6.360m [K=1.0000]
Remarks:

Planar Illuminance Curve



C Range: 0 - 360DEG	γ Range: 0 - 180DEG
C Interval: 30.0DEG	γ Interval: 1.0DEG
Test Speed: HIGH	Test System:EVERFINE GO-2000B_V1 SYSTEM V2.00.488
Temperature:25.3℃	Humidity:65.0%
Operators:	Test Distance:6.360m [K=1.0000]
Test Date:2025-03-15	Remarks:

LUMINOUS DISTRIBUTION INTENSITY DATA

Test:U:24.00V I:0.5247A P:12.59W PF:1.000 Freq:0Hz Lamp Flux:282.984x1 lm		
NAME: SF10-24V-5050-84-SPI-RGBW(2700K)-G	TYPE:	WEIGHT:
SPEC.:	DIM.: Length=1m	SERIAL No.:
MFR.: OLympia lighting	SUR.:	Shielding Angle:

Table--1

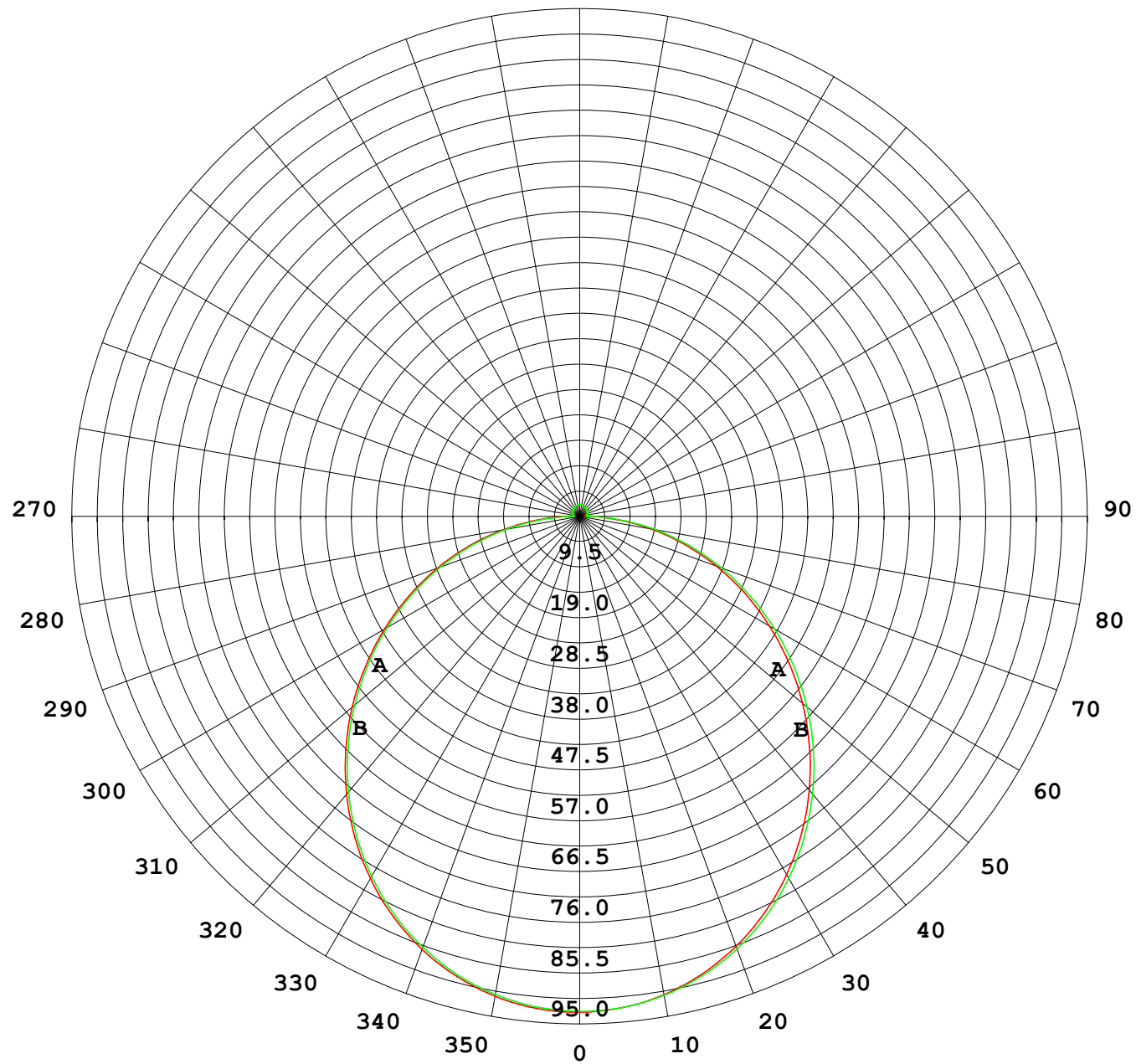
UNIT: cd

C (DEG) γ (DEG)	0	30	60	90	120	150	180	210	240	270	300	330							
0	92.7	92.7	92.7	92.7	92.7	92.7	92.7	92.7	92.7	92.7	92.7	92.7							
5	92.3	92.3	92.3	92.2	92.1	92.1	92.1	92.1	92.2	92.3	92.3	92.4							
10	91.1	91.1	91.0	90.9	90.8	90.7	90.8	90.8	91.0	91.1	91.2	91.2							
15	89.0	89.1	88.9	88.8	88.6	88.5	88.5	88.6	88.9	89.0	89.2	89.2							
20	86.1	86.2	86.1	85.9	85.6	85.5	85.5	85.6	85.9	86.2	86.4	86.4							
25	82.5	82.6	82.4	82.2	81.9	81.7	81.8	81.9	82.3	82.6	82.8	82.8							
30	78.2	78.2	78.1	77.9	77.5	77.3	77.4	77.5	77.9	78.3	78.6	78.5							
35	73.2	73.3	73.1	72.9	72.5	72.3	72.3	72.5	73.0	73.4	73.7	73.6							
40	67.8	67.8	67.6	67.3	66.9	66.7	66.7	66.9	67.4	67.9	68.2	68.1							
45	61.8	61.8	61.6	61.4	60.9	60.7	60.7	60.9	61.5	61.9	62.3	62.2							
50	55.5	55.5	55.3	55.0	54.6	54.3	54.4	54.6	55.1	55.6	56.0	55.9							
55	48.9	48.9	48.7	48.4	47.9	47.7	47.8	47.9	48.5	48.9	49.4	49.3							
60	42.1	42.1	41.9	41.6	41.1	40.8	41.0	41.1	41.7	42.1	42.6	42.5							
65	35.2	35.2	34.9	34.6	34.2	33.9	34.1	34.2	34.8	35.2	35.7	35.6							
70	28.3	28.3	28.0	27.7	27.2	27.0	27.2	27.3	27.8	28.2	28.7	28.7							
75	21.4	21.4	21.0	20.7	20.3	20.1	20.3	20.4	20.9	21.3	21.8	21.8							
80	14.5	14.5	14.1	13.8	13.4	13.3	13.4	13.5	14.0	14.4	14.9	14.9							
85	7.83	7.70	7.22	6.89	6.49	6.62	6.90	6.85	7.15	7.56	8.03	8.10							
90	3.07	2.78	1.94	1.20	1.69	2.35	2.58	2.41	1.98	1.42	2.33	2.99							
95	1.17	1.19	1.21	1.27	1.22	1.20	1.03	1.13	1.29	1.36	1.30	1.15							
100	1.20	1.26	1.26	1.32	1.29	1.27	1.09	1.17	1.36	1.44	1.36	1.17							
105	1.27	1.33	1.32	1.37	1.35	1.35	1.16	1.24	1.43	1.50	1.43	1.24							
110	1.36	1.40	1.37	1.42	1.42	1.43	1.23	1.31	1.49	1.56	1.49	1.30							
115	1.43	1.47	1.44	1.47	1.49	1.50	1.30	1.38	1.55	1.61	1.54	1.37							
120	1.51	1.54	1.50	1.54	1.55	1.57	1.38	1.45	1.61	1.65	1.59	1.43							
125	1.59	1.61	1.56	1.61	1.62	1.64	1.46	1.51	1.66	1.70	1.64	1.49							
130	1.65	1.66	1.60	1.68	1.68	1.72	1.54	1.59	1.72	1.74	1.70	1.56							
135	1.72	1.71	1.66	1.74	1.74	1.78	1.62	1.66	1.78	1.79	1.75	1.62							
140	1.79	1.77	1.74	1.81	1.82	1.85	1.69	1.74	1.84	1.84	1.81	1.69							
145	1.85	1.82	1.82	1.89	1.89	1.92	1.78	1.81	1.91	1.89	1.87	1.76							
150	1.91	1.88	1.90	1.97	1.96	2.00	1.86	1.88	1.97	1.95	1.93	1.83							
155	1.97	1.95	1.99	2.05	2.03	2.06	1.93	1.95	2.03	2.02	2.00	1.91							
160	2.04	2.03	2.06	2.12	2.09	2.12	2.01	2.02	2.09	2.07	2.06	1.98							
165	2.10	2.08	2.12	2.18	2.15	2.18	2.09	2.09	2.14	2.12	2.12	2.05							
170	2.12	2.17	2.17	2.22	2.19	2.21	2.11	2.14	2.19	2.17	2.17	2.13							
175	2.15	2.21	2.21	2.25	2.22	2.23	2.16	2.18	2.22	2.21	2.21	2.18							
180	2.18	2.21	2.23	2.25	2.24	2.23	2.17	2.21	2.23	2.24	2.24	2.22							

C Range: 0 - 360DEG
C Interval: 30.0DEG
Test Speed: HIGH
Temperature:25.3℃
Operators:
Test Date:2025-03-15

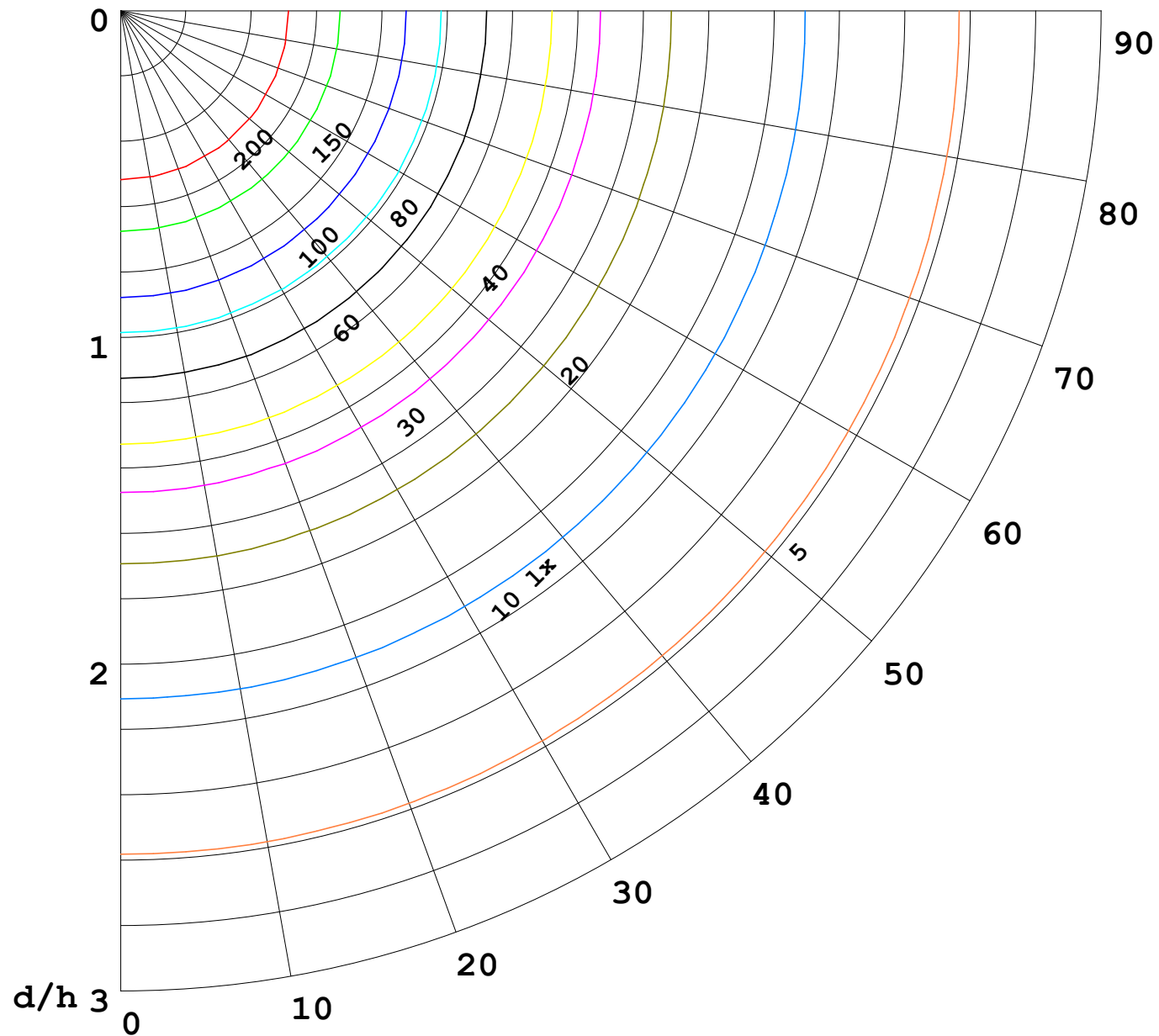
γ Range: 0 - 180DEG
γ Interval: 1.0DEG
Test System:EVERFINE GO-2000B_V1 SYSTEM V2.00.488
Humidity:65.0%
Test Distance:6.360m [K=1.0000]
Remarks:

I (cd)



1000 lm

$\kappa = 1$



F = 1000 lm
 K = 0.7
 Hcc = 0.8 m
 Hfc = 0.0 m
 Eave = 100 lx

	Pcc	Pw	Pfc
————	70	50	30
————	50	30	20

