

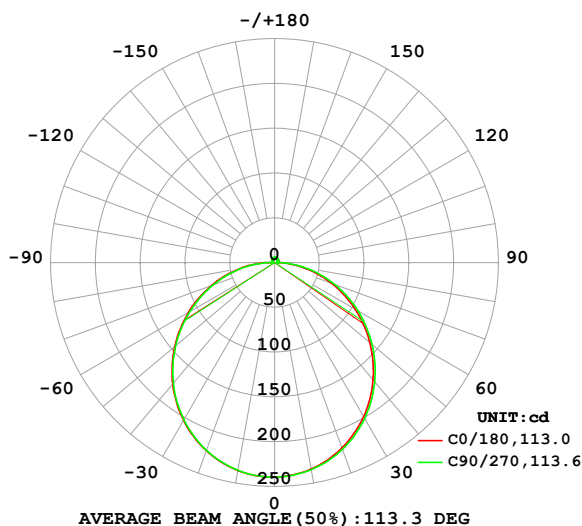
## LUMINAIRE PHOTOMETRIC TEST REPORT

Test:U:24.00V I:0.4151A P:9.962W PF:1.000 Freq:0Hz  
Lamp Flux:731.15x1 lm

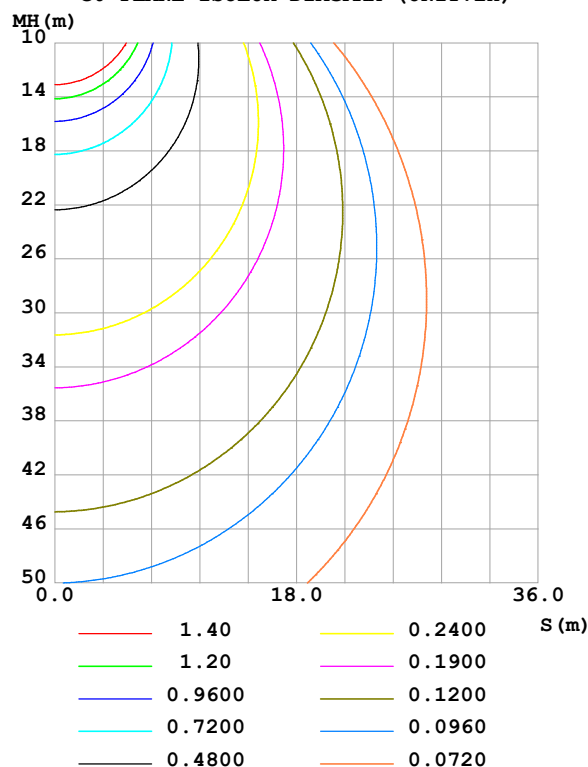
NAME: SF10-24V-2835-144-5000-80	TYPE:	WEIGHT:
SPEC.:	DIM.: Length=1m	SERIAL No.:
MFR.:	SUR.:	Shielding Angle:

DATA OF LAMP		PHOTOMETRIC DATA Eff: 73.39 lm/W			
MODEL		I <sub>max</sub> (cd)	239.5	S/MH(C0/180)	1.26
NOMINAL POWER(W)		LOR(%)	100.0	S/MH(C90/270)	1.26
RATED VOLTAGE(V)		TOTAL FLUX(lm)	731.15	η UP,DN(C0-180)	1.8,47.8
NOMINAL FLUX(lm)	731.15	CIE CLASS	DIRECT	η UP,DN(C180-360)	1.7,48.6
LAMPS INSIDE	1	η up (%)	3.5	CIBSE SHR NOM	1.25
TEST VOLTAGE(V)		η down (%)	96.5	CIBSE SHR MAX	1.35

LUMINOUS INTENSITY DISTRIBUTION DIAGRAM



C0 PLANE ISOLUX DIAGRAM (UNIT:lx)



C Range: 0 - 360DEG  
C Interval: 22.5DEG  
Test Speed: HIGH  
Temperature:25.3℃  
Operators:Cloud  
Test Date:2024-11-05

γ Range: 0 - 180DEG  
γ Interval: 1.0DEG  
Test System:EVERFINE GO-2000B\_V1 SYSTEM V2.00.488  
Humidity:65.0%  
Test Distance:6.360m [K=1.0000]  
Remarks:

## ZONAL FLUX DIAGRAM

## ZONAL FLUX DIAGRAM:

$\gamma$	C0	C45	C90	C135	C180	C225	C270	C315	$\gamma$	$\Phi$ zone	$\Phi$ total	%lum, lamp
10	234.1	234.4	234.8	235.4	235.8	235.9	235.5	234.9	0- 10	22.65	22.65	3.1,3.1
20	220.2	220.8	221.7	222.8	223.4	223.7	223.0	221.7	10- 20	64.80	87.45	12,12
30	198.8	199.5	201.0	202.5	203.4	203.9	202.7	200.7	20- 30	98.04	185.5	25.4,25.4
40	171.1	172.0	174.0	175.7	177.1	177.5	176.1	173.5	30- 40	118.1	303.6	41.5,41.5
50	138.8	139.8	142.1	144.0	145.6	146.0	144.2	141.3	40- 50	122.8	426.4	58.3,58.3
60	103.7	104.8	107.4	109.4	111.1	111.3	109.3	106.2	50- 60	112.2	538.6	73.7,73.7
70	67.60	68.61	71.09	73.31	75.18	75.17	72.97	69.99	60- 70	88.94	627.6	85.8,85.8
80	32.11	33.05	35.34	37.80	39.68	39.33	36.99	34.18	70- 80	56.80	684.4	93.6,93.6
90	5.769	4.768	2.816	6.842	9.207	7.564	3.173	5.126	80- 90	21.15	705.5	96.5,96.5
100	3.134	3.148	3.226	3.147	2.775	3.163	3.183	3.174	90-100	3.707	709.2	97,97
110	3.591	3.598	3.656	3.604	3.183	3.495	3.337	3.506	100-110	3.503	712.7	97.5,97.5
120	4.029	3.959	4.044	4.049	3.604	3.853	3.657	3.844	110-120	3.670	716.4	98,98
130	4.437	4.339	4.410	4.468	4.024	4.216	4.117	4.180	120-130	3.655	720.0	98.5,98.5
140	4.803	4.715	4.774	4.858	4.450	4.620	4.628	4.547	130-140	3.458	723.5	99,99
150	5.169	5.070	5.236	5.265	4.896	5.047	5.058	4.827	140-150	3.051	726.5	99.4,99.4
160	5.520	5.528	5.606	5.632	5.345	5.466	5.483	5.275	150-160	2.439	729.0	99.7,99.7
170	5.707	5.829	5.904	5.896	5.618	5.818	5.867	5.792	160-170	1.599	730.6	99.9,99.9
180	5.837	5.996	6.055	6.023	5.837	5.996	6.057	6.032	170-180	0.5626	731.1	100,100
DEG	LUMINOUS INTENSITY:cd									UNIT:lm		

Conical surface Flux(90deg): 365.39 lm

%lum = 50.0%

%lamp = 50.0%

Conical surface Flux(130deg): 586.67 lm

%lum = 80.2%

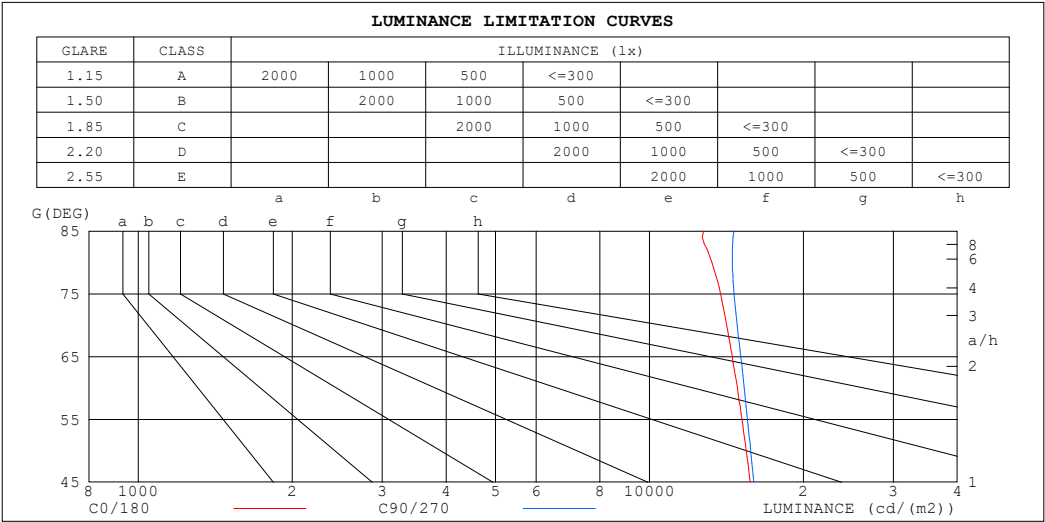
%lamp = 80.2%

C Range: 0 - 360DEG  
 C Interval: 22.5DEG  
 Test Speed: HIGH  
 Temperature:25.3℃  
 Operators:Cloud  
 Test Date:2024-11-05

$\gamma$  Range: 0 - 180DEG  
 $\gamma$  Interval: 1.0DEG  
 Test System:EVERFINE GO-2000B\_V1 SYSTEM V2.00.488  
 Humidity:65.0%  
 Test Distance:6.360m [K=1.0000]  
 Remarks:

LUMINANCE LIMITATION CURVES

Test:U:24.00V I:0.4151A P:9.962W PF:1.000 Freq:0Hz Lamp Flux:731.15x1 lm		
NAME: SF10-24V-2835-144-5000-80	TYPE:	WEIGHT:
SPEC.:	DIM.: Length=1m	SERIAL No.:
MFR.:	SUR.:	Shielding Angle:



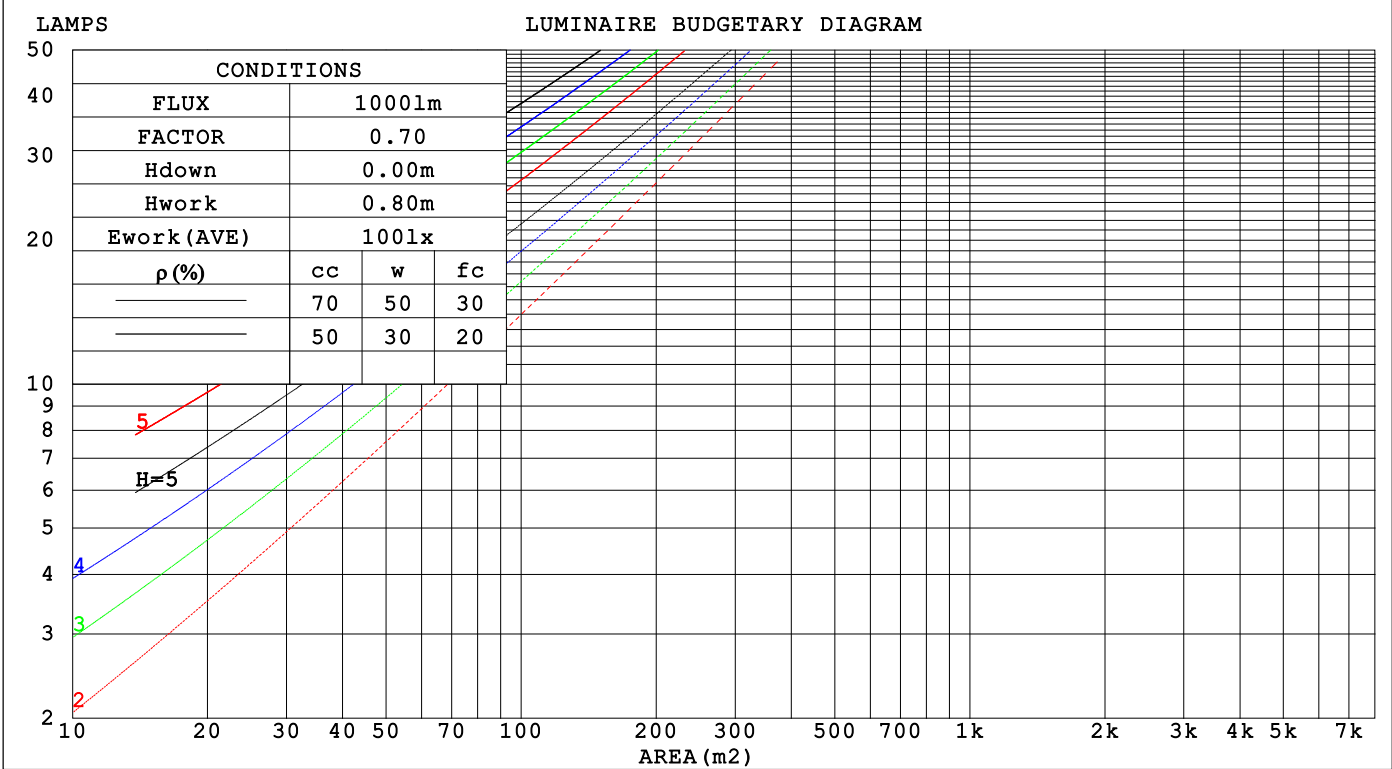
LUMINANCE cd/(m2)		
G (DEG)	C0/180	C90/270
85	12760	14629
80	13246	14524
75	13764	14631
70	14158	14835
65	14520	15073
60	14854	15326
55	15171	15554
50	15464	15778
45	15738	15995

C Range: 0 - 360DEG	γ Range: 0 - 180DEG
C Interval: 22.5DEG	γ Interval: 1.0DEG
Test Speed: HIGH	Test System:EVERFINE GO-2000B_V1 SYSTEM V2.00.488
Temperature:25.3℃	Humidity:65.0%
Operators:Cloud	Test Distance:6.360m [K=1.0000]
Test Date:2024-11-05	Remarks:

CU AND LUMINAIRE BUDGETARY ESTIMATE DIAGRAM

Test:U:24.00V I:0.4151A P:9.962W PF:1.000 Freq:0Hz Lamp Flux:731.15x1 lm		
NAME: SF10-24V-2835-144-5000-80	TYPE:	WEIGHT:
SPEC.:	DIM.: Length=1m	SERIAL No.:
MFR.:	SUR.:	Shielding Angle:

pcc	80%			70%			50%			30%			10%			0
p <sub>w</sub>	50%	30%	10%	50%	30%	10%	50%	30%	10%	50%	30%	10%	50%	30%	10%	0
p <sub>fc</sub>	20%			20%			20%			20%			20%			0
RCR	RCR:Room Cavity Ratio															

C Range: 0 - 360DEG  
C Interval: 22.5DEG  
Test Speed: HIGH  
Temperature:25.3℃  
Operators:Cloud  
Test Date:2024-11-05γ Range: 0 - 180DEG  
γ Interval: 1.0DEG  
Test System:EVERFINE GO-2000B\_V1 SYSTEM V2.00.488  
Humidity:65.0%  
Test Distance:6.360m [K=1.0000]  
Remarks:

## WEC AND CCEC

Test:U:24.00V I:0.4151A P:9.962W PF:1.000 Freq:0Hz Lamp Flux:731.15x1 lm					
NAME: SF10-24V-2835-144-5000-80			TYPE:		WEIGHT:
SPEC.:			DIM.: Length=1m		SERIAL No.:
MFR.:			SUR.:		Shielding Angle:

pcc	80%			70%			50%			30%			10%			0														
pw	50%	30%	10%	50%	30%	10%	50%	30%	10%	50%	30%	10%	50%	30%	10%	0														
pfc	20%			20%			20%			20%			20%			0														
RCR	RCR:Room Cavity Ratio															Wall Exitance Coefficients(WEC)														
0.0																														
1.0	.325	.185	.059	.317	.181	.057	.301	.173	.055	.287	.166	.053	.274	.159	.051															
2.0	.300	.165	.050	.293	.161	.050	.279	.155	.048	.267	.150	.047	.255	.144	.046															
3.0	.275	.147	.044	.269	.144	.043	.257	.139	.042	.246	.135	.041	.235	.130	.040															
4.0	.253	.131	.039	.247	.129	.038	.236	.125	.037	.226	.121	.037	.217	.118	.036															
5.0	.233	.119	.034	.228	.117	.034	.218	.114	.033	.209	.110	.033	.201	.107	.032															
6.0	.215	.108	.031	.211	.106	.031	.202	.104	.030	.194	.101	.030	.186	.098	.029															
7.0	.200	.099	.028	.196	.098	.028	.188	.095	.027	.181	.093	.027	.174	.090	.027															
8.0	.187	.091	.026	.183	.090	.025	.176	.088	.025	.169	.086	.025	.163	.084	.024															
9.0	.175	.084	.024	.171	.083	.023	.165	.082	.023	.159	.080	.023	.153	.078	.022															
10.0	.164	.079	.022	.161	.078	.022	.155	.076	.021	.150	.074	.021	.144	.073	.021															

pcc	80%			70%			50%			30%			10%			0
pw	50%	30%	10%	50%	30%	10%	50%	30%	10%	50%	30%	10%	50%	30%	10%	0
pfc	20%			20%			20%			20%			20%			0
RCR	RCR:Room Cavity Ratio						Ceiling Cavity Exitance Coefficients (CCEC)									
0.0	.217	.217	.217	.186	.186	.186	.127	.127	.127	.073	.073	.073	.023	.023	.023	
1.0	.208	.183	.160	.178	.157	.138	.122	.108	.095	.070	.063	.055	.022	.020	.018	
2.0	.201	.159	.124	.172	.137	.107	.118	.095	.075	.068	.055	.044	.022	.018	.014	
3.0	.193	.142	.101	.165	.122	.087	.113	.085	.061	.066	.050	.036	.021	.016	.012	
4.0	.185	.128	.085	.159	.111	.074	.109	.077	.052	.063	.045	.031	.020	.015	.010	
5.0	.178	.118	.074	.153	.102	.065	.105	.071	.046	.061	.042	.027	.020	.014	.009	
6.0	.170	.110	.066	.146	.095	.058	.101	.067	.041	.059	.039	.024	.019	.013	.008	
7.0	.164	.103	.061	.141	.089	.053	.097	.063	.037	.056	.037	.022	.018	.012	.007	
8.0	.157	.097	.056	.135	.084	.049	.094	.059	.035	.054	.035	.021	.018	.011	.007	
9.0	.151	.092	.053	.130	.080	.046	.090	.056	.033	.052	.033	.020	.017	.011	.006	
10.0	.145	.088	.050	.125	.077	.044	.087	.054	.031	.051	.032	.019	.016	.010	.006	

C Range: 0 - 360DEG  
C Interval: 22.5DEG  
Test Speed: HIGH  
Temperature:25.3℃  
Operators:Cloud  
Test Date:2024-11-05

γ Range: 0 - 180DEG  
γ Interval: 1.0DEG  
Test System:EVERFINE GO-2000B\_V1 SYSTEM V2.00.488  
Humidity:65.0%  
Test Distance:6.360m [K=1.0000]  
Remarks:

UGR(Unified Glare Rating) Table

Test:U:24.00V I:0.4151A P:9.962W PF:1.000 Freq:0Hz Lamp Flux:731.15x1 lm										
NAME: SF10-24V-2835-144-5000-80					TYPE:			WEIGHT:		
SPEC.:					DIM.: Length=1m			SERIAL No.:		
MFR.:					SUR.:			Shielding Angle:		
ceiling/cavity	0.7	0.7	0.5	0.5	0.3	0.7	0.7	0.5	0.5	0.3
walls	0.5	0.3	0.5	0.3	0.3	0.5	0.3	0.5	0.3	0.3
working plane	0.2	0.2	0.2	0.2	0.2	0.2	0.2	0.2	0.2	0.2
Room dimensions	Viewed crosswise					Viewed endwise				
x = 2H y = 2H	23.1	24.6	23.4	24.8	25.1	23.2	24.7	23.5	25.0	25.2
3H	24.7	26.1	25.1	26.4	26.7	24.9	26.3	25.2	26.5	26.9
4H	25.4	26.7	25.8	27.0	27.4	25.6	26.9	26.0	27.2	27.6
6H	25.9	27.2	26.3	27.5	27.9	26.2	27.4	26.6	27.8	28.1
8H	26.1	27.3	26.5	27.7	28.0	26.4	27.6	26.8	28.0	28.3
12H	26.3	27.4	26.7	27.8	28.2	26.6	27.7	27.0	28.1	28.5
4H 2H	23.7	25.0	24.1	25.4	25.7	23.8	25.1	24.2	25.4	25.8
3H	25.5	26.7	25.9	27.0	27.4	25.7	26.8	26.1	27.2	27.6
4H	26.4	27.4	26.8	27.8	28.2	26.5	27.6	27.0	28.0	28.4
6H	27.0	28.0	27.5	28.4	28.8	27.3	28.2	27.7	28.6	29.1
8H	27.3	28.2	27.8	28.6	29.1	27.6	28.4	28.0	28.9	29.3
12H	27.5	28.3	28.0	28.7	29.2	27.8	28.6	28.3	29.1	29.5
8H 4H	26.7	27.5	27.1	28.0	28.4	26.8	27.7	27.3	28.1	28.6
6H	27.5	28.3	28.0	28.7	29.2	27.7	28.5	28.2	28.9	29.4
8H	27.9	28.5	28.4	29.0	29.6	28.2	28.8	28.7	29.3	29.8
12H	28.2	28.7	28.7	29.2	29.8	28.5	29.1	29.0	29.6	30.1
12H 4H	26.7	27.5	27.2	28.0	28.4	26.9	27.7	27.3	28.1	28.6
6H	27.6	28.3	28.1	28.8	29.3	27.8	28.5	28.3	29.0	29.5
8H	28.0	28.6	28.6	29.1	29.6	28.3	28.8	28.8	29.3	29.9
Variations with the observer position at spacings(CIE Pub.117):										
S = 1.0H	+ 0.1 / - 0.2					+ 0.1 / - 0.2				
1.5H	+ 0.2 / - 0.3					+ 0.2 / - 0.3				
2.0H	+ 0.1 / - 0.3					+ 0.1 / - 0.3				

CIE Pub.117, 731.1 lm Total Lamp Luminous Flux Correct (8log(F/F0) = -1.1)  
Area: 0.014 m2

C Range: 0 - 360DEG  
C Interval: 22.5DEG  
Test Speed: HIGH  
Temperature:25.3℃  
Operators:Cloud  
Test Date:2024-11-05

γ Range: 0 - 180DEG  
γ Interval: 1.0DEG  
Test System:EVERFINE GO-2000B\_V1 SYSTEM V2.00.488  
Humidity:65.0%  
Test Distance:6.360m [K=1.0000]  
Remarks:

## UTILIZATION FACTORS TABLE

Test:U:24.00V I:0.4151A P:9.962W PF:1.000 Freq:0Hz Lamp Flux:731.15x1 lm		
NAME: SF10-24V-2835-144-5000-80	TYPE:	WEIGHT:
SPEC.:	DIM.: Length=1m	SERIAL No.:
MFR.:	SUR.:	Shielding Angle:

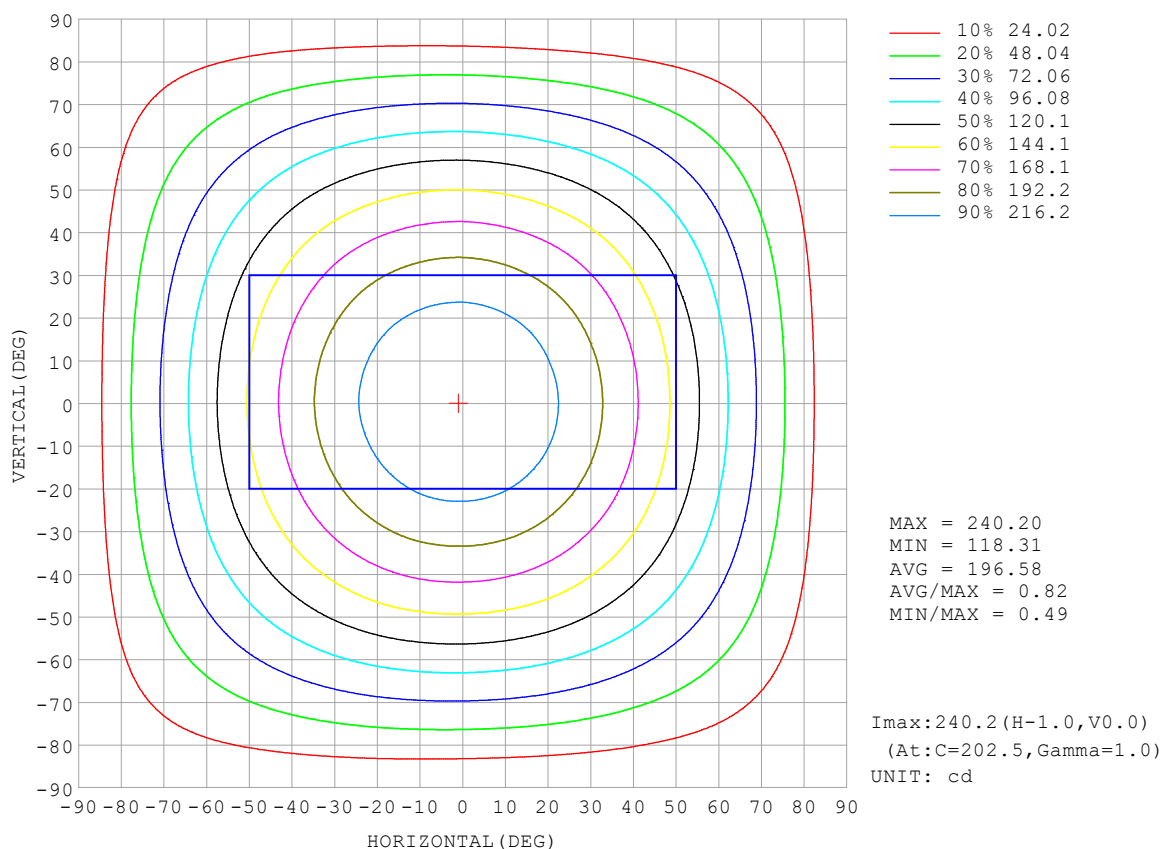
REFLECTANCE										
Ceiling	0.8	0.8	0.8	0.7	0.7	0.7	0.5	0.5	0.5	0
Walls	0.7	0.5	0.3	0.7	0.5	0.3	0.7	0.5	0.3	0
Working plane	0.2	0.2	0.2	0.2	0.2	0.2	0.2	0.2	0.2	0
ROOM INDEX	UTILIZATION FACTORS (PERCENT) $k(RI) \times RCR = 5$									
$k = 0.60$	56	44	37	55	44	37	54	43	37	30
0.80	66	54	46	64	53	46	62	52	45	38
1.00	74	62	55	72	62	55	70	63	54	46
1.25	81	70	63	79	69	62	76	67	61	53
1.50	86	76	68	84	75	68	81	72	66	58
2.00	93	84	77	91	82	76	87	80	74	66
2.50	97	89	82	95	87	81	90	84	79	70
3.00	100	93	87	98	91	86	93	88	83	74
4.00	104	98	93	102	96	92	97	92	89	79
5.00	107	102	97	104	100	96	99	95	92	82
ROOM INDEX	UF (total)									Direct
According to DIN EN 13032-2 2004			Suspended					SHRNOM = 1.25		

C Range: 0 - 360DEG  
 C Interval: 22.5DEG  
 Test Speed: HIGH  
 Temperature: 25.3°C  
 Operators: Cloud  
 Test Date: 2024-11-05

γ Range: 0 - 180DEG  
 γ Interval: 1.0DEG  
 Test System: EVERFINE GO-2000B\_V1 SYSTEM V2.00.488  
 Humidity: 65.0%  
 Test Distance: 6.360m [K=1.0000]  
 Remarks:

## ISOCANDELA DIAGRAM

Test:U:24.00V I:0.4151A P:9.962W PF:1.000 Freq:0Hz Lamp Flux:731.15x1 lm		
NAME: SF10-24V-2835-144-5000-80	TYPE:	WEIGHT:
SPEC.:	DIM.: Length=1m	SERIAL No.:
MFR.:	SUR.:	Shielding Angle:



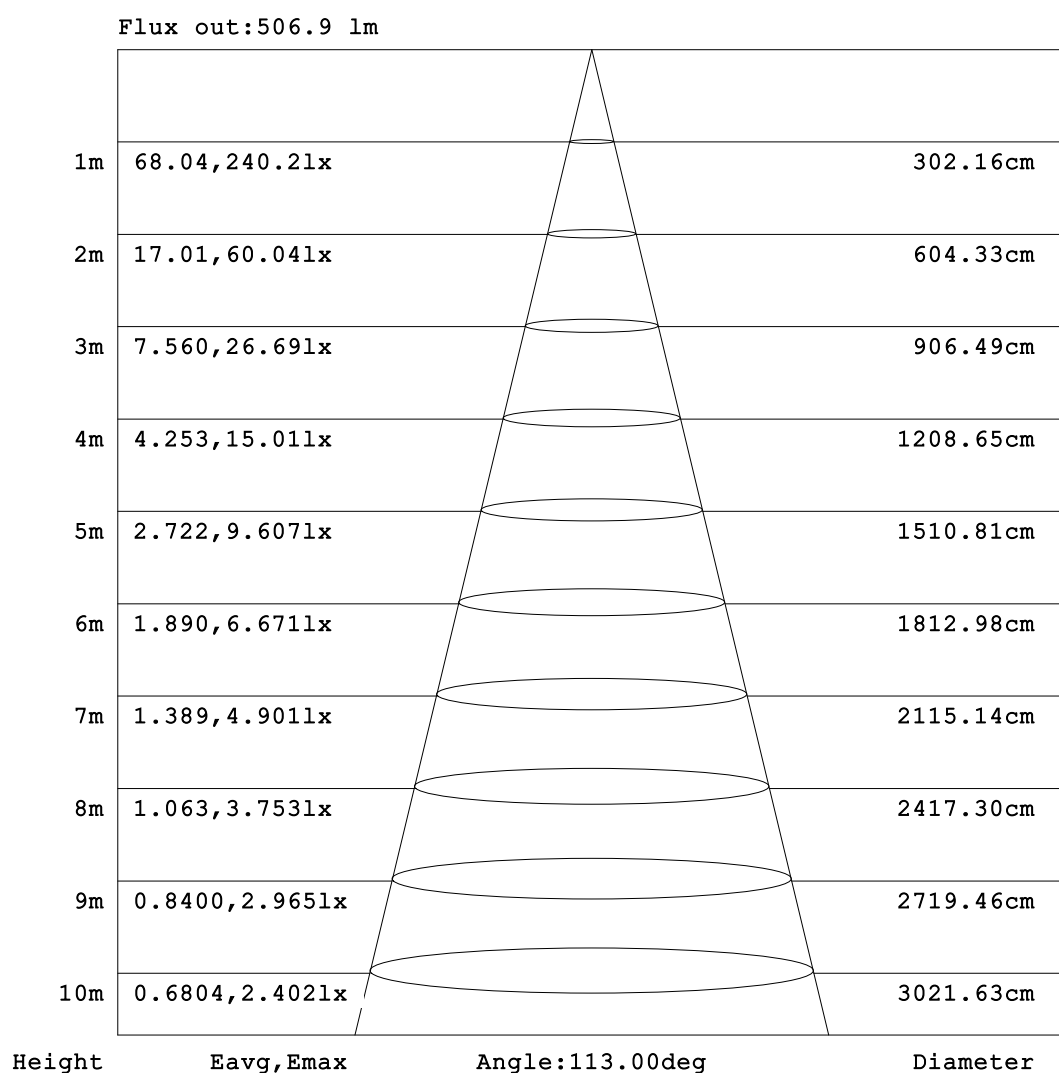
C Range: 0 - 360DEG  
C Interval: 22.5DEG  
Test Speed: HIGH  
Temperature:25.3℃  
Operators:Cloud  
Test Date:2024-11-05

γ Range: 0 - 180DEG  
γ Interval: 1.0DEG  
Test System:EVERFINE GO-2000B\_V1 SYSTEM V2.00.488  
Humidity:65.0%  
Test Distance:6.360m [K=1.0000]  
Remarks:



## AAI Figure

Test:U:24.00V I:0.4151A P:9.962W PF:1.000 Freq:0Hz Lamp Flux:731.15x1 lm		
NAME: SF10-24V-2835-144-5000-80	TYPE:	WEIGHT:
SPEC.:	DIM.: Length=1m	SERIAL No.:
MFR.:	SUR.:	Shielding Angle:



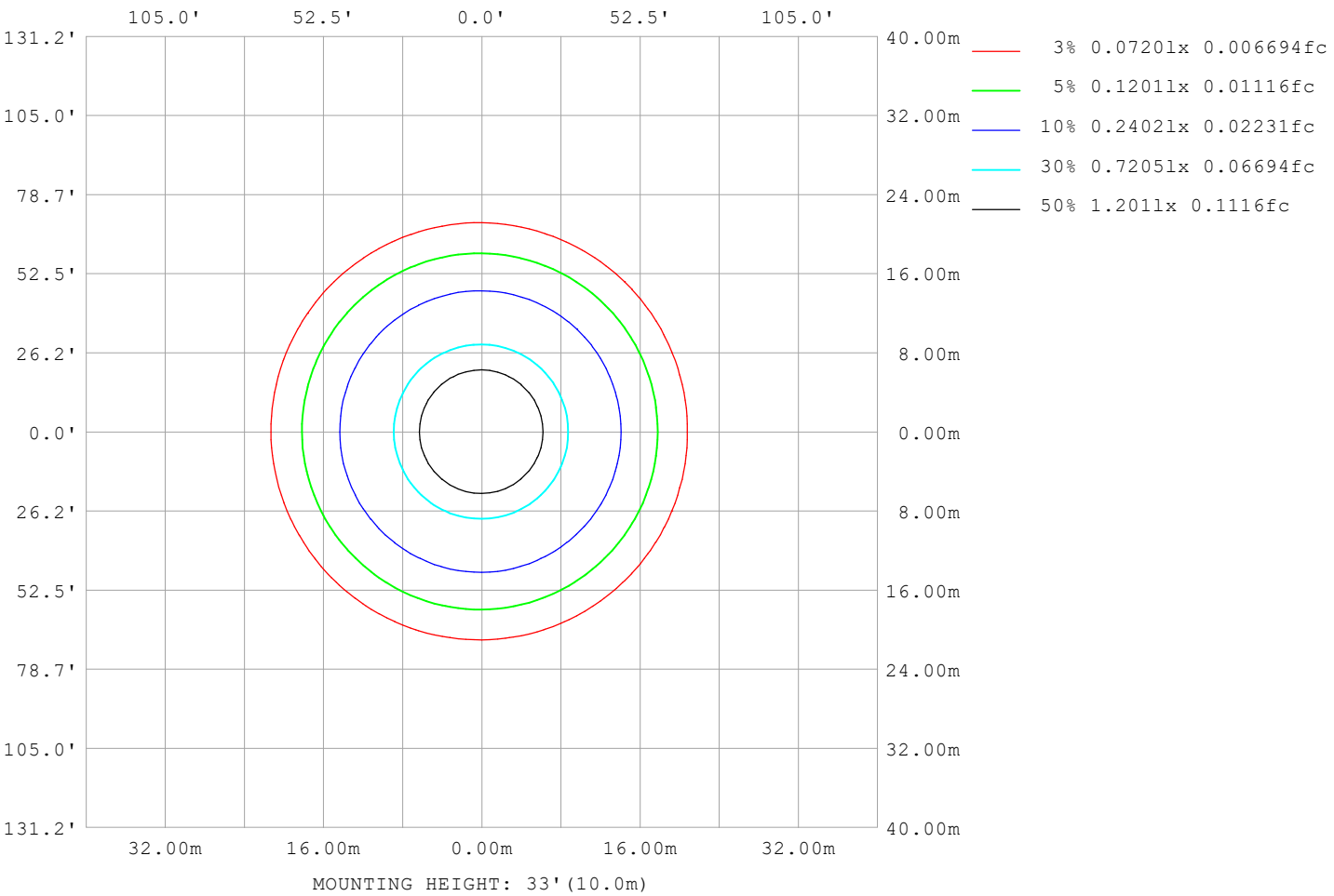
Note:The Curves indicate the illuminated area and the average illumination when the luminaire is at different distance.

C Range: 0 - 360DEG  
C Interval: 22.5DEG  
Test Speed: HIGH  
Temperature:25.3℃  
Operators:Cloud  
Test Date:2024-11-05

γ Range: 0 - 180DEG  
γ Interval: 1.0DEG  
Test System:EVERFINE GO-2000B\_V1 SYSTEM V2.00.488  
Humidity:65.0%  
Test Distance:6.360m [K=1.0000]  
Remarks:

ISOLUX DIAGRAM

Test:U:24.00V I:0.4151A P:9.962W PF:1.000 Freq:0Hz Lamp Flux:731.15x1 lm		
NAME: SF10-24V-2835-144-5000-80	TYPE:	WEIGHT:
SPEC.:	DIM.: Length=1m	SERIAL No.:
MFR.:	SUR.:	Shielding Angle:



C Range: 0 - 360DEG	γ Range: 0 - 180DEG
C Interval: 22.5DEG	γ Interval: 1.0DEG
Test Speed: HIGH	Test System:EVERFINE GO-2000B_V1 SYSTEM V2.00.488
Temperature:25.3℃	Humidity:65.0%
Operators:Cloud	Test Distance:6.360m [K=1.0000]
Test Date:2024-11-05	Remarks:

## LED Avg.L Report

Test:U:24.00V I:0.4151A P:9.962W PF:1.000 Freq:0Hz Lamp Flux:731.15x1 lm		
NAME: SF10-24V-2835-144-5000-80	TYPE:	WEIGHT:
SPEC.:	DIM.: Length=1m	SERIAL No.:
MFR.:	SUR.:	Shielding Angle:

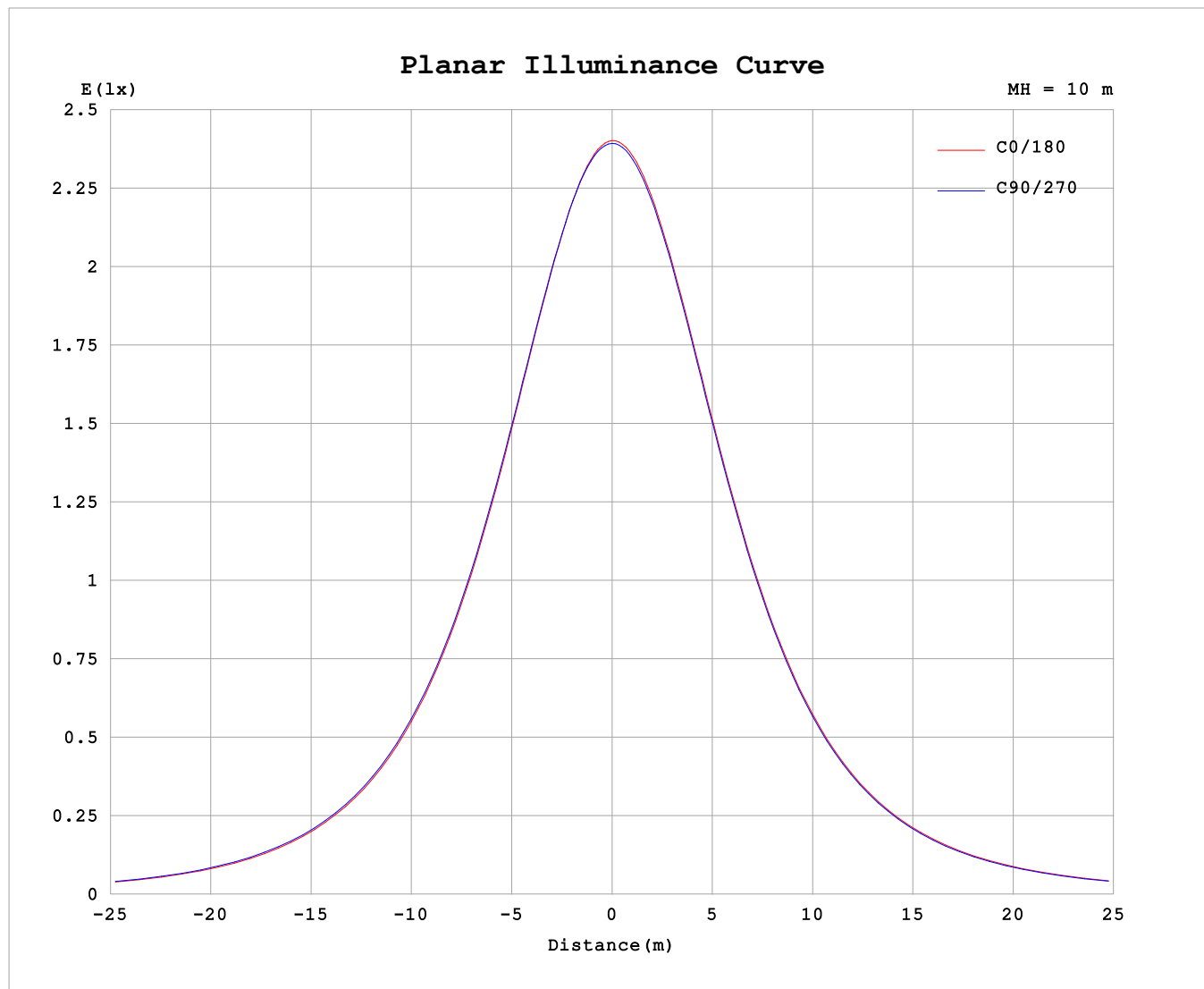
AvgL	cd/m2
L_0~180 (65) av	15115
L_0~180 (75) av	14769
L_0~180 (85) av	15548
L_90~270 (65) av	15251
L_90~270 (75) av	14894
L_90~270 (85) av	15230
L_45 (65) av	15194
L_45 (75) av	14849
L_45 (85) av	15304

Standard: GB/T 29293-2012

C Range: 0 - 360DEG  
C Interval: 22.5DEG  
Test Speed: HIGH  
Temperature:25.3℃  
Operators:Cloud  
Test Date:2024-11-05

γ Range: 0 - 180DEG  
γ Interval: 1.0DEG  
Test System:EVERFINE GO-2000B\_V1 SYSTEM V2.00.488  
Humidity:65.0%  
Test Distance:6.360m [K=1.0000]  
Remarks:

## Planar Illuminance Curve



C Range: 0 - 360DEG  
C Interval: 22.5DEG  
Test Speed: HIGH  
Temperature: 25.3°C  
Operators: Cloud  
Test Date: 2024-11-05

$\gamma$  Range: 0 - 180DEG  
 $\gamma$  Interval: 1.0DEG  
Test System: EVERFINE GO-2000B\_V1 SYSTEM V2.00.488  
Humidity: 65.0%  
Test Distance: 6.360m [K=1.0000]  
Remarks:

## LUMINOUS DISTRIBUTION INTENSITY DATA

Test:U:24.00V I:0.4151A P:9.962W PF:1.000 Freq:0Hz Lamp Flux:731.15x1 lm																	
NAME: SF10-24V-2835-144-5000-80									TYPE:						WEIGHT:		
SPEC.:									DIM.: Length=1m						SERIAL No.:		
MFR.:									SUR.:						Shielding Angle:		

Table--1

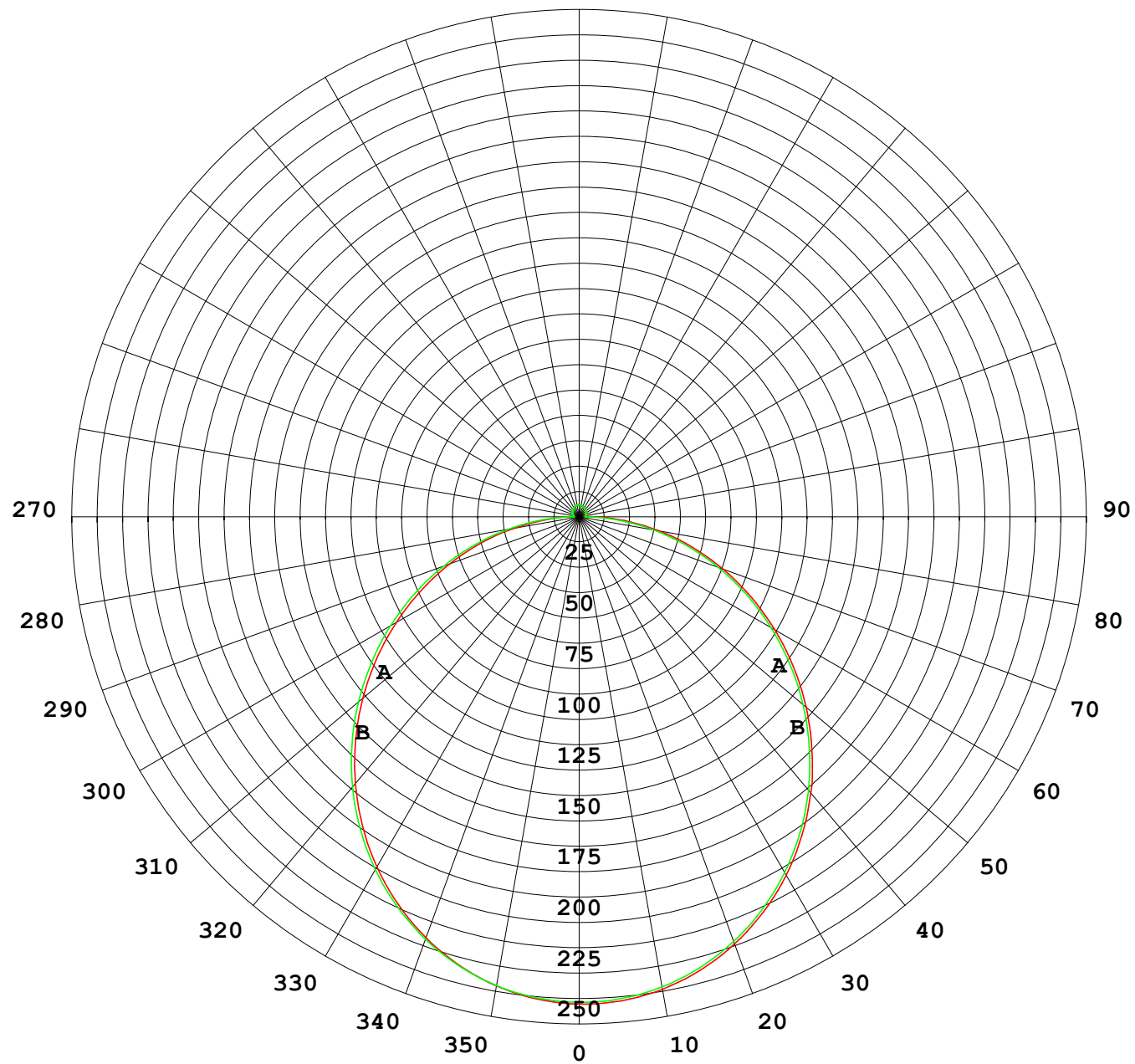
UNIT: cd

γ (DEG)	C (DEG)																
	0	22.5	45	67.5	90	112.5	135	157.5	180	202.5	225	247.5	270	292.5	315	337.5	
0	239	239	239	239	239	239	239	239	239	239	239	239	239	239	239	239	
5	238	238	238	238	238	238	239	239	239	239	239	239	239	239	238	238	
10	234	234	234	235	235	235	235	236	236	236	236	236	235	235	235	234	
15	228	228	229	229	229	230	230	230	231	231	231	231	230	230	229	229	
20	220	220	221	221	222	222	223	223	223	224	224	223	223	222	222	221	
25	210	211	211	212	212	213	214	214	214	214	215	214	214	213	212	211	
30	199	199	200	200	201	202	202	203	203	204	204	203	203	202	201	200	
35	186	186	186	188	188	189	190	191	191	191	191	191	190	189	188	186	
40	171	172	172	173	174	175	176	177	177	177	178	177	176	175	174	172	
45	155	156	156	158	158	160	160	161	162	162	162	161	161	159	158	156	
50	139	139	140	141	142	143	144	145	146	146	146	145	144	143	141	140	
55	121	122	123	124	125	126	127	128	129	129	129	128	127	125	124	123	
60	104	104	105	106	107	109	109	110	111	111	111	110	109	108	106	105	
65	85.7	86.0	86.7	88.1	89.3	90.6	91.4	92.3	93.2	93.4	93.3	92.3	91.2	89.4	88.2	86.7	
70	67.6	67.9	68.6	70.0	71.1	72.4	73.3	74.3	75.2	75.3	75.2	74.1	73.0	71.3	70.0	68.6	
75	49.7	50.1	50.7	52.0	53.1	54.4	55.4	56.5	57.3	57.4	57.1	56.1	54.9	53.2	52.0	50.7	
80	32.1	32.5	33.1	34.3	35.3	36.7	37.8	38.9	39.7	39.7	39.3	38.2	37.0	35.4	34.2	33.0	
85	15.5	15.6	15.8	16.9	17.9	19.3	20.4	21.7	22.4	22.3	21.8	20.5	19.3	17.7	16.7	16.0	
90	5.77	5.56	4.77	3.74	2.82	4.66	6.84	8.56	9.21	8.84	7.56	5.26	3.17	4.09	5.13	5.64	
95	2.91	2.93	2.93	2.97	2.99	2.99	2.94	2.95	2.75	2.85	3.01	3.09	3.12	3.09	3.01	2.77	
100	3.13	3.15	3.15	3.19	3.23	3.23	3.15	3.11	2.77	2.92	3.16	3.21	3.18	3.22	3.17	2.95	
105	3.36	3.38	3.37	3.42	3.45	3.46	3.37	3.35	2.98	3.11	3.33	3.35	3.25	3.35	3.34	3.14	
110	3.59	3.60	3.60	3.65	3.66	3.69	3.60	3.58	3.18	3.30	3.49	3.49	3.34	3.48	3.51	3.34	
115	3.81	3.82	3.81	3.84	3.86	3.91	3.83	3.81	3.39	3.50	3.68	3.67	3.47	3.62	3.67	3.53	
120	4.03	4.03	3.96	4.03	4.04	4.12	4.05	4.03	3.60	3.69	3.85	3.85	3.66	3.73	3.84	3.73	
125	4.23	4.25	4.15	4.22	4.23	4.31	4.26	4.25	3.81	3.88	4.02	4.03	3.88	3.79	4.00	3.92	
130	4.44	4.44	4.34	4.40	4.41	4.51	4.47	4.45	4.02	4.08	4.22	4.21	4.12	3.90	4.18	4.13	
135	4.62	4.64	4.53	4.58	4.60	4.70	4.67	4.66	4.24	4.30	4.42	4.41	4.40	4.13	4.36	4.33	
140	4.80	4.71	4.71	4.77	4.77	4.88	4.86	4.86	4.45	4.51	4.62	4.62	4.63	4.37	4.55	4.55	
145	4.98	4.89	4.88	4.95	4.96	5.09	5.06	5.05	4.68	4.72	4.83	4.83	4.84	4.60	4.67	4.75	
150	5.17	5.06	5.07	5.16	5.24	5.29	5.27	5.25	4.90	4.95	5.05	5.05	5.06	4.88	4.83	4.95	
155	5.34	5.25	5.25	5.41	5.42	5.47	5.45	5.44	5.13	5.17	5.26	5.27	5.28	5.16	5.05	5.13	
160	5.52	5.42	5.53	5.60	5.61	5.65	5.63	5.63	5.34	5.37	5.47	5.47	5.48	5.43	5.28	5.32	
165	5.68	5.59	5.69	5.76	5.77	5.81	5.78	5.79	5.54	5.57	5.66	5.67	5.69	5.64	5.53	5.52	
170	5.71	5.78	5.83	5.90	5.90	5.94	5.90	5.90	5.62	5.74	5.82	5.83	5.87	5.81	5.79	5.68	
175	5.79	5.93	5.94	6.00	6.01	6.03	5.99	5.98	5.76	5.88	5.94	5.95	6.00	5.95	5.93	5.86	
180	5.84	5.96	6.00	6.04	6.05	6.06	6.02	6.01	5.84	5.96	6.00	6.03	6.06	6.05	6.03	5.99	

C Range: 0 - 360DEG  
C Interval: 22.5DEG  
Test Speed: HIGH  
Temperature:25.3℃  
Operators:Cloud  
Test Date:2024-11-05

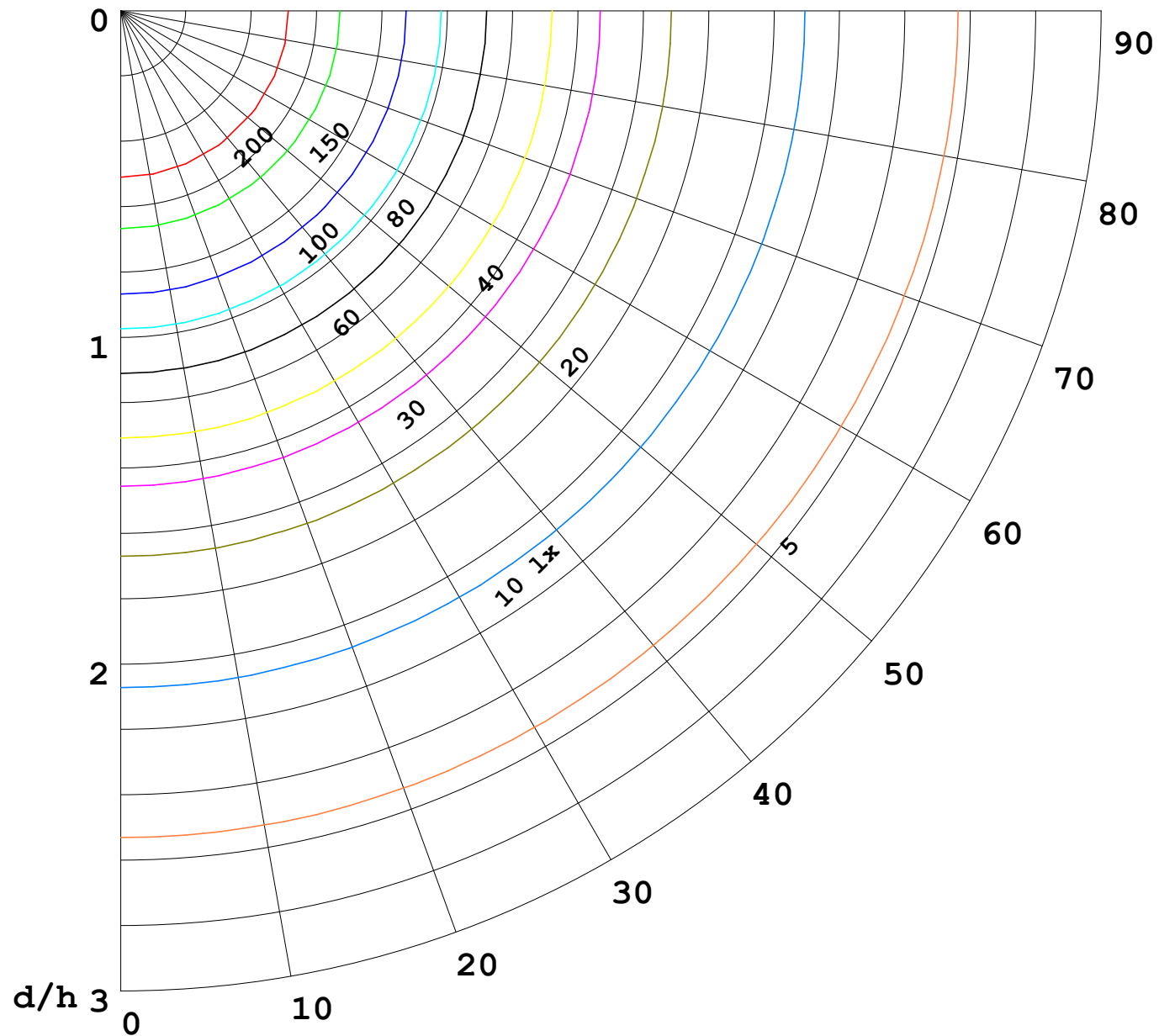
γ Range: 0 - 180DEG  
γ Interval: 1.0DEG  
Test System:EVERFINE GO-2000B\_V1 SYSTEM V2.00.488  
Humidity:65.0%  
Test Distance:6.360m [K=1.0000]  
Remarks:

I (cd)



1000 lm

$\kappa = 1$



F = 1000 lm  
 K = 0.7  
 Hcc = 0.8 m  
 Hfc = 0.0 m  
 Eave = 100 lx

	Pcc	Pw	Pfc
—————	70	50	30
—————	50	30	20

