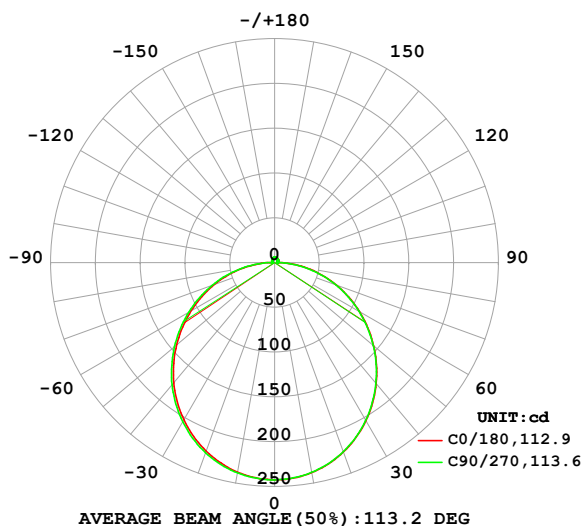


## LUMINAIRE PHOTOMETRIC TEST REPORT

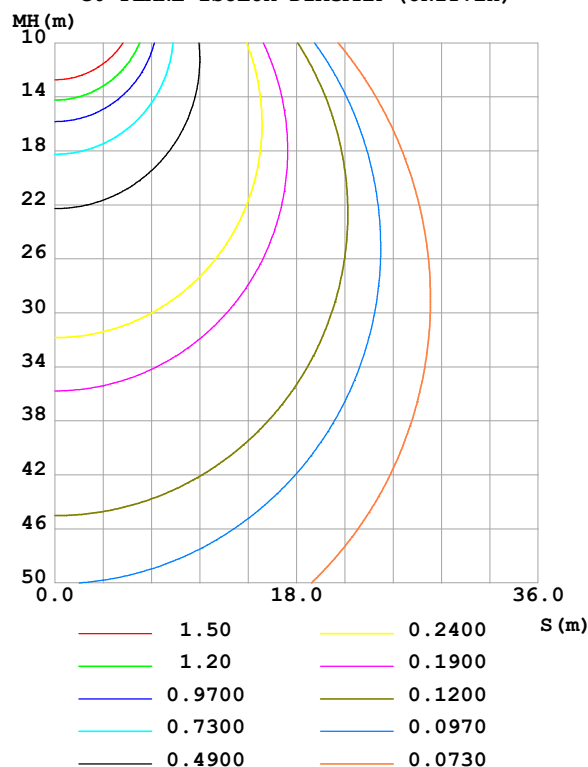
Test:U:24.00V I:0.4157A P:9.977W PF:1.000 Freq:0Hz Lamp Flux:740.537x1 lm		
NAME: SF10-24V-2835-144-4000-80	TYPE:	WEIGHT:
SPEC.:	DIM.: Length=1m	SERIAL No.:
MFR.:	SUR.:	Shielding Angle:

DATA OF LAMP		PHOTOMETRIC DATA Eff: 74.23 lm/W			
MODEL		I <sub>max</sub> (cd)	242.6	S/MH(C0/180)	1.24
NOMINAL POWER(W)		LOR(%)	100.0	S/MH(C90/270)	1.26
RATED VOLTAGE(V)		TOTAL FLUX(lm)	740.54	η UP,DN(C0-180)	1.8,48.0
NOMINAL FLUX(lm)	740.537	CIE CLASS	DIRECT	η UP,DN(C180-360)	1.8,48.4
LAMPS INSIDE	1	η up (%)	3.6	CIBSE SHR NOM	1.25
TEST VOLTAGE(V)		η down (%)	96.4	CIBSE SHR MAX	1.35

LUMINOUS INTENSITY DISTRIBUTION DIAGRAM



C0 PLANE ISOLUX DIAGRAM (UNIT:lx)



C Range: 0 - 360DEG  
C Interval: 22.5DEG  
Test Speed: HIGH  
Temperature: 25.3 °C  
Operators: Cloud  
Test Date: 2024-10-25

γ Range: 0 - 180DEG  
γ Interval: 1.0DEG  
Test System: EVERFINE GO-2000B\_V1 SYSTEM V2.00.488  
Humidity: 65.0%  
Test Distance: 6.360m [K=1.0000]  
Remarks:

## ZONAL FLUX DIAGRAM

## ZONAL FLUX DIAGRAM:

$\gamma$	C0	C45	C90	C135	C180	C225	C270	C315	$\gamma$	$\Phi$ zone	$\Phi$ total	%lum, lamp
10	238.2	238.2	237.8	237.6	237.6	238.1	238.5	238.7	0- 10	22.94	22.94	3.1,3.1
20	225.0	225.1	224.6	224.0	224.0	225.0	225.8	226.1	10- 20	65.62	88.56	12,12
30	204.1	204.2	203.6	202.7	202.7	204.1	205.2	205.5	20- 30	99.24	187.8	25.4,25.4
40	176.6	176.7	176.1	175.0	175.3	176.8	178.2	178.4	30- 40	119.5	307.3	41.5,41.5
50	144.5	144.5	143.8	142.5	142.8	144.4	146.0	146.2	40- 50	124.2	431.5	58.3,58.3
60	109.5	109.4	109.0	107.4	107.7	109.1	110.8	111.1	50- 60	113.6	545.0	73.6,73.6
70	73.38	73.19	72.66	71.11	71.45	72.75	74.17	74.75	60- 70	90.22	635.2	85.8,85.8
80	37.47	37.17	36.19	35.02	35.48	36.39	37.53	38.43	70- 80	57.83	693.1	93.6,93.6
90	7.210	5.682	2.950	4.733	6.081	5.415	3.338	6.296	80- 90	21.13	714.2	96.4,96.4
100	3.194	3.194	3.267	3.271	2.962	3.478	3.287	3.413	90-100	3.702	717.9	96.9,96.9
110	3.678	3.659	3.703	3.759	3.397	3.807	3.464	3.653	100-110	3.654	721.6	97.4,97.4
120	4.124	3.988	4.096	4.204	3.817	4.118	3.921	3.748	110-120	3.799	725.4	97.9,97.9
130	4.544	4.360	4.468	4.623	4.243	4.459	4.345	4.133	120-130	3.759	729.1	98.5,98.5
140	4.913	4.738	4.830	5.028	4.675	4.840	4.770	4.702	130-140	3.558	732.7	98.9,98.9
150	5.278	5.102	5.329	5.424	5.112	5.247	5.203	5.133	140-150	3.141	735.8	99.4,99.4
160	5.641	5.633	5.722	5.794	5.538	5.642	5.631	5.578	150-160	2.509	738.3	99.7,99.7
170	5.791	5.953	6.040	6.057	5.728	5.977	6.009	5.956	160-170	1.642	740.0	99.9,99.9
180	5.938	6.138	6.196	6.176	5.938	6.144	6.196	6.184	170-180	0.5762	740.5	100,100
DEG	LUMINOUS INTENSITY:cd									UNIT:lm		

Conical surface Flux(90deg): 369.79 lm

%lum = 49.9%

%lamp = 49.9%

Conical surface Flux(130deg): 593.71 lm

%lum = 80.2%

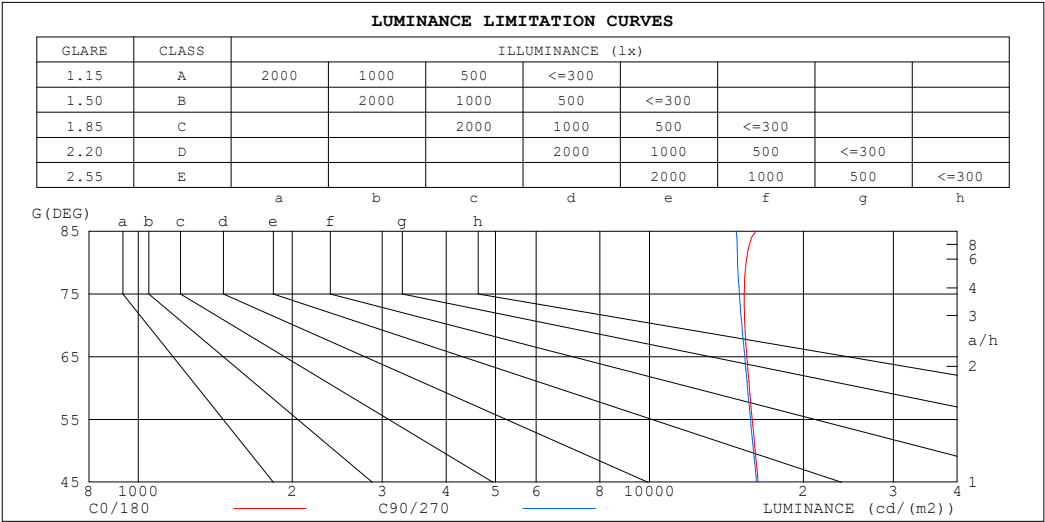
%lamp = 80.2%

C Range: 0 - 360DEG  
 C Interval: 22.5DEG  
 Test Speed: HIGH  
 Temperature:25.3℃  
 Operators:Cloud  
 Test Date:2024-10-25

$\gamma$  Range: 0 - 180DEG  
 $\gamma$  Interval: 1.0DEG  
 Test System:EVERFINE GO-2000B\_V1 SYSTEM V2.00.488  
 Humidity:65.0%  
 Test Distance:6.360m [K=1.0000]  
 Remarks:

LUMINANCE LIMITATION CURVES

Test:U:24.00V I:0.4157A P:9.977W PF:1.000 Freq:0Hz Lamp Flux:740.537x1 lm		
NAME: SF10-24V-2835-144-4000-80	TYPE:	WEIGHT:
SPEC.:	DIM.: Length=1m	SERIAL No.:
MFR.:	SUR.:	Shielding Angle:



LUMINANCE cd/(m2)		
G (DEG)	C0/180	C90/270
85	16169	14787
80	15455	14875
75	15323	14984
70	15367	15160
65	15503	15357
60	15681	15551
55	15884	15762
50	16100	15971
45	16310	16189

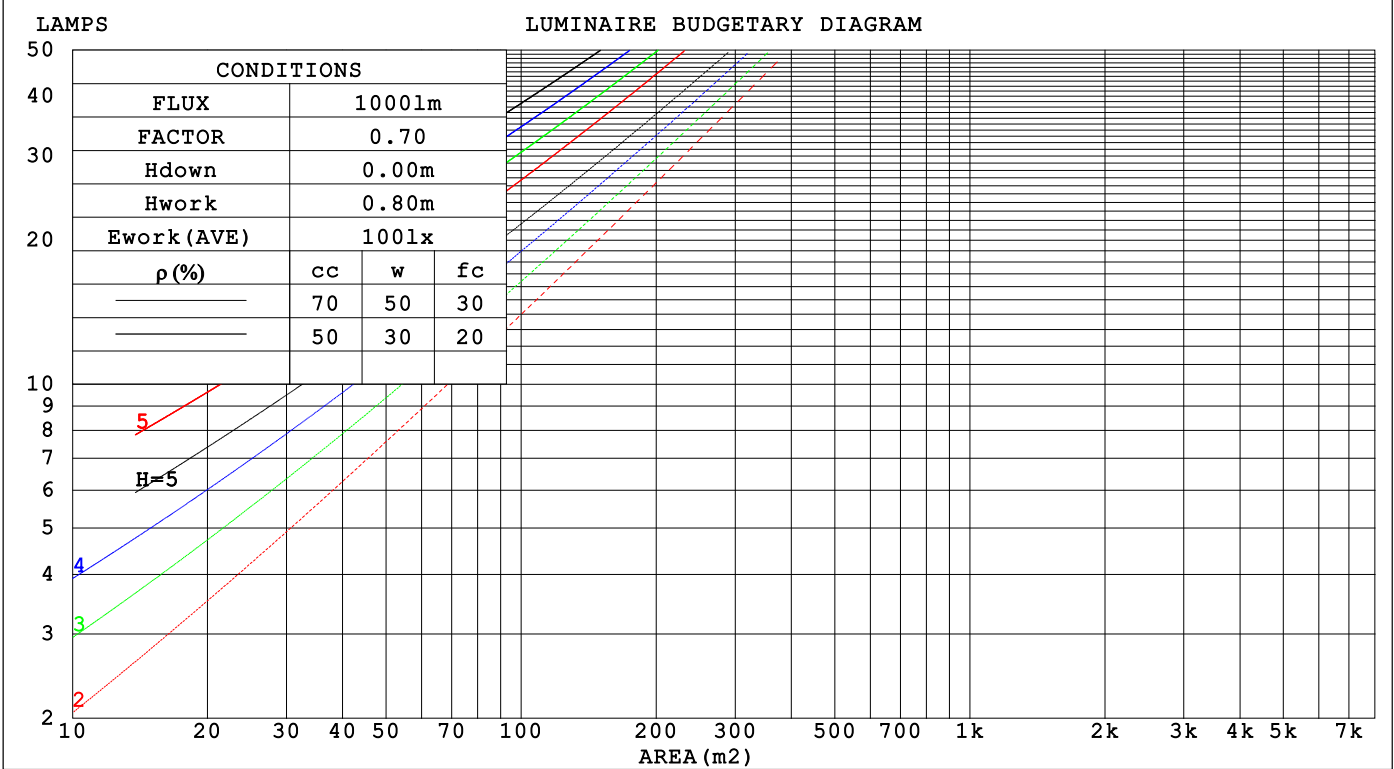
C Range: 0 - 360DEG  
C Interval: 22.5DEG  
Test Speed: HIGH  
Temperature:25.3℃  
Operators:Cloud  
Test Date:2024-10-25

γ Range: 0 - 180DEG  
γ Interval: 1.0DEG  
Test System:EVERFINE GO-2000B\_V1 SYSTEM V2.00.488  
Humidity:65.0%  
Test Distance:6.360m [K=1.0000]  
Remarks:

CU AND LUMINAIRE BUDGETARY ESTIMATE DIAGRAM

Test:U:24.00V I:0.4157A P:9.977W PF:1.000 Freq:0Hz Lamp Flux:740.537x1 lm		
NAME: SF10-24V-2835-144-4000-80	TYPE:	WEIGHT:
SPEC.:	DIM.: Length=1m	SERIAL No.:
MFR.:	SUR.:	Shielding Angle:

pcc	80%			70%			50%			30%			10%			0
p <sub>w</sub>	50%	30%	10%	50%	30%	10%	50%	30%	10%	50%	30%	10%	50%	30%	10%	0
p <sub>fc</sub>	20%			20%			20%			20%			20%			0
RCR	RCR:Room Cavity Ratio                      Coefficients of Utilization(CU)															
0.0	1.18	1.18	1.18	1.15	1.15	1.15	1.09	1.09	1.09	1.04	1.04	1.04	.99	.99	.99	.96
1.0	1.02	.98	.94	.90	.96	.92	.95	.91	.88	.90	.87	.85	.86	.84	.82	.79
2.0	.89	.82	.76	.86	.80	.74	.82	.77	.72	.78	.74	.70	.75	.71	.68	.66
3.0	.78	.69	.63	.76	.68	.62	.72	.66	.60	.69	.63	.59	.66	.61	.57	.55
4.0	.69	.60	.53	.67	.59	.52	.64	.57	.51	.61	.55	.50	.59	.53	.49	.47
5.0	.61	.52	.45	.60	.51	.45	.57	.50	.44	.55	.48	.43	.53	.47	.42	.40
6.0	.55	.46	.39	.54	.45	.39	.52	.44	.39	.50	.43	.38	.48	.42	.37	.35
7.0	.50	.41	.35	.49	.40	.35	.47	.39	.34	.45	.39	.34	.44	.38	.33	.31
8.0	.45	.37	.31	.45	.36	.31	.43	.36	.30	.41	.35	.30	.40	.34	.30	.28
9.0	.42	.33	.28	.41	.33	.28	.40	.32	.27	.38	.32	.27	.37	.31	.27	.25
10.0	.38	.30	.25	.38	.30	.25	.37	.30	.25	.35	.29	.24	.34	.28	.24	.22

C Range: 0 - 360DEG  
C Interval: 22.5DEG  
Test Speed: HIGH  
Temperature:25.3℃  
Operators:Cloud  
Test Date:2024-10-25γ Range: 0 - 180DEG  
γ Interval: 1.0DEG  
Test System:EVERFINE GO-2000B\_V1 SYSTEM V2.00.488  
Humidity:65.0%  
Test Distance:6.360m [K=1.0000]  
Remarks:

## WEC AND CCEC

Test:U:24.00V I:0.4157A P:9.977W PF:1.000 Freq:0Hz Lamp Flux:740.537x1 lm		
NAME: SF10-24V-2835-144-4000-80	TYPE:	WEIGHT:
SPEC.:	DIM.: Length=1m	SERIAL No.:
MFR.:	SUR.:	Shielding Angle:

pcc	80%			70%			50%			30%			10%			0														
pw	50%	30%	10%	50%	30%	10%	50%	30%	10%	50%	30%	10%	50%	30%	10%	0														
pfc	20%			20%			20%			20%			20%			0														
RCR	RCR:Room Cavity Ratio															Wall Exitance Coefficients(WEC)														
0.0																														
1.0	.325	.185	.058	.317	.181	.057	.301	.173	.055	.287	.166	.053	.274	.159	.051															
2.0	.300	.165	.050	.293	.161	.050	.279	.155	.048	.267	.150	.047	.255	.144	.046															
3.0	.275	.147	.044	.269	.144	.043	.257	.139	.042	.246	.135	.041	.235	.130	.040															
4.0	.253	.131	.039	.247	.129	.038	.236	.125	.037	.226	.121	.037	.217	.118	.036															
5.0	.233	.119	.034	.228	.117	.034	.218	.114	.033	.209	.110	.033	.201	.107	.032															
6.0	.215	.108	.031	.211	.106	.031	.202	.104	.030	.194	.101	.030	.186	.098	.029															
7.0	.200	.099	.028	.196	.098	.028	.188	.095	.027	.181	.093	.027	.174	.090	.027															
8.0	.187	.091	.026	.183	.090	.025	.176	.088	.025	.169	.086	.025	.163	.084	.024															
9.0	.175	.084	.024	.171	.083	.023	.165	.081	.023	.159	.080	.023	.153	.078	.022															
10.0	.164	.079	.022	.161	.078	.022	.155	.076	.021	.150	.074	.021	.144	.073	.021															

pcc	80%			70%			50%			30%			10%			0
pw	50%	30%	10%	50%	30%	10%	50%	30%	10%	50%	30%	10%	50%	30%	10%	0
pfc	20%			20%			20%			20%			20%			0
RCR	RCR:Room Cavity Ratio						Ceiling Cavity Exitance Coefficients (CCEC)									
0.0	.218	.218	.218	.186	.186	.186	.127	.127	.127	.073	.073	.073	.023	.023	.023	
1.0	.209	.183	.161	.179	.157	.138	.122	.108	.096	.070	.063	.056	.023	.020	.018	
2.0	.201	.159	.124	.172	.137	.108	.118	.095	.075	.068	.055	.044	.022	.018	.014	
3.0	.193	.142	.101	.166	.122	.088	.114	.085	.062	.066	.050	.036	.021	.016	.012	
4.0	.186	.129	.086	.159	.111	.074	.109	.078	.052	.063	.045	.031	.020	.015	.010	
5.0	.178	.119	.075	.153	.103	.065	.105	.072	.046	.061	.042	.027	.020	.014	.009	
6.0	.171	.110	.067	.147	.096	.058	.101	.067	.041	.059	.039	.024	.019	.013	.008	
7.0	.164	.103	.061	.141	.090	.053	.097	.063	.038	.057	.037	.022	.018	.012	.007	
8.0	.157	.098	.057	.135	.085	.049	.094	.059	.035	.055	.035	.021	.018	.012	.007	
9.0	.151	.093	.053	.130	.081	.046	.090	.057	.033	.053	.033	.020	.017	.011	.007	
10.0	.146	.088	.051	.125	.077	.044	.087	.054	.031	.051	.032	.019	.016	.011	.006	

C Range: 0 - 360DEG  
C Interval: 22.5DEG  
Test Speed: HIGH  
Temperature:25.3℃  
Operators:Cloud  
Test Date:2024-10-25

γ Range: 0 - 180DEG  
γ Interval: 1.0DEG  
Test System:EVERFINE GO-2000B\_V1 SYSTEM V2.00.488  
Humidity:65.0%  
Test Distance:6.360m [K=1.0000]  
Remarks:

UGR(Unified Glare Rating) Table

Test:U:24.00V I:0.4157A P:9.977W PF:1.000 Freq:0Hz Lamp Flux:740.537x1 lm											
NAME: SF10-24V-2835-144-4000-80					TYPE:			WEIGHT:			
SPEC.:					DIM.: Length=1m			SERIAL No.:			
MFR.:					SUR.:			Shielding Angle:			
ceiling/cavity	0.7	0.7	0.5	0.5	0.3	0.7	0.7	0.5	0.5	0.3	
walls	0.5	0.3	0.5	0.3	0.3	0.5	0.3	0.5	0.3	0.3	
working plane	0.2	0.2	0.2	0.2	0.2	0.2	0.2	0.2	0.2	0.2	
Room dimensions		Viewed crosswise				Viewed endwise					
x = 2H y = 2H	24.5	26.0	24.8	26.2	26.5	24.5	26.0	24.8	26.2	26.5	
	3H	26.2	27.6	26.5	27.9	28.2	26.1	27.5	26.5	27.8	28.1
	4H	26.9	28.2	27.3	28.6	28.9	26.9	28.2	27.2	28.5	28.8
	6H	27.6	28.8	28.0	29.1	29.5	27.5	28.7	27.9	29.1	29.4
	8H	27.8	29.0	28.2	29.4	29.7	27.7	28.9	28.1	29.3	29.6
	12H	28.0	29.2	28.4	29.5	29.9	27.9	29.0	28.3	29.4	29.8
4H 2H	25.1	26.4	25.5	26.8	27.1	25.1	26.4	25.5	26.7	27.1	
	3H	27.0	28.2	27.4	28.5	28.9	27.0	28.1	27.4	28.5	28.9
	4H	27.9	29.0	28.3	29.4	29.8	27.9	28.9	28.3	29.3	29.7
	6H	28.7	29.6	29.2	30.1	30.5	28.6	29.6	29.1	30.0	30.4
	8H	29.0	29.9	29.5	30.3	30.8	28.9	29.8	29.4	30.2	30.7
	12H	29.3	30.1	29.8	30.5	31.0	29.2	30.0	29.6	30.4	30.9
8H 4H	28.2	29.1	28.7	29.6	30.0	28.2	29.1	28.7	29.5	30.0	
	6H	29.2	29.9	29.7	30.4	30.9	29.2	29.9	29.7	30.3	30.9
	8H	29.7	30.3	30.2	30.8	31.3	29.6	30.2	30.1	30.7	31.2
	12H	30.0	30.6	30.6	31.1	31.7	29.9	30.5	30.4	31.0	31.5
12H 4H	28.3	29.1	28.8	29.5	30.0	28.2	29.0	28.7	29.5	30.0	
	6H	29.3	30.0	29.8	30.5	31.0	29.3	29.9	29.8	30.4	30.9
	8H	29.8	30.4	30.3	30.9	31.4	29.7	30.3	30.3	30.8	31.3
Variations with the observer position at spacings(CIE Pub.117):											
S = 1.0H	+ 0.1 / - 0.2					+ 0.1 / - 0.2					
1.5H	+ 0.2 / - 0.3					+ 0.2 / - 0.3					
2.0H	+ 0.1 / - 0.3					+ 0.1 / - 0.3					

CIE Pub.117, 740.5 lm Total Lamp Luminous Flux Correct (8log(F/F0) = -1.0)  
Area: 0.014 m2

C Range: 0 - 360DEG  
C Interval: 22.5DEG  
Test Speed: HIGH  
Temperature:25.3℃  
Operators:Cloud  
Test Date:2024-10-25

γ Range: 0 - 180DEG  
γ Interval: 1.0DEG  
Test System:EVERFINE GO-2000B\_V1 SYSTEM V2.00.488  
Humidity:65.0%  
Test Distance:6.360m [K=1.0000]  
Remarks:

## UTILIZATION FACTORS TABLE

Test:U:24.00V I:0.4157A P:9.977W PF:1.000 Freq:0Hz Lamp Flux:740.537x1 lm		
NAME: SF10-24V-2835-144-4000-80	TYPE:	WEIGHT:
SPEC.:	DIM.: Length=1m	SERIAL No.:
MFR.:	SUR.:	Shielding Angle:

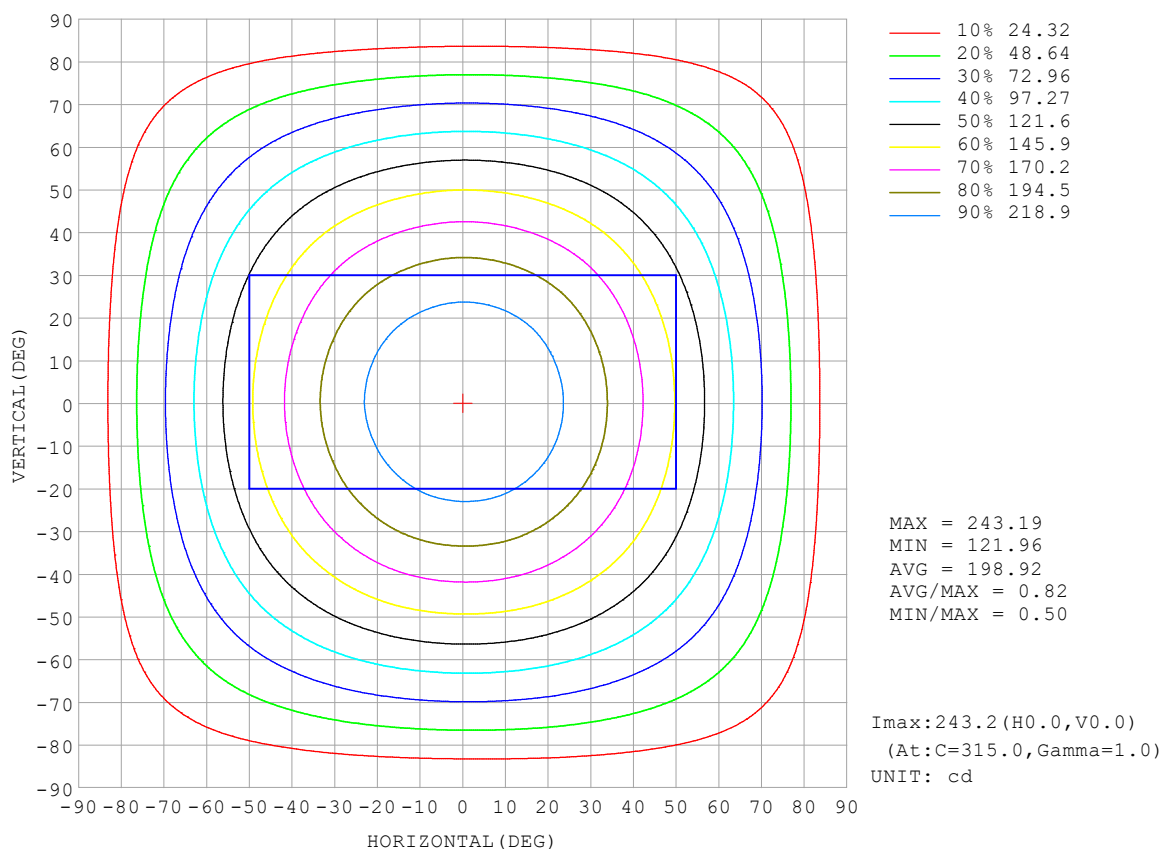
REFLECTANCE										
Ceiling	0.8	0.8	0.8	0.7	0.7	0.7	0.5	0.5	0.5	0
Walls	0.7	0.5	0.3	0.7	0.5	0.3	0.7	0.5	0.3	0
Working plane	0.2	0.2	0.2	0.2	0.2	0.2	0.2	0.2	0.2	0
ROOM INDEX	UTILIZATION FACTORS (PERCENT) $k(RI) \times RCR = 5$									
$k = 0.60$	56	44	37	55	44	37	53	43	37	30
0.80	66	54	46	64	53	46	62	52	45	38
1.00	74	62	55	72	62	55	70	63	54	46
1.25	81	70	63	79	69	62	76	67	61	53
1.50	86	76	68	84	75	68	81	72	66	58
2.00	93	84	77	91	82	76	87	80	74	66
2.50	97	89	82	95	87	81	90	84	79	70
3.00	100	93	87	98	91	86	93	88	83	74
4.00	104	98	93	102	96	92	97	92	89	79
5.00	107	102	97	104	100	96	99	95	92	82
ROOM INDEX	UF (total)									Direct
According to DIN EN 13032-2 2004			Suspended					SHRNOM = 1.25		

C Range: 0 - 360DEG  
 C Interval: 22.5DEG  
 Test Speed: HIGH  
 Temperature: 25.3°C  
 Operators: Cloud  
 Test Date: 2024-10-25

γ Range: 0 - 180DEG  
 γ Interval: 1.0DEG  
 Test System: EVERFINE GO-2000B\_V1 SYSTEM V2.00.488  
 Humidity: 65.0%  
 Test Distance: 6.360m [K=1.0000]  
 Remarks:

## ISOCANDELA DIAGRAM

Test:U:24.00V I:0.4157A P:9.977W PF:1.000 Freq:0Hz Lamp Flux:740.537x1 lm		
NAME: SF10-24V-2835-144-4000-80	TYPE:	WEIGHT:
SPEC.:	DIM.: Length=1m	SERIAL No.:
MFR.:	SUR.:	Shielding Angle:



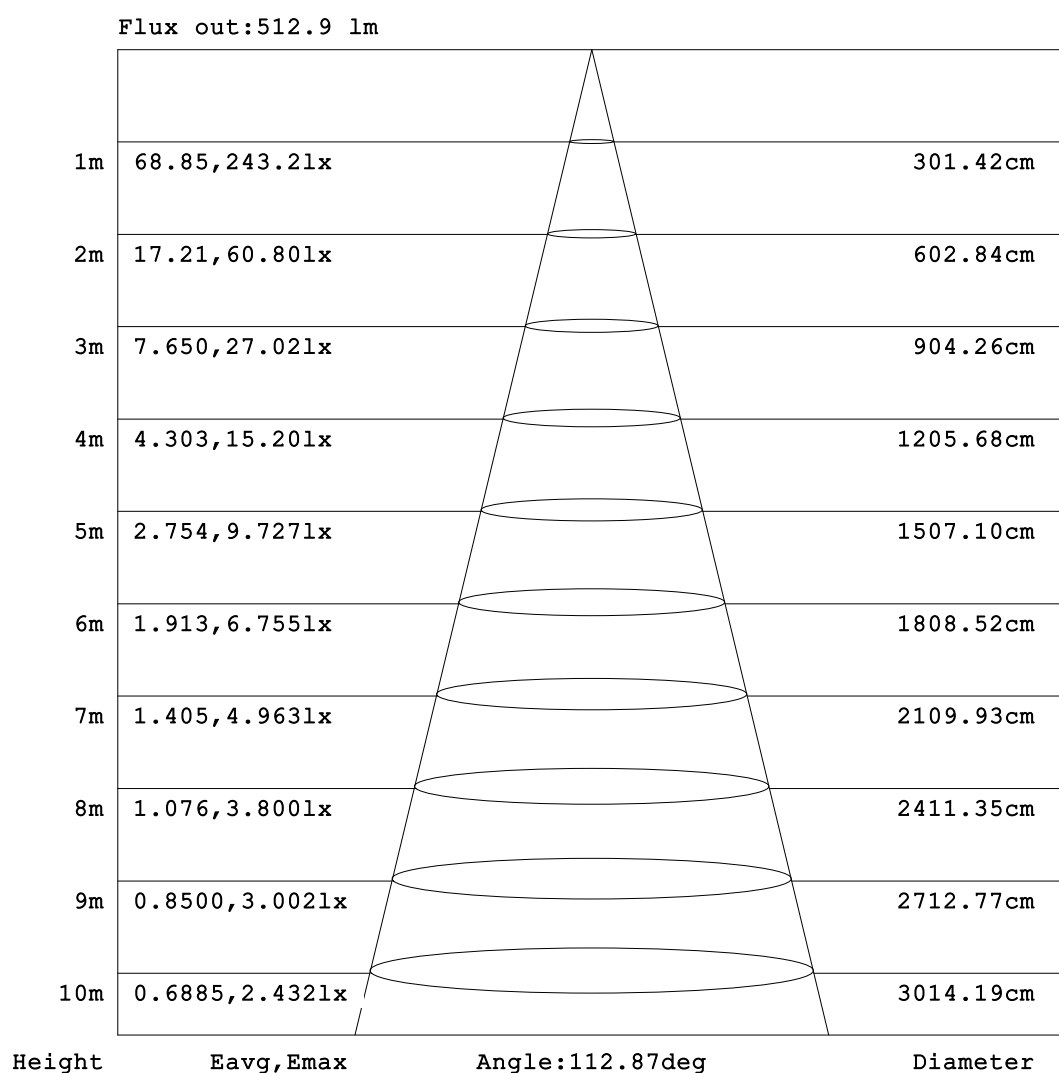
C Range: 0 - 360DEG  
C Interval: 22.5DEG  
Test Speed: HIGH  
Temperature:25.3℃  
Operators:Cloud  
Test Date:2024-10-25

γ Range: 0 - 180DEG  
γ Interval: 1.0DEG  
Test System:EVERFINE GO-2000B\_V1 SYSTEM V2.00.488  
Humidity:65.0%  
Test Distance:6.360m [K=1.0000]  
Remarks:



## AAI Figure

Test:U:24.00V I:0.4157A P:9.977W PF:1.000 Freq:0Hz Lamp Flux:740.537x1 lm		
NAME: SF10-24V-2835-144-4000-80	TYPE:	WEIGHT:
SPEC.:	DIM.: Length=1m	SERIAL No.:
MFR.:	SUR.:	Shielding Angle:



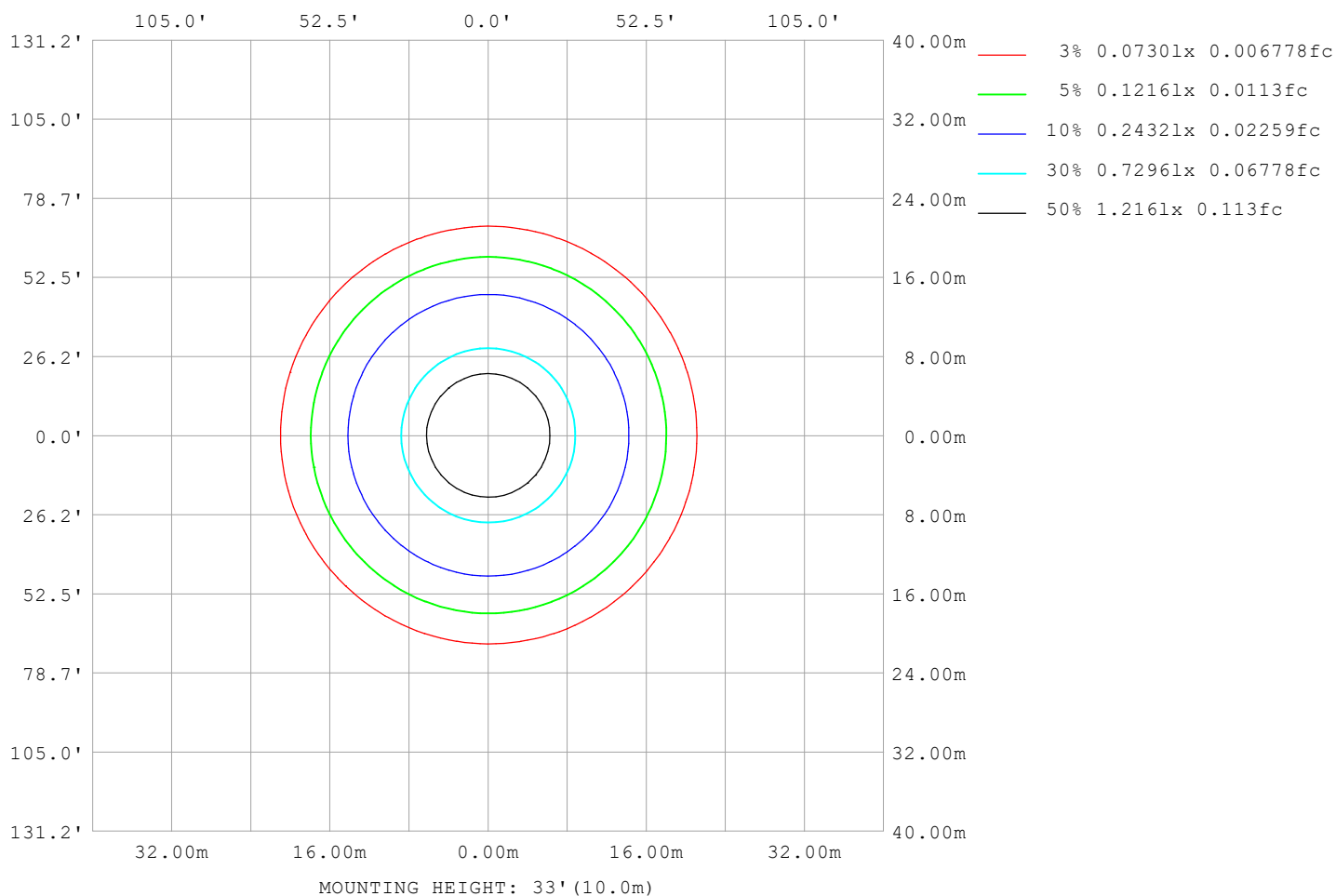
Note: The Curves indicate the illuminated area and the average illumination when the luminaire is at different distance.

C Range: 0 - 360DEG  
C Interval: 22.5DEG  
Test Speed: HIGH  
Temperature: 25.3 °C  
Operators: Cloud  
Test Date: 2024-10-25

γ Range: 0 - 180DEG  
γ Interval: 1.0DEG  
Test System: EVERFINE GO-2000B\_V1 SYSTEM V2.00.488  
Humidity: 65.0%  
Test Distance: 6.360m [K=1.0000]  
Remarks:

## ISOLUX DIAGRAM

Test:U:24.00V I:0.4157A P:9.977W PF:1.000 Freq:0Hz Lamp Flux:740.537x1 lm		
NAME: SF10-24V-2835-144-4000-80	TYPE:	WEIGHT:
SPEC.:	DIM.: Length=1m	SERIAL No.:
MFR.:	SUR.:	Shielding Angle:



C Range: 0 - 360DEG  
C Interval: 22.5DEG  
Test Speed: HIGH  
Temperature: 25.3°C  
Operators: Cloud  
Test Date: 2024-10-25

γ Range: 0 - 180DEG  
γ Interval: 1.0DEG  
Test System: EVERFINE GO-2000B\_V1 SYSTEM V2.00.488  
Humidity: 65.0%  
Test Distance: 6.360m [K=1.0000]  
Remarks:

## LED Avg.L Report

Test:U:24.00V I:0.4157A P:9.977W PF:1.000 Freq:0Hz Lamp Flux:740.537x1 lm		
NAME: SF10-24V-2835-144-4000-80	TYPE:	WEIGHT:
SPEC.:	DIM.: Length=1m	SERIAL No.:
MFR.:	SUR.:	Shielding Angle:

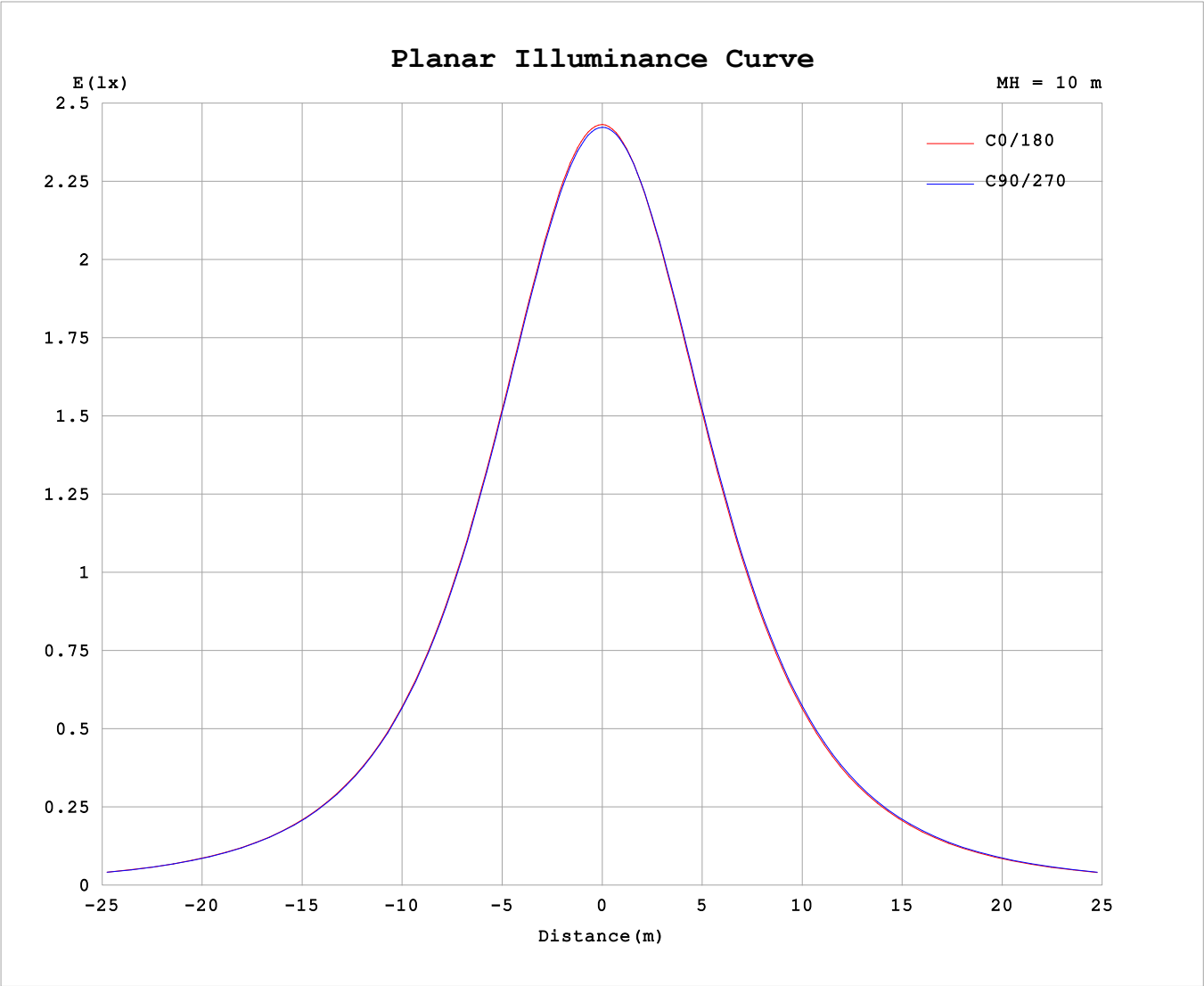
AvgL	cd/m2
L_0~180 (65) av	15304
L_0~180 (75) av	15013
L_0~180 (85) av	15367
L_90~270 (65) av	15508
L_90~270 (75) av	15201
L_90~270 (85) av	15280
L_45 (65) av	15406
L_45 (75) av	15125
L_45 (85) av	15323

Standard: GB/T 29293-2012

C Range: 0 - 360DEG  
C Interval: 22.5DEG  
Test Speed: HIGH  
Temperature:25.3℃  
Operators:Cloud  
Test Date:2024-10-25

γ Range: 0 - 180DEG  
γ Interval: 1.0DEG  
Test System:EVERFINE GO-2000B\_V1 SYSTEM V2.00.488  
Humidity:65.0%  
Test Distance:6.360m [K=1.0000]  
Remarks:

Planar Illuminance Curve



C Range: 0 - 360DEG	γ Range: 0 - 180DEG
C Interval: 22.5DEG	γ Interval: 1.0DEG
Test Speed: HIGH	Test System:EVERFINE GO-2000B_V1 SYSTEM V2.00.488
Temperature:25.3℃	Humidity:65.0%
Operators:Cloud	Test Distance:6.360m [K=1.0000]
Test Date:2024-10-25	Remarks:

## LUMINOUS DISTRIBUTION INTENSITY DATA

Test:U:24.00V I:0.4157A P:9.977W PF:1.000 Freq:0Hz Lamp Flux:740.537x1 lm																	
NAME: SF10-24V-2835-144-4000-80									TYPE:						WEIGHT:		
SPEC.:									DIM.: Length=1m						SERIAL No.:		
MFR.:									SUR.:						Shielding Angle:		

Table--1

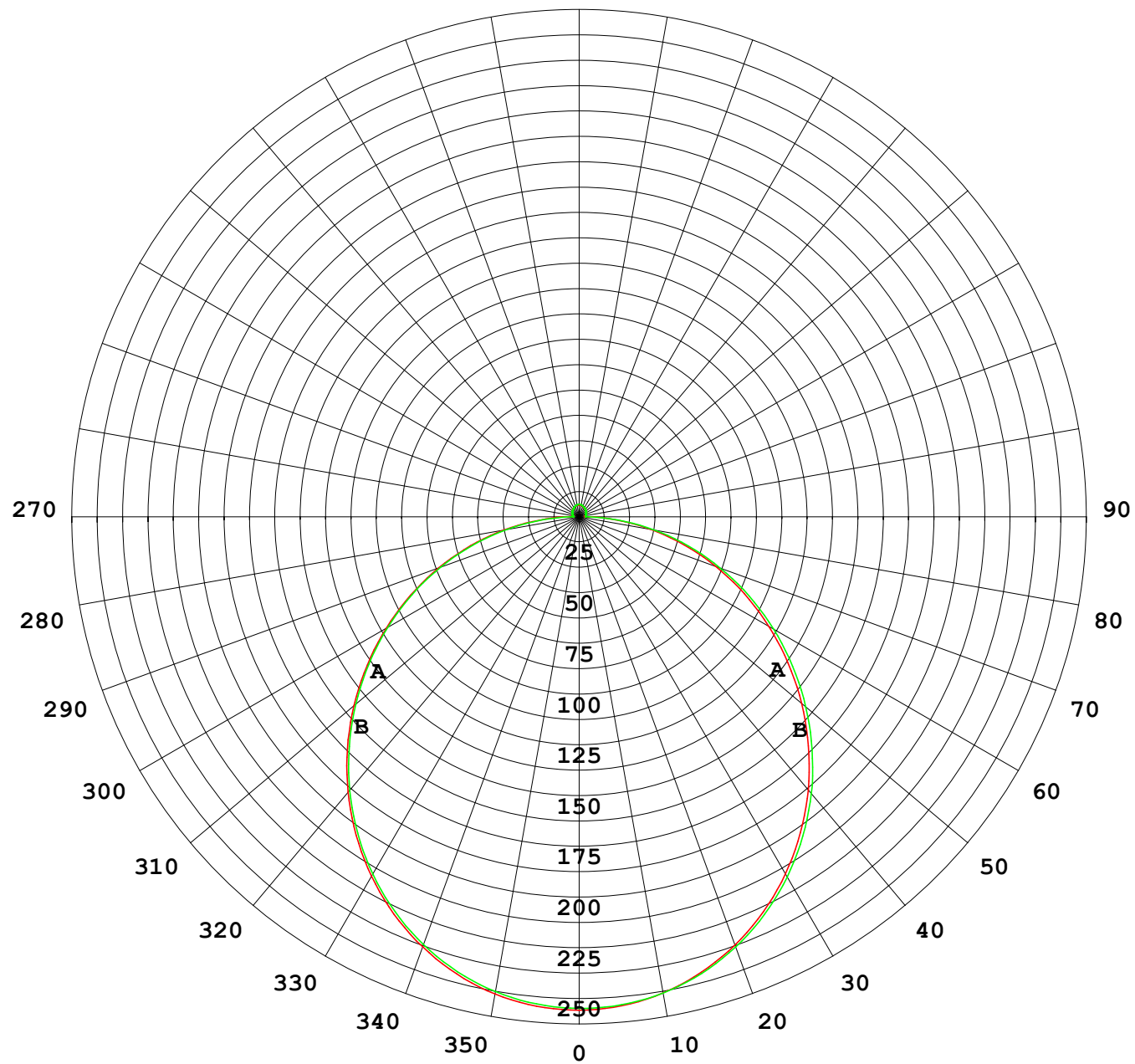
UNIT: cd

C (DEG) γ (DEG)		0	22.5	45	67.5	90	112.5	135	157.5	180	202.5	225	247.5	270	292.5	315	337.5			
0	243	243	243	243	243	243	243	243	243	243	243	243	243	243	243	243	243			
5	241	242	241	241	241	241	241	241	241	241	241	241	241	242	242	242	242			
10	238	238	238	238	238	238	238	237	238	238	238	238	238	239	239	239	239			
15	233	233	233	233	232	232	232	232	232	232	232	233	233	233	233	233	233			
20	225	225	225	225	225	224	224	224	224	224	224	225	225	226	226	226	226			
25	215	216	216	215	215	215	214	214	214	214	215	215	216	216	217	217	216			
30	204	204	204	204	204	203	203	203	203	203	203	204	205	205	205	205	205			
35	191	191	191	191	191	190	190	189	190	190	190	191	192	192	192	193	192			
40	177	177	177	177	176	176	175	175	175	176	177	177	178	178	178	178	178			
45	161	161	161	161	160	160	159	159	159	160	161	162	163	163	163	163	162			
50	144	145	144	145	144	143	143	142	143	143	144	145	146	146	146	146	145			
55	127	127	127	127	127	126	125	125	125	126	127	128	129	129	129	129	128			
60	109	110	109	109	109	108	107	107	108	108	109	110	111	111	111	111	111			
65	91.5	91.5	91.4	91.4	90.9	90.2	89.2	89.1	89.6	90.1	91.0	91.7	92.6	92.8	93.0	92.5				
70	73.4	73.4	73.2	73.2	72.7	71.9	71.1	71.0	71.5	71.9	72.7	73.3	74.2	74.5	74.7	74.3				
75	55.4	55.4	55.1	55.0	54.3	53.8	53.0	53.0	53.4	53.8	54.5	55.0	55.8	56.2	56.5	56.2				
80	37.5	37.5	37.2	37.0	36.2	35.7	35.0	35.0	35.5	35.7	36.4	36.8	37.5	38.0	38.4	38.2				
85	19.7	19.7	19.2	18.9	18.1	17.6	17.0	17.3	17.8	17.9	18.3	18.5	19.2	19.6	20.3	20.2				
90	7.21	6.92	5.68	4.14	2.95	3.65	4.73	5.75	6.08	5.95	5.41	4.24	3.34	4.58	6.30	7.15				
95	2.97	2.97	2.98	2.99	3.03	3.05	3.03	3.05	2.76	2.99	3.32	3.39	3.25	3.33	3.27	2.95				
100	3.19	3.19	3.19	3.21	3.27	3.29	3.27	3.29	2.96	3.17	3.48	3.50	3.29	3.41	3.41	3.11				
105	3.44	3.44	3.42	3.44	3.49	3.53	3.52	3.54	3.18	3.37	3.65	3.62	3.35	3.47	3.53	3.28				
110	3.68	3.67	3.66	3.71	3.70	3.77	3.76	3.78	3.40	3.56	3.81	3.77	3.46	3.56	3.65	3.45				
115	3.91	3.90	3.87	3.86	3.90	3.99	3.98	4.01	3.61	3.74	3.96	3.92	3.68	3.61	3.72	3.62				
120	4.12	4.12	3.99	4.05	4.10	4.20	4.20	4.23	3.82	3.92	4.12	4.08	3.92	3.65	3.75	3.76				
125	4.34	4.33	4.16	4.25	4.29	4.41	4.42	4.46	4.03	4.12	4.28	4.25	4.13	3.87	3.80	3.87				
130	4.54	4.54	4.36	4.44	4.47	4.61	4.62	4.66	4.24	4.31	4.46	4.42	4.35	4.26	4.13	4.02				
135	4.73	4.73	4.55	4.62	4.65	4.81	4.83	4.86	4.46	4.52	4.65	4.61	4.56	4.50	4.30	4.21				
140	4.91	4.73	4.74	4.80	4.83	5.00	5.03	5.06	4.67	4.73	4.84	4.81	4.77	4.71	4.70	4.46				
145	5.09	4.91	4.92	5.00	5.02	5.21	5.23	5.26	4.89	4.94	5.04	5.01	4.99	4.92	4.91	4.82				
150	5.28	5.10	5.10	5.19	5.33	5.41	5.42	5.44	5.11	5.15	5.25	5.22	5.20	5.16	5.13	5.05				
155	5.46	5.29	5.29	5.50	5.52	5.61	5.62	5.64	5.33	5.37	5.45	5.43	5.42	5.37	5.38	5.29				
160	5.64	5.48	5.63	5.69	5.72	5.80	5.79	5.81	5.54	5.56	5.64	5.64	5.63	5.59	5.58	5.52				
165	5.81	5.64	5.81	5.87	5.89	5.96	5.94	5.96	5.70	5.75	5.82	5.82	5.84	5.79	5.78	5.72				
170	5.79	5.85	5.95	6.02	6.04	6.09	6.06	6.07	5.73	5.91	5.98	5.98	6.01	5.96	5.96	5.90				
175	5.87	6.06	6.06	6.13	6.14	6.18	6.15	6.15	5.86	6.03	6.09	6.10	6.14	6.10	6.09	6.04				
180	5.94	6.10	6.14	6.18	6.20	6.20	6.18	6.16	5.94	6.10	6.14	6.17	6.20	6.20	6.18	6.15				

C Range: 0 - 360DEG  
C Interval: 22.5DEG  
Test Speed: HIGH  
Temperature:25.3℃  
Operators:Cloud  
Test Date:2024-10-25

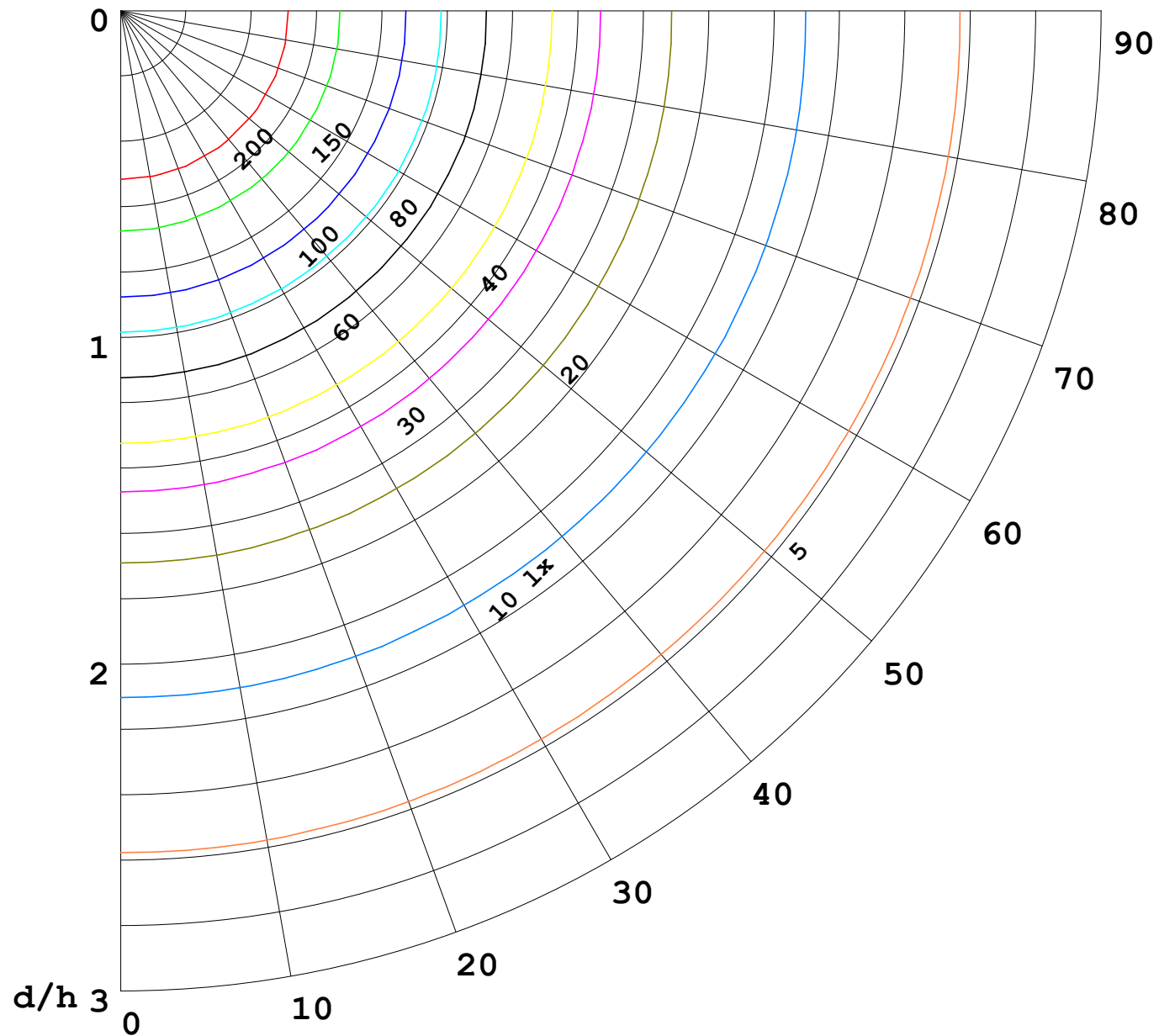
γ Range: 0 - 180DEG  
γ Interval: 1.0DEG  
Test System:EVERFINE GO-2000B\_V1 SYSTEM V2.00.488  
Humidity:65.0%  
Test Distance:6.360m [K=1.0000]  
Remarks:

I (cd)



1000 lm

$\kappa = 1$



F = 1000 lm  
 K = 0.7  
 Hcc = 0.8 m  
 Hfc = 0.0 m  
 Eave = 100 lx

	Pcc	Pw	Pfc
—————	70	50	30
—————	50	30	20

