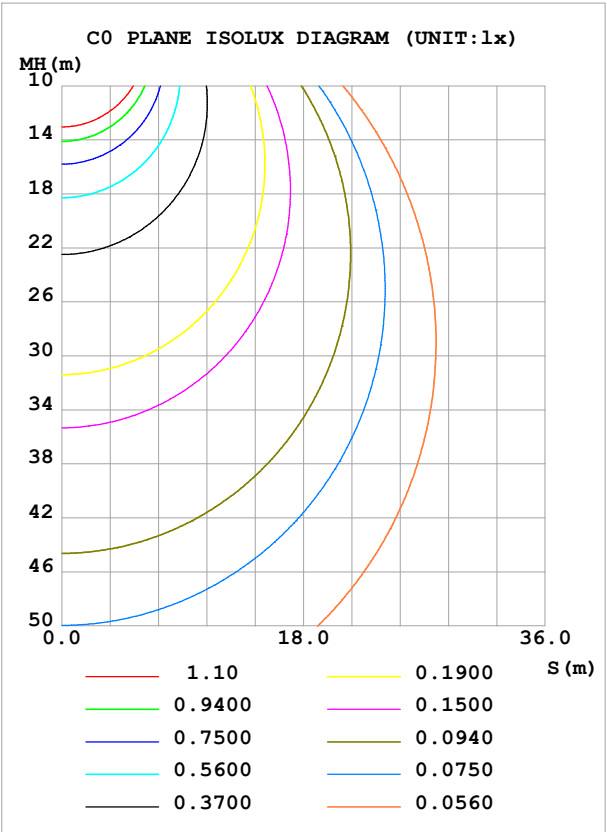
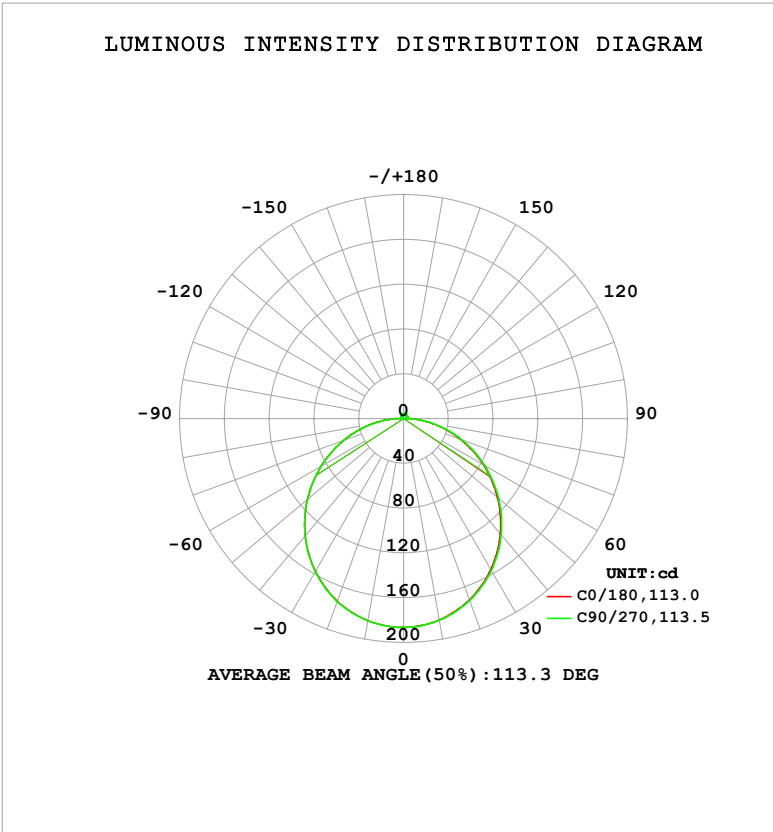


LUMINAIRE PHOTOMETRIC TEST REPORT

Test:U:24.00V I:0.4323A P:10.38W PF:1.000 Freq:0Hz Lamp Flux:569.418x1 lm		
NAME: SF10-24V-2835-144-6500-80	TYPE:	WEIGHT:
SPEC.:	DIM.: Length=1m	SERIAL No.:
MFR.:	SUR.:	Shielding Angle:

DATA OF LAMP		PHOTOMETRIC DATA				Eff: 54.88 lm/W
MODEL		Imax (cd)	186.6	S/MH(C0/180)	1.26	
NOMINAL POWER(W)		LOR(%)	100.0	S/MH(C90/270)	1.26	
RATED VOLTAGE(V)		TOTAL FLUX(lm)	569.42	η UP,DN(C0-180)	1.8,48.0	
NOMINAL FLUX(lm)	569.418	CIE CLASS	DIRECT	η UP,DN(C180-360)	1.7,48.5	
LAMPS INSIDE	1	η up (%)	3.5	CIBSE SHR NOM	1.25	
TEST VOLTAGE(V)		η down (%)	96.5	CIBSE SHR MAX	1.35	



C Range: 0 - 360DEG	γ Range: 0 - 180DEG
C Interval: 22.5DEG	γ Interval: 1.0DEG
Test Speed: HIGH	Test System:EVERFINE GO-2000B_V1 SYSTEM V2.00.488
Temperature:25.3℃	Humidity:65.0%
Operators:Cloud	Test Distance:6.360m [K=1.0000]
Test Date:2024-11-05	Remarks:

## ZONAL FLUX DIAGRAM

## ZONAL FLUX DIAGRAM:

$\gamma$	C0	C45	C90	C135	C180	C225	C270	C315	$\gamma$	$\Phi$ zone	$\Phi$ total	%lum, lamp
10	182.7	182.9	183.0	183.1	183.3	183.4	183.4	183.2	0- 10	17.64	17.64	3.1,3.1
20	172.2	172.6	172.9	173.1	173.7	174.0	174.1	173.3	10- 20	50.49	68.13	12,12
30	155.8	156.3	156.8	157.1	157.6	158.0	157.9	157.1	20- 30	76.40	144.5	25.4,25.4
40	134.5	135.0	135.7	136.0	136.7	137.2	136.9	136.0	30- 40	92.02	236.5	41.5,41.5
50	109.6	110.1	110.9	111.3	112.1	112.6	112.2	111.1	40- 50	95.66	332.2	58.3,58.3
60	82.21	82.71	83.58	84.17	85.14	85.49	85.00	83.85	50- 60	87.46	419.7	73.7,73.7
70	54.08	54.51	55.28	56.07	57.18	57.32	56.71	55.59	60- 70	69.26	488.9	85.9,85.9
80	26.41	26.78	27.49	28.41	29.53	29.42	28.66	27.67	70- 80	44.19	533.1	93.6,93.6
90	5.115	4.142	2.229	4.853	6.475	5.286	2.368	4.432	80- 90	16.42	549.5	96.5,96.5
100	2.412	2.443	2.522	2.449	2.166	2.406	2.372	2.417	90-100	2.830	552.4	97,97
110	2.772	2.789	2.866	2.807	2.471	2.680	2.607	2.678	100-110	2.700	555.1	97.5,97.5
120	3.117	3.075	3.158	3.157	2.798	2.966	2.942	2.790	110-120	2.837	557.9	98,98
130	3.442	3.369	3.438	3.484	3.141	3.266	3.260	3.262	120-130	2.842	560.8	98.5,98.5
140	3.732	3.655	3.715	3.784	3.477	3.589	3.595	3.571	130-140	2.699	563.5	99,99
150	4.006	3.929	4.059	4.091	3.825	3.932	3.936	3.895	140-150	2.381	565.8	99.4,99.4
160	4.290	4.292	4.357	4.377	4.170	4.256	4.271	4.222	150-160	1.901	567.7	99.7,99.7
170	4.431	4.526	4.591	4.582	4.389	4.530	4.565	4.508	160-170	1.246	569.0	99.9,99.9
180	4.546	4.659	4.704	4.675	4.546	4.662	4.707	4.690	170-180	0.4378	569.4	100,100
DEG	LUMINOUS INTENSITY:cd									UNIT:lm		

Conical surface Flux(90deg): 284.69 lm

%lum = 50.0%

%lamp = 50.0%

Conical surface Flux(130deg): 457.09 lm

%lum = 80.3%

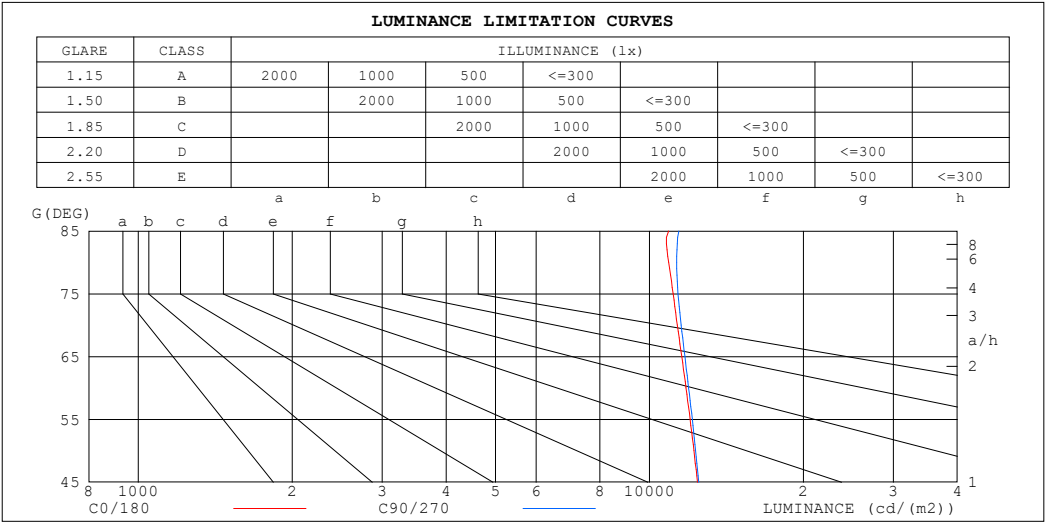
%lamp = 80.3%

C Range: 0 - 360DEG  
C Interval: 22.5DEG  
Test Speed: HIGH  
Temperature:25.3℃  
Operators:Cloud  
Test Date:2024-11-05

$\gamma$  Range: 0 - 180DEG  
 $\gamma$  Interval: 1.0DEG  
 $\gamma$  Test System:EVERFINE GO-2000B\_V1 SYSTEM V2.00.488  
Humidity:65.0%  
Test Distance:6.360m [K=1.0000]  
Remarks:

LUMINANCE LIMITATION CURVES

Test:U:24.00V I:0.4323A P:10.38W PF:1.000 Freq:0Hz Lamp Flux:569.418x1 lm		
NAME: SF10-24V-2835-144-6500-80	TYPE:	WEIGHT:
SPEC.:	DIM.: Length=1m	SERIAL No.:
MFR.:	SUR.:	Shielding Angle:



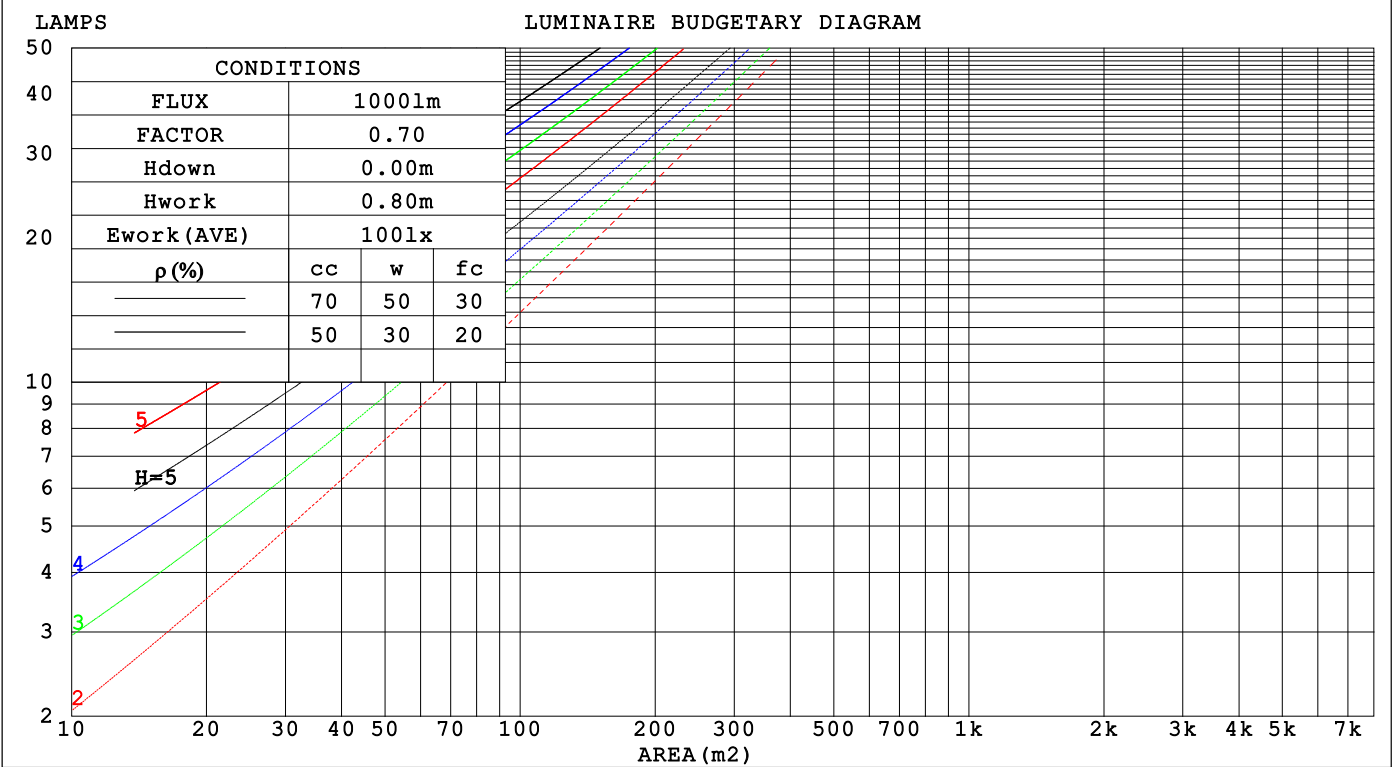
LUMINANCE cd/(m2)		
G (DEG)	C0/180	C90/270
85	10903	11409
80	10905	11298
75	11117	11373
70	11336	11533
65	11563	11727
60	11788	11926
55	12008	12122
50	12218	12313
45	12410	12483

C Range: 0 - 360DEG	γ Range: 0 - 180DEG
C Interval: 22.5DEG	γ Interval: 1.0DEG
Test Speed: HIGH	Test System:EVERFINE GO-2000B_V1 SYSTEM V2.00.488
Temperature:25.3℃	Humidity:65.0%
Operators:Cloud	Test Distance:6.360m [K=1.0000]
Test Date:2024-11-05	Remarks:

CU AND LUMINAIRE BUDGETARY ESTIMATE DIAGRAM

Test:U:24.00V I:0.4323A P:10.38W PF:1.000 Freq:0Hz		
Lamp Flux:569.418x1 lm		
NAME: SF10-24V-2835-144-6500-80	TYPE:	WEIGHT:
SPEC.:	DIM.: Length=1m	SERIAL No.:
MFR.:	SUR.:	Shielding Angle:

pcc	80%			70%			50%			30%			10%			0
ρw	50%	30%	10%	50%	30%	10%	50%	30%	10%	50%	30%	10%	50%	30%	10%	0
ρfc	20%			20%			20%			20%			20%			0
RCR	RCR:Room Cavity Ratio			Coefficients of Utilization(CU)												
0.0	1.18	1.18	1.18	1.15	1.15	1.15	1.09	1.09	1.09	1.04	1.04	1.04	.99	.99	.99	.97
1.0	1.02	.98	.94	.90	.96	.92	.95	.91	.88	.90	.87	.85	.86	.84	.82	.79
2.0	.89	.82	.76	.87	.80	.75	.82	.77	.72	.79	.74	.70	.75	.71	.68	.66
3.0	.78	.69	.63	.76	.68	.62	.72	.66	.60	.69	.63	.59	.66	.61	.57	.55
4.0	.69	.60	.53	.67	.59	.52	.64	.57	.51	.61	.55	.50	.59	.53	.49	.47
5.0	.61	.52	.45	.60	.51	.45	.57	.50	.44	.55	.48	.43	.53	.47	.43	.40
6.0	.55	.46	.39	.54	.45	.39	.52	.44	.39	.50	.43	.38	.48	.42	.37	.35
7.0	.50	.41	.35	.49	.41	.35	.47	.40	.34	.45	.39	.34	.44	.38	.33	.31
8.0	.45	.37	.31	.45	.36	.31	.43	.36	.30	.41	.35	.30	.40	.34	.30	.28
9.0	.42	.33	.28	.41	.33	.28	.40	.32	.27	.38	.32	.27	.37	.31	.27	.25
10.0	.38	.31	.25	.38	.30	.25	.37	.30	.25	.35	.29	.25	.34	.28	.24	.22

C Range: 0 - 360DEG  
C Interval: 22.5DEG  
Test Speed: HIGH  
Temperature:25.3℃  
Operators:Cloud  
Test Date:2024-11-05γ Range: 0 - 180DEG  
γ Interval: 1.0DEG  
Test System:EVERFINE GO-2000B\_V1 SYSTEM V2.00.488  
Humidity:65.0%  
Test Distance:6.360m [K=1.0000]  
Remarks:

## WEC AND CCEC

Test:U:24.00V I:0.4323A P:10.38W PF:1.000 Freq:0Hz Lamp Flux:569.418x1 lm					
NAME: SF10-24V-2835-144-6500-80			TYPE:		WEIGHT:
SPEC.:			DIM.: Length=1m		SERIAL No.:
MFR.:			SUR.:		Shielding Angle:

pcc	80%			70%			50%			30%			10%			0														
pw	50%	30%	10%	50%	30%	10%	50%	30%	10%	50%	30%	10%	50%	30%	10%	0														
pfc	20%			20%			20%			20%			20%			0														
RCR	RCR:Room Cavity Ratio															Wall Exitance Coefficients(WEC)														
0.0																														
1.0	.325	.185	.059	.317	.181	.057	.301	.173	.055	.287	.166	.053	.274	.159	.051															
2.0	.300	.165	.050	.293	.161	.050	.279	.155	.048	.267	.150	.047	.255	.144	.046															
3.0	.275	.147	.044	.269	.144	.043	.257	.139	.042	.246	.135	.041	.235	.130	.040															
4.0	.253	.131	.039	.247	.129	.038	.236	.125	.037	.226	.121	.037	.217	.118	.036															
5.0	.233	.119	.034	.228	.117	.034	.218	.114	.033	.209	.110	.033	.201	.107	.032															
6.0	.215	.108	.031	.211	.106	.031	.202	.104	.030	.194	.101	.030	.186	.098	.029															
7.0	.200	.099	.028	.196	.098	.028	.188	.095	.027	.181	.093	.027	.174	.090	.027															
8.0	.187	.091	.026	.183	.090	.025	.176	.088	.025	.169	.086	.025	.163	.084	.024															
9.0	.175	.084	.024	.171	.083	.023	.165	.082	.023	.159	.080	.023	.153	.078	.022															
10.0	.164	.079	.022	.161	.078	.022	.155	.076	.021	.150	.074	.021	.144	.073	.021															

pcc	80%			70%			50%			30%			10%			0
pw	50%	30%	10%	50%	30%	10%	50%	30%	10%	50%	30%	10%	50%	30%	10%	0
pfc	20%			20%			20%			20%			20%			0
RCR	RCR:Room Cavity Ratio						Ceiling Cavity Exitance Coefficients (CCEC)									
0.0	.217	.217	.217	.186	.186	.186	.127	.127	.127	.073	.073	.073	.023	.023	.023	
1.0	.208	.183	.160	.178	.157	.138	.122	.108	.095	.070	.062	.055	.022	.020	.018	
2.0	.200	.159	.124	.172	.137	.107	.118	.095	.075	.068	.055	.044	.022	.018	.014	
3.0	.193	.141	.101	.165	.122	.087	.113	.085	.061	.065	.050	.036	.021	.016	.012	
4.0	.185	.128	.085	.159	.111	.074	.109	.077	.052	.063	.045	.031	.020	.015	.010	
5.0	.177	.118	.074	.152	.102	.065	.105	.071	.046	.061	.042	.027	.020	.014	.009	
6.0	.170	.110	.066	.146	.095	.058	.101	.067	.041	.059	.039	.024	.019	.013	.008	
7.0	.163	.103	.061	.141	.089	.053	.097	.063	.037	.056	.037	.022	.018	.012	.007	
8.0	.157	.097	.056	.135	.084	.049	.093	.059	.035	.054	.035	.021	.018	.011	.007	
9.0	.151	.092	.053	.130	.080	.046	.090	.056	.033	.052	.033	.019	.017	.011	.006	
10.0	.145	.088	.050	.125	.076	.044	.087	.054	.031	.051	.032	.019	.016	.010	.006	

C Range: 0 - 360DEG  
C Interval: 22.5DEG  
Test Speed: HIGH  
Temperature:25.3℃  
Operators:Cloud  
Test Date:2024-11-05

γ Range: 0 - 180DEG  
γ Interval: 1.0DEG  
Test System:EVERFINE GO-2000B\_V1 SYSTEM V2.00.488  
Humidity:65.0%  
Test Distance:6.360m [K=1.0000]  
Remarks:

UGR(Unified Glare Rating) Table

Test:U:24.00V I:0.4323A P:10.38W PF:1.000 Freq:0Hz Lamp Flux:569.418x1 lm										
NAME: SF10-24V-2835-144-6500-80					TYPE:			WEIGHT:		
SPEC.:					DIM.: Length=1m			SERIAL No.:		
MFR.:					SUR.:			Shielding Angle:		
ceiling/cavity	0.7	0.7	0.5	0.5	0.3	0.7	0.7	0.5	0.5	0.3
walls	0.5	0.3	0.5	0.3	0.3	0.5	0.3	0.5	0.3	0.3
working plane	0.2	0.2	0.2	0.2	0.2	0.2	0.2	0.2	0.2	0.2
Room dimensions	Viewed crosswise					Viewed endwise				
x = 2H y = 2H	23.2	24.7	23.5	25.0	25.2	23.2	24.7	23.6	25.0	25.3
3H	24.8	26.2	25.2	26.5	26.8	24.9	26.3	25.3	26.6	26.9
4H	25.6	26.9	25.9	27.2	27.5	25.6	26.9	26.0	27.3	27.6
6H	26.1	27.4	26.5	27.7	28.1	26.2	27.5	26.6	27.8	28.2
8H	26.3	27.5	26.7	27.9	28.3	26.5	27.7	26.9	28.0	28.4
12H	26.5	27.7	26.9	28.0	28.4	26.6	27.8	27.0	28.1	28.5
4H 2H	23.8	25.1	24.2	25.5	25.8	23.9	25.2	24.2	25.5	25.8
3H	25.7	26.8	26.1	27.2	27.6	25.7	26.9	26.1	27.2	27.6
4H	26.5	27.6	26.9	28.0	28.4	26.6	27.6	27.0	28.0	28.4
6H	27.2	28.2	27.7	28.6	29.0	27.3	28.3	27.8	28.7	29.1
8H	27.5	28.4	28.0	28.8	29.3	27.6	28.5	28.1	28.9	29.4
12H	27.7	28.5	28.2	29.0	29.5	27.9	28.7	28.3	29.1	29.6
8H 4H	26.8	27.7	27.3	28.1	28.6	26.9	27.8	27.4	28.2	28.7
6H	27.7	28.5	28.2	28.9	29.4	27.8	28.6	28.3	29.0	29.5
8H	28.1	28.8	28.6	29.3	29.8	28.2	28.9	28.7	29.4	29.9
12H	28.5	29.0	29.0	29.5	30.1	28.6	29.1	29.1	29.6	30.2
12H 4H	26.9	27.7	27.4	28.1	28.6	26.9	27.7	27.4	28.2	28.7
6H	27.8	28.5	28.3	29.0	29.5	27.9	28.6	28.4	29.0	29.6
8H	28.3	28.8	28.8	29.3	29.9	28.4	28.9	28.9	29.4	30.0
Variations with the observer position at spacings(CIE Pub.117):										
S = 1.0H	+ 0.1 / - 0.2					+ 0.1 / - 0.2				
1.5H	+ 0.2 / - 0.3					+ 0.2 / - 0.3				
2.0H	+ 0.1 / - 0.3					+ 0.1 / - 0.3				

CIE Pub.117, 569.4 lm Total Lamp Luminous Flux Correct (8log(F/F0) = -2.0)  
Area: 0.014 m2

C Range: 0 - 360DEG  
C Interval: 22.5DEG  
Test Speed: HIGH  
Temperature:25.3℃  
Operators:Cloud  
Test Date:2024-11-05

γ Range: 0 - 180DEG  
γ Interval: 1.0DEG  
Test System:EVERFINE GO-2000B\_V1 SYSTEM V2.00.488  
Humidity:65.0%  
Test Distance:6.360m [K=1.0000]  
Remarks:

## UTILIZATION FACTORS TABLE

Test:U:24.00V I:0.4323A P:10.38W PF:1.000 Freq:0Hz Lamp Flux:569.418x1 lm		
NAME: SF10-24V-2835-144-6500-80	TYPE:	WEIGHT:
SPEC.:	DIM.: Length=1m	SERIAL No.:
MFR.:	SUR.:	Shielding Angle:

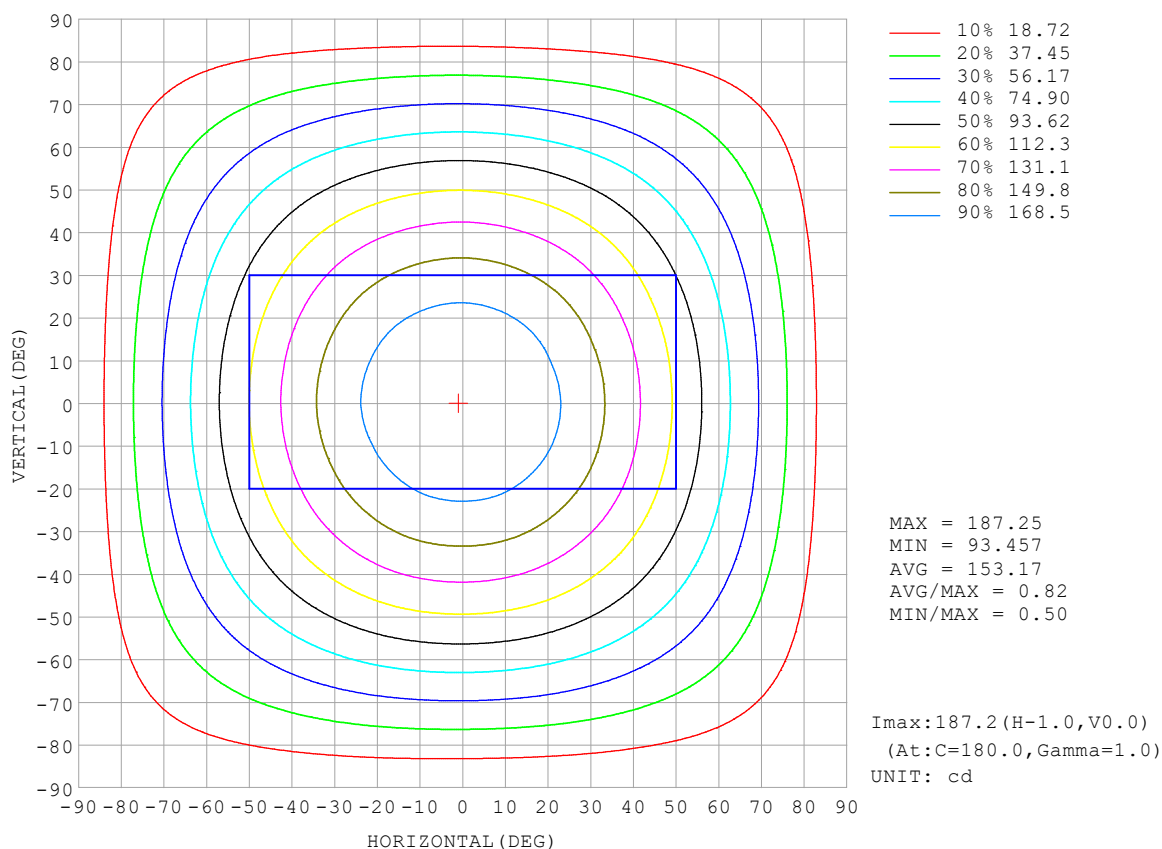
REFLECTANCE										
Ceiling	0.8	0.8	0.8	0.7	0.7	0.7	0.5	0.5	0.5	0
Walls	0.7	0.5	0.3	0.7	0.5	0.3	0.7	0.5	0.3	0
Working plane	0.2	0.2	0.2	0.2	0.2	0.2	0.2	0.2	0.2	0
ROOM INDEX	UTILIZATION FACTORS (PERCENT) $k(RI) \times RCR = 5$									
$k = 0.60$	56	44	37	55	44	37	54	43	37	30
0.80	66	54	46	64	53	46	62	52	45	38
1.00	74	62	55	72	62	55	70	63	54	46
1.25	81	70	63	79	69	62	76	67	61	53
1.50	86	76	68	84	75	68	81	72	66	58
2.00	93	84	77	91	82	76	87	80	74	66
2.50	97	89	82	95	87	81	90	84	79	70
3.00	100	93	87	98	91	86	93	88	83	74
4.00	104	98	93	102	96	92	97	92	89	79
5.00	107	102	97	104	100	96	99	95	92	82
ROOM INDEX	UF (total)									Direct
According to DIN EN 13032-2 2004			Suspended					SHRNOM = 1.25		

C Range: 0 - 360DEG  
 C Interval: 22.5DEG  
 Test Speed: HIGH  
 Temperature: 25.3°C  
 Operators: Cloud  
 Test Date: 2024-11-05

γ Range: 0 - 180DEG  
 γ Interval: 1.0DEG  
 Test System: EVERFINE GO-2000B\_V1 SYSTEM V2.00.488  
 Humidity: 65.0%  
 Test Distance: 6.360m [K=1.0000]  
 Remarks:

## ISOCANDELA DIAGRAM

Test:U:24.00V I:0.4323A P:10.38W PF:1.000 Freq:0Hz Lamp Flux:569.418x1 lm		
NAME: SF10-24V-2835-144-6500-80	TYPE:	WEIGHT:
SPEC.:	DIM.: Length=1m	SERIAL No.:
MFR.:	SUR.:	Shielding Angle:



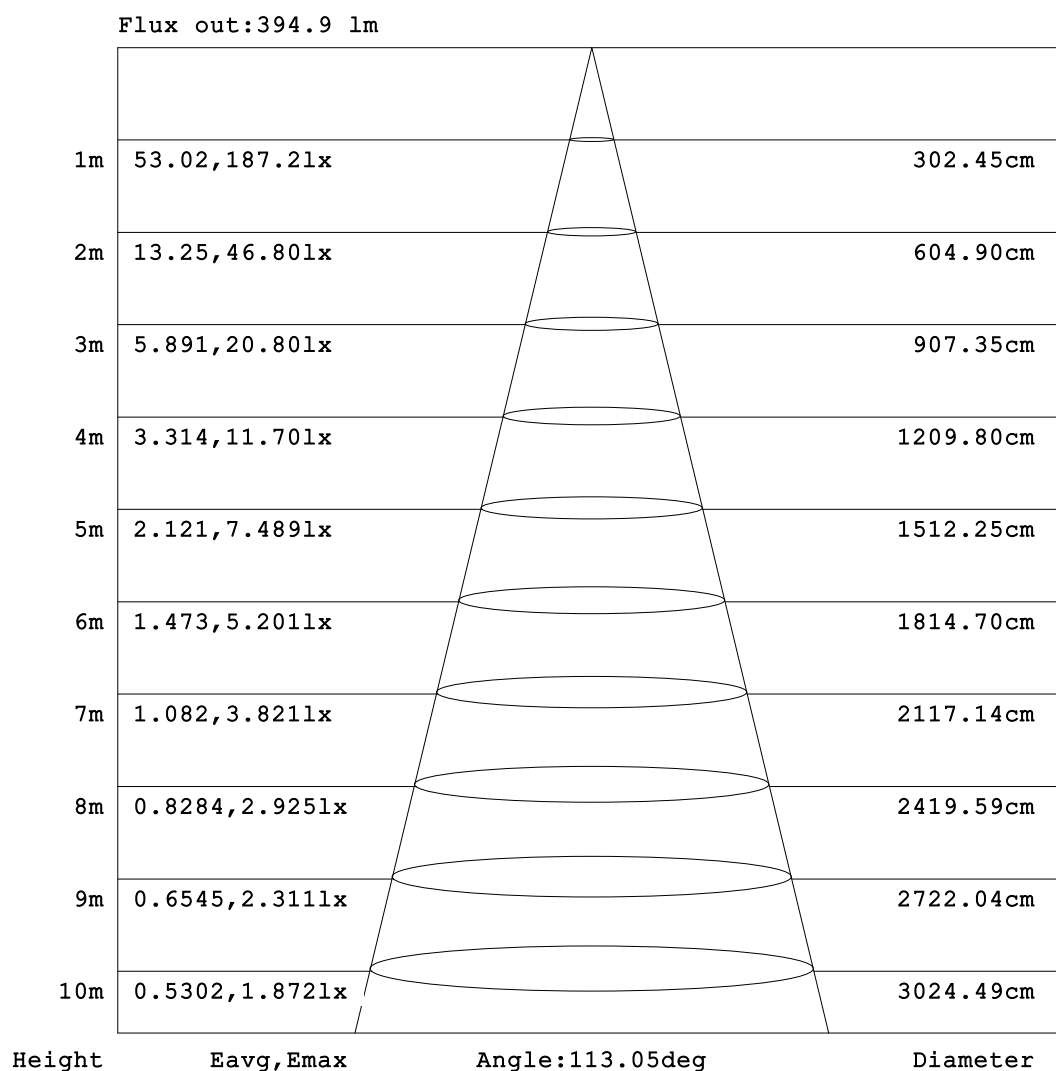
C Range: 0 - 360DEG  
C Interval: 22.5DEG  
Test Speed: HIGH  
Temperature:25.3℃  
Operators:Cloud  
Test Date:2024-11-05

γ Range: 0 - 180DEG  
γ Interval: 1.0DEG  
Test System:EVERFINE GO-2000B\_V1 SYSTEM V2.00.488  
Humidity:65.0%  
Test Distance:6.360m [K=1.0000]  
Remarks:



## AAI Figure

Test:U:24.00V I:0.4323A P:10.38W PF:1.000 Freq:0Hz Lamp Flux:569.418x1 lm		
NAME: SF10-24V-2835-144-6500-80	TYPE:	WEIGHT:
SPEC.:	DIM.: Length=1m	SERIAL No.:
MFR.:	SUR.:	Shielding Angle:



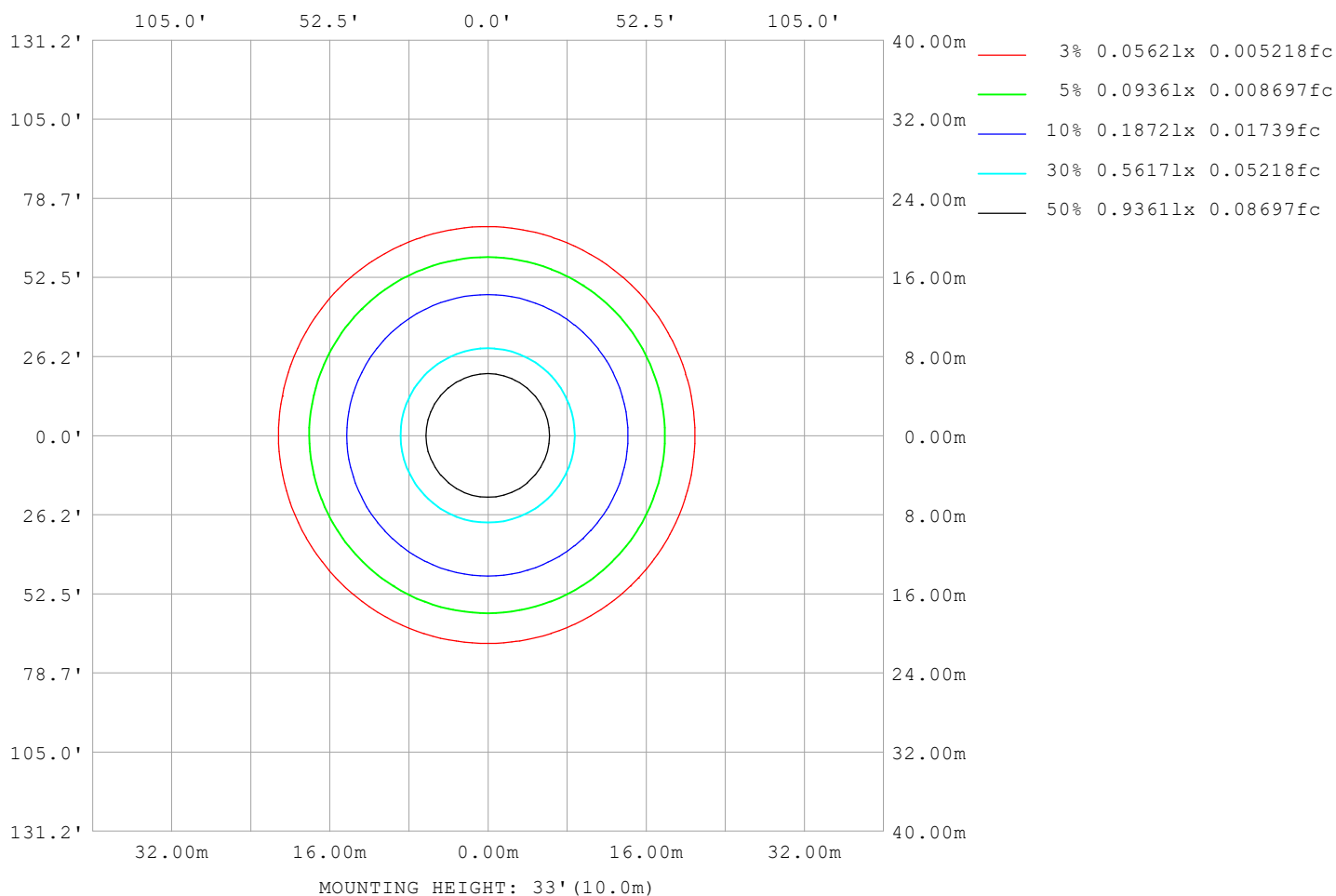
Note:The Curves indicate the illuminated area and the average illumination when the luminaire is at different distance.

C Range: 0 - 360DEG  
C Interval: 22.5DEG  
Test Speed: HIGH  
Temperature:25.3℃  
Operators:Cloud  
Test Date:2024-11-05

γ Range: 0 - 180DEG  
γ Interval: 1.0DEG  
Test System:EVERFINE GO-2000B\_V1 SYSTEM V2.00.488  
Humidity:65.0%  
Test Distance:6.360m [K=1.0000]  
Remarks:

## ISOLUX DIAGRAM

Test:U:24.00V I:0.4323A P:10.38W PF:1.000 Freq:0Hz Lamp Flux:569.418x1 lm		
NAME: SF10-24V-2835-144-6500-80	TYPE:	WEIGHT:
SPEC.:	DIM.: Length=1m	SERIAL No.:
MFR.:	SUR.:	Shielding Angle:



C Range: 0 - 360DEG  
C Interval: 22.5DEG  
Test Speed: HIGH  
Temperature: 25.3°C  
Operators: Cloud  
Test Date: 2024-11-05

γ Range: 0 - 180DEG  
γ Interval: 1.0DEG  
Test System: EVERFINE GO-2000B\_V1 SYSTEM V2.00.488  
Humidity: 65.0%  
Test Distance: 6.360m [K=1.0000]  
Remarks:

## LED Avg.L Report

Test:U:24.00V I:0.4323A P:10.38W PF:1.000 Freq:0Hz Lamp Flux:569.418x1 lm		
NAME: SF10-24V-2835-144-6500-80	TYPE:	WEIGHT:
SPEC.:	DIM.: Length=1m	SERIAL No.:
MFR.:	SUR.:	Shielding Angle:

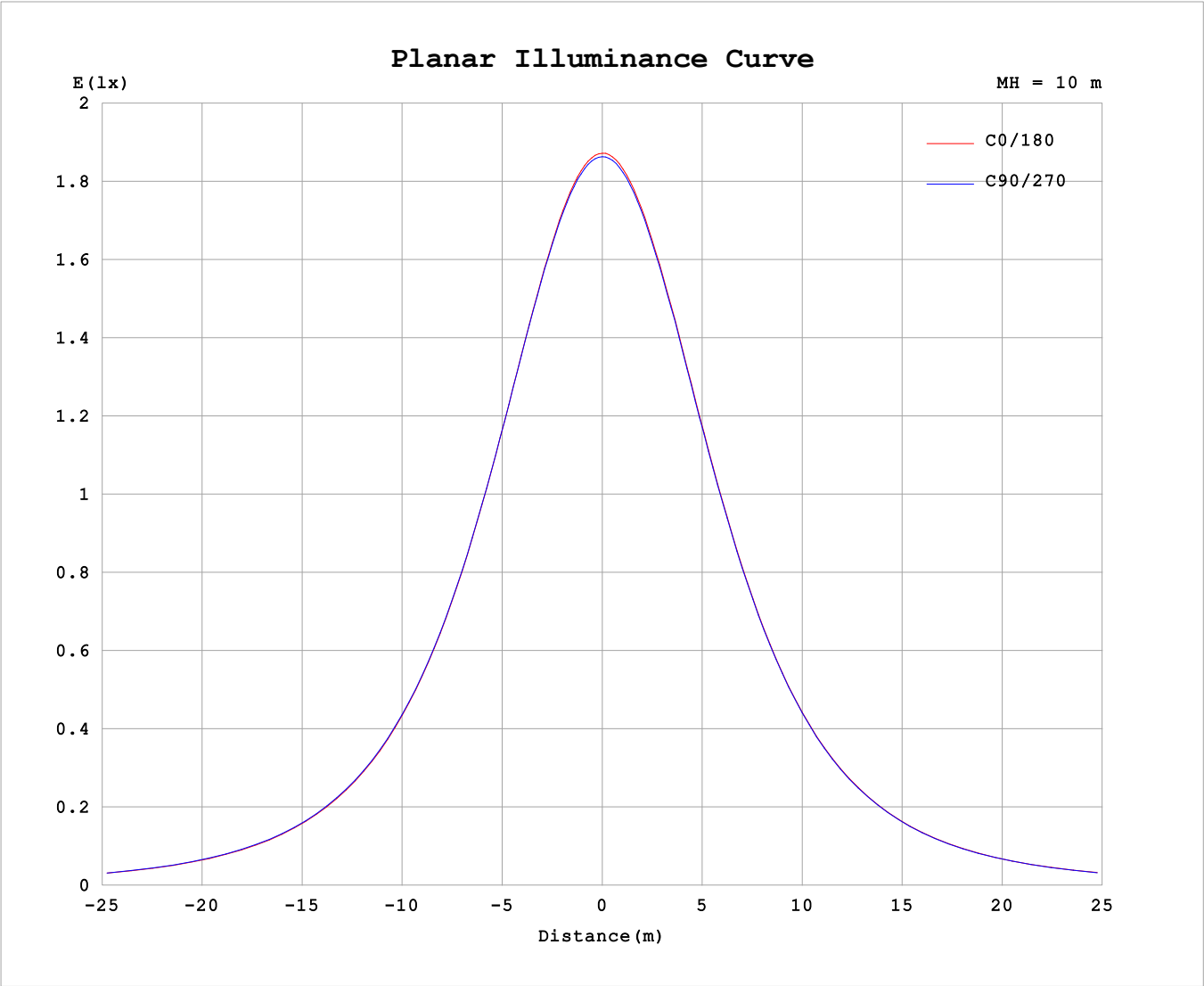
AvgL	cd/m2
L_0~180 (65) av	11778
L_0~180 (75) av	11506
L_0~180 (85) av	12039
L_90~270 (65) av	11862
L_90~270 (75) av	11568
L_90~270 (85) av	11822
L_45 (65) av	11833
L_45 (75) av	11553
L_45 (85) av	11904

Standard: GB/T 29293-2012

C Range: 0 - 360DEG  
C Interval: 22.5DEG  
Test Speed: HIGH  
Temperature:25.3℃  
Operators:Cloud  
Test Date:2024-11-05

γ Range: 0 - 180DEG  
γ Interval: 1.0DEG  
Test System:EVERFINE GO-2000B\_V1 SYSTEM V2.00.488  
Humidity:65.0%  
Test Distance:6.360m [K=1.0000]  
Remarks:

Planar Illuminance Curve



C Range: 0 - 360DEG  
C Interval: 22.5DEG  
Test Speed: HIGH  
Temperature:25.3℃  
Operators:Cloud  
Test Date:2024-11-05

γ Range: 0 - 180DEG  
γ Interval: 1.0DEG  
Test System:EVERFINE GO-2000B\_V1 SYSTEM V2.00.488  
Humidity:65.0%  
Test Distance:6.360m [K=1.0000]  
Remarks:

## LUMINOUS DISTRIBUTION INTENSITY DATA

Test:U:24.00V I:0.4323A P:10.38W PF:1.000 Freq:0Hz Lamp Flux:569.418x1 lm																	
NAME: SF10-24V-2835-144-6500-80									TYPE:						WEIGHT:		
SPEC.:									DIM.: Length=1m						SERIAL No.:		
MFR.:									SUR.:						Shielding Angle:		

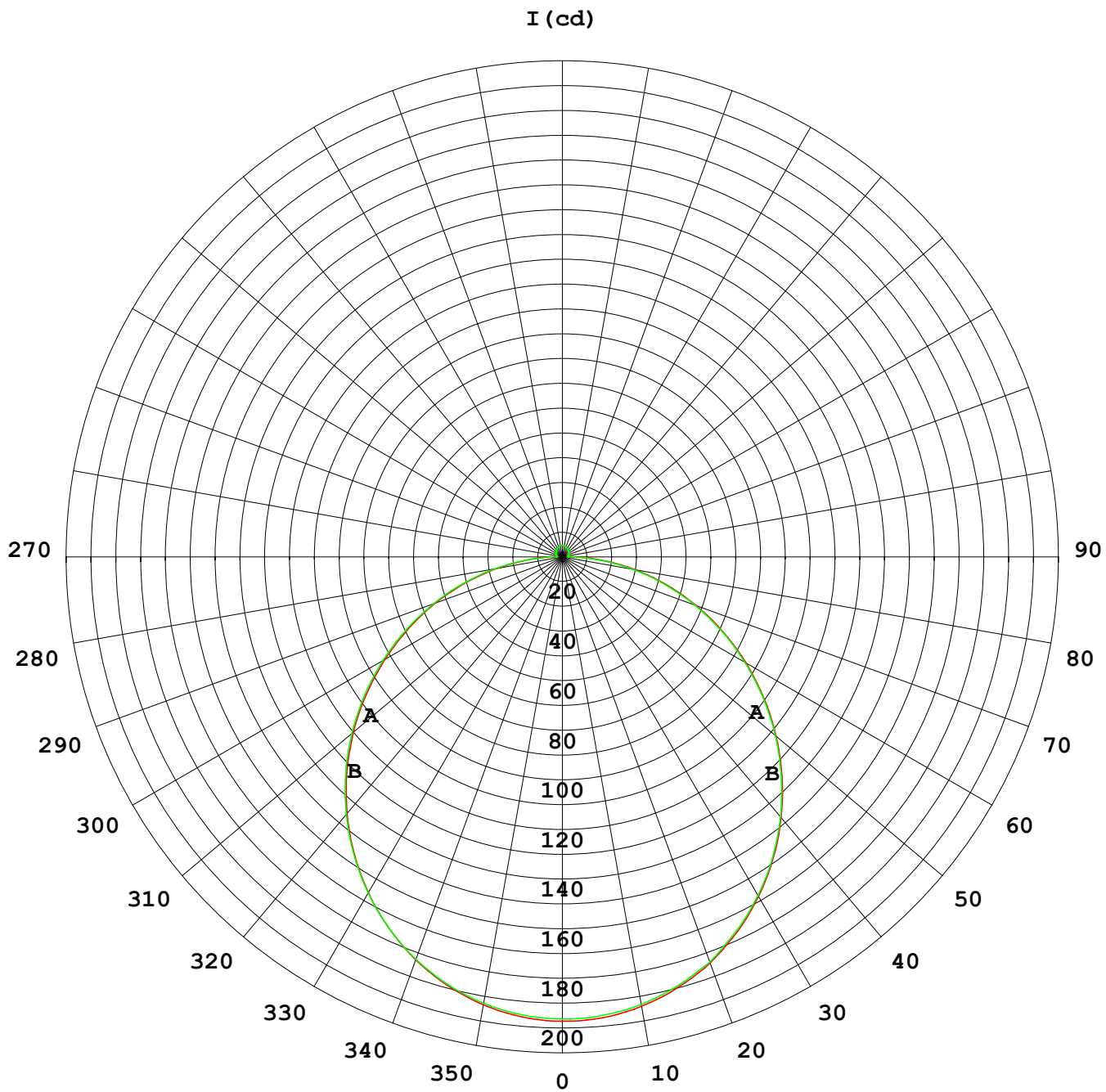
Table--1

UNIT: cd

C (DEG) γ (DEG)		0	22.5	45	67.5	90	112.5	135	157.5	180	202.5	225	247.5	270	292.5	315	337.5			
0	187	187	187	187	187	187	187	187	187	187	187	187	187	187	187	187	187			
5	186	186	186	186	186	186	186	186	186	186	186	186	186	186	186	186	186			
10	183	183	183	183	183	183	183	183	183	183	183	183	183	183	183	183	183			
15	178	178	179	179	179	179	179	179	179	179	179	179	179	179	179	179	179			
20	172	173	173	173	173	173	173	173	173	174	173	174	174	174	173	173	173			
25	165	165	165	165	165	166	166	166	166	166	166	167	166	166	166	166	165			
30	156	156	156	157	157	157	157	157	157	158	158	158	158	158	157	157	156			
35	146	146	146	147	147	147	147	147	147	148	148	148	148	148	147	147	146			
40	135	135	135	136	136	136	136	136	136	137	137	137	137	137	136	136	135			
45	122	123	123	123	124	124	124	124	124	125	125	125	125	125	124	124	123			
50	110	110	110	111	111	111	111	111	112	112	112	113	112	112	112	111	110			
55	96.1	96.3	96.6	97.2	97.4	97.9	97.9	98.3	98.8	98.9	99.3	99.0	98.8	98.2	97.7	96.8				
60	82.2	82.5	82.7	83.3	83.6	84.1	84.2	84.6	85.1	85.2	85.5	85.2	85.0	84.4	83.8	83.0				
65	68.2	68.4	68.6	69.2	69.5	70.0	70.2	70.6	71.2	71.2	71.5	71.1	70.9	70.2	69.8	68.9				
70	54.1	54.3	54.5	55.1	55.3	55.8	56.1	56.6	57.2	57.2	57.3	56.9	56.7	56.1	55.6	54.8				
75	40.1	40.4	40.5	41.1	41.3	41.9	42.1	42.7	43.2	43.2	43.3	42.8	42.6	42.0	41.5	40.8				
80	26.4	26.7	26.8	27.3	27.5	28.1	28.4	29.0	29.5	29.5	29.4	28.9	28.7	28.1	27.7	27.0				
85	13.3	13.3	13.3	13.7	13.9	14.6	14.9	15.6	16.1	15.9	15.8	15.2	14.9	14.3	14.1	13.6				
90	5.12	4.92	4.14	3.10	2.23	3.37	4.85	6.06	6.48	6.18	5.29	3.73	2.37	3.30	4.43	5.01				
95	2.25	2.27	2.28	2.32	2.35	2.34	2.28	2.28	2.04	2.15	2.29	2.32	2.33	2.34	2.29	2.13				
100	2.41	2.44	2.44	2.49	2.52	2.51	2.45	2.44	2.17	2.25	2.41	2.43	2.37	2.42	2.42	2.27				
105	2.59	2.61	2.61	2.67	2.70	2.70	2.63	2.62	2.32	2.40	2.54	2.56	2.45	2.52	2.55	2.42				
110	2.77	2.79	2.79	2.84	2.87	2.88	2.81	2.79	2.47	2.54	2.68	2.68	2.61	2.53	2.68	2.56				
115	2.94	2.96	2.96	2.99	3.01	3.05	2.99	2.97	2.63	2.69	2.82	2.82	2.78	2.63	2.79	2.73				
120	3.12	3.13	3.08	3.14	3.16	3.21	3.16	3.14	2.80	2.85	2.97	2.96	2.94	2.92	2.79	2.86				
125	3.28	3.29	3.22	3.29	3.30	3.37	3.32	3.32	2.97	3.01	3.11	3.11	3.10	3.08	3.01	2.96				
130	3.44	3.45	3.37	3.43	3.44	3.52	3.48	3.48	3.14	3.17	3.27	3.26	3.26	3.24	3.26	3.15				
135	3.59	3.61	3.52	3.57	3.58	3.67	3.64	3.63	3.31	3.34	3.42	3.42	3.42	3.39	3.41	3.35				
140	3.73	3.66	3.65	3.71	3.72	3.81	3.78	3.79	3.48	3.51	3.59	3.58	3.59	3.56	3.57	3.52				
145	3.86	3.80	3.79	3.85	3.86	3.96	3.93	3.94	3.65	3.67	3.76	3.74	3.77	3.72	3.73	3.68				
150	4.01	3.93	3.93	3.99	4.06	4.12	4.09	4.09	3.83	3.84	3.93	3.92	3.94	3.89	3.89	3.84				
155	4.15	4.07	4.07	4.20	4.22	4.27	4.24	4.24	4.00	4.02	4.10	4.10	4.11	4.06	4.06	4.00				
160	4.29	4.21	4.29	4.35	4.36	4.41	4.38	4.38	4.17	4.18	4.26	4.26	4.27	4.22	4.22	4.17				
165	4.38	4.35	4.42	4.48	4.48	4.52	4.49	4.49	4.33	4.34	4.41	4.41	4.43	4.38	4.37	4.33				
170	4.43	4.48	4.53	4.59	4.59	4.63	4.58	4.59	4.39	4.47	4.53	4.54	4.57	4.52	4.51	4.47				
175	4.50	4.61	4.61	4.67	4.67	4.69	4.65	4.65	4.49	4.57	4.63	4.63	4.66	4.63	4.62	4.57				
180	4.55	4.64	4.66	4.69	4.70	4.71	4.68	4.67	4.55	4.63	4.66	4.69	4.71	4.70	4.69	4.65				

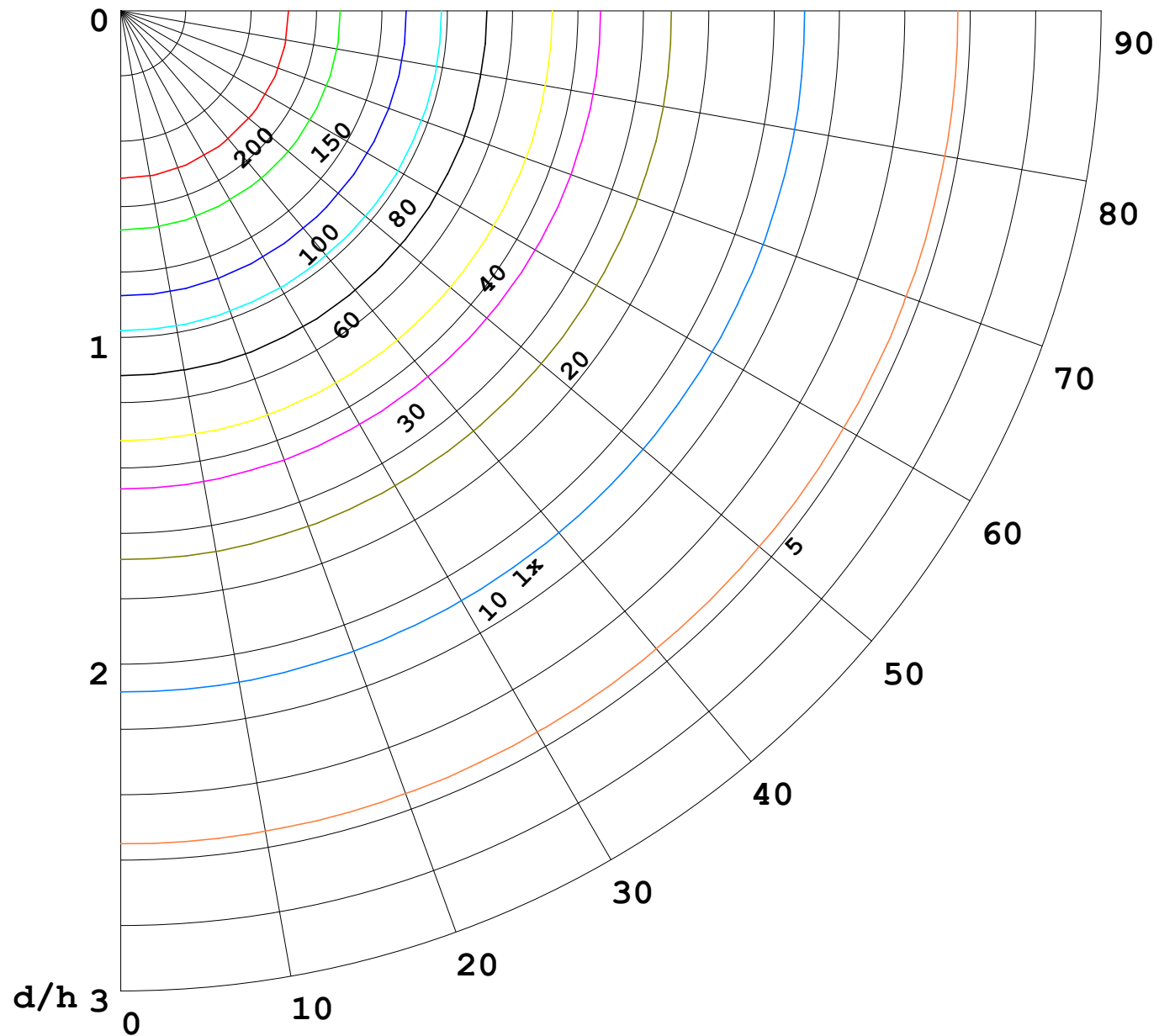
C Range: 0 - 360DEG  
C Interval: 22.5DEG  
Test Speed: HIGH  
Temperature:25.3℃  
Operators:Cloud  
Test Date:2024-11-05

γ Range: 0 - 180DEG  
γ Interval: 1.0DEG  
Test System:EVERFINE GO-2000B\_V1 SYSTEM V2.00.488  
Humidity:65.0%  
Test Distance:6.360m [K=1.0000]  
Remarks:



1000 lm

$\kappa = 1$



F = 1000 lm  
 K = 0.7  
 Hcc = 0.8 m  
 Hfc = 0.0 m  
 Eave = 100 lx

	Pcc	Pw	Pfc
—————	70	50	30
—————	50	30	20

