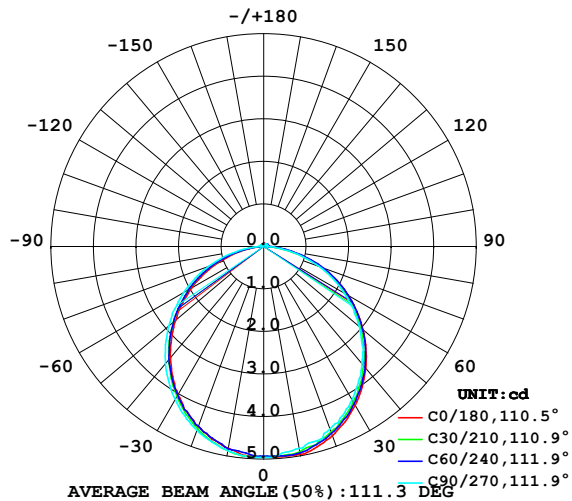


## LUMINAIRE PHOTOMETRIC TEST REPORT

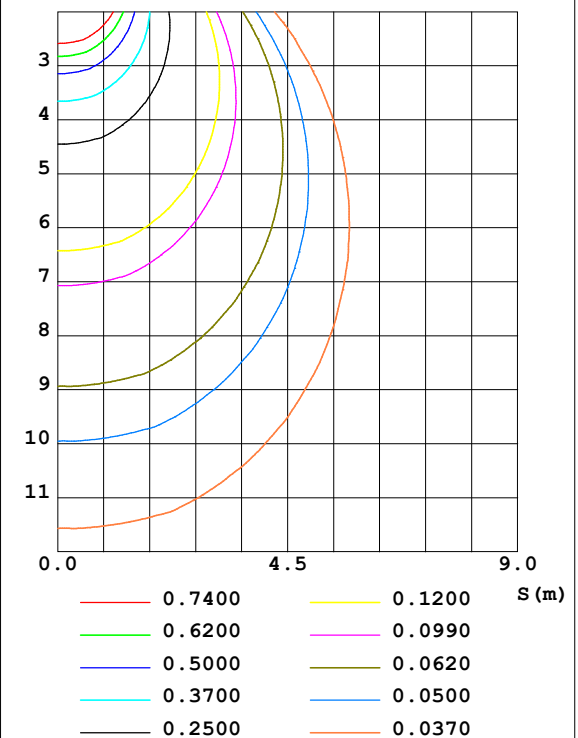
Test:U:24.00V I:0.1943A P:4.663W PF:1.000 Lamp Flux:14.3131x1 lm		
NAME: SF09-24V-3535-84-RGB-B	TYPE: 硅胶	WEIGHT:
DIM.: 16mm*8mm	SPEC.:	SERIAL No.: 202301001
MFR.: OLYMPIA	SUR.: 1*0.016	PROTECTION ANGLE:

DATA OF LAMP		PHOTOMETRIC DATA				Eff: 3.07 lm/W
MODEL	3535	I <sub>max</sub> (cd)	4.966	S/MH (C0/180)	1.29	
NOMINAL POWER (W)	13	LOR (%)	100.0	S/MH (C90/270)	1.25	
RATED VOLTAGE (V)	24	TOTAL FLUX (lm)	14.313	η UP, DN (C0-180)	1.3, 49.8	
NOMINAL FLUX (lm)	14.3131	CIE CLASS	DIRECT	η UP, DN (C180-360)	0.8, 48.1	
LAMPS INSIDE	1	η up (%)	2.1	CIBSE SHR NOM	1.25	
TEST VOLTAGE (V)	24.0	η down (%)	97.9	CIBSE SHR MAX	1.35	

LUMINOUS INTENSITY DISTRIBUTION DIAGRAM



C0 PLANE ISOLUX DIAGRAM (UNIT:lx)



C Range: 0 - 360DEG  
C Interval: 30.0DEG  
Test Speed: HIGH  
Temperature: 25.3DEG  
Operators: WFW  
Test Date: 2023-01-05

γ Range: 0 - 180DEG  
γ Interval: 1.0DEG  
Test System: EVERFINE GO-2000B\_V1 SYSTEM V2.0.269  
Humidity: 65.0%  
Test Distance: 10.800m [K=1.0000]  
Remarks:

ZONAL FLUX DIAGRAM  
AND LUMINANCE LIMITATION CURVES

## ZONAL FLUX DIAGRAM:

$\gamma$	C0	C45	C90	C135	C180	C225	C270	C315	$\gamma$	$\Phi$ zone	$\Phi$ total	%lum, lamp
10	4.959	4.914	4.820	4.796	4.813	4.851	4.876	4.852	0- 10	0.4669	0.4669	3.26,3.26
20	4.731	4.651	4.564	4.512	4.502	4.523	4.599	4.581	10- 20	1.337	1.804	12.6,12.6
30	4.308	4.239	4.162	4.072	4.030	4.055	4.156	4.173	20- 30	2.019	3.824	26.7,26.7
40	3.734	3.685	3.601	3.501	3.407	3.470	3.595	3.615	30- 40	2.422	6.246	43.6,43.6
50	3.048	3.002	2.936	2.822	2.707	2.781	2.910	2.933	40- 50	2.501	8.747	61.1,61.1
60	2.279	2.251	2.174	2.095	1.959	2.043	2.175	2.182	50- 60	2.253	11.00	76.9,76.9
70	1.476	1.451	1.384	1.302	1.163	1.253	1.379	1.402	60- 70	1.735	12.73	89,89
80	0.6381	0.6268	0.6016	0.5231	0.4079	0.4846	0.5962	0.5782	70- 80	0.9983	13.73	95.9,95.9
90	0.0626	0.0694	0.0762	0.1107	0.0069	0.0624	0.0833	0.0278	80- 90	0.2753	14.01	97.9,97.9
100	0.0208	0.0623	0.0762	0.0796	0.0069	0.0520	0.0762	0.0242	90-100	0.0589	14.07	98.3,98.3
110	0.0069	0.0658	0.0762	0.0796	0.0069	0.0485	0.0762	0.0242	100-110	0.0537	14.12	98.7,98.7
120	0.0069	0.0658	0.0762	0.0762	0.0208	0.0312	0.0693	0.0208	110-120	0.0475	14.17	99,99
130	0.0139	0.0693	0.0762	0.0727	0.0208	0.0346	0.0693	0.0208	120-130	0.0425	14.21	99.3,99.3
140	0.0139	0.0624	0.0693	0.0659	0.0208	0.0346	0.0554	0.0277	130-140	0.0367	14.25	99.5,99.5
150	0.0278	0.0623	0.0416	0.0589	0.0485	0.0346	0.0554	0.0242	140-150	0.0288	14.28	99.7,99.7
160	0.0277	0.0554	0.0416	0.0519	0.0485	0.0346	0.0554	0.0242	150-160	0.0200	14.30	99.9,99.9
170	0.0761	0.0450	0.0416	0.0485	0.0486	0.0450	0.0554	0.0277	160-170	0.0121	14.31	100,100
180	0.0623	0.0623	0.0416	0.0485	0.0346	0.0485	0.0554	0.0589	170-180	0.0044	14.31	100,100
DEG	LUMINOUS INTENSITY:cd									UNIT:lm		



LUMINANCE cd/(m2)		
G (DEG)	C0/180	C90/270
85	32	29
80	37	35
75	40	37
70	43	40
65	45	42
60	46	43
55	47	45
50	47	46
45	48	46

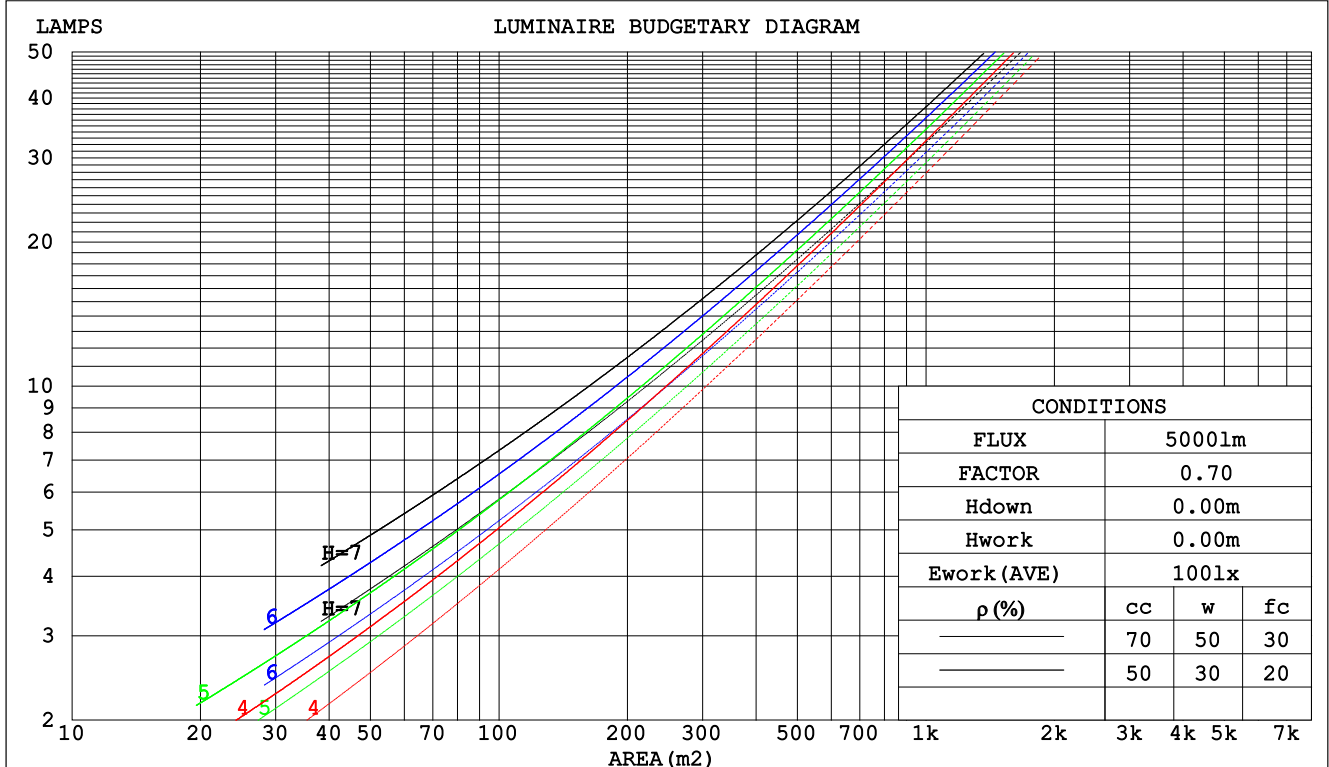
C Range: 0 - 360DEG  
C Interval: 30.0DEG  
Test Speed: HIGH  
Temperature:25.3DEG  
Operators:WFW  
Test Date:2023-01-05

$\gamma$  Range: 0 - 180DEG  
 $\gamma$  Interval: 1.0DEG  
Test System:EVERFINE GO-2000B\_V1 SYSTEM V2.0.269  
Humidity:65.0%  
Test Distance:10.800m [K=1.0000]  
Remarks:

## CU AND LUMINAIRE BUDGETARY ESTIMATE DIAGRAM

Test:U:24.00V I:0.1943A P:4.663W PF:1.000 Lamp Flux:14.3131x1 lm		
NAME: SF09-24V-3535-84-RGB-B	TYPE: 硅胶	WEIGHT:
DIM.: 16mm*8mm	SPEC.:	SERIAL No.:202301001
MFR.: OLYMPIA	SUR.:1*0.016	PROTECTION ANGLE:

$\rho_{cc}$	80%			70%			50%			30%			10%			0
$\rho_w$	50%	30%	10%	50%	30%	10%	50%	30%	10%	50%	30%	10%	50%	30%	10%	0
$\rho_{fc}$	20%			20%			20%			20%			20%			0
RCR	RCR:Room Cavity Ratio						Coefficients of Utilization(CU)									
0.0	1.19	1.19	1.19	1.16	1.16	1.16	1.10	1.10	1.10	1.05	1.05	1.05	1.00	1.00	1.00	.98
1.0	1.03	.99	.95	1.01	.97	.93	.96	.93	.90	.92	.89	.87	.88	.86	.84	.82
2.0	.90	.83	.77	.88	.82	.76	.84	.79	.74	.80	.76	.72	.77	.73	.70	.68
3.0	.79	.71	.64	.77	.70	.63	.74	.67	.62	.71	.65	.61	.68	.63	.59	.57
4.0	.70	.61	.54	.68	.60	.54	.66	.58	.53	.63	.57	.52	.61	.55	.51	.49
5.0	.62	.53	.47	.61	.53	.46	.59	.51	.46	.57	.50	.45	.54	.49	.44	.42
6.0	.56	.47	.41	.55	.47	.40	.53	.46	.40	.51	.44	.39	.49	.43	.39	.37
7.0	.51	.42	.36	.50	.42	.36	.48	.41	.35	.47	.40	.35	.45	.39	.35	.32
8.0	.46	.38	.32	.46	.38	.32	.44	.37	.32	.43	.36	.31	.41	.35	.31	.29
9.0	.43	.34	.29	.42	.34	.29	.41	.33	.28	.39	.33	.28	.38	.32	.28	.26
10.0	.39	.31	.26	.39	.31	.26	.38	.31	.26	.36	.30	.26	.35	.30	.25	.24



C Range: 0 - 360DEG  
C Interval: 30.0DEG  
Test Speed: HIGH  
Temperature:25.3DEG  
Operators:WFW  
Test Date:2023-01-05

$\gamma$  Range: 0 - 180DEG  
 $\gamma$  Interval: 1.0DEG  
Test System:EVERFINE GO-2000B\_V1 SYSTEM V2.0.269  
Humidity:65.0%  
Test Distance:10.800m [K=1.0000]  
Remarks:

## WEC AND CCEC

Test:U:24.00V I:0.1943A P:4.663W PF:1.000 Lamp Flux:14.3131x1 lm					
NAME: SF09-24V-3535-84-RGB-B			TYPE: 硅胶		WEIGHT:
DIM.: 16mm*8mm			SPEC.:		SERIAL No.:202301001
MFR.: OLYMPIA			SUR.:1*0.016		PROTECTION ANGLE:

pcc	80%			70%			50%			30%			10%			0	
pw	50%	30%	10%	50%	30%	10%	50%	30%	10%	50%	30%	10%	50%	30%	10%	0	
pfc	20%			20%			20%			20%			20%			0	
RCR	RCR:Room Cavity Ratio						Wall Exitance Coefficients(WEC)										
0.0																	
1.0	.310	.176	.056	.302	.172	.055	.288	.165	.053	.275	.158	.051	.262	.152	.049		
2.0	.291	.160	.049	.285	.157	.048	.272	.151	.047	.260	.146	.046	.249	.141	.044		
3.0	.269	.143	.043	.263	.141	.042	.252	.137	.042	.241	.132	.041	.232	.128	.040		
4.0	.249	.129	.038	.243	.127	.038	.233	.124	.037	.224	.120	.036	.215	.117	.036		
5.0	.230	.117	.034	.225	.115	.034	.216	.112	.033	.207	.109	.033	.200	.107	.032		
6.0	.213	.107	.031	.209	.105	.030	.201	.103	.030	.193	.100	.029	.186	.098	.029		
7.0	.198	.098	.028	.194	.097	.028	.187	.095	.027	.180	.092	.027	.174	.090	.027		
8.0	.185	.090	.025	.182	.089	.025	.175	.087	.025	.169	.086	.025	.163	.084	.024		
9.0	.173	.084	.023	.170	.083	.023	.164	.081	.023	.159	.080	.023	.154	.078	.023		
10.0	.163	.078	.022	.160	.077	.022	.155	.076	.021	.150	.074	.021	.145	.073	.021		

pcc	80%			70%			50%			30%			10%			0
pw	50%	30%	10%	50%	30%	10%	50%	30%	10%	50%	30%	10%	50%	30%	10%	0
pfc	20%			20%			20%			20%			20%			0
RCR	RCR:Room Cavity Ratio						Ceiling Cavity Exitance Coefficients(CCEC)									
0.0	.207	.207	.207	.177	.177	.177	.121	.121	.121	.069	.069	.069	.022	.022	.022	
1.0	.197	.172	.151	.168	.148	.130	.115	.102	.090	.066	.059	.052	.021	.019	.017	
2.0	.189	.148	.115	.162	.128	.099	.111	.088	.069	.064	.051	.040	.020	.017	.013	
3.0	.181	.131	.091	.155	.113	.079	.106	.078	.055	.062	.046	.033	.020	.015	.011	
4.0	.173	.118	.075	.149	.102	.065	.102	.071	.046	.059	.041	.027	.019	.014	.009	
5.0	.166	.107	.064	.142	.093	.056	.098	.065	.039	.057	.038	.023	.018	.012	.008	
6.0	.159	.099	.056	.136	.086	.049	.094	.060	.034	.055	.035	.020	.018	.012	.007	
7.0	.152	.092	.050	.131	.080	.044	.090	.056	.031	.052	.033	.018	.017	.011	.006	
8.0	.146	.086	.046	.125	.075	.040	.087	.053	.028	.050	.031	.017	.016	.010	.006	
9.0	.139	.081	.042	.120	.071	.037	.083	.050	.026	.048	.029	.016	.016	.010	.005	
10.0	.134	.077	.039	.115	.067	.034	.080	.047	.024	.047	.028	.015	.015	.009	.005	

C Range: 0 - 360DEG  
 C Interval: 30.0DEG  
 Test Speed: HIGH  
 Temperature:25.3DEG  
 Operators:WFW  
 Test Date:2023-01-05

γ Range: 0 - 180DEG  
 γ Interval: 1.0DEG  
 Test System:EVERFINE GO-2000B\_V1 SYSTEM V2.0.269  
 Humidity:65.0%  
 Test Distance:10.800m [K=1.0000]  
 Remarks:

## Uncorrected UGR Table

Test:U:24.00V I:0.1943A P:4.663W PF:1.000 Lamp Flux:14.3131x1 lm											
NAME: SF09-24V-3535-84-RGB-B					TYPE:硅胶			WEIGHT:			
DIM.: 16mm*8mm					SPEC.:			SERIAL No.:202301001			
MFR.: OLYMPIA					SUR.:1*0.016			PROTECTION ANGLE:			
ceiling/cavity	0.7	0.7	0.5	0.5	0.3	0.7	0.7	0.5	0.5	0.3	
walls	0.5	0.3	0.5	0.3	0.3	0.5	0.3	0.5	0.3	0.3	
working plane	0.2	0.2	0.2	0.2	0.2	0.2	0.2	0.2	0.2	0.2	
Room dimensions		Viewed crosswise				Viewed endwise					
x = 2H y = 2H	2H	2.2	3.7	2.5	3.9	4.2	2.2	3.7	2.5	3.9	4.2
	3H	3.8	5.2	4.1	5.5	5.7	3.8	5.1	4.1	5.4	5.7
	4H	4.5	5.8	4.8	6.1	6.4	4.4	5.7	4.7	6.0	6.3
	6H	4.9	6.2	5.3	6.5	6.8	4.8	6.1	5.2	6.4	6.7
	8H	5.1	6.3	5.4	6.6	6.9	5.0	6.2	5.3	6.5	6.8
12H	5.2	6.3	5.6	6.6	7.0	5.0	6.2	5.4	6.5	6.9	
4H	2H	2.8	4.1	3.2	4.4	4.7	2.8	4.1	3.2	4.4	4.7
	3H	4.6	5.7	5.0	6.1	6.4	4.6	5.8	5.0	6.1	6.4
	4H	5.4	6.4	5.8	6.8	7.1	5.4	6.4	5.8	6.8	7.2
	6H	5.9	6.9	6.4	7.3	7.7	6.0	6.9	6.4	7.3	7.7
	8H	6.1	7.0	6.6	7.4	7.8	6.2	7.0	6.6	7.4	7.9
12H	6.3	7.1	6.7	7.5	7.9	6.3	7.1	6.7	7.5	7.9	
8H	4H	5.6	6.5	6.1	6.9	7.3	5.7	6.5	6.1	6.9	7.4
	6H	6.4	7.1	6.8	7.5	8.0	6.4	7.1	6.9	7.6	8.1
	8H	6.6	7.3	7.1	7.7	8.2	6.7	7.4	7.2	7.8	8.3
	12H	6.8	7.4	7.3	7.9	8.4	6.9	7.5	7.4	8.0	8.5
12H	4H	5.7	6.5	6.1	6.9	7.3	5.7	6.5	6.1	6.9	7.3
	6H	6.4	7.1	6.9	7.5	8.0	6.5	7.1	7.0	7.6	8.1
	8H	6.7	7.3	7.2	7.8	8.3	6.8	7.4	7.3	7.9	8.4
Variations with the observer position at spacings:											
S = 1.0H	+ 0.2 / - 0.2					+ 0.2 / - 0.2					
1.5H	+ 0.1 / - 0.3					+ 0.2 / - 0.3					
2.0H	+ 0.2 / - 0.2					+ 0.2 / - 0.4					

CIE Pub.117 Corrected 14.31 lm Total Lamp Luminous Flux. (8log(F/F0) = -14.8)

C Range: 0 - 360DEG  
 C Interval: 30.0DEG  
 Test Speed: HIGH  
 Temperature: 25.3DEG  
 Operators: WFW  
 Test Date: 2023-01-05

γ Range: 0 - 180DEG  
 γ Interval: 1.0DEG  
 Test System: EVERFINE GO-2000B\_V1 SYSTEM V2.0.269  
 Humidity: 65.0%  
 Test Distance: 10.800m [K=1.0000]  
 Remarks:

## UTILIZATION FACTORS TABLE

Test:U:24.00V I:0.1943A P:4.663W PF:1.000 Lamp Flux:14.3131x1 lm		
NAME: SF09-24V-3535-84-RGB-B	TYPE: 硅胶	WEIGHT:
DIM.: 16mm*8mm	SPEC.:	SERIAL No.:202301001
MFR.: OLYMPIA	SUR.:1*0.016	PROTECTION ANGLE:

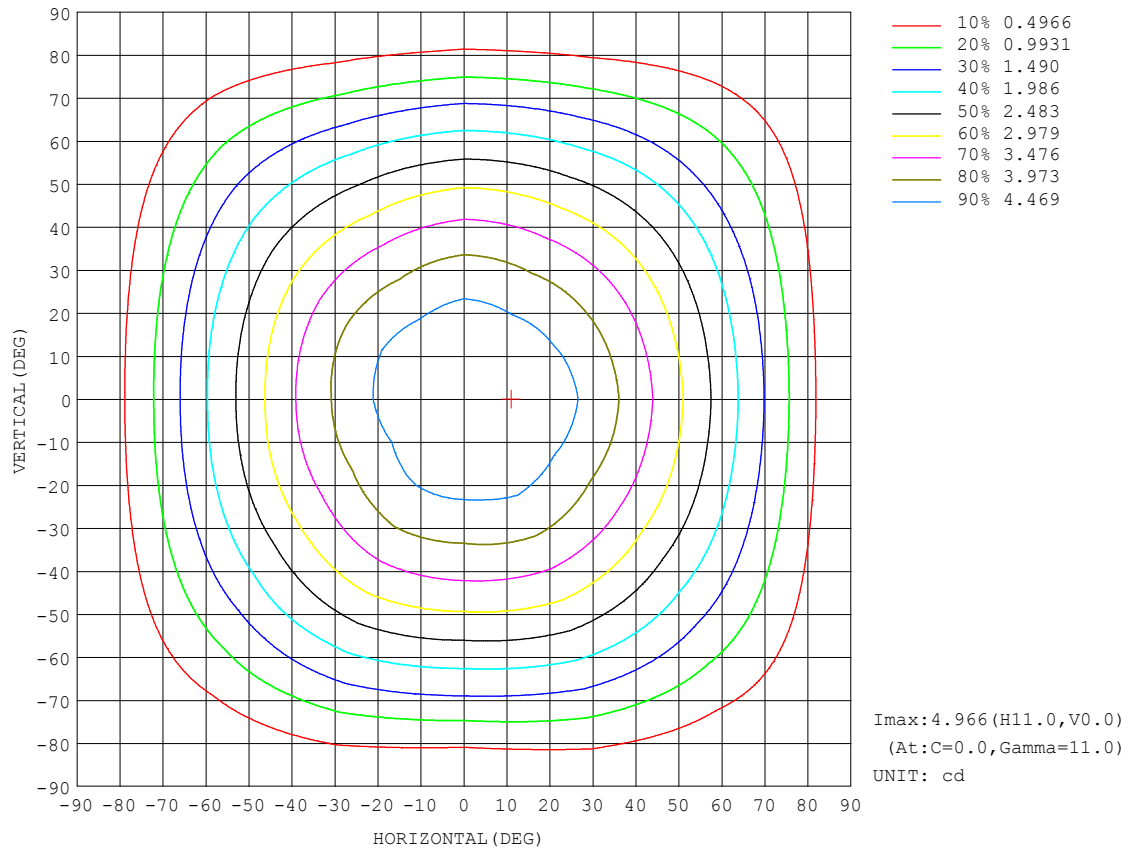
REFLECTANCE										
Ceiling	0.8	0.8	0.8	0.7	0.7	0.7	0.5	0.5	0.5	0
Walls	0.7	0.5	0.3	0.7	0.5	0.3	0.7	0.5	0.3	0
Working plane	0.2	0.2	0.2	0.2	0.2	0.2	0.2	0.2	0.2	0
ROOM INDEX	UTILIZATION FACTORS (PERCENT) $k(RI) \times RCR = 5$									
$k = 0.60$	57	45	38	56	45	38	55	44	38	32
0.80	67	55	48	66	55	48	64	54	47	40
1.00	75	64	57	74	63	56	72	65	56	48
1.25	82	72	65	81	71	64	78	69	63	56
1.50	87	77	70	86	76	70	82	74	68	61
2.00	94	86	79	92	84	78	88	82	76	68
2.50	98	90	84	96	89	83	92	86	81	72
3.00	102	95	89	99	93	88	95	90	85	76
4.00	106	100	95	103	98	94	98	94	91	81
5.00	108	103	99	105	101	97	101	97	94	84
ROOM INDEX	UF (total)									Direct
According to DIN EN 13032-2 2004			Suspended					SHRNM = 1.25		

C Range: 0 - 360DEG  
 C Interval: 30.0DEG  
 Test Speed: HIGH  
 Temperature:25.3DEG  
 Operators:WFW  
 Test Date:2023-01-05

$\gamma$  Range: 0 - 180DEG  
 $\gamma$  Interval: 1.0DEG  
 Test System:EVERFINE GO-2000B\_V1 SYSTEM V2.0.269  
 Humidity:65.0%  
 Test Distance:10.800m [K=1.0000]  
 Remarks:

## ISOCANDELA DIAGRAM

Test:U:24.00V I:0.1943A P:4.663W PF:1.000 Lamp Flux:14.3131x1 lm		
NAME: SF09-24V-3535-84-RGB-B	TYPE: 硅胶	WEIGHT:
DIM.: 16mm*8mm	SPEC.:	SERIAL No.:202301001
MFR.: OLYMPIA	SUR.:1*0.016	PROTECTION ANGLE:

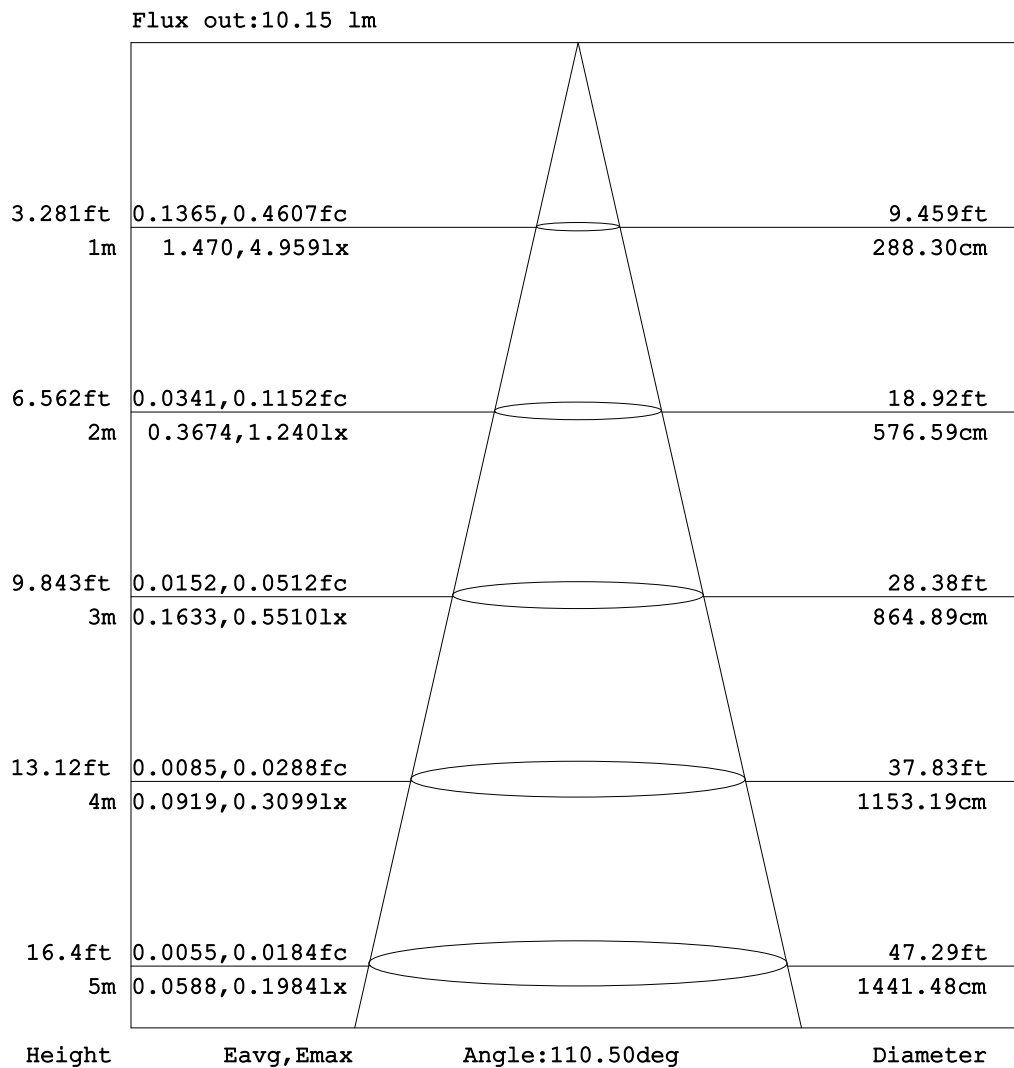


C Range: 0 - 360DEG  
C Interval: 30.0DEG  
Test Speed: HIGH  
Temperature:25.3DEG  
Operators:WFW  
Test Date:2023-01-05

$\gamma$  Range: 0 - 180DEG  
 $\gamma$  Interval: 1.0DEG  
Test System:EVERFINE GO-2000B\_V1 SYSTEM V2.0.269  
Humidity:65.0%  
Test Distance:10.800m [K=1.0000]  
Remarks:

## AAI Figure

Test:U:24.00V I:0.1943A P:4.663W PF:1.000 Lamp Flux:14.313lx1 lm		
NAME: SF09-24V-3535-84-RGB-B	TYPE: 硅胶	WEIGHT:
DIM.: 16mm*8mm	SPEC.:	SERIAL No.:202301001
MFR.: OLYMPIA	SUR.:1*0.016	PROTECTION ANGLE:



Note: The Curves indicate the illuminated area and the average illumination when the luminaire is at different distance.

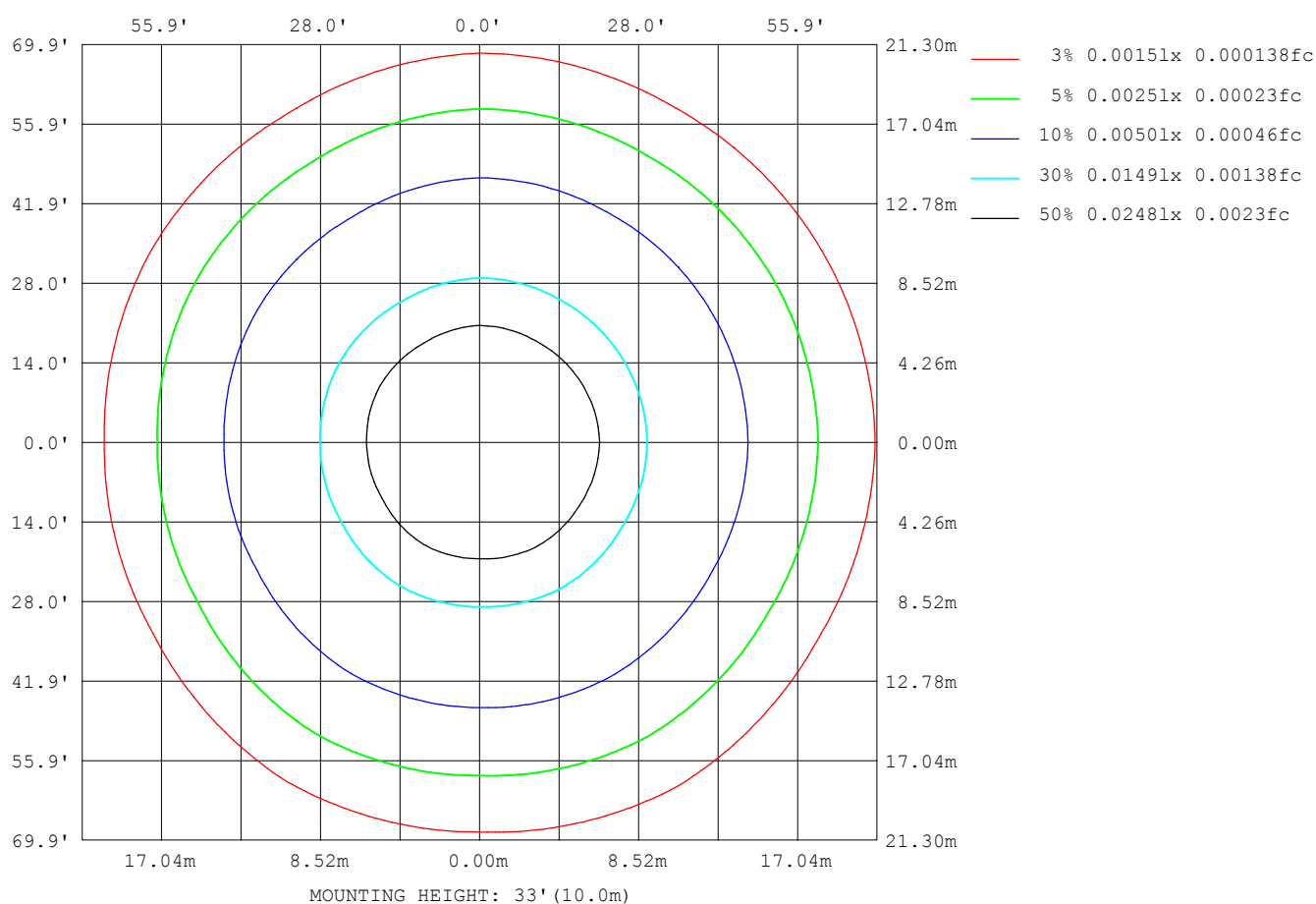
C Range: 0 - 360DEG  
C Interval: 30.0DEG  
Test Speed: HIGH  
Temperature: 25.3DEG  
Operators: WFW  
Test Date: 2023-01-05

γ Range: 0 - 180DEG  
γ Interval: 1.0DEG  
Test System: EVERFINE GO-2000B\_V1 SYSTEM V2.0.269  
Humidity: 65.0%  
Test Distance: 10.800m [K=1.0000]  
Remarks:



## ISOLUX DIAGRAM

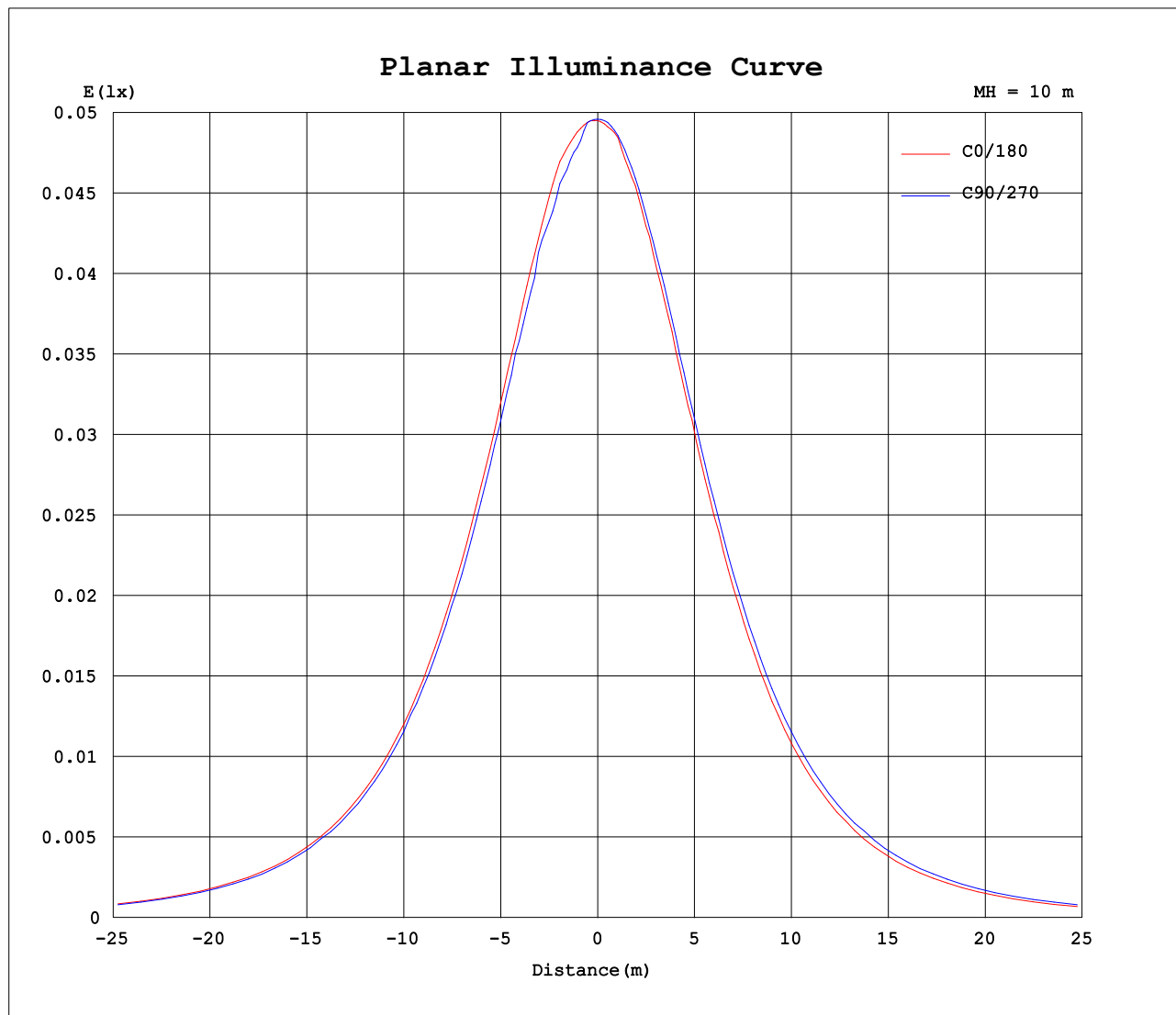
Test:U:24.00V I:0.1943A P:4.663W PF:1.000 Lamp Flux:14.313lx 1m		
NAME: SF09-24V-3535-84-RGB-B	TYPE: 硅胶	WEIGHT:
DIM.: 16mm*8mm	SPEC.:	SERIAL No.: 202301001
MFR.: OLYMPIA	SUR.: 1*0.016	PROTECTION ANGLE:



C Range: 0 - 360DEG  
C Interval: 30.0DEG  
Test Speed: HIGH  
Temperature: 25.3DEG  
Operators: WFW  
Test Date: 2023-01-05

$\gamma$  Range: 0 - 180DEG  
 $\gamma$  Interval: 1.0DEG  
Test System: EVERFINE GO-2000B\_V1 SYSTEM V2.0.269  
Humidity: 65.0%  
Test Distance: 10.800m [K=1.0000]  
Remarks:

## Planar Illuminance Curve



C Range: 0 - 360DEG  
C Interval: 30.0DEG  
Test Speed: HIGH  
Temperature: 25.3DEG  
Operators: WFW  
Test Date: 2023-01-05

$\gamma$  Range: 0 - 180DEG  
 $\gamma$  Interval: 1.0DEG  
Test System: EVERFINE GO-2000B\_V1 SYSTEM V2.0.269  
Humidity: 65.0%  
Test Distance: 10.800m [K=1.0000]  
Remarks:

## LUMINOUS DISTRIBUTION INTENSITY DATA

Test:U:24.00V I:0.1943A P:4.663W PF:1.000 Lamp Flux:14.3131x1 lm		
NAME: SF09-24V-3535-84-RGB-B	TYPE: 硅胶	WEIGHT:
DIM.: 16mm*8mm	SPEC.:	SERIAL No.:202301001
MFR.: OLYMPIA	SUR.:1*0.016	PROTECTION ANGLE:

Table--1

UNIT: cd

C (DEG) γ (DEG)	0	30	60	90	120	150	180	210	240	270	300	330							
0	4.95	4.94	4.93	4.96	4.88	4.86	4.95	4.94	4.93	4.96	4.88	4.86							
5	4.96	4.94	4.94	4.88	4.88	4.82	4.93	4.95	4.88	4.95	4.86	4.94							
10	4.96	4.90	4.93	4.82	4.86	4.74	4.81	4.88	4.83	4.88	4.82	4.88							
15	4.88	4.81	4.82	4.74	4.73	4.61	4.70	4.74	4.67	4.75	4.71	4.78							
20	4.73	4.63	4.67	4.56	4.58	4.45	4.50	4.55	4.49	4.60	4.54	4.63							
25	4.54	4.45	4.48	4.39	4.38	4.25	4.27	4.34	4.29	4.39	4.37	4.44							
30	4.31	4.22	4.26	4.16	4.15	4.00	4.03	4.07	4.04	4.16	4.13	4.21							
35	4.04	3.95	4.00	3.88	3.89	3.71	3.73	3.79	3.77	3.89	3.86	3.95							
40	3.73	3.66	3.71	3.60	3.60	3.41	3.41	3.47	3.47	3.60	3.58	3.65							
45	3.40	3.32	3.39	3.28	3.27	3.08	3.07	3.14	3.14	3.27	3.25	3.33							
50	3.05	2.97	3.03	2.94	2.92	2.72	2.71	2.78	2.78	2.91	2.89	2.97							
55	2.67	2.61	2.67	2.60	2.56	2.37	2.33	2.40	2.40	2.55	2.53	2.60							
60	2.28	2.21	2.29	2.17	2.20	1.99	1.96	2.04	2.04	2.18	2.15	2.22							
65	1.89	1.81	1.91	1.79	1.80	1.60	1.56	1.66	1.65	1.79	1.76	1.84							
70	1.48	1.41	1.50	1.38	1.40	1.20	1.16	1.25	1.26	1.38	1.38	1.43							
75	1.05	0.98	1.08	0.97	0.99	0.82	0.77	0.85	0.85	0.98	0.95	1.01							
80	0.64	0.57	0.68	0.60	0.61	0.44	0.41	0.49	0.48	0.60	0.55	0.61							
85	0.28	0.21	0.33	0.26	0.30	0.15	0.12	0.19	0.17	0.26	0.19	0.25							
90	0.06	0.02	0.12	0.08	0.15	0.07	0.01	0.06	0.06	0.08	0.03	0.03							
95	0.02	0.02	0.10	0.08	0.14	0.03	0.01	0.04	0.06	0.08	0.04	0.00							
100	0.02	0.03	0.10	0.08	0.12	0.03	0.01	0.03	0.07	0.08	0.05	0.00							
105	0.02	0.03	0.10	0.08	0.12	0.03	0.01	0.03	0.06	0.08	0.05	0.00							
110	0.01	0.03	0.10	0.08	0.12	0.03	0.01	0.03	0.06	0.08	0.05	0.00							
115	0.01	0.03	0.09	0.08	0.12	0.03	0.02	0.00	0.06	0.08	0.05	0.00							
120	0.01	0.04	0.09	0.08	0.12	0.03	0.02	0.00	0.06	0.07	0.04	0.00							
125	0.01	0.04	0.09	0.08	0.12	0.03	0.02	0.00	0.06	0.07	0.04	0.00							
130	0.01	0.05	0.09	0.08	0.11	0.03	0.02	0.00	0.07	0.07	0.04	0.00							
135	0.01	0.05	0.09	0.08	0.11	0.03	0.02	0.01	0.06	0.06	0.05	0.01							
140	0.01	0.05	0.08	0.07	0.10	0.03	0.02	0.01	0.06	0.06	0.05	0.01							
145	0.01	0.05	0.08	0.07	0.10	0.03	0.04	0.01	0.06	0.06	0.04	0.01							
150	0.03	0.05	0.08	0.04	0.08	0.03	0.05	0.01	0.06	0.06	0.04	0.01							
155	0.03	0.04	0.07	0.04	0.08	0.03	0.05	0.01	0.06	0.06	0.04	0.01							
160	0.03	0.04	0.07	0.04	0.07	0.03	0.05	0.01	0.06	0.06	0.04	0.01							
165	0.03	0.04	0.07	0.04	0.06	0.03	0.05	0.01	0.06	0.06	0.05	0.01							
170	0.08	0.04	0.05	0.04	0.06	0.03	0.05	0.03	0.06	0.06	0.05	0.01							
175	0.06	0.06	0.05	0.04	0.08	0.03	0.06	0.03	0.06	0.06	0.05	0.01							
180	0.06	0.06	0.06	0.04	0.06	0.03	0.03	0.03	0.06	0.06	0.06	0.06							

C Range: 0 - 360DEG  
C Interval: 30.0DEG  
Test Speed: HIGH  
Temperature:25.3DEG  
Operators:WFW  
Test Date:2023-01-05

γ Range: 0 - 180DEG  
γ Interval: 1.0DEG  
Test System:EVERFINE GO-2000B\_V1 SYSTEM V2.0.269  
Humidity:65.0%  
Test Distance:10.800m [K=1.0000]  
Remarks:

Photometric Data Table [cd]

G/C	0.0	30.0	60.0	90.0	120.0	150.0	180.0	210.0	240.0	270.0
0.0	4.952	4.938	4.931	4.959	4.876	4.862	4.952	4.938	4.931	4.959
3.0	4.959	4.938	4.938	4.959	4.876	4.841	4.931	4.938	4.917	4.959
6.0	4.959	4.924	4.945	4.862	4.876	4.813	4.924	4.945	4.862	4.938
9.0	4.959	4.910	4.938	4.820	4.869	4.751	4.834	4.897	4.834	4.890
12.0	4.945	4.841	4.897	4.772	4.807	4.702	4.772	4.828	4.744	4.834
15.0	4.876	4.813	4.821	4.737	4.731	4.606	4.695	4.744	4.668	4.751
18.0	4.786	4.709	4.745	4.619	4.641	4.509	4.577	4.634	4.577	4.668
21.0	4.696	4.606	4.641	4.529	4.537	4.405	4.473	4.516	4.480	4.564
24.0	4.578	4.488	4.523	4.418	4.426	4.273	4.321	4.378	4.335	4.447
27.0	4.447	4.370	4.405	4.287	4.295	4.148	4.176	4.239	4.196	4.308
30.0	4.308	4.217	4.260	4.162	4.149	3.996	4.030	4.073	4.037	4.156
33.0	4.149	4.065	4.101	3.996	3.997	3.823	3.850	3.914	3.885	4.004
36.0	3.976	3.905	3.941	3.830	3.837	3.649	3.677	3.733	3.705	3.837
39.0	3.796	3.712	3.775	3.663	3.651	3.490	3.483	3.540	3.531	3.657
42.0	3.602	3.532	3.581	3.490	3.457	3.282	3.275	3.346	3.324	3.463
45.0	3.401	3.324	3.387	3.275	3.270	3.082	3.067	3.138	3.136	3.270
48.0	3.194	3.137	3.180	3.074	3.069	2.874	2.853	2.909	2.922	3.055
51.0	2.979	2.901	2.965	2.853	2.854	2.659	2.631	2.702	2.700	2.840
54.0	2.757	2.673	2.744	2.638	2.633	2.430	2.402	2.487	2.486	2.653
57.0	2.522	2.451	2.522	2.416	2.411	2.209	2.174	2.245	2.250	2.397
60.0	2.279	2.209	2.293	2.174	2.196	1.994	1.959	2.044	2.042	2.175
63.0	2.058	1.980	2.065	1.952	1.961	1.765	1.724	1.801	1.813	1.940
66.0	1.802	1.738	1.823	1.717	1.719	1.537	1.488	1.573	1.564	1.704
69.0	1.552	1.488	1.580	1.488	1.483	1.281	1.246	1.337	1.350	1.469
72.0	1.303	1.239	1.338	1.225	1.227	1.045	1.003	1.095	1.086	1.220
75.0	1.047	0.9828	1.081	0.9692	0.9913	0.8166	0.7750	0.8526	0.8511	0.9841
78.0	0.7974	0.7267	0.8390	0.7404	0.7558	0.5812	0.5465	0.6309	0.6225	0.7418
81.0	0.5618	0.4911	0.5965	0.4912	0.5409	0.3803	0.3454	0.4298	0.4010	0.5200
84.0	0.3540	0.2764	0.3887	0.2974	0.3539	0.1867	0.1588	0.2430	0.2073	0.3261
87.0	0.1669	0.0898	0.2222	0.1520	0.2151	0.0761	0.0624	0.1318	0.0623	0.1665
90.0	0.0626	0.0208	0.1180	0.0762	0.1524	0.0690	0.0624	0.0624	0.0623	0.0833
93.0	0.0278	0.0208	0.1108	0.0762	0.1385	0.0346	0.0069	0.0485	0.0623	0.0762
96.0	0.0208	0.0208	0.1039	0.0762	0.1385	0.0346	0.0069	0.0416	0.0623	0.0762
99.0	0.0208	0.0346	0.0971	0.0762	0.1249	0.0346	0.0069	0.0346	0.0624	0.0762
102.0	0.0208	0.0277	0.0970	0.0762	0.1247	0.0346	0.0069	0.0346	0.0623	0.0762
105.0	0.0208	0.0277	0.0970	0.0762	0.1247	0.0346	0.0069	0.0346	0.0623	0.0762
108.0	0.0139	0.0277	0.0970	0.0762	0.1247	0.0346	0.0069	0.0346	0.0623	0.0830
111.0	0.0069	0.0346	0.0901	0.0762	0.1247	0.0346	0.0069	0.0278	0.0623	0.0762
114.0	0.0069	0.0346	0.0900	0.0762	0.1177	0.0346	0.0071	0.0208	0.0623	0.0762
117.0	0.0069	0.0346	0.0900	0.0762	0.1177	0.0346	0.0208	0	0.0623	0.0693
120.0	0.0069	0.0416	0.0900	0.0762	0.1177	0.0346	0.0208	0	0.0623	0.0693
123.0	0.0139	0.0416	0.0900	0.0762	0.1177	0.0346	0.0208	0	0.0623	0.0693
126.0	0.0139	0.0416	0.0900	0.0762	0.1177	0.0346	0.0208	0	0.0623	0.0693
129.0	0.0139	0.0485	0.0900	0.0762	0.1108	0.0346	0.0208	0	0.0693	0.0693
132.0	0.0139	0.0485	0.0900	0.0762	0.1108	0.0346	0.0208	0	0.0691	0.0693
135.0	0.0139	0.0485	0.0900	0.0762	0.1108	0.0346	0.0208	0.0069	0.0554	0.0555
138.0	0.0139	0.0485	0.0832	0.0693	0.1177	0.0346	0.0208	0.0069	0.0555	0.0554
141.0	0.0139	0.0485	0.0762	0.0693	0.0970	0.0346	0.0208	0.0069	0.0623	0.0554
144.0	0.0139	0.0485	0.0762	0.0693	0.0970	0.0346	0.0416	0.0069	0.0623	0.0554
147.0	0.0276	0.0485	0.0762	0.0692	0.1038	0.0346	0.0485	0.0069	0.0623	0.0554
150.0	0.0278	0.0485	0.0762	0.0416	0.0831	0.0346	0.0485	0.0069	0.0623	0.0554
153.0	0.0277	0.0484	0.0762	0.0416	0.0831	0.0346	0.0485	0.0069	0.0623	0.0554
156.0	0.0277	0.0416	0.0693	0.0416	0.0693	0.0346	0.0485	0.0069	0.0623	0.0554
159.0	0.0277	0.0416	0.0693	0.0416	0.0693	0.0346	0.0485	0.0069	0.0623	0.0554
162.0	0.0277	0.0416	0.0623	0.0416	0.0693	0.0346	0.0485	0.0069	0.0623	0.0554
165.0	0.0277	0.0416	0.0692	0.0416	0.0623	0.0346	0.0485	0.0069	0.0623	0.0554
168.0	0.0893	0.0416	0.0485	0.0416	0.0623	0.0346	0.0485	0.0069	0.0623	0.0554
171.0	0.0625	0.0416	0.0485	0.0416	0.0486	0.0346	0.0554	0.0277	0.0623	0.0554
174.0	0.0623	0.0623	0.0485	0.0416	0.0553	0.0346	0.0554	0.0277	0.0623	0.0554
177.0	0.0623	0.0623	0.0485	0.0416	0.0623	0.0346	0.0554	0.0277	0.0760	0.0554
180.0	0.0623	0.0623	0.0623	0.0416	0.0623	0.0346	0.0346	0.0346	0.0623	0.0554
G/C	300.0	330.0								
0.0	4.876	4.862								
3.0	4.869	4.897								
6.0	4.848	4.918								
9.0	4.820	4.897								
12.0	4.778	4.834								
15.0	4.709	4.779								
18.0	4.606	4.689								
21.0	4.502	4.585								
24.0	4.411	4.474								
27.0	4.273	4.343								
30.0	4.134	4.211								

C Range: 0 - 360DEG  
 C Interval: 30.0DEG  
 Test Speed: HIGH  
 Temperature: 25.3DEG  
 Operators: WFW  
 Test Date: 2023-01-05

γ Range: 0 - 180DEG  
 γ Interval: 1.0DEG  
 Test System: EVERFINE GO-2000B\_V1 SYSTEM V2.0.269  
 Humidity: 65.0%  
 Test Distance: 10.800m [K=1.0000]  
 Remarks:

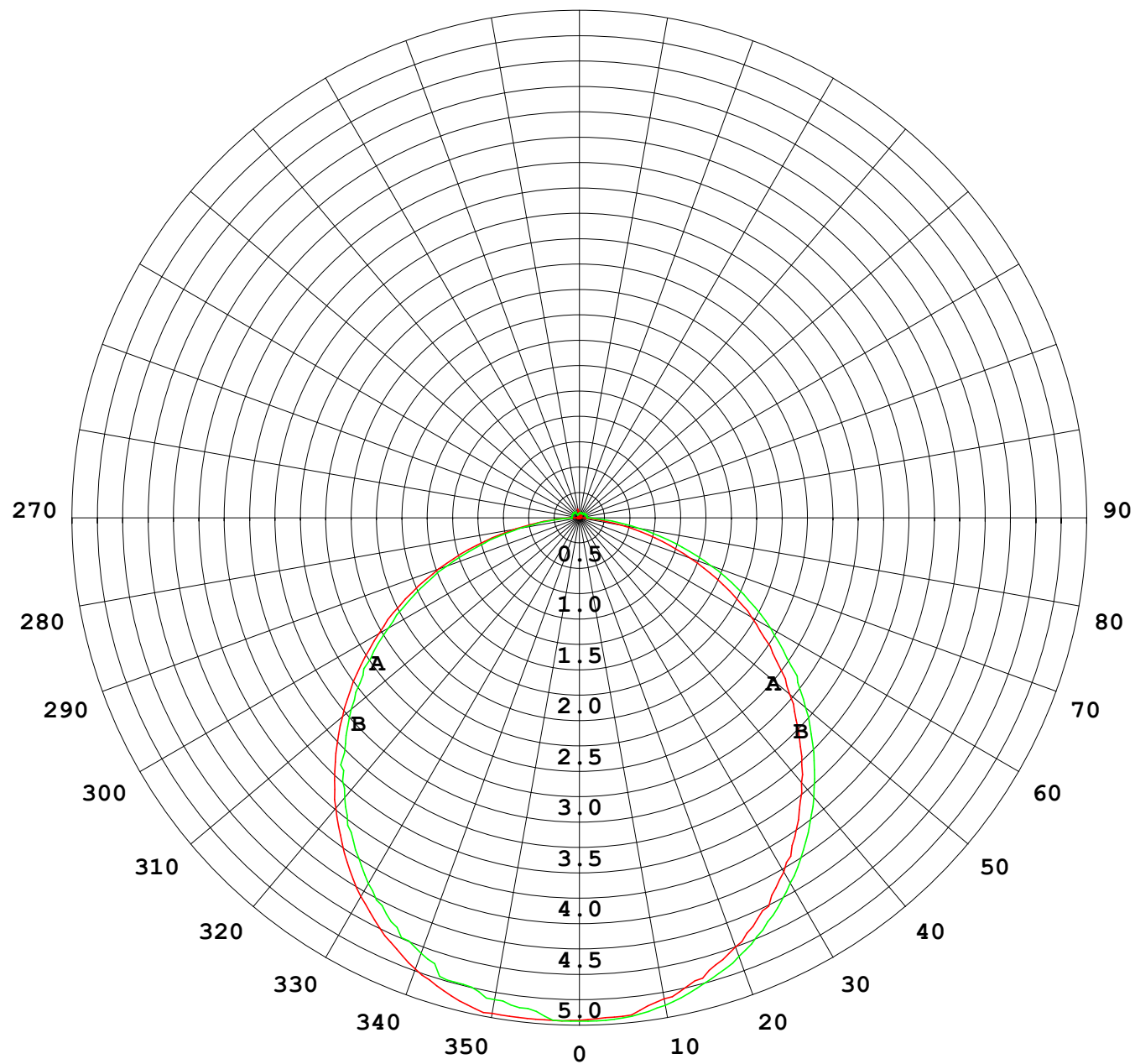
## Photometric Data Table [cd]

33.0	3.968	4.052
36.0	3.802	3.879
39.0	3.622	3.706
42.0	3.435	3.519
45.0	3.254	3.332
48.0	3.046	3.110
51.0	2.818	2.896
54.0	2.590	2.674
57.0	2.368	2.452
60.0	2.146	2.217
63.0	1.931	1.995
66.0	1.703	1.753
69.0	1.440	1.442
72.0	1.197	1.261
75.0	0.9480	1.012
78.0	0.7192	0.7625
81.0	0.4838	0.5339
84.0	0.2555	0.3055
87.0	0.0828	0.1390
90.0	0.0277	0.0279
93.0	0.0416	0.0070
96.0	0.0416	0
99.0	0.0485	0
102.0	0.0485	0
105.0	0.0485	0
108.0	0.0485	0
111.0	0.0485	0
114.0	0.0485	0
117.0	0.0485	0
120.0	0.0416	0
123.0	0.0416	0
126.0	0.0416	0
129.0	0.0416	0
132.0	0.0485	0
135.0	0.0485	0.0069
138.0	0.0485	0.0069
141.0	0.0416	0.0069
144.0	0.0416	0.0069
147.0	0.0416	0.0069
150.0	0.0416	0.0069
153.0	0.0416	0.0069
156.0	0.0416	0.0069
159.0	0.0416	0.0069
162.0	0.0554	0.0069
165.0	0.0485	0.0069
168.0	0.0485	0.0069
171.0	0.0485	0.0069
174.0	0.0485	0.0069
177.0	0.0485	0.0069
180.0	0.0554	0.0623

C Range: 0 - 360DEG  
 C Interval: 30.0DEG  
 Test Speed: HIGH  
 Temperature: 25.3DEG  
 Operators: WFW  
 Test Date: 2023-01-05

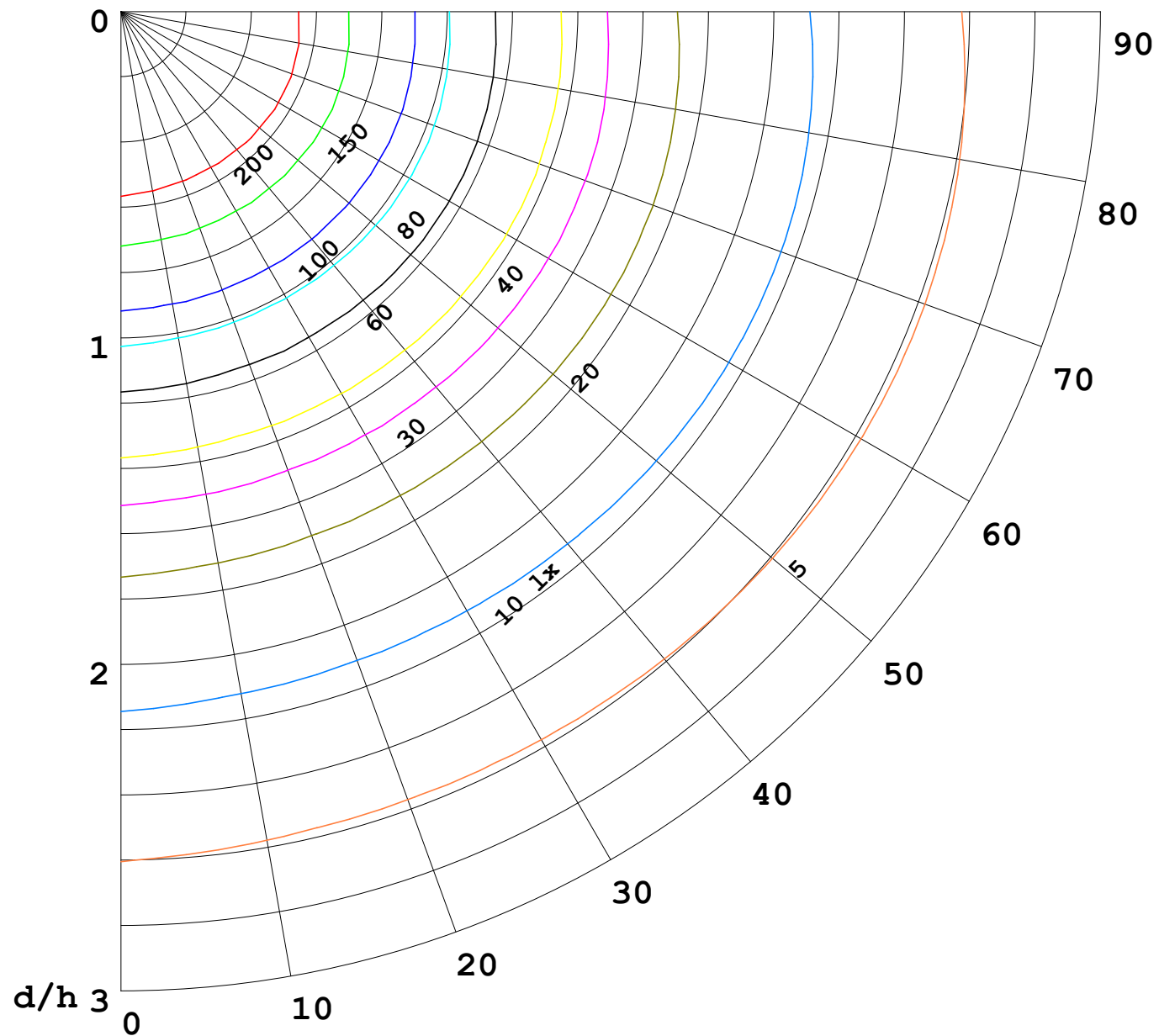
γ Range: 0 - 180DEG  
 γ Interval: 1.0DEG  
 Test System: EVERFINE GO-2000B\_V1 SYSTEM V2.0.269  
 Humidity: 65.0%  
 Test Distance: 10.800m [K=1.0000]  
 Remarks:

I (cd)



1000 lm

$\kappa = 1$



F = 5000 lm  
 K = 0.7  
 Hcc = 0.0 m  
 Hfc = 0.0 m  
 Eave = 100 lx

	Pcc	Pw	Pfc
—	70	50	30
—	50	30	20

