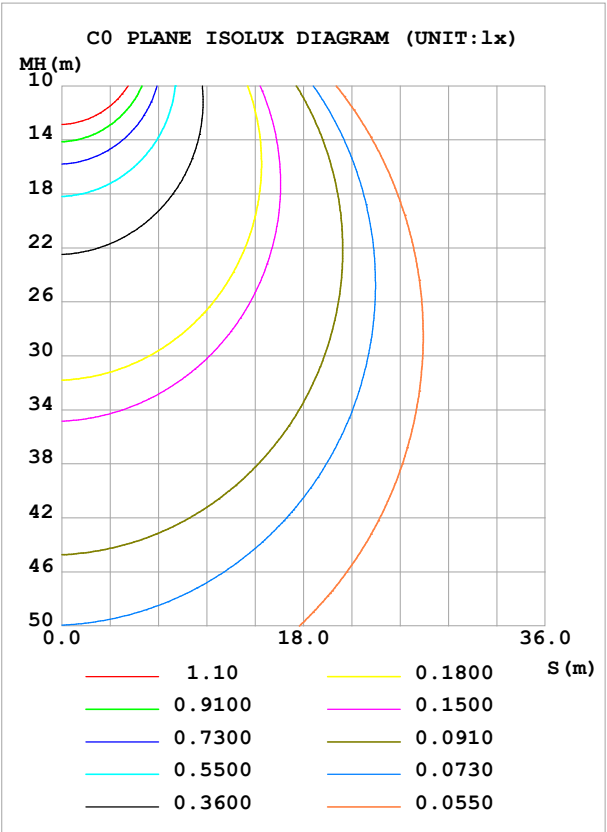
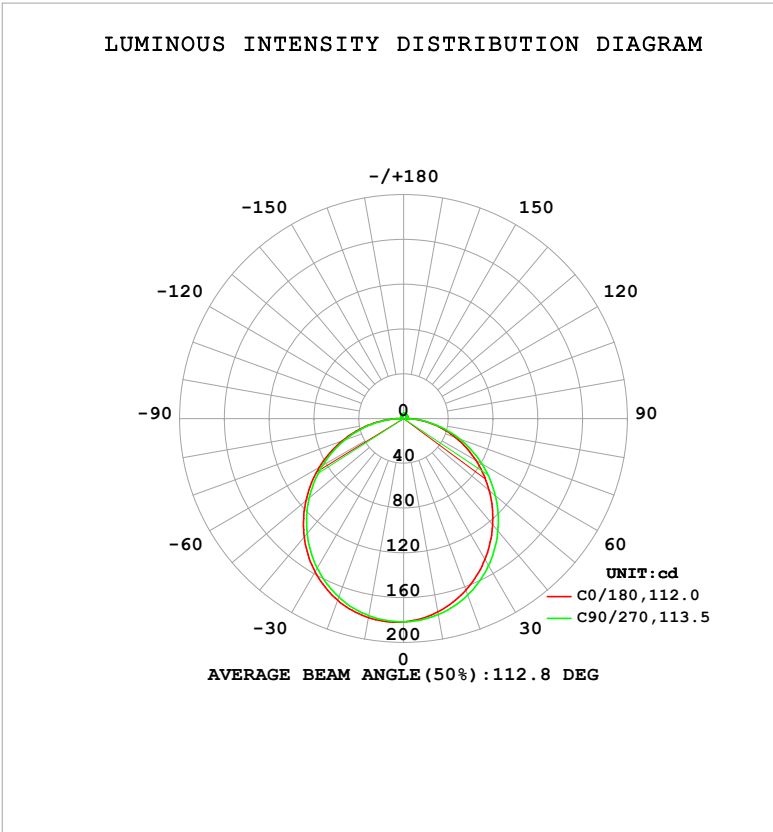


LUMINAIRE PHOTOMETRIC TEST REPORT

Test:U:24.00V I:0.4221A P:10.13W PF:1.000 Freq:0Hz Lamp Flux:553.163x1 lm		
NAME: SF08-24V-2835-120-2700-80	TYPE:	WEIGHT:
SPEC.:	DIM.: Length=1m	SERIAL No.:
MFR.:	SUR.:	Shielding Angle:

DATA OF LAMP		PHOTOMETRIC DATA				Eff: 54.60 lm/W
MODEL		Imax (cd)	182.0	S/MH(C0/180)	1.29	
NOMINAL POWER(W)		LOR(%)	100.0	S/MH(C90/270)	1.26	
RATED VOLTAGE(V)		TOTAL FLUX(lm)	553.16	η UP,DN(C0-180)	1.9,47.4	
NOMINAL FLUX(lm)	553.163	CIE CLASS	DIRECT	η UP,DN(C180-360)	1.8,48.9	
LAMPS INSIDE	1	η up (%)	3.7	CIBSE SHR NOM	1.25	
TEST VOLTAGE(V)		η down (%)	96.3	CIBSE SHR MAX	1.35	



C Range: 0 - 360DEG	γ Range: 0 - 180DEG
C Interval: 22.5DEG	γ Interval: 1.0DEG
Test Speed: HIGH	Test System:EVERFINE GO-2000B_V1 SYSTEM V2.00.488
Temperature:25.3℃	Humidity:65.0%
Operators:Cloud	Test Distance:6.360m [K=1.0000]
Test Date:2024-10-25	Remarks:

## ZONAL FLUX DIAGRAM

## ZONAL FLUX DIAGRAM:

$\gamma$	C0	C45	C90	C135	C180	C225	C270	C315	$\gamma$	$\Phi$ zone	$\Phi$ total	%lum, lamp
10	175.4	176.0	177.7	179.5	180.6	180.2	178.8	176.9	0- 10	17.17	17.17	3.1,3.1
20	162.9	164.2	167.6	170.9	172.6	172.5	169.6	165.9	10- 20	49.10	66.27	12,12
30	145.3	146.9	151.7	156.1	158.1	157.7	154.4	149.3	20- 30	74.20	140.5	25.4,25.4
40	123.8	125.6	131.1	135.9	138.2	137.8	134.2	128.4	30- 40	89.26	229.7	41.5,41.5
50	99.79	101.5	107.0	111.6	113.9	113.6	110.1	104.4	40- 50	92.69	322.4	58.3,58.3
60	74.57	76.01	80.67	84.54	86.84	86.60	83.53	78.67	50- 60	84.71	407.1	73.6,73.6
70	49.33	50.28	53.45	56.33	58.37	58.22	55.88	52.49	60- 70	67.12	474.2	85.7,85.7
80	24.72	25.05	26.41	28.06	29.77	29.71	28.28	26.71	70- 80	42.73	517.0	93.5,93.5
90	4.365	3.494	2.196	3.829	5.268	4.520	2.339	3.888	80- 90	15.73	532.7	96.3,96.3
100	2.515	2.514	2.490	2.473	2.294	2.552	2.488	2.192	90-100	2.748	535.5	96.8,96.8
110	2.889	2.874	2.819	2.846	2.622	2.869	2.829	3.070	100-110	2.816	538.3	97.3,97.3
120	3.243	3.111	3.108	3.193	2.942	3.175	3.288	3.411	110-120	3.004	541.3	97.9,97.9
130	3.557	3.351	3.391	3.517	3.247	3.481	3.591	3.691	120-130	2.990	544.3	98.4,98.4
140	3.836	3.628	3.663	3.823	3.572	3.785	3.886	3.905	130-140	2.804	547.1	98.9,98.9
150	4.101	3.888	4.086	4.115	3.877	4.093	4.169	4.159	140-150	2.448	549.5	99.3,99.3
160	4.357	4.344	4.394	4.410	4.164	4.365	4.452	4.396	150-160	1.943	551.5	99.7,99.7
170	4.349	4.566	4.637	4.621	4.257	4.590	4.666	4.610	160-170	1.263	552.7	99.9,99.9
180	4.432	4.693	4.761	4.731	4.429	4.693	4.764	4.743	170-180	0.4413	553.2	100,100
DEG	LUMINOUS INTENSITY:cd									UNIT:lm		

Conical surface Flux(90deg): 276.38 lm

%lum = 50.0%

%lamp = 50.0%

Conical surface Flux(130deg): 443.37 lm

%lum = 80.2%

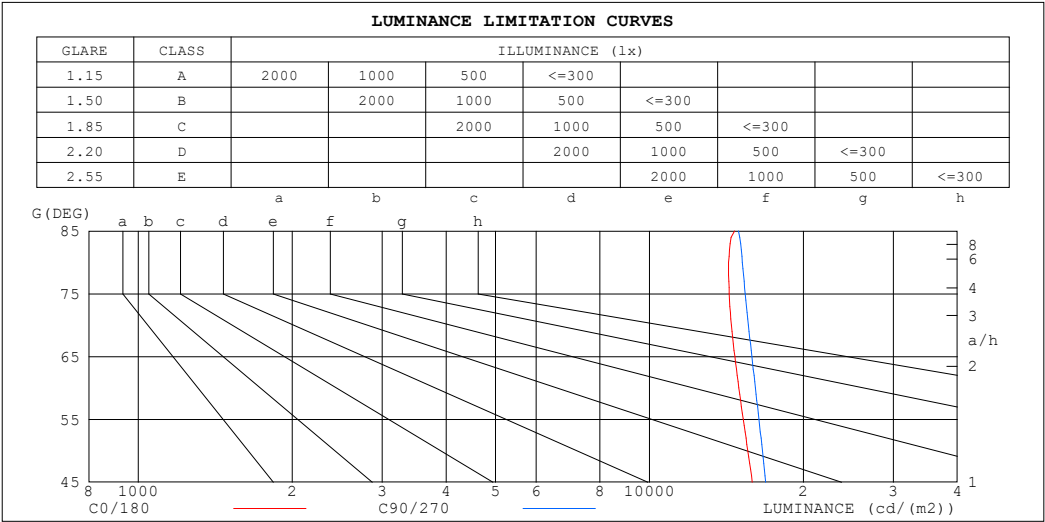
%lamp = 80.2%

C Range: 0 - 360DEG  
 C Interval: 22.5DEG  
 Test Speed: HIGH  
 Temperature:25.3℃  
 Operators:Cloud  
 Test Date:2024-10-25

$\gamma$  Range: 0 - 180DEG  
 $\gamma$  Interval: 1.0DEG  
 Test System:EVERFINE GO-2000B\_V1 SYSTEM V2.00.488  
 Humidity:65.0%  
 Test Distance:6.360m [K=1.0000]  
 Remarks:

LUMINANCE LIMITATION CURVES

Test:U:24.00V I:0.4221A P:10.13W PF:1.000 Freq:0Hz Lamp Flux:553.163x1 lm		
NAME: SF08-24V-2835-120-2700-80	TYPE:	WEIGHT:
SPEC.:	DIM.: Length=1m	SERIAL No.:
MFR.:	SUR.:	Shielding Angle:



LUMINANCE cd/(m2)		
G (DEG)	C0/180	C90/270
85	14663	14939
80	14277	15195
75	14313	15385
70	14464	15613
65	14688	15861
60	14956	16118
55	15251	16372
50	15569	16631
45	15887	16870

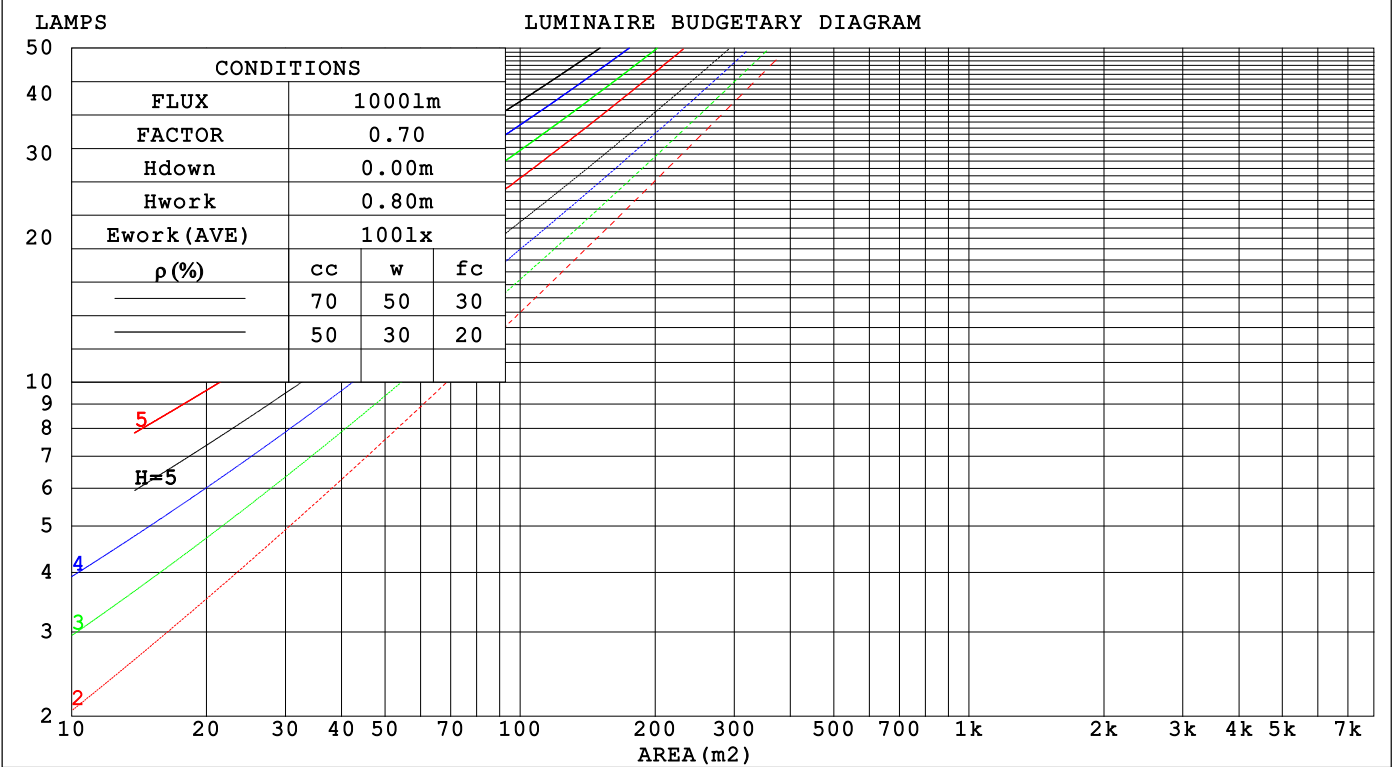
C Range: 0 - 360DEG  
C Interval: 22.5DEG  
Test Speed: HIGH  
Temperature:25.3℃  
Operators:Cloud  
Test Date:2024-10-25

γ Range: 0 - 180DEG  
γ Interval: 1.0DEG  
Test System:EVERFINE GO-2000B\_V1 SYSTEM V2.00.488  
Humidity:65.0%  
Test Distance:6.360m [K=1.0000]  
Remarks:

CU AND LUMINAIRE BUDGETARY ESTIMATE DIAGRAM

Test:U:24.00V I:0.4221A P:10.13W PF:1.000 Freq:0Hz		
Lamp Flux:553.163x1 lm		
NAME: SF08-24V-2835-120-2700-80	TYPE:	WEIGHT:
SPEC.:	DIM.: Length=1m	SERIAL No.:
MFR.:	SUR.:	Shielding Angle:

pcc	80%			70%			50%			30%			10%			0
ρw	50%	30%	10%	50%	30%	10%	50%	30%	10%	50%	30%	10%	50%	30%	10%	0
ρfc	20%			20%			20%			20%			20%			0
RCR	RCR:Room Cavity Ratio			Coefficients of Utilization(CU)												
0.0	1.18	1.18	1.18	1.15	1.15	1.15	1.09	1.09	1.09	1.04	1.04	1.04	.99	.99	.99	.96
1.0	1.02	.98	.94	.90	.96	.92	.95	.91	.88	.90	.87	.85	.86	.84	.82	.79
2.0	.89	.82	.76	.86	.80	.75	.82	.77	.72	.78	.74	.70	.75	.71	.68	.65
3.0	.78	.69	.63	.76	.68	.62	.72	.66	.60	.69	.63	.59	.66	.61	.57	.55
4.0	.69	.60	.53	.67	.59	.52	.64	.57	.51	.61	.55	.50	.59	.53	.49	.47
5.0	.61	.52	.45	.60	.51	.45	.57	.50	.44	.55	.48	.43	.53	.47	.42	.40
6.0	.55	.46	.40	.54	.45	.39	.52	.44	.39	.50	.43	.38	.48	.42	.37	.35
7.0	.50	.41	.35	.49	.41	.35	.47	.40	.34	.45	.39	.34	.44	.38	.33	.31
8.0	.46	.37	.31	.45	.36	.31	.43	.36	.30	.41	.35	.30	.40	.34	.30	.28
9.0	.42	.33	.28	.41	.33	.28	.40	.32	.27	.38	.32	.27	.37	.31	.27	.25
10.0	.38	.31	.25	.38	.30	.25	.37	.30	.25	.35	.29	.25	.34	.28	.24	.22



C Range: 0 - 360DEG  
C Interval: 22.5DEG  
Test Speed: HIGH  
Temperature:25.3℃  
Operators:Cloud  
Test Date:2024-10-25

γ Range: 0 - 180DEG  
γ Interval: 1.0DEG  
Test System:EVERFINE GO-2000B\_V1 SYSTEM V2.00.488  
Humidity:65.0%  
Test Distance:6.360m [K=1.0000]  
Remarks:

## WEC AND CCEC

Test:U:24.00V I:0.4221A P:10.13W PF:1.000 Freq:0Hz Lamp Flux:553.163x1 lm					
NAME: SF08-24V-2835-120-2700-80			TYPE:		WEIGHT:
SPEC.:			DIM.: Length=1m		SERIAL No.:
MFR.:			SUR.:		Shielding Angle:

pcc	80%			70%			50%			30%			10%			0														
pw	50%	30%	10%	50%	30%	10%	50%	30%	10%	50%	30%	10%	50%	30%	10%	0														
pfc	20%			20%			20%			20%			20%			0														
RCR	RCR:Room Cavity Ratio															Wall Exitance Coefficients(WEC)														
0.0																														
1.0	.324	.184	.058	.316	.180	.057	.300	.172	.055	.286	.165	.053	.273	.158	.051															
2.0	.300	.164	.050	.292	.161	.050	.279	.155	.048	.266	.149	.047	.254	.144	.045															
3.0	.275	.146	.044	.269	.144	.043	.256	.139	.042	.245	.134	.041	.235	.130	.040															
4.0	.252	.131	.039	.247	.129	.038	.236	.125	.037	.226	.121	.037	.216	.117	.036															
5.0	.233	.119	.034	.227	.117	.034	.218	.113	.033	.209	.110	.033	.200	.107	.032															
6.0	.215	.108	.031	.211	.106	.031	.202	.103	.030	.194	.101	.030	.186	.098	.029															
7.0	.200	.099	.028	.196	.097	.028	.188	.095	.027	.180	.092	.027	.173	.090	.026															
8.0	.186	.091	.026	.183	.090	.025	.175	.088	.025	.169	.086	.025	.163	.083	.024															
9.0	.174	.084	.024	.171	.083	.023	.165	.081	.023	.159	.079	.023	.153	.078	.022															
10.0	.164	.079	.022	.161	.078	.022	.155	.076	.021	.149	.074	.021	.144	.073	.021															

pcc	80%			70%			50%			30%			10%			0
pw	50%	30%	10%	50%	30%	10%	50%	30%	10%	50%	30%	10%	50%	30%	10%	0
pfc	20%			20%			20%			20%			20%			0
RCR	RCR:Room Cavity Ratio						Ceiling Cavity Exitance Coefficients (CCEC)									
0.0	.219	.219	.219	.187	.187	.187	.128	.128	.128	.073	.073	.073	.023	.023	.023	
1.0	.210	.184	.162	.179	.158	.139	.123	.109	.096	.071	.063	.056	.023	.020	.018	
2.0	.202	.160	.126	.173	.138	.109	.119	.096	.076	.068	.056	.044	.022	.018	.014	
3.0	.194	.143	.102	.167	.123	.089	.114	.086	.062	.066	.050	.037	.021	.016	.012	
4.0	.187	.130	.087	.160	.112	.075	.110	.078	.053	.064	.046	.031	.020	.015	.010	
5.0	.179	.120	.076	.154	.104	.066	.106	.072	.047	.061	.042	.028	.020	.014	.009	
6.0	.172	.111	.068	.148	.096	.059	.102	.068	.042	.059	.040	.025	.019	.013	.008	
7.0	.165	.105	.062	.142	.091	.054	.098	.064	.038	.057	.037	.023	.018	.012	.008	
8.0	.158	.099	.058	.136	.086	.050	.094	.060	.036	.055	.035	.021	.018	.012	.007	
9.0	.152	.094	.054	.131	.081	.047	.091	.057	.034	.053	.034	.020	.017	.011	.007	
10.0	.147	.090	.052	.126	.078	.045	.088	.055	.032	.051	.032	.019	.017	.011	.006	

C Range: 0 - 360DEG  
C Interval: 22.5DEG  
Test Speed: HIGH  
Temperature:25.3℃  
Operators:Cloud  
Test Date:2024-10-25

γ Range: 0 - 180DEG  
γ Interval: 1.0DEG  
Test System:EVERFINE GO-2000B\_V1 SYSTEM V2.00.488  
Humidity:65.0%  
Test Distance:6.360m [K=1.0000]  
Remarks:

UGR(Unified Glare Rating) Table

Test:U:24.00V I:0.4221A P:10.13W PF:1.000 Freq:0Hz Lamp Flux:553.163x1 lm											
NAME: SF08-24V-2835-120-2700-80					TYPE:			WEIGHT:			
SPEC.:					DIM.: Length=1m			SERIAL No.:			
MFR.:					SUR.:			Shielding Angle:			
ceiling/cavity		0.7	0.7	0.5	0.5	0.3	0.7	0.7	0.5	0.5	0.3
walls		0.5	0.3	0.5	0.3	0.3	0.5	0.3	0.5	0.3	0.3
working plane		0.2	0.2	0.2	0.2	0.2	0.2	0.2	0.2	0.2	0.2
Room dimensions		Viewed crosswise					Viewed endwise				
x = 2H y = 2H		23.9	25.4	24.2	25.7	26.0	24.2	25.7	24.5	26.0	26.3
3H		25.6	26.9	25.9	27.2	27.5	25.9	27.3	26.3	27.6	27.9
4H		26.3	27.6	26.6	27.9	28.2	26.7	28.0	27.0	28.3	28.6
6H		26.9	28.1	27.3	28.5	28.8	27.3	28.5	27.6	28.8	29.2
8H		27.1	28.3	27.5	28.7	29.0	27.5	28.7	27.9	29.0	29.4
12H		27.3	28.4	27.7	28.8	29.2	27.7	28.8	28.1	29.2	29.5
4H 2H		24.6	25.9	24.9	26.2	26.5	24.8	26.1	25.2	26.4	26.8
3H		26.4	27.5	26.8	27.9	28.3	26.7	27.8	27.1	28.2	28.6
4H		27.3	28.3	27.7	28.7	29.1	27.6	28.6	28.0	29.0	29.4
6H		28.0	28.9	28.5	29.4	29.8	28.3	29.3	28.8	29.7	30.1
8H		28.3	29.2	28.8	29.6	30.1	28.6	29.5	29.1	29.9	30.4
12H		28.5	29.3	29.0	29.8	30.3	28.9	29.7	29.3	30.1	30.6
8H 4H		27.6	28.5	28.1	28.9	29.4	27.9	28.7	28.3	29.2	29.6
6H		28.5	29.2	29.0	29.7	30.2	28.8	29.5	29.3	30.0	30.5
8H		28.9	29.6	29.4	30.1	30.6	29.2	29.9	29.7	30.3	30.9
12H		29.3	29.8	29.8	30.3	30.9	29.6	30.1	30.1	30.6	31.2
12H 4H		27.6	28.4	28.1	28.9	29.4	27.9	28.7	28.4	29.1	29.6
6H		28.6	29.3	29.1	29.8	30.3	28.9	29.5	29.4	30.0	30.6
8H		29.1	29.6	29.6	30.1	30.7	29.3	29.9	29.9	30.4	31.0
Variations with the observer position at spacings(CIE Pub.117):											
S = 1.0H		+ 0.1 / - 0.2					+ 0.1 / - 0.2				
1.5H		+ 0.2 / - 0.3					+ 0.1 / - 0.3				
2.0H		+ 0.1 / - 0.3					+ 0.1 / - 0.2				

CIE Pub.117, 553.2 lm Total Lamp Luminous Flux Correct (8log(F/F0) = -2.1)  
Area: 0.01 m2

C Range: 0 - 360DEG  
C Interval: 22.5DEG  
Test Speed: HIGH  
Temperature:25.3℃  
Operators:Cloud  
Test Date:2024-10-25

γ Range: 0 - 180DEG  
γ Interval: 1.0DEG  
Test System:EVERFINE GO-2000B\_V1 SYSTEM V2.00.488  
Humidity:65.0%  
Test Distance:6.360m [K=1.0000]  
Remarks:

## UTILIZATION FACTORS TABLE

Test:U:24.00V I:0.4221A P:10.13W PF:1.000 Freq:0Hz Lamp Flux:553.163x1 lm		
NAME: SF08-24V-2835-120-2700-80	TYPE:	WEIGHT:
SPEC.:	DIM.: Length=1m	SERIAL No.:
MFR.:	SUR.:	Shielding Angle:

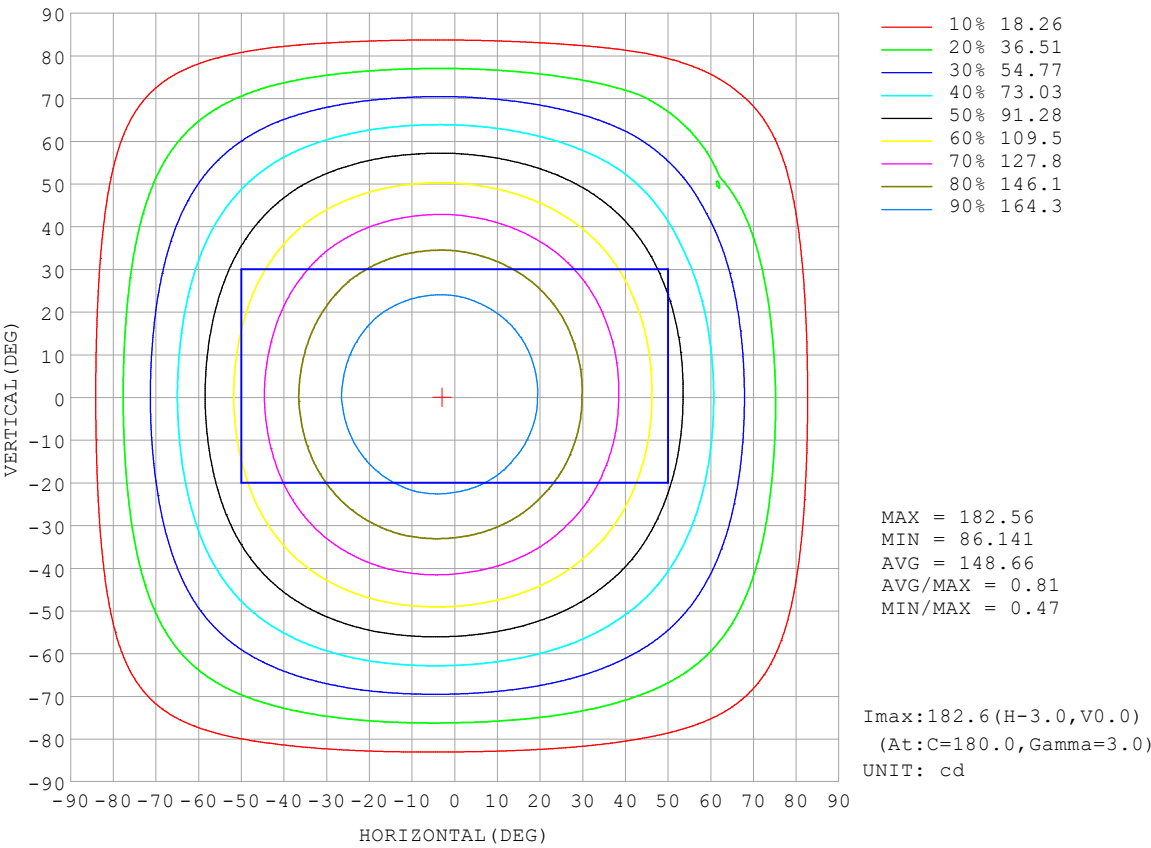
REFLECTANCE										
Ceiling	0.8	0.8	0.8	0.7	0.7	0.7	0.5	0.5	0.5	0
Walls	0.7	0.5	0.3	0.7	0.5	0.3	0.7	0.5	0.3	0
Working plane	0.2	0.2	0.2	0.2	0.2	0.2	0.2	0.2	0.2	0
ROOM INDEX	UTILIZATION FACTORS (PERCENT) $k(RI) \times RCR = 5$									
$k = 0.60$	56	44	37	55	44	37	53	43	37	30
0.80	66	54	46	64	53	46	62	52	45	38
1.00	74	62	55	72	62	55	70	63	54	46
1.25	81	70	63	79	69	62	76	67	61	53
1.50	86	76	68	84	75	68	81	72	66	58
2.00	93	84	77	91	82	76	87	80	74	66
2.50	97	89	82	95	87	81	90	84	79	70
3.00	100	93	87	98	91	86	93	88	83	74
4.00	104	98	93	102	96	92	97	92	89	78
5.00	107	102	97	104	100	96	99	95	92	82
ROOM INDEX	UF (total)									Direct
According to DIN EN 13032-2 2004			Suspended					SHRNOM = 1.25		

C Range: 0 - 360DEG  
 C Interval: 22.5DEG  
 Test Speed: HIGH  
 Temperature: 25.3°C  
 Operators: Cloud  
 Test Date: 2024-10-25

γ Range: 0 - 180DEG  
 γ Interval: 1.0DEG  
 Test System: EVERFINE GO-2000B\_V1 SYSTEM V2.00.488  
 Humidity: 65.0%  
 Test Distance: 6.360m [K=1.0000]  
 Remarks:

ISOCANDELA DIAGRAM

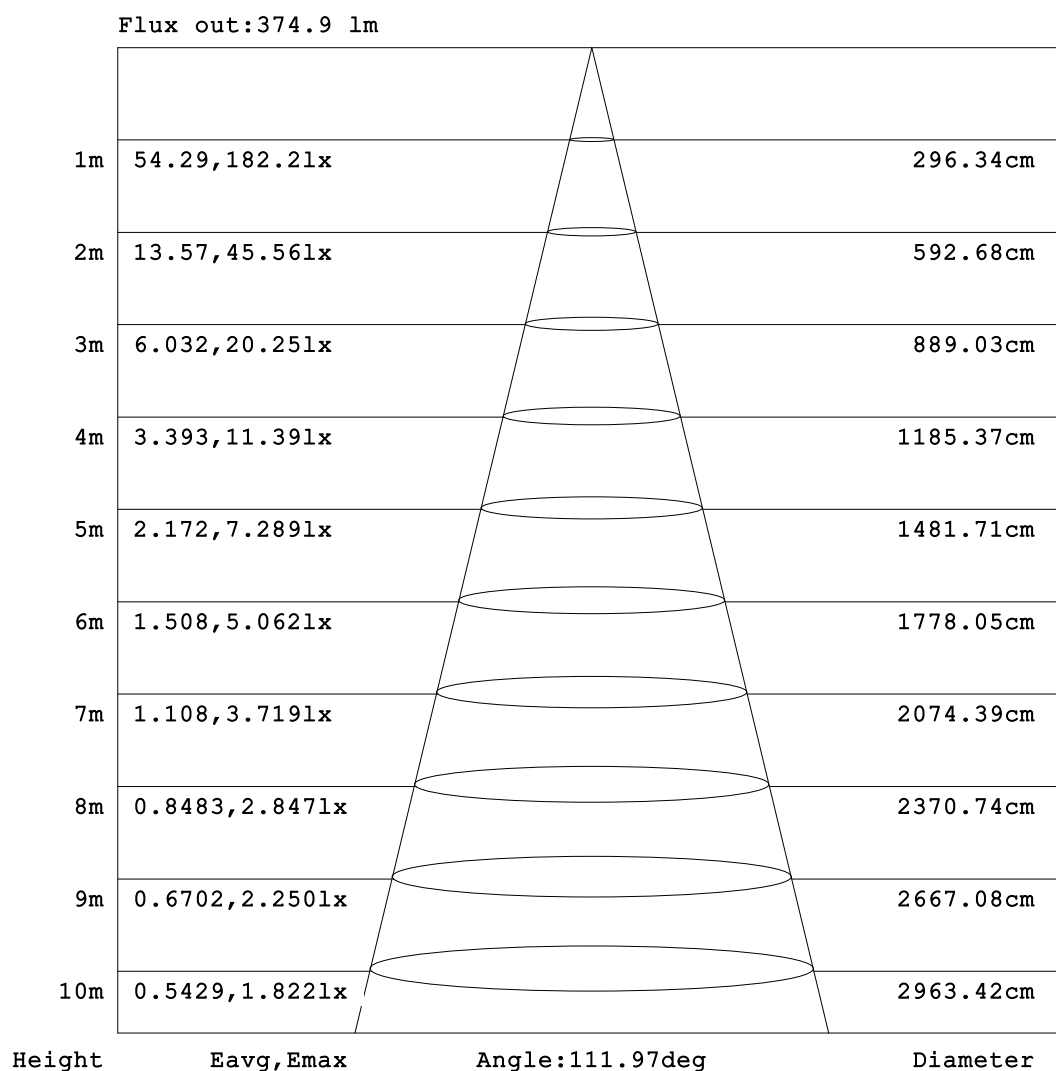
Test:U:24.00V I:0.4221A P:10.13W PF:1.000 Freq:0Hz Lamp Flux:553.163x1 lm		
NAME: SF08-24V-2835-120-2700-80	TYPE:	WEIGHT:
SPEC.:	DIM.: Length=1m	SERIAL No.:
MFR.:	SUR.:	Shielding Angle:



C Range: 0 - 360DEG	γ Range: 0 - 180DEG
C Interval: 22.5DEG	γ Interval: 1.0DEG
Test Speed: HIGH	Test System:EVERFINE GO-2000B_V1 SYSTEM V2.00.488
Temperature:25.3℃	Humidity:65.0%
Operators:Cloud	Test Distance:6.360m [K=1.0000]
Test Date:2024-10-25	Remarks:

## AAI Figure

Test:U:24.00V I:0.4221A P:10.13W PF:1.000 Freq:0Hz Lamp Flux:553.163lx 1m		
NAME: SF08-24V-2835-120-2700-80	TYPE:	WEIGHT:
SPEC.:	DIM.: Length=1m	SERIAL No.:
MFR.:	SUR.:	Shielding Angle:



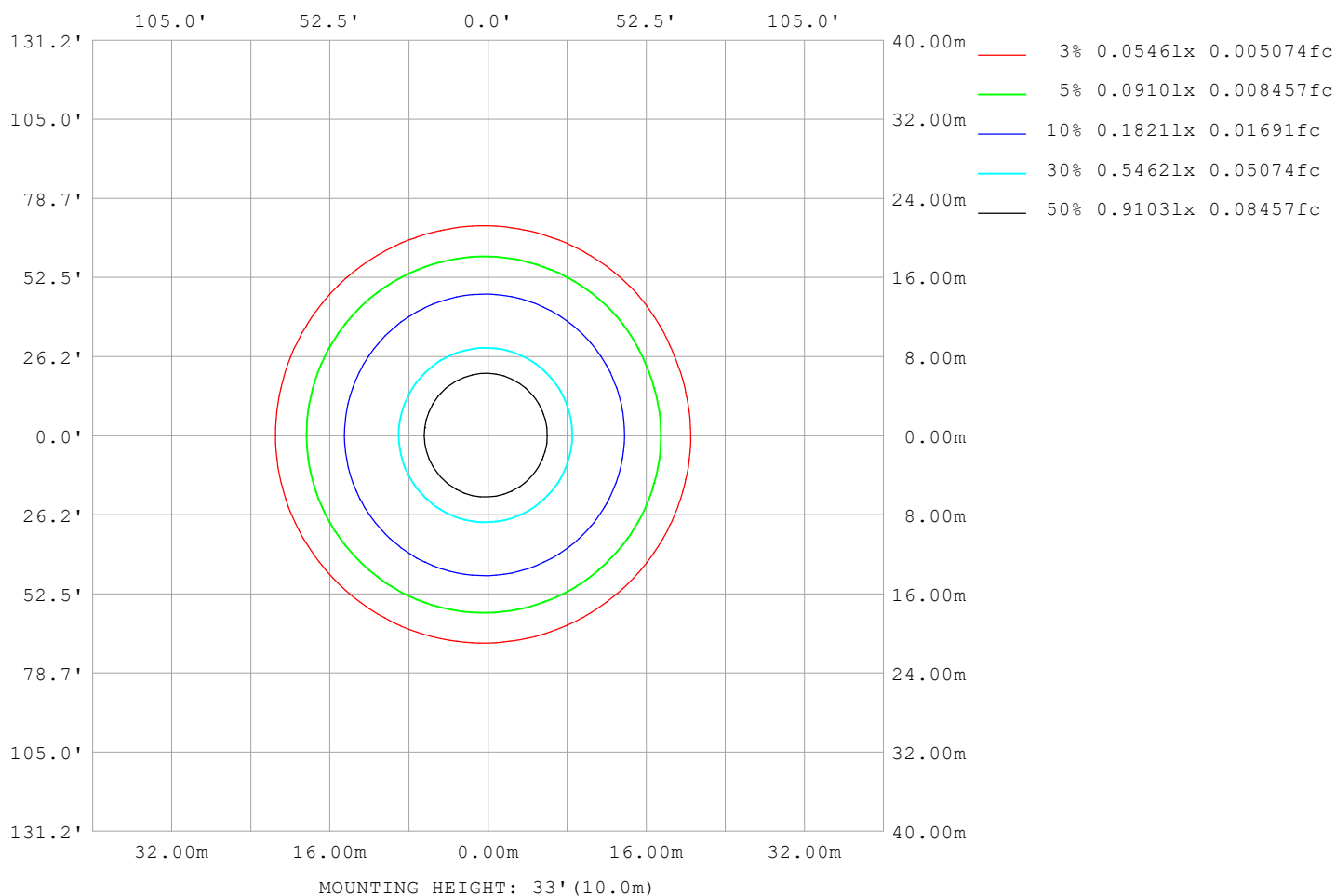
Note:The Curves indicate the illuminated area and the average illumination when the luminaire is at different distance.

C Range: 0 - 360DEG  
C Interval: 22.5DEG  
Test Speed: HIGH  
Temperature:25.3℃  
Operators:Cloud  
Test Date:2024-10-25

γ Range: 0 - 180DEG  
γ Interval: 1.0DEG  
Test System:EVERFINE GO-2000B\_V1 SYSTEM V2.00.488  
Humidity:65.0%  
Test Distance:6.360m [K=1.0000]  
Remarks:

## ISOLUX DIAGRAM

Test:U:24.00V I:0.4221A P:10.13W PF:1.000 Freq:0Hz Lamp Flux:553.163x1 lm		
NAME: SF08-24V-2835-120-2700-80	TYPE:	WEIGHT:
SPEC.:	DIM.: Length=1m	SERIAL No.:
MFR.:	SUR.:	Shielding Angle:



C Range: 0 - 360DEG  
C Interval: 22.5DEG  
Test Speed: HIGH  
Temperature: 25.3°C  
Operators: Cloud  
Test Date: 2024-10-25

γ Range: 0 - 180DEG  
γ Interval: 1.0DEG  
Test System: EVERFINE GO-2000B\_V1 SYSTEM V2.00.488  
Humidity: 65.0%  
Test Distance: 6.360m [K=1.0000]  
Remarks:

## LED Avg.L Report

Test:U:24.00V I:0.4221A P:10.13W PF:1.000 Freq:0Hz Lamp Flux:553.163x1 lm		
NAME: SF08-24V-2835-120-2700-80	TYPE:	WEIGHT:
SPEC.:	DIM.: Length=1m	SERIAL No.:
MFR.:	SUR.:	Shielding Angle:

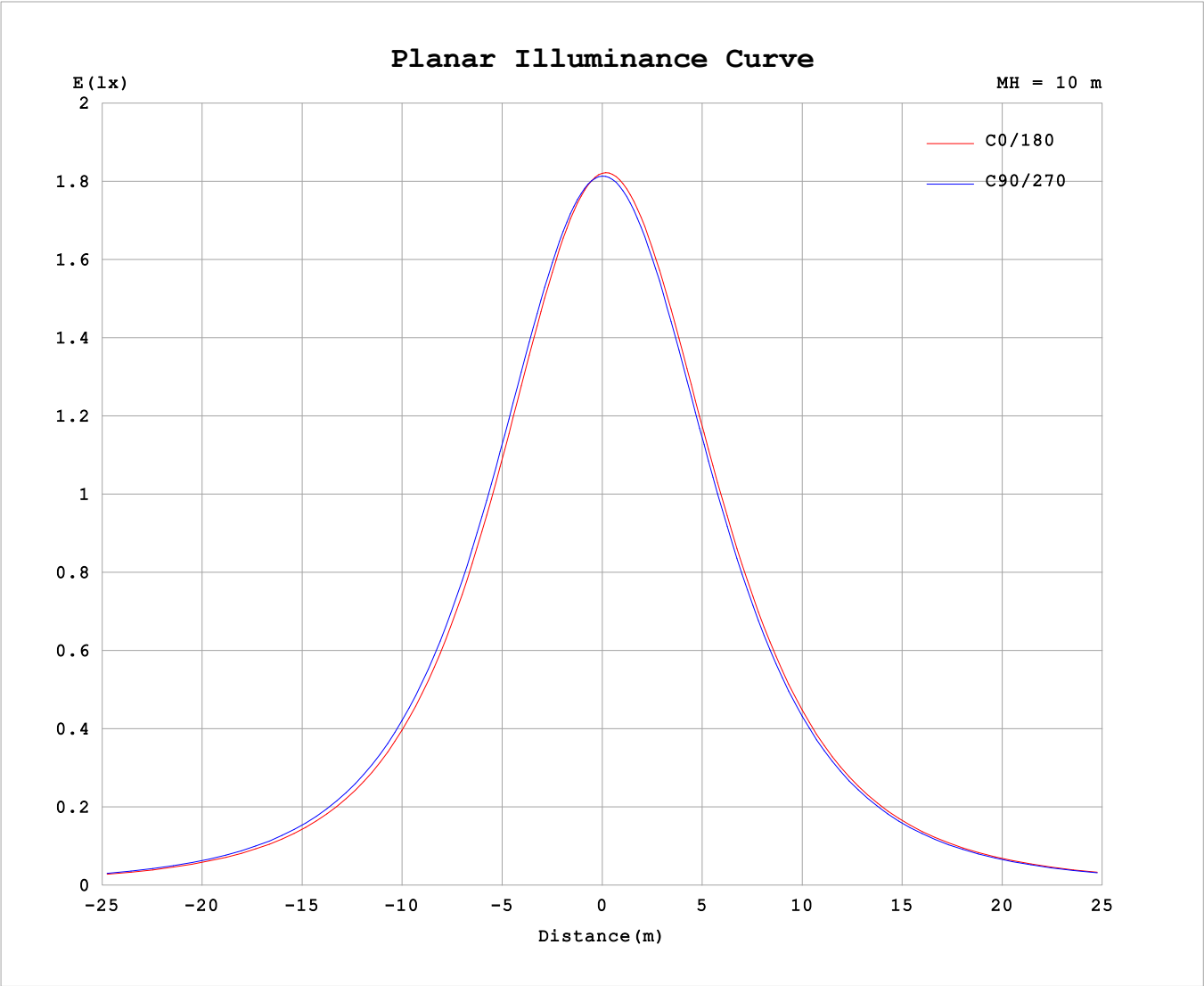
AvgL	cd/m2
L_0~180 (65) av	15926
L_0~180 (75) av	15644
L_0~180 (85) av	16358
L_90~270 (65) av	16194
L_90~270 (75) av	15819
L_90~270 (85) av	15865
L_45 (65) av	16075
L_45 (75) av	15763
L_45 (85) av	16155

Standard: GB/T 29293-2012

C Range: 0 - 360DEG  
C Interval: 22.5DEG  
Test Speed: HIGH  
Temperature:25.3℃  
Operators:Cloud  
Test Date:2024-10-25

γ Range: 0 - 180DEG  
γ Interval: 1.0DEG  
Test System:EVERFINE GO-2000B\_V1 SYSTEM V2.00.488  
Humidity:65.0%  
Test Distance:6.360m [K=1.0000]  
Remarks:

Planar Illuminance Curve



C Range: 0 - 360DEG	γ Range: 0 - 180DEG
C Interval: 22.5DEG	γ Interval: 1.0DEG
Test Speed: HIGH	Test System:EVERFINE GO-2000B_V1 SYSTEM V2.00.488
Temperature:25.3℃	Humidity:65.0%
Operators:Cloud	Test Distance:6.360m [K=1.0000]
Test Date:2024-10-25	Remarks:

## LUMINOUS DISTRIBUTION INTENSITY DATA

Test:U:24.00V I:0.4221A P:10.13W PF:1.000 Freq:0Hz Lamp Flux:553.163x1 lm																	
NAME: SF08-24V-2835-120-2700-80									TYPE:						WEIGHT:		
SPEC.:									DIM.: Length=1m						SERIAL No.:		
MFR.:									SUR.:						Shielding Angle:		

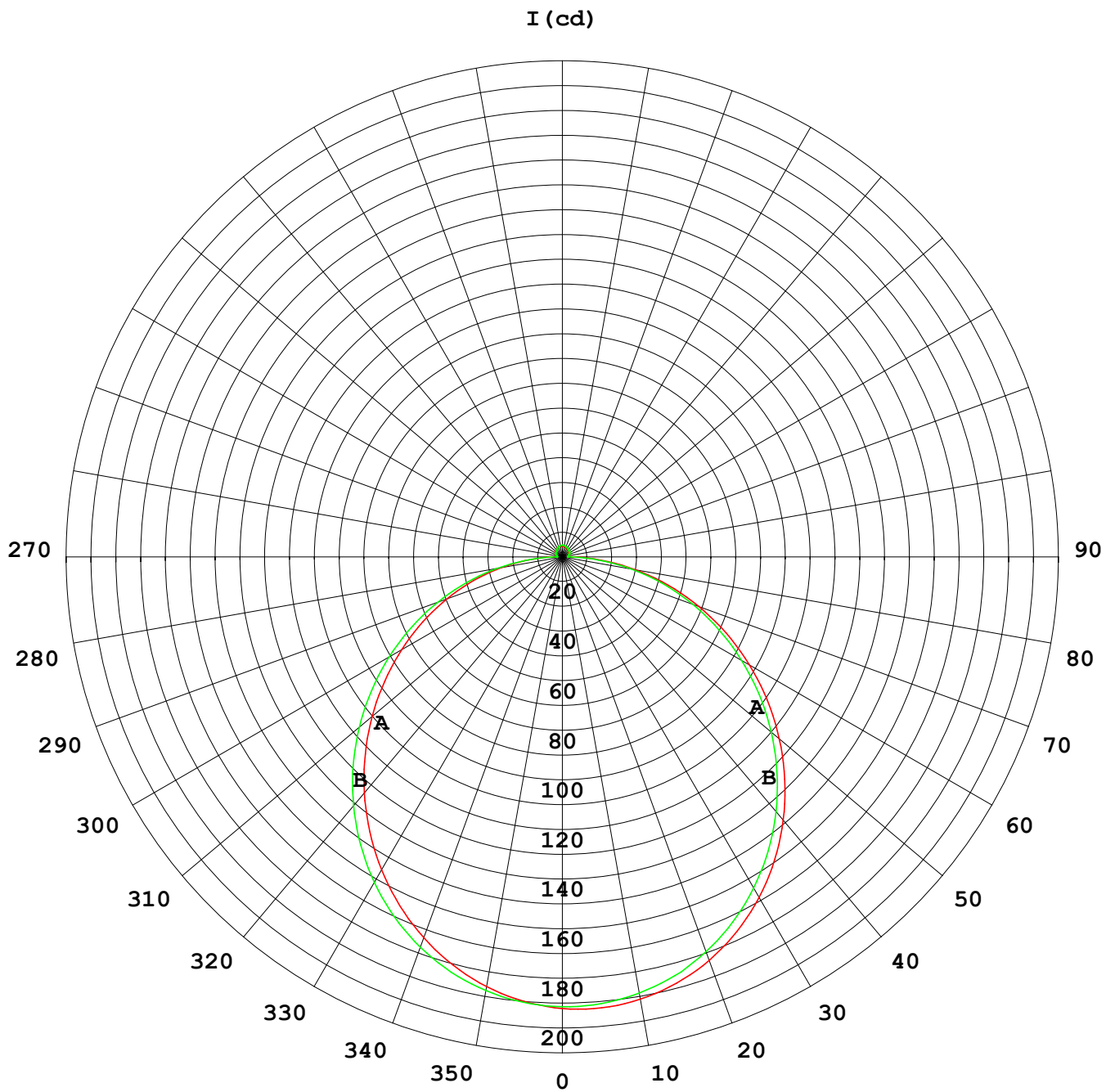
Table--1

UNIT: cd

C (DEG) γ (DEG)	0	22.5	45	67.5	90	112.5	135	157.5	180	202.5	225	247.5	270	292.5	315	337.5			
0	182	182	182	182	182	182	182	182	182	182	182	182	182	182	182	182			
5	179	179	180	180	180	181	181	182	182	182	182	181	181	180	180	180			
10	175	176	176	177	178	179	180	180	181	180	180	180	179	178	177	176			
15	170	170	171	172	173	175	176	177	177	177	177	176	175	173	172	171			
20	163	163	164	166	168	170	171	172	173	172	172	171	170	168	166	164			
25	155	155	156	158	160	163	164	165	166	166	166	164	163	160	158	156			
30	145	146	147	149	152	154	156	157	158	158	158	156	154	152	149	147			
35	135	135	137	139	142	145	147	148	149	149	148	147	145	142	139	137			
40	124	124	126	128	131	134	136	137	138	138	138	136	134	131	128	126			
45	112	112	114	117	119	122	124	126	126	126	126	125	122	120	117	114			
50	99.8	100	101	104	107	110	112	113	114	114	114	112	110	107	104	102			
55	87.2	87.5	88.8	91.4	94.0	96.6	98.3	99.7	101	101	100	98.9	97.0	94.3	91.6	89.1			
60	74.6	74.8	76.0	78.3	80.7	83.0	84.5	86.0	86.8	86.8	86.6	85.2	83.5	81.0	78.7	74.9			
65	61.9	62.1	63.1	65.1	67.1	69.2	70.5	72.0	72.7	72.7	72.5	71.2	69.8	67.6	65.6	62.0			
70	49.3	49.5	50.3	51.9	53.5	55.2	56.3	57.7	58.4	58.4	58.2	57.1	55.9	54.1	52.5	47.0			
75	36.9	37.1	37.6	38.8	39.9	41.3	42.2	43.3	44.0	44.0	43.9	43.0	42.0	40.7	39.5	33.0			
80	24.7	24.8	25.0	25.8	26.4	27.4	28.1	29.1	29.8	29.8	29.7	29.0	28.3	27.4	26.7	24.4			
85	12.7	12.7	12.6	12.9	13.0	13.7	14.1	15.1	15.8	15.7	15.6	15.0	14.6	14.0	14.0	12.9			
90	4.36	4.17	3.49	2.71	2.20	2.79	3.83	4.94	5.27	5.11	4.52	3.30	2.34	2.83	3.89	4.44			
95	2.41	2.38	2.35	2.29	2.31	2.33	2.31	2.49	2.16	2.27	2.41	2.37	2.31	2.00	2.08	2.44			
100	2.51	2.52	2.51	2.47	2.49	2.51	2.47	2.64	2.29	2.38	2.55	2.51	2.49	2.07	2.19	2.52			
105	2.70	2.71	2.69	2.67	2.66	2.69	2.66	2.74	2.46	2.54	2.70	2.68	2.70	2.56	2.90	2.68			
110	2.89	2.89	2.87	2.87	2.82	2.87	2.85	2.87	2.62	2.70	2.87	2.86	2.83	3.06	3.07	2.85			
115	3.08	3.07	3.04	2.97	2.96	3.05	3.03	3.05	2.79	2.86	3.03	3.04	3.11	3.21	3.23	3.01			
120	3.24	3.24	3.11	3.10	3.11	3.21	3.19	3.22	2.94	3.01	3.18	3.20	3.29	3.33	3.41	3.16			
125	3.41	3.41	3.20	3.26	3.24	3.36	3.36	3.39	3.10	3.18	3.33	3.37	3.44	3.46	3.59	3.31			
130	3.56	3.56	3.35	3.39	3.39	3.51	3.52	3.54	3.25	3.33	3.48	3.53	3.59	3.59	3.69	3.47			
135	3.70	3.69	3.49	3.53	3.53	3.67	3.67	3.69	3.41	3.49	3.63	3.68	3.74	3.73	3.79	3.61			
140	3.84	3.64	3.63	3.67	3.66	3.83	3.82	3.84	3.57	3.65	3.78	3.83	3.89	3.87	3.90	3.76			
145	3.97	3.77	3.76	3.81	3.80	3.99	3.97	3.99	3.72	3.79	3.93	3.97	4.03	4.02	4.03	3.91			
150	4.10	3.90	3.89	3.95	4.09	4.14	4.12	4.13	3.88	3.94	4.09	4.13	4.17	4.16	4.16	4.05			
155	4.23	4.03	4.02	4.25	4.25	4.29	4.27	4.27	4.03	4.09	4.24	4.28	4.33	4.29	4.28	4.20			
160	4.36	4.16	4.34	4.39	4.39	4.44	4.41	4.41	4.16	4.24	4.36	4.41	4.45	4.41	4.40	4.35			
165	4.47	4.27	4.47	4.52	4.52	4.56	4.53	4.52	4.24	4.39	4.49	4.53	4.57	4.53	4.51	4.49			
170	4.35	4.43	4.57	4.63	4.64	4.67	4.62	4.62	4.26	4.51	4.59	4.62	4.67	4.62	4.61	4.62			
175	4.40	4.64	4.65	4.72	4.71	4.75	4.69	4.68	4.37	4.59	4.67	4.69	4.74	4.70	4.69	4.71			
180	4.43	4.66	4.69	4.74	4.76	4.77	4.73	4.71	4.43	4.65	4.69	4.74	4.76	4.75	4.74	4.79			

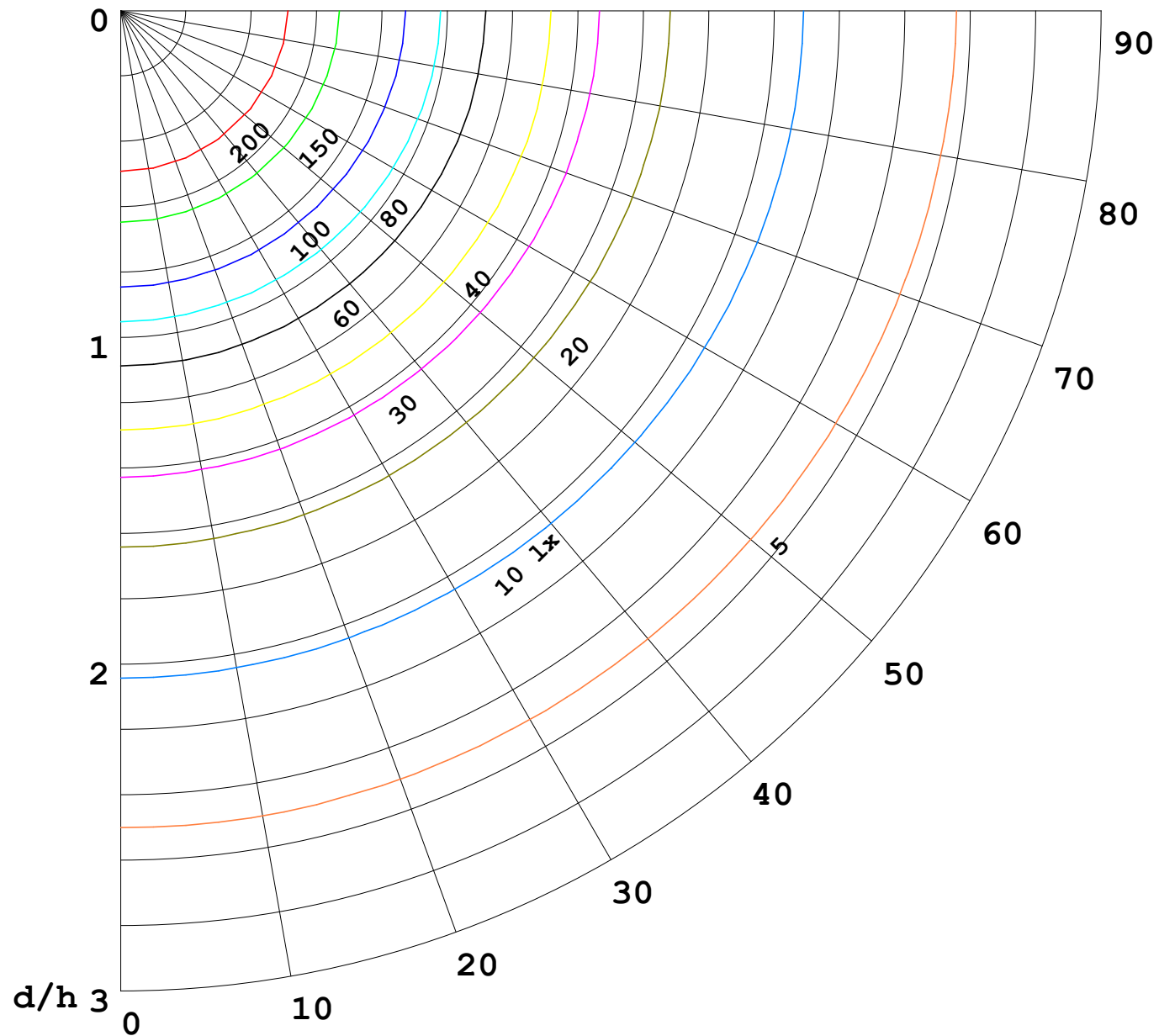
C Range: 0 - 360DEG  
C Interval: 22.5DEG  
Test Speed: HIGH  
Temperature:25.3℃  
Operators:Cloud  
Test Date:2024-10-25

γ Range: 0 - 180DEG  
γ Interval: 1.0DEG  
Test System:EVERFINE GO-2000B\_V1 SYSTEM V2.00.488  
Humidity:65.0%  
Test Distance:6.360m [K=1.0000]  
Remarks:



1000 lm

$\kappa = 1$



F = 1000 lm  
 K = 0.7  
 Hcc = 0.8 m  
 Hfc = 0.0 m  
 Eave = 100 lx

	Pcc	Pw	Pfc
—————	70	50	30
—————	50	30	20

