

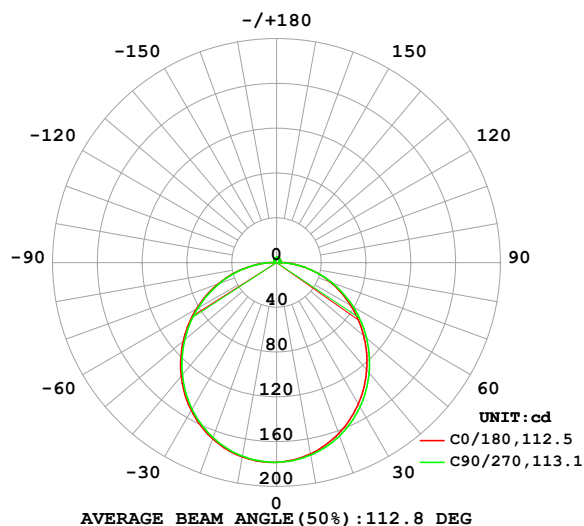
## LUMINAIRE PHOTOMETRIC TEST REPORT

Test:U:24.00V I:0.4246A P:10.19W PF:1.000 Freq:0Hz  
Lamp Flux:544.045x1 lm

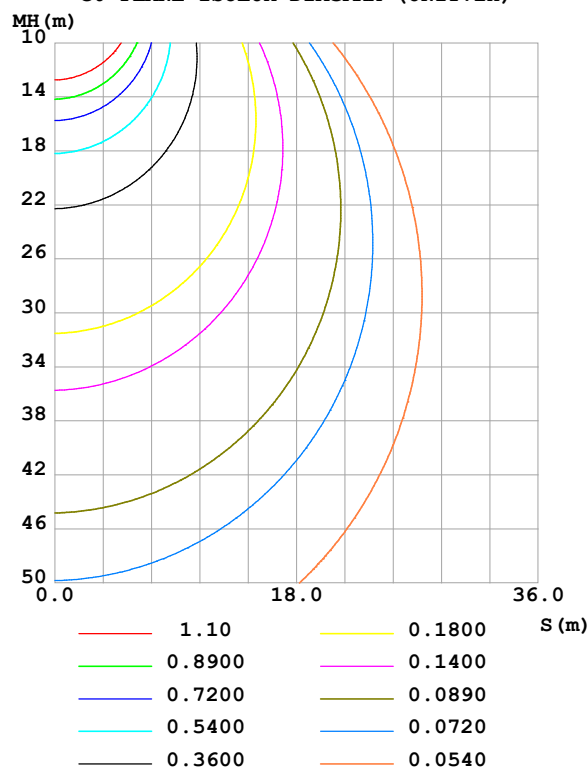
NAME: SF08-24V-2835-120-2200-80	TYPE:	WEIGHT:
SPEC.:	DIM.: Length=1m	SERIAL No.:
MFR.:	SUR.:	Shielding Angle:

DATA OF LAMP		PHOTOMETRIC DATA				Eff: 53.39 lm/W
MODEL		I <sub>max</sub> (cd)	178.5	S/MH(C0/180)	1.27	
NOMINAL POWER(W)		LOR(%)	100.0	S/MH(C90/270)	1.26	
RATED VOLTAGE(V)		TOTAL FLUX(lm)	544.05	η UP,DN(C0-180)	1.9,47.7	
NOMINAL FLUX(lm)	544.045	CIE CLASS	DIRECT	η UP,DN(C180-360)	1.8,48.7	
LAMPS INSIDE	1	η up (%)	3.6	CIBSE SHR NOM	1.25	
TEST VOLTAGE(V)		η down (%)	96.4	CIBSE SHR MAX	1.35	

LUMINOUS INTENSITY DISTRIBUTION DIAGRAM



C0 PLANE ISOLUX DIAGRAM (UNIT:lx)



C Range: 0 - 360DEG  
C Interval: 22.5DEG  
Test Speed: HIGH  
Temperature:25.3℃  
Operators:Cloud  
Test Date:2024-10-31

γ Range: 0 - 180DEG  
γ Interval: 1.0DEG  
Test System:EVERFINE GO-2000B\_V1 SYSTEM V2.00.488  
Humidity:65.0%  
Test Distance:6.360m [K=1.0000]  
Remarks:

## ZONAL FLUX DIAGRAM

## ZONAL FLUX DIAGRAM:

$\gamma$	C0	C45	C90	C135	C180	C225	C270	C315	$\gamma$	$\Phi$ zone	$\Phi$ total	%lum, lamp
10	173.6	173.8	174.6	175.6	176.2	176.2	175.6	174.6	0- 10	16.86	16.86	3.1,3.1
20	162.4	162.9	164.6	166.5	167.4	167.5	166.3	164.3	10- 20	48.22	65.09	12,12
30	145.9	146.5	148.9	151.4	152.6	152.6	151.1	148.5	20- 30	72.87	138.0	25.4,25.4
40	125.3	125.9	128.6	131.3	132.6	132.7	131.0	128.1	30- 40	87.63	225.6	41.5,41.5
50	101.6	102.3	104.9	107.5	108.8	108.8	107.1	104.4	40- 50	90.96	316.5	58.2,58.2
60	76.49	76.94	79.10	81.34	82.68	82.58	81.05	78.86	50- 60	83.10	399.6	73.5,73.5
70	51.13	51.25	52.49	54.21	55.51	55.35	54.11	52.78	60- 70	65.97	465.6	85.6,85.6
80	26.30	25.93	26.12	27.21	28.41	28.23	27.45	27.11	70- 80	42.40	508.0	93.4,93.4
90	6.866	5.178	2.189	5.235	7.063	5.584	2.364	5.528	80- 90	16.29	524.3	96.4,96.4
100	2.513	2.464	2.443	2.401	2.153	2.159	2.132	2.384	90-100	3.000	527.3	96.9,96.9
110	2.872	2.767	2.770	2.771	2.476	2.497	2.473	2.659	100-110	2.638	529.9	97.4,97.4
120	3.212	3.036	3.050	3.115	2.790	2.826	2.698	2.864	110-120	2.781	532.7	97.9,97.9
130	3.520	3.281	3.324	3.430	3.115	3.175	3.051	3.220	120-130	2.779	535.5	98.4,98.4
140	3.779	3.547	3.587	3.733	3.437	3.524	3.562	3.633	130-140	2.655	538.1	98.9,98.9
150	3.975	3.804	4.008	4.025	3.765	3.874	3.923	3.936	140-150	2.352	540.5	99.3,99.3
160	4.274	4.265	4.315	4.317	4.079	4.208	4.264	4.237	150-160	1.879	542.4	99.7,99.7
170	4.275	4.488	4.549	4.537	4.209	4.488	4.550	4.497	160-170	1.232	543.6	99.9,99.9
180	4.364	4.609	4.671	4.647	4.364	4.612	4.674	4.655	170-180	0.4325	544.0	100,100
DEG	LUMINOUS INTENSITY:cd									UNIT:lm		

Conical surface Flux(90deg): 271.37 lm

%lum = 49.9%

%lamp = 49.9%

Conical surface Flux(130deg): 435.24 lm

%lum = 80.0%

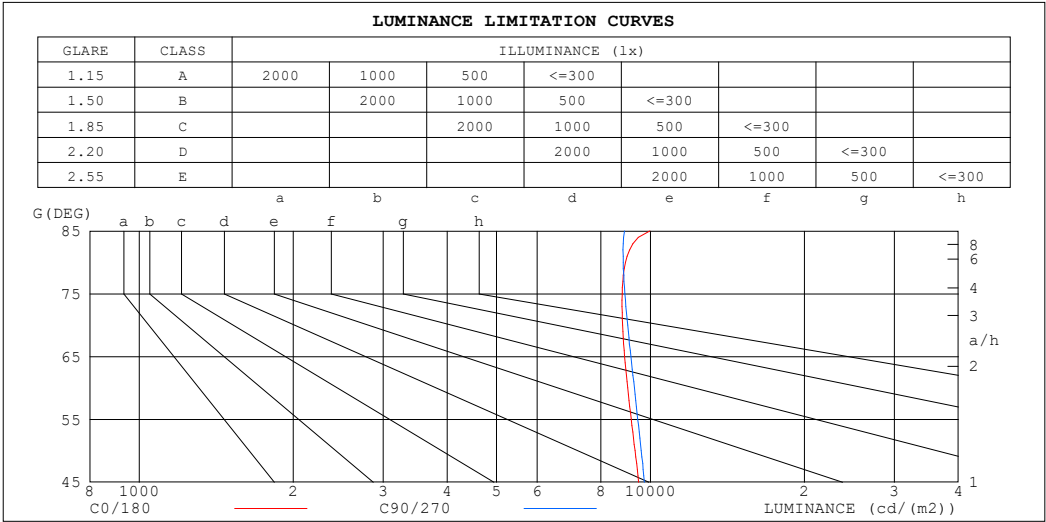
%lamp = 80.0%

C Range: 0 - 360DEG  
 C Interval: 22.5DEG  
 Test Speed: HIGH  
 Temperature:25.3℃  
 Operators:Cloud  
 Test Date:2024-10-31

$\gamma$  Range: 0 - 180DEG  
 $\gamma$  Interval: 1.0DEG  
 Test System:EVERFINE GO-2000B\_V1 SYSTEM V2.00.488  
 Humidity:65.0%  
 Test Distance:6.360m [K=1.0000]  
 Remarks:

LUMINANCE LIMITATION CURVES

Test:U:24.00V I:0.4246A P:10.19W PF:1.000 Freq:0Hz Lamp Flux:544.045x1 lm		
NAME: SF08-24V-2835-120-2200-80	TYPE:	WEIGHT:
SPEC.:	DIM.: Length=1m	SERIAL No.:
MFR.:	SUR.:	Shielding Angle:



LUMINANCE cd/(m2)		
G (DEG)	C0/180	C90/270
85	9977	8892
80	8934	8841
75	8803	8912
70	8817	9020
65	8903	9154
60	9023	9298
55	9168	9444
50	9325	9593
45	9484	9733

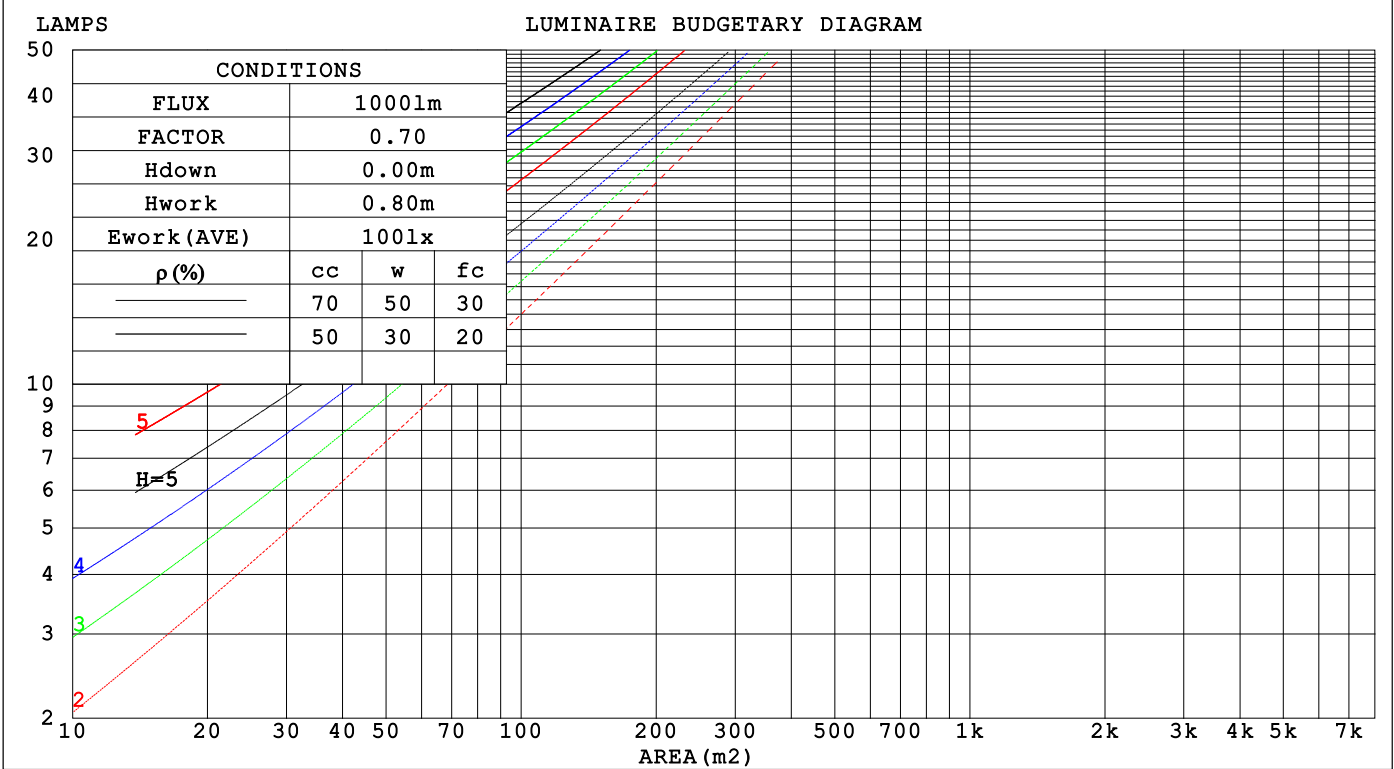
C Range: 0 - 360DEG  
C Interval: 22.5DEG  
Test Speed: HIGH  
Temperature:25.3℃  
Operators:Cloud  
Test Date:2024-10-31

γ Range: 0 - 180DEG  
γ Interval: 1.0DEG  
Test System:EVERFINE GO-2000B\_V1 SYSTEM V2.00.488  
Humidity:65.0%  
Test Distance:6.360m [K=1.0000]  
Remarks:

CU AND LUMINAIRE BUDGETARY ESTIMATE DIAGRAM

Test:U:24.00V I:0.4246A P:10.19W PF:1.000 Freq:0Hz		
Lamp Flux:544.045x1 lm		
NAME: SF08-24V-2835-120-2200-80	TYPE:	WEIGHT:
SPEC.:	DIM.: Length=1m	SERIAL No.:
MFR.:	SUR.:	Shielding Angle:

pcc	80%			70%			50%			30%			10%			0
pw	50%	30%	10%	50%	30%	10%	50%	30%	10%	50%	30%	10%	50%	30%	10%	0
pfc	20%			20%			20%			20%			20%			0
RCR	RCR:Room Cavity Ratio                      Coefficients of Utilization(CU)															
0.0	1.18	1.18	1.18	1.15	1.15	1.15	1.09	1.09	1.09	1.04	1.04	1.04	.99	.99	.99	.96
1.0	1.02	.98	.94	.00	.95	.92	.95	.91	.88	.90	.87	.85	.86	.84	.82	.79
2.0	.89	.82	.76	.86	.80	.74	.82	.77	.72	.78	.74	.70	.75	.71	.68	.65
3.0	.78	.69	.62	.76	.68	.62	.72	.66	.60	.69	.63	.59	.66	.61	.57	.55
4.0	.69	.60	.53	.67	.59	.52	.64	.57	.51	.61	.55	.50	.59	.53	.49	.47
5.0	.61	.52	.45	.60	.51	.45	.57	.50	.44	.55	.48	.43	.53	.47	.42	.40
6.0	.55	.46	.39	.54	.45	.39	.52	.44	.38	.50	.43	.38	.48	.42	.37	.35
7.0	.50	.41	.35	.49	.40	.35	.47	.39	.34	.45	.39	.34	.44	.38	.33	.31
8.0	.45	.37	.31	.45	.36	.31	.43	.36	.30	.41	.35	.30	.40	.34	.30	.28
9.0	.42	.33	.28	.41	.33	.28	.40	.32	.27	.38	.32	.27	.37	.31	.27	.25
10.0	.38	.30	.25	.38	.30	.25	.37	.30	.25	.35	.29	.24	.34	.28	.24	.22

C Range: 0 - 360DEG  
C Interval: 22.5DEG  
Test Speed: HIGH  
Temperature:25.3℃  
Operators:Cloud  
Test Date:2024-10-31γ Range: 0 - 180DEG  
γ Interval: 1.0DEG  
Test System:EVERFINE GO-2000B\_V1 SYSTEM V2.00.488  
Humidity:65.0%  
Test Distance:6.360m [K=1.0000]  
Remarks:

## WEC AND CCEC

Test:U:24.00V I:0.4246A P:10.19W PF:1.000 Freq:0Hz Lamp Flux:544.045x1 lm					
NAME: SF08-24V-2835-120-2200-80			TYPE:		WEIGHT:
SPEC.:			DIM.: Length=1m		SERIAL No.:
MFR.:			SUR.:		Shielding Angle:

pcc	80%			70%			50%			30%			10%			0
pw	50%	30%	10%	50%	30%	10%	50%	30%	10%	50%	30%	10%	50%	30%	10%	0
pfc	20%			20%			20%			20%			20%			0
RCR	RCR:Room Cavity Ratio						Wall Exitance Coefficients(WEC)									
0.0																
1.0	.326	.185	.059	.318	.181	.058	.302	.173	.055	.288	.166	.053	.275	.159	.051	
2.0	.301	.165	.051	.294	.162	.050	.280	.156	.048	.267	.150	.047	.256	.145	.046	
3.0	.276	.147	.044	.269	.144	.043	.257	.139	.042	.246	.135	.041	.235	.130	.040	
4.0	.253	.131	.039	.247	.129	.038	.236	.125	.037	.226	.121	.037	.217	.118	.036	
5.0	.233	.119	.034	.228	.117	.034	.218	.114	.033	.209	.110	.033	.200	.107	.032	
6.0	.215	.108	.031	.211	.106	.031	.202	.104	.030	.194	.101	.030	.186	.098	.029	
7.0	.200	.099	.028	.196	.098	.028	.188	.095	.027	.181	.093	.027	.174	.090	.027	
8.0	.187	.091	.026	.183	.090	.025	.176	.088	.025	.169	.086	.025	.163	.084	.024	
9.0	.175	.084	.024	.171	.083	.023	.165	.081	.023	.159	.080	.023	.153	.078	.022	
10.0	.164	.079	.022	.161	.078	.022	.155	.076	.021	.150	.074	.021	.144	.073	.021	

pcc	80%			70%			50%			30%			10%			0
pw	50%	30%	10%	50%	30%	10%	50%	30%	10%	50%	30%	10%	50%	30%	10%	0
pfc	20%			20%			20%			20%			20%			0
RCR	RCR:Room Cavity Ratio						Ceiling Cavity Exitance Coefficients (CCEC)									
0.0	.218	.218	.218	.186	.186	.186	.127	.127	.127	.073	.073	.073	.023	.023	.023	
1.0	.209	.184	.161	.179	.158	.139	.122	.109	.096	.071	.063	.056	.023	.020	.018	
2.0	.202	.160	.125	.173	.138	.108	.118	.095	.075	.068	.055	.044	.022	.018	.014	
3.0	.194	.143	.102	.166	.123	.088	.114	.085	.062	.066	.050	.036	.021	.016	.012	
4.0	.186	.129	.086	.160	.112	.075	.110	.078	.053	.064	.046	.031	.020	.015	.010	
5.0	.179	.119	.075	.153	.103	.065	.106	.072	.046	.061	.042	.027	.020	.014	.009	
6.0	.171	.111	.067	.147	.096	.059	.102	.067	.042	.059	.040	.025	.019	.013	.008	
7.0	.164	.104	.062	.141	.090	.054	.098	.063	.038	.057	.037	.023	.018	.012	.007	
8.0	.158	.098	.057	.136	.085	.050	.094	.060	.035	.055	.035	.021	.018	.012	.007	
9.0	.152	.093	.054	.131	.081	.047	.091	.057	.033	.053	.034	.020	.017	.011	.007	
10.0	.146	.089	.051	.126	.077	.045	.087	.054	.032	.051	.032	.019	.017	.011	.006	

C Range: 0 - 360DEG  
C Interval: 22.5DEG  
Test Speed: HIGH  
Temperature:25.3℃  
Operators:Cloud  
Test Date:2024-10-31

γ Range: 0 - 180DEG  
γ Interval: 1.0DEG  
Test System:EVERFINE GO-2000B\_V1 SYSTEM V2.00.488  
Humidity:65.0%  
Test Distance:6.360m [K=1.0000]  
Remarks:

UGR(Unified Glare Rating) Table

Test:U:24.00V I:0.4246A P:10.19W PF:1.000 Freq:0Hz Lamp Flux:544.045x1 lm										
NAME: SF08-24V-2835-120-2200-80					TYPE:			WEIGHT:		
SPEC.:					DIM.: Length=1m			SERIAL No.:		
MFR.:					SUR.:			Shielding Angle:		
ceiling/cavity	0.7	0.7	0.5	0.5	0.3	0.7	0.7	0.5	0.5	0.3
walls	0.5	0.3	0.5	0.3	0.3	0.5	0.3	0.5	0.3	0.3
working plane	0.2	0.2	0.2	0.2	0.2	0.2	0.2	0.2	0.2	0.2
Room dimensions	Viewed crosswise					Viewed endwise				
x = 2H y = 2H	22.3	23.8	22.6	24.1	24.4	22.4	23.9	22.8	24.2	24.5
3H	24.0	25.4	24.3	25.7	26.0	24.1	25.5	24.5	25.8	26.1
4H	24.7	26.1	25.1	26.4	26.7	24.9	26.2	25.2	26.5	26.8
6H	25.4	26.6	25.8	27.0	27.3	25.5	26.7	25.9	27.0	27.4
8H	25.6	26.8	26.0	27.2	27.5	25.7	26.9	26.1	27.2	27.6
12H	25.8	27.0	26.2	27.4	27.7	25.9	27.0	26.3	27.4	27.8
4H 2H	23.0	24.3	23.3	24.6	24.9	23.1	24.4	23.4	24.7	25.0
3H	24.8	26.0	25.2	26.3	26.7	24.9	26.1	25.3	26.4	26.8
4H	25.7	26.8	26.2	27.2	27.6	25.8	26.9	26.2	27.3	27.7
6H	26.5	27.4	27.0	27.9	28.3	26.6	27.5	27.0	27.9	28.4
8H	26.8	27.7	27.3	28.1	28.6	26.9	27.8	27.3	28.2	28.6
12H	27.1	27.9	27.6	28.4	28.9	27.1	27.9	27.6	28.4	28.9
8H 4H	26.1	26.9	26.5	27.4	27.8	26.1	27.0	26.6	27.4	27.9
6H	27.0	27.8	27.5	28.2	28.7	27.1	27.8	27.6	28.3	28.8
8H	27.5	28.1	28.0	28.6	29.1	27.5	28.1	28.0	28.6	29.2
12H	27.9	28.4	28.4	28.9	29.5	27.8	28.4	28.4	28.9	29.5
12H 4H	26.1	26.9	26.6	27.3	27.8	26.2	27.0	26.7	27.4	27.9
6H	27.1	27.8	27.6	28.3	28.8	27.2	27.8	27.7	28.3	28.8
8H	27.6	28.2	28.2	28.7	29.2	27.6	28.2	28.2	28.7	29.3
Variations with the observer position at spacings(CIE Pub.117):										
S = 1.0H	+ 0.1 / - 0.2					+ 0.1 / - 0.2				
1.5H	+ 0.2 / - 0.3					+ 0.2 / - 0.3				
2.0H	+ 0.1 / - 0.3					+ 0.1 / - 0.3				

CIE Pub.117, 544.0 lm Total Lamp Luminous Flux Correct (8log(F/F0) = -2.1)  
Area: 0.017 m2

C Range: 0 - 360DEG  
C Interval: 22.5DEG  
Test Speed: HIGH  
Temperature:25.3℃  
Operators:Cloud  
Test Date:2024-10-31

γ Range: 0 - 180DEG  
γ Interval: 1.0DEG  
Test System:EVERFINE GO-2000B\_V1 SYSTEM V2.00.488  
Humidity:65.0%  
Test Distance:6.360m [K=1.0000]  
Remarks:

## UTILIZATION FACTORS TABLE

Test:U:24.00V I:0.4246A P:10.19W PF:1.000 Freq:0Hz Lamp Flux:544.045x1 lm		
NAME: SF08-24V-2835-120-2200-80	TYPE:	WEIGHT:
SPEC.:	DIM.: Length=1m	SERIAL No.:
MFR.:	SUR.:	Shielding Angle:

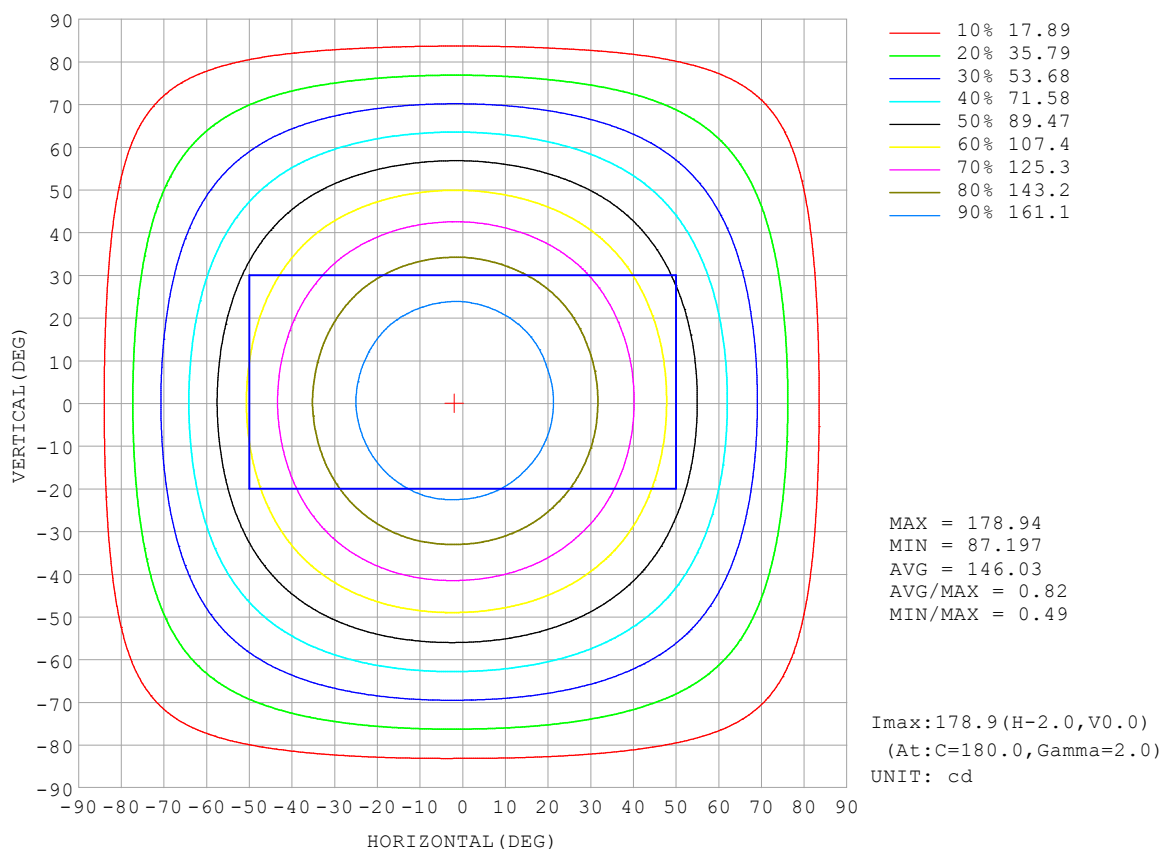
REFLECTANCE										
Ceiling	0.8	0.8	0.8	0.7	0.7	0.7	0.5	0.5	0.5	0
Walls	0.7	0.5	0.3	0.7	0.5	0.3	0.7	0.5	0.3	0
Working plane	0.2	0.2	0.2	0.2	0.2	0.2	0.2	0.2	0.2	0
ROOM INDEX	UTILIZATION FACTORS (PERCENT) $k(RI) \times RCR = 5$									
$k = 0.60$	56	44	37	55	44	37	53	43	37	30
0.80	66	54	46	64	53	46	62	52	45	38
1.00	74	62	55	72	62	54	70	63	54	46
1.25	81	70	63	79	69	62	76	67	61	53
1.50	86	76	68	84	74	68	80	72	66	58
2.00	93	84	77	91	82	76	87	80	74	65
2.50	97	89	82	94	87	81	90	84	79	70
3.00	100	93	87	98	91	86	93	88	83	74
4.00	104	98	93	102	96	92	97	92	89	78
5.00	107	102	97	104	99	95	99	95	92	81
ROOM INDEX	UF (total)									Direct
According to DIN EN 13032-2 2004			Suspended					SHRNOM = 1.25		

C Range: 0 - 360DEG  
 C Interval: 22.5DEG  
 Test Speed: HIGH  
 Temperature: 25.3°C  
 Operators: Cloud  
 Test Date: 2024-10-31

γ Range: 0 - 180DEG  
 γ Interval: 1.0DEG  
 Test System: EVERFINE GO-2000B\_V1 SYSTEM V2.00.488  
 Humidity: 65.0%  
 Test Distance: 6.360m [K=1.0000]  
 Remarks:

## ISOCANDELA DIAGRAM

Test:U:24.00V I:0.4246A P:10.19W PF:1.000 Freq:0Hz Lamp Flux:544.045x1 lm		
NAME: SF08-24V-2835-120-2200-80	TYPE:	WEIGHT:
SPEC.:	DIM.: Length=1m	SERIAL No.:
MFR.:	SUR.:	Shielding Angle:



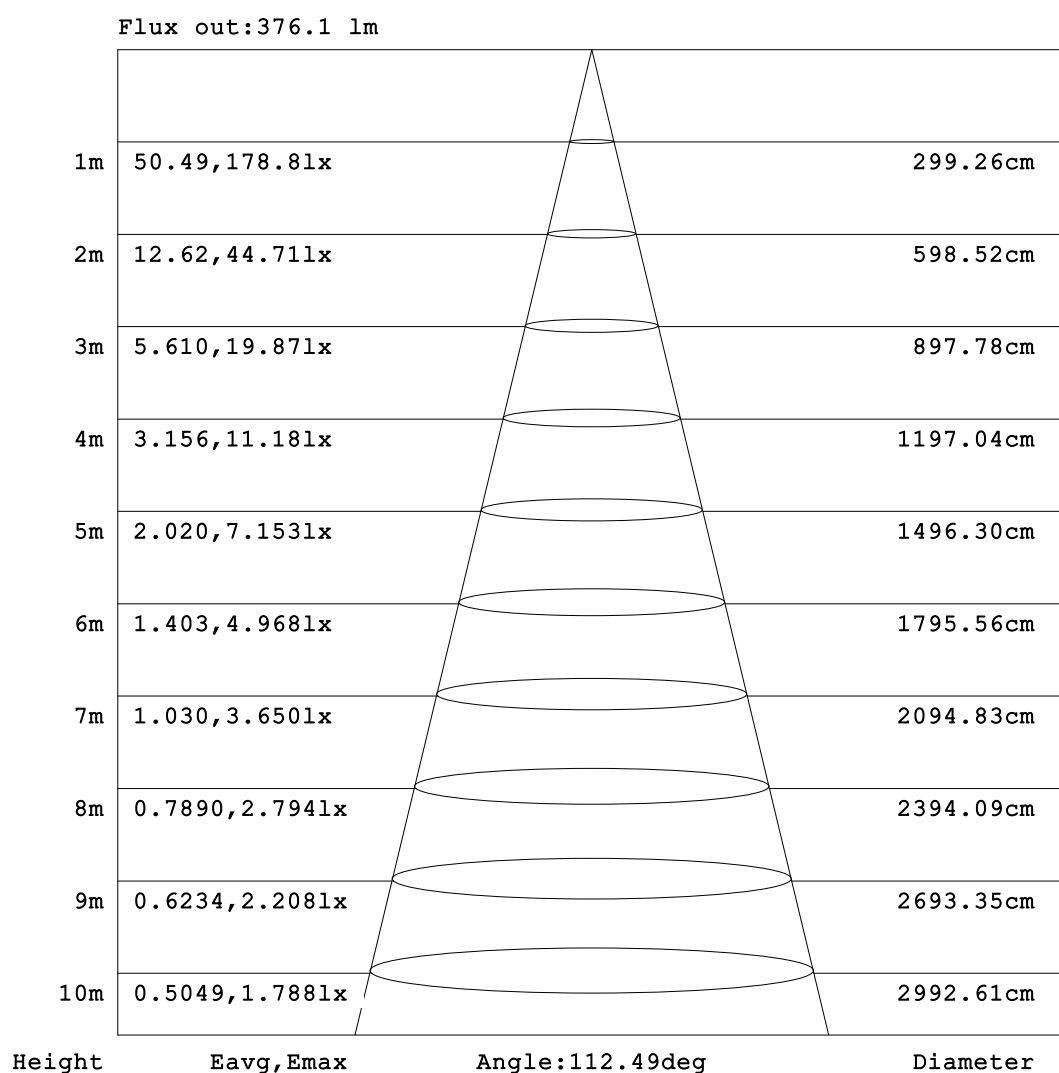
C Range: 0 - 360DEG  
C Interval: 22.5DEG  
Test Speed: HIGH  
Temperature:25.3℃  
Operators:Cloud  
Test Date:2024-10-31

γ Range: 0 - 180DEG  
γ Interval: 1.0DEG  
Test System:EVERFINE GO-2000B\_V1 SYSTEM V2.00.488  
Humidity:65.0%  
Test Distance:6.360m [K=1.0000]  
Remarks:



## AAI Figure

Test:U:24.00V I:0.4246A P:10.19W PF:1.000 Freq:0Hz Lamp Flux:544.045x1 lm		
NAME: SF08-24V-2835-120-2200-80	TYPE:	WEIGHT:
SPEC.:	DIM.: Length=1m	SERIAL No.:
MFR.:	SUR.:	Shielding Angle:



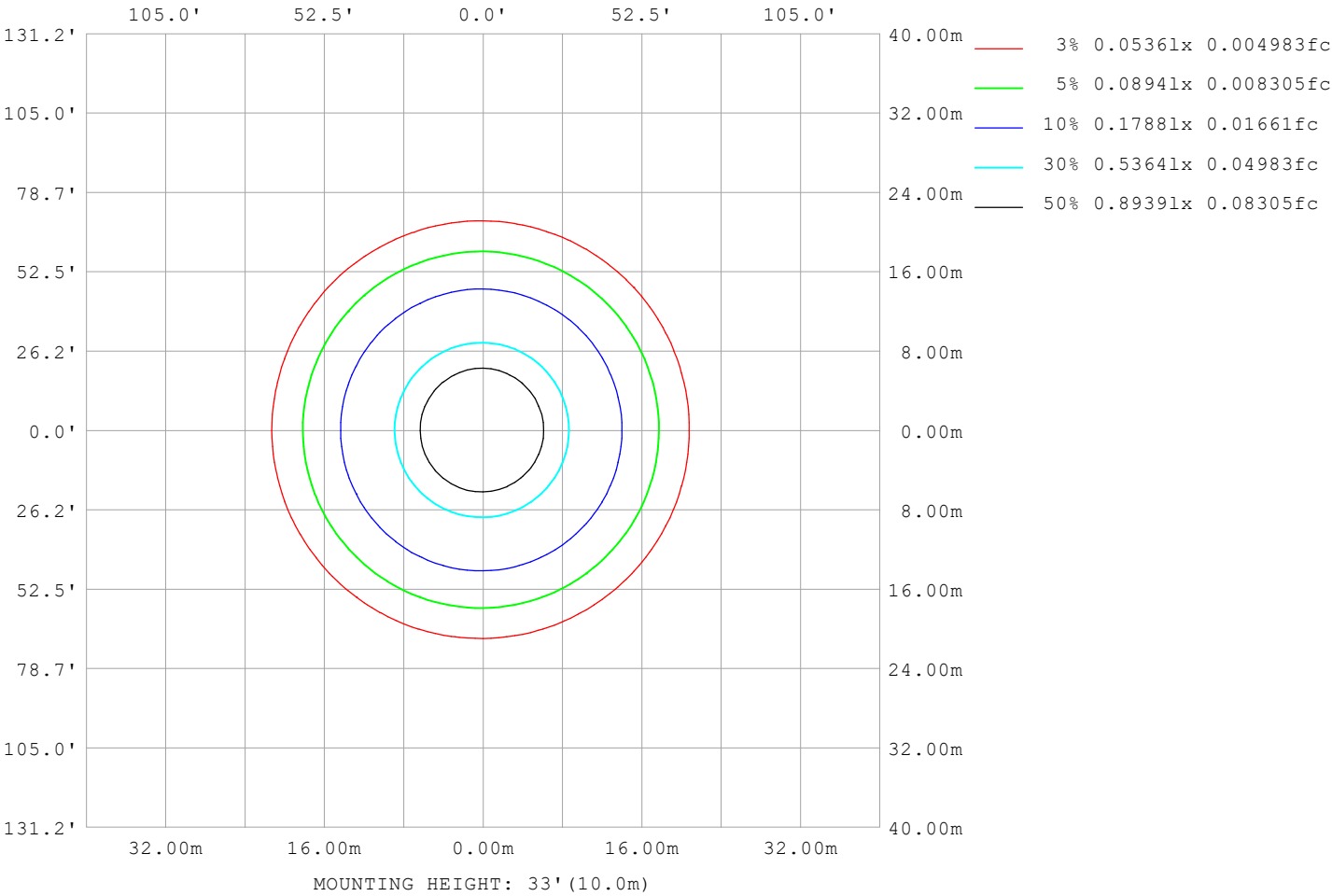
Note:The Curves indicate the illuminated area and the average illumination when the luminaire is at different distance.

C Range: 0 - 360DEG  
C Interval: 22.5DEG  
Test Speed: HIGH  
Temperature:25.3℃  
Operators:Cloud  
Test Date:2024-10-31

γ Range: 0 - 180DEG  
γ Interval: 1.0DEG  
Test System:EVERFINE GO-2000B\_V1 SYSTEM V2.00.488  
Humidity:65.0%  
Test Distance:6.360m [K=1.0000]  
Remarks:

ISOLUX DIAGRAM

Test:U:24.00V I:0.4246A P:10.19W PF:1.000 Freq:0Hz Lamp Flux:544.045x1 lm		
NAME: SF08-24V-2835-120-2200-80	TYPE:	WEIGHT:
SPEC.:	DIM.: Length=1m	SERIAL No.:
MFR.:	SUR.:	Shielding Angle:



C Range: 0 - 360DEG	γ Range: 0 - 180DEG
C Interval: 22.5DEG	γ Interval: 1.0DEG
Test Speed: HIGH	Test System:EVERFINE GO-2000B_V1 SYSTEM V2.00.488
Temperature:25.3℃	Humidity:65.0%
Operators:Cloud	Test Distance:6.360m [K=1.0000]
Test Date:2024-10-31	Remarks:

## LED Avg.L Report

Test:U:24.00V I:0.4246A P:10.19W PF:1.000 Freq:0Hz Lamp Flux:544.045x1 lm		
NAME: SF08-24V-2835-120-2200-80	TYPE:	WEIGHT:
SPEC.:	DIM.: Length=1m	SERIAL No.:
MFR.:	SUR.:	Shielding Angle:

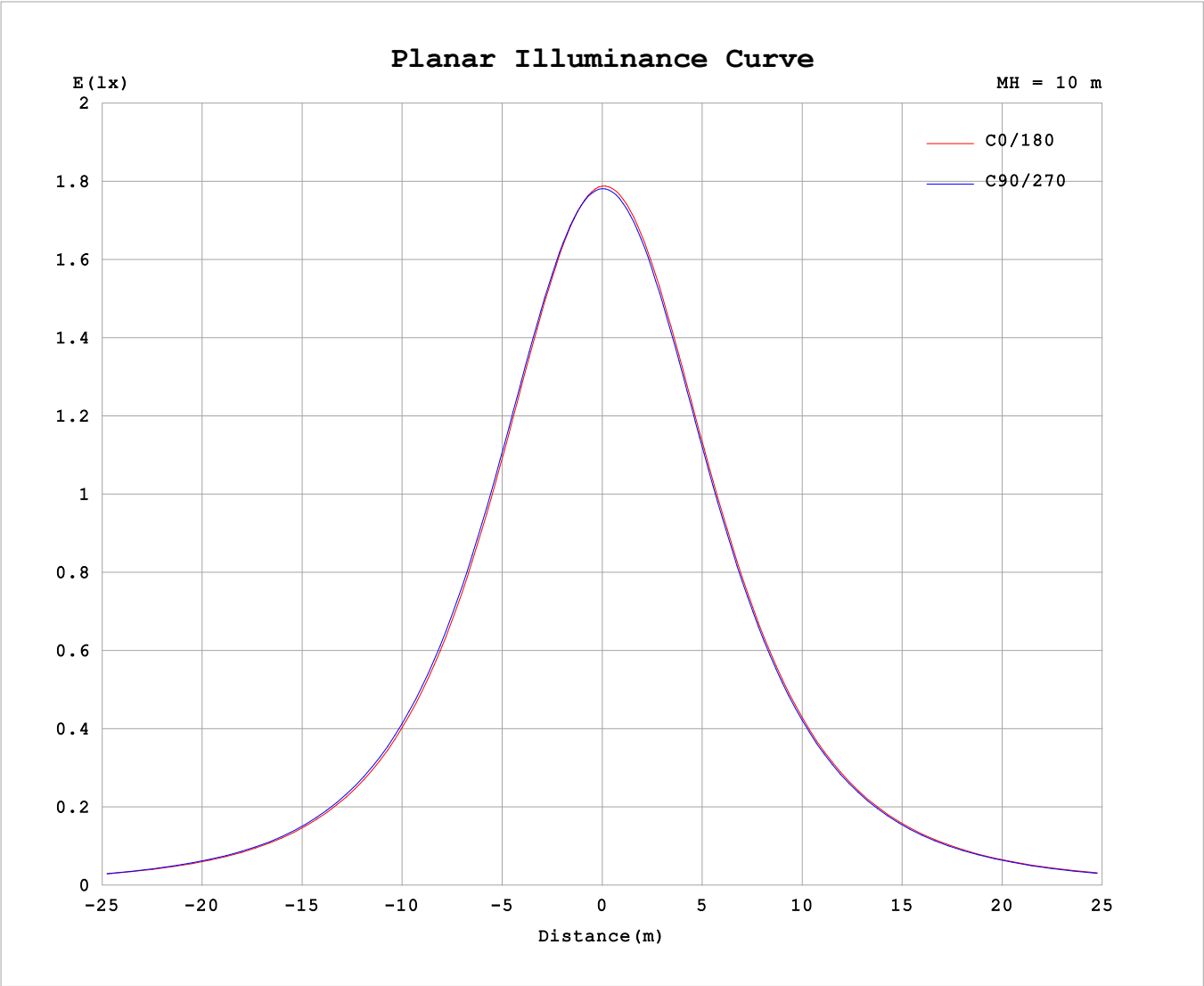
AvgL	cd/m2
L_0~180 (65) av	9253
L_0~180 (75) av	9151
L_0~180 (85) av	10179
L_90~270 (65) av	9286
L_90~270 (75) av	9084
L_90~270 (85) av	9305
L_45 (65) av	9285
L_45 (75) av	9133
L_45 (85) av	9677

Standard: GB/T 29293-2012

C Range: 0 - 360DEG  
C Interval: 22.5DEG  
Test Speed: HIGH  
Temperature:25.3℃  
Operators:Cloud  
Test Date:2024-10-31

γ Range: 0 - 180DEG  
γ Interval: 1.0DEG  
Test System:EVERFINE GO-2000B\_V1 SYSTEM V2.00.488  
Humidity:65.0%  
Test Distance:6.360m [K=1.0000]  
Remarks:

Planar Illuminance Curve



C Range: 0 - 360DEG	γ Range: 0 - 180DEG
C Interval: 22.5DEG	γ Interval: 1.0DEG
Test Speed: HIGH	Test System:EVERFINE GO-2000B_V1 SYSTEM V2.00.488
Temperature:25.3℃	Humidity:65.0%
Operators:Cloud	Test Distance:6.360m [K=1.0000]
Test Date:2024-10-31	Remarks:

## LUMINOUS DISTRIBUTION INTENSITY DATA

Test:U:24.00V I:0.4246A P:10.19W PF:1.000 Freq:0Hz Lamp Flux:544.045x1 lm																	
NAME: SF08-24V-2835-120-2200-80									TYPE:						WEIGHT:		
SPEC.:									DIM.: Length=1m						SERIAL No.:		
MFR.:									SUR.:						Shielding Angle:		

Table--1

UNIT: cd

C (DEG) γ (DEG)	0	22.5	45	67.5	90	112.5	135	157.5	180	202.5	225	247.5	270	292.5	315	337.5			
0	178	178	178	178	178	178	178	178	178	178	178	178	178	178	178	178			
5	177	177	177	177	177	178	178	178	178	178	178	178	178	177	177	177			
10	174	174	174	174	175	175	176	176	176	176	176	176	176	175	175	174			
15	169	169	169	170	170	171	172	172	173	173	173	172	172	171	170	169			
20	162	163	163	164	165	166	166	167	167	167	167	167	166	165	164	163			
25	155	155	155	156	157	159	160	160	161	161	161	160	159	158	157	156			
30	146	146	147	148	149	150	151	152	153	153	153	152	151	150	148	147			
35	136	136	137	138	139	141	142	143	143	143	143	142	142	140	139	137			
40	125	125	126	127	129	130	131	132	133	133	133	132	131	130	128	126			
45	114	114	114	116	117	119	120	121	121	121	121	120	119	118	117	115			
50	102	102	102	104	105	106	108	108	109	109	109	108	107	106	104	103			
55	89.2	89.2	89.7	90.9	92.2	93.6	94.7	95.5	96.0	95.9	95.9	95.1	94.3	93.1	91.8	90.2			
60	76.5	76.5	76.9	78.0	79.1	80.4	81.3	82.2	82.7	82.6	82.6	81.8	81.1	79.9	78.9	77.5			
65	63.8	63.8	64.1	65.0	65.8	67.0	67.8	68.7	69.2	69.1	69.0	68.3	67.6	66.7	65.8	64.7			
70	51.1	51.1	51.2	51.9	52.5	53.5	54.2	55.0	55.5	55.4	55.3	54.6	54.1	53.4	52.8	51.9			
75	38.6	38.6	38.5	38.9	39.2	40.0	40.6	41.4	41.9	41.8	41.7	41.1	40.7	40.2	39.9	39.2			
80	26.3	26.2	25.9	26.1	26.1	26.7	27.2	28.0	28.4	28.3	28.2	27.7	27.4	27.2	27.1	26.7			
85	14.7	14.4	13.7	13.4	13.2	13.6	14.0	14.9	15.4	15.2	15.0	14.4	14.4	14.3	14.6	14.7			
90	6.87	6.46	5.18	3.55	2.19	3.54	5.23	6.61	7.06	6.70	5.58	3.80	2.36	3.76	5.53	6.54			
95	2.64	2.51	2.36	2.28	2.27	2.28	2.24	2.26	2.28	2.14	2.01	1.95	1.98	2.11	2.27	2.41			
100	2.51	2.51	2.46	2.44	2.44	2.45	2.40	2.41	2.15	2.14	2.16	2.11	2.13	2.21	2.38	2.34			
105	2.69	2.69	2.64	2.63	2.62	2.63	2.59	2.59	2.31	2.32	2.33	2.28	2.31	2.29	2.54	2.50			
110	2.87	2.87	2.77	2.79	2.77	2.82	2.77	2.78	2.48	2.47	2.50	2.45	2.47	2.38	2.66	2.66			
115	3.05	3.04	2.98	2.92	2.91	2.99	2.95	2.95	2.63	2.64	2.67	2.62	2.57	2.48	2.67	2.81			
120	3.21	3.20	3.04	3.05	3.05	3.14	3.11	3.12	2.79	2.79	2.83	2.79	2.70	2.63	2.86	2.86			
125	3.37	3.36	3.15	3.18	3.19	3.30	3.28	3.28	2.95	2.95	3.00	2.96	2.84	2.81	3.12	2.86			
130	3.52	3.41	3.28	3.32	3.32	3.45	3.43	3.44	3.11	3.11	3.18	3.14	3.05	3.10	3.22	3.02			
135	3.66	3.60	3.41	3.46	3.45	3.59	3.58	3.59	3.27	3.28	3.34	3.32	3.35	3.36	3.47	3.23			
140	3.78	3.57	3.55	3.59	3.59	3.75	3.73	3.74	3.44	3.45	3.52	3.51	3.56	3.56	3.63	3.59			
145	3.90	3.69	3.67	3.73	3.73	3.90	3.89	3.89	3.60	3.62	3.70	3.70	3.76	3.75	3.79	3.74			
150	3.98	3.81	3.80	3.87	4.01	4.06	4.03	4.03	3.77	3.79	3.87	3.88	3.92	3.92	3.94	3.88			
155	4.10	3.94	3.93	4.16	4.16	4.21	4.18	4.17	3.93	3.96	4.05	4.06	4.10	4.08	4.10	4.03			
160	4.27	4.07	4.27	4.31	4.32	4.35	4.32	4.31	4.08	4.12	4.21	4.23	4.26	4.23	4.24	4.18			
165	4.38	4.19	4.39	4.44	4.44	4.47	4.44	4.44	4.15	4.28	4.36	4.38	4.41	4.37	4.38	4.33			
170	4.27	4.32	4.49	4.54	4.55	4.59	4.54	4.54	4.21	4.41	4.49	4.51	4.55	4.50	4.50	4.45			
175	4.32	4.57	4.57	4.63	4.63	4.66	4.61	4.61	4.31	4.52	4.58	4.60	4.64	4.61	4.59	4.54			
180	4.36	4.58	4.61	4.65	4.67	4.68	4.65	4.62	4.36	4.58	4.61	4.66	4.67	4.67	4.66	4.61			

C Range: 0 - 360DEG

C Interval: 22.5DEG

Test Speed: HIGH

Temperature:25.3℃

Operators:Cloud

Test Date:2024-10-31

γ Range: 0 - 180DEG

γ Interval: 1.0DEG

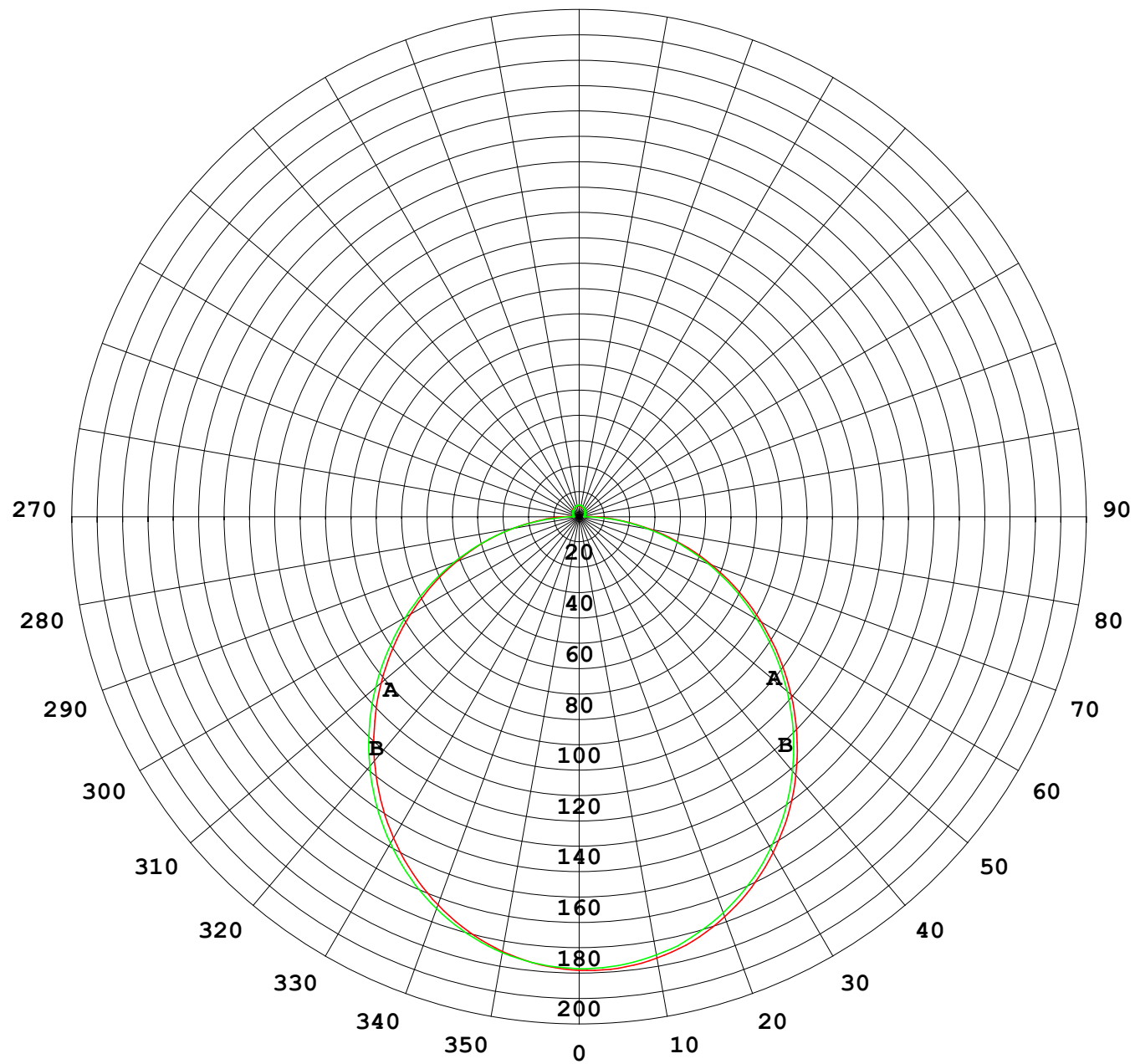
Test System:EVERFINE GO-2000B\_V1 SYSTEM V2.00.488

Humidity:65.0%

Test Distance:6.360m [K=1.0000]

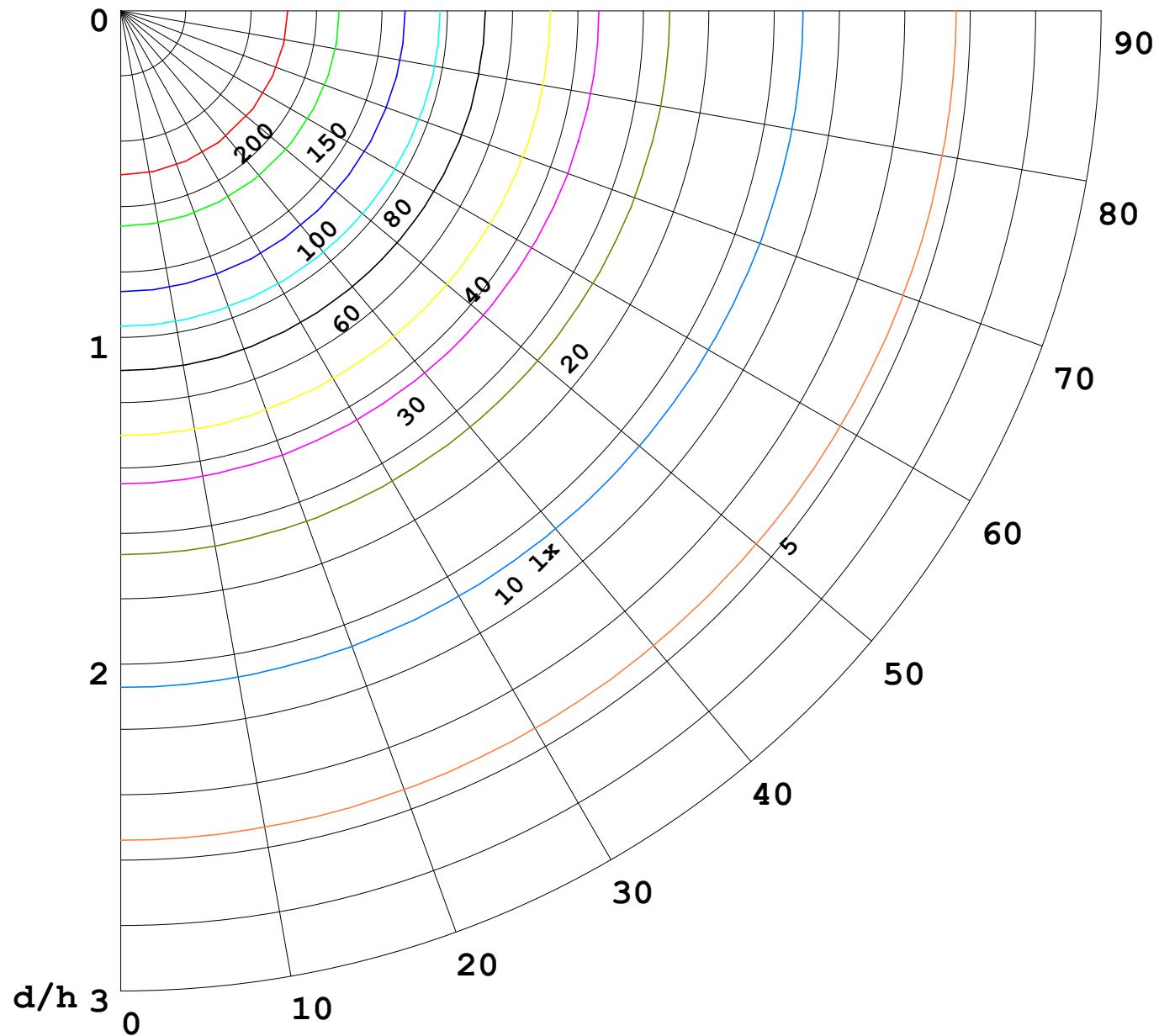
Remarks:

I (cd)



1000 lm

$\kappa = 1$



F = 1000 lm  
 K = 0.7  
 Hcc = 0.8 m  
 Hfc = 0.0 m  
 Eave = 100 lx

	Pcc	Pw	Pfc
—————	70	50	30
—————	50	30	20

