

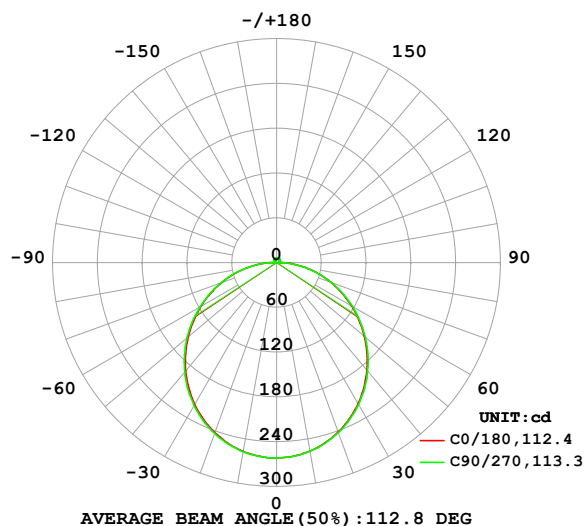
LUMINAIRE PHOTOMETRIC TEST REPORT

Test:U:24.00V I:0.4217A P:10.12W PF:1.000 Freq:0Hz
Lamp Flux:797.183x1 lm

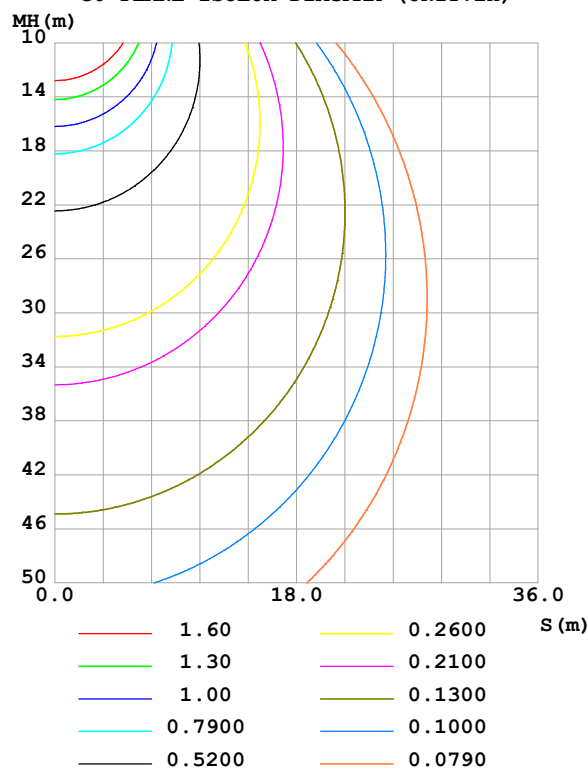
NAME: SF06-24V-2835-120-3000-80	TYPE:	WEIGHT:
SPEC.:	DIM.: Length=1m	SERIAL No.:
MFR.:	SUR.:	Shielding Angle:

DATA OF LAMP		PHOTOMETRIC DATA				Eff: 78.77 lm/W
MODEL		I _{max} (cd)	261.8	S/MH(C0/180)	1.25	
NOMINAL POWER(W)		LOR(%)	100.0	S/MH(C90/270)	1.26	
RATED VOLTAGE(V)		TOTAL FLUX(lm)	797.18	η UP,DN(C0-180)	1.8,48.1	
NOMINAL FLUX(lm)	797.183	CIE CLASS	DIRECT	η UP,DN(C180-360)	1.7,48.4	
LAMPS INSIDE	1	η up (%)	3.6	CIBSE SHR NOM	1.25	
TEST VOLTAGE(V)		η down (%)	96.4	CIBSE SHR MAX	1.35	

LUMINOUS INTENSITY DISTRIBUTION DIAGRAM



C0 PLANE ISOLUX DIAGRAM (UNIT:lx)



C Range: 0 - 360DEG
C Interval: 22.5DEG
Test Speed: HIGH
Temperature: 25.3 °C
Operators: Cloud
Test Date: 2024-10-24

γ Range: 0 - 180DEG
γ Interval: 1.0DEG
Test System: EVERFINE GO-2000B_V1 SYSTEM V2.00.488
Humidity: 65.0%
Test Distance: 6.360m [K=1.0000]
Remarks:

ZONAL FLUX DIAGRAM

ZONAL FLUX DIAGRAM:

γ	C0	C45	C90	C135	C180	C225	C270	C315	γ	Φ zone	Φ total	%lum, lamp
10	256.5	256.6	256.7	256.7	256.9	257.2	257.3	257.1	0- 10	24.75	24.75	3.11,3.11
20	241.6	242.1	242.4	242.3	242.4	243.2	243.5	242.9	10- 20	70.79	95.55	12,12
30	218.4	219.1	219.7	219.4	219.4	220.6	221.2	220.2	20- 30	107.0	202.5	25.4,25.4
40	188.3	189.3	190.0	189.5	189.6	190.9	191.6	190.4	30- 40	128.6	331.1	41.5,41.5
50	153.4	154.4	155.2	154.5	154.6	156.0	156.7	155.5	40- 50	133.5	464.6	58.3,58.3
60	115.8	116.6	117.4	116.6	116.9	118.0	118.5	117.6	50- 60	121.9	586.5	73.6,73.6
70	77.34	77.61	77.86	77.55	78.28	78.87	79.03	78.64	60- 70	96.72	683.3	85.7,85.7
80	39.41	39.15	38.71	39.00	40.11	40.21	39.92	40.11	70- 80	62.05	745.3	93.5,93.5
90	8.839	6.911	3.173	6.855	9.016	7.355	3.068	7.161	80- 90	23.55	768.9	96.4,96.4
100	3.378	3.443	3.597	3.692	3.414	3.542	3.160	2.943	90-100	4.243	773.1	97,97
110	3.888	3.931	4.062	4.140	3.788	3.894	3.624	3.489	100-110	3.841	776.9	97.5,97.5
120	4.378	4.347	4.472	4.579	4.180	4.267	4.072	3.915	110-120	4.039	781.0	98,98
130	4.828	4.748	4.859	4.957	4.581	4.625	4.528	4.485	120-130	4.021	785.0	98.5,98.5
140	5.235	5.155	5.252	5.344	4.970	5.040	5.002	4.946	130-140	3.797	788.8	98.9,98.9
150	5.595	5.539	5.722	5.774	5.386	5.520	5.490	5.411	140-150	3.343	792.1	99.4,99.4
160	6.036	6.038	6.130	6.164	5.864	5.990	5.981	5.899	150-160	2.670	794.8	99.7,99.7
170	6.241	6.368	6.459	6.456	6.172	6.365	6.408	6.324	160-170	1.751	796.6	99.9,99.9
180	6.403	6.553	6.618	6.574	6.400	6.553	6.616	6.586	170-180	0.6155	797.2	100,100
DEG	LUMINOUS INTENSITY:cd									UNIT:lm		

Conical surface Flux(90deg): 398.35 lm

%lum = 50.0%

%lamp = 50.0%

Conical surface Flux(130deg): 638.75 lm

%lum = 80.1%

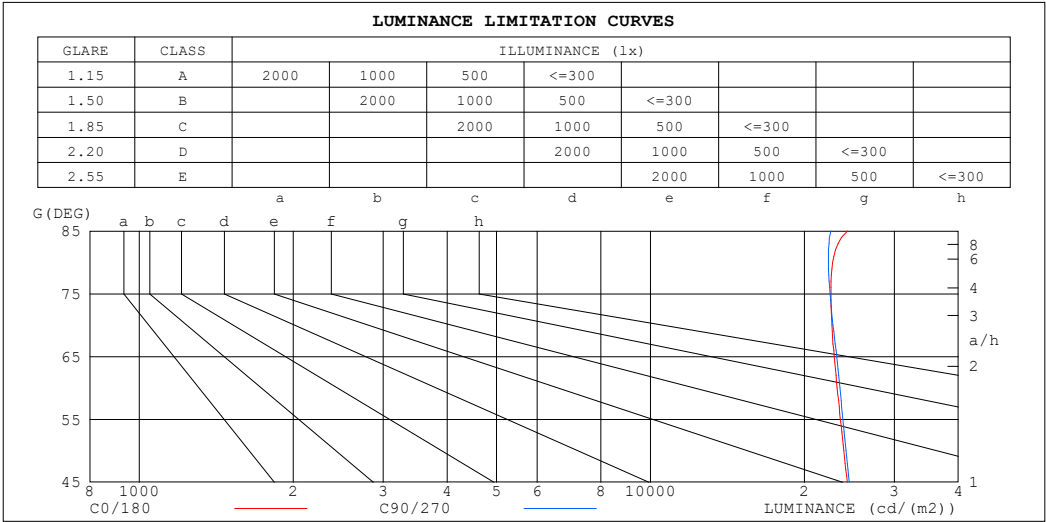
%lamp = 80.1%

C Range: 0 - 360DEG
 C Interval: 22.5DEG
 Test Speed: HIGH
 Temperature:25.3℃
 Operators:Cloud
 Test Date:2024-10-24

γ Range: 0 - 180DEG
 γ Interval: 1.0DEG
 Test System:EVERFINE GO-2000B_V1 SYSTEM V2.00.488
 Humidity:65.0%
 Test Distance:6.360m [K=1.0000]
 Remarks:

LUMINANCE LIMITATION CURVES

Test:U:24.00V I:0.4217A P:10.12W PF:1.000 Freq:0Hz Lamp Flux:797.183x1 lm		
NAME: SF06-24V-2835-120-3000-80	TYPE:	WEIGHT:
SPEC.:	DIM.: Length=1m	SERIAL No.:
MFR.:	SUR.:	Shielding Angle:



LUMINANCE cd/(m2)		
G (DEG)	C0/180	C90/270
85	24296	22558
80	22721	22284
75	22537	22455
70	22639	22754
65	22879	23132
60	23188	23464
55	23527	23785
50	23896	24136
45	24258	24471

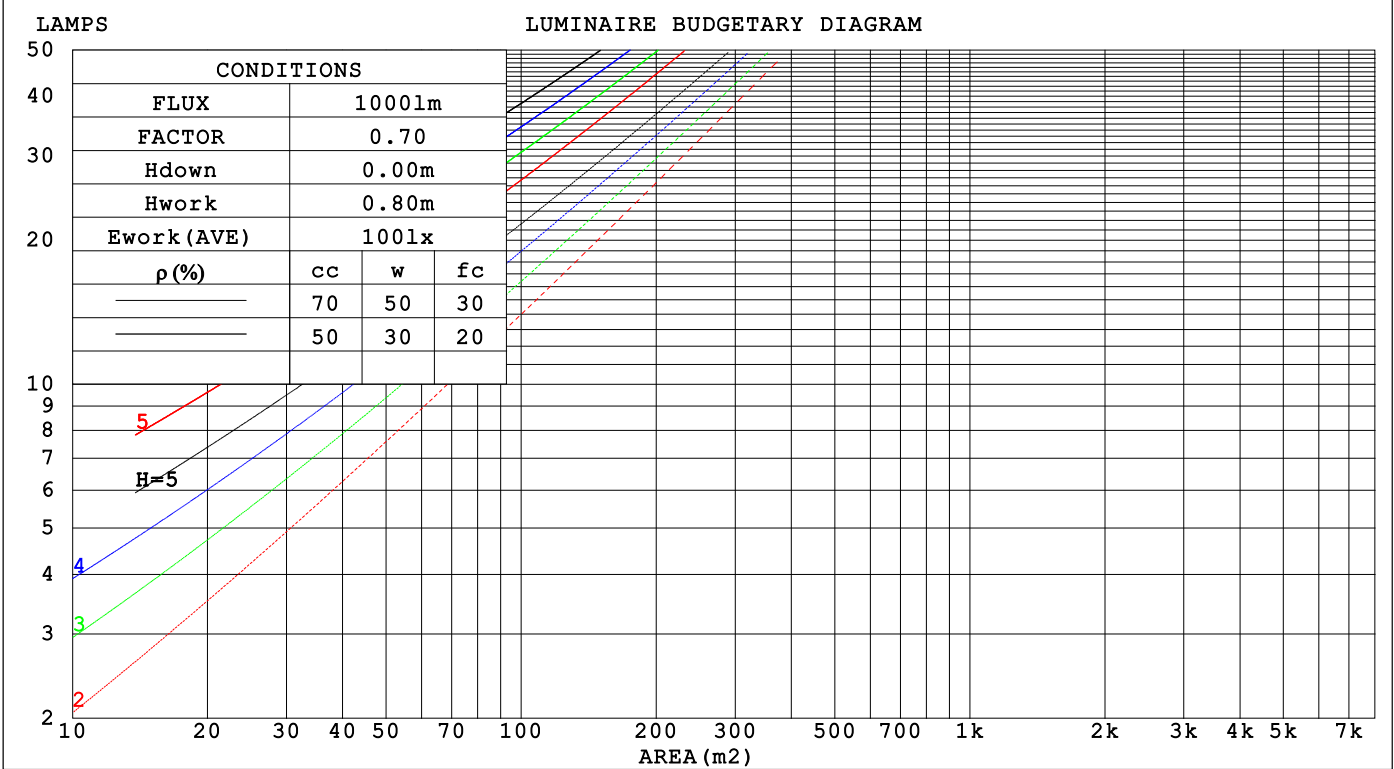
C Range: 0 - 360DEG
C Interval: 22.5DEG
Test Speed: HIGH
Temperature:25.3℃
Operators:Cloud
Test Date:2024-10-24

γ Range: 0 - 180DEG
γ Interval: 1.0DEG
Test System:EVERFINE GO-2000B_V1 SYSTEM V2.00.488
Humidity:65.0%
Test Distance:6.360m [K=1.0000]
Remarks:

CU AND LUMINAIRE BUDGETARY ESTIMATE DIAGRAM

Test:U:24.00V I:0.4217A P:10.12W PF:1.000 Freq:0Hz															
Lamp Flux:797.183x1 lm															
NAME: SF06-24V-2835-120-3000-80								TYPE:				WEIGHT:			
SPEC.:								DIM.: Length=1m				SERIAL No.:			
MFR.:								SUR.:				Shielding Angle:			

pcc	80%			70%			50%			30%			10%			0
p _w	50%	30%	10%	50%	30%	10%	50%	30%	10%	50%	30%	10%	50%	30%	10%	0
p _{fc}	20%			20%			20%			20%			20%			0
RCR	RCR:Room Cavity Ratio															
	Coefficients of Utilization(CU)															
0.0	1.18	1.18	1.18	1.15	1.15	1.15	1.09	1.09	1.09	1.04	1.04	1.04	.99	.99	.99	.96
1.0	1.02	.98	.94	.90	.95	.92	.95	.91	.88	.90	.87	.85	.86	.84	.82	.79
2.0	.89	.82	.76	.86	.80	.74	.82	.77	.72	.78	.74	.70	.75	.71	.68	.65
3.0	.78	.69	.63	.76	.68	.62	.72	.66	.60	.69	.63	.59	.66	.61	.57	.55
4.0	.69	.60	.53	.67	.59	.52	.64	.57	.51	.61	.55	.50	.59	.53	.49	.47
5.0	.61	.52	.45	.60	.51	.45	.57	.50	.44	.55	.48	.43	.53	.47	.42	.40
6.0	.55	.46	.39	.54	.45	.39	.52	.44	.39	.50	.43	.38	.48	.42	.37	.35
7.0	.50	.41	.35	.49	.41	.35	.47	.40	.34	.45	.39	.34	.44	.38	.33	.31
8.0	.45	.37	.31	.45	.36	.31	.43	.36	.30	.41	.35	.30	.40	.34	.30	.28
9.0	.42	.33	.28	.41	.33	.28	.40	.32	.27	.38	.32	.27	.37	.31	.27	.25
10.0	.38	.31	.25	.38	.30	.25	.37	.30	.25	.35	.29	.25	.34	.28	.24	.22



C Range: 0 - 360DEG
C Interval: 22.5DEG
Test Speed: HIGH
Temperature:25.3℃
Operators:Cloud
Test Date:2024-10-24

γ Range: 0 - 180DEG
γ Interval: 1.0DEG
Test System:EVERFINE GO-2000B_V1 SYSTEM V2.00.488
Humidity:65.0%
Test Distance:6.360m [K=1.0000]
Remarks:

WEC AND CCEC

Test:U:24.00V I:0.4217A P:10.12W PF:1.000 Freq:0Hz Lamp Flux:797.183x1 lm		
NAME: SF06-24V-2835-120-3000-80	TYPE:	WEIGHT:
SPEC.:	DIM.: Length=1m	SERIAL No.:
MFR.:	SUR.:	Shielding Angle:

pcc	80%			70%			50%			30%			10%			0														
pw	50%	30%	10%	50%	30%	10%	50%	30%	10%	50%	30%	10%	50%	30%	10%	0														
pfc	20%			20%			20%			20%			20%			0														
RCR	RCR:Room Cavity Ratio															Wall Exitance Coefficients(WEC)														
0.0																														
1.0	.325	.185	.059	.317	.181	.057	.302	.173	.055	.288	.166	.053	.275	.159	.051															
2.0	.301	.165	.051	.293	.162	.050	.280	.155	.048	.267	.150	.047	.255	.144	.046															
3.0	.276	.147	.044	.269	.144	.043	.257	.139	.042	.246	.135	.041	.235	.130	.040															
4.0	.253	.131	.039	.247	.129	.038	.236	.125	.037	.226	.121	.037	.217	.118	.036															
5.0	.233	.119	.034	.228	.117	.034	.218	.114	.033	.209	.110	.033	.201	.107	.032															
6.0	.215	.108	.031	.211	.106	.031	.202	.104	.030	.194	.101	.030	.186	.098	.029															
7.0	.200	.099	.028	.196	.098	.028	.188	.095	.027	.181	.093	.027	.174	.090	.027															
8.0	.186	.091	.026	.183	.090	.025	.176	.088	.025	.169	.086	.025	.163	.084	.024															
9.0	.175	.084	.024	.171	.083	.023	.165	.081	.023	.159	.080	.023	.153	.078	.022															
10.0	.164	.079	.022	.161	.078	.022	.155	.076	.021	.150	.074	.021	.144	.073	.021															

pcc	80%			70%			50%			30%			10%			0
pw	50%	30%	10%	50%	30%	10%	50%	30%	10%	50%	30%	10%	50%	30%	10%	0
pfc	20%			20%			20%			20%			20%			0
RCR	RCR:Room Cavity Ratio						Ceiling Cavity Exitance Coefficients (CCEC)									
0.0	.218	.218	.218	.186	.186	.186	.127	.127	.127	.073	.073	.073	.023	.023	.023	
1.0	.209	.183	.160	.179	.157	.138	.122	.108	.095	.070	.063	.056	.023	.020	.018	
2.0	.201	.159	.124	.172	.137	.108	.118	.095	.075	.068	.055	.044	.022	.018	.014	
3.0	.193	.142	.101	.166	.122	.088	.114	.085	.062	.066	.050	.036	.021	.016	.012	
4.0	.186	.129	.086	.159	.111	.074	.109	.078	.052	.063	.045	.031	.020	.015	.010	
5.0	.178	.119	.075	.153	.103	.065	.105	.072	.046	.061	.042	.027	.020	.014	.009	
6.0	.171	.110	.067	.147	.095	.058	.101	.067	.041	.059	.039	.024	.019	.013	.008	
7.0	.164	.103	.061	.141	.090	.053	.097	.063	.038	.057	.037	.022	.018	.012	.007	
8.0	.157	.098	.057	.135	.085	.049	.094	.059	.035	.055	.035	.021	.018	.012	.007	
9.0	.151	.093	.053	.130	.080	.046	.090	.057	.033	.053	.033	.020	.017	.011	.007	
10.0	.145	.088	.051	.125	.077	.044	.087	.054	.031	.051	.032	.019	.016	.010	.006	

C Range: 0 - 360DEG
C Interval: 22.5DEG
Test Speed: HIGH
Temperature:25.3℃
Operators:Cloud
Test Date:2024-10-24

γ Range: 0 - 180DEG
γ Interval: 1.0DEG
Test System:EVERFINE GO-2000B_V1 SYSTEM V2.00.488
Humidity:65.0%
Test Distance:6.360m [K=1.0000]
Remarks:

UGR(Unified Glare Rating) Table

Test:U:24.00V I:0.4217A P:10.12W PF:1.000 Freq:0Hz Lamp Flux:797.183x1 lm										
NAME: SF06-24V-2835-120-3000-80					TYPE:			WEIGHT:		
SPEC.:					DIM.: Length=1m			SERIAL No.:		
MFR.:					SUR.:			Shielding Angle:		
ceiling/cavity	0.7	0.7	0.5	0.5	0.3	0.7	0.7	0.5	0.5	0.3
walls	0.5	0.3	0.5	0.3	0.3	0.5	0.3	0.5	0.3	0.3
working plane	0.2	0.2	0.2	0.2	0.2	0.2	0.2	0.2	0.2	0.2
Room dimensions	Viewed crosswise					Viewed endwise				
x = 2H y = 2H	24.4	25.9	24.7	26.1	26.4	24.4	25.9	24.8	26.2	26.5
3H	26.1	27.4	26.4	27.7	28.1	26.1	27.5	26.5	27.8	28.1
4H	26.8	28.1	27.2	28.4	28.8	26.8	28.2	27.2	28.5	28.8
6H	27.4	28.7	27.8	29.0	29.4	27.5	28.7	27.8	29.0	29.4
8H	27.7	28.9	28.1	29.2	29.6	27.7	28.9	28.1	29.2	29.6
12H	27.9	29.0	28.3	29.4	29.8	27.9	29.0	28.3	29.4	29.7
4H 2H	25.0	26.3	25.4	26.7	27.0	25.1	26.4	25.4	26.7	27.0
3H	26.9	28.1	27.3	28.4	28.8	26.9	28.1	27.4	28.5	28.8
4H	27.8	28.8	28.2	29.2	29.6	27.8	28.9	28.2	29.3	29.7
6H	28.6	29.5	29.0	29.9	30.4	28.6	29.5	29.0	29.9	30.4
8H	28.9	29.8	29.4	30.2	30.7	28.9	29.7	29.3	30.2	30.6
12H	29.1	29.9	29.6	30.4	30.9	29.1	29.9	29.6	30.4	30.8
8H 4H	28.1	29.0	28.6	29.4	29.9	28.1	29.0	28.6	29.5	29.9
6H	29.1	29.8	29.6	30.3	30.8	29.1	29.8	29.6	30.3	30.8
8H	29.5	30.2	30.0	30.7	31.2	29.5	30.1	30.0	30.6	31.2
12H	29.9	30.5	30.4	31.0	31.5	29.8	30.4	30.4	30.9	31.5
12H 4H	28.2	29.0	28.6	29.4	29.9	28.2	29.0	28.7	29.4	29.9
6H	29.2	29.8	29.7	30.3	30.8	29.2	29.8	29.7	30.3	30.8
8H	29.7	30.2	30.2	30.7	31.3	29.6	30.2	30.2	30.7	31.3
Variations with the observer position at spacings(CIE Pub.117):										
S = 1.0H	+ 0.1 / - 0.2					+ 0.1 / - 0.2				
1.5H	+ 0.2 / - 0.3					+ 0.2 / - 0.3				
2.0H	+ 0.1 / - 0.3					+ 0.1 / - 0.3				

CIE Pub.117, 797.2 lm Total Lamp Luminous Flux Correct (8log(F/F0) = -0.8)
Area: 0.01 m2

C Range: 0 - 360DEG
C Interval: 22.5DEG
Test Speed: HIGH
Temperature:25.3℃
Operators:Cloud
Test Date:2024-10-24

γ Range: 0 - 180DEG
γ Interval: 1.0DEG
Test System:EVERFINE GO-2000B_V1 SYSTEM V2.00.488
Humidity:65.0%
Test Distance:6.360m [K=1.0000]
Remarks:

UTILIZATION FACTORS TABLE

Test:U:24.00V I:0.4217A P:10.12W PF:1.000 Freq:0Hz Lamp Flux:797.183x1 lm		
NAME: SF06-24V-2835-120-3000-80	TYPE:	WEIGHT:
SPEC.:	DIM.: Length=1m	SERIAL No.:
MFR.:	SUR.:	Shielding Angle:

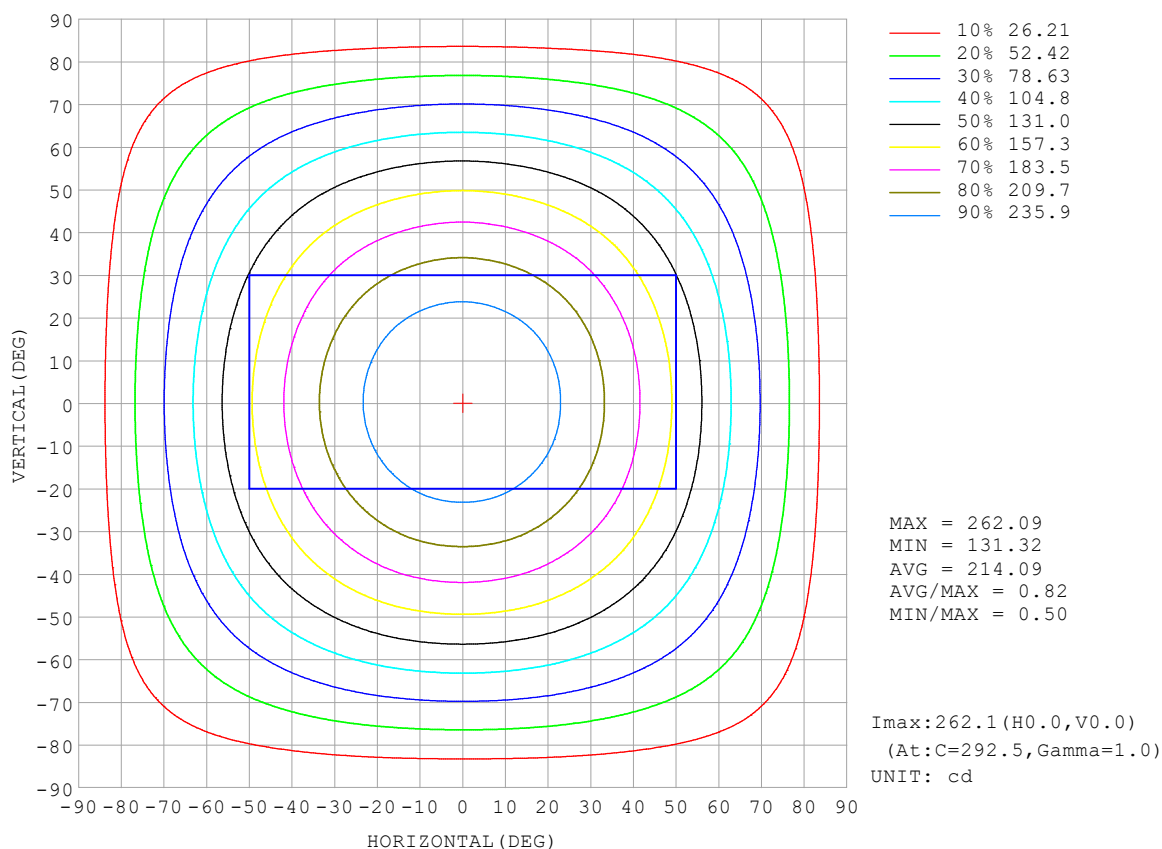
REFLECTANCE										
Ceiling	0.8	0.8	0.8	0.7	0.7	0.7	0.5	0.5	0.5	0
Walls	0.7	0.5	0.3	0.7	0.5	0.3	0.7	0.5	0.3	0
Working plane	0.2	0.2	0.2	0.2	0.2	0.2	0.2	0.2	0.2	0
ROOM INDEX	UTILIZATION FACTORS (PERCENT) $k(RI) \times RCR = 5$									
$k = 0.60$	56	44	37	55	44	37	54	43	37	30
0.80	66	54	46	64	53	46	62	52	45	38
1.00	74	62	55	72	62	55	70	63	54	46
1.25	81	70	63	79	69	62	76	67	61	53
1.50	86	76	68	84	75	68	81	72	66	58
2.00	93	84	77	91	82	76	87	80	74	66
2.50	97	89	82	95	87	81	90	84	79	70
3.00	100	93	87	98	91	86	93	88	83	74
4.00	104	98	93	102	96	92	97	92	89	79
5.00	107	102	97	104	100	96	99	95	92	82
ROOM INDEX	UF (total)									Direct
According to DIN EN 13032-2 2004			Suspended					SHRNOM = 1.25		

C Range: 0 - 360DEG
 C Interval: 22.5DEG
 Test Speed: HIGH
 Temperature: 25.3°C
 Operators: Cloud
 Test Date: 2024-10-24

γ Range: 0 - 180DEG
 γ Interval: 1.0DEG
 Test System: EVERFINE GO-2000B_V1 SYSTEM V2.00.488
 Humidity: 65.0%
 Test Distance: 6.360m [K=1.0000]
 Remarks:

ISOCANDELA DIAGRAM

Test:U:24.00V I:0.4217A P:10.12W PF:1.000 Freq:0Hz Lamp Flux:797.183x1 lm		
NAME: SF06-24V-2835-120-3000-80	TYPE:	WEIGHT:
SPEC.:	DIM.: Length=1m	SERIAL No.:
MFR.:	SUR.:	Shielding Angle:

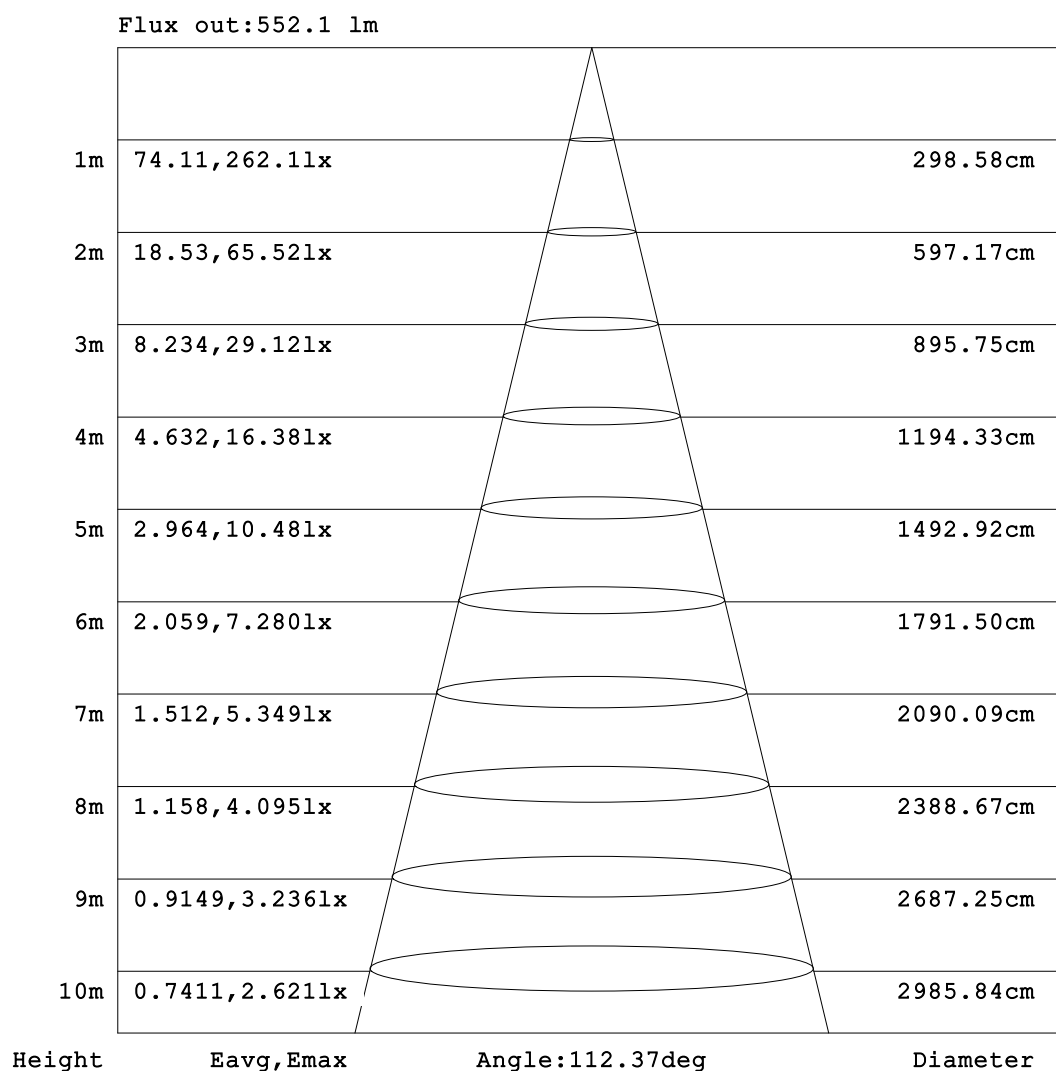


C Range: 0 - 360DEG
C Interval: 22.5DEG
Test Speed: HIGH
Temperature:25.3℃
Operators:Cloud
Test Date:2024-10-24

γ Range: 0 - 180DEG
γ Interval: 1.0DEG
Test System:EVERFINE GO-2000B_V1 SYSTEM V2.00.488
Humidity:65.0%
Test Distance:6.360m [K=1.0000]
Remarks:

AAI Figure

Test:U:24.00V I:0.4217A P:10.12W PF:1.000 Freq:0Hz Lamp Flux:797.183x1 lm		
NAME: SF06-24V-2835-120-3000-80	TYPE:	WEIGHT:
SPEC.:	DIM.: Length=1m	SERIAL No.:
MFR.:	SUR.:	Shielding Angle:



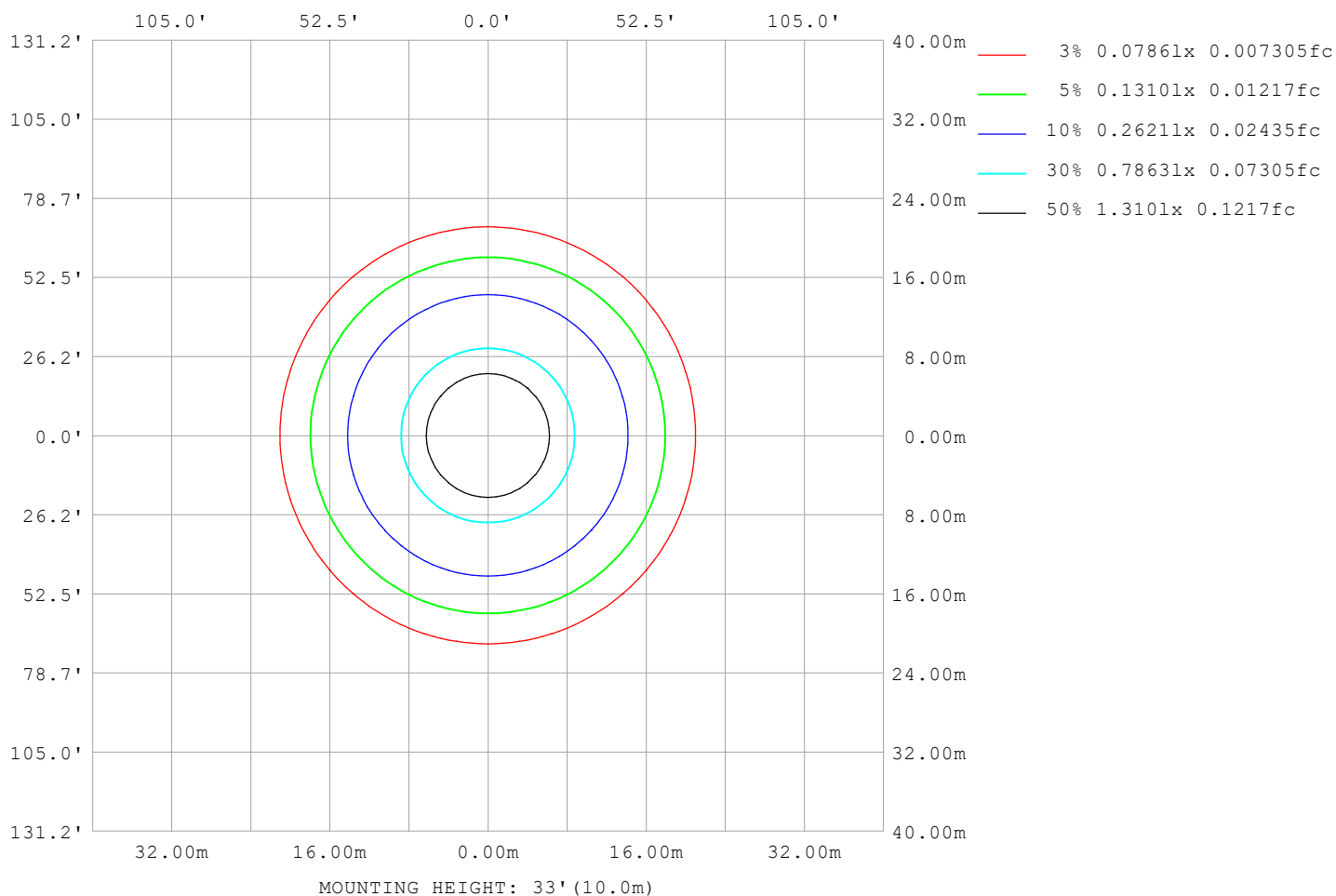
Note:The Curves indicate the illuminated area and the average illumination when the luminaire is at different distance.

C Range: 0 - 360DEG
C Interval: 22.5DEG
Test Speed: HIGH
Temperature:25.3℃
Operators:Cloud
Test Date:2024-10-24

γ Range: 0 - 180DEG
γ Interval: 1.0DEG
Test System:EVERFINE GO-2000B_V1 SYSTEM V2.00.488
Humidity:65.0%
Test Distance:6.360m [K=1.0000]
Remarks:

ISOLUX DIAGRAM

Test:U:24.00V I:0.4217A P:10.12W PF:1.000 Freq:0Hz Lamp Flux:797.183x1 lm		
NAME: SF06-24V-2835-120-3000-80	TYPE:	WEIGHT:
SPEC.:	DIM.: Length=1m	SERIAL No.:
MFR.:	SUR.:	Shielding Angle:



C Range: 0 - 360DEG
C Interval: 22.5DEG
Test Speed: HIGH
Temperature: 25.3°C
Operators: Cloud
Test Date: 2024-10-24

γ Range: 0 - 180DEG
γ Interval: 1.0DEG
Test System: EVERFINE GO-2000B_V1 SYSTEM V2.00.488
Humidity: 65.0%
Test Distance: 6.360m [K=1.0000]
Remarks:

LED Avg.L Report

Test:U:24.00V I:0.4217A P:10.12W PF:1.000 Freq:0Hz Lamp Flux:797.183x1 lm		
NAME: SF06-24V-2835-120-3000-80	TYPE:	WEIGHT:
SPEC.:	DIM.: Length=1m	SERIAL No.:
MFR.:	SUR.:	Shielding Angle:

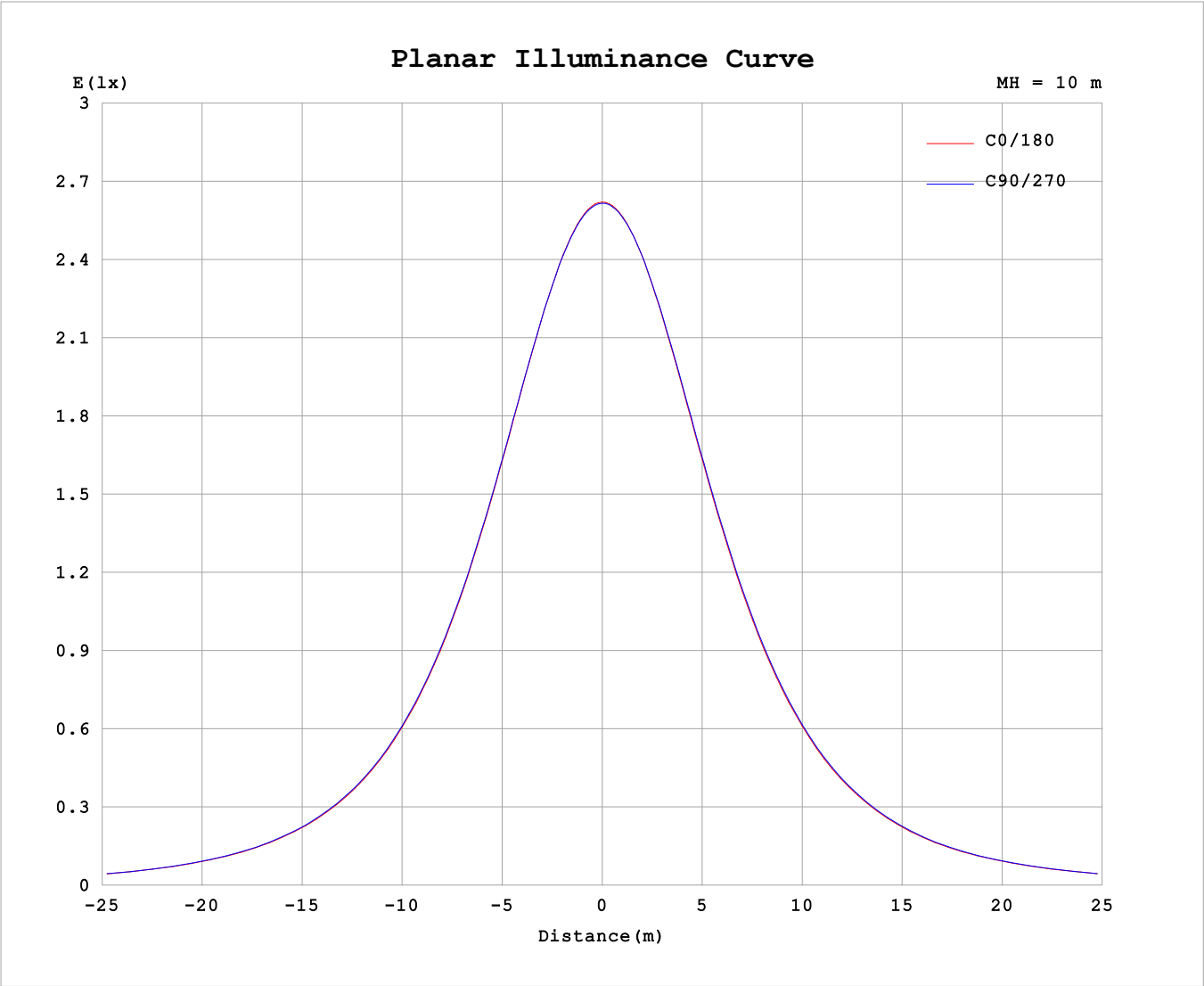
AvgL	cd/m2
L_0~180 (65) av	22977
L_0~180 (75) av	22671
L_0~180 (85) av	24917
L_90~270 (65) av	23266
L_90~270 (75) av	22704
L_90~270 (85) av	23193
L_45 (65) av	23121
L_45 (75) av	22710
L_45 (85) av	23969

Standard: GB/T 29293-2012

C Range: 0 - 360DEG
C Interval: 22.5DEG
Test Speed: HIGH
Temperature:25.3℃
Operators:Cloud
Test Date:2024-10-24

γ Range: 0 - 180DEG
γ Interval: 1.0DEG
Test System:EVERFINE GO-2000B_V1 SYSTEM V2.00.488
Humidity:65.0%
Test Distance:6.360m [K=1.0000]
Remarks:

Planar Illuminance Curve



C Range: 0 - 360DEG	γ Range: 0 - 180DEG
C Interval: 22.5DEG	γ Interval: 1.0DEG
Test Speed: HIGH	Test System:EVERFINE GO-2000B_V1 SYSTEM V2.00.488
Temperature:25.3℃	Humidity:65.0%
Operators:Cloud	Test Distance:6.360m [K=1.0000]
Test Date:2024-10-24	Remarks:

LUMINOUS DISTRIBUTION INTENSITY DATA

Test:U:24.00V I:0.4217A P:10.12W PF:1.000 Freq:0Hz Lamp Flux:797.183x1 lm																	
NAME: SF06-24V-2835-120-3000-80									TYPE:						WEIGHT:		
SPEC.:									DIM.: Length=1m						SERIAL No.:		
MFR.:									SUR.:						Shielding Angle:		

Table--1

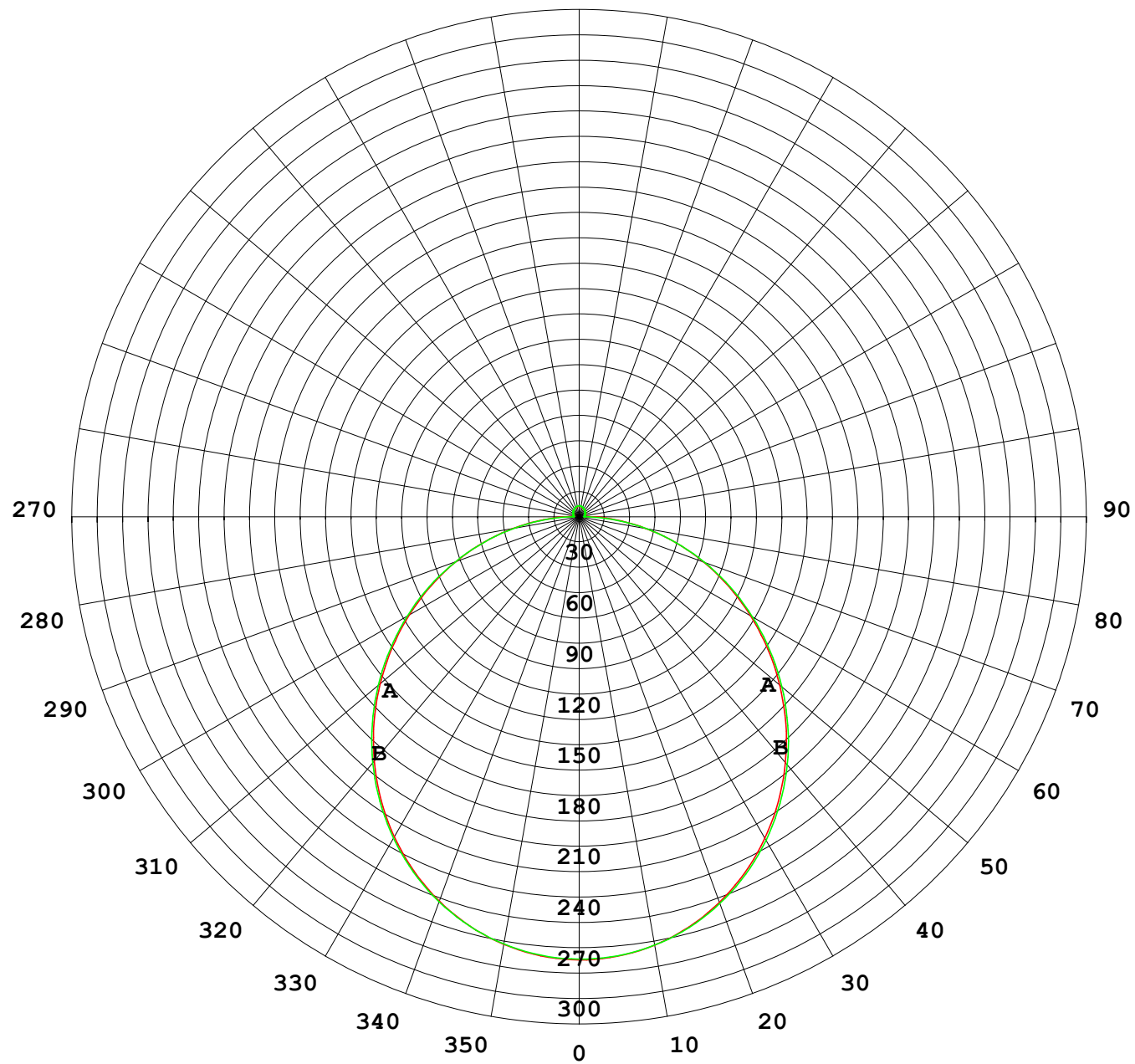
UNIT: cd

C (DEG) γ (DEG)	C (DEG)																
	0	22.5	45	67.5	90	112.5	135	157.5	180	202.5	225	247.5	270	292.5	315	337.5	
0	262	262	262	262	262	262	262	262	262	262	262	262	262	262	262	262	
5	260	261	260	260	260	260	260	260	261	260	261	261	261	261	261	261	
10	256	257	257	257	257	257	257	257	257	257	257	257	257	257	257	257	
15	250	250	251	251	251	251	251	251	251	251	251	252	252	251	251	251	
20	242	242	242	242	242	243	242	242	242	243	243	243	244	243	243	242	
25	231	231	232	232	232	232	232	232	232	232	233	233	233	233	233	232	
30	218	219	219	220	220	220	219	219	219	220	221	221	221	221	220	219	
35	204	205	205	206	206	206	205	205	205	206	207	207	207	207	206	205	
40	188	189	189	190	190	190	190	189	190	190	191	191	192	191	190	189	
45	171	172	172	173	173	173	173	172	173	173	174	174	175	174	174	172	
50	153	154	154	155	155	155	155	154	155	155	156	156	157	156	156	154	
55	135	135	136	137	136	137	136	136	136	136	137	137	138	137	137	136	
60	116	116	117	117	117	117	117	116	117	117	118	118	118	118	118	117	
65	96.6	96.9	97.1	97.8	97.8	97.7	97.1	97.1	97.6	97.7	98.5	98.6	98.8	98.4	98.2	97.4	
70	77.3	77.6	77.6	78.1	77.9	77.9	77.5	77.7	78.3	78.4	78.9	78.9	79.0	78.8	78.6	78.1	
75	58.3	58.5	58.3	58.5	58.1	58.3	58.1	58.5	59.1	59.1	59.4	59.3	59.4	59.2	59.3	58.9	
80	39.4	39.5	39.1	39.2	38.7	39.0	39.0	39.5	40.1	40.1	40.2	39.9	39.9	39.8	40.1	40.0	
85	21.2	21.1	20.5	20.1	19.7	20.0	20.3	21.5	22.3	21.9	21.4	20.8	20.8	20.7	21.4	21.5	
90	8.84	8.44	6.91	4.96	3.17	4.89	6.86	8.44	9.02	8.57	7.35	5.21	3.07	4.99	7.16	8.47	
95	3.71	3.46	3.25	3.29	3.35	3.44	3.53	3.60	3.30	3.36	3.38	3.25	3.02	3.04	2.84	3.30	
100	3.38	3.41	3.44	3.53	3.60	3.66	3.69	3.76	3.41	3.47	3.54	3.41	3.16	3.19	2.94	3.09	
105	3.64	3.66	3.70	3.77	3.85	3.89	3.91	3.97	3.60	3.65	3.71	3.59	3.39	3.29	3.17	3.32	
110	3.89	3.91	3.93	4.02	4.06	4.12	4.14	4.19	3.79	3.83	3.89	3.78	3.62	3.45	3.49	3.53	
115	4.14	4.16	4.16	4.22	4.27	4.31	4.37	4.41	3.98	4.02	4.08	3.96	3.86	3.82	3.80	3.71	
120	4.38	4.40	4.35	4.43	4.47	4.52	4.58	4.62	4.18	4.21	4.27	4.14	4.07	4.04	3.92	3.83	
125	4.61	4.63	4.55	4.63	4.66	4.73	4.78	4.83	4.38	4.41	4.45	4.34	4.29	4.26	4.23	4.04	
130	4.83	4.81	4.75	4.83	4.86	4.94	4.96	5.02	4.58	4.60	4.62	4.56	4.53	4.48	4.48	4.33	
135	5.04	5.03	4.95	5.03	5.05	5.15	5.13	5.20	4.78	4.79	4.80	4.79	4.76	4.71	4.72	4.62	
140	5.23	5.15	5.15	5.23	5.25	5.37	5.34	5.36	4.97	4.97	5.04	5.02	5.00	4.95	4.95	4.90	
145	5.43	5.34	5.35	5.42	5.44	5.57	5.55	5.55	5.15	5.19	5.28	5.26	5.25	5.19	5.17	5.13	
150	5.60	5.52	5.54	5.61	5.72	5.78	5.77	5.76	5.39	5.43	5.52	5.51	5.49	5.43	5.41	5.36	
155	5.84	5.73	5.74	5.90	5.92	6.00	5.98	5.96	5.64	5.68	5.76	5.75	5.74	5.68	5.66	5.60	
160	6.04	5.93	6.04	6.10	6.13	6.19	6.16	6.16	5.86	5.90	5.99	5.98	5.98	5.91	5.90	5.84	
165	6.21	6.11	6.21	6.29	6.31	6.36	6.33	6.33	6.07	6.11	6.19	6.21	6.21	6.15	6.13	6.06	
170	6.24	6.27	6.37	6.44	6.46	6.50	6.46	6.45	6.17	6.30	6.37	6.38	6.41	6.35	6.32	6.27	
175	6.34	6.48	6.49	6.56	6.57	6.60	6.54	6.53	6.32	6.44	6.50	6.51	6.56	6.50	6.48	6.42	
180	6.40	6.52	6.55	6.60	6.62	6.62	6.57	6.55	6.40	6.52	6.55	6.60	6.62	6.61	6.59	6.54	

C Range: 0 - 360DEG
C Interval: 22.5DEG
Test Speed: HIGH
Temperature:25.3℃
Operators:Cloud
Test Date:2024-10-24

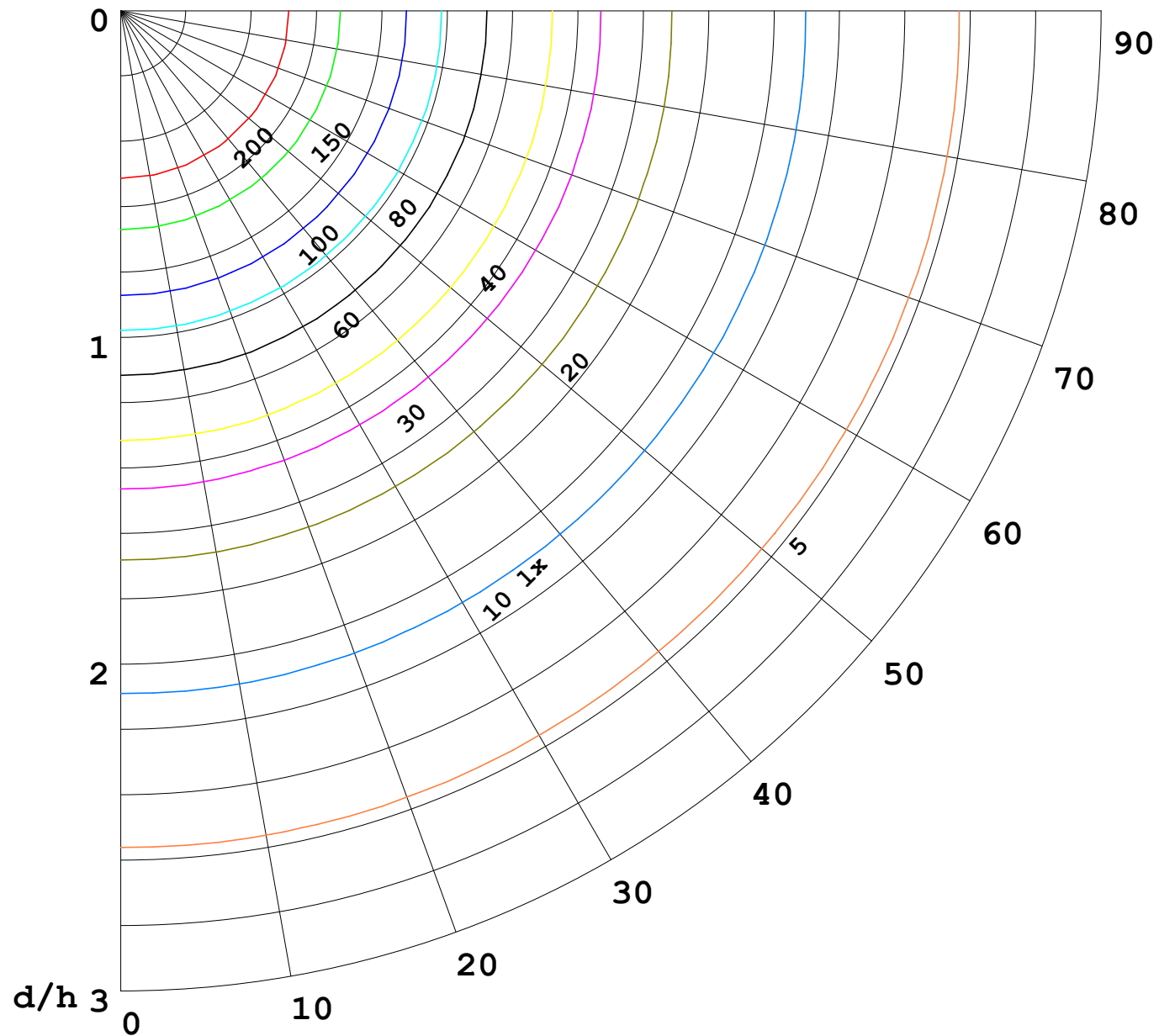
γ Range: 0 - 180DEG
γ Interval: 1.0DEG
Test System:EVERFINE GO-2000B_V1 SYSTEM V2.00.488
Humidity:65.0%
Test Distance:6.360m [K=1.0000]
Remarks:

I (cd)



1000 lm

$\kappa = 1$



F = 1000 lm
 K = 0.7
 Hcc = 0.8 m
 Hfc = 0.0 m
 Eave = 100 lx

	Pcc	Pw	Pfc
—————	70	50	30
—————	50	30	20

