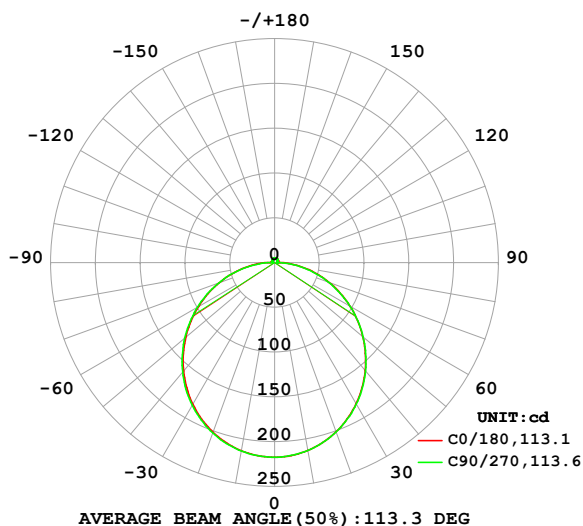


LUMINAIRE PHOTOMETRIC TEST REPORT

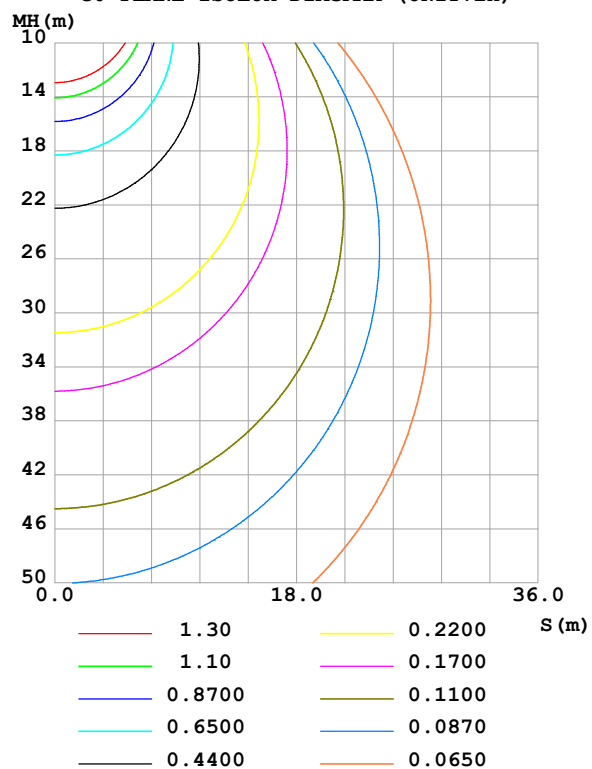
Test:U:24.00V I:0.4244A P:10.19W PF:1.000 Freq:0Hz Lamp Flux:666.906x1 lm		
NAME: SF06-24V-2835-120-2200-80	TYPE:	WEIGHT:
SPEC.:	DIM.: Length=1m	SERIAL No.:
MFR.:	SUR.:	Shielding Angle:

DATA OF LAMP		PHOTOMETRIC DATA Eff: 65.48 lm/W			
MODEL		I _{max} (cd)	217.3	S/MH(C0/180)	1.25
NOMINAL POWER(W)		LOR(%)	100.0	S/MH(C90/270)	1.26
RATED VOLTAGE(V)		TOTAL FLUX(lm)	666.91	η UP,DN(C0-180)	1.9,47.9
NOMINAL FLUX(lm)	666.906	CIE CLASS	DIRECT	η UP,DN(C180-360)	1.8,48.4
LAMPS INSIDE	1	η up (%)	3.7	CIBSE SHR NOM	1.25
TEST VOLTAGE(V)		η down (%)	96.3	CIBSE SHR MAX	1.35

LUMINOUS INTENSITY DISTRIBUTION DIAGRAM



C0 PLANE ISOLUX DIAGRAM (UNIT:lx)



C Range: 0 - 360DEG
C Interval: 22.5DEG
Test Speed: HIGH
Temperature:25.3℃
Operators:Cloud
Test Date:2024-10-31

γ Range: 0 - 180DEG
γ Interval: 1.0DEG
Test System:EVERFINE GO-2000B_V1 SYSTEM V2.00.488
Humidity:65.0%
Test Distance:6.360m [K=1.0000]
Remarks:

ZONAL FLUX DIAGRAM

ZONAL FLUX DIAGRAM:

γ	C0	C45	C90	C135	C180	C225	C270	C315	γ	Φ zone	Φ total	%lum, lamp
10	213.1	213.2	213.1	213.1	213.3	213.6	213.7	213.6	0- 10	20.55	20.55	3.08,3.08
20	201.0	201.2	201.3	201.3	201.5	202.1	202.4	202.1	10- 20	58.80	79.36	11.9,11.9
30	182.1	182.4	182.5	182.5	182.8	183.7	184.1	183.5	20- 30	88.97	168.3	25.2,25.2
40	157.4	157.8	158.0	157.9	158.2	159.4	159.9	159.1	30- 40	107.2	275.5	41.3,41.3
50	128.6	128.8	129.0	128.9	129.5	130.6	131.0	130.3	40- 50	111.4	387.0	58,58
60	97.32	97.23	97.25	97.33	98.14	99.02	99.25	98.75	50- 60	102.0	488.9	73.3,73.3
70	64.97	64.53	64.09	64.60	65.82	66.27	66.09	66.03	60- 70	80.88	569.8	85.4,85.4
80	33.23	32.45	31.61	32.60	34.13	34.10	33.37	33.73	70- 80	51.84	621.7	93.2,93.2
90	8.965	6.743	2.554	7.045	9.704	7.811	2.764	6.972	80- 90	20.27	641.9	96.3,96.3
100	3.063	2.963	2.925	3.531	3.720	3.526	2.707	2.532	90-100	4.225	646.2	96.9,96.9
110	3.406	3.324	3.330	3.759	3.763	3.654	3.053	3.072	100-110	3.452	649.6	97.4,97.4
120	3.783	3.627	3.679	4.033	3.945	3.867	3.426	3.491	110-120	3.551	653.2	97.9,97.9
130	4.131	3.947	4.009	4.282	4.152	4.084	3.799	3.823	120-130	3.476	656.6	98.5,98.5
140	4.362	4.288	4.346	4.464	4.368	4.263	4.197	4.193	130-140	3.234	659.9	98.9,98.9
150	4.747	4.611	4.765	4.834	4.547	4.658	4.616	4.578	140-150	2.812	662.7	99.4,99.4
160	5.073	5.064	5.123	5.169	4.947	5.036	5.020	4.973	150-160	2.243	664.9	99.7,99.7
170	5.211	5.336	5.407	5.406	5.165	5.350	5.375	5.320	160-170	1.470	666.4	99.9,99.9
180	5.341	5.495	5.545	5.522	5.344	5.497	5.548	5.525	170-180	0.5160	666.9	100,100
DEG	LUMINOUS INTENSITY:cd									UNIT:lm		

Conical surface Flux(90deg): 331.6 lm

%lum = 49.7%

%lamp = 49.7%

Conical surface Flux(130deg): 532.61 lm

%lum = 79.9%

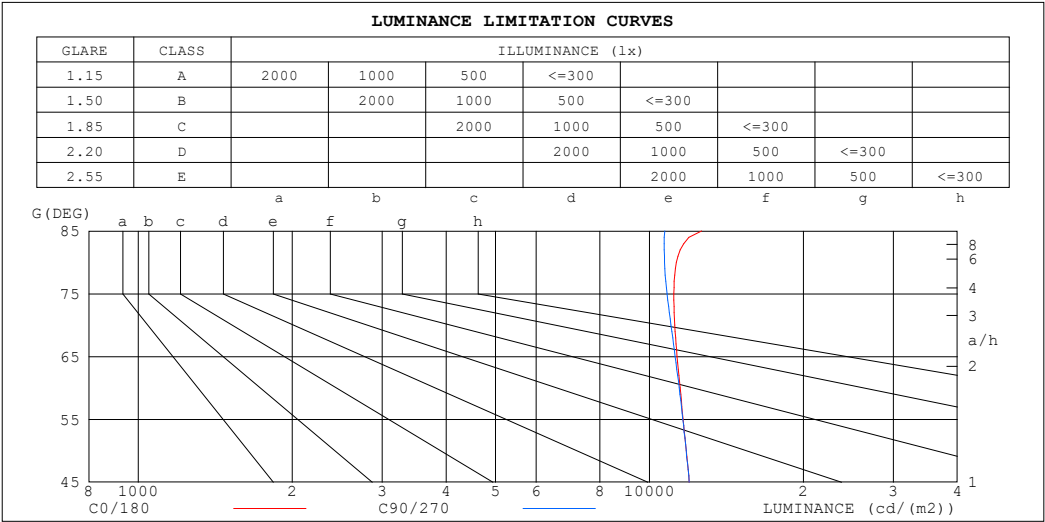
%lamp = 79.9%

C Range: 0 - 360DEG
 C Interval: 22.5DEG
 Test Speed: HIGH
 Temperature:25.3℃
 Operators:Cloud
 Test Date:2024-10-31

γ Range: 0 - 180DEG
 γ Interval: 1.0DEG
 Test System:EVERFINE GO-2000B_V1 SYSTEM V2.00.488
 Humidity:65.0%
 Test Distance:6.360m [K=1.0000]
 Remarks:

LUMINANCE LIMITATION CURVES

Test:U:24.00V I:0.4244A P:10.19W PF:1.000 Freq:0Hz Lamp Flux:666.906x1 lm		
NAME: SF06-24V-2835-120-2200-80	TYPE:	WEIGHT:
SPEC.:	DIM.: Length=1m	SERIAL No.:
MFR.:	SUR.:	Shielding Angle:



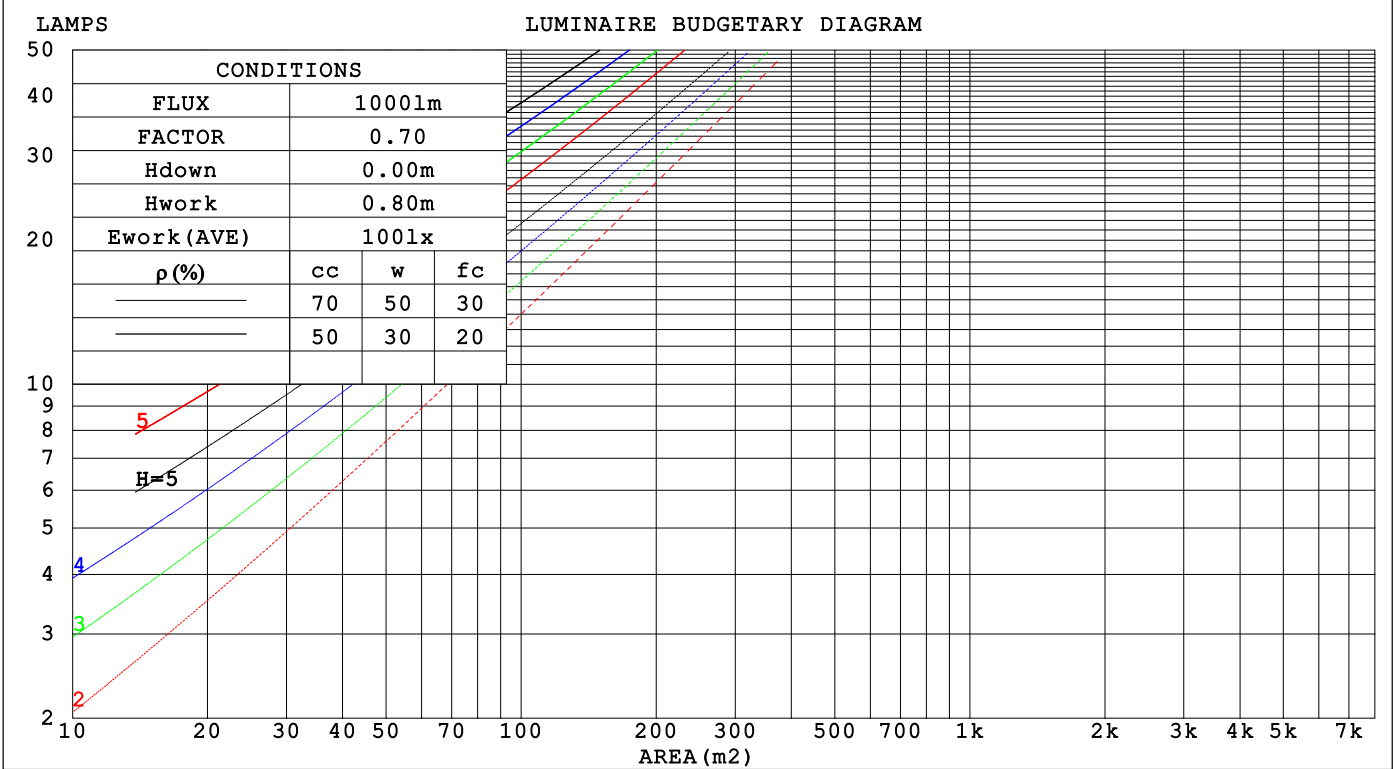
LUMINANCE cd/(m2)		
G (DEG)	C0/180	C90/270
85	12651	10722
80	11285	10702
75	11157	10821
70	11202	11014
65	11325	11225
60	11477	11433
55	11638	11619
50	11799	11796
45	11960	11960

C Range: 0 - 360DEG	γ Range: 0 - 180DEG
C Interval: 22.5DEG	γ Interval: 1.0DEG
Test Speed: HIGH	Test System:EVERFINE GO-2000B_V1 SYSTEM V2.00.488
Temperature:25.3℃	Humidity:65.0%
Operators:Cloud	Test Distance:6.360m [K=1.0000]
Test Date:2024-10-31	Remarks:

CU AND LUMINAIRE BUDGETARY ESTIMATE DIAGRAM

Test:U:24.00V I:0.4244A P:10.19W PF:1.000 Freq:0Hz		
Lamp Flux:666.906x1 lm		
NAME: SF06-24V-2835-120-2200-80	TYPE:	WEIGHT:
SPEC.:	DIM.: Length=1m	SERIAL No.:
MFR.:	SUR.:	Shielding Angle:

pcc	80%			70%			50%			30%			10%			0
pw	50%	30%	10%	50%	30%	10%	50%	30%	10%	50%	30%	10%	50%	30%	10%	0
pfc	20%			20%			20%			20%			20%			0
RCR	RCR:Room Cavity Ratio Coefficients of Utilization(CU)															
0.0	1.18	1.18	1.18	1.15	1.15	1.15	1.09	1.09	1.09	1.04	1.04	1.04	.99	.99	.99	.96
1.0	1.02	.98	.93	.99	.95	.92	.94	.91	.88	.90	.87	.85	.86	.84	.81	.79
2.0	.89	.81	.76	.86	.80	.74	.82	.77	.72	.78	.74	.70	.75	.71	.68	.65
3.0	.78	.69	.62	.76	.68	.62	.72	.65	.60	.69	.63	.59	.66	.61	.57	.55
4.0	.69	.60	.53	.67	.59	.52	.64	.57	.51	.61	.55	.50	.59	.53	.49	.46
5.0	.61	.52	.45	.60	.51	.45	.57	.50	.44	.55	.48	.43	.53	.47	.42	.40
6.0	.55	.46	.39	.54	.45	.39	.52	.44	.38	.50	.43	.38	.48	.42	.37	.35
7.0	.50	.41	.35	.49	.40	.34	.47	.39	.34	.45	.38	.33	.43	.37	.33	.31
8.0	.45	.37	.31	.45	.36	.31	.43	.36	.30	.41	.35	.30	.40	.34	.29	.27
9.0	.42	.33	.28	.41	.33	.28	.39	.32	.27	.38	.32	.27	.37	.31	.27	.25
10.0	.38	.30	.25	.38	.30	.25	.36	.30	.25	.35	.29	.24	.34	.28	.24	.22



C Range: 0 - 360DEG
C Interval: 22.5DEG
Test Speed: HIGH
Temperature:25.3℃
Operators:Cloud
Test Date:2024-10-31

γ Range: 0 - 180DEG
γ Interval: 1.0DEG
Test System:EVERFINE GO-2000B_V1 SYSTEM V2.00.488
Humidity:65.0%
Test Distance:6.360m [K=1.0000]
Remarks:

WEC AND CCEC

Test:U:24.00V I:0.4244A P:10.19W PF:1.000 Freq:0Hz Lamp Flux:666.906x1 lm		
NAME: SF06-24V-2835-120-2200-80	TYPE:	WEIGHT:
SPEC.:	DIM.: Length=1m	SERIAL No.:
MFR.:	SUR.:	Shielding Angle:

pcc	80%			70%			50%			30%			10%			0														
pw	50%	30%	10%	50%	30%	10%	50%	30%	10%	50%	30%	10%	50%	30%	10%	0														
pfc	20%			20%			20%			20%			20%			0														
RCR	RCR:Room Cavity Ratio															Wall Exitance Coefficients(WEC)														
0.0																														
1.0	.326	.186	.059	.318	.181	.058	.303	.174	.055	.288	.166	.053	.275	.160	.051															
2.0	.301	.165	.051	.294	.162	.050	.280	.156	.048	.267	.150	.047	.256	.145	.046															
3.0	.276	.147	.044	.269	.144	.043	.257	.139	.042	.246	.135	.041	.235	.130	.040															
4.0	.253	.132	.039	.247	.129	.038	.236	.125	.037	.226	.121	.037	.217	.118	.036															
5.0	.233	.119	.034	.228	.117	.034	.218	.114	.033	.209	.110	.033	.200	.107	.032															
6.0	.215	.108	.031	.211	.107	.031	.202	.104	.030	.194	.101	.030	.186	.098	.029															
7.0	.200	.099	.028	.196	.098	.028	.188	.095	.027	.181	.093	.027	.174	.090	.027															
8.0	.187	.091	.026	.183	.090	.025	.176	.088	.025	.169	.086	.025	.163	.084	.024															
9.0	.175	.084	.024	.171	.083	.023	.165	.081	.023	.159	.080	.023	.153	.078	.022															
10.0	.164	.079	.022	.161	.078	.022	.155	.076	.021	.150	.074	.021	.144	.073	.021															

pcc	80%			70%			50%			30%			10%			0
pw	50%	30%	10%	50%	30%	10%	50%	30%	10%	50%	30%	10%	50%	30%	10%	0
pfc	20%			20%			20%			20%			20%			0
RCR	RCR:Room Cavity Ratio						Ceiling Cavity Exitance Coefficients (CCEC)									
0.0	.219	.219	.219	.187	.187	.187	.128	.128	.128	.073	.073	.073	.023	.023	.023	
1.0	.210	.185	.162	.180	.159	.139	.123	.109	.096	.071	.063	.056	.023	.020	.018	
2.0	.202	.161	.126	.173	.138	.109	.119	.096	.076	.069	.056	.044	.022	.018	.014	
3.0	.195	.143	.103	.167	.124	.089	.115	.086	.062	.066	.050	.037	.021	.016	.012	
4.0	.187	.130	.087	.161	.113	.076	.110	.078	.053	.064	.046	.031	.021	.015	.010	
5.0	.180	.120	.076	.154	.104	.066	.106	.073	.047	.062	.043	.028	.020	.014	.009	
6.0	.172	.112	.068	.148	.097	.059	.102	.068	.042	.059	.040	.025	.019	.013	.008	
7.0	.165	.105	.063	.142	.091	.054	.098	.064	.039	.057	.038	.023	.018	.012	.008	
8.0	.159	.099	.058	.137	.086	.051	.095	.060	.036	.055	.036	.021	.018	.012	.007	
9.0	.153	.094	.055	.132	.082	.048	.091	.058	.034	.053	.034	.020	.017	.011	.007	
10.0	.147	.090	.052	.127	.078	.045	.088	.055	.032	.051	.033	.019	.017	.011	.006	

C Range: 0 - 360DEG
C Interval: 22.5DEG
Test Speed: HIGH
Temperature:25.3℃
Operators:Cloud
Test Date:2024-10-31

γ Range: 0 - 180DEG
γ Interval: 1.0DEG
Test System:EVERFINE GO-2000B_V1 SYSTEM V2.00.488
Humidity:65.0%
Test Distance:6.360m [K=1.0000]
Remarks:

UGR(Unified Glare Rating) Table

Test:U:24.00V I:0.4244A P:10.19W PF:1.000 Freq:0Hz Lamp Flux:666.906x1 lm										
NAME: SF06-24V-2835-120-2200-80					TYPE:			WEIGHT:		
SPEC.:					DIM.: Length=1m			SERIAL No.:		
MFR.:					SUR.:			Shielding Angle:		
ceiling/cavity	0.7	0.7	0.5	0.5	0.3	0.7	0.7	0.5	0.5	0.3
walls	0.5	0.3	0.5	0.3	0.3	0.5	0.3	0.5	0.3	0.3
working plane	0.2	0.2	0.2	0.2	0.2	0.2	0.2	0.2	0.2	0.2
Room dimensions	Viewed crosswise					Viewed endwise				
x = 2H y = 2H	22.6	24.0	22.9	24.3	24.6	22.5	24.0	22.9	24.3	24.6
3H	24.2	25.6	24.6	25.9	26.2	24.2	25.6	24.5	25.9	26.2
4H	25.0	26.3	25.4	26.6	26.9	24.9	26.2	25.3	26.5	26.9
6H	25.6	26.8	26.0	27.2	27.5	25.5	26.7	25.9	27.1	27.4
8H	25.9	27.1	26.3	27.4	27.8	25.7	26.9	26.1	27.3	27.6
12H	26.1	27.2	26.5	27.6	28.0	25.9	27.0	26.3	27.4	27.8
4H 2H	23.2	24.5	23.6	24.8	25.2	23.2	24.5	23.5	24.8	25.1
3H	25.1	26.2	25.5	26.6	27.0	25.0	26.2	25.4	26.5	26.9
4H	26.0	27.0	26.4	27.4	27.8	25.9	26.9	26.3	27.3	27.7
6H	26.7	27.7	27.2	28.1	28.5	26.6	27.6	27.1	28.0	28.4
8H	27.1	27.9	27.5	28.4	28.8	26.9	27.8	27.4	28.2	28.7
12H	27.3	28.1	27.8	28.6	29.1	27.1	27.9	27.6	28.4	28.9
8H 4H	26.3	27.1	26.7	27.6	28.0	26.2	27.1	26.7	27.5	28.0
6H	27.2	28.0	27.7	28.4	28.9	27.1	27.9	27.6	28.3	28.8
8H	27.7	28.3	28.2	28.8	29.4	27.5	28.2	28.1	28.7	29.2
12H	28.1	28.6	28.6	29.2	29.7	27.9	28.4	28.4	29.0	29.5
12H 4H	26.3	27.1	26.8	27.6	28.0	26.2	27.1	26.7	27.5	28.0
6H	27.3	28.0	27.8	28.5	29.0	27.2	27.9	27.7	28.4	28.9
8H	27.8	28.4	28.4	28.9	29.5	27.7	28.3	28.2	28.8	29.3
Variations with the observer position at spacings(CIE Pub.117):										
S = 1.0H	+ 0.1 / - 0.2					+ 0.1 / - 0.2				
1.5H	+ 0.2 / - 0.3					+ 0.2 / - 0.3				
2.0H	+ 0.1 / - 0.3					+ 0.1 / - 0.3				

CIE Pub.117, 666.9 lm Total Lamp Luminous Flux Correct (8log(F/F0) = -1.4)
Area: 0.017 m2

C Range: 0 - 360DEG
C Interval: 22.5DEG
Test Speed: HIGH
Temperature:25.3℃
Operators:Cloud
Test Date:2024-10-31

γ Range: 0 - 180DEG
γ Interval: 1.0DEG
Test System:EVERFINE GO-2000B_V1 SYSTEM V2.00.488
Humidity:65.0%
Test Distance:6.360m [K=1.0000]
Remarks:

UTILIZATION FACTORS TABLE

Test:U:24.00V I:0.4244A P:10.19W PF:1.000 Freq:0Hz Lamp Flux:666.906x1 lm		
NAME: SF06-24V-2835-120-2200-80	TYPE:	WEIGHT:
SPEC.:	DIM.: Length=1m	SERIAL No.:
MFR.:	SUR.:	Shielding Angle:

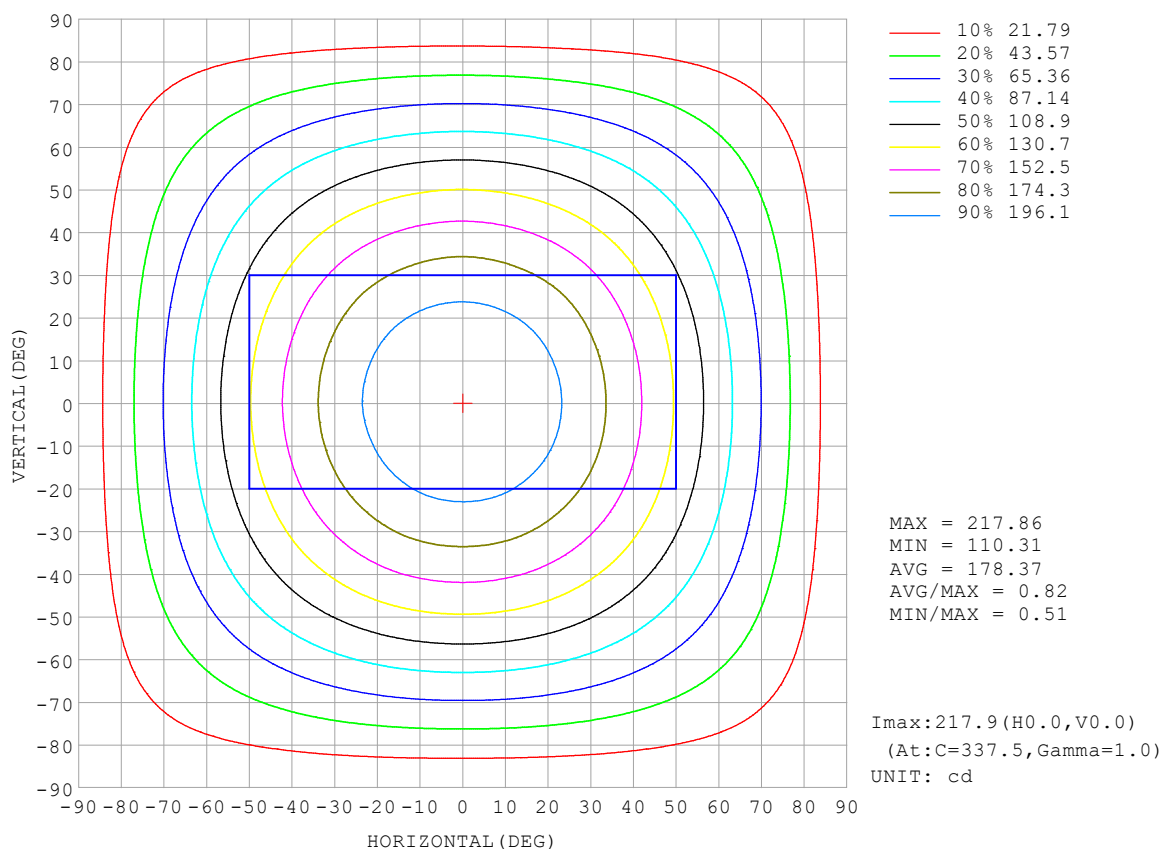
REFLECTANCE										
Ceiling	0.8	0.8	0.8	0.7	0.7	0.7	0.5	0.5	0.5	0
Walls	0.7	0.5	0.3	0.7	0.5	0.3	0.7	0.5	0.3	0
Working plane	0.2	0.2	0.2	0.2	0.2	0.2	0.2	0.2	0.2	0
ROOM INDEX	UTILIZATION FACTORS (PERCENT) $k(RI) \times RCR = 5$									
$k = 0.60$	56	44	37	55	44	37	53	43	36	30
0.80	65	54	46	64	53	46	62	52	45	38
1.00	74	62	55	72	62	54	70	63	54	46
1.25	81	70	62	79	69	62	76	67	61	53
1.50	86	75	68	84	74	67	80	72	66	58
2.00	93	84	77	91	82	76	87	80	74	65
2.50	97	88	82	94	87	81	90	84	79	69
3.00	100	93	87	98	91	86	93	88	83	73
4.00	104	98	93	102	96	92	97	92	88	78
5.00	107	102	97	104	99	95	99	95	92	81
ROOM INDEX	UF (total)									Direct
According to DIN EN 13032-2 2004			Suspended					SHRNOM = 1.25		

C Range: 0 - 360DEG
 C Interval: 22.5DEG
 Test Speed: HIGH
 Temperature: 25.3°C
 Operators: Cloud
 Test Date: 2024-10-31

γ Range: 0 - 180DEG
 γ Interval: 1.0DEG
 Test System: EVERFINE GO-2000B_V1 SYSTEM V2.00.488
 Humidity: 65.0%
 Test Distance: 6.360m [K=1.0000]
 Remarks:

ISOCANDELA DIAGRAM

Test:U:24.00V I:0.4244A P:10.19W PF:1.000 Freq:0Hz Lamp Flux:666.906x1 lm		
NAME: SF06-24V-2835-120-2200-80	TYPE:	WEIGHT:
SPEC.:	DIM.: Length=1m	SERIAL No.:
MFR.:	SUR.:	Shielding Angle:

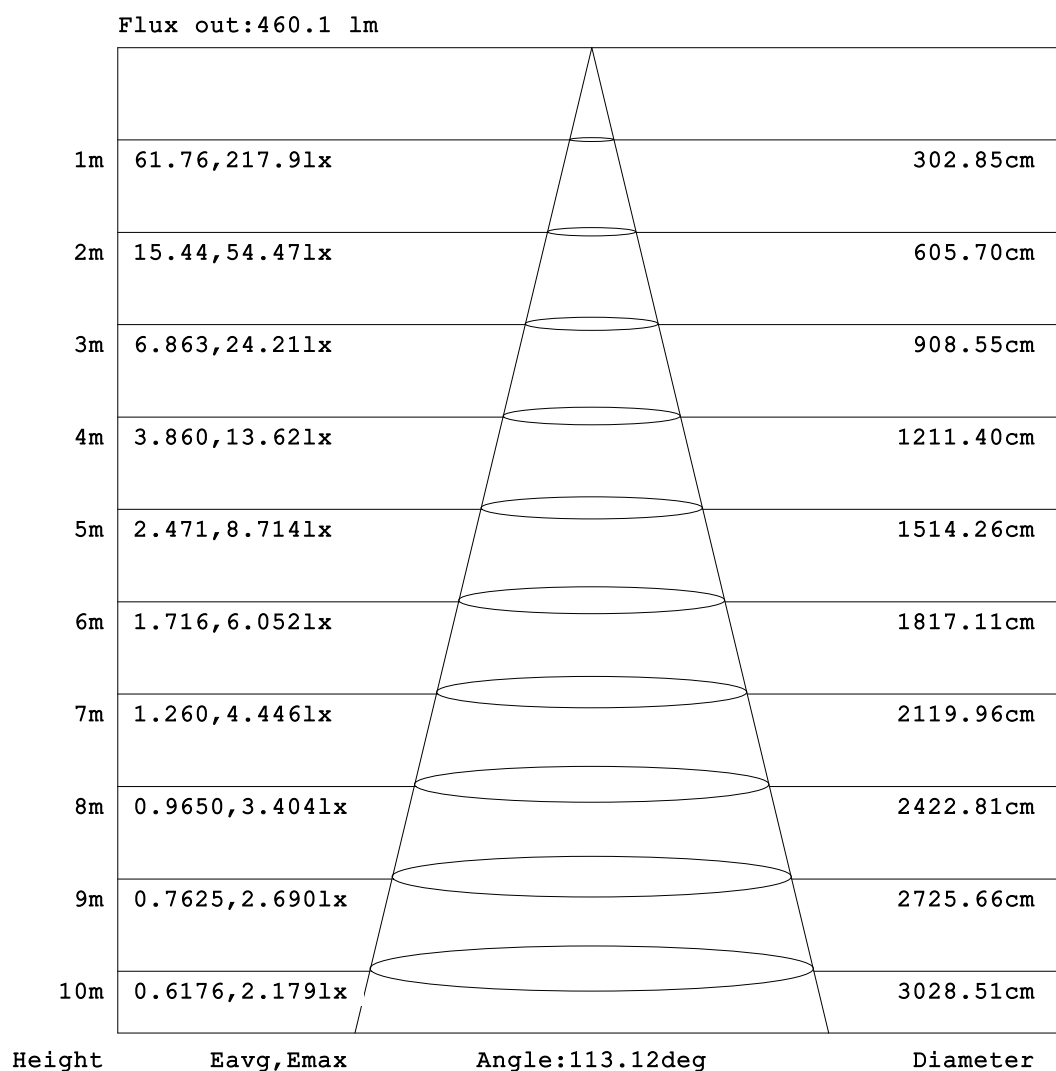


C Range: 0 - 360DEG
C Interval: 22.5DEG
Test Speed: HIGH
Temperature: 25.3°C
Operators: Cloud
Test Date: 2024-10-31

γ Range: 0 - 180DEG
γ Interval: 1.0DEG
Test System: EVERFINE GO-2000B_V1 SYSTEM V2.00.488
Humidity: 65.0%
Test Distance: 6.360m [K=1.0000]
Remarks:

AAI Figure

Test:U:24.00V I:0.4244A P:10.19W PF:1.000 Freq:0Hz Lamp Flux:666.906x1 lm		
NAME: SF06-24V-2835-120-2200-80	TYPE:	WEIGHT:
SPEC.:	DIM.: Length=1m	SERIAL No.:
MFR.:	SUR.:	Shielding Angle:



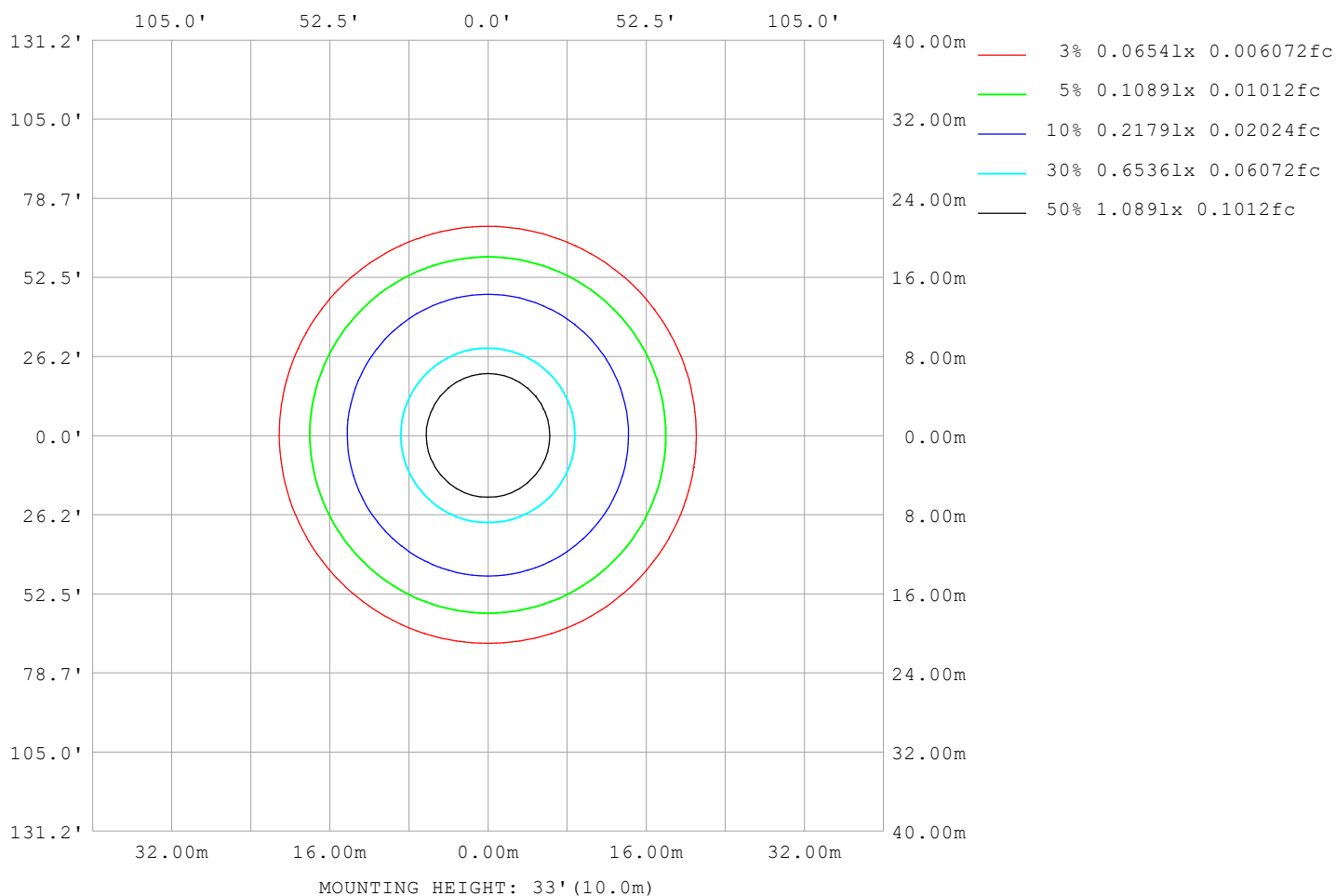
Note: The Curves indicate the illuminated area and the average illumination when the luminaire is at different distance.

C Range: 0 - 360DEG
C Interval: 22.5DEG
Test Speed: HIGH
Temperature: 25.3°C
Operators: Cloud
Test Date: 2024-10-31

γ Range: 0 - 180DEG
γ Interval: 1.0DEG
Test System: EVERFINE GO-2000B_V1 SYSTEM V2.00.488
Humidity: 65.0%
Test Distance: 6.360m [K=1.0000]
Remarks:

ISOLUX DIAGRAM

Test:U:24.00V I:0.4244A P:10.19W PF:1.000 Freq:0Hz Lamp Flux:666.906x1 lm		
NAME: SF06-24V-2835-120-2200-80	TYPE:	WEIGHT:
SPEC.:	DIM.: Length=1m	SERIAL No.:
MFR.:	SUR.:	Shielding Angle:



C Range: 0 - 360DEG
C Interval: 22.5DEG
Test Speed: HIGH
Temperature: 25.3°C
Operators: Cloud
Test Date: 2024-10-31

γ Range: 0 - 180DEG
γ Interval: 1.0DEG
Test System: EVERFINE GO-2000B_V1 SYSTEM V2.00.488
Humidity: 65.0%
Test Distance: 6.360m [K=1.0000]
Remarks:

LED Avg.L Report

Test:U:24.00V I:0.4244A P:10.19W PF:1.000 Freq:0Hz Lamp Flux:666.906x1 lm		
NAME: SF06-24V-2835-120-2200-80	TYPE:	WEIGHT:
SPEC.:	DIM.: Length=1m	SERIAL No.:
MFR.:	SUR.:	Shielding Angle:

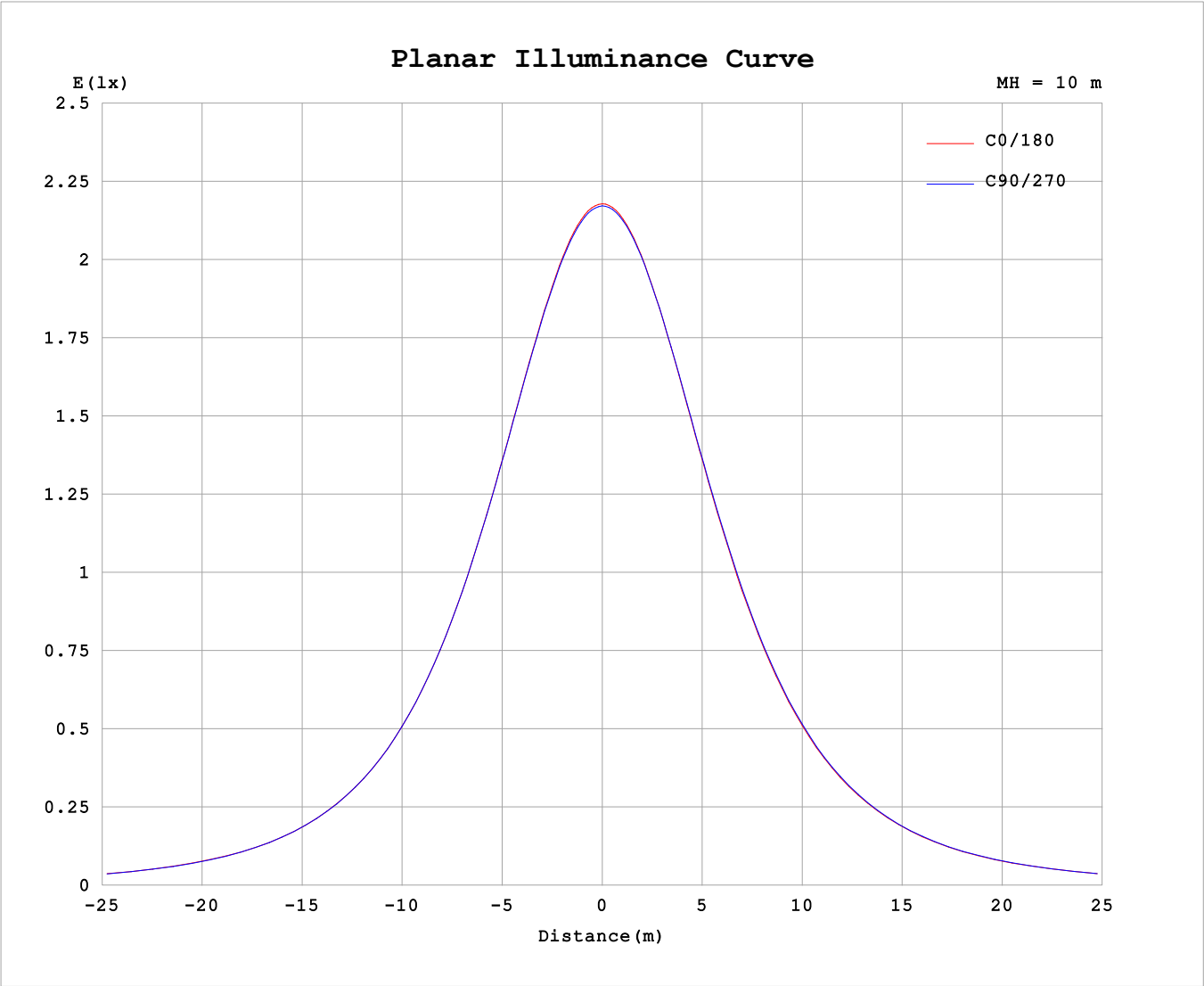
AvgL	cd/m2
L_0~180 (65) av	11355
L_0~180 (75) av	11227
L_0~180 (85) av	13081
L_90~270 (65) av	11377
L_90~270 (75) av	11047
L_90~270 (85) av	11281
L_45 (65) av	11380
L_45 (75) av	11167
L_45 (85) av	12097

Standard: GB/T 29293-2012

C Range: 0 - 360DEG
C Interval: 22.5DEG
Test Speed: HIGH
Temperature:25.3℃
Operators:Cloud
Test Date:2024-10-31

γ Range: 0 - 180DEG
γ Interval: 1.0DEG
Test System:EVERFINE GO-2000B_V1 SYSTEM V2.00.488
Humidity:65.0%
Test Distance:6.360m [K=1.0000]
Remarks:

Planar Illuminance Curve



C Range: 0 - 360DEG	γ Range: 0 - 180DEG
C Interval: 22.5DEG	γ Interval: 1.0DEG
Test Speed: HIGH	Test System:EVERFINE GO-2000B_V1 SYSTEM V2.00.488
Temperature:25.3℃	Humidity:65.0%
Operators:Cloud	Test Distance:6.360m [K=1.0000]
Test Date:2024-10-31	Remarks:

LUMINOUS DISTRIBUTION INTENSITY DATA

Test:U:24.00V I:0.4244A P:10.19W PF:1.000 Freq:0Hz Lamp Flux:666.906x1 lm																	
NAME: SF06-24V-2835-120-2200-80									TYPE:						WEIGHT:		
SPEC.:									DIM.: Length=1m						SERIAL No.:		
MFR.:									SUR.:						Shielding Angle:		

Table--1

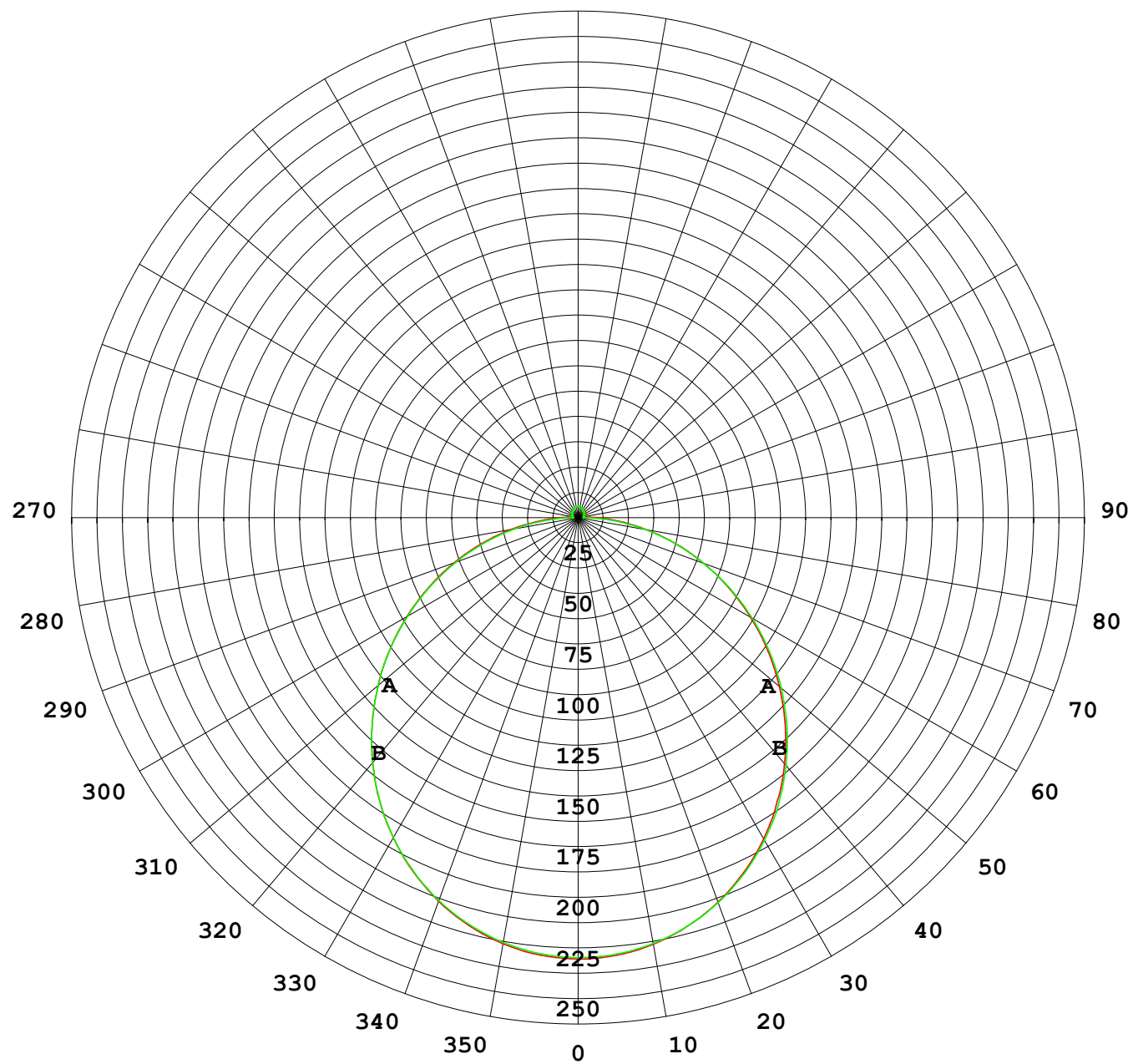
UNIT: cd

C (DEG) γ (DEG)	0	22.5	45	67.5	90	112.5	135	157.5	180	202.5	225	247.5	270	292.5	315	337.5			
0	217	217	217	217	217	217	217	217	217	217	217	217	217	217	217	217			
5	216	216	216	216	216	216	216	216	216	216	216	216	216	216	216	216			
10	213	213	213	213	213	213	213	213	213	213	214	214	214	214	214	213			
15	208	208	208	208	208	208	208	208	208	208	209	209	209	209	209	208			
20	201	201	201	201	201	201	201	201	201	202	202	202	202	202	202	202			
25	192	192	193	193	193	193	193	193	193	193	194	194	194	194	194	193			
30	182	182	182	183	183	183	182	183	183	183	184	184	184	184	184	183			
35	170	171	171	171	171	171	171	171	171	171	172	172	173	172	172	171			
40	157	158	158	158	158	158	158	158	158	159	159	160	160	159	159	158			
45	143	144	144	144	144	144	144	144	144	145	145	146	146	145	145	144			
50	129	129	129	129	129	129	129	129	129	130	131	131	131	131	130	129			
55	113	113	113	113	113	113	113	113	114	114	115	115	115	115	115	114			
60	97.3	97.4	97.2	97.4	97.3	97.4	97.3	97.5	98.1	98.4	99.0	99.2	99.3	99.0	98.8	98.2			
65	81.2	81.2	80.9	80.9	80.7	80.9	81.0	81.3	82.0	82.2	82.7	82.7	82.8	82.5	82.4	82.0			
70	65.0	64.9	64.5	64.4	64.1	64.4	64.6	65.1	65.8	66.0	66.3	66.1	66.1	65.9	66.0	65.7			
75	49.0	48.9	48.3	48.0	47.6	48.1	48.4	49.1	49.8	49.9	50.0	49.7	49.6	49.5	49.7	49.6			
80	33.2	33.1	32.4	32.0	31.6	32.1	32.6	33.3	34.1	34.1	34.1	33.6	33.4	33.4	33.7	33.7			
85	18.7	18.3	17.1	16.4	15.9	16.4	17.5	19.1	20.1	19.7	18.8	17.8	17.5	17.6	18.2	18.6			
90	8.97	8.40	6.74	4.48	2.55	4.57	7.04	8.94	9.70	9.24	7.81	5.27	2.76	4.67	6.97	8.45			
95	4.14	3.77	2.93	2.74	2.71	3.05	3.54	4.00	4.22	3.99	3.53	3.07	2.59	2.59	2.68	3.68			
100	3.06	3.04	2.96	2.92	2.93	3.17	3.53	3.89	3.72	3.73	3.53	3.09	2.71	2.58	2.53	2.81			
105	3.22	3.21	3.14	3.12	3.13	3.33	3.62	3.92	3.73	3.72	3.56	3.20	2.86	2.74	2.74	2.88			
110	3.41	3.40	3.32	3.33	3.33	3.50	3.76	4.00	3.76	3.75	3.65	3.32	3.05	3.01	3.07	2.97			
115	3.60	3.59	3.53	3.48	3.50	3.65	3.89	4.12	3.85	3.84	3.76	3.45	3.24	3.24	3.33	3.29			
120	3.78	3.77	3.63	3.66	3.68	3.75	4.03	4.24	3.94	3.93	3.87	3.52	3.43	3.42	3.49	3.47			
125	3.96	3.88	3.79	3.84	3.84	3.93	4.17	4.36	4.05	4.03	3.97	3.68	3.61	3.59	3.66	3.66			
130	4.13	4.11	3.95	4.00	4.01	4.11	4.28	4.47	4.15	4.14	4.08	3.85	3.80	3.78	3.82	3.87			
135	4.28	4.25	4.11	4.17	4.18	4.29	4.35	4.57	4.26	4.25	4.14	4.03	4.00	3.97	4.01	4.04			
140	4.36	4.30	4.29	4.34	4.35	4.47	4.46	4.64	4.37	4.35	4.26	4.22	4.20	4.16	4.19	4.20			
145	4.57	4.45	4.45	4.51	4.51	4.66	4.65	4.67	4.40	4.39	4.46	4.42	4.40	4.36	4.38	4.37			
150	4.75	4.62	4.61	4.68	4.76	4.84	4.83	4.84	4.55	4.58	4.66	4.63	4.62	4.57	4.58	4.55			
155	4.91	4.78	4.78	4.93	4.95	5.02	5.00	5.02	4.74	4.78	4.85	4.83	4.82	4.77	4.78	4.74			
160	5.07	4.95	5.06	5.11	5.12	5.19	5.17	5.18	4.95	4.97	5.04	5.02	5.02	4.97	4.97	4.93			
165	5.22	5.11	5.21	5.27	5.29	5.33	5.31	5.32	5.09	5.14	5.21	5.21	5.22	5.16	5.16	5.11			
170	5.21	5.25	5.34	5.40	5.41	5.45	5.41	5.41	5.17	5.29	5.35	5.35	5.38	5.33	5.32	5.27			
175	5.29	5.44	5.43	5.50	5.50	5.53	5.49	5.49	5.29	5.40	5.46	5.47	5.50	5.45	5.44	5.39			
180	5.34	5.47	5.49	5.54	5.55	5.55	5.52	5.50	5.34	5.46	5.50	5.53	5.55	5.54	5.52	5.49			

C Range: 0 - 360DEG
C Interval: 22.5DEG
Test Speed: HIGH
Temperature:25.3℃
Operators:Cloud
Test Date:2024-10-31

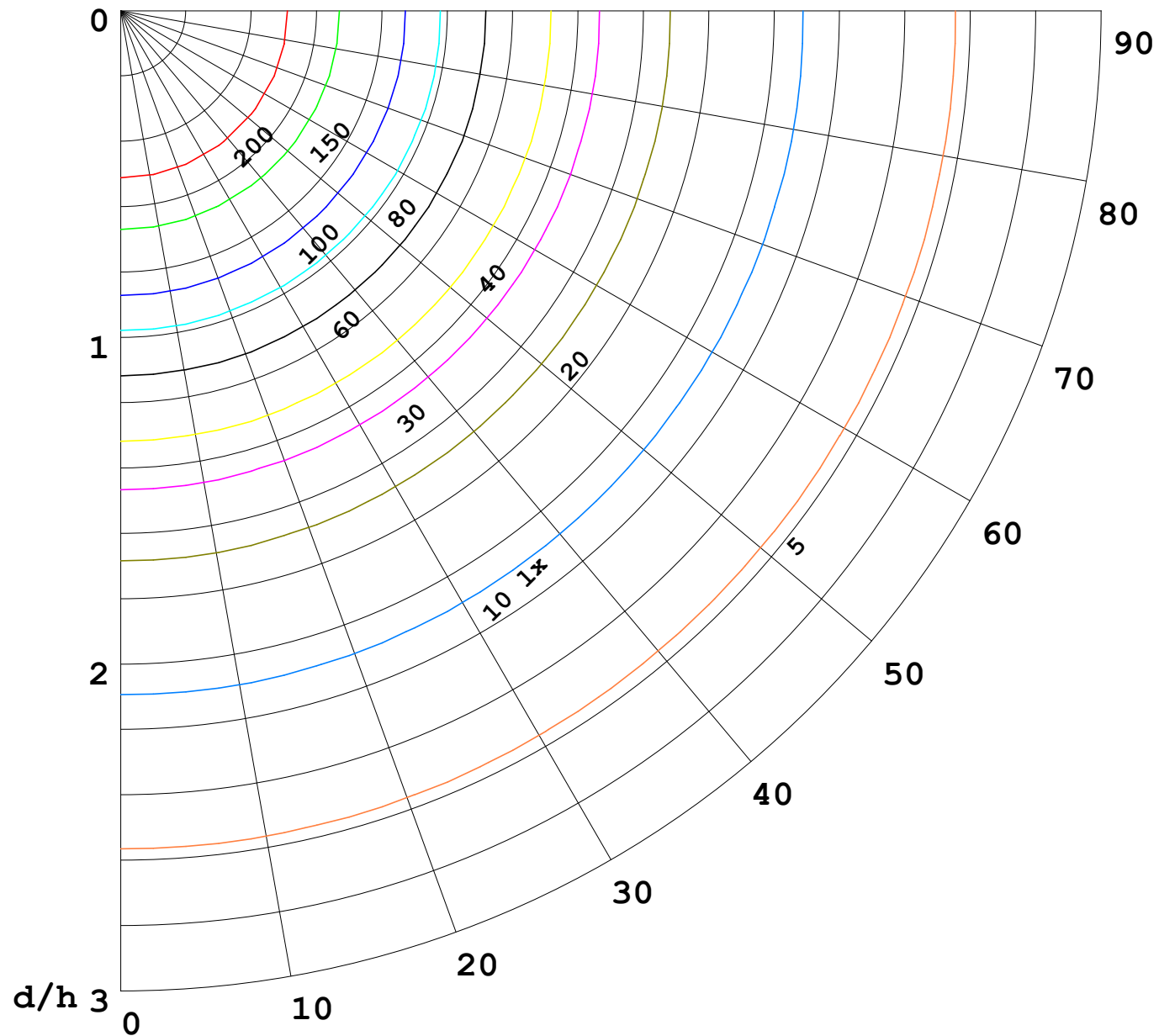
γ Range: 0 - 180DEG
γ Interval: 1.0DEG
Test System:EVERFINE GO-2000B_V1 SYSTEM V2.00.488
Humidity:65.0%
Test Distance:6.360m [K=1.0000]
Remarks:

I (cd)



1000 lm

$\kappa = 1$



F = 1000 lm
 K = 0.7
 Hcc = 0.8 m
 Hfc = 0.0 m
 Eave = 100 lx

	Pcc	Pw	Pfc
————	70	50	30
————	50	30	20

