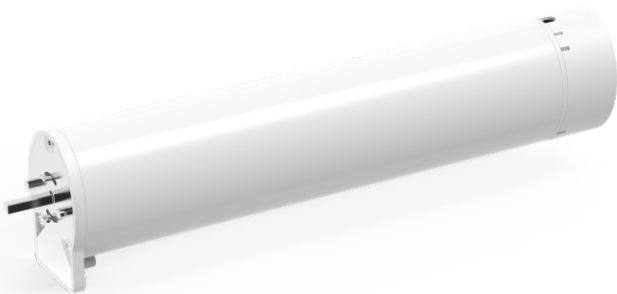


Ultra-silent Smart Curtain Motor

- Ultra-silent & high-precision DC motor. Soft start and soft stop function makes it run more smoothly.
- Motor will stop running automatically if it meets resistance, protecting the system.
- Manually pull the curtain to open or close it when the power is off.
- When the power is on, gently pull the curtain 5 cm towards a direction so as to start the automated opening and closing.
- Use Bluetooth 5.0 SIG Mesh technology that provides stable communication and reliable performance with its high networking capacity.
- Control it on your iOS or Android device via Bluetooth.
- Support local scenes that can run without the Internet or a gateway. It is faster and more stable.
- Work with a gateway to achieve the advanced functions, such as remote control, cloud scenes and automation.



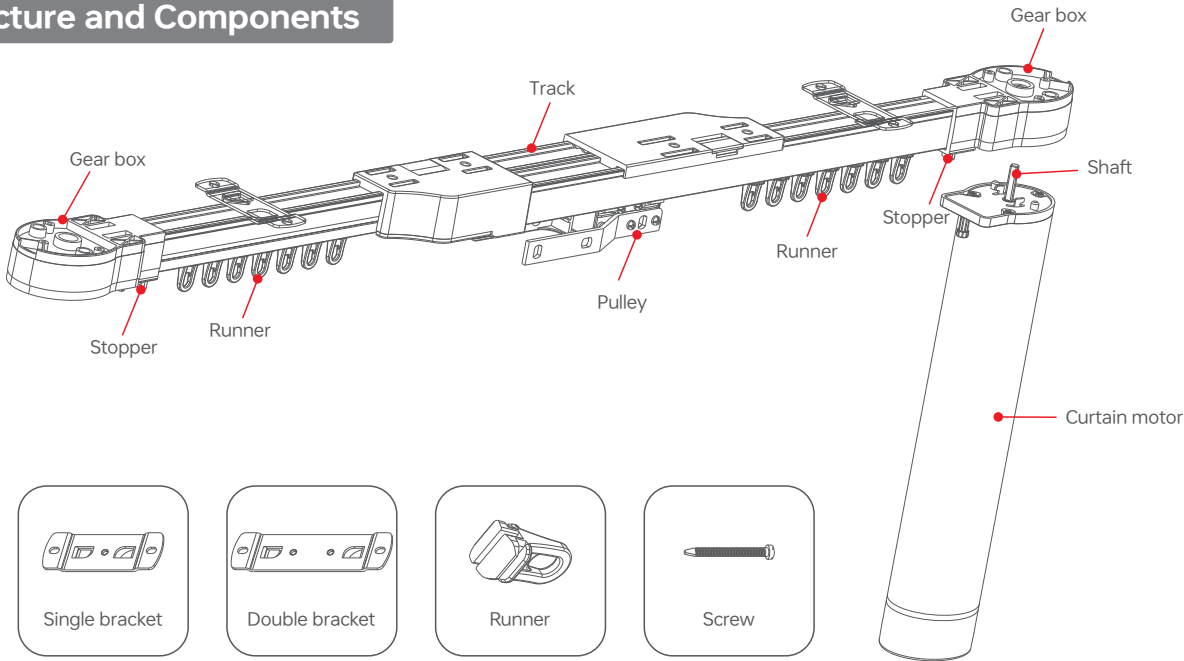
Parameters

Product Model	Rated Torque	Running Speed	Motor Housing Dimensions	Rated Voltage	Rated Power	IP Rating
CG-CUR15	1.2Nm	14cm/s	310×67×52mm	100-240V~, 50/60Hz	65W	IP20

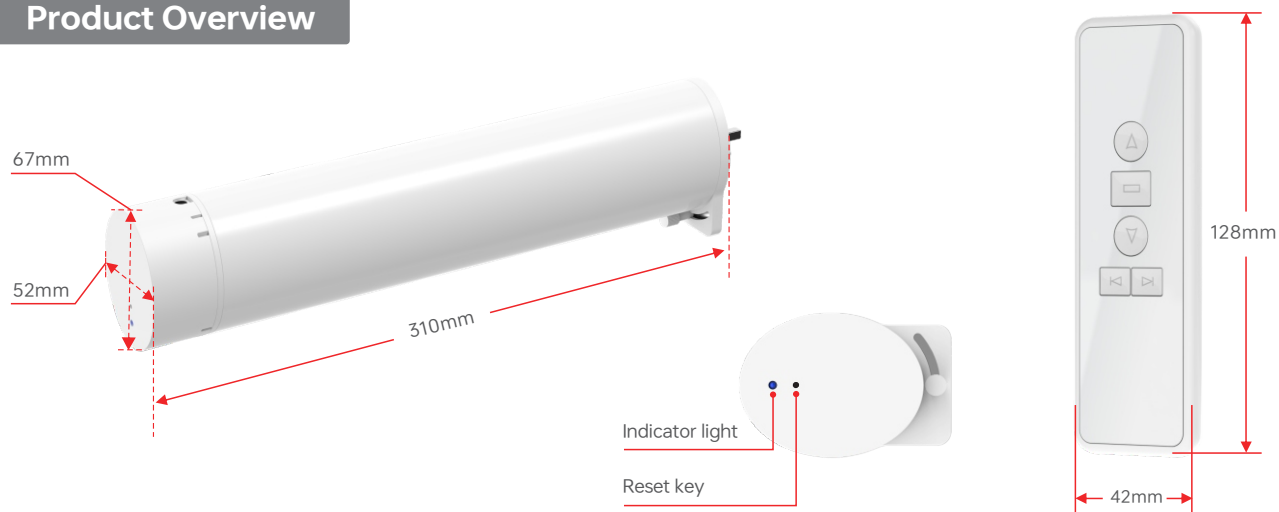
Attached list: Track load parameters

Curtain weight	Type of curtain track	Track length		Track length		Track length		Track length	
		Two-way draw	One-way draw	Two-way draw	One-way draw	Two-way draw	One-way draw	Two-way draw	One-way draw
4m		60kg	50kg	45kg	40kg	35kg	30kg	31kg	21kg
8m		55kg	45kg	40kg	35kg	30kg	25kg	21kg	16kg
12m		50kg	40kg	35kg	30kg	25kg	20kg		

Structure and Components



Product Overview

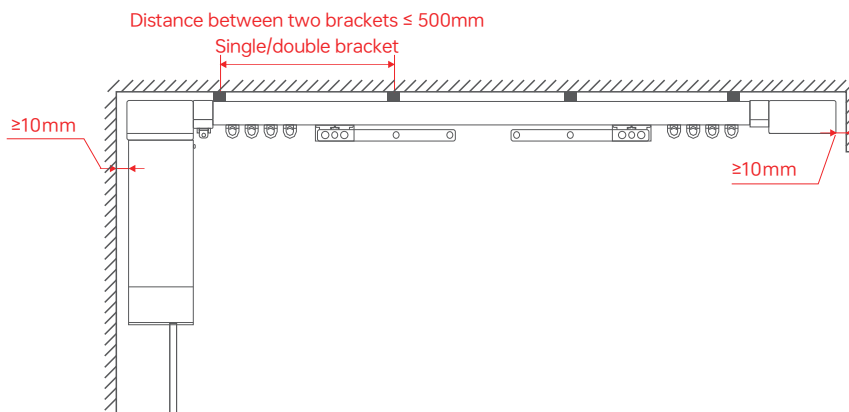


* Reset key: Insert an ejection pin into the reset key and long press it for 6s until the blue indicator light flashes, meaning it's ready for network connection.
The curtain motor comes with a national standard three-pin plug, and the power cord has a default length of 1.2 meters. If you need to extend the power cord, please prepare an extension cord by yourself.

* The remote and the curtain motor are sold separately.

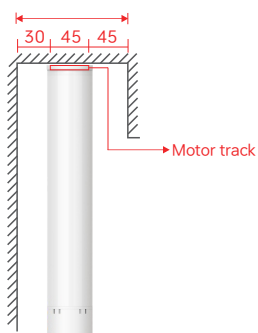
Installation Distance

Front view



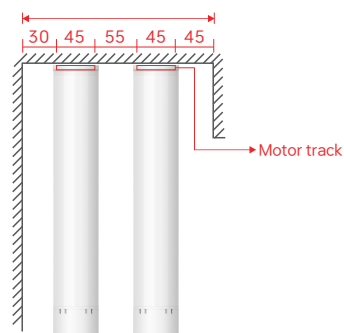
Side view

Curtain box width at least should be 120 mm



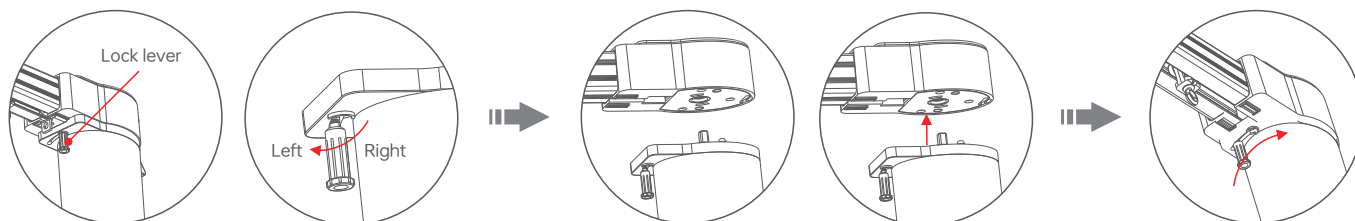
Single track

Curtain box width at least should be 220 mm



Double tracks (for two layers of curtains)

Install the Curtain Motor

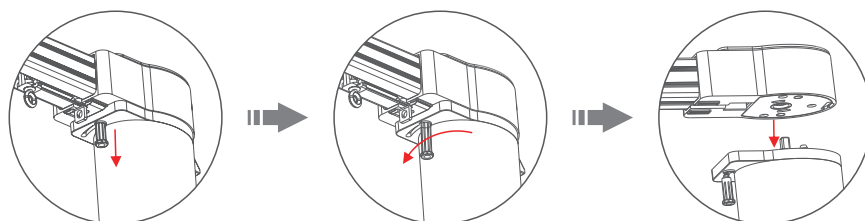


1. Keep the lock lever on the left. If it is in the right position, please pull down the lock lever and push it to the left.

2. Attach the curtain motor to the gear box.

3. Push the lock lever to the right to lock the attachment.

Remove the Curtain Motor

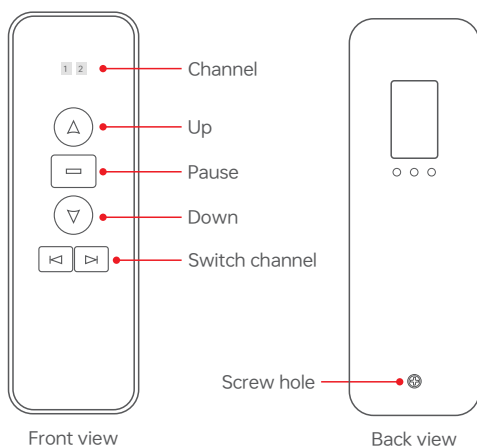


1. Pull down the lock lever and push it to the left to unlock the curtain motor. 2. Detach the motor from the gear box.

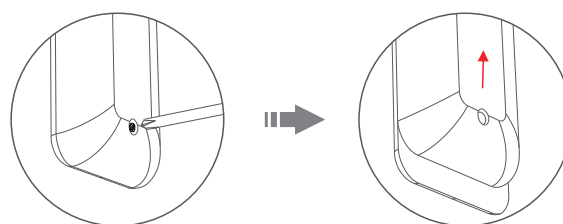
! Note:

- Install the curtain motor as shown.
- Ensure the lock lever is in the correct position as illustrated.
- The ceiling must be strong enough to support the track, motor and curtains.

Description of RF Remote Buttons



RF Remote Battery Replacement



1. Loosen the screw on the back of the remote with a screwdriver.

2. Push the rear cover in the direction of the arrow at the bottom of the remote and remove the cover.

RF Remote Instructions

Press “◀” or “▶” button to switch to the channel you wish. You can open or close the curtains by a short press on the “△” or “▽” button. If you want to simultaneously control two curtain motors by the same remote, first press “◀” or “▶” button to switch to the channel. When the indicator lights of Channel 1 and 2 light up at the same time, meaning you can open/close the curtains, or pause the progress.

App Operating Instructions

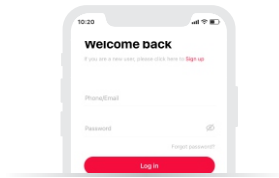
1. Register your L-Home account

1.1 Scan the QR code below with you mobile phone and follow the prompts to complete the app installation.



Scan and download the App

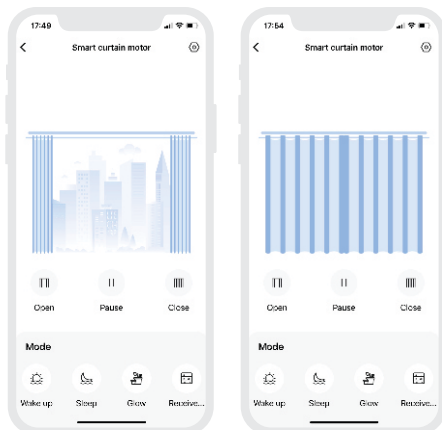
1.2 Open the App and log in or register your L-Home account.



3. Set limit position

Method 1: After adding the curtain motor, go to the curtain motor interface and click 【Open】. When the curtains have been fully opened, click 【Close】. And when the curtains have been fully closed, the limit position setting is completed (Fully opening and closing the curtains are in no particular order. Just fully open and close them once according to the state of the curtains).

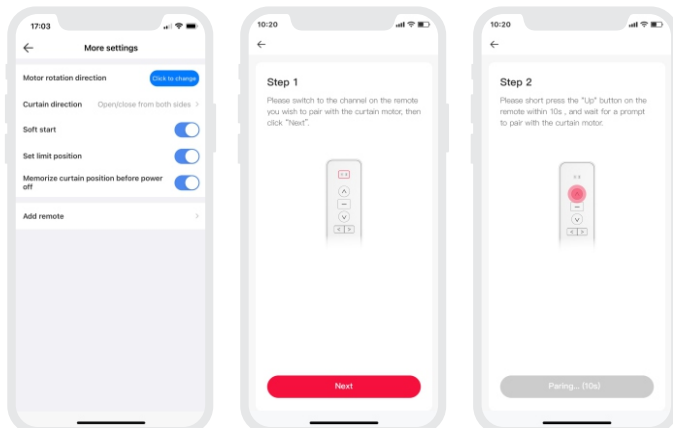
Method 2: After the installation of the curtain motor and the curtain track is completed, gently pull the curtain clothes or the pulley to about 5cm in one direction to enable the curtains to fully open and fully close once, then the limit position is completed.



5. Pair with the curtain remote

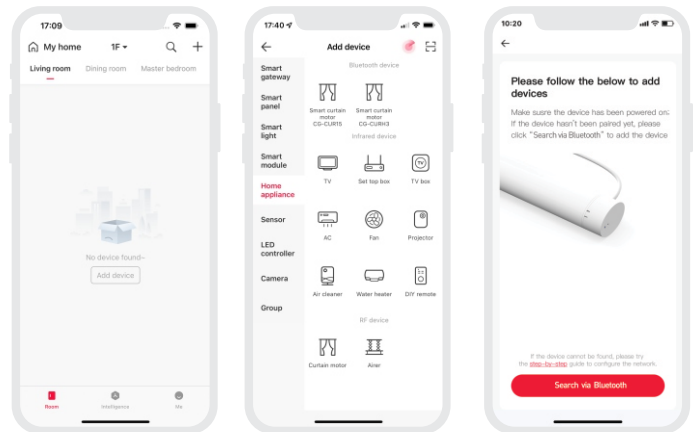
Go to 【Settings】 - 【More Settings】. Click 【Add Remote】 and follow the on-screen instructions to switch to the channel on the remote you wish to pair with the curtain motor, then click 【Next】. Within 10s, short press the "Up" Button on the remote, and wait for a prompt to pair with the curtain motor.

Note: One curtain motor can be paired with maximum 10 channels (see the Description of Remote Buttons on Page 3). When the eleventh channel is paired, the tenth paired channel will be automatically removed.



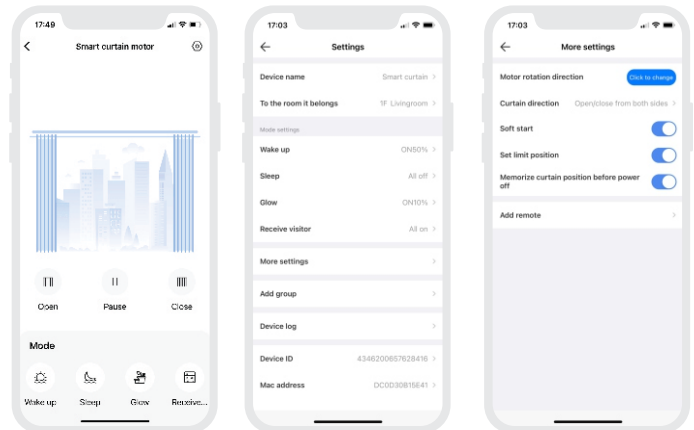
2. Pairing instructions

Create a home if you are a new user. Click "+" icon in the upper right corner to access the device list. Click 【Home Appliance】 and pick 【Curtain Motor (CG-CUR15)】. Follow the prompts to power on the curtain motor first, then click 【Search via Bluetooth】. When the curtain motor is found, click 【+】 icon to add it.



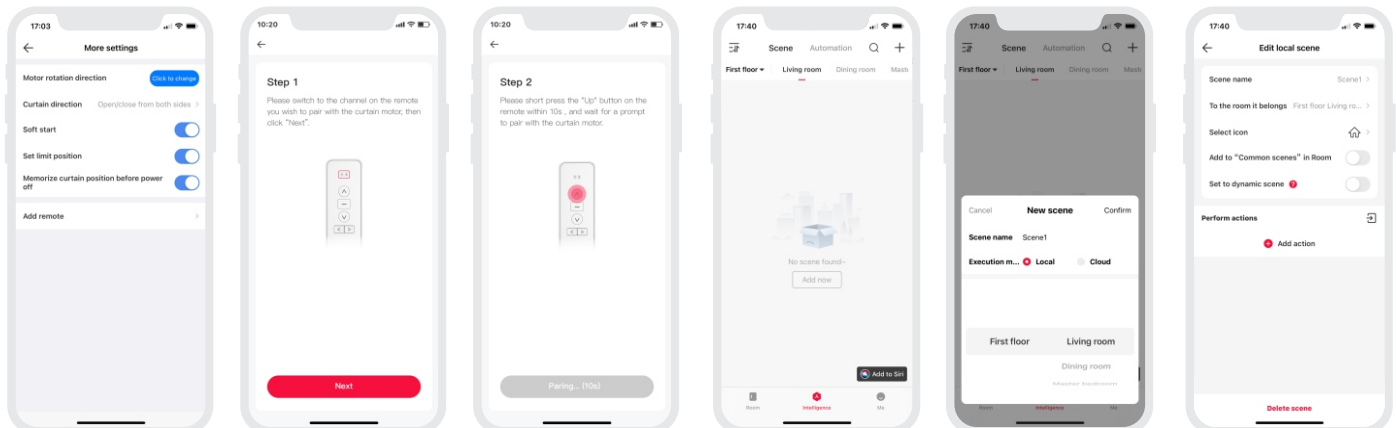
4. Control interface settings

After adding the curtain motor successfully, go to 【Room】 interface and click the curtain motor icon to access the control interface. You can tap OPEN to open the curtain or CLOSE to close it, or tap PAUSE to pause the opening and closing progress, or control the curtain by drawing the icon curtains from left to right or vice versa. The app provides four modes and you're able to click 【Settings】 - 【Mode Settings】 to customize effects of these four modes. By clicking 【Settings】 - 【More Settings】 - set the direction of motor rotation direction, curtain direction, soft start, set limit position, memorizing curtain position before power off and other functions.



6. Local scene

Switch to "Intelligence" interface and click 【+】 icon in the upper right corner to add a local scene. After you set up the action performed in this scene, the local linkage with the Bluetooth device can be achieved.



7. Cloud scene and automation

Please be sure a smart gateway device is added to your home, such as Super Panel 12S.

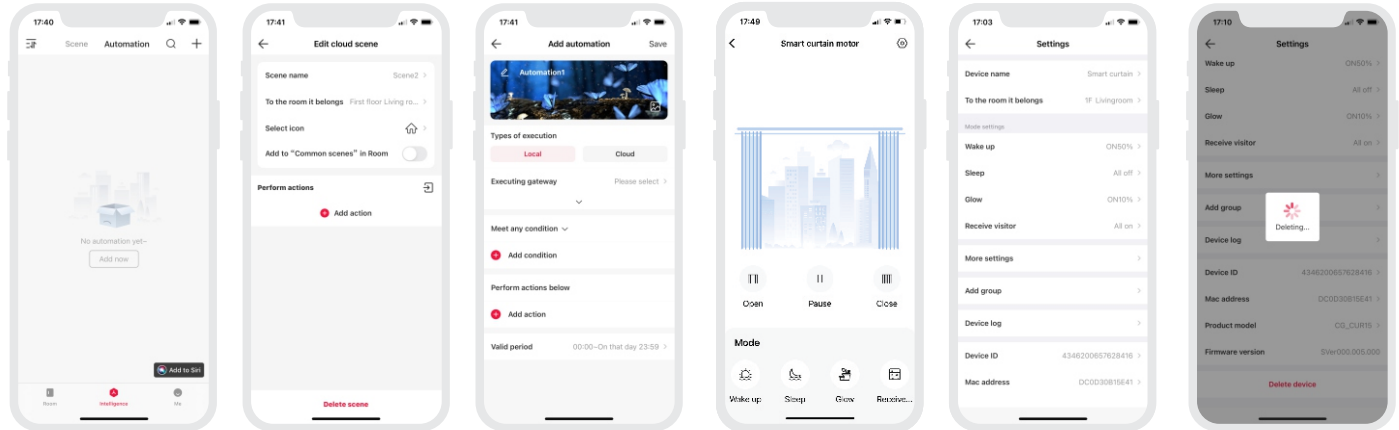
Cloud scene:

Switch to "Intelligence" interface and click **+** icon in the upper right corner to add a cloud scene. After you set up the action performed in this cloud scene, the remote linkage can be achieved.

Automation:

Tap **Automation** in "Intelligence" interface and click **+** icon in the upper right corner to add automation, then set the trigger conditions and executing action.

When the conditions you set are met, a series of device actions will be automatically triggered to performed and remote linkage is achieved as well.

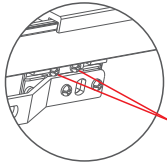
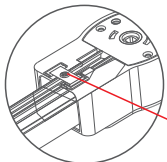


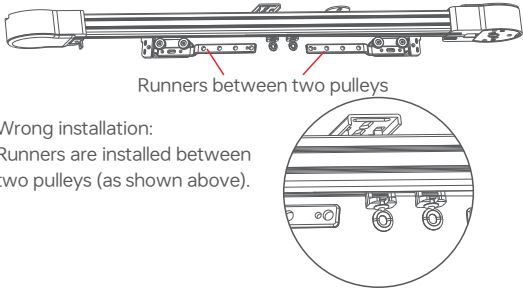
8. Remove the connected curtain motor from the network

Method 1: Go to the "Room" interface and click the curtain motor icon to access the control interface, then click **⊗** icon in the upper right corner to access **Settings**. Next, click **Delete**. When the prompt **Deleted Successfully** appears on the screen, it means the connected curtain motor has been removed from the Internet.

Method 2: Insert an ejection pin into the reset key and long press it for 6s until the blue indicator light flashes, meaning the connected curtain motor has been removed from the Internet.

Curtain Motor Troubleshooting

Symptom	Possible Cause	Remedy
Curtain motor is running but the curtain doesn't move.	Check whether the curtain track is installed correctly.	Check and adjust the gap between the track gear and the belt.
Curtain cannot be pulled.	1. Power is off suddenly when the motor is running. 2. Curtain is pulled in the wrong position that makes the pulley get stuck in one position.	1. Pull the curtain in the opposite direction, then pull it back. 2. Pull the curtain in the middle position.
Curtain moves automatically.	Curtain motor is mispaired with the other remote.	After you have installed the curtain motor and the curtain track and powered them on, go to the settings of the curtain motor in the APP to delete the motor (do not force delete or remove it from the network), then add the motor/ connect it to the network again.
The curtain motor and curtain track run normally when you do the commissioning on the floor, table or in other positions. But they run abnormally or make a high level of noise once installed on the ceiling.	The installation position is shifted that make the limit position of the curtain track change.	
In the installation process, the motor shaft has been manually rotated that changes the limit position of the curtain track.	The change in the the limit position is caused by operational mistakes.	
The curtains open or close asymmetrically.	1. Forget to draw the two pulleys to the left and right side respectively when installing the curtain track. 2. The motor removal makes the limit position of the curtain track change.	When the curtain motor is powered on, go to the settings of the curtain motor in the APP to delete the motor (do not force delete or remove it from the network). Next power off the motor and draw the two pulleys to the left and right side respectively, then add the motor/connect it to the network again.  Loosen the screw
A high level of noise is generated from the telescopic curtain track.	/	Please first loosen the screws at the bottom of both gear boxes, then pull the screws to 2-3mm and tighten them back.  Loosen the screw

Symptom	Possible Cause	Remedy
Runners are mistakenly installed between two pulleys.	 <p>Runners between two pulleys</p> <p>Wrong installation: Runners are installed between two pulleys (as shown above).</p>	The number of runners that come with the curtain track is more than needed. Please install them on the both sides of the pulley (refer to the curtain track manual for detailed instructions). If it does not affect the normal use, please ignore; If it does, please contact a professional personnel to remove it.
Please do not remove the curtain motor (detach the motor from the curtain track) unless it is necessary. If you do, the limit position of the curtain track may be changed.	The motor removal makes the limit position of the curtain track change.	When the curtain motor is powered on, go to the settings of the curtain motor in the APP to delete the motor (do not force delete or remove it from the network), then add the motor/connect it to the network again. The remote and scenes that you previously link with the motor will be cleared once the motor is deleted. Please be careful.

FQAs

Q1: How to view the channels on the remote?

A1: Please refer to the description of RF remote buttons on Page 3. The indicator lights marked "1" and "2" represent the two channels.

Q2: How many remotes can be connected to control one curtain motor?

A2: The quantity of curtain motors that can be controlled relies on the number of channels on the remotes: one motor can be controlled by maximum 10 channels, so the data of the eleventh channel will cover that of the tenth channel. For example, if there is only one channel on each remote controlling the motor, then the motor can be controlled by 10 remotes.

Q3: How many curtain motors can be controlled by one remote?

A3: The quantity of curtain motors that can be controlled relies on the number of channels on the remotes: one channel on the remote controls one motor, two channels control two motors, or both channels can control the same motor.

Q4: How many sets are needed to control two layered curtains (silk+ fabric curtain)?

A4: Two sets are needed (two curtain motors +two curtain tracks).

Q5: After the motor has been installed and connected to the network, why I cannot fully open or fully close the curtains with the APP?

A5: It may caused by the operational mistakes that lead to the incorrect setting of the limit position of the curtain track. To solve this, go to the settings of the curtain motor in the APP to delete the motor (do not force delete or remove it from the network), then add the motor / connect it to the network again. Next, go to the control interface of the motor, then tap OPEN to fully open the curtain and CLOSE to fully close it respectively. After that, you're able to fully open or fully close the curtains with the APP.

Attentions

- Products shall be installed by qualified professionals.
- LTECH products are non-waterproof (special models excepted).Please avoid the sun and rain. When installed outdoors, please ensure it is mounted in a water proof enclosure.
- Good heat dissipation will extend the working life of products. Please ensure good ventilation.
- Please check if the working voltage used complies with the parameter requirements of products.
- If a fault occurs, please do not attempt to fix products by yourself. If you have any question, please contact your suppliers.

✱ This manual is subject to changes without further notice. Product functions depend on the goods. Please feel free to contact our official distributors if you have any question.

Warranty Agreement

Warranty periods from the date of delivery : 2 years.

Free repair or replacement services for quality problems are provided within warranty periods.

Warranty exclusions below:

- Beyond warranty periods.
- Any artificial damage caused by high voltage, overload, or improper operations.
- Products with severe physical damage.
- Damage caused by natural disasters and force majeure.
- Warranty labels and barcodes have been damaged.
- No any contract signed by LTECH.

1. Repair or replacement provided is the only remedy for customers. LTECH is not liable for any incidental or consequential damage unless it is within the law.

2. LTECH has the right to amend or adjust the terms of this warranty, and release in written form shall prevail.